

Boggs Survey, Nov. 6, 1853  
 William E. Harris / ch. cr.  
 D. J. Wolf

Line A, on south side of 10 acre lot  
 leg. at stake, set by Buchanan running to  
 < stone  $98\frac{7}{8}^{\circ}E$   $1-1-2\frac{1}{2} = 22.98$

Line B, set east  $8' 10'' N 3\frac{3}{8}^{\circ}E$   
 came into east  $13' 8'' - 8' - 10'' = 4' 10'' = 2$  lbs  
 Var.  $\frac{1}{2}^{\circ}$  too much east OK. course  $N 3\frac{3}{8}^{\circ}E$ .

dist. 54.20

Line C, ran from N.W.  $\angle$  10 acre lot  
 at stone set for  $\angle$  to 40 acre tract  $33\frac{1}{2}^{\circ}W$   
 came out  $4' 6''$  too far east var.  $\frac{1}{2}^{\circ}$  OK.  $S 83\frac{1}{2}^{\circ}W$   
 $2-8-5 = 56.30$

2d piece Boggs survey 67a.

Line A starts at stake at forks of road  
on Quincy pike N 8 W. Set West 15'  
came out 10 west total was 25' west. 5-0-30<sup>101.50</sup>

N 85 W to N:O. 20" in 25 link dist.

Line B down center of Old RR.

N 32 1/2 E 2-0-22 = 40.25

Line C down the RR running by the RR.

N 62 E 1-2-28 1/2 = 23.54 to stake

set on race bank. Thence measuring  
offsets every 2' S 51 E

1-0-13 1/2 = 20.97

Stakes set every 4 rods.

N 1. 25'

" 2. = 78

" 3 = 92

" 4 = 0

" 5 = 0

Line D, N 89 1/2 E along race bank to center  
of bridge 1-9-0 = 38.00

Line E -

Thence S 24 1/4 E 2-0-9-28 = 19.12

Line E, N 2 E, for disc. S 21 1/2 E  
from center of North abut. of bridge  
to < to Hatchers mill yard.

1-0-37 = 21.48

diff. between two points at Hatchers

< 4 1/2 links

Line F on north side Hatchers

S 82 1/4 W 7-44 1/2 = 29.78

should be S 82 1/4 W 15.48 feet

Line 2. Start at or end line 1 at  
 NW 1/4 mill lot, S 5 E 8.83 chains  
 = 33.32 <sup>rods</sup> with board fence on west side  
 of mill lot. to post at offset in fence

Line 3. Start at S end line 2  
 at 83 1/2 E 42 ch = 168 rods to line  
 of fence on west side of alley running  
 south.

Line 4. Start at S end line 1  
 thence with fence on west side of  
 alley, set post 15 links  
 S 1/2 W 10.61 ch = 42.44 rods to  
 center of Lt Paris and Dr Gaff fike  
 at S W 1/4 Abram Detrick 1 1/2 a lot.

Line 7. Start east fike S end line 2  
 thence with fike  
 S 63 1/2 W 17.51 chains = 70.04 poles  
 to end at wagon gate Harris Farm.

Line 9. Start - West line 4.  
 with fike S 61 1/2 W 4.57 chains = 18.04 poles  
 to stake on north side fike and at west  
 side fike mill road same being place  
 of 1/2 of this survey

Course of R R on land line is  
 N 63 1/2 E. It is on my land

Hatchers Survey Nov. 7, 1883.

Set 9 lks, N. 42° E. from Blk. Walnut

Stump.

George Leveck } Chain survey  
L. H. Thiercott }

Using only 10 pins. One out equal 18 rods

A. 82° W. 7 rods 2 chs 2nd 4 lks. = 129.16 rods

Made < 3 feet west of the stake

Line B. Set North 4 feet 1/2 in. Peg S. 81° W.

Set North 4 feet 4 in. 5 rods 6 chs 6 links =

to 102.2 rods. O. K. sec. S. 82° W.

Wit. Birch 18 in. A. 29° W. Dist. 18 lks.

Also Birch 12 in. A. 88° E. Dist. 23 lks.

Set stone to Dick.

Line C. S. 8 1/2° E. (Came out 11 lks. Wit.)

3 rods 3 chs 25 lks = 61.00 rods. Double chs

in a pond. O. K. sec. S. 8 1/2° E.

Line D. Iron double chs to mark on  
root of bur oak, A. 82° E.

Wit. ash 6 in. A. 48 1/2° E. 25 lks 1 out  
Sch 4 1/2 lks. = 35.70 rods.

Line E. Set east 10 feet 3 in. S. 8 1/4° E.

Came out 7 feet 1/2 in. east. 3 rods 7 chs 22 lks

= 68.88 rods. Wit. double cherry 14 links

dist. S. 62 1/4° E. 1 line stone 2 in x 4 in x 16 in

Line F. A. 82° E. Set North 12 feet 8 in.

Set North 12 feet 5 in. Came out 19 feet

1/2 in. north of 1 stone.

3 rods 6 chs. 6 1/2 lks. = 66.26 rods.

O. K. sec. A. 81 1/2° E. , 3 chs = 67.25

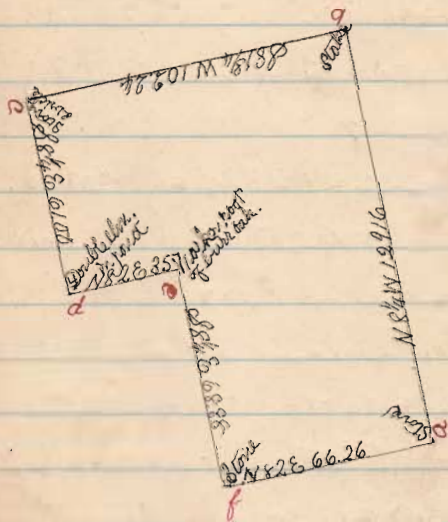
Explanations.

- A. Black walnut stump and stone.  
 B. Set stake.  
 C. Set stone & brick.  
 D. Double elm in pond.  
 E. Mark on root of burr oak.  
 F. Stone 2x4x16 inches.

- A. wit. black walnut stump 9 lks from  
 < N. 42 E      B. or witness given.  
 C. wit. beech 18 in N. 20 W. 18 lks. All about  
 12 in N. 88 2/3 E 23 lks.  
 D. wit. none.  
 E. wit. ash 6 in N. 48 2/3 E. 25 lks.  
 F. wit. double cherry 44 lks S. 62 1/4 E from  
 < line stone

No. of acres = 62.25.

Hatcher Survey. November 7, 1883.



James C. Wonders, Dep. Sur.