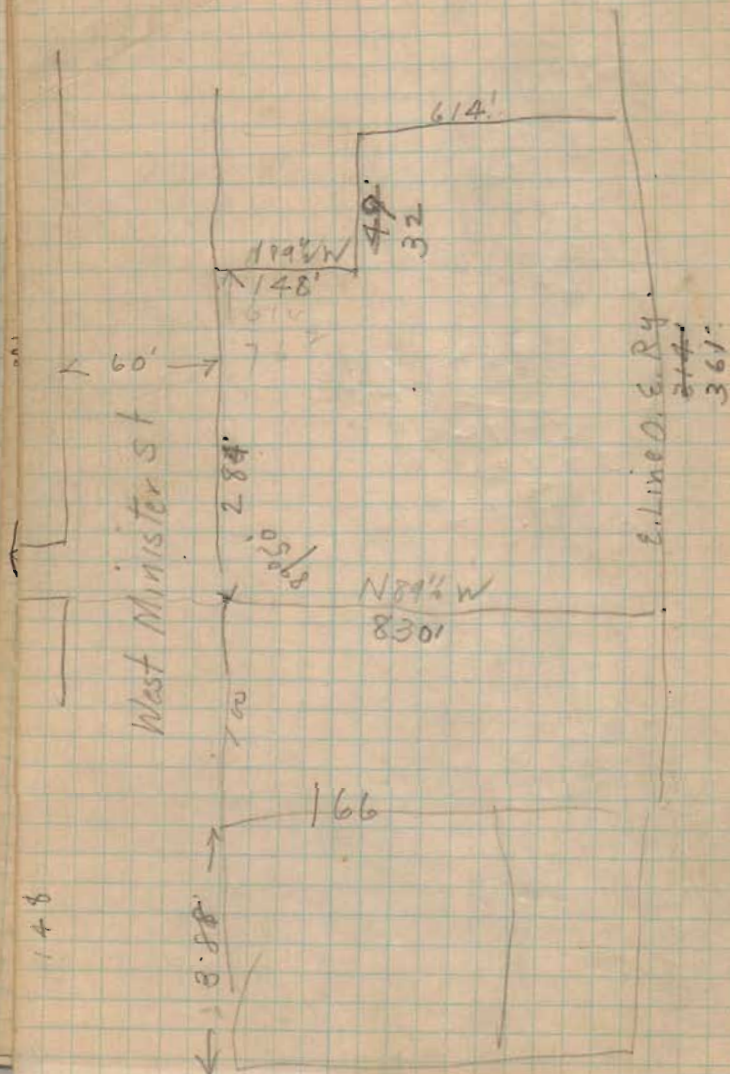


6/2/17

$$\begin{array}{r} 682 \\ 148 \\ \hline 830 \end{array}$$


West Line S 25 1/2 E - 400.2'  
 North " N 38 1/4 E L 116° 14'  
 West  
 near Jim 925 ft  
 off belt 150 - 90°  
 " 554 105° 35'  
 " 554 105° 12'

L S.W. cor 100° 13'

Swale line S. 56 E

Last L 107° 52' - 238.3 ft

~~5038~~ 238.3 ft

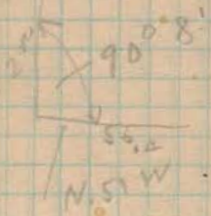


32°  
37'

100° 13'

216° 20' - 565.2'

1st Dist 50' N 75 1/2 E  
 2nd " v 24' 110° 10'  
 3rd " v 230' v N 41° E L  
 4th " 255' v N 43 1/2 E v  
 5th " 113 270° 13' S 43 1/2 E L, Point  
 6th " 70' v N 43 1/2 E Front line of line  
 7th " 240' 129° 56' N 24 W  
 8th " 150 100° 04' N 25 1/2 E v  
 9th " 170 N 36 E v  
 10th " 90 171° 57' N 27 1/2 E  
 11th " 85 N 19 E v  
 12th " 200 N 55 1/2 E  
 13th " 2556.4 N 51 W  
 190 v



320  
 409  
 250  
 53  
 3