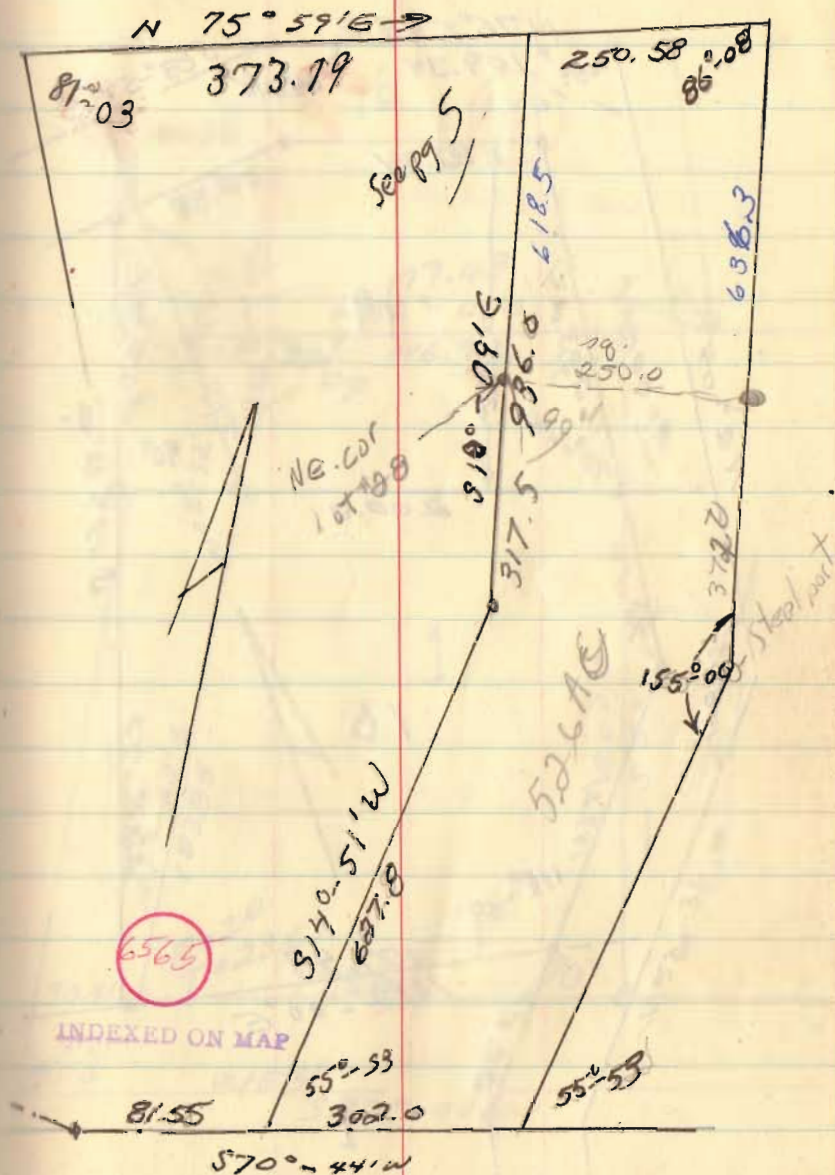
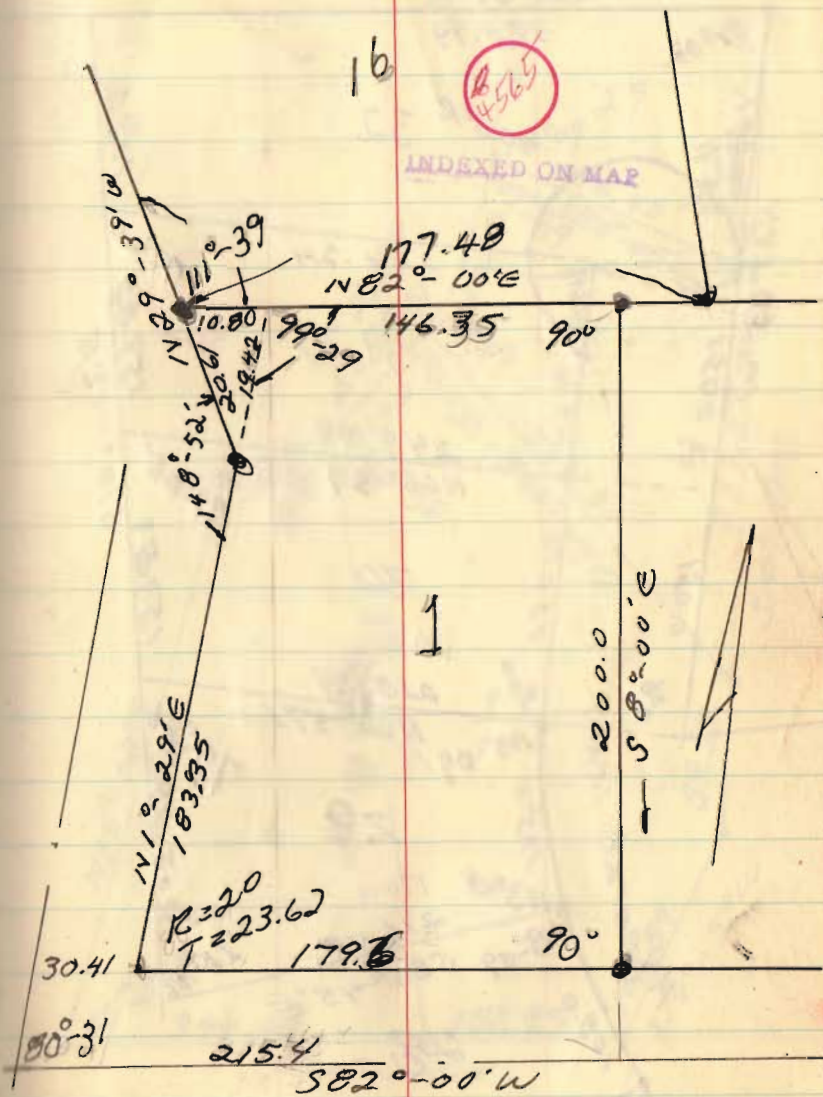
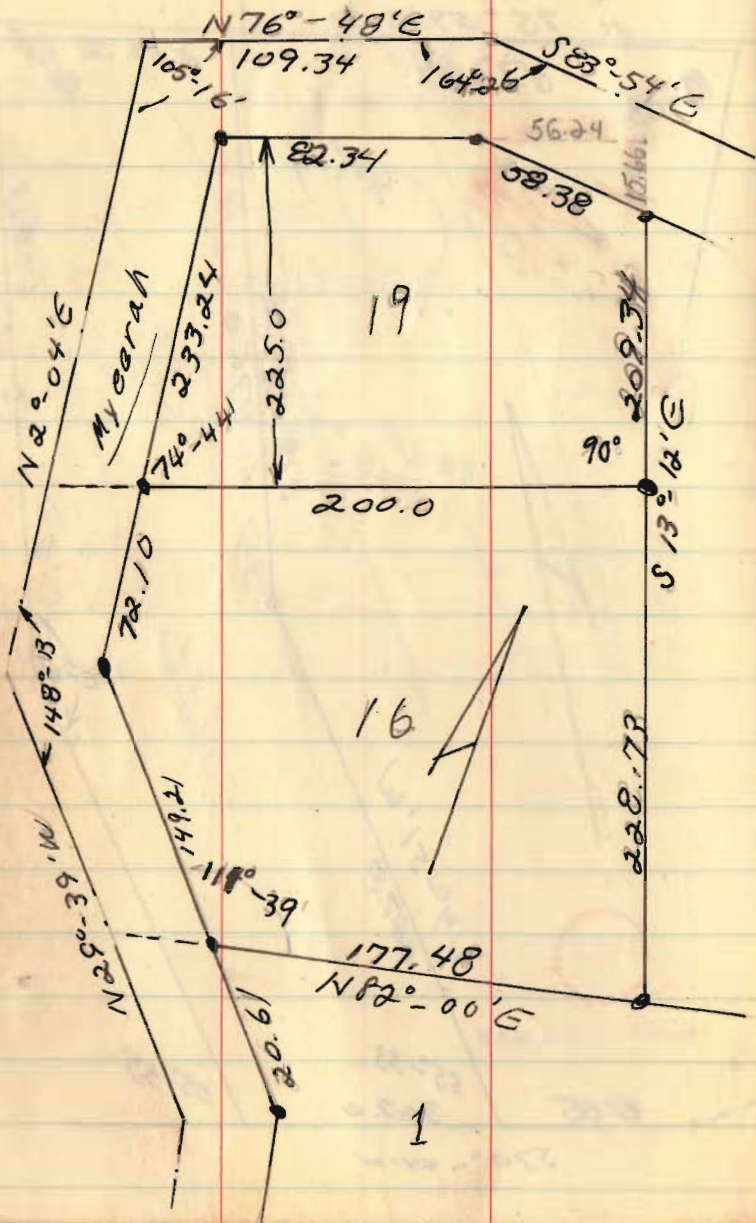
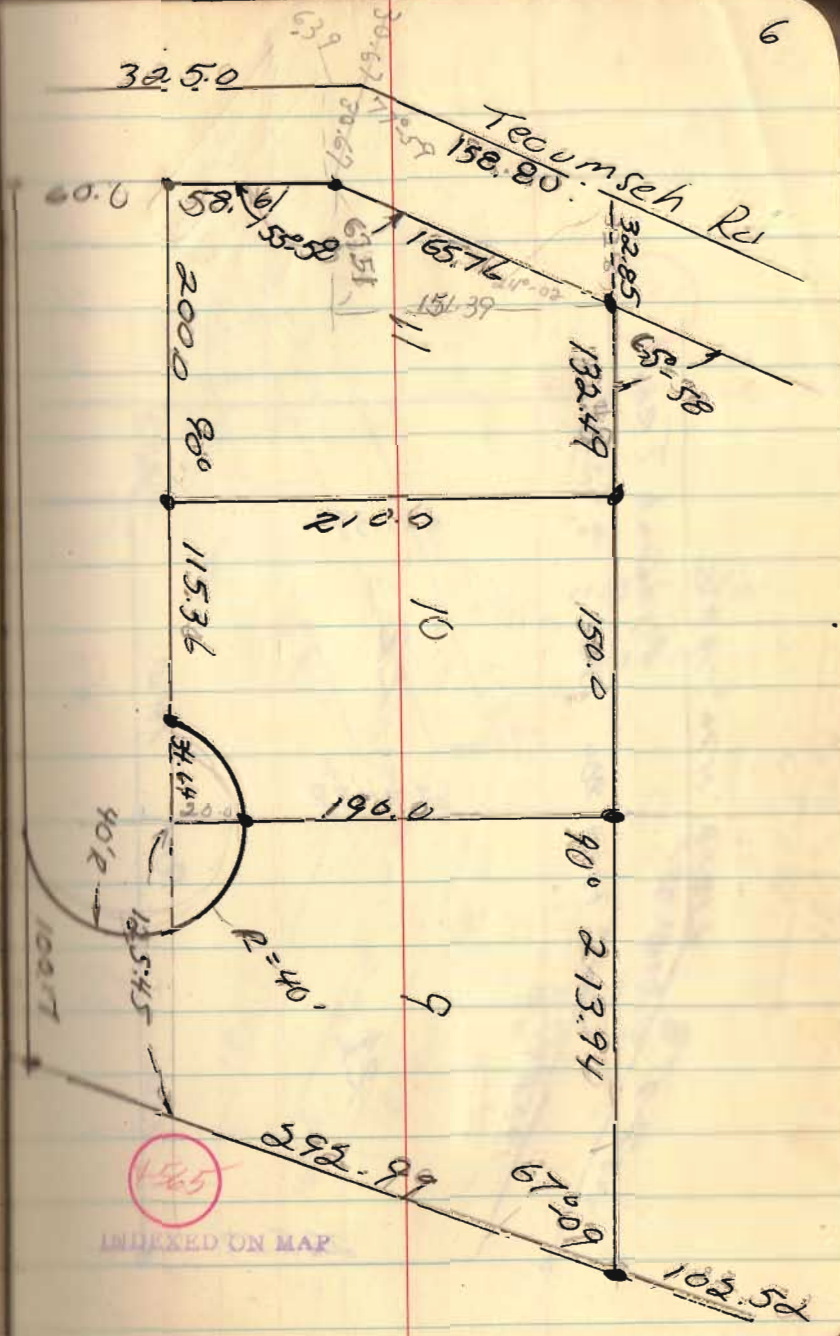
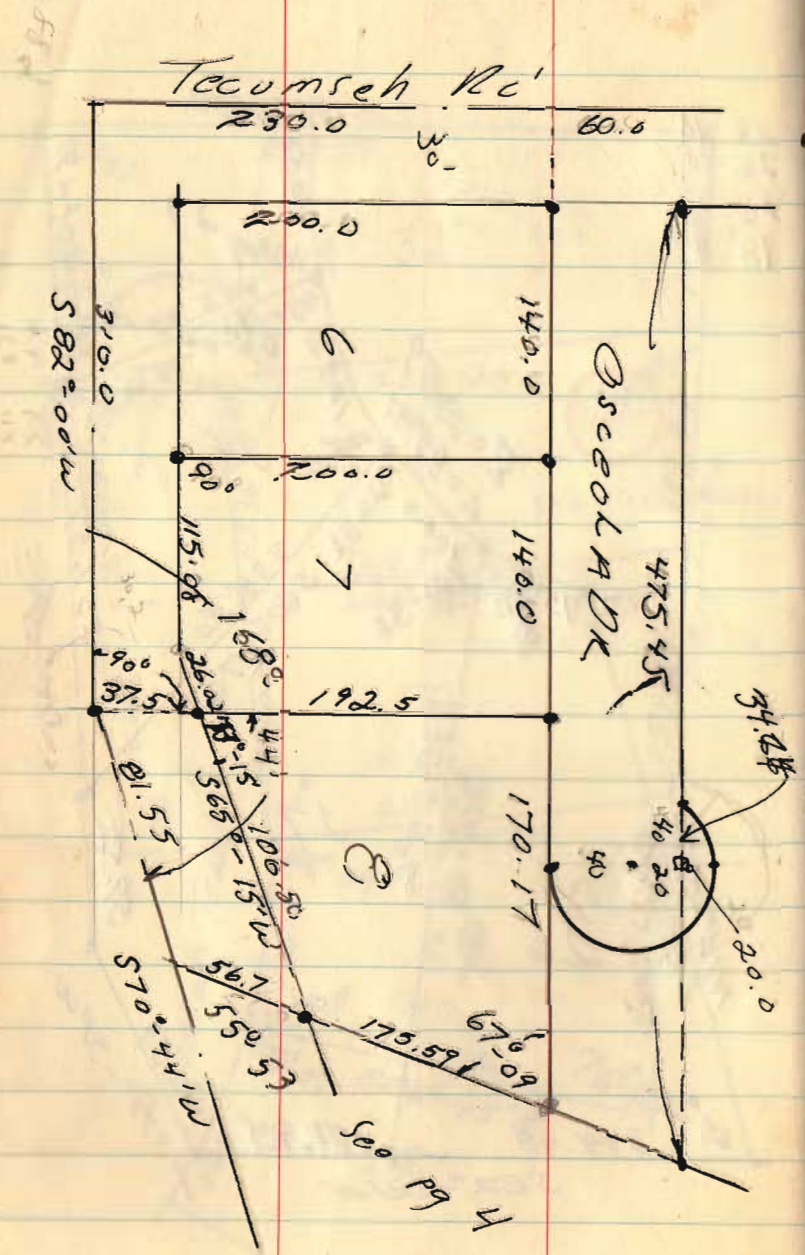


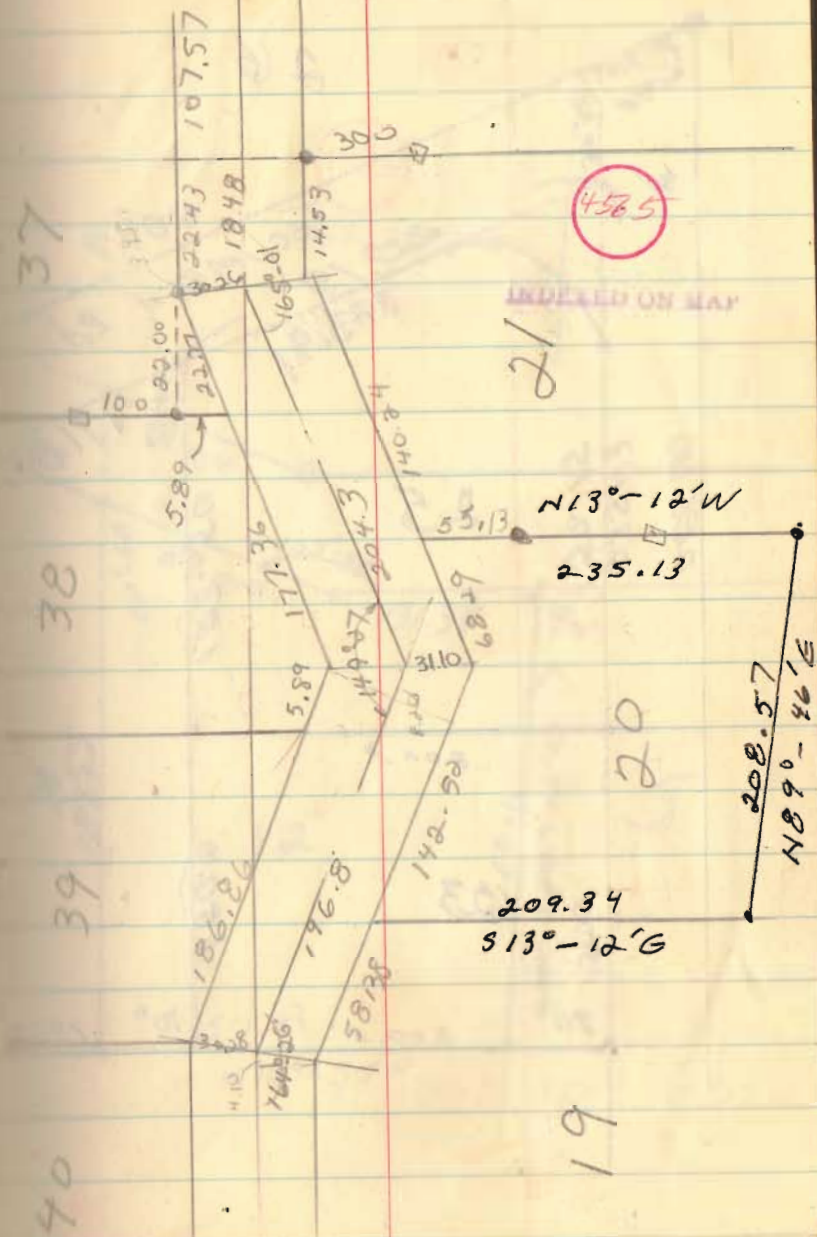
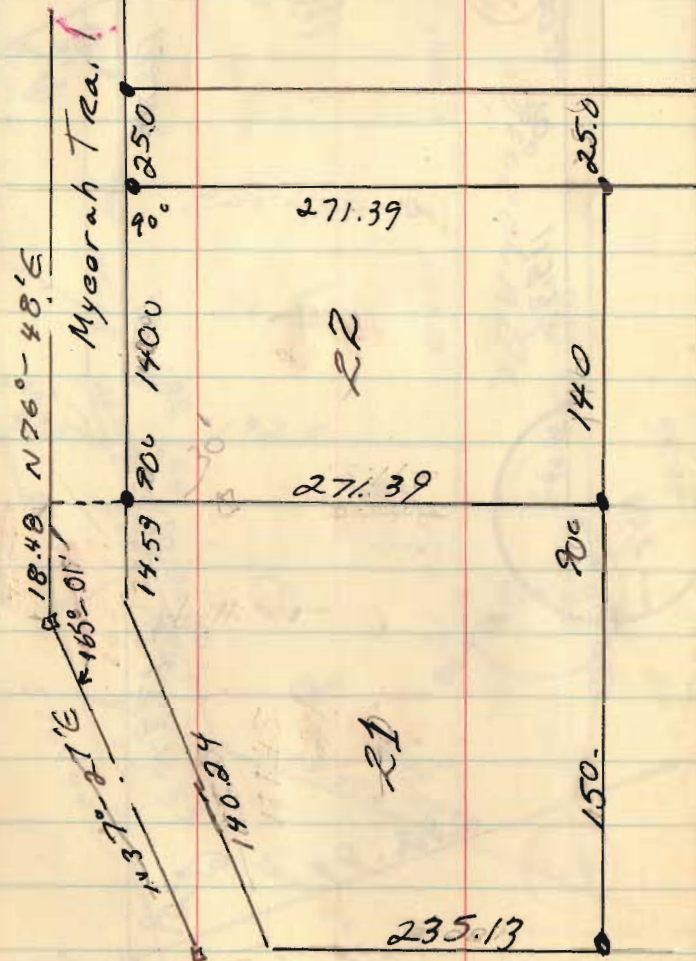
0+00	4	N. R. 287	
56.70		R/W	
232.29	8-9		
525.28	9-20		
627.80	Angle		
66.27	27-28		
321.32	28-29	321.32	
523.66	29-30		
677.88	30-31	257.57	
832.16	31-32	59.52	
936.00	32	257.99	

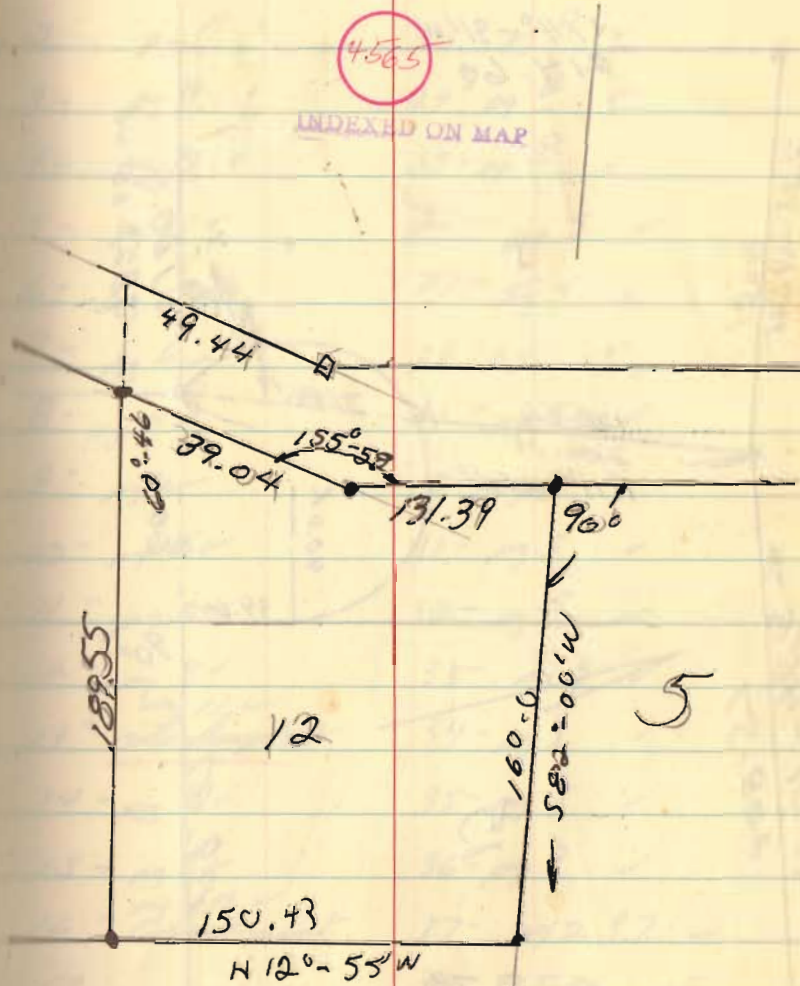
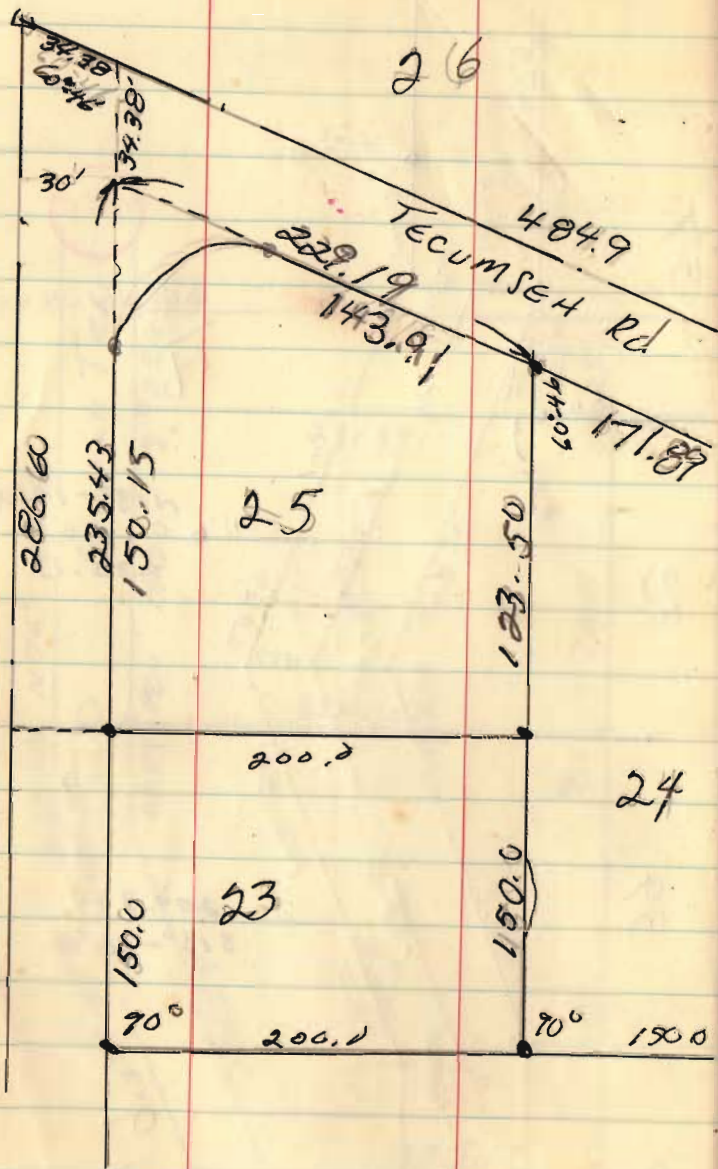
East Side of Prop. 4

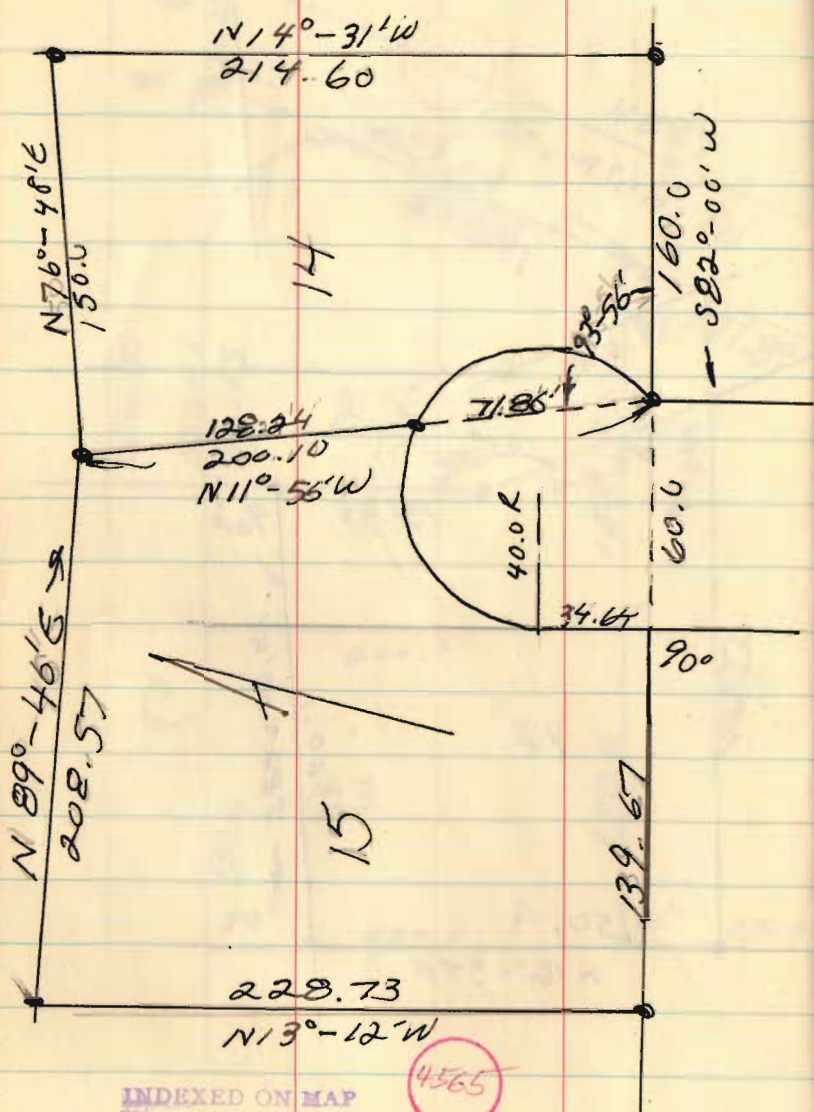






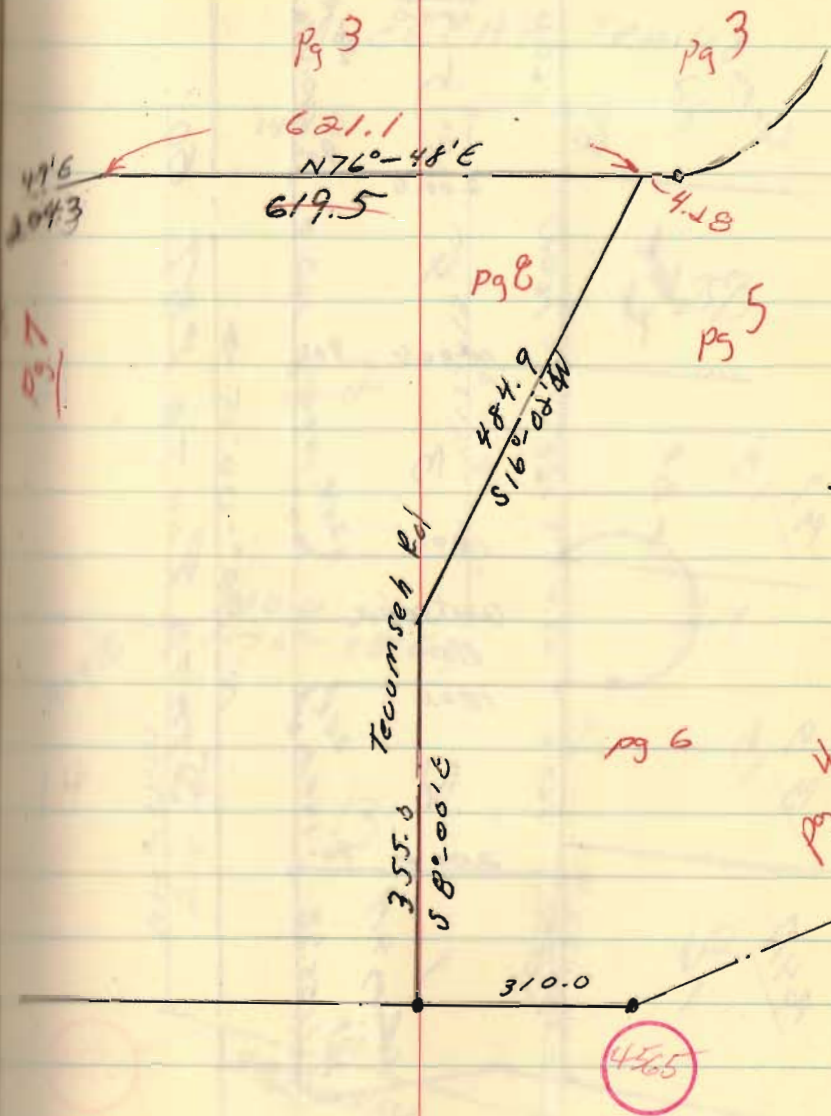
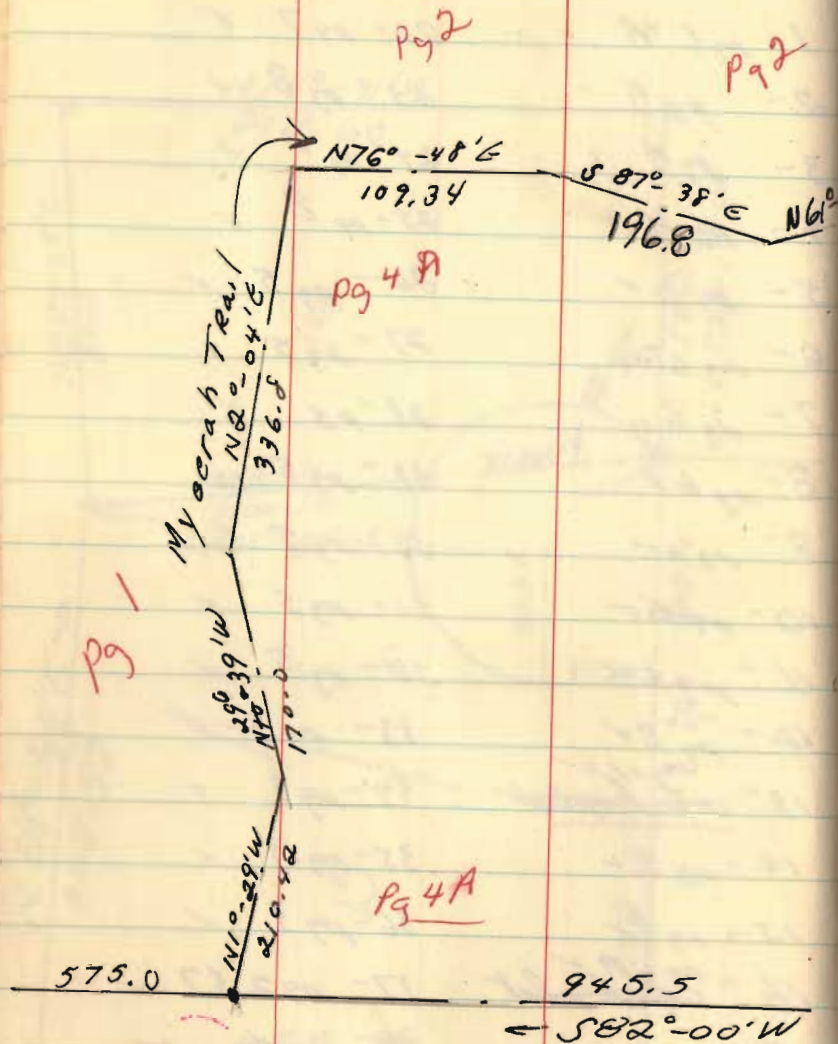




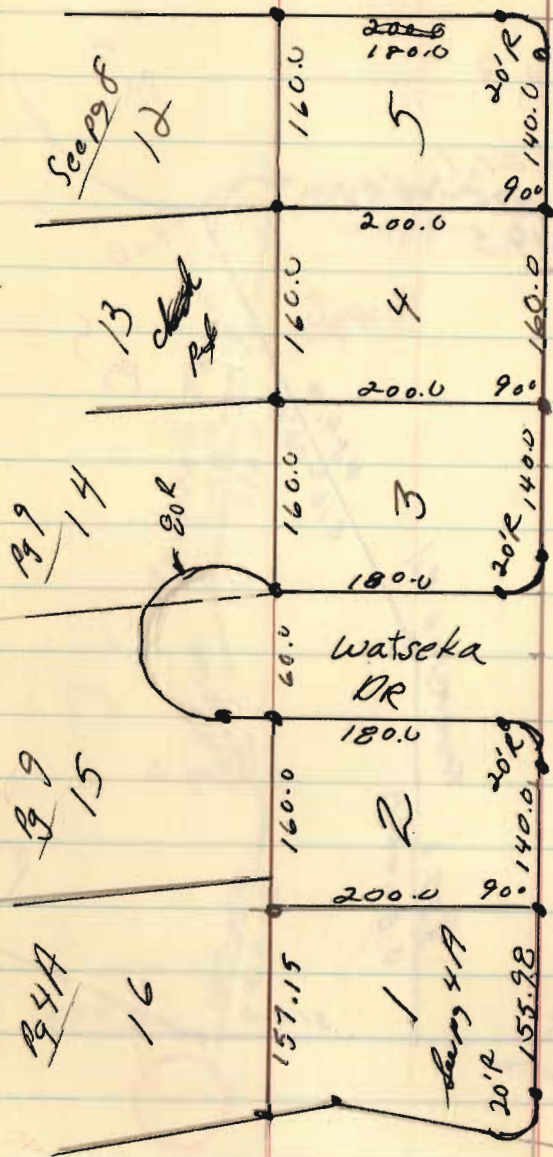


INDEXED ON MAP 4565

- 1- pg 4A ✓
- 2- pg 4 ✓
- 3- pg 4 ✓
- 4- pg 4 ✓
- 5- pg 11 ✓
- 6- pg 6 ✓
- 7- pg 6 ✓
- 8- pg 6 ✓
- 9- pg 6 ✓
- 10- pg 6 ✓
- 11- pg 6 ✓
- 12- pg 8 ✓
- 13- ~~pg 11~~
- 14- pg 9 ✓
- 15- pg 9 ✓
- 16- ~~pg 4A~~ ✓
- 17- pg 1 ✓
- 18- pg 1 ✓
- 19- pg 4A ✓
- 20- ~~pg 7A~~
- 21- pg 7 ✓
- 22- pg 7 ✓
- 23- pg 8 ✓
- 24- pg 8 ✓
- 25- pg 8 ✓
- 26- pg 5 ✓
- 27- pg 5 ✓
- 28- pg 5 ✓
- 29- pg 5 ✓
- 30- pg 5 ✓
- 31- pg 5 ✓
- 32- pg 5 ✓
- 33- pg 3 ✓
- 34- pg 3 ✓
- 35- pg 3 ✓
- 36- pg 3 ✓
- 37- pg 2 §7 ✓
- 38- pg 2 ✓
- 39- pg 2 ✓
- 40- pg 2 ✓
- 41- pg 2 ✓

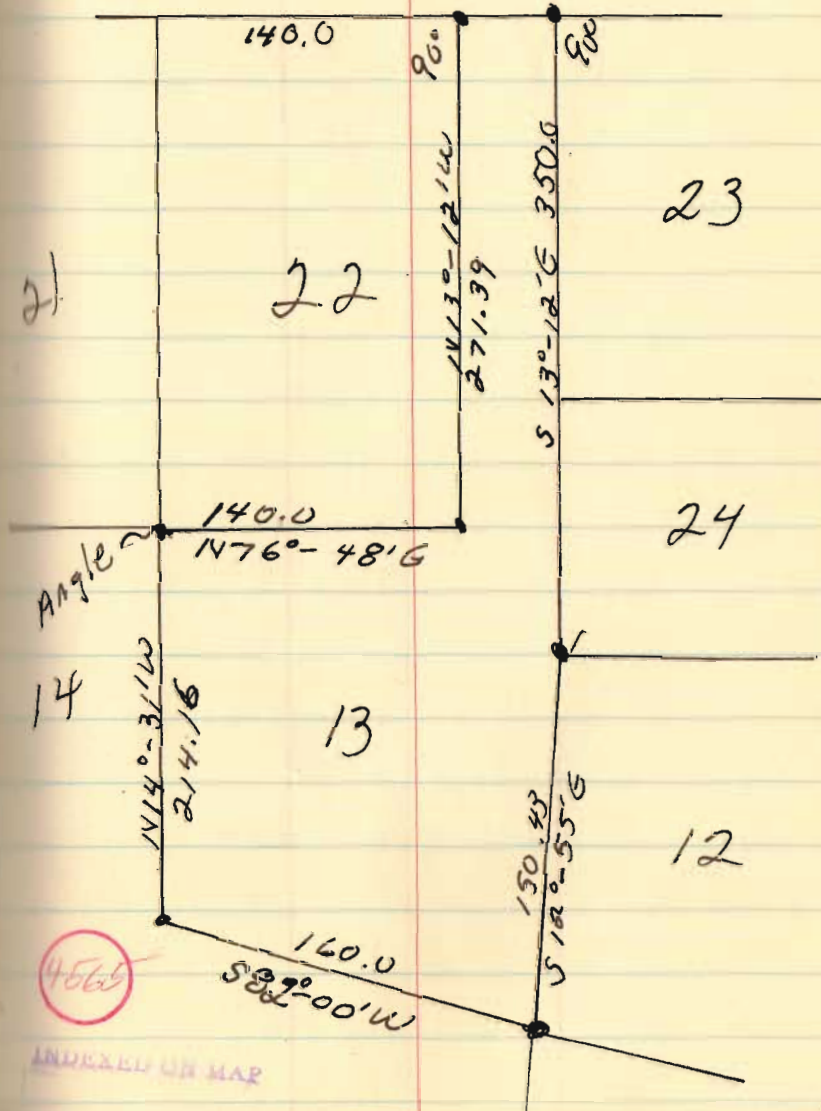


INDEXED ON MAP

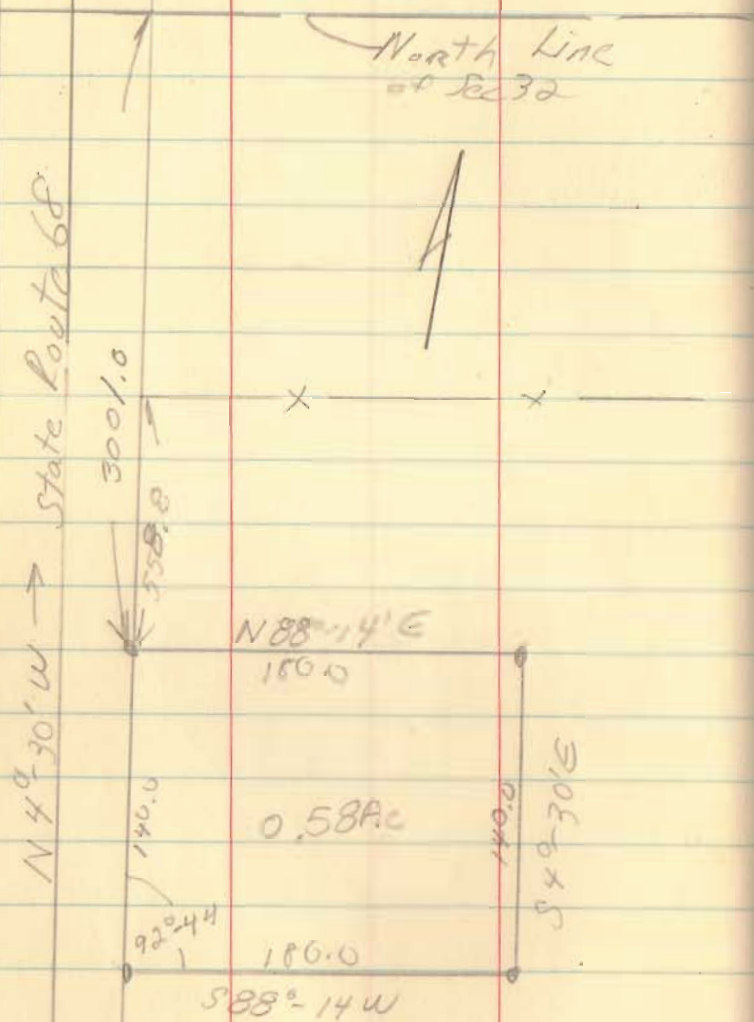


STATE ROUTE 287 50'

MYCERAH TRAIL

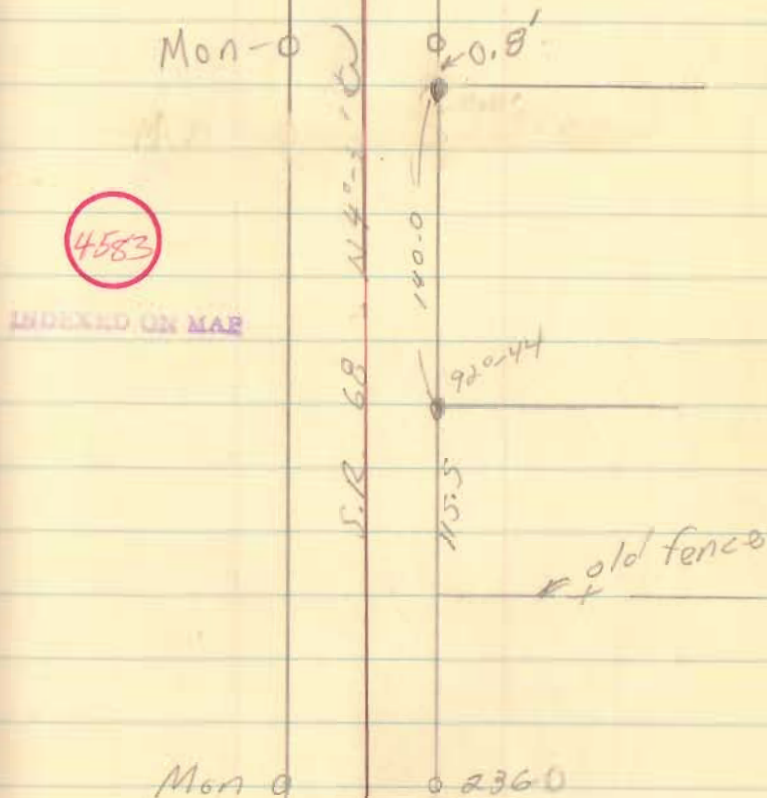


Life Survey
 Sec 32; T-4, R-14
 Harris Liberty Twp



Sept. 6, 69

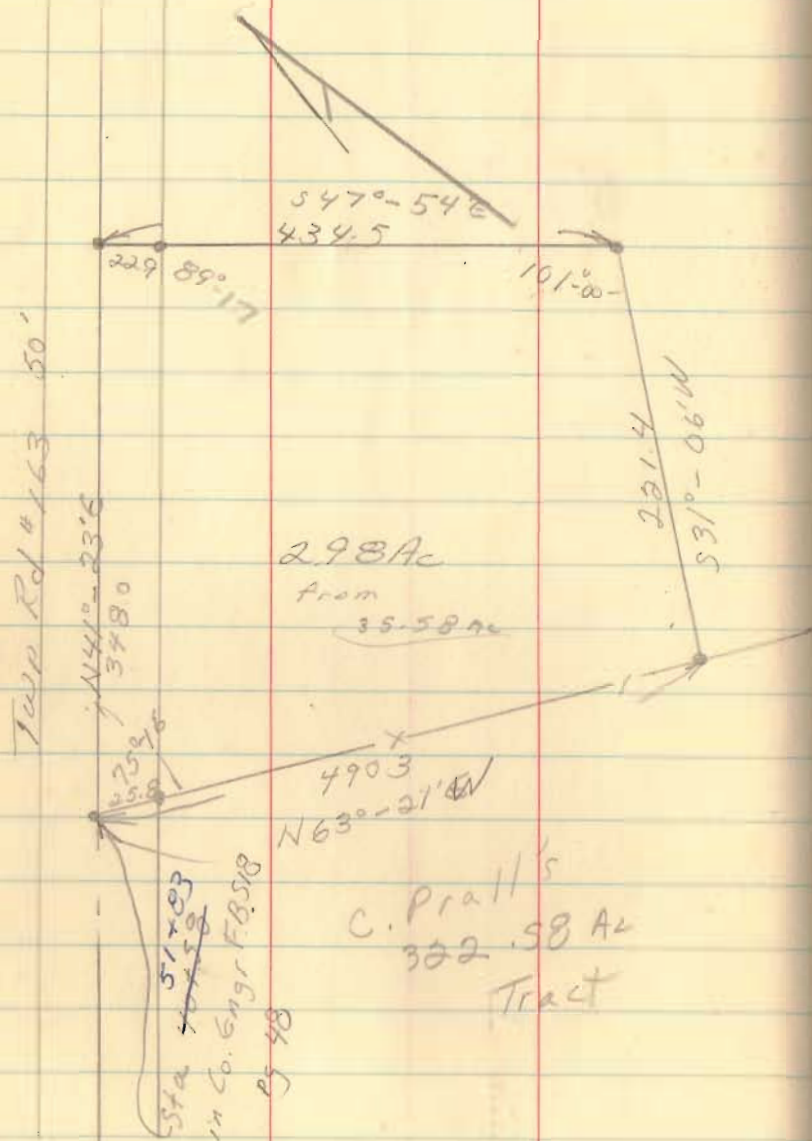
15



C. Prall to Stanley Survey
 Monroe Twp
 V.M.S. # 4570

Oct. 11, 69

17

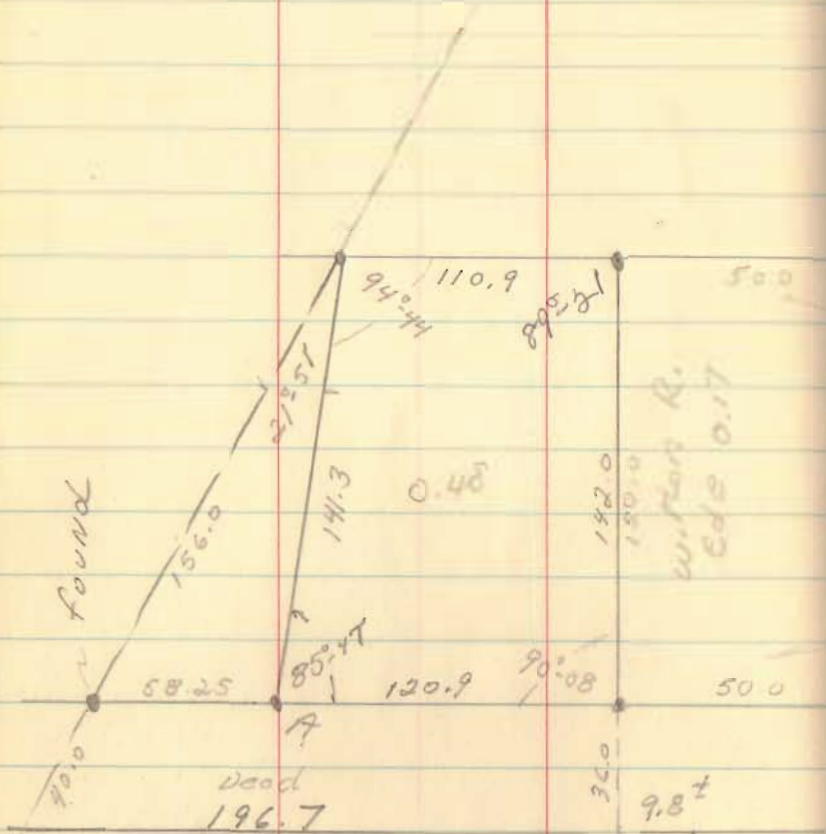


Sec Desc. of 70+

Waldo William
 CA 355-2893
 West Mansfield

May, 1970

19



5882

INDEXED ON MAP

S.P. 47



← N14°30'W
 MAIN ST.

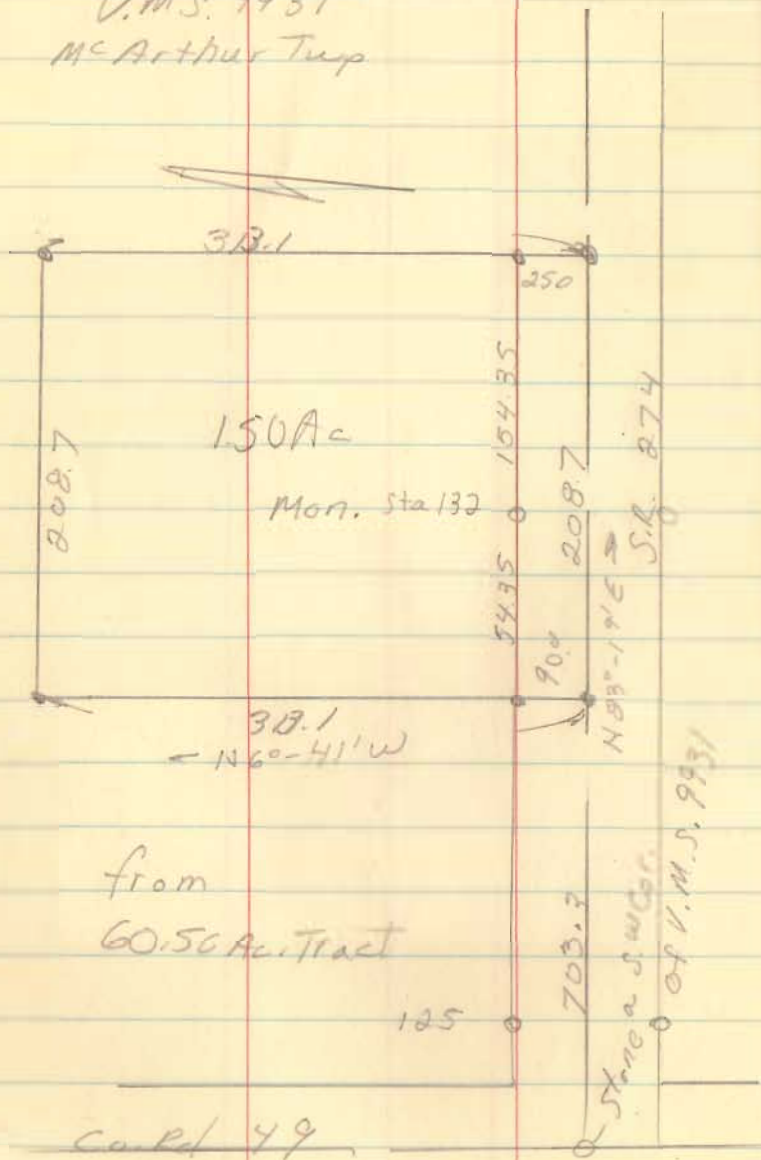
was unable to check
 from A to B, used dead
 measurements where
 possible!

for Lomie Voorhies Ph(666-2672)
from Vern Beard

V.M.S. 9931
McArthur Trp

May, 1970

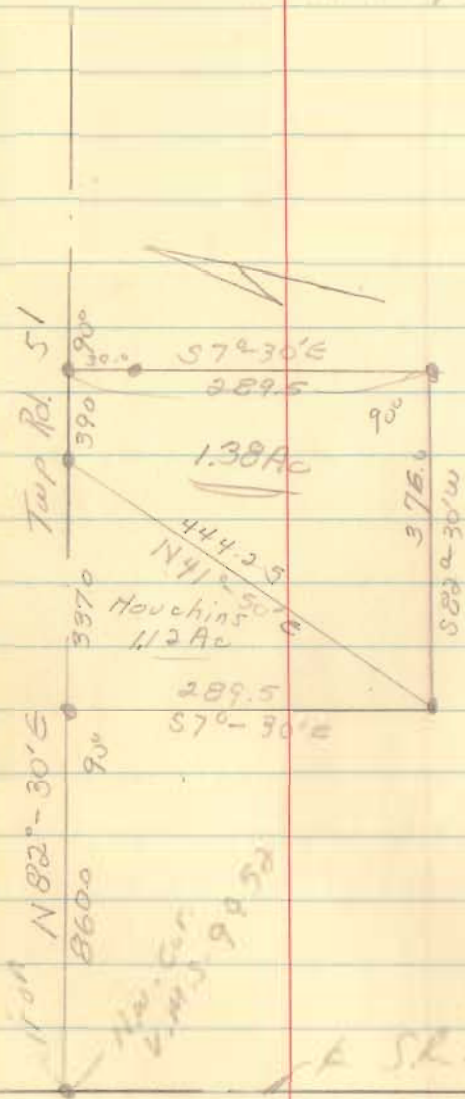
21



6094

INDEXED ON MAP

Forsythe to Houchins
U.M.S. 9952
Richland Twp



From 30.29 Ac

A SR. 638

May 20, 70

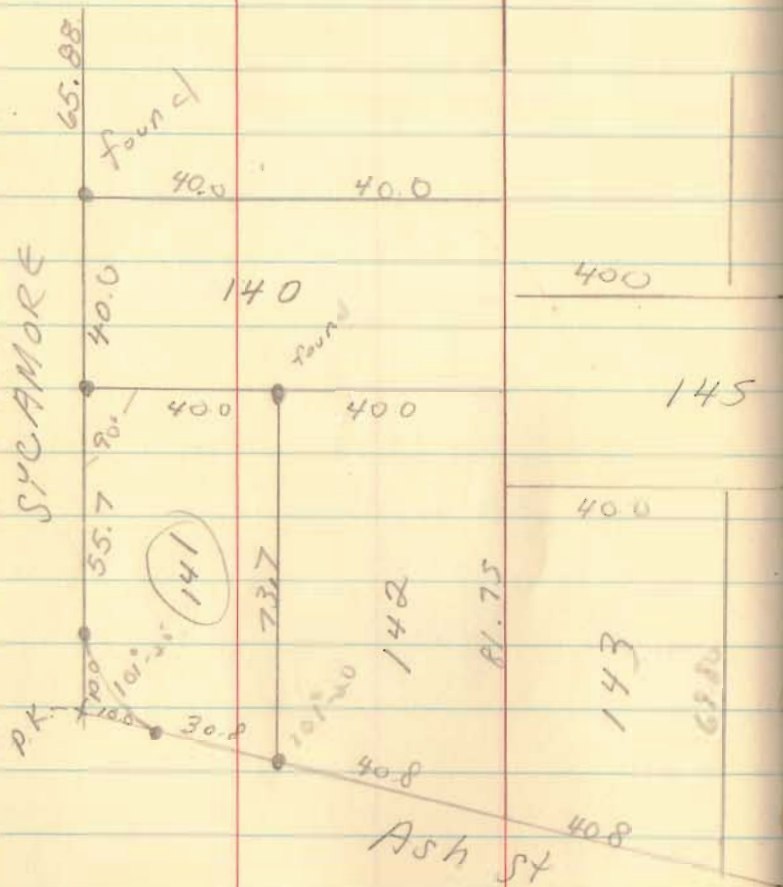
22

Pl 464-4034
Russell/Forsythe
Route 2
Ball Center

4694

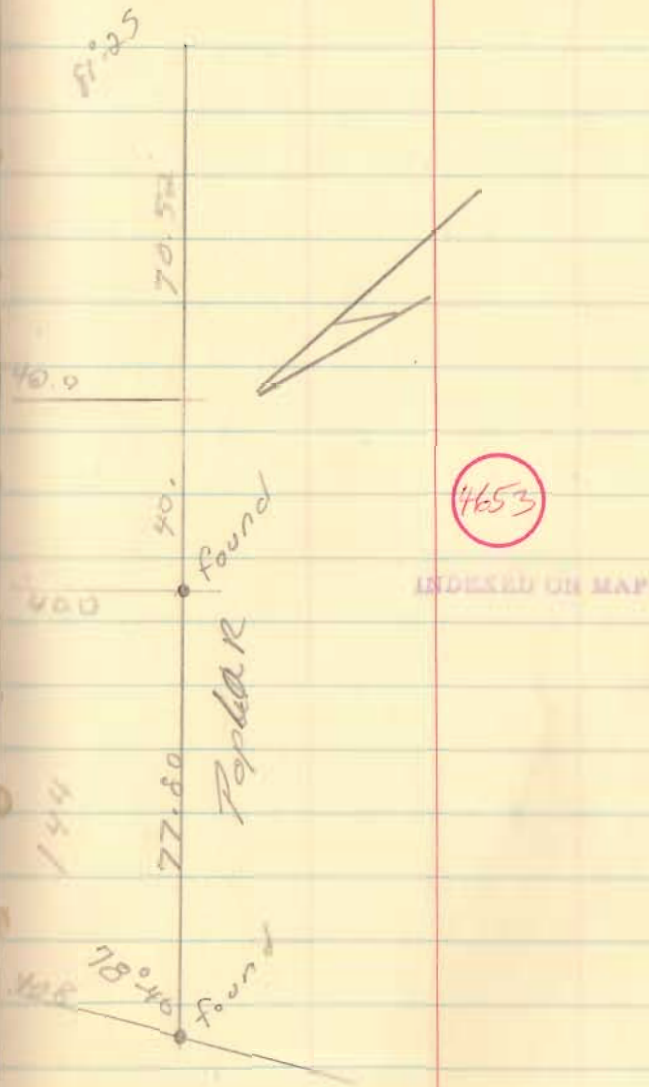
INDEXED ON MAP

Lot 141
of
Waterbury A1lot



May 23, 1970

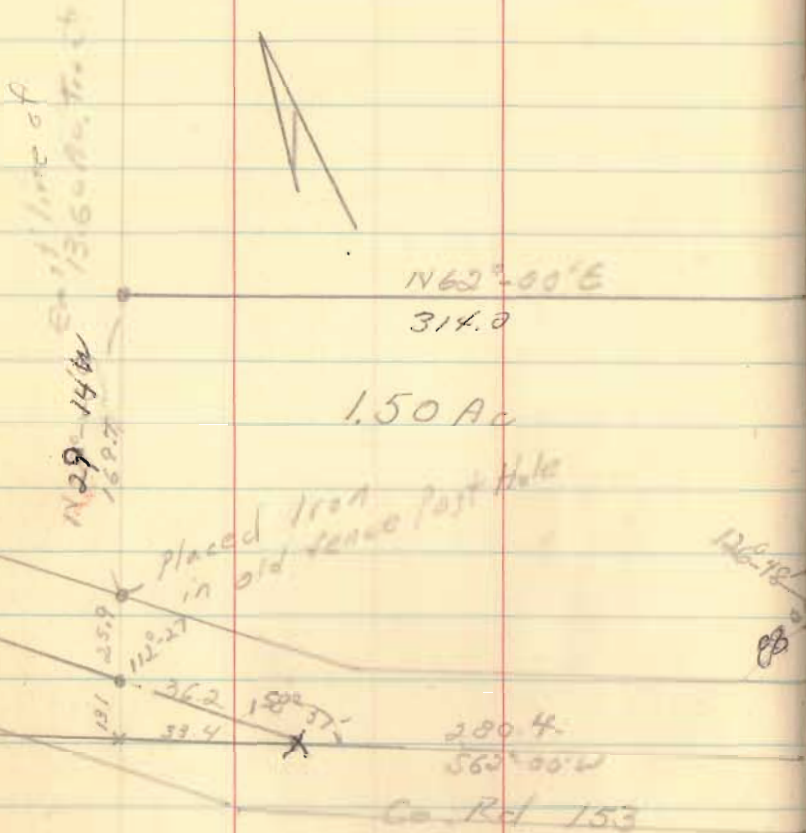
24



Nagar to Heath

V.M.S. 4606

Zane Twp



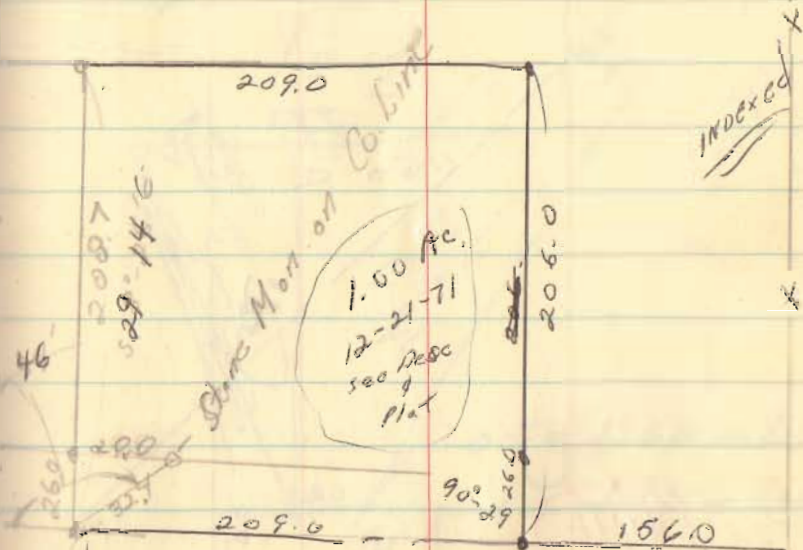
June, 23, 1970

26

Route 1; East Liberty

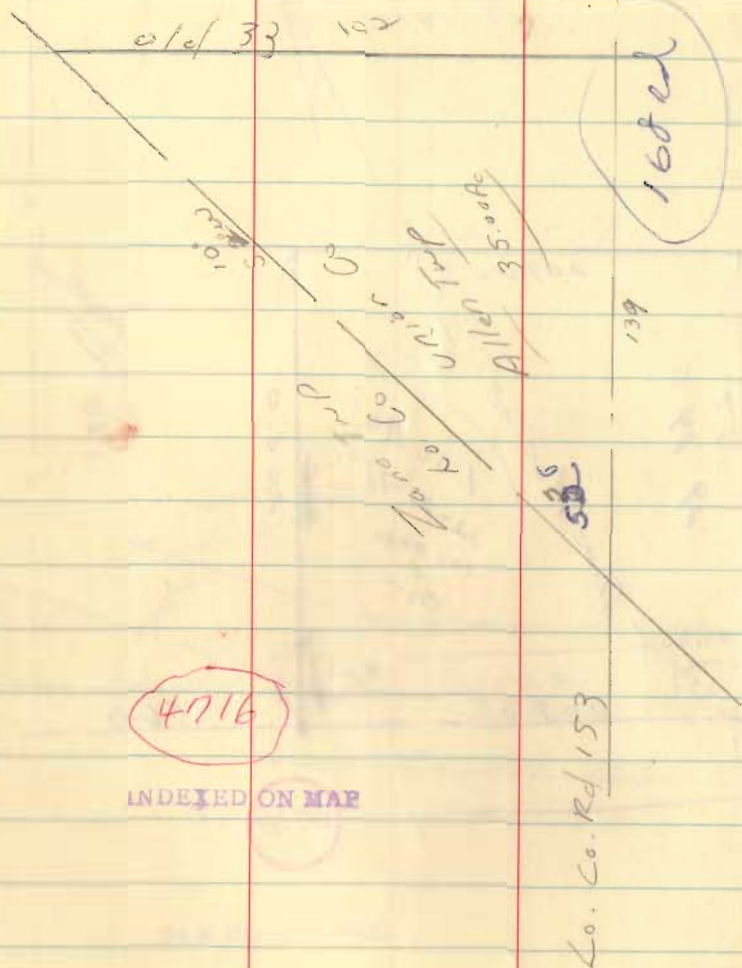
666-2744

M. McLeberg



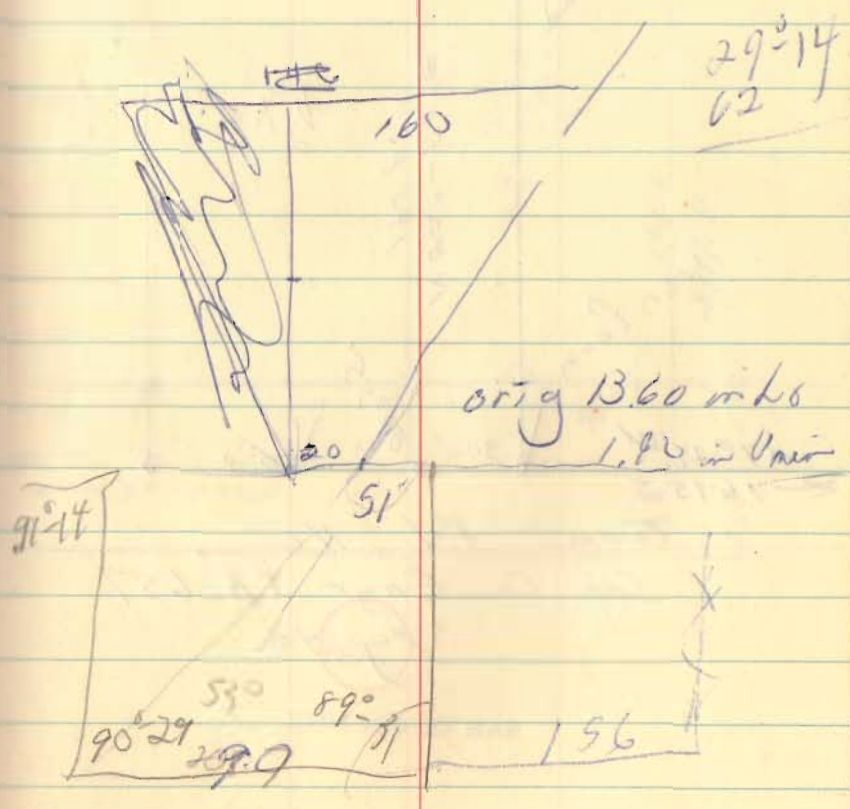
4916

INDEXED ON MAP



27

Rd	S 59 ¹ / ₂ W	318.0 19.28 pl	from G. line
	N 31 ³ / ₄ W	110 60 pl	29 ¹ / ₂
	N 54° E	179.0 41	52 37 ¹ / ₂
	S 30 ¹ / ₂ E	63.5 pl	
NR	S 59 ¹ / ₂ W	40 pl 660. 15 ¹ / ₂ Ac	31 ¹ / ₂

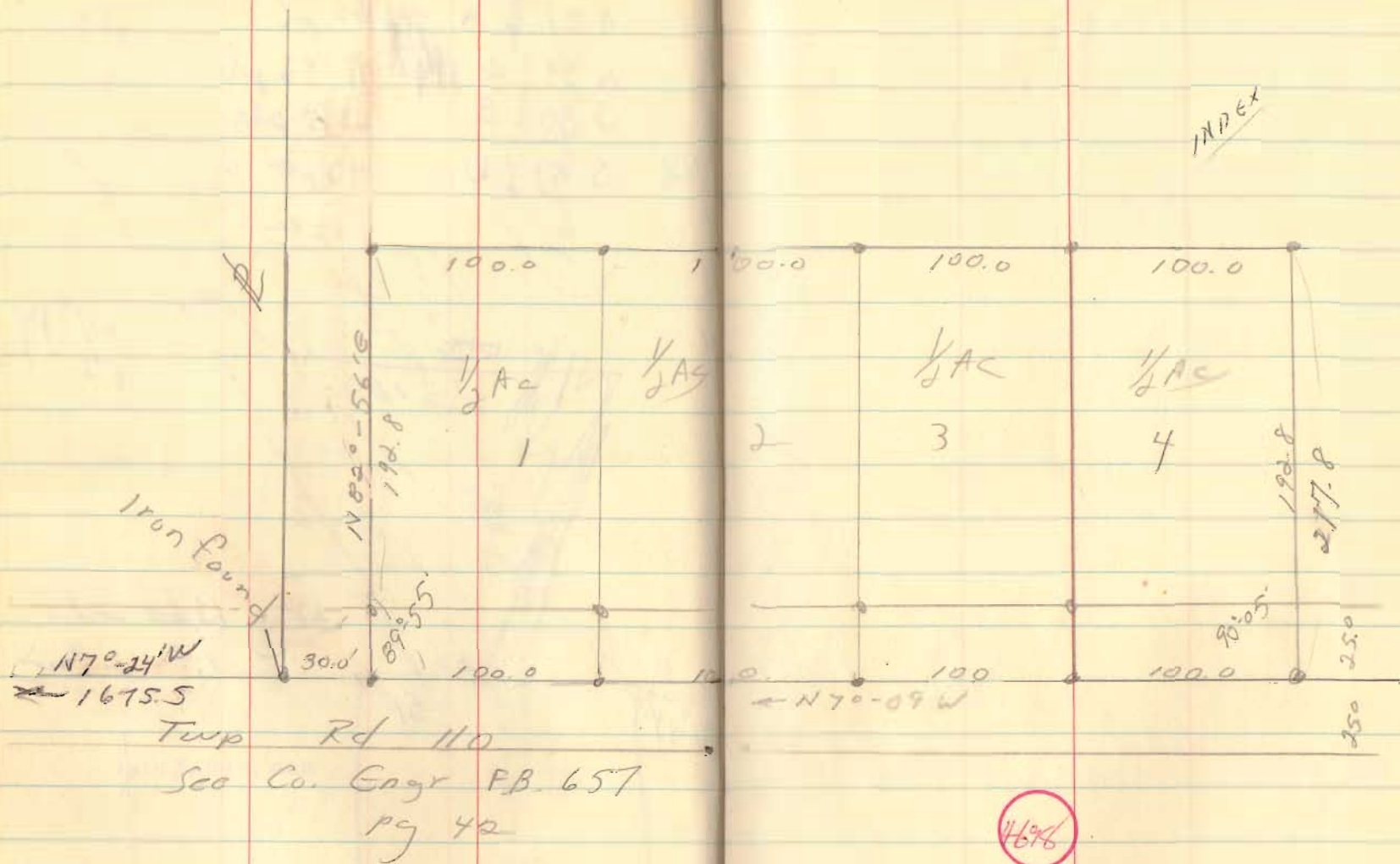


Virgil Fryling
 V.M.S. 9955
 Rush Creek Twp

Sunc, 2370

28

INDEX



Twp Rd 110
 Sec Co. Engr P.B. 657
 pg 42

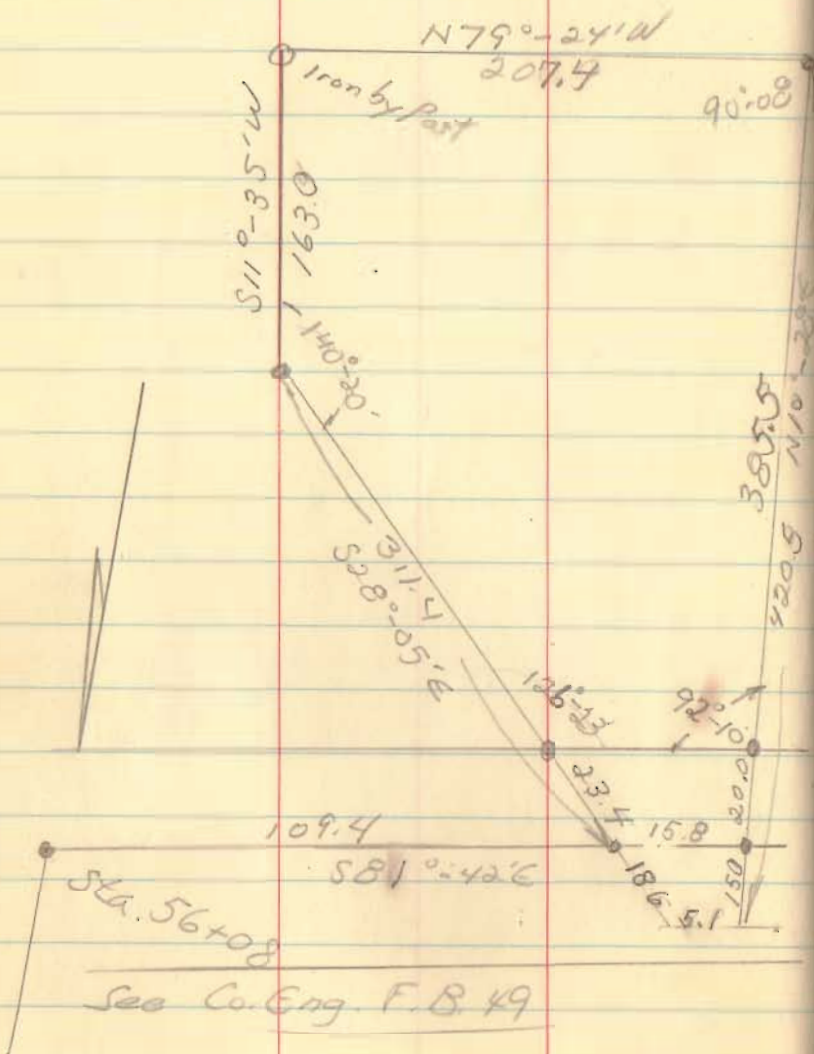
46%

INDEXED ON MAP

Ropp Survey
 V.M.S. 8303-8485
 Monroe Twp

June, 1970

30



INDEXED

4690

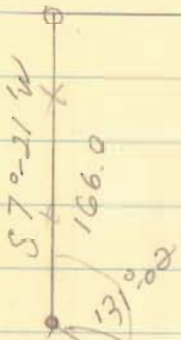
INDEXED ON MAP

Twp Ref 55

June 14, 74

Ropp to Gaver.
V.M.S. 8303-8485
Monroe Twp

N 80°-38' W
1295.0
(cal.)



19.00

from
43.10

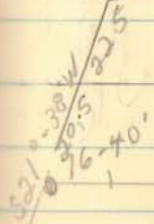
1087
S 41°-37' E

Post

S 81°-00' E
155.0

139°-55'

179°-18'

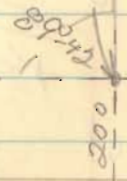


315.0

3198
S 81°-42' E

Cor. Post

896.56
N 89°-00' E

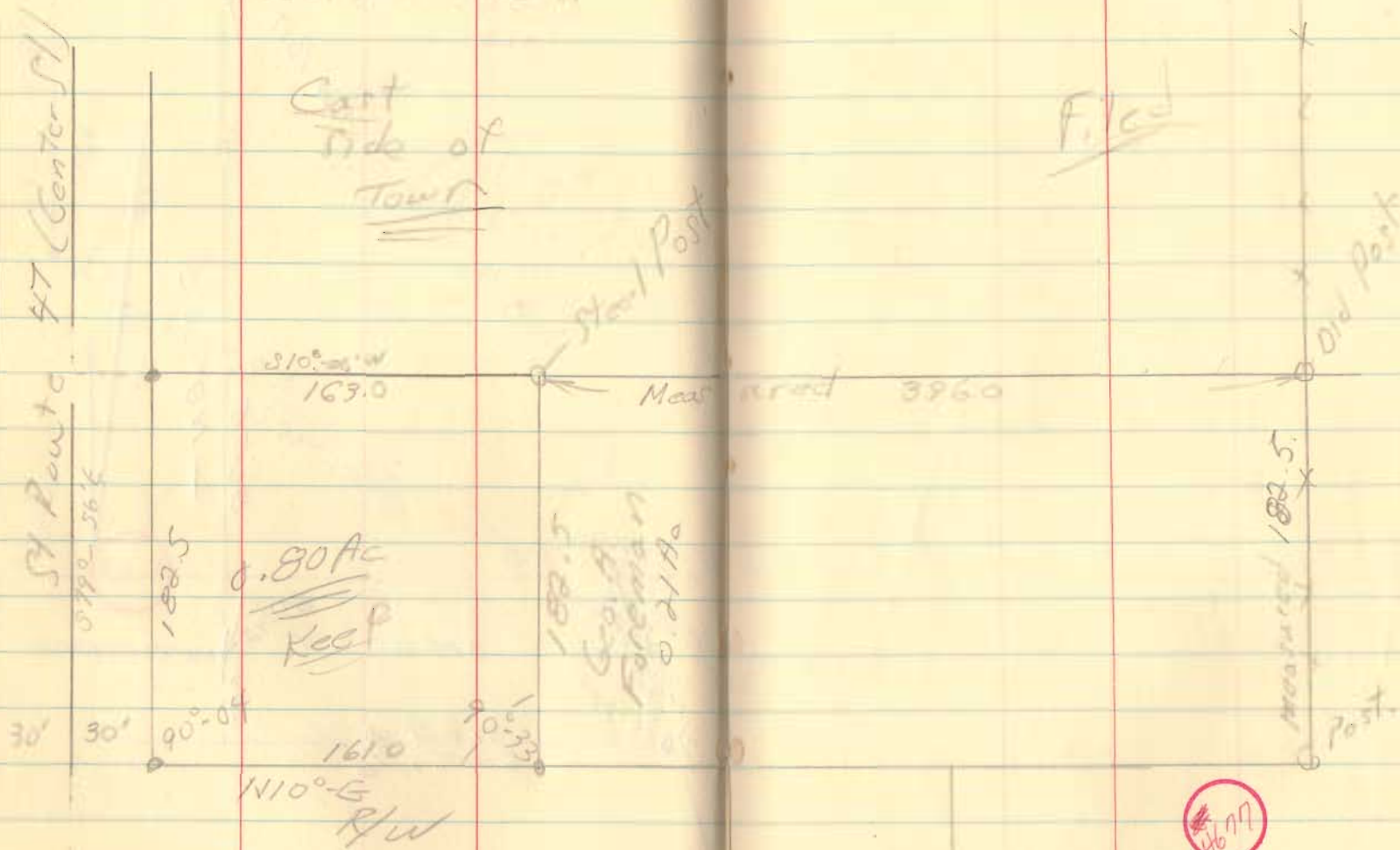


4811

INDEXED ON MAP

Parson to Brannon
V.M.S. 775-6155

Bokerscreek Twp
West Mansfield



Jan 1970

32

Filed

Armenstrout to R. Stratton
V.M.S. 4570
Zano Twp

4715

INDEXED ON MAP

filed

Map rec
Zano Twp

173.40
E Twp Rd 29

N 25° 15' E 331.5

6° 24' N 33° 30' E
200.0

81° 28'

N 66° W

900
S 66° 00' E
from AC 250

0.71 Ac

S 66° 00' E
200.0

1.00 Ac

200.0

8° 52'

220.0

34+69
Sta
See W 66° W
P.B. 559.PJ 34

S 33° 52' W

115

Brown Fields
20.75 Ac Twp 34

July 8, 70

34

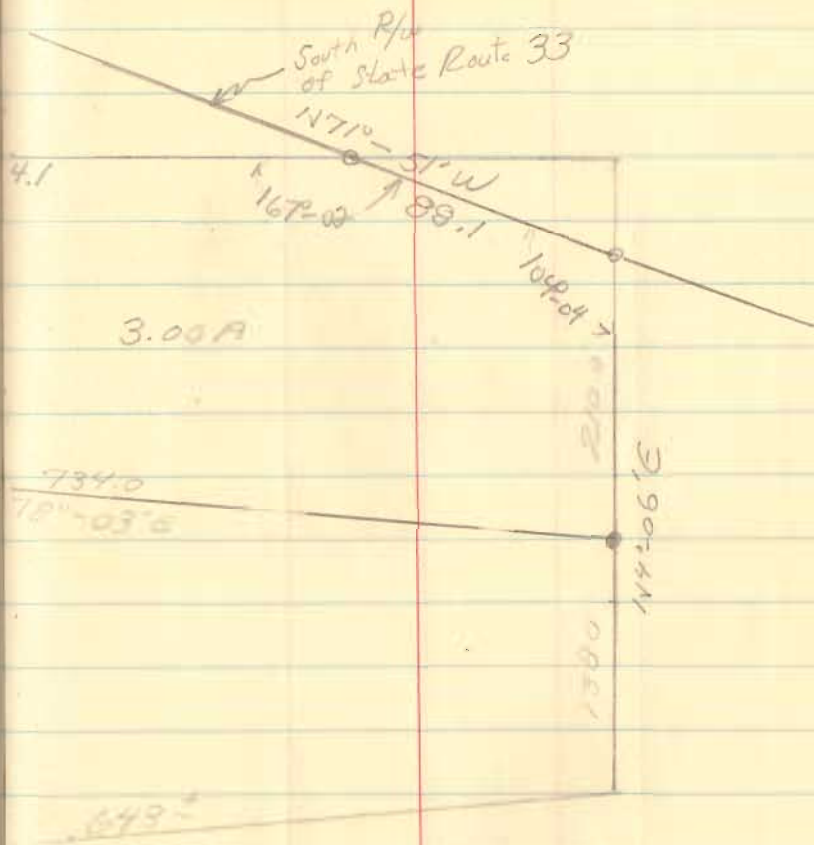
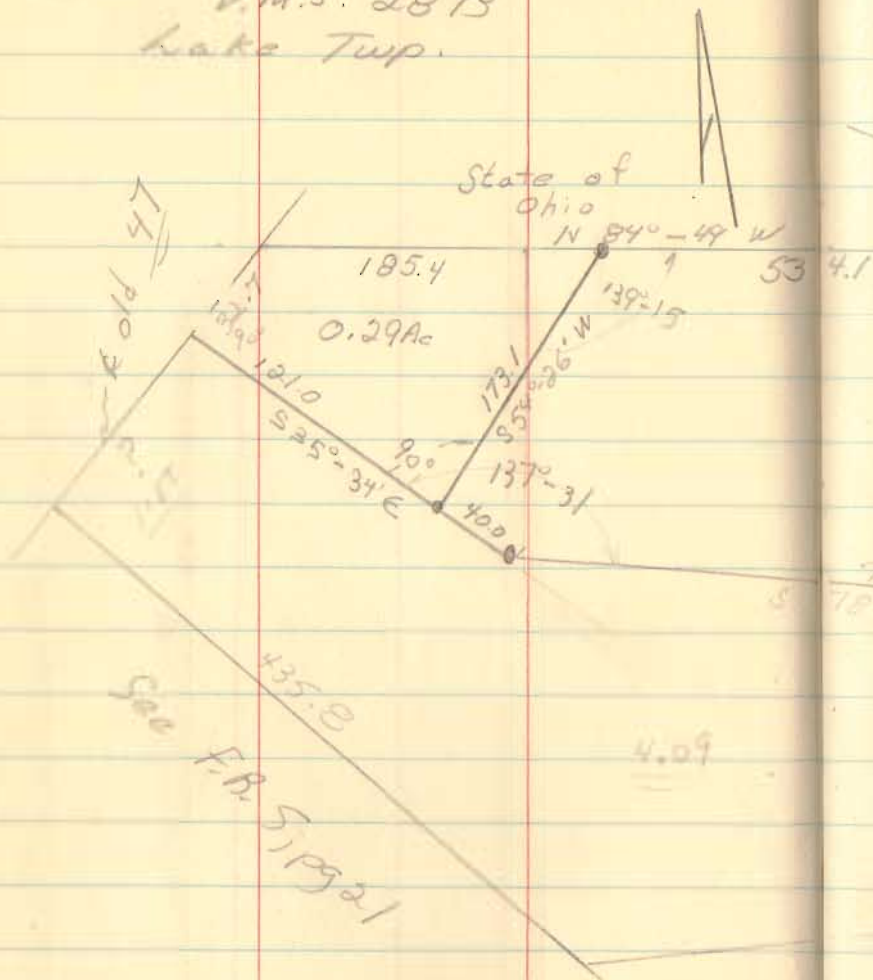
355-4603

Box 86
West Mansfield

Schradler to McDonald
 V.M.S. 2873
 Lake Twp.

July, 8, 70

36



from 7.09Ac

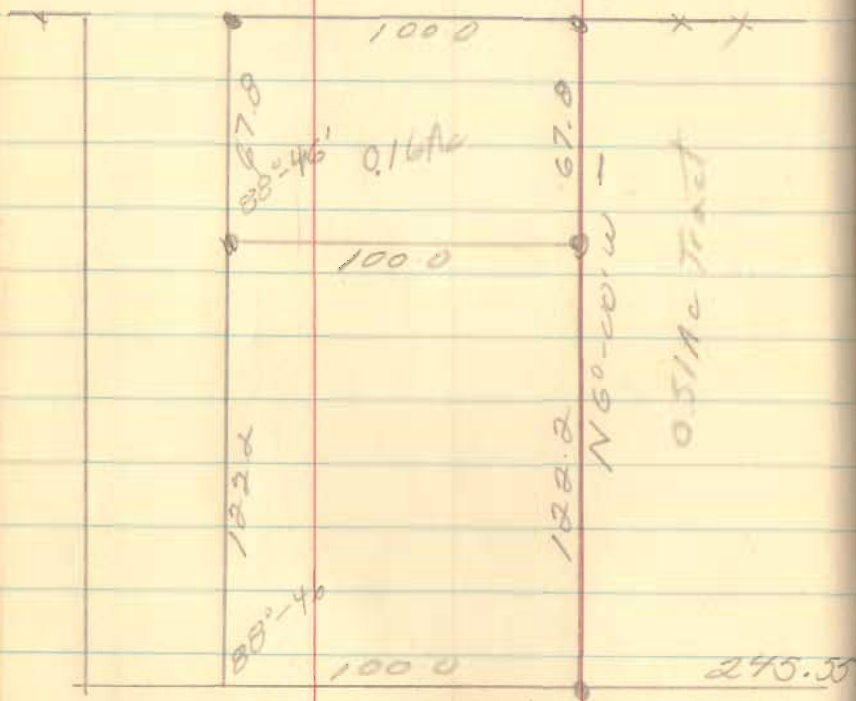
4879

INDEXED ON MAP

Filed

Sloan Survey
Washington Twp

See Co Engr file 2396



— S 88°-46' W

St. Route

July 27, 70

37

Filed



Co. Rd 269



INDEXED ON MAP

366

Shields Co Hartley
Mc Arthur Trp

July 27, 70

39

McPherson
section

Robert's line
not located

V.M.S.

10122-10248-10249

S 87°-13'E
392.8

90°

N 2°-47' E

323.9

07UA

2.23 AC

Total 2.93 AC

N 2°-17' W
925.2

92.35

48.3

178°-35

344.5

90°

N 85°-48' W

N 87°-13' W

See Co

F.B.

552
78

Eng' pg

✓ Filed

4665

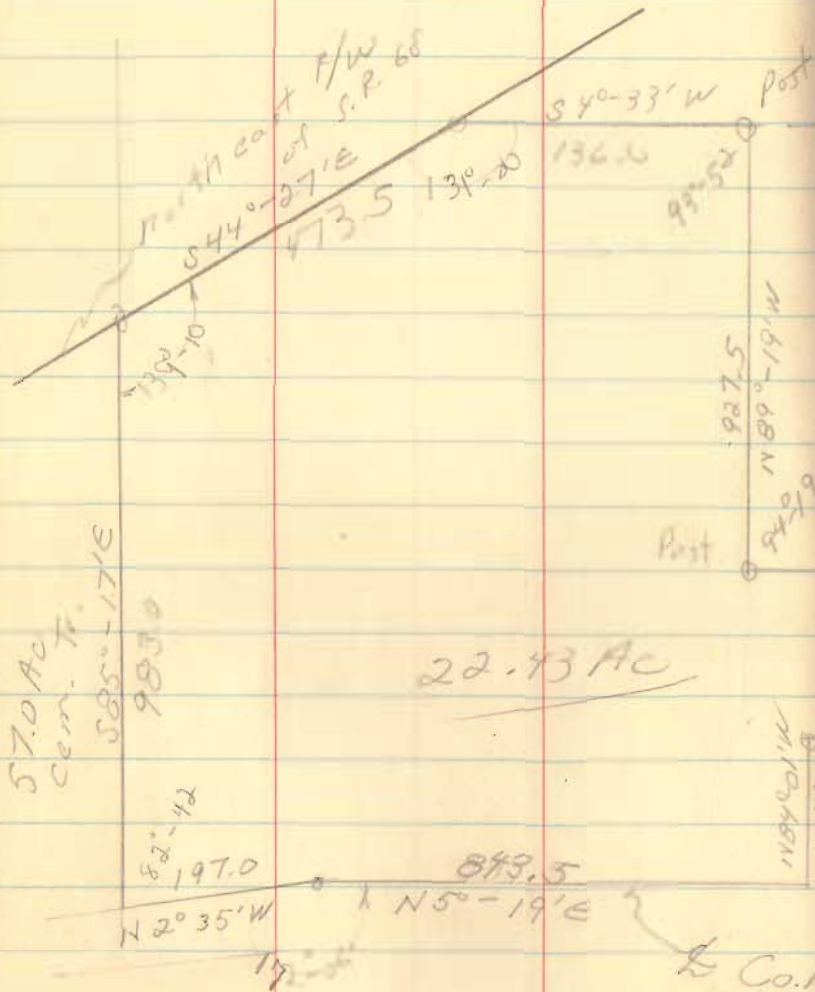
INDEXED ON MAP

Trp Rd 31

1262.5

Co. Rd. 91

Atta - Swisher
 Sec 2E, T-5 R-13
 Liberty Twp



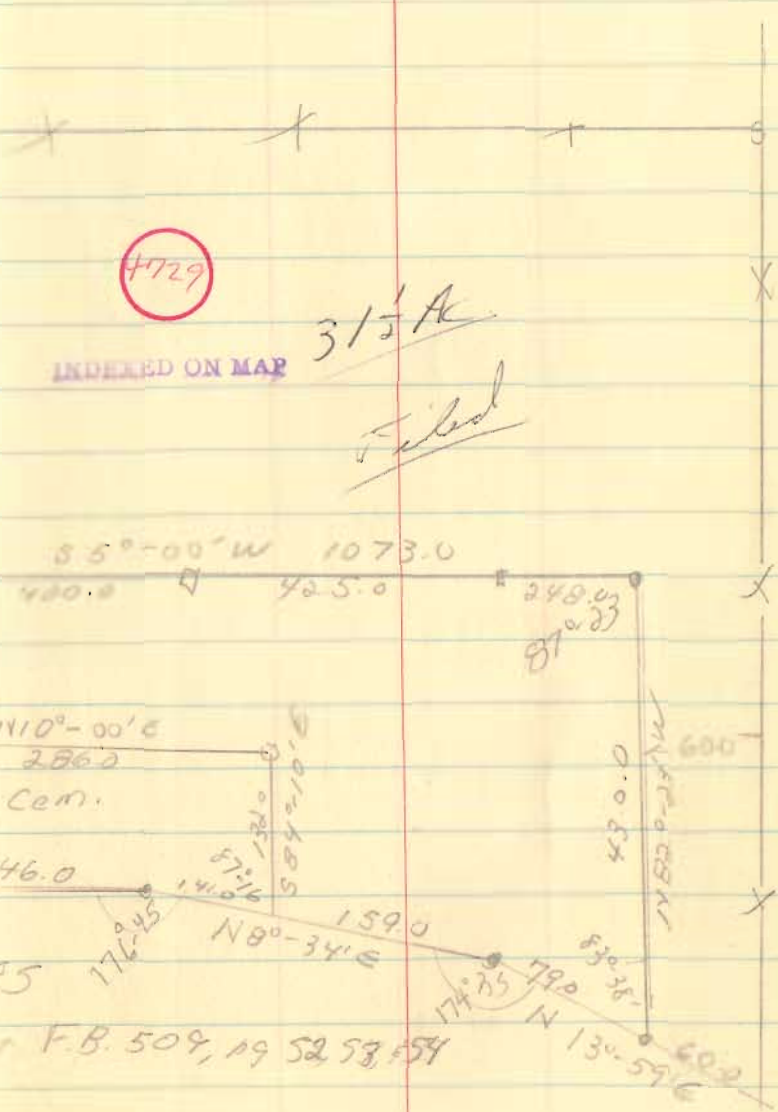
22.43 Ac

Co. Rd #5

Sec 2E, T-5 R-13 F.B. 509, 19 52 53, 54

Aug 1970

41



Lot # 4
West Mansfield
for
Mrs Ruth Ballinger

Main St 72.0'

90°-28'

50.0' 50.0' 50.0' 50.0'

150.0'

4

16.0' Alley

5

6

150.0'

Center St 60.0'

16.0' Alley

Aug 10, 70

43

filed

6554

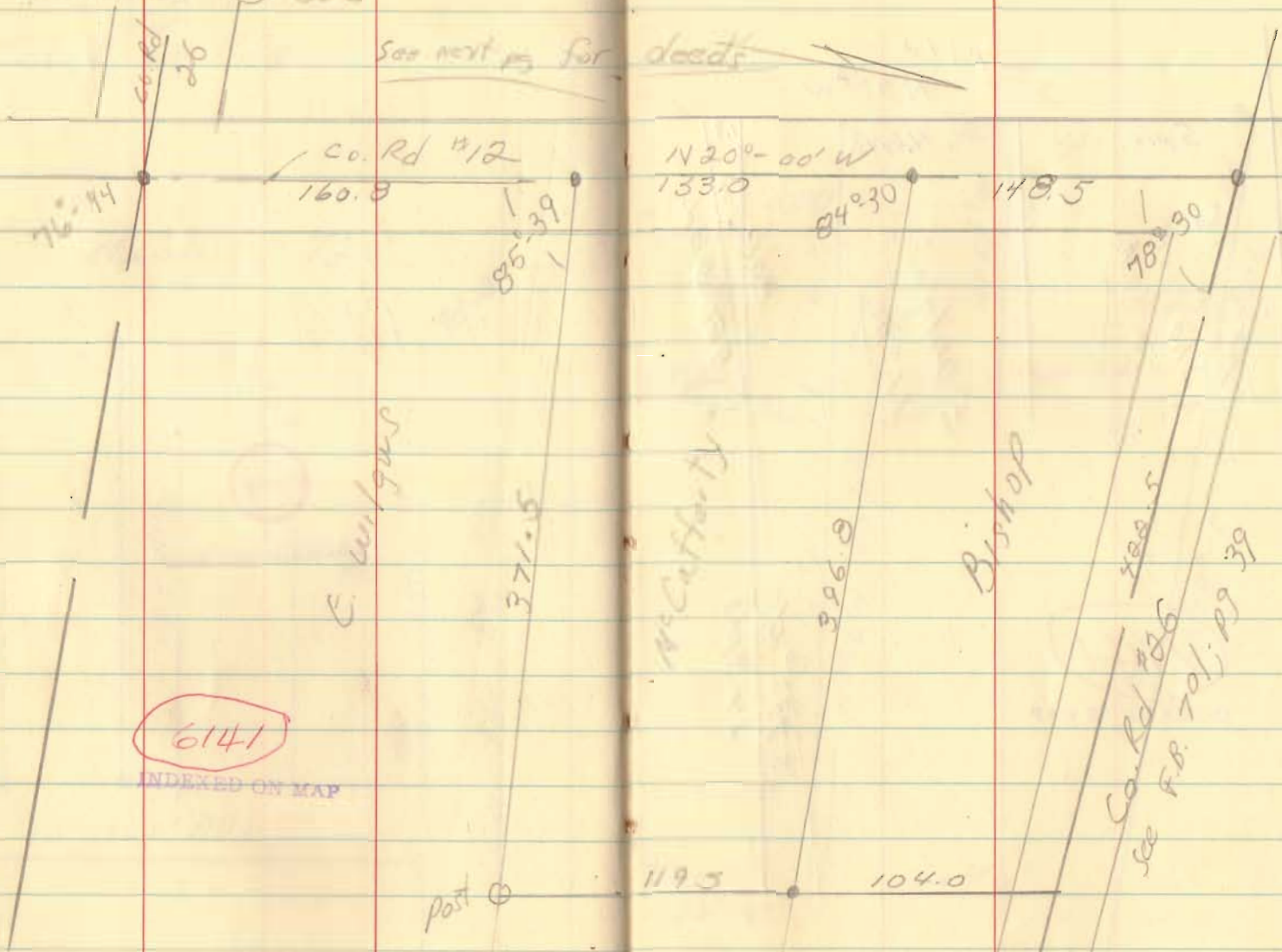
INDEXED ON MAP

McCafferty - Survey
Walnut Grove

Aug 10, 1970

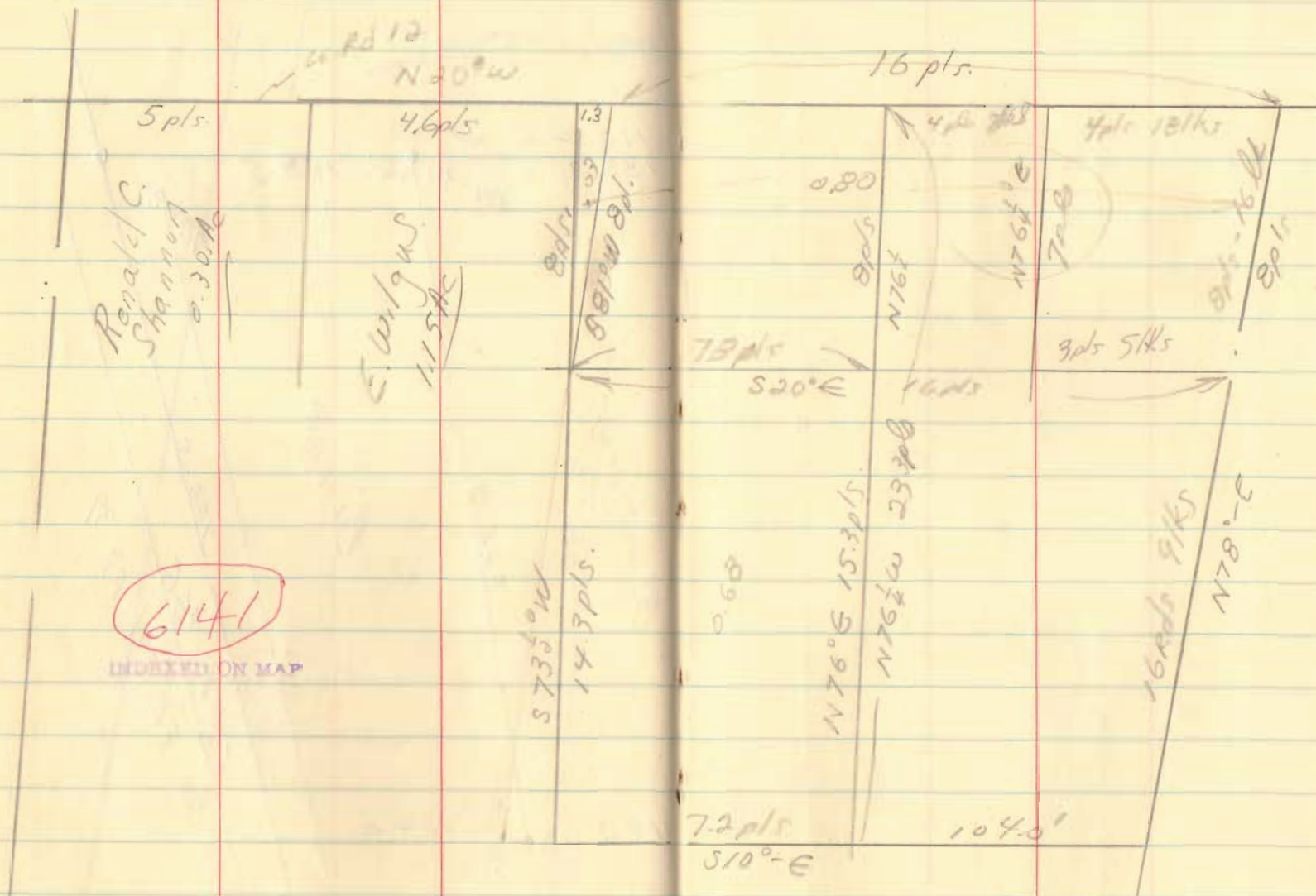
44

See next pg for deeds



Deeds

45

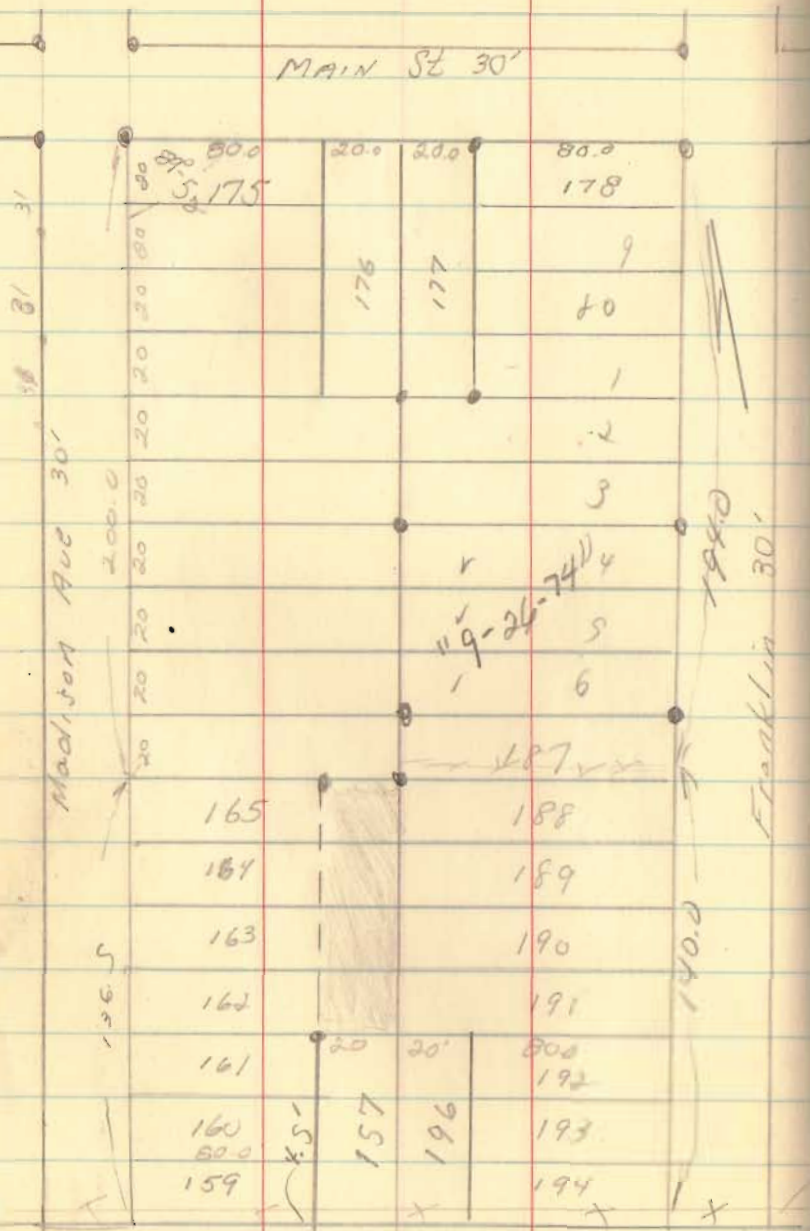


lots in New Midway Place

Aug 17, 1970

47

MAIN St 30'



filed

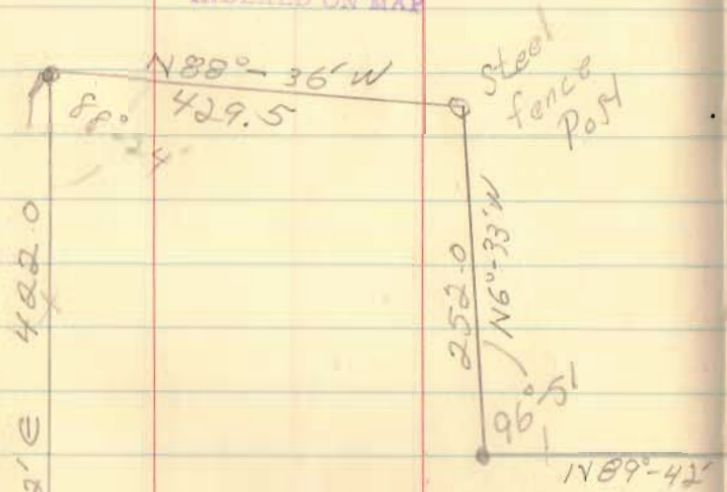
6142

INDEXED ON MAP

St. Highway Fence

Snipes to Capps
 Sec 2; T-1; R-8
 Pleasant Twp

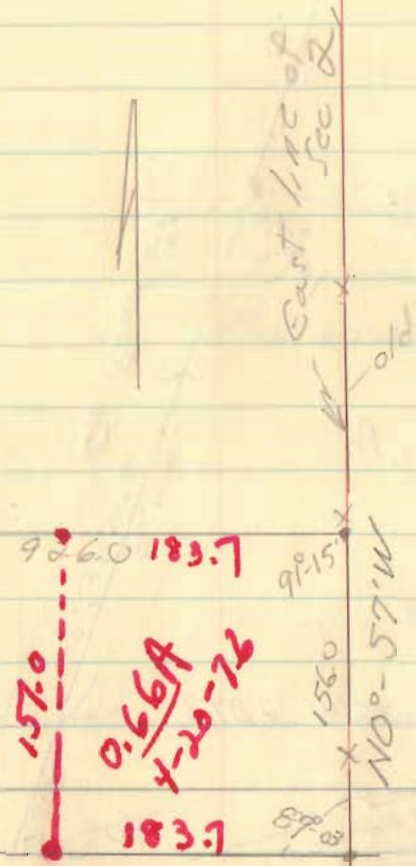
4734
 INDEXED ON MAP



7.66 Ac
 from
 39.14 ac

East → 13850
 Co. Rd 77

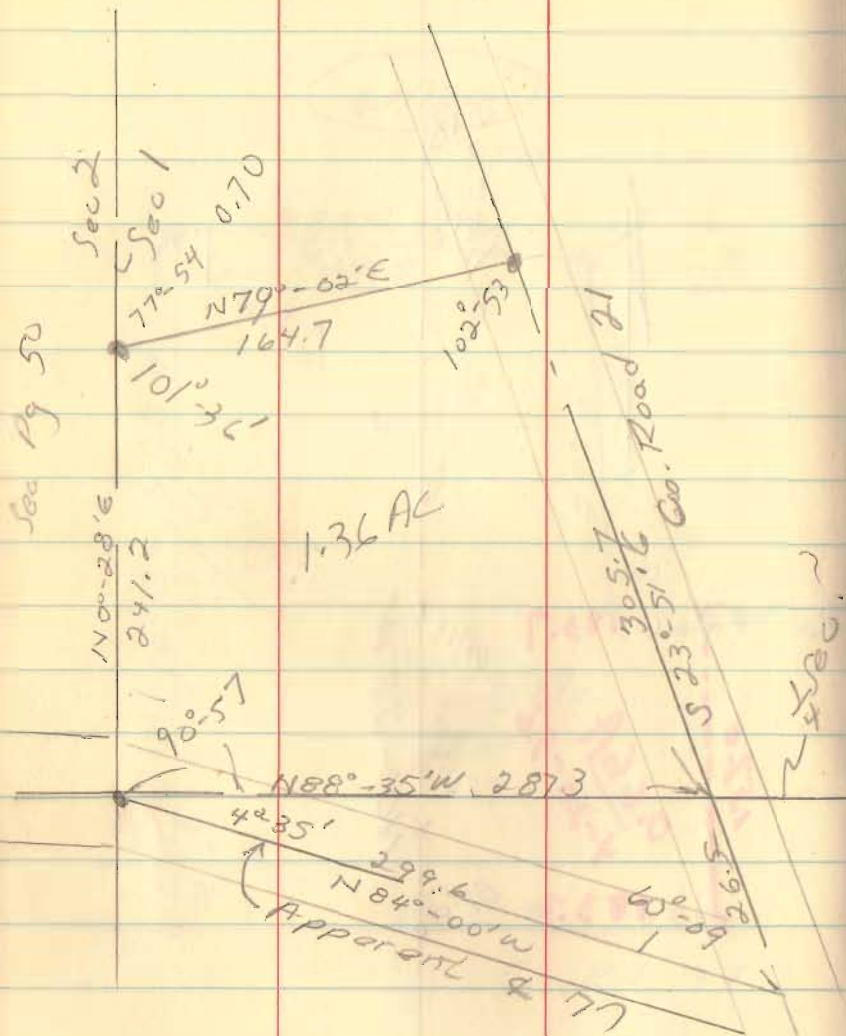
Aug 17, 1910



0.66 A
 493.1
 4-20-76

P. Bixler

Sec 1, T-1, R-8
Pleasant TWP



Nov. 70

49

1/4 sec line,
Co Rd 71 was taken
from Apparent 4's

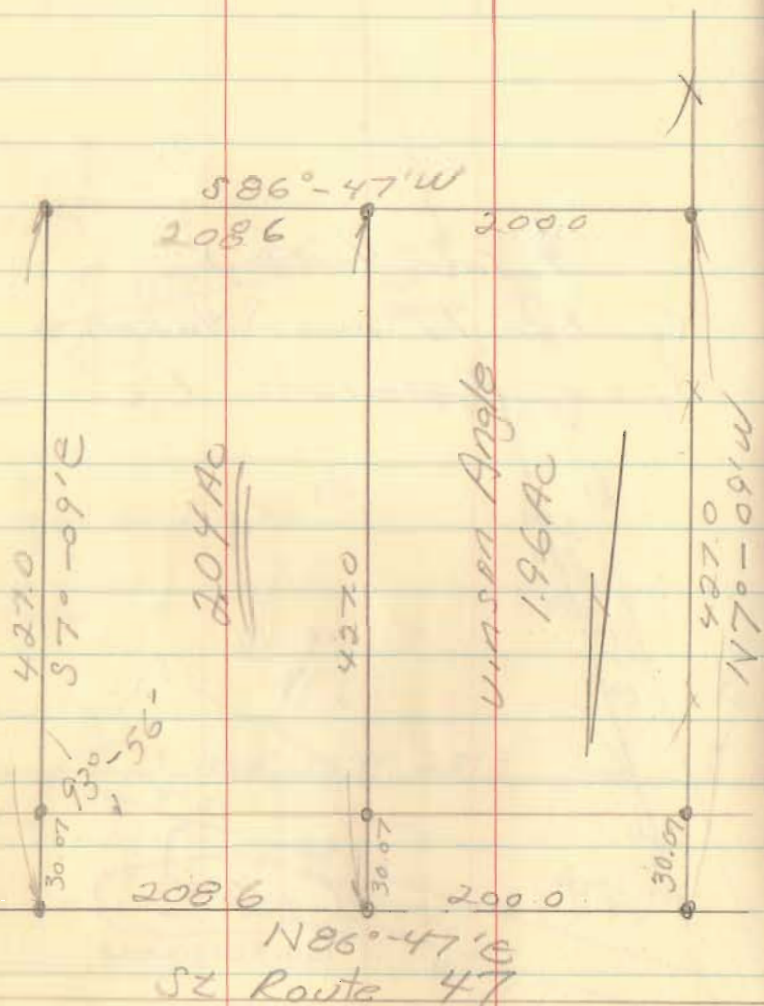
filled

4783
INDEXED ON MAP

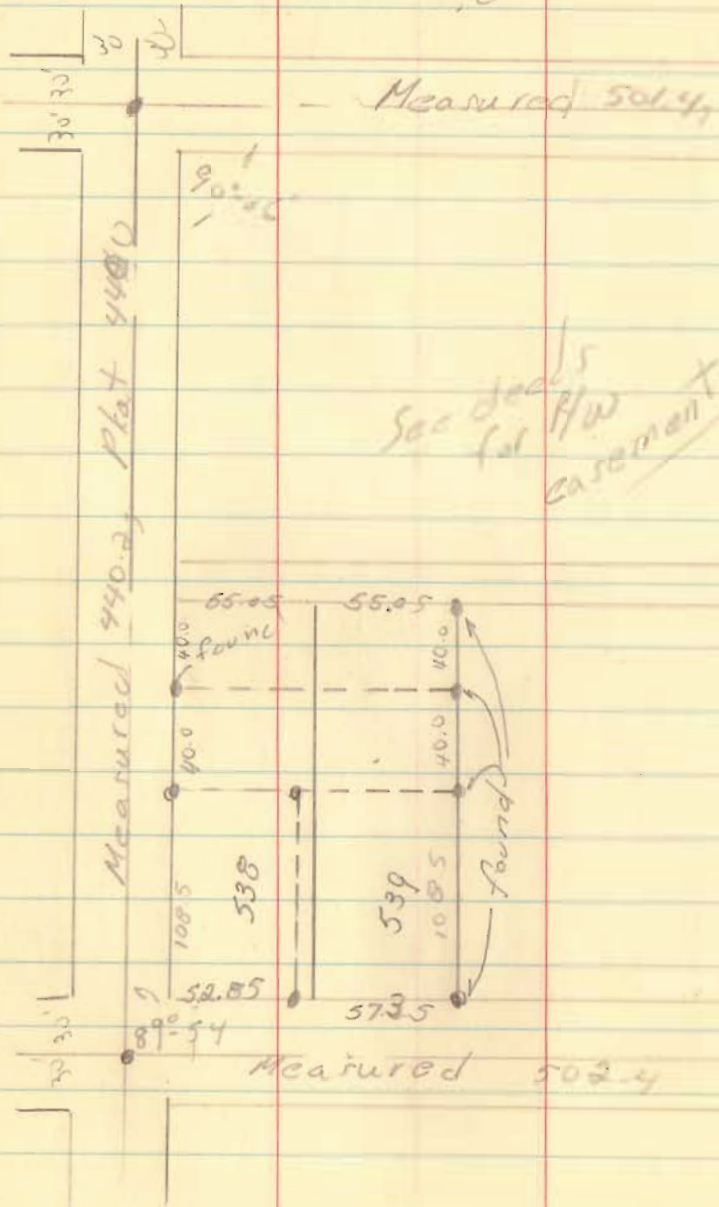
Richard Storm Keep
V.M.S. # 3441
Jefferson Twp

Aug, 70

50



538 & 539
Belb Fontaine, C



Aug 1970

52

plat 501.5

6109

INDEXED ON MAP

filed

plat 501.5

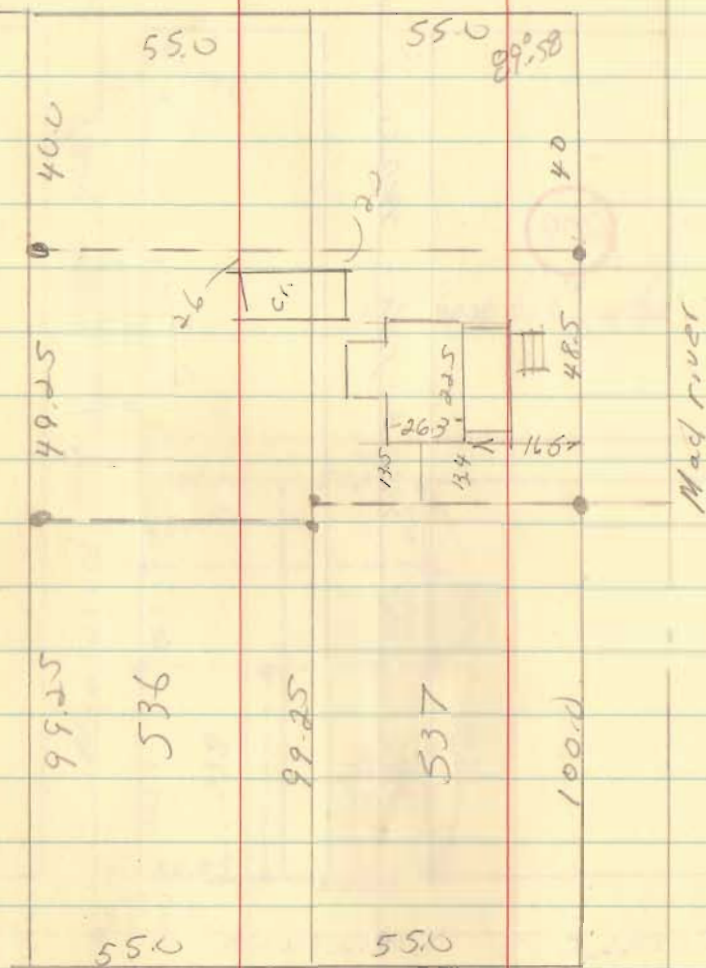
Measured 440.2 plat 440.2

Fenton Survey
Bellfontaines

Oct., 7^o

53

16.5' Alley

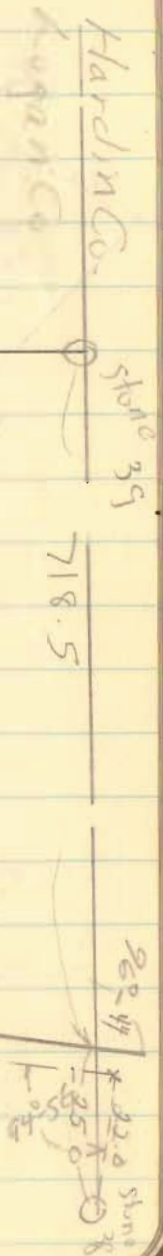
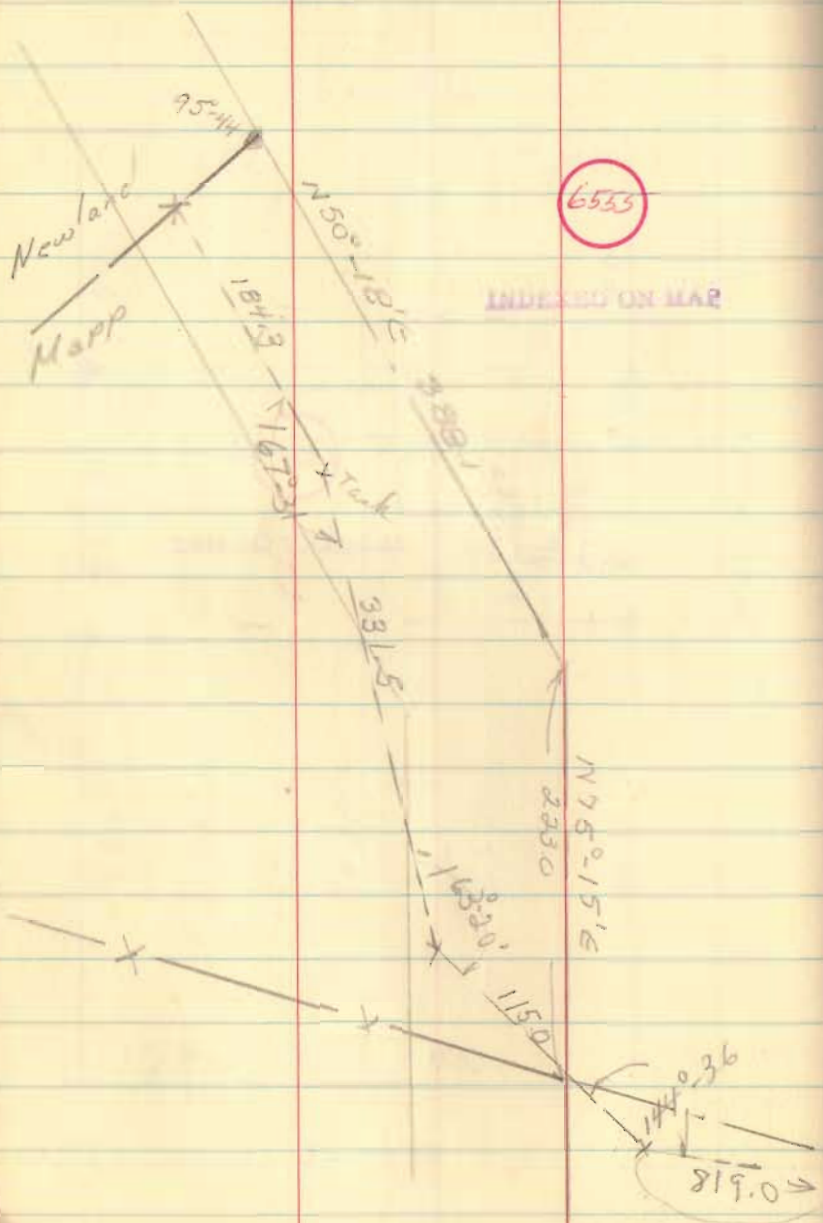


filed

6108

INDEXED ON MAP

Township &
Co Line Location



Stokes Twp.
Richland Twp.

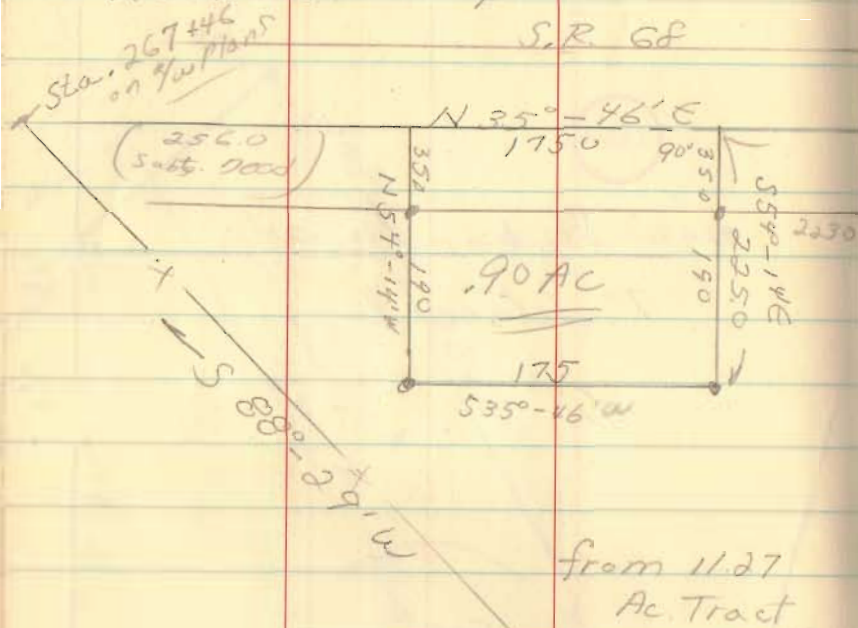
See
Calculations
under
Newland
Dunaway

same pt

Payne Survey
for L. Coons
V.M.S. 9933
Rushcreek Twp.

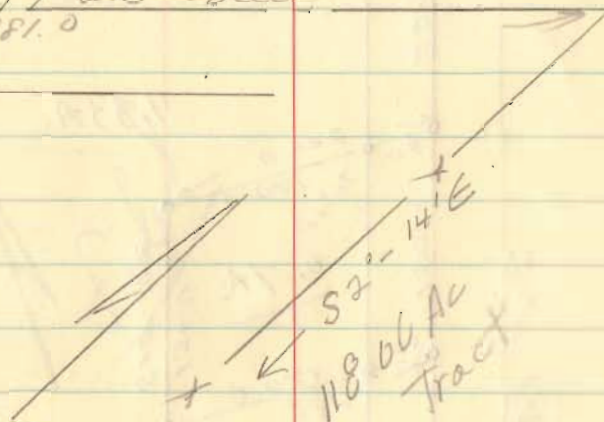
Sept. 19, 1970

55



1412.0 (Deed)
981.0

Oct 14/65
Mon



filed

see Pg 15, pg 7

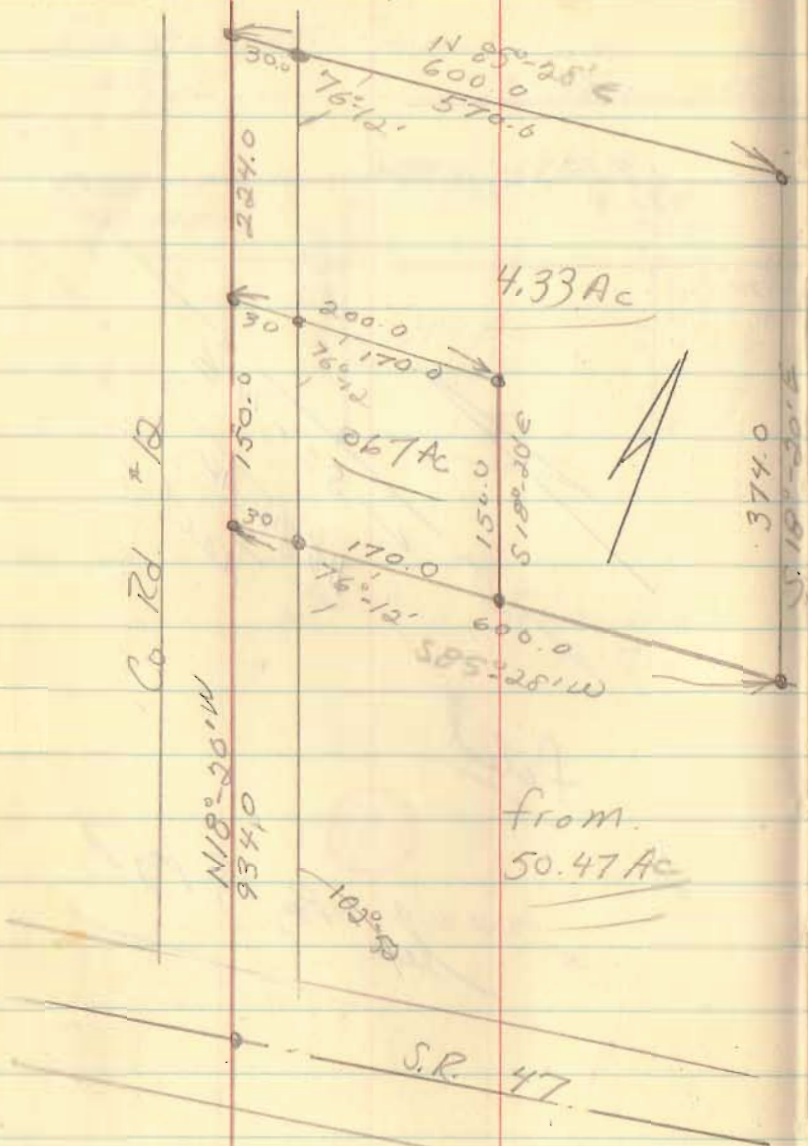
4738

INDEXED ON MAP

Piedmont Survey
for L. COOKS. U.M.S. 3472
Rushcreek Twp.

Sept. 19, 1970

56

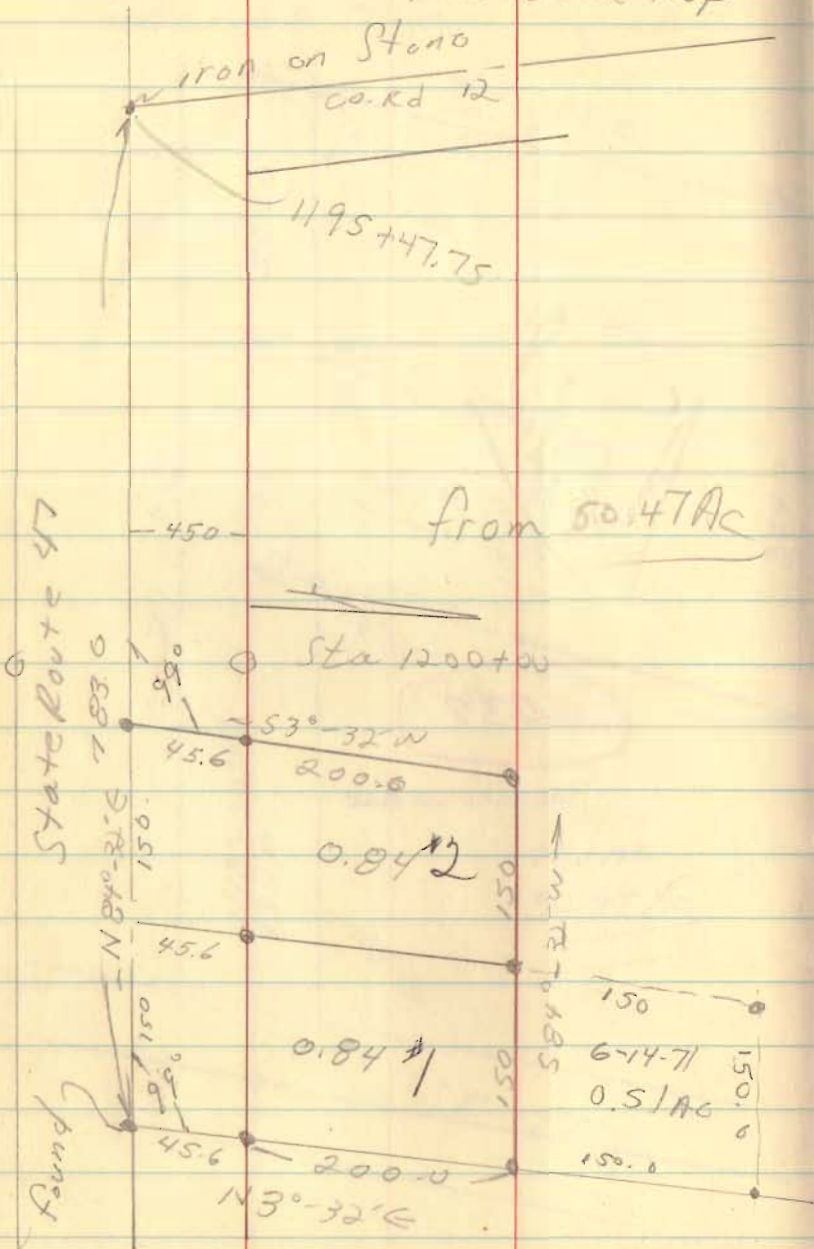


Filed

4737

INDEXED ON MAP

Cook's Survey
 U.M.S. 3472, Rushcreek Twp



Sept., 70

988
 150
 49400
 988
 148200
 150
 74100
 1482
 51
 4354 2223.00
 21780
 4500

filed

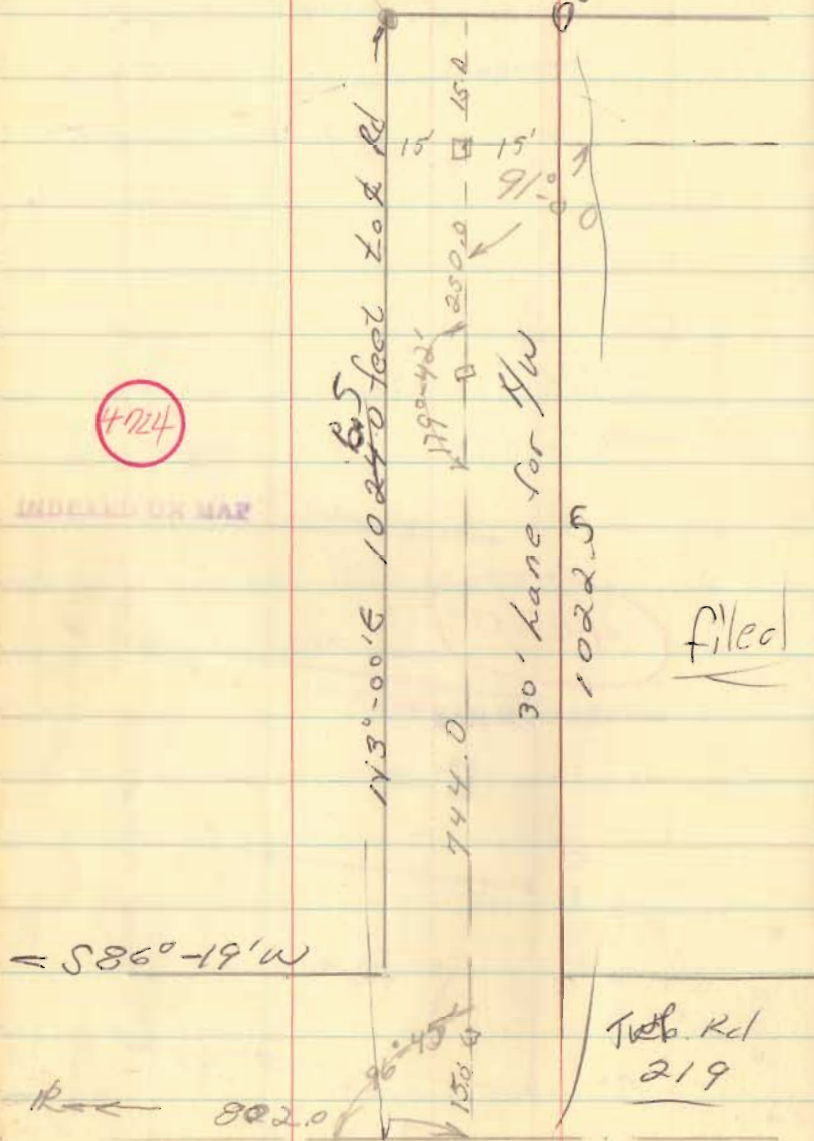
4737

INDEXED ON MAP

Overly Survey
 U.M.S. 3322
 Lake Twp

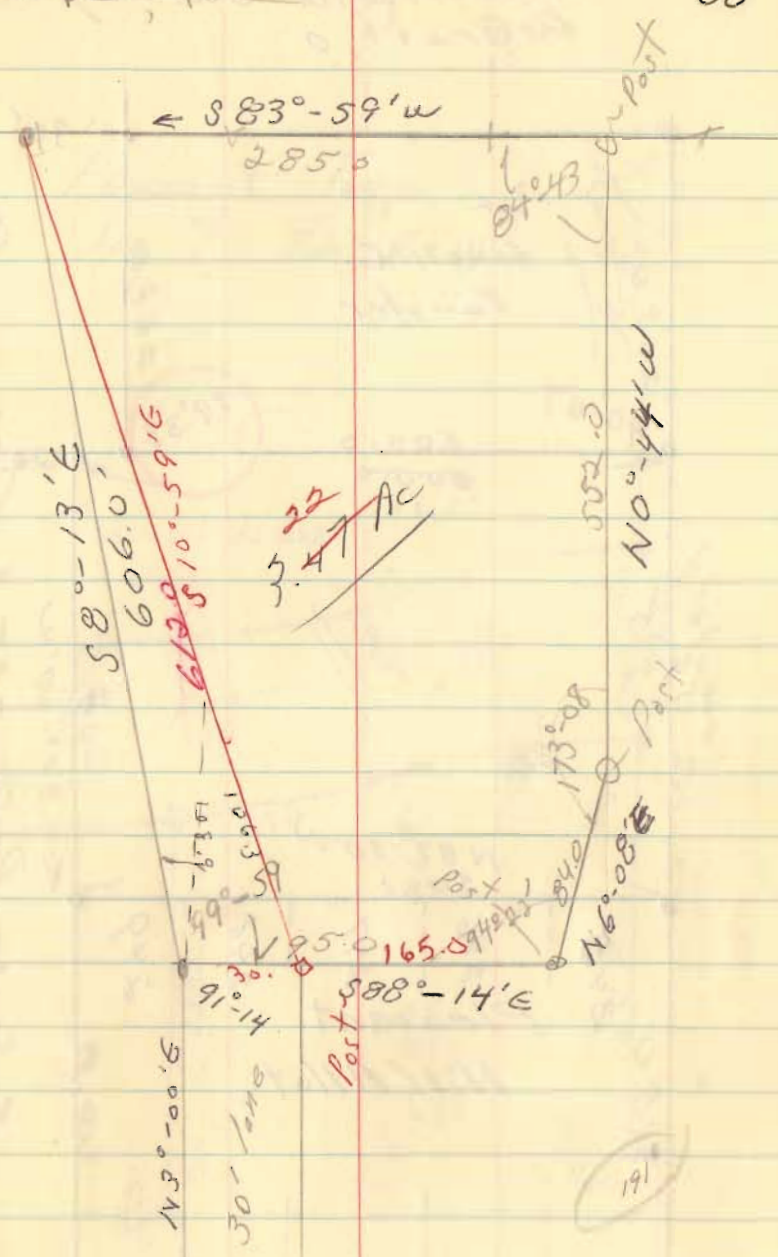
4724

INDEXED ON MAP



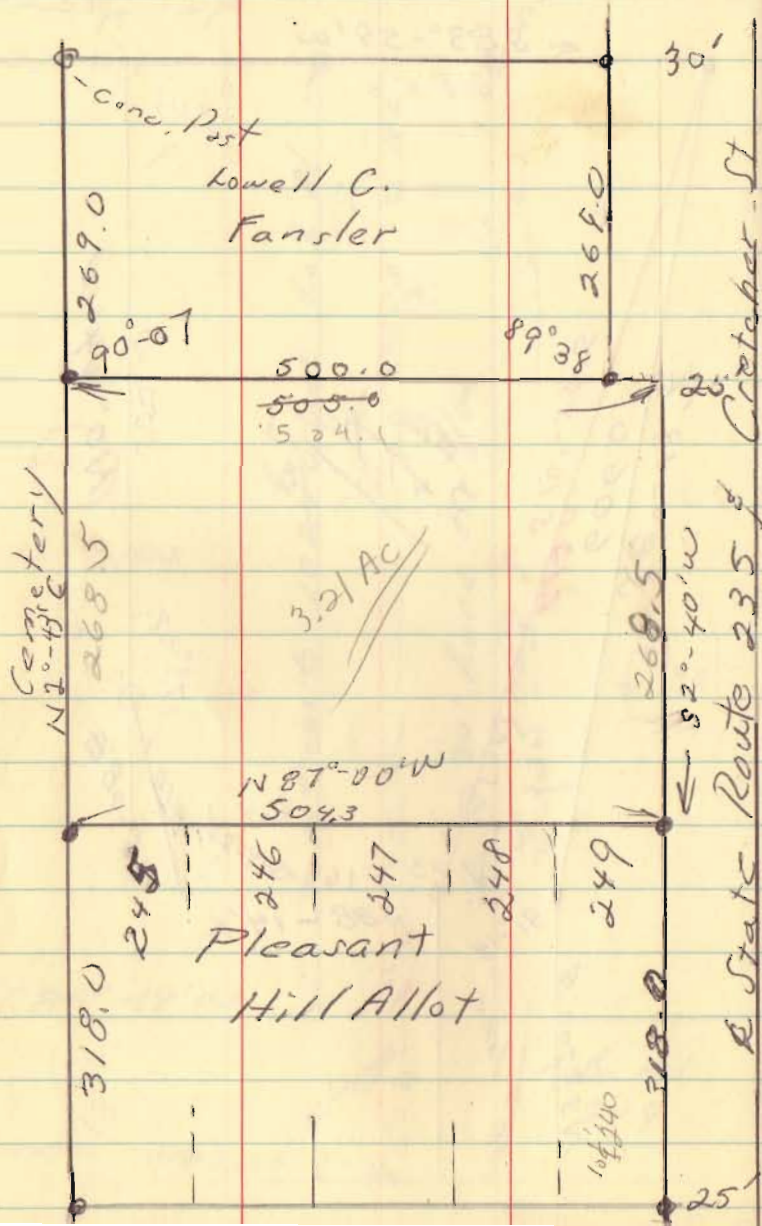
Sept, 1970

58



191

Hirschfeld Survey
DeBraft, O



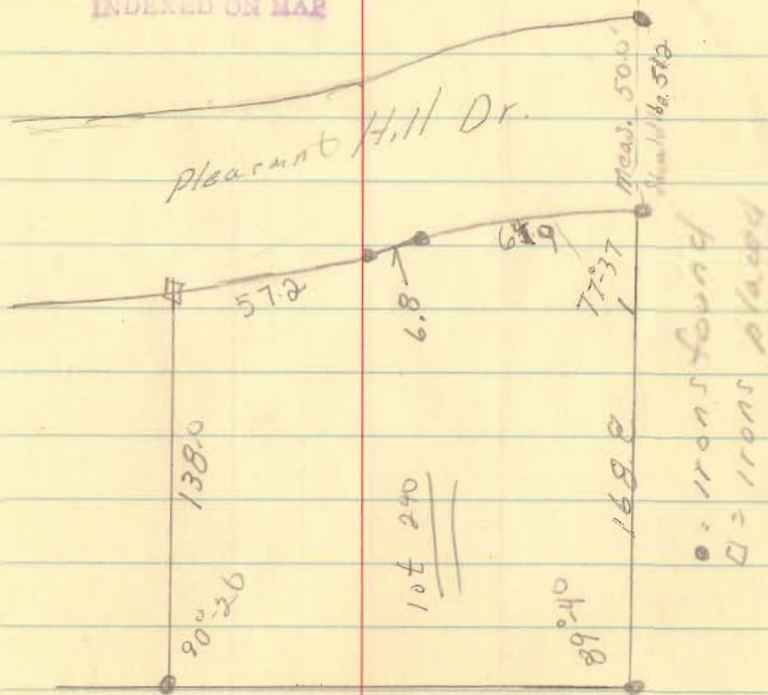
Oct, 10, 70

59

Pleasant Twp
Sec 7, T-2, R-14

4735

INDEXED ON MAP

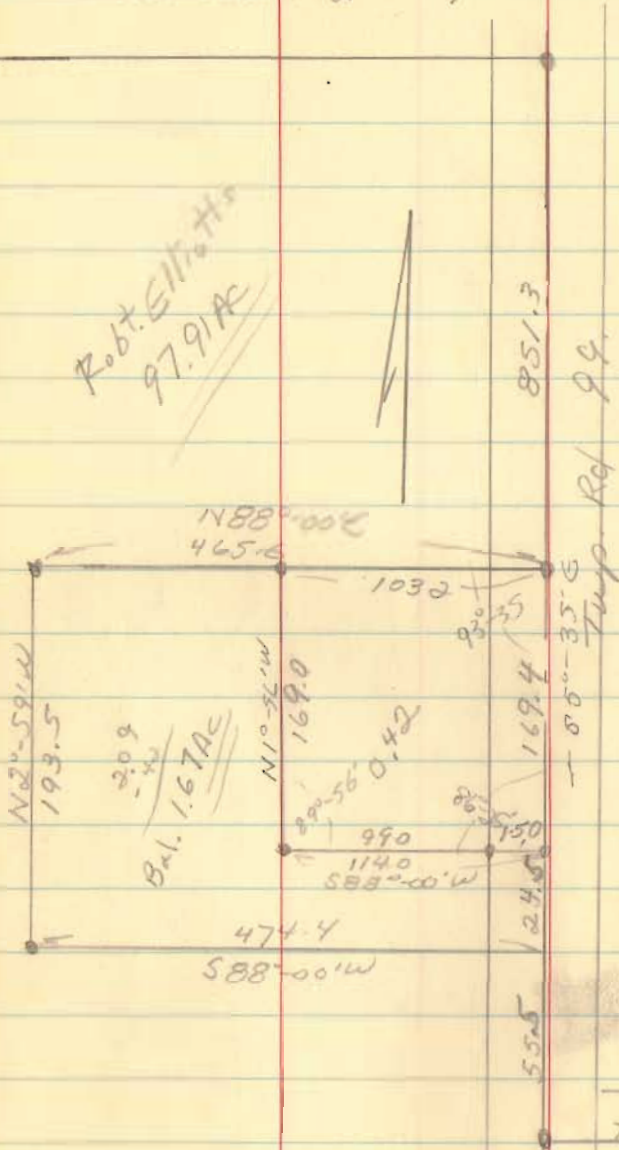


Mrs Helen Hickey
V.M.S. 9902
McArthur Twp.

Oct. 10, 70

61

~~Robt. Smith
97.91 AC~~



4731

INDEXED ON MAP

Filed

Wedding Survey

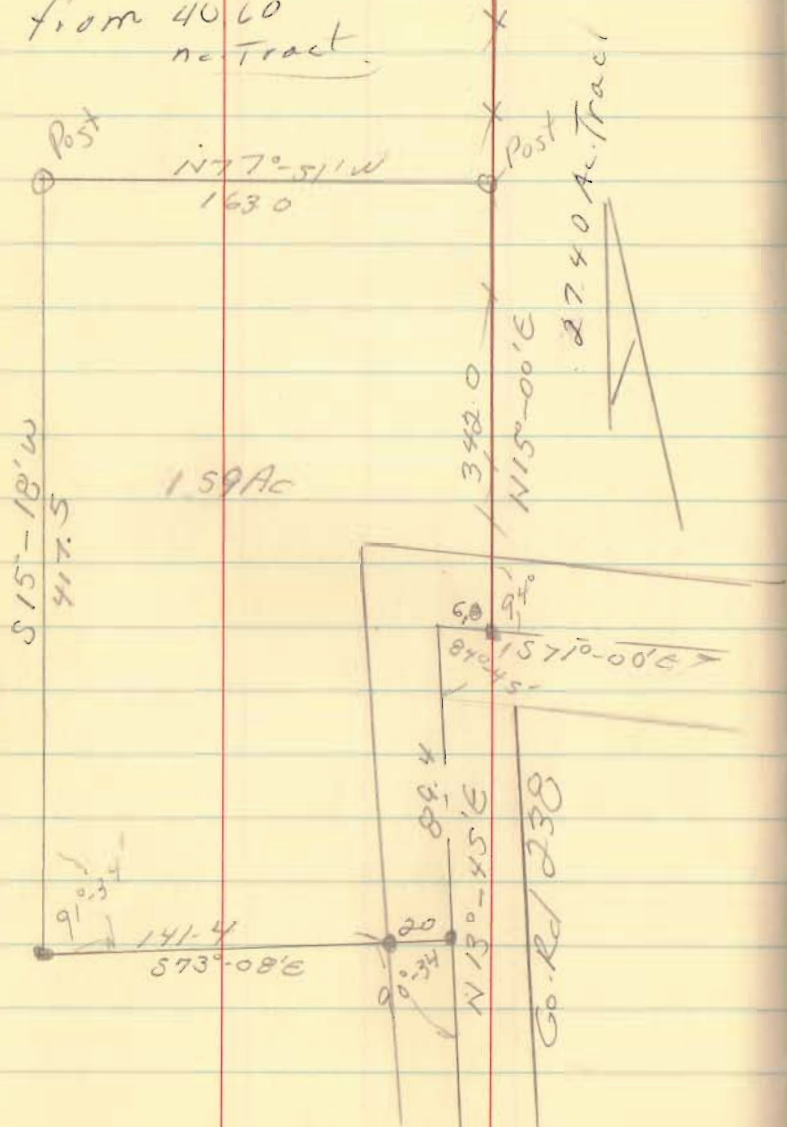
U.M.S. 3239

York Twp, Union Co

Oct. 17, 70

63

from 4060
no Tract.



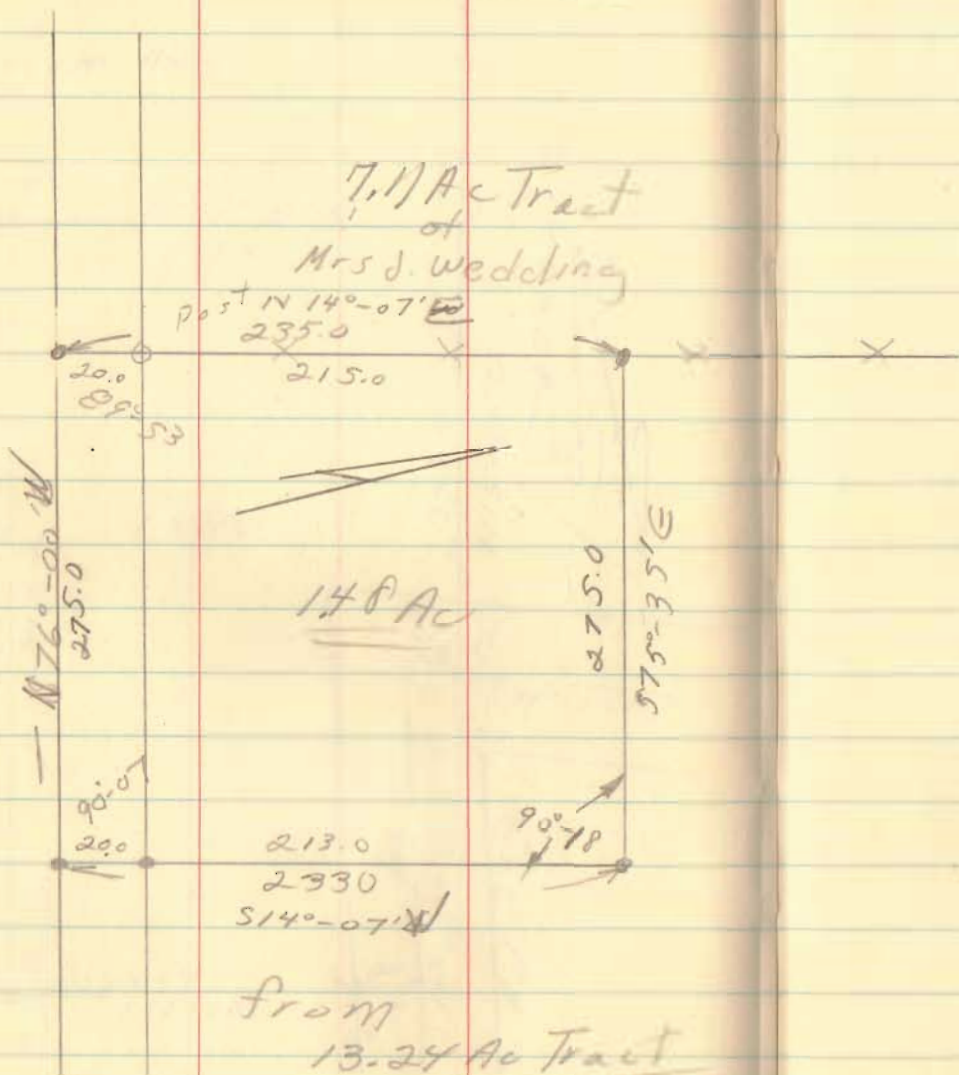
filed

Mrs. Josephine Wedding
V.M.S. 3238
York Twp; Union Co

Oct. 31, 1970

64

Co. Rd 2099

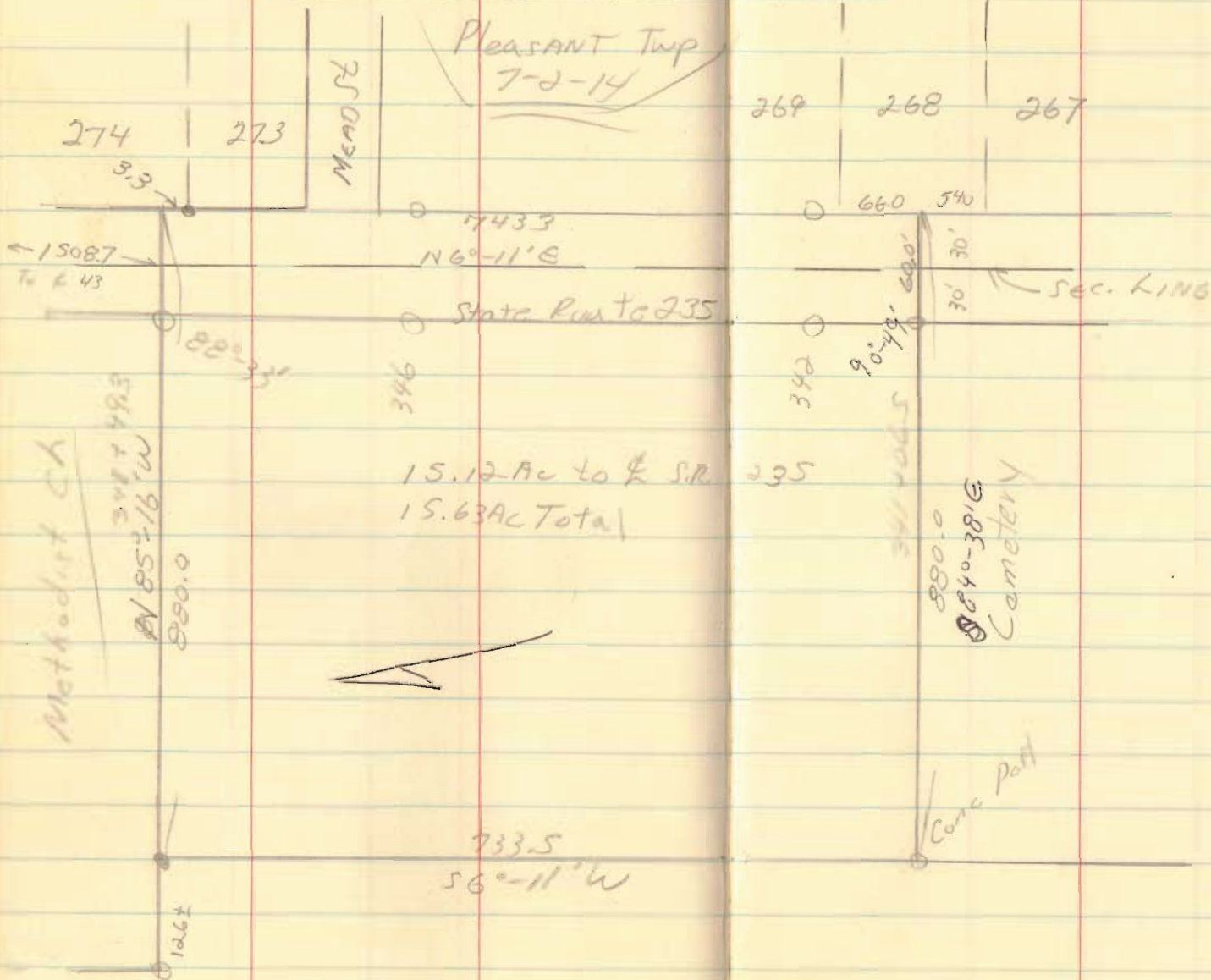


Corp. Line Ext.
Dc Graff for N. Hirschfeld

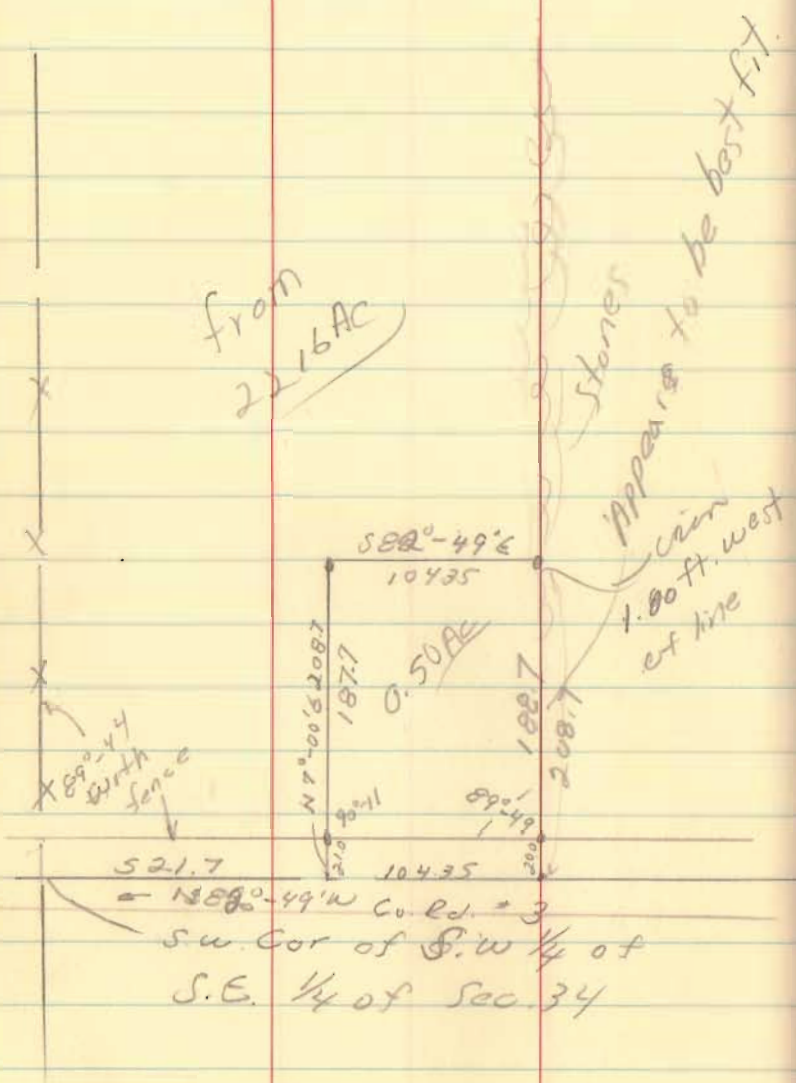
Pleasant Twp
7-2-14

Oct., 70

66



Sidders to Johnson
 Sec. 34, T-3, R-13
 Miami Twp.



filed

4078

INDEXED ON MAP