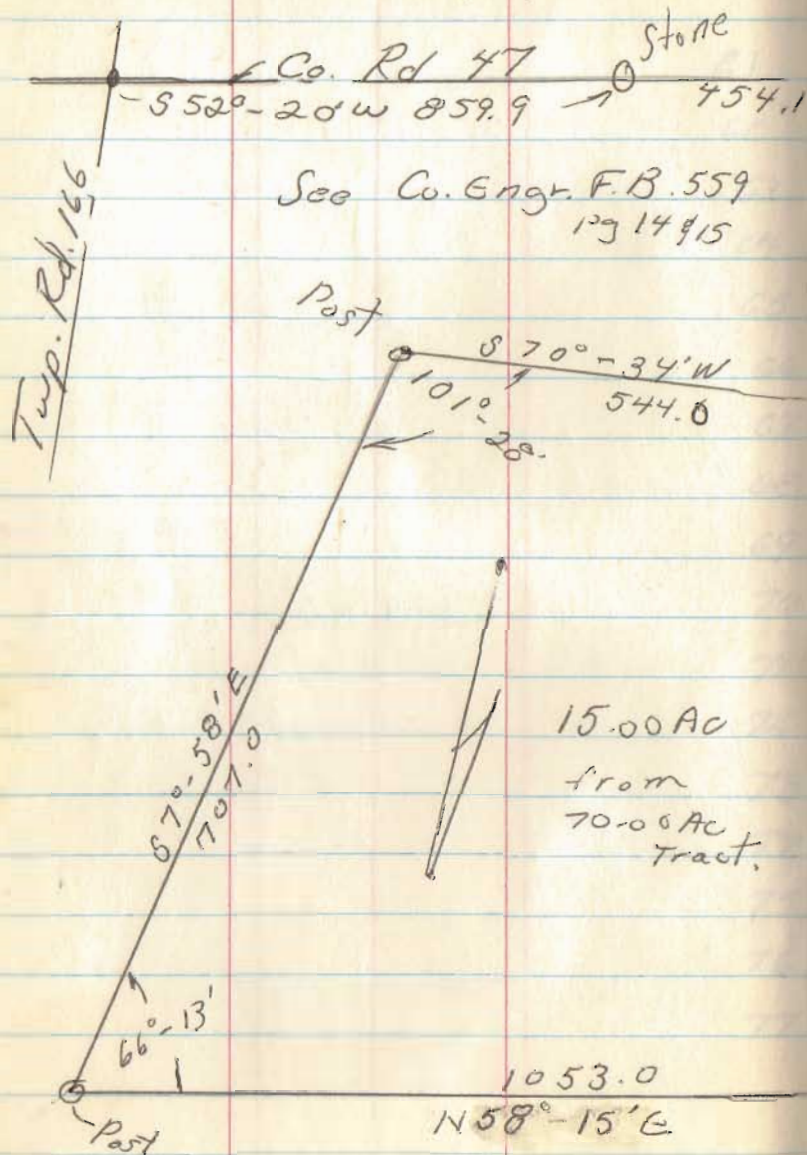
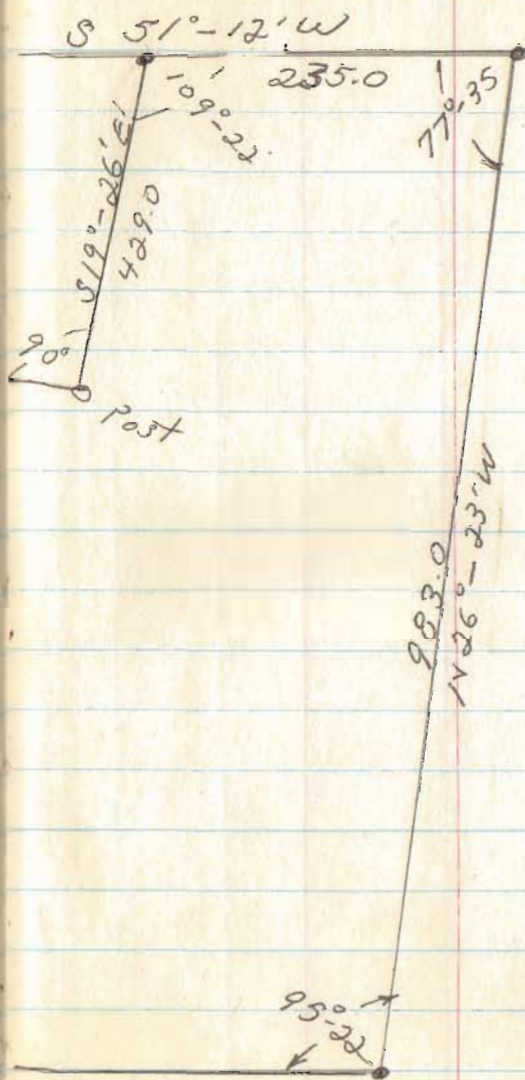


Stuart to Stuart  
 V.M.S. 4493 - 4525  
 Monroe Twp.



June, 1971

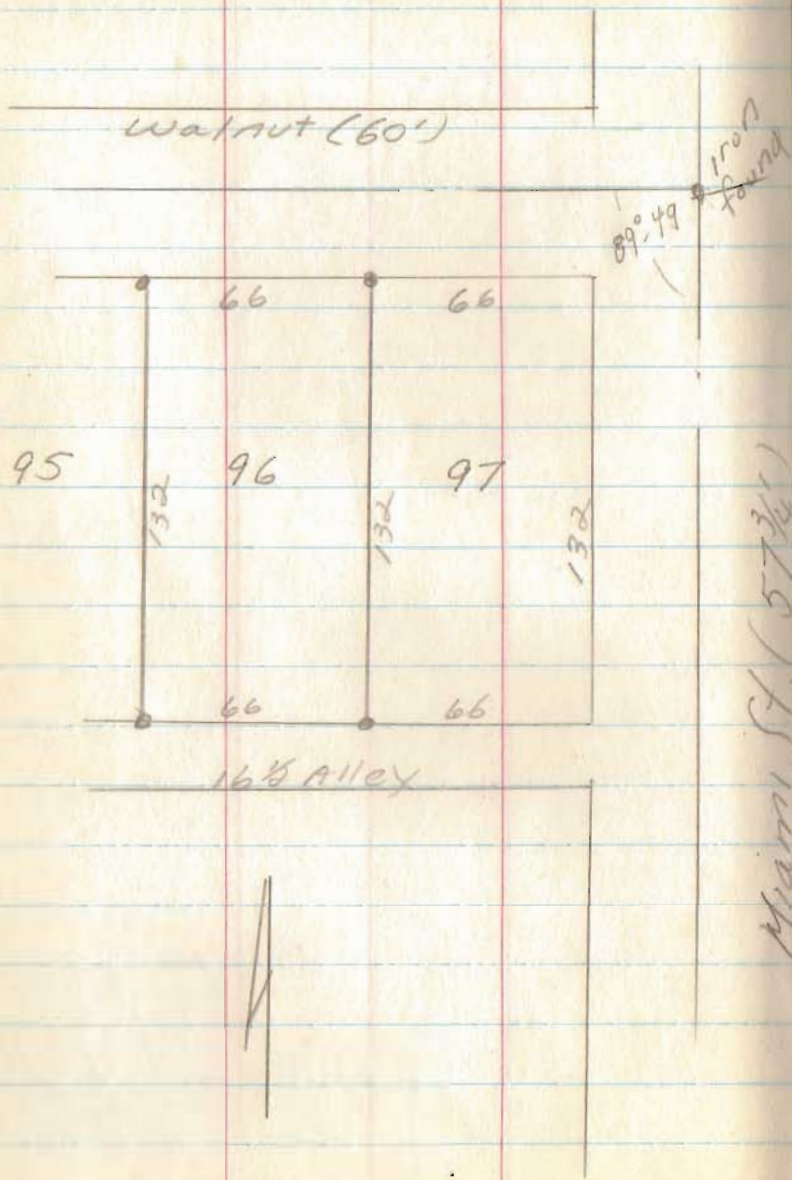


4841

INDEXED ON MAP

filed

Coyer Survey  
Lot 96 - QUINCY



8-2-71

3

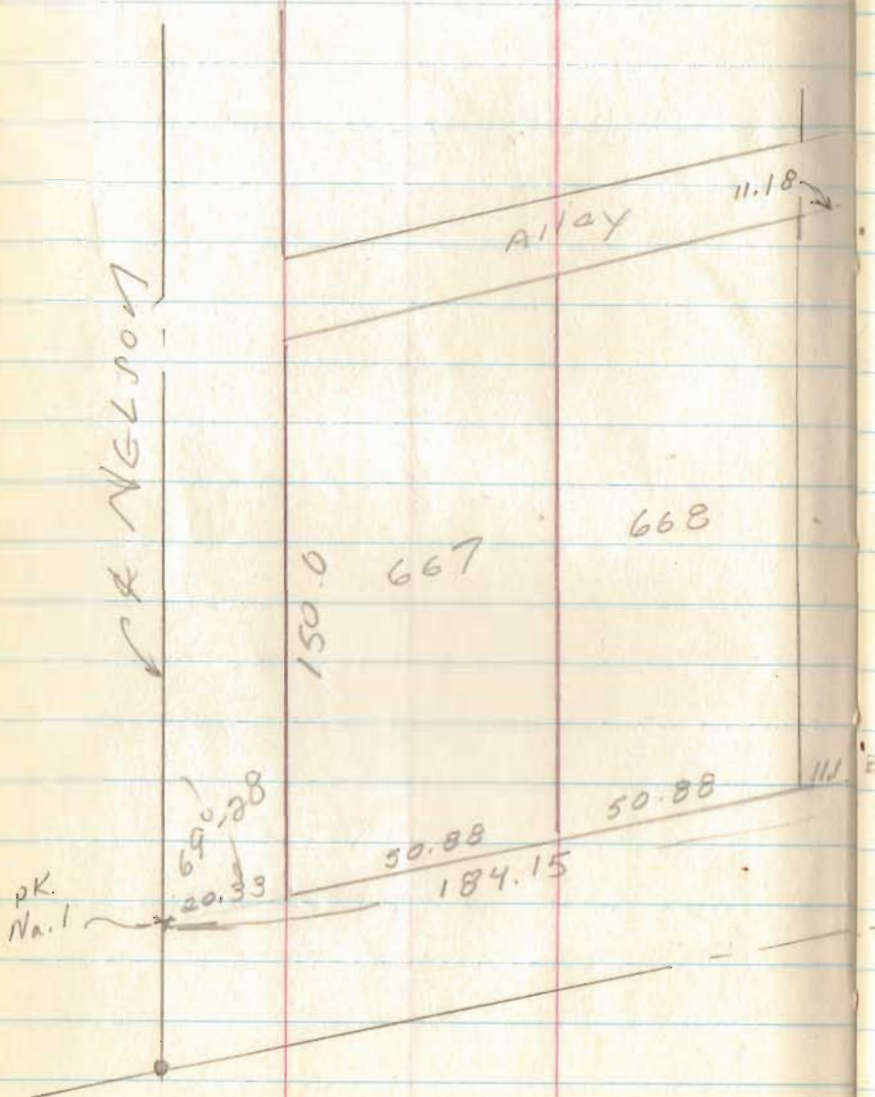
see BK 1, pg 33

filed

6439

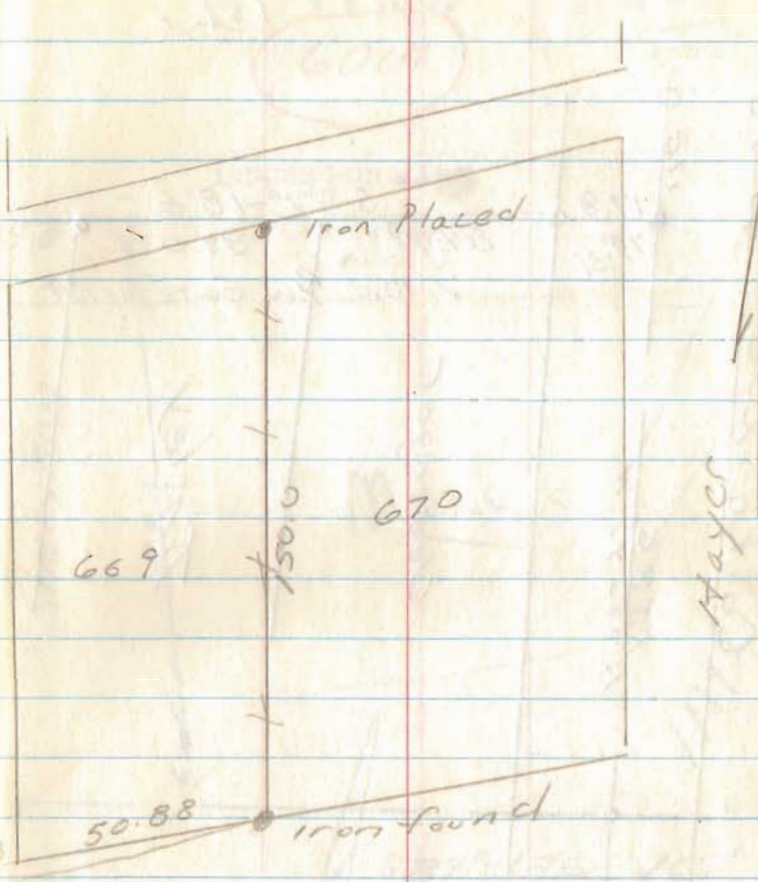
INDEXED ON MAP

Lot 670 (Dairy Queen)  
for Bob Pool



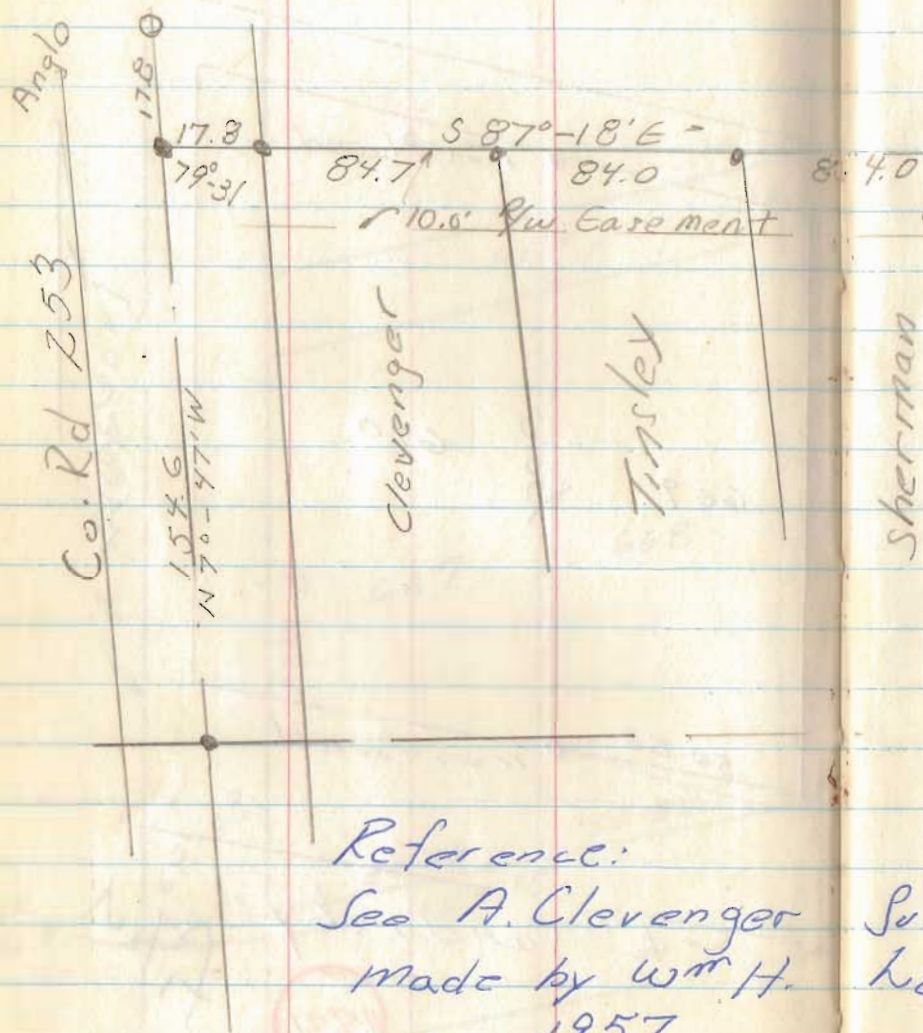
(8-2-71)

5



W & Sandasky  
4831  
filed

Morris  
on Wolfe Is.



Reference:

See A. Clevenger Survey  
made by Wm H.  
1957

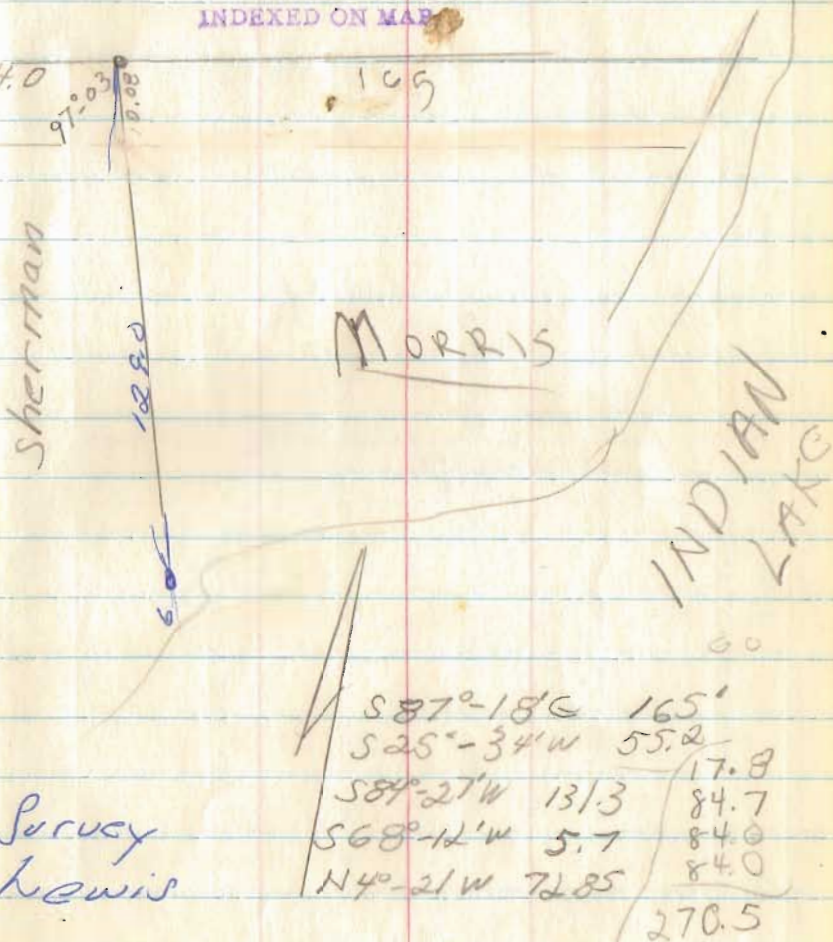
Aug. 16, 71

6

6017

87-18  
25-34  
112-52  
67-08

INDEXED ON MAP



S 87°-18' E 165'  
S 25°-34' W 55.2  
S 84°-27' W 131.3  
S 68°-12' W 5.7  
N 40°-21' W 72.85  
17.8  
84.7  
84.0  
84.0  
270.5

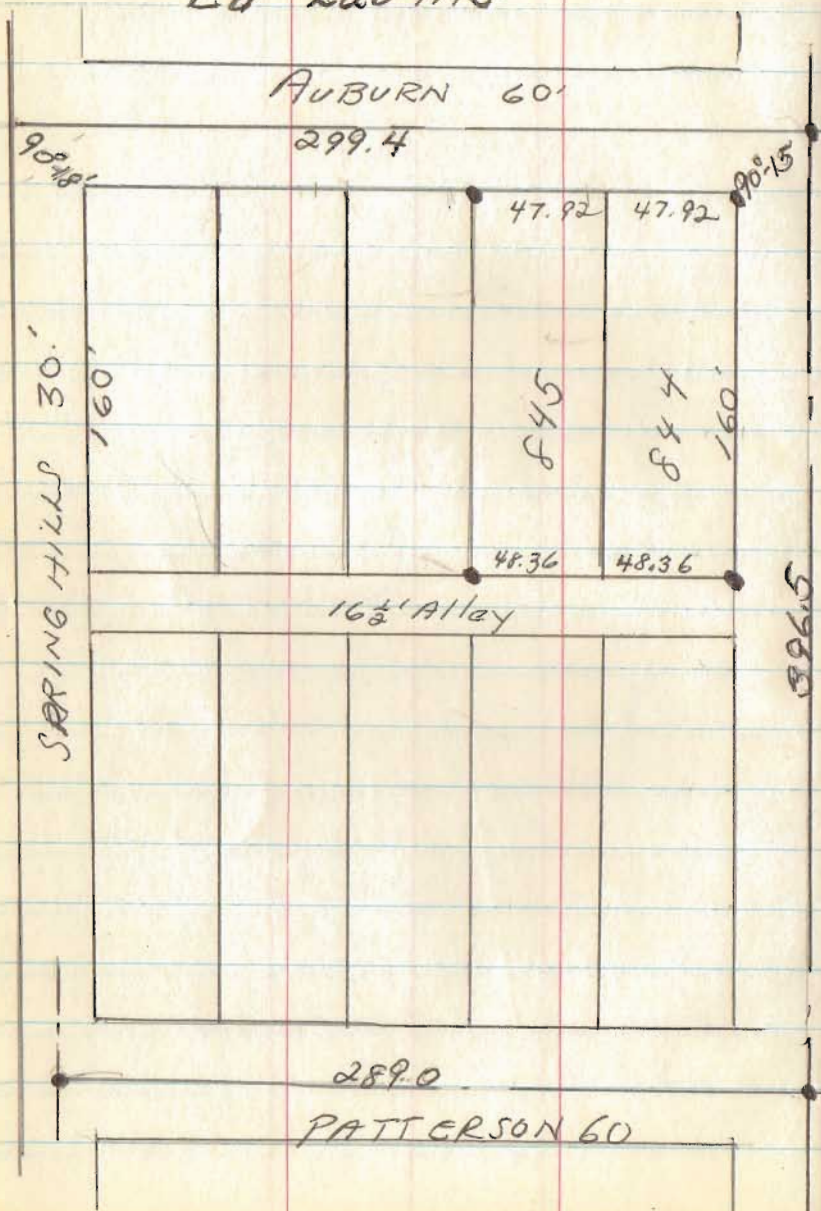
33.3  
131.3

LOTS 844 & 845

for  
Ed Lavitts

7-14-72

8



6559

INDEXED ON MAP