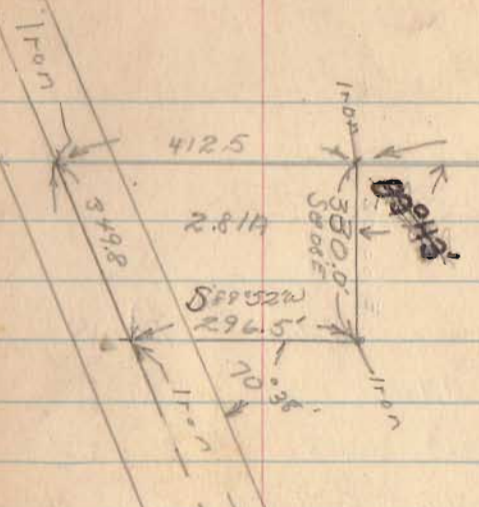


Roy Morris Farm

1



1817.5'
S 89° 35' W

104.66A

1652.2'
200.0'
519.40'

682

INDEXED ON MAP
412.5
341.9
91.1

← 109° 18' ←

Sec. Cor Stone



Section Corner

1753.6'
NO 18' W

← 89° 54' ←

N 89° 48' E
2157.1'
154.1
1073

179° 35'

FAIR GROUNDS

3 1/4" Flag Screw

B.M.s

1233.38	X nailed	in tree	in fair-ground
1238.15	Top	Rock	
1238.97	Top	Stake	A-1.
41.54	"	"	A-2
40.86	"	"	A-3
42.99	"	"	A-4
44.21	"	"	A-5
42.55	"	"	A-6
41.42	"	"	A-7
40.76	"	"	A-8
39.27	"	"	A-9
37.02	"	"	A-10
37.49	"	"	A-11
36.77	"	"	A-12
	"	"	A-13
	"	"	A-14
	"	"	A-15
	"	"	A-15

682

INDEXED ON MAP

401240.59 Top Fence Post

Top I-9 = 25.71

	C Roach	Bm rd	Ditch	Boundary	1	2	3
West Fence						41.7	
A	39.3	39.0	38.0	39.3	38.7 41.7	^a 41.2	
B	42.7	42.5	41.7	43.6	42.1	43.8	
C	46.0	45.6	44.3	44.8	44.8 45.1	45.6	
D	43.1	47.7	42.0	42.4	43.3 40.9	47.4	
E	40.6	40.2	39.6	40.6	39.3 39.4	43.2	
F	37.4	37.0	35.7	36.4	37.0 34.0	43.2	
G	36.7	36.3		34.0	33.7 31.5	32.3	
H	37.4	37.1	36.0	35.9	31.5	28.7	
I	40.0	39.7	38.7	39.5	37.0	31.1	
East Fence					38.1	31.9	

INDEXED ON MAP

682

West
Fence

	3	4	5	6	7	8
A	40.3	42.6	43.6	42.2	40.9	40.1
B	41.9	42.2	43.1	45.4	43.6	42.0
C	43.7	42.7	43.7	47.1	45.6	42.7
D	47.7	46.3	45.6	44.7	42.5	42.0
E	46.6	51.8	53.0	47.3	44.7	42.4
F	46.6	49.5	51.6	49.8	46.8	43.4
G	35.8	43.3	46.6	46.9	43.6	40.7
H	28.8	30.3	34.3	41.7	39.2	38.2
I	29.6	26.1	26.1	28.2	29.3	26.7
East Fence	29.8	27.0	24.6	24.5	23.4	22.0

682

INDEXED ON MAP

47.6

53.6

40.7

	9	10	11	12	13	14
West Fence	39.0	35.4		34.6	36.5	41.7
A	38.6	36.6	37.2	35.2	33.1	41.5
B	39.6	40.0	38.9	36.1	30.7	32.8
C	41.5	39.2	40.3 42.1	37.9	30.4	33.6
D	44.9	47.0	41.2 44.6	38.1	36.6	37.0
E	43.5	43.2	42.8 41.9	39.9	39.0	39.0
F	40.9	43.9	43.7 43.9	39.1	36.6	36.7
G	68.2 38.1		42.1	41.7	39.6	38.1
H INDEXED ON MAP	34.0		37.1			
I	25.2		26.8			
East Fence	21.7		20.8		35.4	34.3

west
Fence

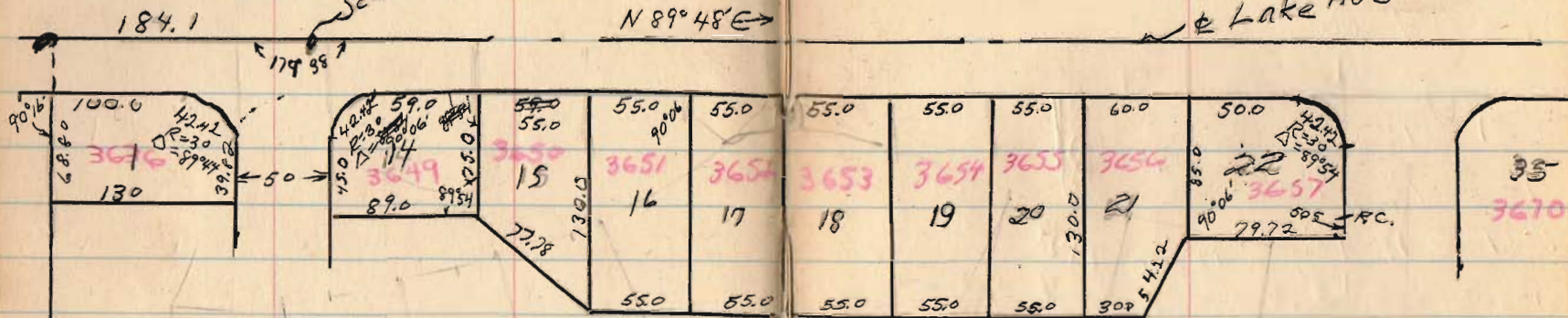
	15	16	17	18	19
west Fence	39.9	38.9	38.2	37.2	
A	40.0	38.0	36.8	37.3	
B	38.1	33.4	34.3	36.7	
C	33.3	32.9	35.0	35.0	
D	33.1	30.4	32.8	34.4	
E	37.3	33.4	32.7	35.8	
F	34.3	35.6	34.8	35.8	35.2
G	35.8	36.4	36.6	35.3	33.3
H					
I					
Fence	34.4	33.6	33.8	33.0	

682

INDEXED ON MAP

lots 14 thru 22

~~3 thru 10~~
Sec Cor. NE 27, NW. 33



Lake HLS

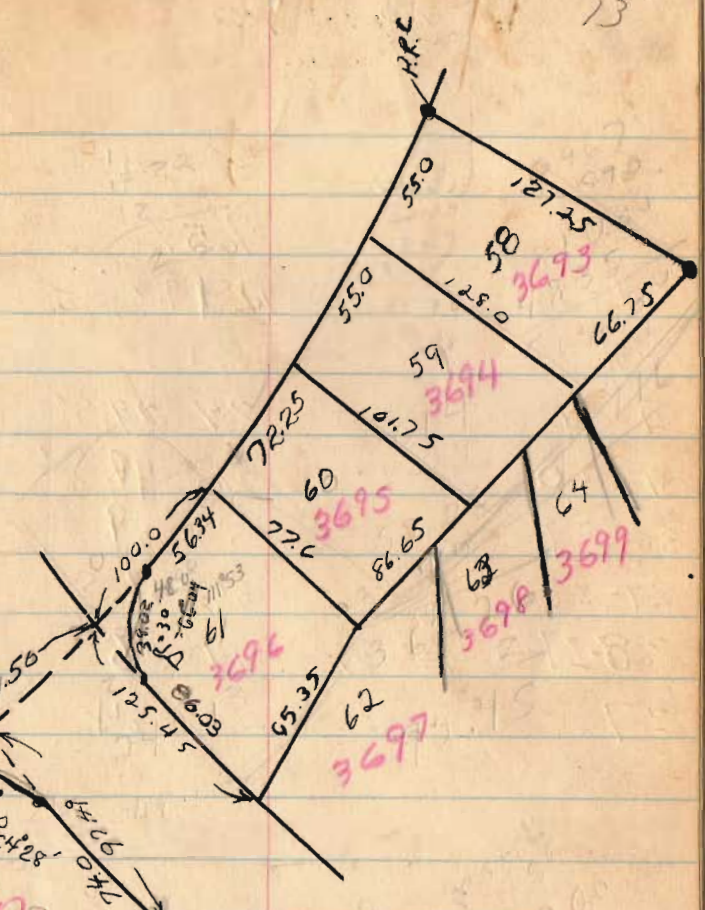
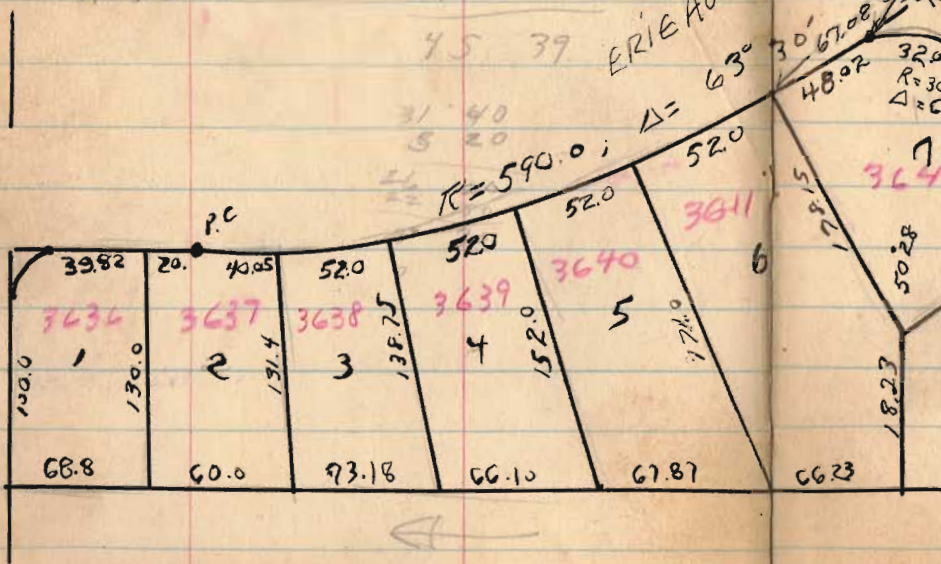
July 1951 '12

6441

INDEXED ON MAP

Lots 1 thru 7
61 thru 58

3-4	4° 28'	3.53
4-5	7° 00'	5.08
5-6	9° 31'	5.03
6-7	12° 02.5'	5.59
7-	15° 12'	5.02
7-61	17° 48.5'	9.2
61-60	22° 49.5'	0.3
60-59	26° 24'	0.5
59-58	28° 04'	5.3
58-57	31° 45.5'	2.4
		5.8
		10
		3.9
		3.5
		3.7
		10
		0.2
		4.5
		3.9

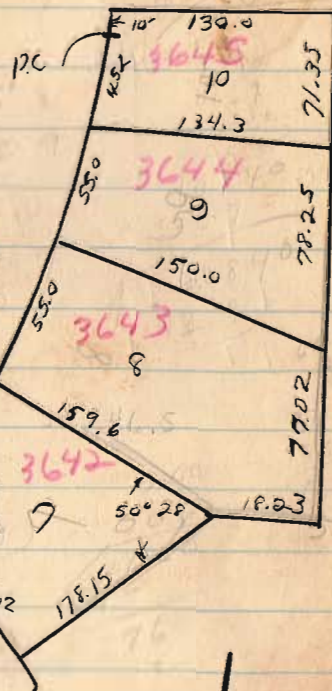
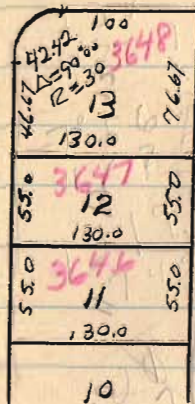
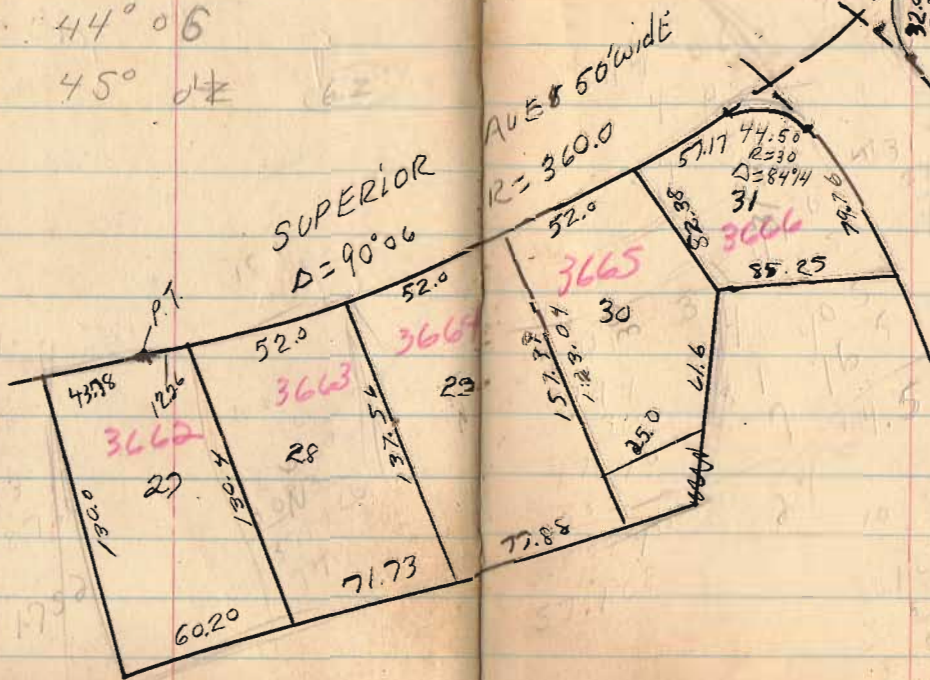


(64.4)

INDEXED ON MAP

Lots 10 to 7 #7
274.31

9-10	304	3° 34'	
8-9		7° 57'	
7-8		12° 19.8'	
7		× 18° 14.5'	(74.00)
7-31		24 29.5'	(27° 08') 57.17
31-30	35° 48'	31° 49.5'	
30-29	39° 56.5'	35° 48'	
29-28	44° 05'	39° 57.5'	
28-27	45° 02'	44° 06'	
27	—	45° 04'	



6444

INDEXED ON MAP

Lots 53 thru 58

15

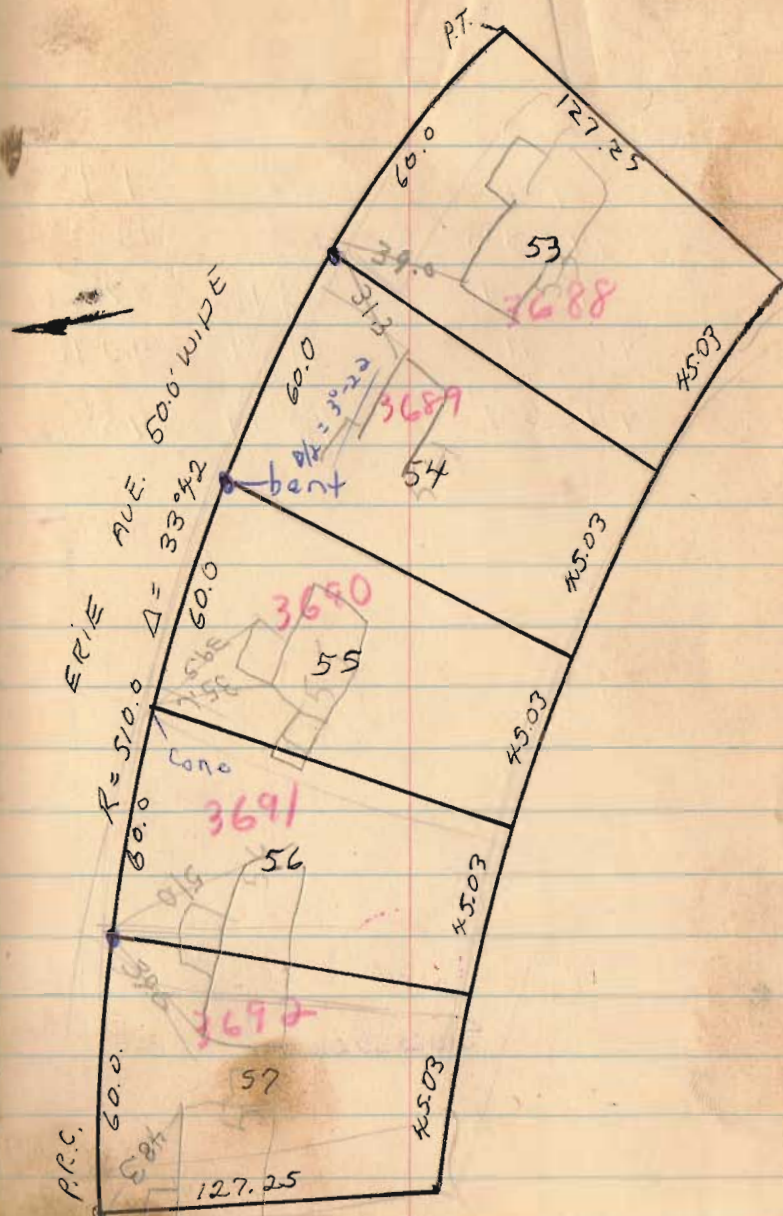
51-52 31° 42'
52-53 25° 20'
54-55 26° 57'
55-56 21° 35'
56-57 19° 12'
58 17° 51'
3 3

144.8 3°-22
3
1229.6 10° 06
3 22
12.8
6°-44

31.42
14.91
16.5
2
33.42

6441

INDEXED ON MAP



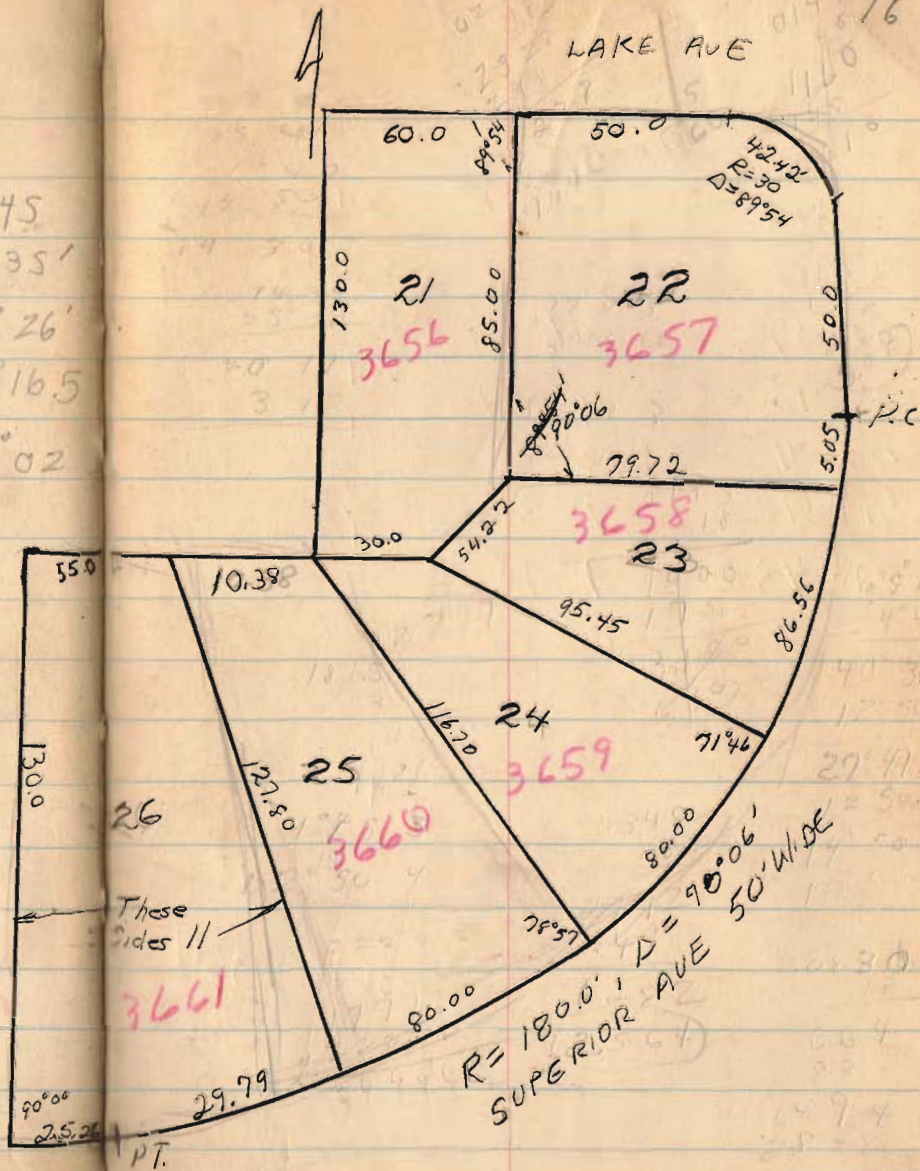
Lot 22 thru 26

22-23	0	2°00	1°45
22-23	1°40	17°50	14°35'
23-24	14°30	27°41	27°26'
24-25	27°21	40°31	40°16.5
25-26	40°11	45°17	45°02
26-27	44°57		

27

6441

INDEXED ON MAP



35-36

45° 03

36-37

38° 45 0.18

37-38

32° 27 6.17

38-39

26° 09 6.18

39-40

19° 51 6.18

40-41

13° 33 6.18

41-42

7° 30 6.03

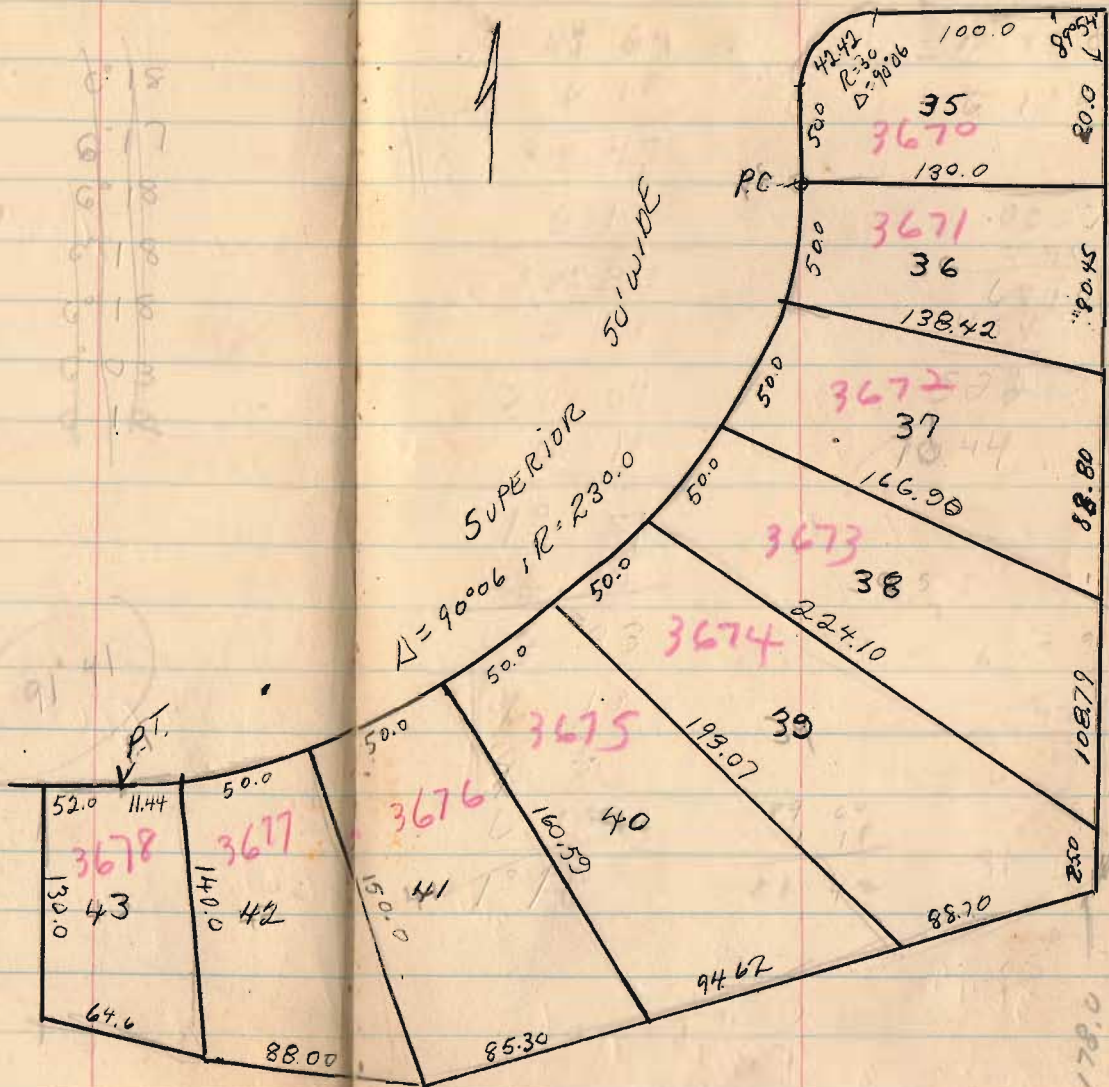
42-43

0° 18 6.18

0.

6441

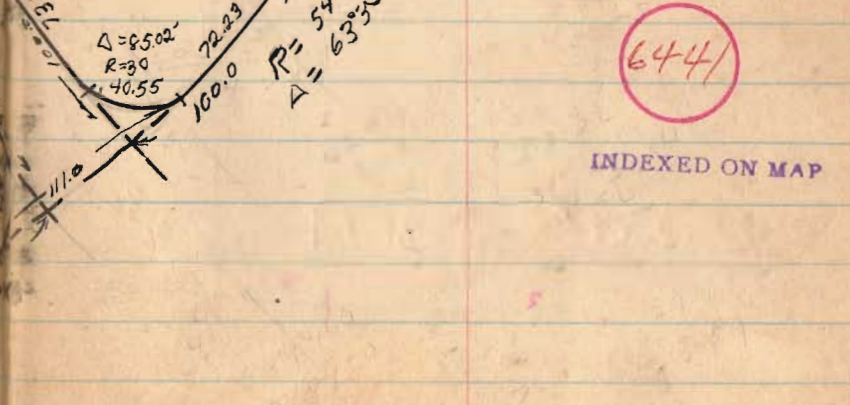
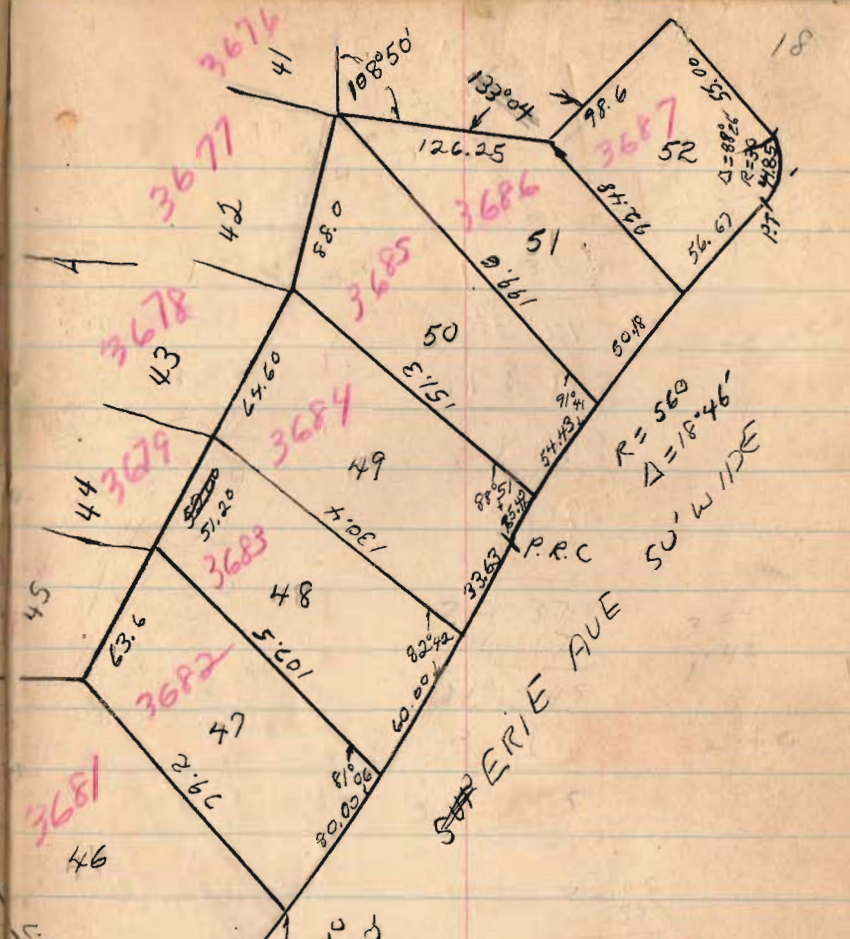
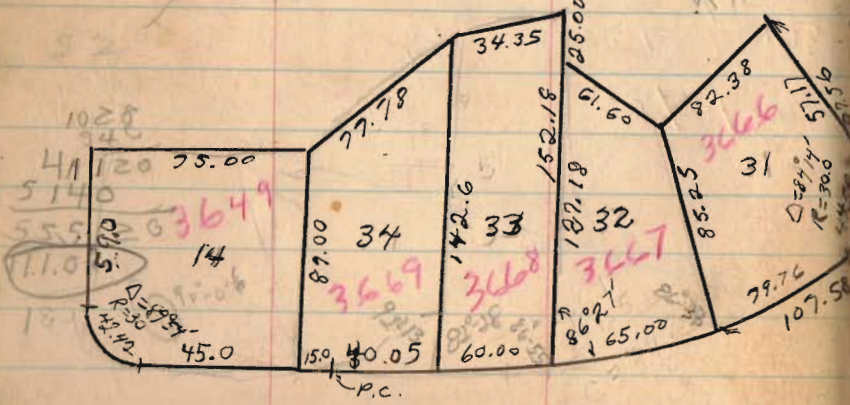
INDEXED ON MAP



14 - 34 thru 31
 46 thru 52

34-33 2° 07.5
 33-32 5° 18.5
 32-31 8° 45.5
 31 14° 36
 46 177° 18
 46-47 22° 37.5
 47-48 26° 54.5
 48+49 30° 05.5
 49-PC 31° 45
 49-49 1° 18
 49-50 3° 55
 50-51 6° 29
 51-52 10° 50

44.50
 72.37
 72.37
 41.95



INDEXED ON MAP

21° 47'
44 thru 46
61 thru 65

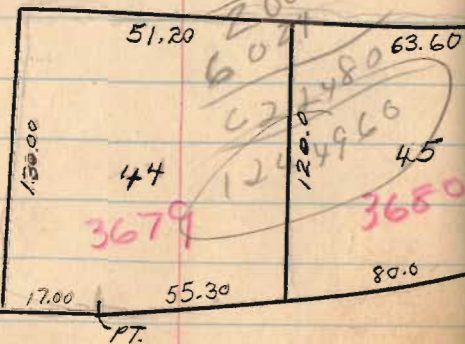
43-44 1° 19' 42°
44-45 5° 09' 5° 05'
45-46 12° 32' 10° 21' 73.70
46 21° 47'
47 27° 20' 30° 56' 86.03
48-49 39 00
50-51 85° 03'

~~10.55~~
33.02

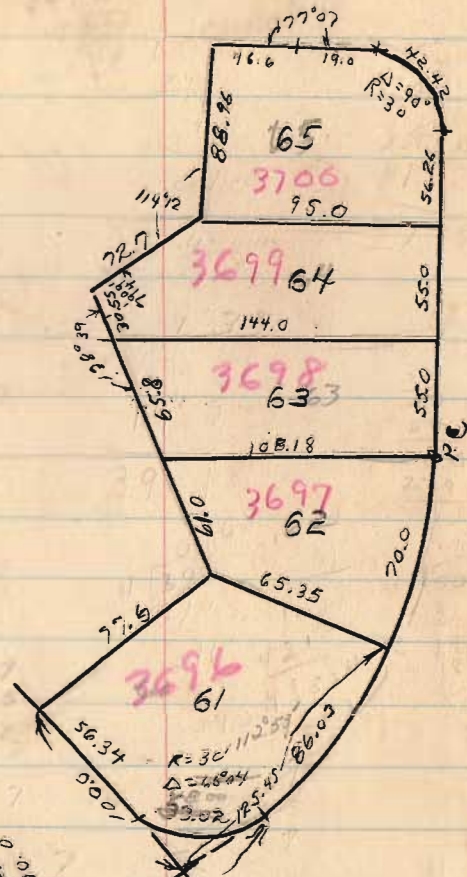
30.56
19° 21'
11 35

2008
310
20080
607
624480
1244960
120.0

43
3678



$D = 9006$
 $R = 310.0$



6441

INDEXED ON MAP

A. P. Elmore
1416 So. Main
90441

20

2-62

2-74

• 36.

13,524
130

Sec 27, T. 4, R. 14; 15, 22A

Sec 33, T. 4, R. 14; 21, 37A
13, 37+2

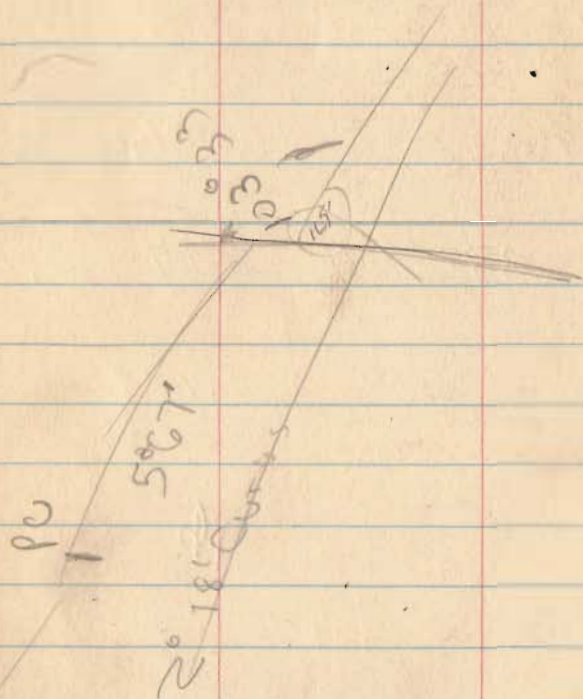
Book 214 pg 181

18 2
927 1500 01
927
5730
~~5954~~
268

6442

INDEXED ON MAP

68°05



644Z

INDEXED ON MAP

F.B 403 pg 25 21

Beg. at a iron set in concrete, +
 iron being used for fence post at
 S.E. Cor. of 2 Atract. thence
 with E. line of said 2 Atract +
 also E line of Low City Als.
 Addition N. 3°48' E 15.74 Ch
 to a large oak post in south line
 of T. O. C. R.R. fence; thence
 with said fence S 71°-22' E 3 Ch.
 S thence S 72°46' E 7.94 Ch to a post
 at a jig in the fence; thence ~~to~~
 N 20° 39' E 26 links to a post; thence
 S 72° 51' E 8.625 Ch., S 72°-47'
 7.41 Ch to a iron pipe; thence
 S 3° 04' W 9.57 Ch to post, said
 post N.E. Cor. of 495 Atract;
 thence with N line of said
 tract N P 6° 26' W 26.4 Ch to
 place of beginning containing
 33.29 acres more or less

Elmore

Sapt 53

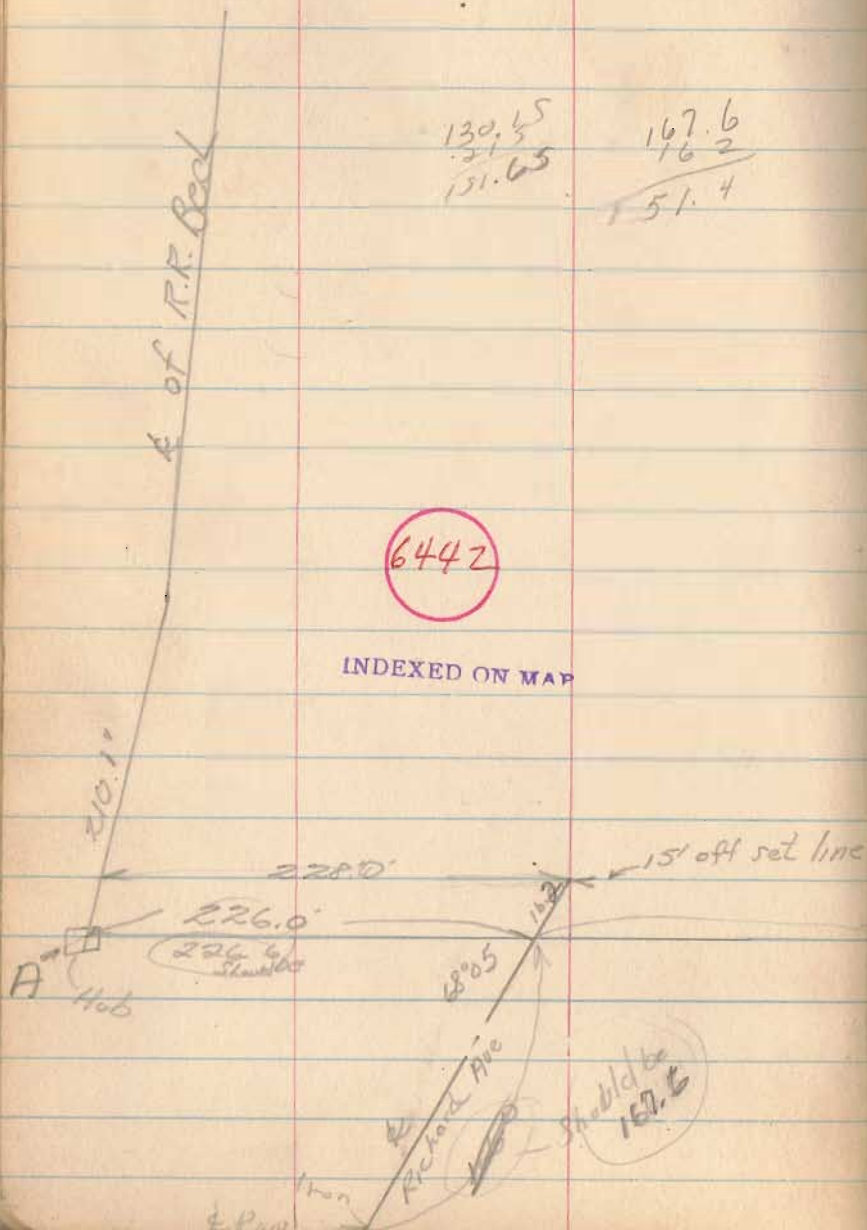
24

AB is 1038.8 on Peed
AB is 1037.0 from City Map

130.45	167.6
21.5	16.2
151.63	151.4

6442

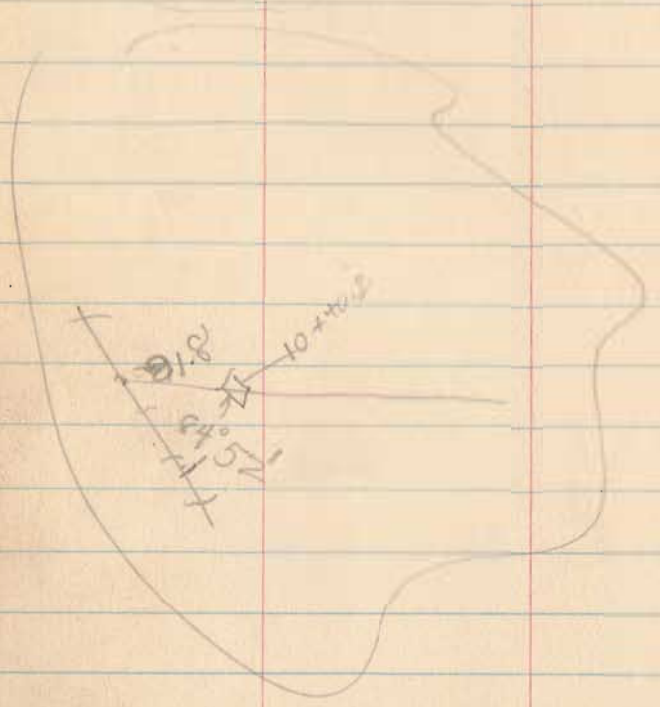
INDEXED ON MAP



862.5
864.5

Should be
862.5

Angle
Iron
in
Conerd



6442

INDEXED ON MAP

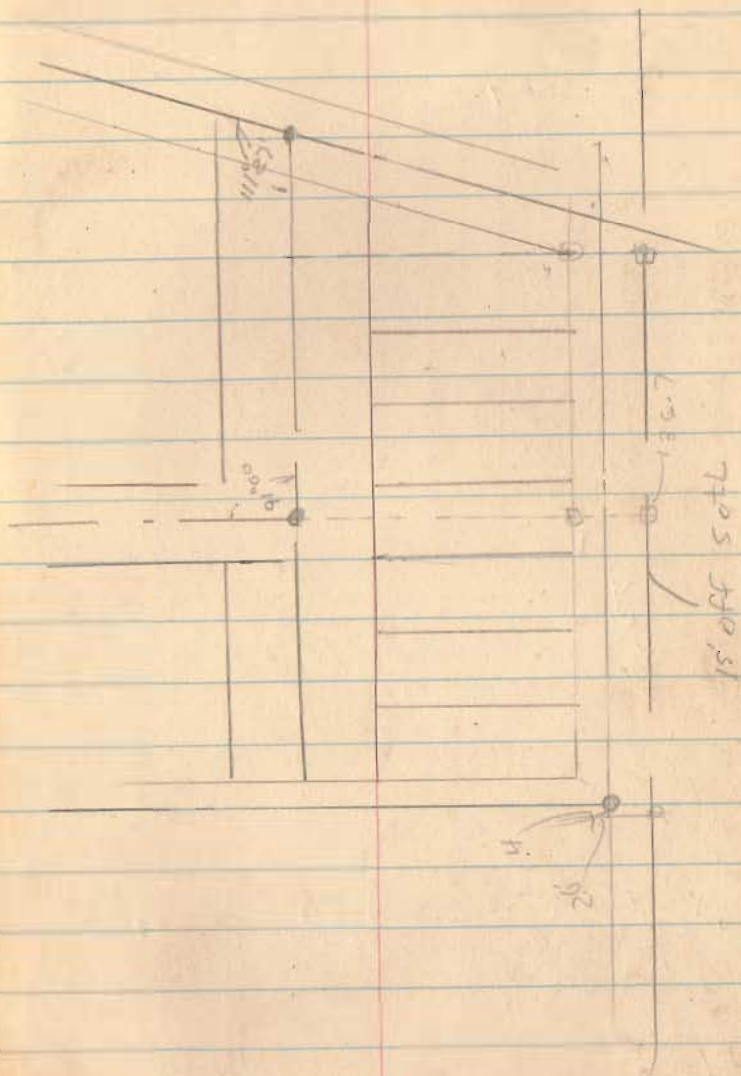
25
 5+60-205
 660-145
 7+10-105
 7+60-115



6442

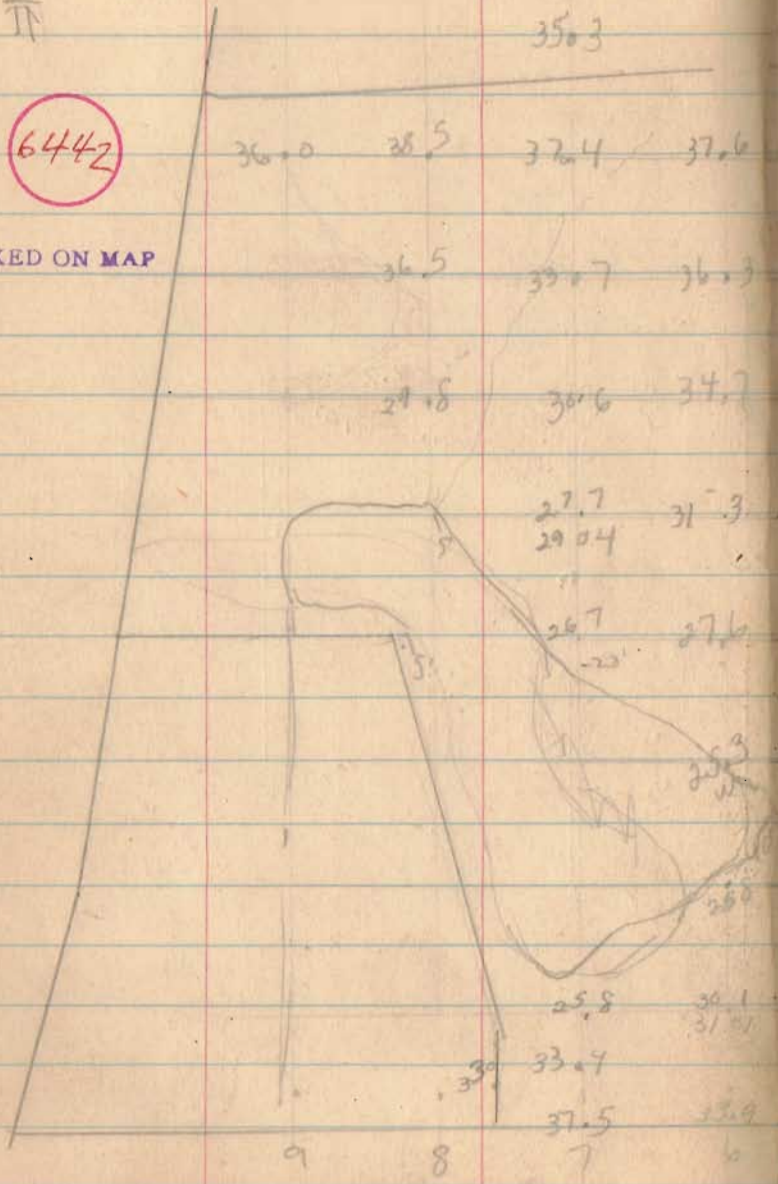
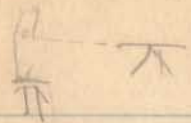
INDEXED ON MAP

26



6442

INDEXED ON MAP



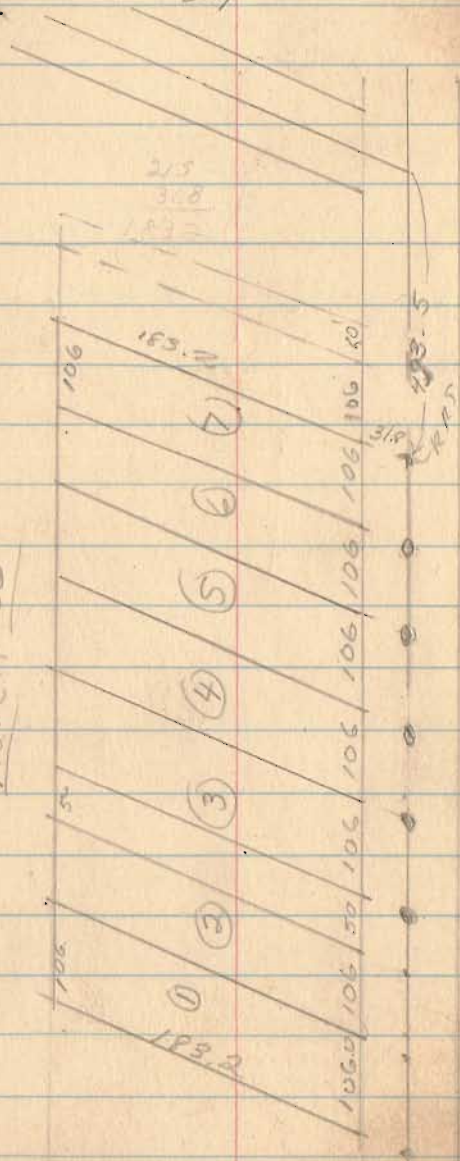
Dec 30, 53 29
Draw maps Dec 31, 53

	35.3	34.4	38.5	37.5	42.2	45.0	45.3	
	36.0	36.5	39.67					
	36.5	39.7	41.7	43.4	45.4	48.1	45.7	44.5
	29.8	30.6	43.3	43.0	47.2	49.3	48.3	
			44.85				50.0	
	27.7	31.3	35.4	35.7	44.58	46.3	48.3	47.25
	29.04		36.02		43.2			
	26.7	27.6	28.9	30.1	31.8	40.1	44.5	46.4
		25.3	28.9	33.4	31.9	37.0	40.31	42.0
					33.36		40.8	
			29.5	32.6	39.6	38.5	39.5	51.5
			30.90					
	25.8	34.1	28.7	37.3	39.8	42.4	42.7	41.98
		31.4						
	33.7							
	37.5	33.9	33.1	35.2	38.9	42.8	42.0	
			35	4	39.30			
9	8	7			3	2	1	

1244.80
Top of 1235

See p. 43
for work in "60"

March 55



Roy Morris
Wake Twp.
Section ~~34~~, Town 4, Range 9
257

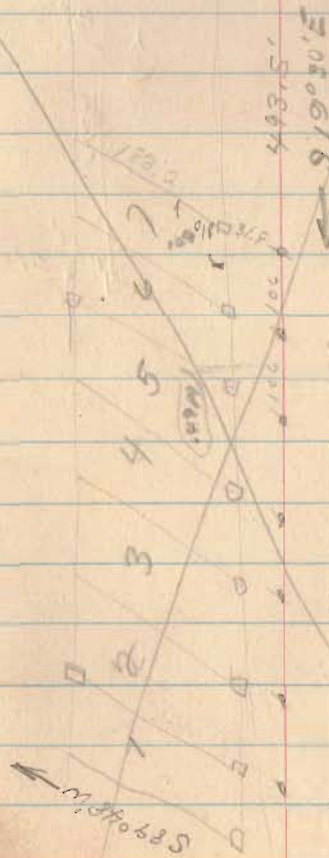
Aug 15, 54

31

2987

INDEXED ON MAP

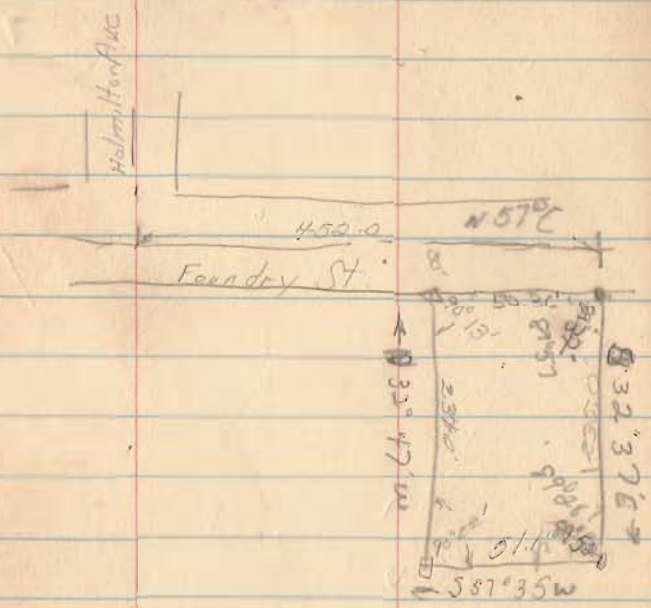
CH. 155



CH. 155

183.2
3/8
183.2

Ed Clingerman
E. Liberty



July, 54

32

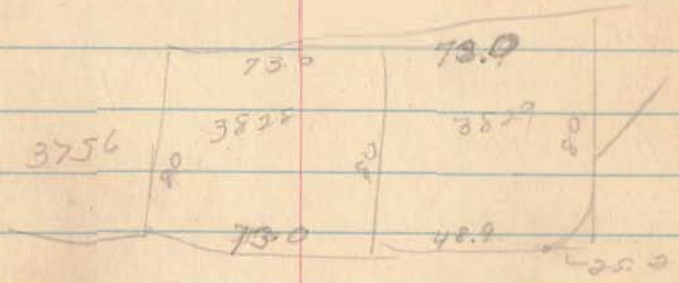
3720
37
27

0.850
7000

3321

INDEXED ON MAP

121.9
25.2
147.1
73
74.1
25.2
48.9

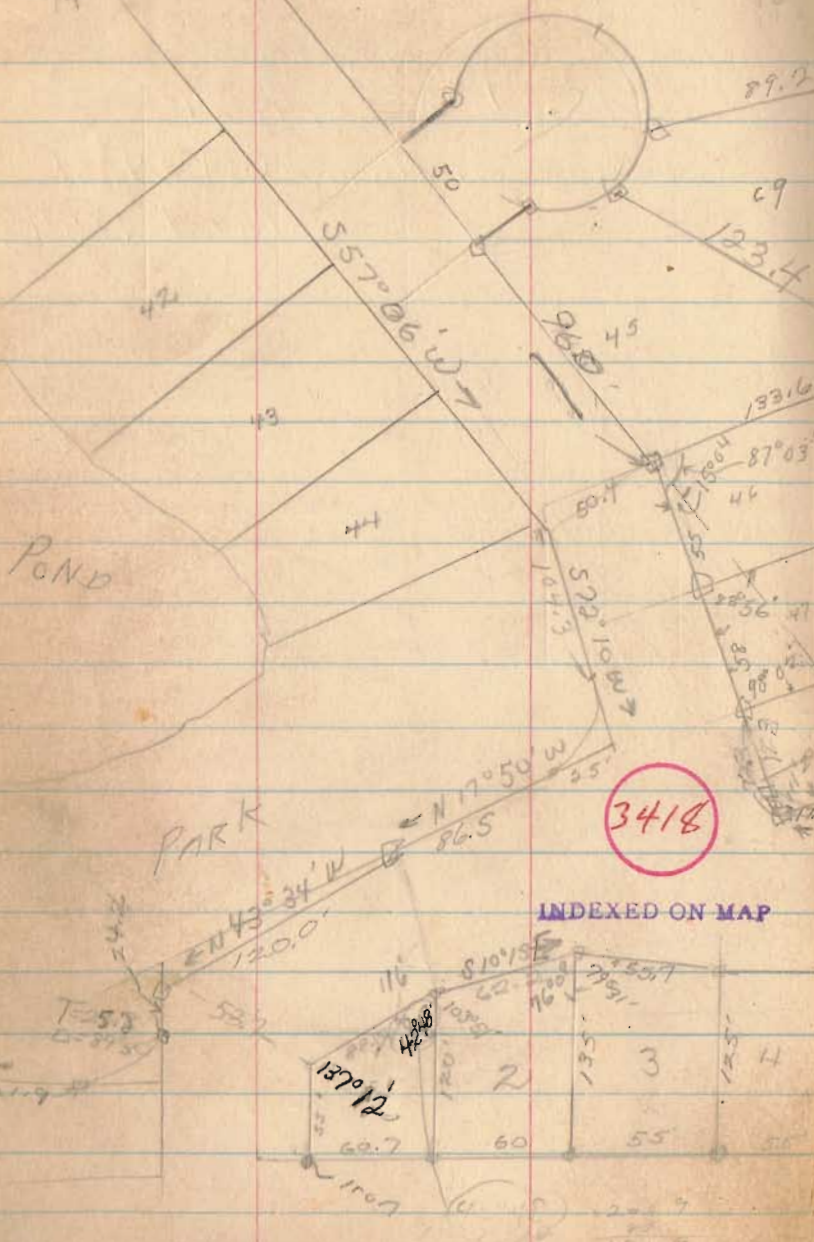


Ed Clingerman
E. Liberty

$$\begin{array}{r} 155^\circ 40' \\ 76 \\ \hline 79 \end{array}$$

South View No 2

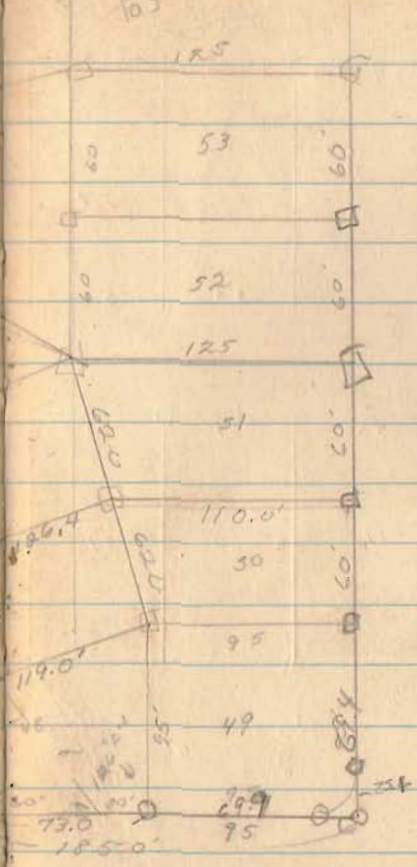
$$\begin{array}{r} 99 \\ 123 \\ \hline 121 \end{array}$$



INDEXED ON MAP

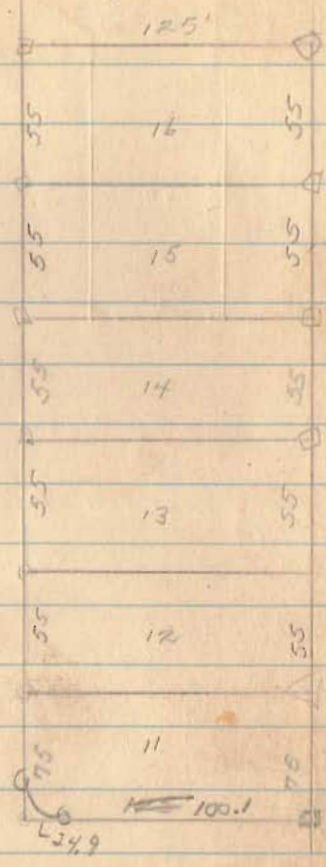
$$\begin{array}{r} 46 \\ 48 \\ \hline 103 \end{array}$$

$$\begin{array}{r} 41^\circ 51' \\ 103 \\ \hline 146 \end{array}$$



$$\begin{array}{r} 72.3 \\ 17 \\ \hline 55.3 \end{array}$$

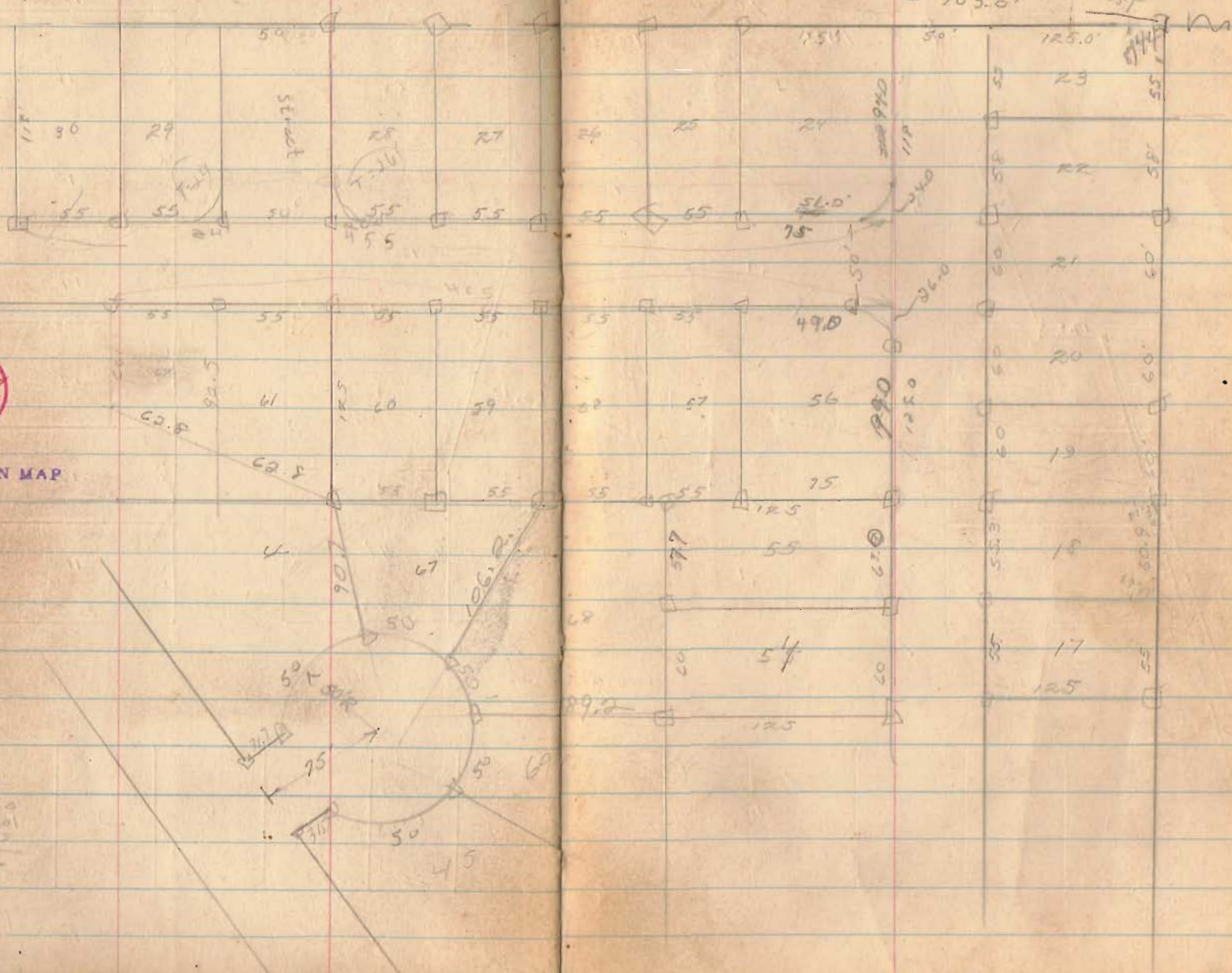
34



Found Part

South View #2 cont.

35



3418

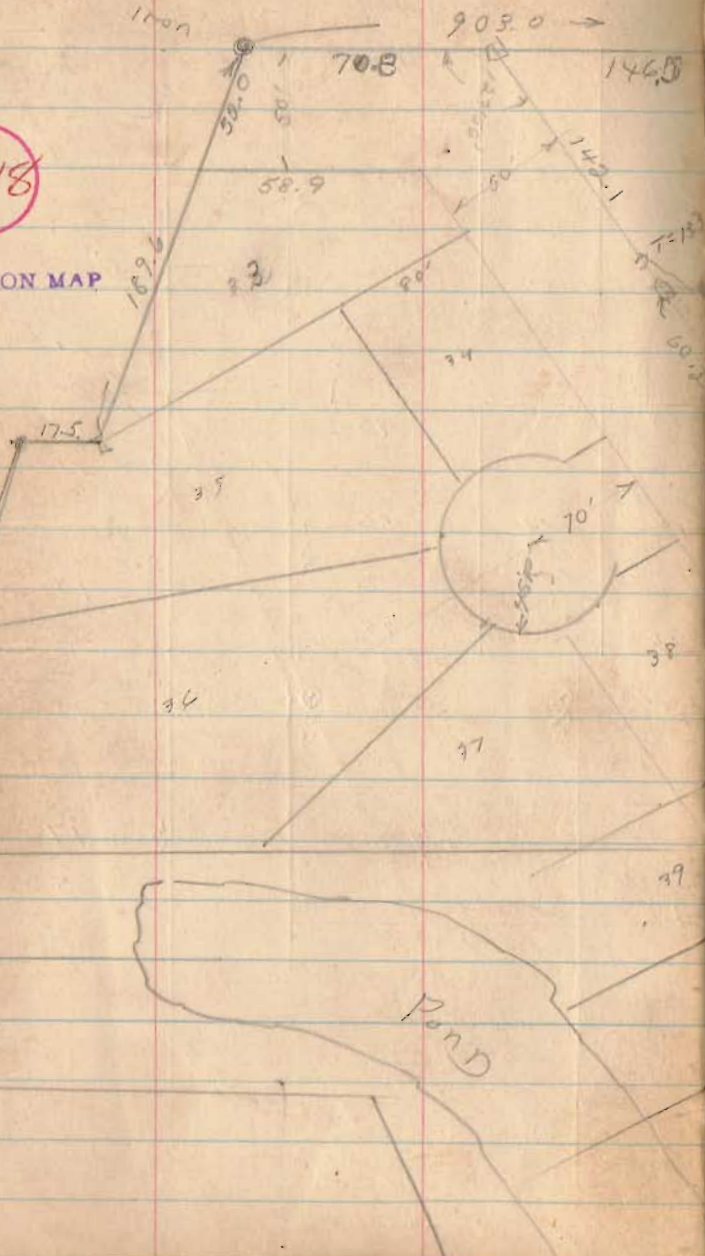
INDEXED ON MAP

50
22.5
25
485
131
556

South View #2 cont

3418

INDEXED ON MAP

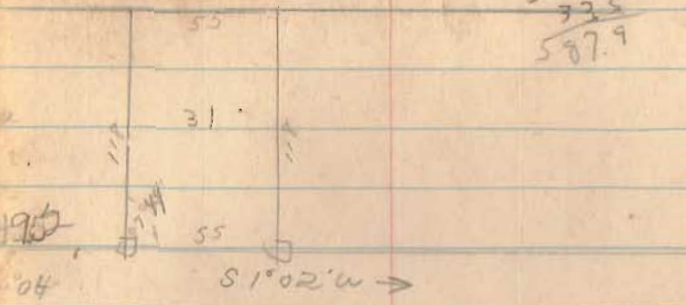


142
142
142
142

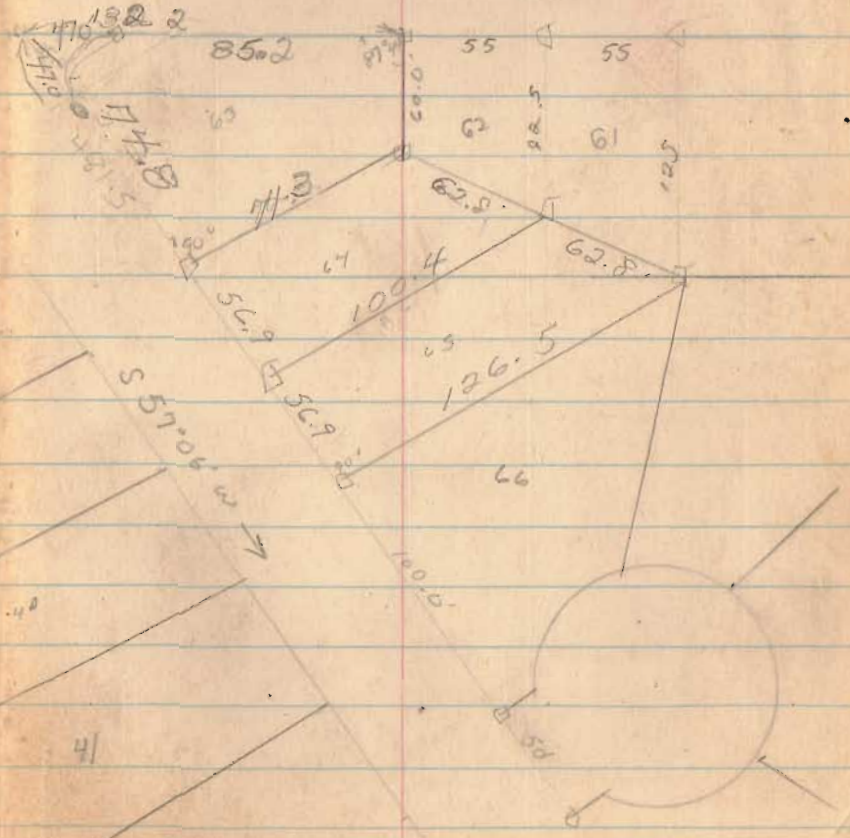
0293
60
15580

50 5
55 5
61 4
72 5
587.9

56 9
56 3
45 5
50 5
55 5
61.4
70.6

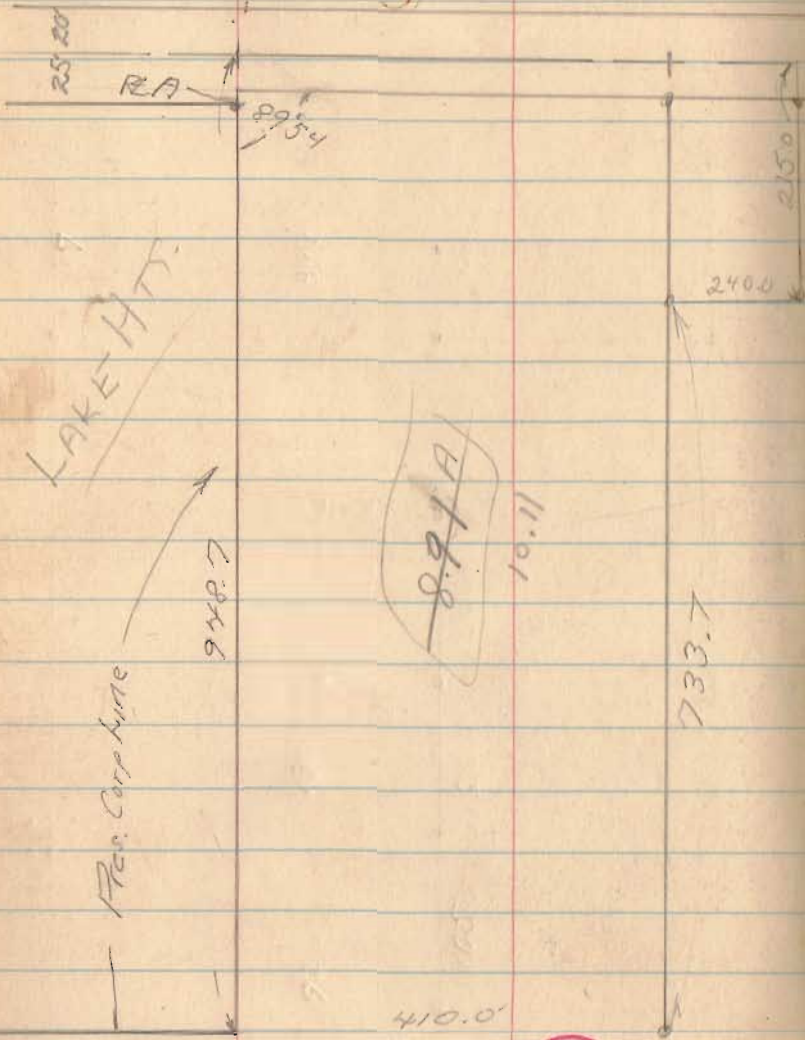


92.7
150
113.8
122.8
781.0

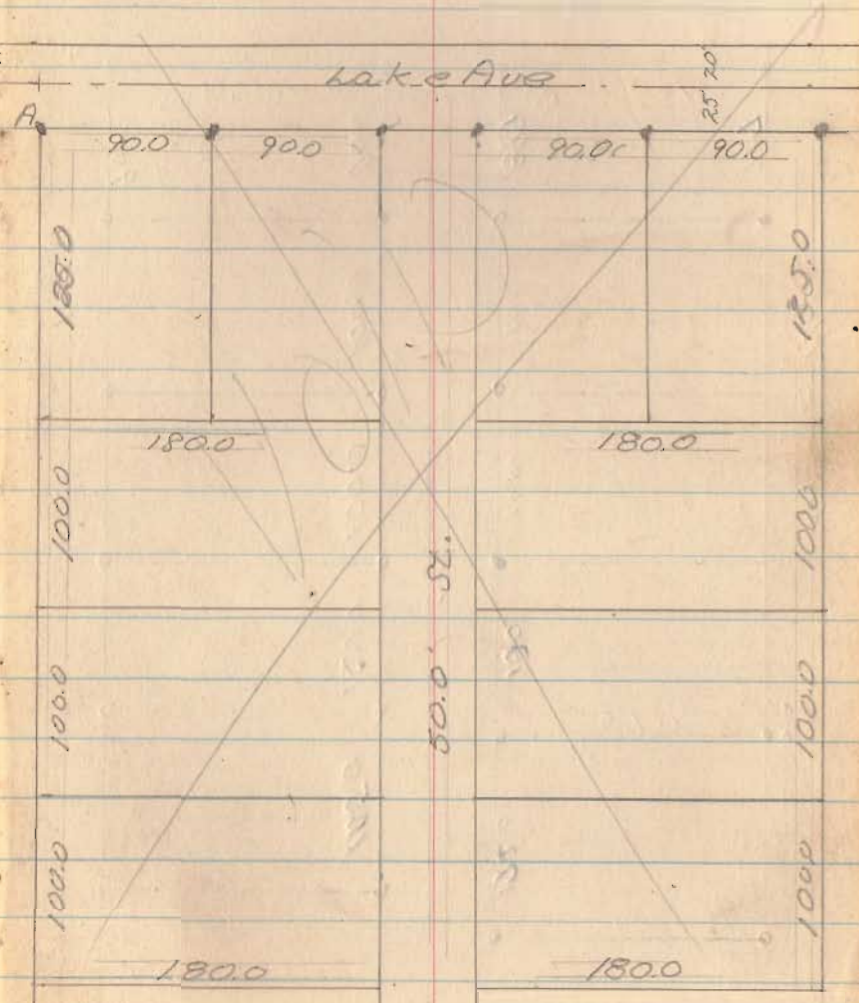


Roy Morris
 Lake Twp. Sec. 27
 T. 4, R. 14

948.7
 757



Roy Morris Allotment



34-24

Ray Morris

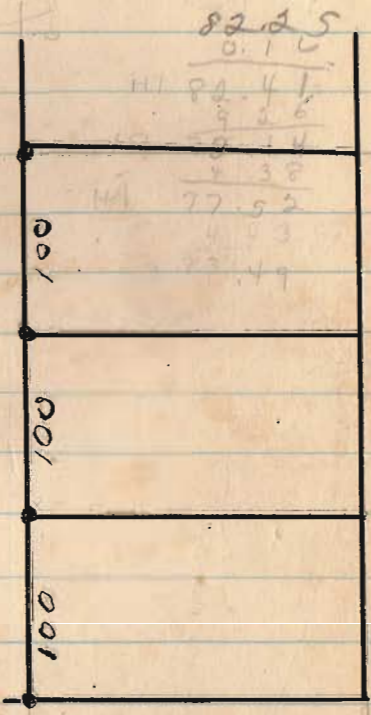
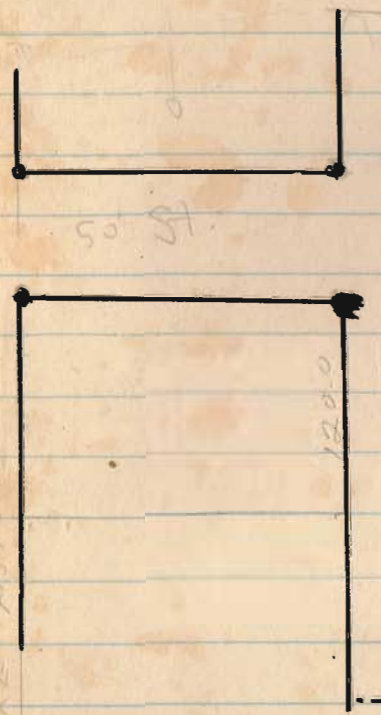
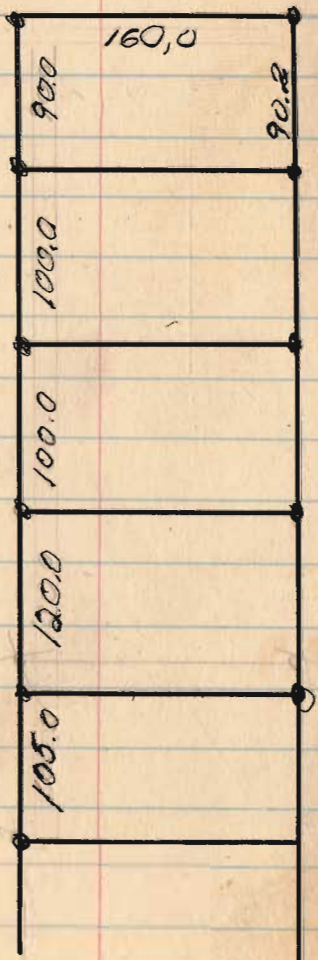
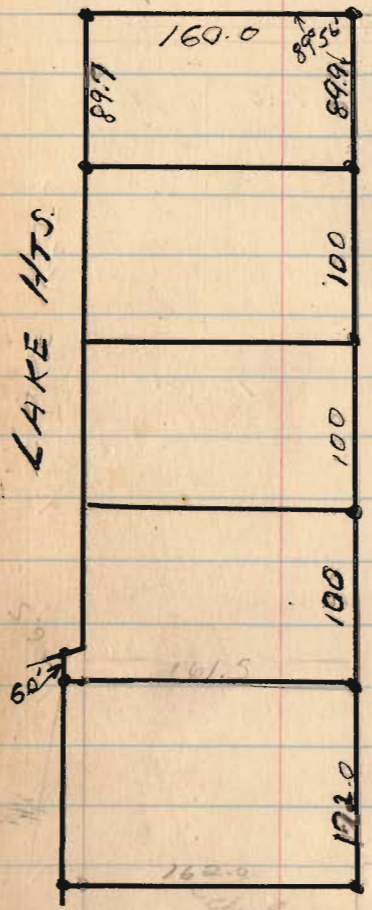
72.53
0.67
70.85
63

65.56

40

Lake Ave

LAKE HTS.



3424

INDEXED ON MAP

82.25

0.10
 111 82.41
 9.06
 59.14
 4.38
 77.52
 4.53
 82.49

Geo. Bitart
Zanes field

U.M.S 3137

Mar 24, 56

41

N 17 1/2 E 401'

76' 70' 60'

N 69 1/2 W 341'

S 61 1/2 E 360.8'

N 10 1/2 W 103.1'

ditch

2700

INDEXED ON MAP

N 73 1/4 W 269.0'

S 74 1/2 E 245'

N 26 3/4 E

70.1'

90.4'

70.7'

109.4'

0.17A

101.8'

0.16A

78.0'

0.14A

86.0'

86.9 1/2'

277.0' ← N 20° E

160' Alley

50

6

5

4

70'

70'

70'

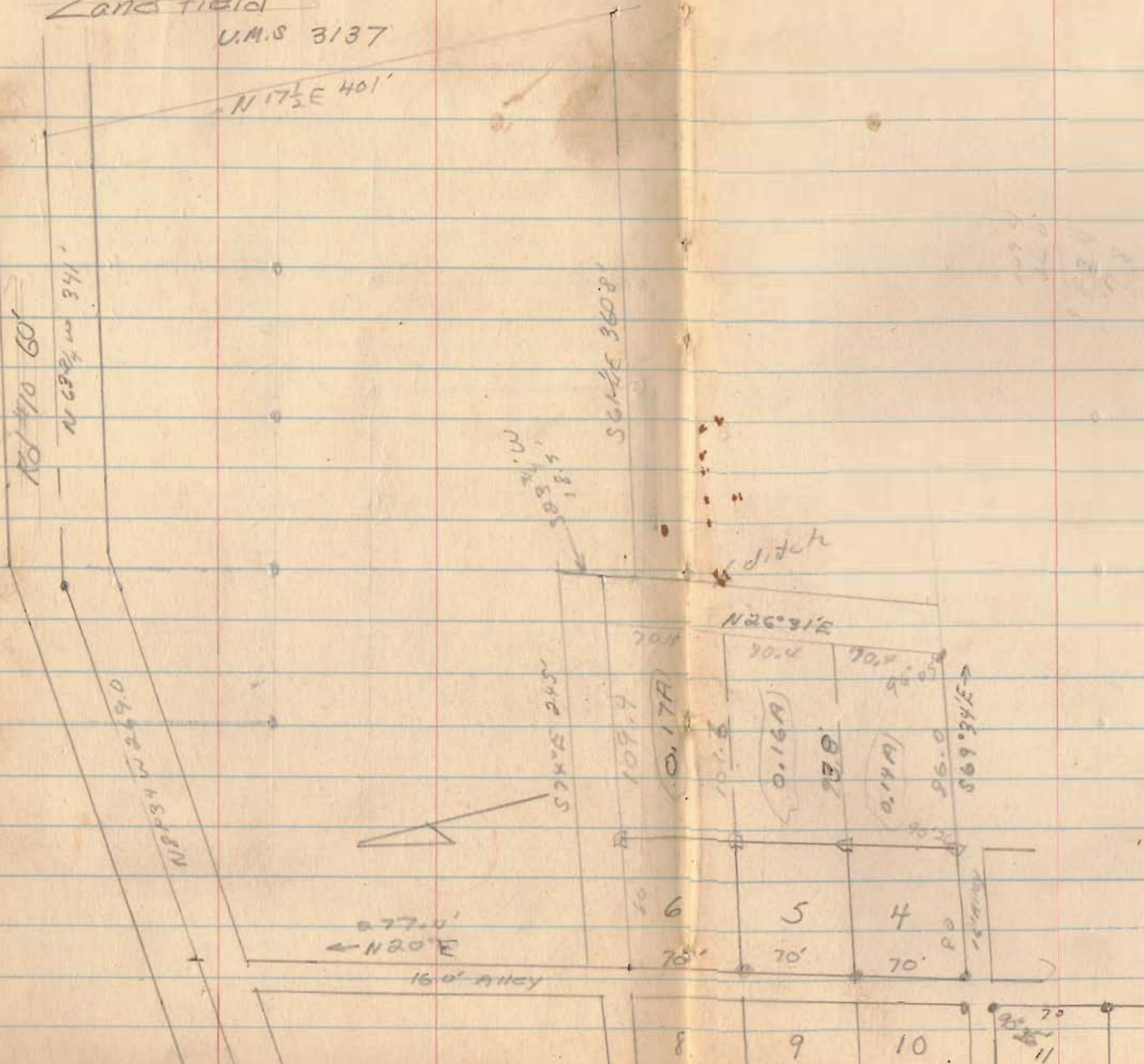
8

9

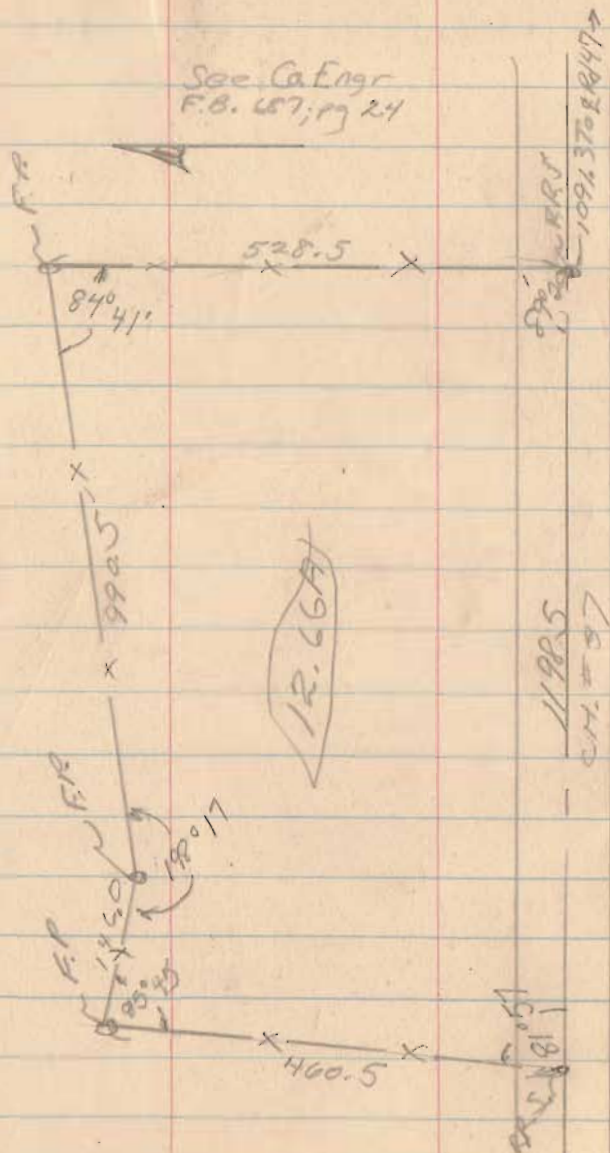
10

70'

11



For Paul McCormick
 O.V.M.S. 9905
 McArthur Twp



Nov, 55

47

89° 20
 81° 57
 83° 45
 198° 17
 84° 41
 540° 00

3829

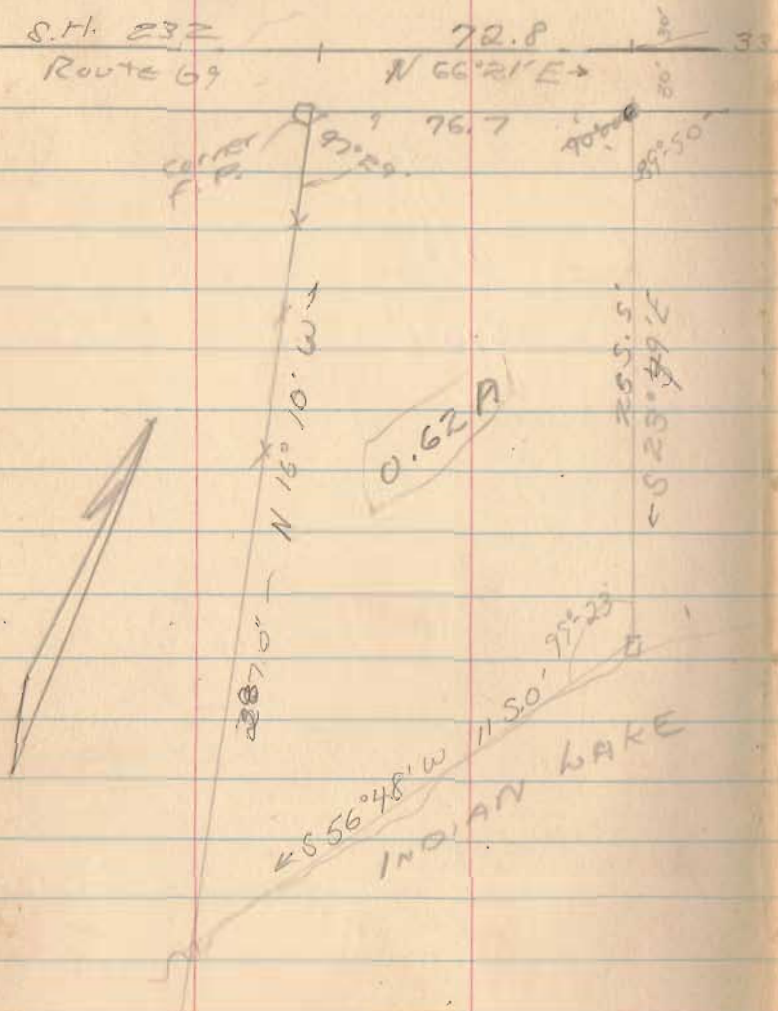
INDEXED ON MAP

For Mary Bales
P.F.D. (Island View)
Lake View

Being in Richland Twp
U.M.S. 12277

1955

48



see F.B. 11
P. 10

P.C. 30.5 + 0.5
From Plans L-17

2046

23 49
56-48
80 37

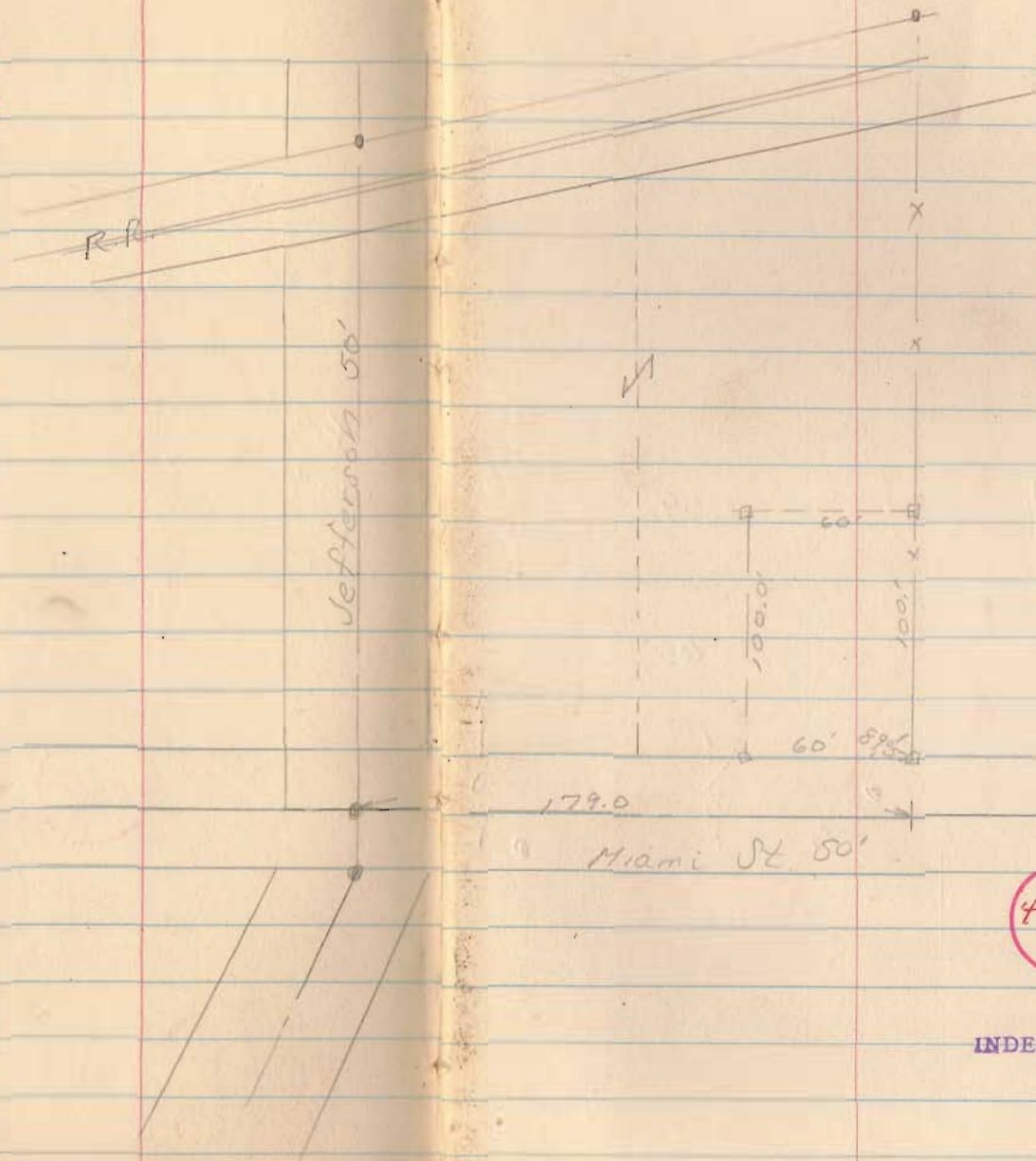
INDEXED ON MAP

Hefman dollar
Quincy, Ohio

See Bk 3; pg 74

June, 1955

49



4221

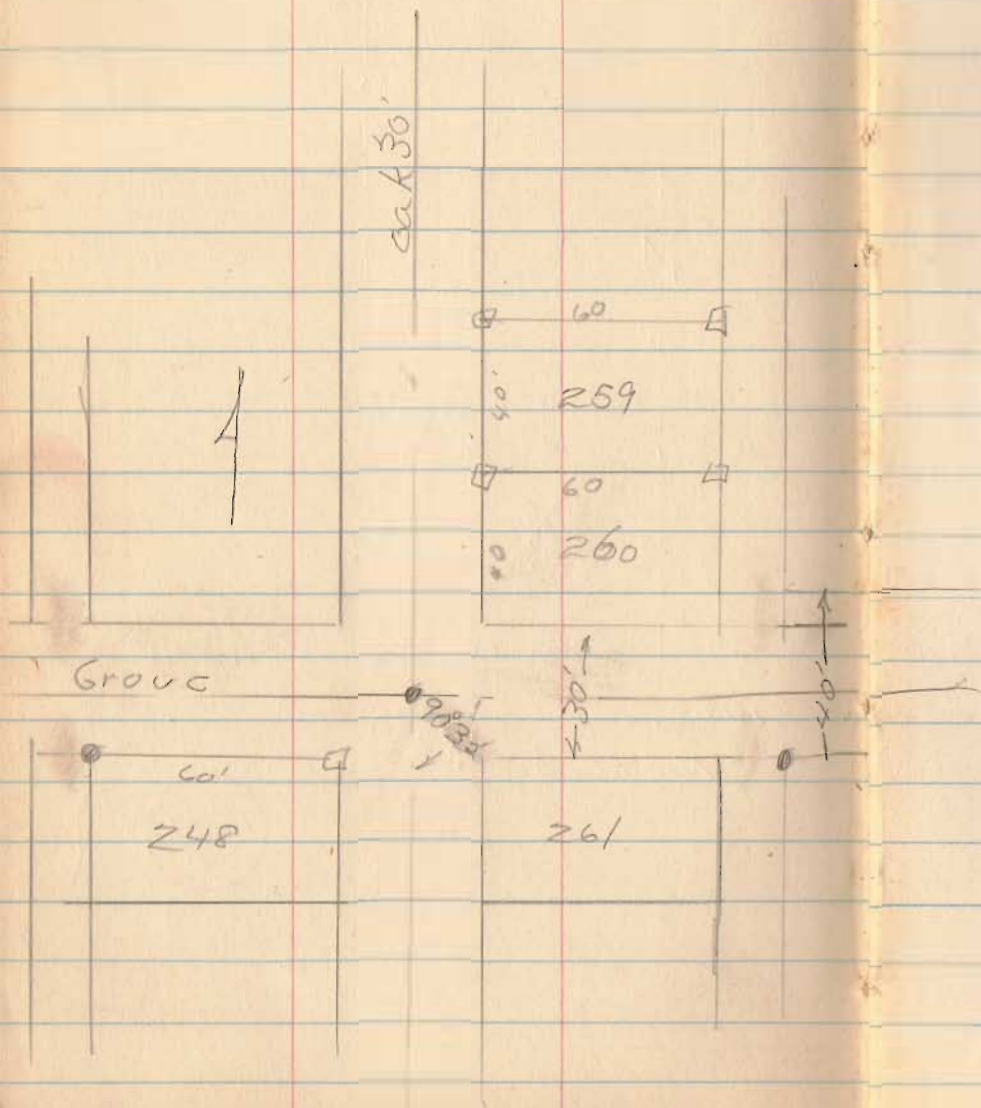
INDEXED ON MAP

Lake View

June 11, 55

50

Paul Shaffer
819 Warder St
Springfield



6443

INDEXED ON MAP

Perry Twp
East Liberty
V.M.S 46D9

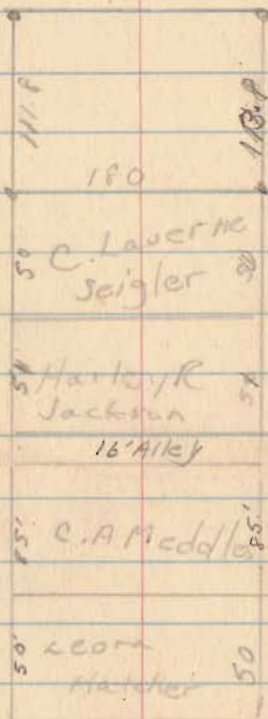
June 3, 55

51

24 24

Rd 170

149
96



8719
Springfield

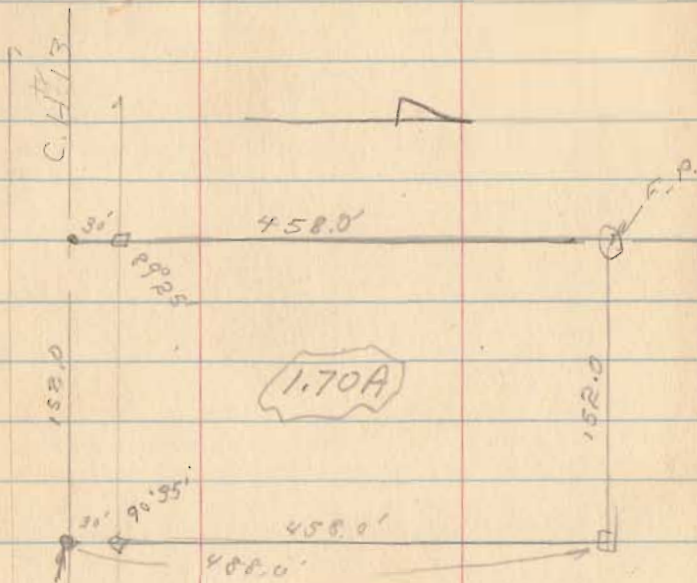
6444

INDEXED ON MAP

L. F. Smith
Harrison Twp
Sec 24, T-3, R-14

4-23-55

52

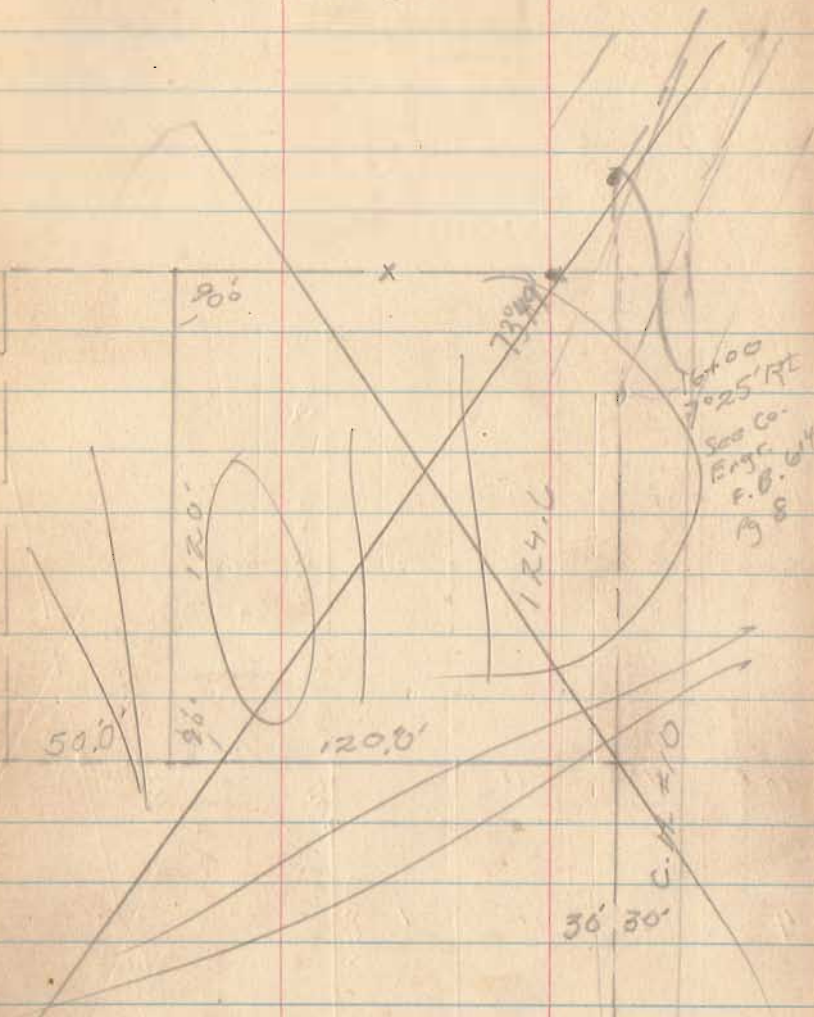


1081.0'
586.05'-W

6126

INDEXED ON MAP

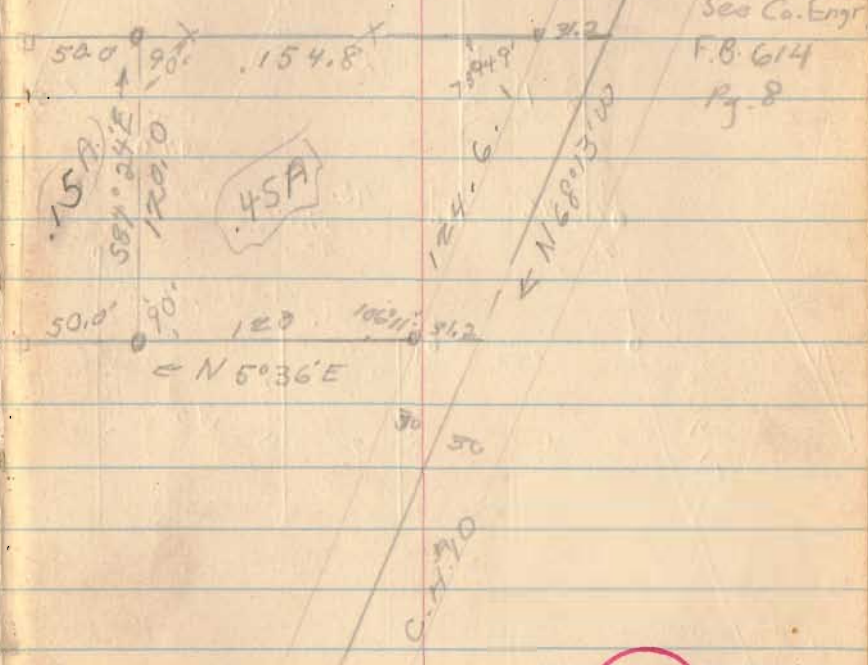
For Organ
Lake Twp.
U.M.S 4478



Nov. 55

55

154.8
50
31.2
236.0



2495

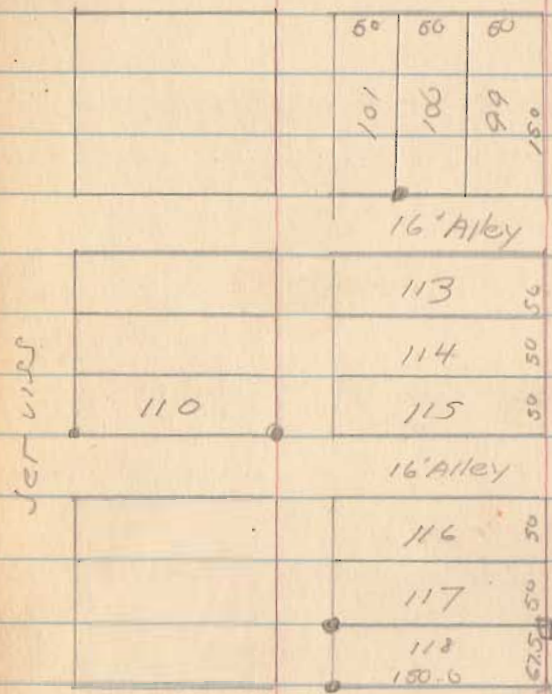
Lake view

509

51

60

Lake 50'



6448

INDEXED ON MAP

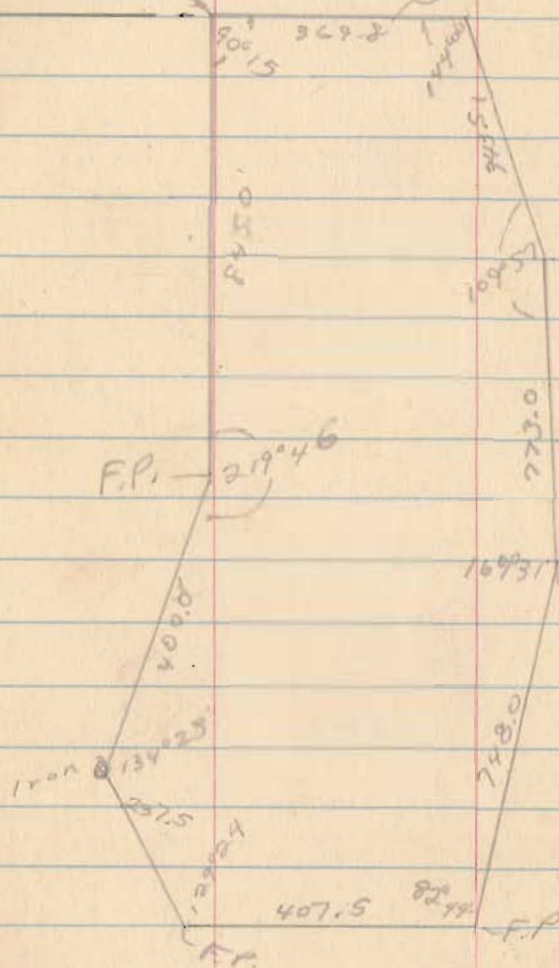
Harrison 50'

Paul wish
Sec 36; T. 4; R. 14
Lake Twp.

1-16-53

61

to west line of Lake Twp.
← 2056.6



See pg 38 of County Engr.

F.B. 600

3798

INDEXED ON MAP

Elliott to McKinnon
Harrison; Sect 7, T-2; R-15

Deed Courses of Channel

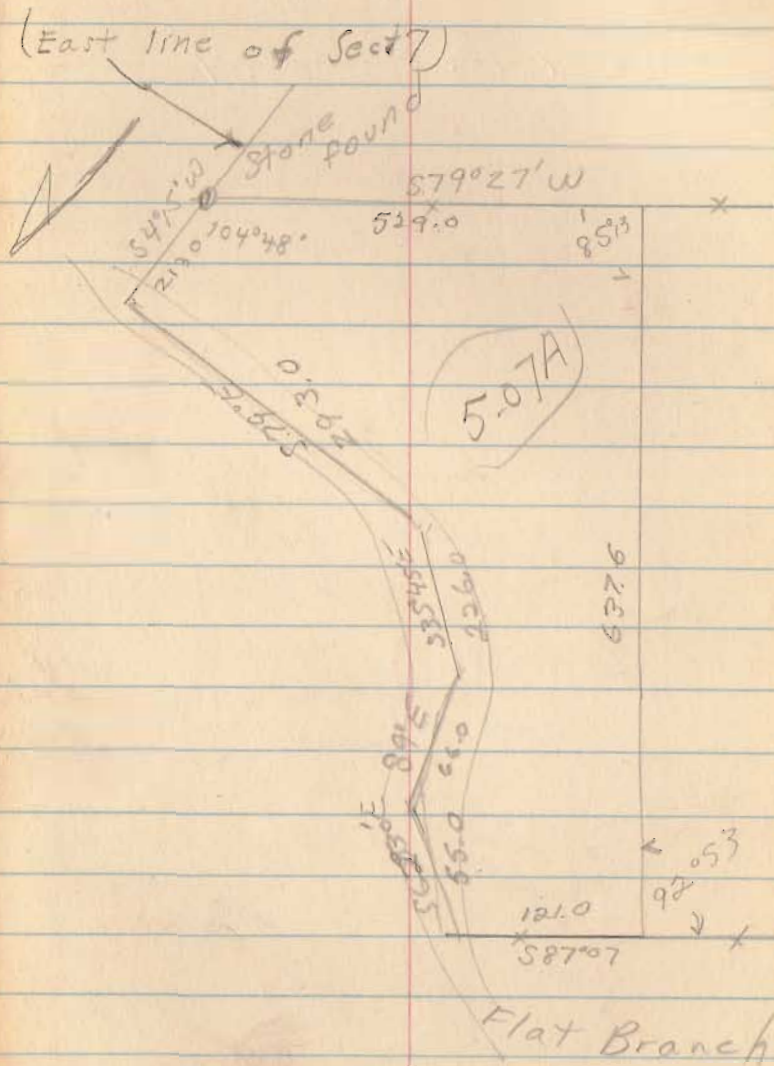
N 4 1/4 E		
S 79 E	4.44 ch.	293.0
S 35 3/4 E	3.42	226.0
S 9 E	1.00	66.0
S 65 3/4 E	3.02 apart	35.0
S 35 E	4/0	
S 16 E	5.43	
S 13 W	0.84	

6092

INDEXED ON MAP

Aug 23, 53

63



Bloom Center
Stanley Rex
Bloomfield Twp

T-7; R-8; Sec 21

6123

INDEXED ON MAP

July 31, 52

64

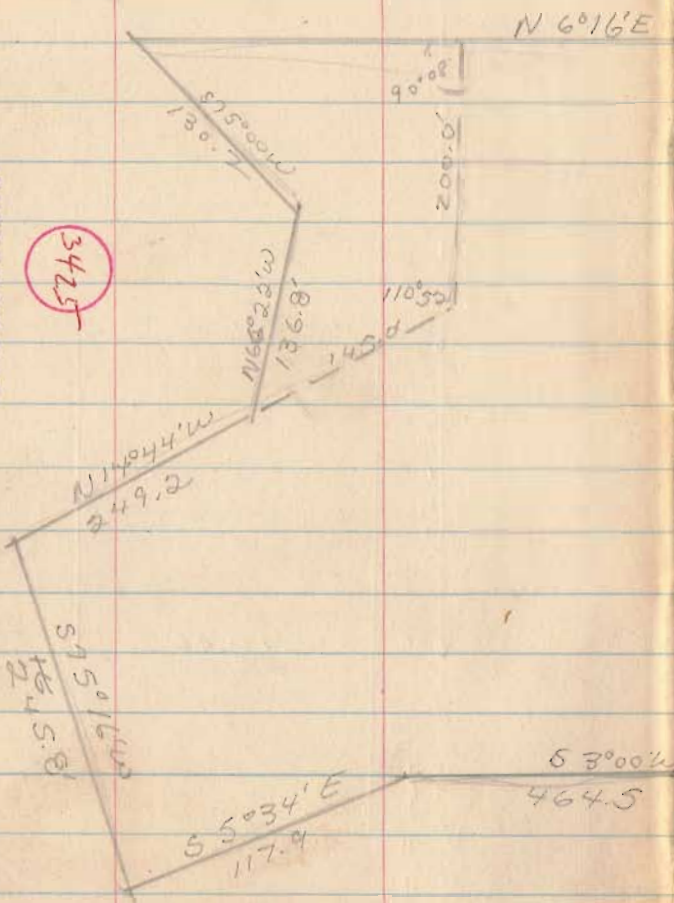
iron C.H. 60



Traverse of
 Holmes H. Cross
 Blue Jacket
 C. U. M. S. 4399

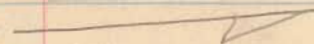
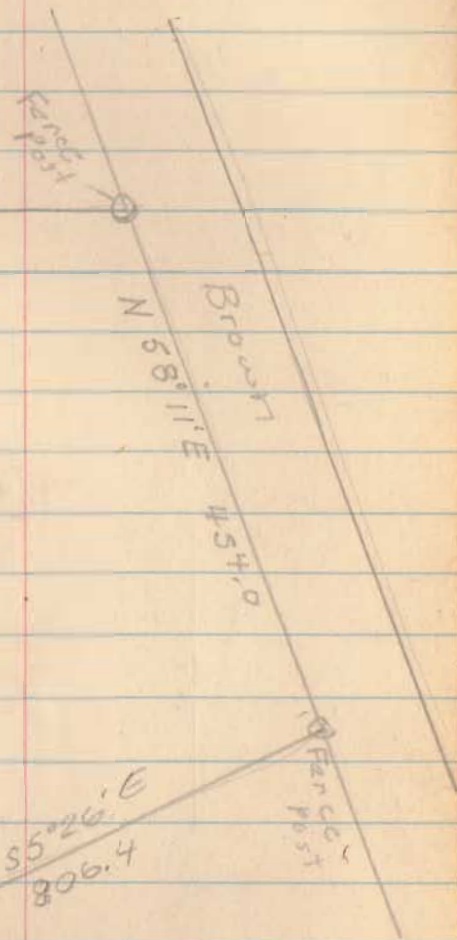
INDEXED ON MAP

3425



May 52

65

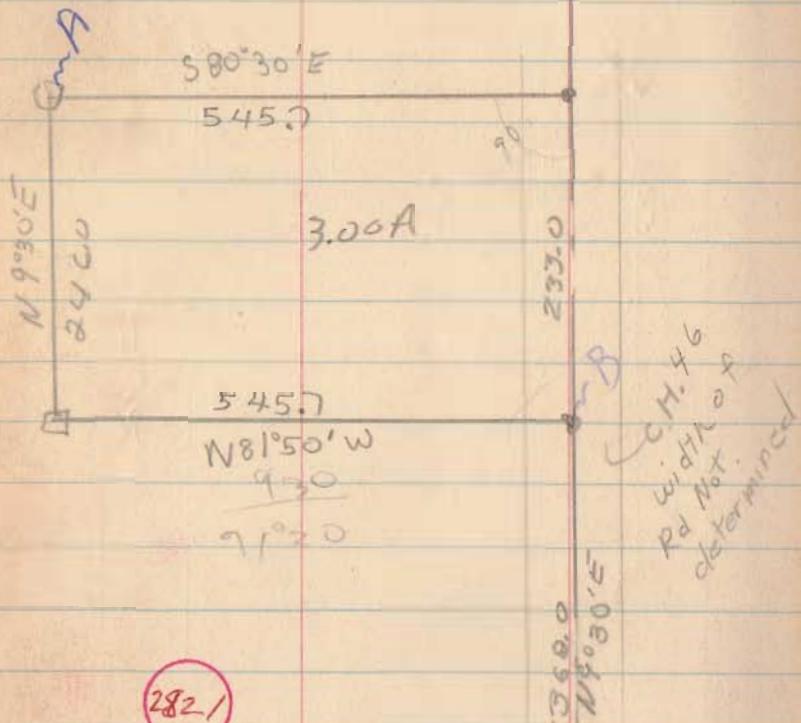


Haws
Harrison Twp
19-2-15 of Between the
Miami R.

508
8k 8
1966

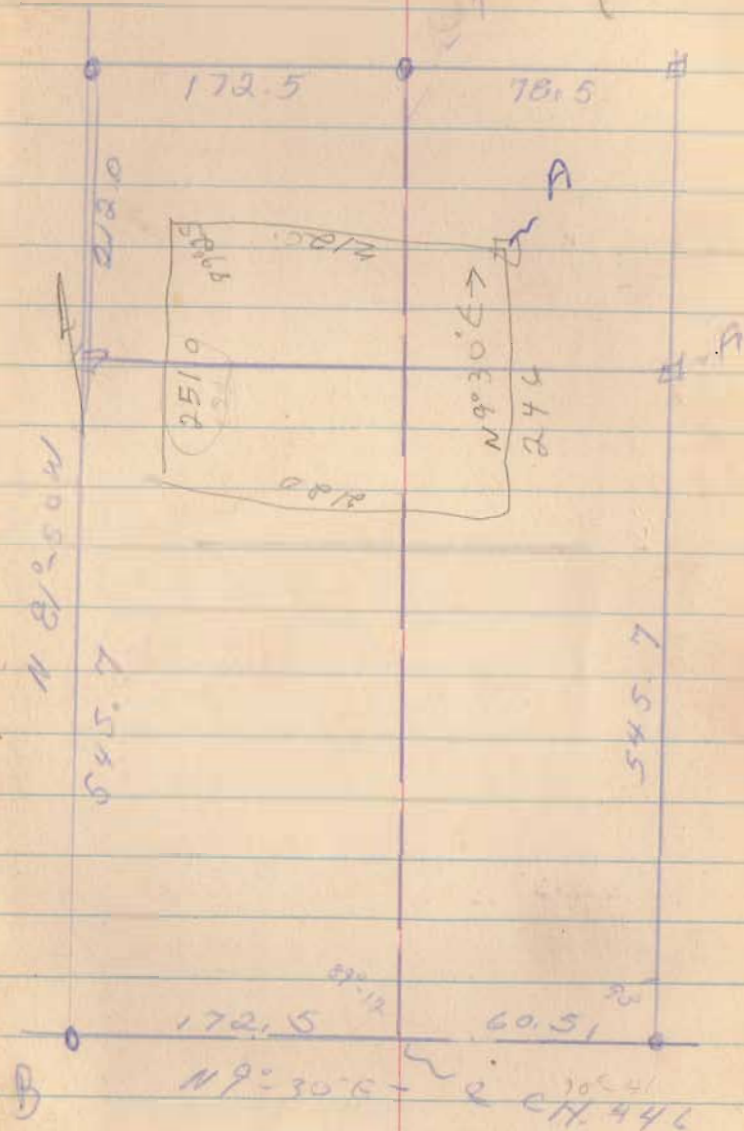
June, 54

67



Stone
S.E. cor.
of Sec 19

INDEXED ON MAP



Bailey
Quincy, O.

See County Engr.
F.B. 603; pg. 15

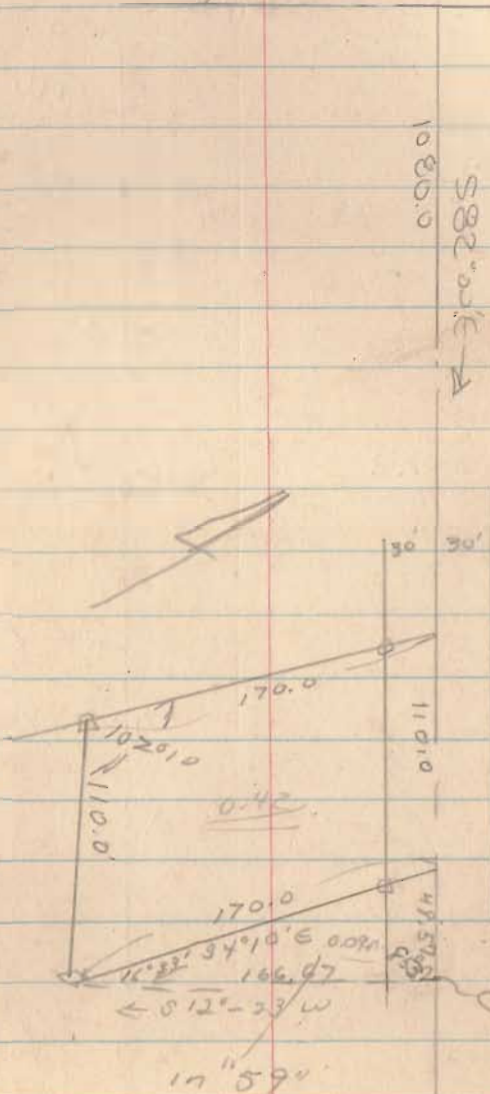
3136

INDEXED ON MAP

Mar, 54

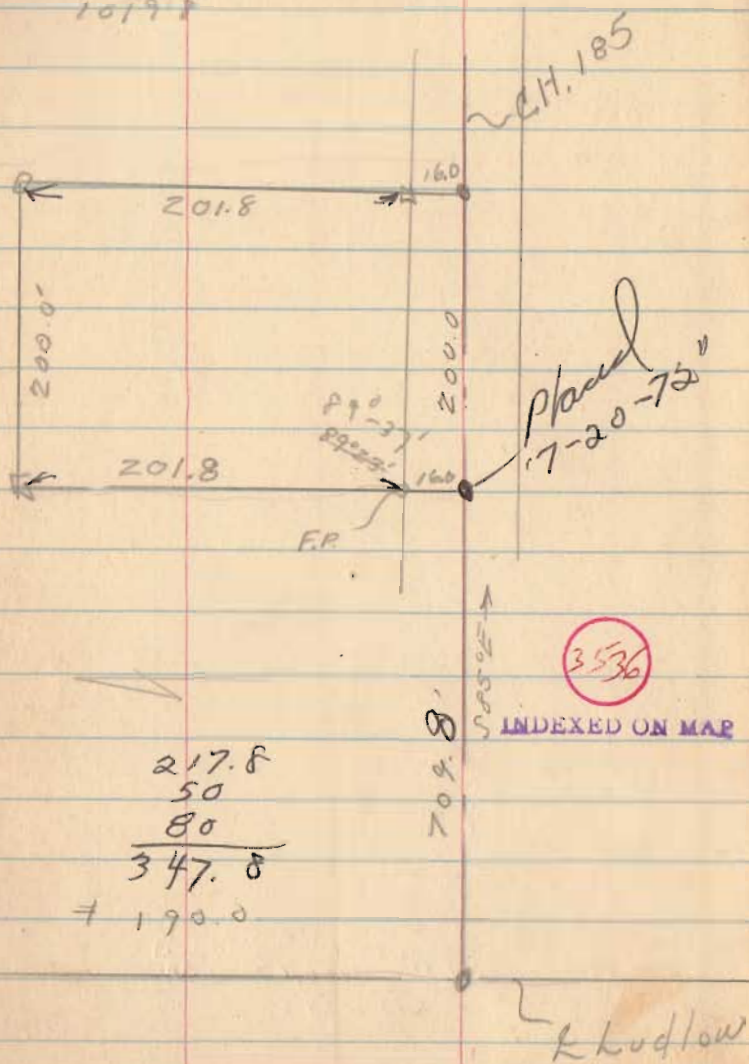
68

rk Miami St



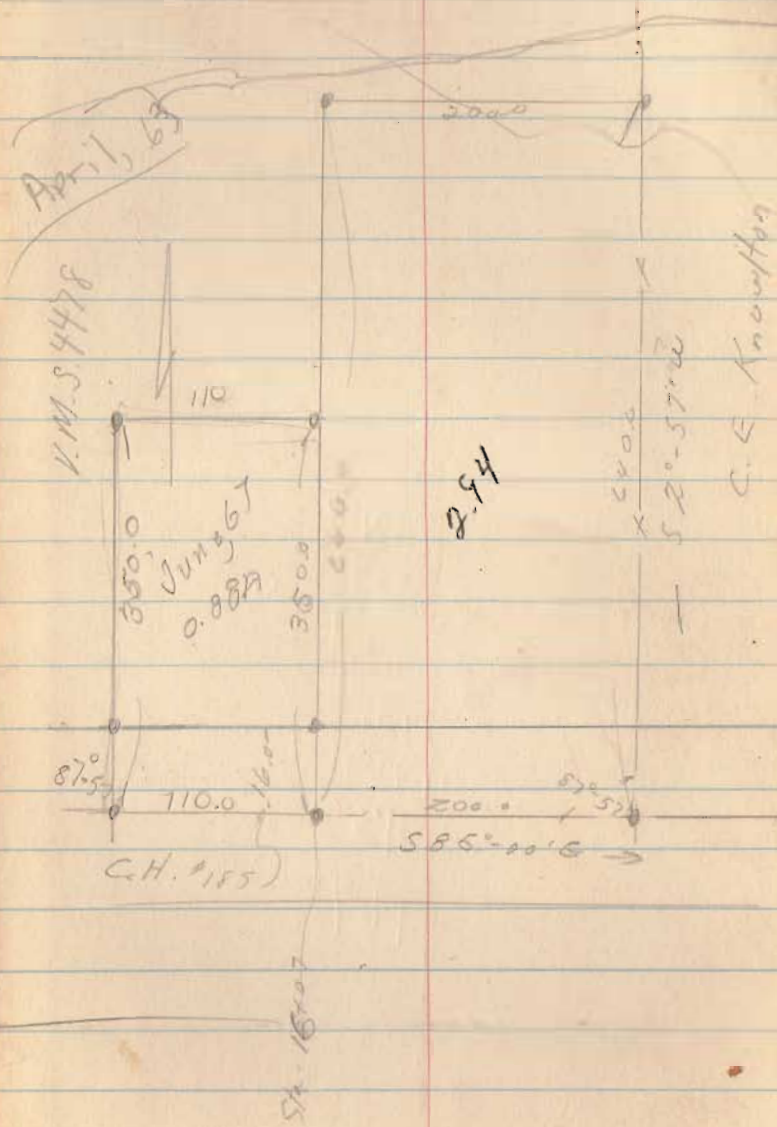
Tillman
Lake Twp
O.V.M.S.

10086
10198



April, 54

69

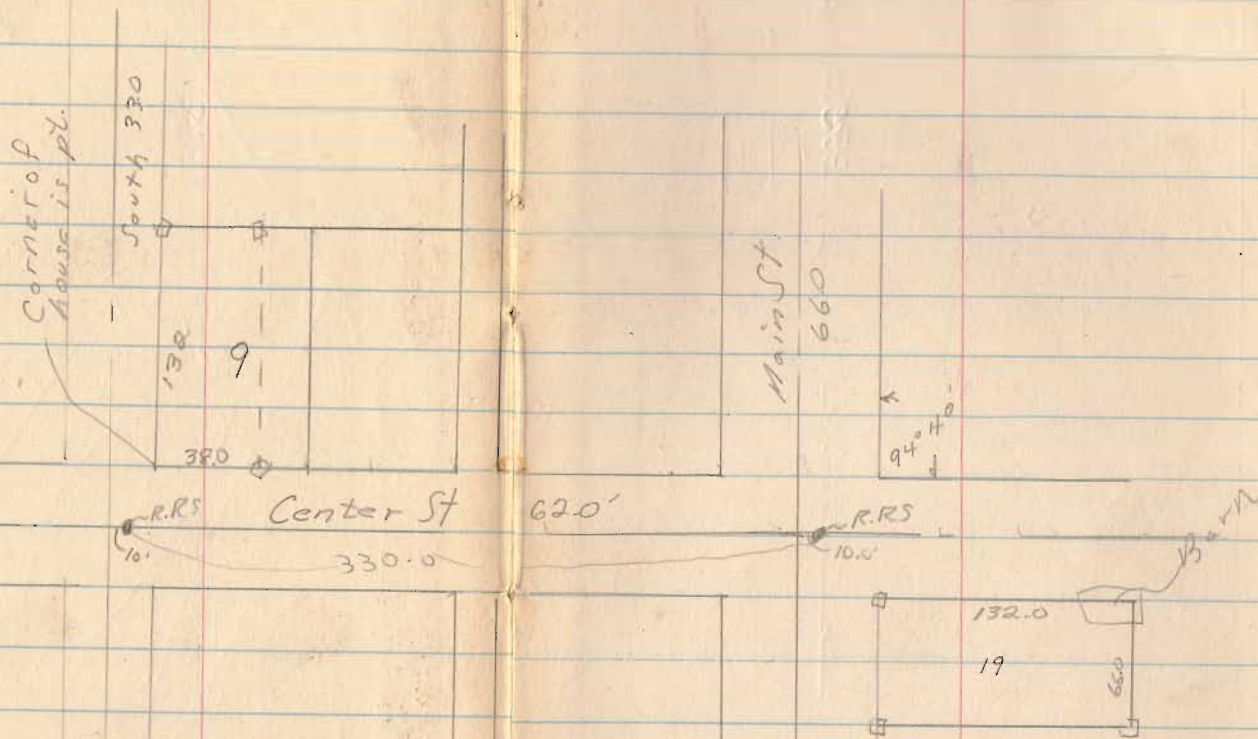


Logansville

Part lot 9 & 10 + 19

Sept, 53

71



6450

INDEXED ON MAP

Logansville

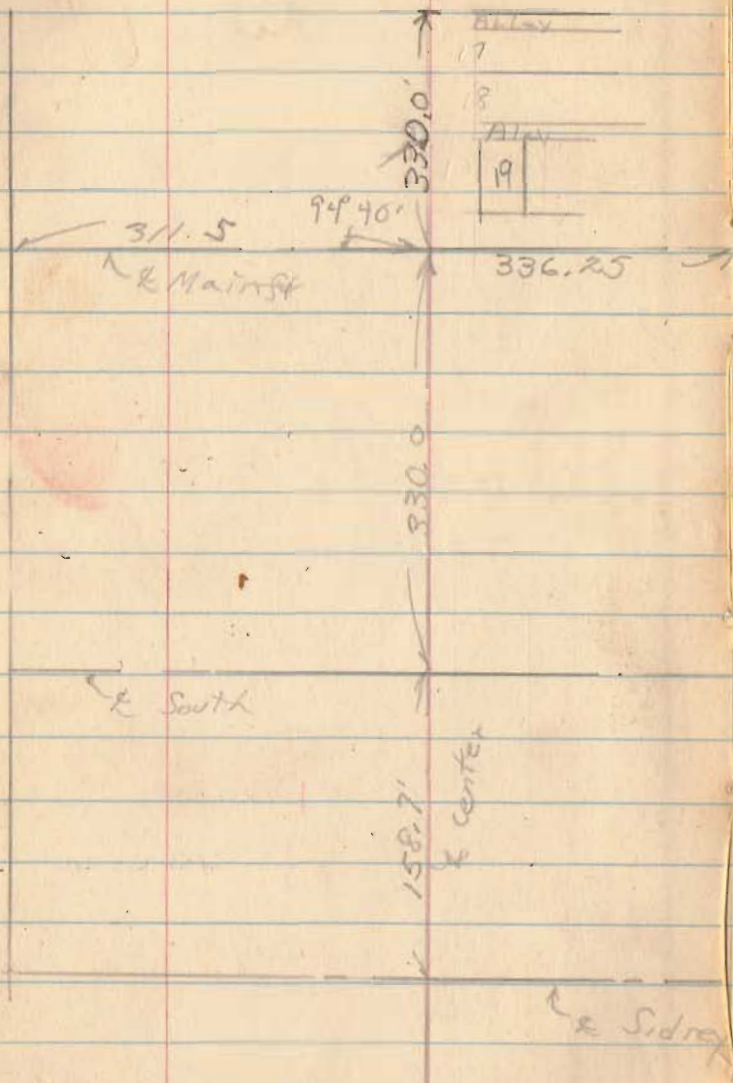
Sep 1, 53

72

158.7

330

488.7



64.57

INDEXED ON MAP

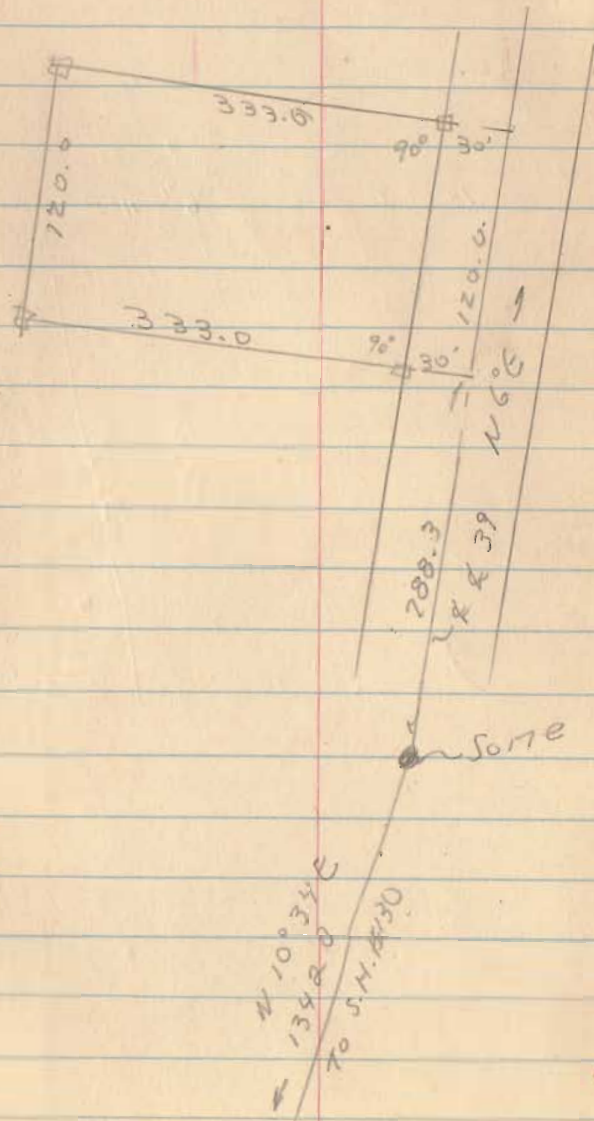
James L. Penrod
McArthur Twp
O.V.M.S. 10367

See County Engr.
F.B. 358

3079

Dec, 50

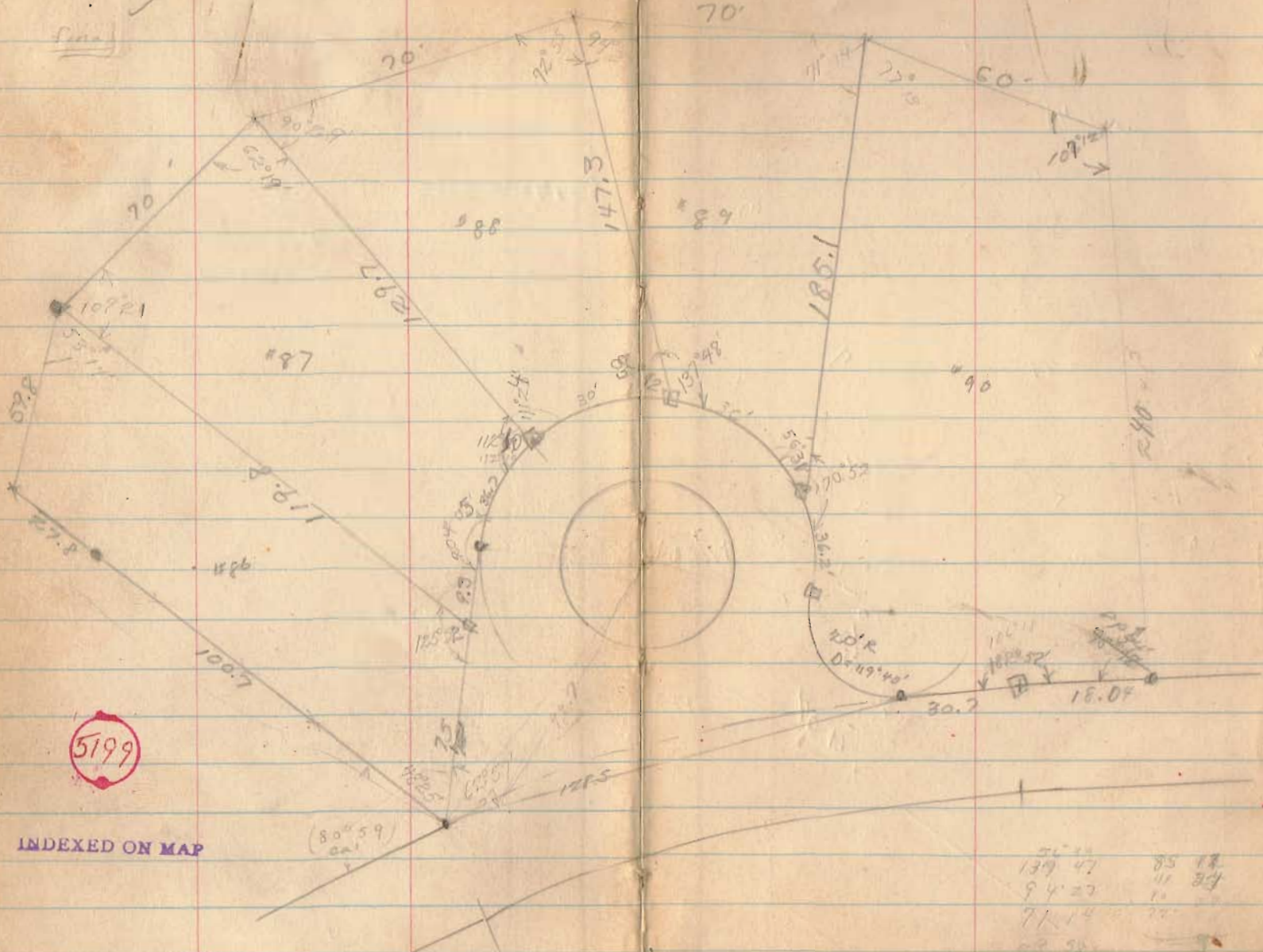
73



Johnson
Survey

Plan

75



5199

INDEXED ON MAP

76.14	85.17
139.47	71.58
94.27	11.34
71.14	77.00
58.55	5.00
	0.00