

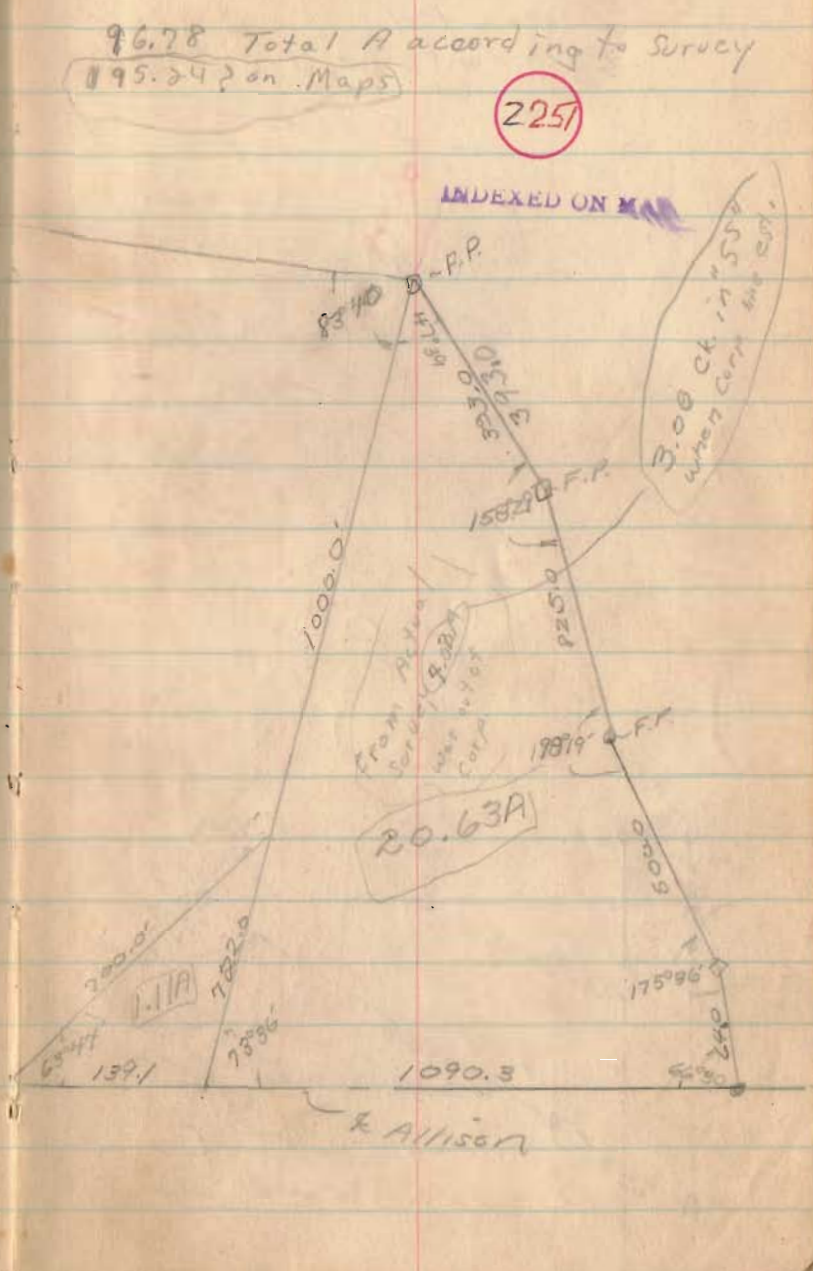
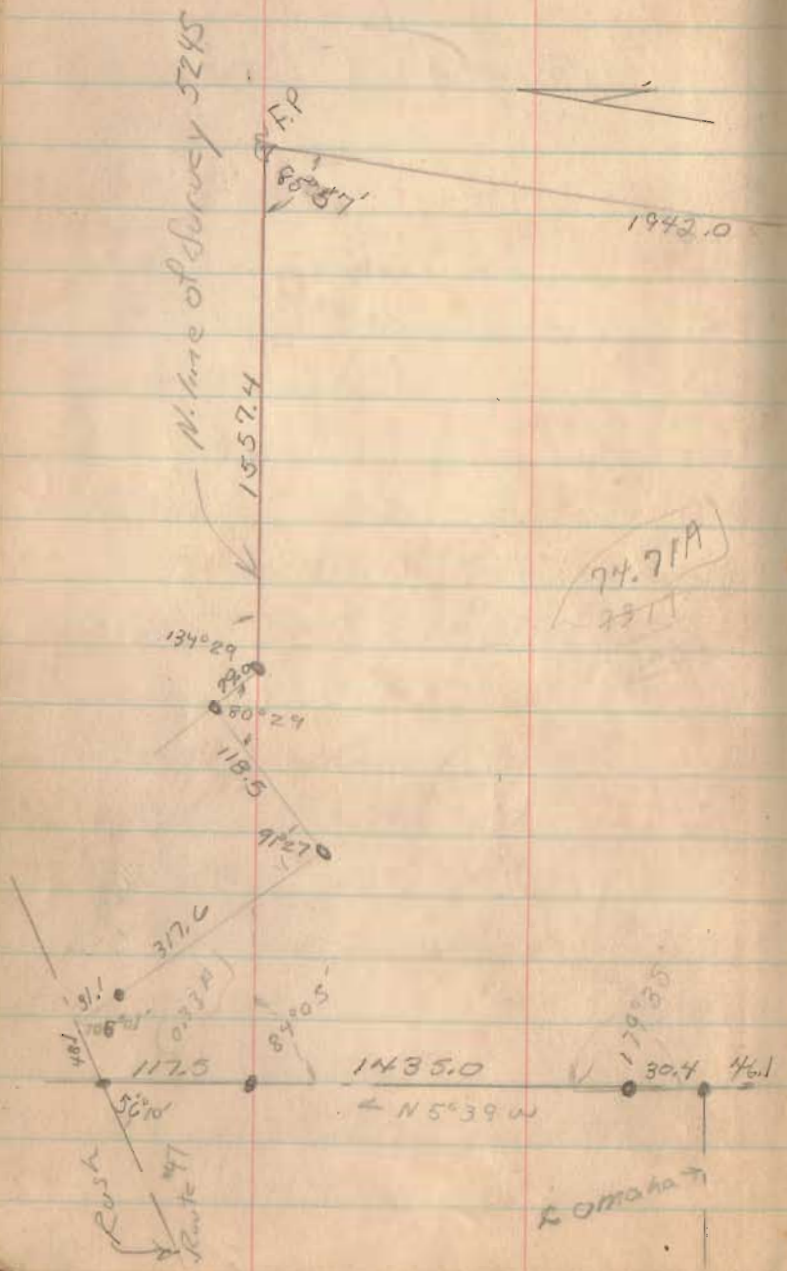
Milligan Survey

Nov. 28, 29, 52

1

96.78 Total A according to Survey
 195.24 on Maps

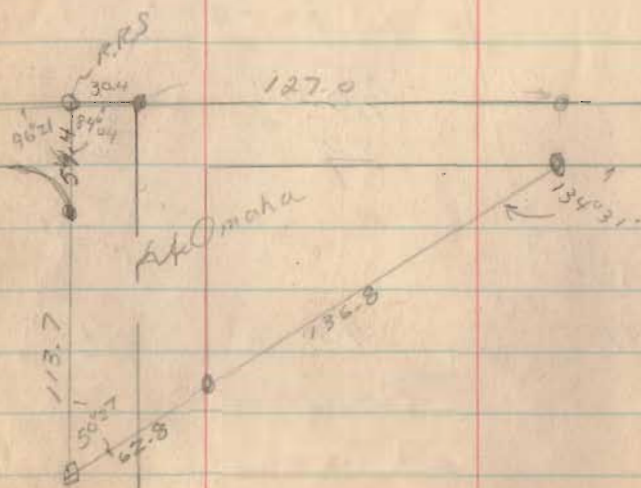
2257



R. Allison

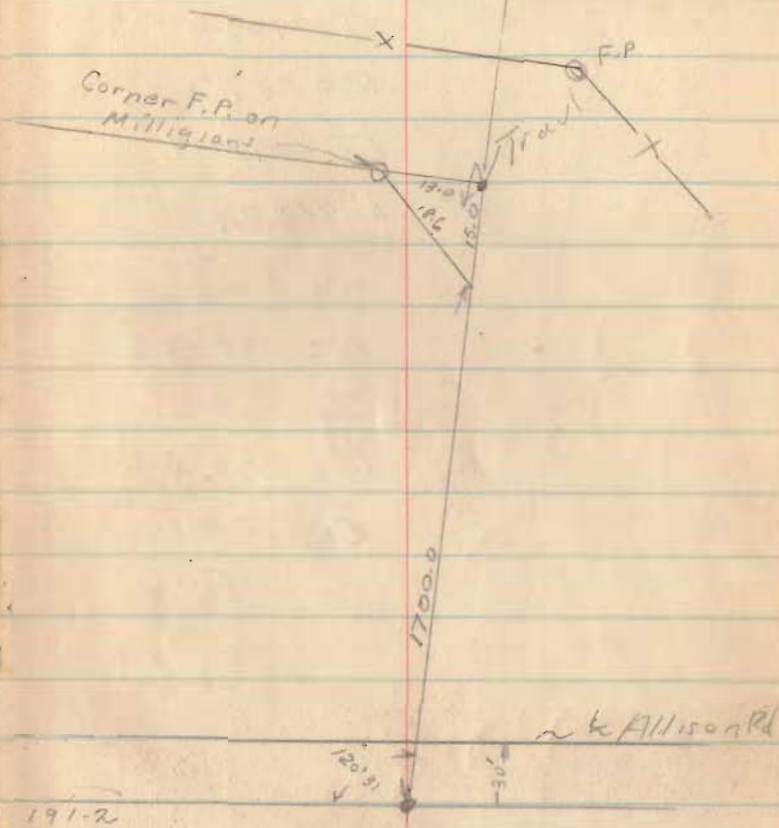
Corporation Line
 Extension
 Allison Rd
 Bellefontaine, O

78.24A to
 Conform with City Maps



Nov 13, 54

2



6256

INDEXED ON MAP

Milligan To Sch. Rd

Jan, 55 3

$$\Delta = 38^{\circ}12'$$

$$T = 100.0$$

$$R = 287.2$$

$$D^{\circ} = 20^{\circ}04'$$

$$L = 190.4$$

$$\Delta = 44^{\circ}36'$$

$$T = 100.0$$

$$R = 243.8$$

$$\Delta = 23^{\circ}40'$$

$$L = 188.4$$

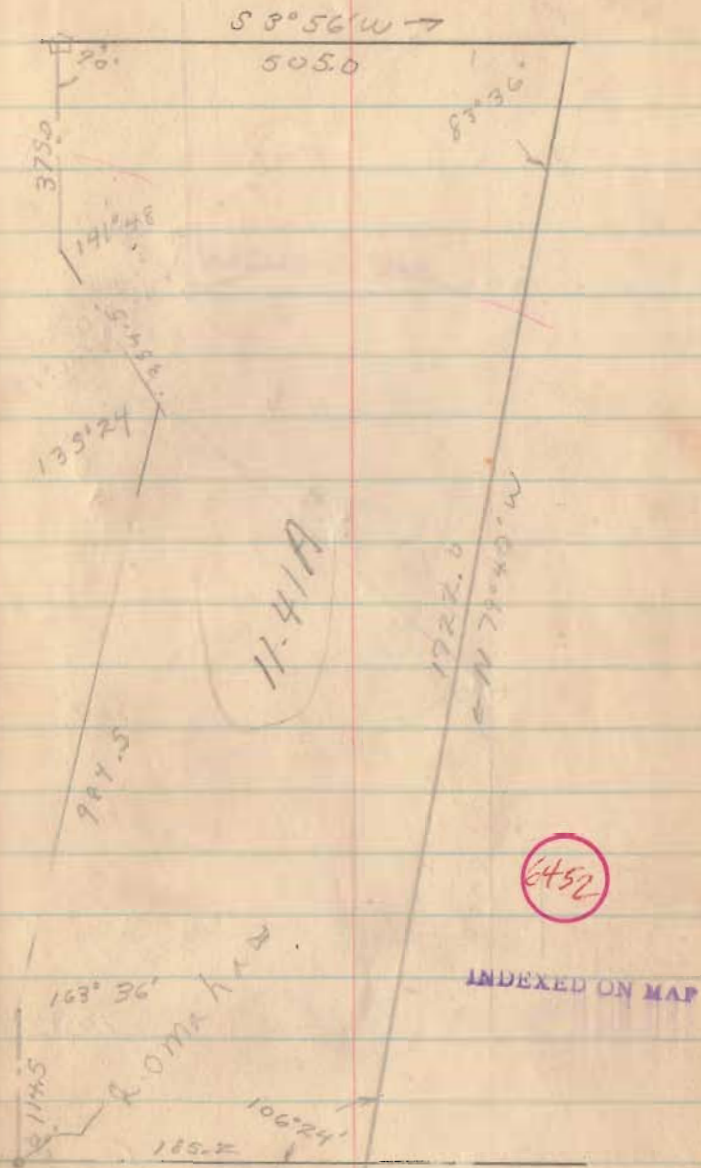
$$\Delta = 16^{\circ}24'$$

$$T = 84.5$$

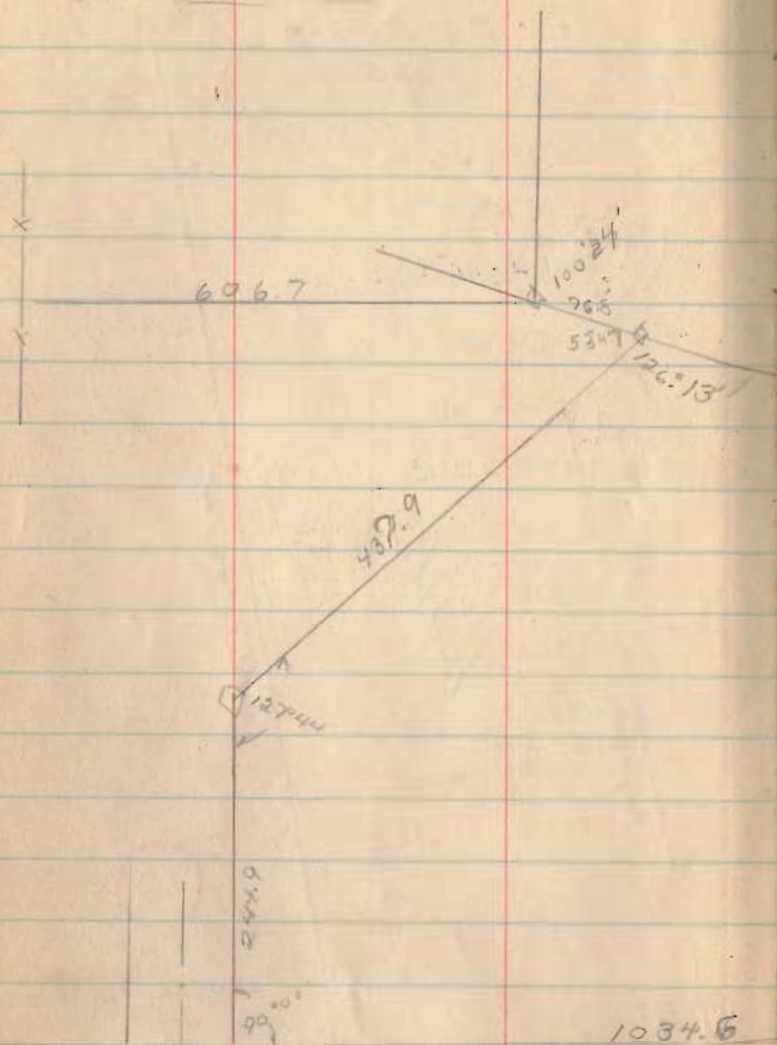
$$R = 583.4$$

$$D^{\circ} = 9^{\circ}47'$$

$$L = 167.6$$

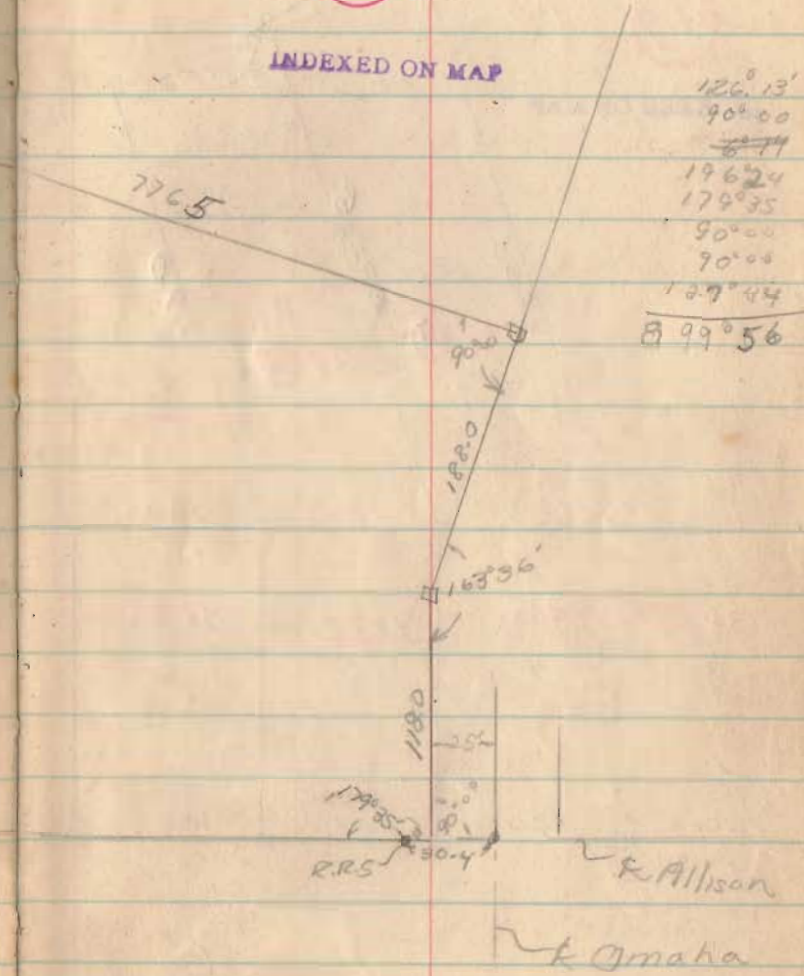


Basic Traverse
for Belle Airo



3419

INDEXED ON MAP



$126^{\circ}13'$
 $90^{\circ}00'$
 6.77
 196.24
 $179^{\circ}35'$
 $90^{\circ}00'$
 $90^{\circ}00'$
 127.44

 $899^{\circ}56'$

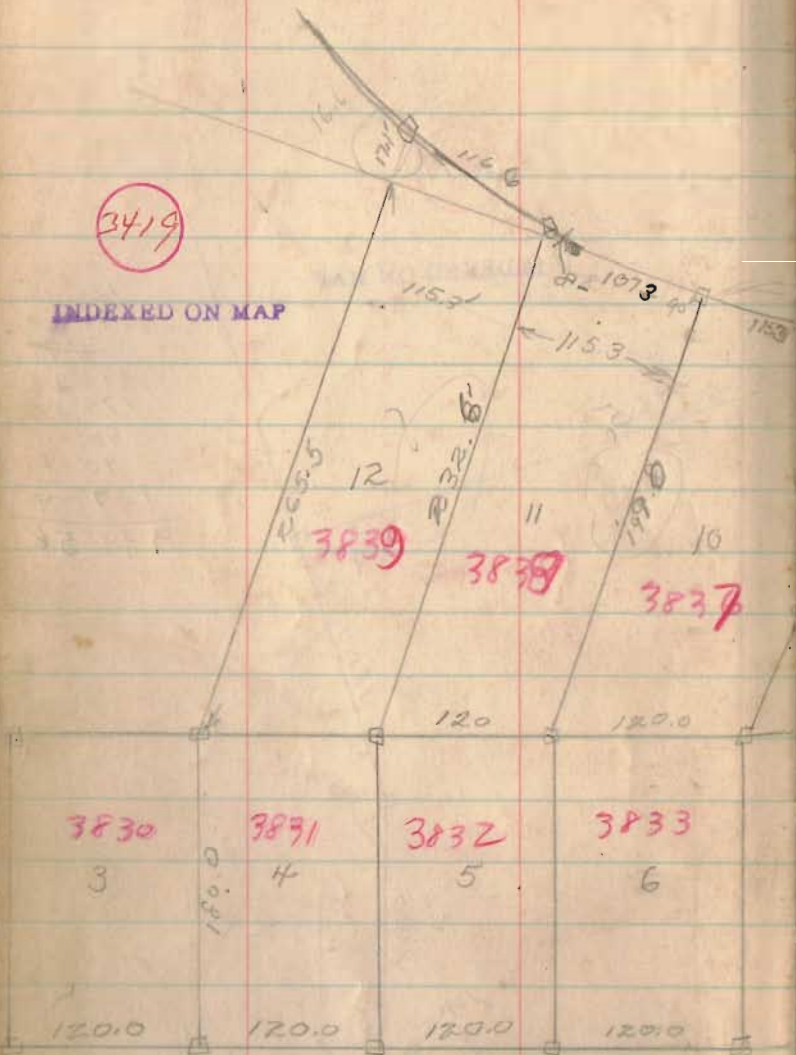
Belle Aire

Mar 4 April 1955

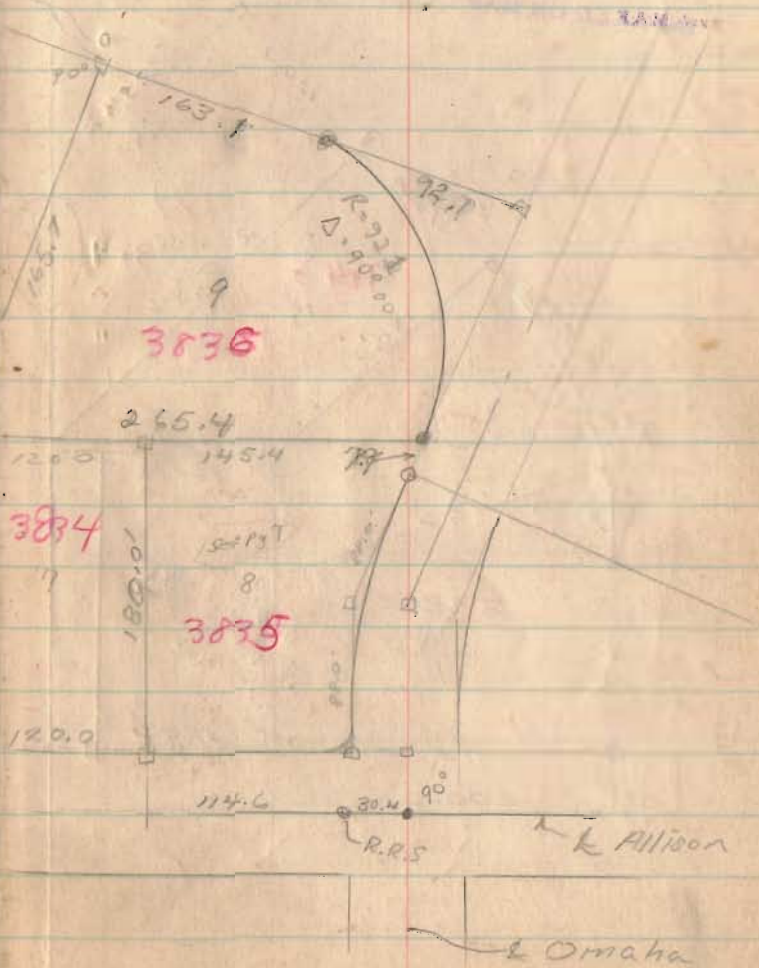
5

3419

INDEXED ON MAP



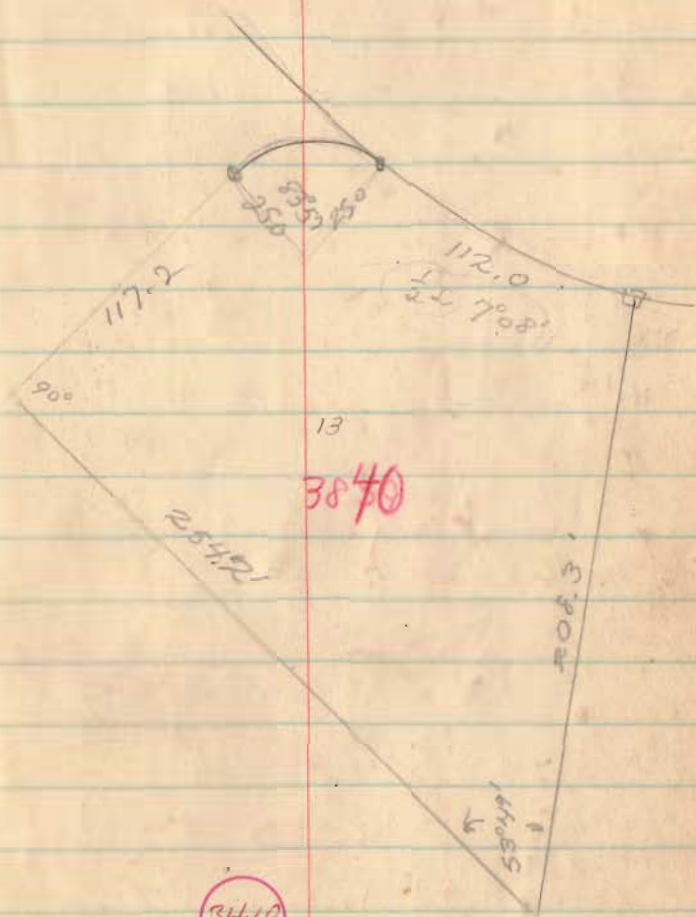
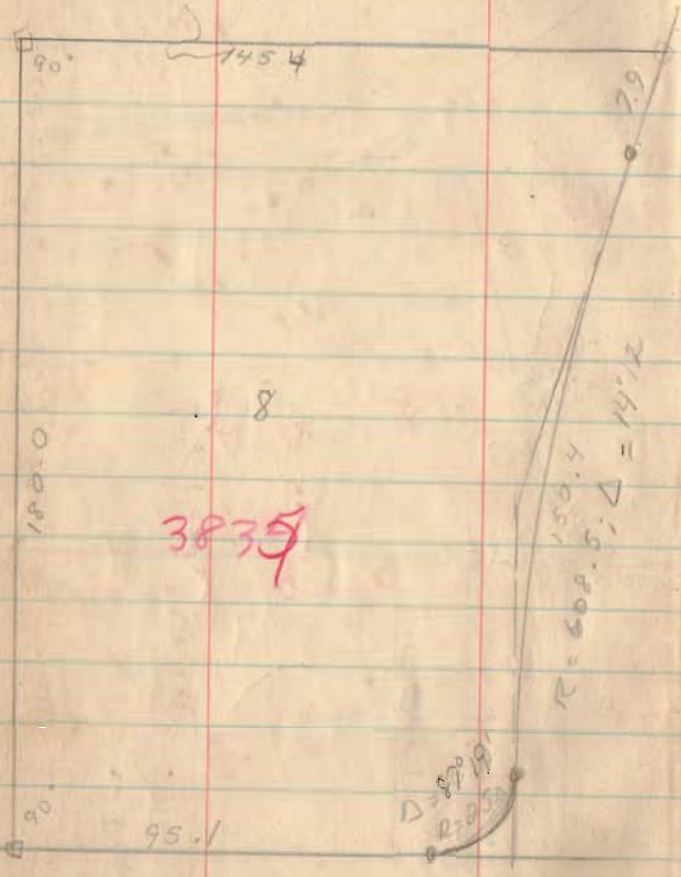
Chart



L Allison

L Omaha

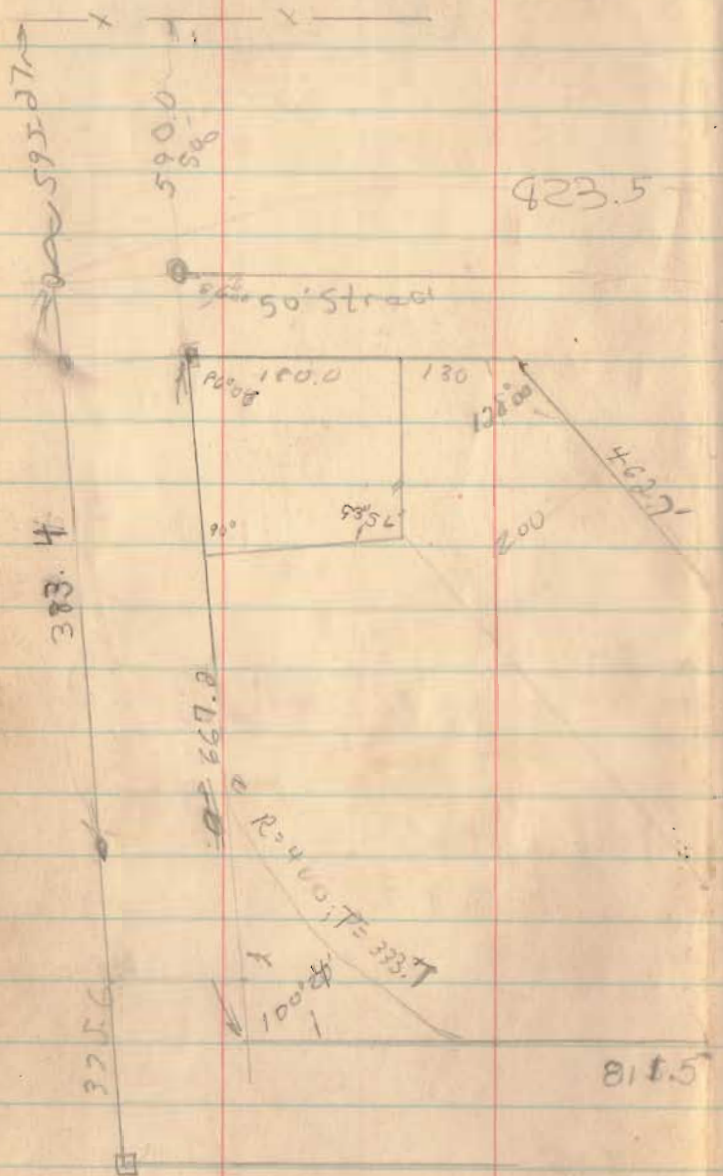
Belle Aire
Addition



INDEXED ON MAP

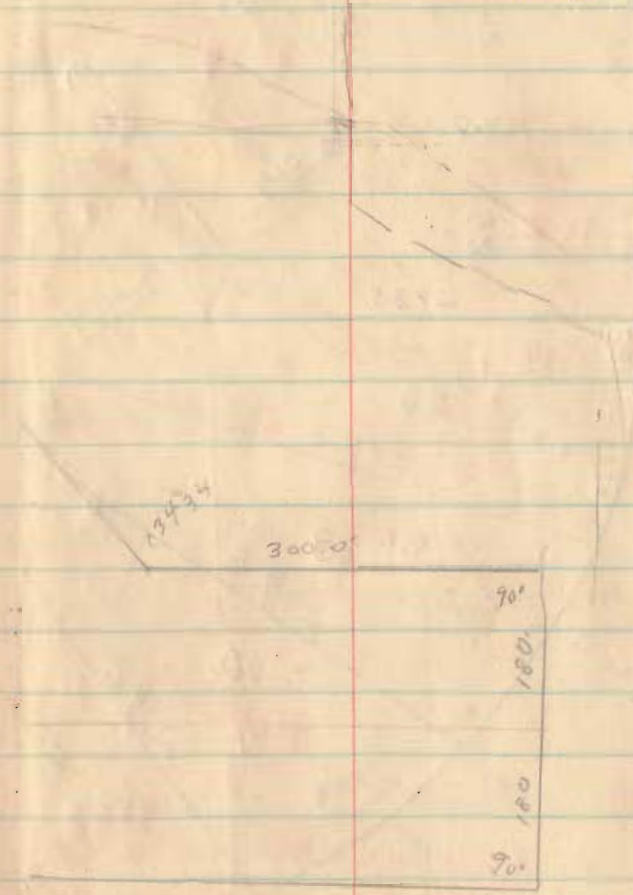
Basic for Belle Air 39

May, 55



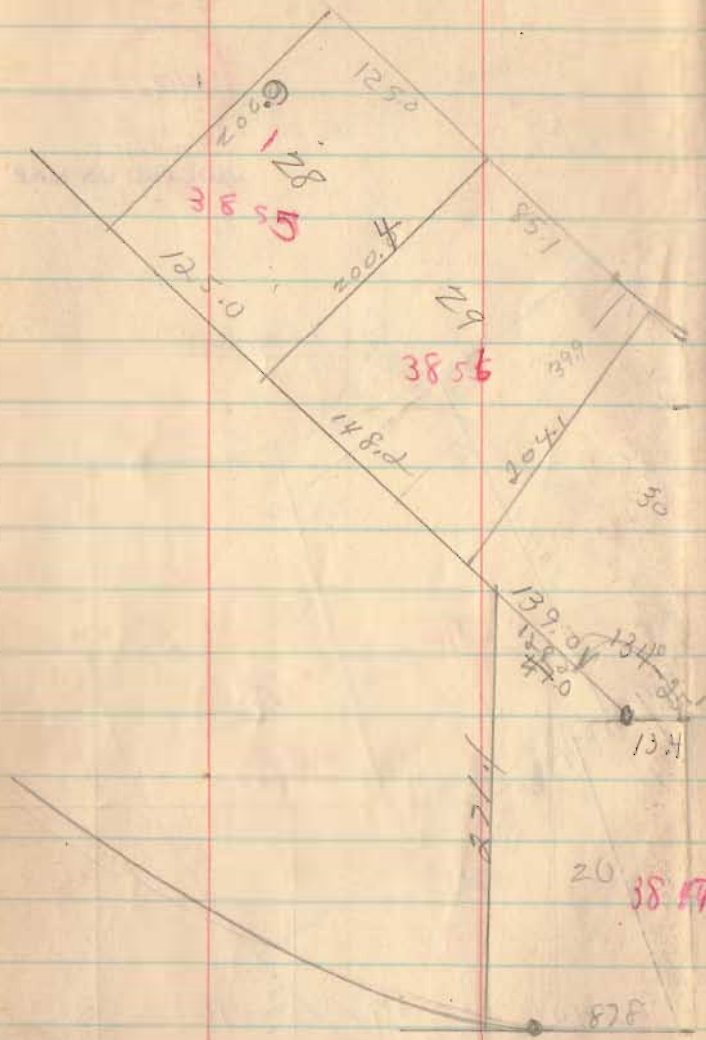
3420

INDEXED ON MAP



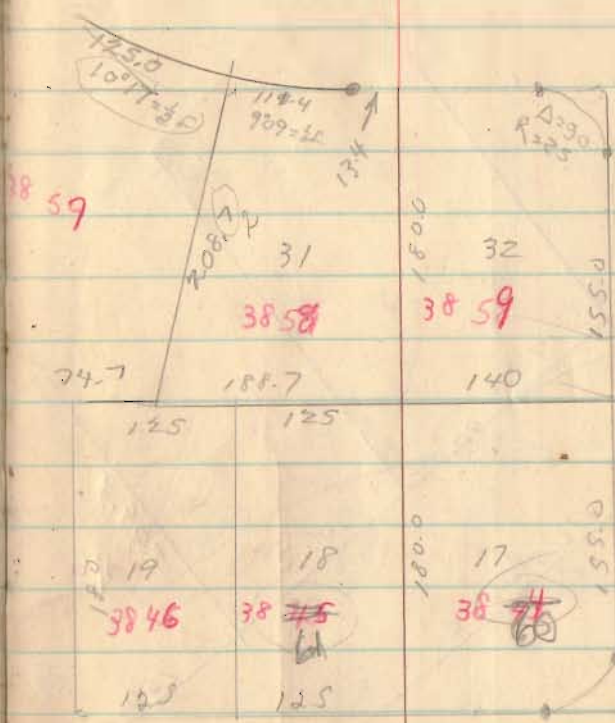
Belle Air 2 cont

11



3420

INDEXED ON MAP



3421

INDEXED ON MAP

 $\Delta = 46^{\circ}22'$

42

41

120.0

783

724

410.0

590.1

200.0

 $25^{\circ}14'51''$

200.

R = 390.5

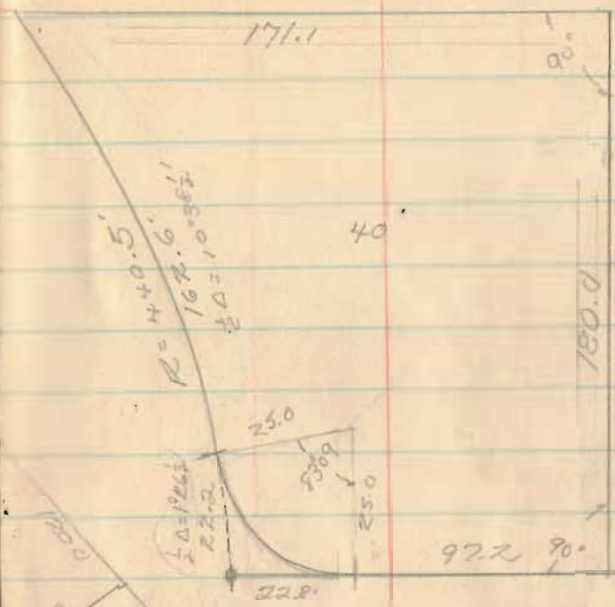
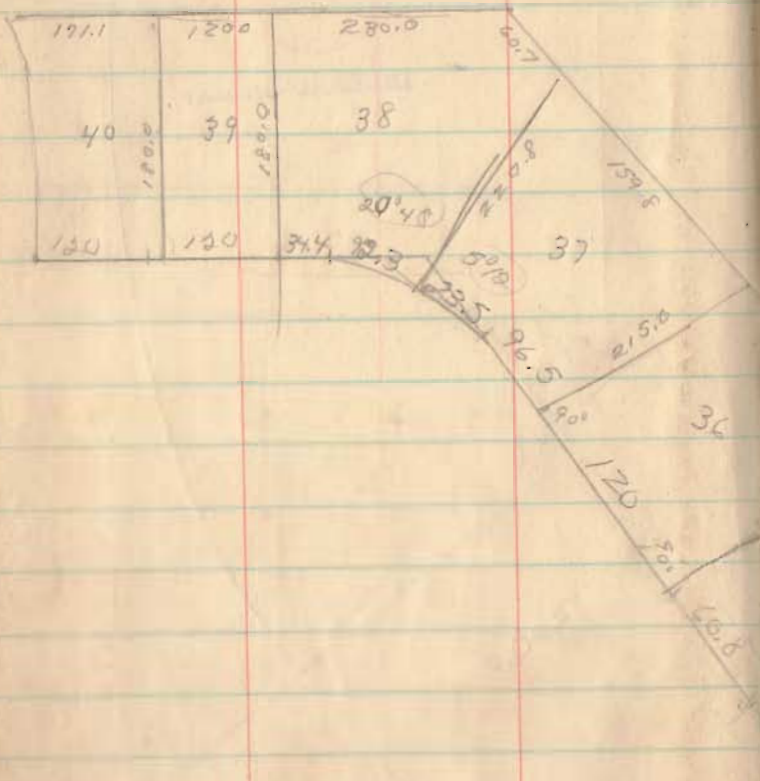
 $\Delta = 86^{\circ}02'$

T = 364.6

240.8

411.3

131242



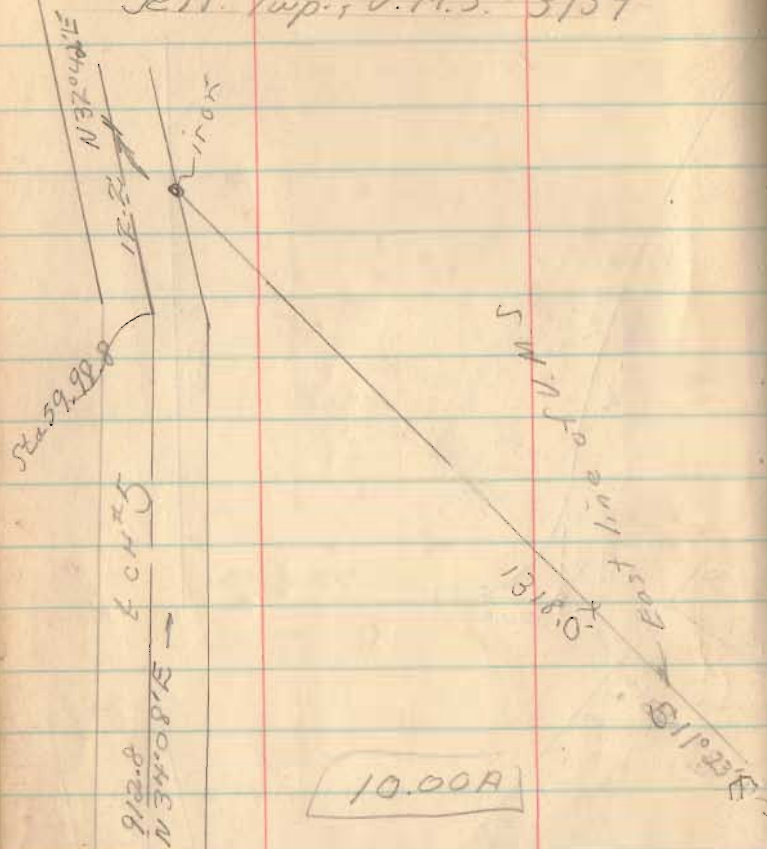
3421

INDEXED ON MAP

Knouton

Omaha

Ernest R. Klingelhofer
Jeff. Twp., U.M.S. 3/39



N 56° 22' W 947.0' T
R.F.P.
Sta 50+86 in Co. Eng
F.B. 579, pg. 39

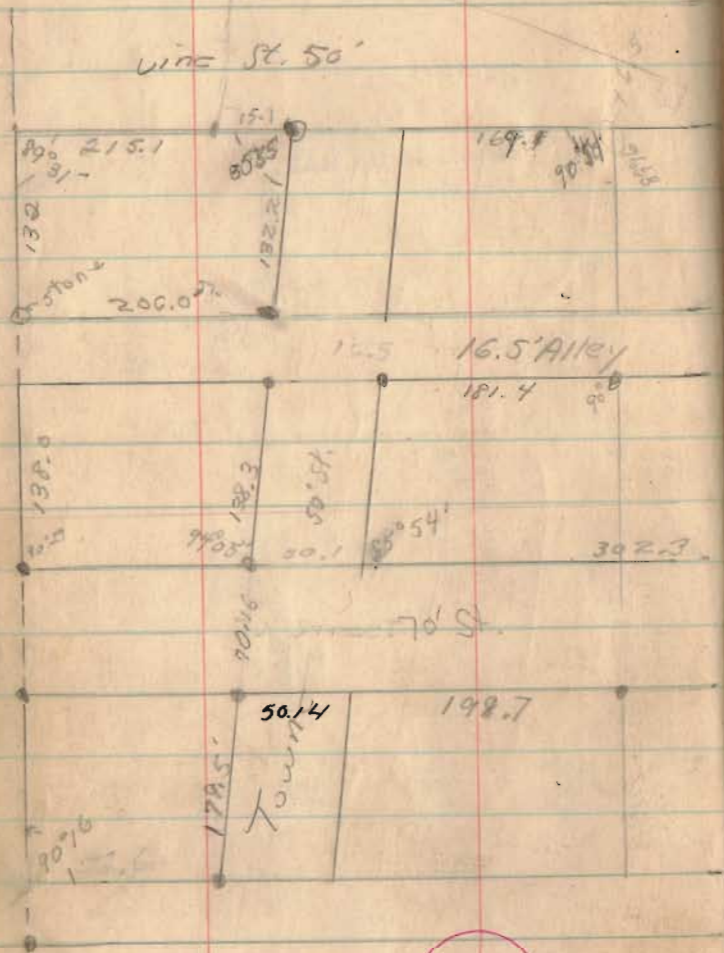
Apr 21, 56

15

2838

INDEXED ON MAP





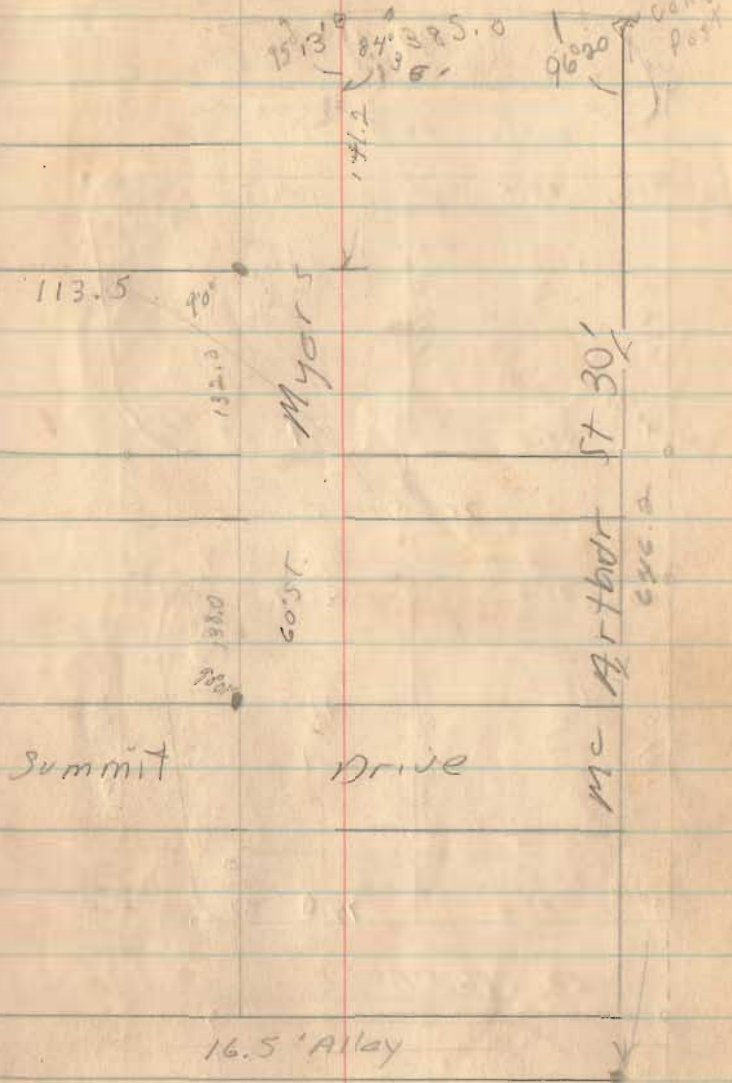
Line St. 50'

6461

INDEXED ON MAP

Dec. 21, 27, 28, 29, 30, 1955
Jan 7

17



1513.0
24.0
87.0°

Myer

60.51

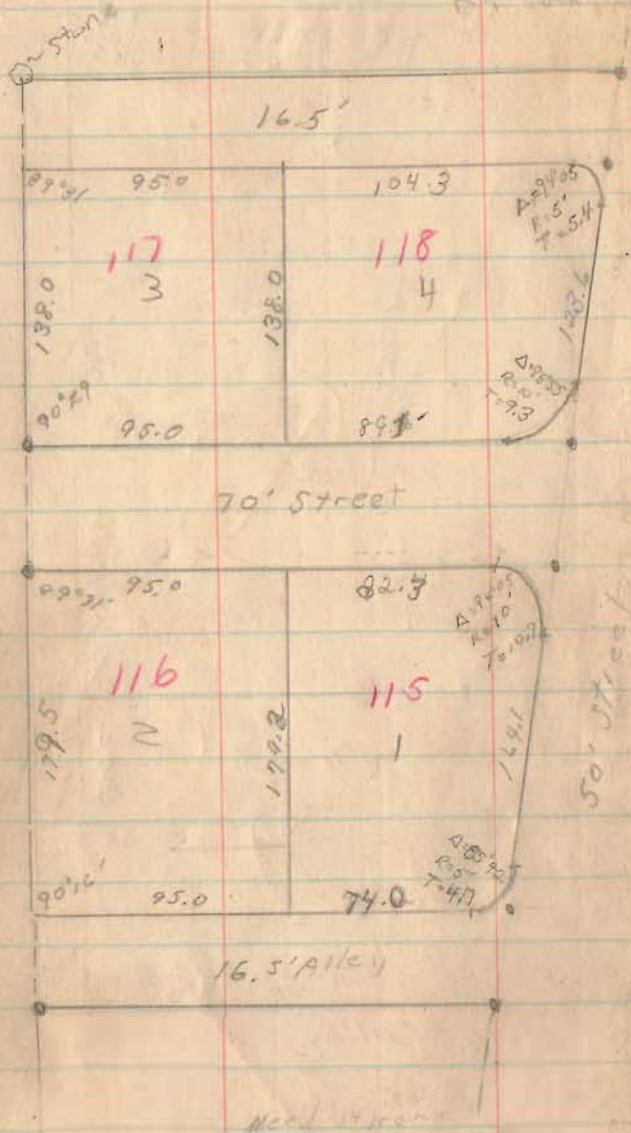
Summit Drive

Drive

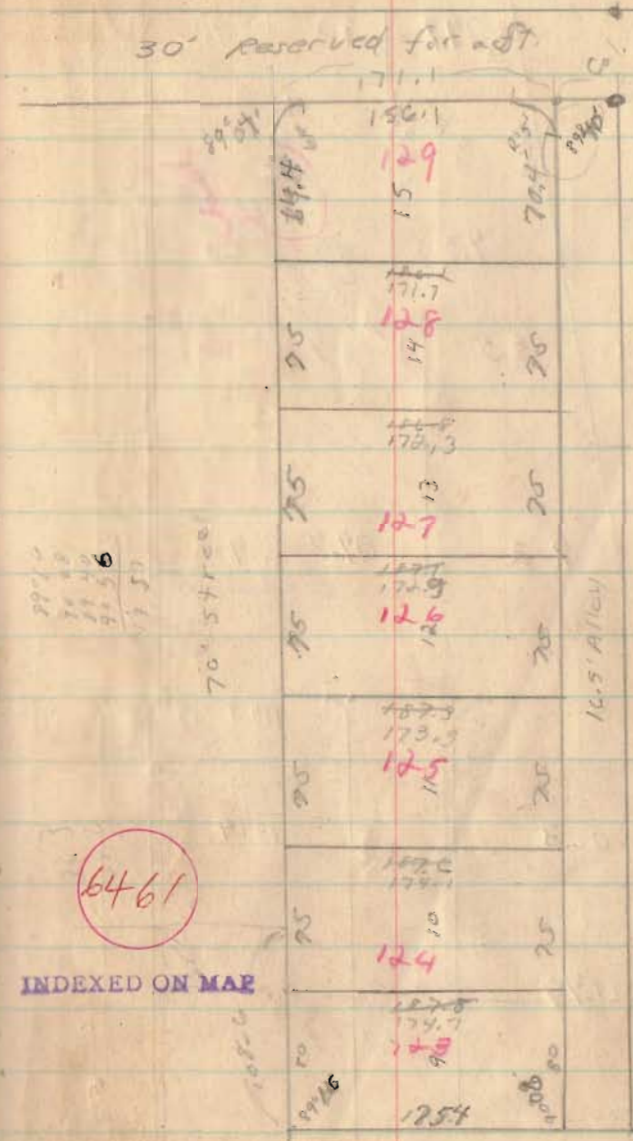
St 30'

Mc Arthur

16.5' Alley

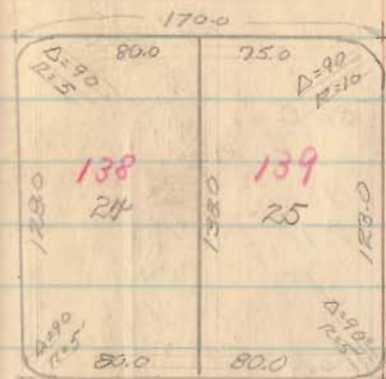
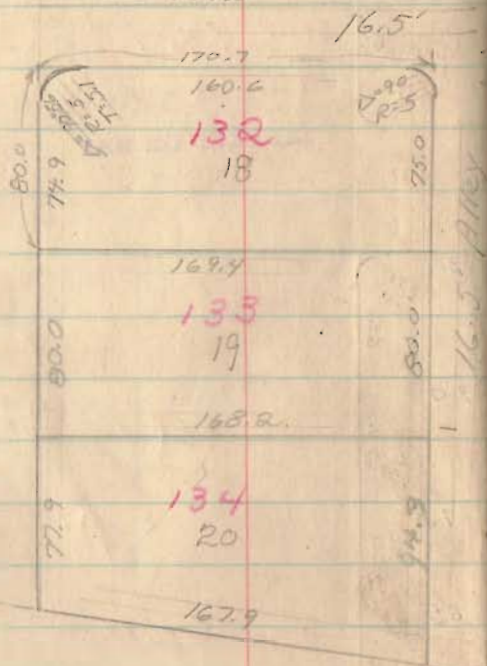
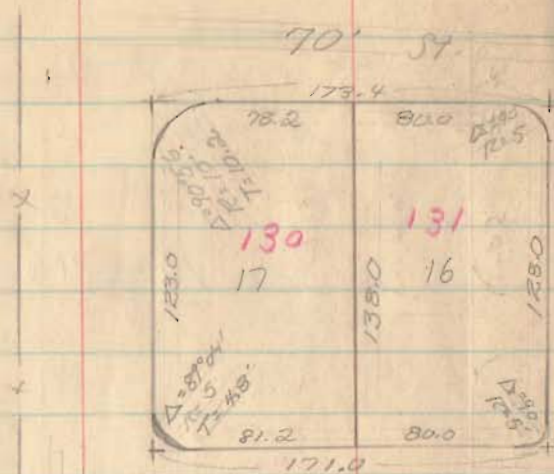


Need 14' front
17

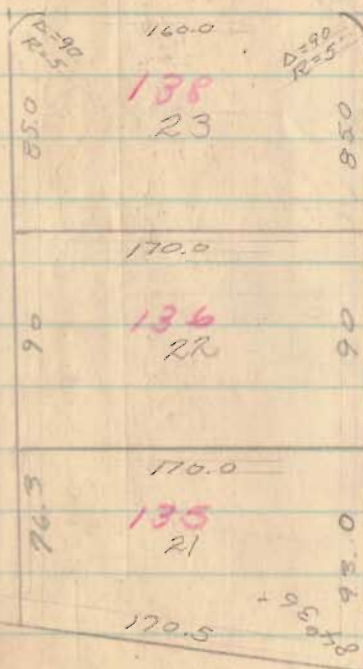


6461

INDEXED ON MAP



Alley



60' ST.

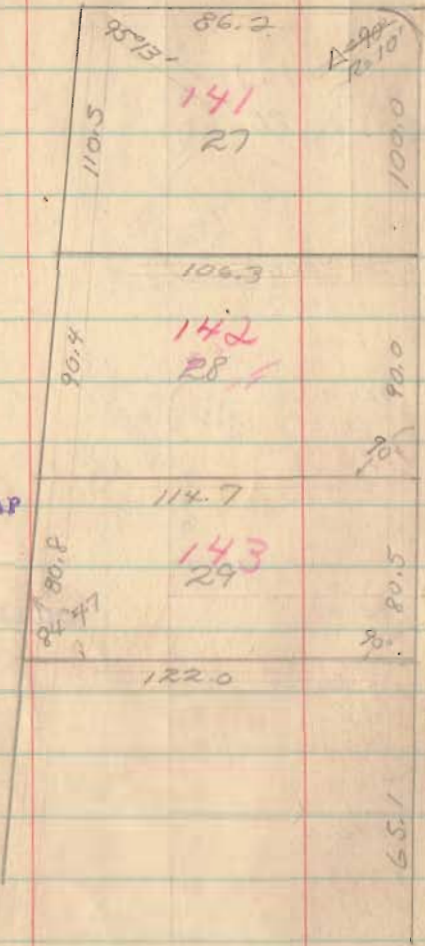
6461

INDEXED ON MAP

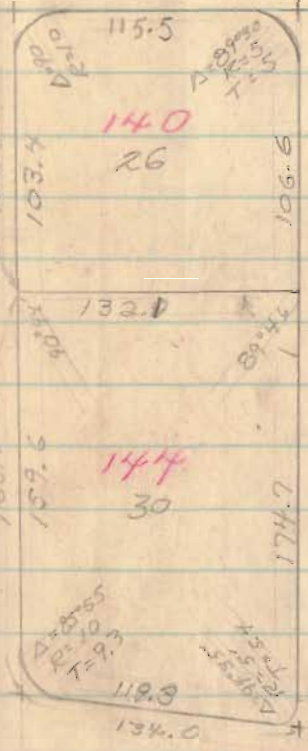
60' ST-

6461

INDEXED ON MAP

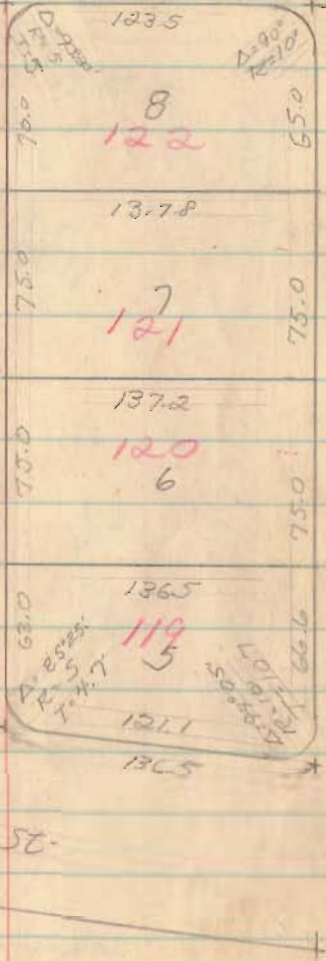


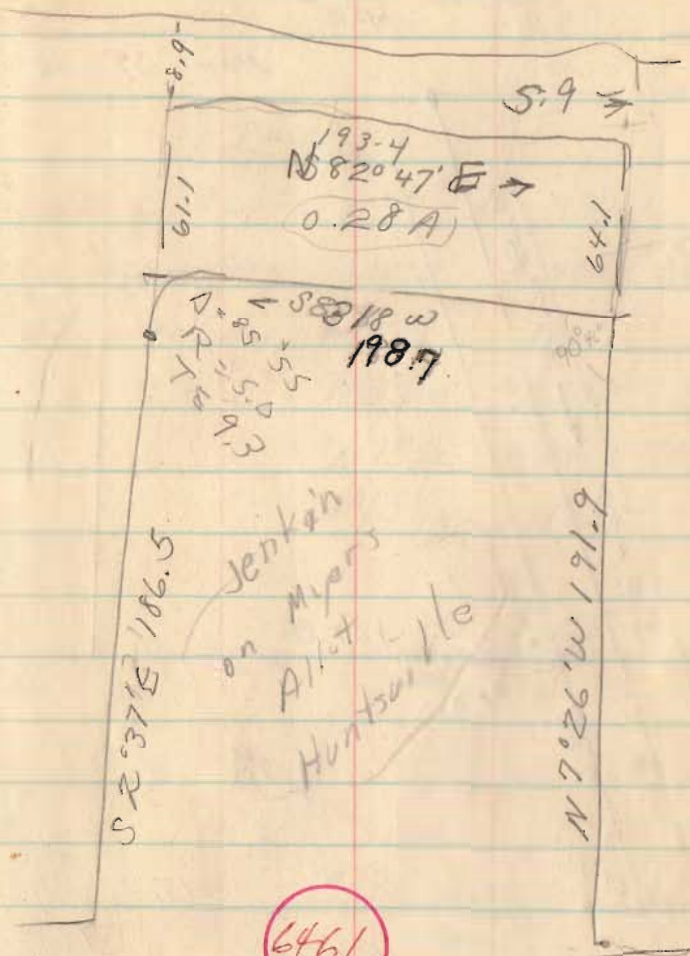
White St 50'



16.5' Alley

50' ST-



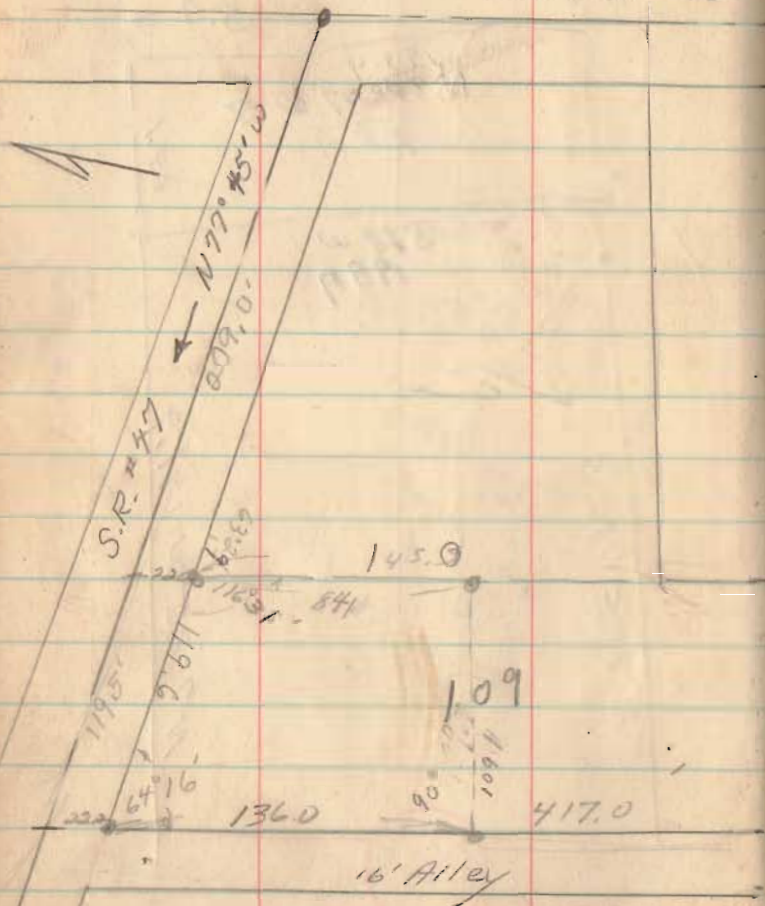


6461

INDEXED ON MAP

Amerine - Herford
 West Mansfield
 Boker Creek Twp
 U.M.S. $\frac{795}{6155}$

Main St 72'



1956

23

248
 145

 393
 22

 415
 6

 121

DEED
 SR 447

With E of Lake N 77 1/4° W 332.6
 E. Line of Alley S 14° E 452.1 to E of Ditch
 with Ditch N 89° E 116.5 to iron
 1 N 13 1/4° W 254.1
 N 75 1/2° E 194.0 to E Main
 N 15 1/4° W 74.4



2784

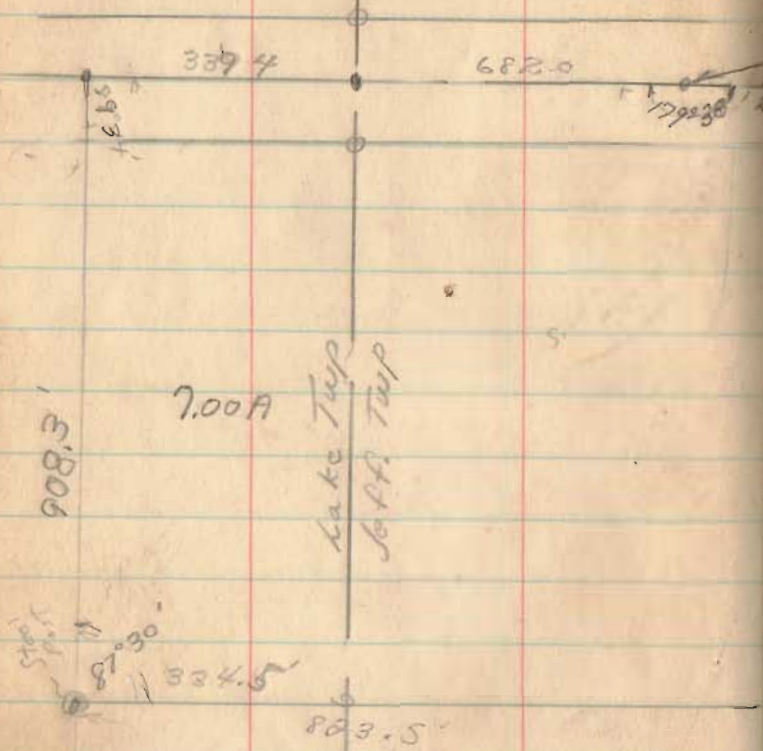
INDEXED ON MAP

McCormick - Switzer

V.M.S 44 98

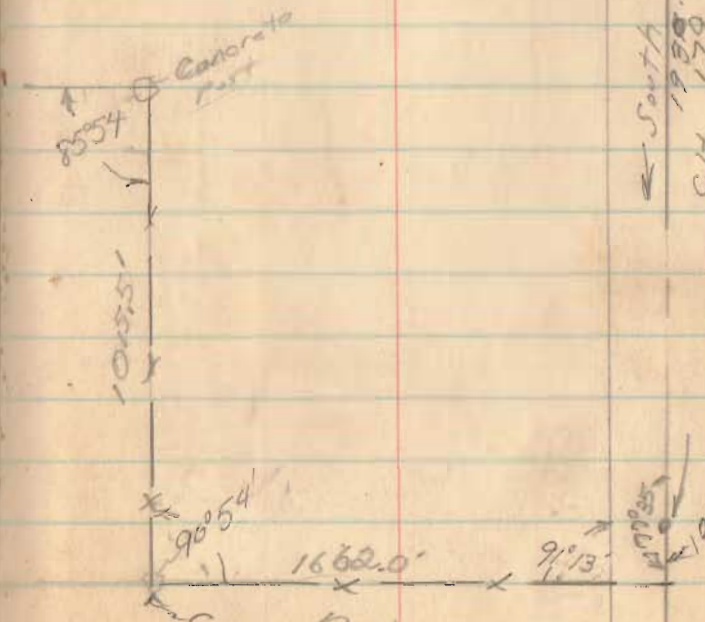
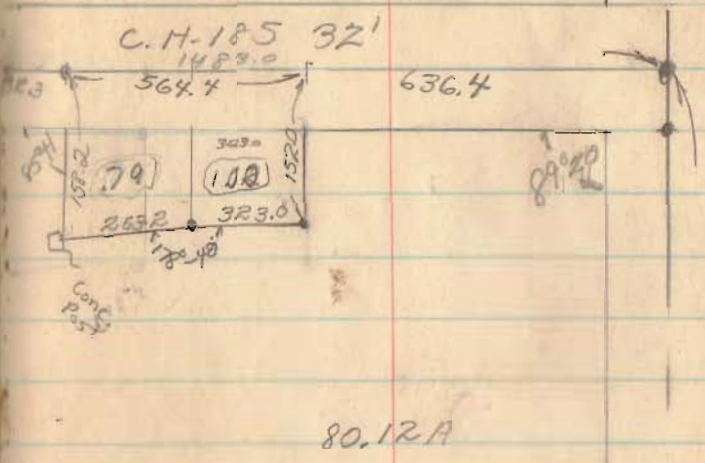
April 56

25



2874

INDEXED ON MAP

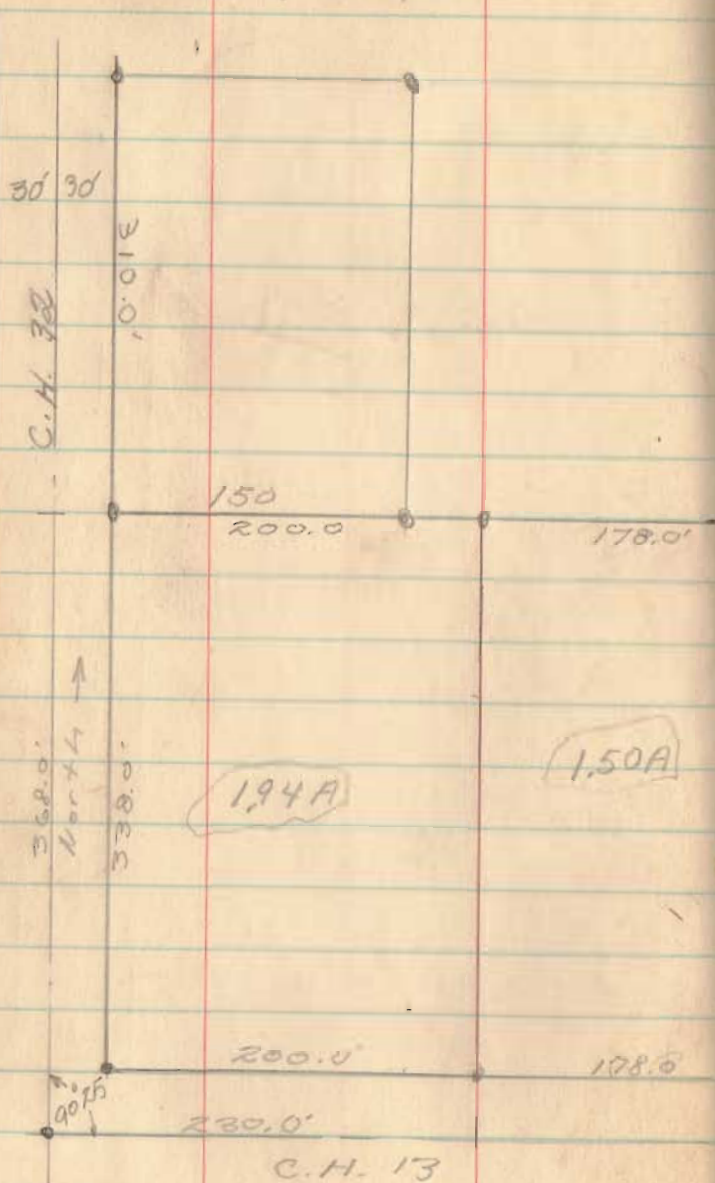


L. Weiser - Harrison Twp.
Sec 6 T-3, R-14

Apr 27, 56

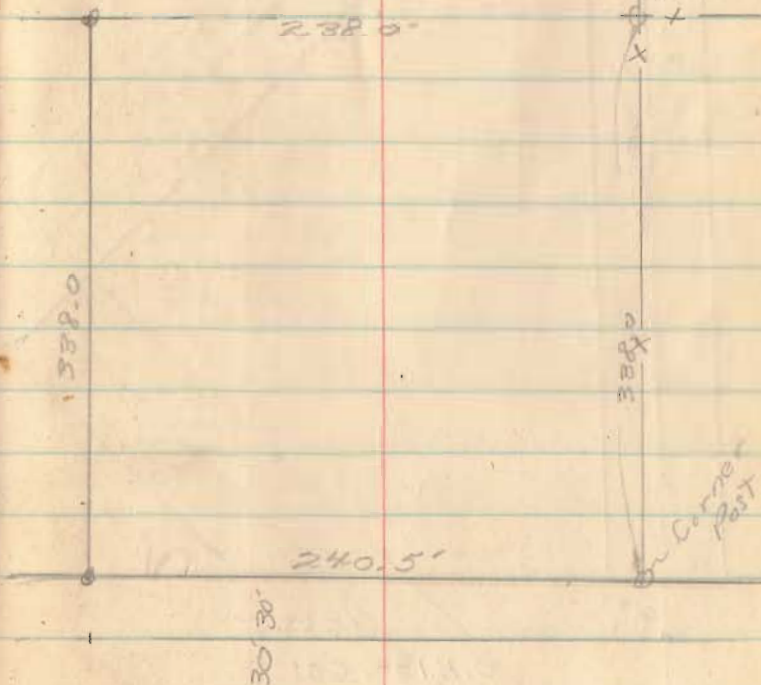
See Next Pg

29



2800

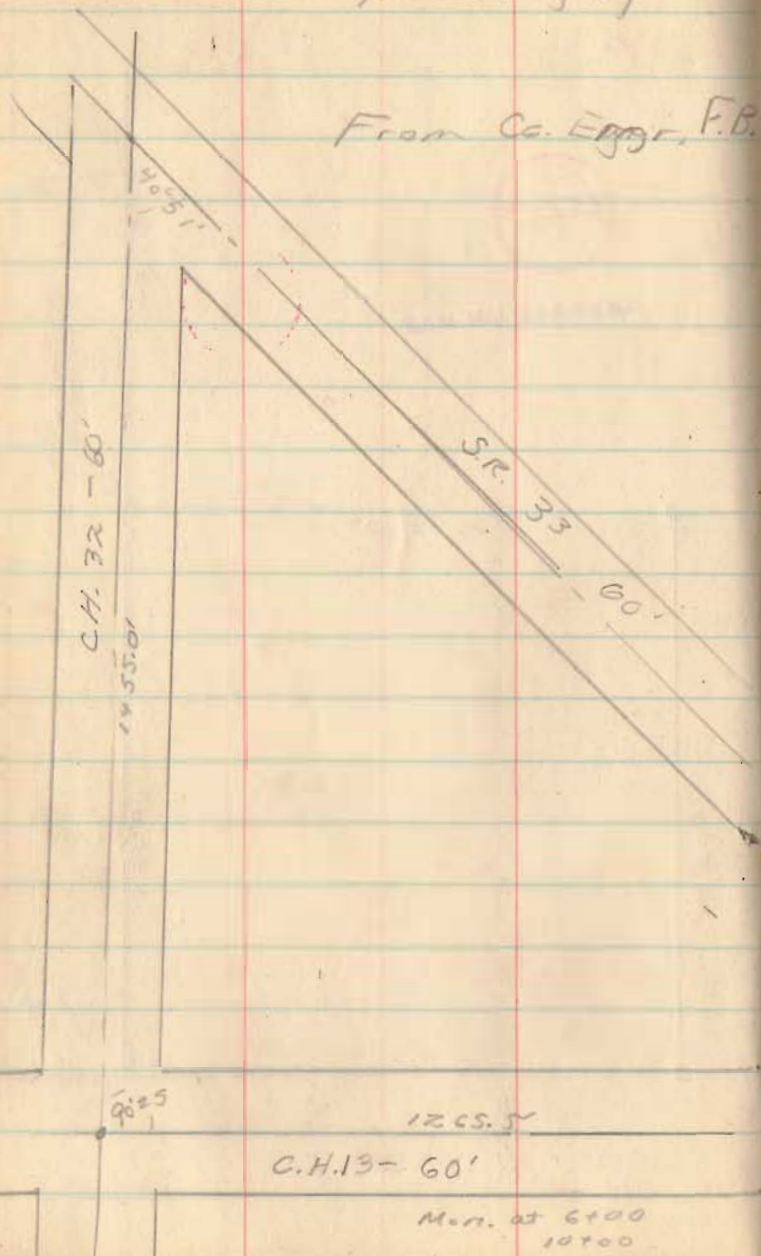
INDEXED ON MAP



For Weiser Survey
from preceding Pg

30

From Co. Egger, F.B.

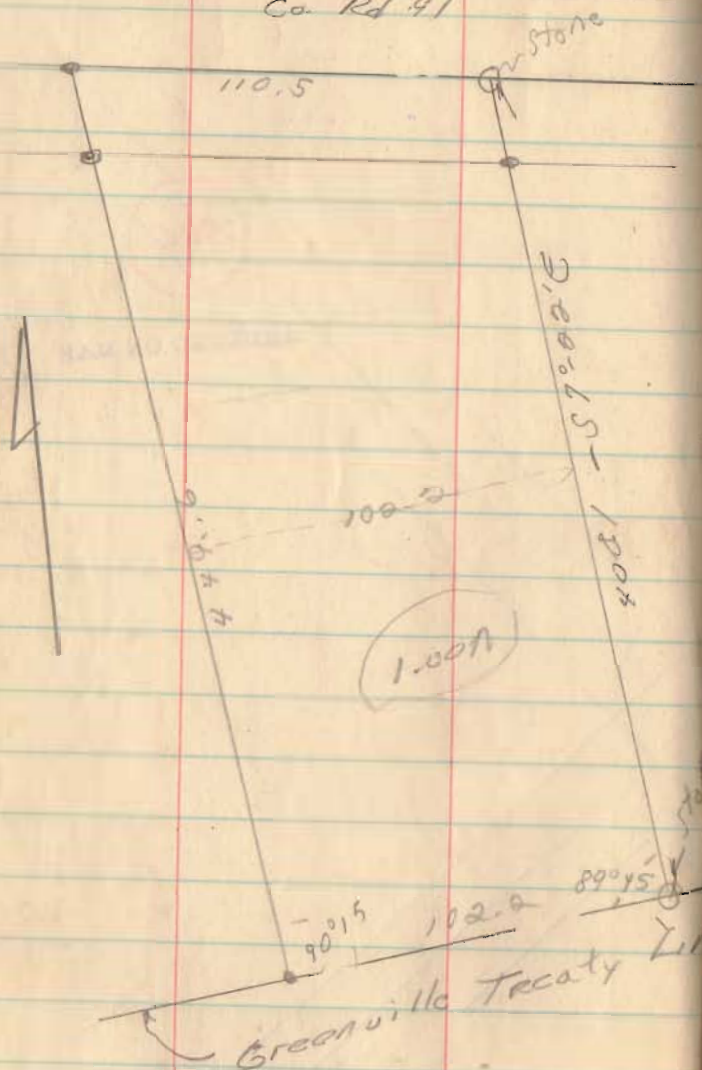


2800

INDEXED ON MAP

McArthur Twp

Co. Rd. 91

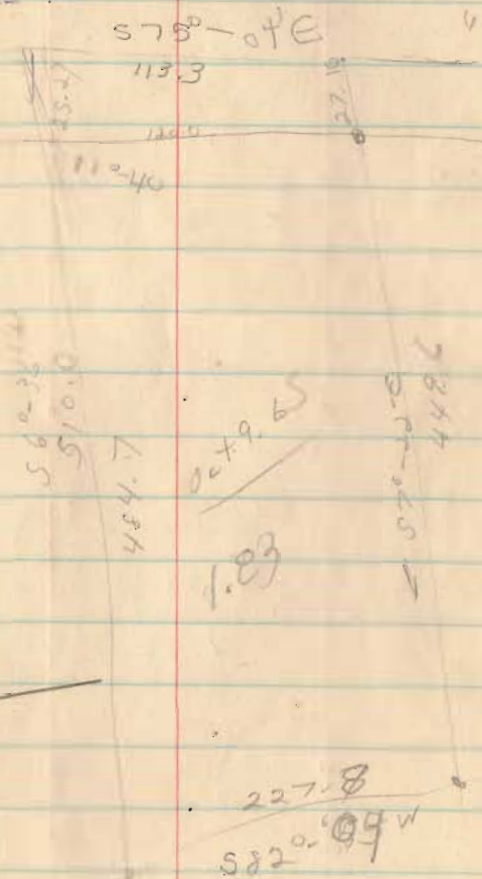


Apr. 30., 66

31

3072

INDEXED ON MAP



449.0
 25.3
 510.0
 71.00
 75.04
 6.56

560.38
 510.0
 484.7
 0.079.65
 1.83
 578.0
 449.0

Jack Ricketts
Rush Creek Tap, V.M.S. 3314

3387

INDEXED ON MAP

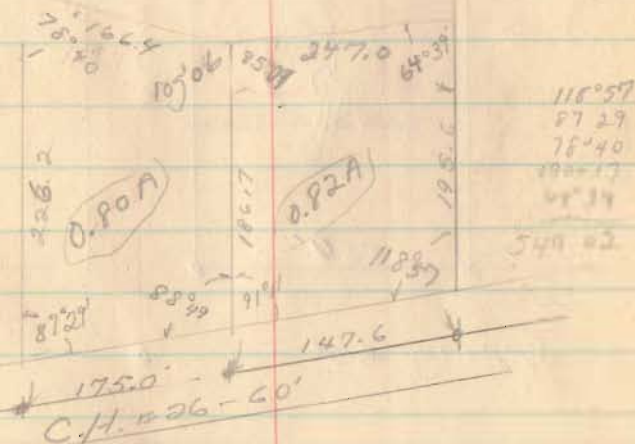
175.0
102.5
134.5
322.4
272.4

to Sycamore
941.0
N 56 1/2° E

May 12, 56

34

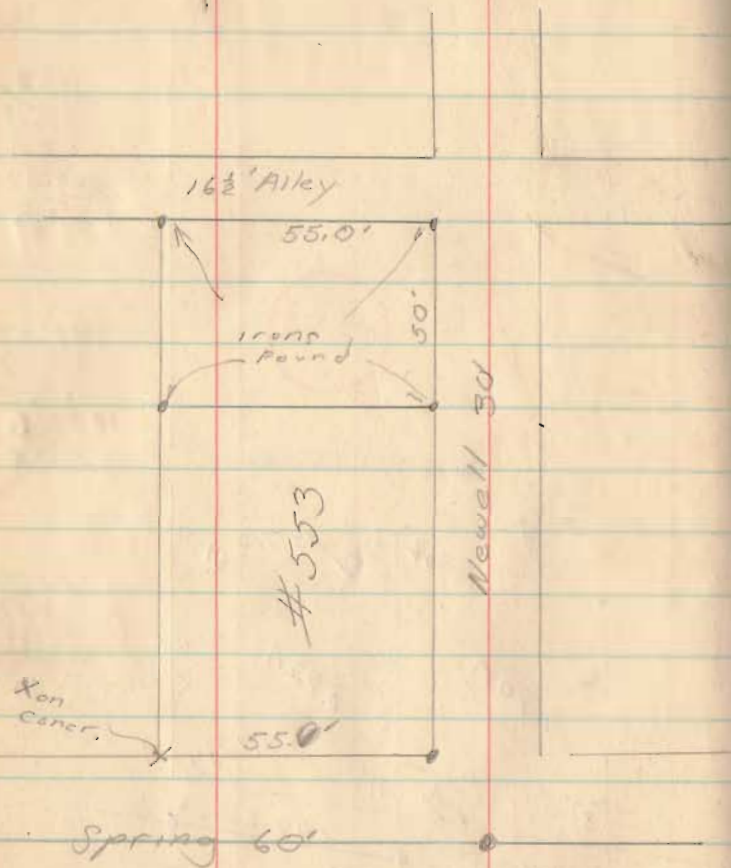
118° 57
91° 11
85° 11
64° 39
159° 58
91° 22
6° 33
88° 49
87° 29
78° 40
105° 06
220° 08



~~Don Zupp~~
~~Bellefontaine, O~~

May 56

35



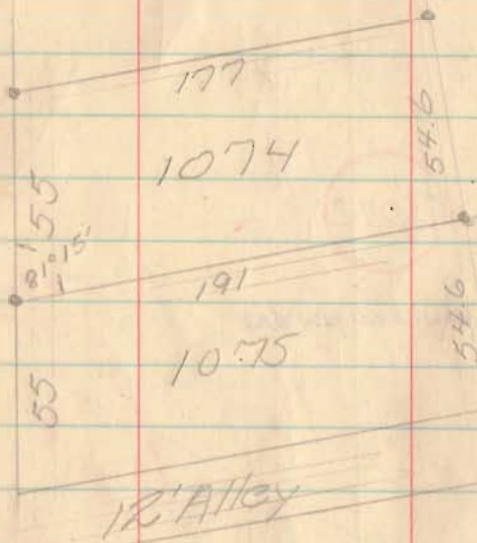
4463

INDEXED ON MAP

Bob Hassel
Cooper St. Bellefontaine

37

Cooper St. 30'



6464

INDEXED ON MAP

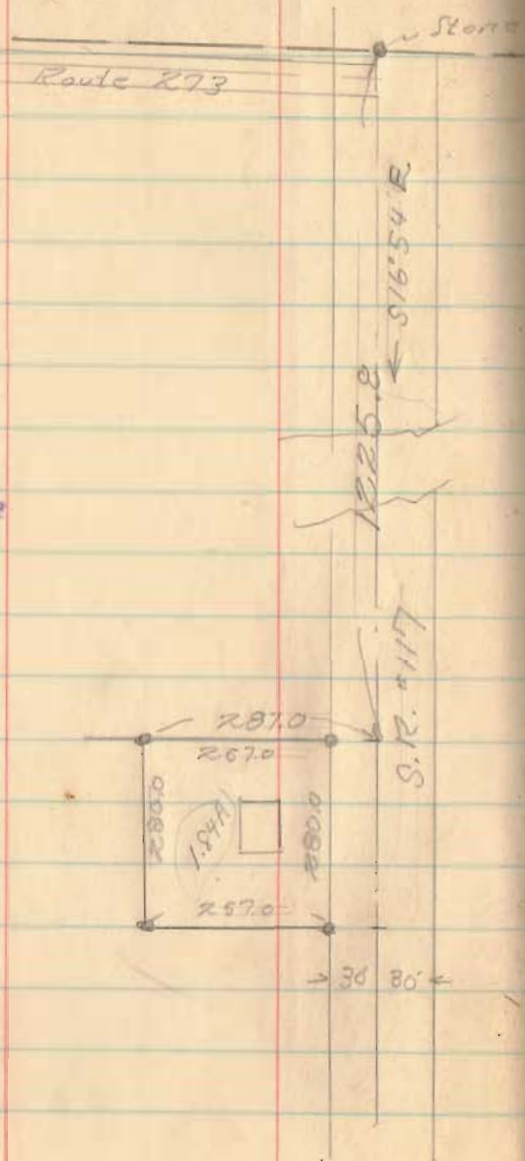
Elder to Carter
 Richland Twp., V.M.S. 10503

June 30, 56

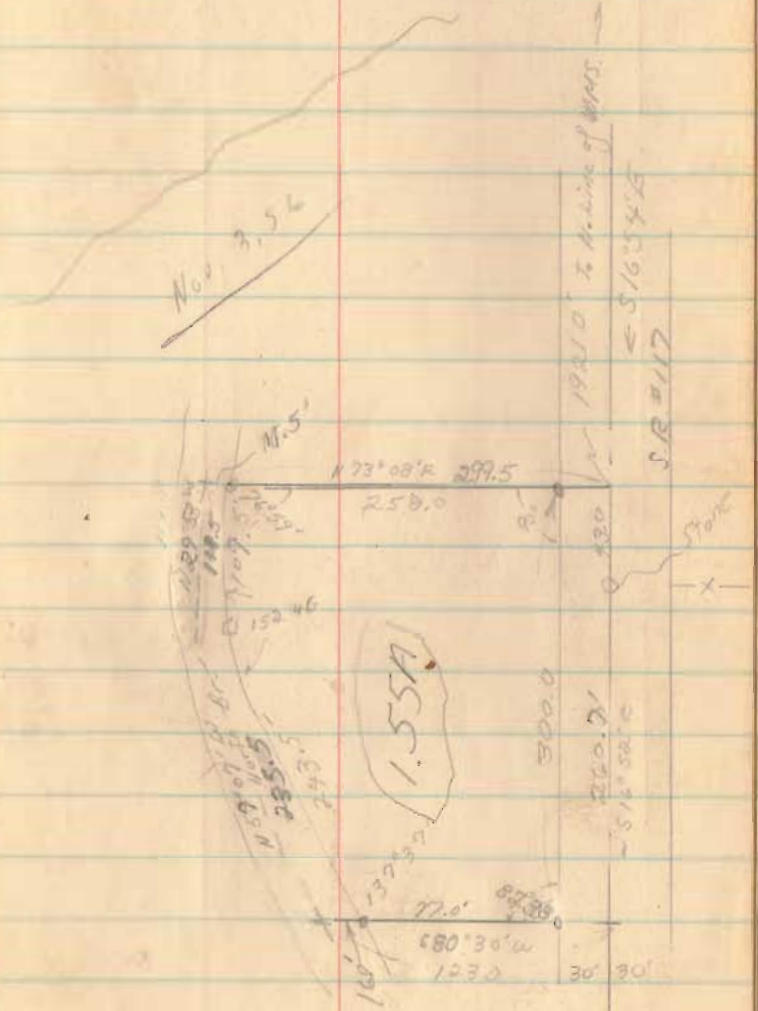
41



INDEXED ON MAP



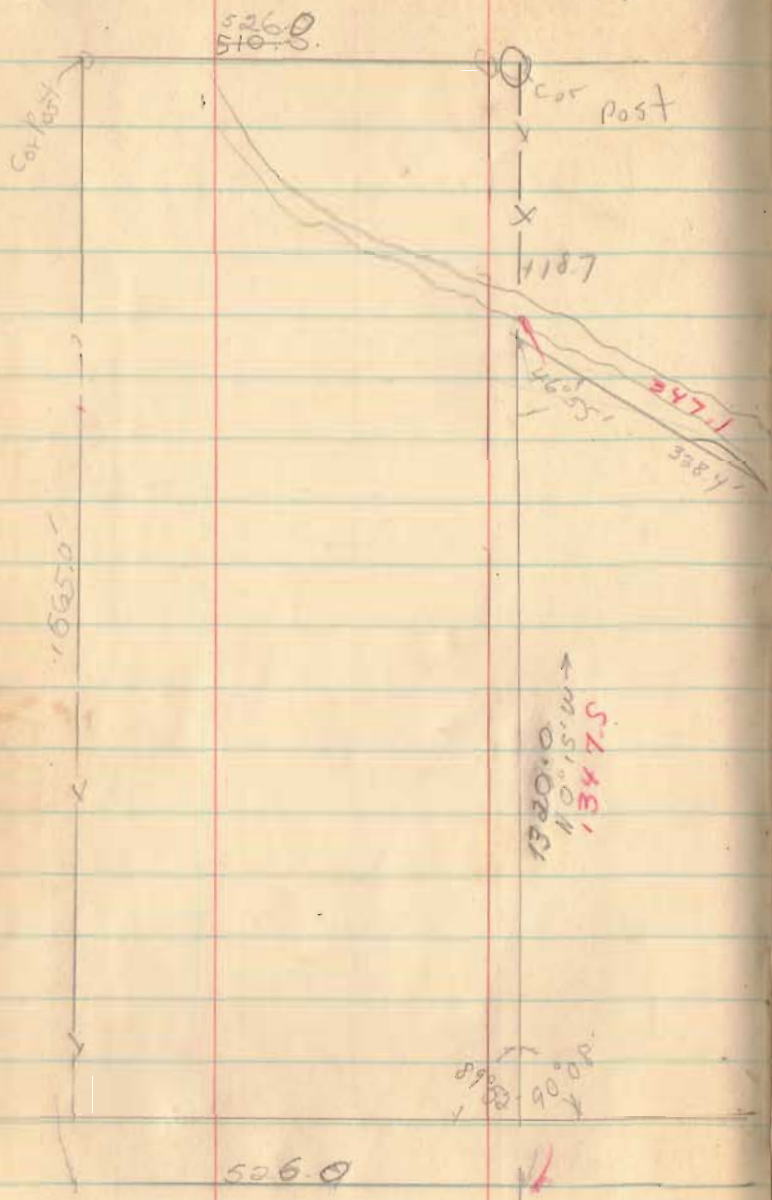
North Line of V.M.S. 10503



wash. Twp

July 7, 56

43



46° 55'
 143° 23'
 79° 35'
 90° 08'
 360° 01'

Red is to center
 of ditch (Cal)



INDEXED ON MAP

445.9
 S 56° 22' W
 589.0
 W.C.H. 54

PARTS OF LOTS 67 & 78

July 19, 56

45

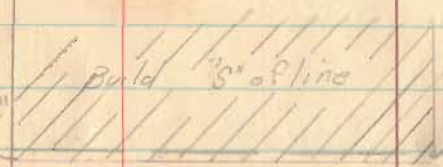
Columbus 80'

Lot 67

Lot 78

Detroit 60'
Plat 268.251

Measured 269.71'



44.13 22.06 22.06
 502.5' Iron Found

70.29

221.0'

16 1/2' ALLEY

2149

INDEXED ON MAP

Stephenson to Wakefield
Richland Twp, U.M.S. 9978

July 14, 56

47

684.79

259.8

219.7

(0.74A)

205.2

249.0

43° 09'

N 50° 42' W
359.8

46° 51'

39.25

INDEXED ON MAP

Noble - Richland Twp
U.M.S. 14032

Aug, 56

51

East line
of U.M.S. 14032

25' 25'

1.60A

200
NOTE →

316.8

800'

C.M.S.

43560

716

261960

43560

316.8

22 6969.60

66

30

22

149

132

176

176

3343

INDEXED ON MAP

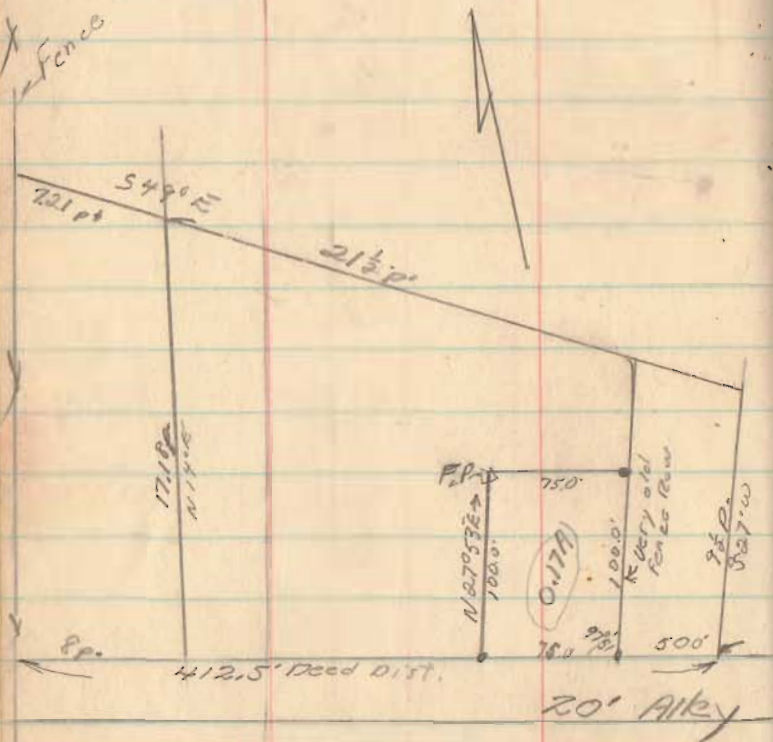
Big Springs U.M.S. 9956

Paul Wren, Route 7

Rushsylvania, O

Mar 24, 56

54



3401

INDEXED ON MAP

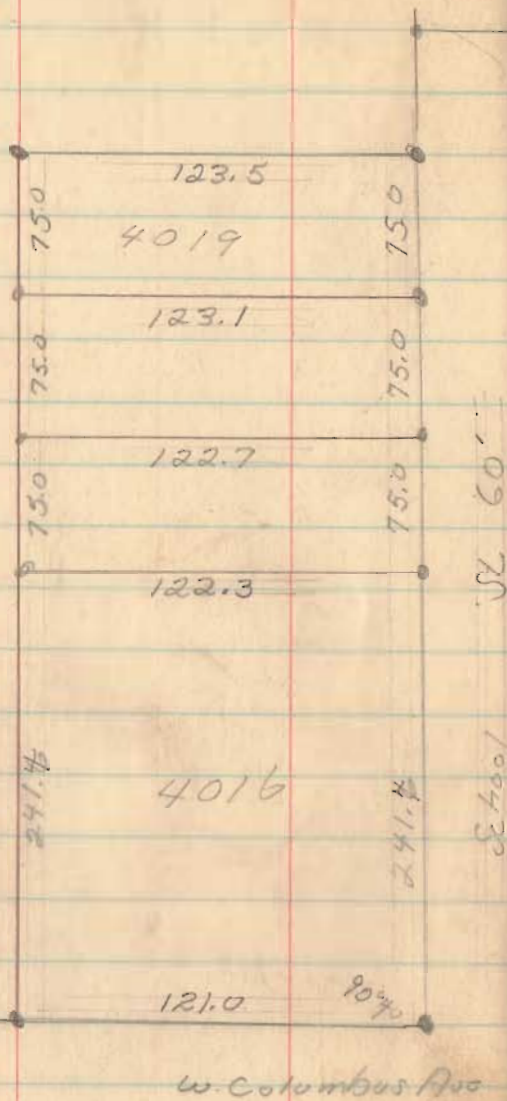
278.4
← N 69° 58' W

See Co. Engr. FB. 578, 70
601456

St. Route 70
N 40° 47' E

Allotment for
Messie + Hurst
Bellafontaine, O

Sec 19 538 + 572



56

W. Sandusky 60' wide



375
40.7
30
495.7

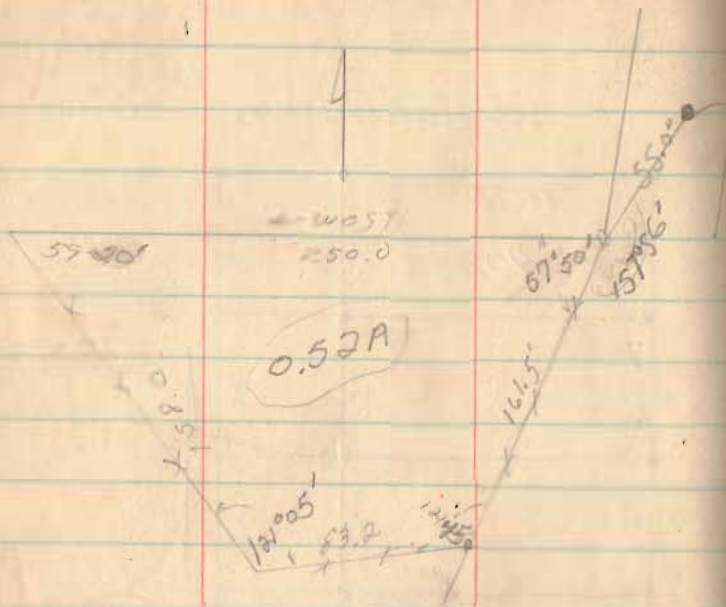
6465

INDEXED ON MAP

5W
90 4 4

C. C. HOUSE F, VMS 12276

Sokes Twp.



R. F. D. #
Lake View

Dec., 55

57

Sta 19+34.5 (C.H. 266.)

See FB 57 pg 59

58	14
12	10
12	10
12	10
12	10
30	00

1936

INDEXED ON MAP

Corp. Line Ext.
Bellefontaine, O

5-3-14

Harrison Twp

2157

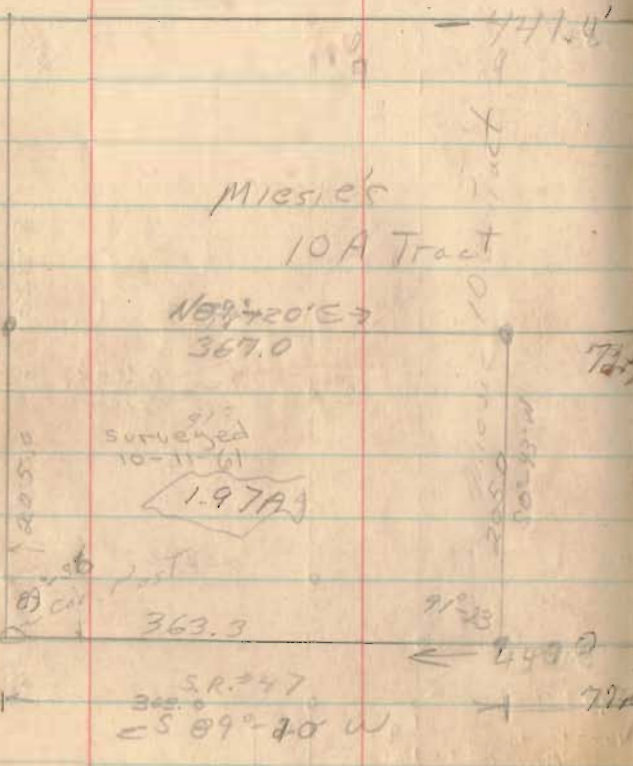
INDEXED ON MAP

89-20

91-23

0 43

Soc. Bellefontaine
700 Tract
NO 16' W



Miesie's
10A Tract

NO 16' E
367.0

Surveyed
10-11-61

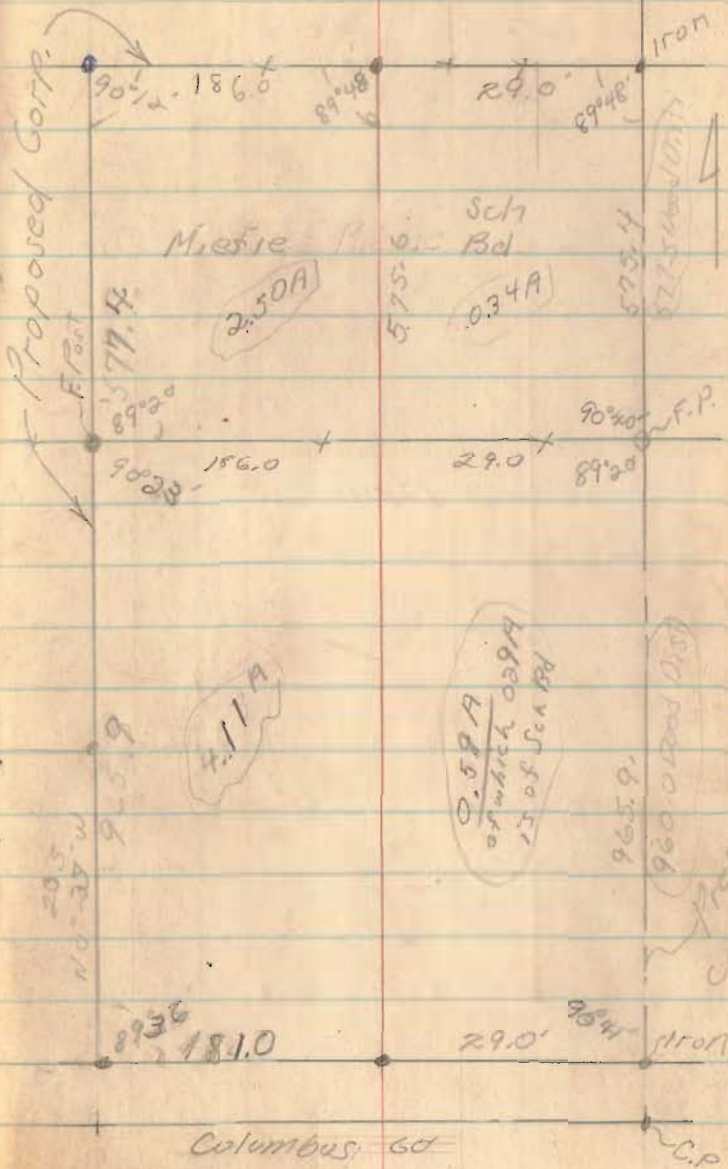
1.977A

363.3

S.R. 347
300
S 89° 40' W

See pg 58

59



Proposed Corp. Line
F.P. 10

Miesie's

2.50A

Sch
Bd

0.34A

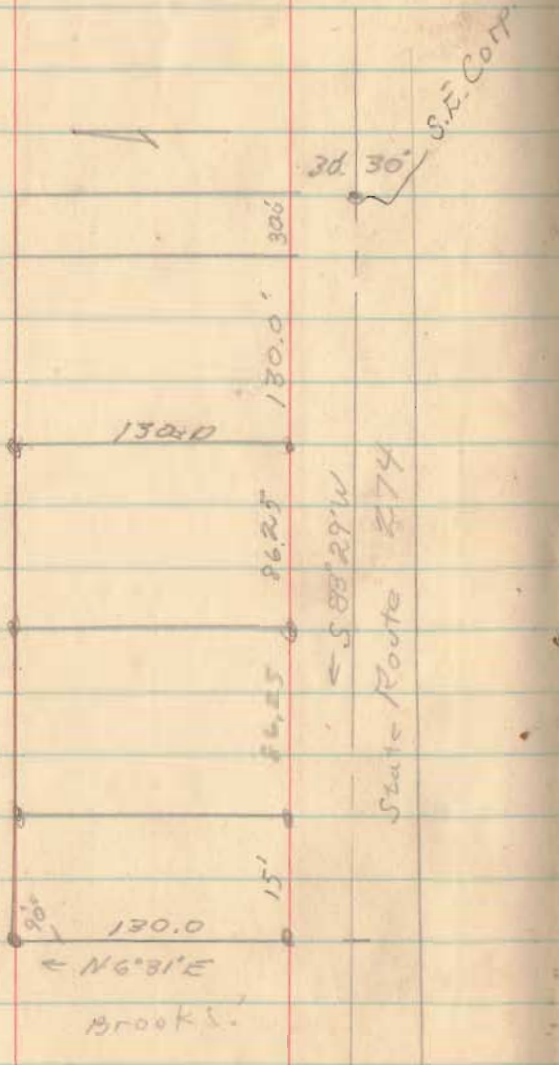
4.11A

0.58A
Bldg
15' of Sec 16

960.0000 0.15
Proposed
Corp. Line

Columbus, O

For Paul McCormick
 Huntsville, Ohio
 McArthur Twp
 U.M.S 9904



Nov 25 55

61

100
 86.05
 246.05
 96.25
 332.5

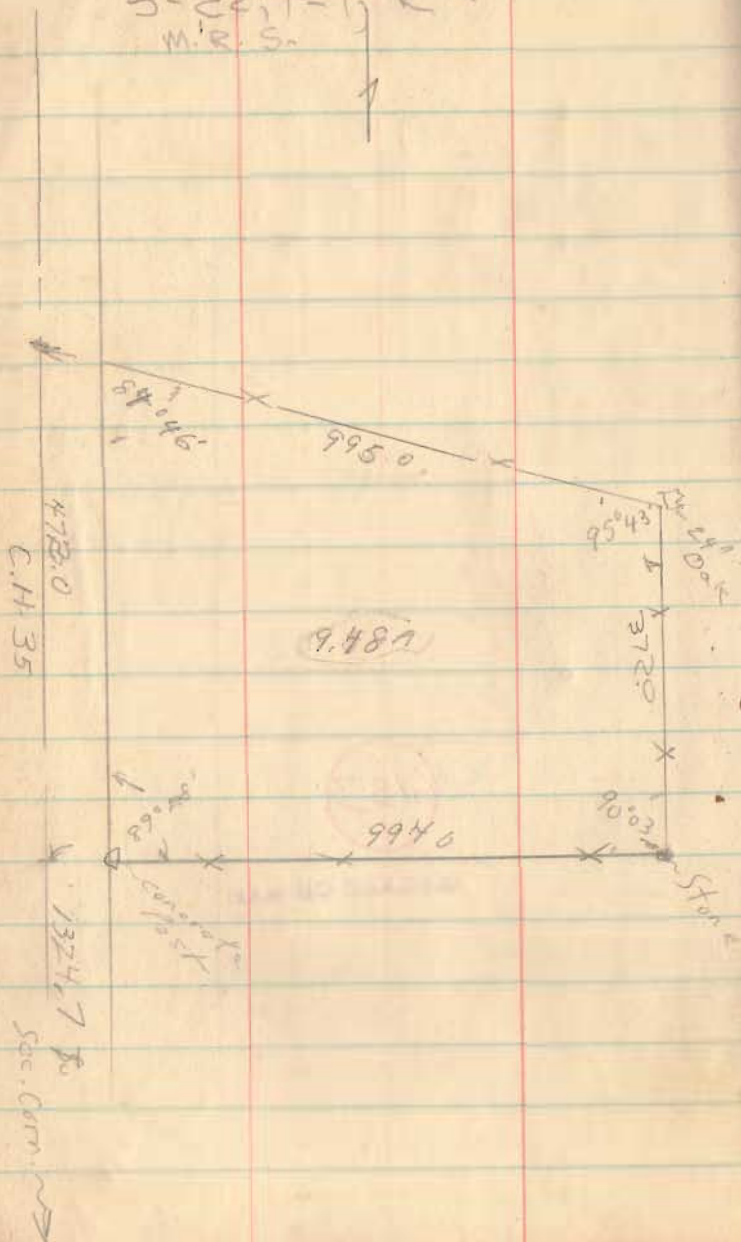
6133

INDEXED ON MAP

Howard Dodson
Miami Twp.
S-22; T-1; R-8
M.R.S.

Oct., 55

62

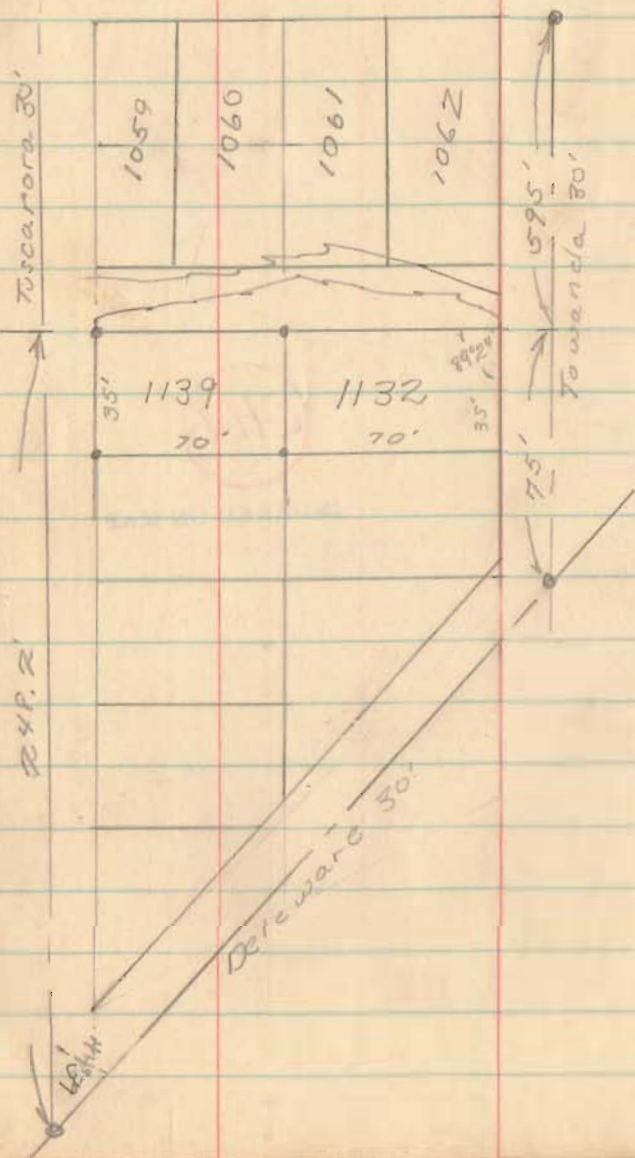


6466

INDEXED ON MAP

Lester Antijuntti 2-1349
Chip #2 Lot 1139
217 So. Detroit

63



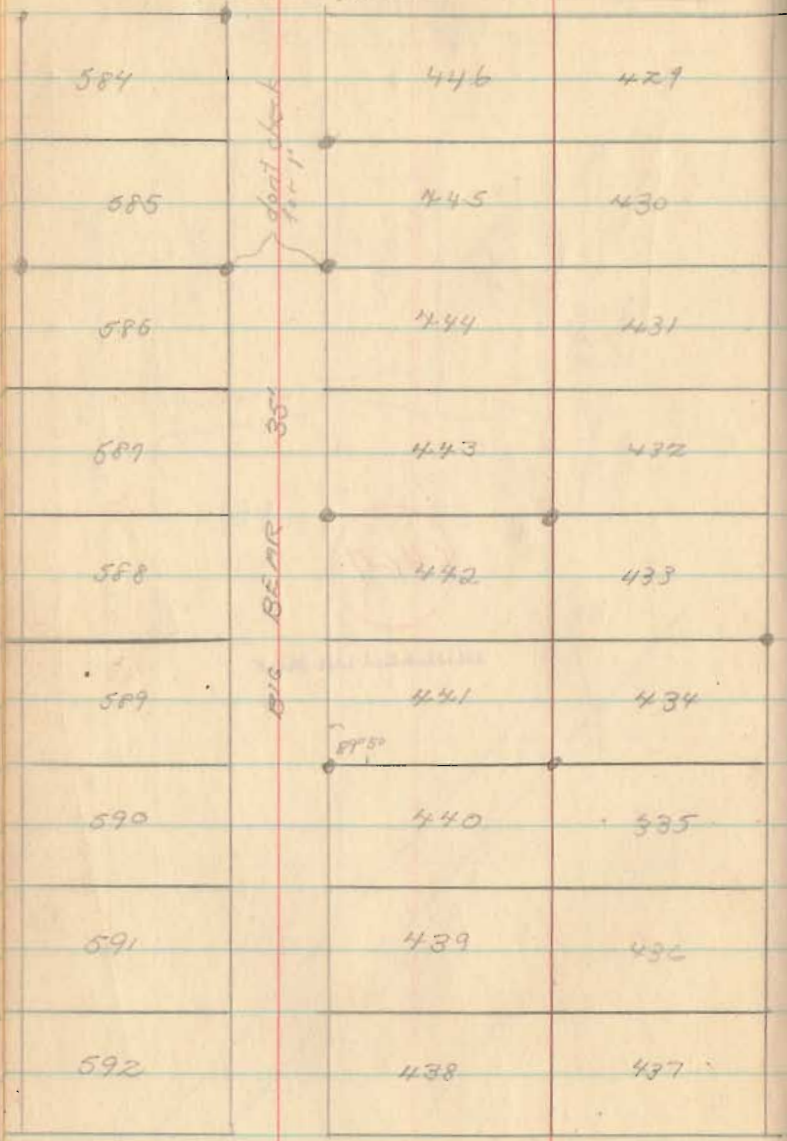
6467

INDEXED ON MAP

Chippewa No 1
 For Pearl Yates 441+442

Aug 15, 58

64



all lots 35' x 50'

6468

INDEXED ON MAP

SEMINOLE 35'

Earl Grayrock V.M.S. 9933
Phone 88-2534; Rusherock Twp



John D. Raby
118

Fulton
Hughes et al
18.90

5113

4738

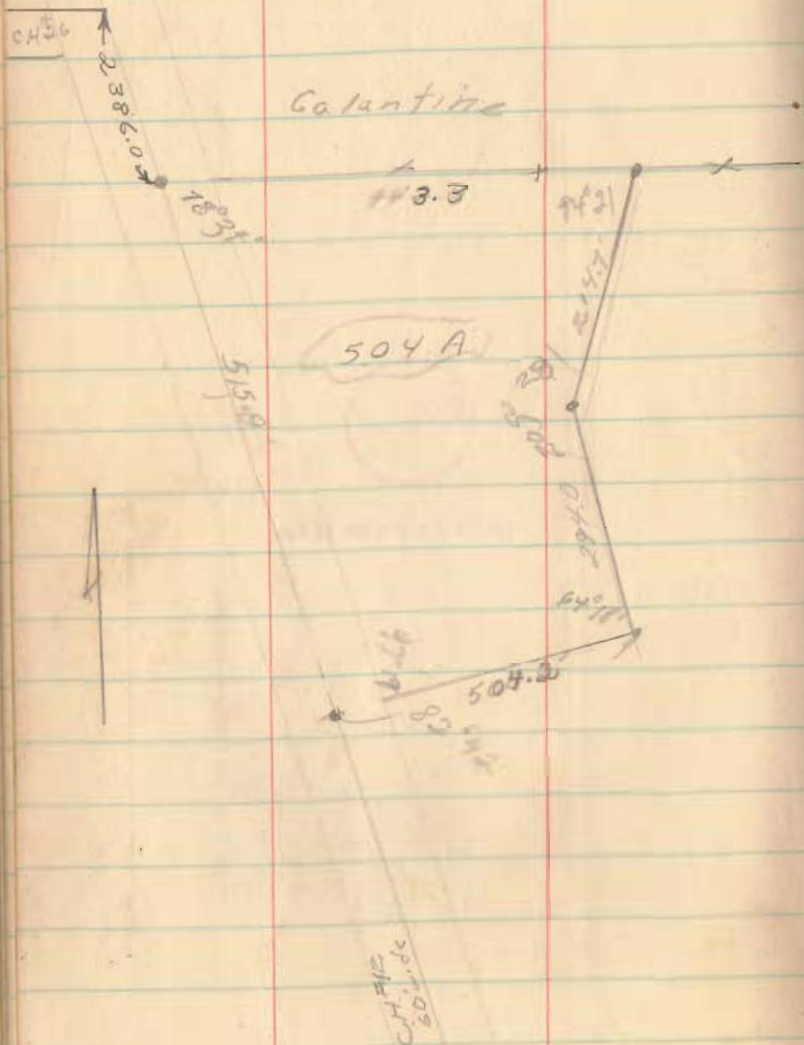
INDEXED ON MAP

Larson Survey U.M.S. 3472

Rush Creek Twp

Sec Engr. F.B. 646 pg 48

Surveyed from a 4202 A. Tract



67

78°34
97°18
64°18
205°27
94°21

137°58

3388

INDEXED ON MAP

Richard Bushong V.M.S. 9904

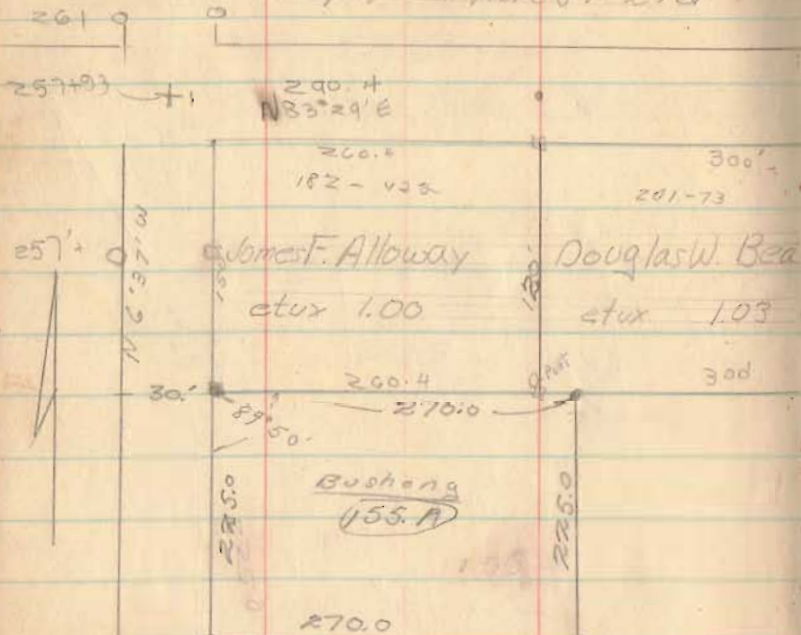
McArthur Twp.; Phone 87-246

Aug. 55

225' Front

68

300' Back



S.H. 579

S.R. 274 60'

304.7

INDEXED ON MAP

James F. Alloway et ux

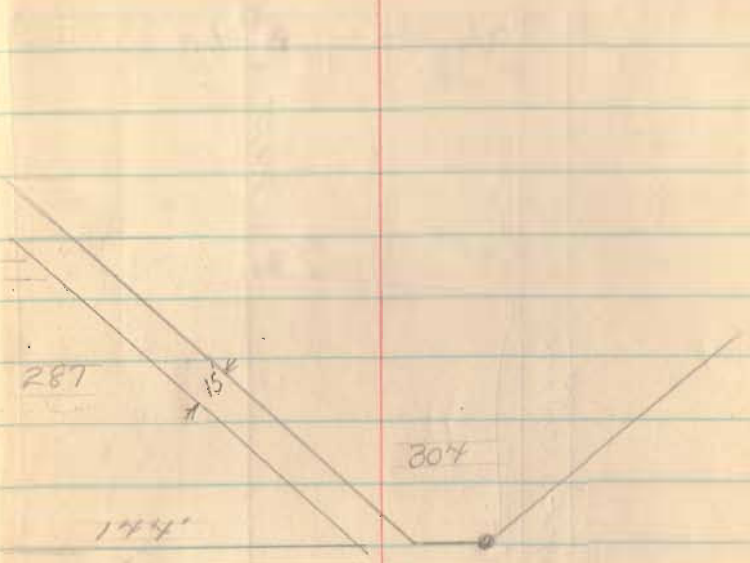
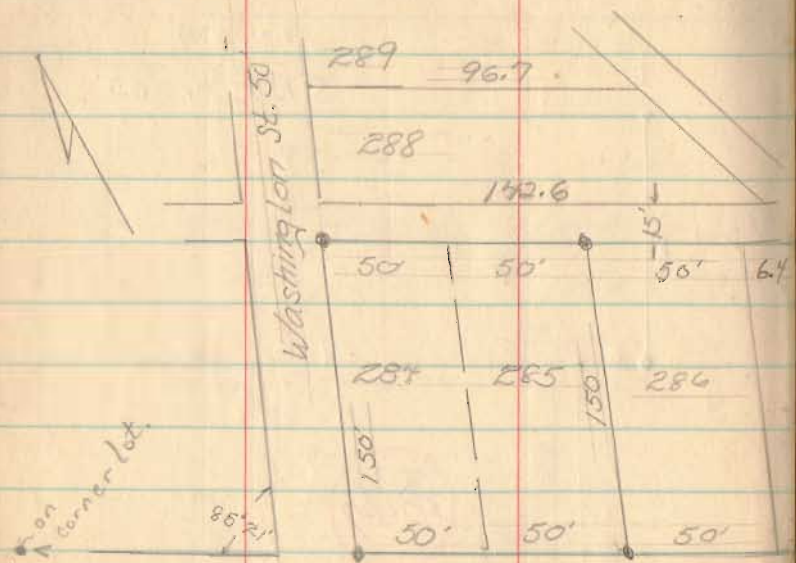
257

S.R. 33-60'
S.H. 136

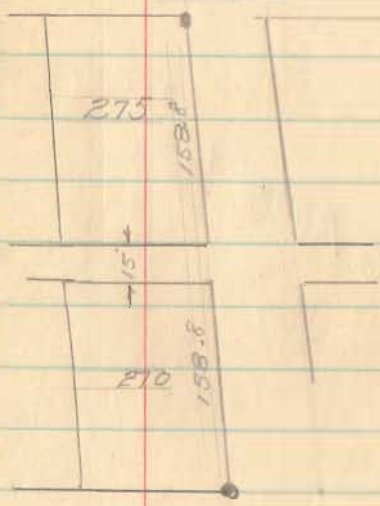
Glenn Schullin 9972
 Belle Center, O

July, 55

69

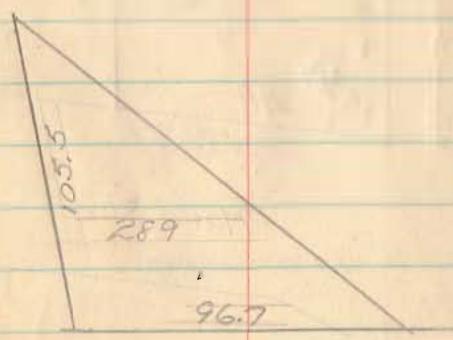


Vine St. 50'

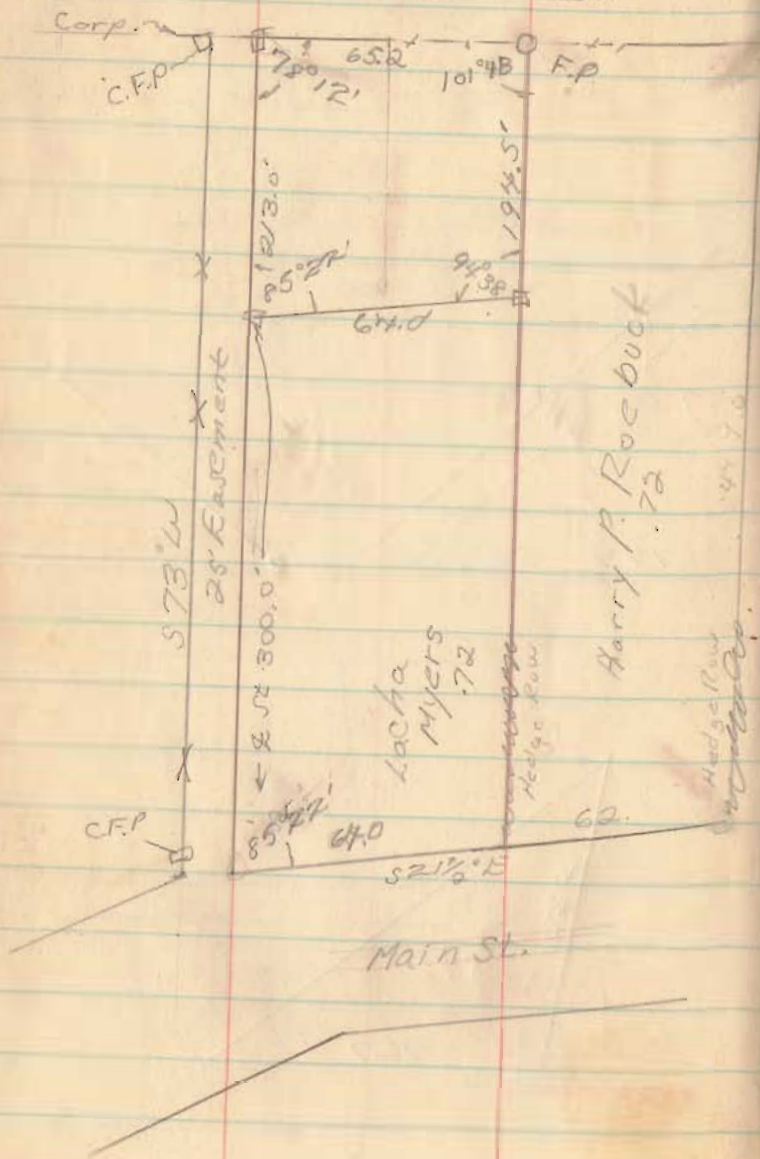


6470

INDEXED ON MAP



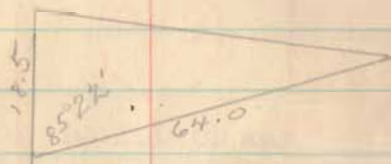
Belle Center VMS 9989
 Paul Smith 87-2611



July 26, 55

70

? S 9 1/2° E 7.2 Rd 118.8'
 dk N 70 1/2° E 31 2/9 1164 Pike 513.2'
 dk N 19° W 7.57 Rd & Pike 124.9'
 ? S 70 1/2° W 29.2 Rds 481.0



6471

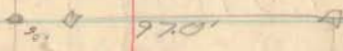
INDEXED ON MAP

Tom Taylor
~~to the~~; R.R. 1
Lakeview.

CH. 86

Stoke Twp.

B. 20 Sec. 20 T. 6 R. 8



261.0'

0.5879

250.6'

574.0'

97.0'

658.5'

Sec. F.B. 516

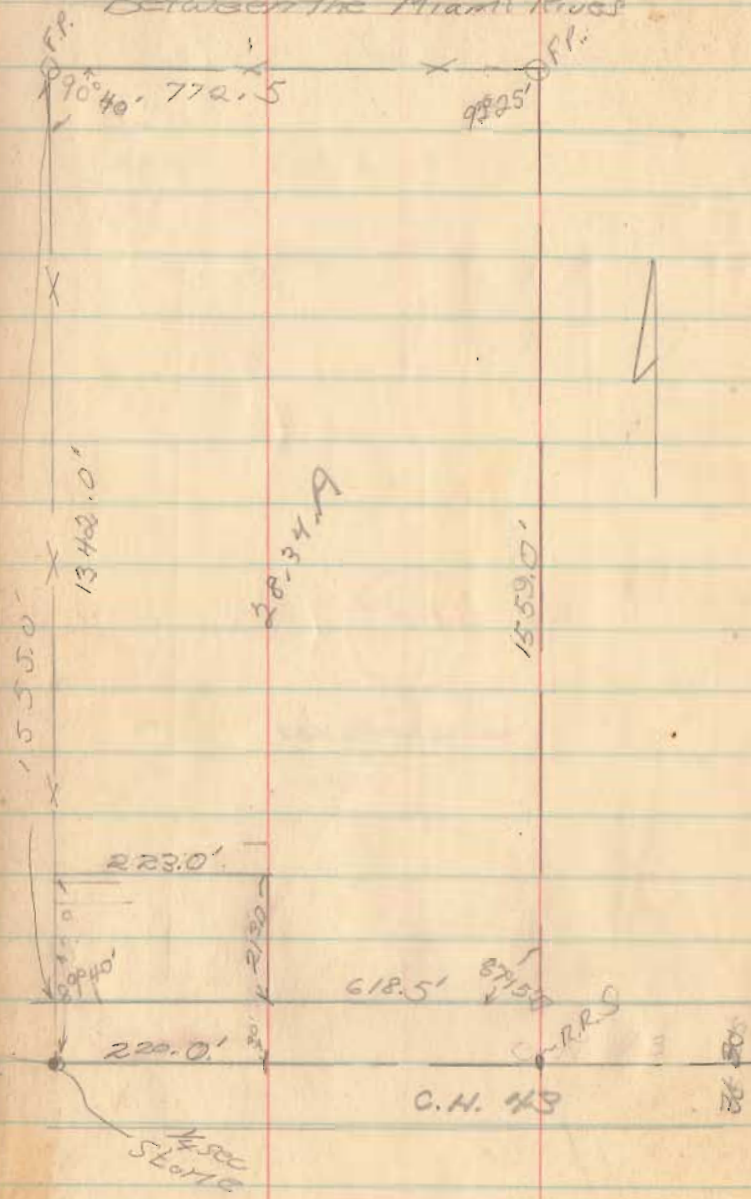
134.08
80.51

117
2235
399
751
4095

6143

INDEXED ON MAP

Leuvalley
 Glenn Carpenter
 Sec 26; T-3; R-14; Union Twp
 Between the Miami Rivers



July 16, 55

72

See County Engr.
 F.B. 649; pg 30 & 11

Glenn E. Leuvalley
 RR #2
 De Graff

5911

INDEXED ON MAP

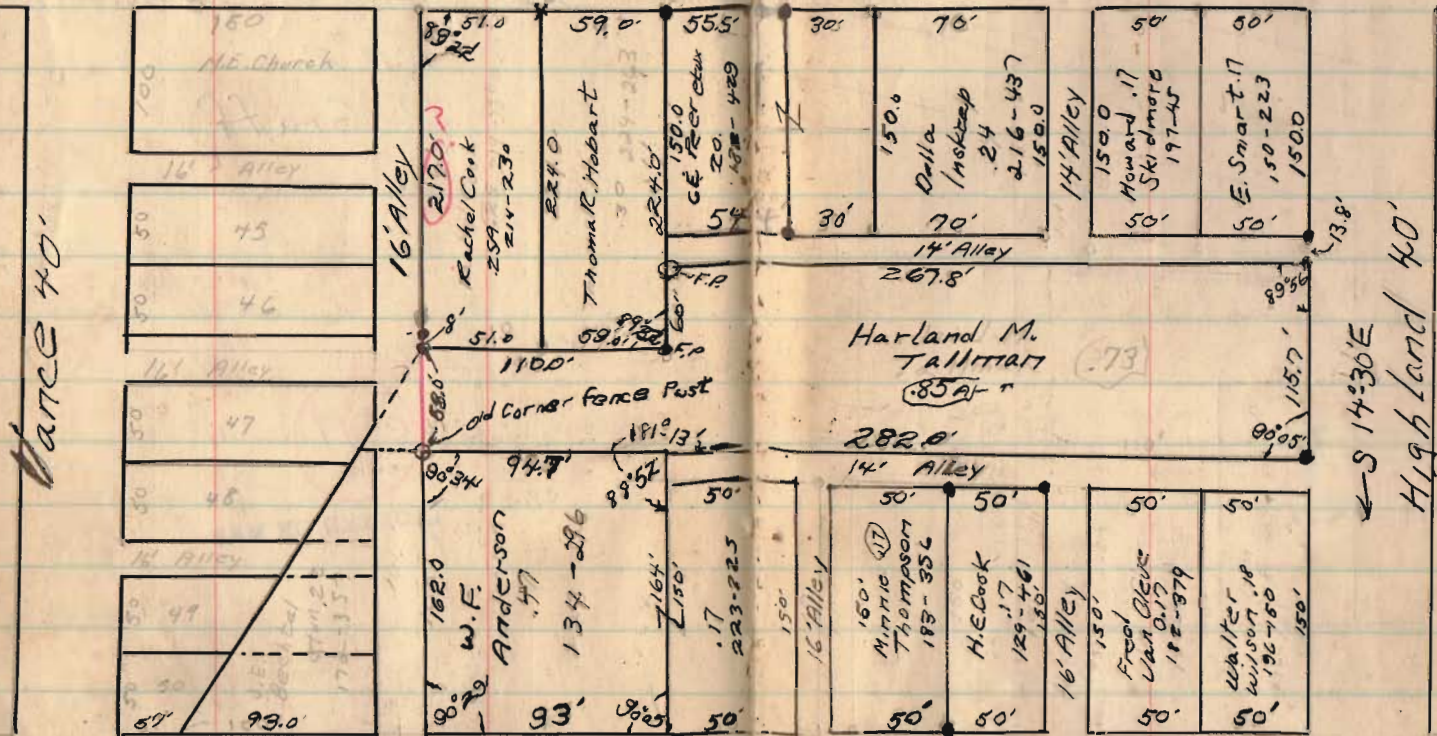
West Mansfield
H. Tallman

June, 55 73

See Plat drawn

• Orig. irons found

Center 60'



State 50'

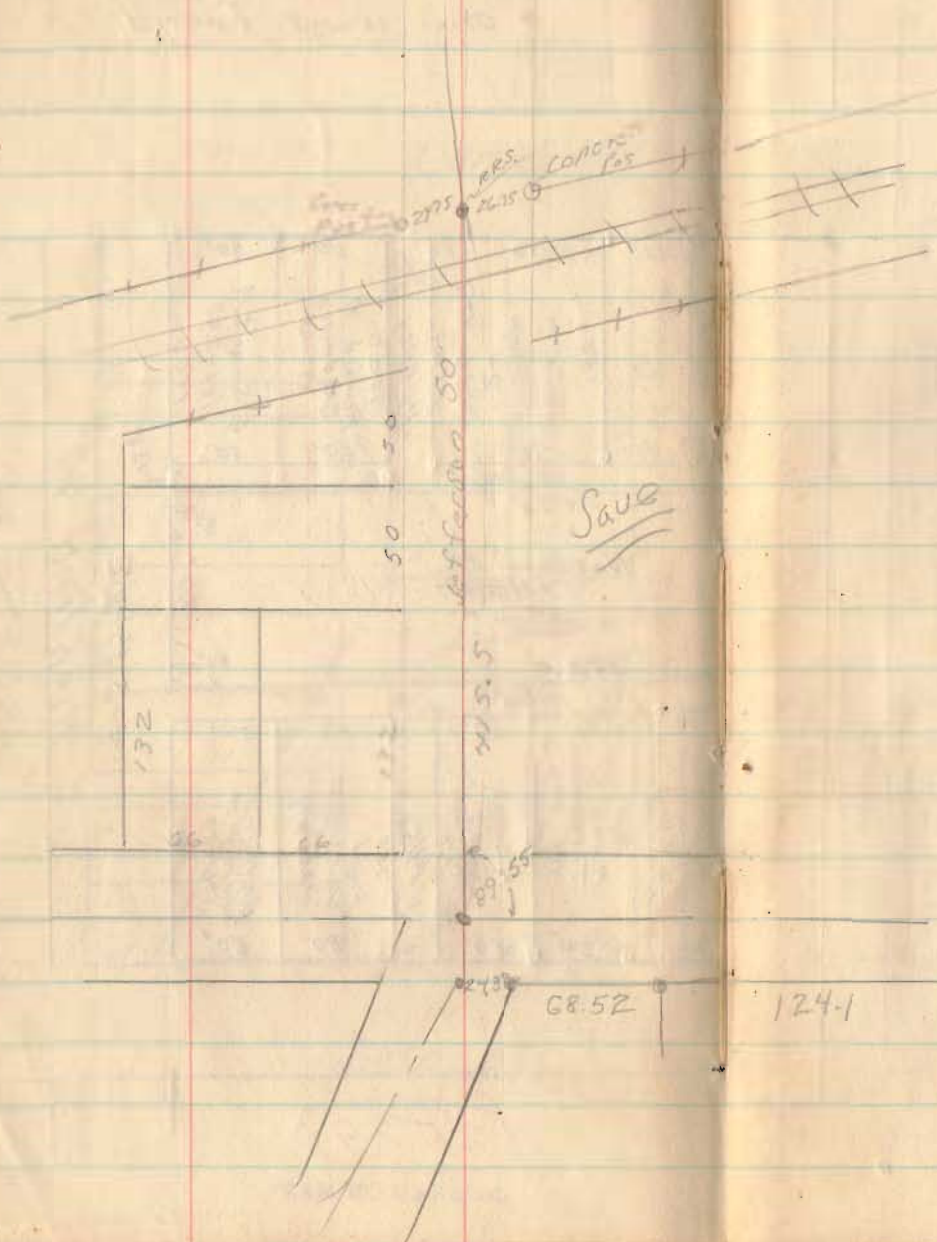
2529

INDEXED ON MAP

SEB BK 2 Pa. 49

In Bk II

74



4221

INDEXED ON MAP

124.1
68.5
89.4

217.0

89° 57'

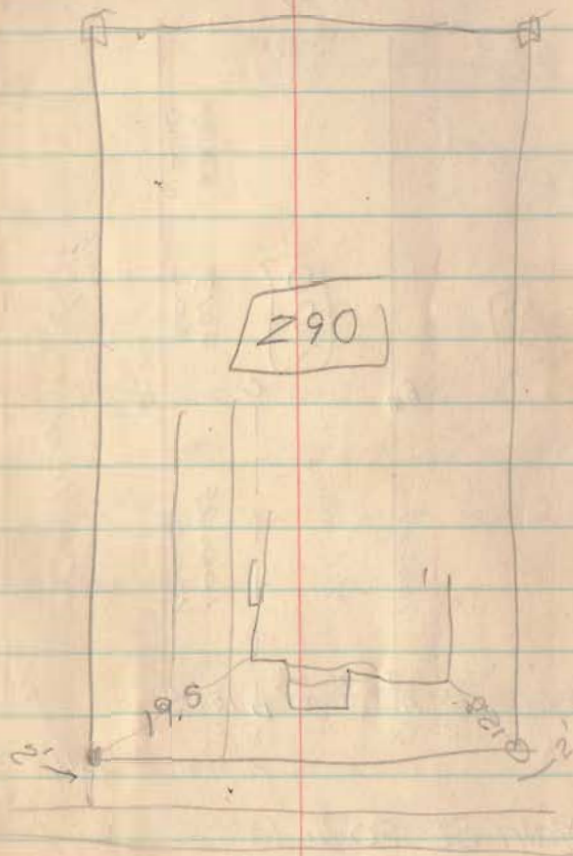
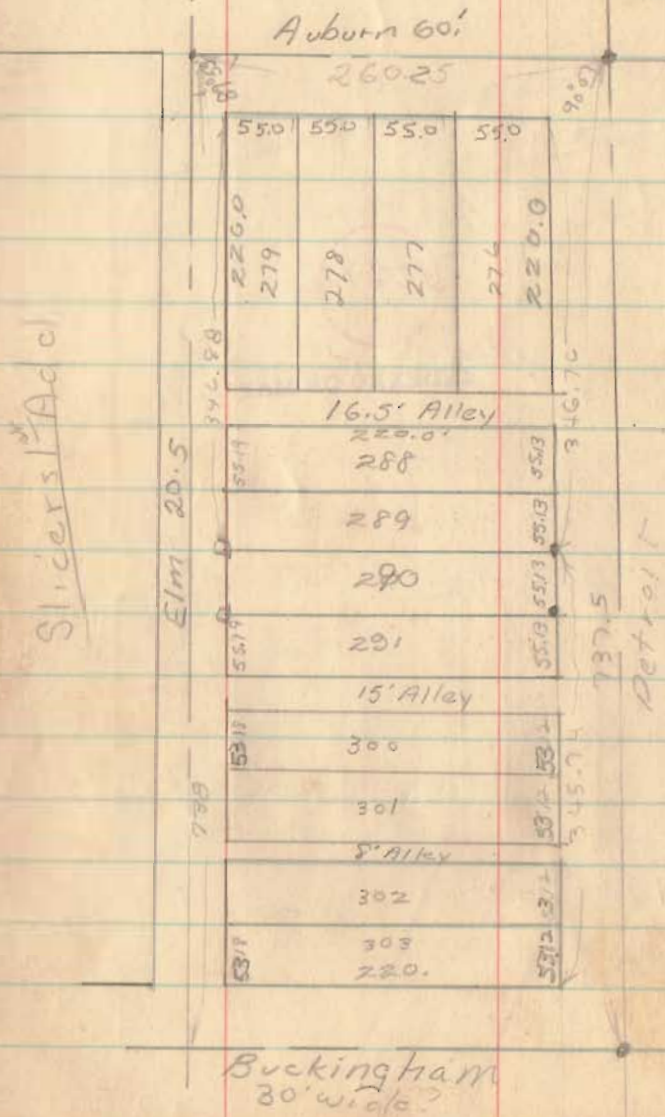
George Vance
 Lot 290
 Bellefontaine, O

May, 55

75

6472

INDEXED ON MAP



F. A. Corwin
 Lots 99 + 100
 Bellefontaine, O



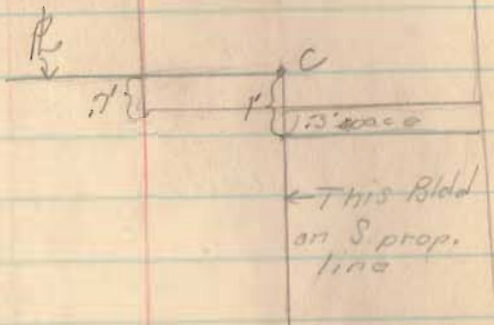
Main St. 80' wide

March, 55

75A

6473

INDEXED ON MAP



Note: Add .0027 of a foot per foot to N. & S. lines
 Subt. .0009 of a ft. per foot on East and West boundary

A - a chisled π x 2' east of line

D - a chisled \perp x 2' east of line
 1-5' from Bldg

B - iron pipe

C - Nothing set (see detail at top of page)