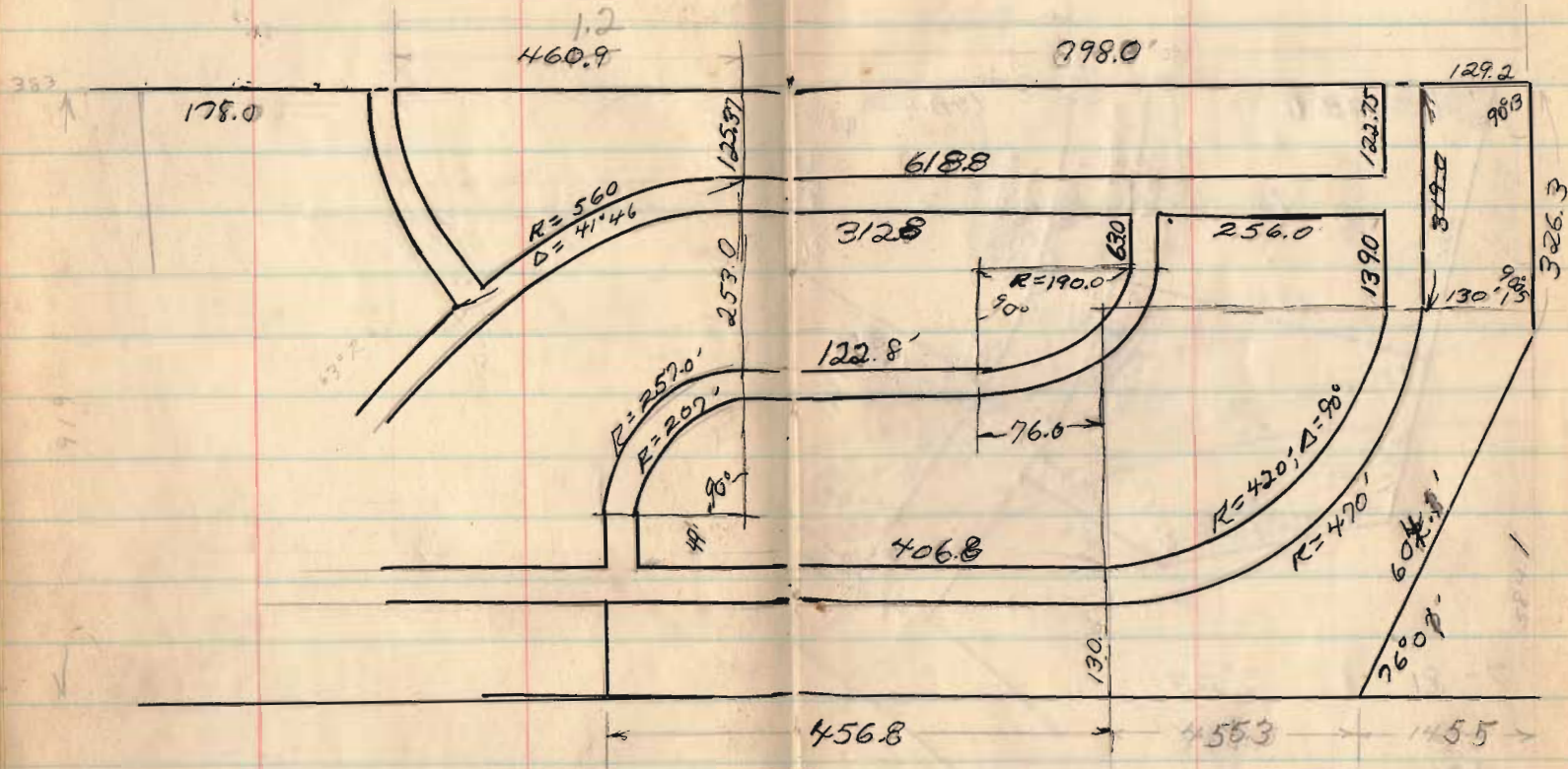
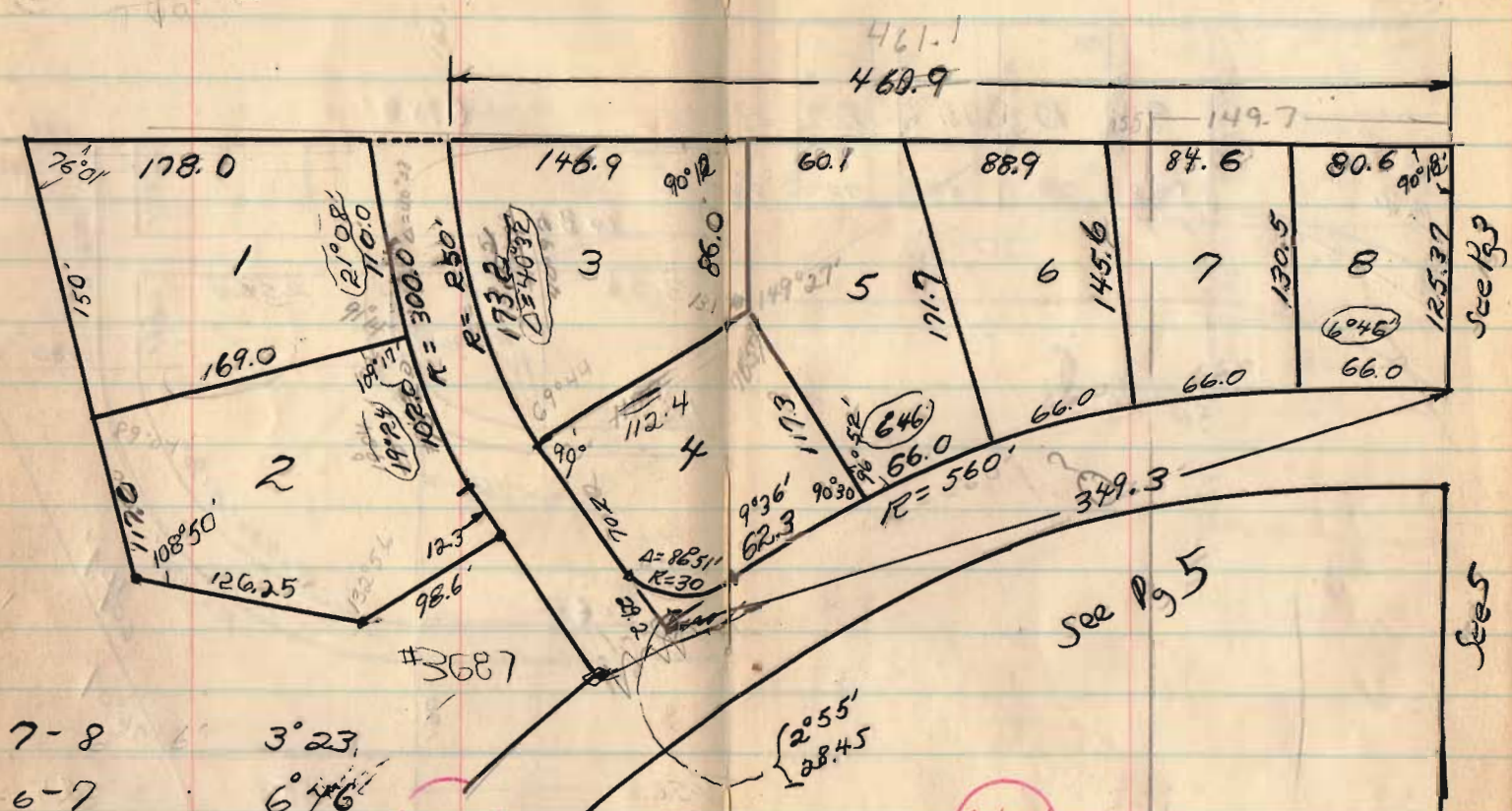


LAKE HTS. #2 - P.C.'s

1956

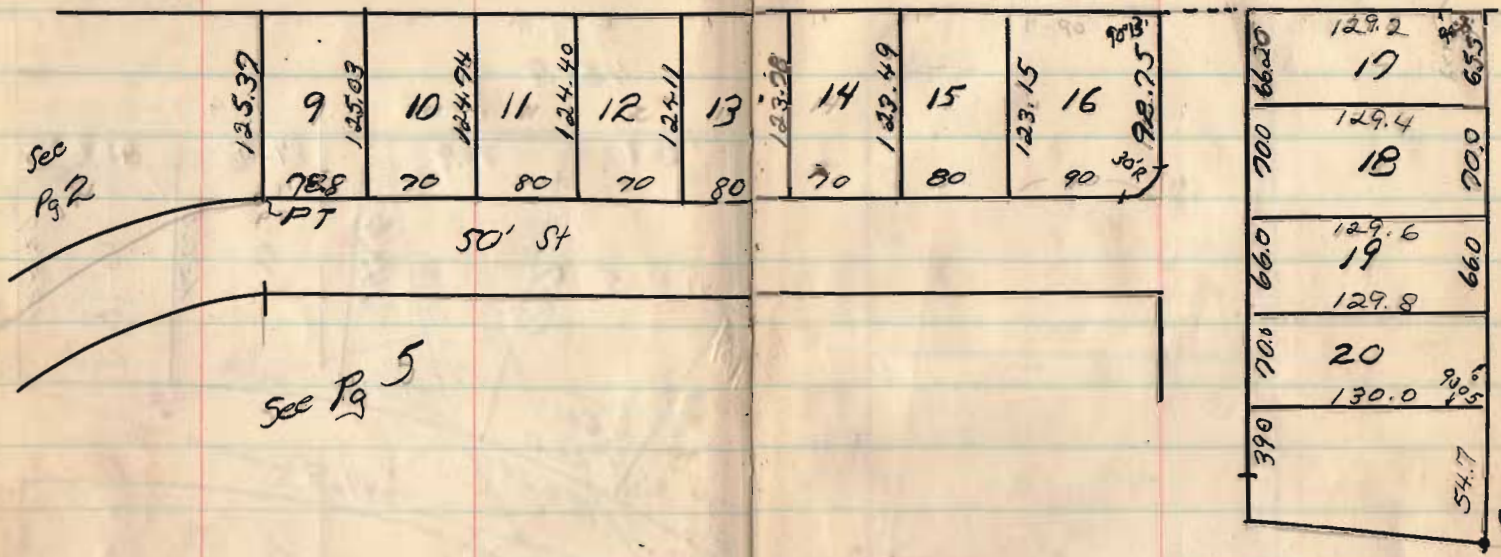




- 7-8 3° 23'
- 6-7 6° 46'
- 5-6 10° 09'
- 4-5 13° 32'
- 4 28.45 15° 52'
- 7. Hub 18° 00'

INDEXED ON MAP





See Pg 2

See Pg 5

50' ST

Angle

See pg 9



INDEXED ON MAP

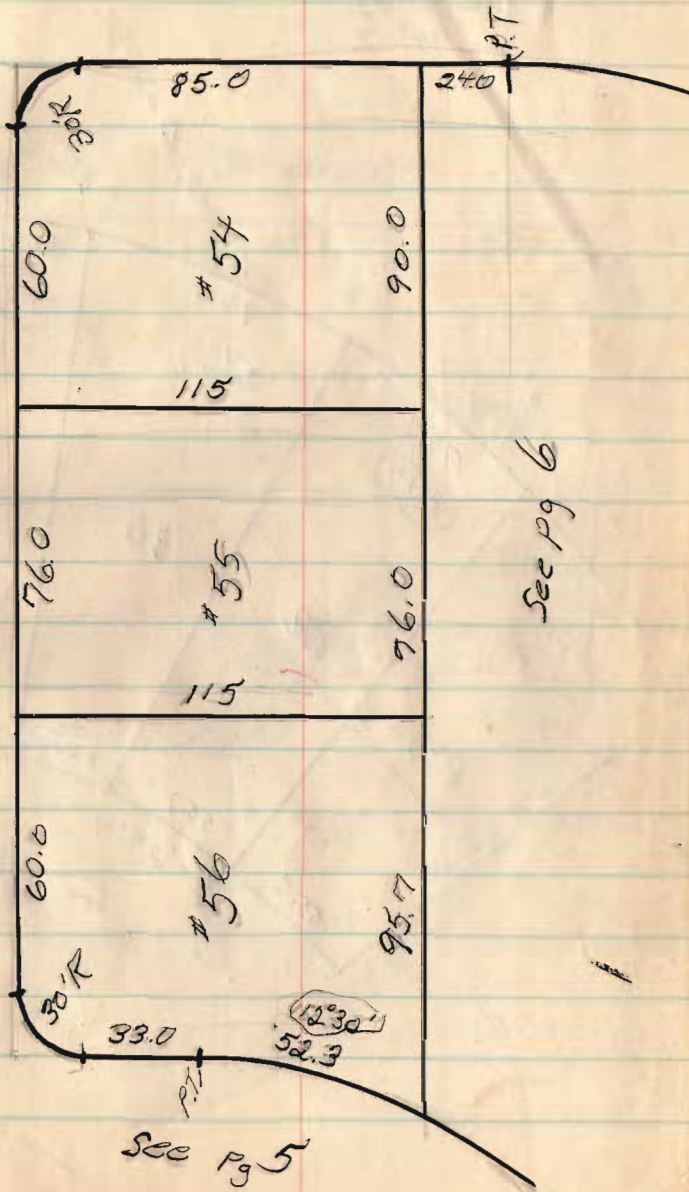
54.7  
140  
66  
63.5

INDEXED ON MAP

6494

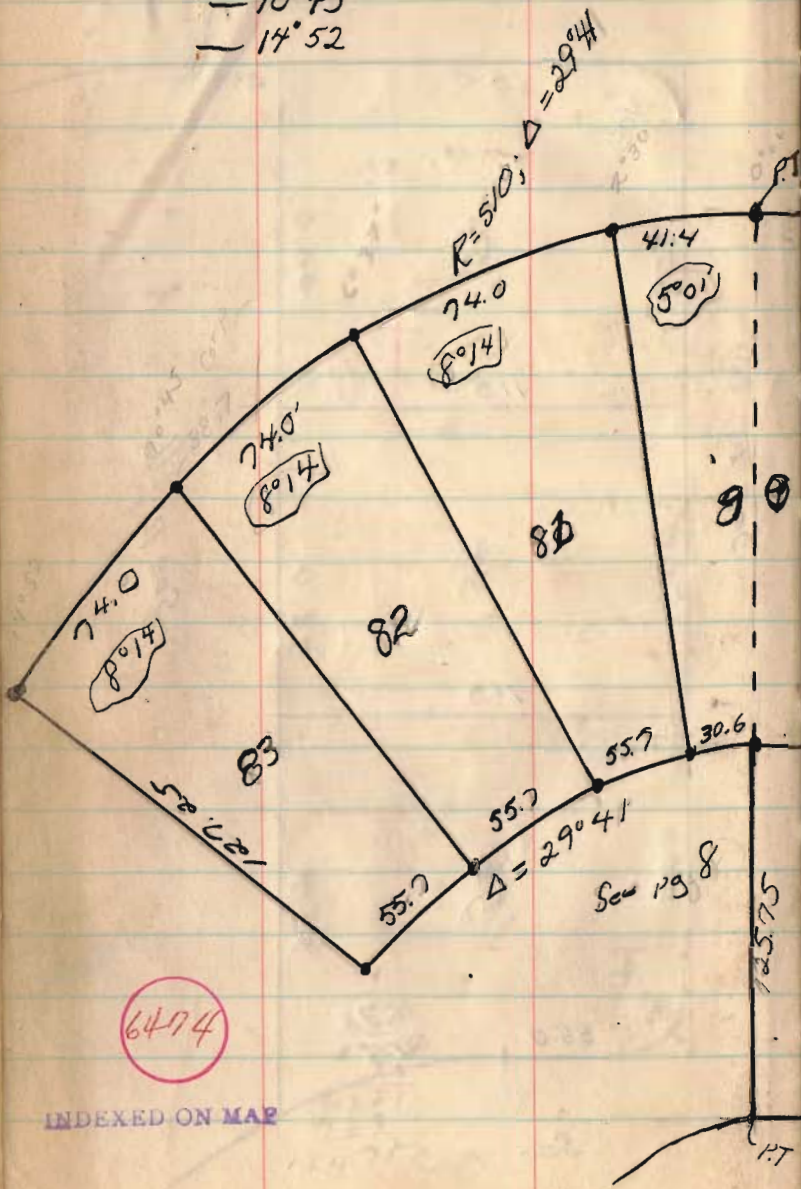
2436	6	1089
24		24
1744		4356
872		2148
10469		6196

See pg 3





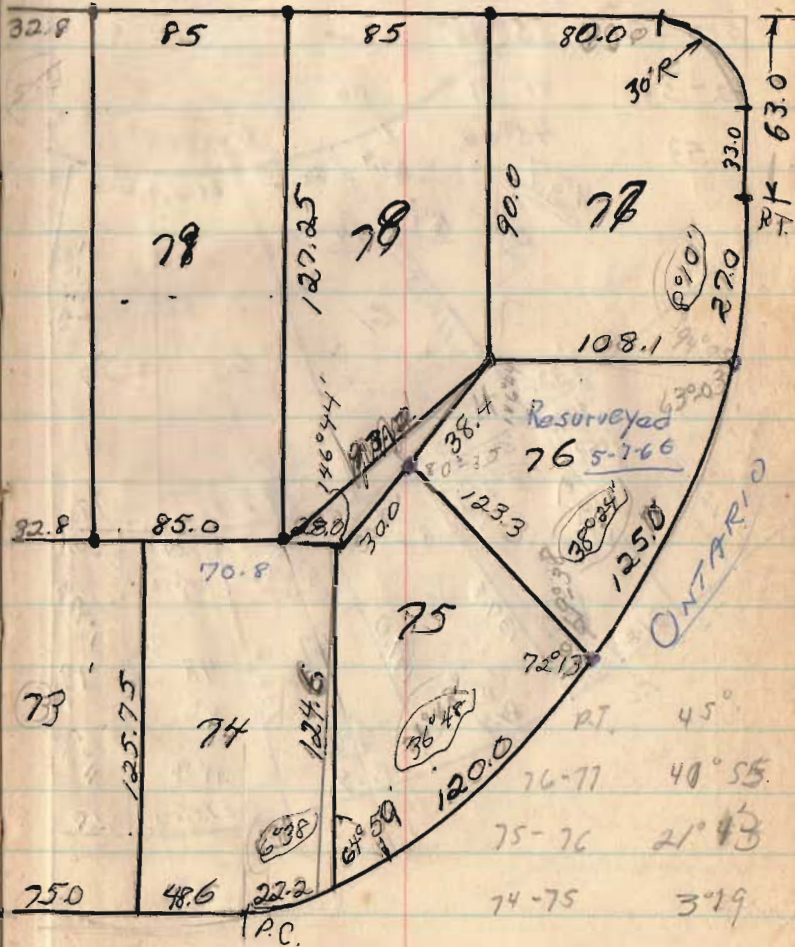
- 2°30
- 6°37'
- 10°45
- 14°52



68-03  
 89-38  
 146-44  
 60-55  
 260 00

5

ERIE 50 WIDEN





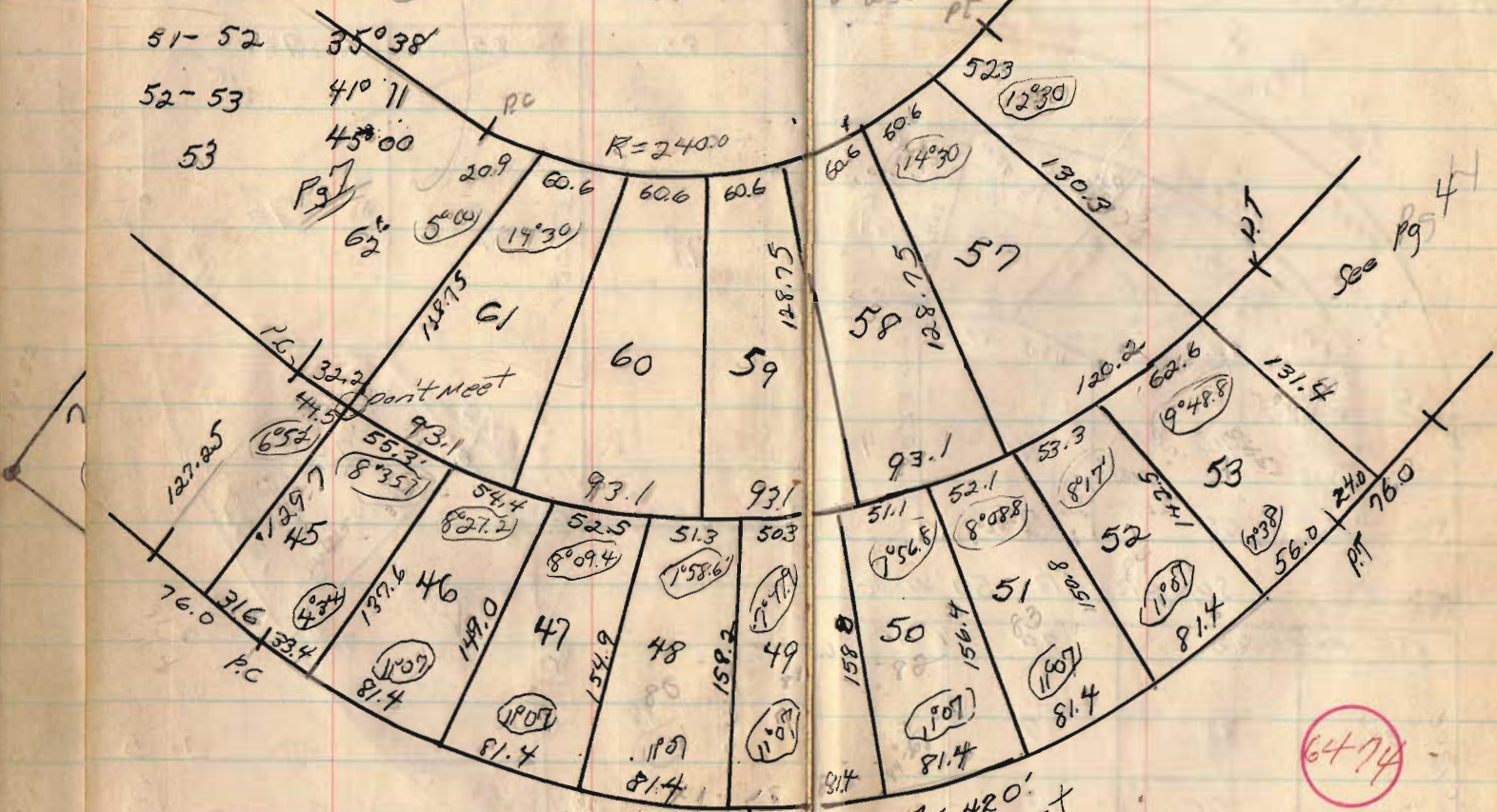
45-46 2°17'  
 46-47 7°51'  
 47-48 13°24'  
 48-49 18°58'  
 49-50 24°31'  
 50-51 30°05'  
 51-52 35°38'  
 52-53 41°11'  
 53 45°00'

of St. Side

PT  
 57-52  
 58-59  
 59-58  
 60-59  
 61-60  
 62-61

45°  
 41°00'  
 31°30'  
 24°15'  
 17°00'  
 9°45'  
 2°30'

44-45 3°26'  
 45-46 7°44' 6  
 46-47 11°57'  
 47-48 16°02'  
 48-49 20°01'  
 49-50 23°55'  
 50-51 27°54'  
 51-52 31°57'  
 52-53 36°05'  
 53-54 41°00'



R = 420.0  
 50' Street

6474

INDEXED ON MAP



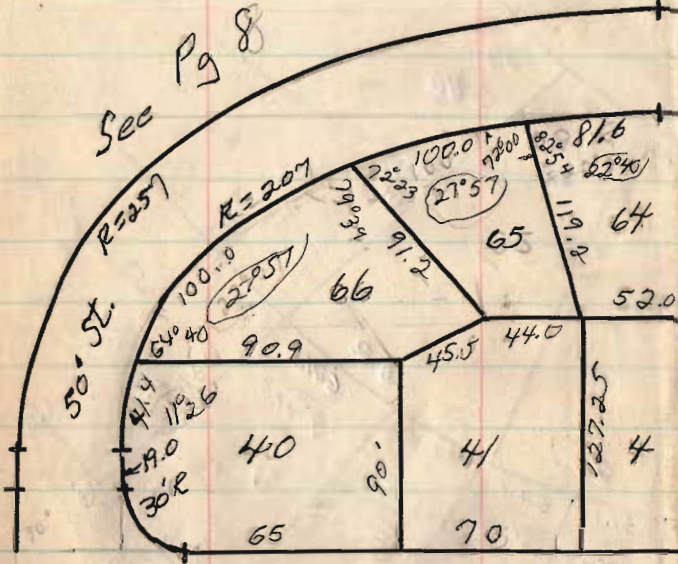
P.T. - 45°  
 64-65, 33°40'  
 65-66 19°42'  
 66-70 5°43'  
 P.C. 0°



6474

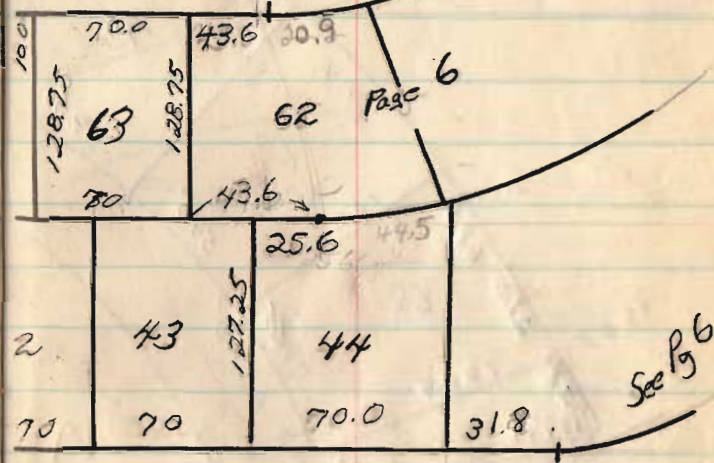
INDEXED ON MAP

Sec Pg 8



SUPERIOR 50' wide

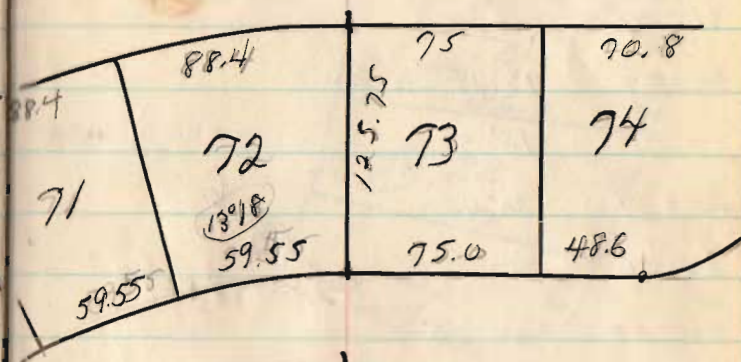
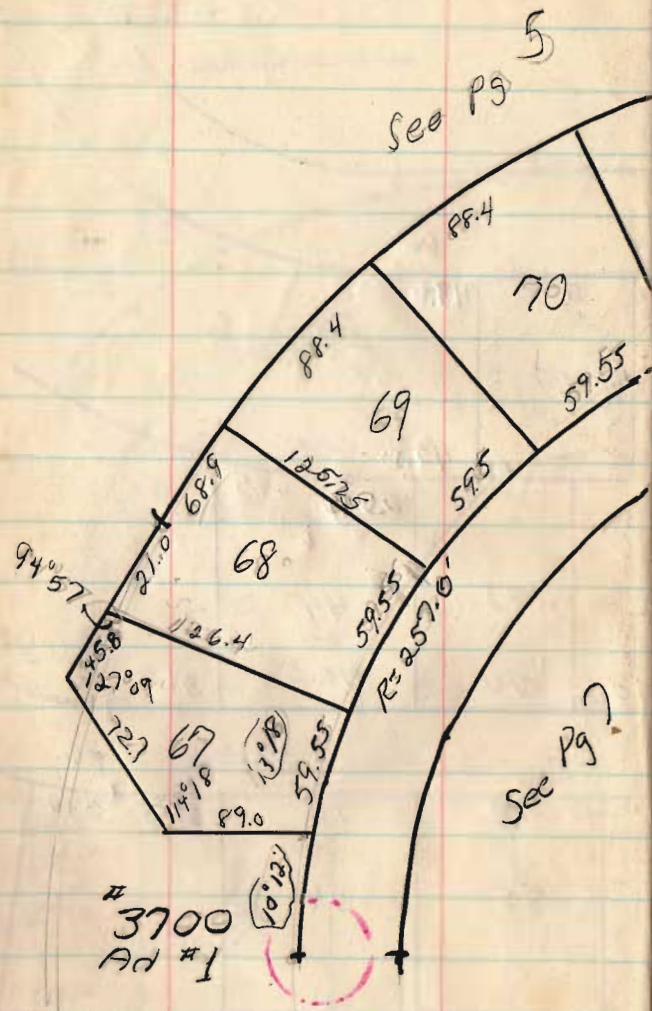
75	70	70	70
130.0	39	38	37
75	70	70	36



See Pg 6

P.C.

70	70	31.8	33.4
35	34	130.0	
	70		



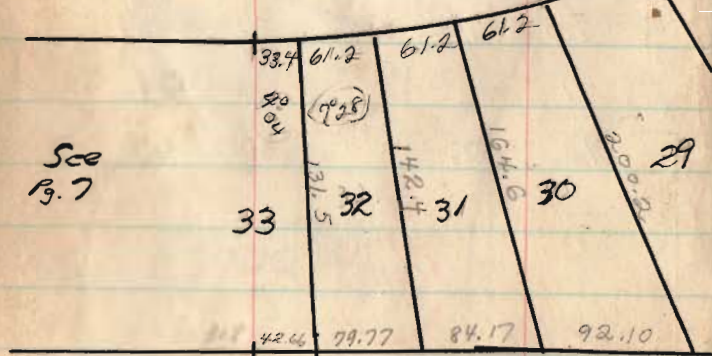
#3700 - 67	5° 06'
67 - 68	11° 45'
68 - 69	18° 24'
69 - 70	25° 03'
70 - 71	31° 42'
71 - 72	38° 21'
72 - PT.	45° 00'

6494



33-32 2°02  
 32-31 5°46  
 31-30 9°30  
 30-29 13°14  
 29-28 16°58  
 28-27 20°42  
 27-26 24°26  
 26-25 28°10  
 25-24 31°54  
 24-23 35°38  
 23-22 39°23  
 22-21 43°07  
 21-PT 45°00

See Pg. 6

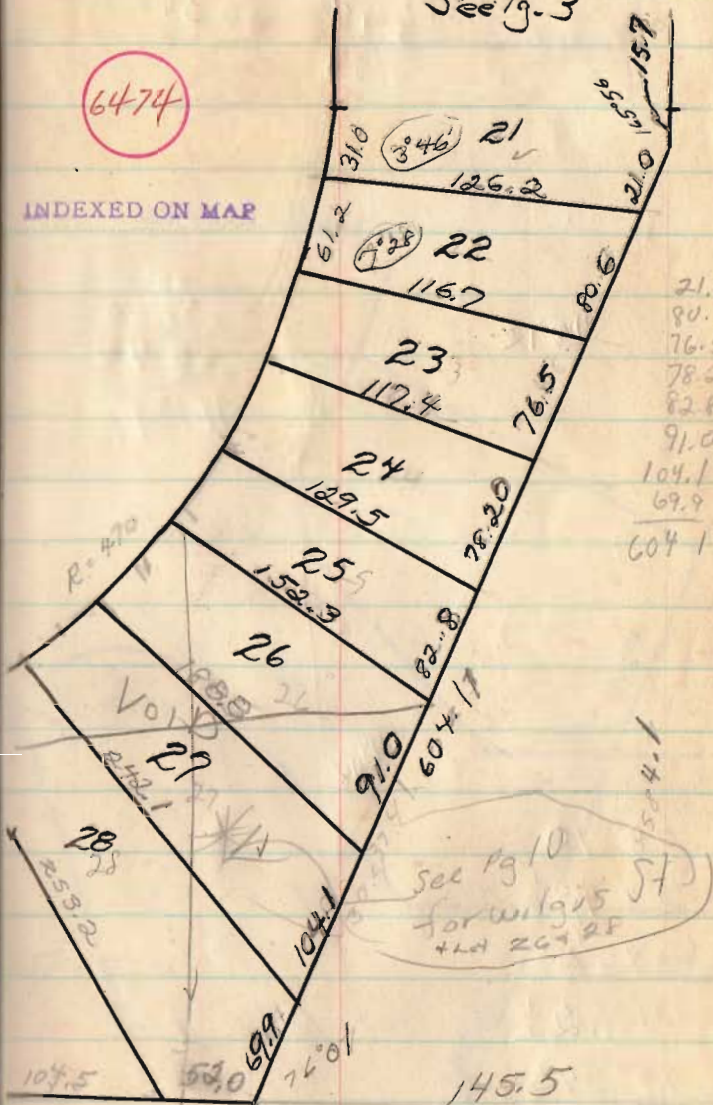


See  
Pg. 7

6474

INDEXED ON MAP

See Pg. 3



21.0  
 80.6  
 76.5  
 78.2  
 82.8  
 91.0  
 104.1  
 69.9  
 604.1

See Pg. 10  
 for will 1915  
 + lot 26728

$16.55$      $45.3\frac{1}{2}$   
 $11.12$      $24.0$   
 $5.19$      $80.54\frac{1}{2}$   
 $4.53$

$44^{\circ}17'$

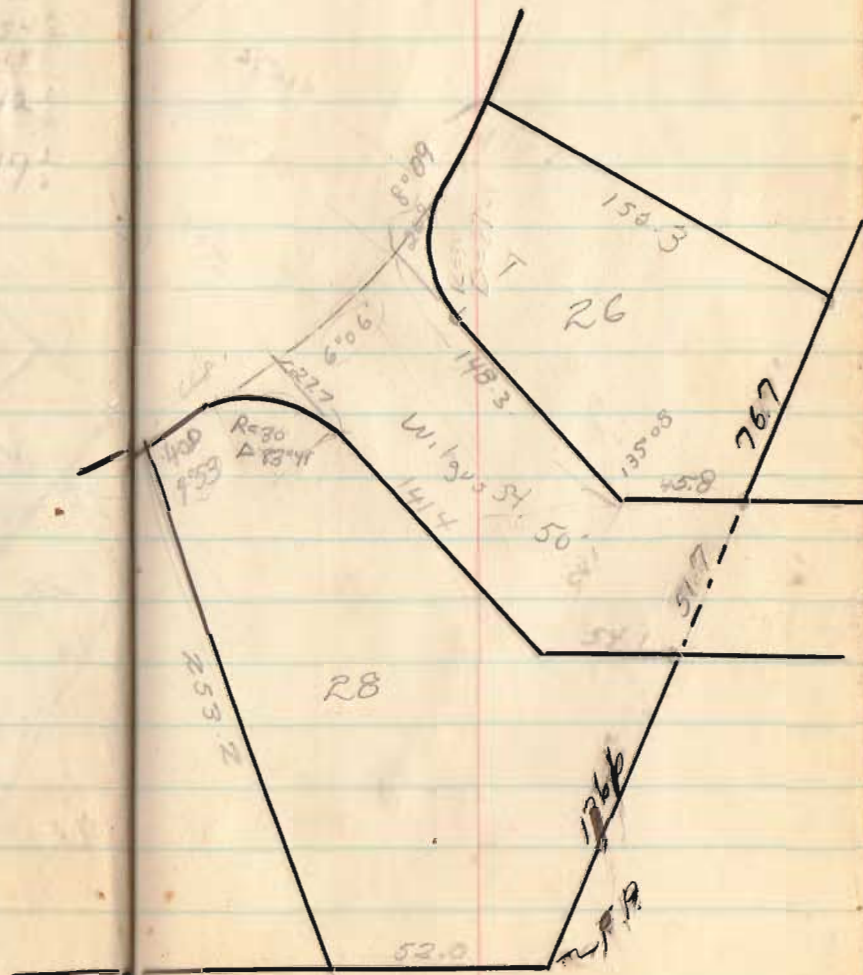
$44^{\circ}17'$   
 $65.42$   
 $14^{\circ}19'$

$28.10$   
 $25.43\frac{1}{2}$   
 $27.05\frac{1}{2}$   
 $21.02\frac{1}{2}$   
 $19^{\circ}24\frac{1}{2}$   
 $4.53$   
 $16^{\circ}58'$

INT

6474

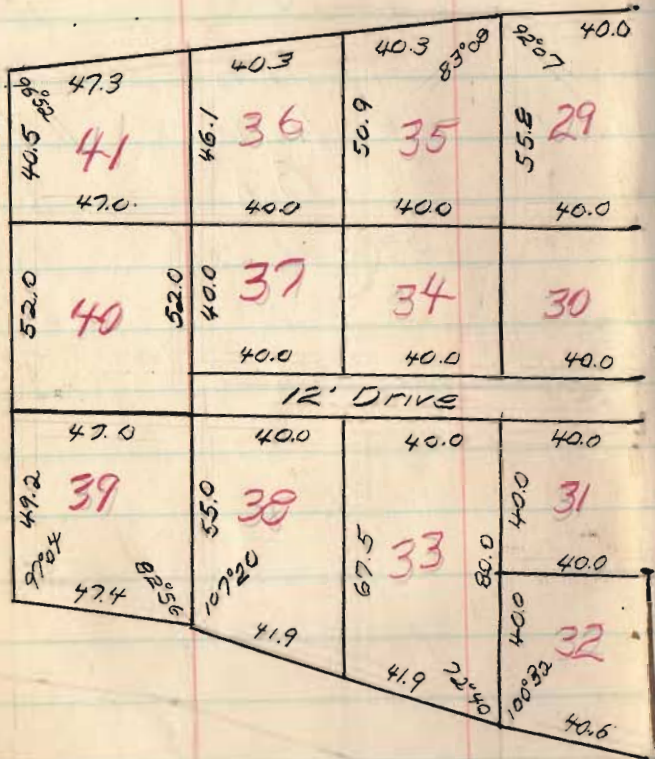
INDEXED ON MAP





# HOUSER

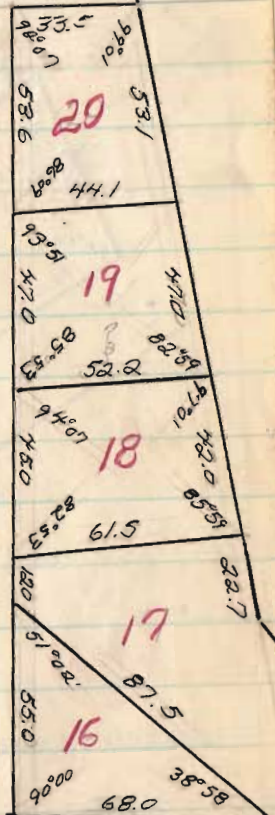
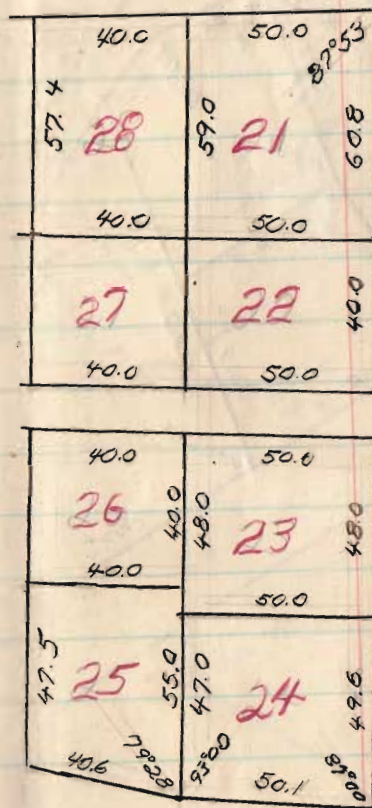
Iron at all corners



1957

14

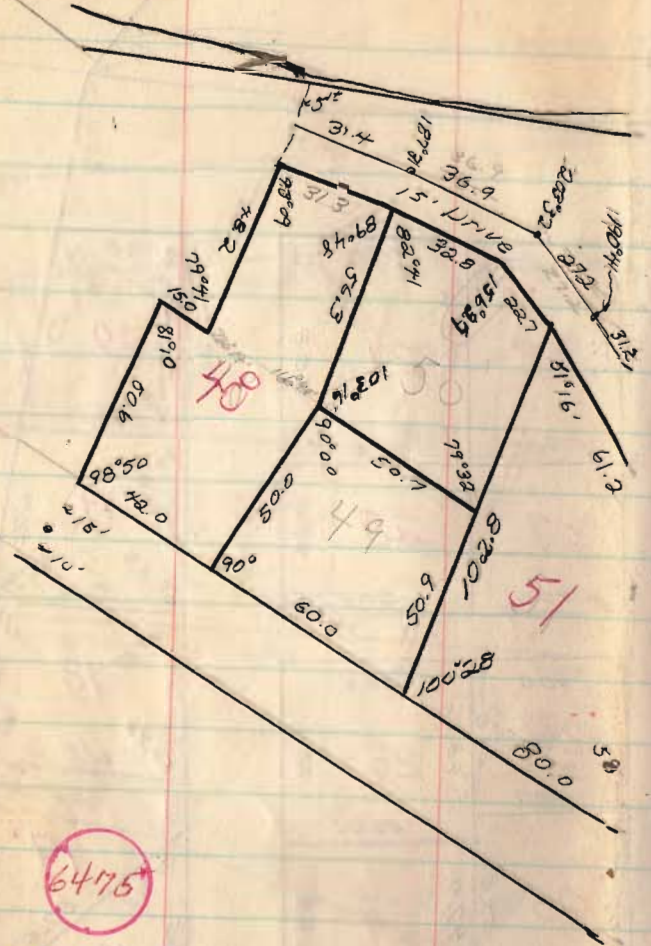
Pt. A



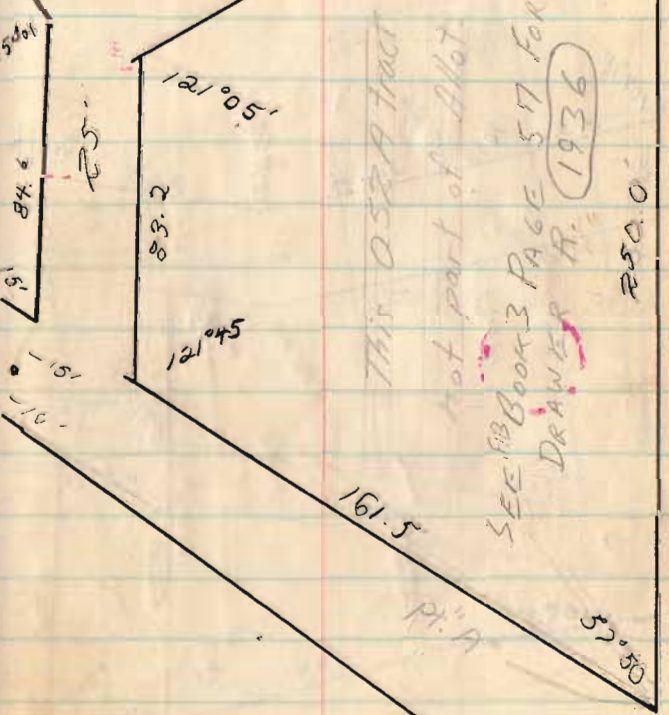
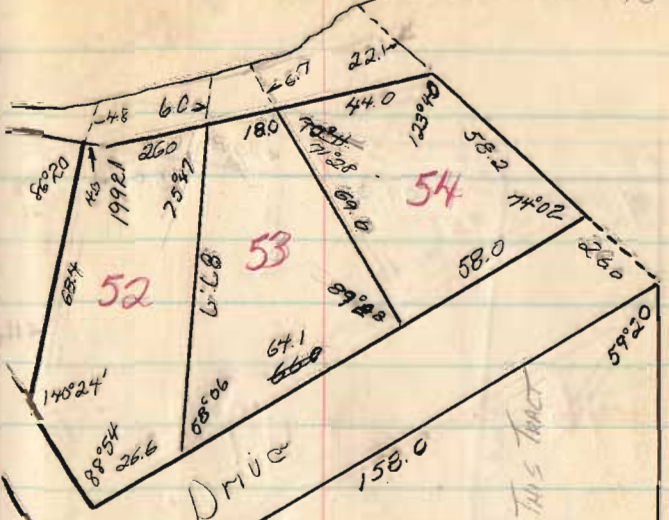
64-175

INDEXED ON MAP

HOUSERS

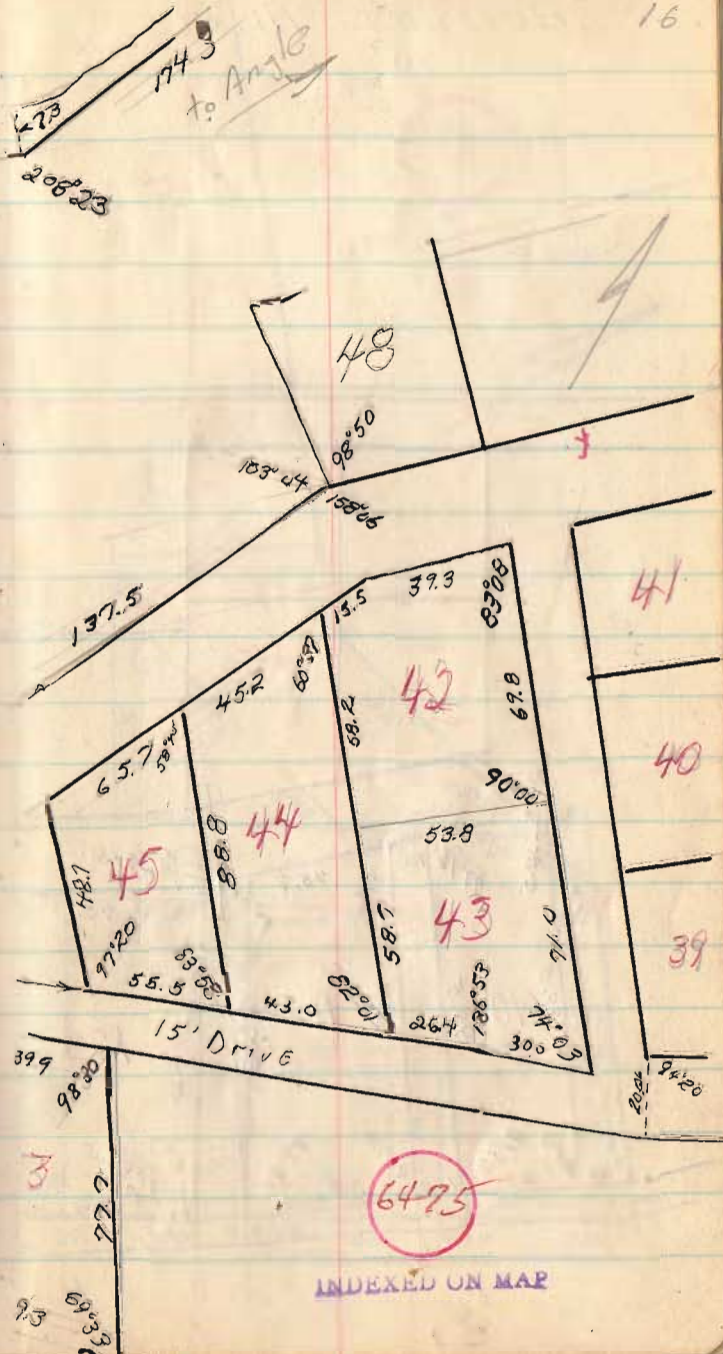
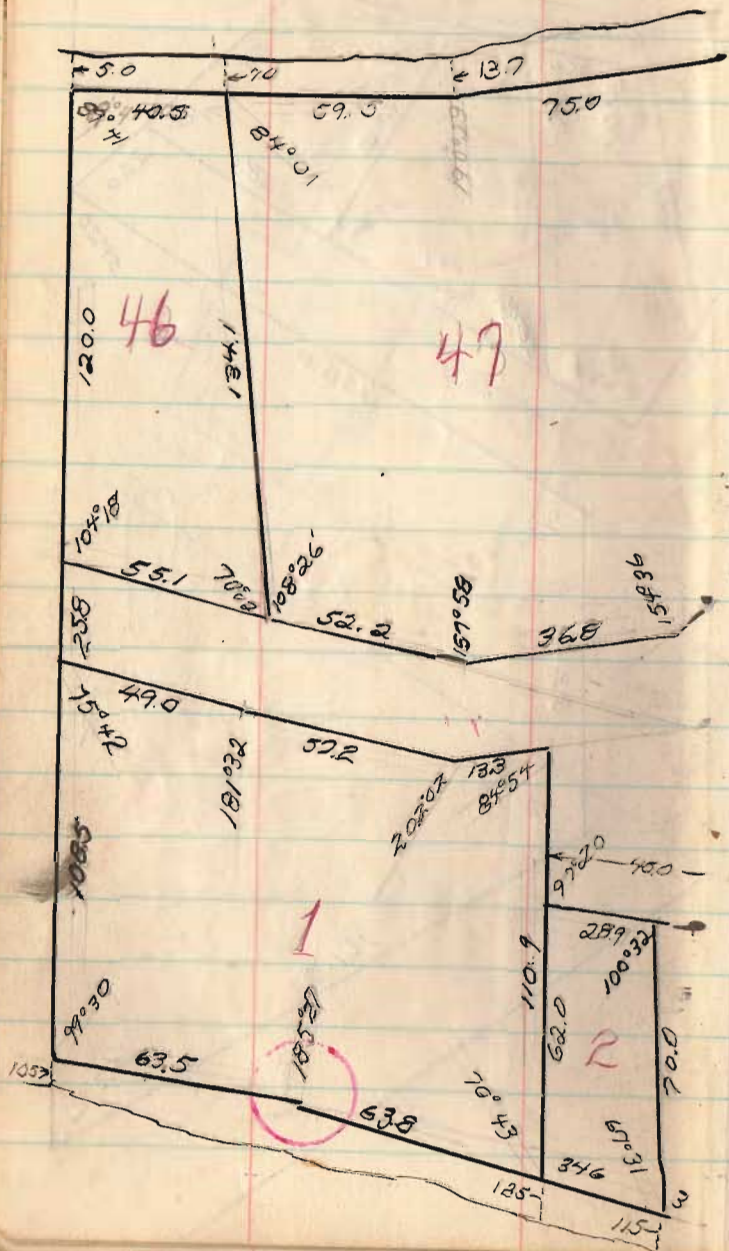


15





HOOPER'S ALLOT



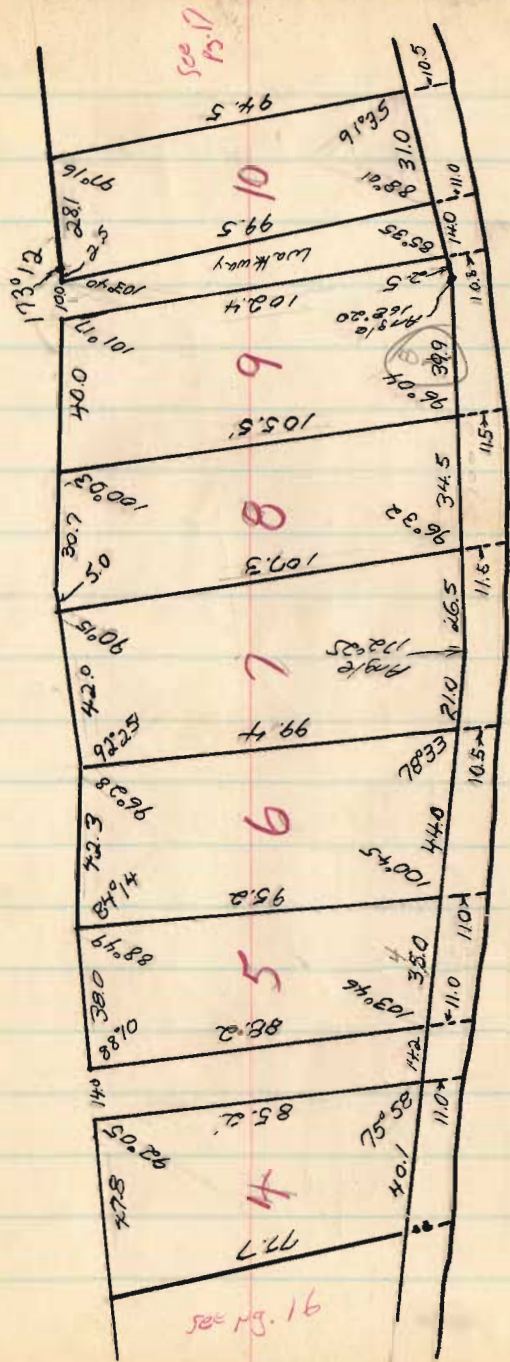
INDEXED ON MAP





6475

INDEXED ON MAP



8

for Summers  
wash. Twp.  
lots 79, 80, 81  
Five Park Allot.

July, 1961

20

6196

INDEXED ON MAP

41

88

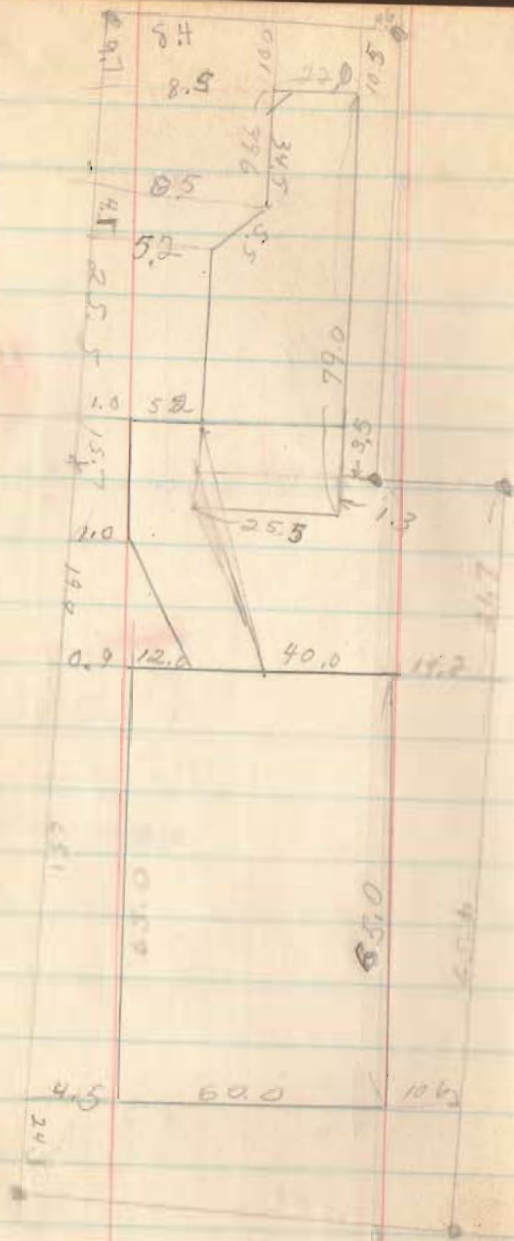
79





6176

INDEXED ON MAP



6176

INDEXED ON MAP



For Lake Hts #3

10.50  
1.50  
12.00  
1400

3152

INDEXED ON MAP

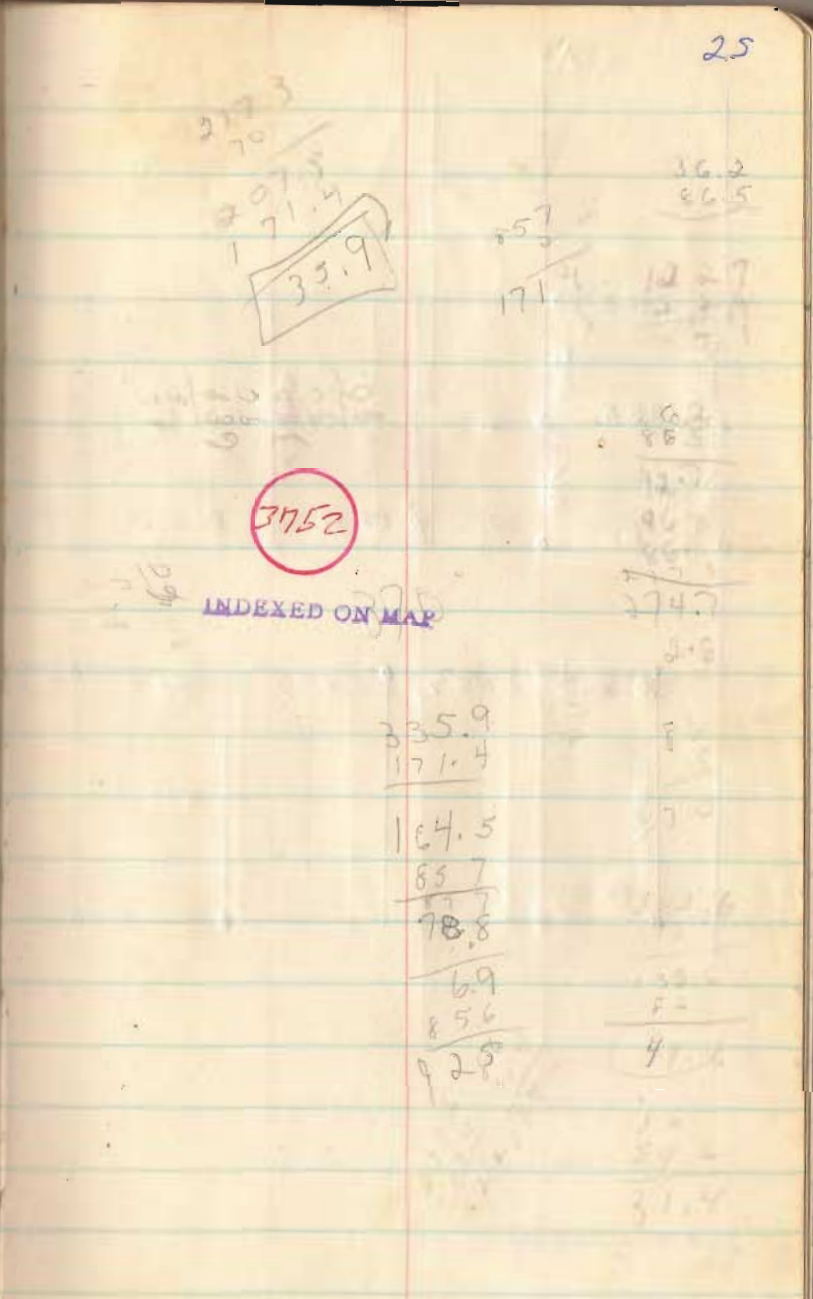
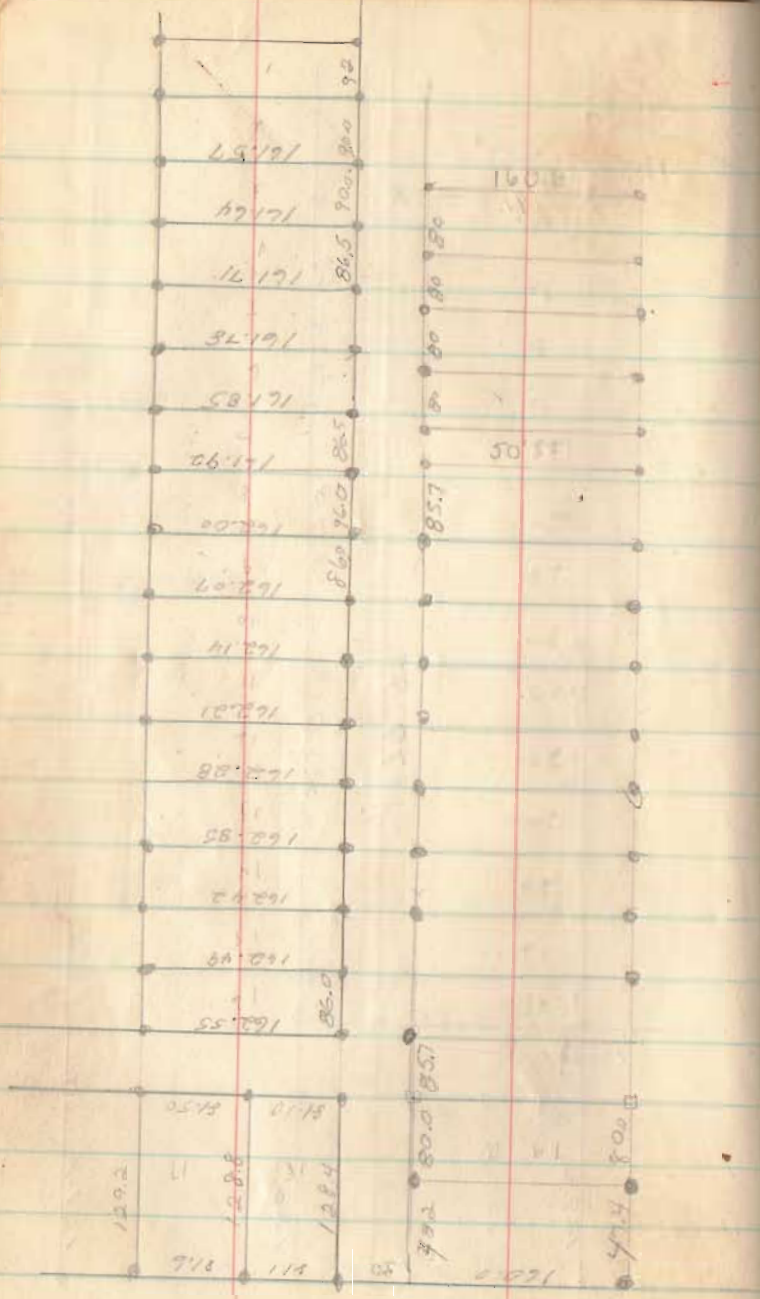
170-15  
87-39  
90 19

17-50  
90-15  
17 65

1964

24





212.3  
70  
207.3  
171.4  
335.9

375.2

INDEXED ON MAP

335.9  
171.4  
104.5  
85.7  
78.8  
6.9  
85.6  
92.5

36.2  
26.5  
171.4  
12.27  
2.27  
12.0  
96  
95  
274.7  
2.8  
5  
7  
4  
31.4





Huron Ave.

162.07	86.0	80.7	153			
	162.00	4137	161.91	4138	4139	161.78
	86.0	96.0		86.5	86.5	

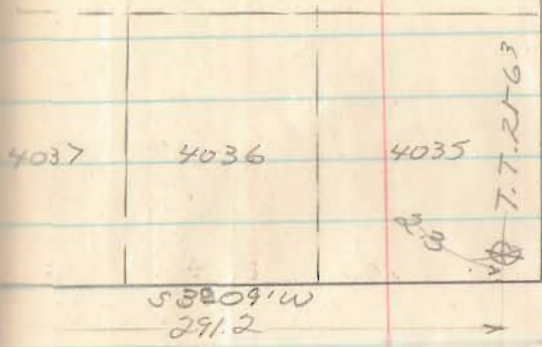
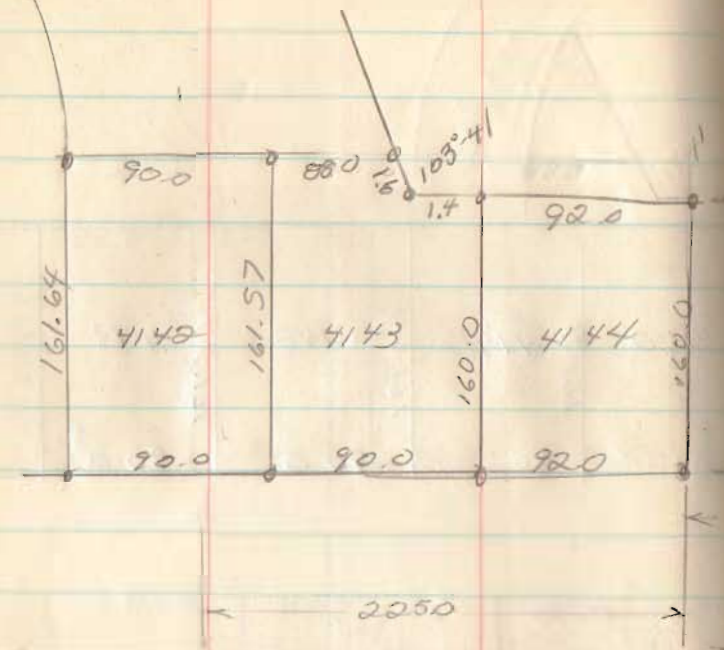
	4140	4141	4142	4143	
161.71	161.64	161.57			
86.5	86.5	90.0	90.0 <sup>50</sup>		

85.7	85.7		80.0	80.0	80.0	80.0 <sup>90</sup>
			4148	4147	4146	4145
85.7	90.4	39.0	50.0 <sup>57</sup>			160.0
	46.7					

3752

INDEXED ON MAP

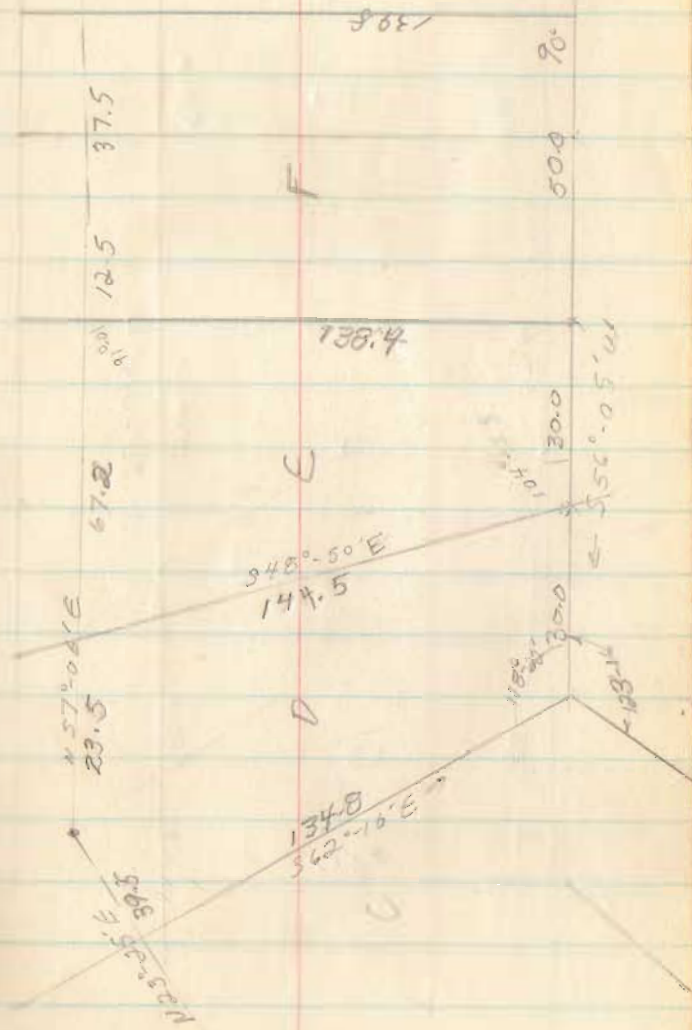
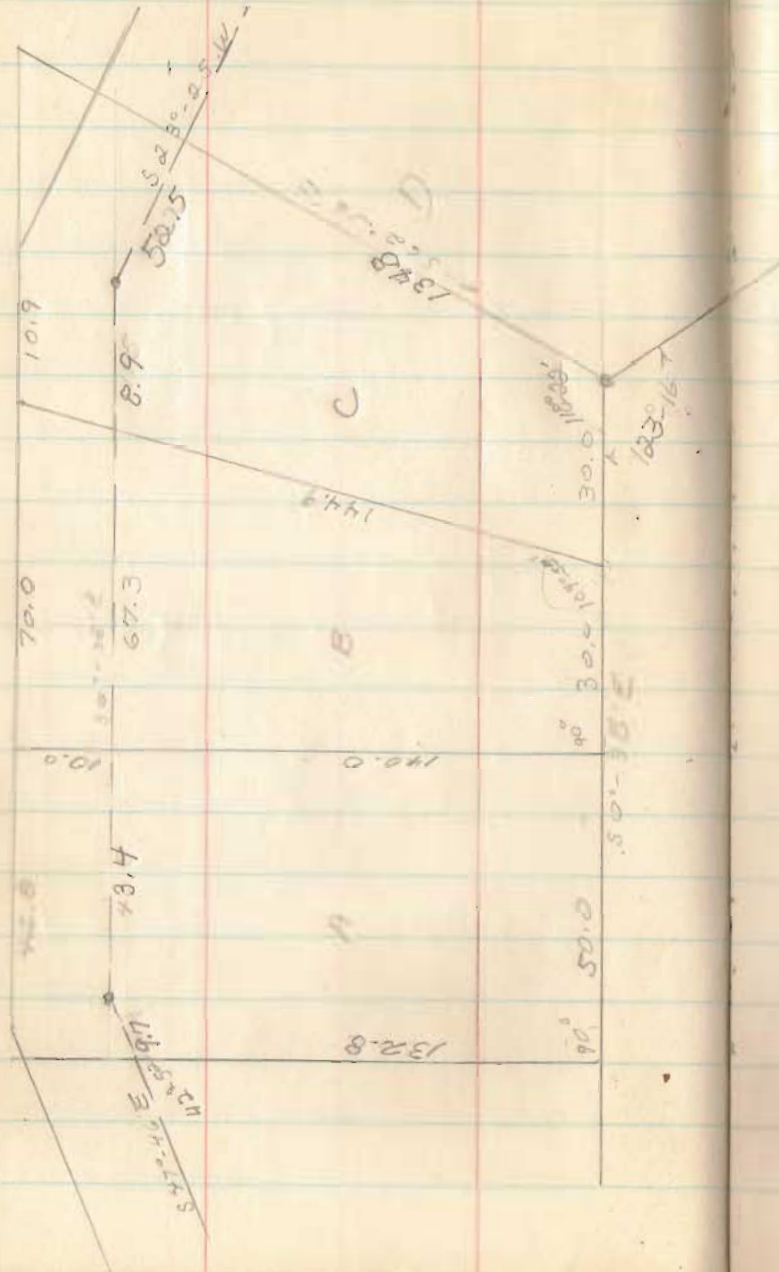




4145  
160.0  
4043  
Morris  
ALLOT.

3752

INDEXED ON MAP





50

8.5E1

G

50.0

12.6

37.4

H

50.0

S 56°-05' W

50

I

50.0

F



J

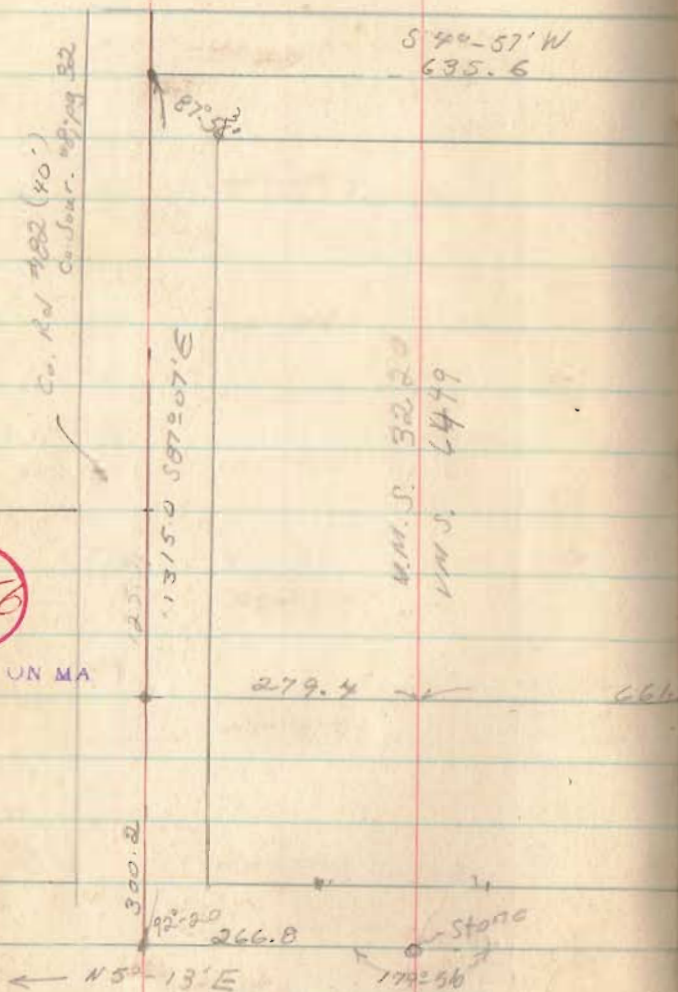
50.0

S 56°-05' W

Jan 1966 37

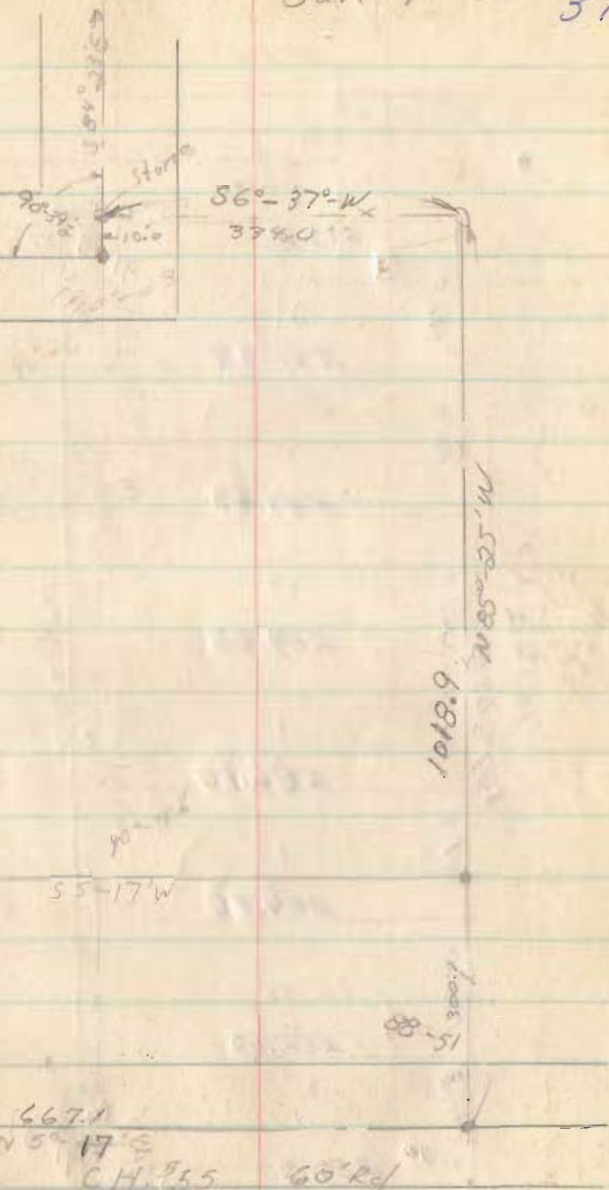
3756

INDEXED ON MA



Sac Co. Engr. F.B. 607

25 3/4 44

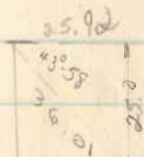
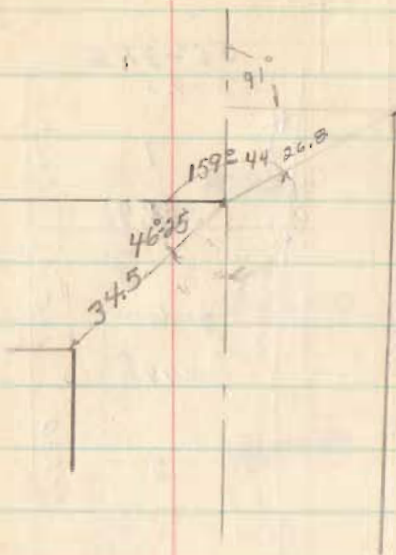


667.1  
N 50-17' E  
C.H. 9.55

60' Rd







3756

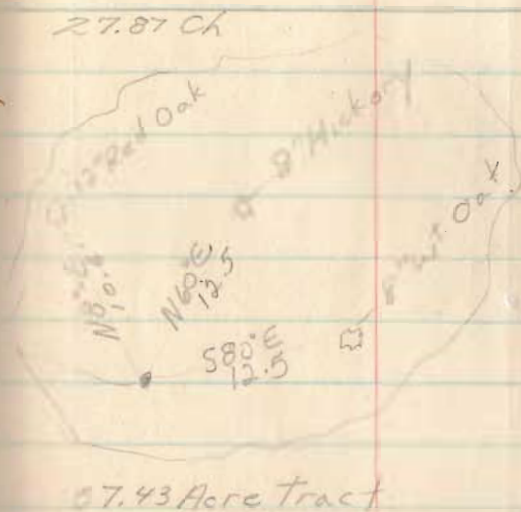
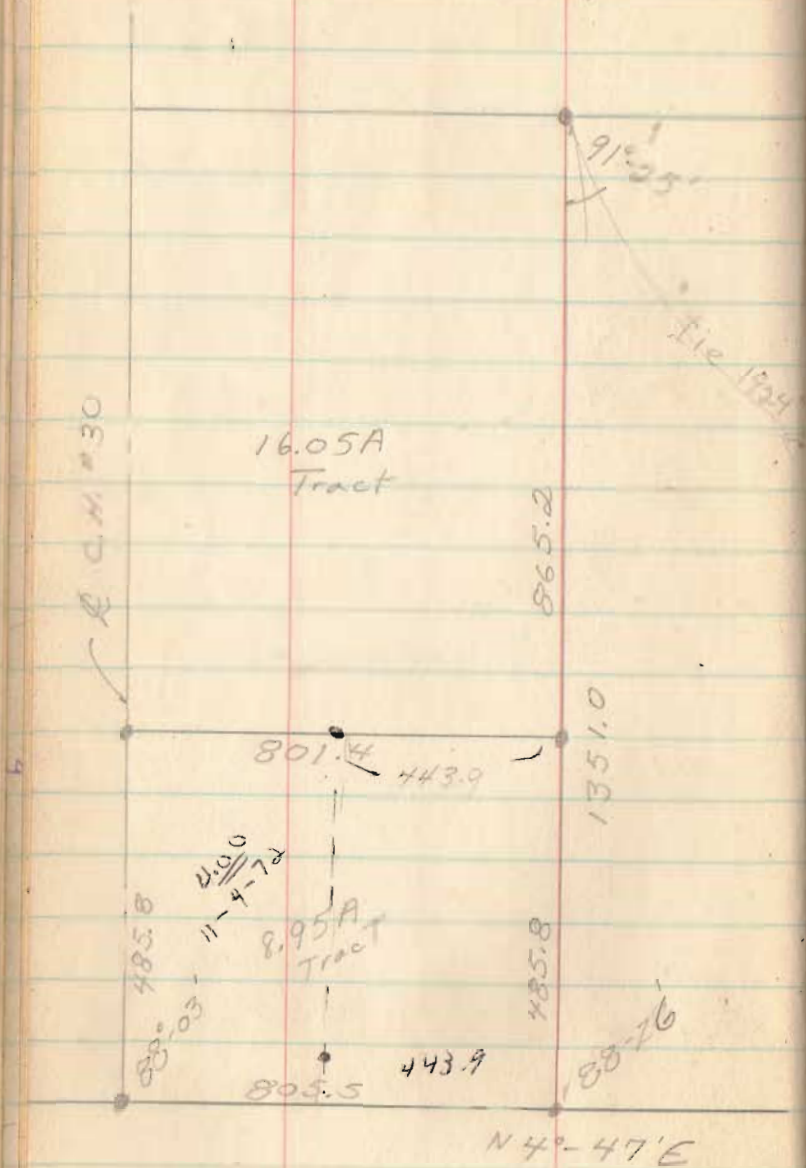
INDEXED ON MAP



John Claxton  
 Sec. 29, T-5, R-13;  
 Liberty Twp

R 2

41

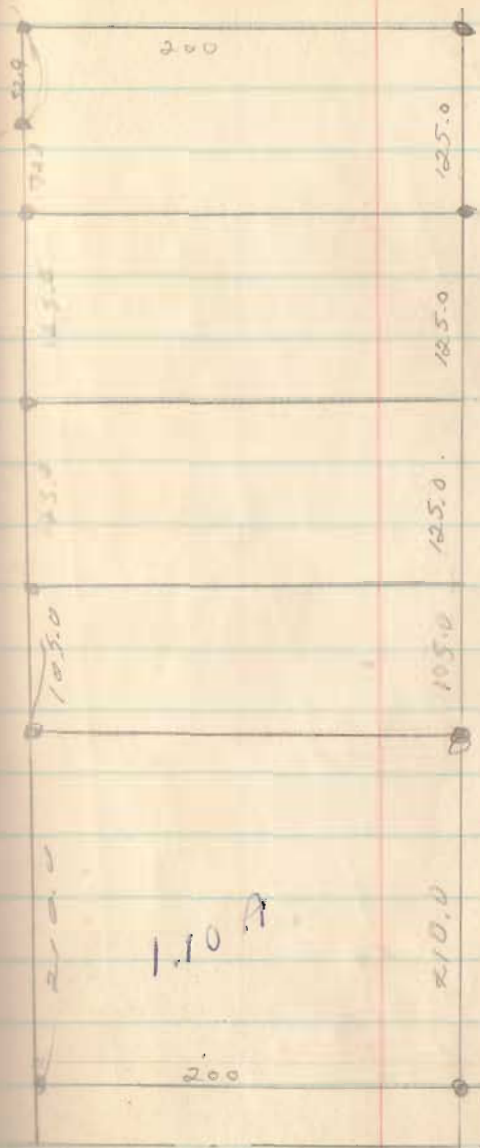
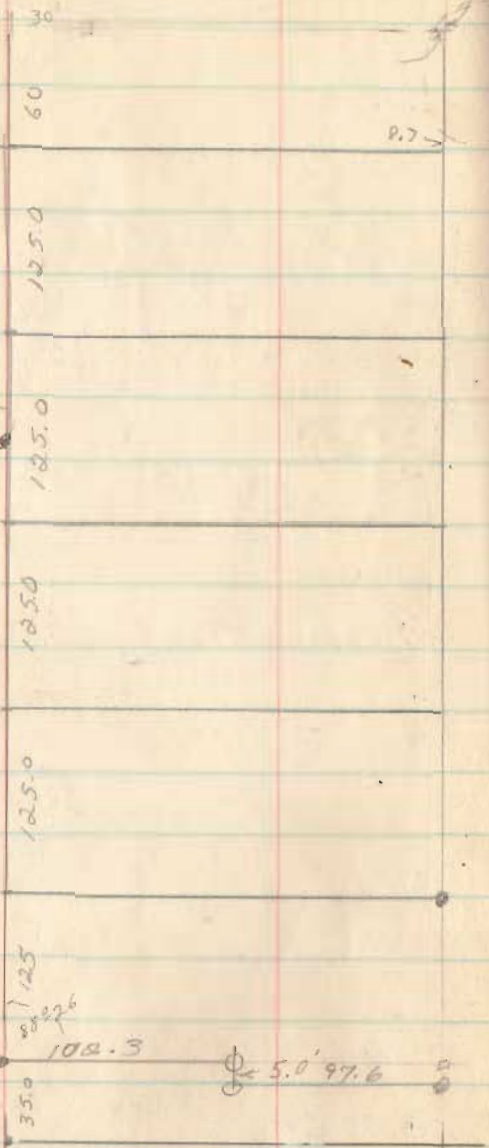


3769

INDEXED ON MAP

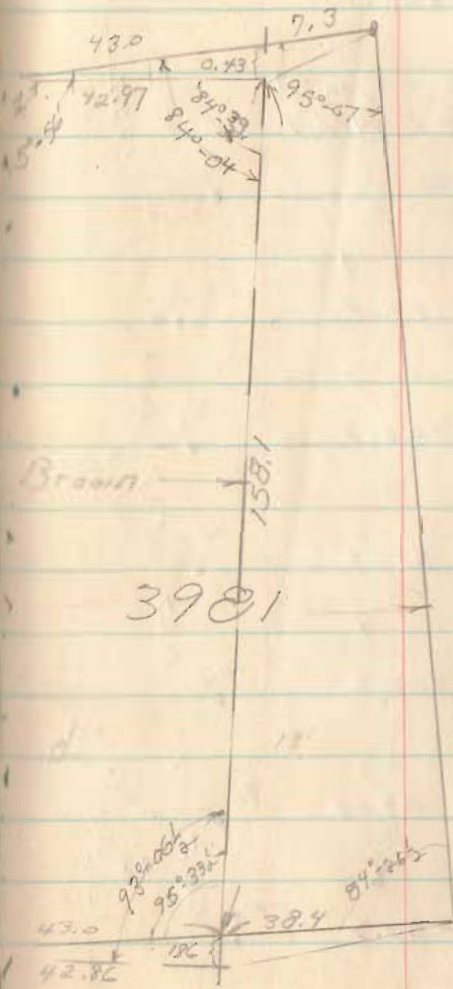
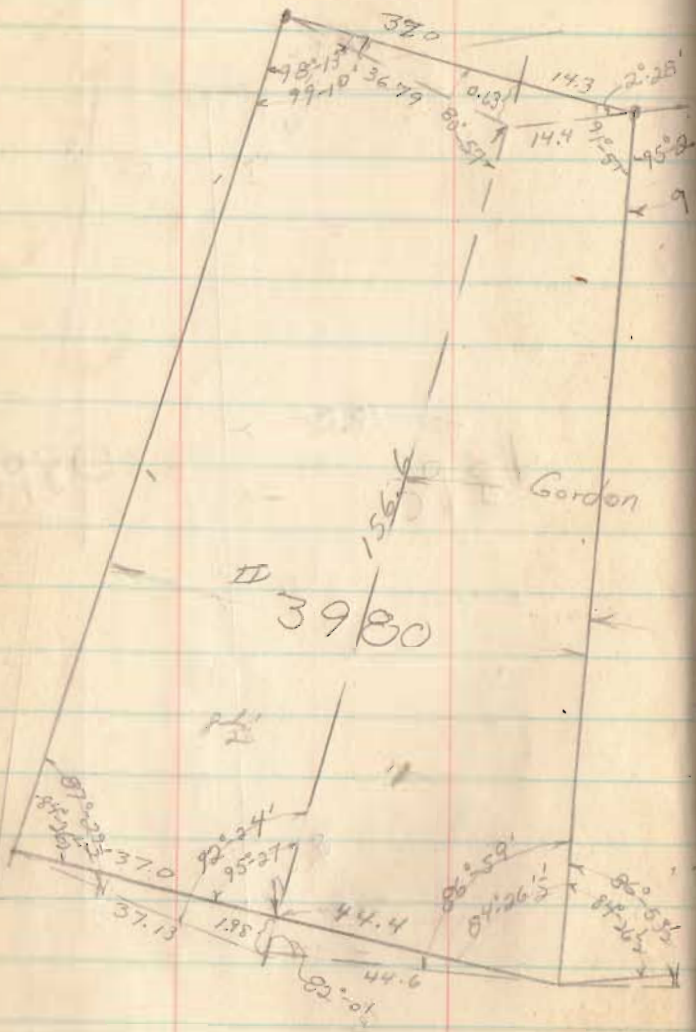
28.33 Ch  
 S.H. #68

b





1966 44



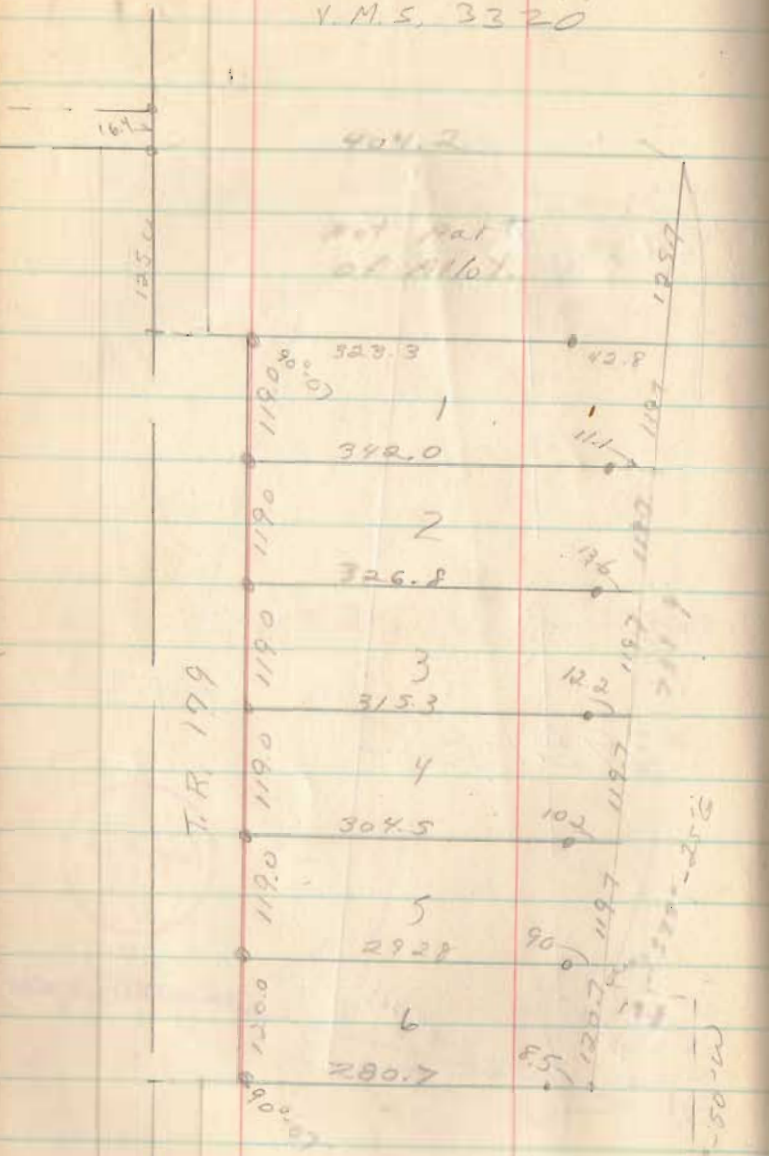
51  
 127  
 112  
 112  
 112  
 112

171-28

6474

INDEXED ON MAP

Cook Allotment  
JEFFERSON TWP.  
V.M.S. 3320



July, 1965

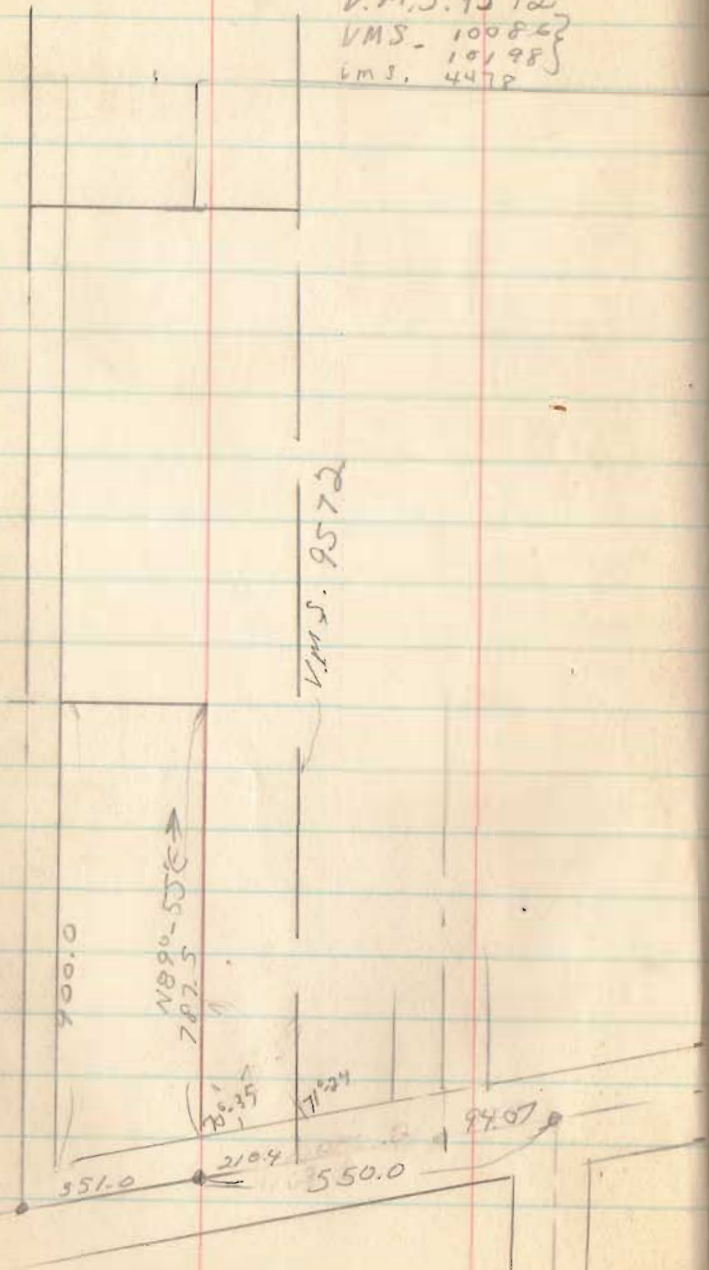
45

4032

INDEXED ON MAP

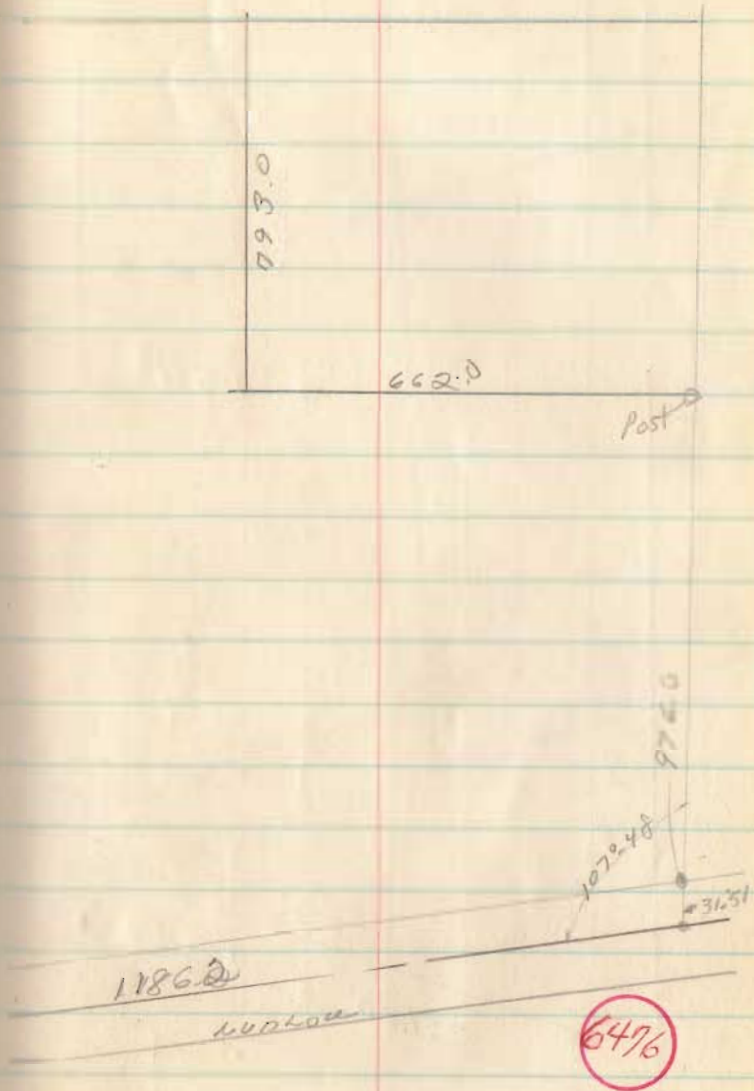


T. C. Vaniga  
V.M.S. 9572  
V.M.S. 10082  
V.M.S. 10198  
V.M.S. 4478

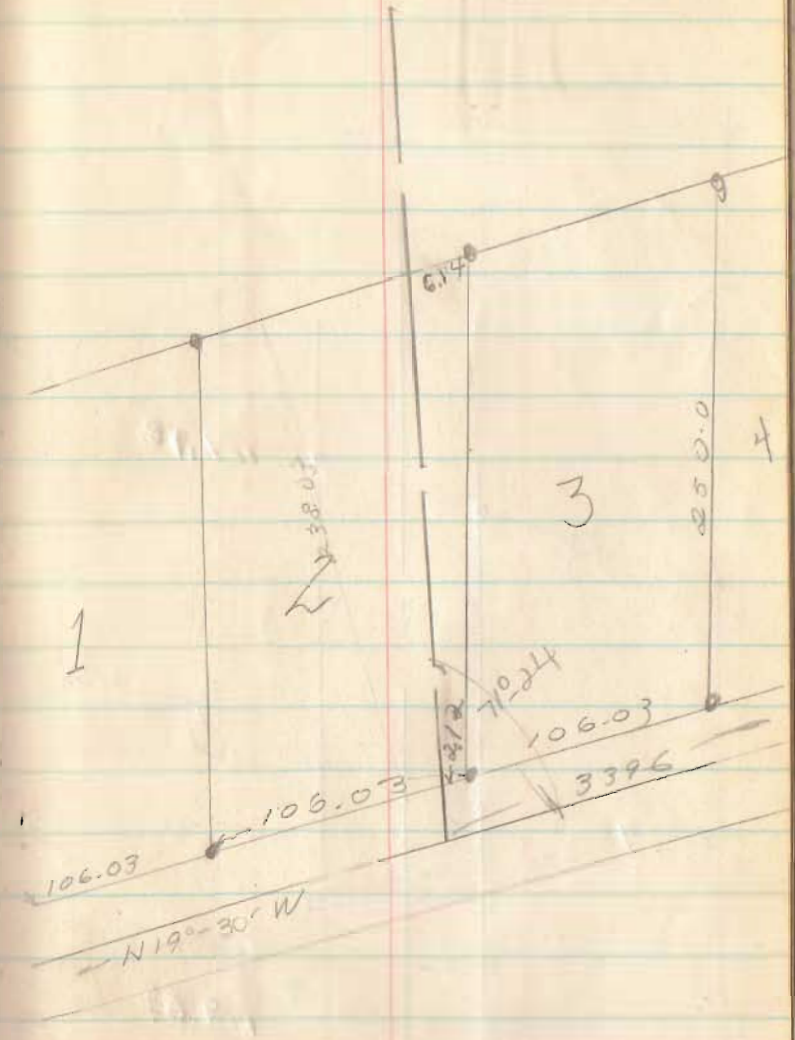


Lake Top

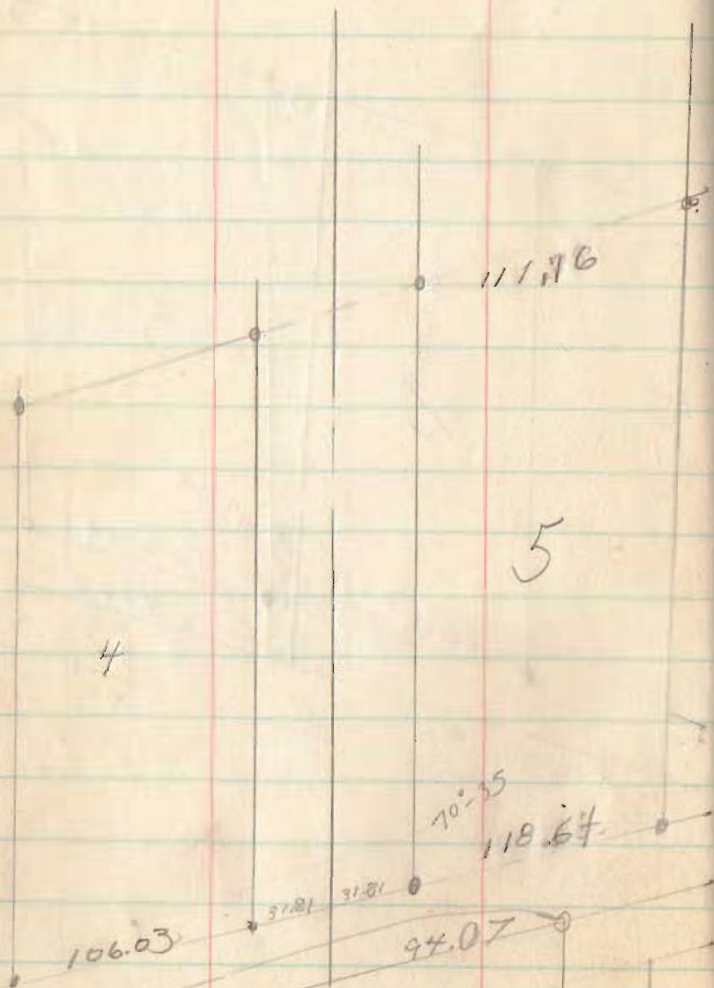
47



INDEXED ON MAP

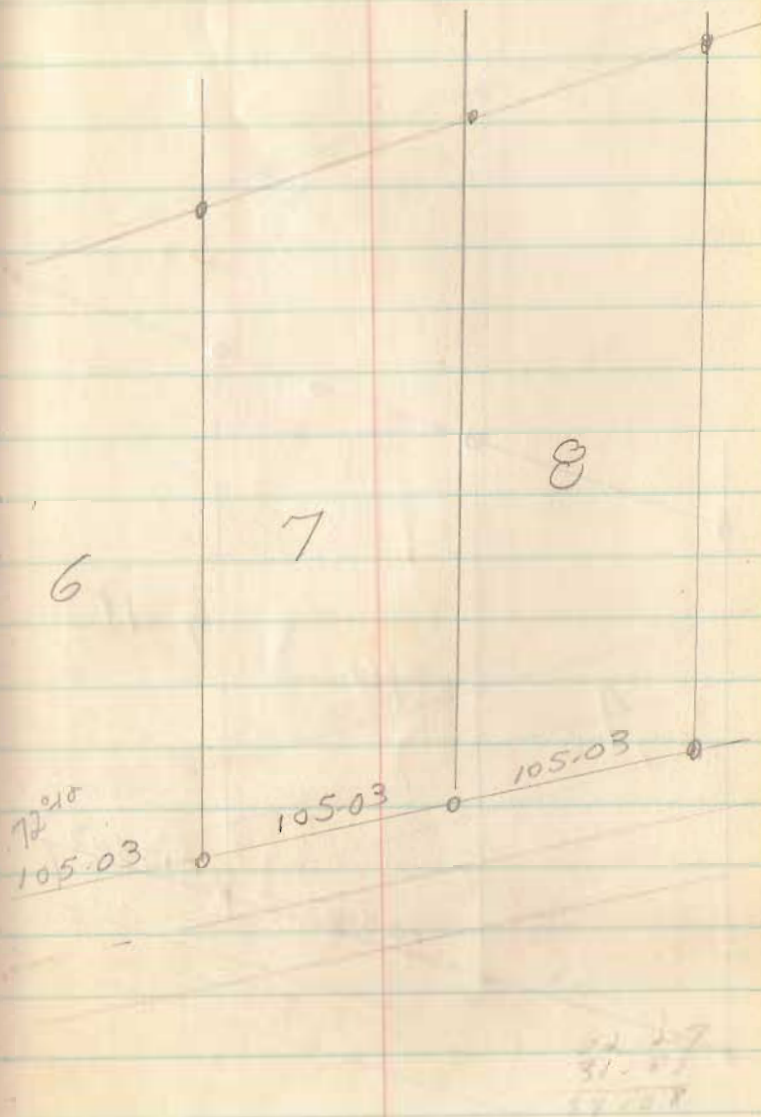






4

5



6

7

8

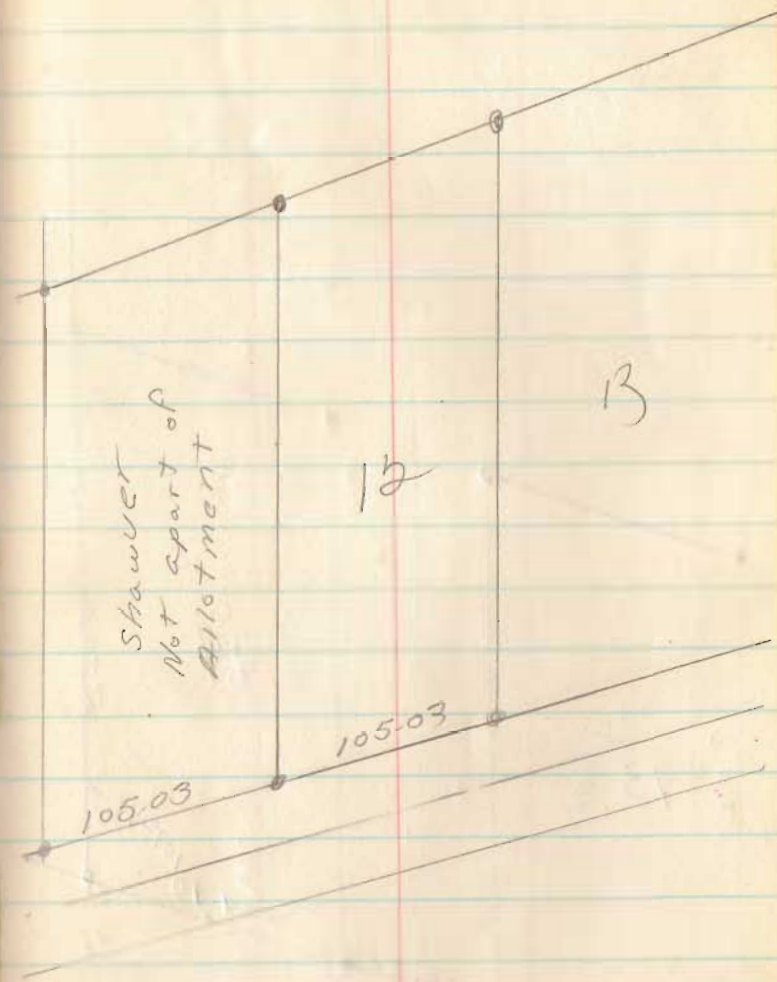
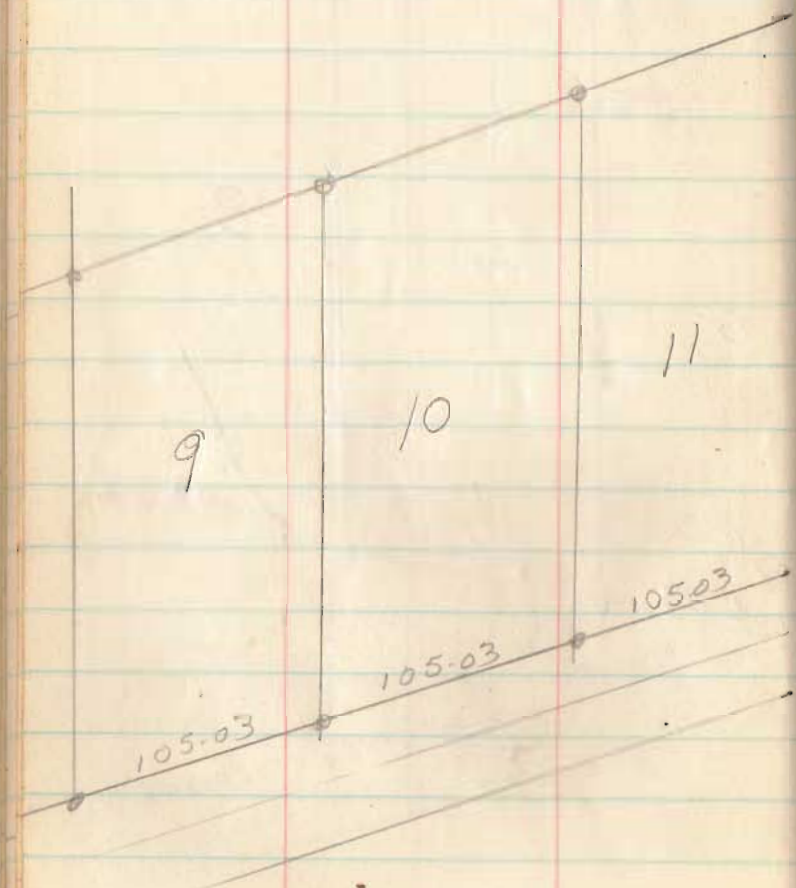
72.18

105.03

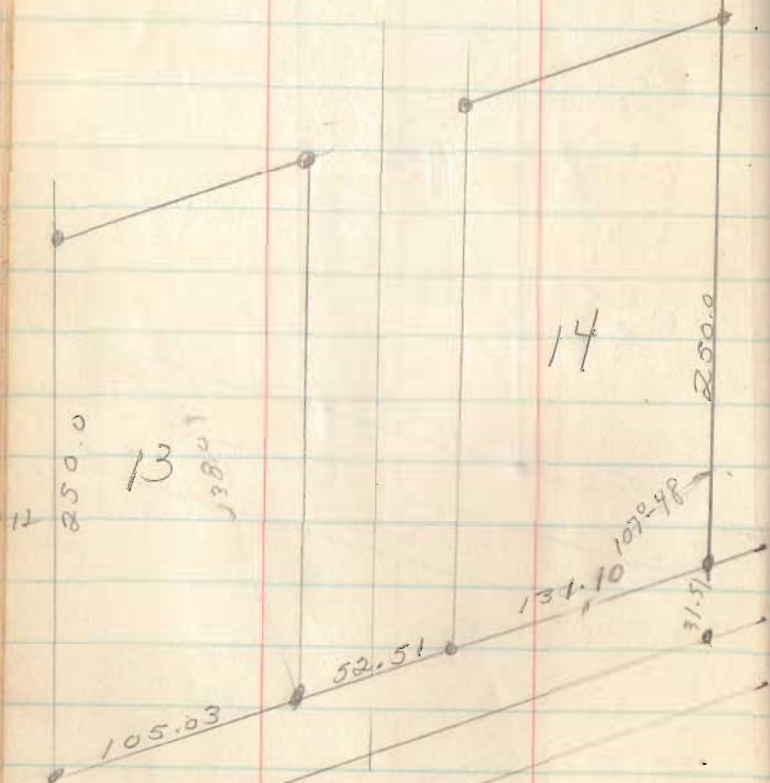
105.03

105.03

31.81  
31.81  
57.81







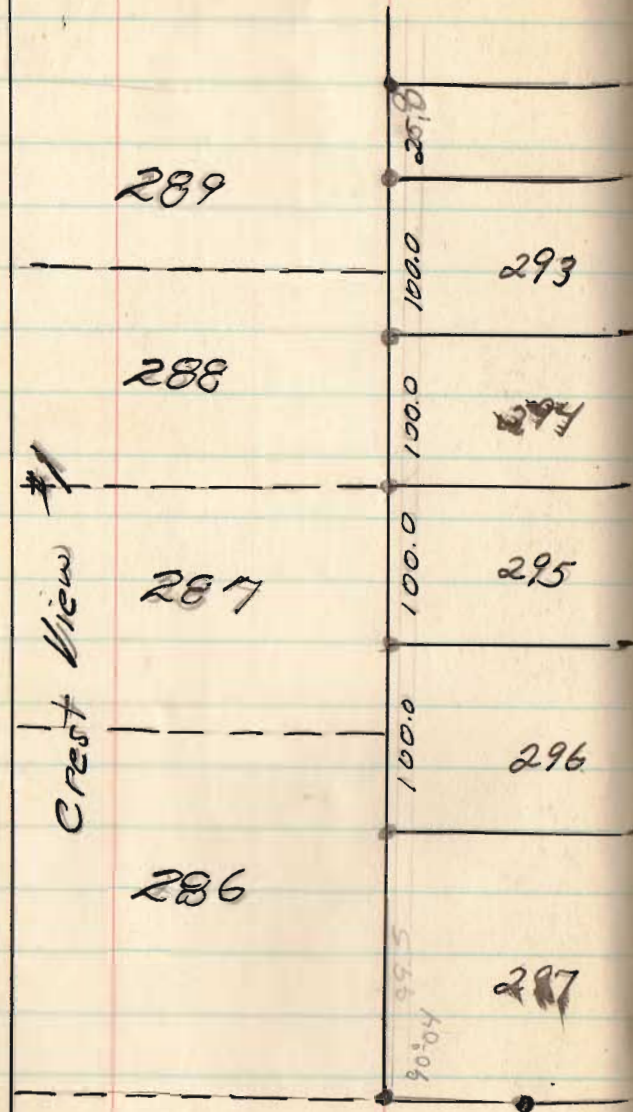
CREST VIEW #2  
DEGRAFF

Nov., 1966

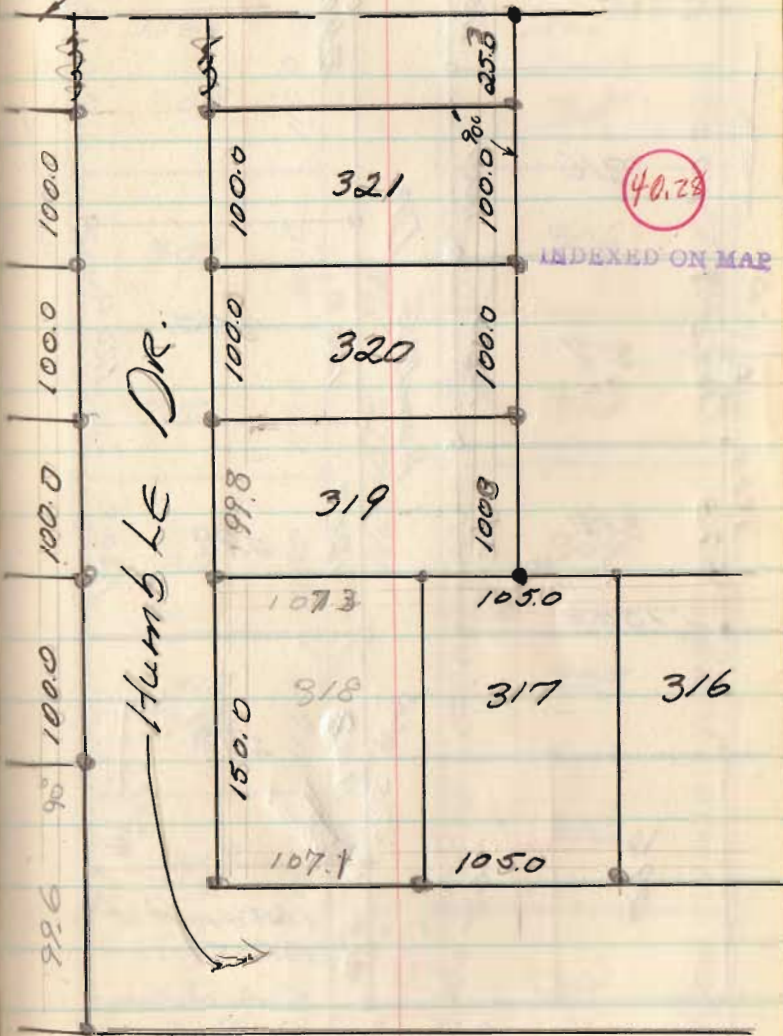
53

Co. Rd. #43

Crest View #1



Corp. Line



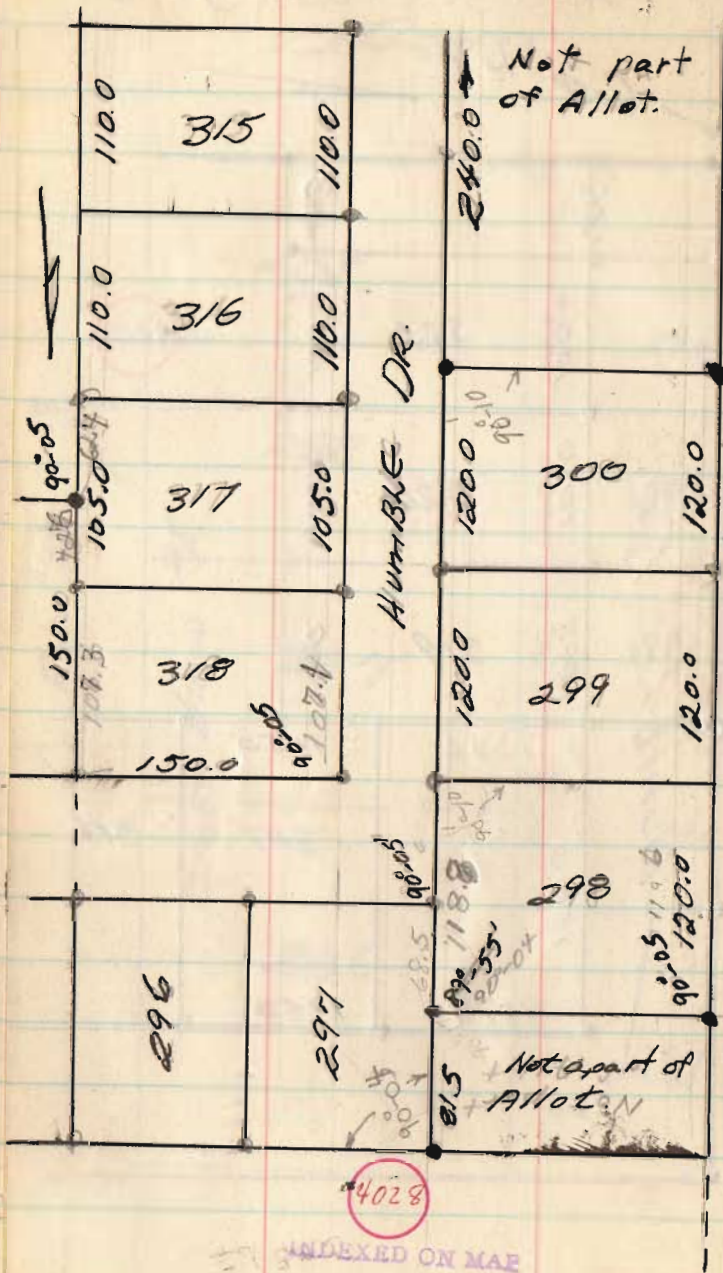
HUMBOLDT DR.

40.28

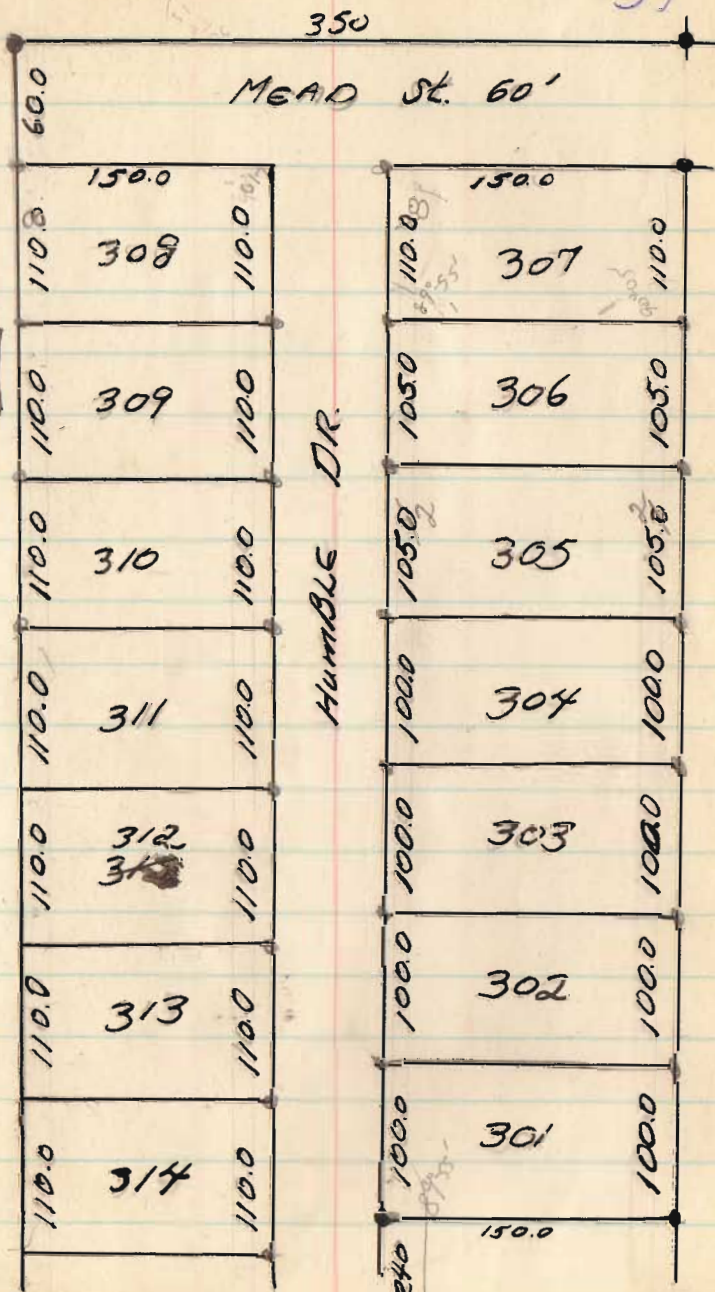
INDEXED ON MAP



CREST VIEW #2



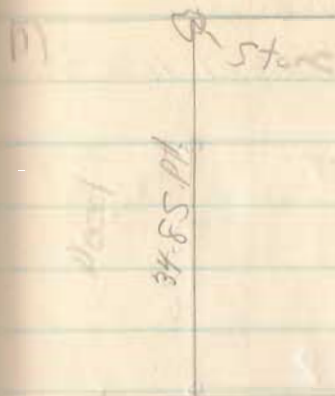
INDEXED ON MAP





May, 1967

57



4110

INDEXED ON MAP

See Next  
 Page

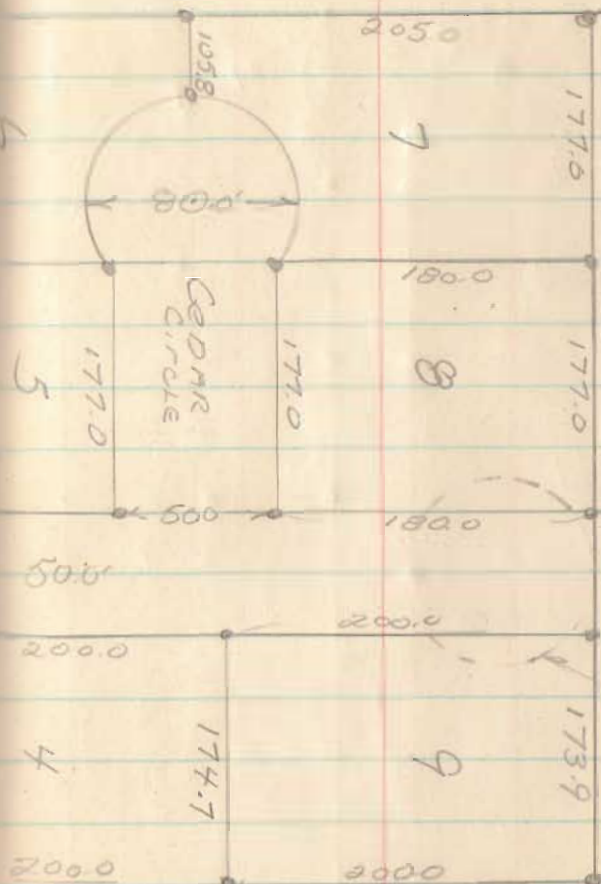
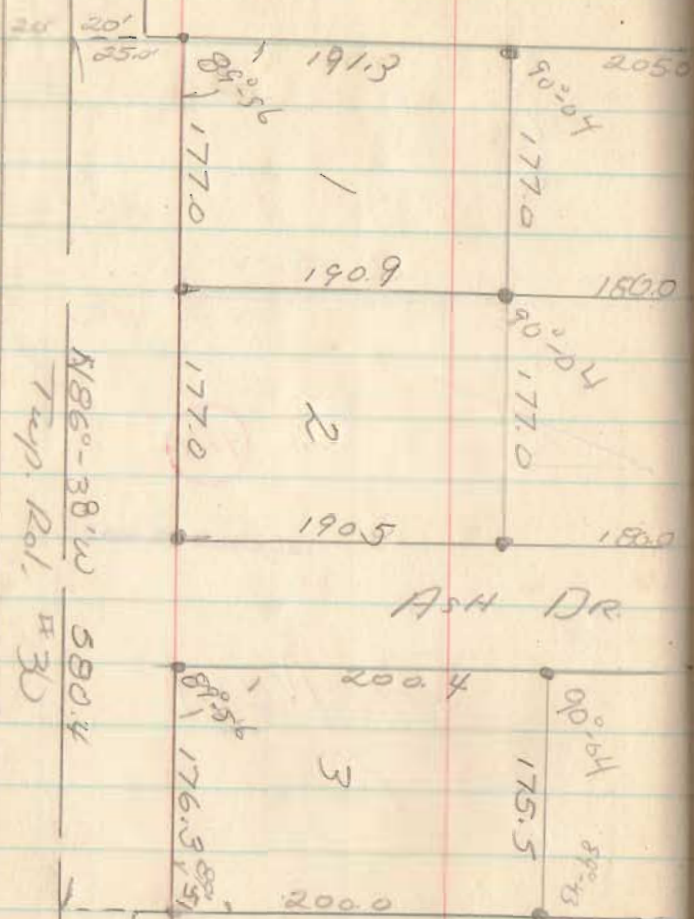


CEJDAR HTS  
 SEC. 29 T-5, R-13  
 LIBERTY Twp

Paul Hodey

1875A

58



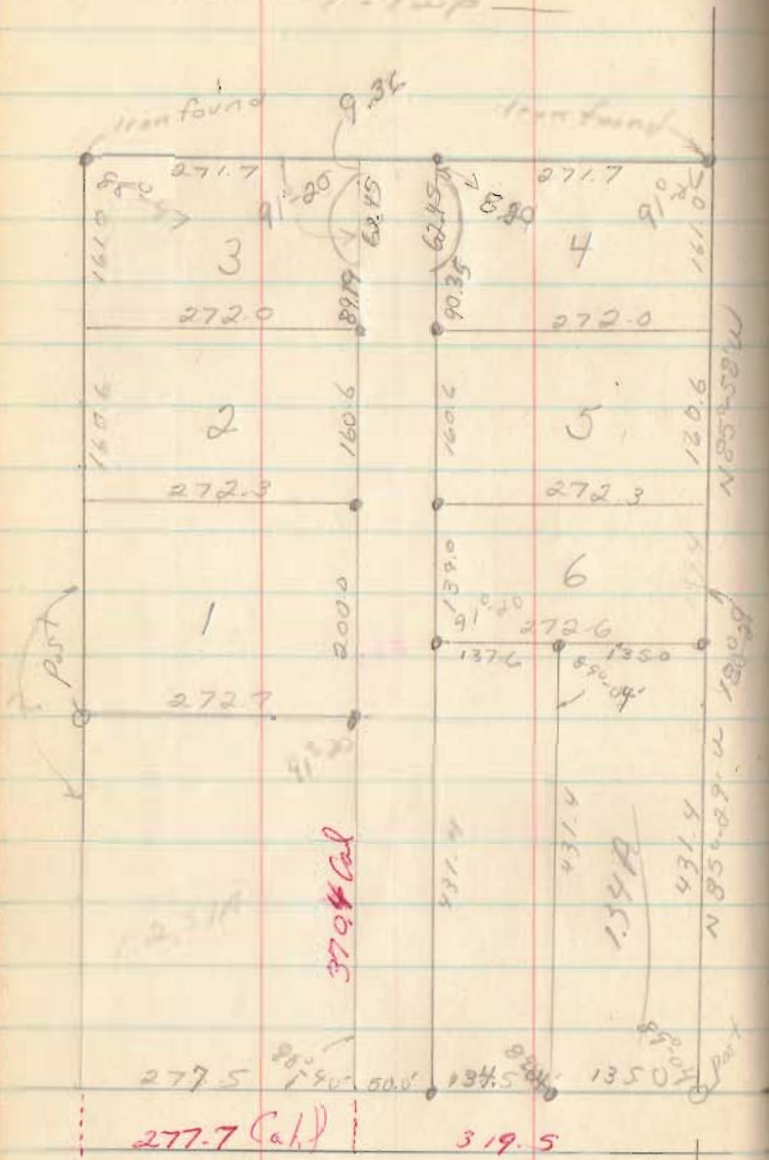
4110

INDEXED ON MAP

For BARRETT  
LIBERTY TWP

June 26

60

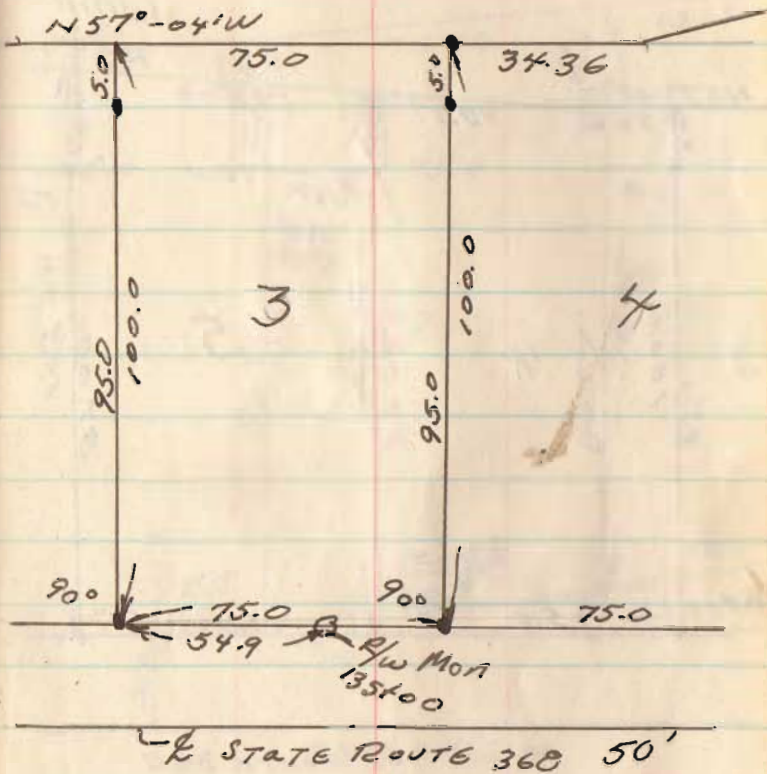
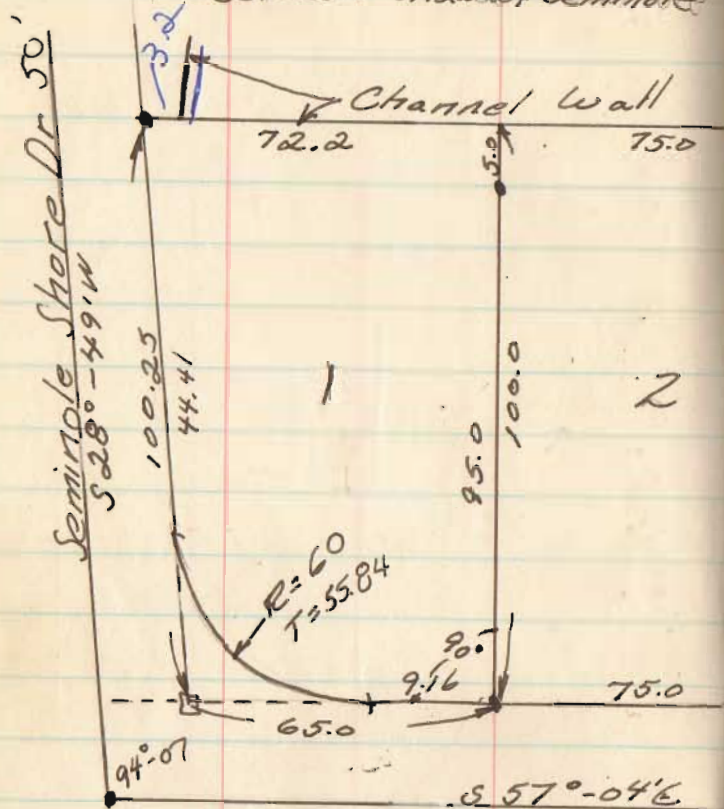




CRANBERRY SUBD #2  
 V.M.S. 12276  
 STOKES Twp  
 Between Shawnee & Seminole

Aug, 1967

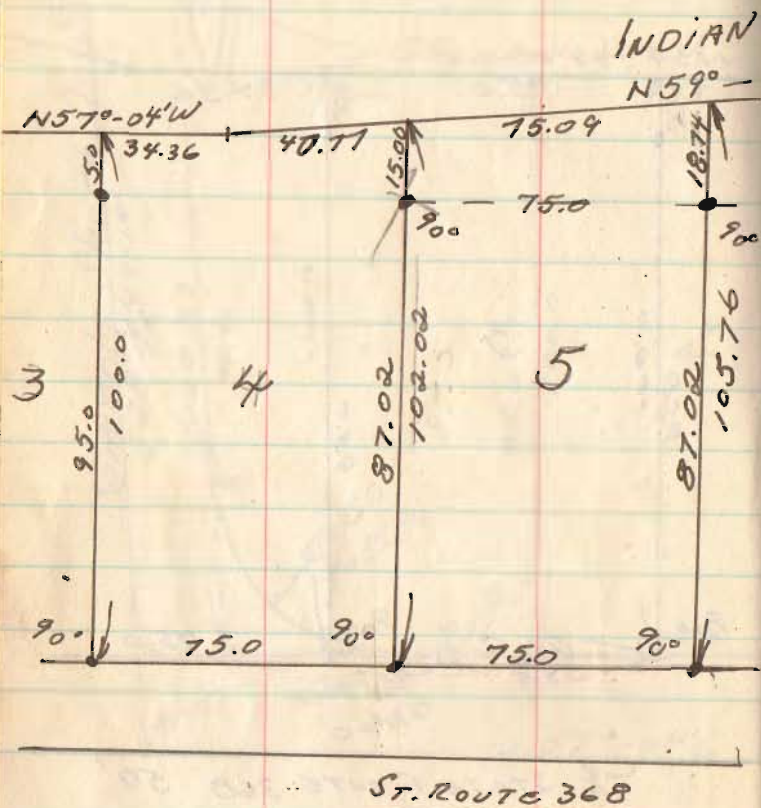
62



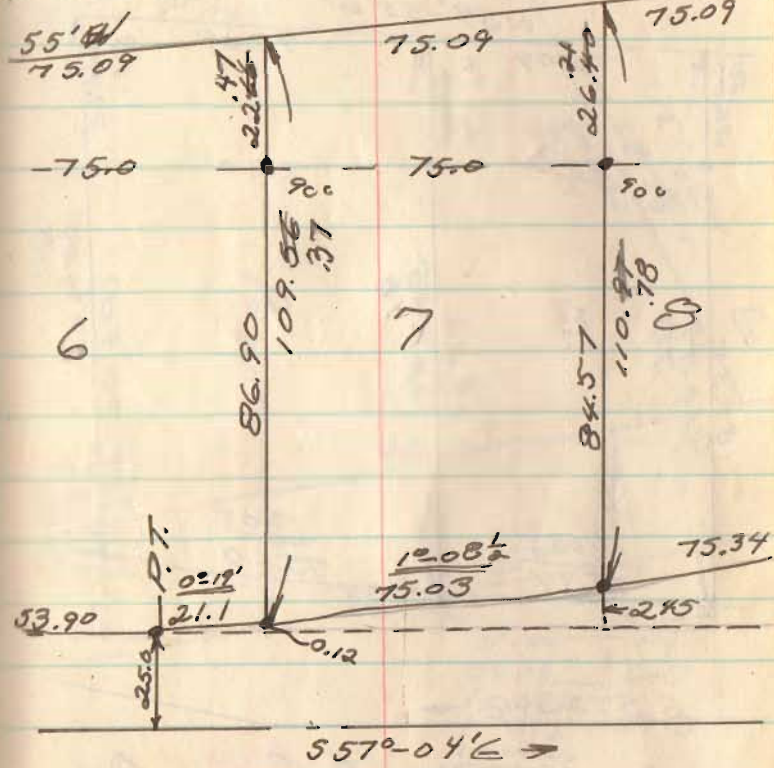
4228

INDEXED ON MAP

CRANBERRY #2



LAKE

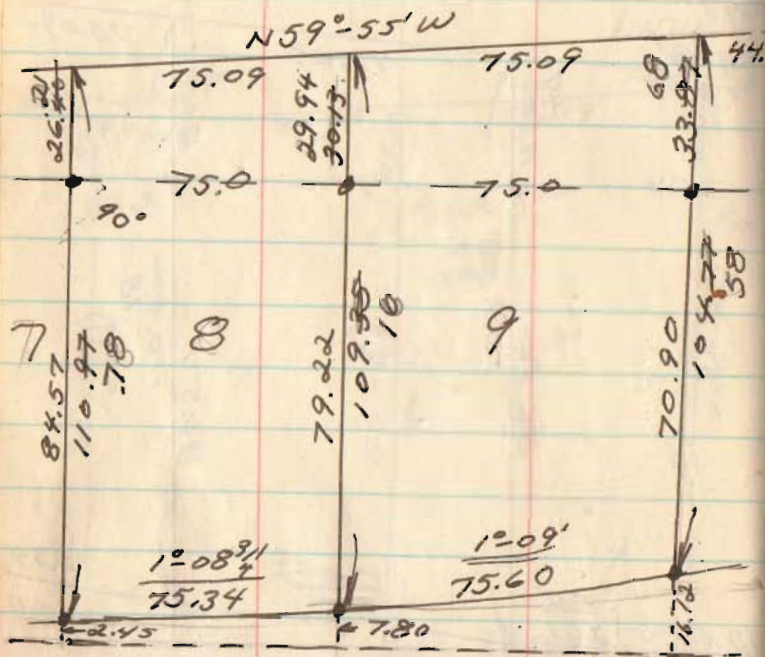


4228

INDEXED ON MAP



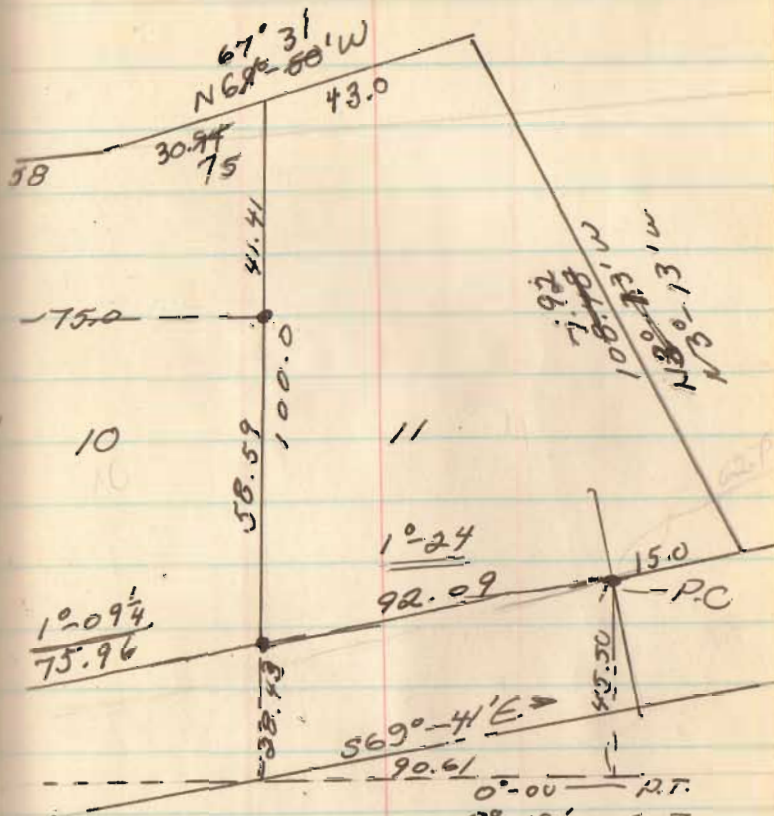
# CRANBERRY #2



S 57°-04'E →

## New E Curve Data:

P.I. 130+66.83  
 $D = 12^\circ-37'$   
 $D = 3''$   
 $R = 1909.86$   
 $T = 211.14$   
 $E = 11.64$   
 $L = 420.56$

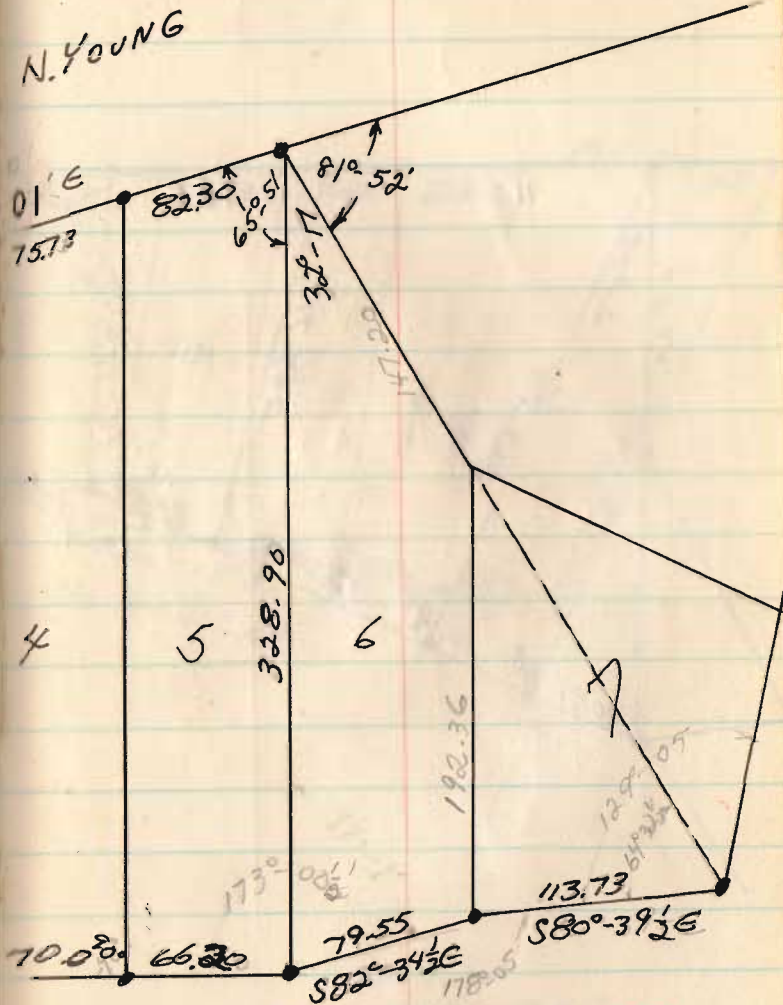
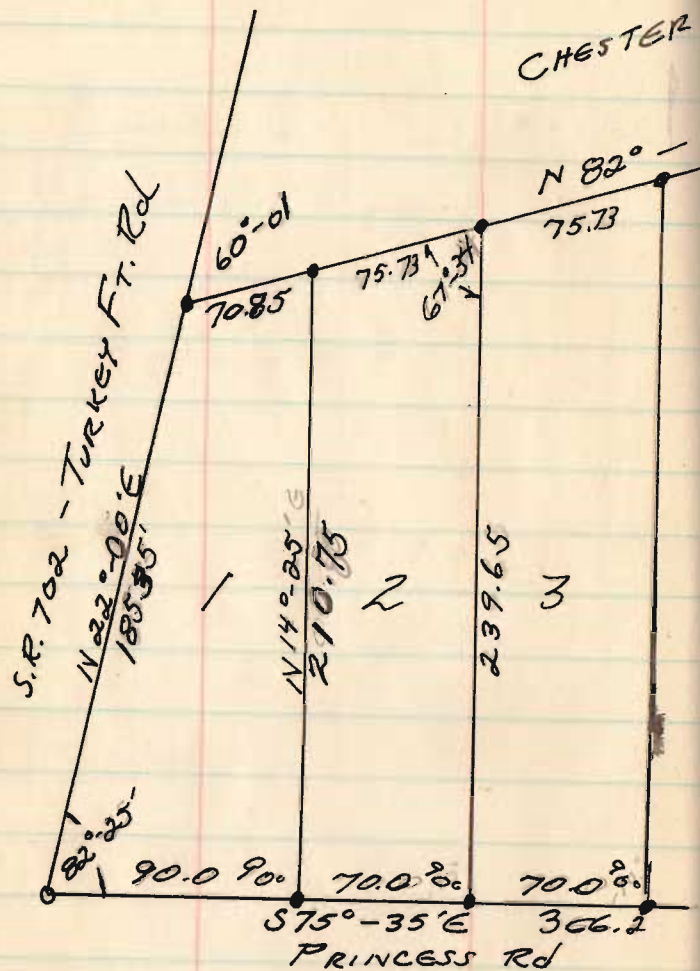


4228

INDEXED ON MAP

$\frac{1}{2}D = 6-18\frac{1}{2} - P.C.$

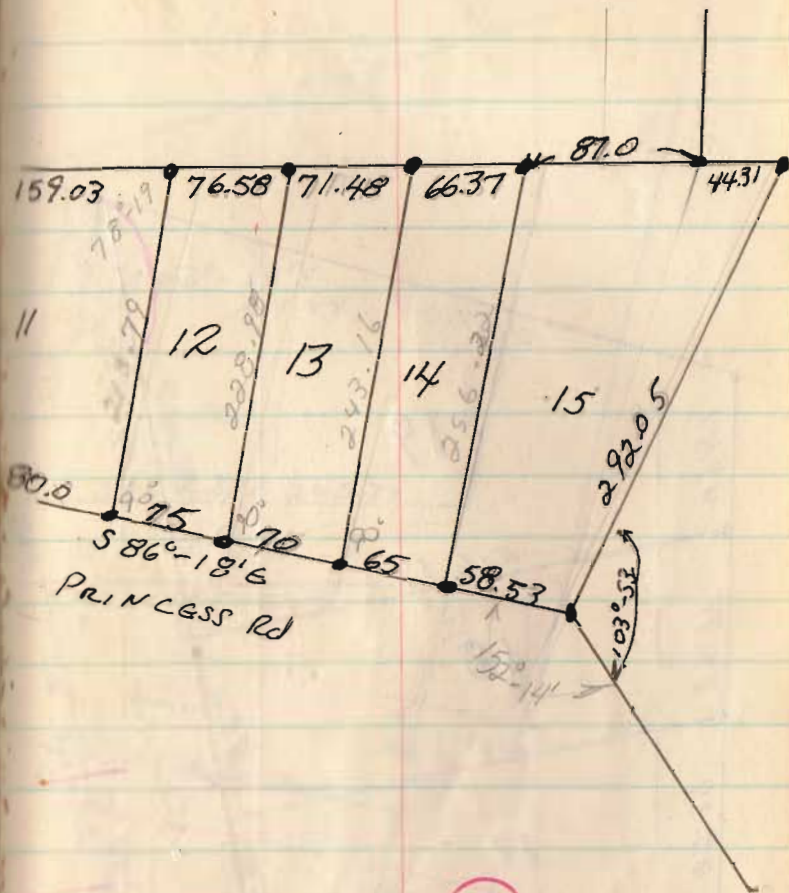
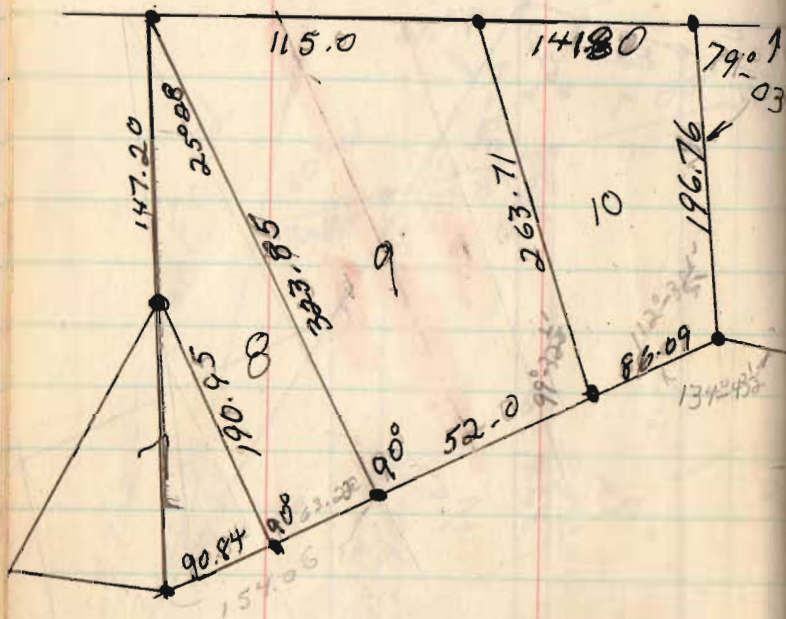
0'-00	P.T.
0'-19'	6-7
1'-08 1/2	
1'-27 1/2	7-8
1'-08 3/4	
2'-36 1/4	8-9
1'-09	
3'-45 1/4	9-10
1'-09 1/4	
4'-54 1/2	10-11
1'-24	



4484

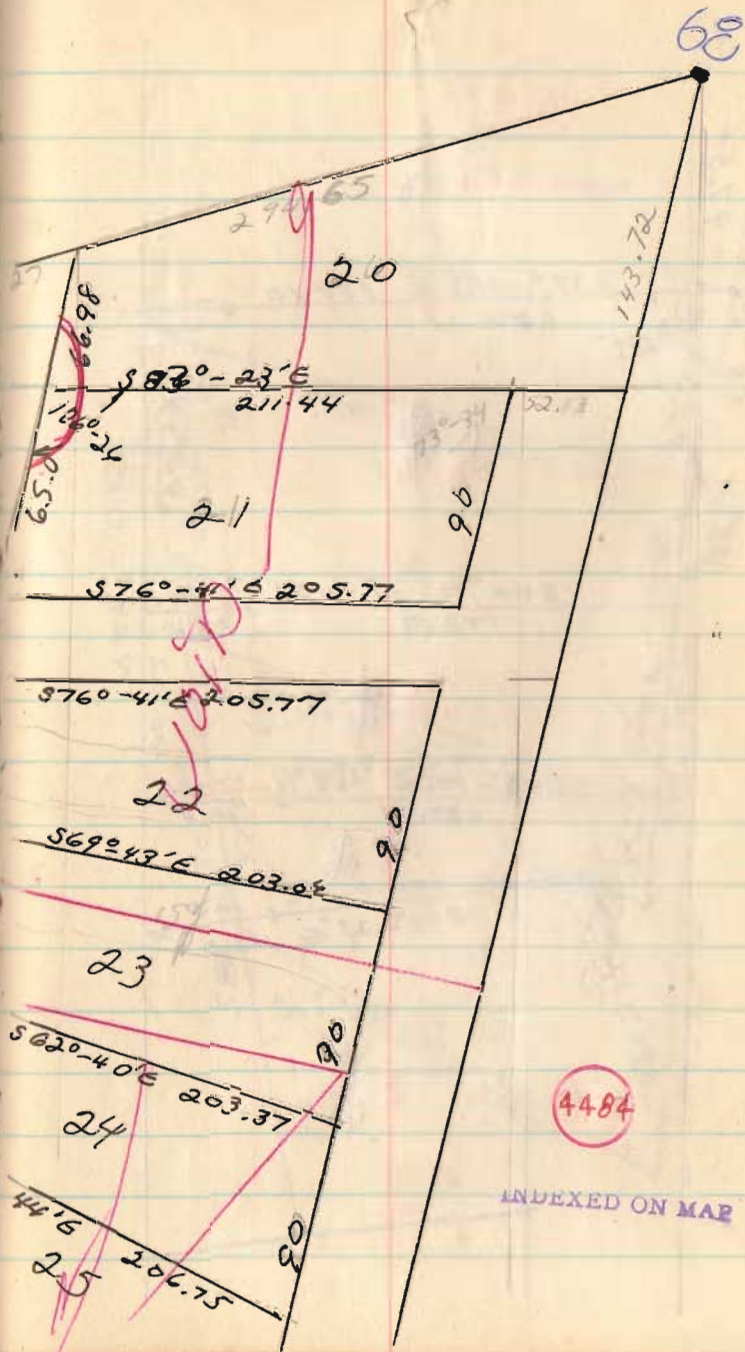
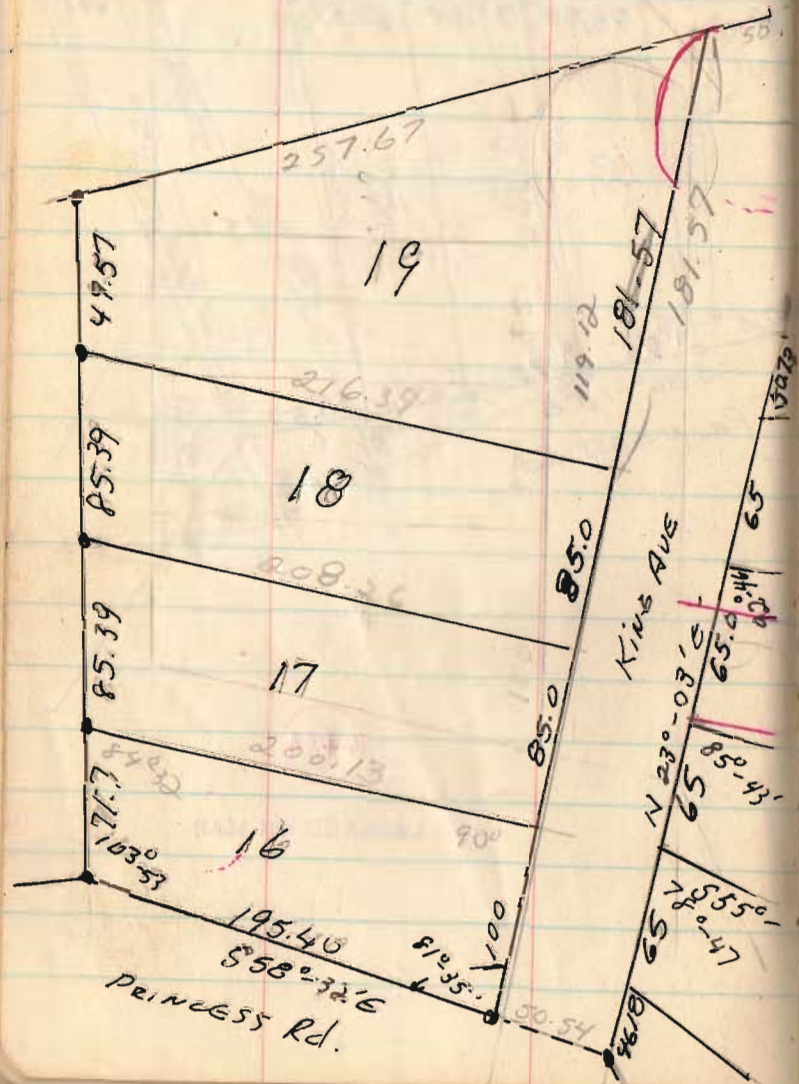
INDEXED ON MAP



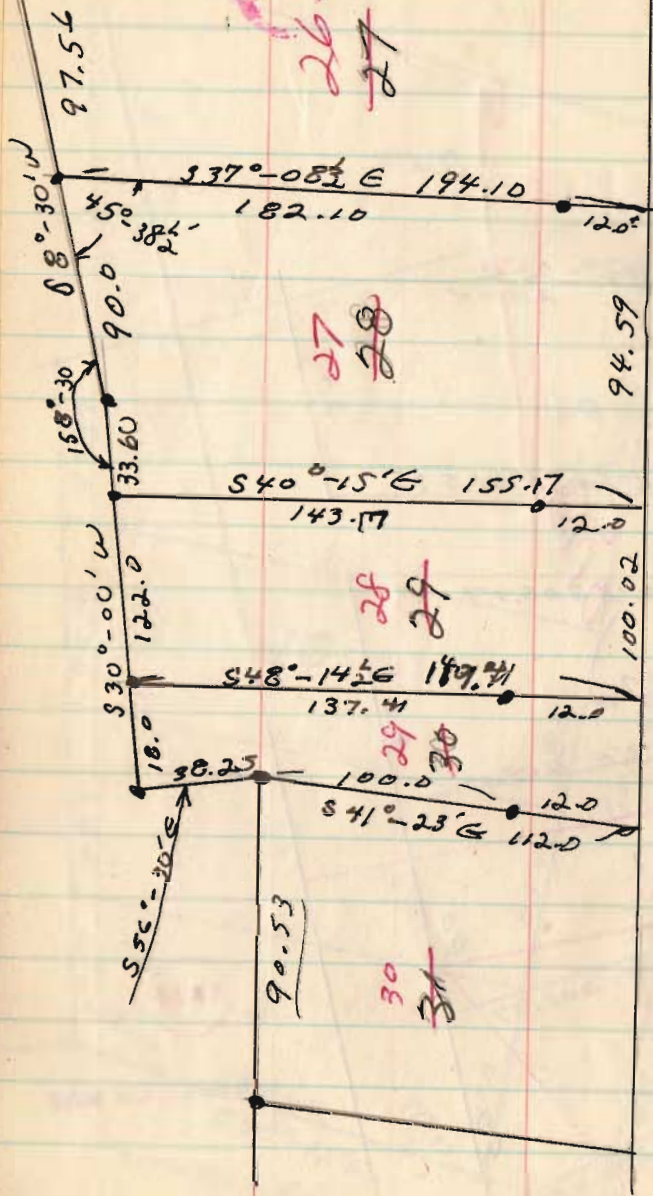


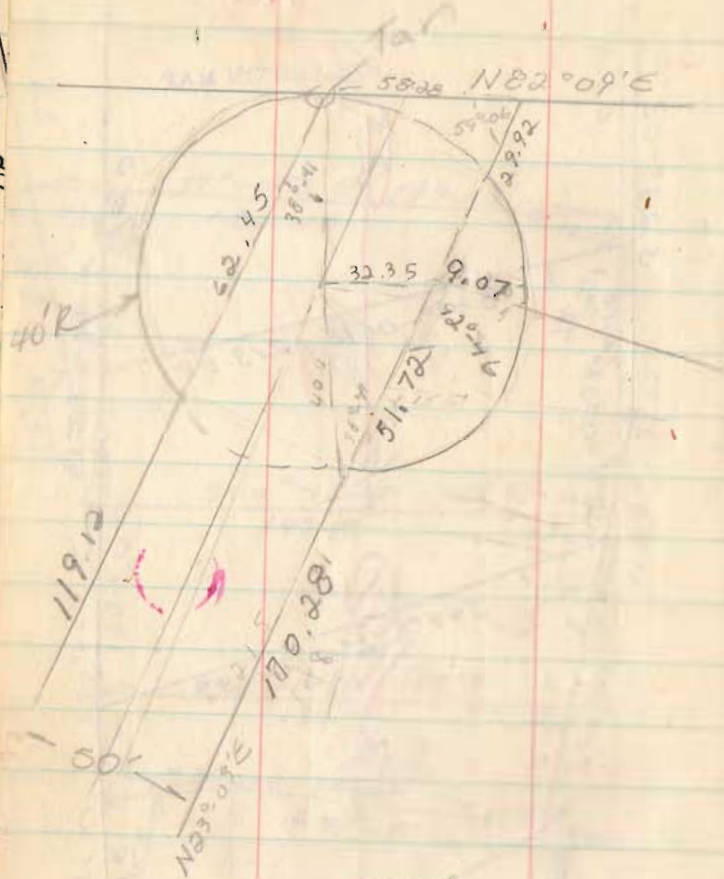
4484

INDEXED ON MAP









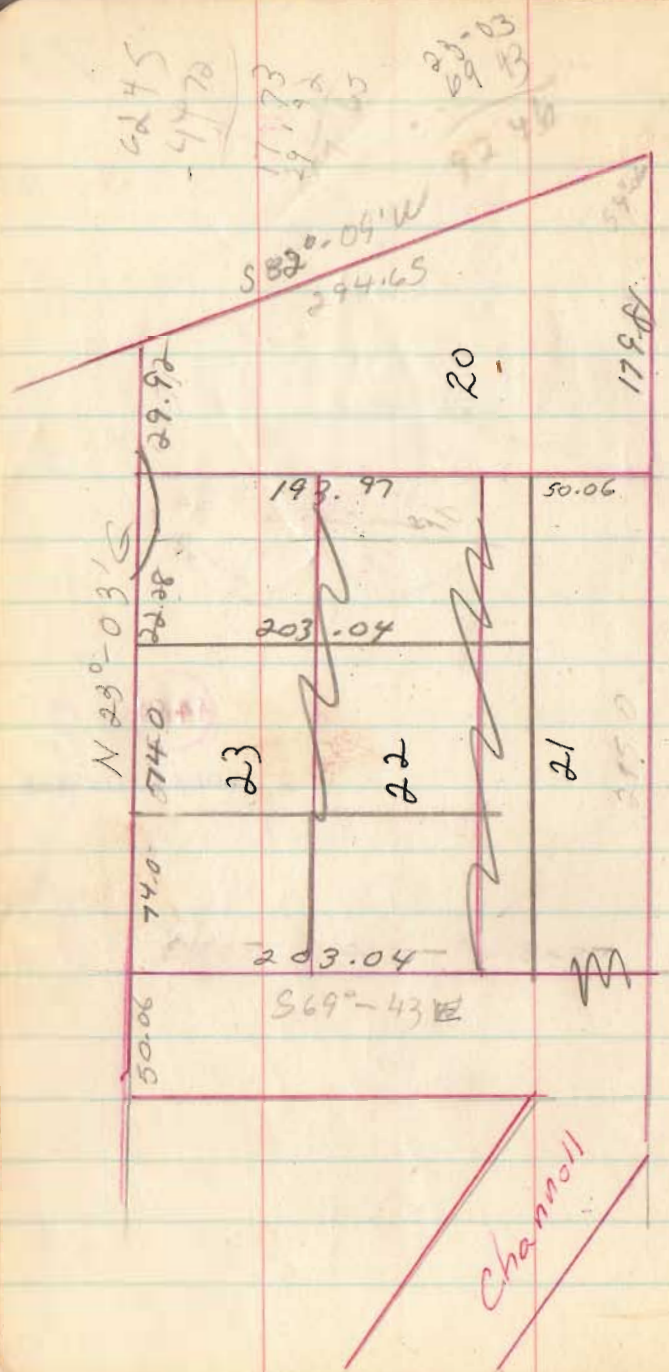
82.18  
94°  
50.06

4484

INDEXED ON MAP



1.2



7

71

