

Jan 23-60

1

for Bowman
Rich. Twp.
v. MS. 996F

Pear Channel

Cal. line

Approx

2272.0

to survey
corner

631.0

200

90°

21-47

evidence
of fence

577.2

108°

290.9

50-00

240.9

662.0

Jamet
corner

stone found

Spencer

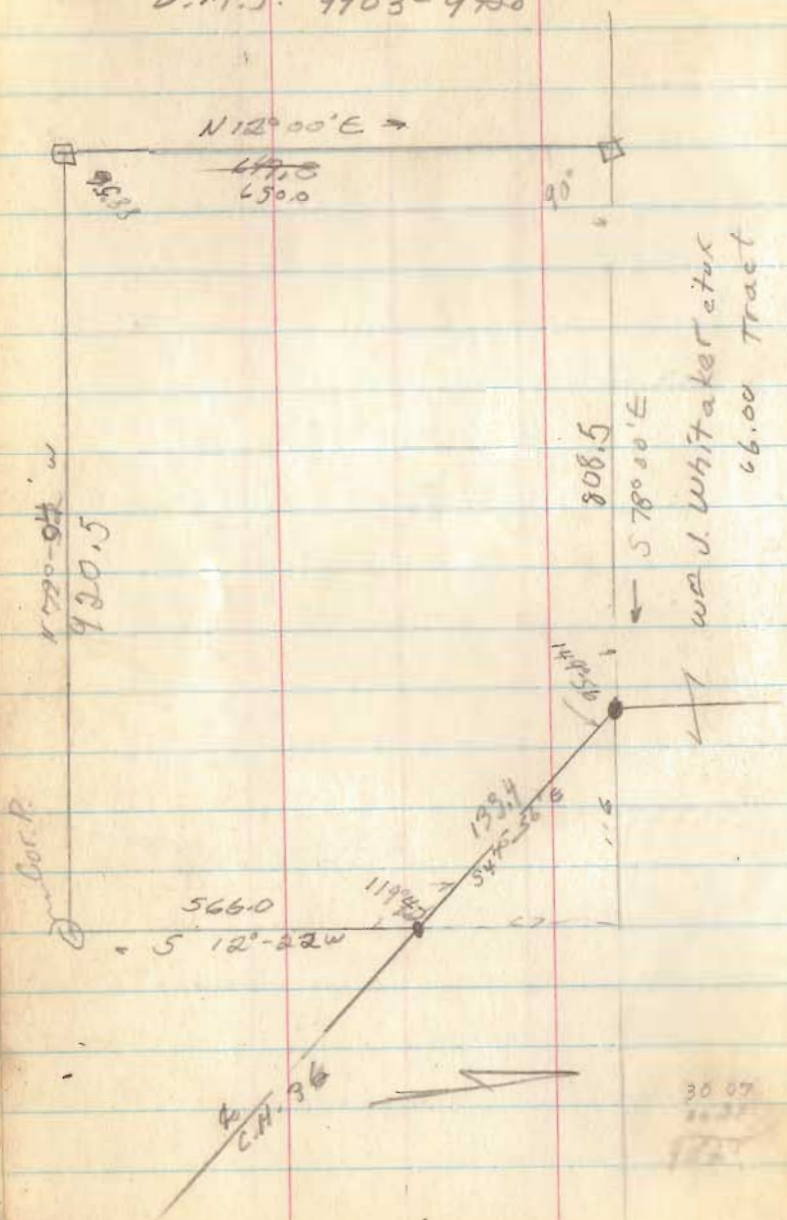
3923

INDEXED ON MAP

McConnell
McArthur Twp
U.M.S. 9903-9928

2-13-60

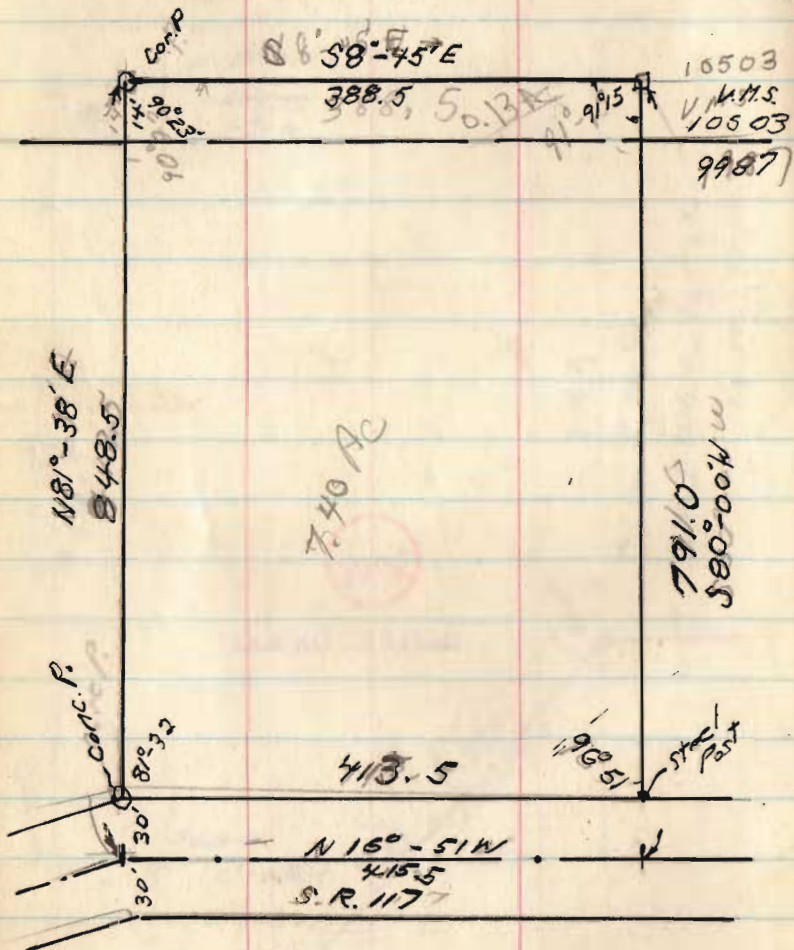
3



3040

INDEXED ON MAP

F. Yoder
Richland Twp



Feb. 27, 60

4

91-15
96-51
90-23
178-29
51-31

8-45
91-15
100-00
86-21
580-00 W

89-83

3349

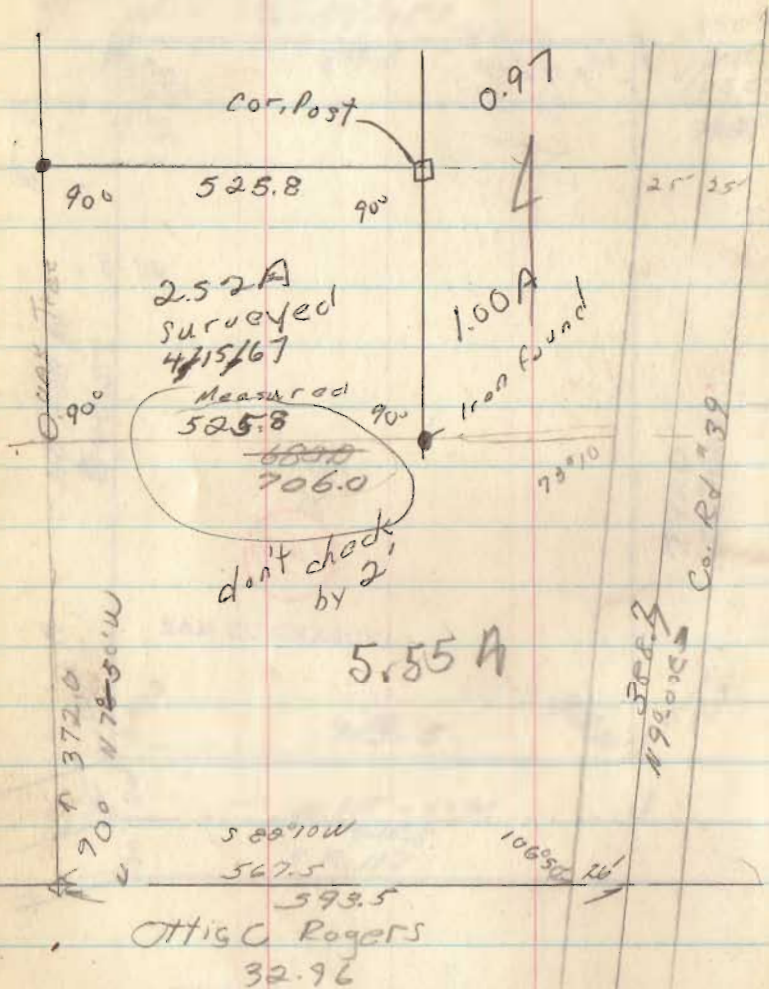
INDEXED ON MAP

Grant Lynn McCormick

V.M.S. 9929 McArthur Trwp

Mar 12, 60

5

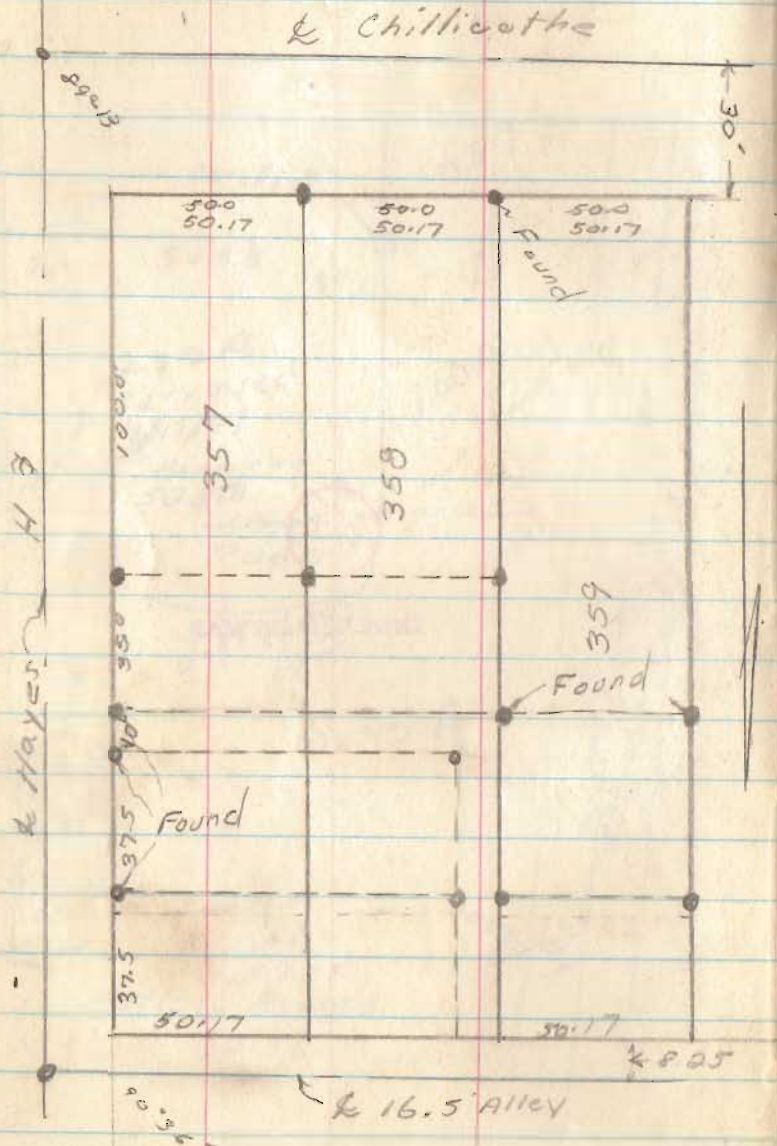


3055

INDEXED ON MAP

City Lots 357 + 358

6

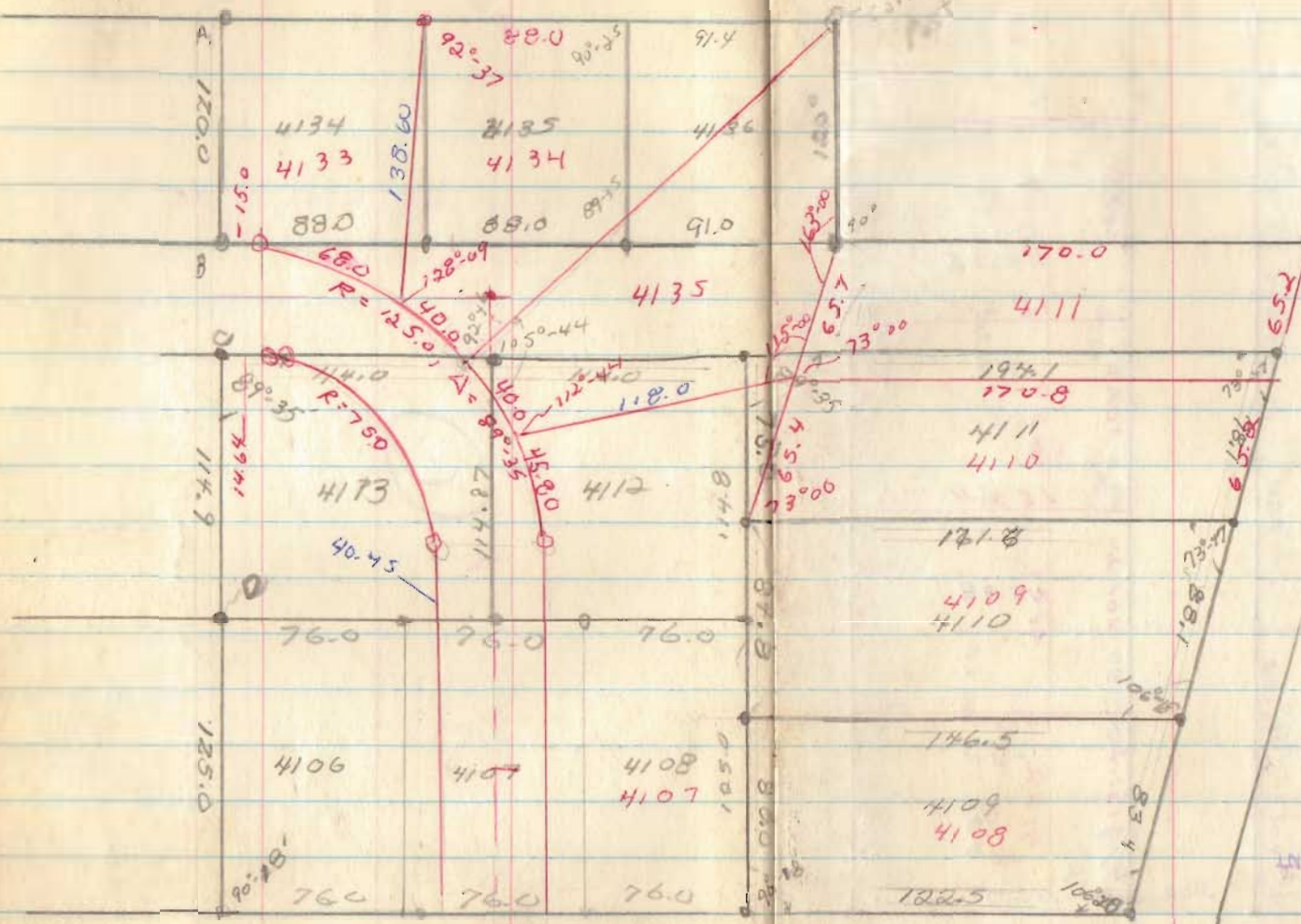


624

INDEXED ON MAP

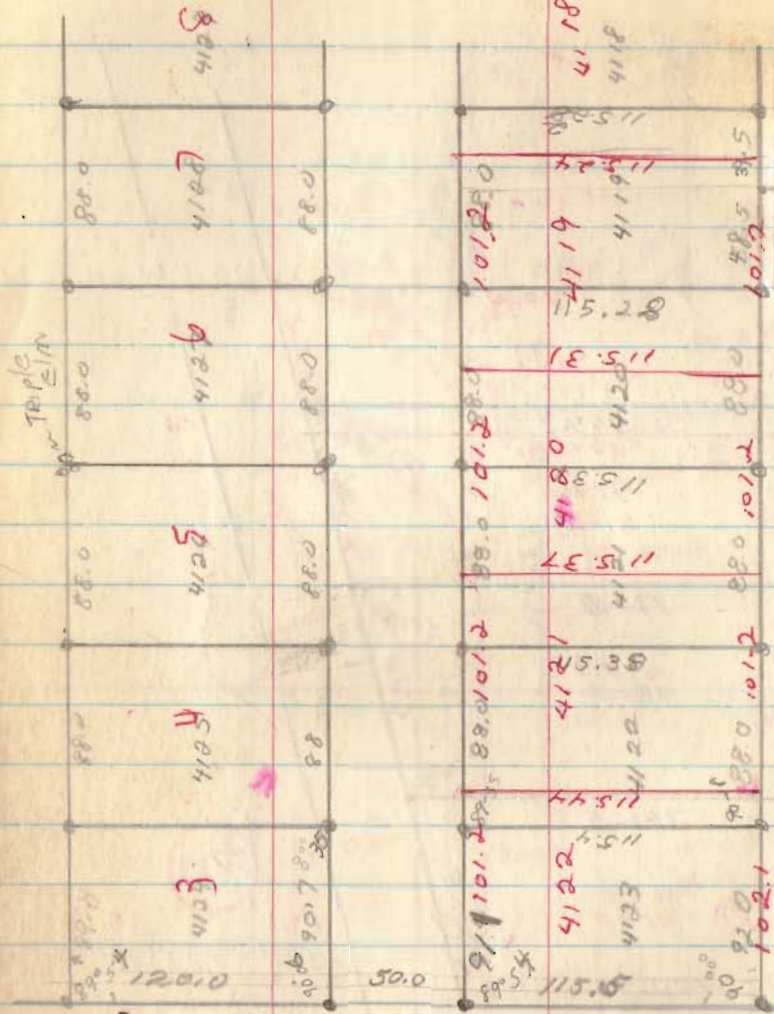
Humble Allot,

April 30, 60



3733

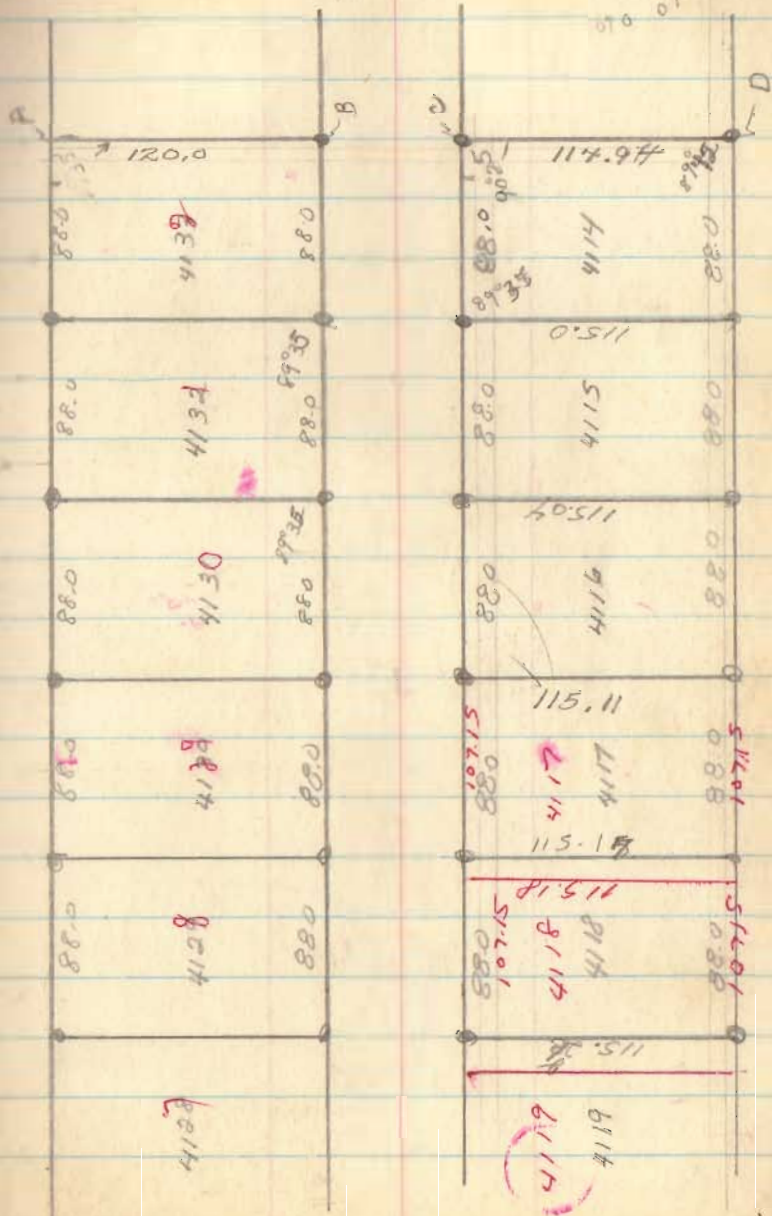
INDEXED ON MAP

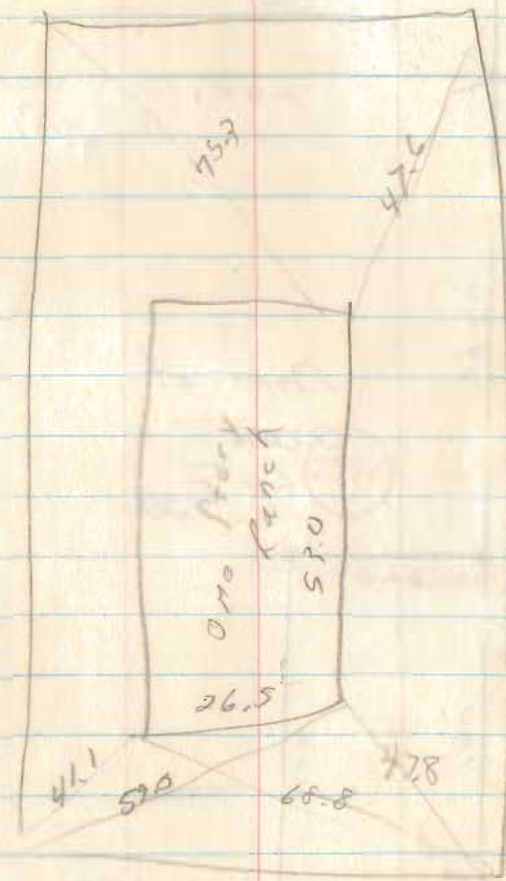
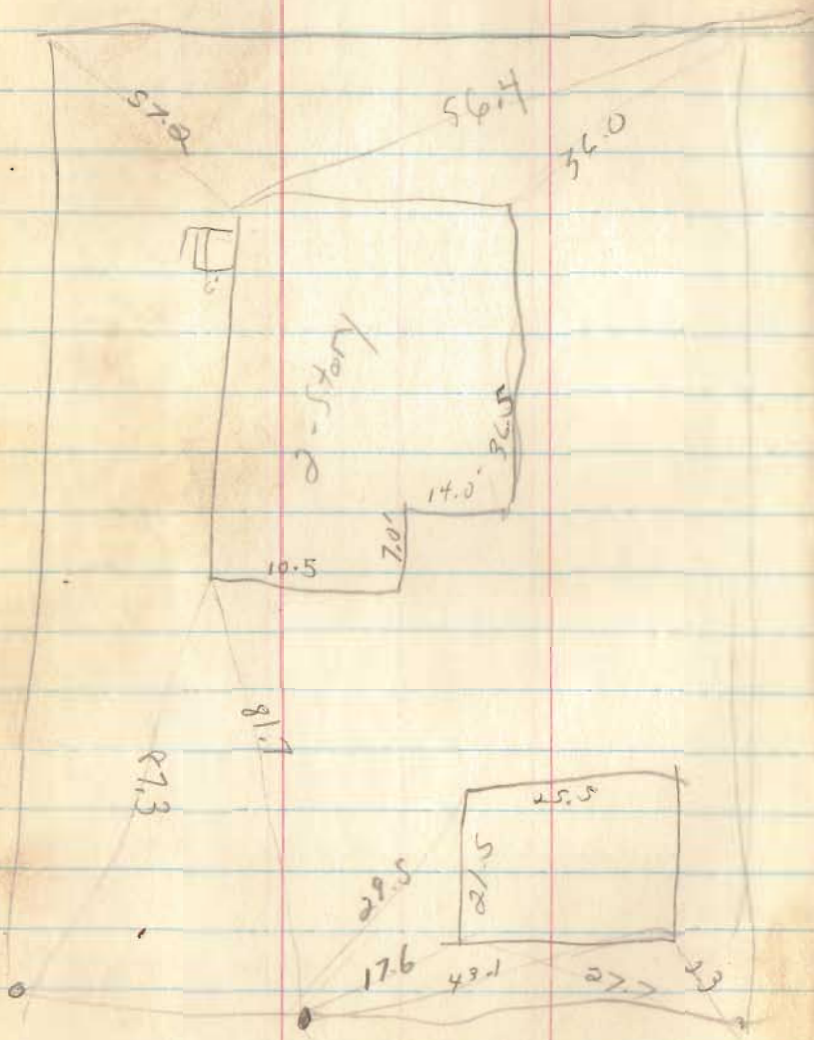


Reservoir RD

INDEXED ON MAP

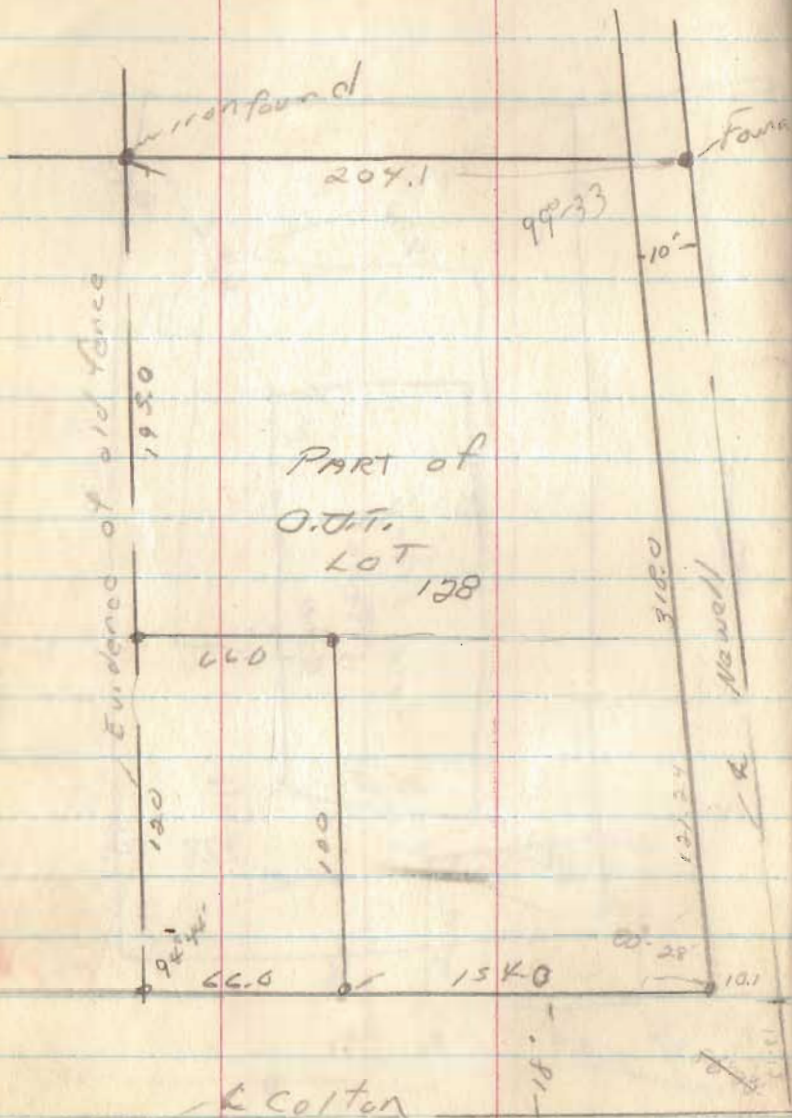
3733





May 10, 60

12



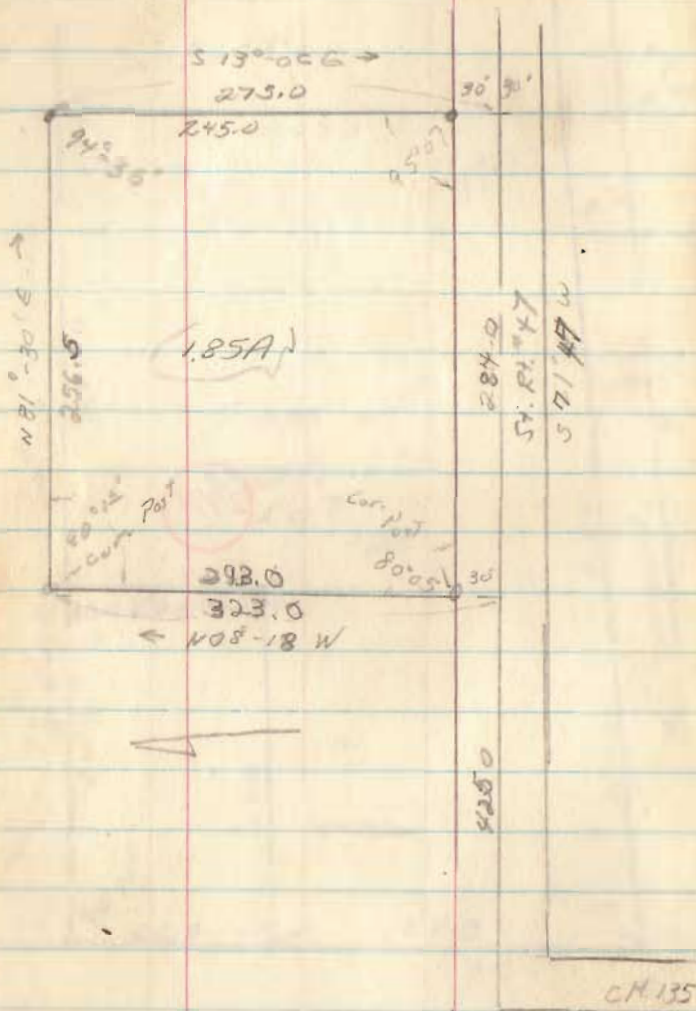
2991

INDEXED ON MAP

Glenn M. Parrett et ux 72,67A
 V.M.S. 3327; Jeff. Twp.

May 14, 60

13



292
 257
 245
 294
 397
 272
 105

81-30
 90 10
 171-47
 28 16
 91-36
 91 20
 13 04

1825

INDEXED ON MAP

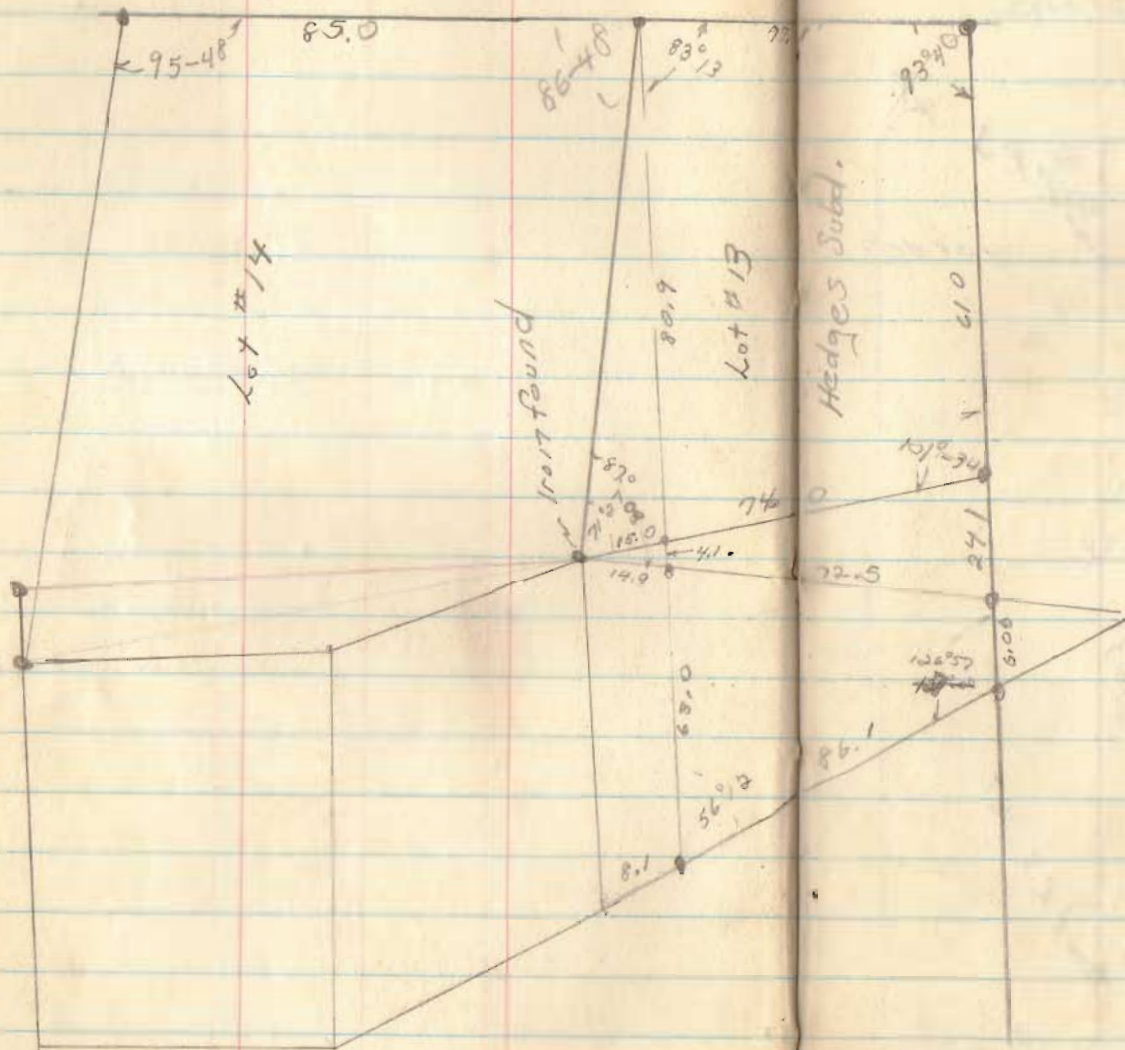
Charles Thompson
RR#1. Huntsville, O.

June, 4, 60

(15)

12657
93-40
83-13
56-12

160 02



Sec. Plat

~~93-40
01-34
71-37
88-19
95-4~~

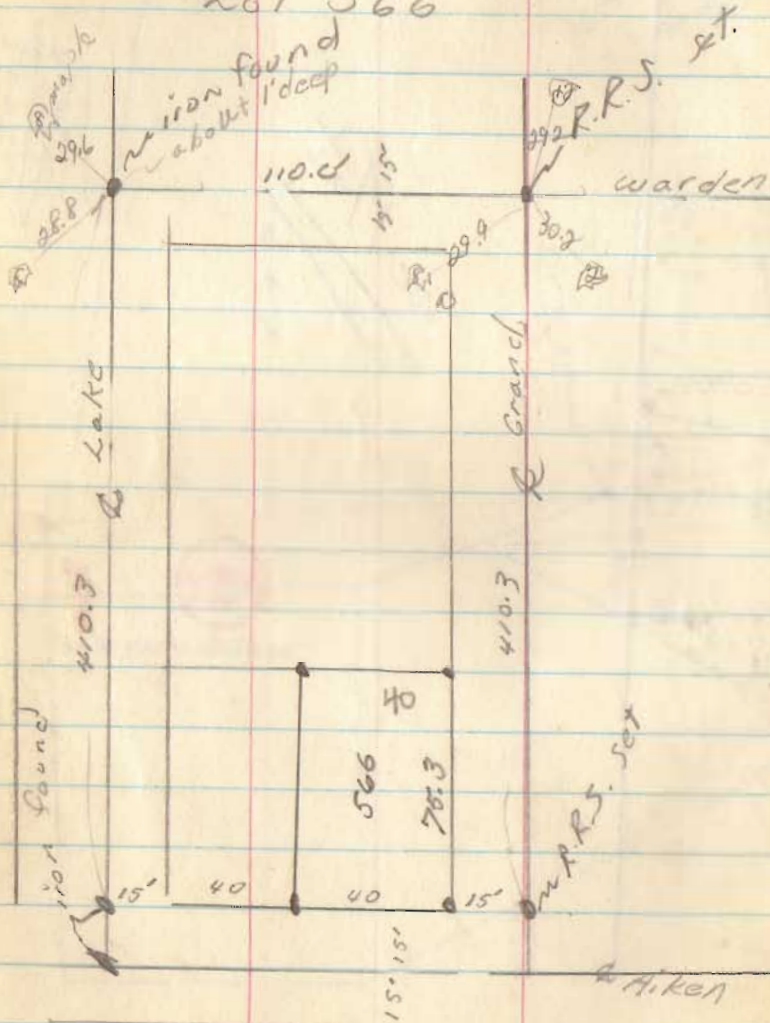


INDEXED ON MAP

Wilbur Miller
Russell's Pt.

Tues

Cor. Aiken + Grand
Lot # 566



June 16, 60

(16)

320.3
20.3
303

6498

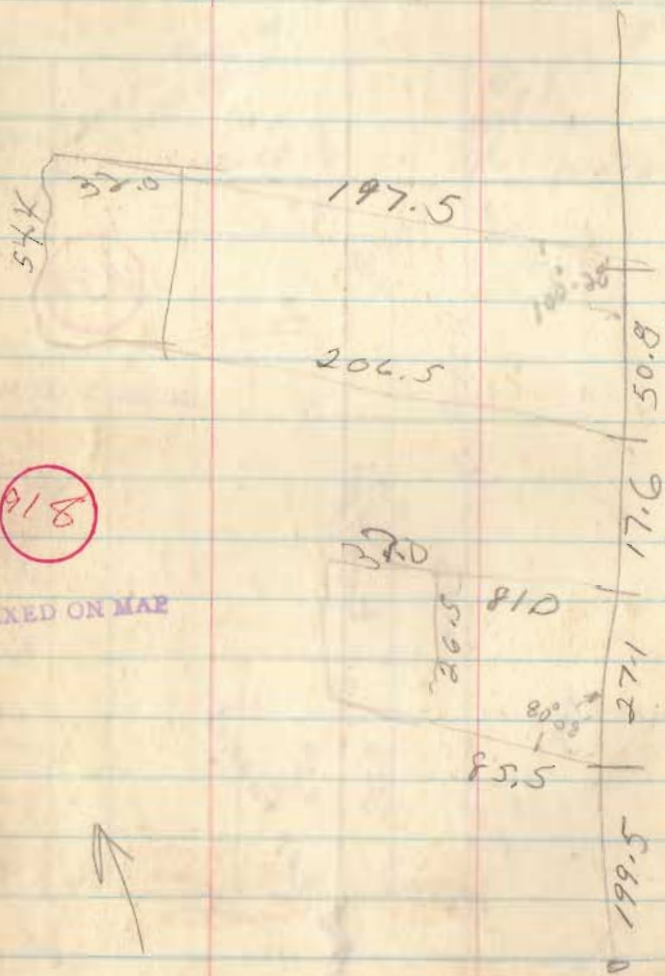
INDEXED ON MAP

Miami

Center

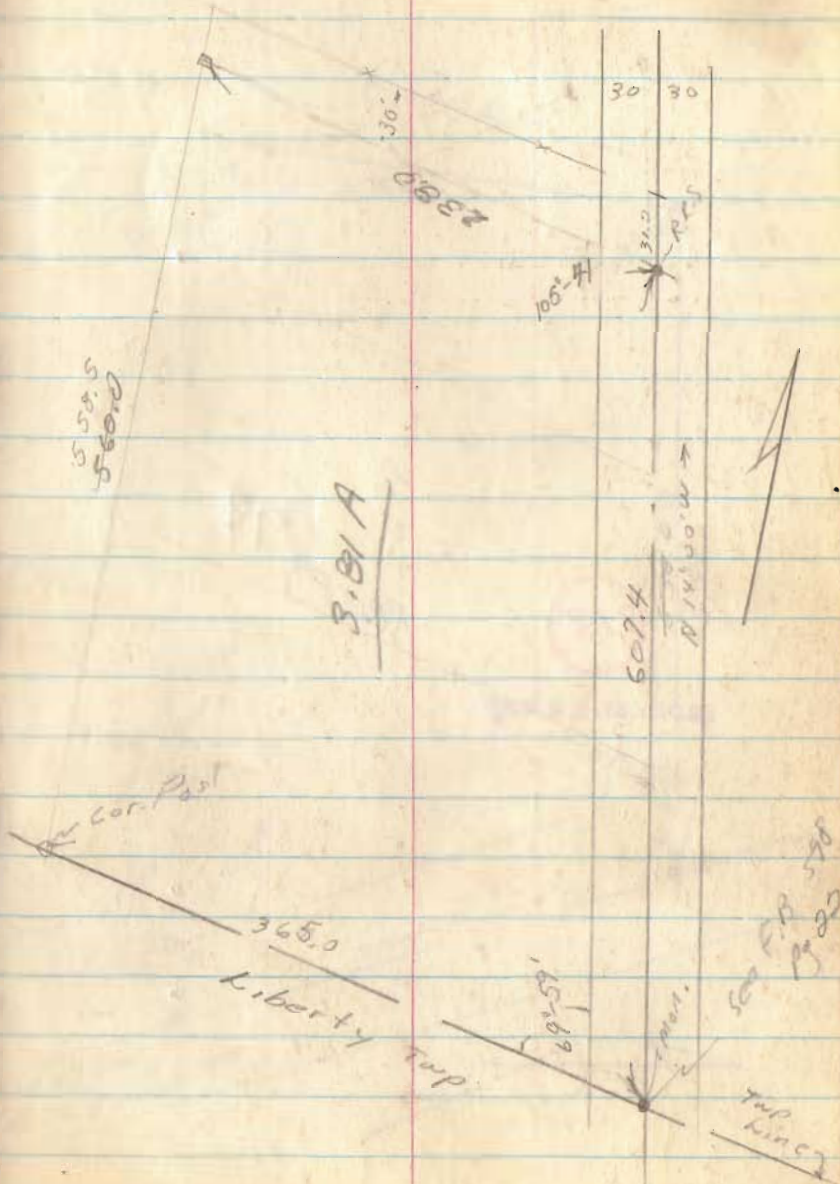
Miami Found

Frank Park (51.00 A)
 Sec. 27, T.4, R.14
 Lake Twp



June 28, 60

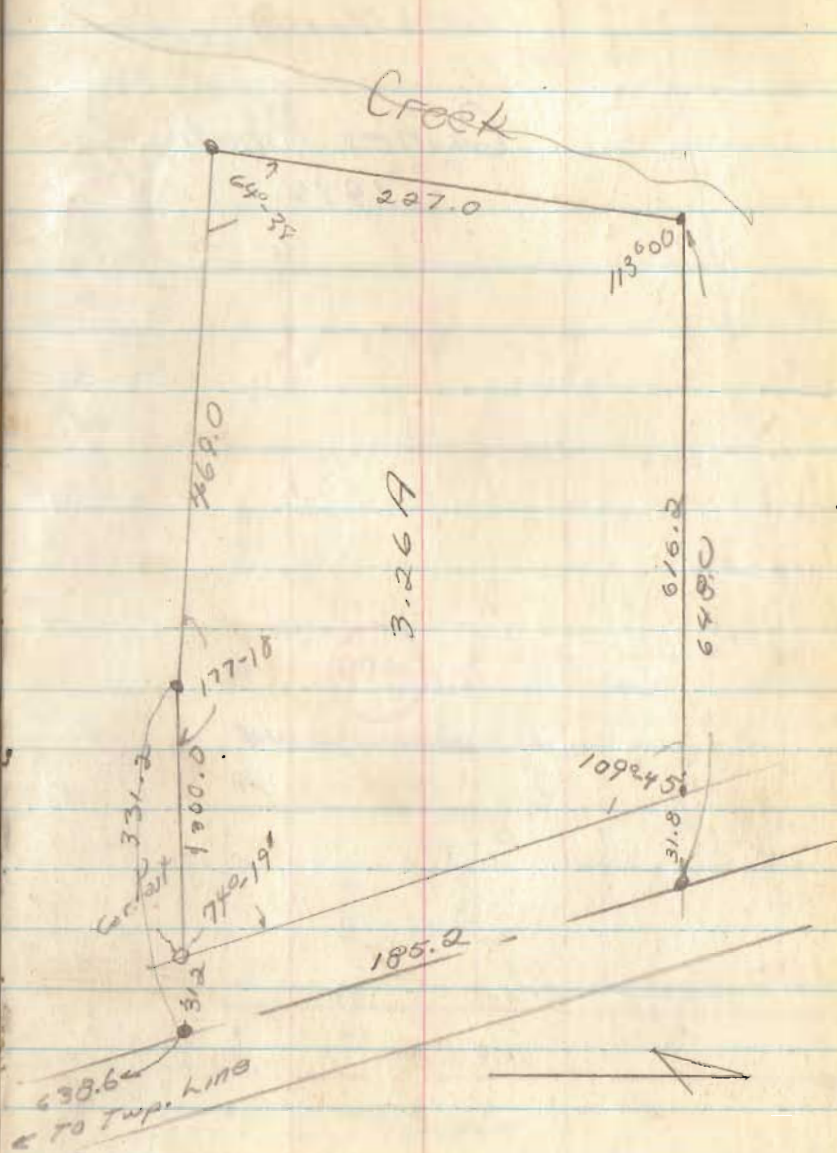
114



818

INDEXED ON MAP

see pg #17

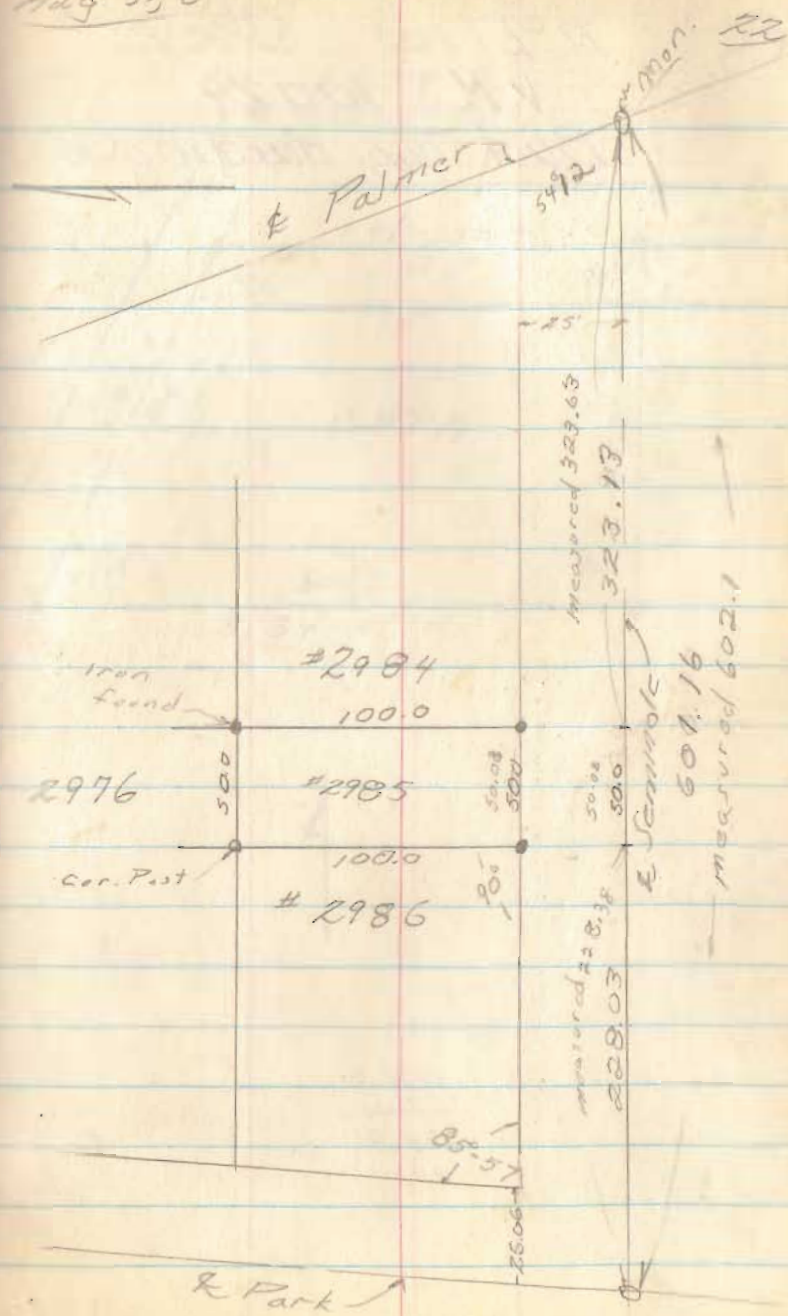


Fern Shawver
 Lot 2985 - City

6500

INDEXED ON MAP

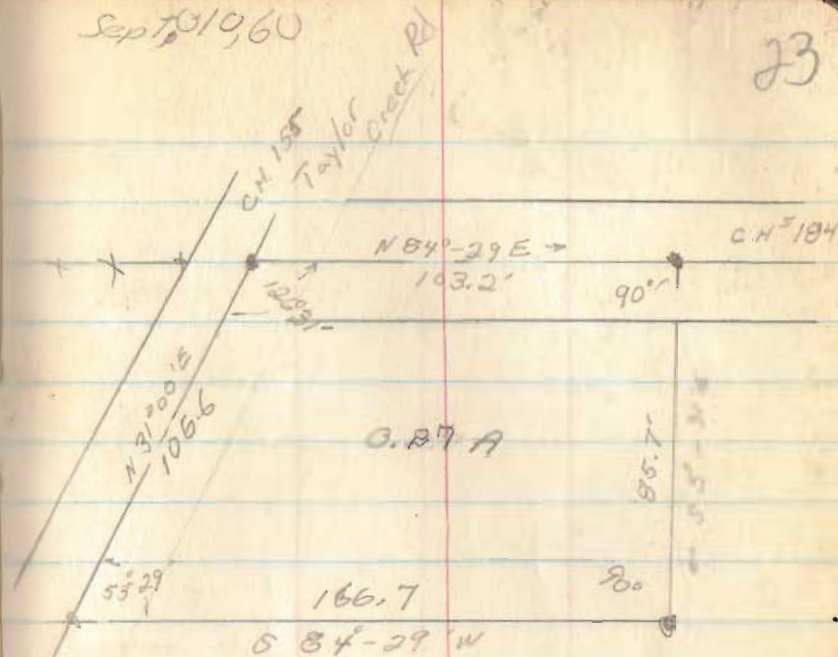
Aug 31, 60



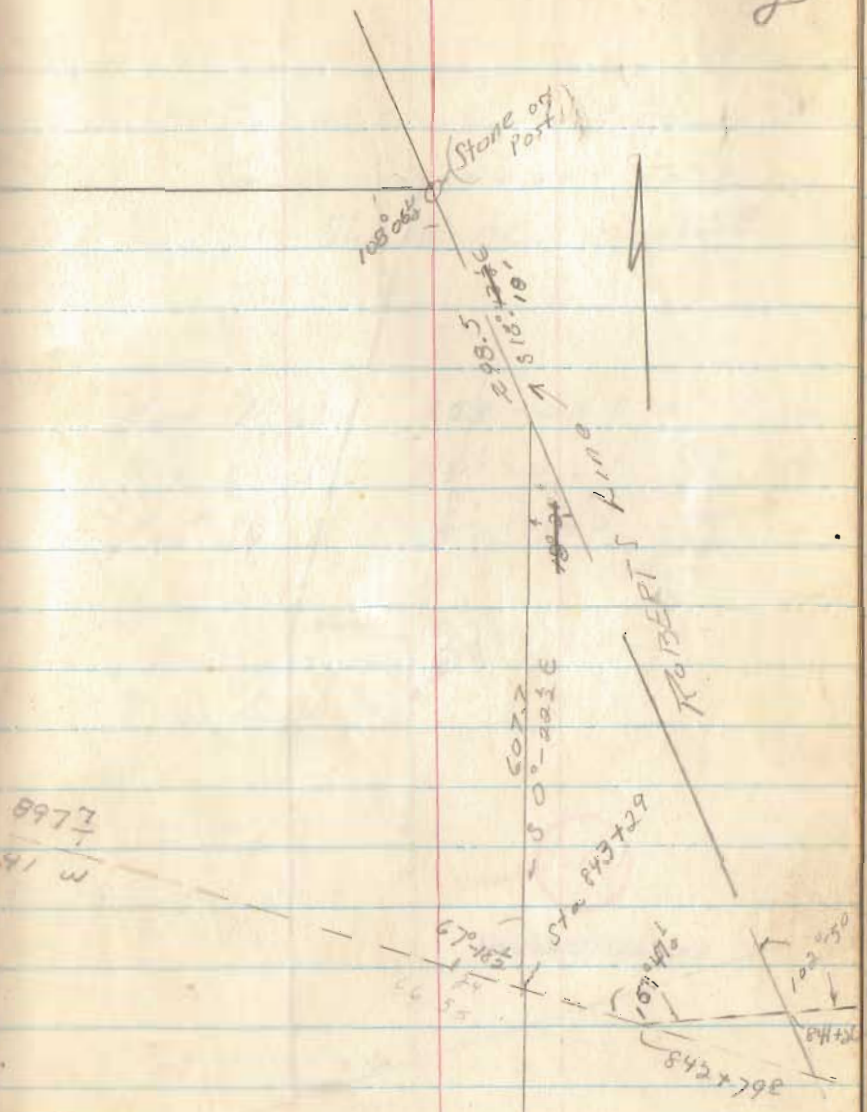
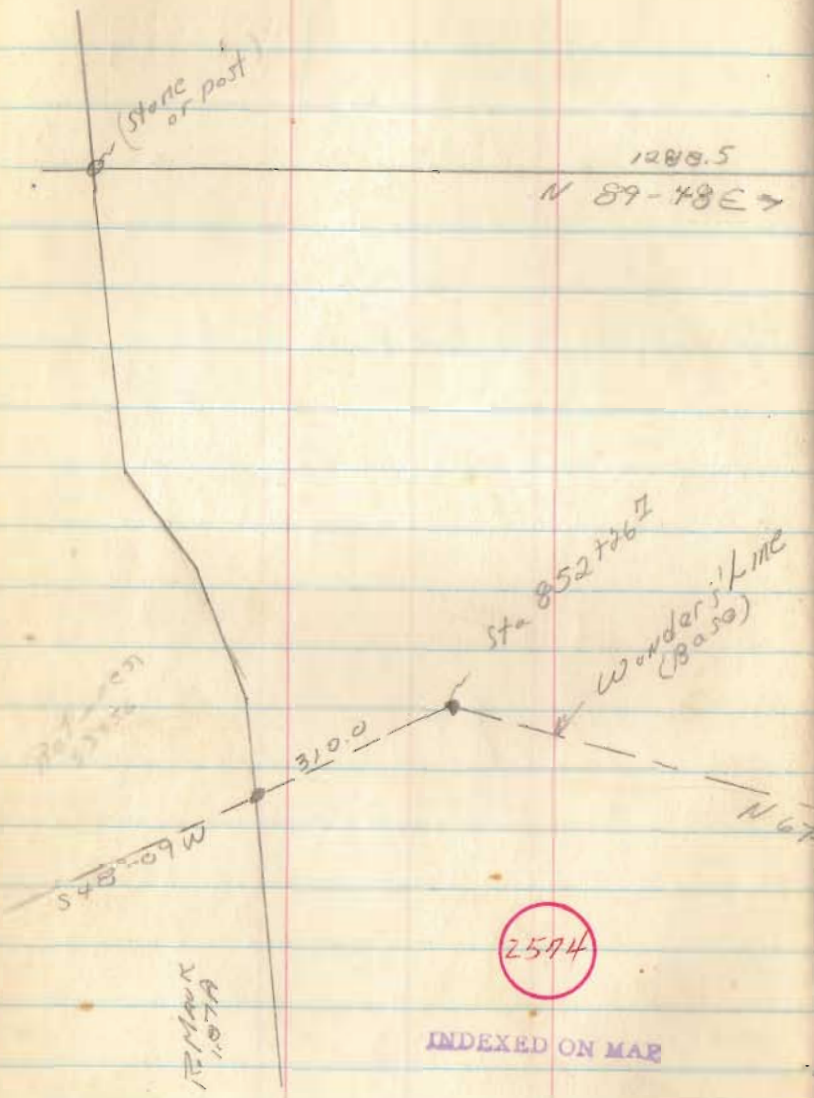
McElree Survey
 V.M.S. 10029
 Buck Twp, Harding Co

Sept 10, 1960

23



$106^{\circ} 31'$
 $31'$
 $95^{\circ} 31'$
 $21'$



26

Sat. Oct 29, 60 Billway Down 73'

Gauge 2.89 + .73 = 3.62

Should be = 3.53

Nov. 11, 60 3.53 - 2.39 = 1.14

Nov 12, 60 3.53 - 2.27 = 1.26

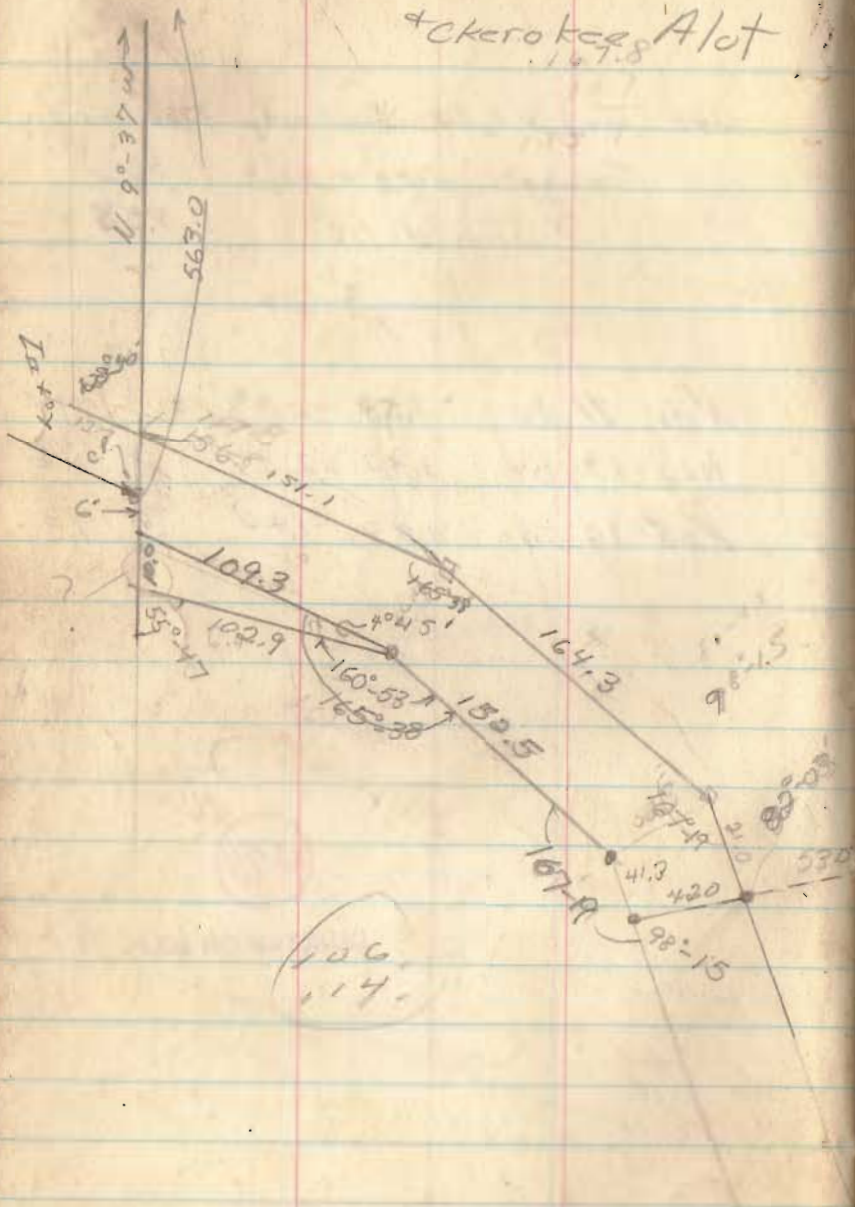
Nov 19, 60 3.53 - 1.40 = 2.13

2574

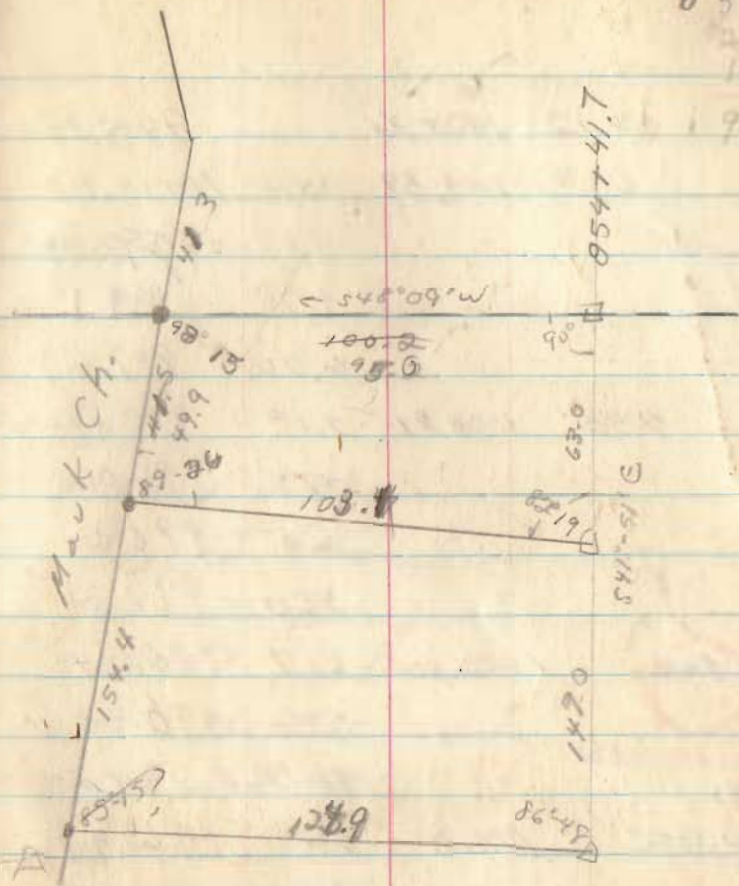
INDEXED ON MAP



Mauk Ch.
 + Ckerokag Alot



27
 3
 23
 19
 195



2574
 INDEXED ON MAP

10.12 1005.46 995.94

3.53 1003.59 5.40 1000.06

854-447
 {
 4.80 998.79
 4.50 999.1
 6.00 997.6

T 4.35 1002.81 5.13 998.46

4.75 998.06

6.2 996.6

5.60 997.21

560 1002.30 6.17 996.64

5.42 996.88

4.65 997.05

4.82 1001.81 5.31 996.99

2.57 999.24

539 1001.56 5.64 996.17

4.65 996.91

6.23 995.33

545 1002.36 996.91

4.3 7.1

Hub

Angle

850+50 Hub

in Ditch ^{45°} (1' higher out of Ditch)

849+63 Hub

848+17 Hub

847+76 Hub

847+07⁴ Hub

846+06⁵ Hub

844+61⁴ Hub

844+61 (Spillway) moved about 15' SW to Cont water

25714

INDEXED ON MAP

445	1001.44		996.94
	67		999.24
	4.8		996.5

325	1002.04		998.79
		4.9	997.1

Turn 403	1001.27	4.80	997.24
----------	---------	------	--------

	51		
	56		5.3
	48		5.5

P 228	1001.01	354	997.73
-------	---------	-----	--------

P 547	1001.80	488	996.13
		49	996.9

P 495	1001.87	488	996.92
		54	996.5

	7.38		994.49
			2.13

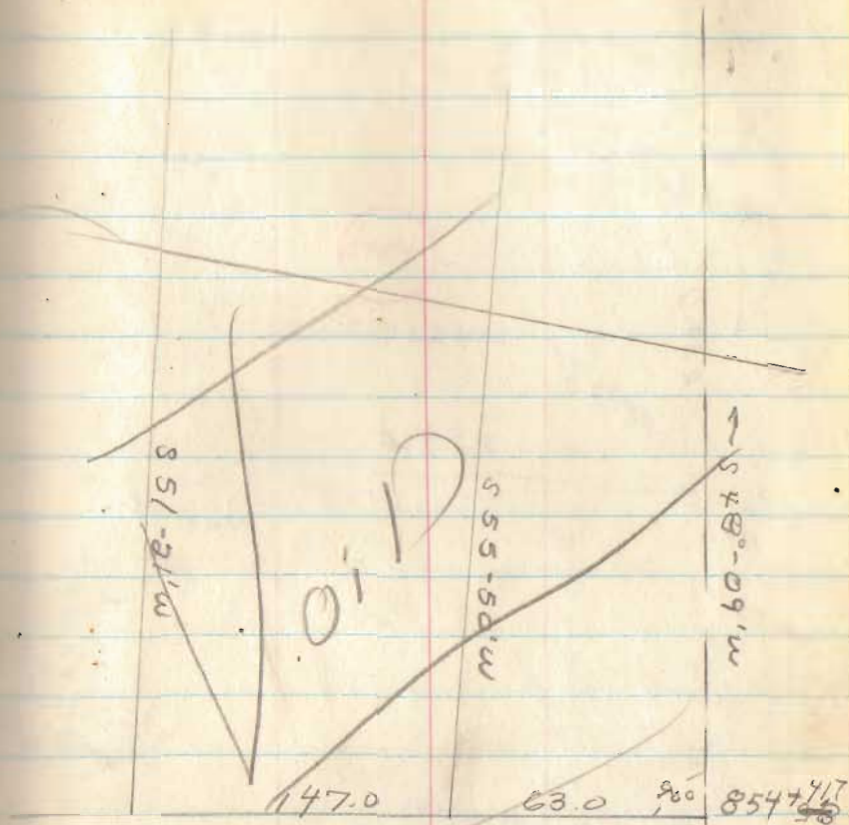
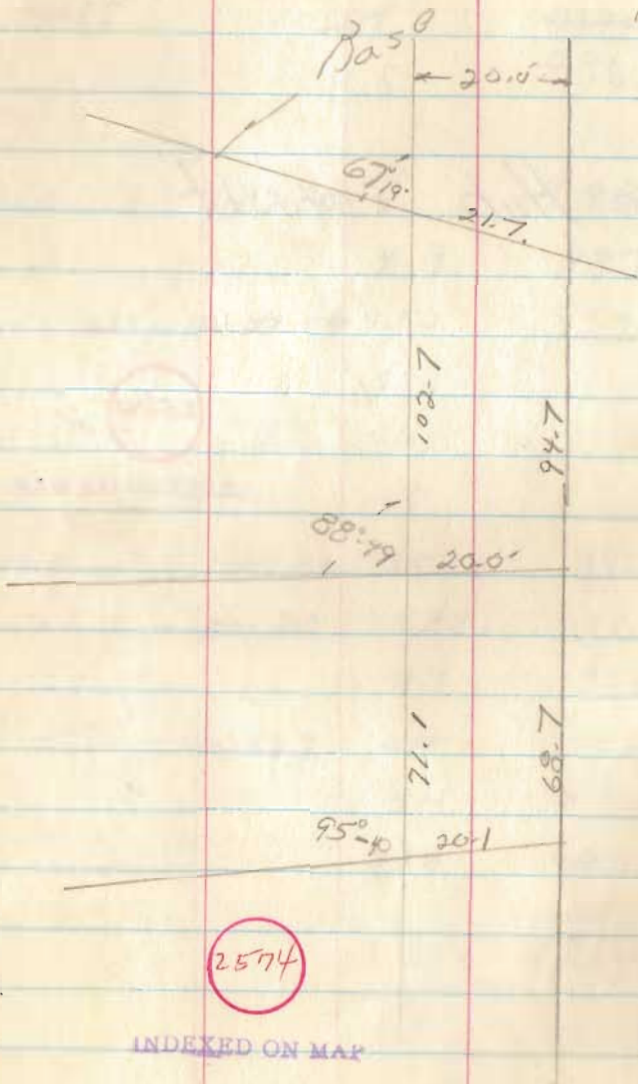
496.52

	5.1		996.8
--	-----	--	-------

Base Hub 854+41Z

2574

INDEXED ON MAP



64.0
119°08'

230.0

88°56'

454.0

170

4538

0101
1105

360



2504

INDEXED ON MAP

31

200.0

5700

240

560

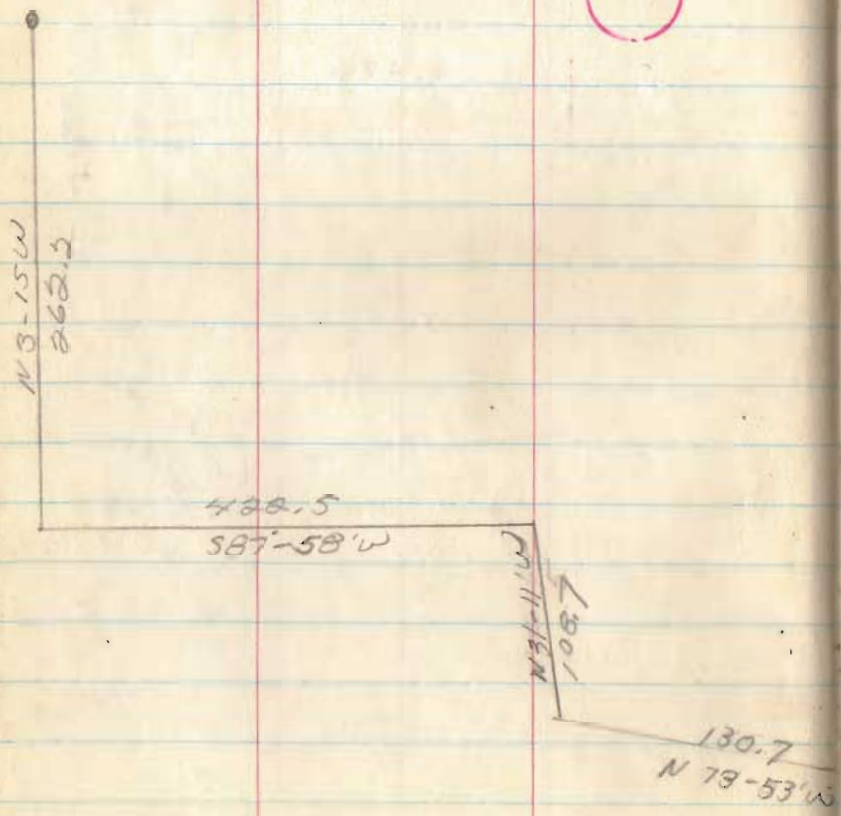
84-10

44-10

20.0

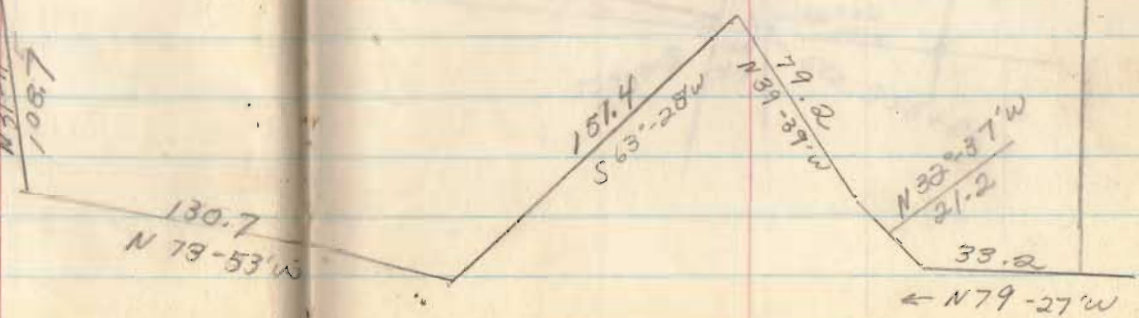


Vegetation Line

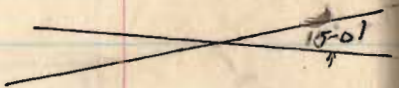
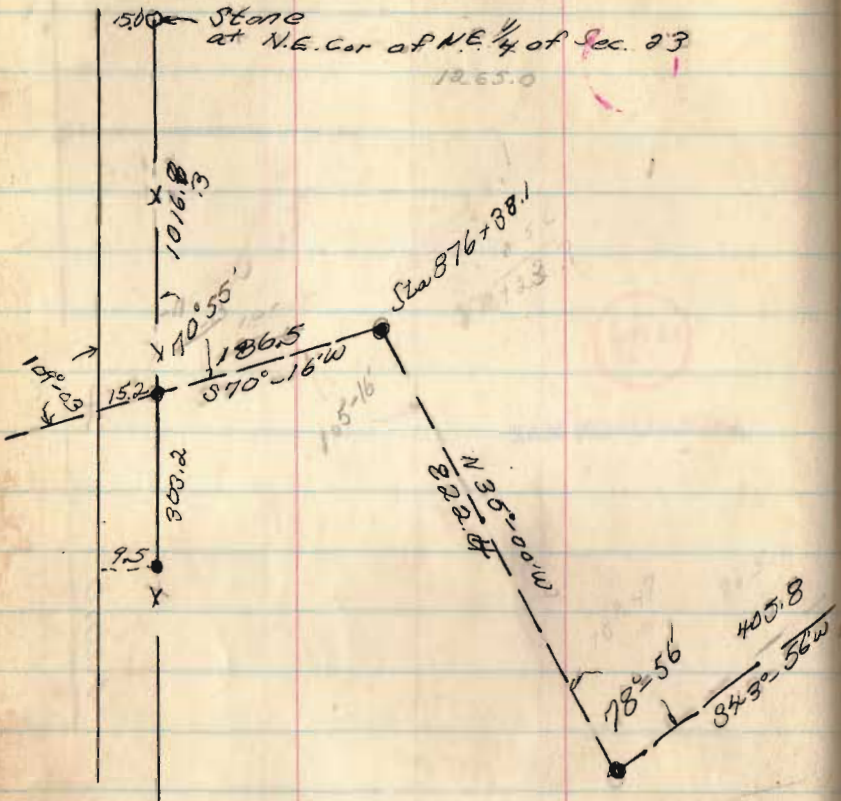


2574

INDEXED ON MAP

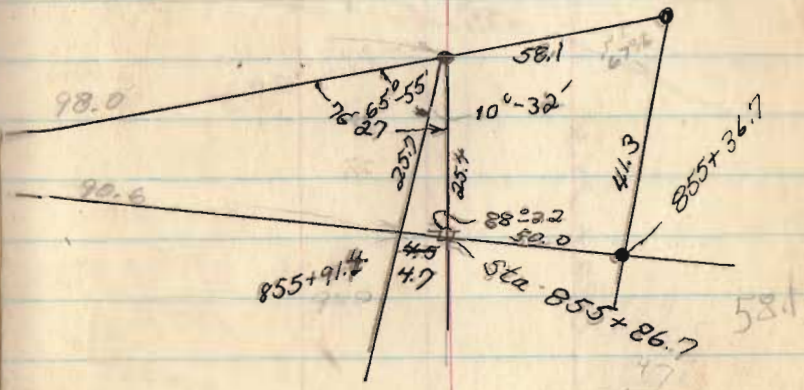
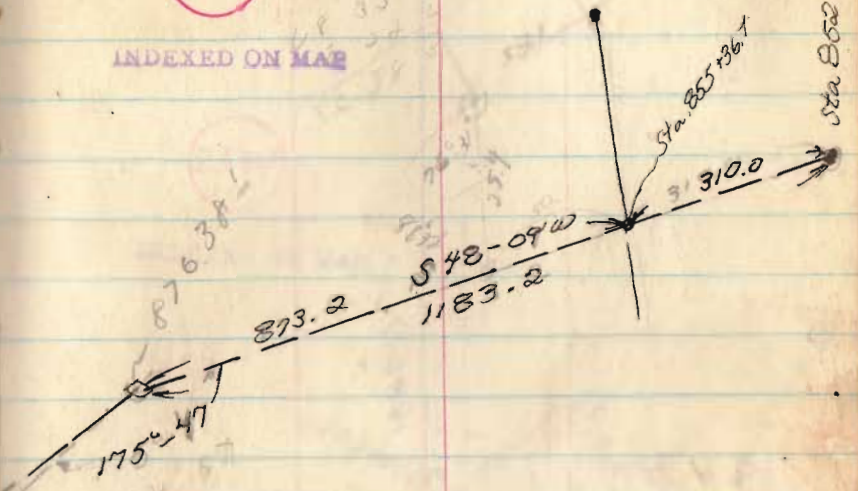


Wanders LITE
on R.G. Anderson



2574

INDEXED ON MAP



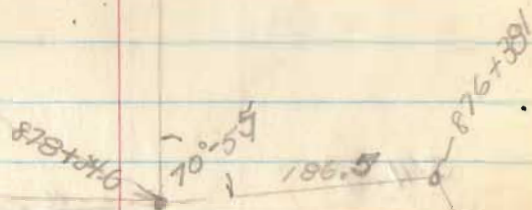
33

Sta 852+26.7

Out of Stone 34

2574

INDEXED ON MAP



1409
186.5
43.7
1639.4

1639.4

Stone

1488.9

160.9

43.7

10° 31'

892+29.5

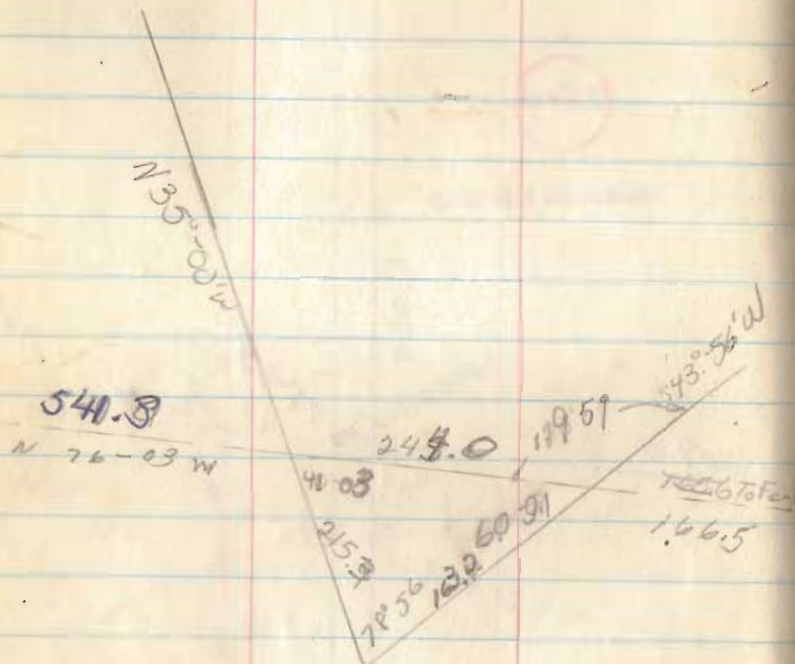
Measura 1409.0

Map 732

892+29.5

822.2
215.3
606.9

~~405.8~~
~~242.9~~
162.9



35-00 541.7
41-03 215.6
76 03 428
1379.9
1214.3
165.6

35

2574

INDEXED ON MAP

541.3
244.0
166.5
1379.9
950.8
428.1

Lloyd Anderson
Stokes Twp.

Sec. 14 T. 6 S. R. 8 E.



3152

INDEXED ON MAP

Jan. 1961

37

7.00
102.33
109.33
116.33

394.3
30.5
429.8

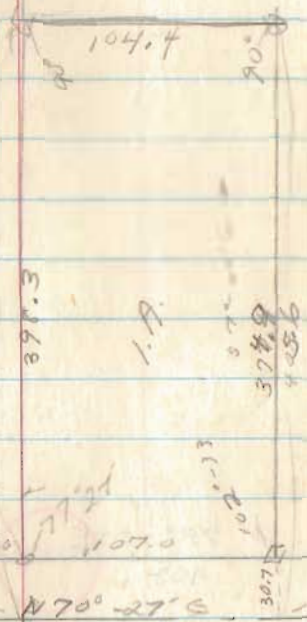
377.4
30.7
408.1

488.0

377.3

1.9

374.9
405.6

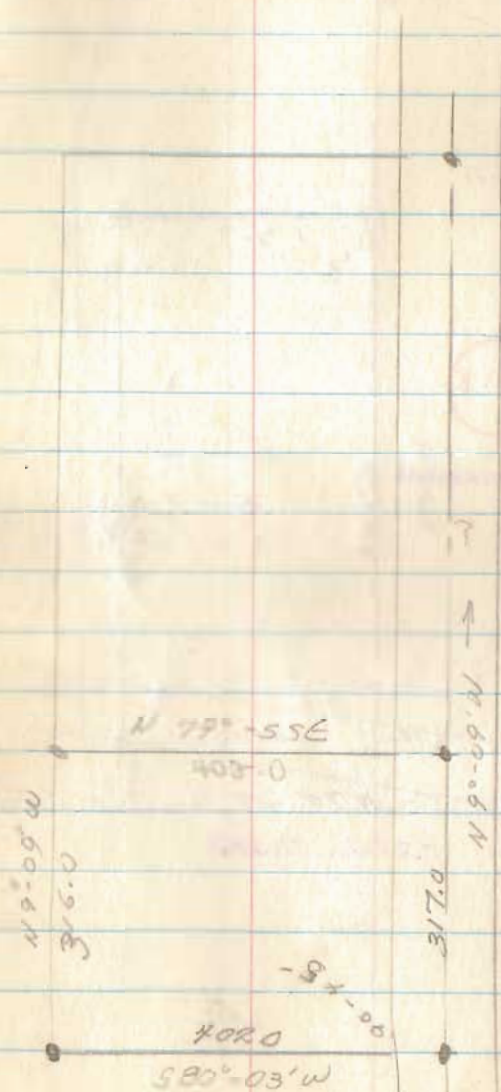


170-27.6

575.5

INDEXED ON MAP

Irone Nash
U.S.S. 12168
M^cArthur Twp.



Feb. 28, U

38

3071

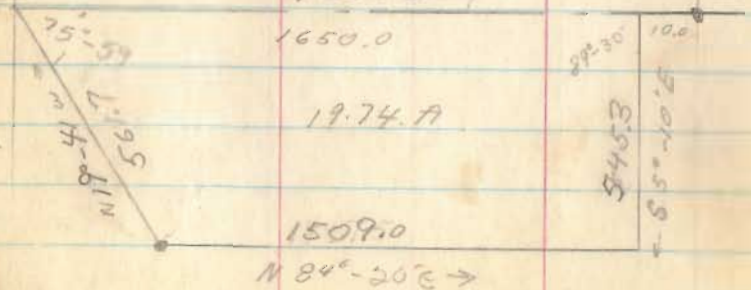
INDEXED ON MAP

Wm Shields
 McArthur Twp
 V.M.S. 9932

N 85°-44'E →
 796.7

636.5
4.58A
4.75
632.5

250.0
 167A
 250.0



Mar., 61

40

76.70
 13.55
 2.90
 33.35

79.2
 634.5
 5
 168.8

6501

INDEXED ON MAR

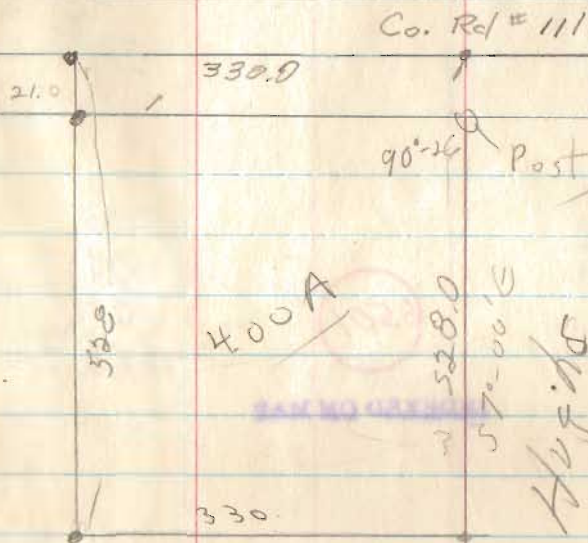
~~121.23
 14.74
 146.87~~

37.76
 30.40
 19.67
 105.3

122.90
 19.74
 142.64

11.2
 1.23
 11.97
 11.97
 11.97

Shields Survey
 V.M.S. # 9932
 Rushcreek Twp.



6140

INDEXED ON MAP

Dec. , 65

41

W^m Shields

Co. Rd # 111 (40 or 42' wide?)

Rushcreek Twp

V.M.S. 9932

25.00

- 1) S 85 $\frac{1}{2}$ ° E 33.13 Ch. with Co. Rd
 passing a corner Steno E. 89.
- 2) S 7° E 22.41 ch
- 3) S 82° W 13. ch
- N 7° W 50 lks.
- S 82° 19.91 ch to iron pin
- N 7° 45' W 21.73 ch to begin.

Route # 2 Bellefontaine

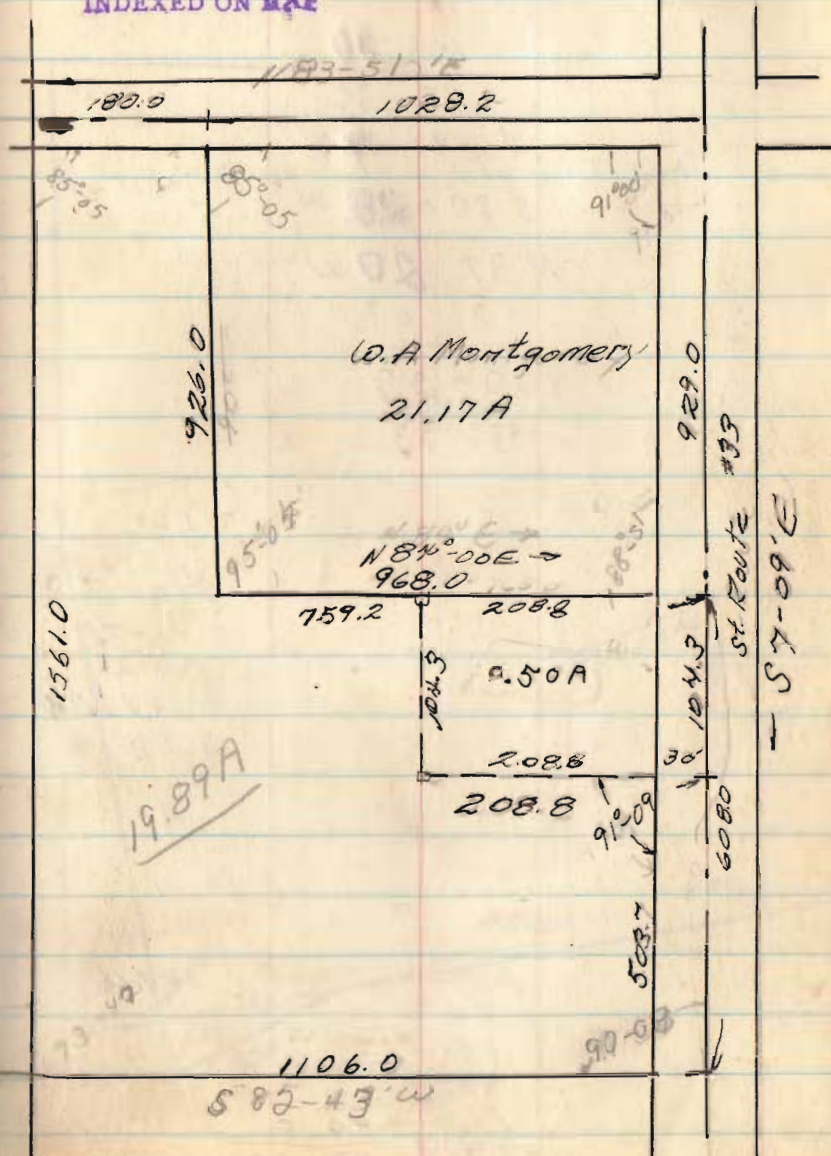
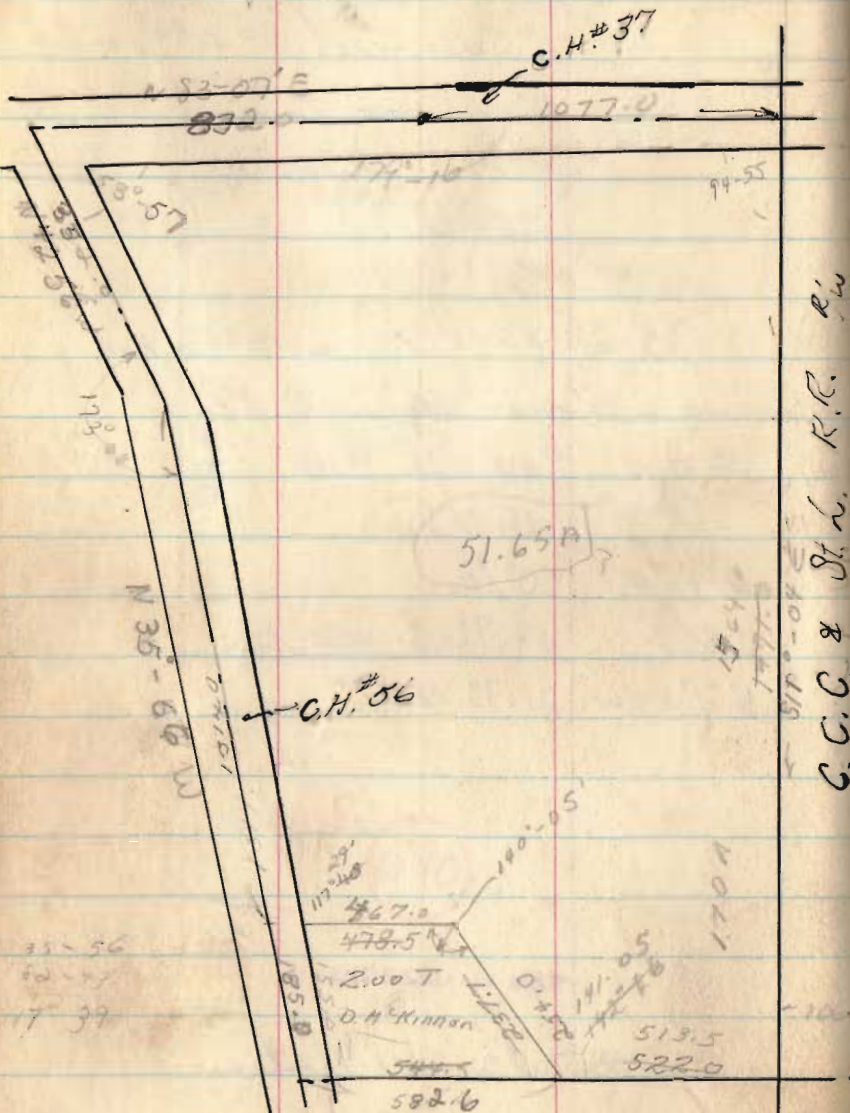
Mo Creek to Anderson
 V.M.S. 2881
 McArthur Twp

3944
 3078
 3077

Dec 61
 Jan 62

48

INDEXED ON MAP



142-20

82-43

1-59-37 W

S 80-28 W

N 37 20 W

83 07

120-27

59-33

59°-30'

20'

59 58

40 27

S 81 1/2 W

S 58° E

2740

10.0

35.5

34.5

13

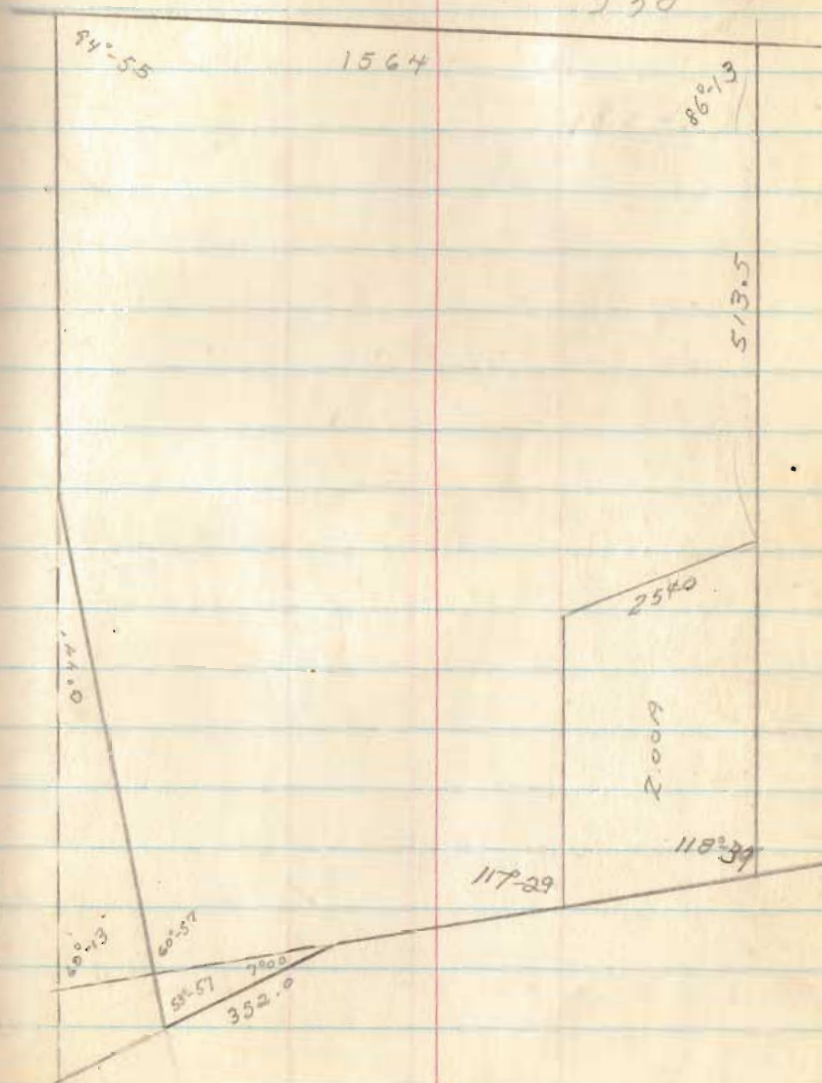
309.0

270.0

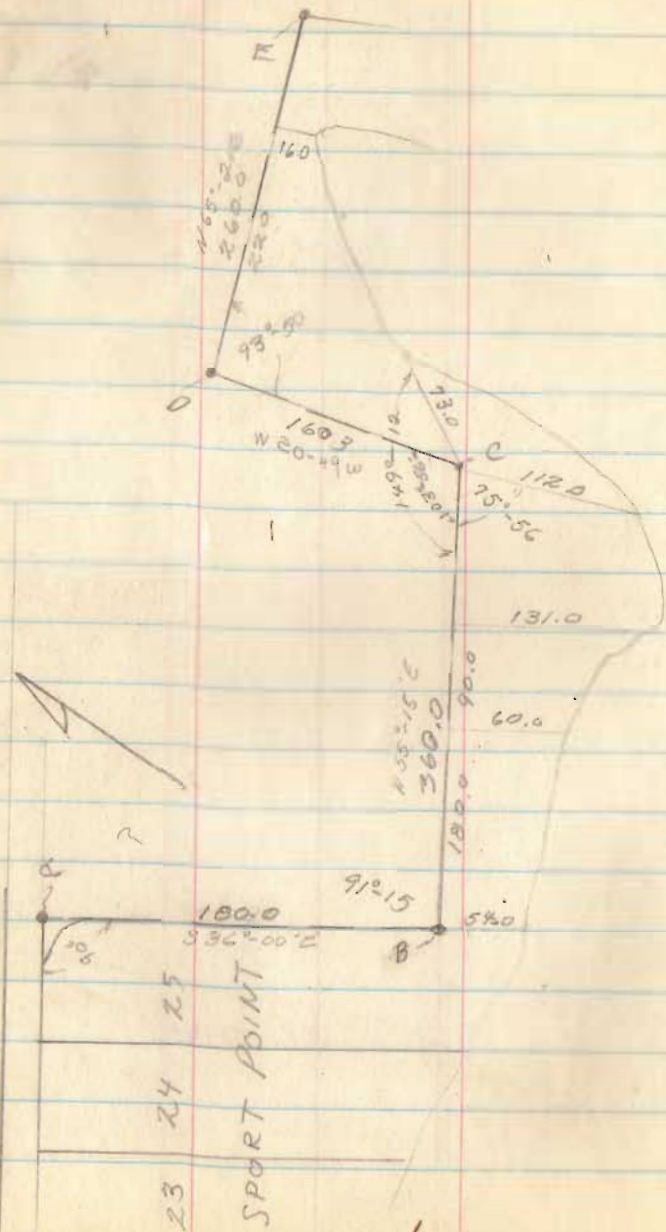
43

1073

332

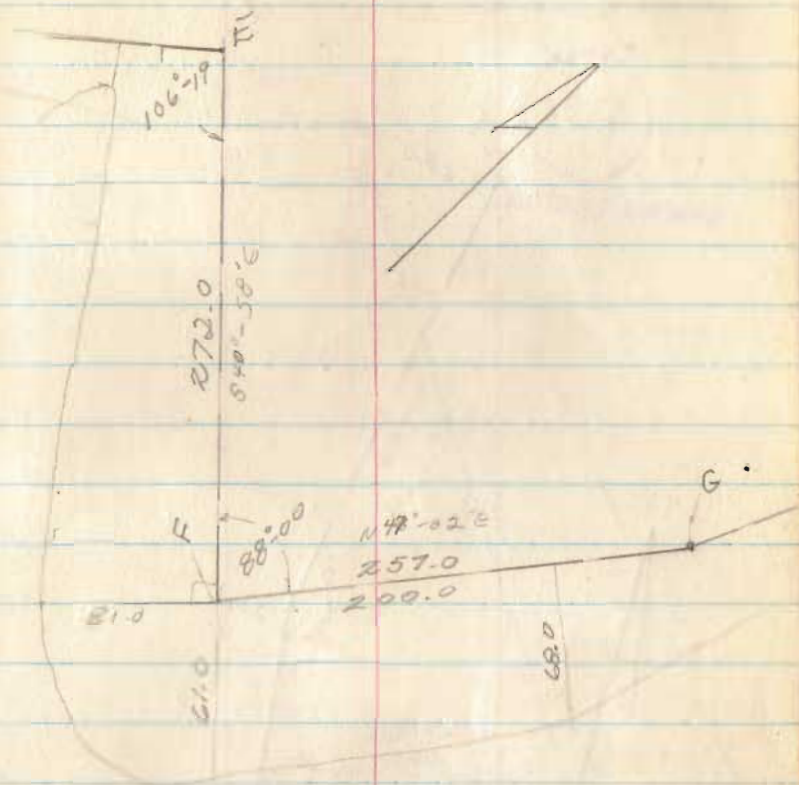


Pony Isl.



MAR. 19, 62

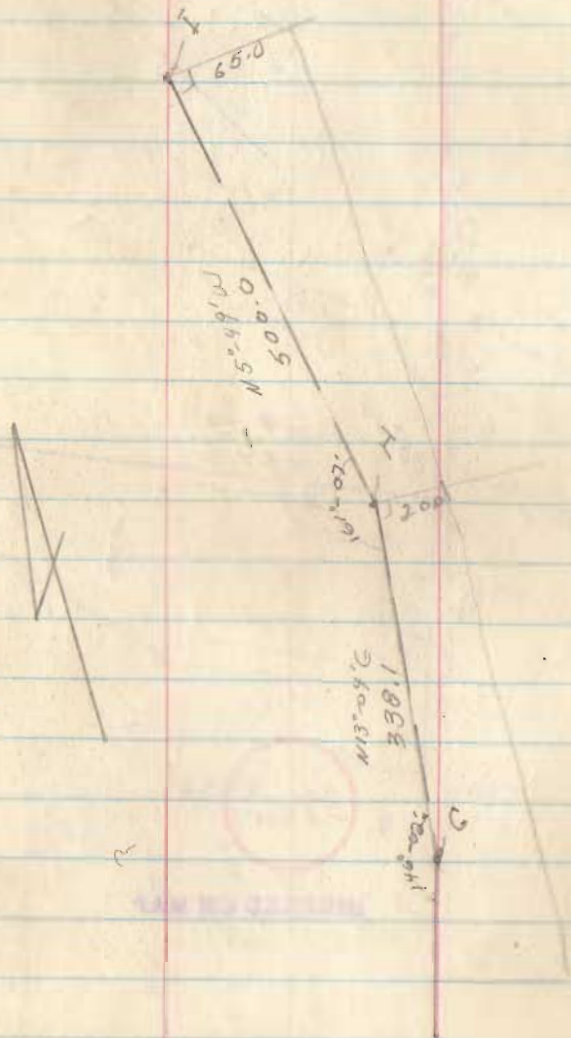
45



3920

INDEXED ON MAP

Pony Isk.

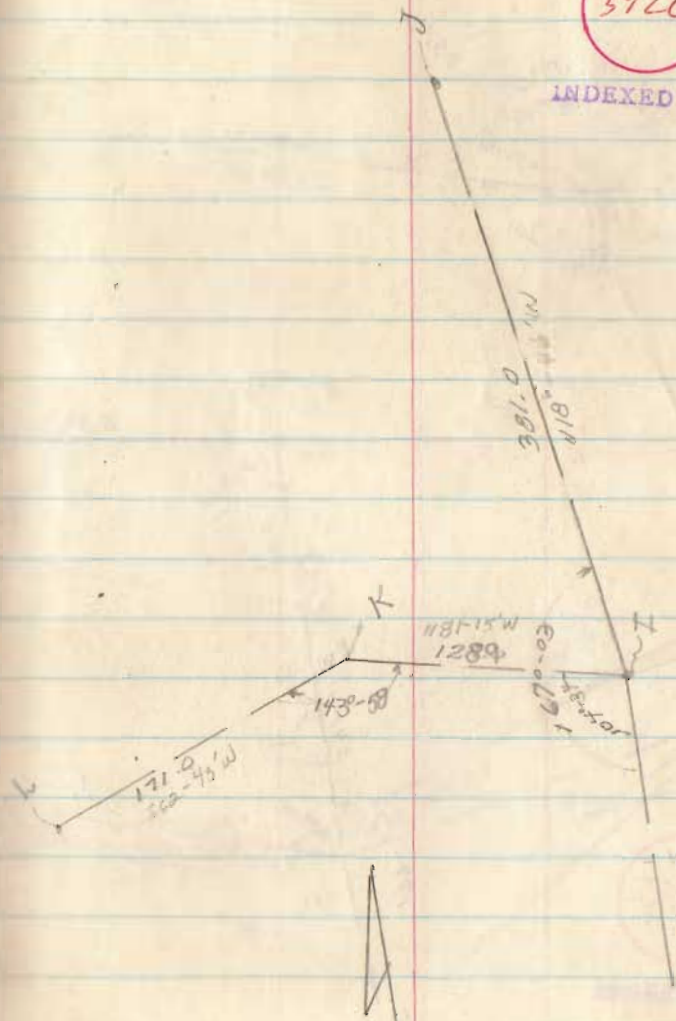


MAR. 10

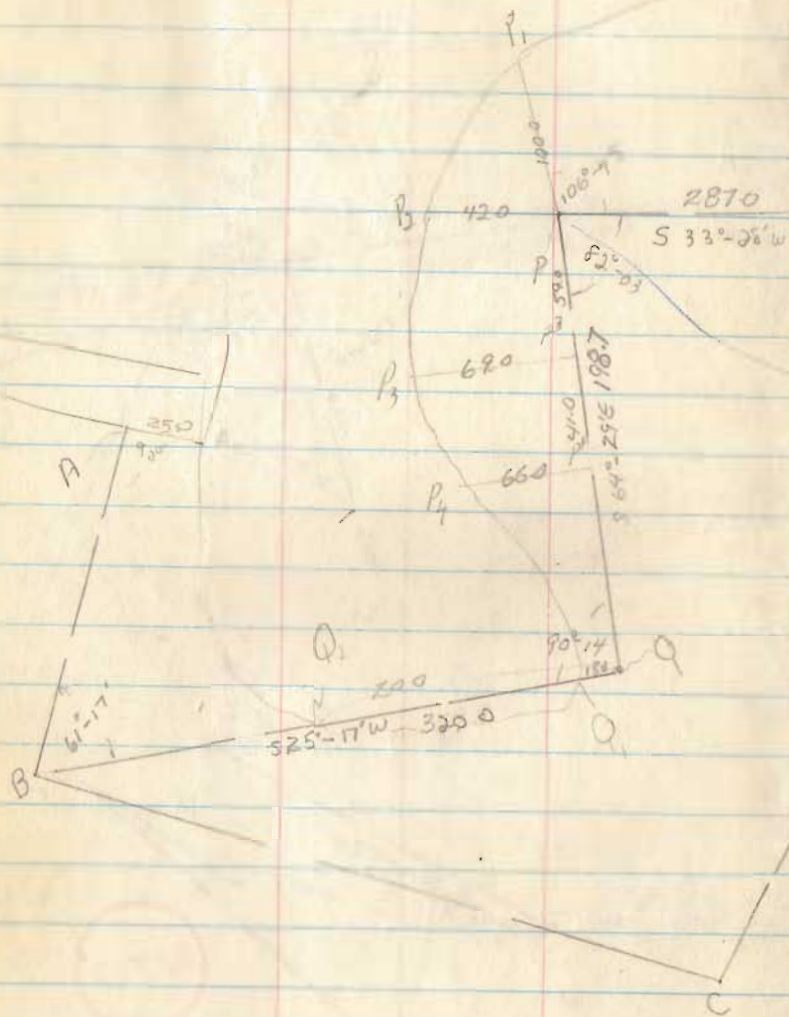
46

3920

INDEXED ON MAP

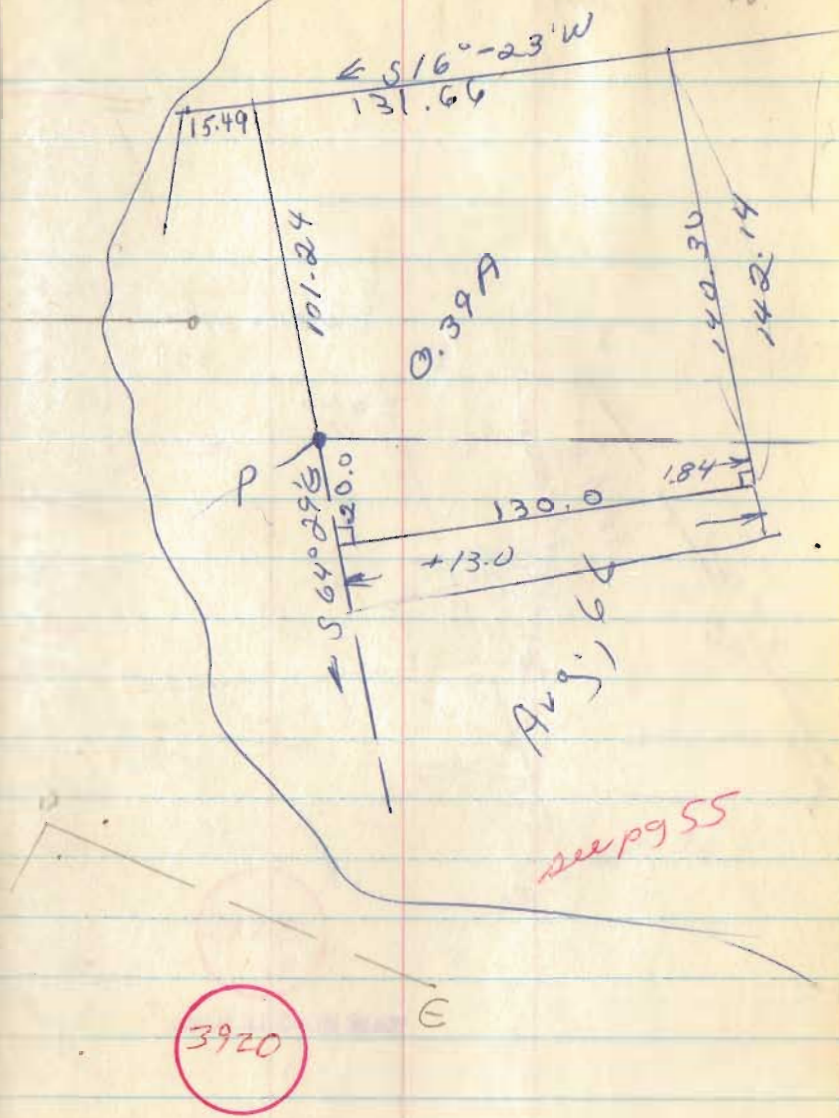


Pony Isk



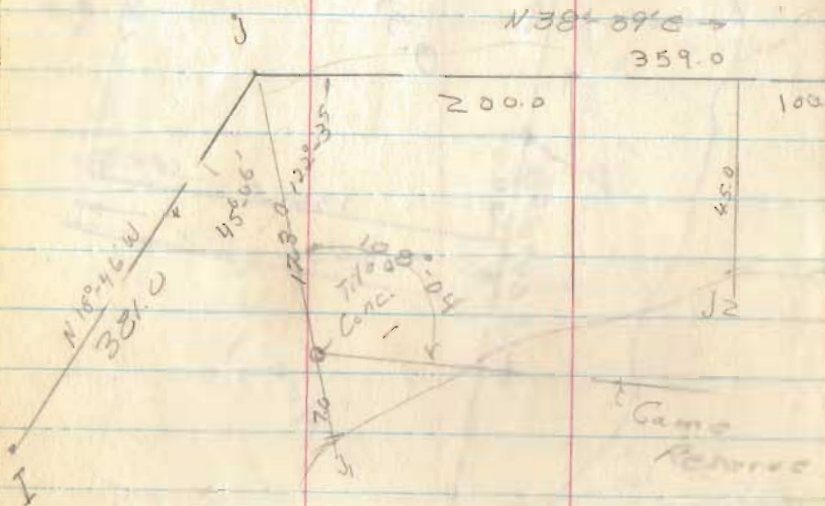
MAR 24

48



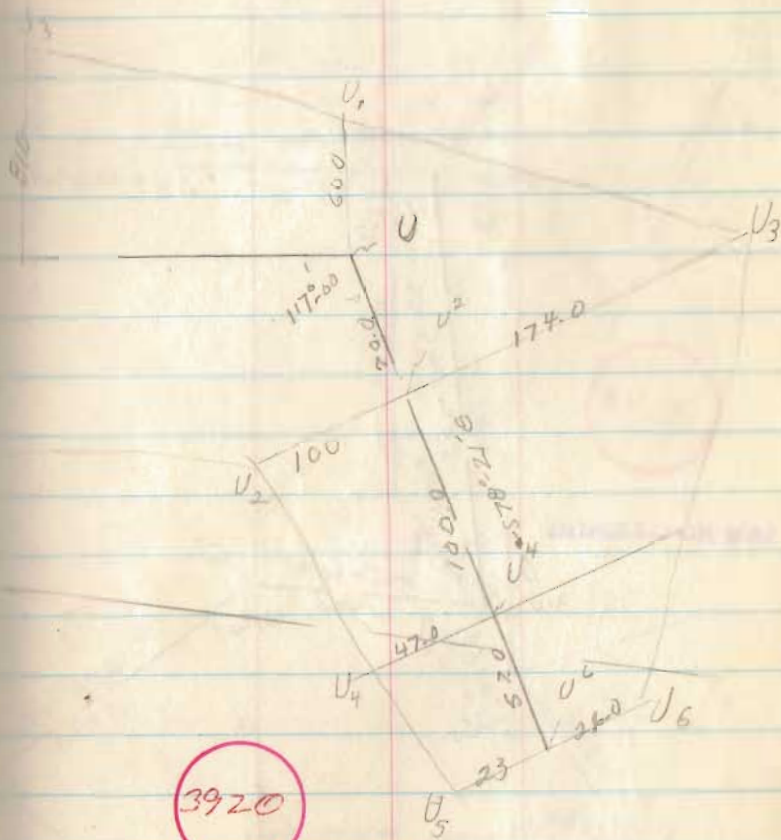
INDEXED ON MAP

PONT 1st.



MAR 24

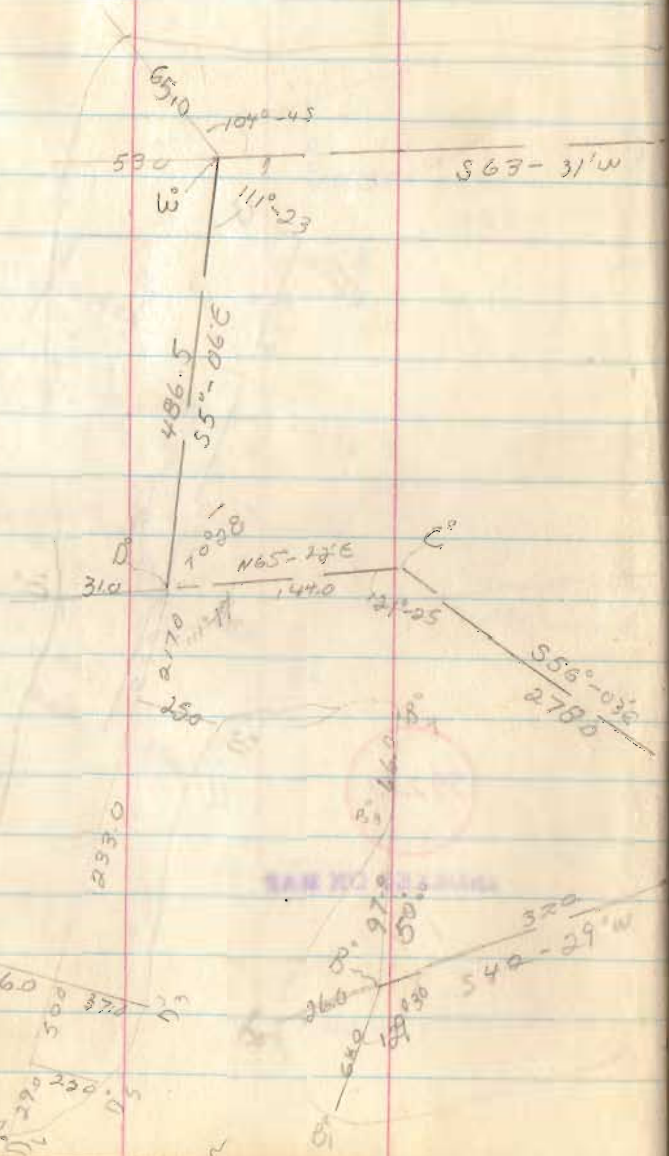
49



INDEXED ON MAP

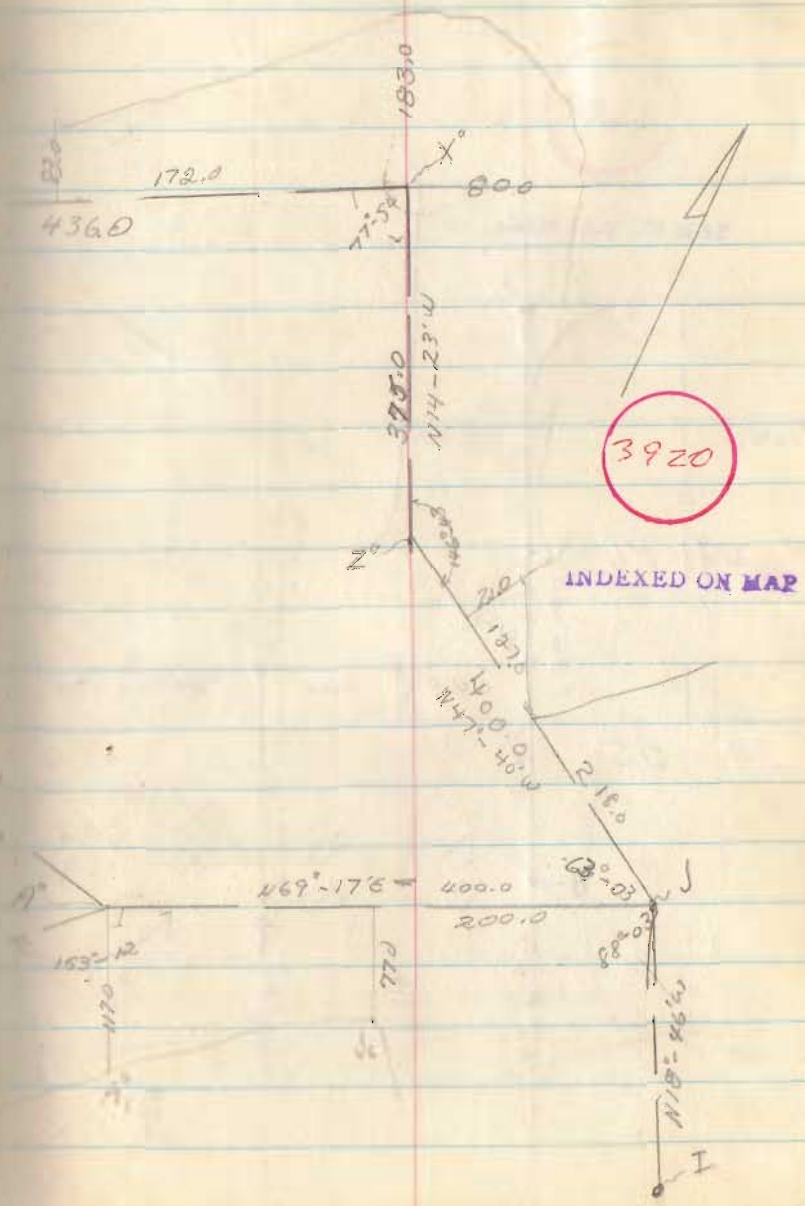
Pony Isl

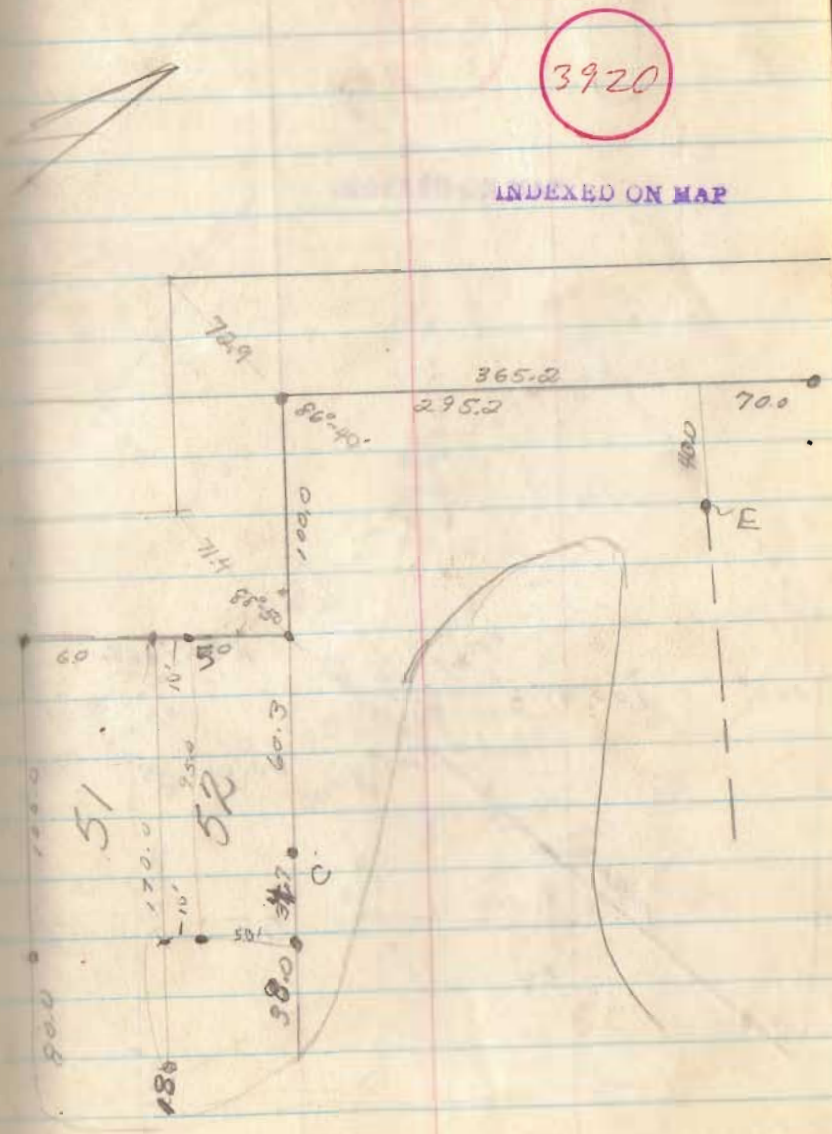
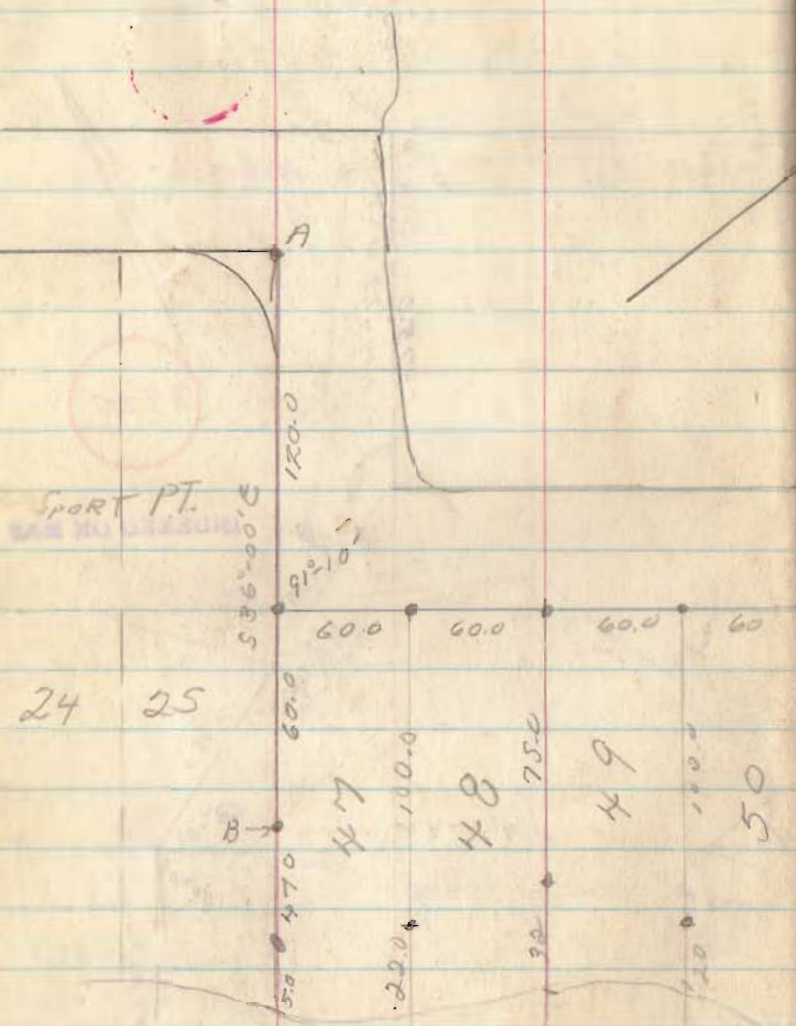
217
233
50
57
529

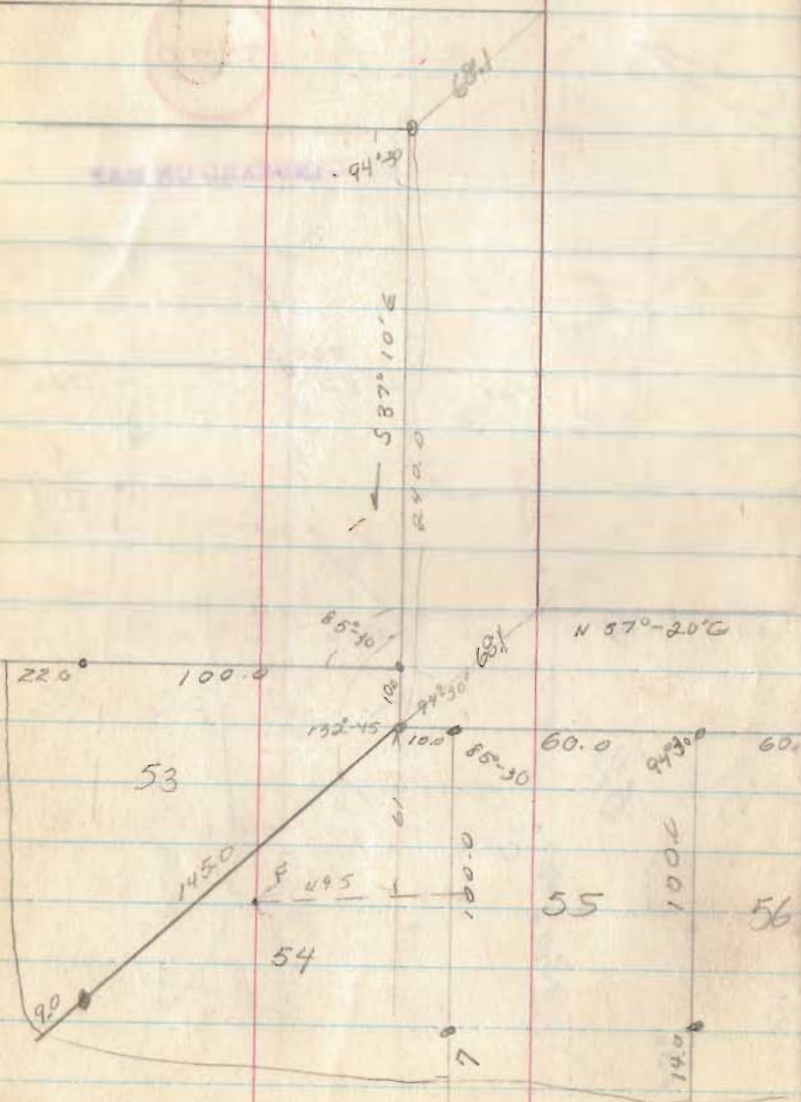


April 7 62

.50

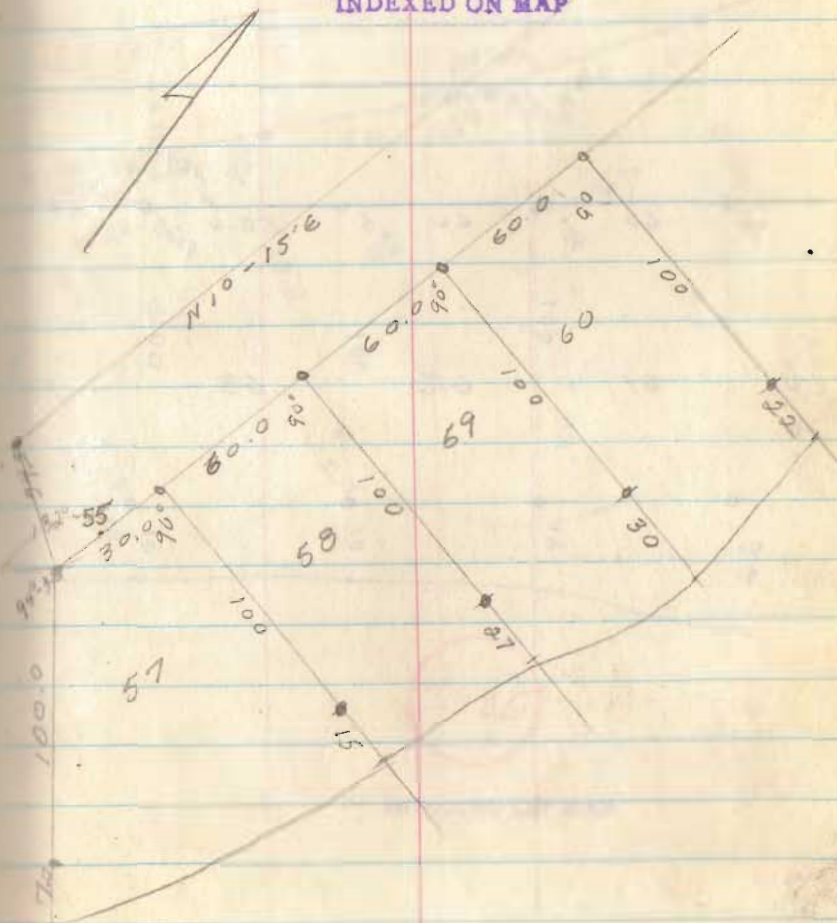




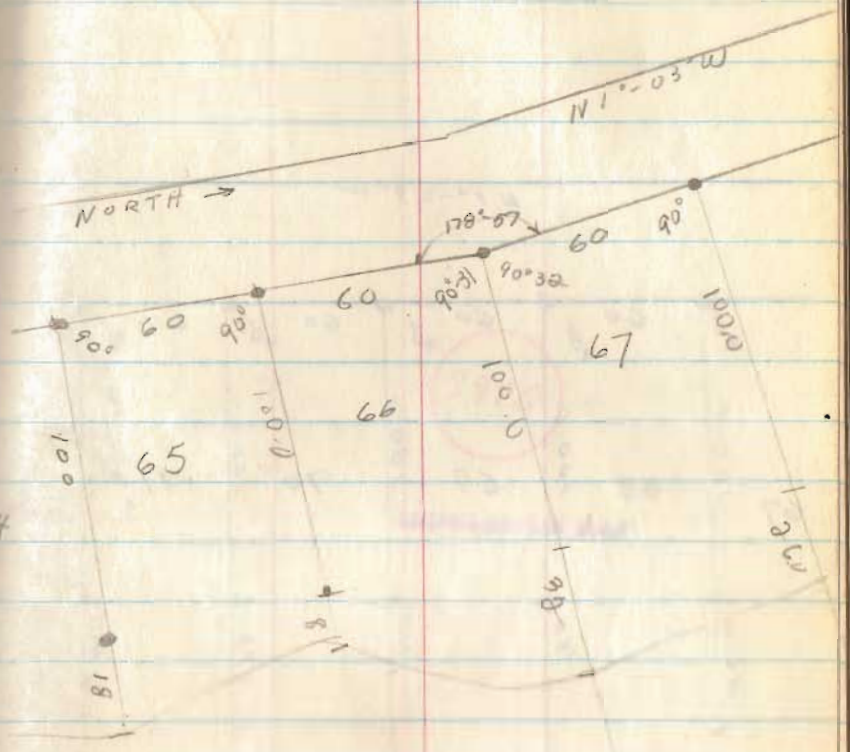
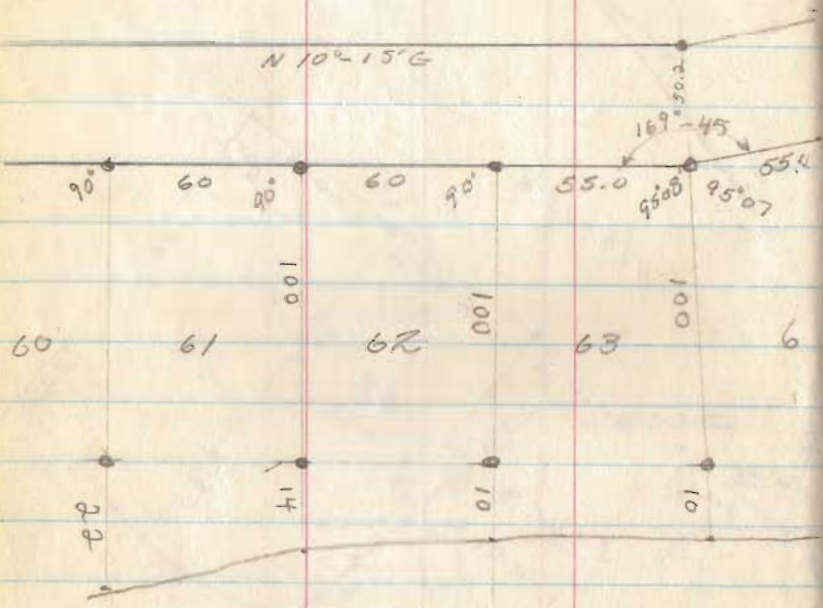


3920

INDEXED ON MAP

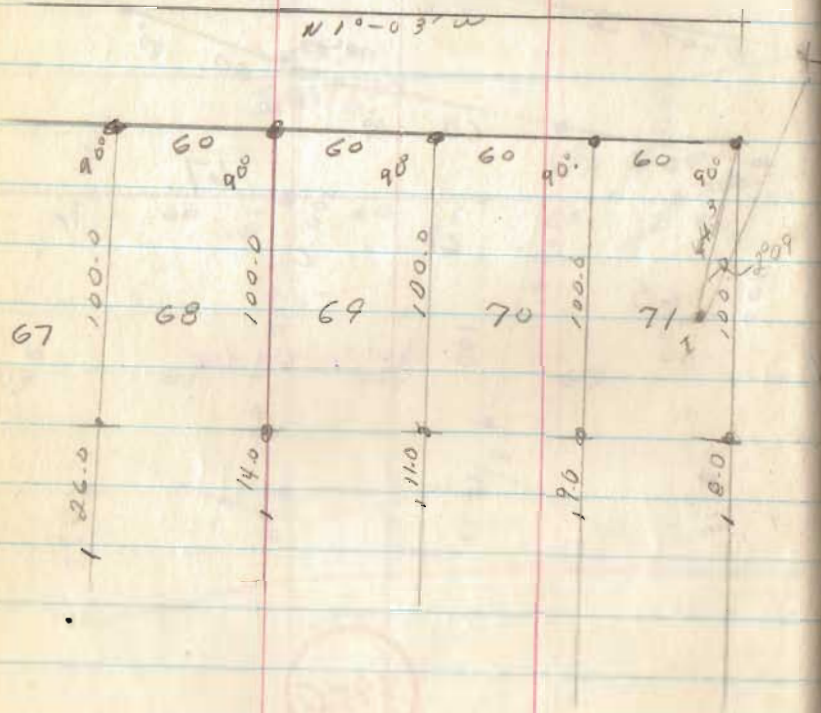


INDEXED ON MAP



3920

INDEXED ON MAP



3920

INDEXED ON MAP

