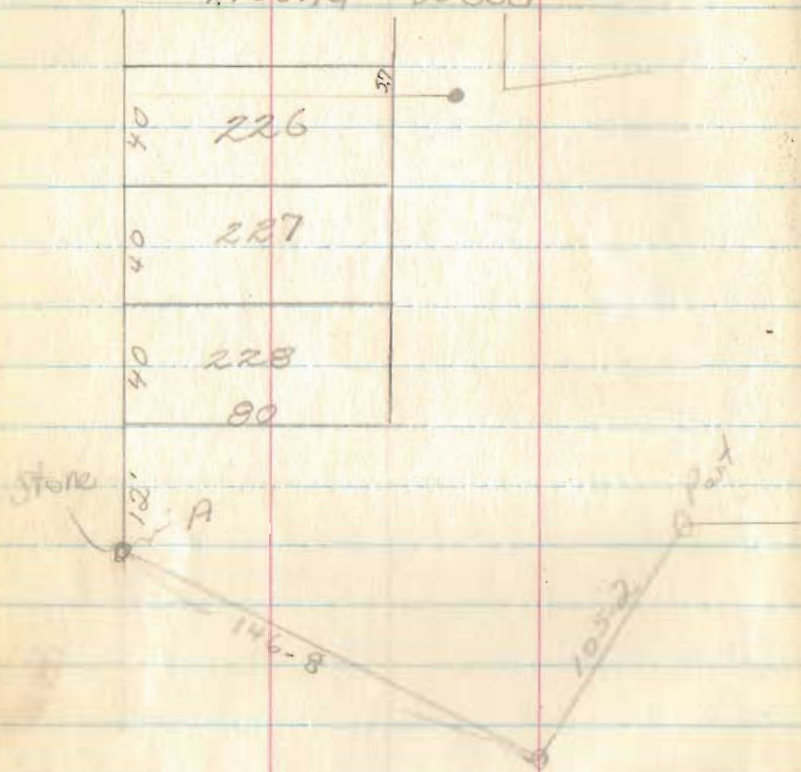
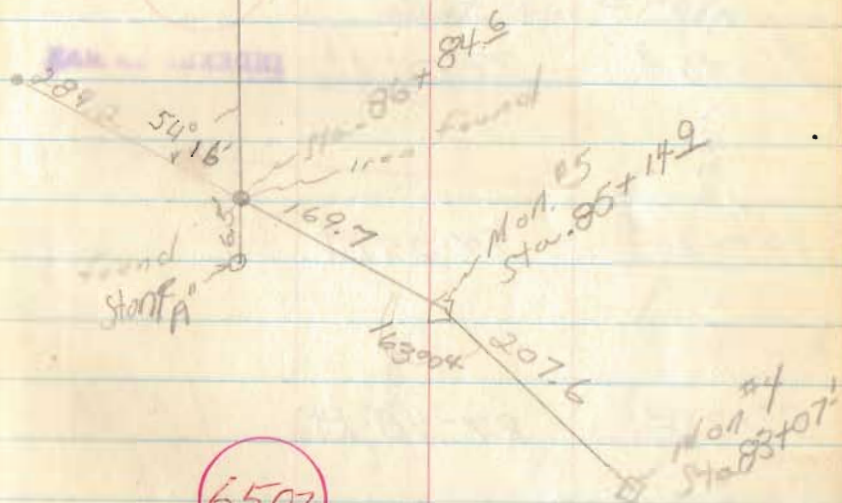


Wonders line
by
Mound Wood



June, 1961



INDEXED ON MAP

105+70⁵

112-33 Rt

5570

1007+13²

102-28 Rt

110.2

6502

INDEXED IN MAP

96+95³?

74-11 Lt

234.1

94+61²

94-25 Rt

407.4

89+73⁰

87-48 Rt

150.2

85+14¹

16-56 Lt

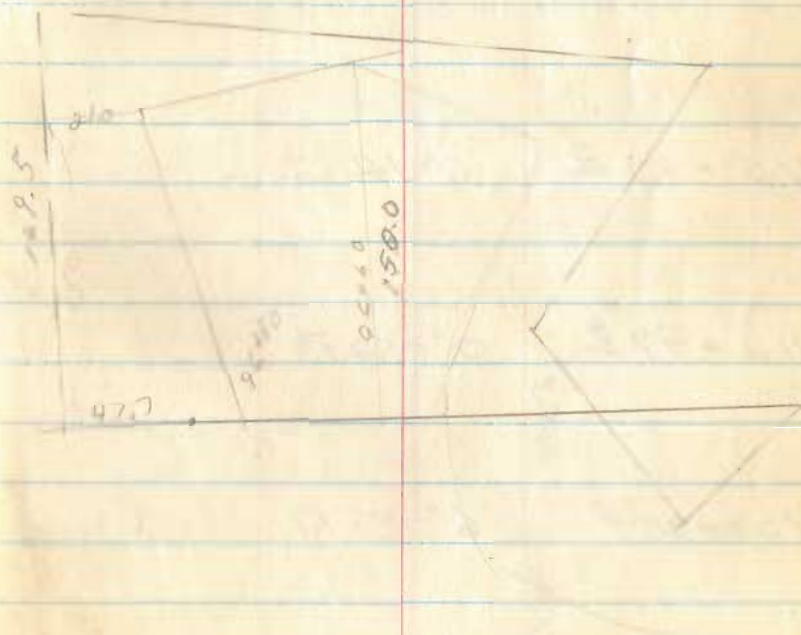
507.6

83+07¹

Also see Plat Book "C"
pg 228,

Survey made June &
July, 1892 by

Henry C. Moore
Dept. Co. Engr



6502

INDEXED ON MAP

115 + 90 ^B

6°-12' Lt.

112 + 97 ^B

0°-52' Rt

539.3

107 + 38 ^S

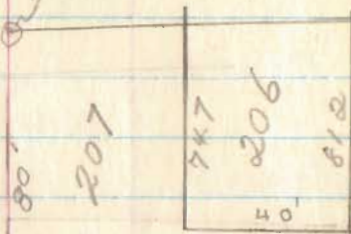
6°-59' Rt

1680

105 + 70 ^S

stone indicators

3



#	Sta.	Bearing	Defl.
4	83+07.1	N 44°-21' W	67-28' L
5	85+14.9	C	16-56 L
	88+07	N 61°-17' W	
π	89+73.8	C	87°-48' R
	91+91.5	N 26°-31' E	
	94+21		
π	94+61.2	C	94°-25' L
	95+71		
	96+32		
	96+40	N 67°-54' W	
	96+08.3		
	96+60		
	96+80		
π	96+95.3		74° 11' L
	97+79	S 37°-54' W	
π	100+13.5	C	102-28' Rt.
	102+84.5	N 39°-38' W	
	102+99.7		
π	105+70.5	C	112° 33' R

2028
 2029
 2030
 2031
 2032
 2033
 2034

Note

* All "Lefts" or "Rights" at turning pt. are L to bearing immediately preceding

$$\frac{66L}{49}$$

$$\frac{17L}{49}$$

$$\frac{14L}{50}$$

$$\frac{21L}{49}$$

$$\frac{59L}{50}$$

$$\frac{6L}{49}$$

$$\frac{22L}{50}$$

$$\frac{14R}{50}$$

$$\frac{18L}{49}$$

$$\frac{31L}{49}$$

$$\frac{98L}{49}$$

$$\frac{48L}{49}$$

2 Meas
 Meas res 0.17

6502

INDEXED ON MAP

Edge of water

$$\frac{110R}{50}$$

$$\frac{109R}{49}$$

$$\frac{175R}{50}$$

$$\frac{150R}{49}$$

Edge of water

Produced 47.7 to pt; then

$$\frac{53R}{50}$$

$$\frac{39R}{49}$$

$$\frac{169.5R}{50}$$

Produced 20' to 49 Cent; +

$$\frac{49.5R}{50}$$

$$\frac{49L}{49}$$

$$\frac{37L}{50}$$

$$\frac{60L}{49}$$

$$\frac{53L}{49}$$

Produce 16' to 49 +

$$\frac{26L}{49}$$

Sta.	Bearing	Defl.
π 105+70.5	C	112°-33R
	N 72°-56'E	
π 107+38.3	C	6-59R
	N 79-55'E	
π 112+97.8	C	0°-52'R
	N 80-47'E	
π 115+90.8	C	6°-12L
117+02	N 74-35E	
π 119+10.4	C	33-56L
	N 40-39'E	
1 122+00.7	C	44-26R
123+83.4		
124+72.3	N 85-05E	
125+40.3		
π 125+58.3	C No 10	31-54R
129+50	563-02'E	
π 130+73.3		56-23 1/2 L
133+11	N 60-35 1/2 E	
π 134+81.3		55-15R

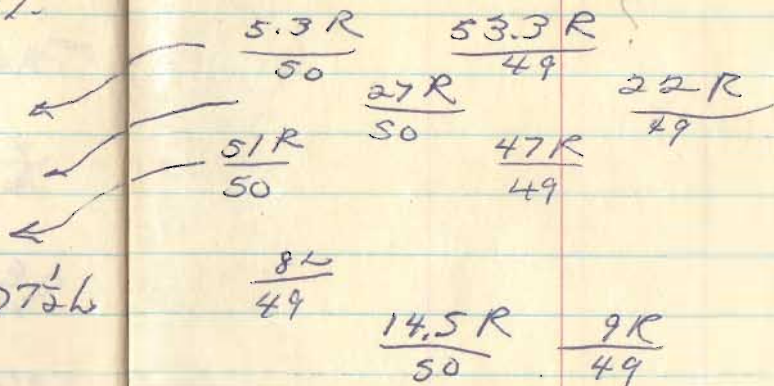
Produced 16' to 49' ~~49'~~ $\frac{26h}{49}$

$\frac{4'L}{49}$		
$\frac{6'L}{49}$	$\frac{32.0}{49}$	
$\frac{9'L}{49}$		
$\frac{17'L}{50}$	$\frac{26L}{49}$	
$\frac{6L}{49}$		
$\frac{5L}{49}$	$\frac{34.5R}{50}$	$\frac{32.R}{49}$
	West side of Private Dr.	East side of " Dr
$\frac{6'}{49}$	$\frac{40.4R}{50}$	$\frac{35.4R}{49}$
$\frac{31L}{49}$		
$\frac{6L}{49}$	$\frac{30.5L}{50}$	$\frac{41.5L}{49}$

6502

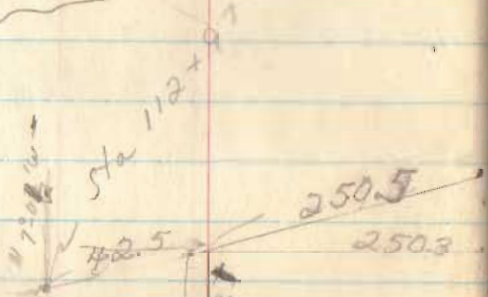
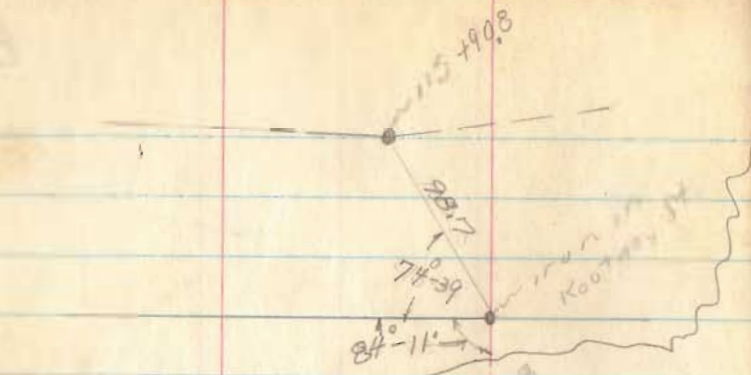
INDEXED ON MAP

Sta	Bearing	Defl.
134+81.3		
136+10	S 64-09 ¹ / ₂ E	
137+07		
138+90		
139+02.8	Mon #6	57-07 ¹ / ₂ W
141+03	N 58-43 E	
143+25.3	Mon #7	



6502

INDEXED ON MAP



271.2
 214.5
 316.1
 1052.1
 807.8
 250.3

6502

293.0
 250.5
 42.5

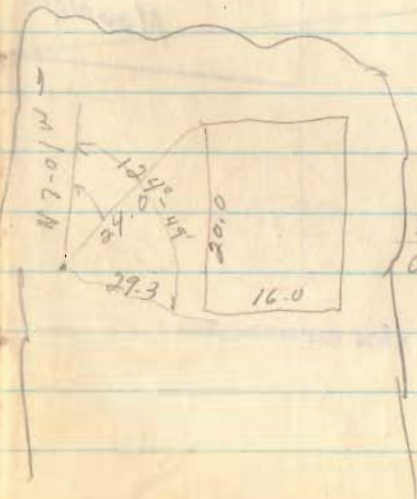
INDEXED ON MAP

138-50
 74-11
 74 39

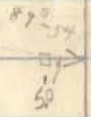
107401



1.8 # STREET
 1052.1
 Mound Wood Allott



97.5
 954.3
 1051.8
 5.0
 448.5
 500.8
 99.5
 1051.8



57008.6

Sta 124 + 72

West Side of Moundwood Allot.

126.3'

80.0

17.5

Mohawk 4750

84-10 186

185

350
376.10

KOOTENAY

148

147

PANTHAC

109

93.24

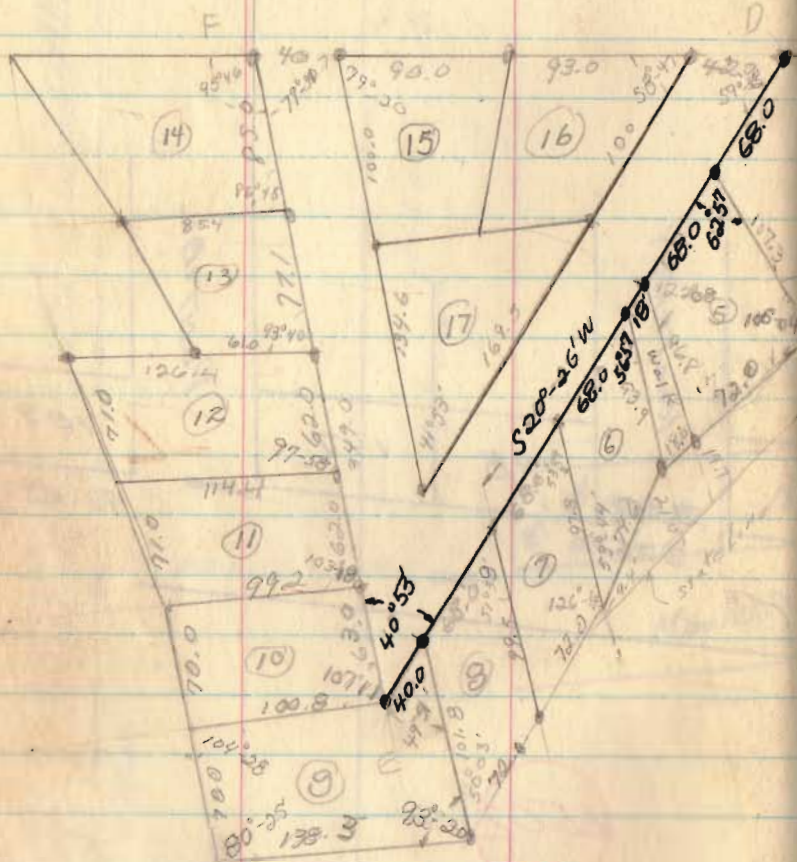
MOUND Ave

store

6502

INDEXED ON MAP

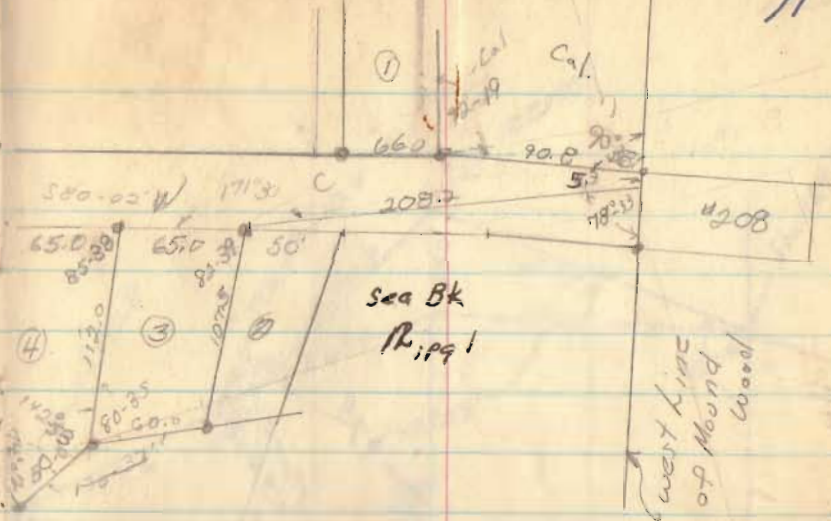
HEDGES SUB.



5861

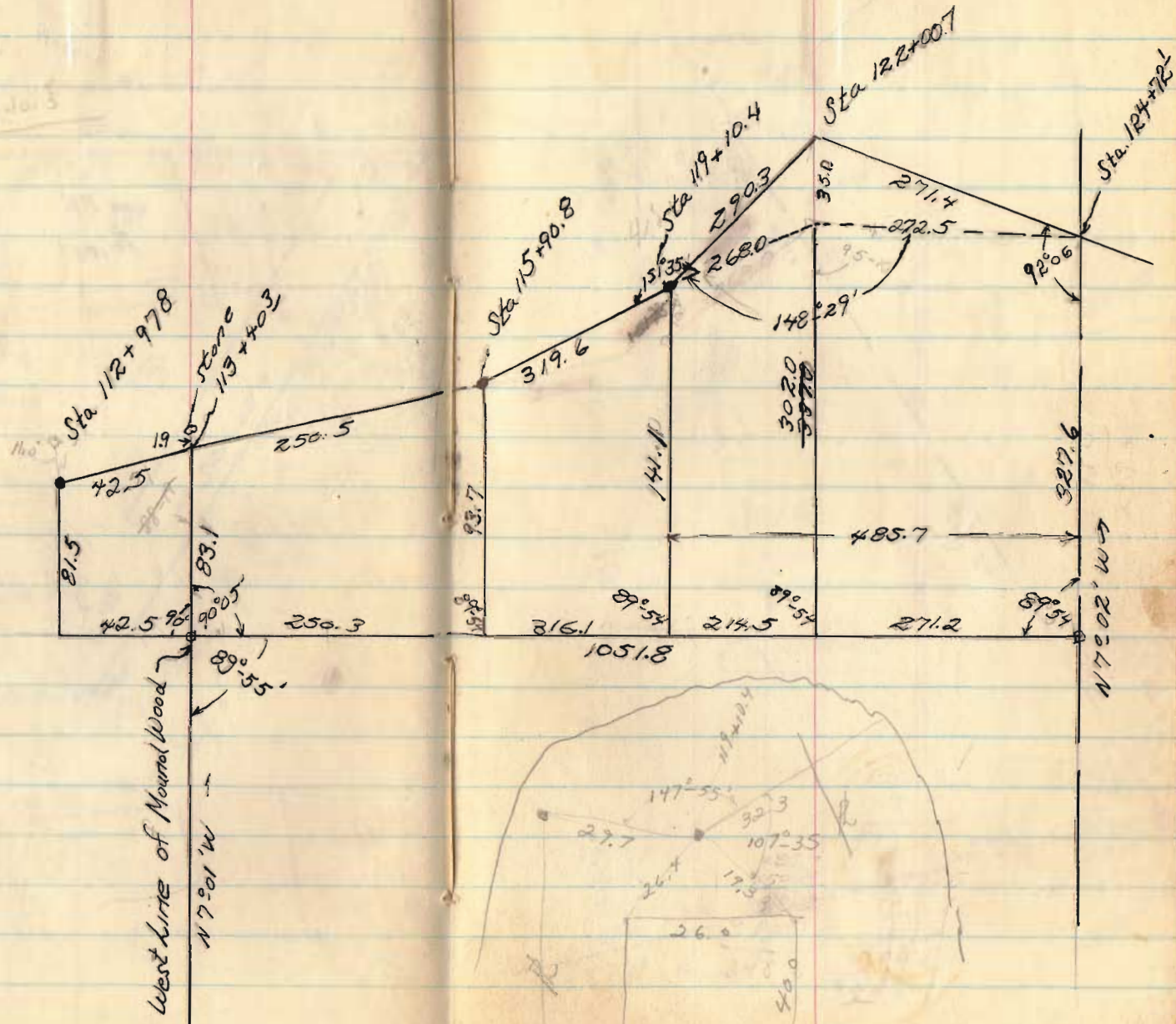
INDEXED ON MAP

11



This survey was made
in June, 1961 as the iron
pins actually exist!





Sta 112+978

Stone
Sta 113+40.3

Sta 115+90.8

Sta 119+10.4

Sta 122+00.7

Sta 124+72.1

West line of Mound Wood

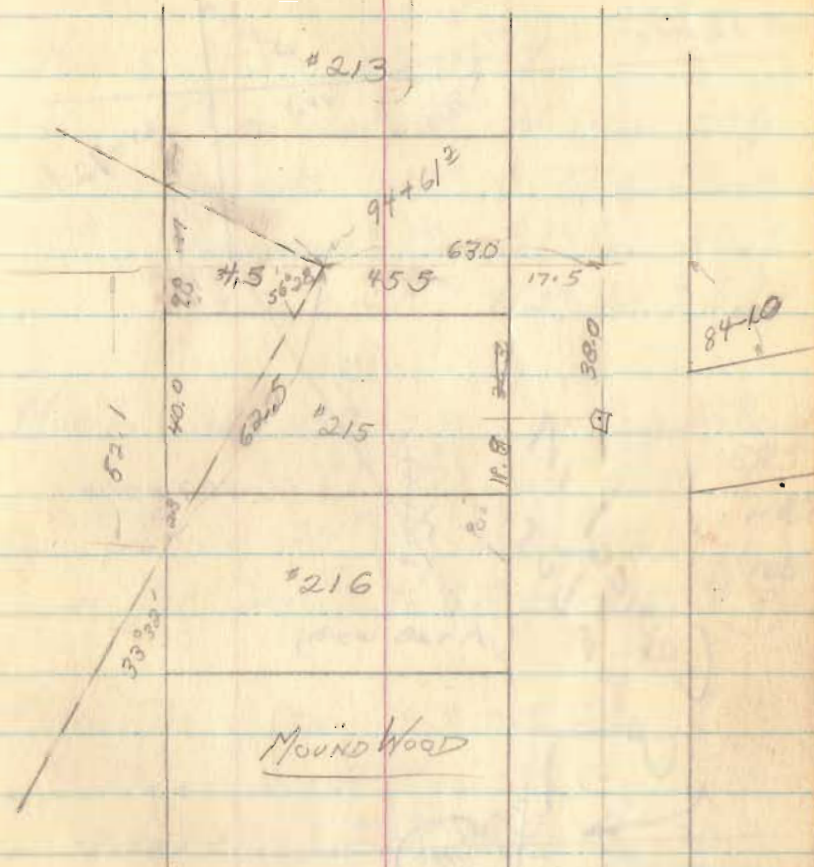
N 7° 01' W

N 7° 02' W

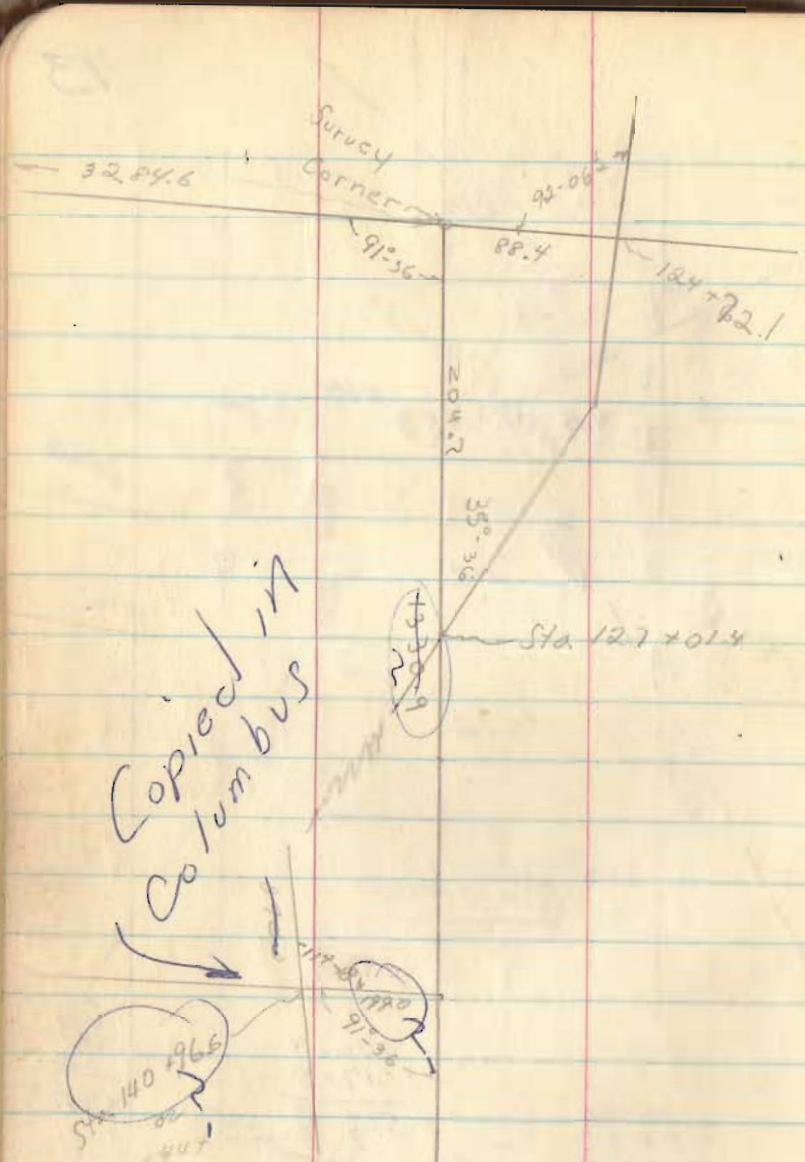
1051.8

26.0

40.0



126.3	523.2
417.5	52.1
548.8	575.3
2.5	543.8
337.3	31.5
	6.5
	38.0
114.3	
417.5	
531.8	



Mon 5 Sta 85+14.9

- Sycamore 8" N 33 $\frac{1}{2}$ ° E 27.0'
- Sugar 14" S 77° E 12.3
- Sycamore 8" S 74 $\frac{1}{2}$ ° E 23.3
- Red Oak 8" N 23° W 35.1

Mon 6 Sta 139+2.8 In Spencers Barn

- Walnut 16" S 77 $\frac{1}{2}$ ° W 88.9 88.5'
- Sugar 24" S 59 $\frac{1}{2}$ ° W 112.0' 110.5'
- NW Cor. Spn. Barn S 77° E 106.5' (New Barn) 109 P

Mon 7 Sta 143+85.3

- Sugar 24" S 50 $\frac{1}{2}$ ° E 32.5
- Sugar 22" S 44 $\frac{1}{2}$ ° W 20.3
- Sugar 10" S 78 $\frac{1}{2}$ ° W 25.9

30407
S 25 51 W

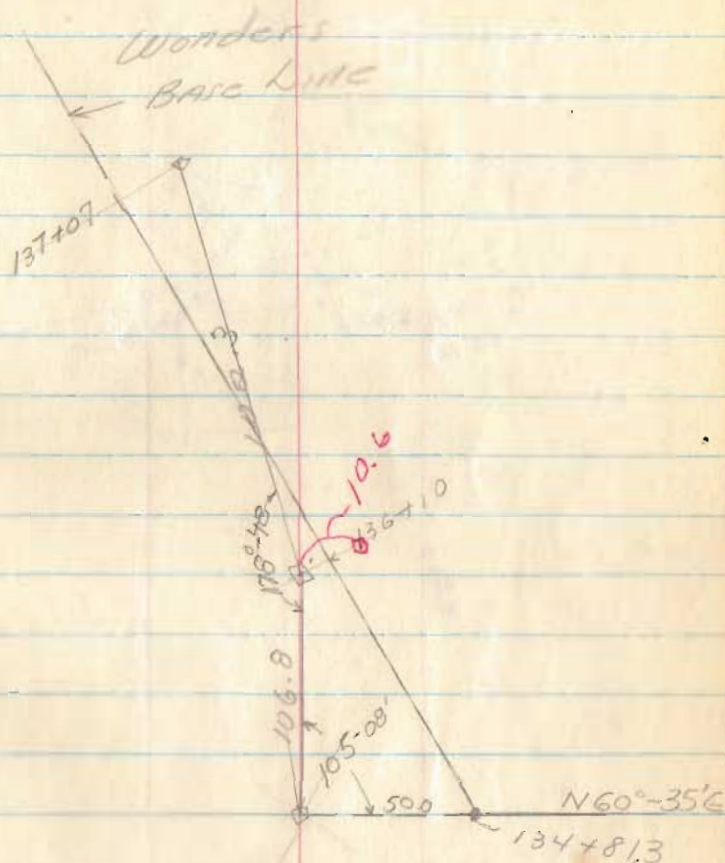
105-08

60-35

S 44-33 E

25 51

70-2.4



See pg. 18.

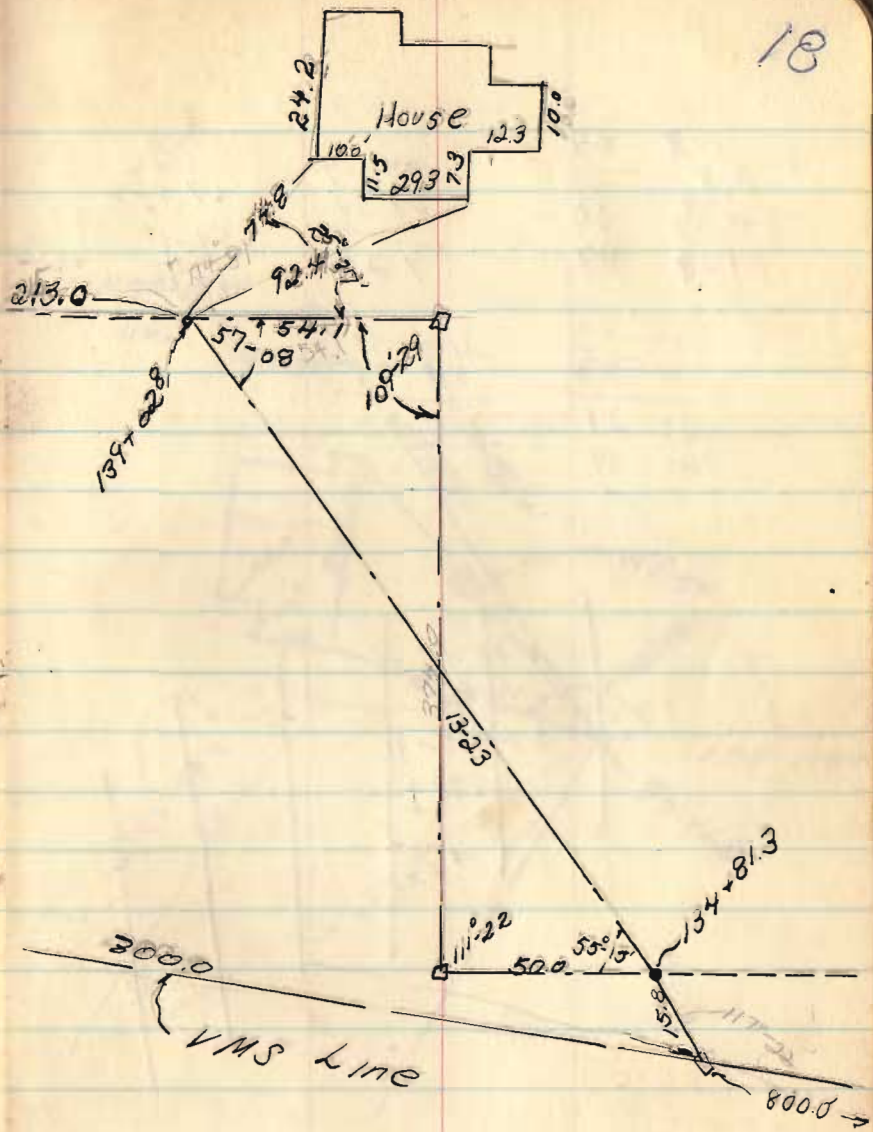
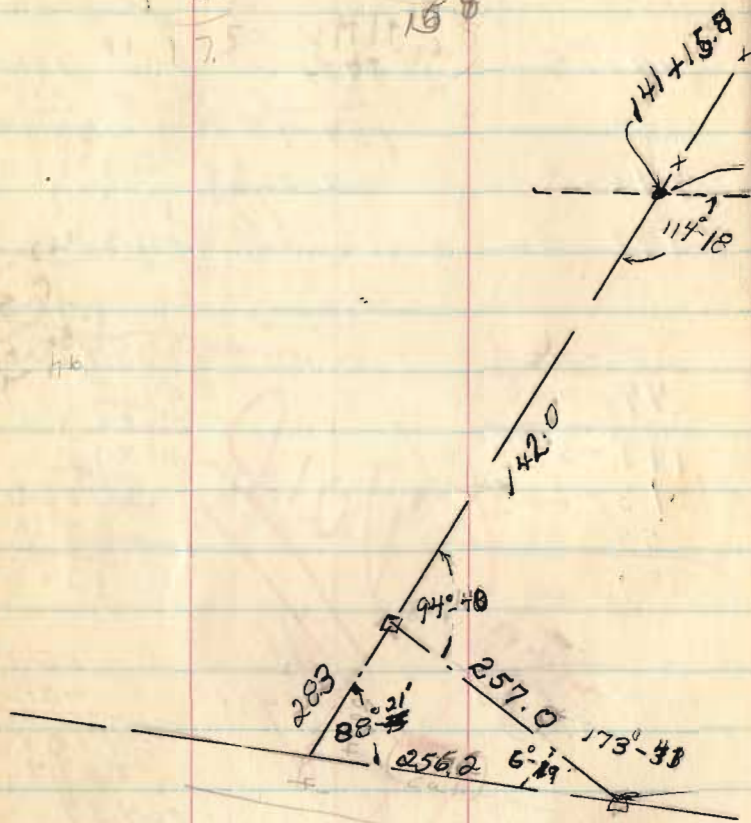


122 39
 123 34
 56 26

148 06
 147°-11'
 16



655
 719
 41



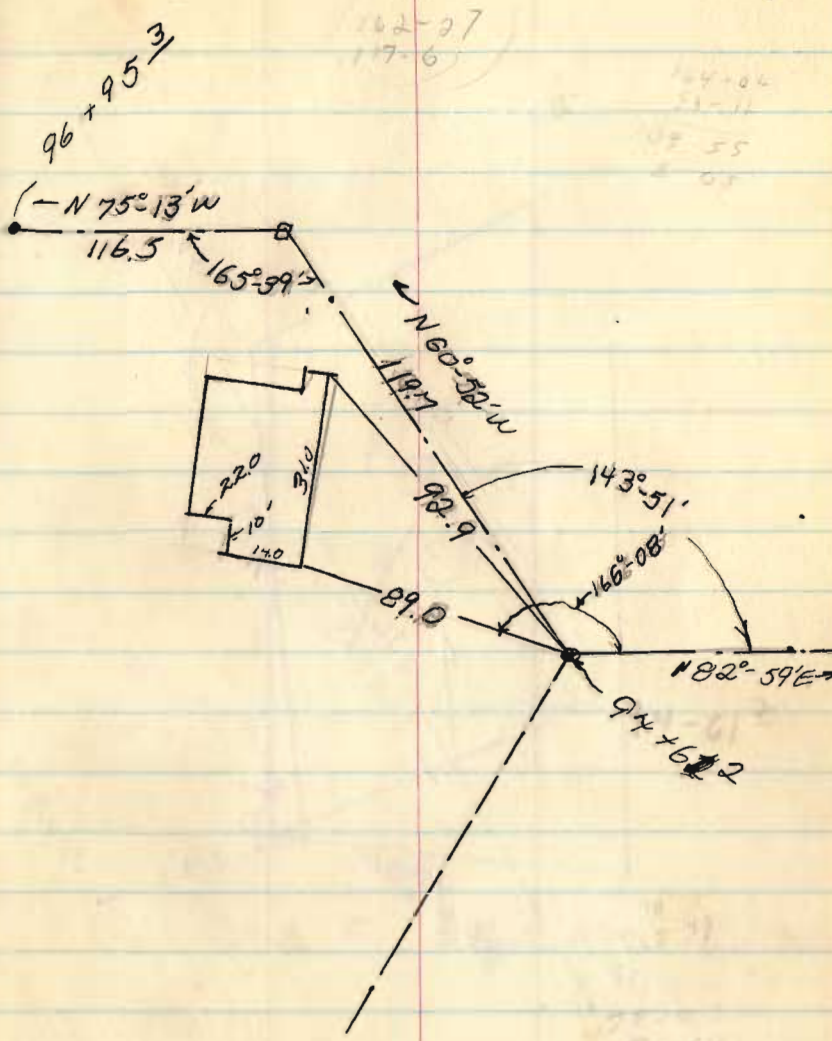
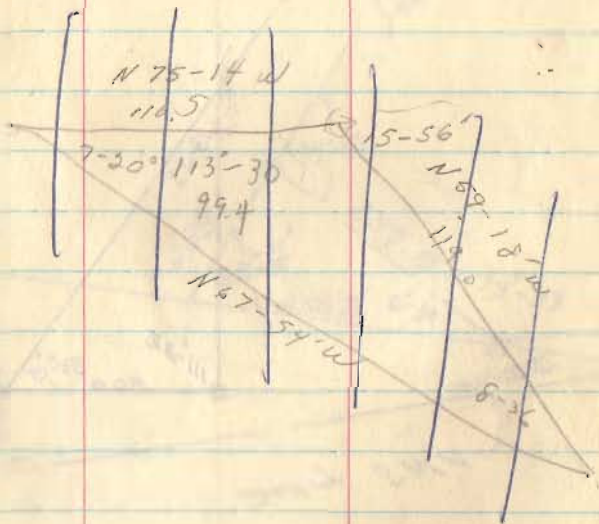
143 = 03
 N 82 - 54 E
 164 51
 N 60 84 W
 104 49

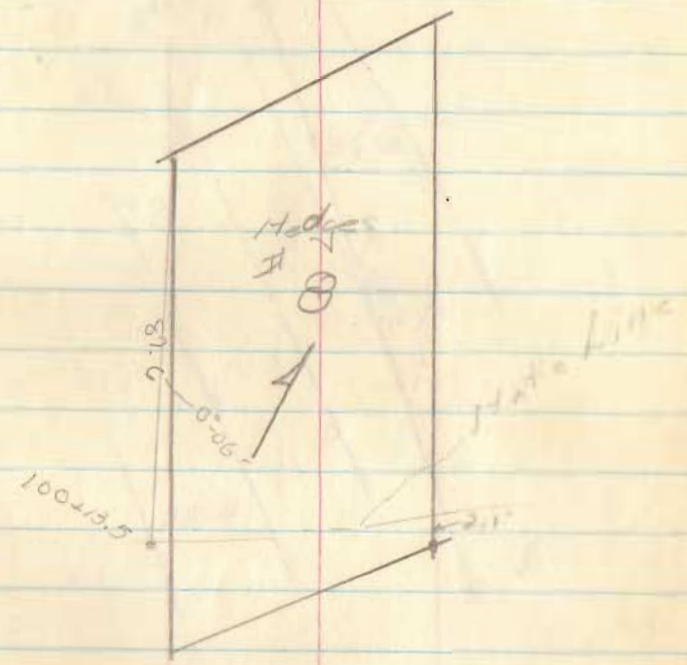
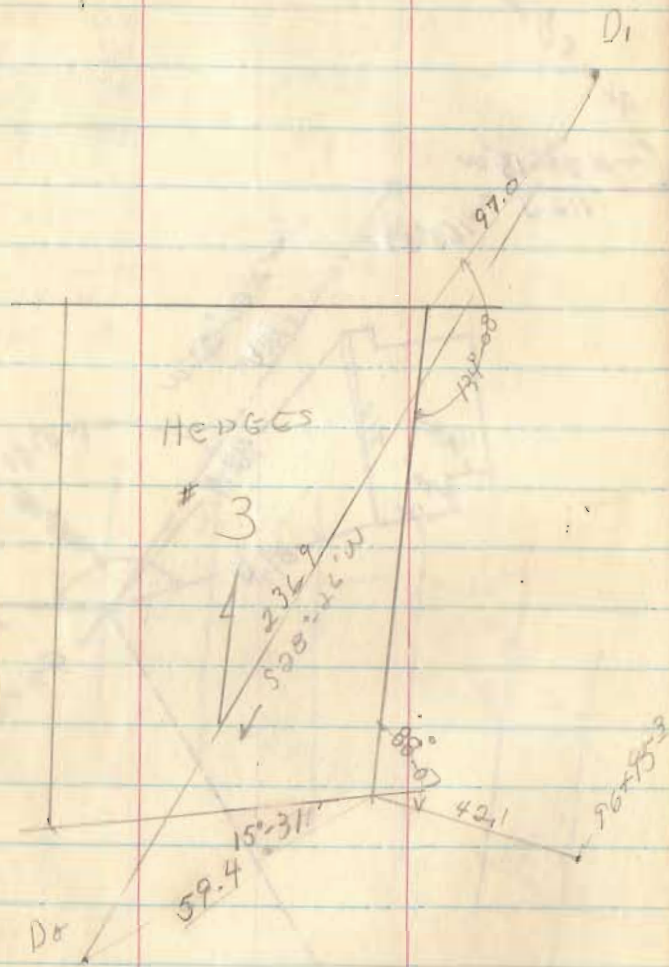
75-14
 67 54
 7 20

67 54
 59-18
 8-36

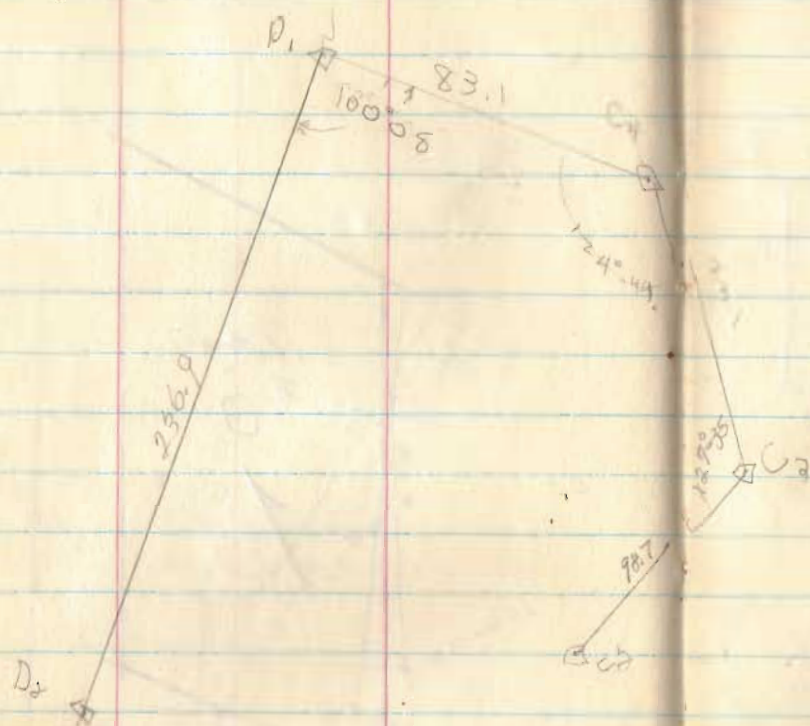
75-13
 60-50
 14 21
 105 39

143-51
 82 59
 60 52





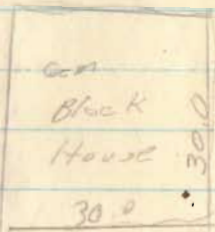
"Z to F" $62.8' N + 176.6' W$



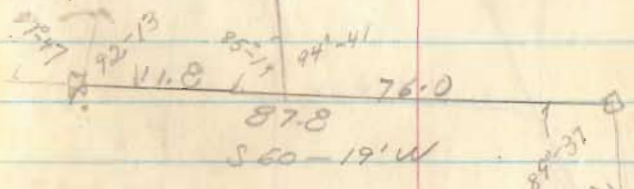
71-42
 28-28
 90-08

60
 11.0
 71.0

78-42
 28-28
 90-08



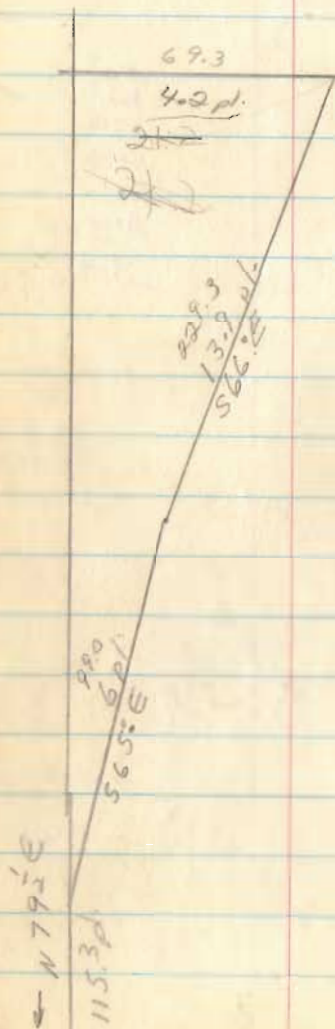
- 51.5
- 36.3
- 27.2
- 49.6
- 18.0
- 90.8
-
- 273.4



- 29-18
- 60-17
- 89-37

- 22-12
- 30-22
- 70-70

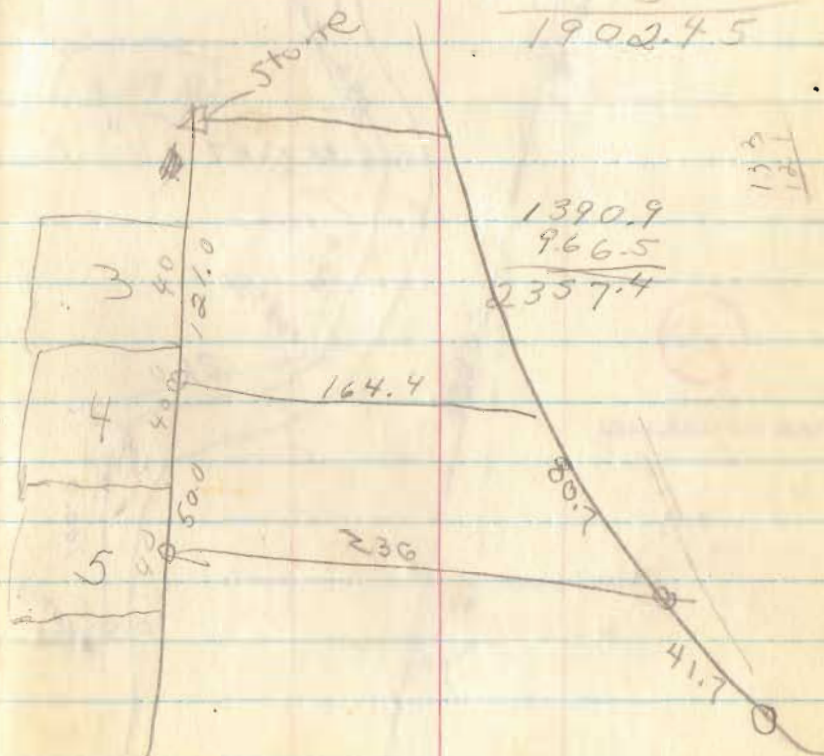
V.M.S. 9968
 Vol 41, pg 17,



Lease to
 Mrs Bertie Clark
 #590 'A'

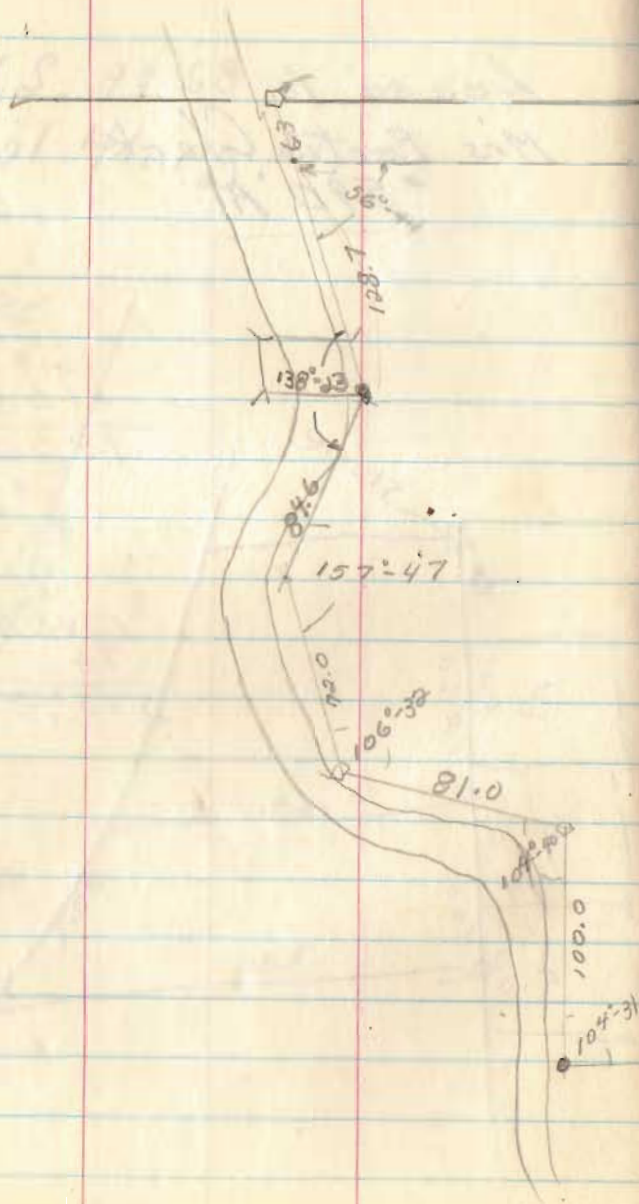
16.7
 4.2
 330
 628
 69.30

115.3
 16.5
 576.5
 6918
 1153
 1902.45



1390.9
 966.5
 2357.4

Girl Scout Camp



24

$84^{\circ}00'E$

526.0

Cor. Post

517.0

3.17 A

$71^{\circ}17'$

M. 80-411

6516

INDEXED ON MAP

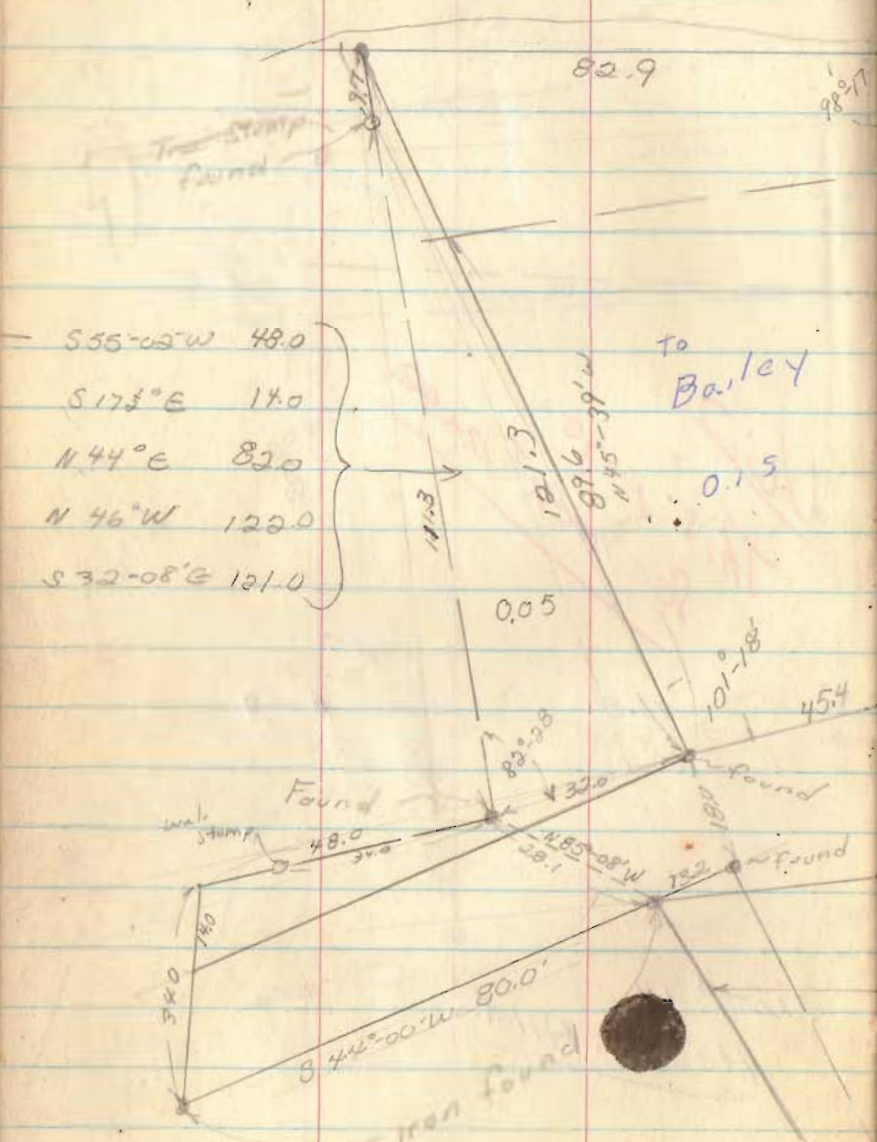
210.0

100.0

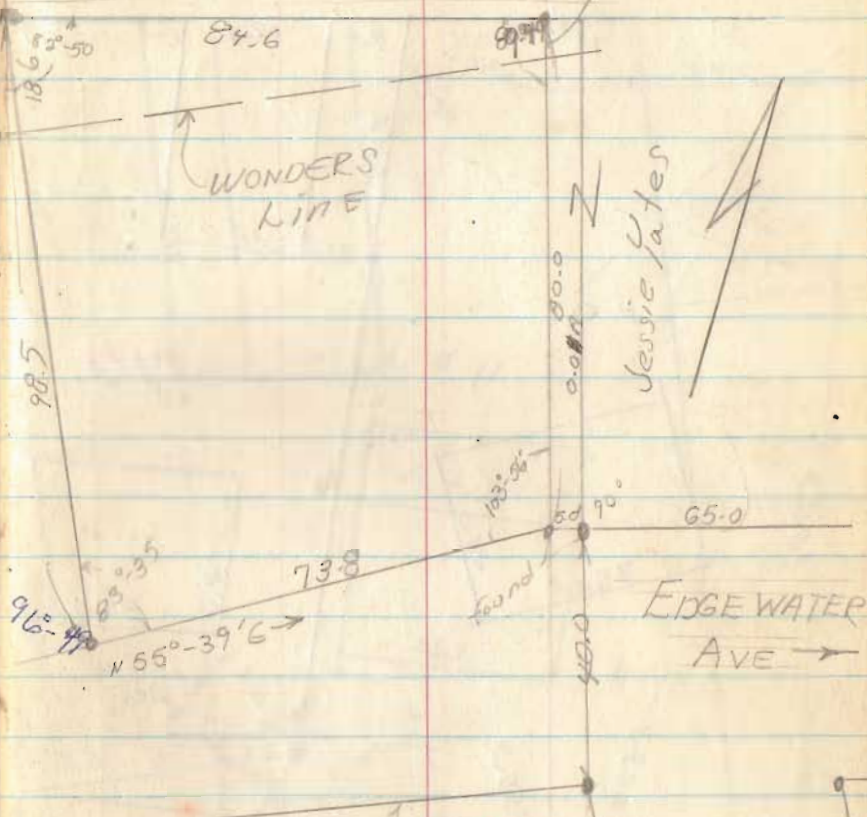
$106^{\circ}10'$

Alma Hedges

26



Miami River



5861

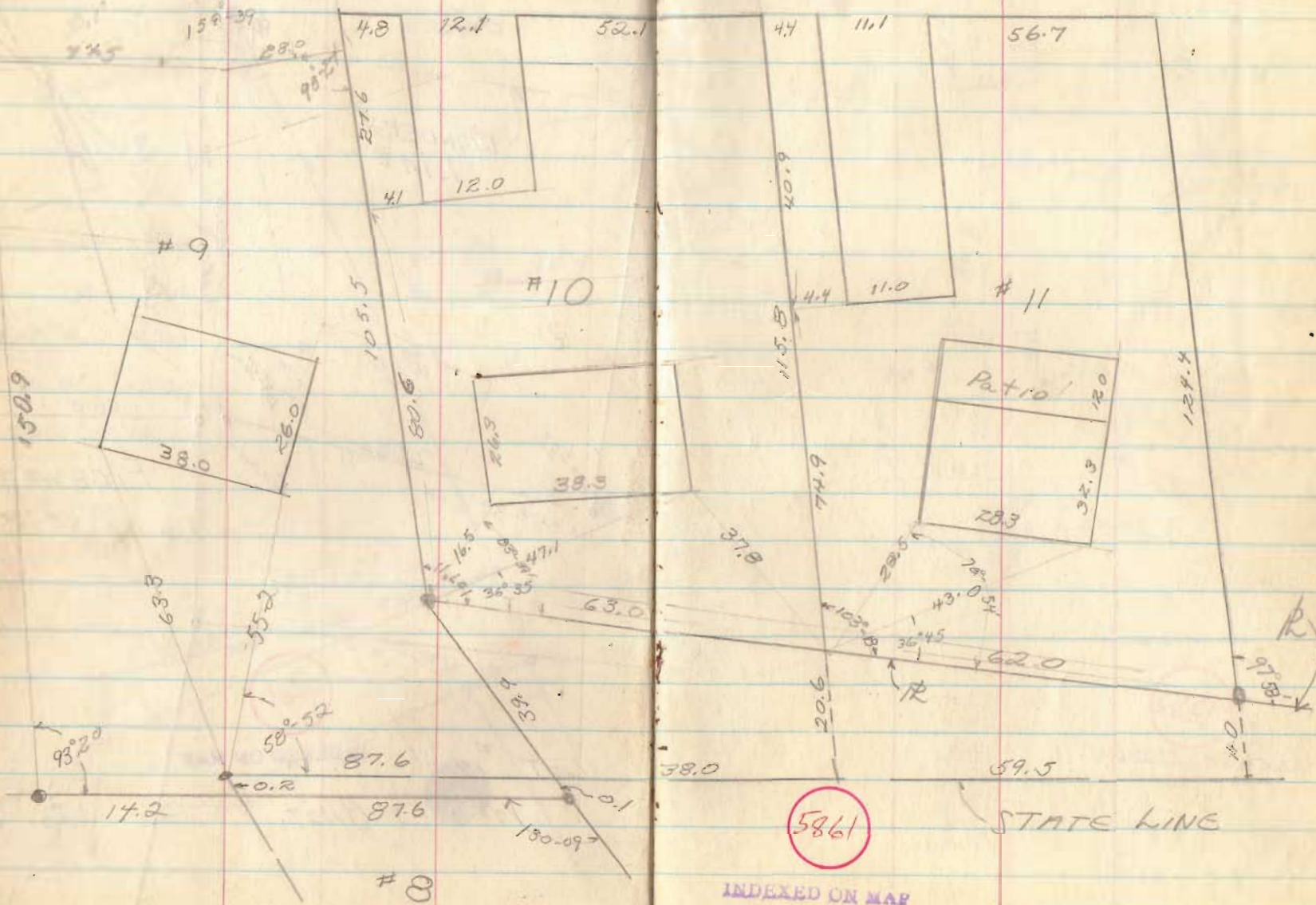
lot # INDEXED ON MAP

Hedges Allot.

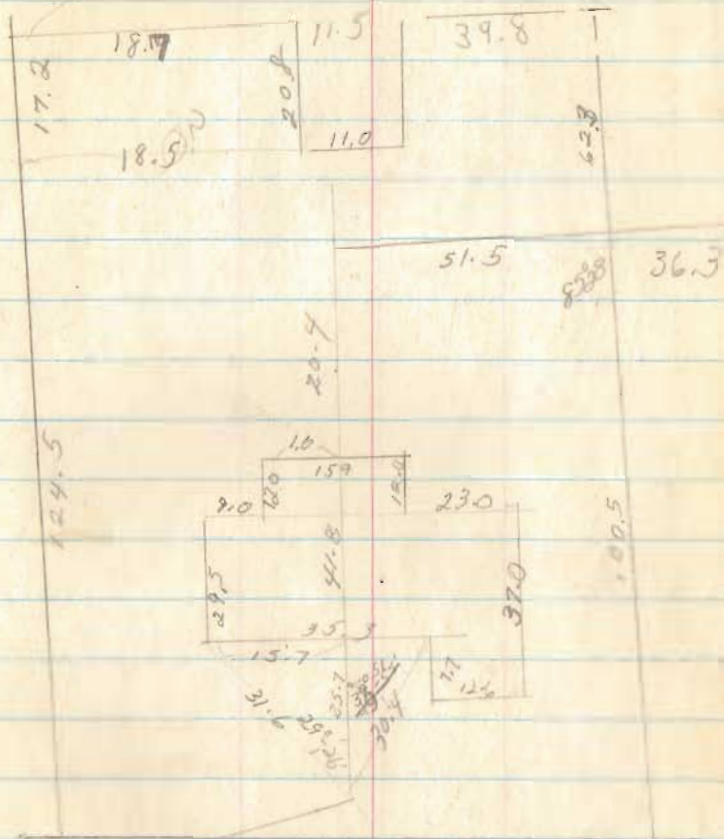
VIRGIL AVE

HEDGES Allot.

27



69.7



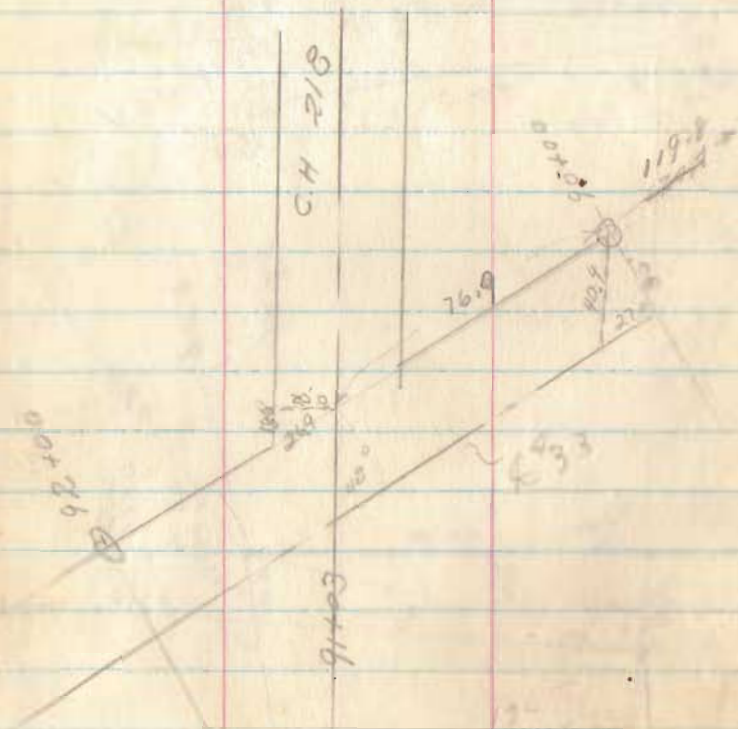
18.4
11.5
39.8
69.7

5661
INDEXED ON MAP
24.5
17.0
41.7

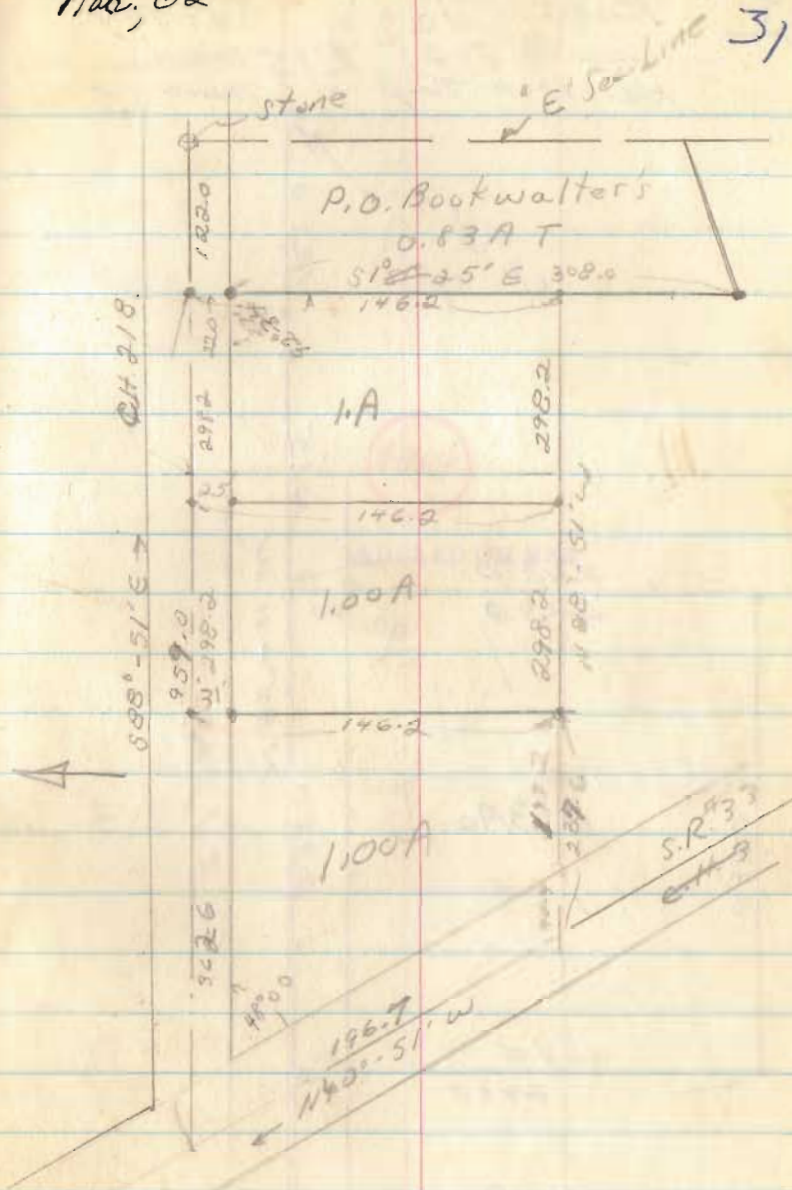
R. W. McDonald
 Sec. 12, T-3, R-14
 Harrison Twp.

2808

INDEXED ON MAP



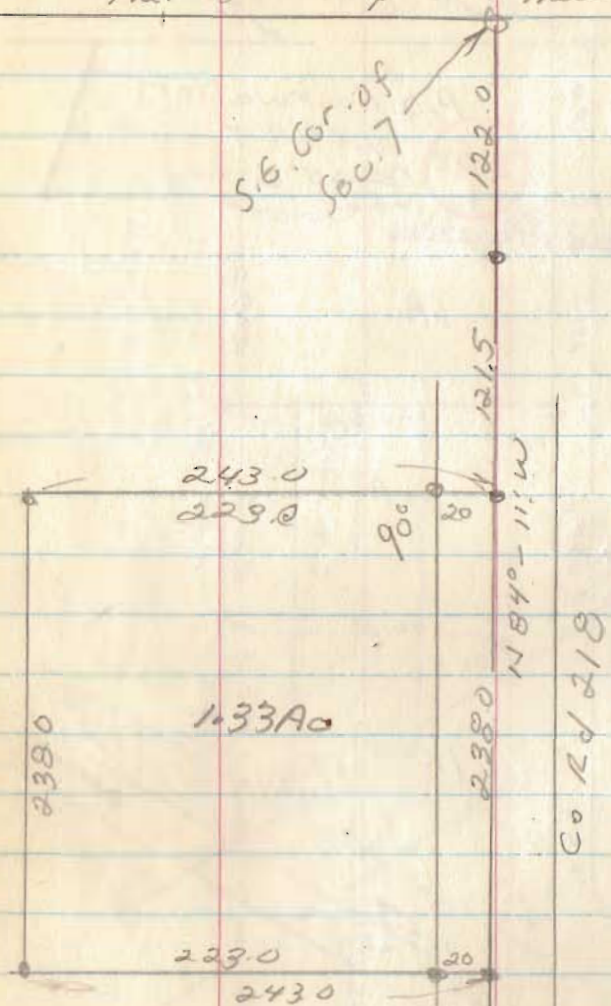
Mar, 62



Robt Clagg Survey
Sec 7, T-2; R-15 between the
Harrison Twp Miami R. Survey

12-21-70

32



4964

INDEXED ON MAP

File

Marquis to Mohr
 V.M.S. 5045
 Lake Twp

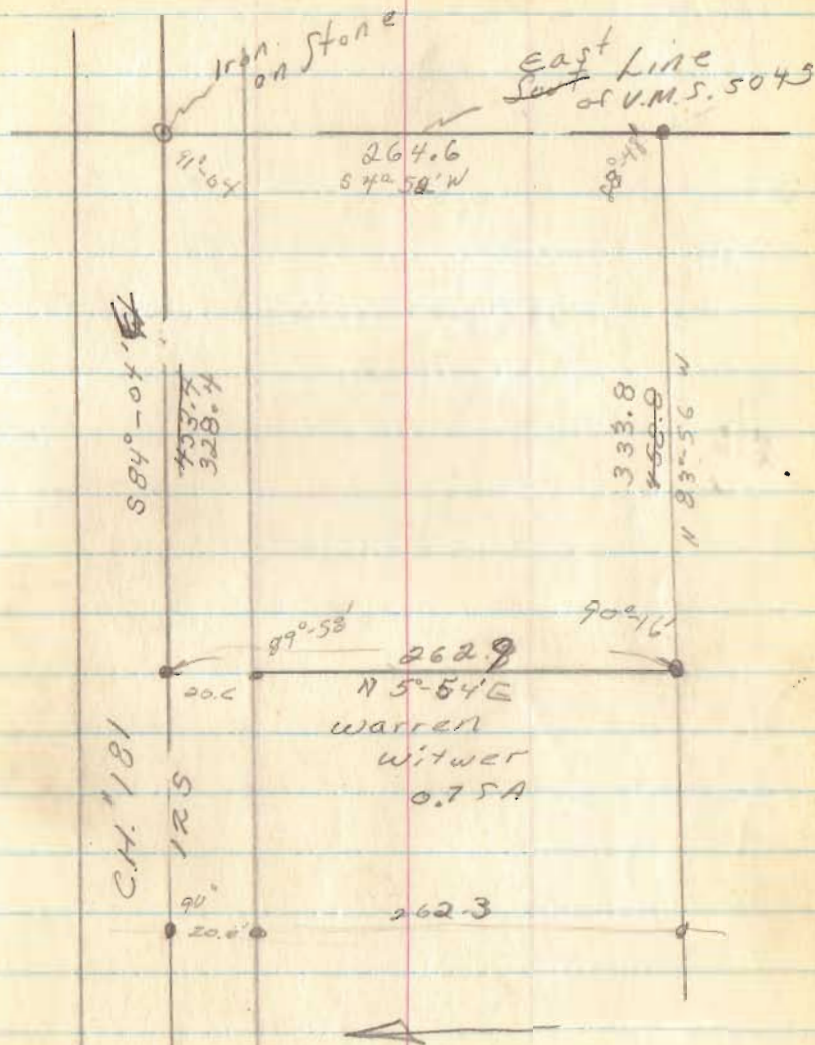
May 26, 62

33

89°-58	
84 04	
5-54	
2-62	
328	
230	
	750
84-04	750
91-04	300
75-08	
4-54	462
70-14	0
7-54	562
76 10	
83 56	

2968

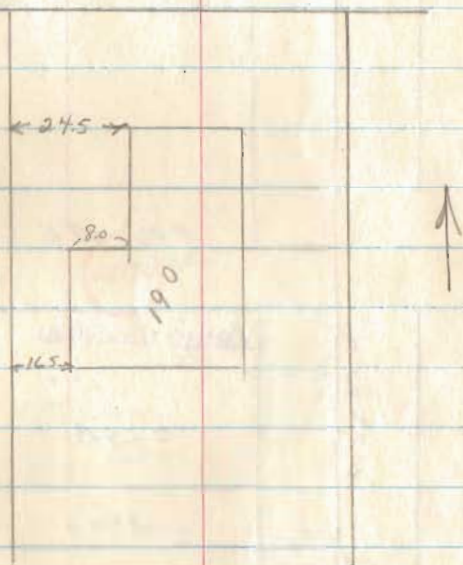
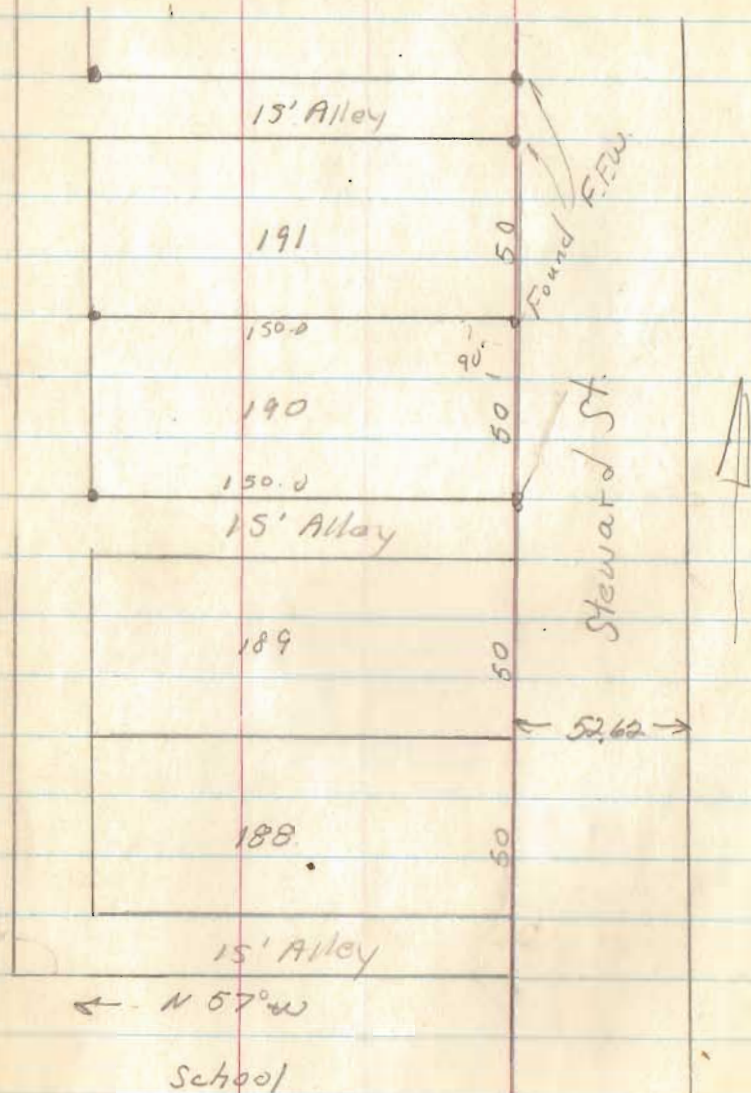
INDEXED ON MAP



Rushsylvania

July, 1962

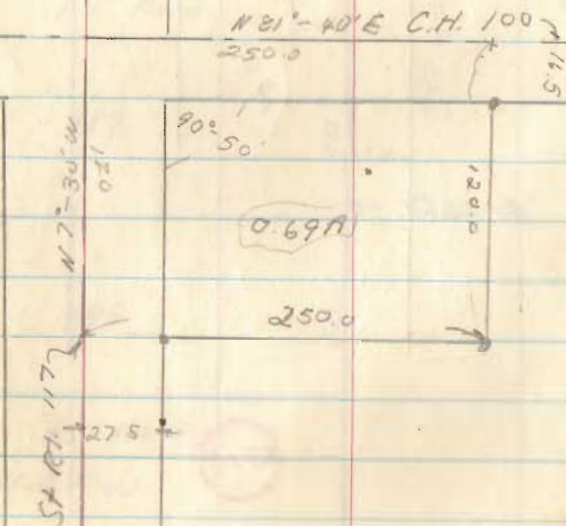
35



6517

INDEXED ON MAP

STATE OF OHIO
LOGAN COUNTY
MCARTHUR TWP.
V. M. S. 9929



3274

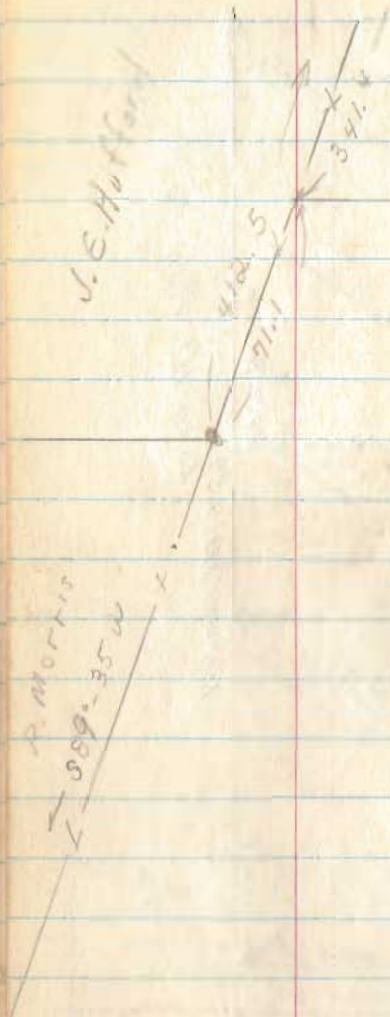
INDEXED ON MAP

36

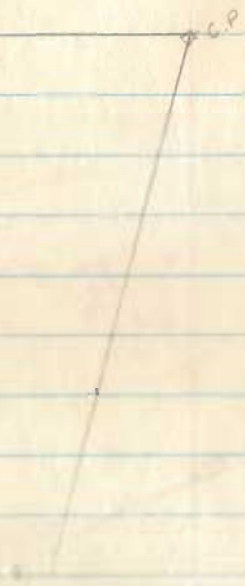
89-10

7 30

81-40

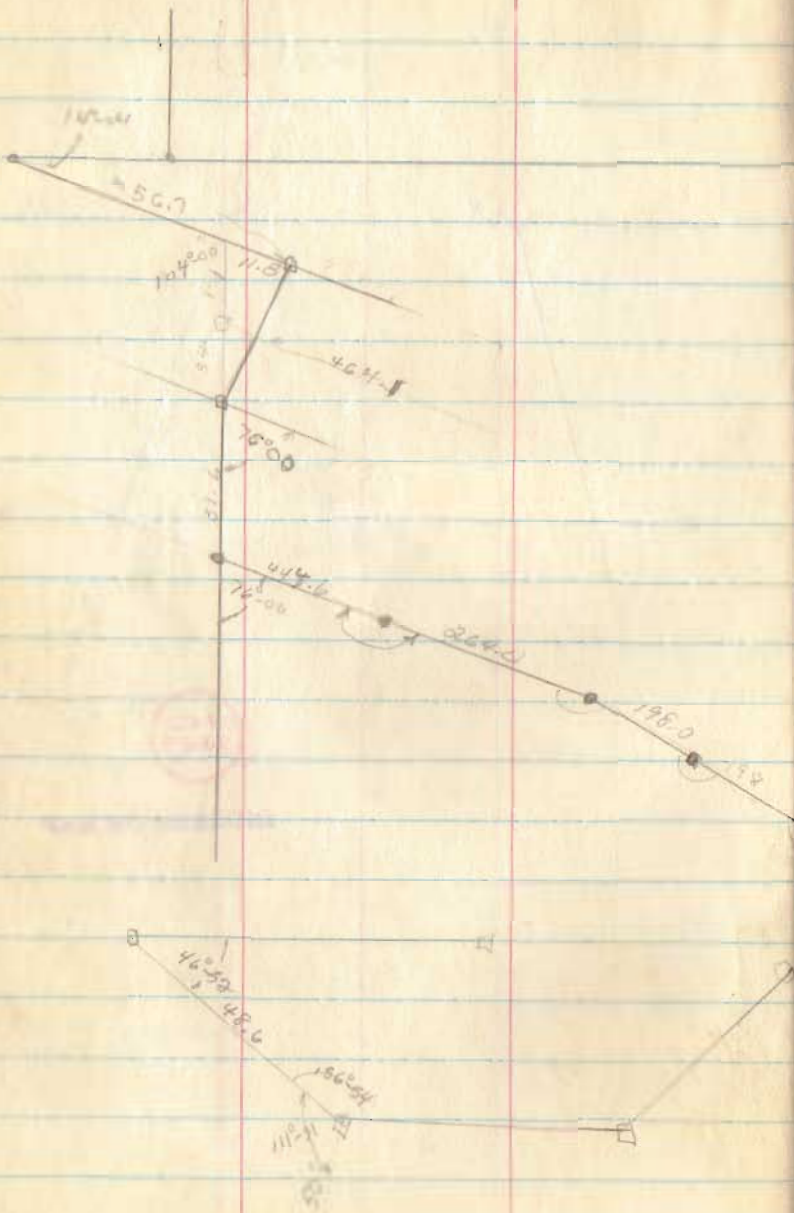


J. E. HOFFMAN



3482
3483

INDEXED ON MAP



See pg. 41
& 42

$51^{\circ}30' \rightarrow$
444.6
1147.5

3482
3483

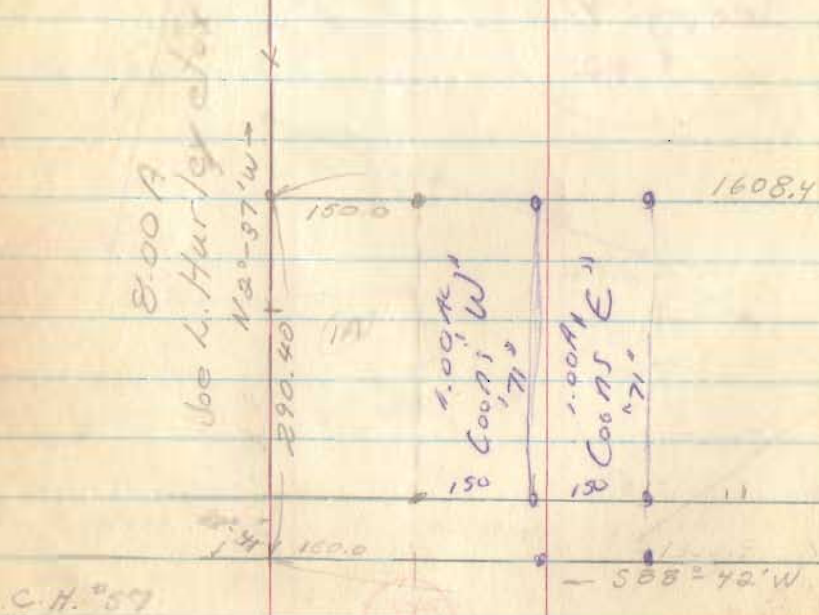
INDEXED ON MAP

98

Hiram S. Doolds et ux
 V.M.S. 9884

McArthur Township

from
 147.98 Acre
 Tract



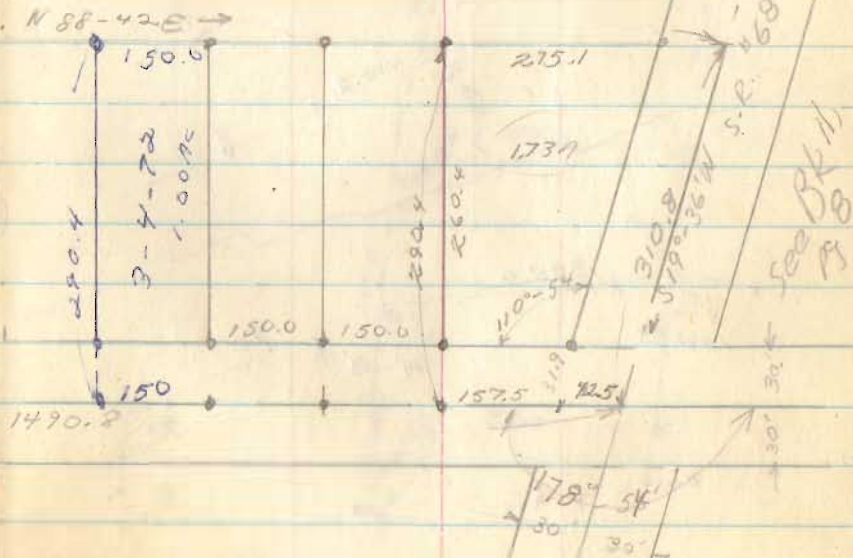
Sept, 62

40

1490.4
 150
 1340.4
 5
 840.4

3435

INDEXED ON MAP



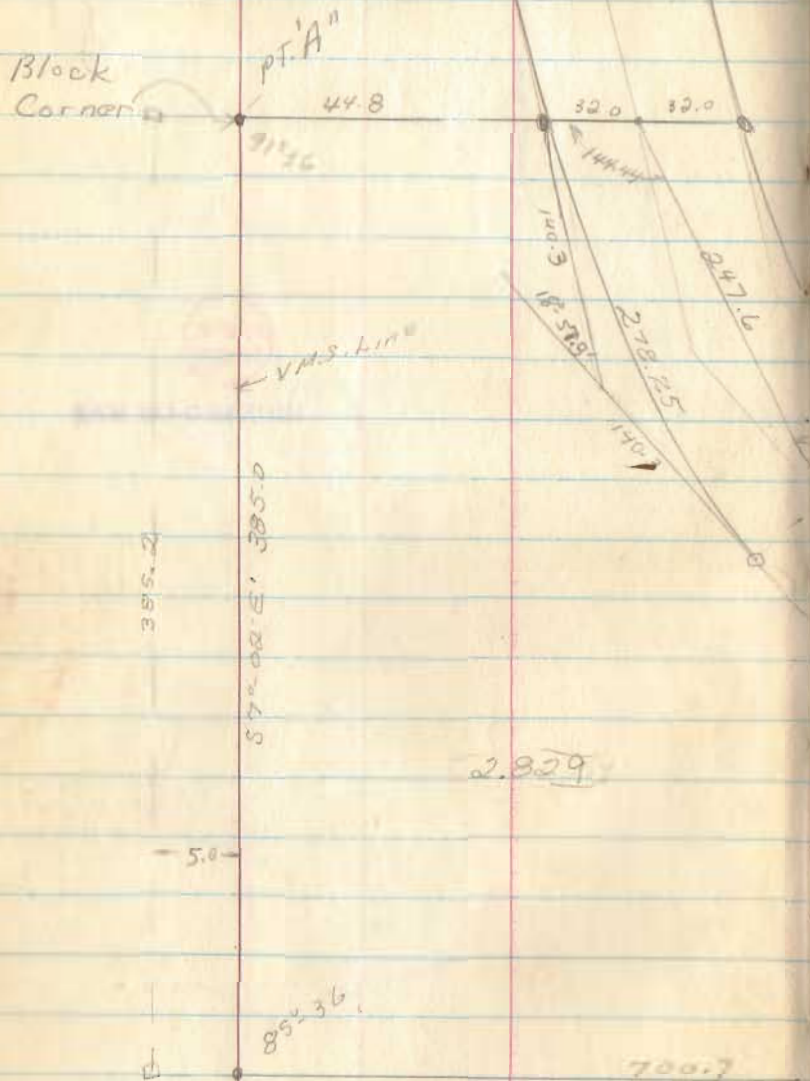
HR

3482
3483

INDEXED ON MAR



Telford to St. of Ohio
Washington Twp



Oct. 63

43

PT. A 127

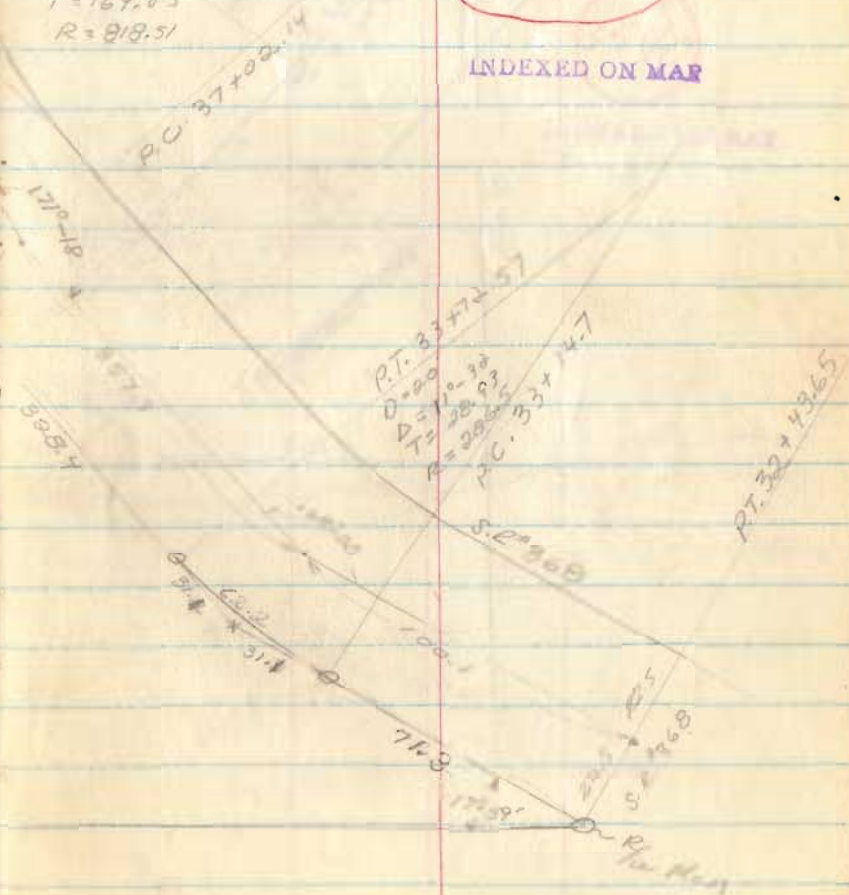
Curve DATA

$D = 7^\circ$
 $\Delta = 23^\circ - 26$
 $T = 169.85$
 $R = 818.51$

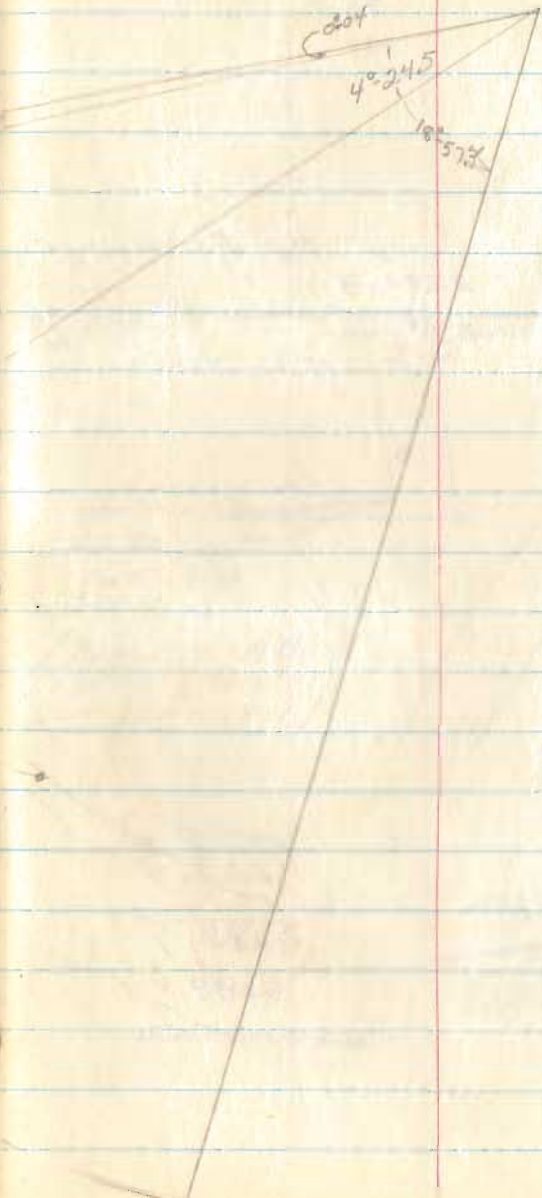
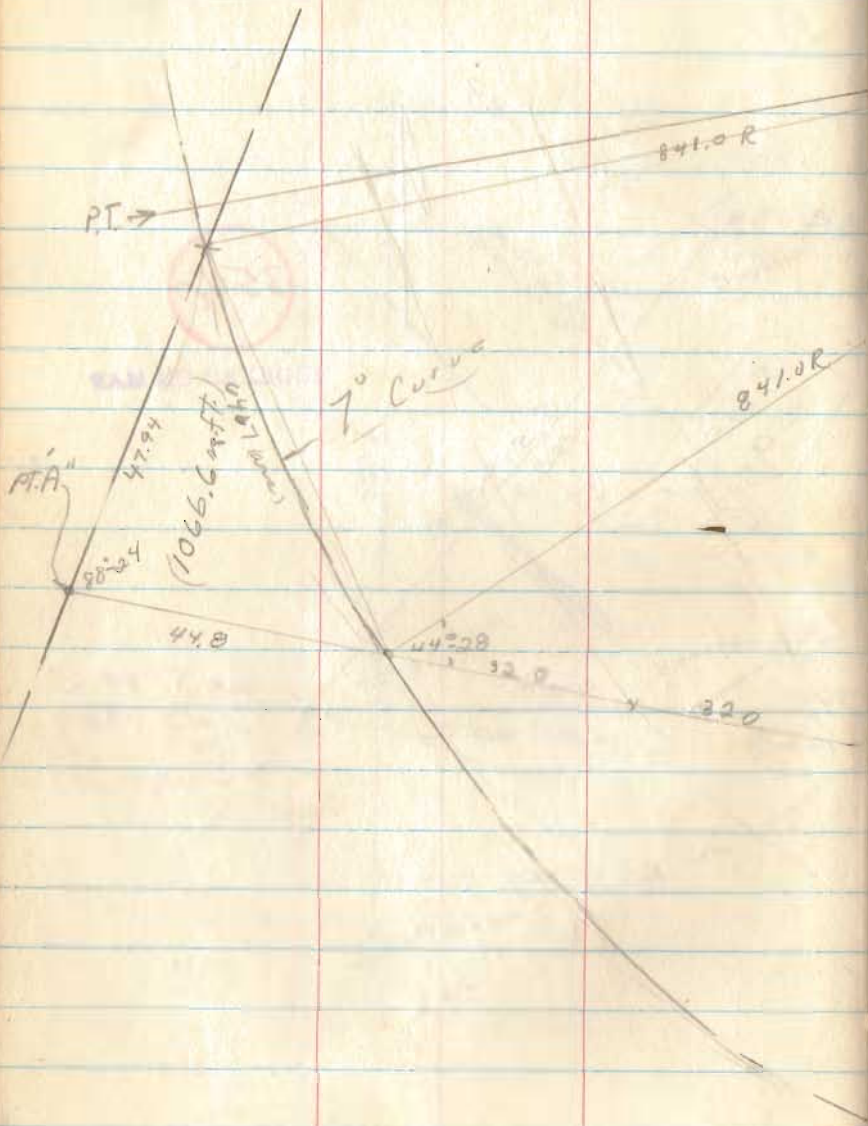
V.M.S. 9966
 V.M.S. 9947

3539

INDEXED ON MAP



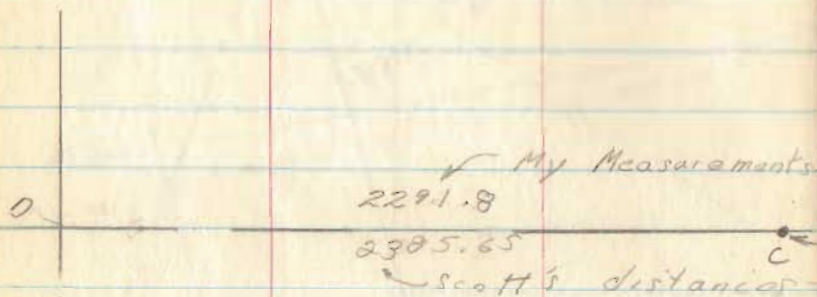
U.M.S. 9968
Washington Twp
by Mound Wood



3540

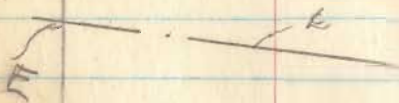
INDEXED ON MAP

92.3
7.3
99.6



688.5

~ E of old
S.R. #33
(now 368)



2292.3
875.4
121.
3288.7
3288.0

875.20
874.11

121.0

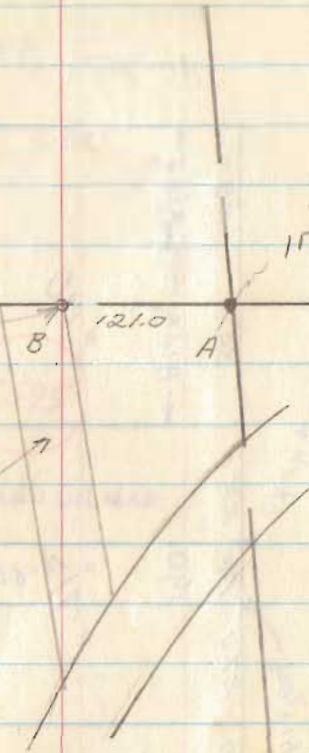
B

A

Iron placed
in 1961

Survey in }
the mid-50s }
by W. Scott }
See Co. file
#2163

(Verified AB
as being 121.0'
in June, 1961)



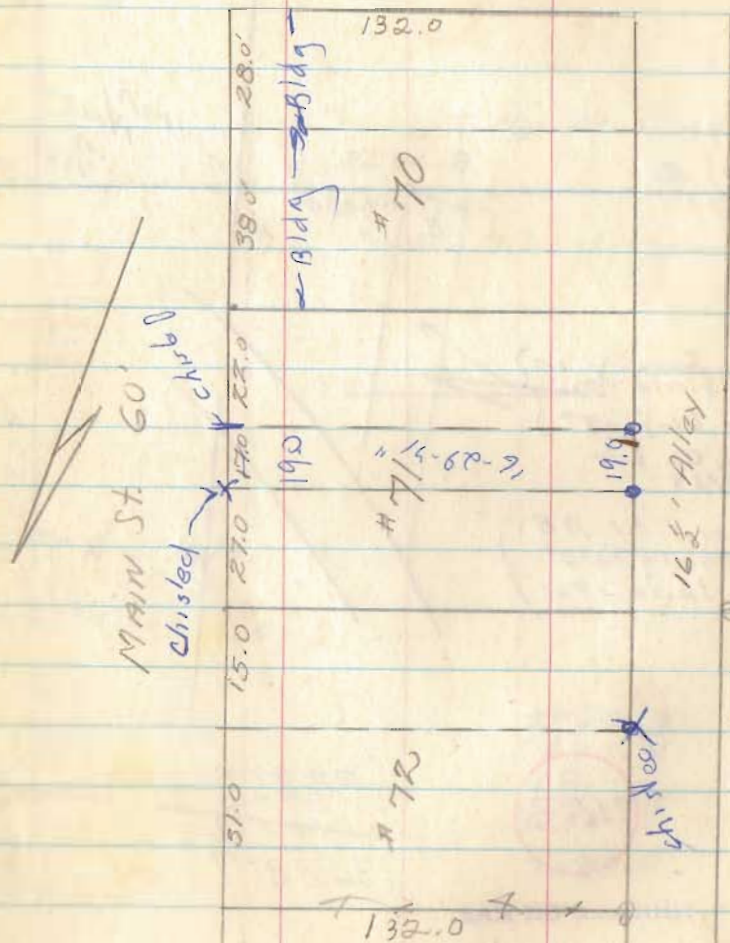
2163

2291.8
875.2
121.0
3288.0

INDEXED ON MAP

William Survey
No Craft

Hayes St. 60'



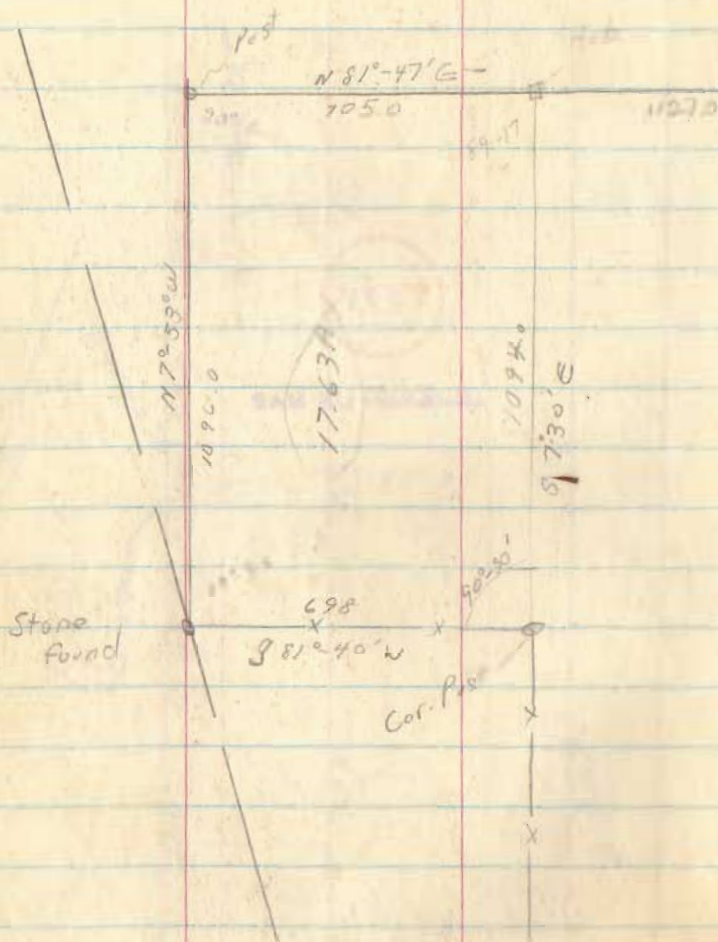
42

47

5595

INDEXED ON MAP

Fry Survey
V.M.S. - 12168
McC Arthur Trp



Dec. 1, 62

48

3537

INDEXED ON MAP

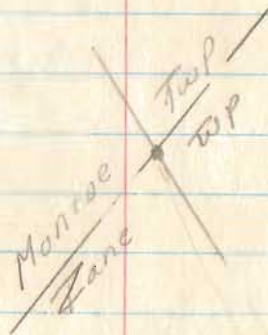
Armentrout to Carey

V.M.S. 4570

Zane Twp.

Mar. 23, 63

49



3542

INDEXED ON MAP



Earnest L. Wirick
1879A



R. Rickets
 Sec. 27, T-5, R-13
 Liberty Twp.

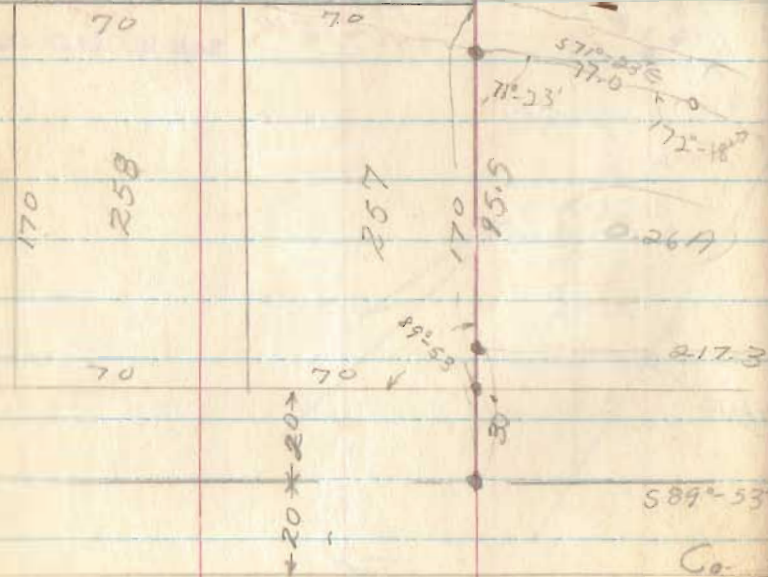
50

Note: Co. Rd. #175 shows 60' in
 the Comm. journal. The lots
 adj. to corp. line show a
 40' st. There is no
 evidence of a survey of
 Co. Rd. #175.

Mac-O-Chee Creek

West Liberty
 East Corp. Line

North



6131

INDEXED ON MAP

Co. Rd. #175

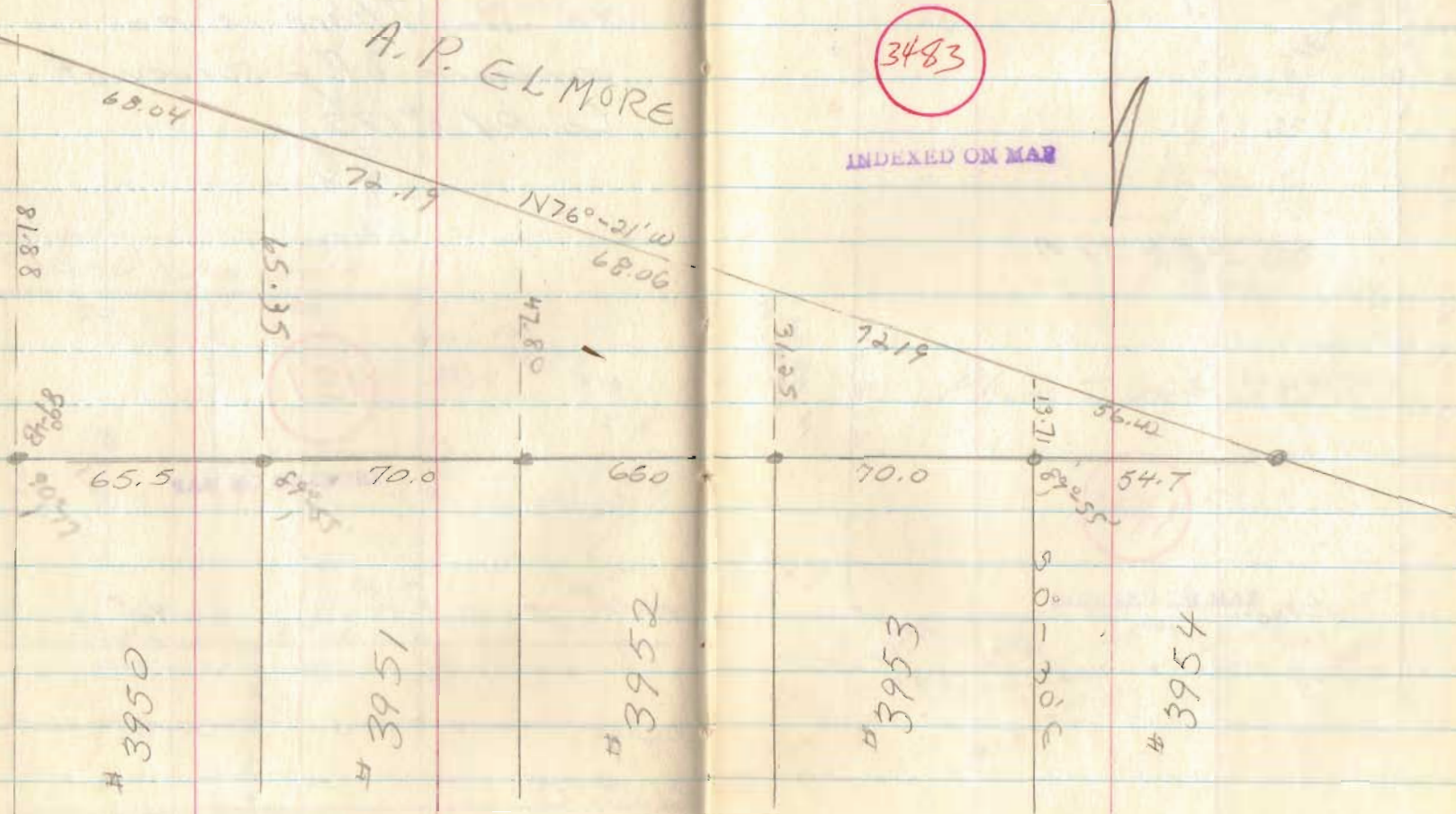
Roy Morris
Sec 27, T-4, R-14
Lake Twp.

51

A. P. ELMORE

3483

INDEXED ON MAP



Aspinall to Losey
 V.M.S. 3160
 Lake Twp

April 63

52



1046 > 50
 315 > 50
 334 > 90

89°-00
 89-31
 121-25
 175-10
 167-51
 77 03

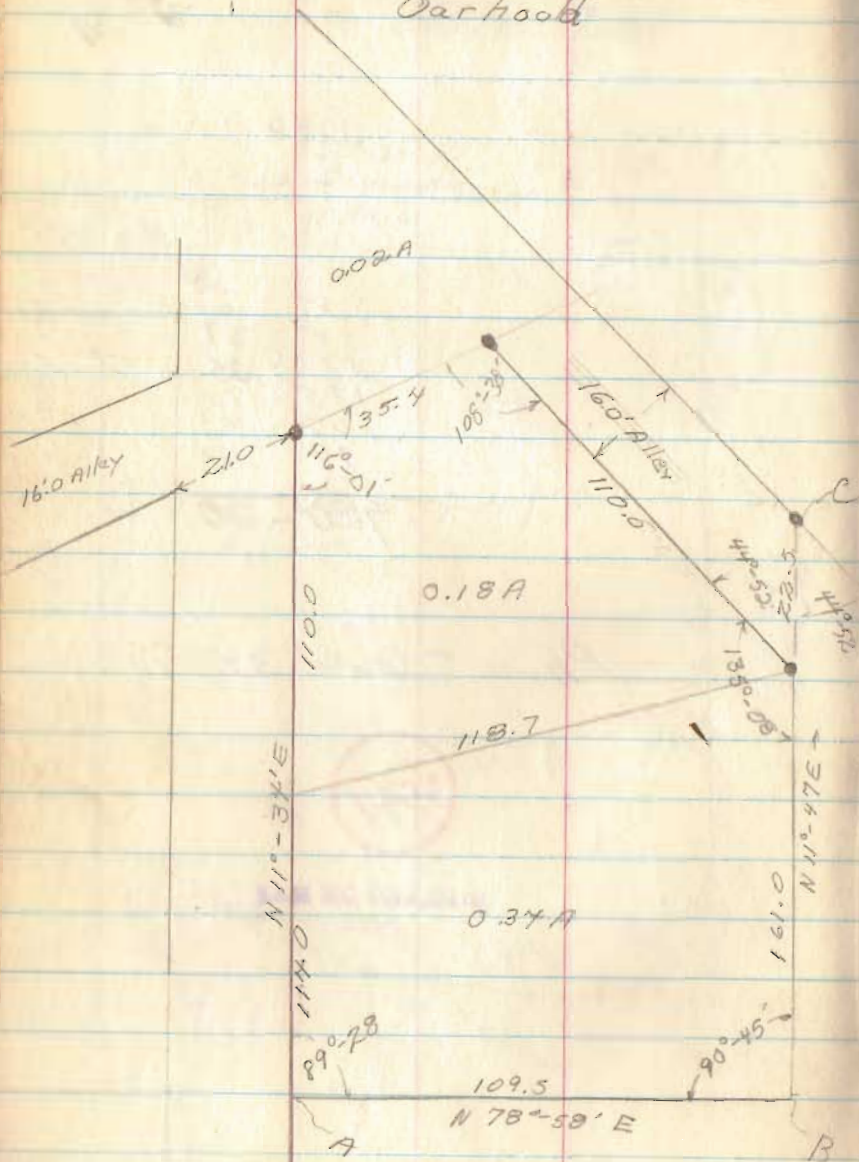
720-00

Phone - 666 3497

3541

INDEXED ON MAR

West Mansfield
 V.M.S. 775 & 6155
 Oakhollow



1963

53

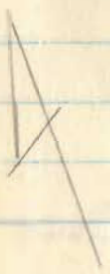
See pg. 54

1892

INDEXED ON MAP

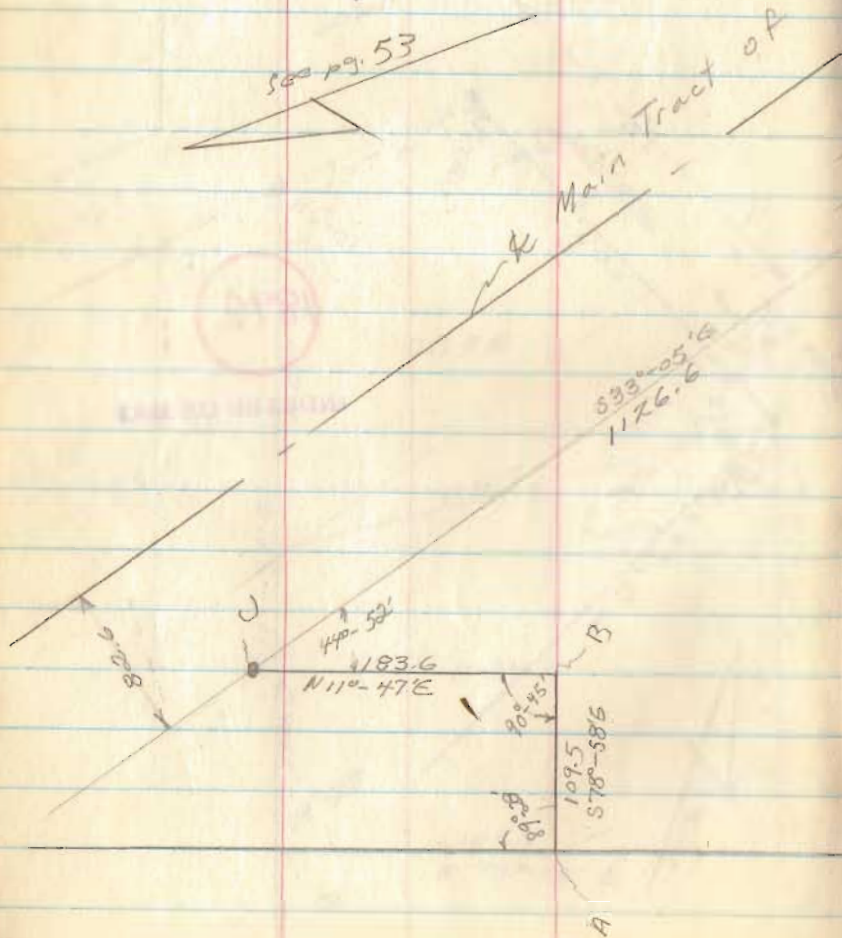
West Line
 of T. & O. C. R.R.
 S 53°-05' E

224°-39'

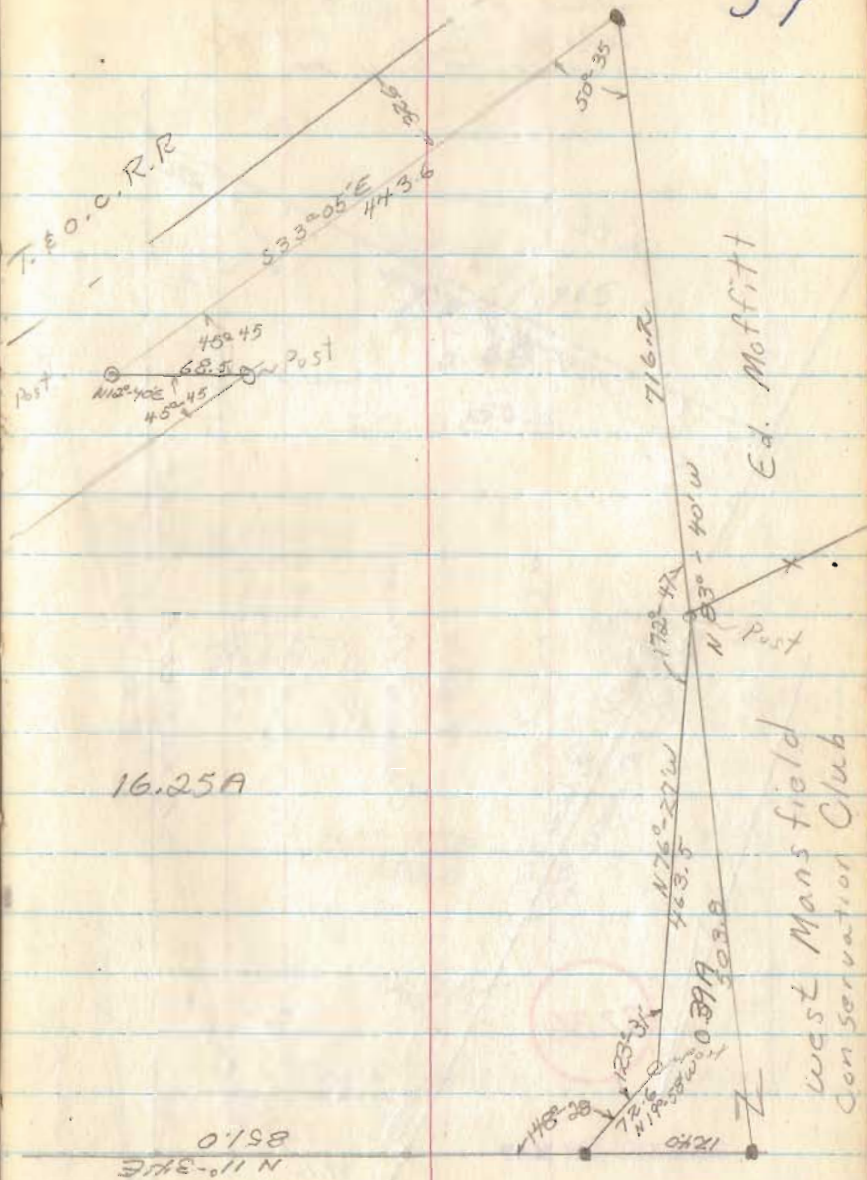


1892

INDEXED ON MAP



T. & O. C. R. R.



54

Frances A. Baird

Sec. 1, T-7; R-8

Wash. Twp.

outside Russell's Pt

Mattox's

N87°-35'W 904.4

78°-56'

64°-57'

27.6

6.5 11 RR

3.88-8.015

140 C.C. RR

14.69A

Copied from Desc.

1313.2

N 23°-28'E 1324.5

& S.R. #708

3236

INDEXED ON MAP

125°-12'

189.3

67.3

80°-15'

65.0

PT.A

55.0

38.5

79.1

R50

38.5

& Warder

Harold's

May, 63

ess. v. Home.
Leina, Ohio

55

Uo/304-468

0.051
Vipall H.
Stokey
April, 1965
8-30-65
0.68

150.0

170.0

657.4
60.0
35.0
34.5
806.9

See pg 56

658.0
508.4

657.4

806.9

657.3

-66°-27'E
182.0

250

0.26A

680

600

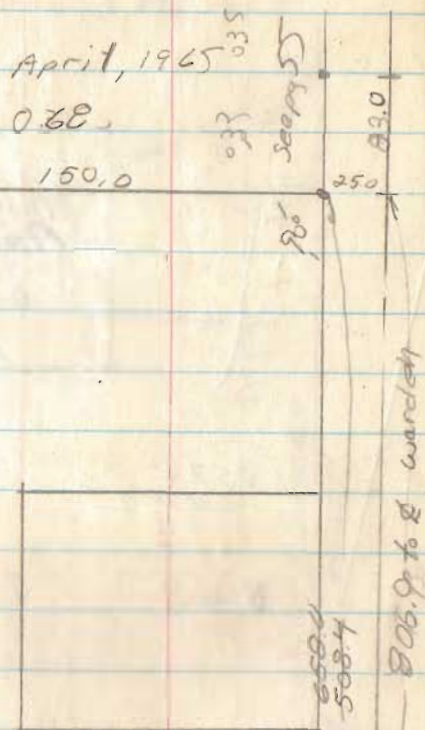
138.8

25.0

PA

70 & Warder

089.9 to 0.35 A
806.9 to 0.33 A



56

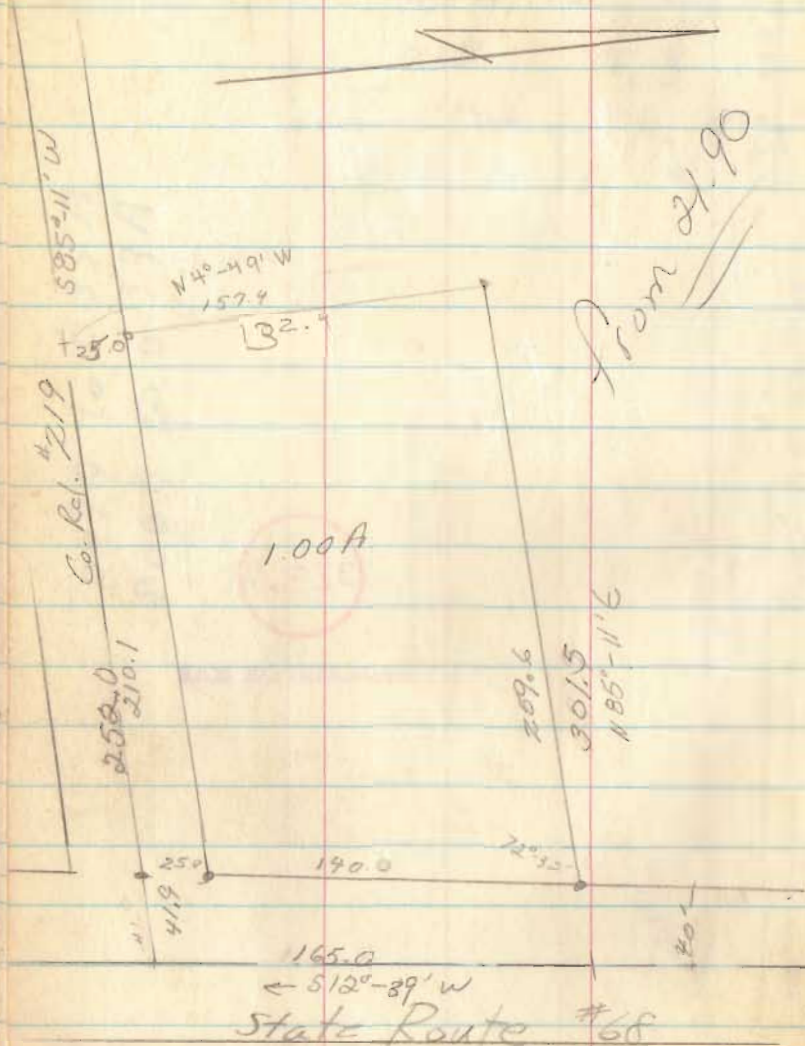
3236

INDEXED ON MAP

Brugler

V.M.S. 3324

LAKE TRIP



May, 63

57



3559

INDEXED ON MAP

07	41.9
	17.5
	4.1
67	23.2
	41.9
71	136.1

30

17	20
72	10

107

107

107

4

17

72

107

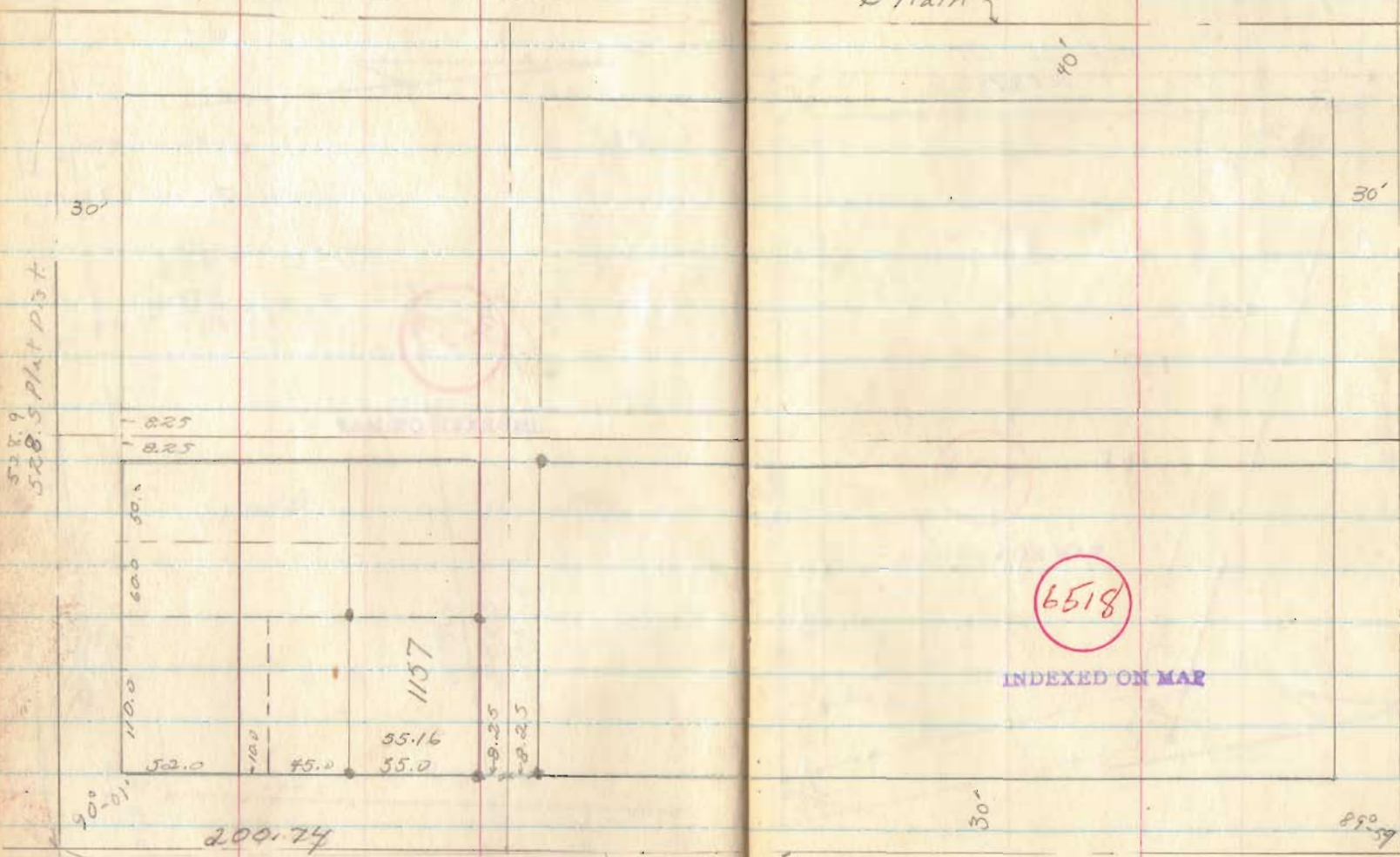
Lederick

Palmer Add.

1963
July

to Main

58



528.9
528.5 Plat Dist

529.0
529.5 Plat Dist

6518

INDEXED ON MAP

to Main
6400
641.6
plat Dist

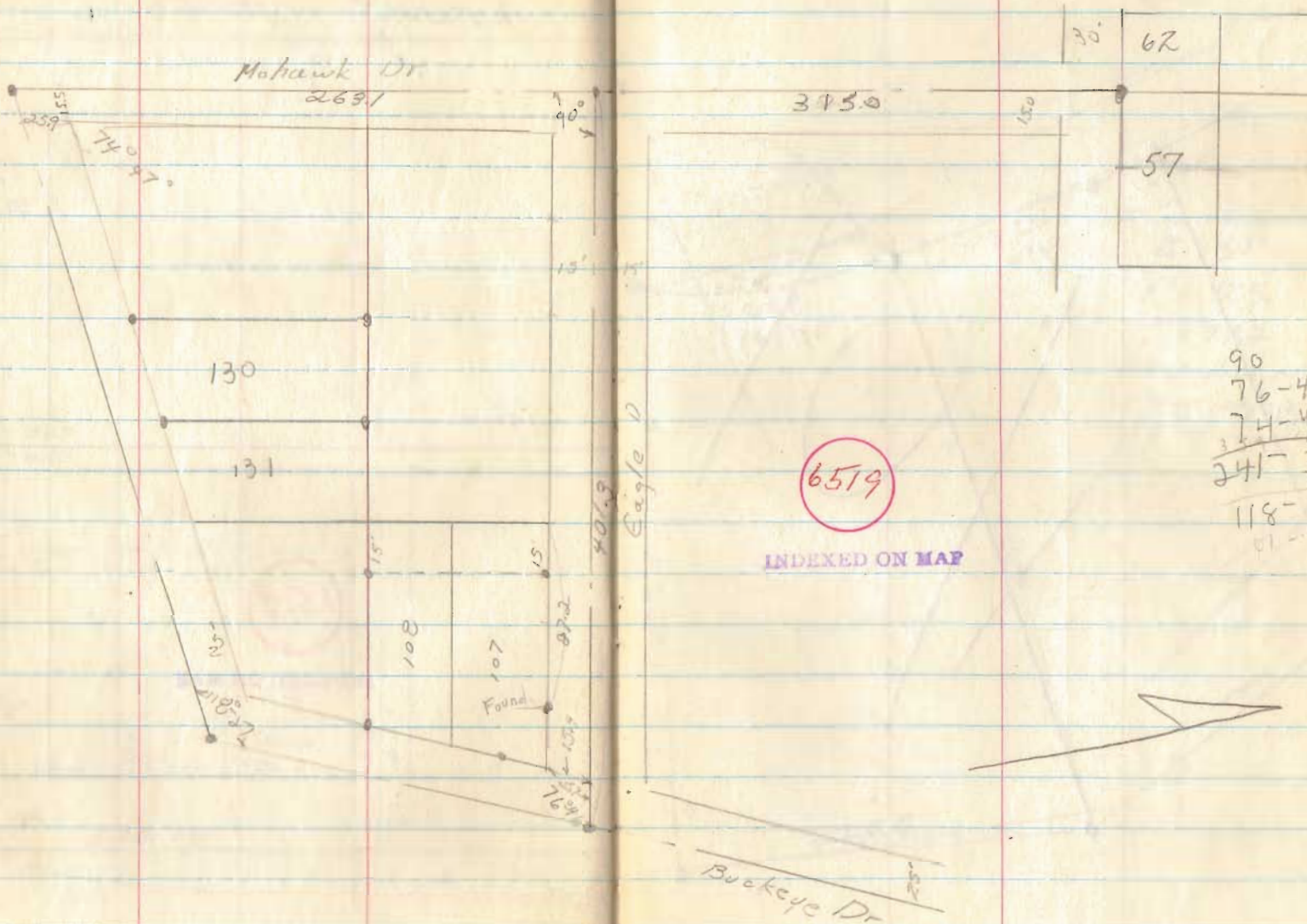
202.95

.0030 long per ft

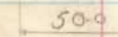
Seminole
Subd. "A"

July 6 63

59



Paul Hassell Jr.
 Survey
 Bellefontaine, O



Hardin
 Plat Dist 290.17'

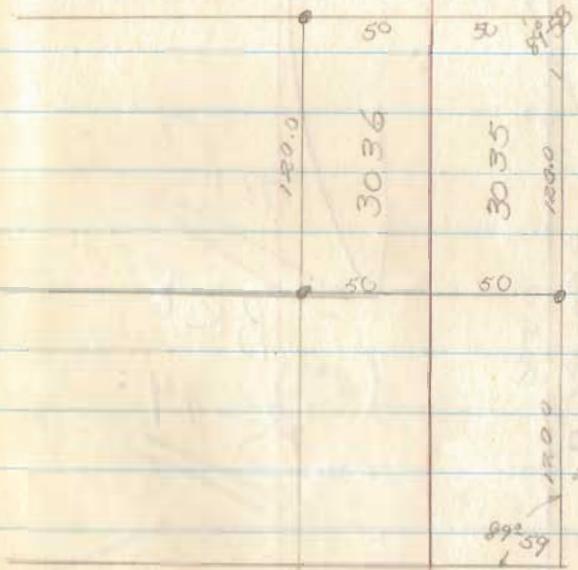
Belmont
 Plat Dist

589.05

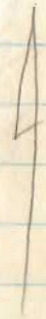
Plat Dist 600.87
 Washington 50'

6520

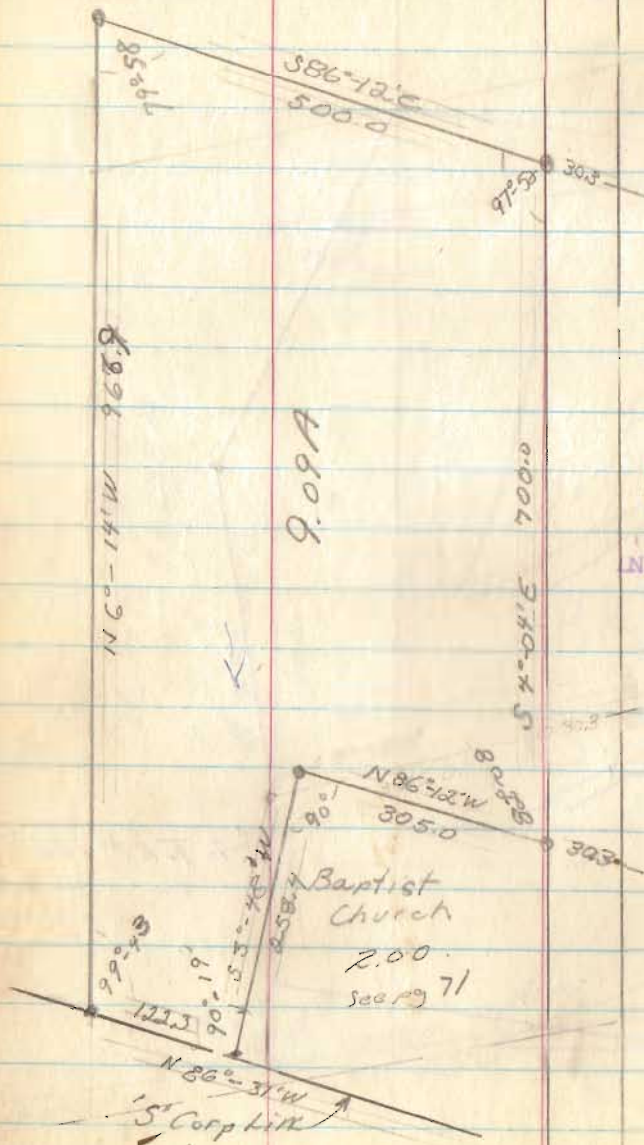
INDEXED ON MAP



Plat Dist 290
 Hurter 50'



Henry to Graham
 Sect. 33; T-4, R-14
 Lake Twp.

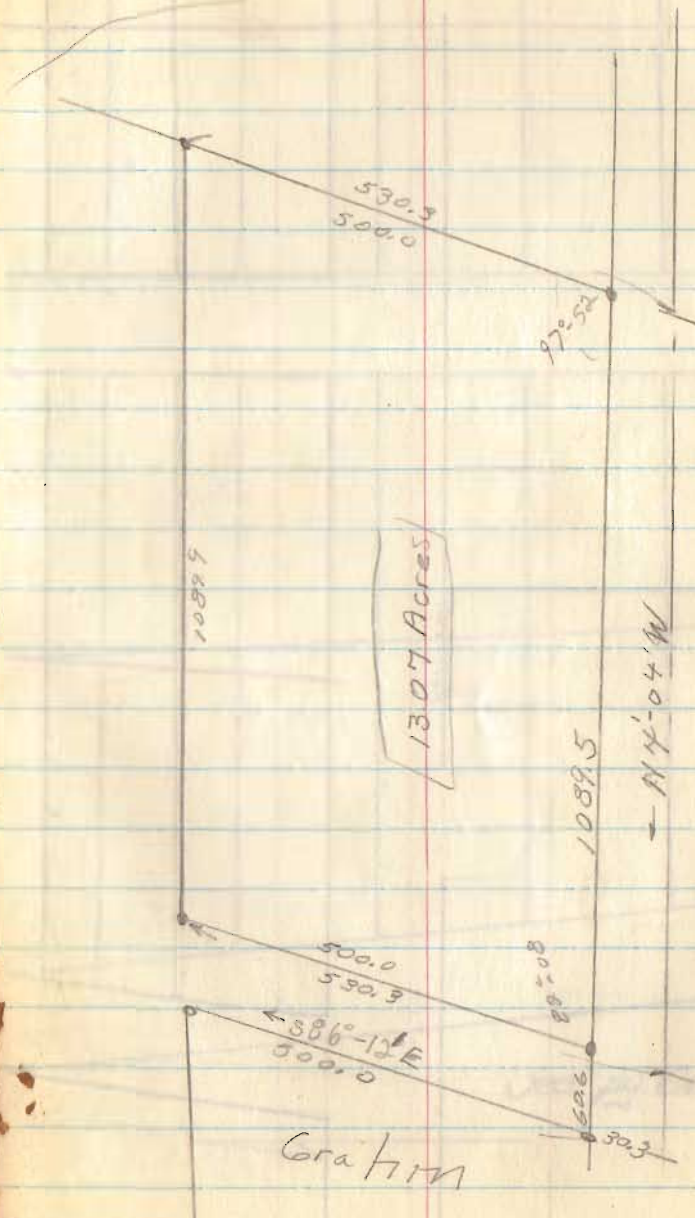


3741
 3691

INDEXED ON MAP

July 28, 64

63



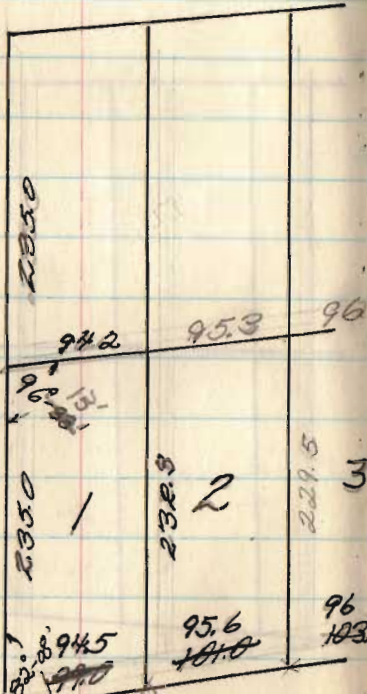
Graham

60.6
 94.5
 95.6
 96.7
 97.9
 99.1
 100.4
 644.8

P.C. 285+43.5

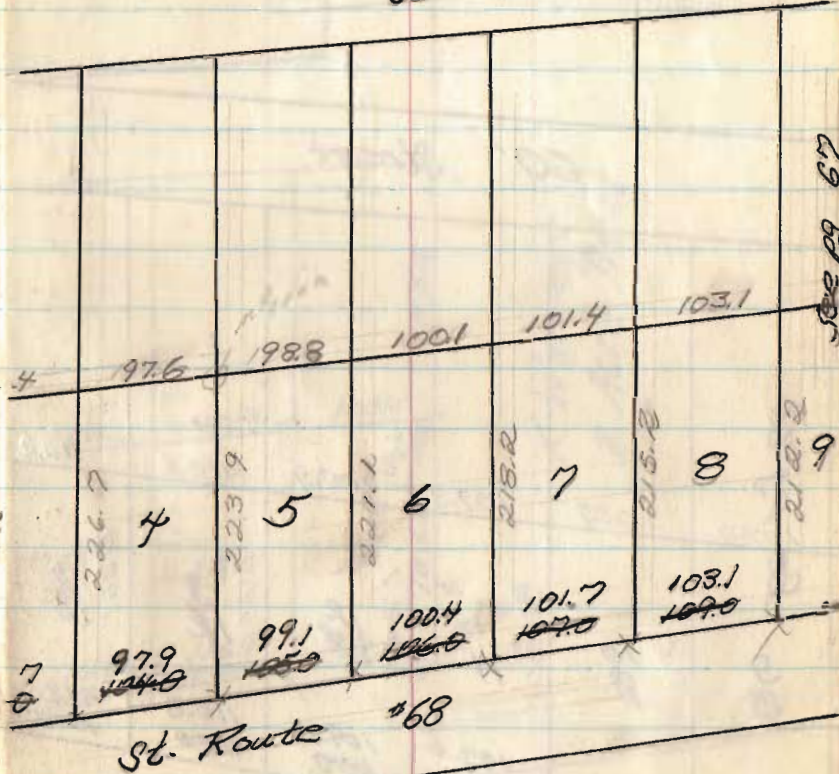
Mon.

60.6



See pg 64

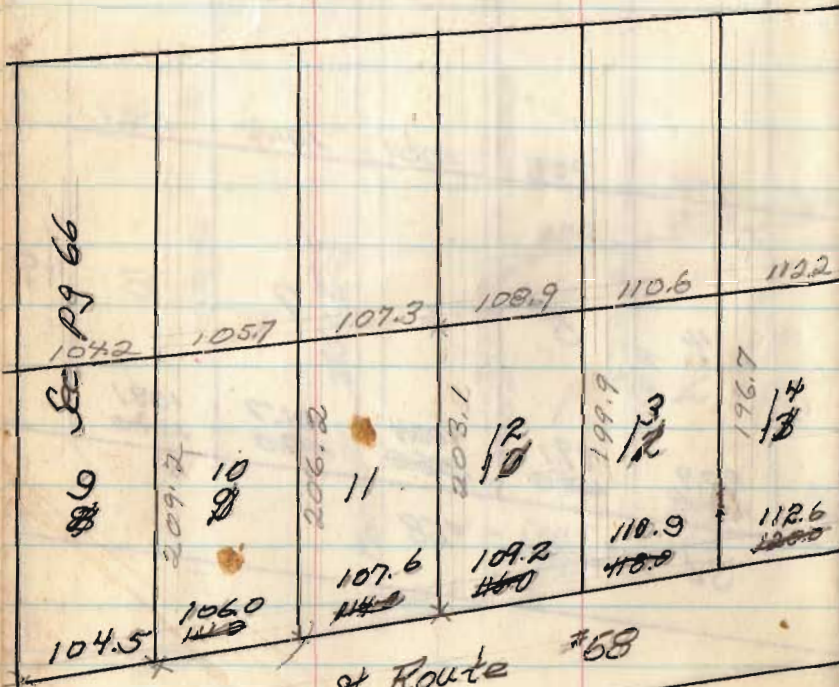
60' St.



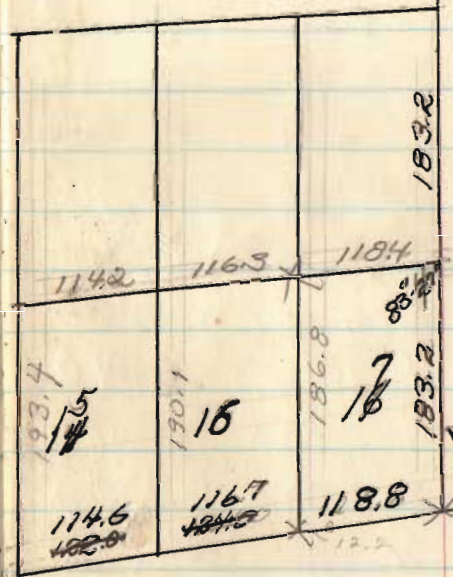
See pg 67

See pg. 65

60' Street



St. Route #68



K. Warners' 3 Acre Tract

18
 6
 + 6
 12

11 83.5 7435

854534 ^{ft} ^{needed}
~~2563~~
 256.2



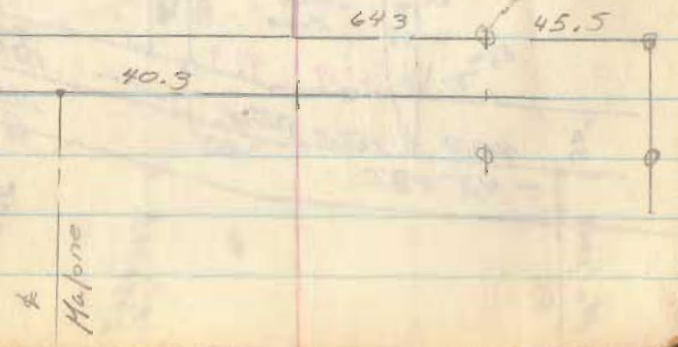
Wright St. 50

Corp Line 1250

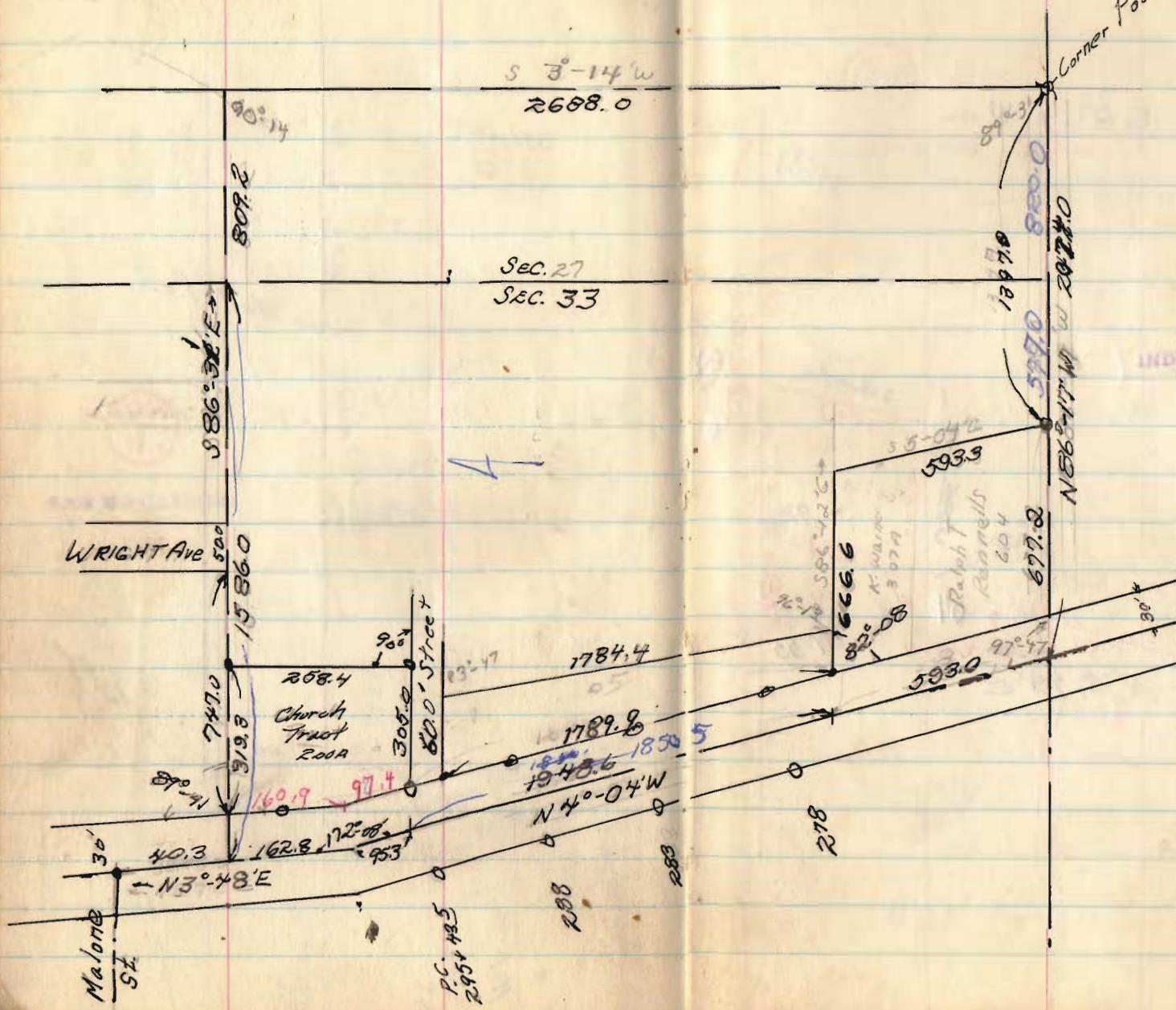
Steel Post

2691
 3741
 4199

INDEXED ON MAP

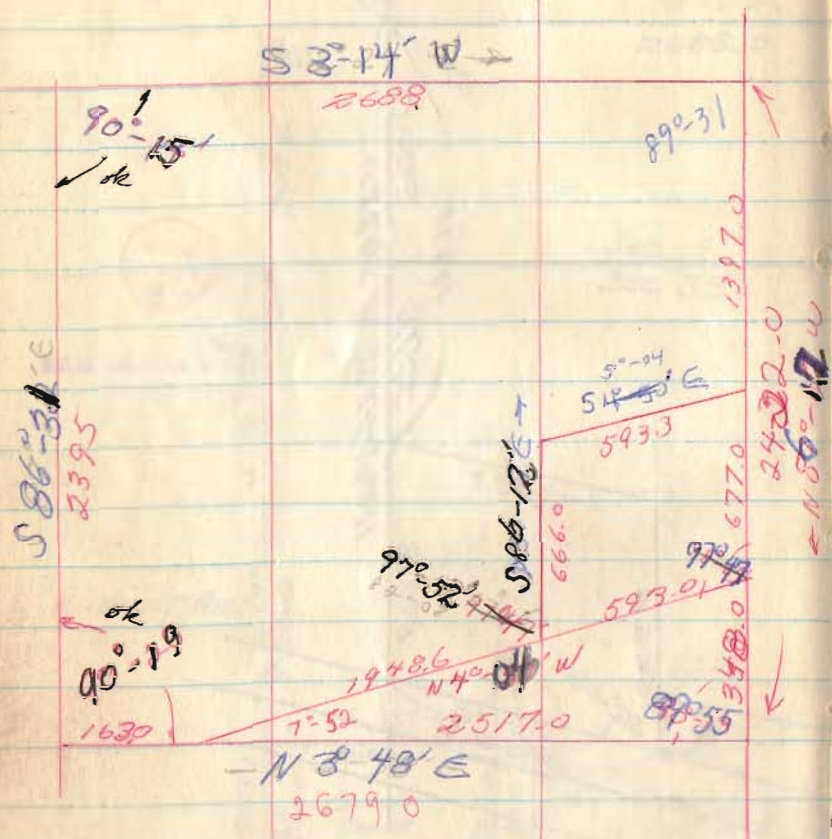


April & June, '62



3691
3741
4199

IMAGED ON MAP



736
404
348
N 3°48' E

S 9°-49'