

Adolph Meyer
V.M.S. 3322
Rushcreek & Jefferson Twp.

July 8, 65

2

Co. Rd. 49

256.24

32.3

275.9

243.6

N 35° - 38' E

170.0

1.A

21° 45'

170.0

53.0

14' R/W easement

N 32° - 37' W

Co. Res. Post

99700

See

Co. Eng. F.B. P. 578.19 16

3809

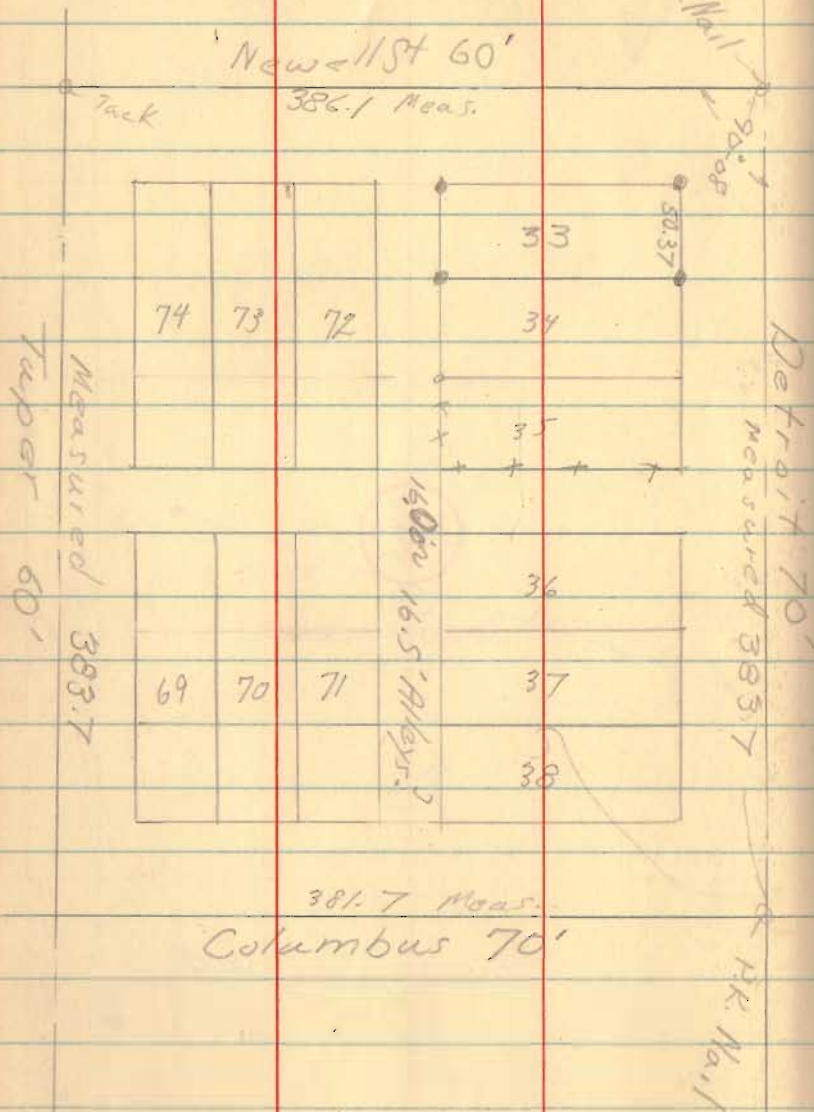
INDEXED ON MAP

Lot # 33

West Liberty

Aug. 21, 1965

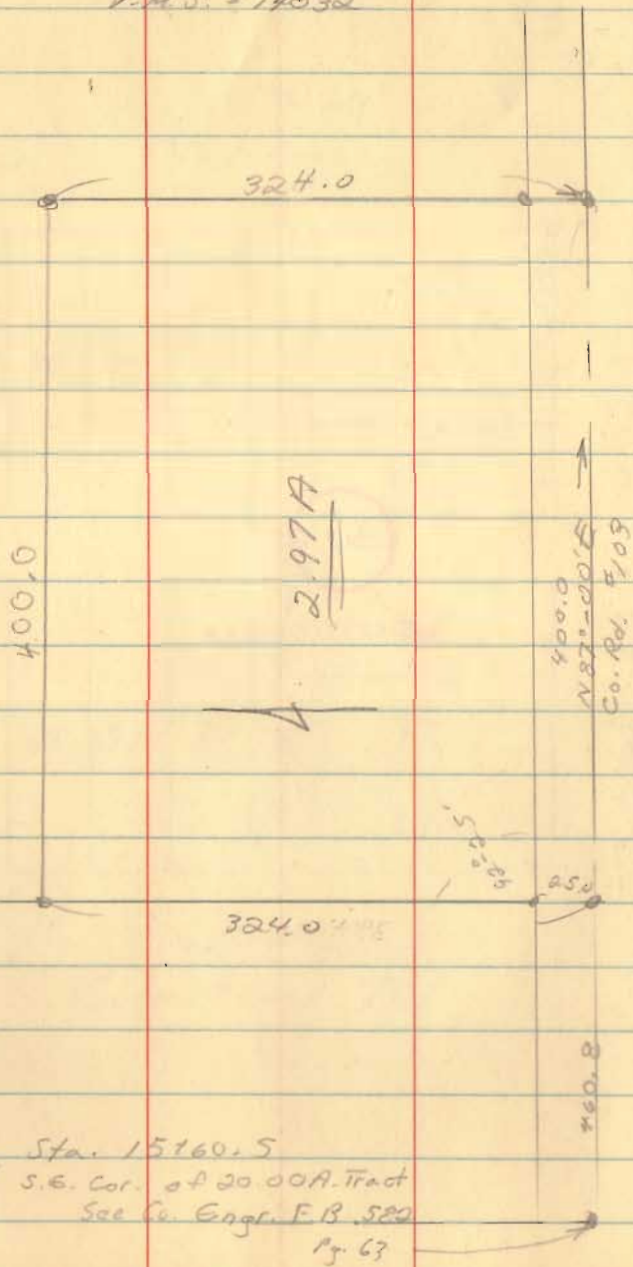
3



6528

INDEXED ON MAP

Noble Survey
Richland Twp
V.M.S. = 14032



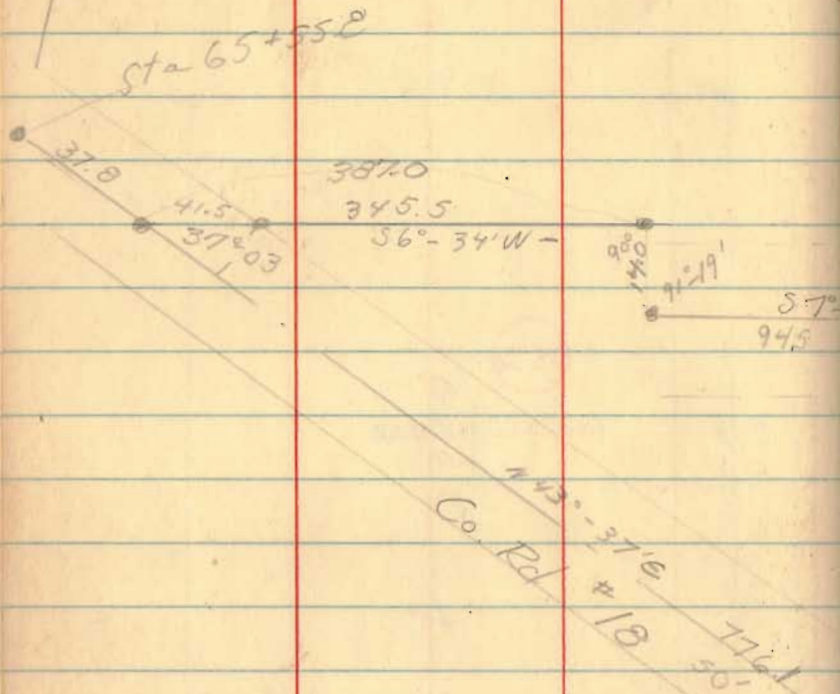
Aug. 11, 1965

4

38.30

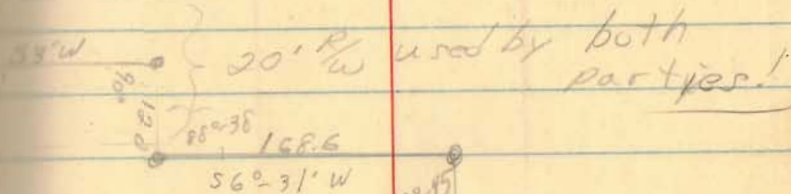
INDEXED ON MAP

May Survey
 Sec 2-T-3 R-14
 Liberty Twp.

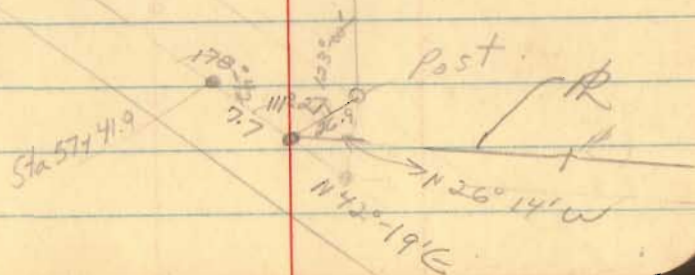


3945

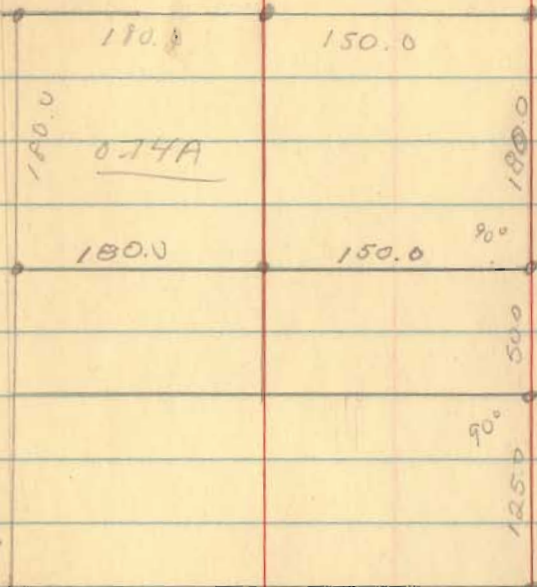
INDEXED ON MAP



3.50 A



Roy Marris



Hofford
2.81A

296.5
 S 89° 48' W
 Sec 96 NW
 2343

Sept., 65

7

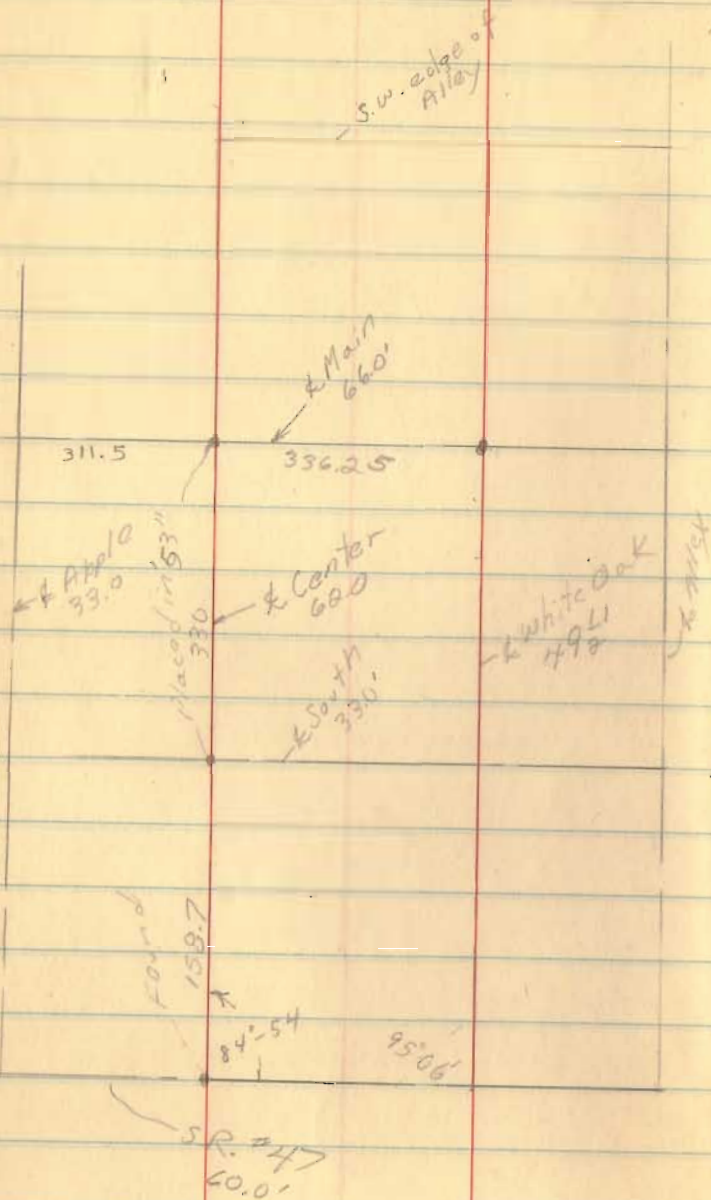
3540

INDEXED ON MAP

NE Lake

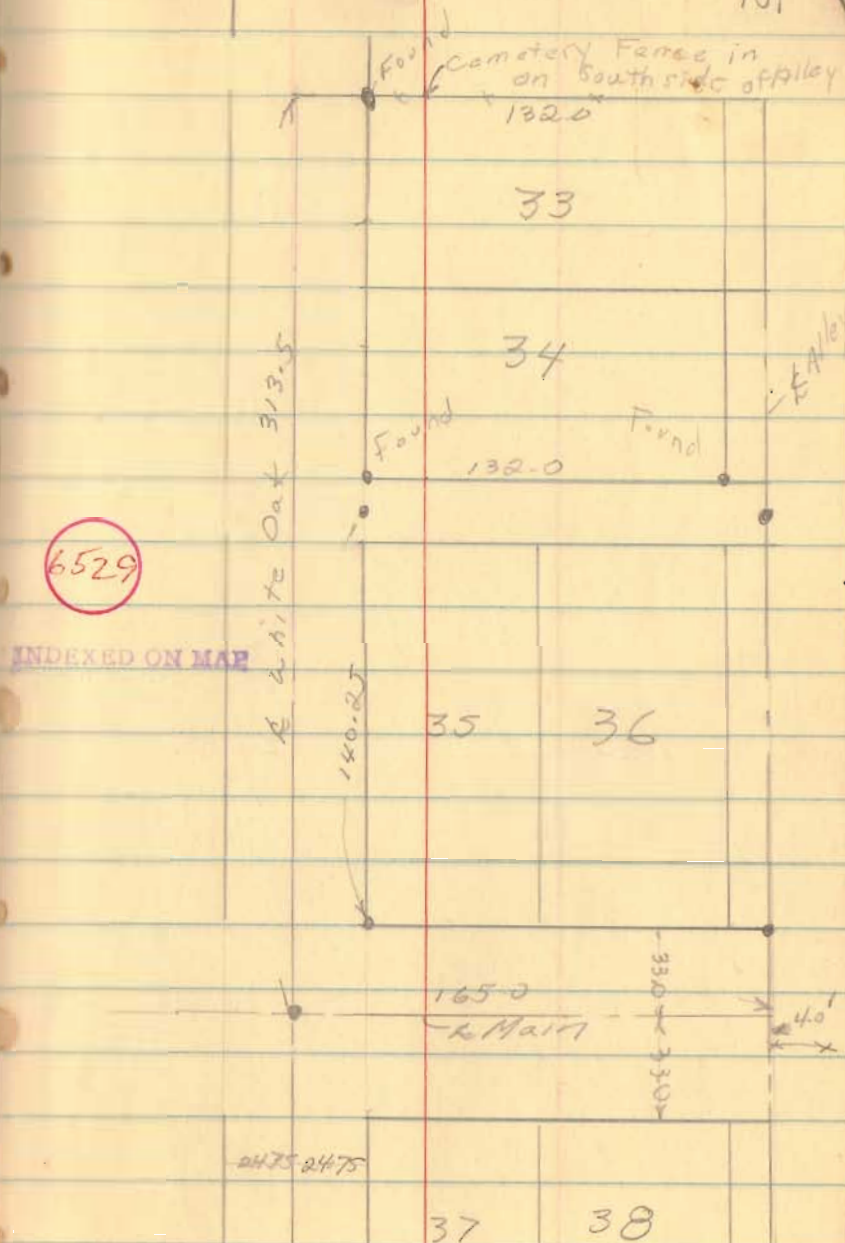
200' low 1650.0
 S 19° - 30' E

Kogansville

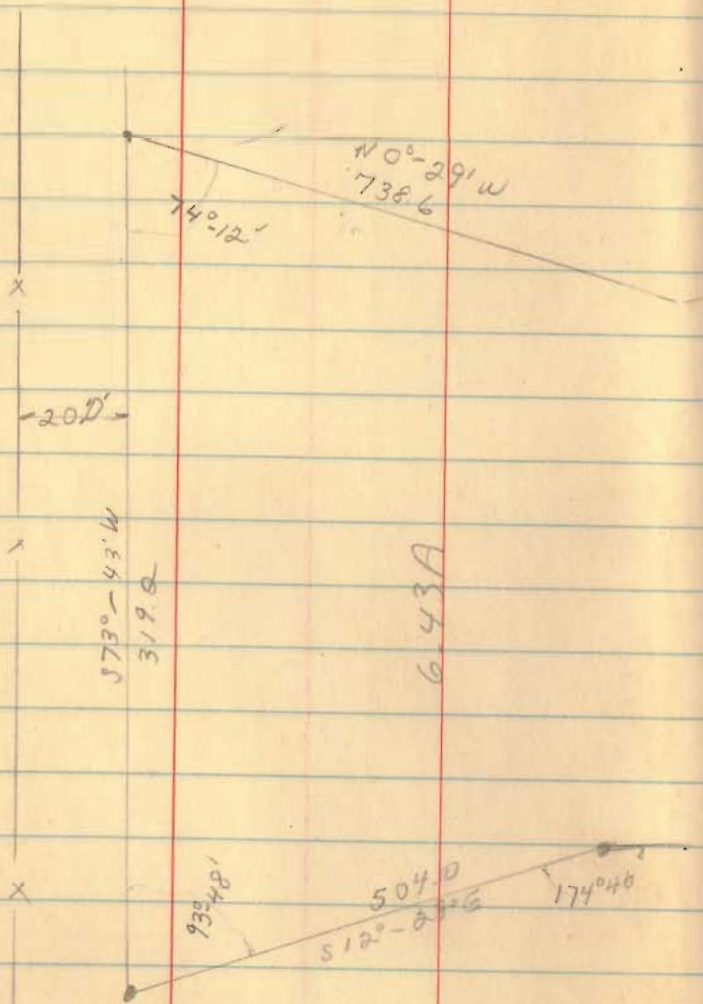


Oct. 1965

101

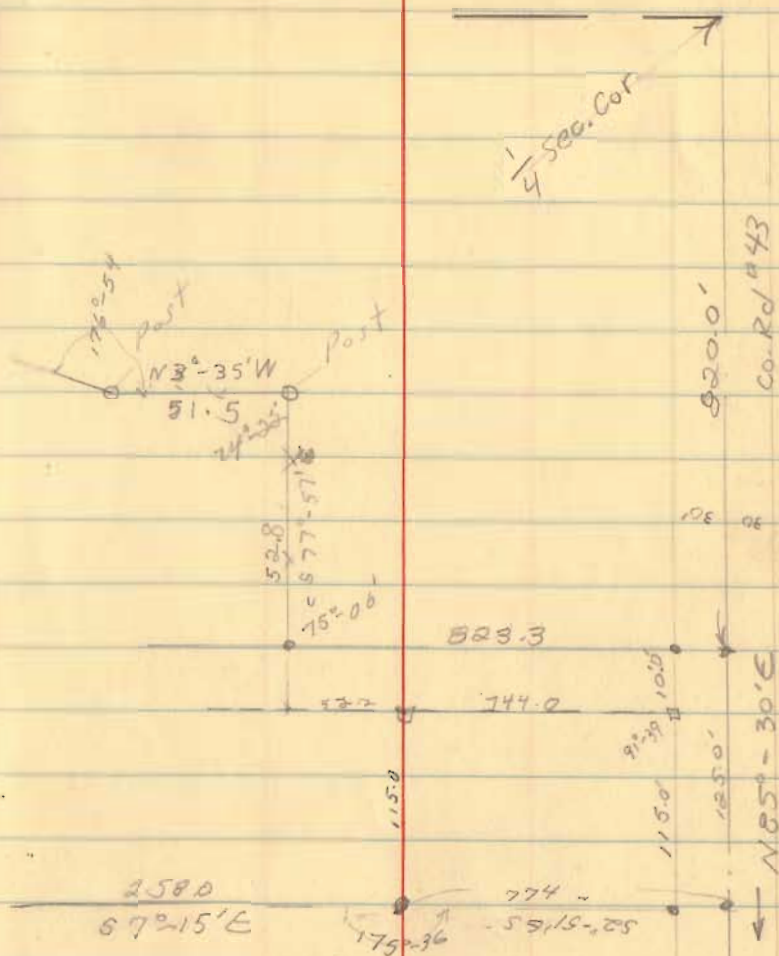


Hostetter to Thurman
 Sec 13, T-3; R-14
 Union Twp.



Oct., 16, 65

12



3859

INDEXED ON MAP

Nicholls Survey
Sec. 7, T-3, R-14
Union Twp

Ruby Tract,
61.0
20.5
89°-20'
1.00A
200.6
N 83°-04' W

Oct. 23, 65

14

32.4
50°-32'
Sta 156+00

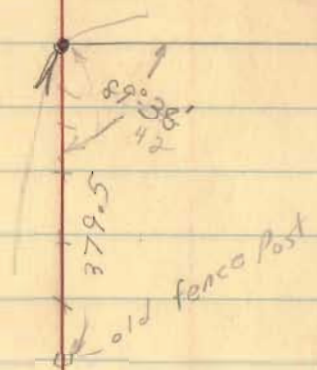
240.9
57°-26' W

40
7
85
04

6530

INDEXED ON MAP

Brandt Survey
 Sec. 14, T-7S, R-8E
 Bloomfield & Wash. Twp



N 7°-20' E

2497.0
 cal

N 83°-42' W
 1641.0

3912

INDEXED ON MAP



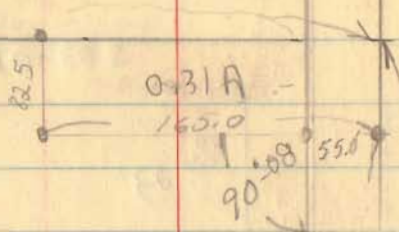
10320

S 10°-20' W

St. Route 69

April, 1966

2660.0



0.31 A

165.0

90°-00'
 55.0

1790
 24.5
 1765.5

1988 4th River

1692.5

1700.0

S. R. 274

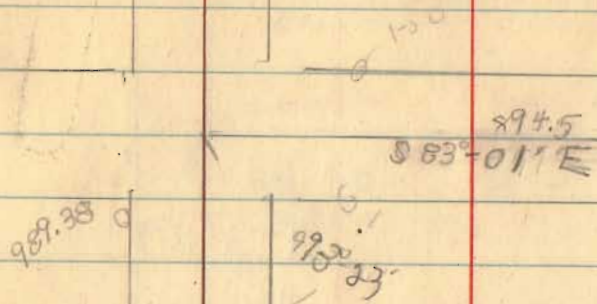
S 82°-48' E



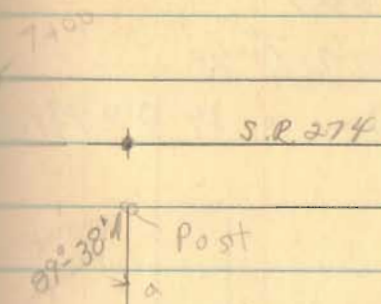
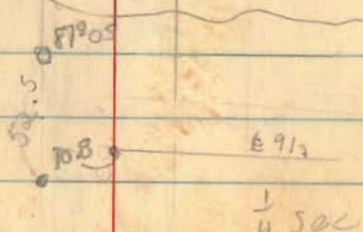
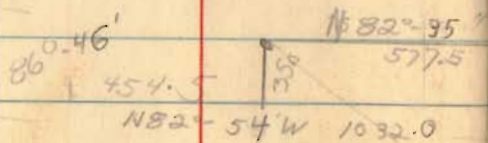
10250

2660.0

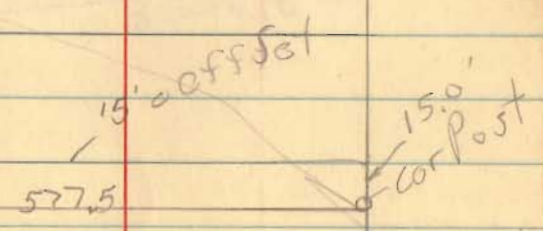
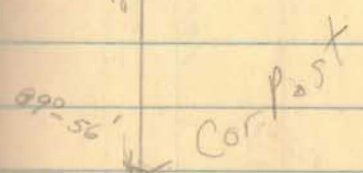
Brandt



S.R. #69
 N 10° 20' E → 2660.0'



2630.0
 N 7° 16' E

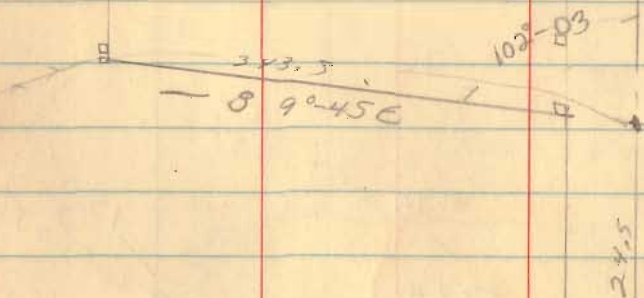
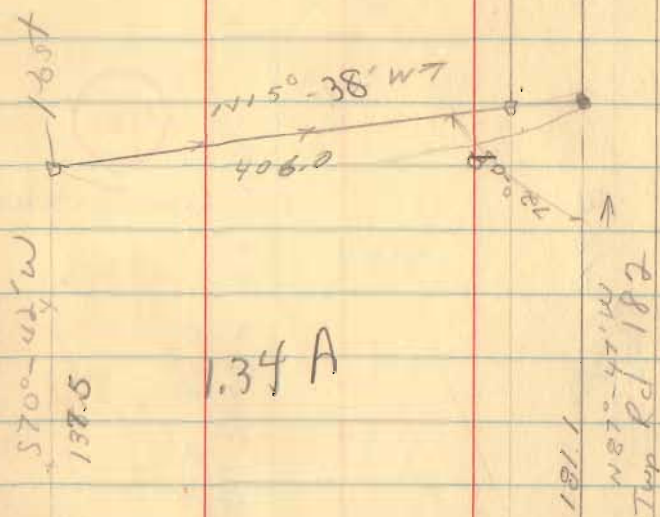


3981

INDEXED ON MAP

Godwin to Jackson
V.M.S. 6447
Jefferson Twp

Surveyed from a 34.9 @ Atrata



Sta 42+41
Sec Co Engr. F.B. 607
09 41

Aug. 25, 1966
R.R. #1
Huntsville, Pa

18

3896

INDEXED ON MAP

Russell Lame
 V.M.S. 9927
 McArthur Twp

Hub

29°-57'

North line of S.R.
 ← N 67°-32' W
 2163.0

W^m Hurley

11' E
 2060.0

27.60 A

5902

INDEXED ON MAP

April 9, 66

20

East 1/2 Collett

Stone found

57°-12' E
 1018.5

East line of
 V.M.S. 9927

Post

1475

155°-22'
 146.3
 105 X
 946.5

60°-20'

Fred Molitor
Sec. 33, T-4, R-14
Lake. Twp

RRS. place on Mon
NW. Cor. of Sec. 33
Co. Rd #1
1489-29' ~~E~~
4428

90°-31'

90°-53'

Co. Rd #216

North →

673.8

6.94A

681.8

← 50°-24'E

90°-32'

4490
N 89°-38' W

Apr. 16, 63

22

6130

INDEXED ON MAP

Latimer
Jefferson Twp

Co. Rd. #182

V.M.S. 3220

V.M.S. 6449

2913

INDEXED ON MAP

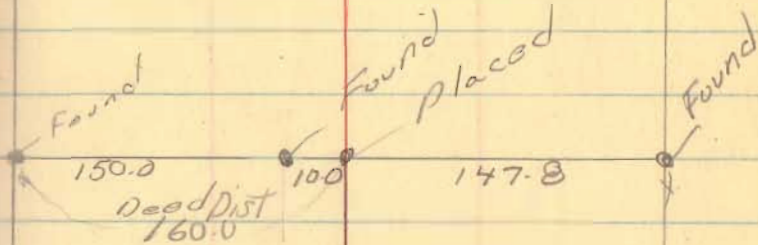
see Bk #4
pg 37

266.8

353.2

April, 66

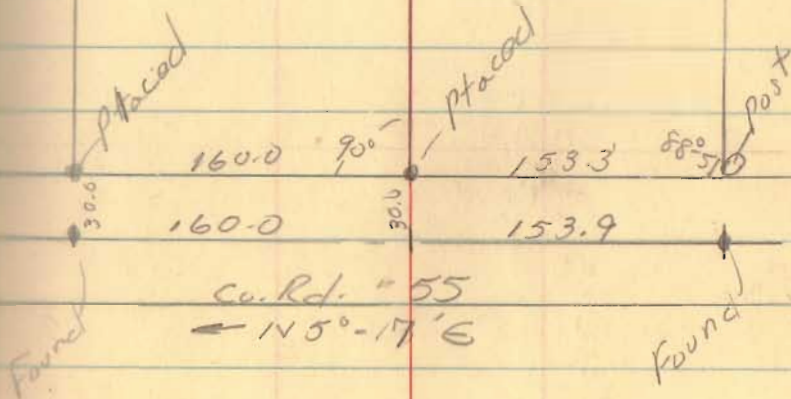
24



270.0

R. Latimer

270.0



30.0

160.0

90°

153.3

88°50'

160.0

30.0

153.9

Co. Rd. # 55

← 145°-17'6

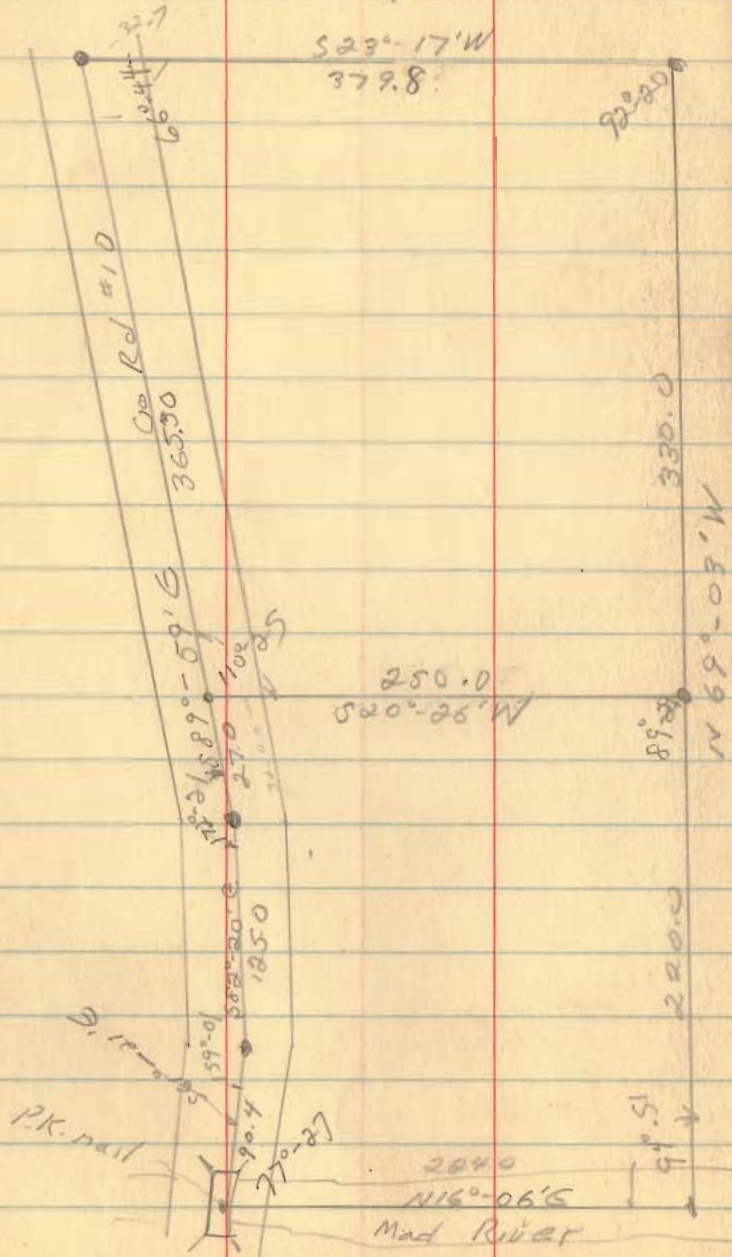
Marion

MS 3137

Jefferson Twp

May, 1966

26



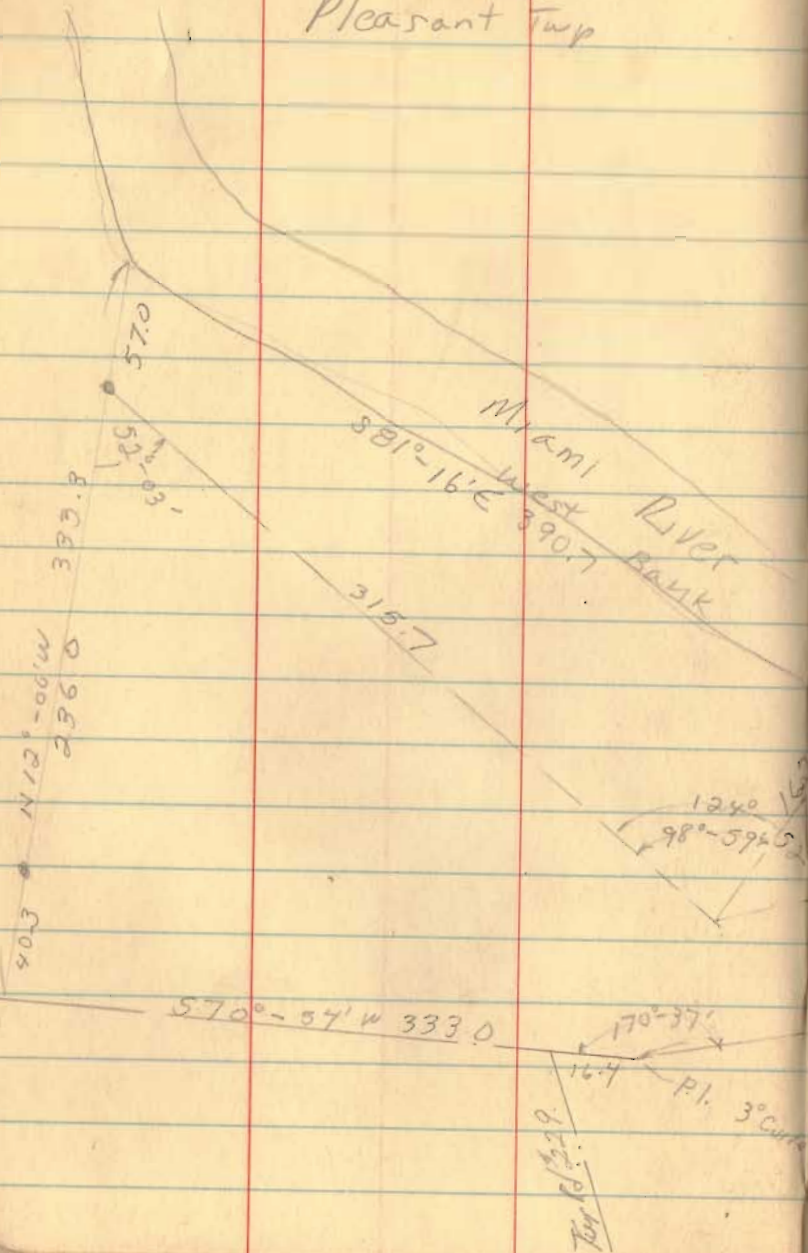
3570

INDEXED ON MAP

Klingelhofer
 Sect. 12, T. 1, R. 8
 Pleasant Twp

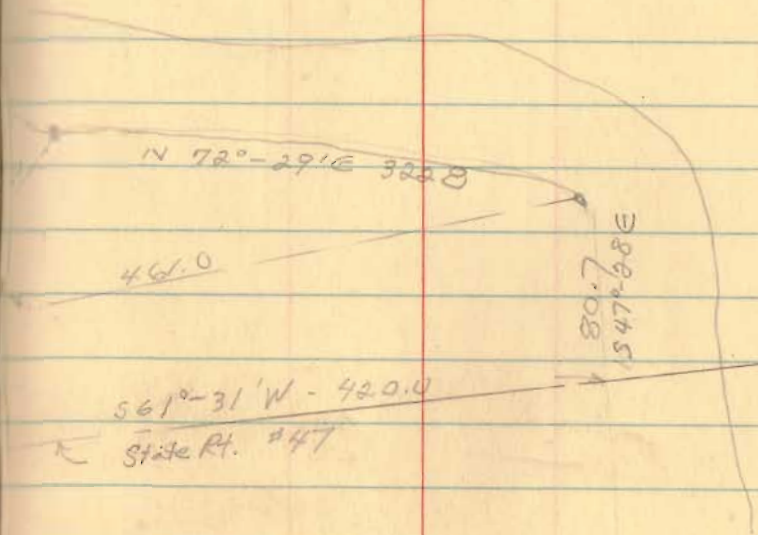
May 14, 1866

28

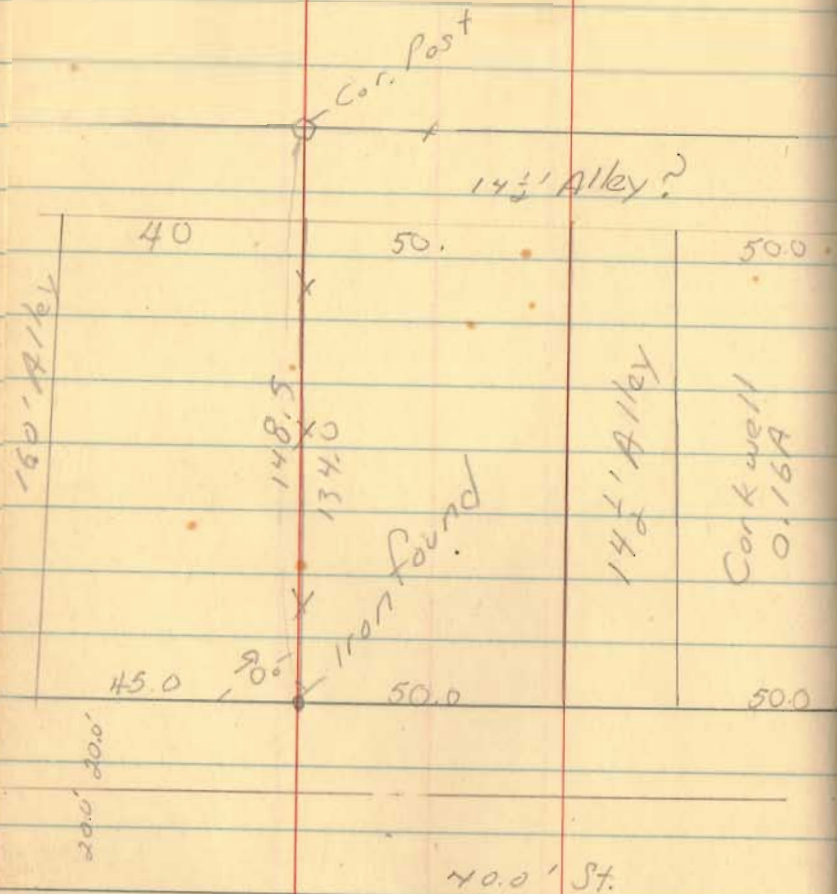


3919

INDEXED ON MAP

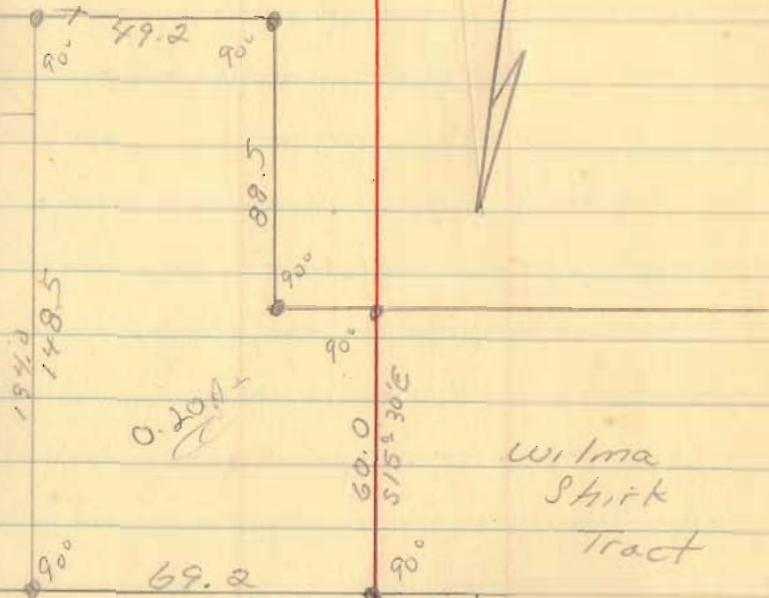


Corkwell
West Mansfield



June, 4, 66

30



6124

INDEXED ON MAP

Dean St. &

40.0'

Fultz } for state
Stokas }

$N 89^{\circ}-38' e$
1320.5

$90^{\circ}-10\frac{1}{2}$

882.5
 $N 0^{\circ}-11\frac{1}{2} W$

34.53 A

Curves 40 0A

476.8
 $N 0^{\circ}-07' W$

$82^{\circ} 51'$
 $142^{\circ} 30'$
 $N 87^{\circ}-16' W 1341$
461.3
 $S 55^{\circ}-14' W$

$87^{\circ}-39' W$
323.7
 $163^{\circ}-00' N$
2-4P
158-25
41

325.0
 $26^{\circ}-21' W$
159-05
183.8
 $87^{\circ}-44' W$
106-48
141

Iron in Fence
from
Wonders line

3962

INDEXED ON MAP

July, 66

Sec. 23 T. 6 R. 8

Sec Line

36

post

$90^{\circ}-14$

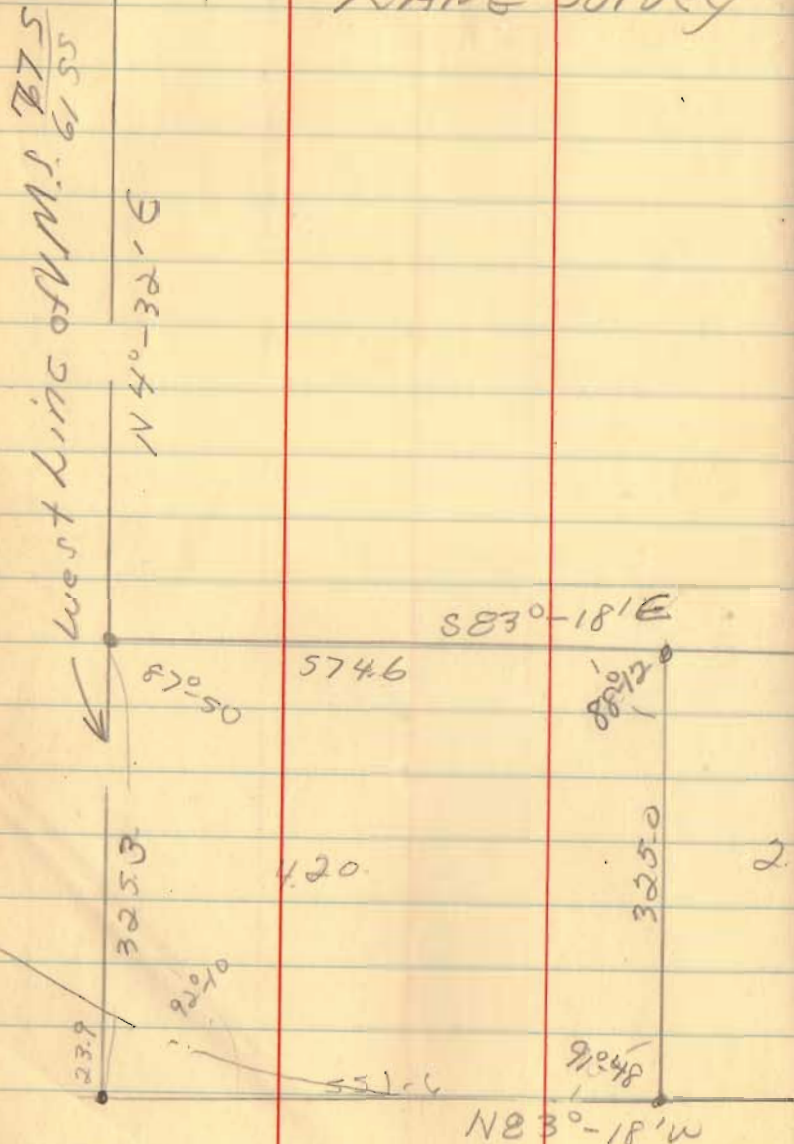
1008.5
 $S 0^{\circ}-36' E$

Iron
from
W.L.

Boker Creek Twp
V.M.S. 775-6155

LANG Survey

West line of V.M.S. 6155



July, 66

32

3937

INDEXED ON MAP

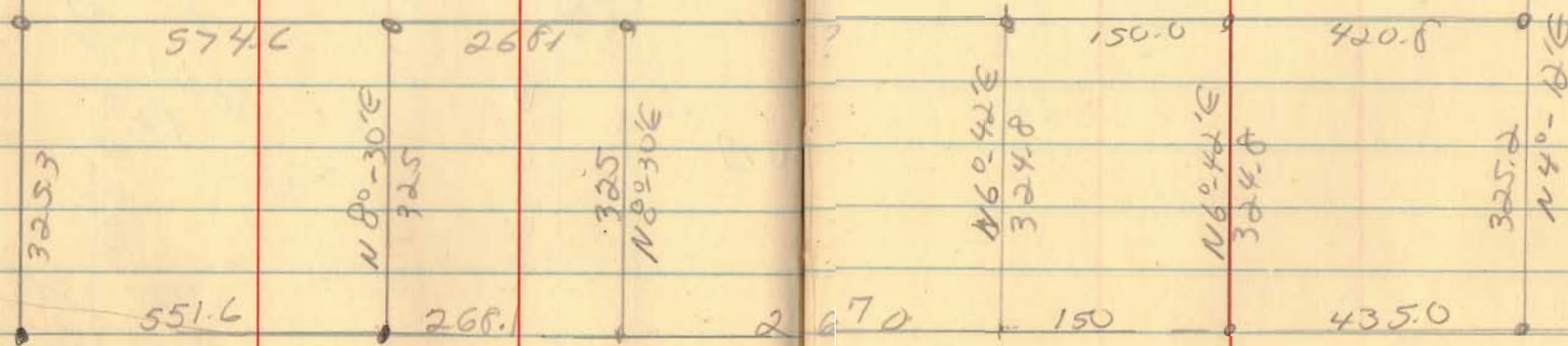
Berg Joyce
Fed. Land Bank

See next
Page

State Route 47

X
N 40° 32' E

X



3937

INDEXED ON MAP

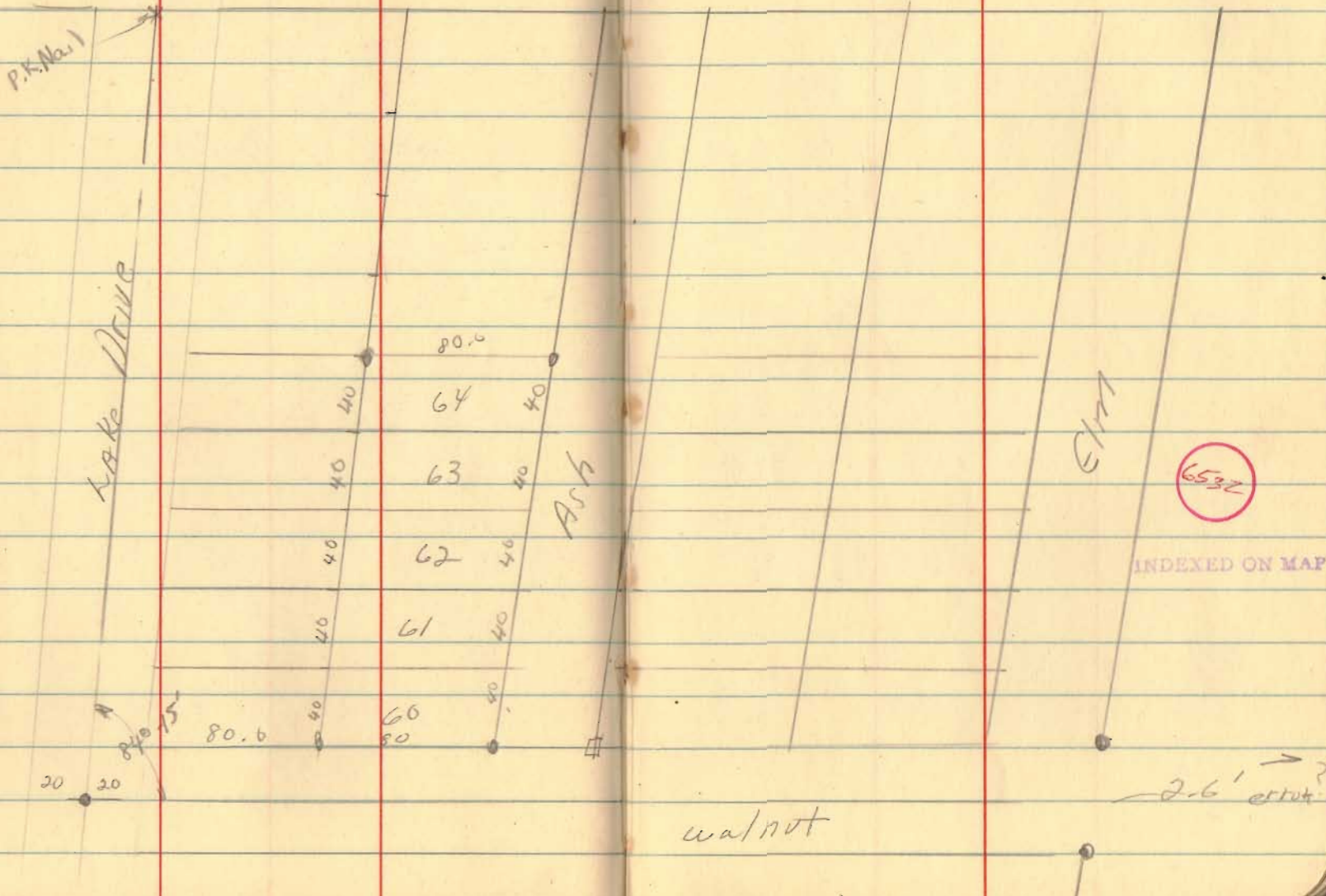
Avondale

July, 66

41

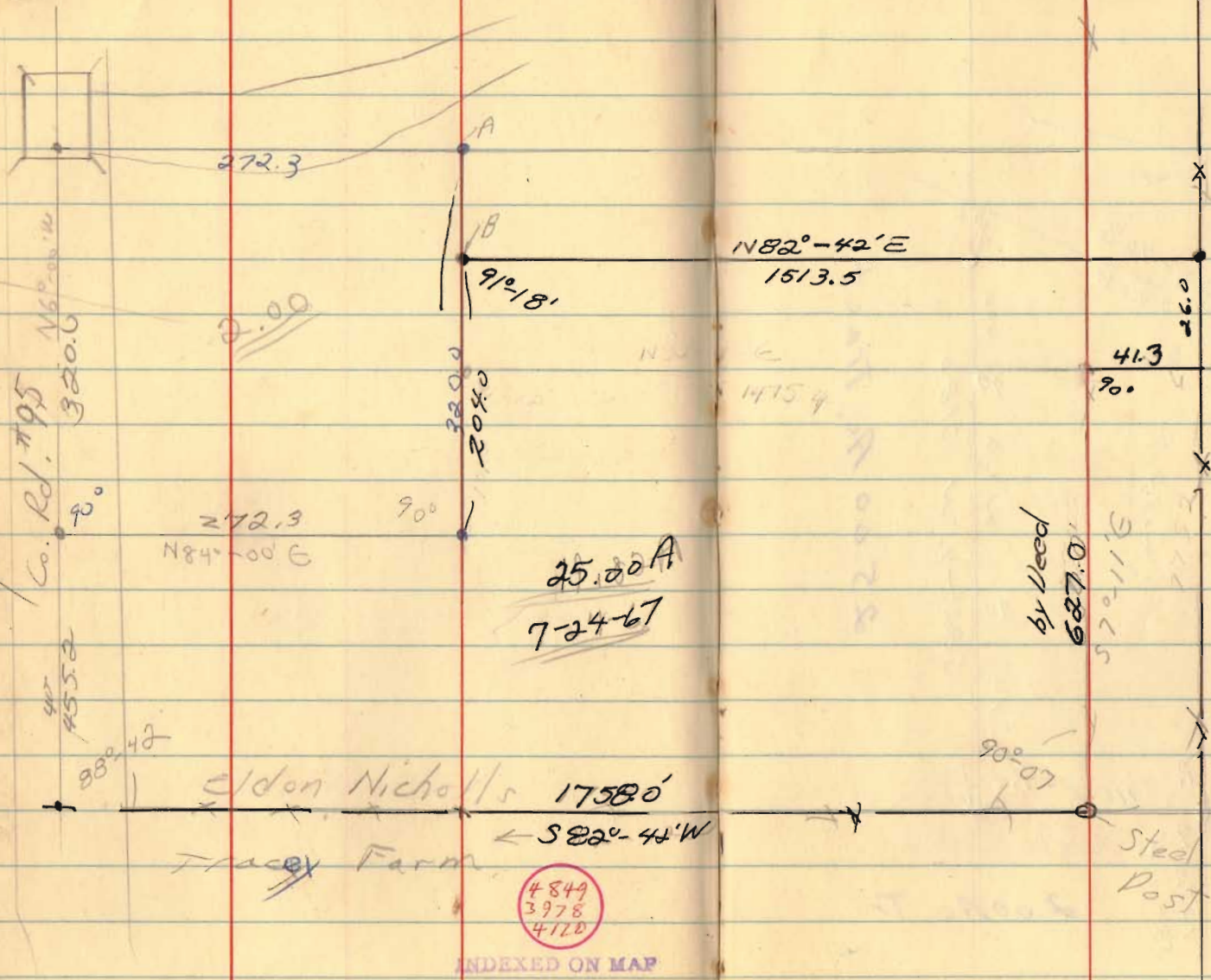
see Bk 5, pg 31

St. Route #9



Nicholls Survey
 V.M.S. 9947
 Richland Twp.

Aug. 23, 66



4849
 3978
 4170

INDEXED ON MAP

991

14.8
 6.2
 51.0
 20
 1010
 607
 413

Aug. 22, 66

B

N78°E 105 pl

320
455
775

IV

14

112°-W 202 pl

1740.15
1053

3120

20-84

S78°-W
108 pl

5800

2 1/2 miles
D. W. B.

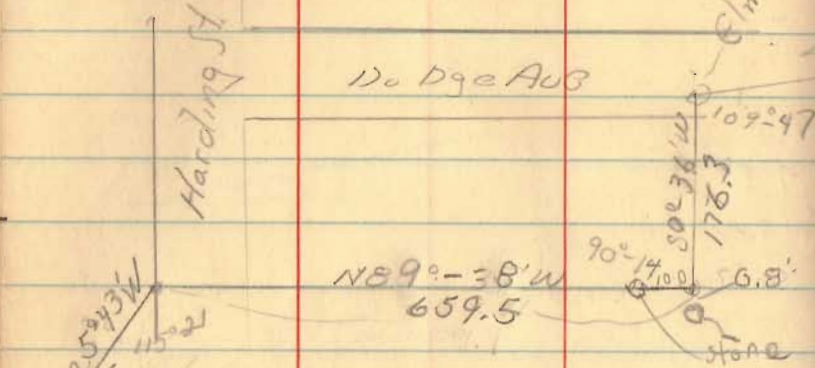
20 miles
6270

Sch. Ground on
Old Sharp farm
Sec 24 & 25, T. 4, R. 14
Laka Twp

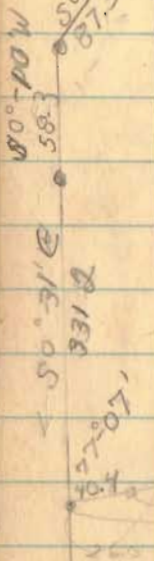
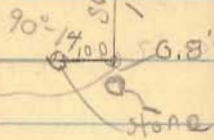
Harding St

Do Dge AUG

6' in Tree



N 89° - 38' W
659.5



12990
N 1° - 13' E

8479
N 76° - 36' E
903.7

28° 40'
1885 - 16 E
2001

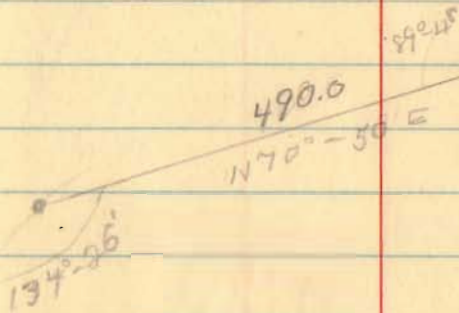
95

S 70° - 49' W
785.4

90° 11'

D. 58 E
N. 12 C - 10 B
N. 12 C - 10 B

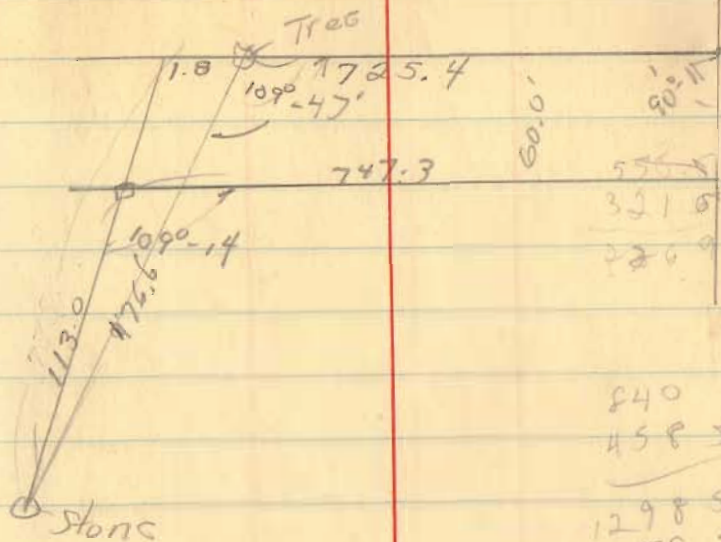
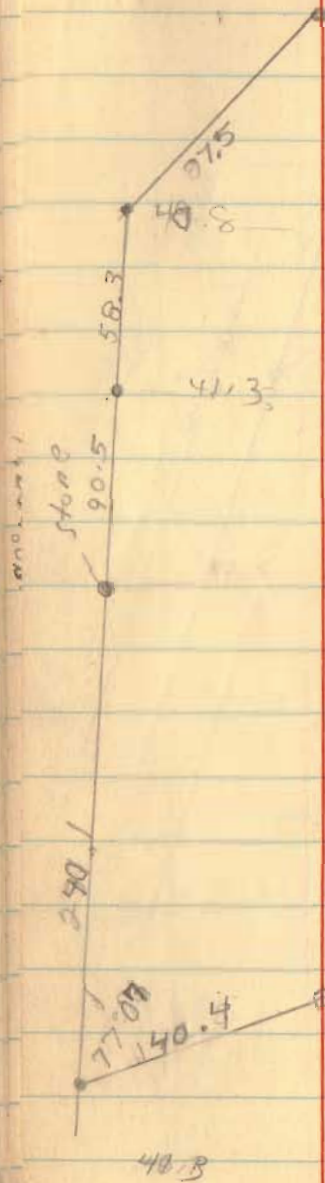
78-80
45-34
25-16
31-20
76 30
47



39172

INDEXED ON MAP

113
235
1765



3972

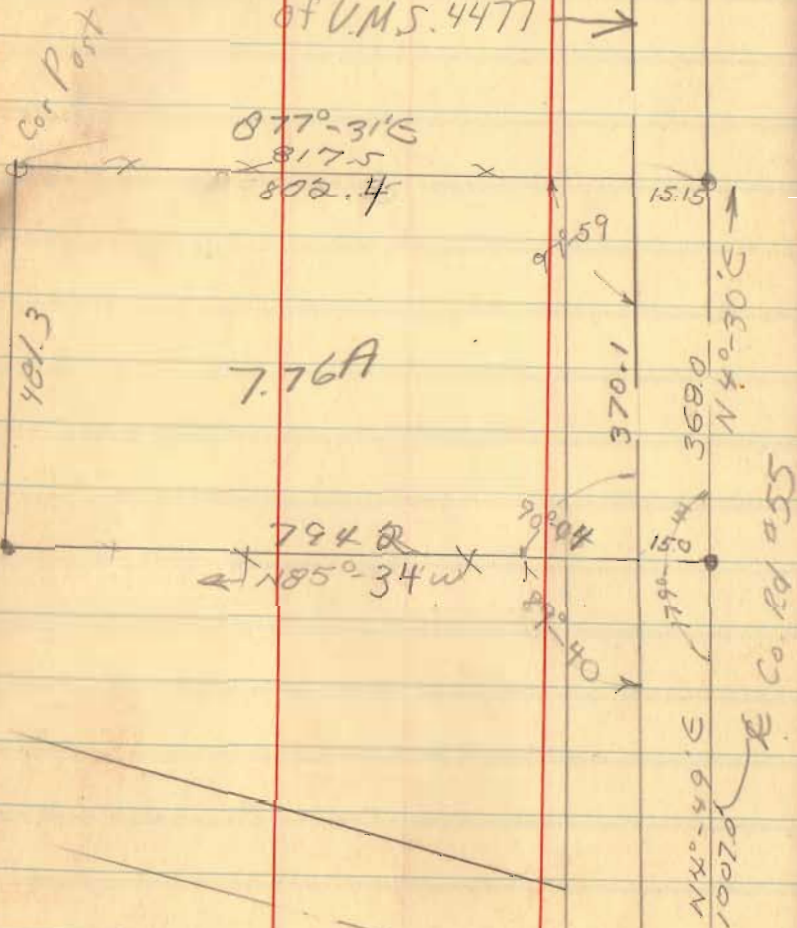
INDEXED ON MAP

840
 458.5
 1298.5
 78.5
 1020
 22.5
 40.1
 82.0
 41.3

77°-10

Faulk Survey
U.M.S. 4477
Jefferson Twp.

East Line
of U.M.S. 4477 →



48 ✓

82°-01
490

77-31

3971

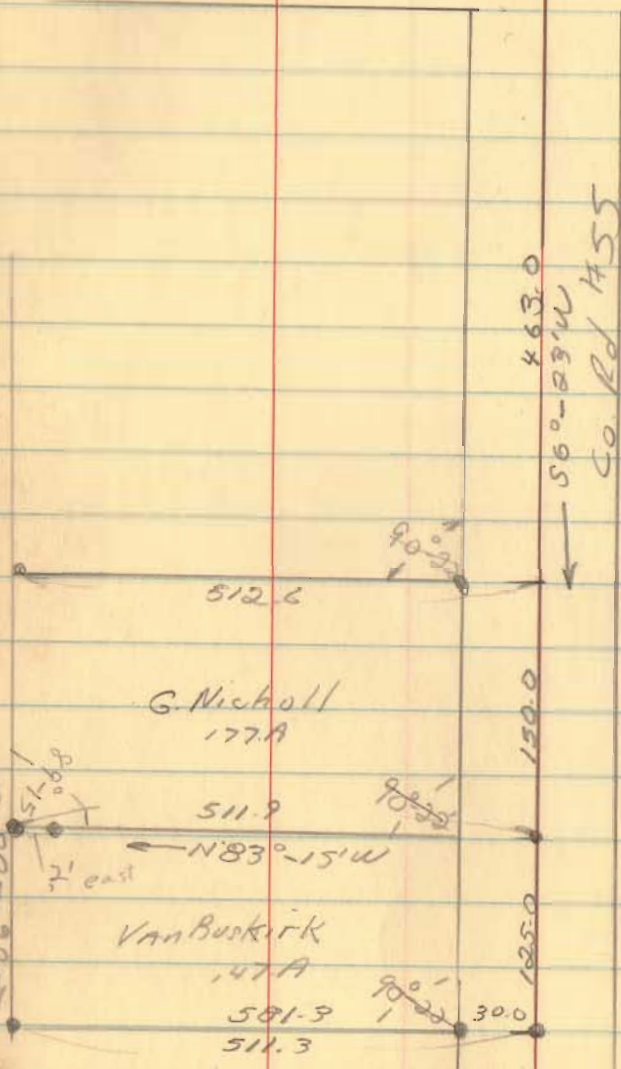
INDEXED ON MAP

G. Nicholl
V.M.S. 3220
Sept. Tur

July 66

50

Co. Rd #10



Reference
Never Used

2860

INDEXED ON MAP

Yalton Survey
Bellefontaine

586°-38'E →
(903.4
cal.)

Trot Rd.
N 40°-26'E
929.6

14.15A
Cal

on 25' base lot
819.6
620.1

15.0 324.2

416.5
N 86°-50'W

WEST

Sept, 66

steel post

Corp. L.
F. N. Lines of Sec. 35-52

49°-49'

586°-38'E

456.5

round
conc

471.0

543°

139°-37'

561.0

532.10 W

1350

6533

INDEXED ON MAP

915

1750

446.0

850

421.0

200.0

OHIO

Euclid

Rail Rd. Report

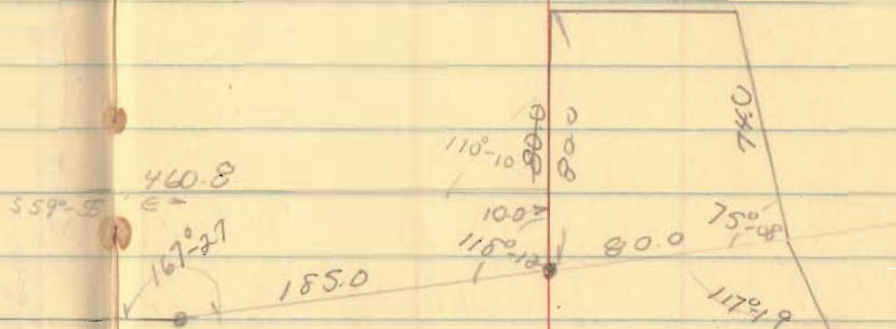
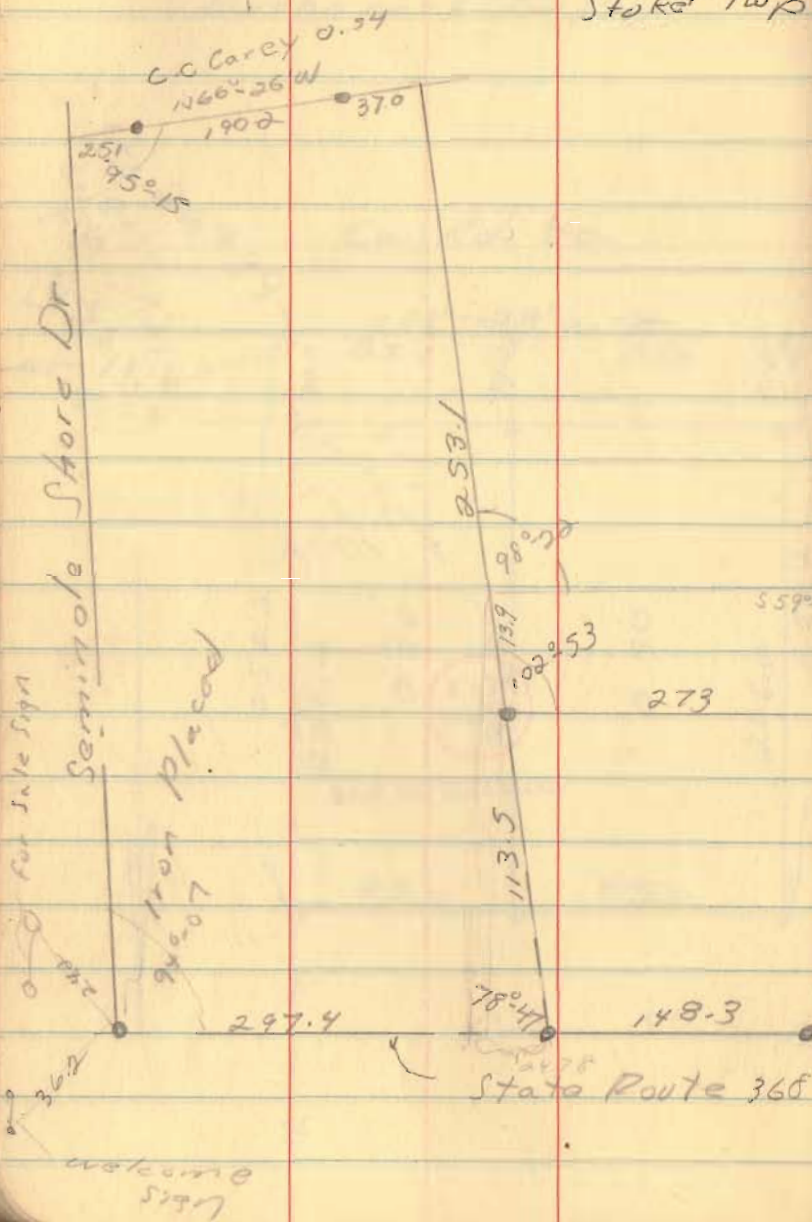
Between
Seminole Shore

& Stawne Is.

Stoker Twp

Jan., 67

58



4489

INDEXED ON MAP

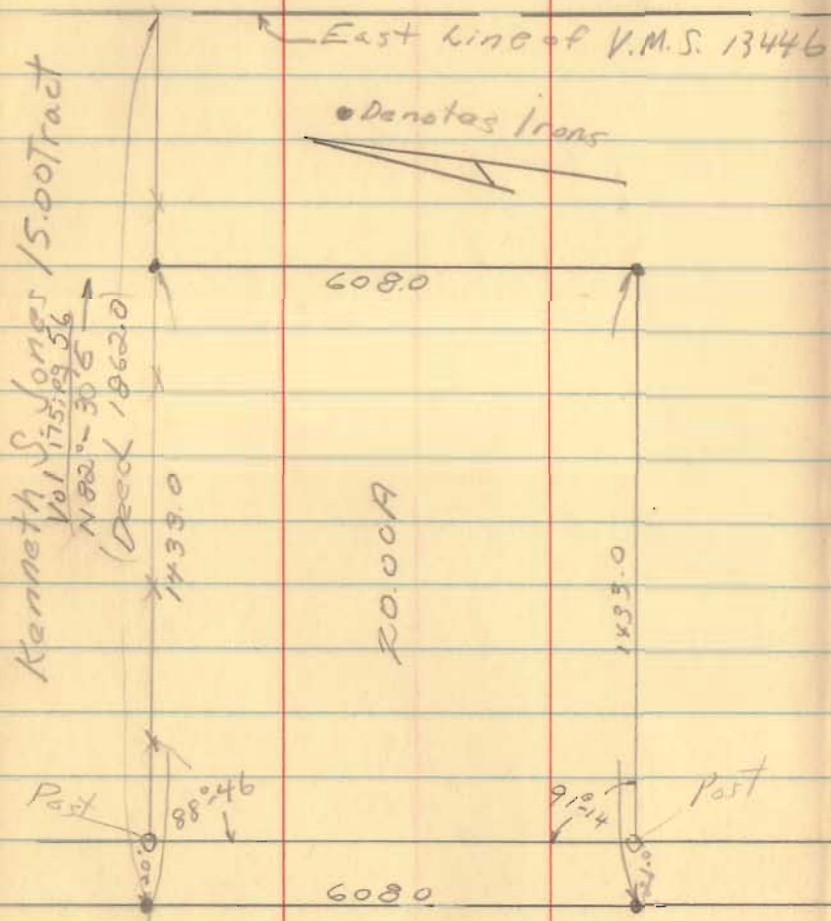
P.T.

Frances Oats
V.M.S. 13446

Rushcreek Twp.

Mar. 4, 67

60



4071

INDEXED ON MAP

Fred J. Eads
 V.M.S. 3439
 Jefferson Twp

Sta 8491

2278

30.7

0.95A

2580

1.07A

18" Ash

288.1

← N86°-12'S

Stone Sta. 16444
 Soc. Co. Eng. S.
 F.B. 513, 1973

March, 67

62

4072

INDEXED ON MAP

0.94A

0.97A

.10A

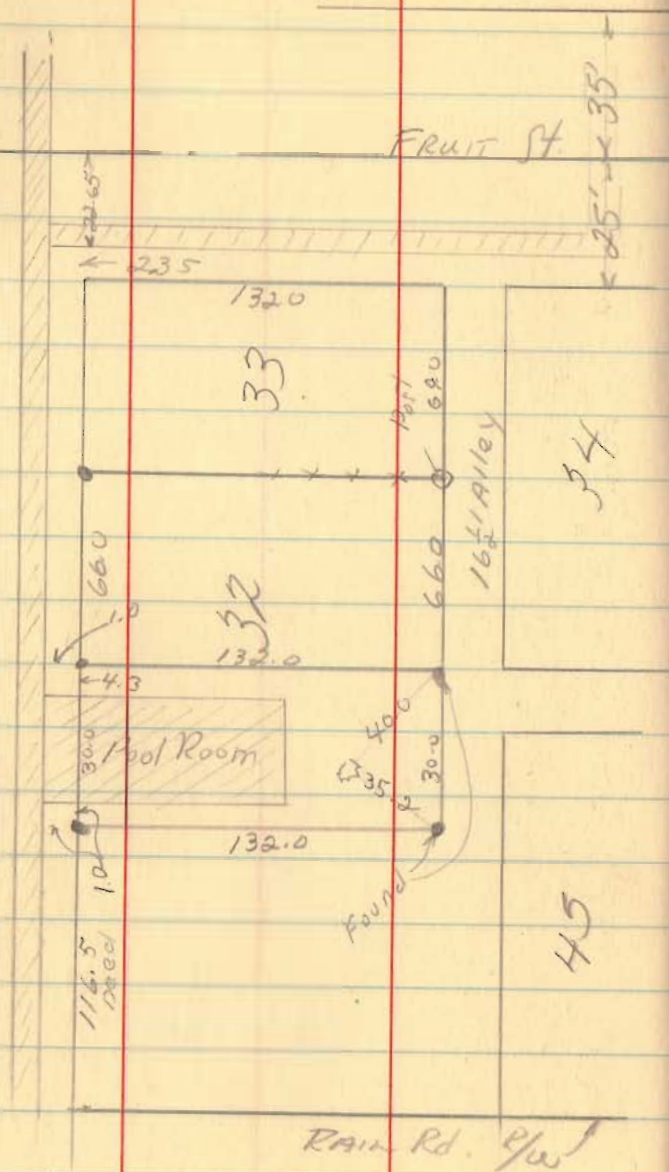
From 60.75A Tract

Glen Hurley (Lot 32)
Huntsville

Feb., 67

64

E Napoleon 60' S75°E



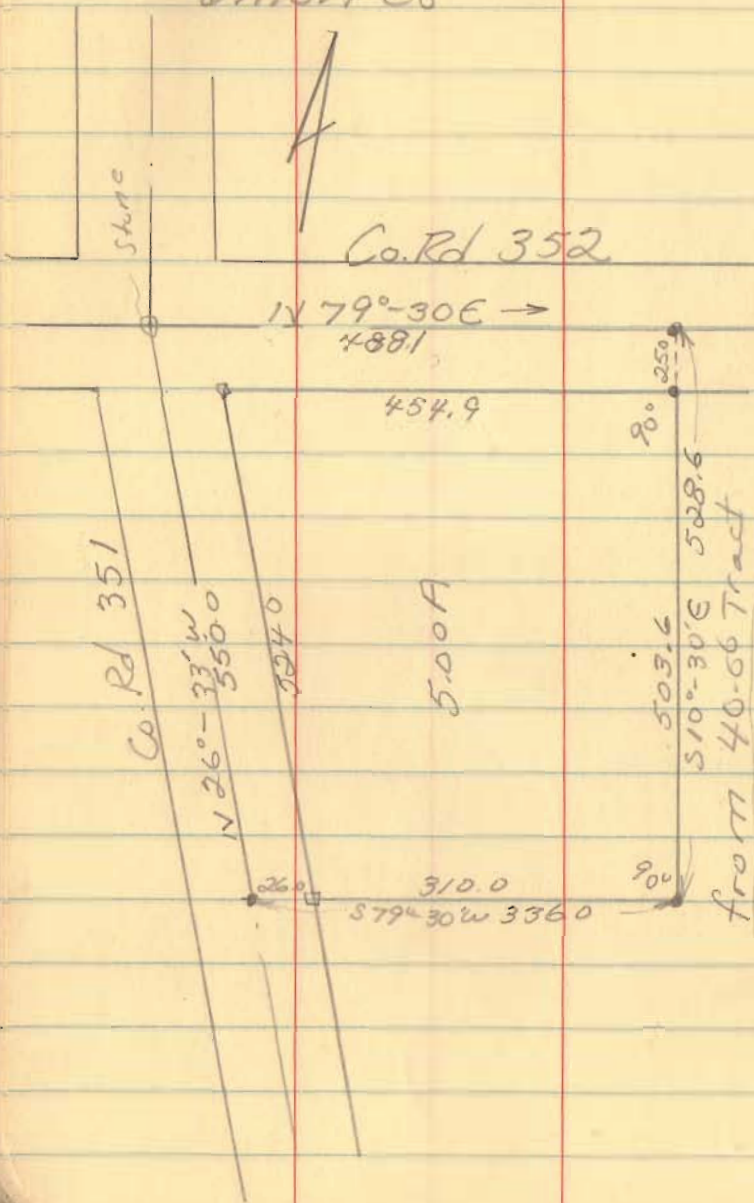
6134

INDEXED ON MAP

Risk Survey
V.M.S. 12112
Wash. Twp
Union Co

March 18 67

66



Hubbard Survey
for Lot 176 pt.
Bellfontaine, O

Court St.

54.88 54.88 x 44.88 100. 54.88¹
89254
1

158 173 176 183

220.53

110.25

110.25

Found

220.51

44.86

220.49

40.09

Found

220.47

Madriver

4074

INDEXED ON MAP

54.85 54.85 x 44.85 100. 54.85
Found
90107
90106

Chillicothe

89-51

