

Neeley Island

A iron at end of  
SR 708 - See Cu. Engr ~~69~~  
F.B. 590, pg 19

S.R. 708 - S 29° 12' W



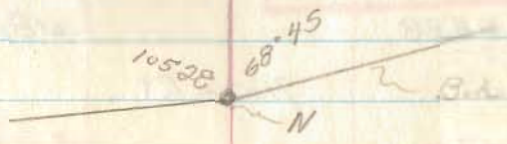
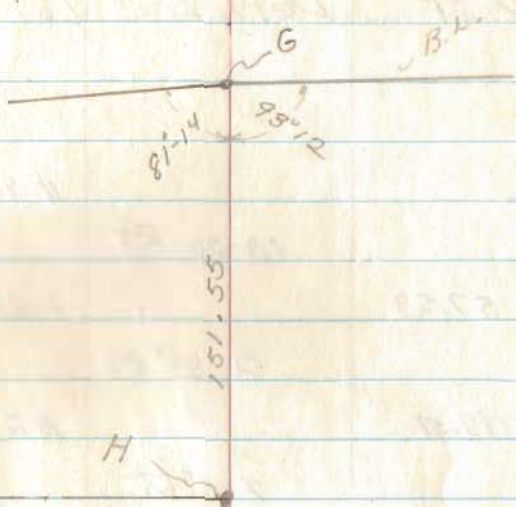
E or Drive on Neeley Isl

INDEXED ON MAP  
3956

BASIC TRAVERSE - NEELEY

Pt	Dist.	Defl. $\angle$	Cal Bear.
L	207.14	4°-14L	S 31-40W
K	146.39	2-23RT	S 29-17W
J	85.00	92-16RT	S 62-59E
G	69.93	5-34 RT	S 68-33E
F	30.00	25-33 RT	N 85-54 E
E	70.15	58-18 RT	N 27-36E
D	55.93	12-24 Lt	N 40-00E
C	97.35	79-33 Lt	S 60-27E
B	622.64	89-39 Lt	S 29-12 W
A			

INDEXED ON MAP  
3956





INDEXED ON MAP 5

Pt	Dist	Defl. L	Cal-Bear
D			N 40-00 E
C	57.53	18-26 RT	N 21-40 E
S	47.51	0-38 RT	N 21-02 E
R	141.10	7-09 LT	N 28-11 E
Q	141.00	2-15 LT	N 30-27 E
P	128.63	14-30 LT	N 44-57 E
O	116.57	15-0-12 RT	N 75-15 W
N	100.88	5-47 RT	N 81-02 W
M	247.00	71-32 RT	S 27-26 W
L			

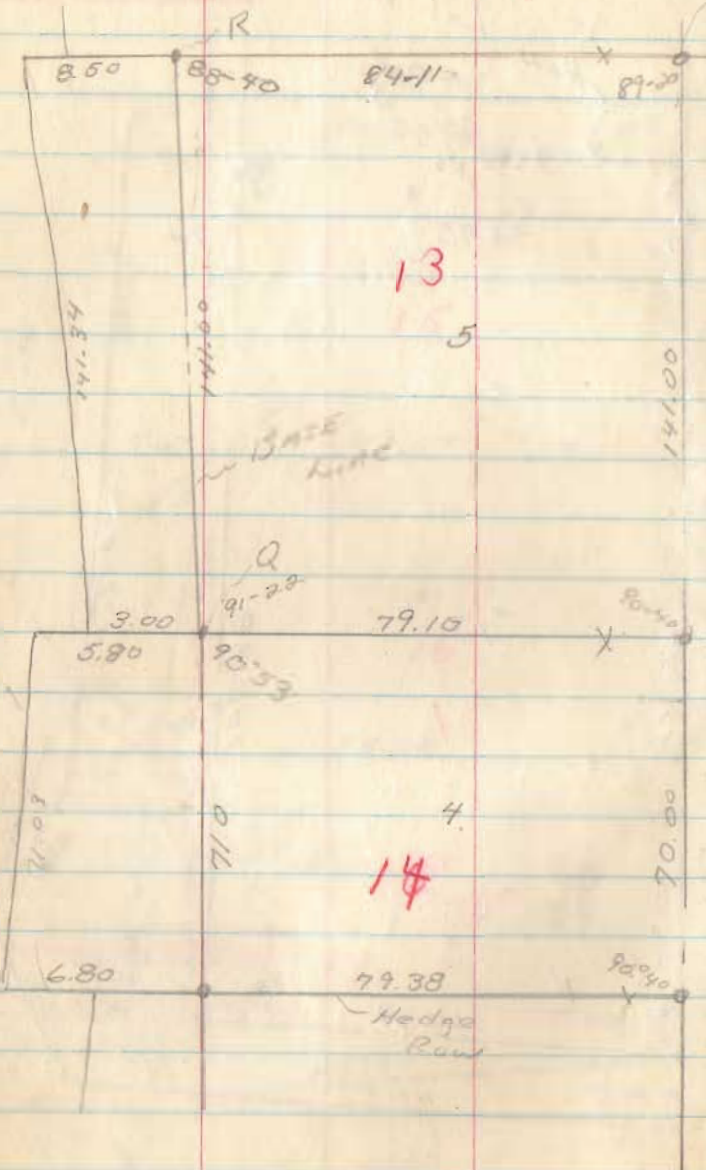
INDEXED ON MAP

INDEXED ON MAP  
3956



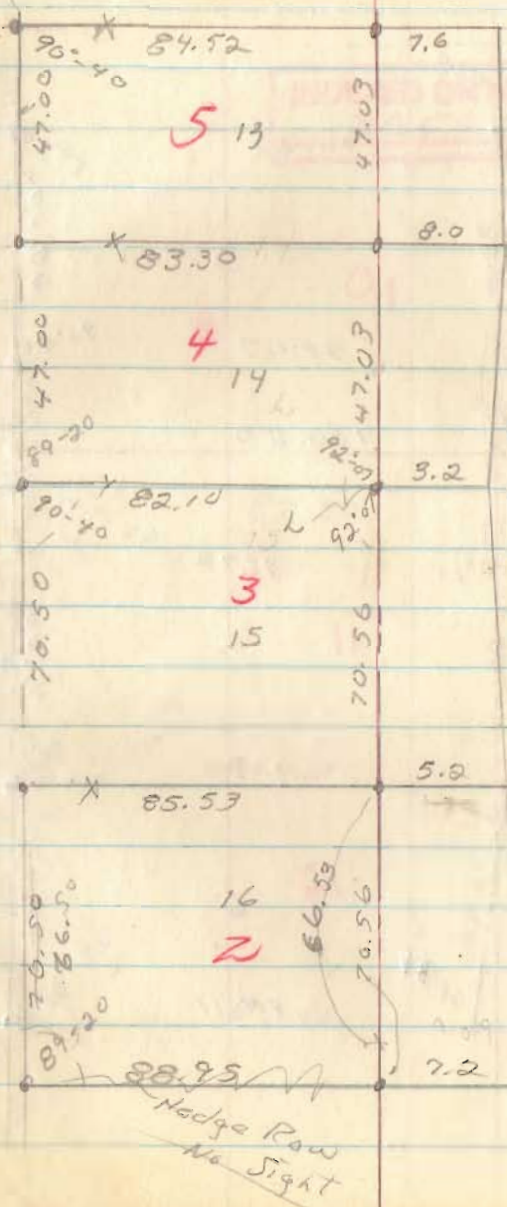


SHORE  
LINE



Same  
pt.

INDEXED ON MAP  
3956

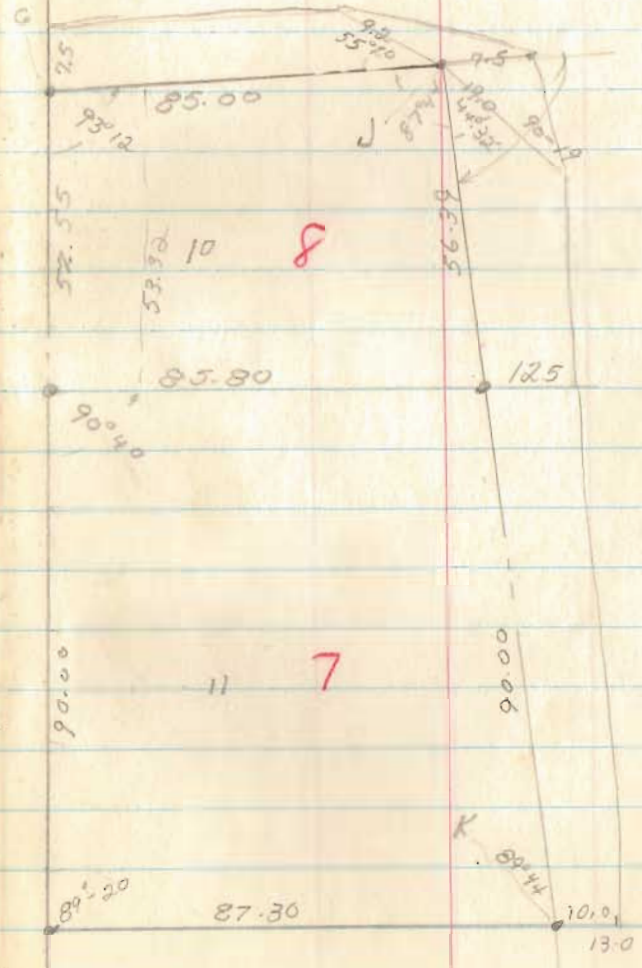






INDEXED ON MAP  
3956

INDEXED ON MAP



7

8

9

1958

INDEXED ON MAP

4167

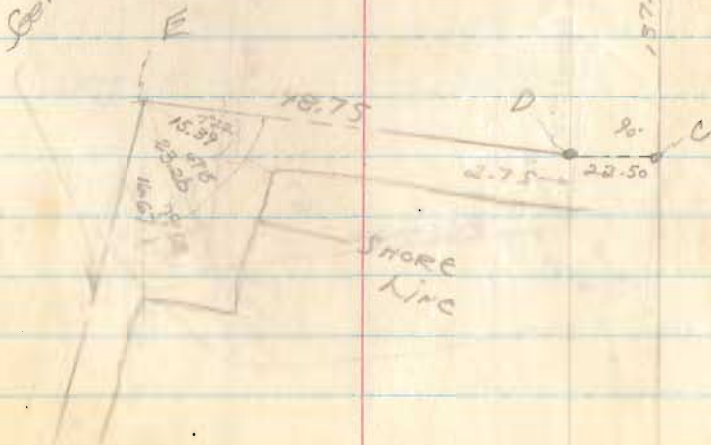
12

Schulers

Pt	Dist	Def L	Cal. Bear.
A			N 29-12 E
B	22.50	90-00 Lt	S 60-48 E
P	22.02	59-36 Rt	N 59-36 E
N	30.33	54-11 Lt	S 66-13 E
M	43.05	31-33 Rt	N 82-14 E
L	142.75	34-36 Rt	N 47-38 E
K	49.75	9-18 Rt	N 38-20 E
J	90.87	6-42 Rt	N 31-38 E
I	59.05	11-17 Rt	N 70-21 E
H	65.08	85-21 Rt	N 65-00 W
G	129.23	86-02 Rt	S 28-58 W
F	113.42	5-32 Rt	S 34-31 W
E	48.75	87-53 Lt	N 57-36 W
D	27.5	3-12 Rt	N 60-48 W
C	137.25	90-00 Rt	S 29-12 W
B	779.18		S 29-12 W
A			

Iron at end of S.R. 708 → A

See Next Page





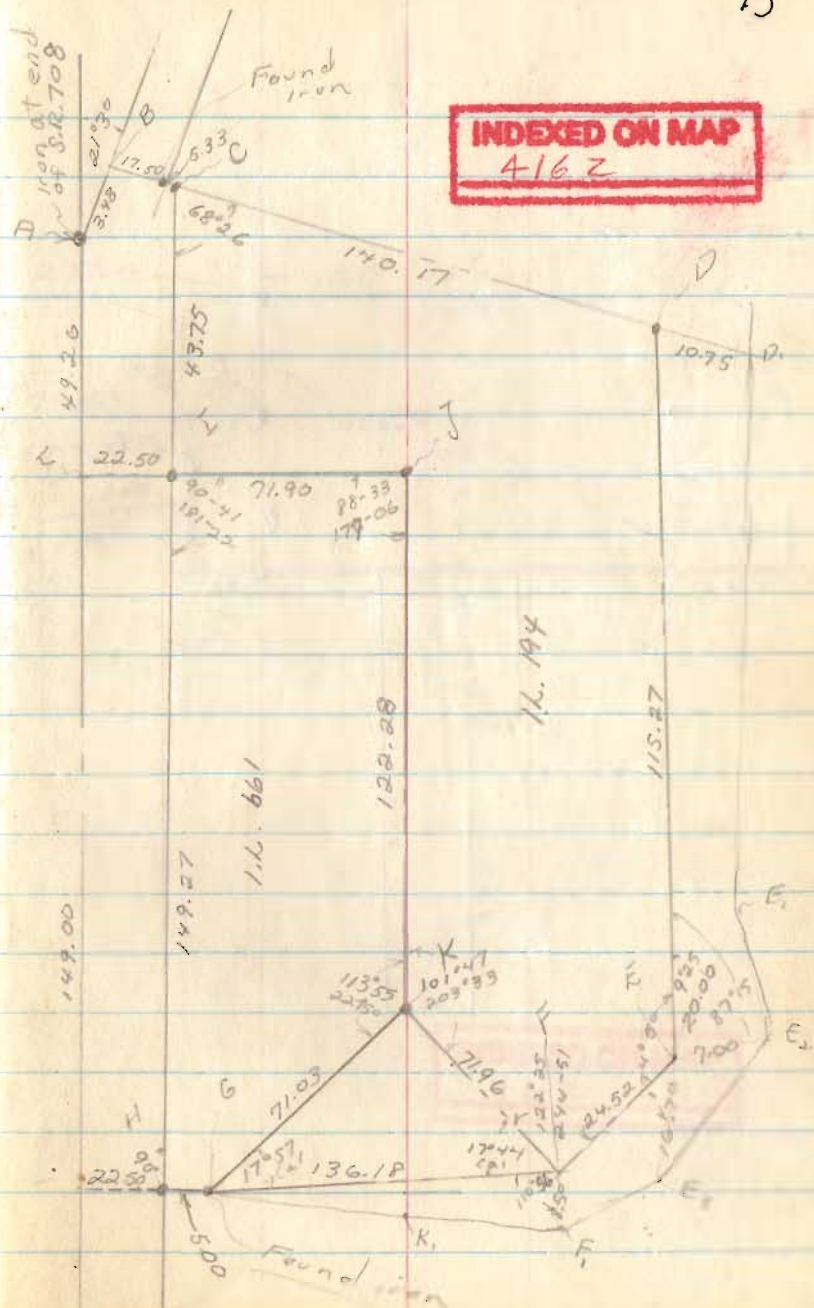


L.L. 661 + L.L. 194 + 661  
 H.E. BECKER

1958

15

PT	Dist.	Defl. L.	Cal. Bear.
		178° 38	
I	149.27	89°-19 RT	N 29-12 E
		180° 00	
H	5.00	90°00 RT	N 60-48 E
		46°18	
G	71.03	23°09 RT	N 83-57 W
		132° 10	
K	122.28	66°05 RT	S 29-58 W
		182-54	
J	71.90	91-27 RT	S 61-29 E
I	22.50	0°00	S 61-29 E
L	49.20	180-22	S 29-12 W
		90-41 LT	
A			
		223-08	
C	193.02	111-34 RT	N 29-12 E
		180-00	
H	5.00	90-00 RT	N 60-48 W
		10°-23	
G	136.18	5°-12 RT	N 65-59 W
		79-42	
F	24.52	39-51 RT	S 74-10 W
		117-33	
E	115.27	58°46 RT	S 15-24 W
		109° 15	
D	140.17	54°38 RT	S 39-14 E
C			
		113°55	
C	22.83	180°08	S 39-14 E
B	3.48	90°04 RT	N 50-42 E
A			



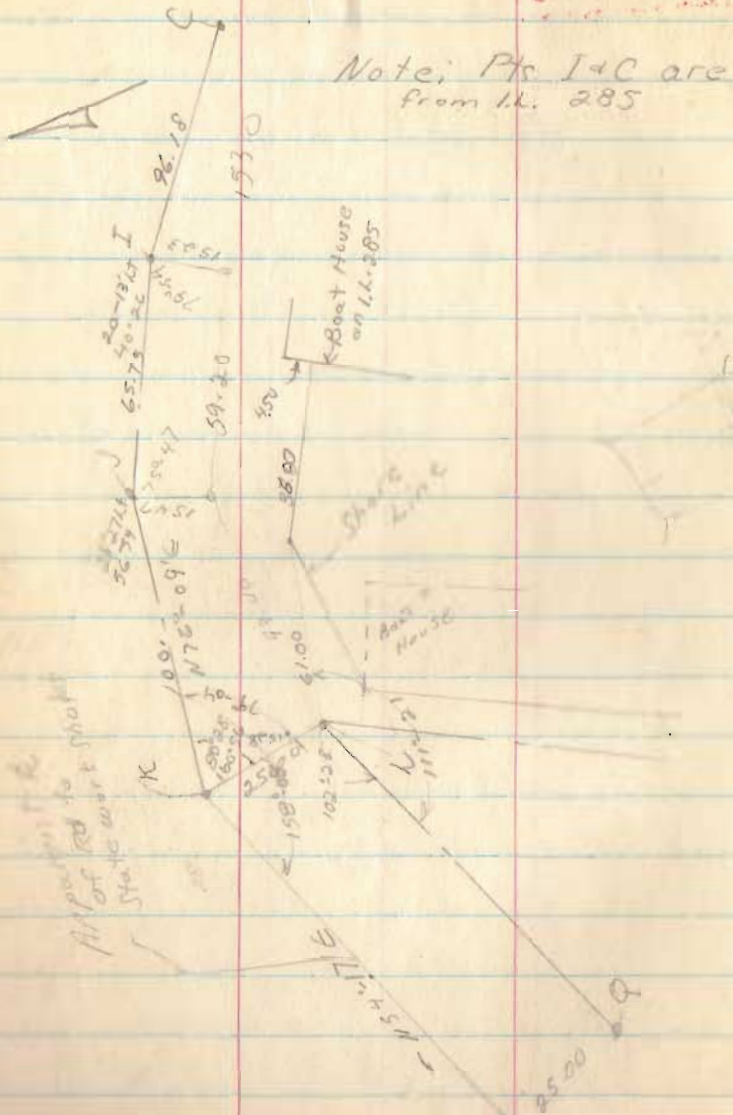








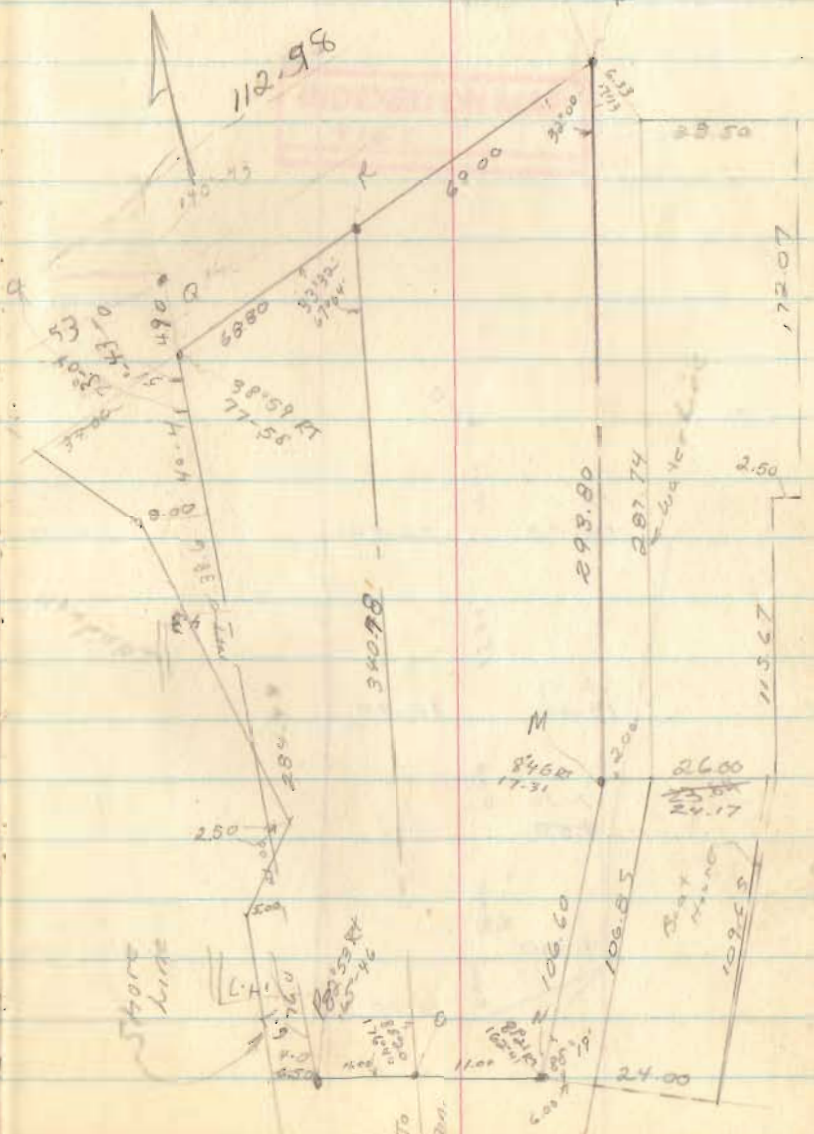
11. 630



Note: Pts I & C are from 11. 285

INDEXED ON MAP  
416Z

19



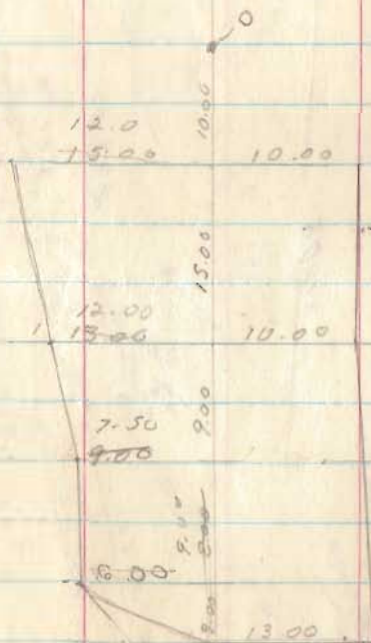
Ext. at end of  
H. 630

INDEXED ON MAP

20

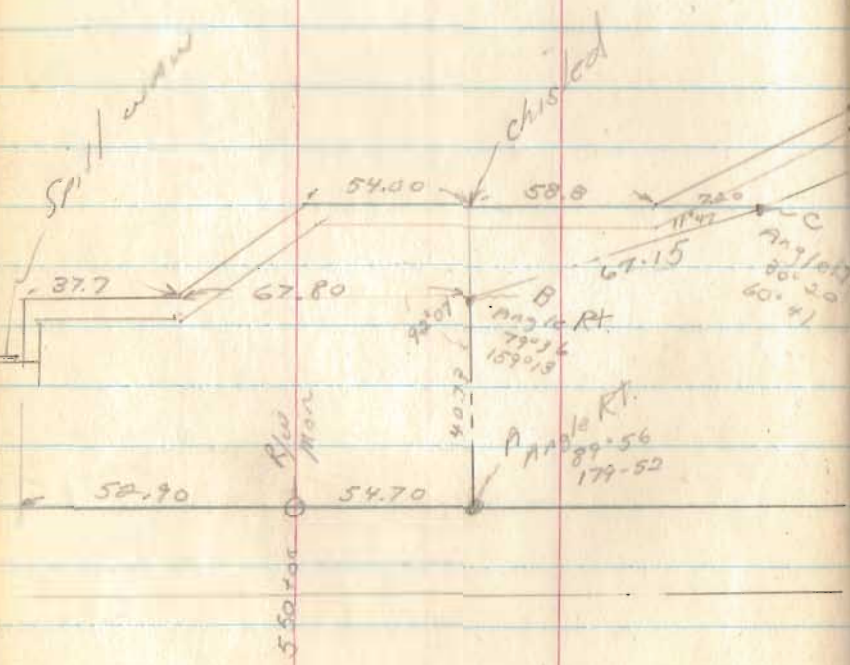
R

INDEXED ON MAP  
4162





1.L. 650



22

