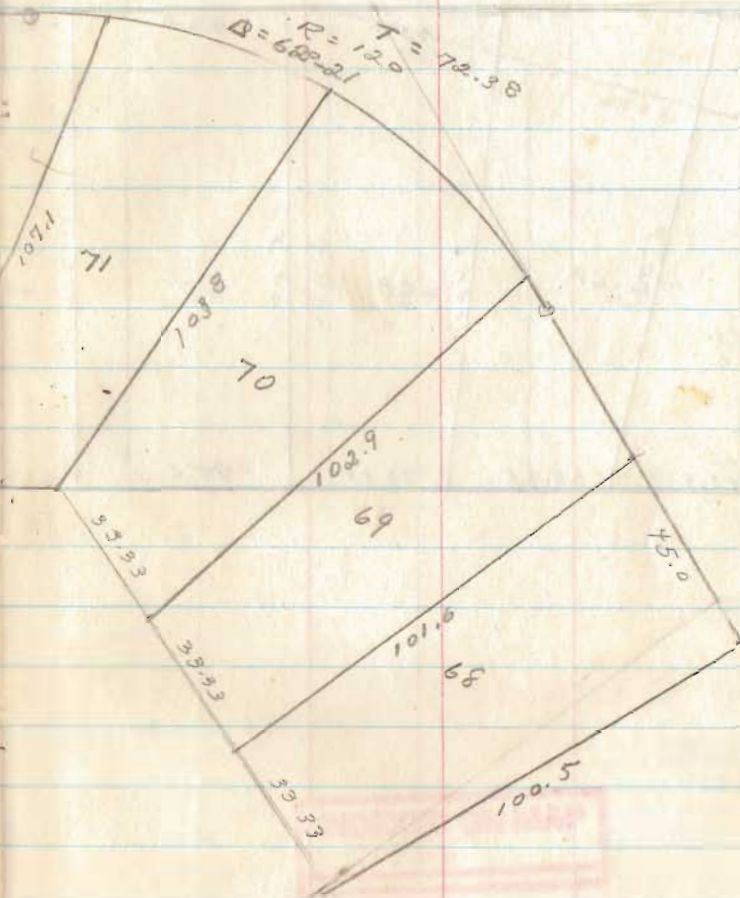
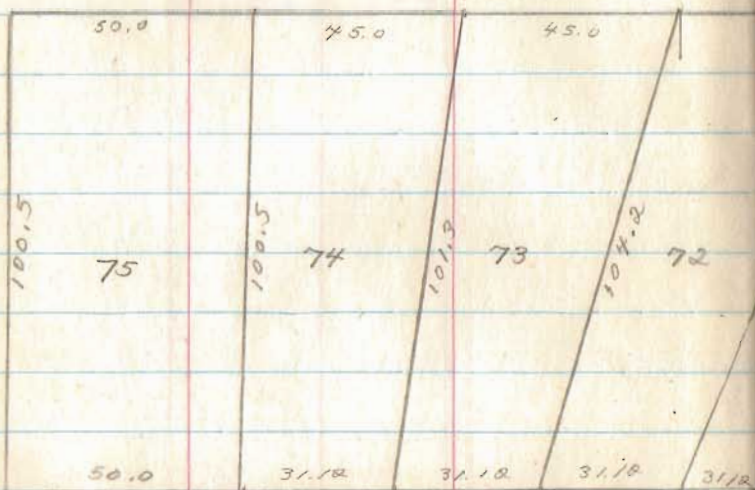


Th. Ad. #3

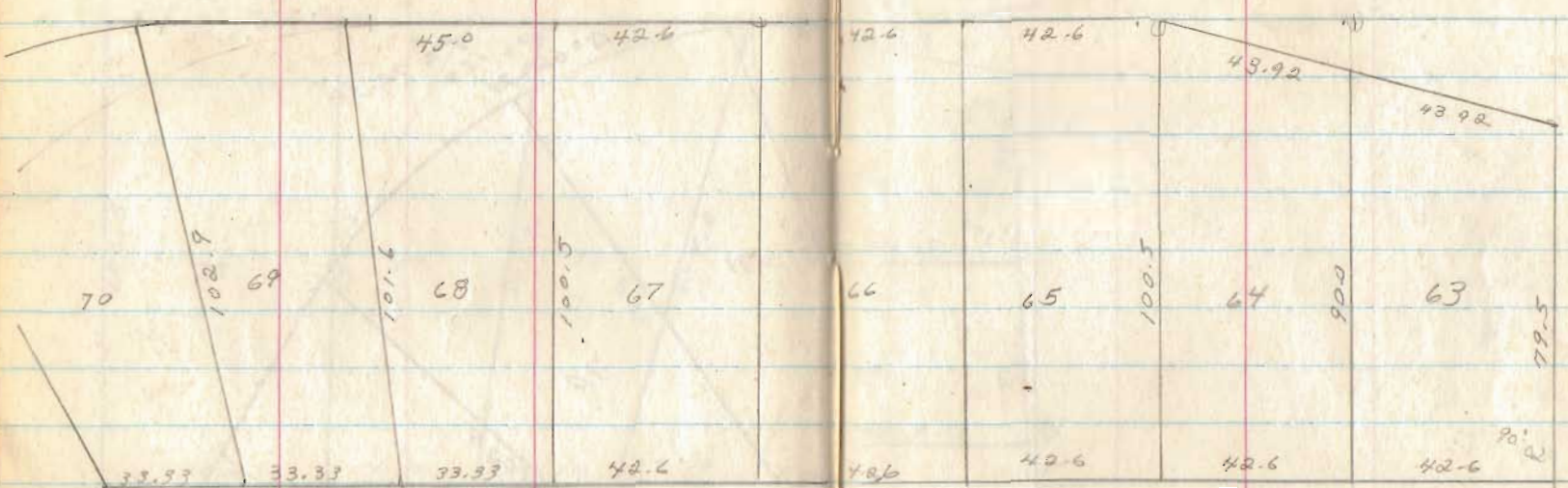


INDEXED ON MAP  
1966

INDEXED ON MAP  
1966

Th. Ad. 33

2



INDEXED ON MAP  
1966

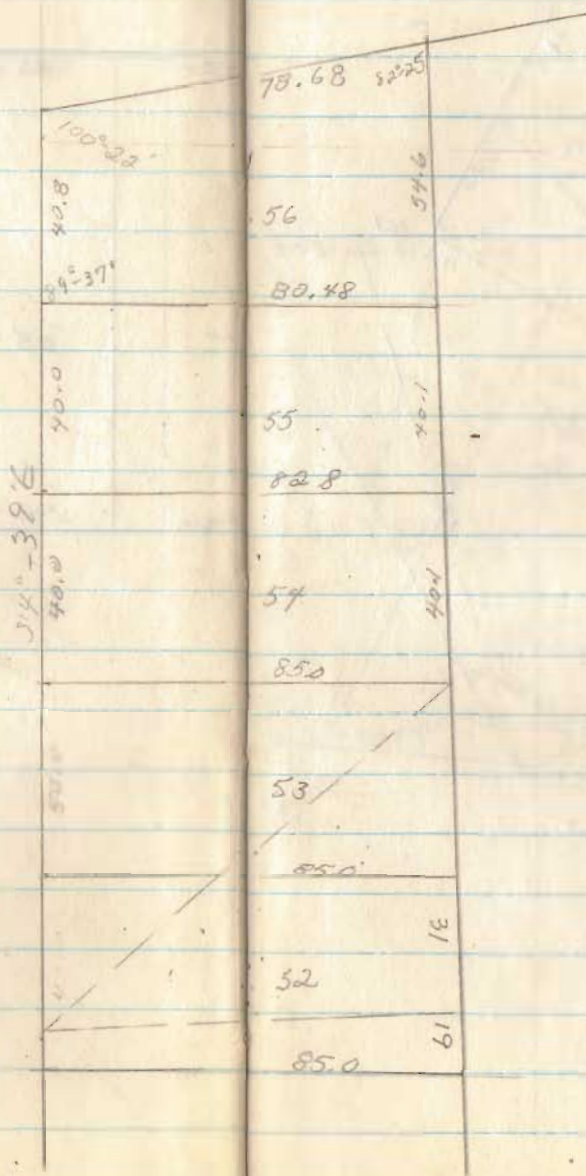
INDEXED ON MAP  
1966

INDEXED ON MAP



Th. Ad. #2

3



100°-22

4-9

95-53

84°-07

10-23

82-44

7°-167

INDEXED ON MAP

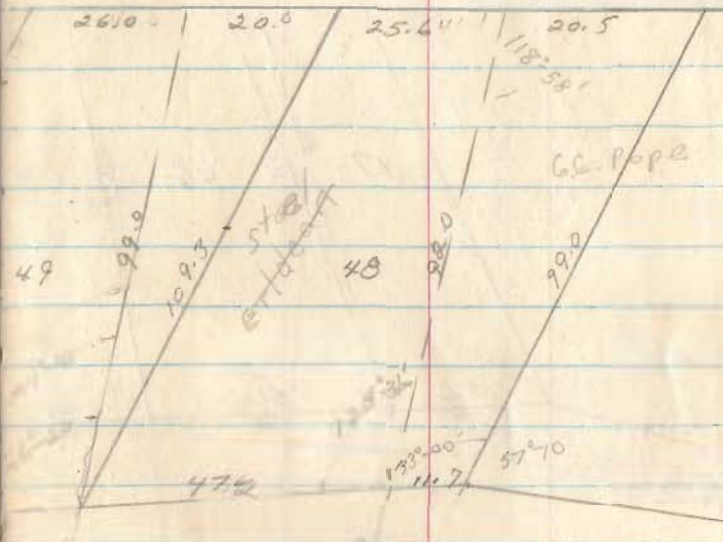
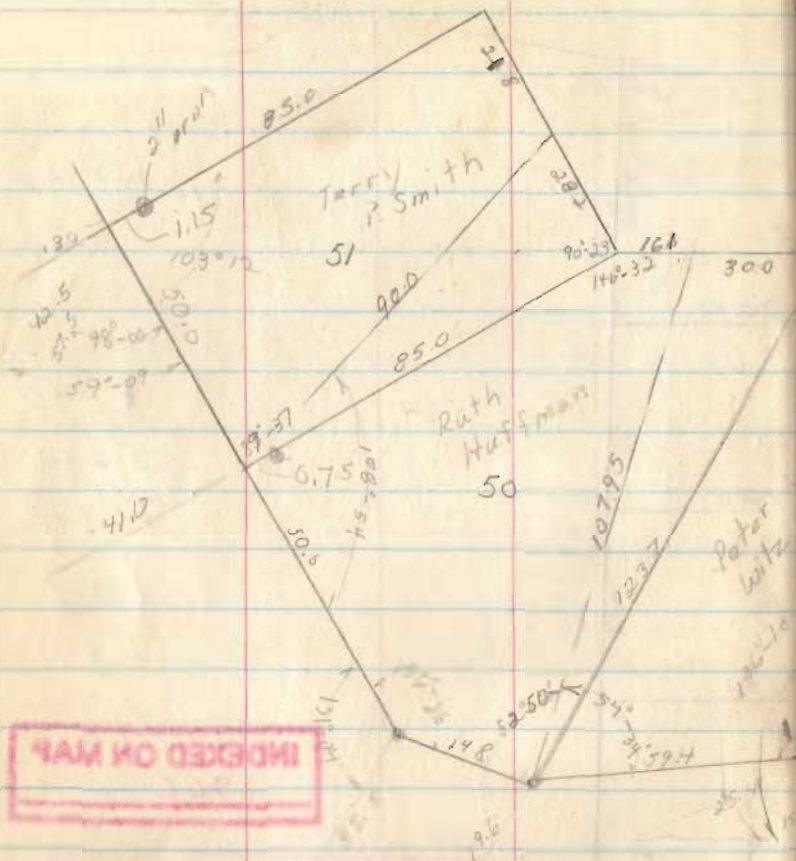
1966

INDEXED ON MAP

INDEXED ON MAP

T.H. Ad. #2

4

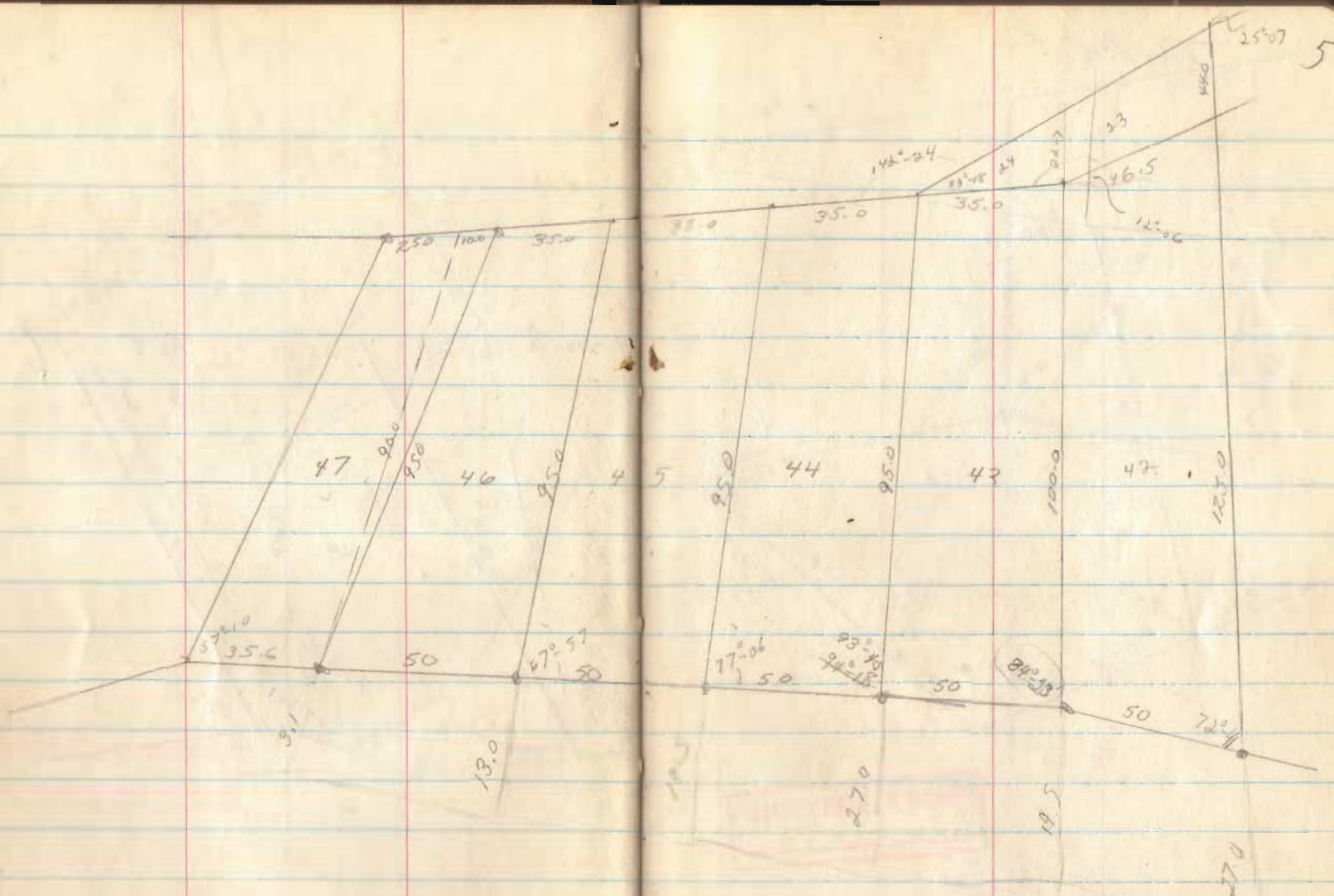


INDEXED ON MAP

INDEXED ON MAP  
1966

INDEXED ON MAP

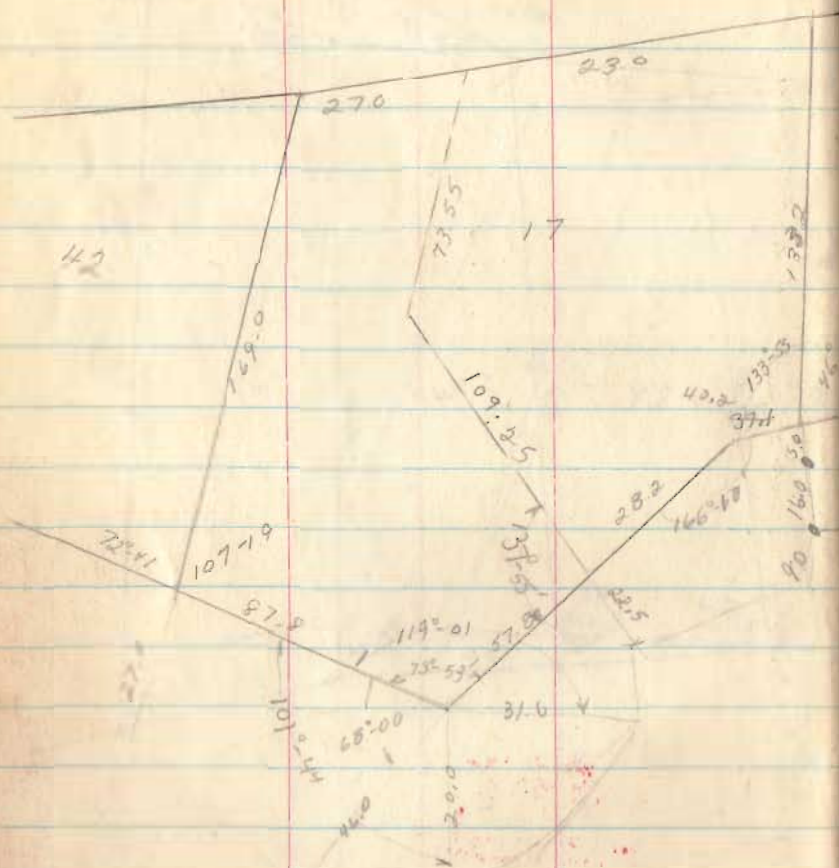




INDEXED ON MAP  
1966

INDEXED ON MAP  
1966

TA. Ad. #



6

$\theta = 252^{\circ} - 08'$   
51.1

$165^{\circ} 03'$   
 $\theta = 237^{\circ} - 11'$   
31.7 49.05

16

15

Th. #1

70.9  
~~75.0~~

$132^{\circ} 59'$

151.38

15.0

74.1  
~~78.1~~

105.04'

100

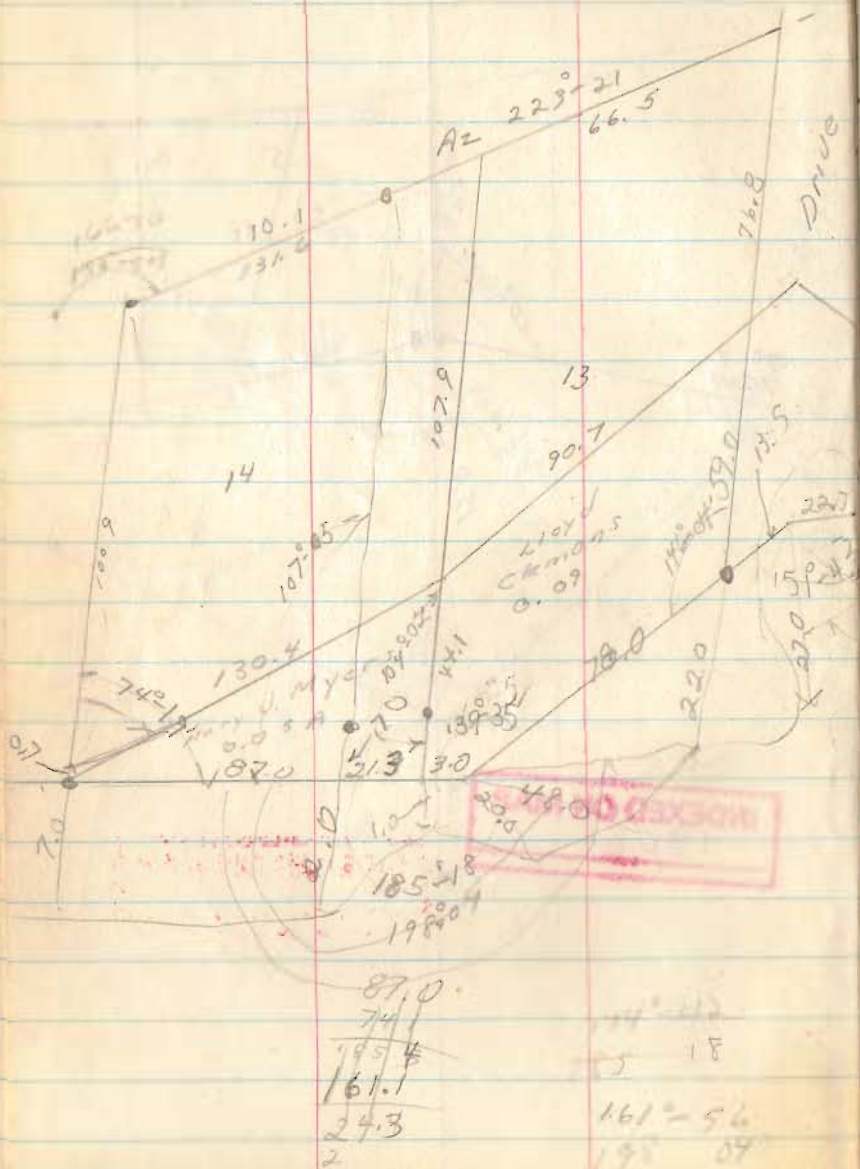
70

**INDEXED ON MAP**  
1966

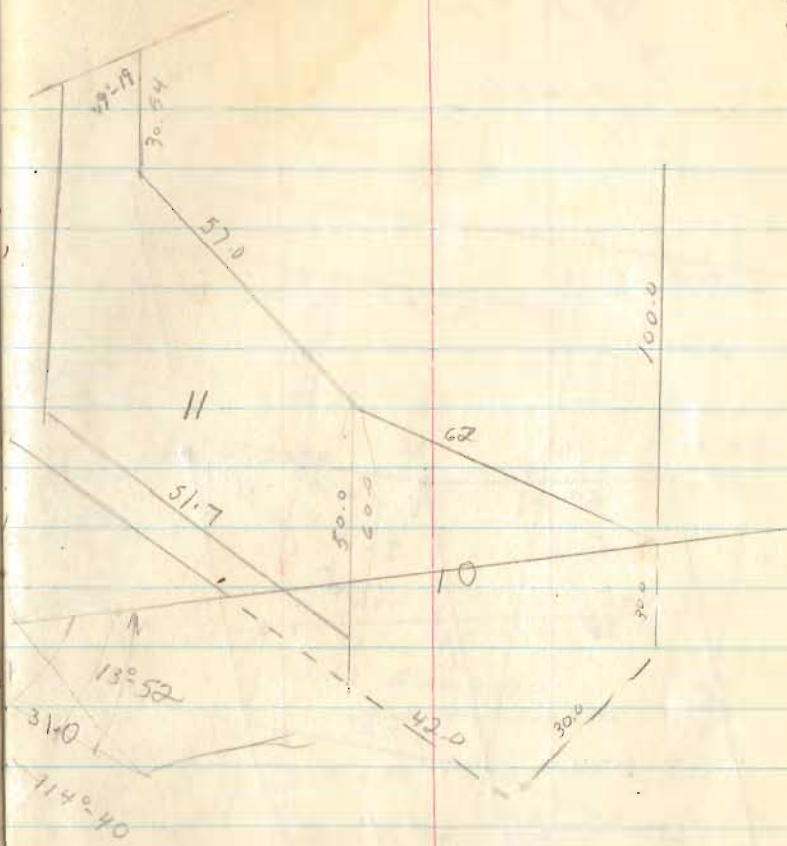
38.20



TA. #1



7

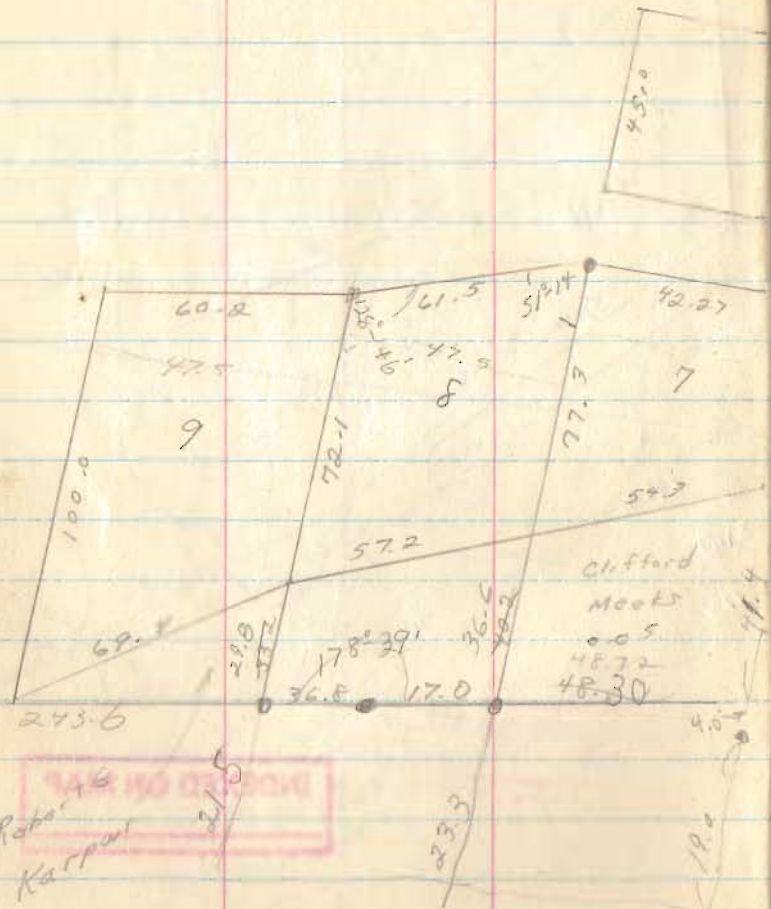


INDEXED ON MAP  
1966

135.8  
76.8  
165.7

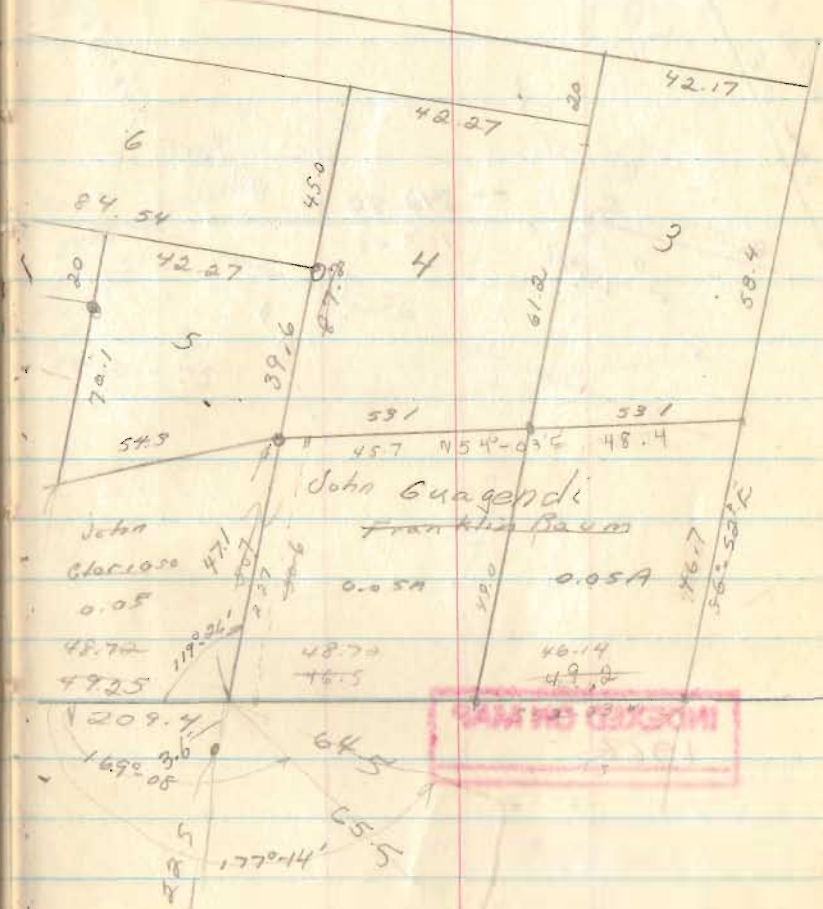
TA. 01

12276



INDEXED ON MAP  
1966  
Rata  
Karpaw

17. 8

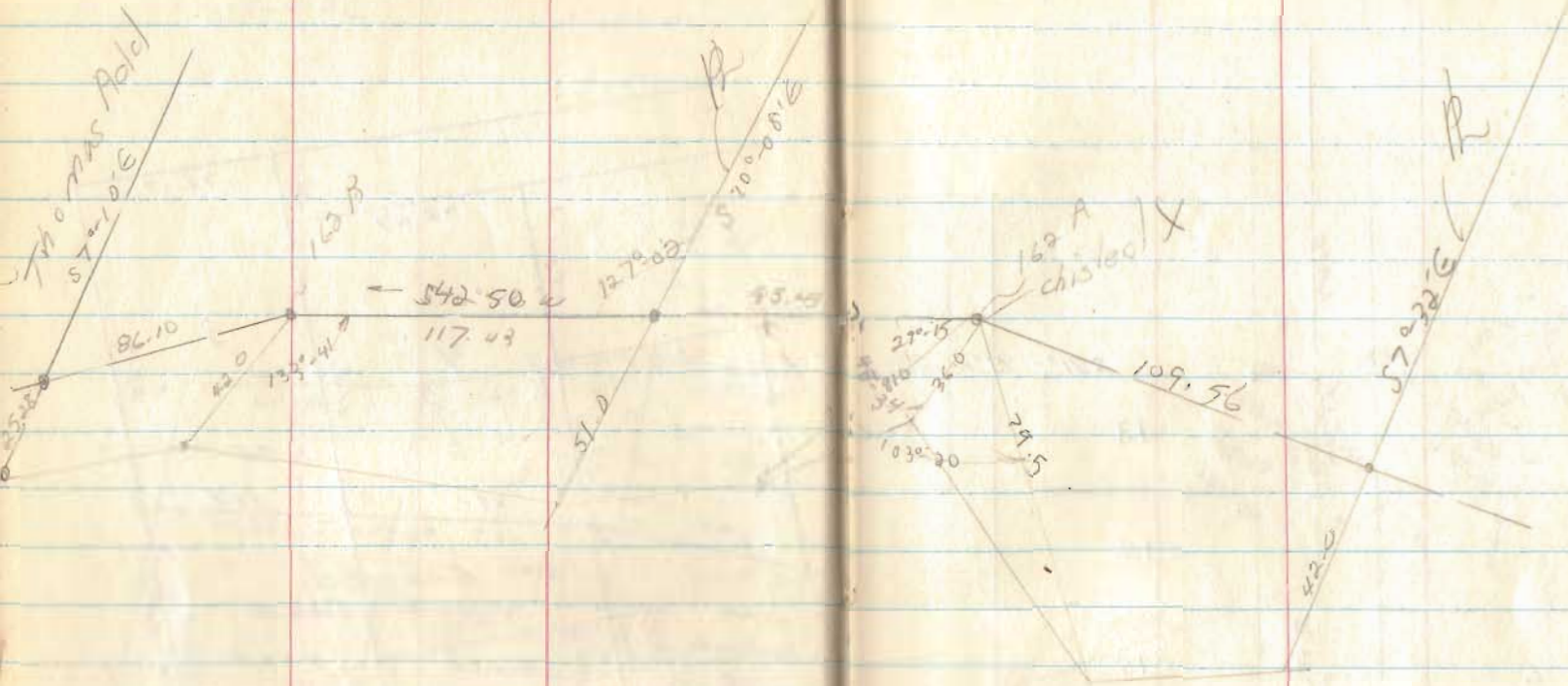


INDEXED ON MAP  
1966



EAST of T.H. AD

9

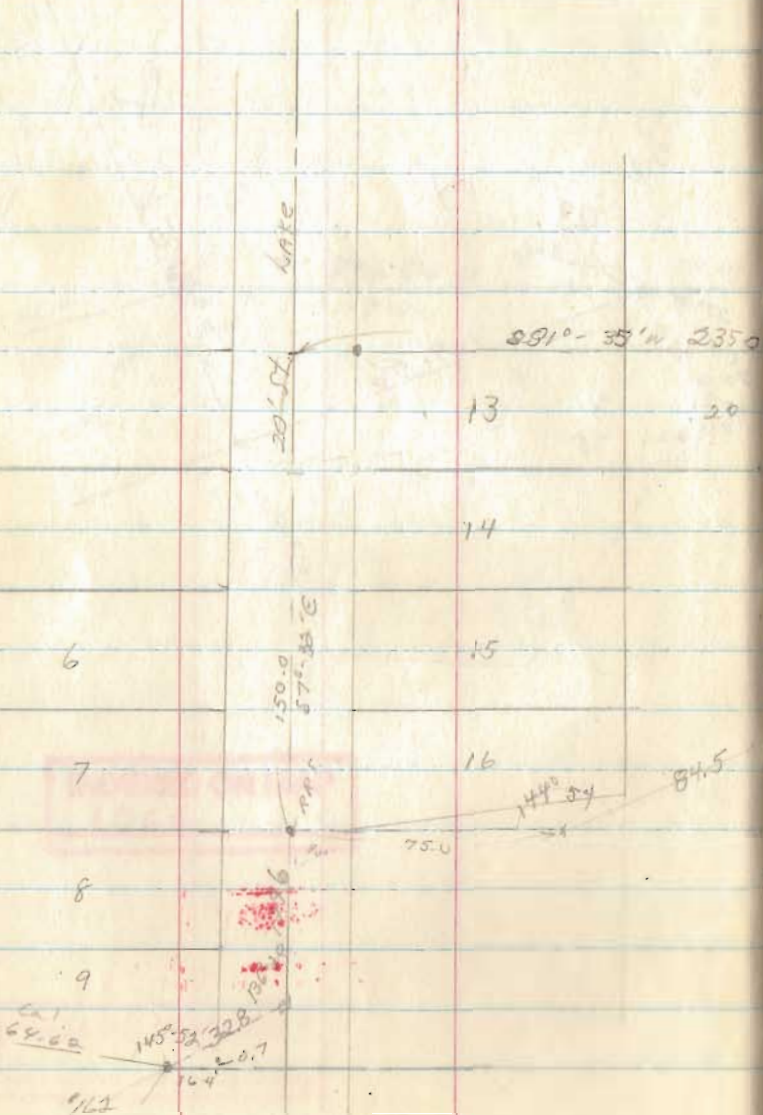


INDEXED ON MAP  
1966

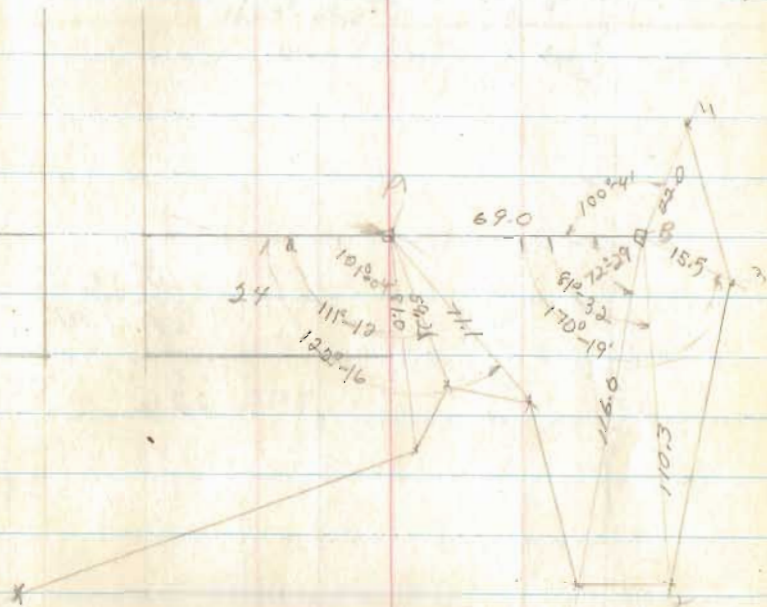
INDEXED ON MAP

INDEXED ON MAP

Cottage  
Site Allot



10



**INDEXED ON MAP**  
4164

INDEXED ON MAP

81-35  
73-2  
89-01



WISE  
ALLOT.

226

227

N 100° 37' E  
145.40

228

N 130° 35' E  
123.88

S 51° 20' E  
125.0

INDEXED ON MAP

50.0

S 81° 15' W

47.45

INDEXED ON MAP  
4164

N 50° 50' W  
85.6

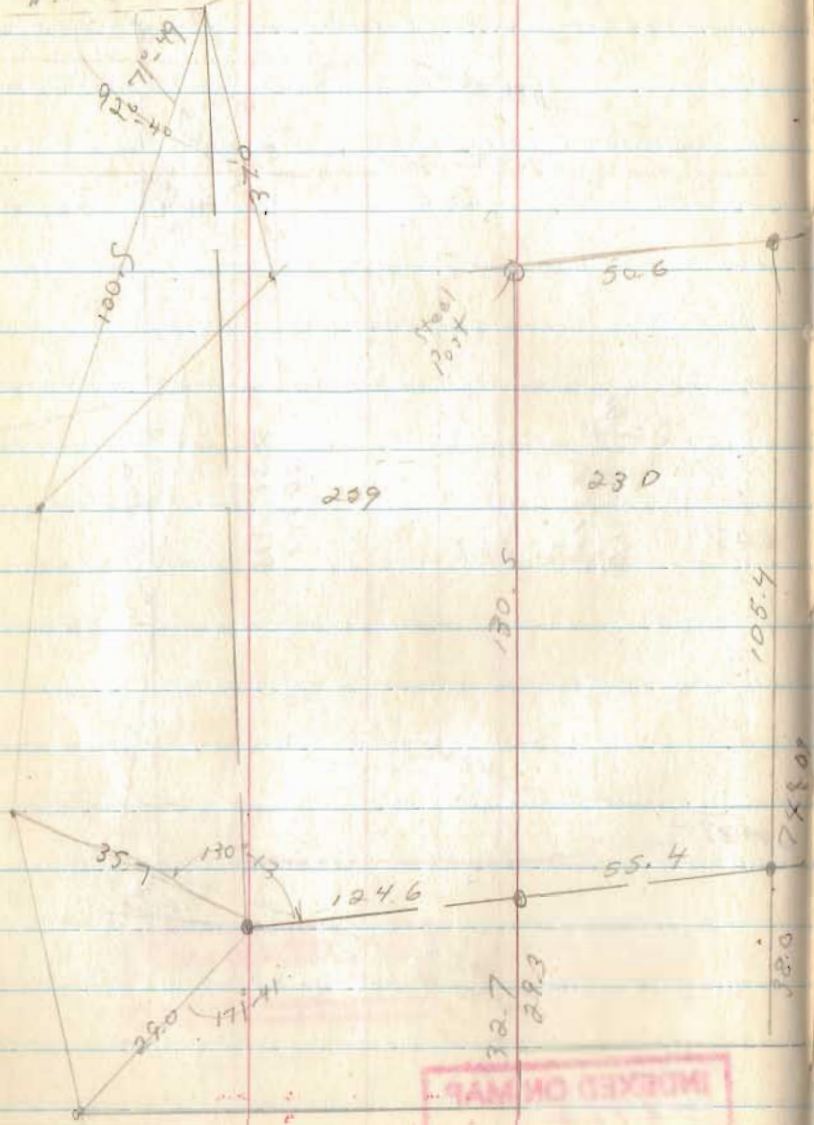
S 64° 39' W

42.72

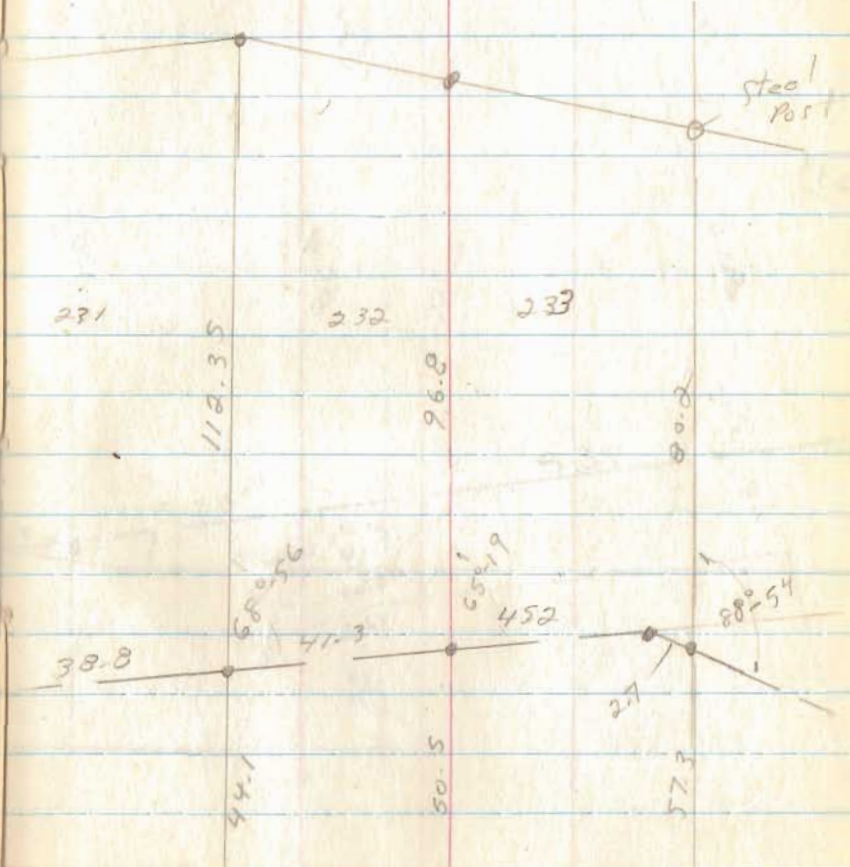


N 71° 06' E

160 D

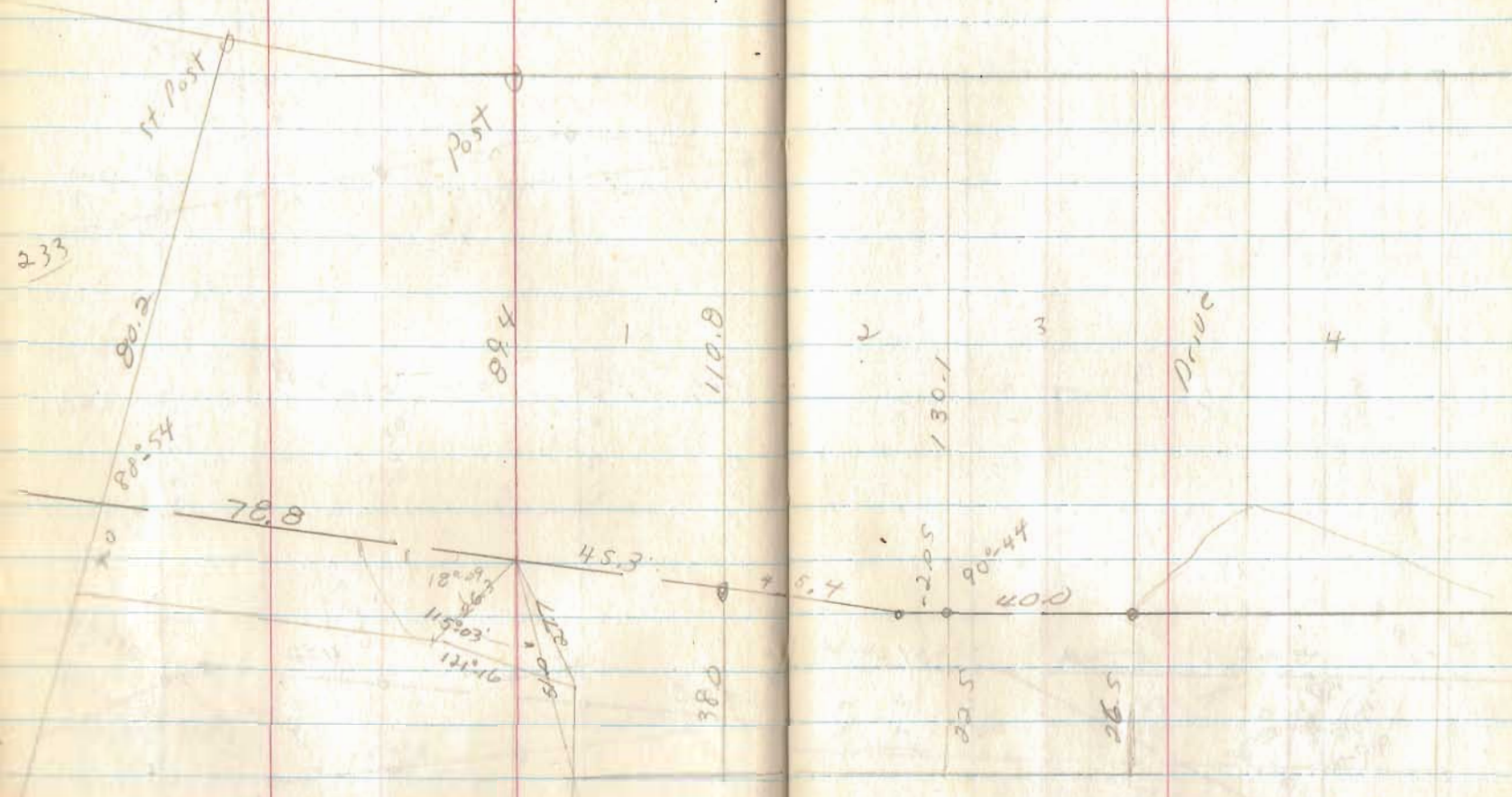


INDEXED ON MAP  
4164



INDEXED ON MAP  
4164





INDEXED ON MAP

INDEXED ON MAP  
4164

5

6

7

8

9

10

11

11.5

30.5

42

51.0

42.0

238

11.5  
180  
90  
143  
80

130

42

31

13

35

672

78005

73.61

500

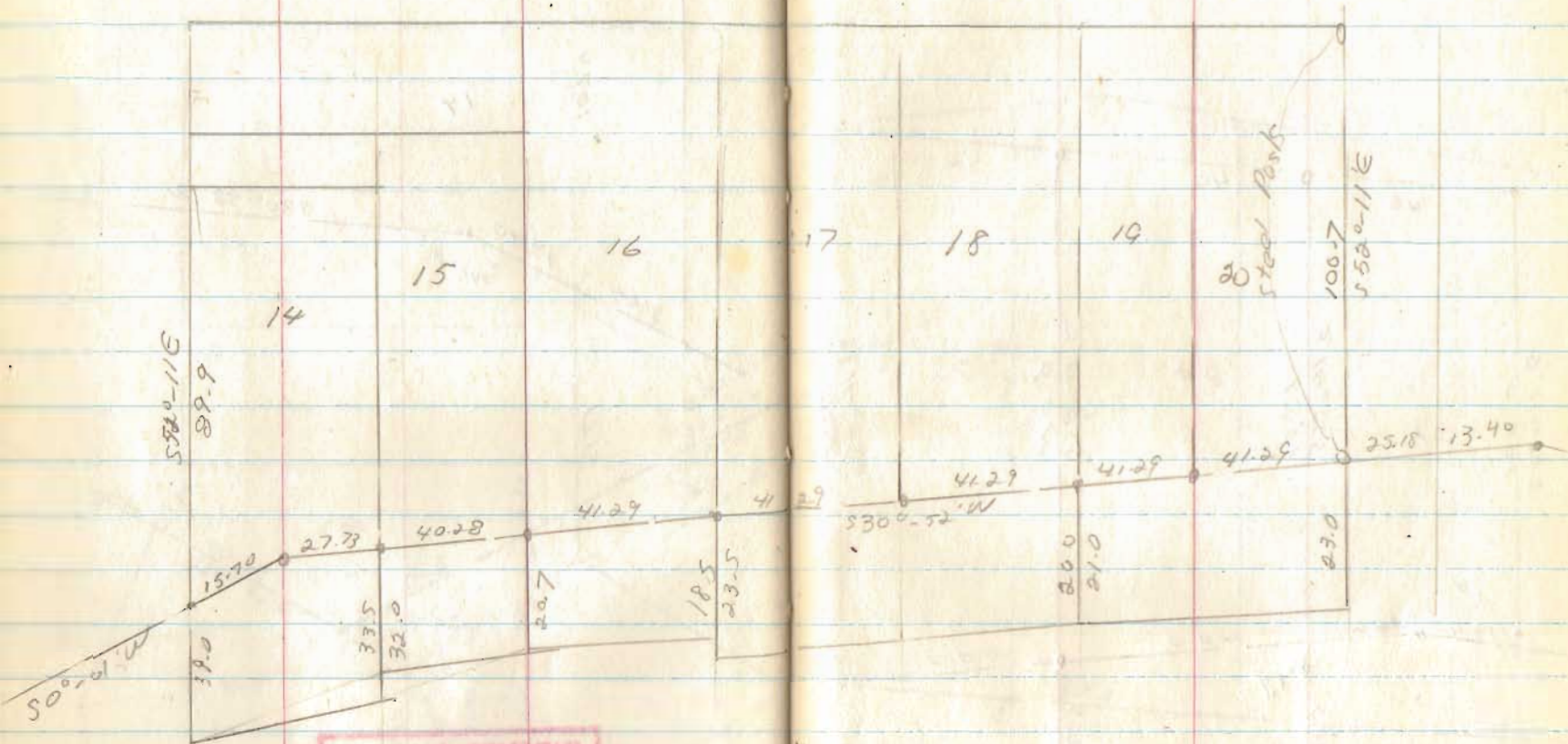
1050

INDEXED ON MAP

INDEXED ON MAP  
416A



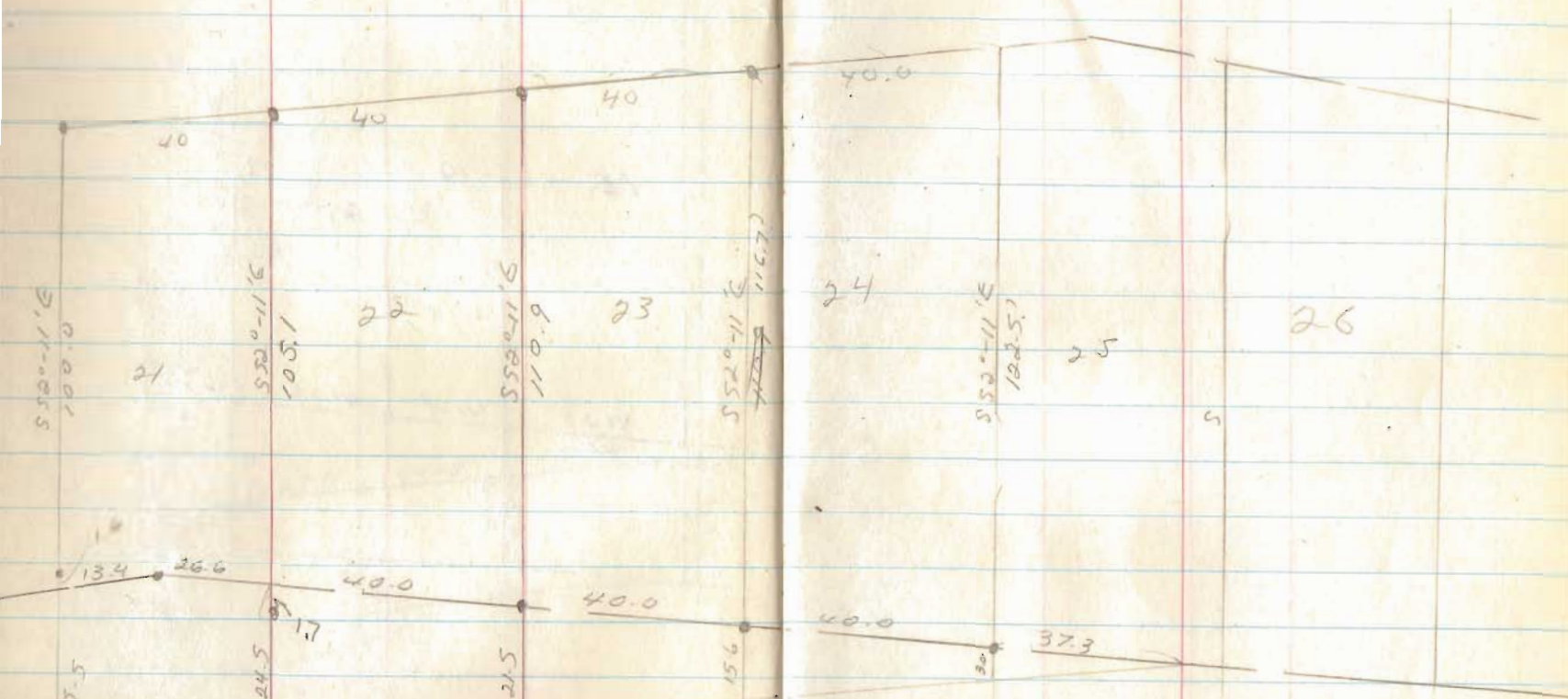




INDEXED ON MAP

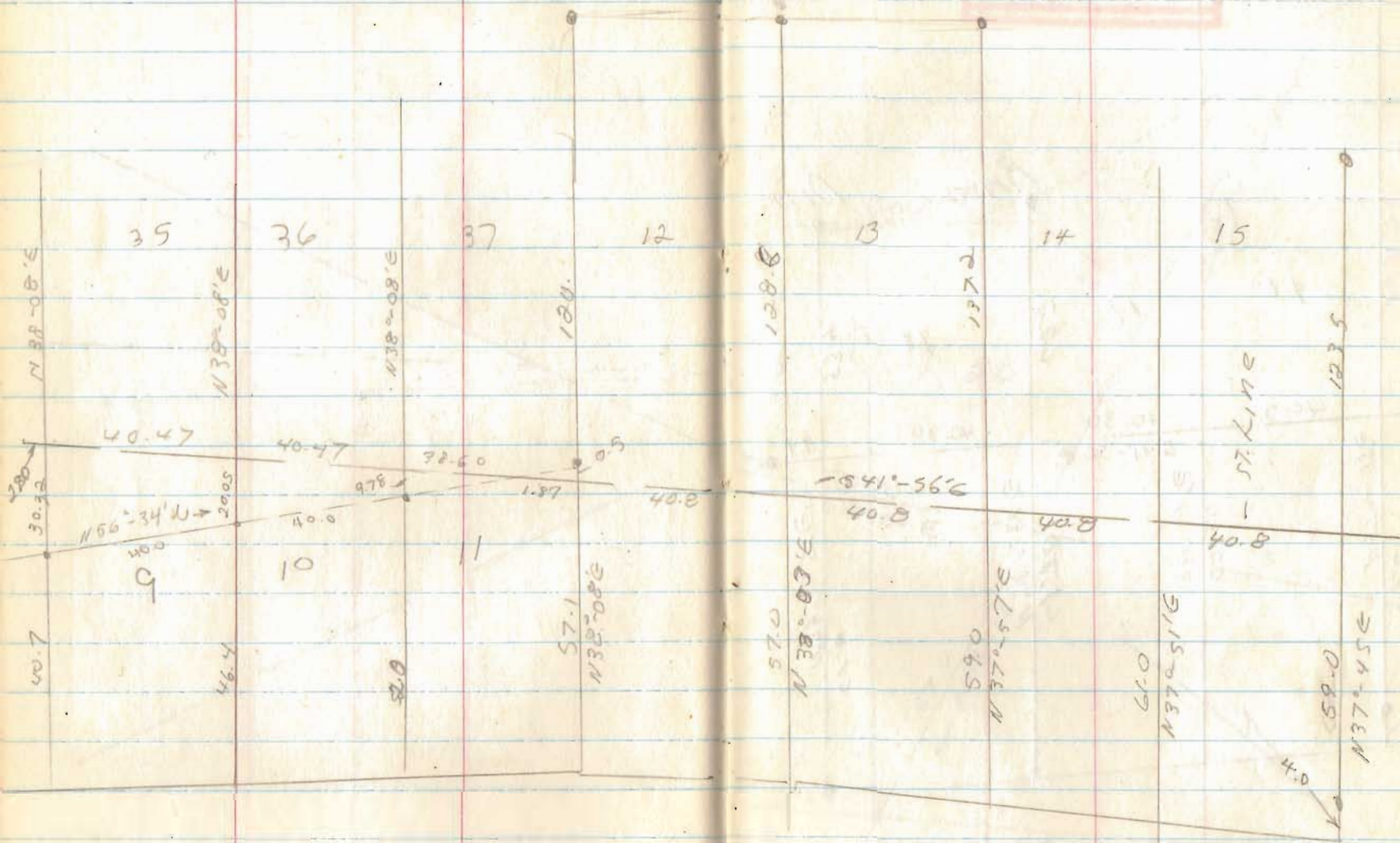
INDEXED ON MAP  
4164





INDEXED ON MAP  
4164

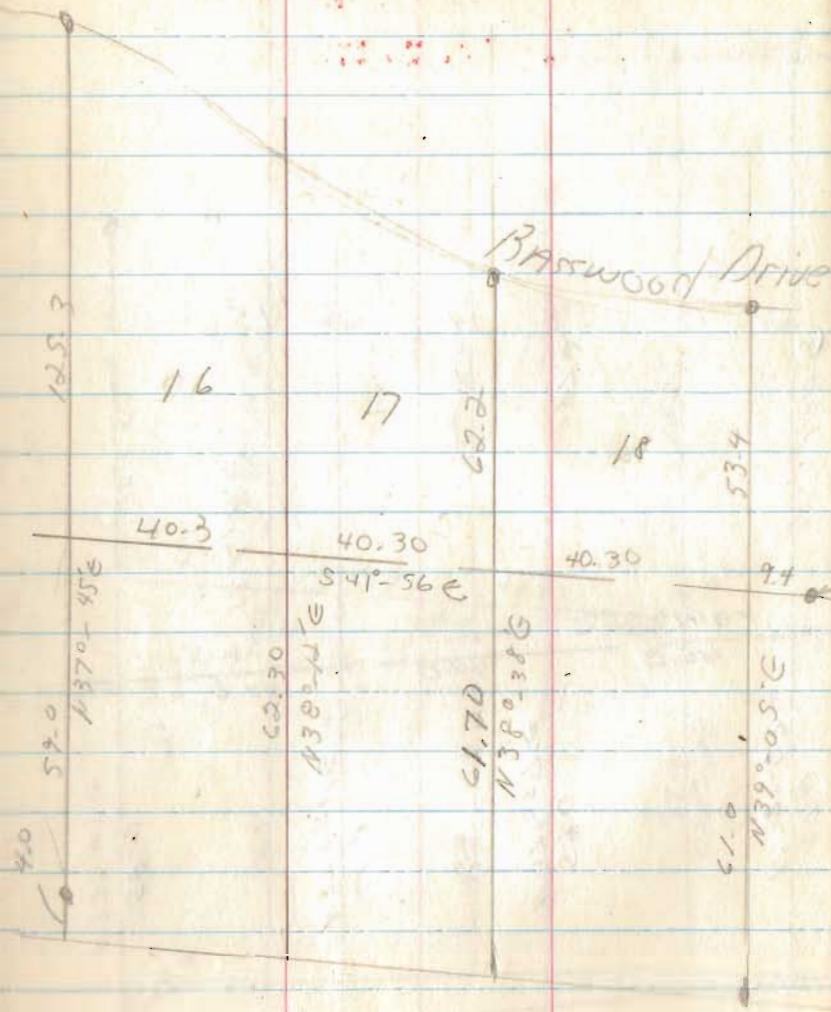
INDEXED ON MAP  
4164



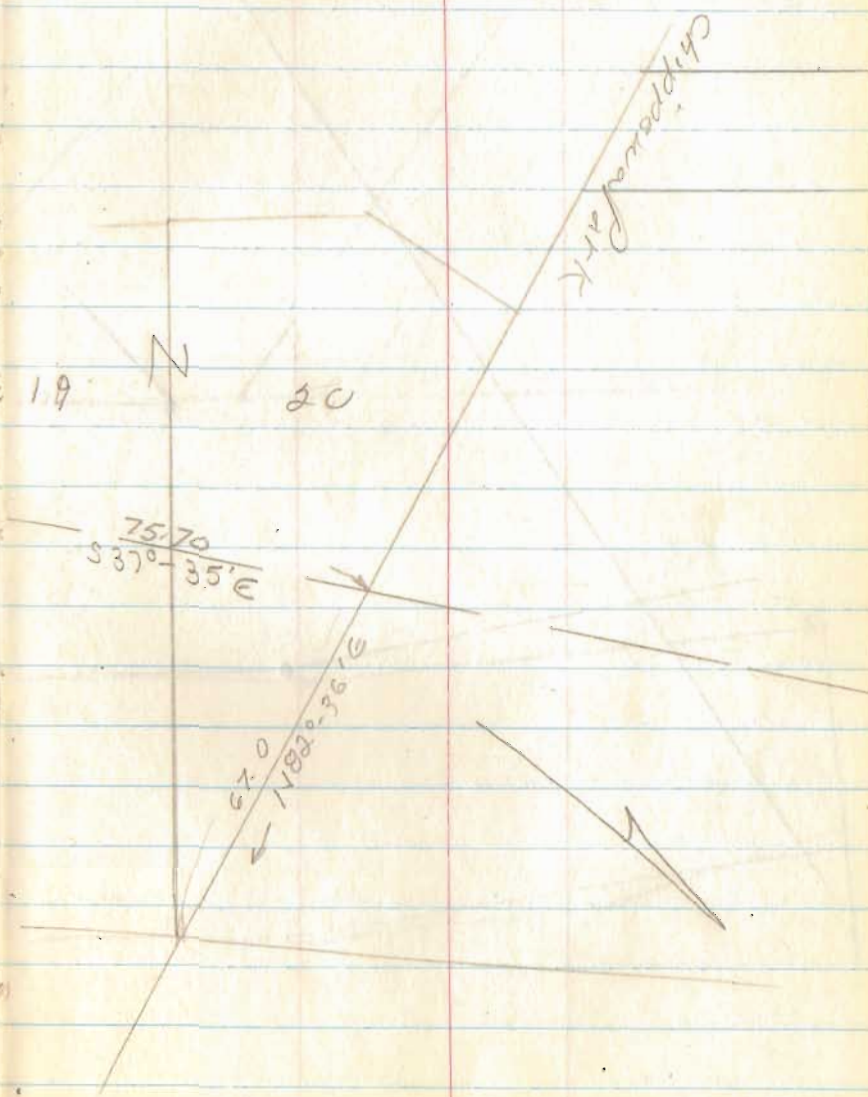


INDEXED ON MAP  
4164

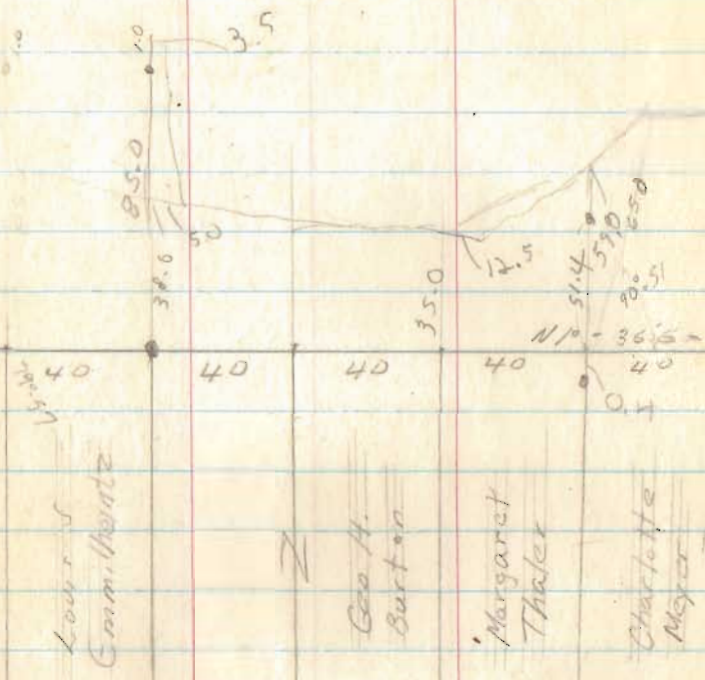
Reese



INDEXED ON MAP

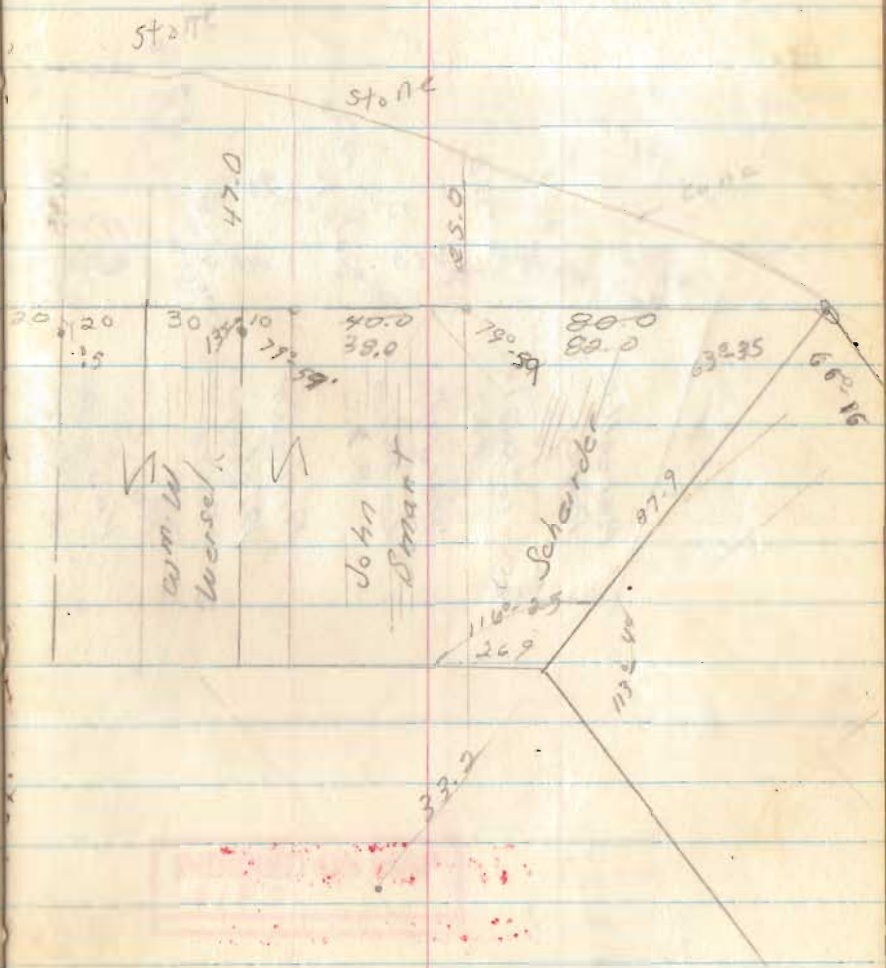


# Waterbury



INDEXED ON MAP  
4180

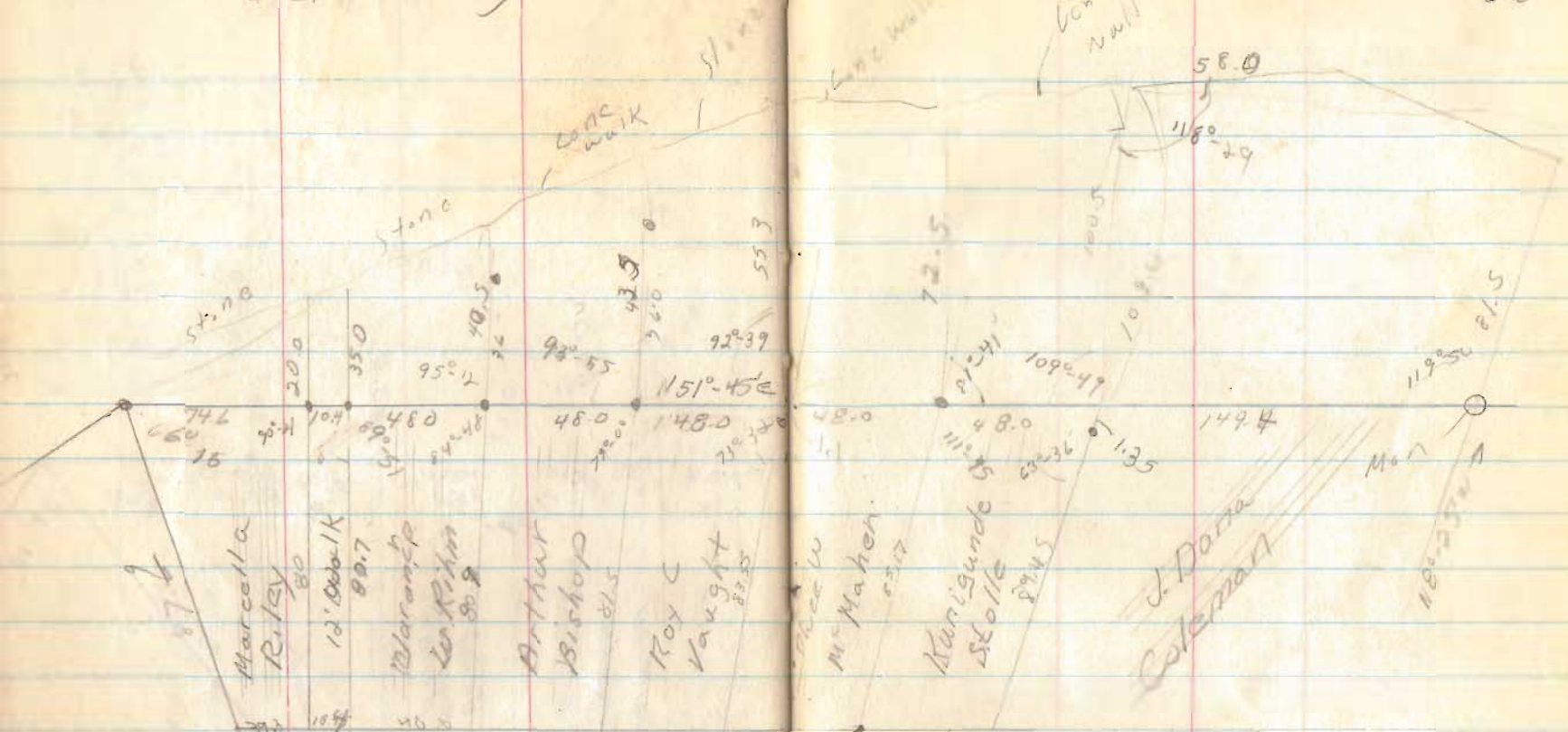
25  
66.16  
63.05  
29.51



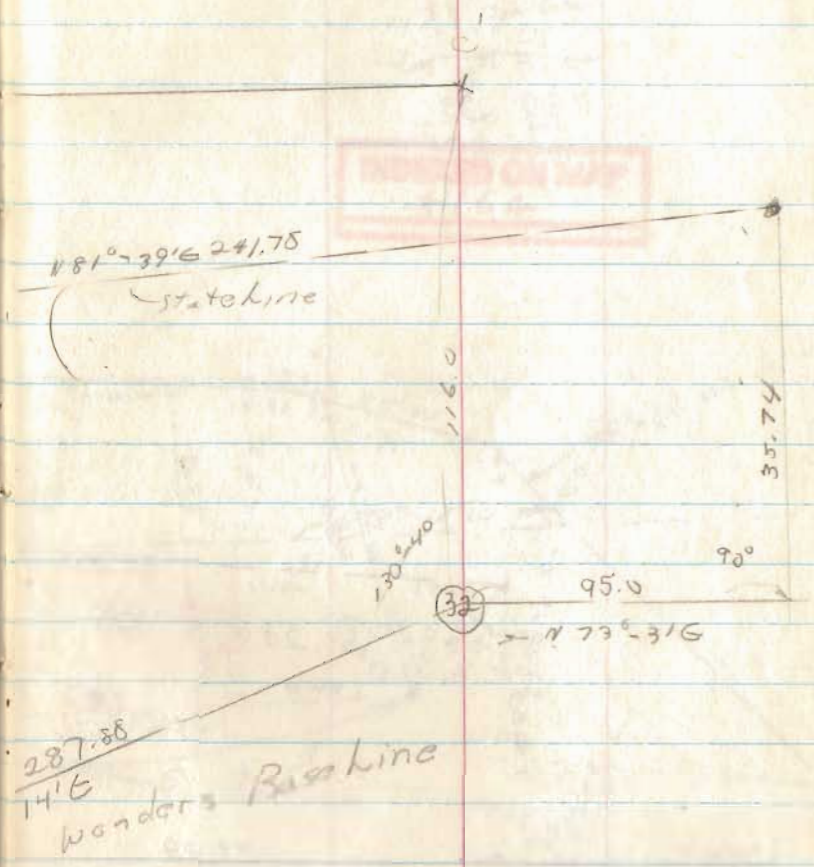
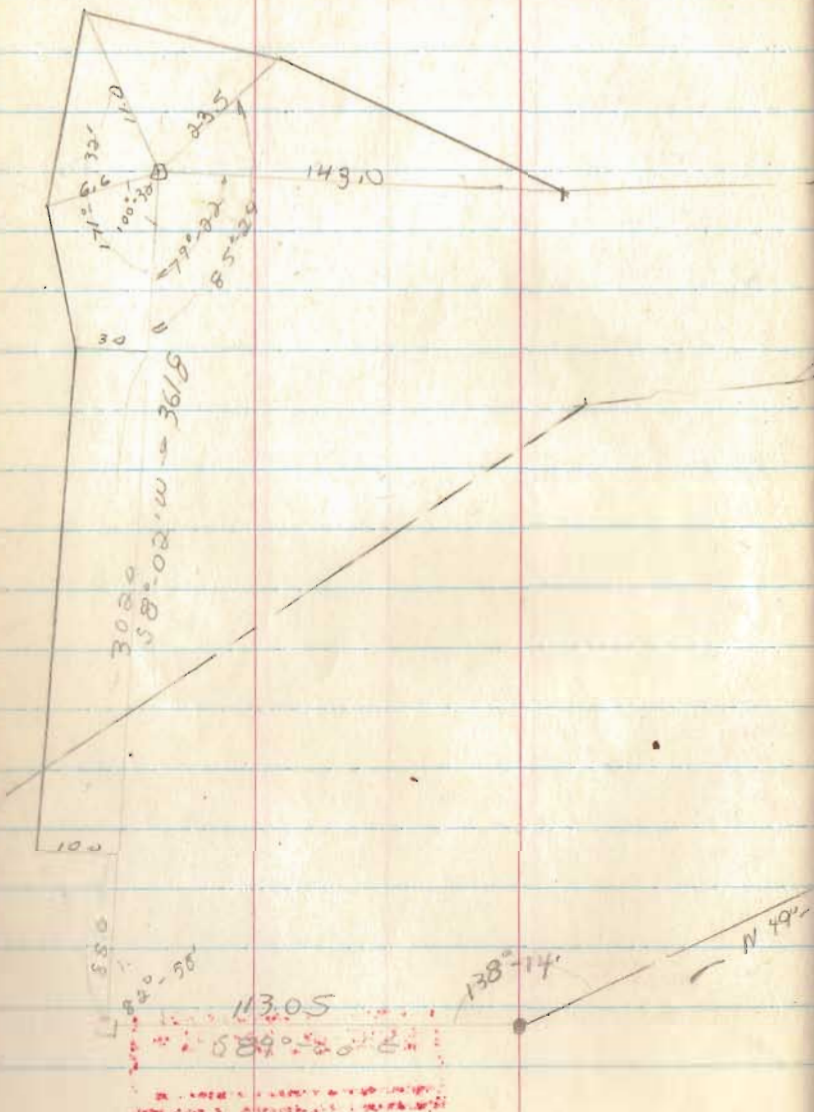


# Waterbury

26



INDEXED ON MAP  
 4180



INDEXED ON MAP

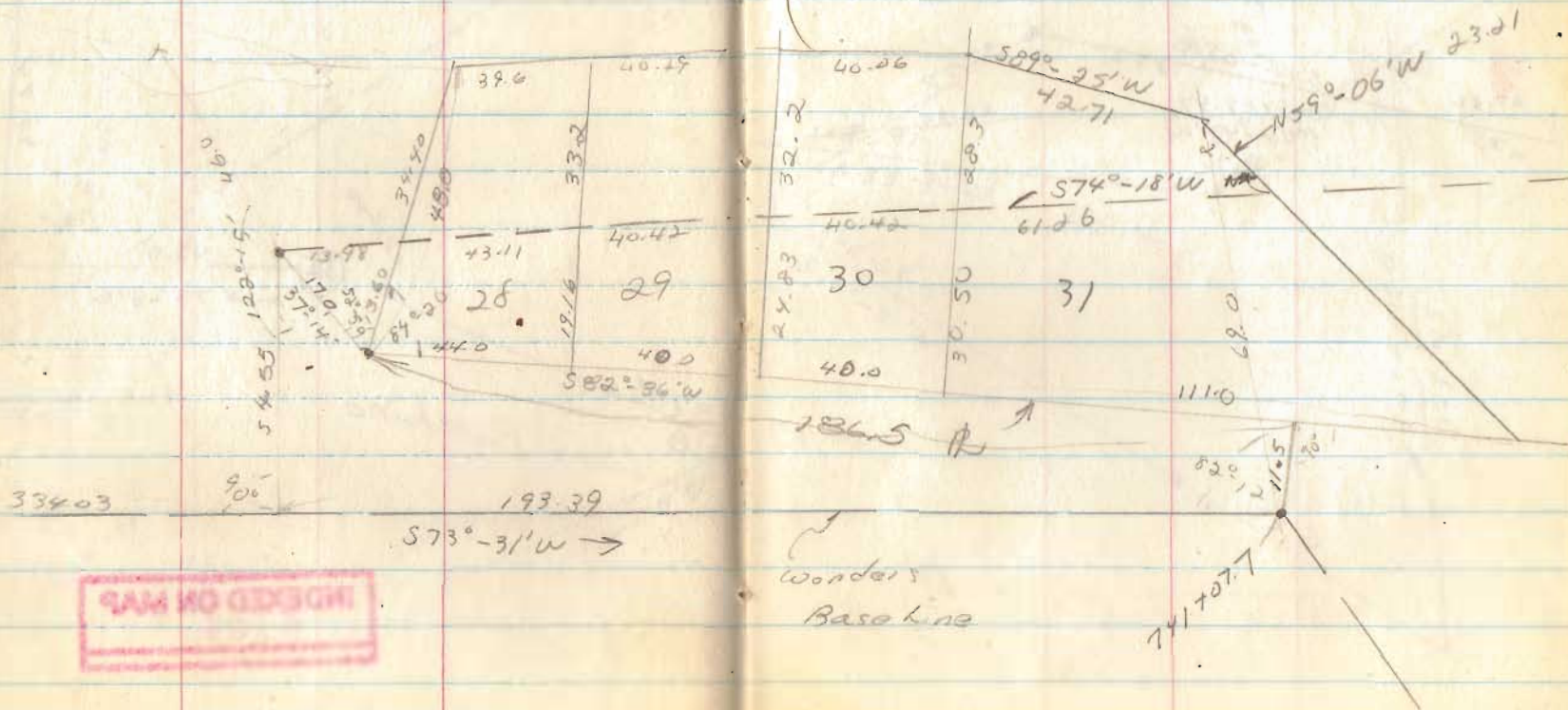
INDEXED ON MAP  
4164



90  
 $37^{\circ}-14'$   
 $222-41$   
 90  
 $529-110$   
 $439-55$   
 $100-05$

$53^{\circ}-59'$   
 $84^{\circ}-20'$   
 $137-19$   
 $222-41$

INDEXED ON MAP  
 4164

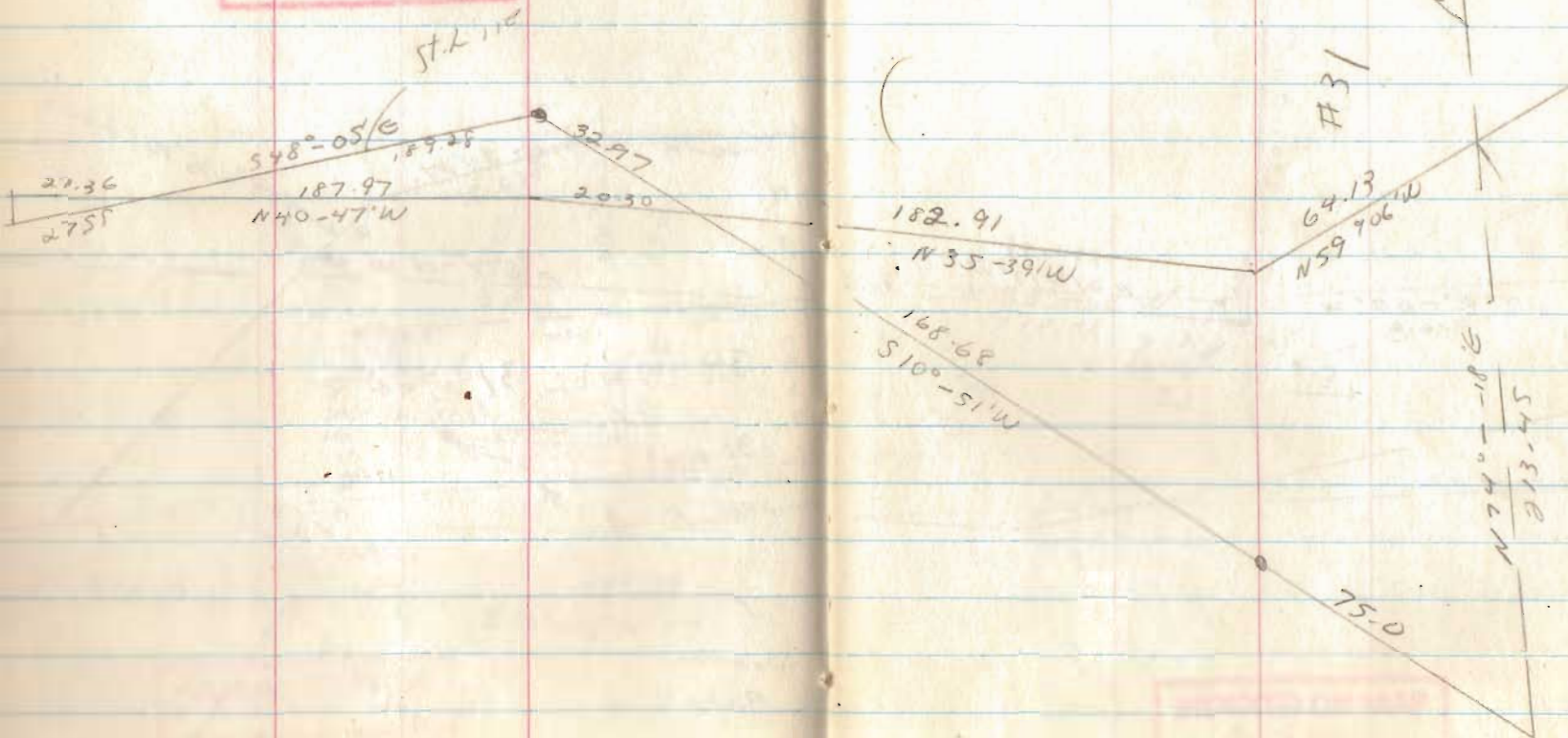


INDEXED ON MAP

INDEXED ON MAP

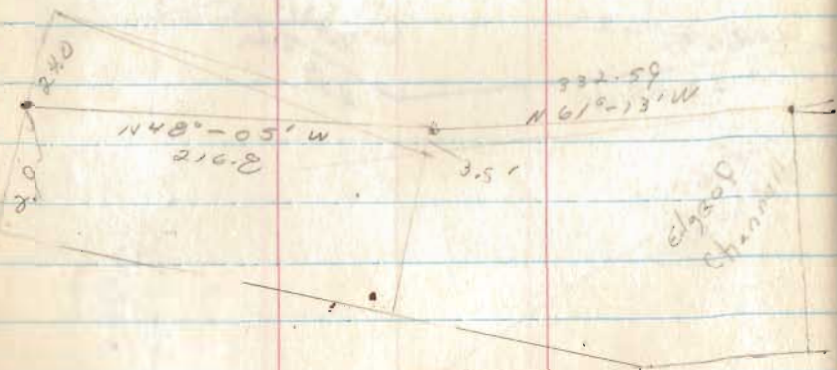
4164

INDEXED ON MAP



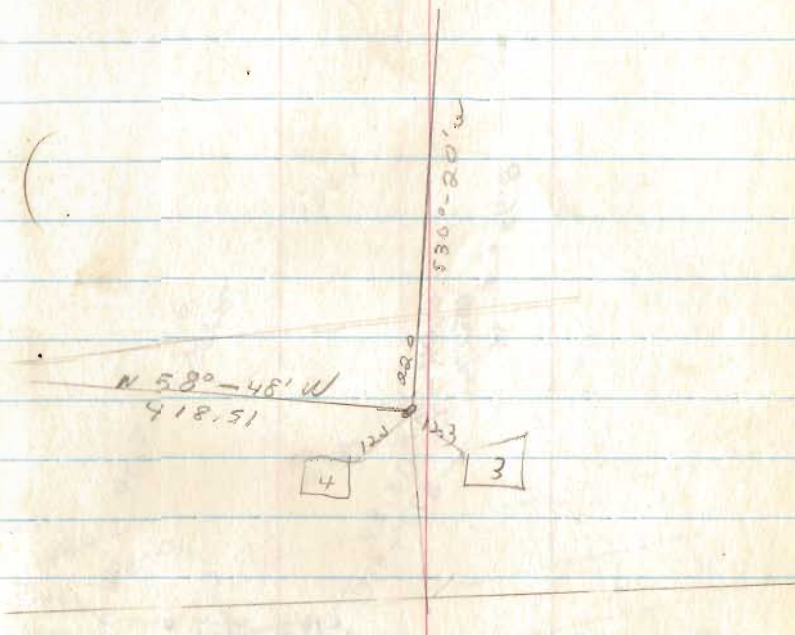


INDEXED ON MAP



Barnes

32



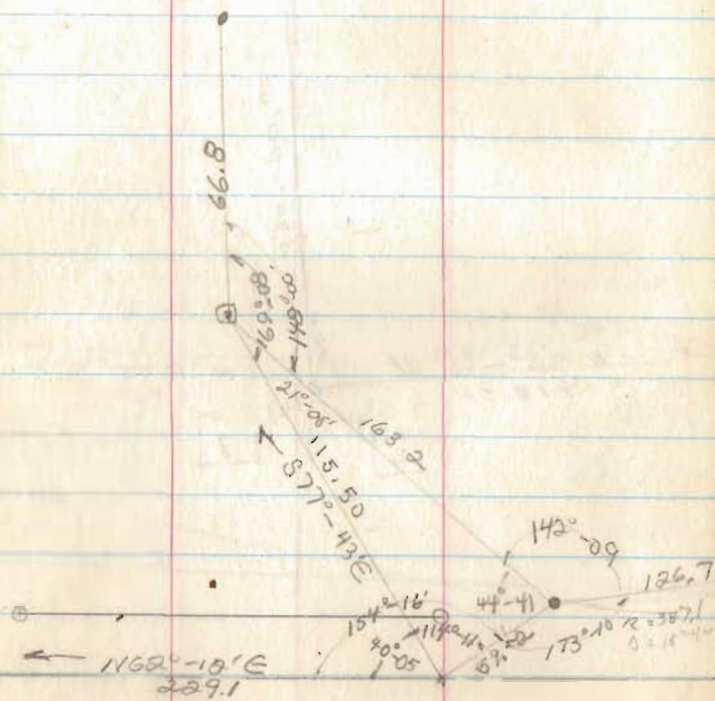
INDEXED ON MAP

4164

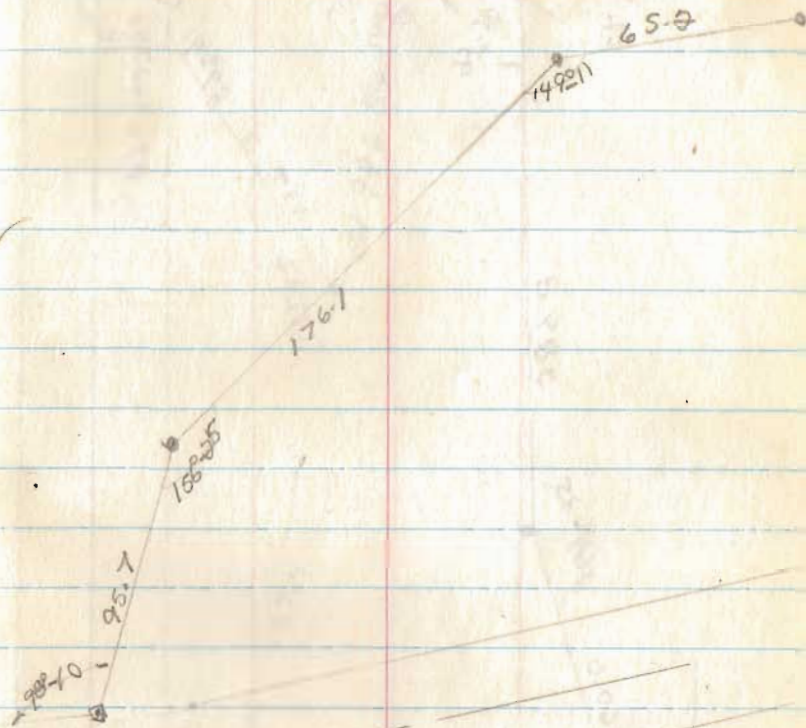
Lake-Ridge Is.

Feb. 12  
Mar. 5, 1966

33



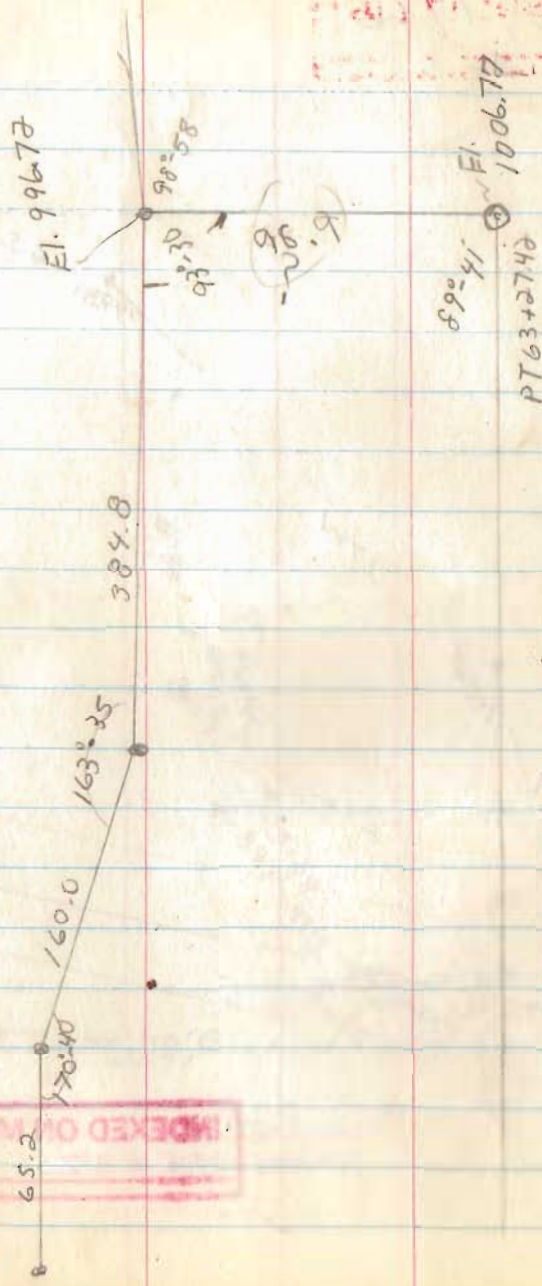
RT. 73+75.6  
Ch. 1000.37



INDEXED ON MAP  
6832

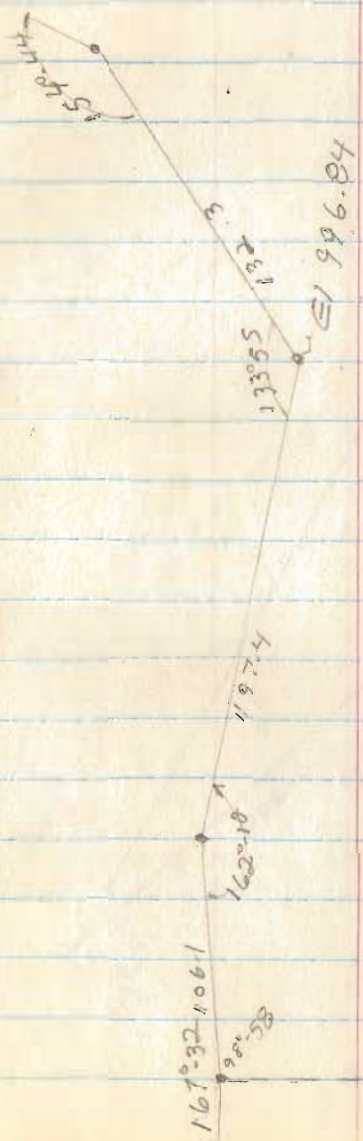


INDEXED ON MAP



INDEXED ON MAP

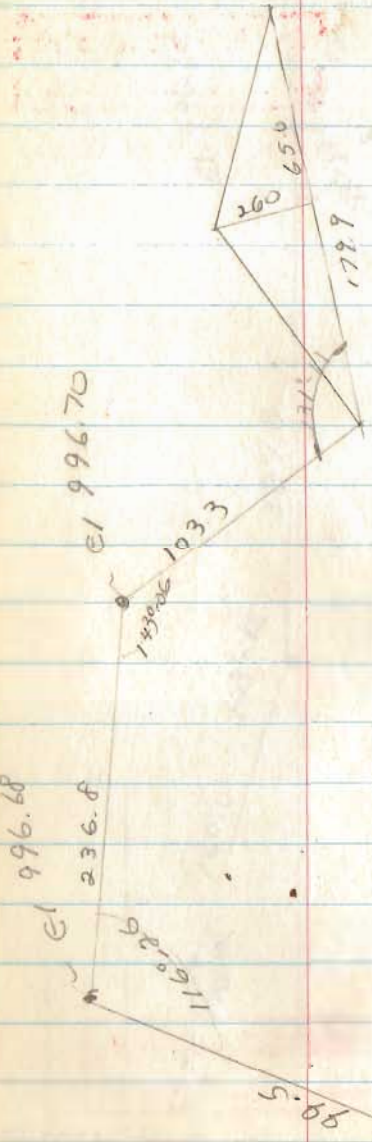
INDEXED ON MAP  
6832



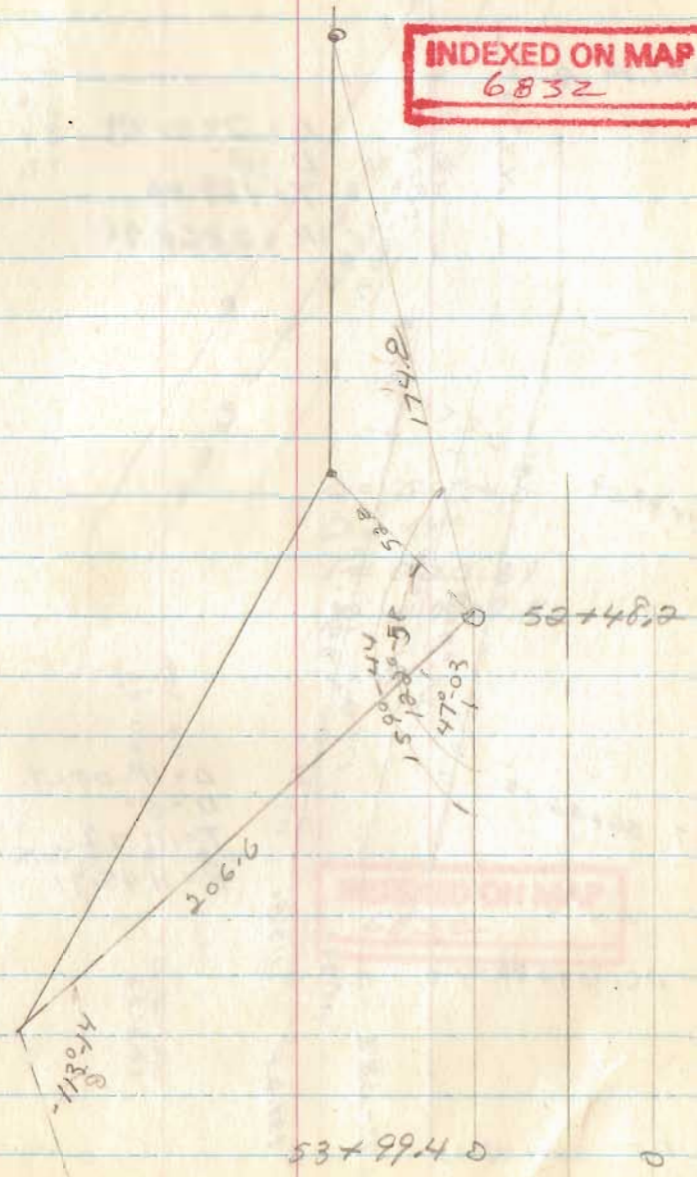
INDEXED ON MAP

PT. 63+027.4

INDEXED ON MAP

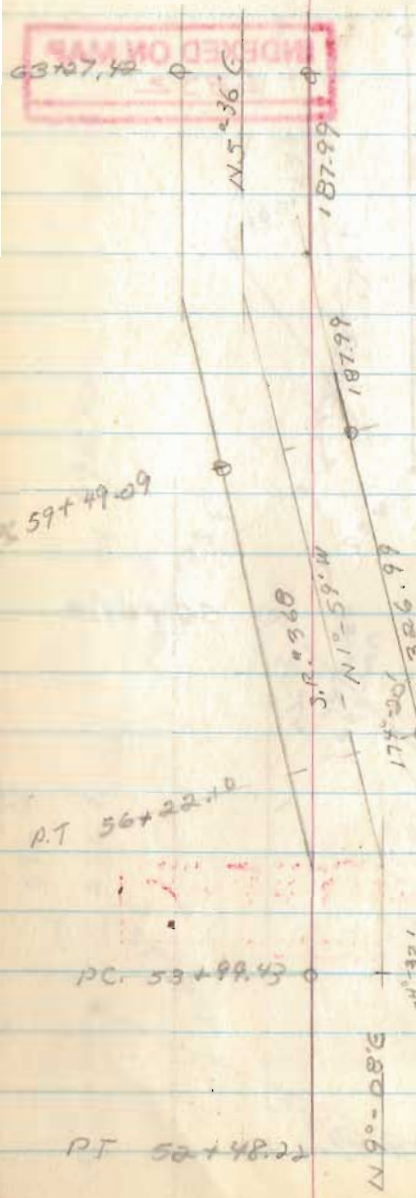


INDEXED ON MAP  
6832





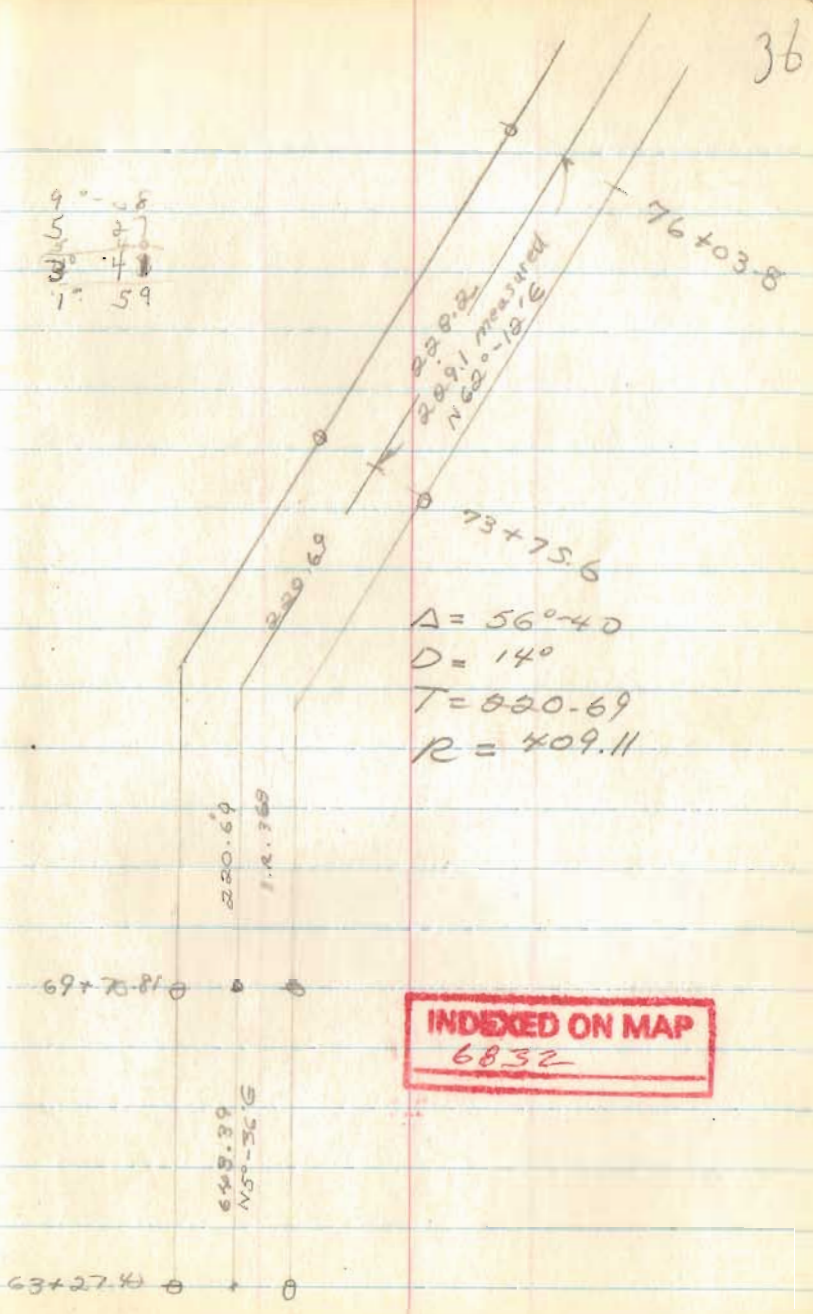
INDEXED ON MAP  
63+27.4



$\Delta = 70^{\circ} 34' RT$   
 $D = 2'$   
 $T = 189.46$   
 $R = 2864.78$

$\Delta = 11^{\circ} 08' LT$   
 $D = 5'$   
 $T = 111.72$   
 $R = 1145.91$

236  
 236  
 472  
 59



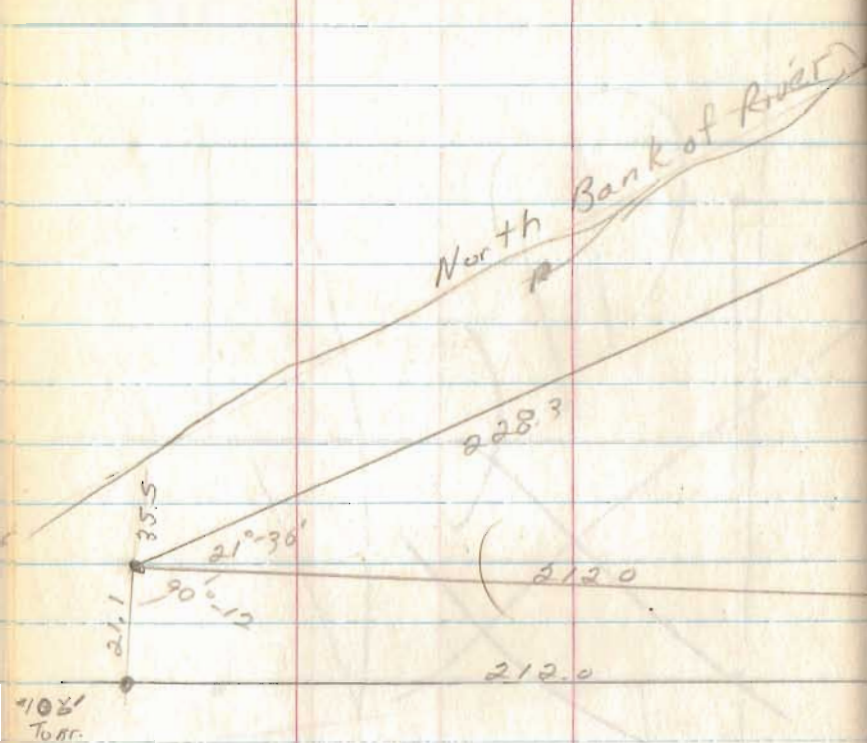
$\Delta = 56^{\circ} 40'$   
 $D = 14'$   
 $T = 820.69$   
 $R = 409.11$

INDEXED ON MAP  
6832

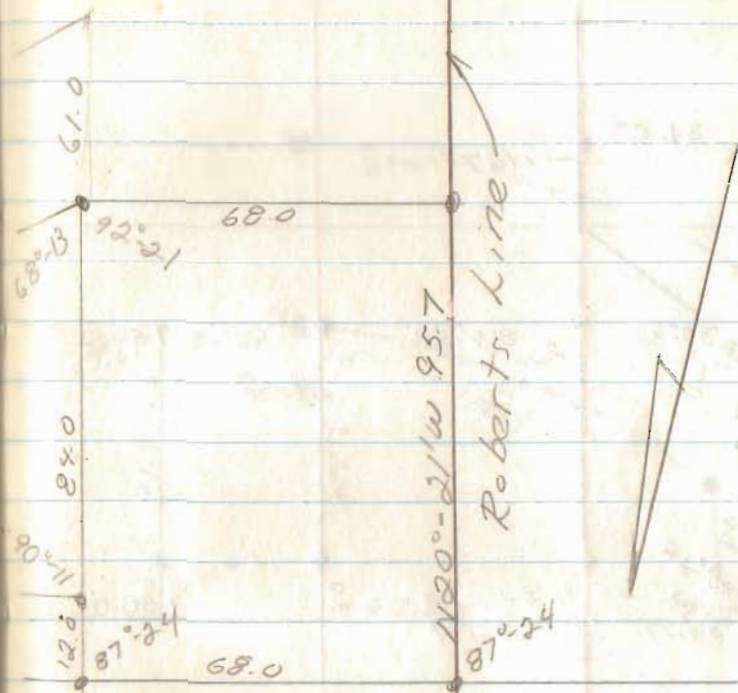
New Bulkhead

June 1944

40



State Route <sup>ms</sup> 366



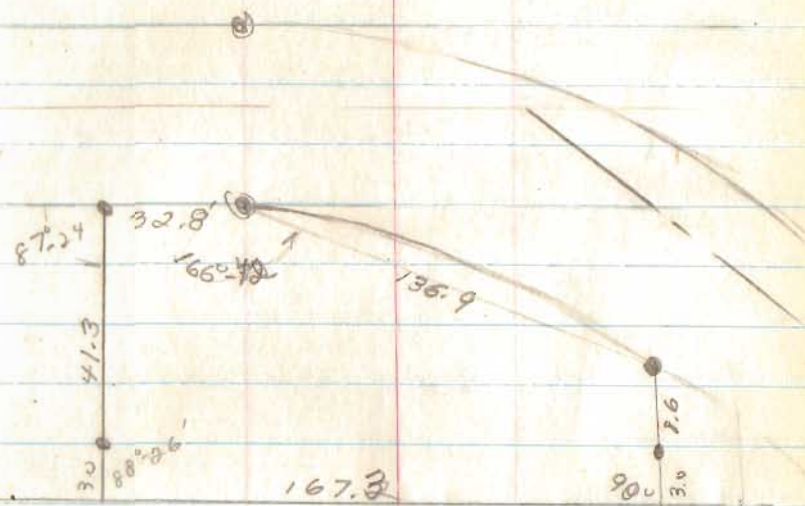
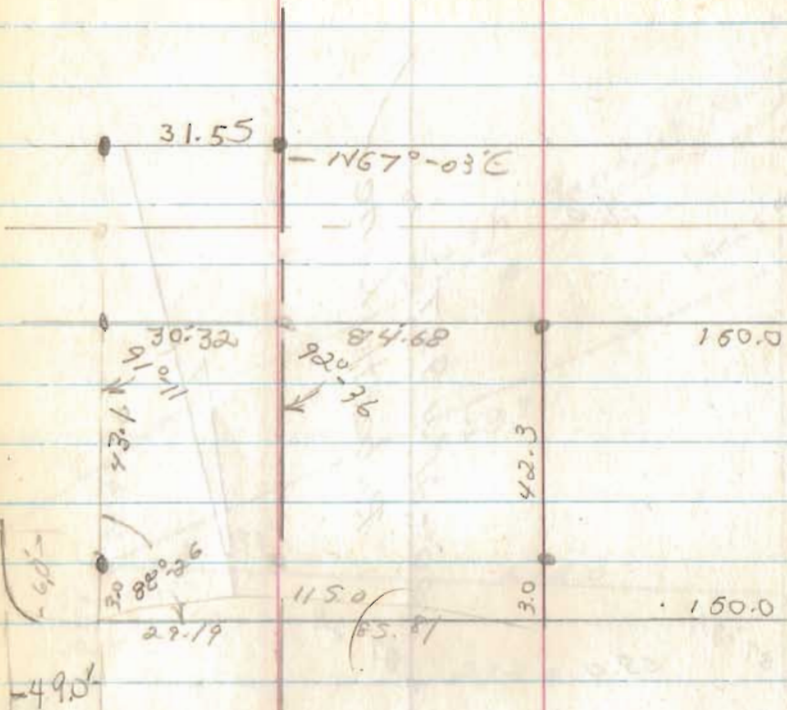
INDEXED ON MAP  
6148



New Bulkhead

June, 66

41



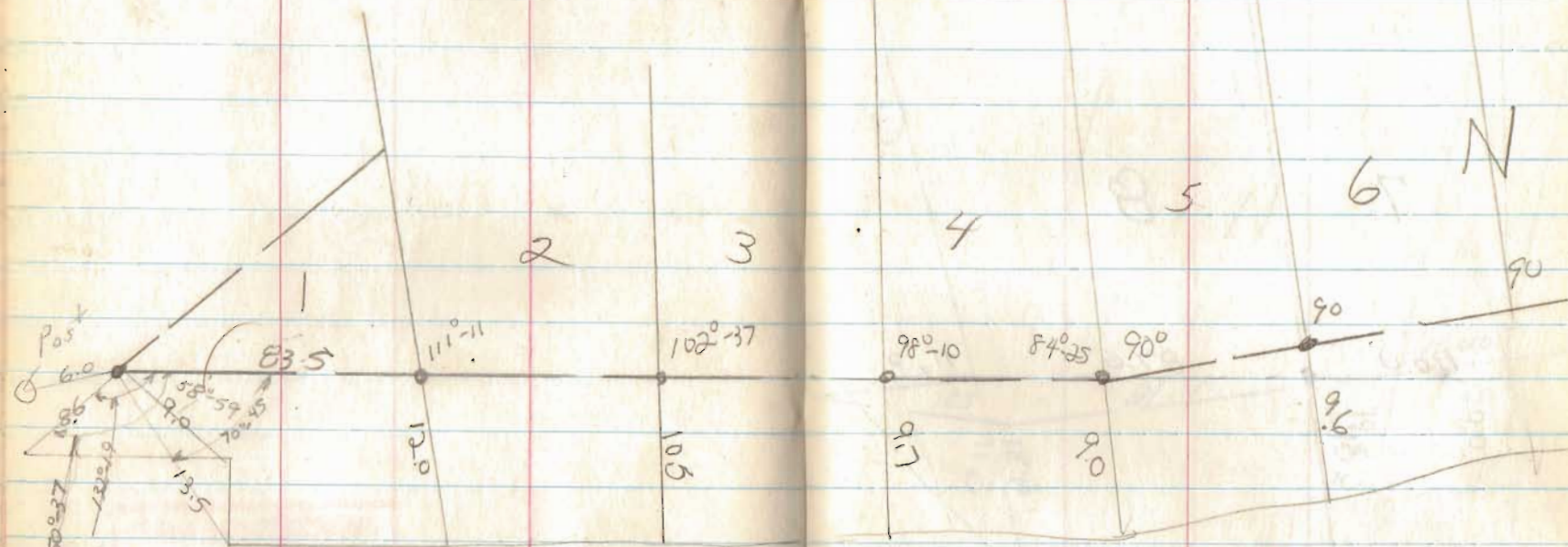
Robert L. King

INDEXED ON MAP

INDEXED ON MAP  
6148

01 DE 15

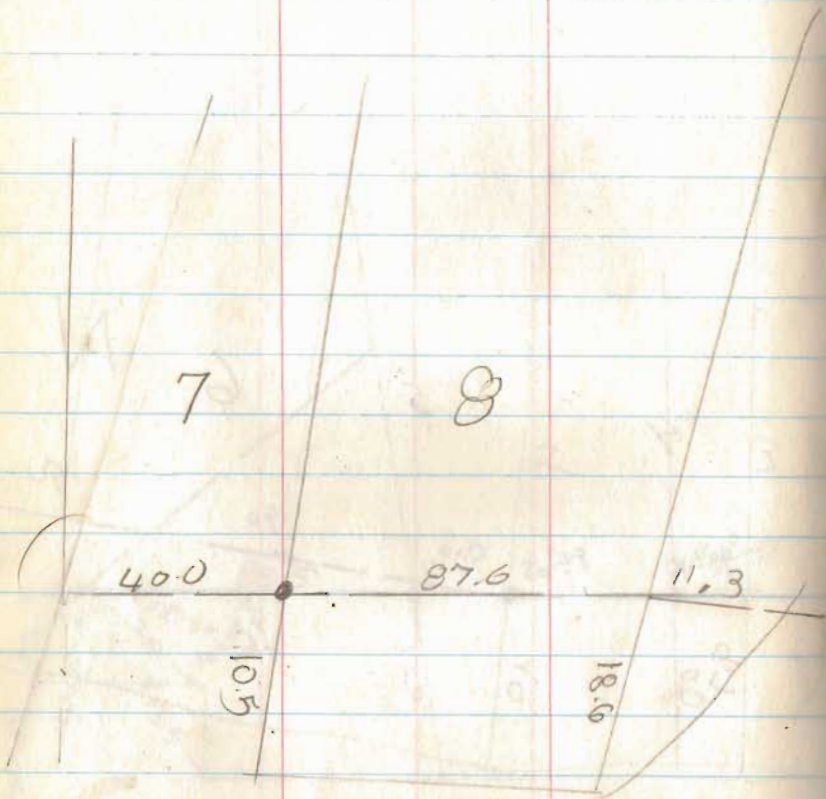
43



INDEXED ON MAP  
1966



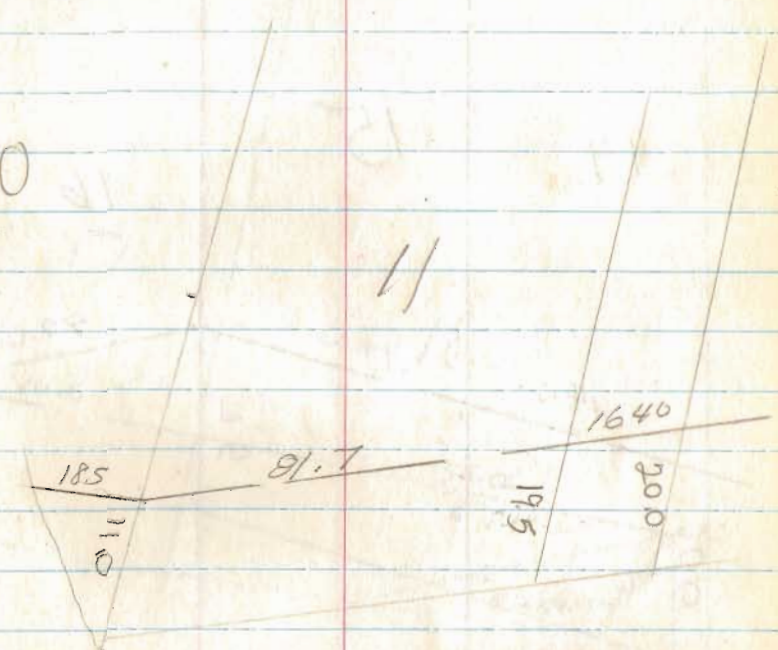
O'Dell's



INDEXED ON MAP

44

10

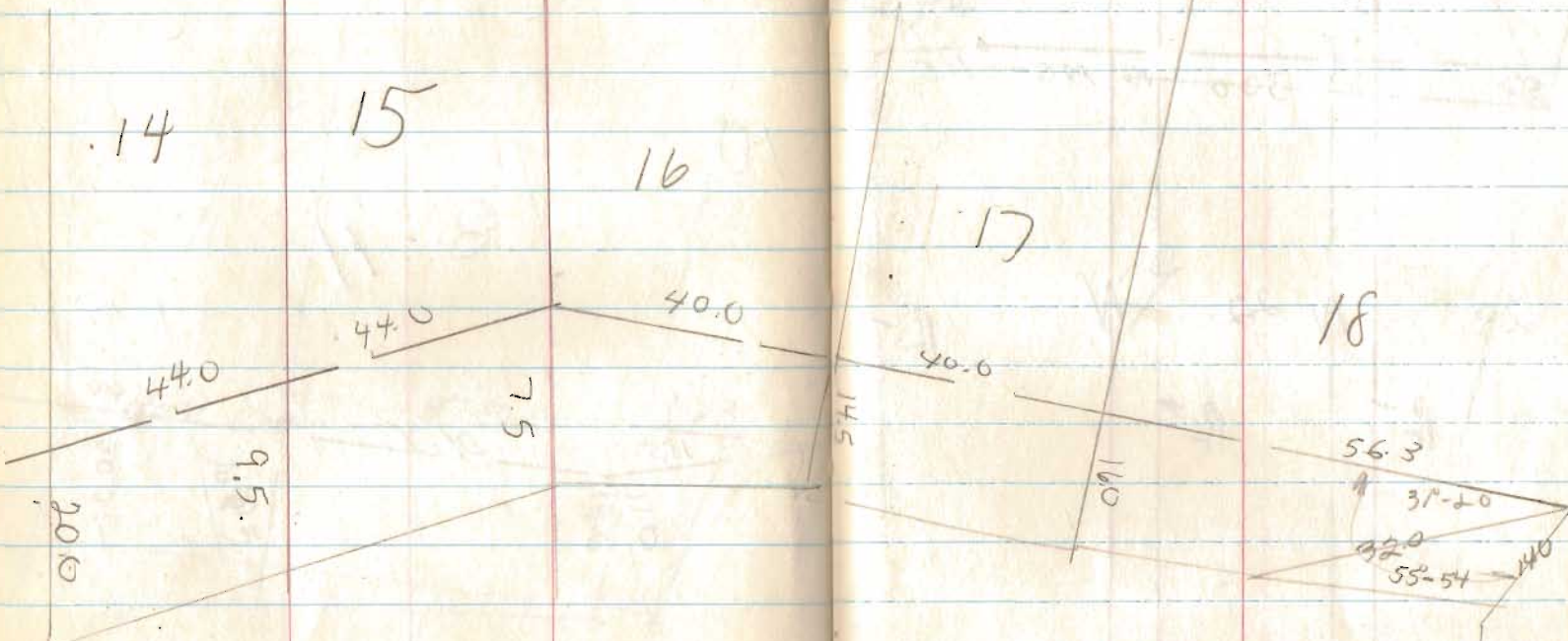


INDEXED ON MAP  
1966

O' Dell's

O' Dell's

45



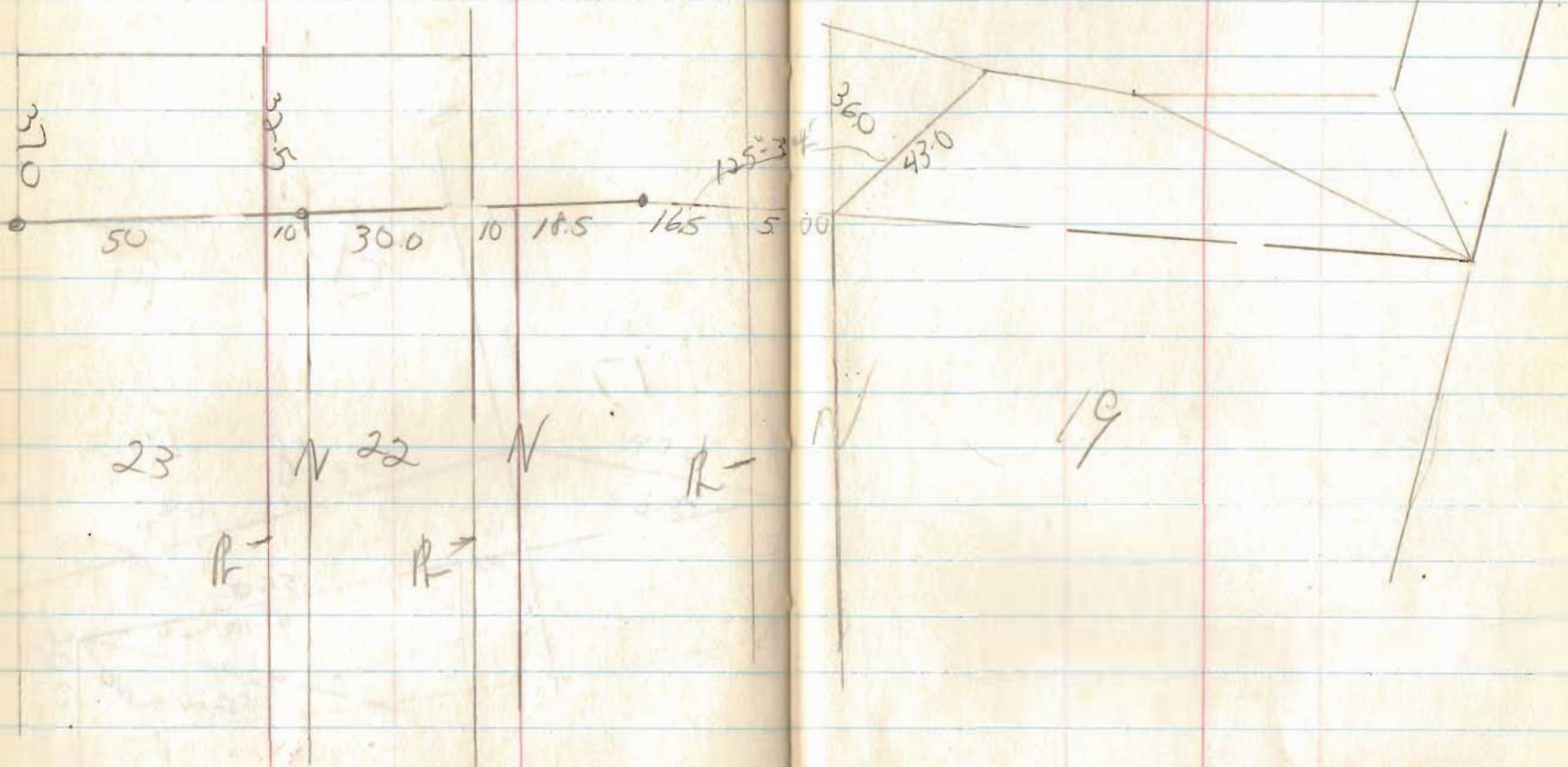
INDEXED ON MAP

INDEXED ON MAP  
1966



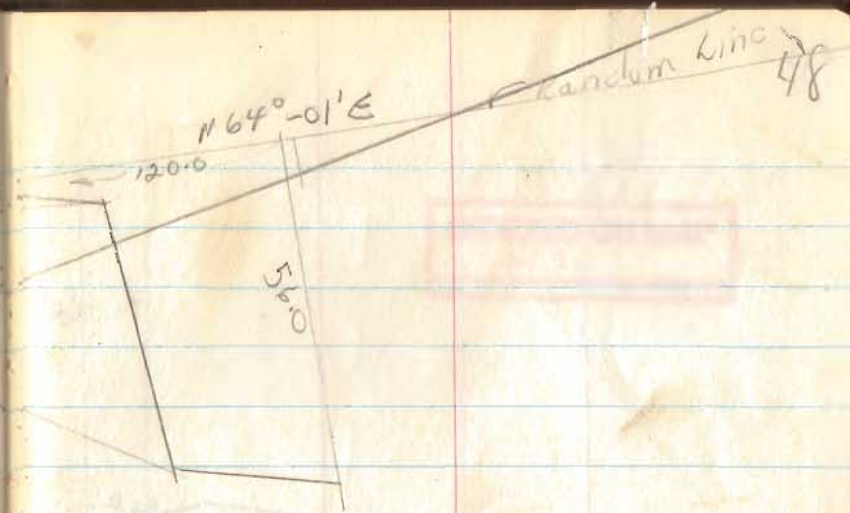
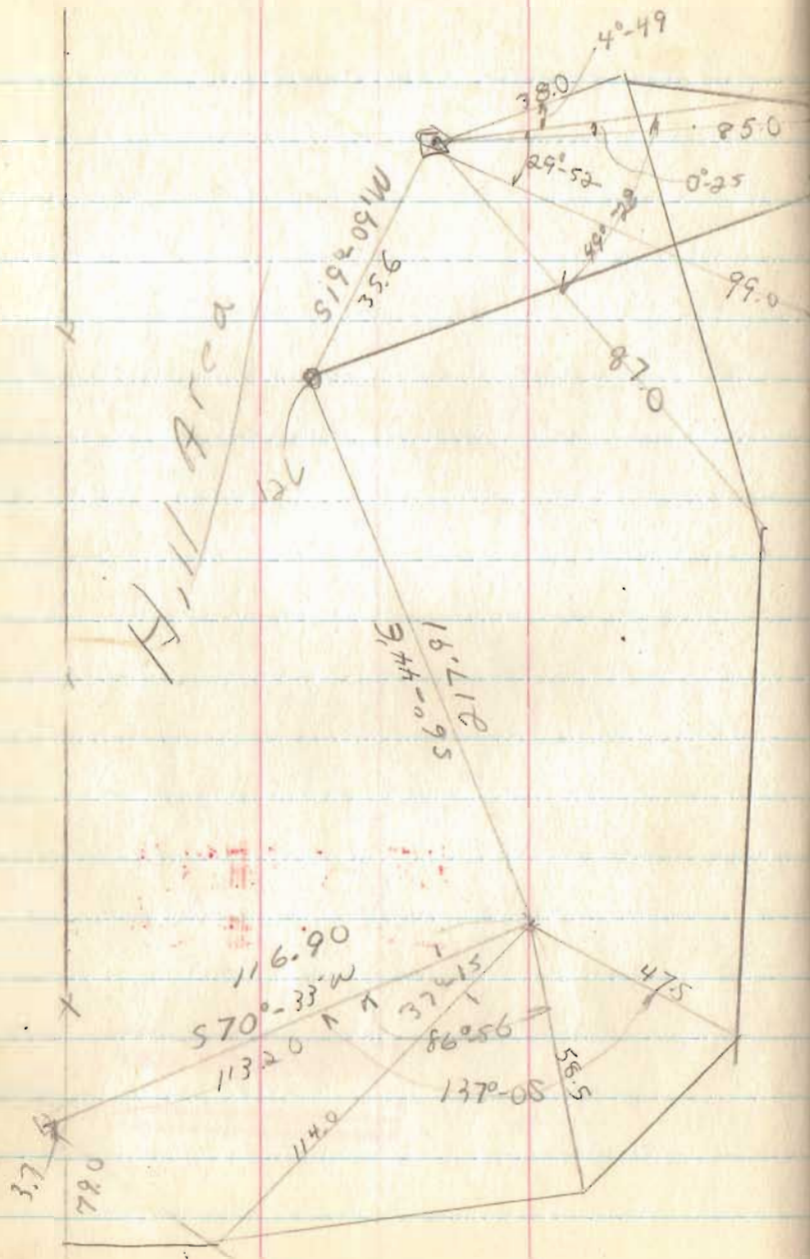
O' Dells

46



INDEXED ON MAP  
1966

INDEXED ON MAP  
1966

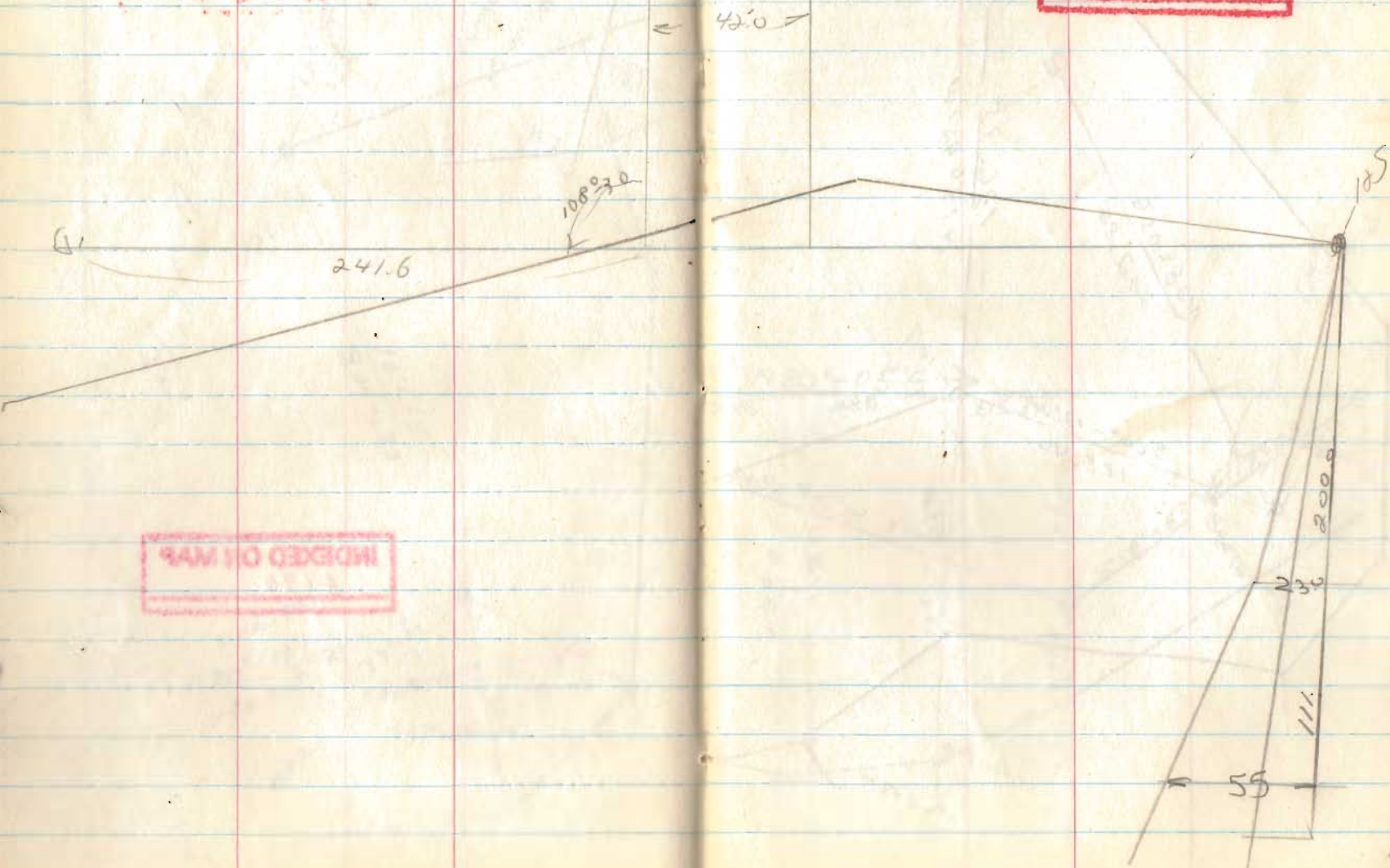


INDEXED ON MAP  
 4190



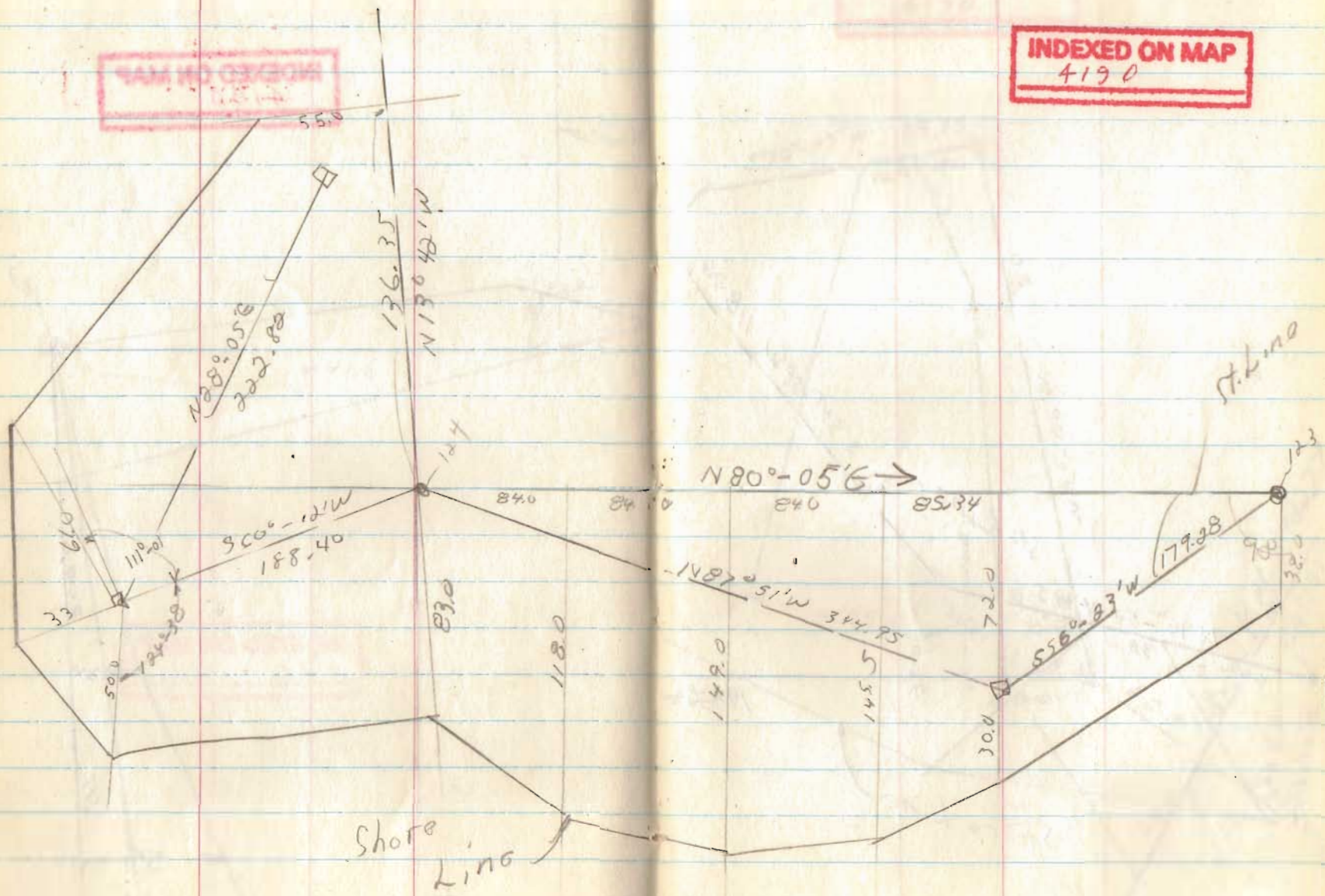
49

INDEXED ON MAP  
4190



INDEXED ON MAP  
4190

INDEXED ON MAP  
4190



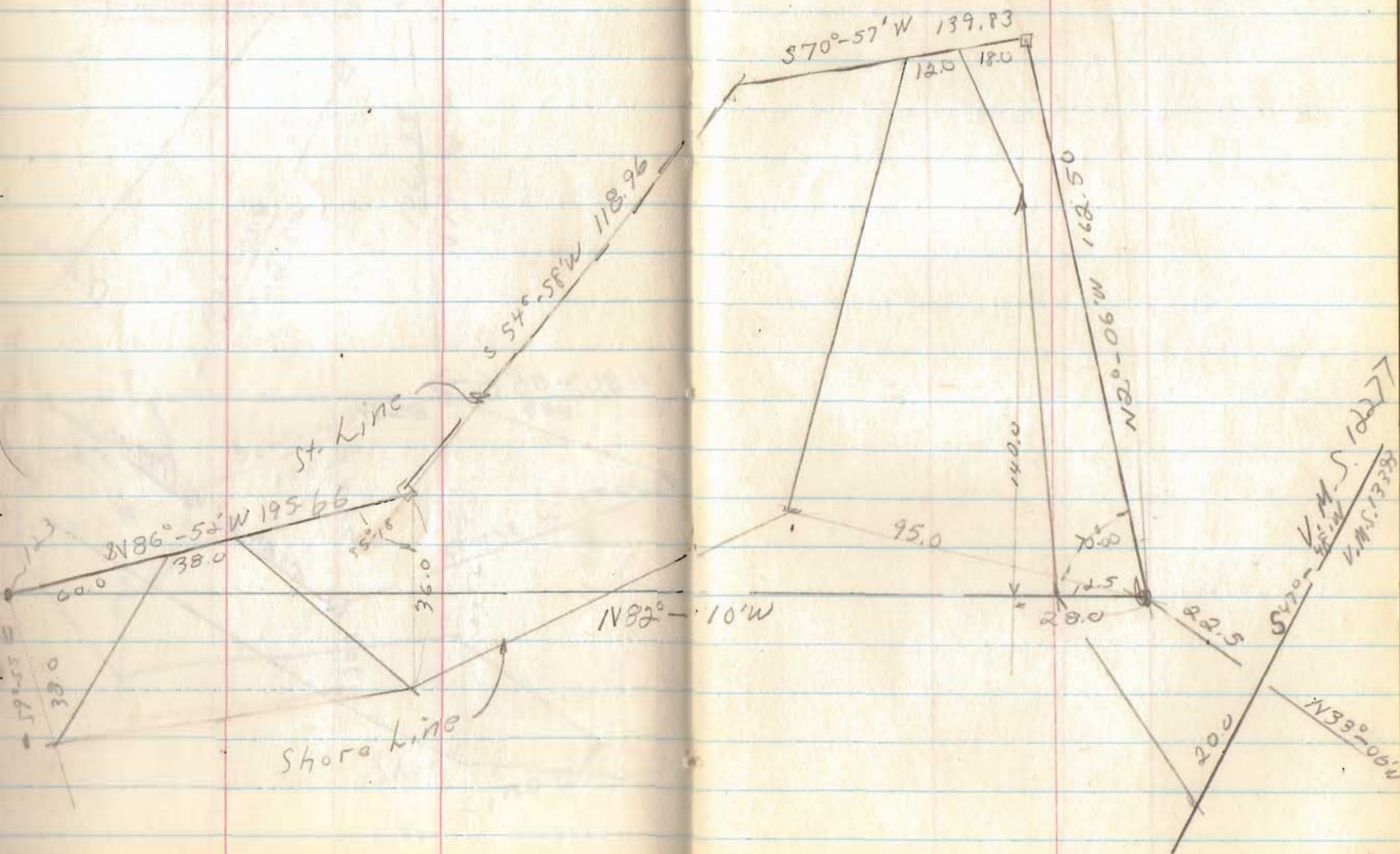


INDEXED ON MAP

INDEXED ON MAP

4190

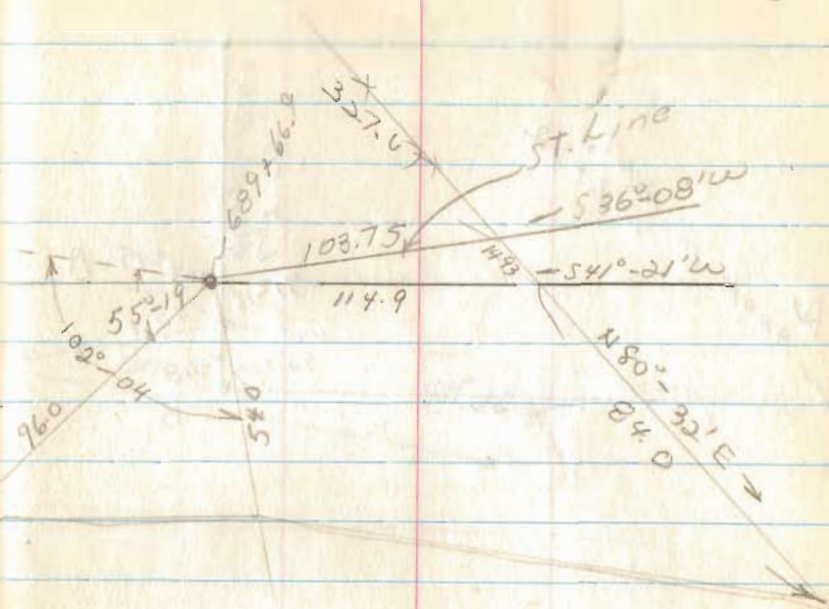
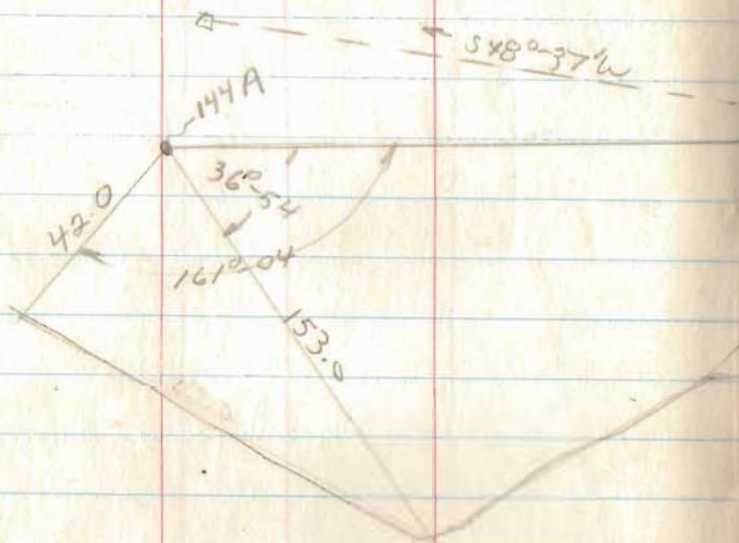
51



For Sassafra Pt.

July, 1967

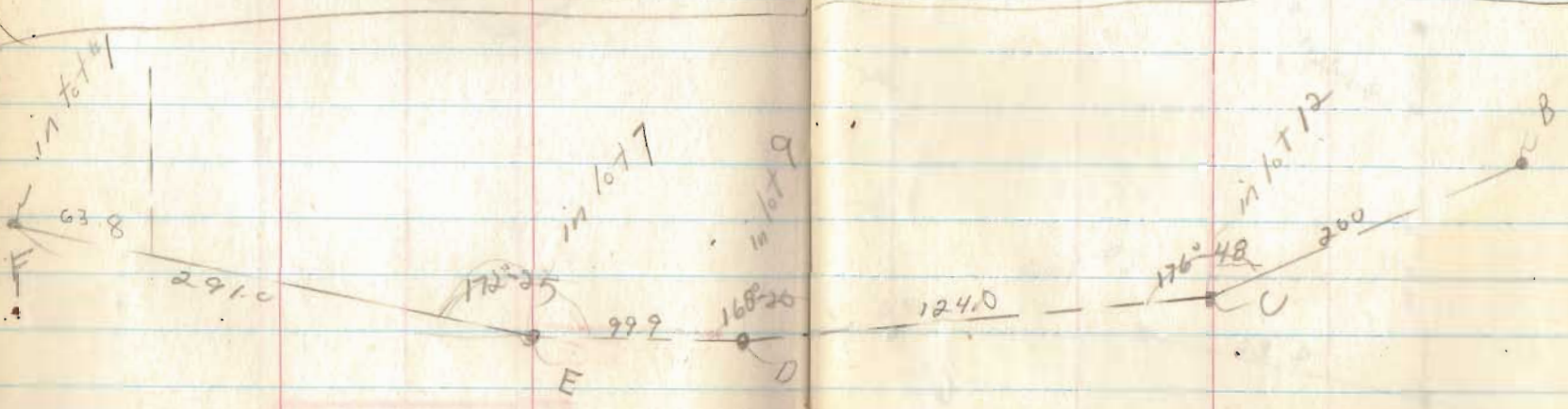
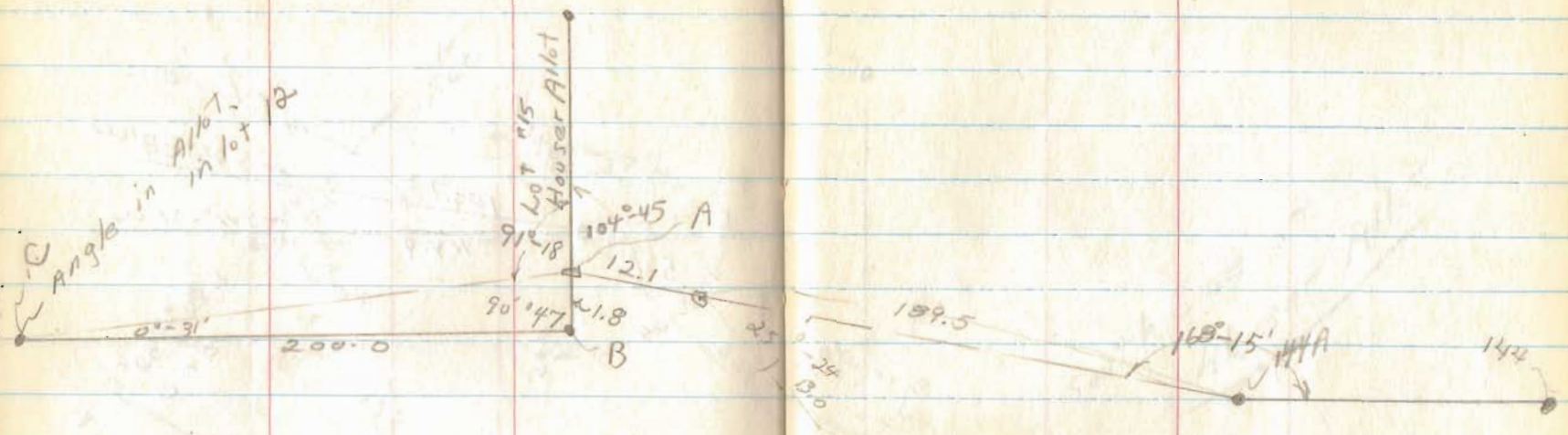
53



INDEXED ON MAP  
2146

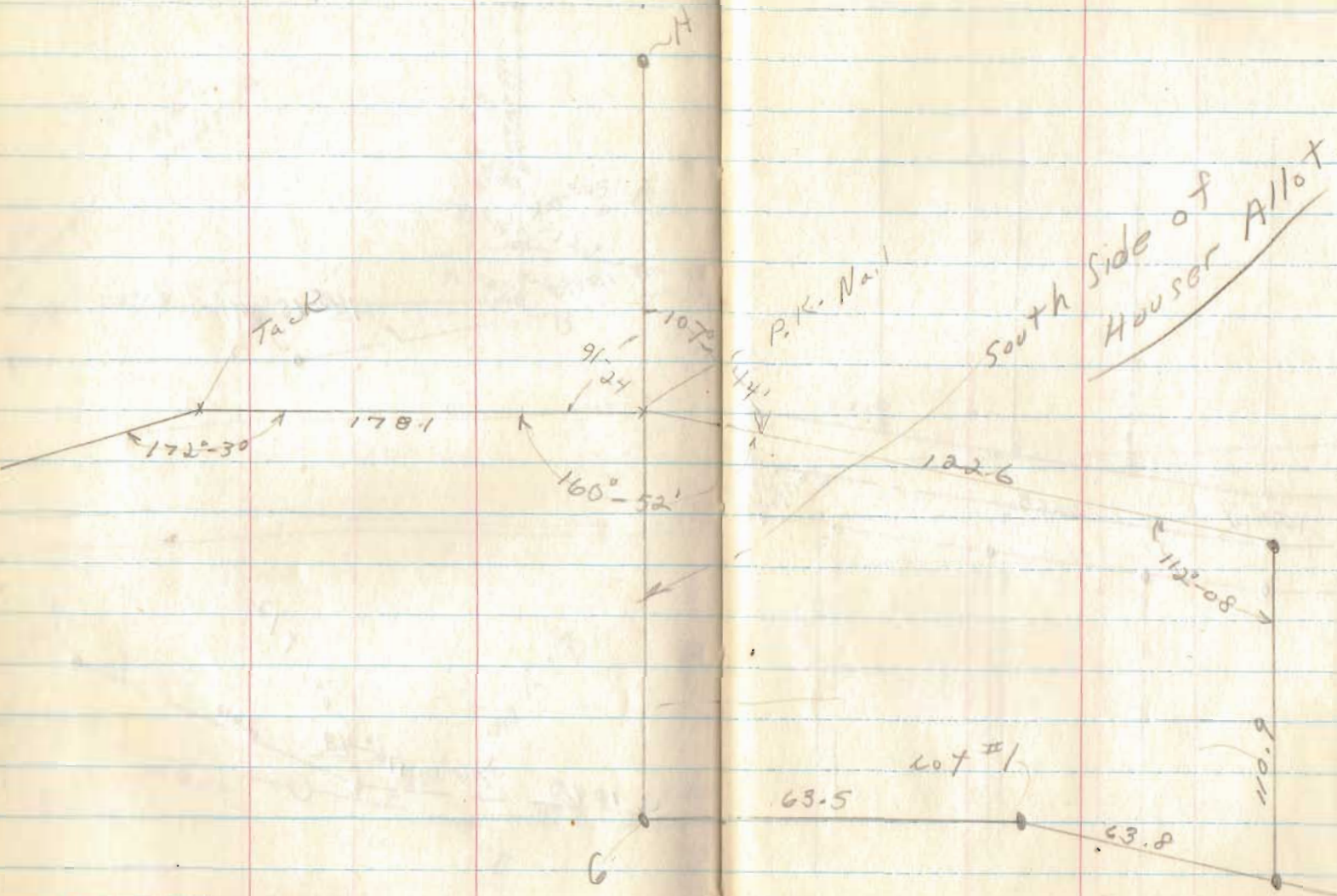
SAVED ON FILE





INDEXED ON MAP  
2166

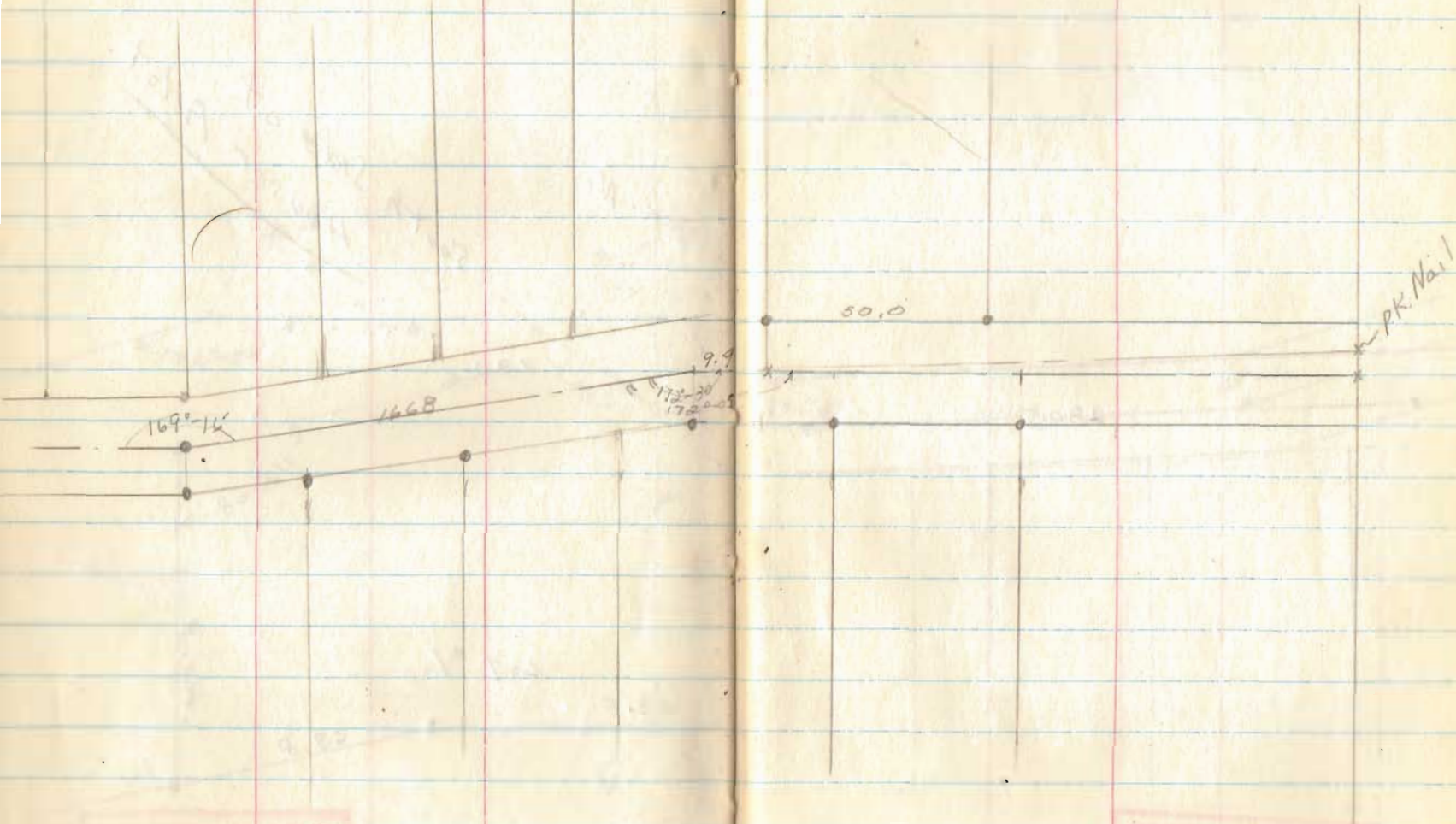
PROPERTY OF THE  
SURVEYING  
DEPARTMENT



INDEXED ON MAP  
2166

INDEXED ON MAP  
2166





INDEXED ON MAP  
2166

2805

173°-39

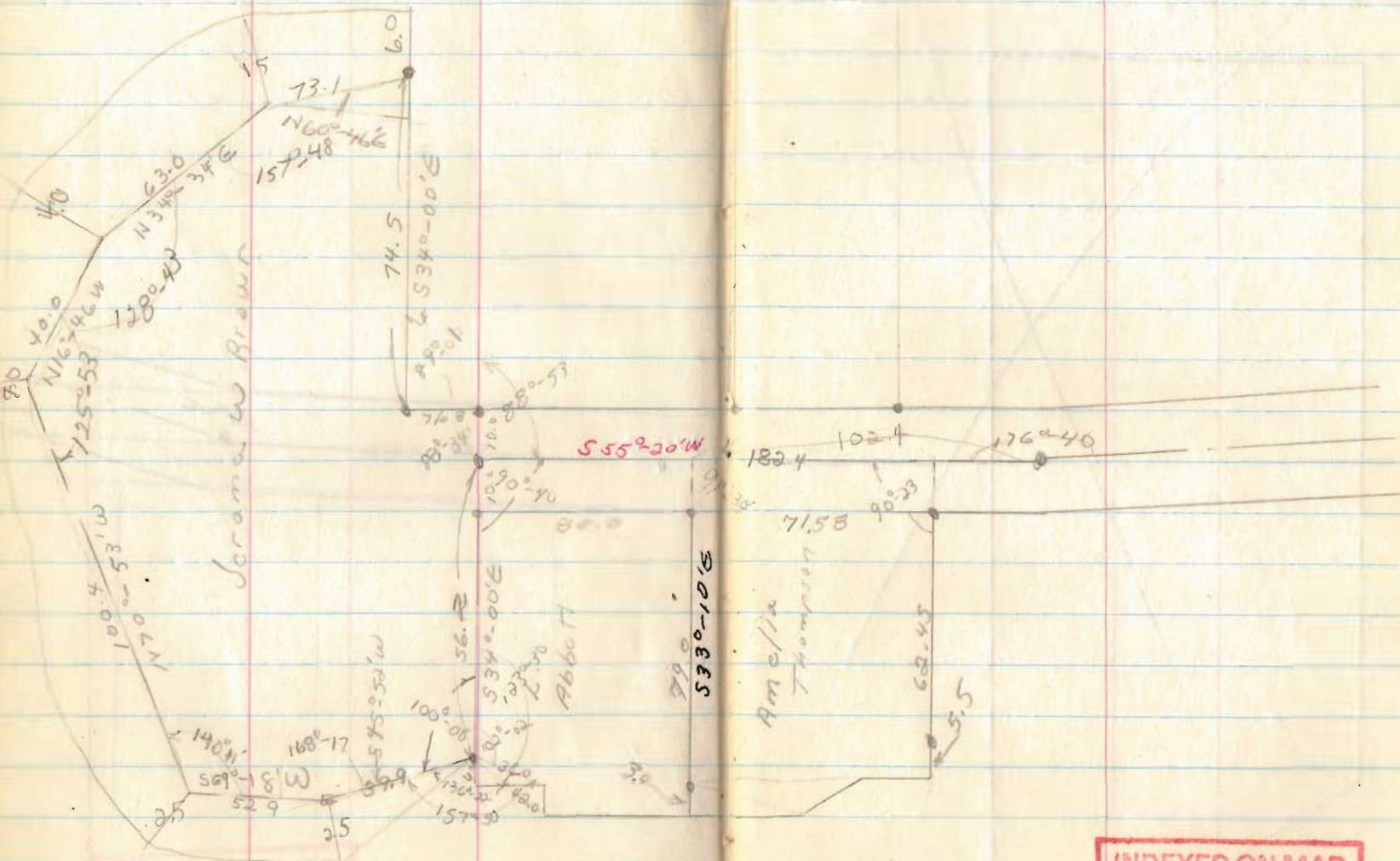
90.1

168°-16

INDEXED ON MAP

2164

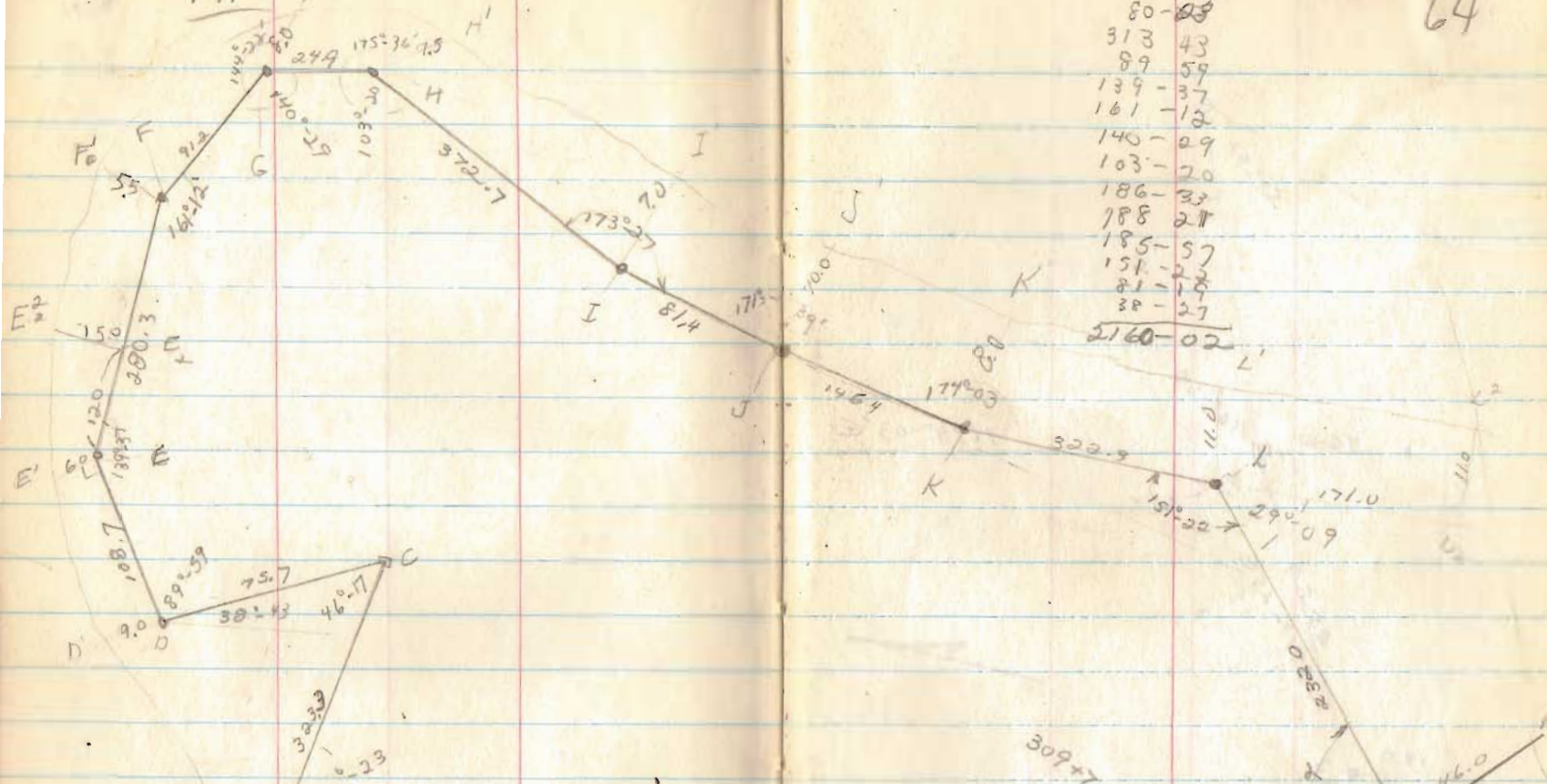




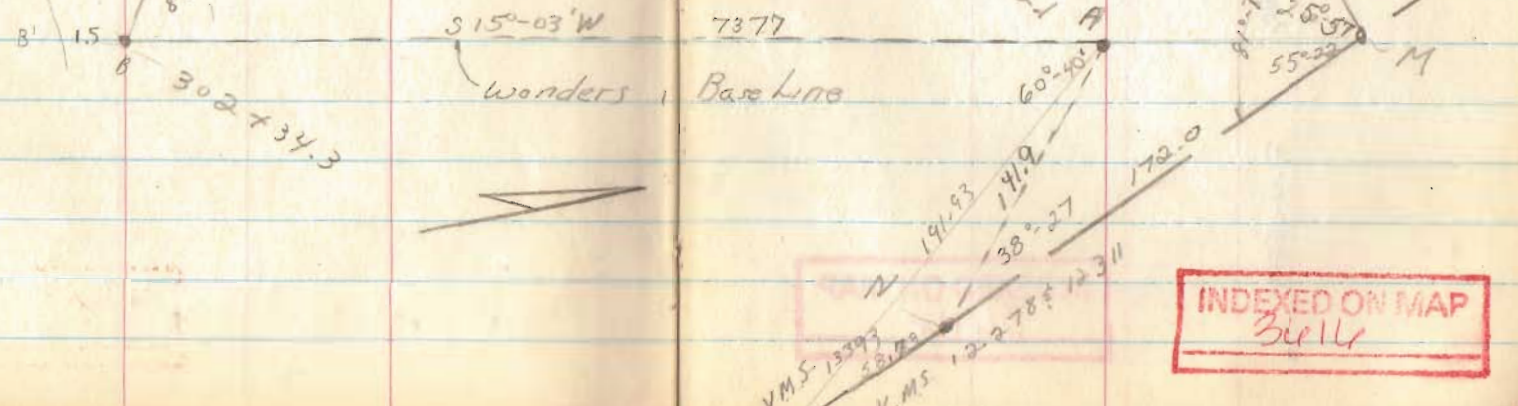
June, 65

64

FAIR G'



299	-	20
80	-	03
313	-	43
89	-	59
139	-	37
161	-	12
140	-	09
103	-	20
186	-	32
788	-	21
185	-	57
151	-	22
81	-	18
38	-	27
2160		- 02



S 155-03' W  
Wonders Base Line



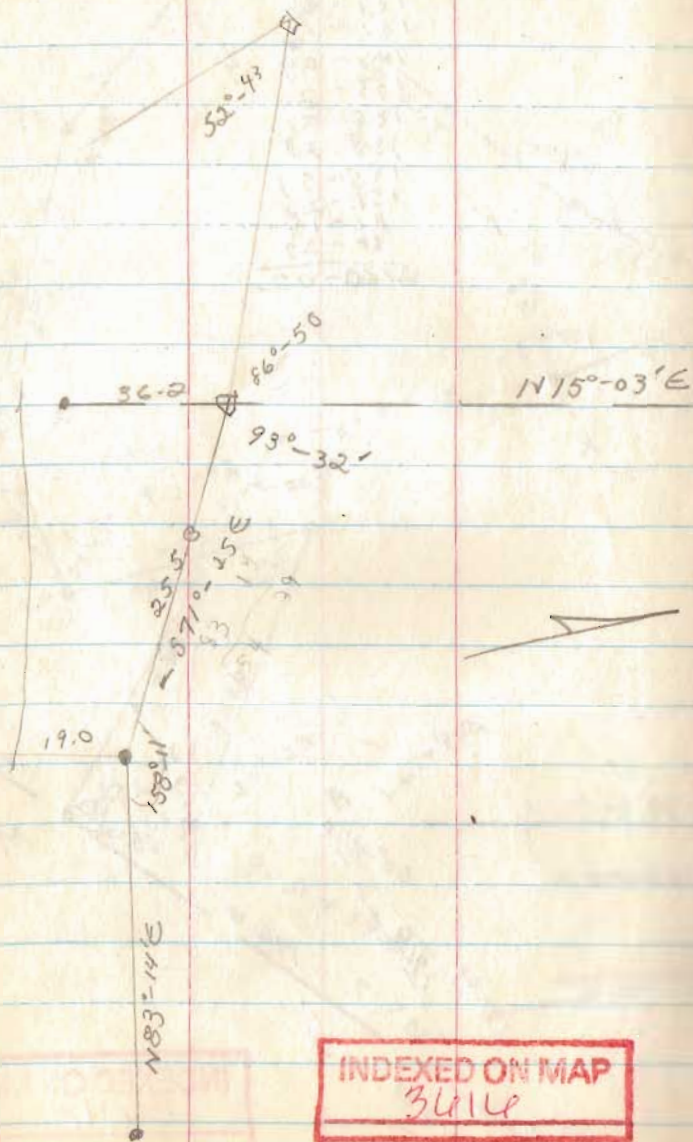
VM5-13993  
58.78  
V.M.S 12-2784-12311

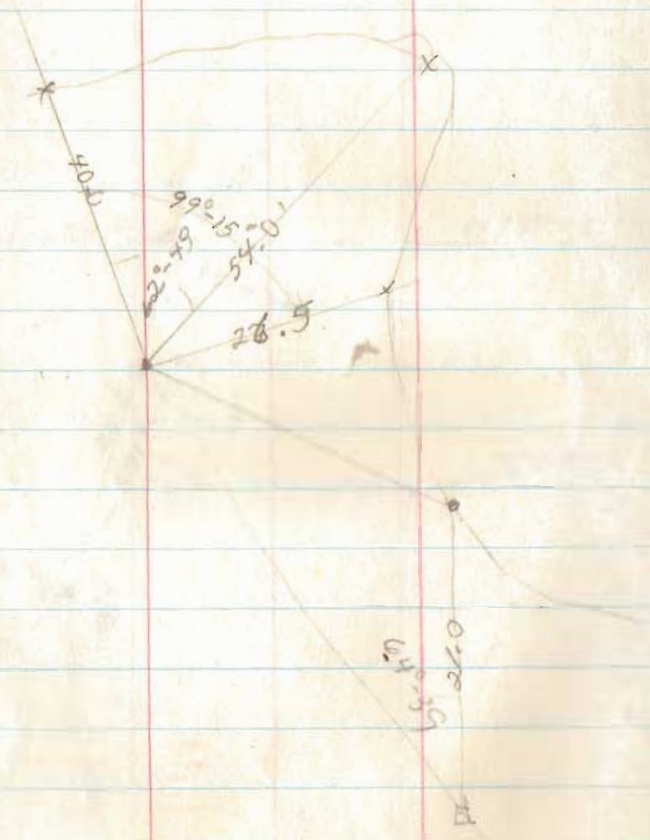
INDEXED ON MAP  
Buller



FAIR

65-



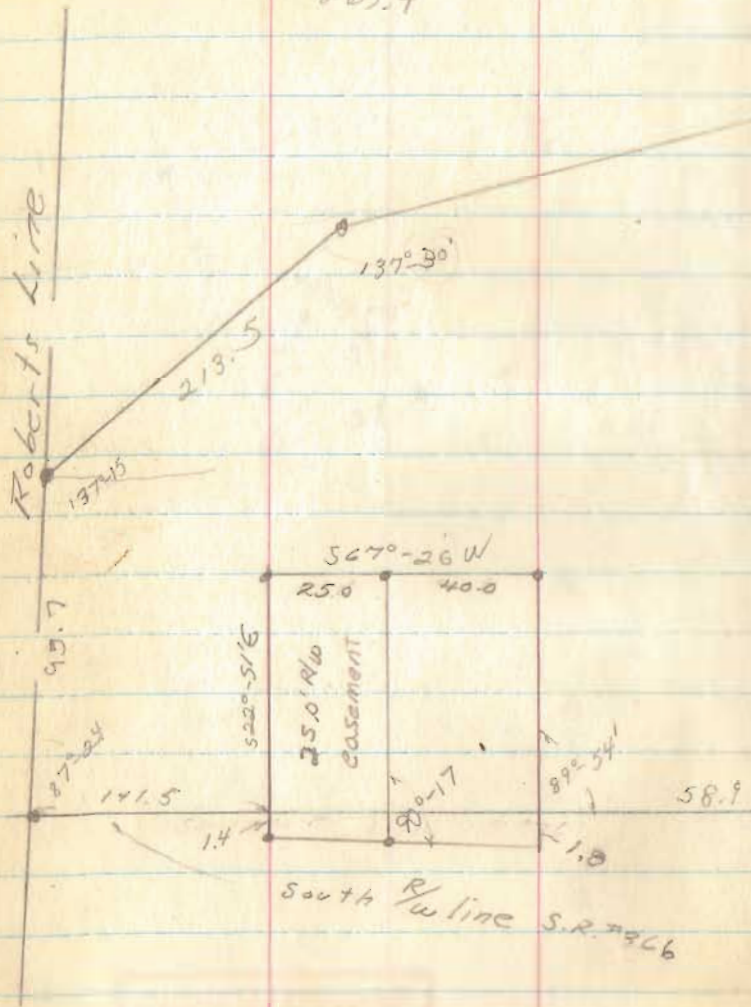


INDEXED ON MAP  
36114



1.L. 341

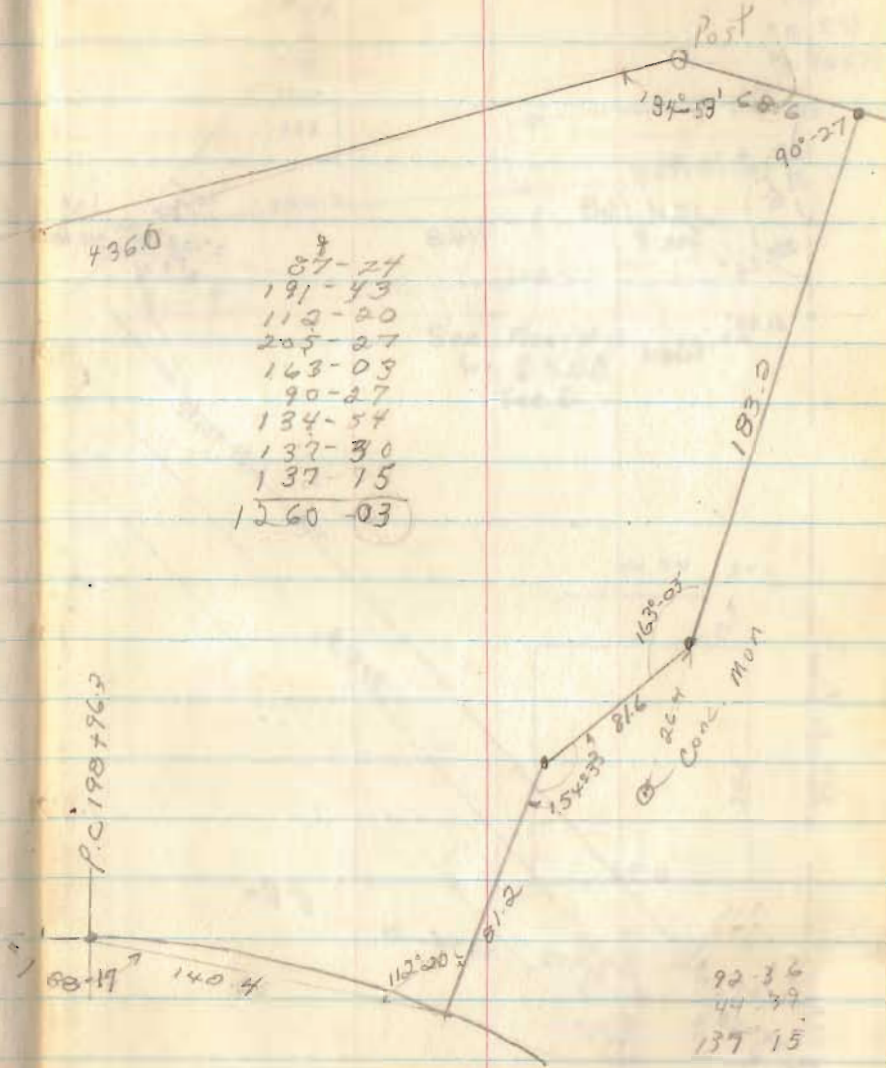
141.5  
65  
58.9  
265.4



436.0

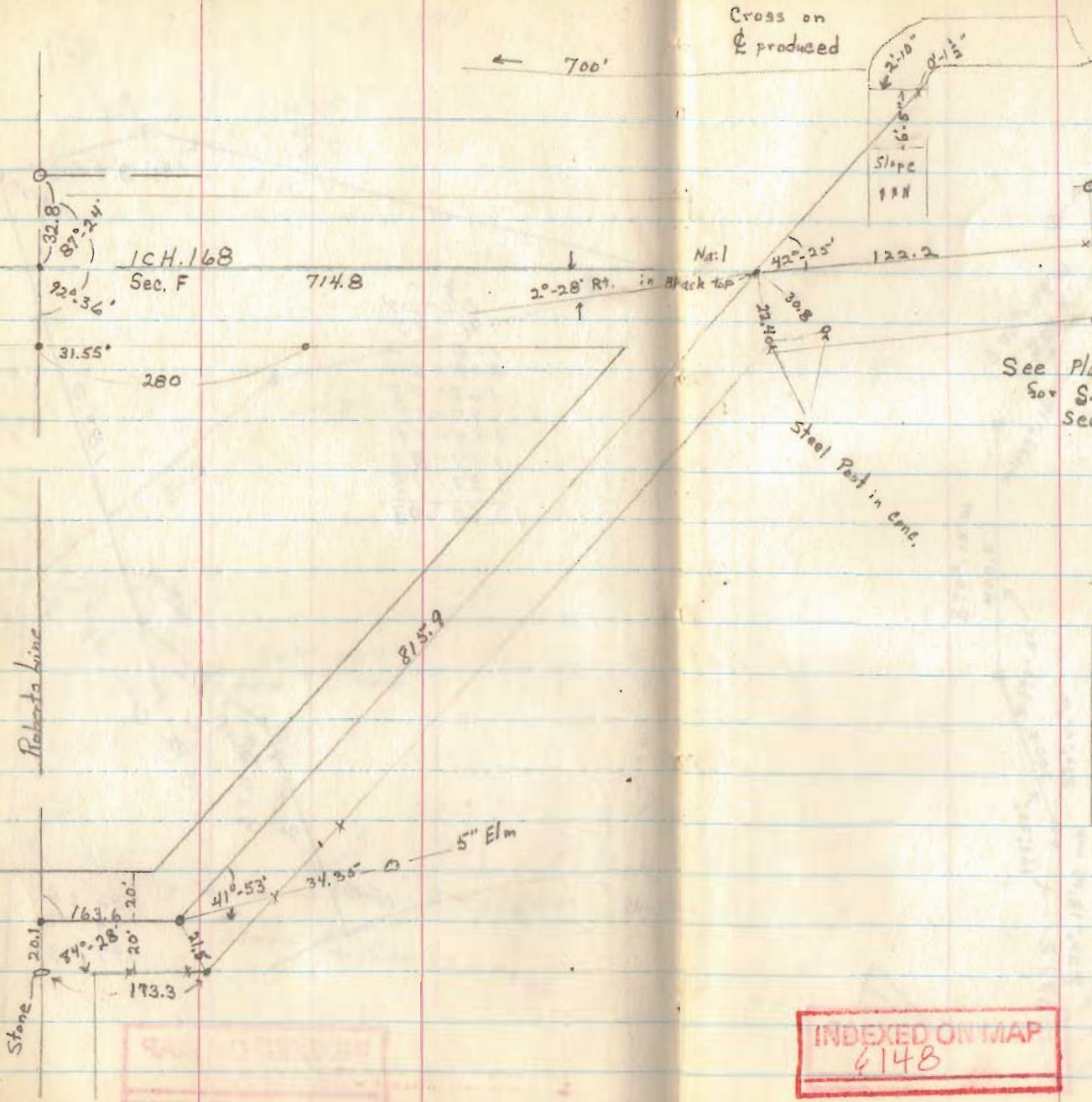
87-24  
 191-43  
 112-20  
 205-27  
 163-03  
 90-27  
 134-54  
 137-30  
 137-15  
 1260-03

67

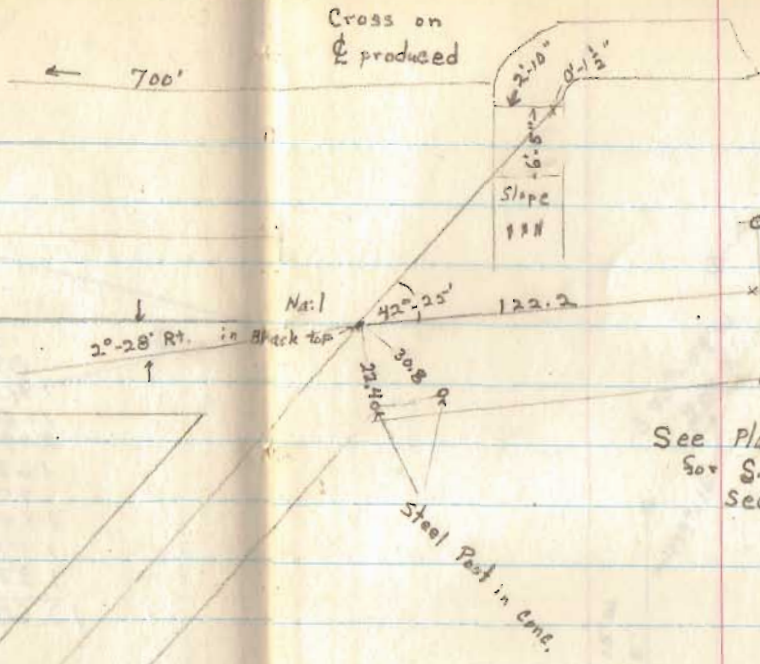


92-36  
44-79  
137-15

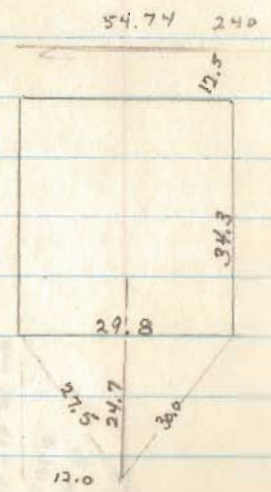
INDEXED ON MAP  
6148



ICH. 168  
Sec. F  
714.8



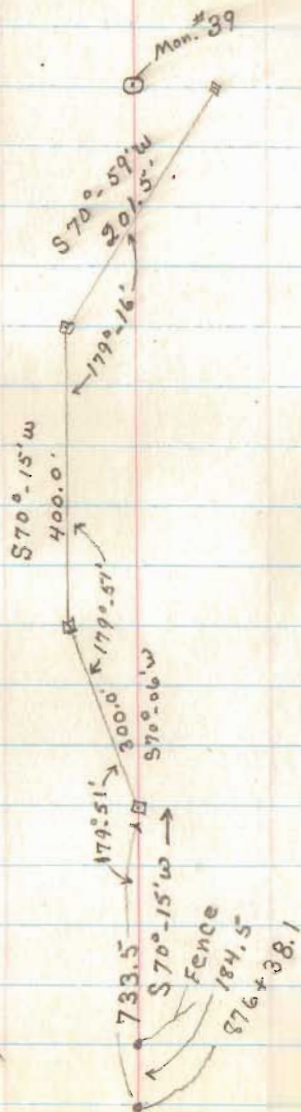
See Plan W-1; pg. 10  
So. S.H. 168  
Sec. G



68  
1937  
F.B. 571  
Pg. 76 F77

INDEXED ON MAP  
6148





INDEXED ON MAP  
140