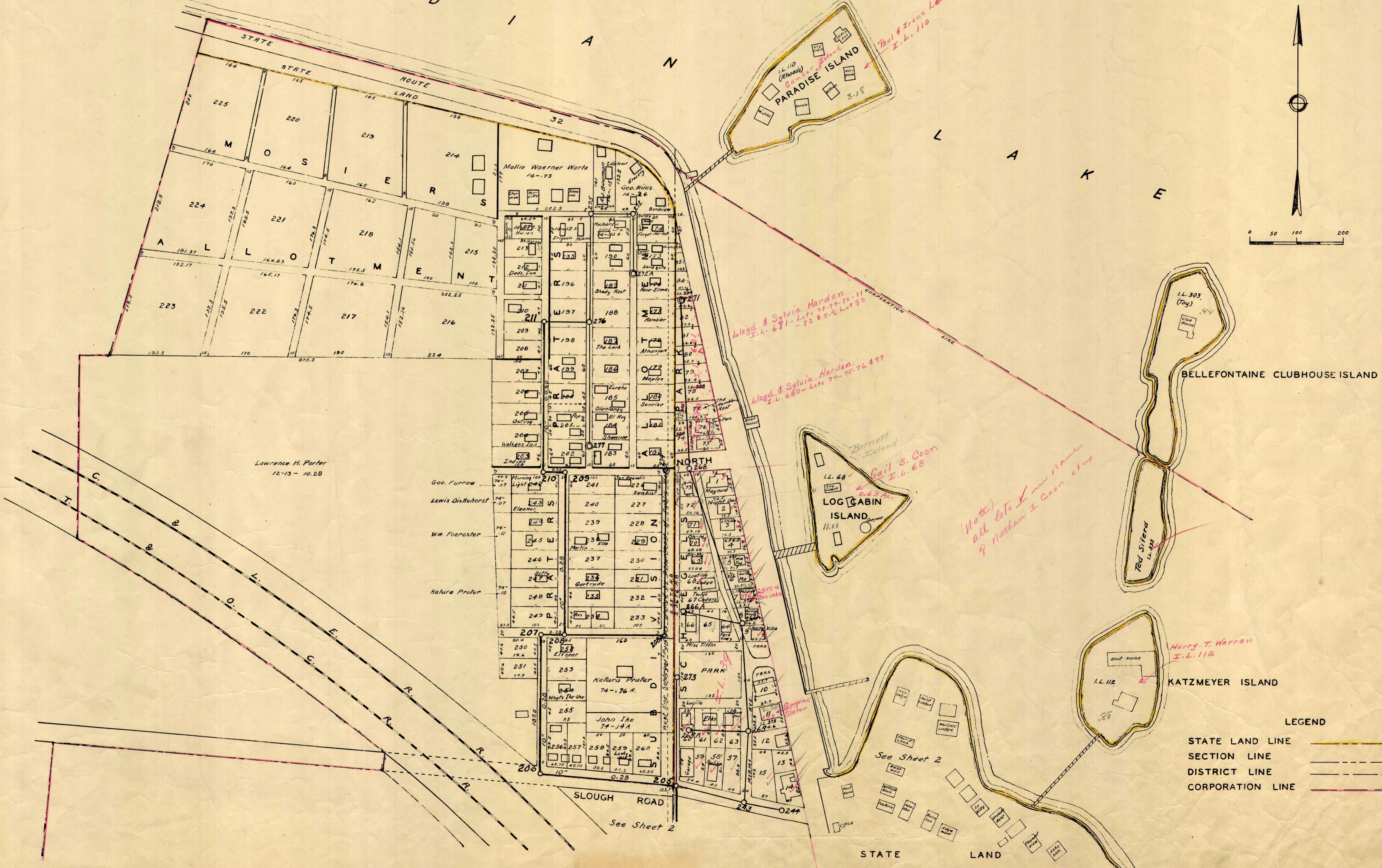


STATE LEASES INDIAN LAKE
STOKES AND WASHINGTON TOWNSHIPS
LOGAN COUNTY OHIO

CLAIR A. INSKEEP COUNTY ENGINEER

MAY 1943

I
N
D
I
A
N



Paul & Irene Leary
I.L. 110

Lloyd & Sylvia Harden
I.L. 681 - Lots 72-79-80-81
- 72 & 5-7-80-81

Lloyd & Sylvia Harden
I.L. 680 - Lots 74-75-76 & 77

Gail B. Coon
I.L. 68

Note:
all lots in name
& Nathan I. Coon, et al

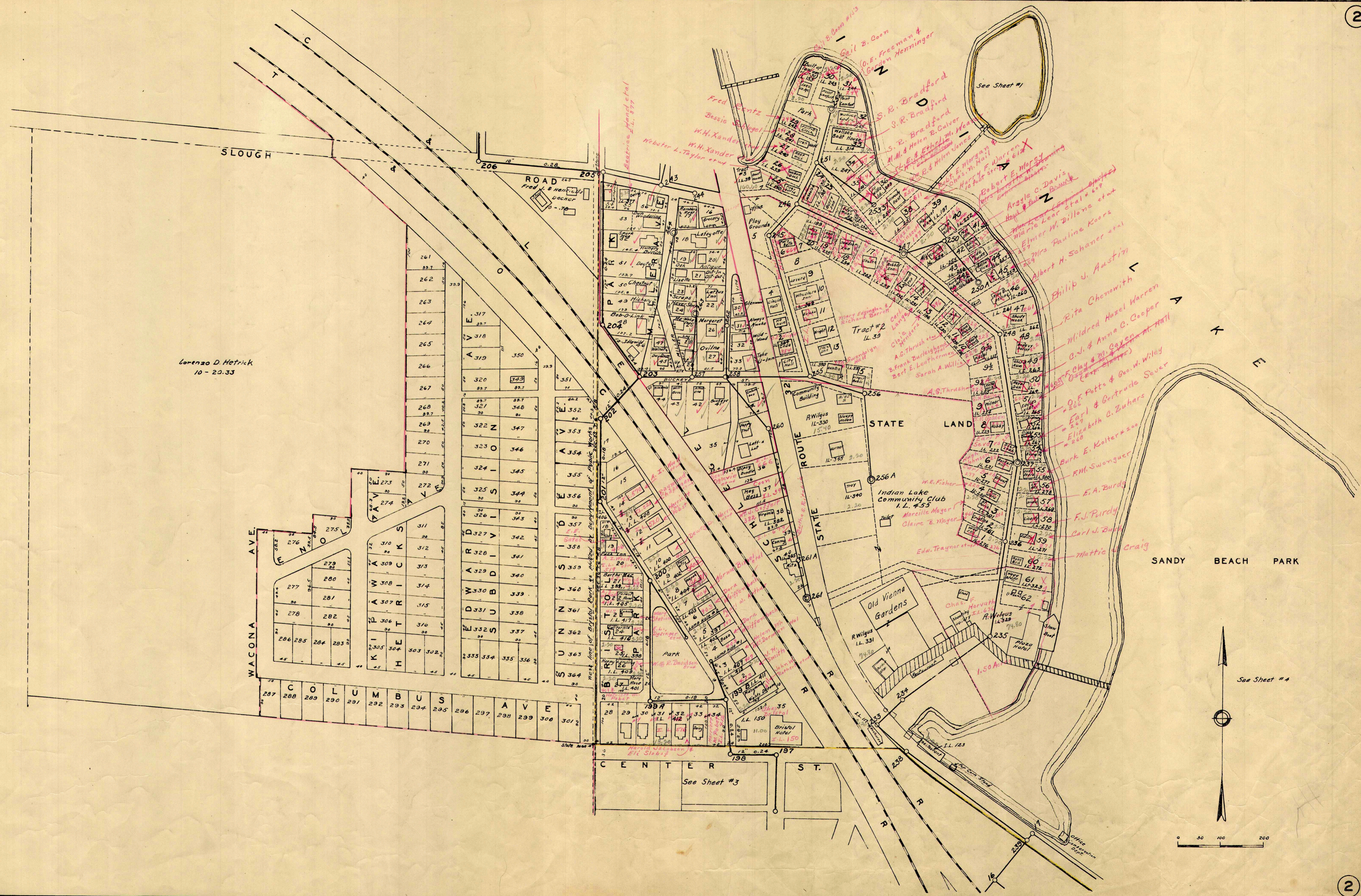
Harry T. Warren
I.L. 112

I.L. 303
(Toy)

Ted Siferd
I.L. 88

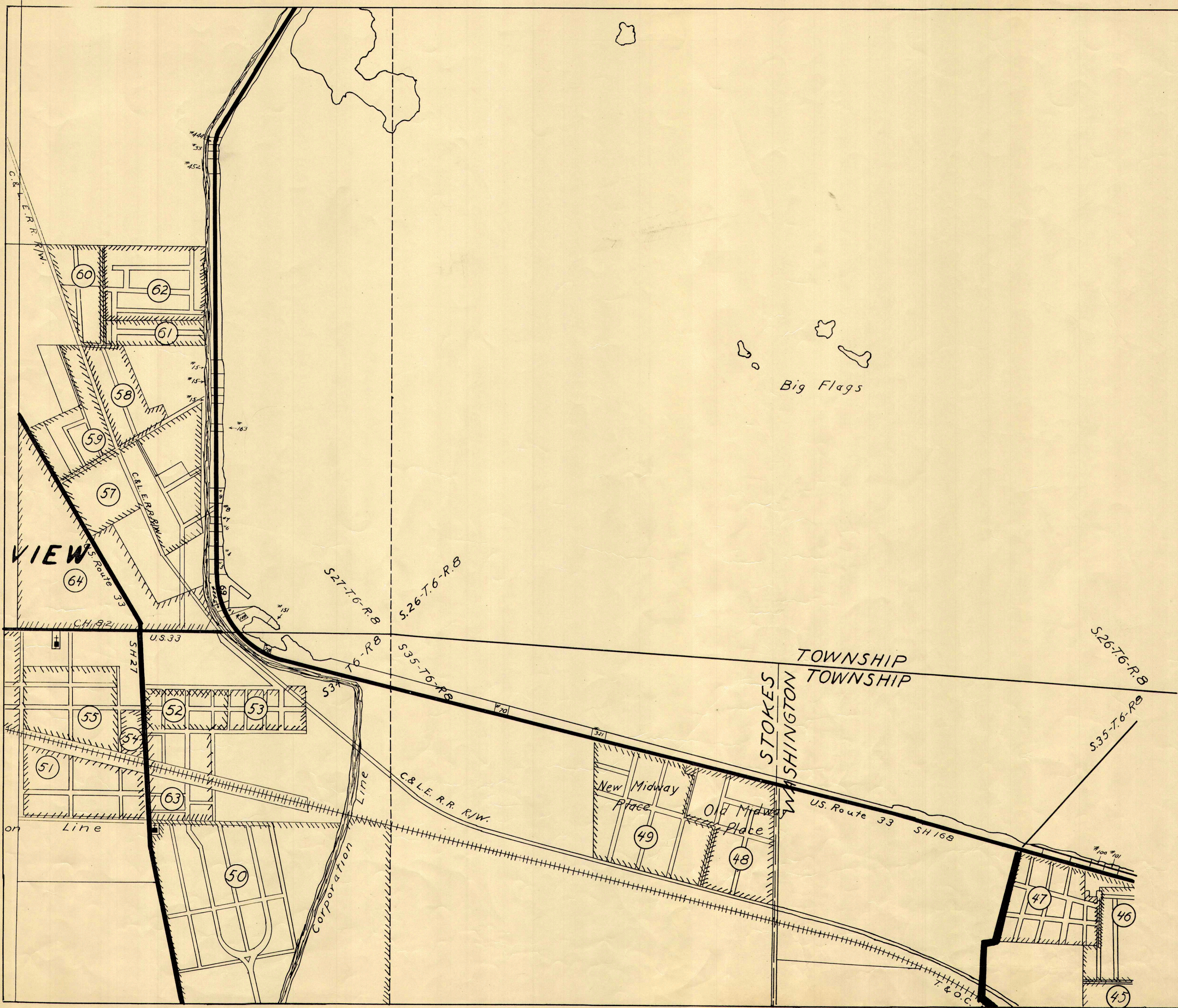
I.L. 112

- LEGEND
- STATE LAND LINE
 - SECTION LINE
 - DISTRICT LINE
 - CORPORATION LINE



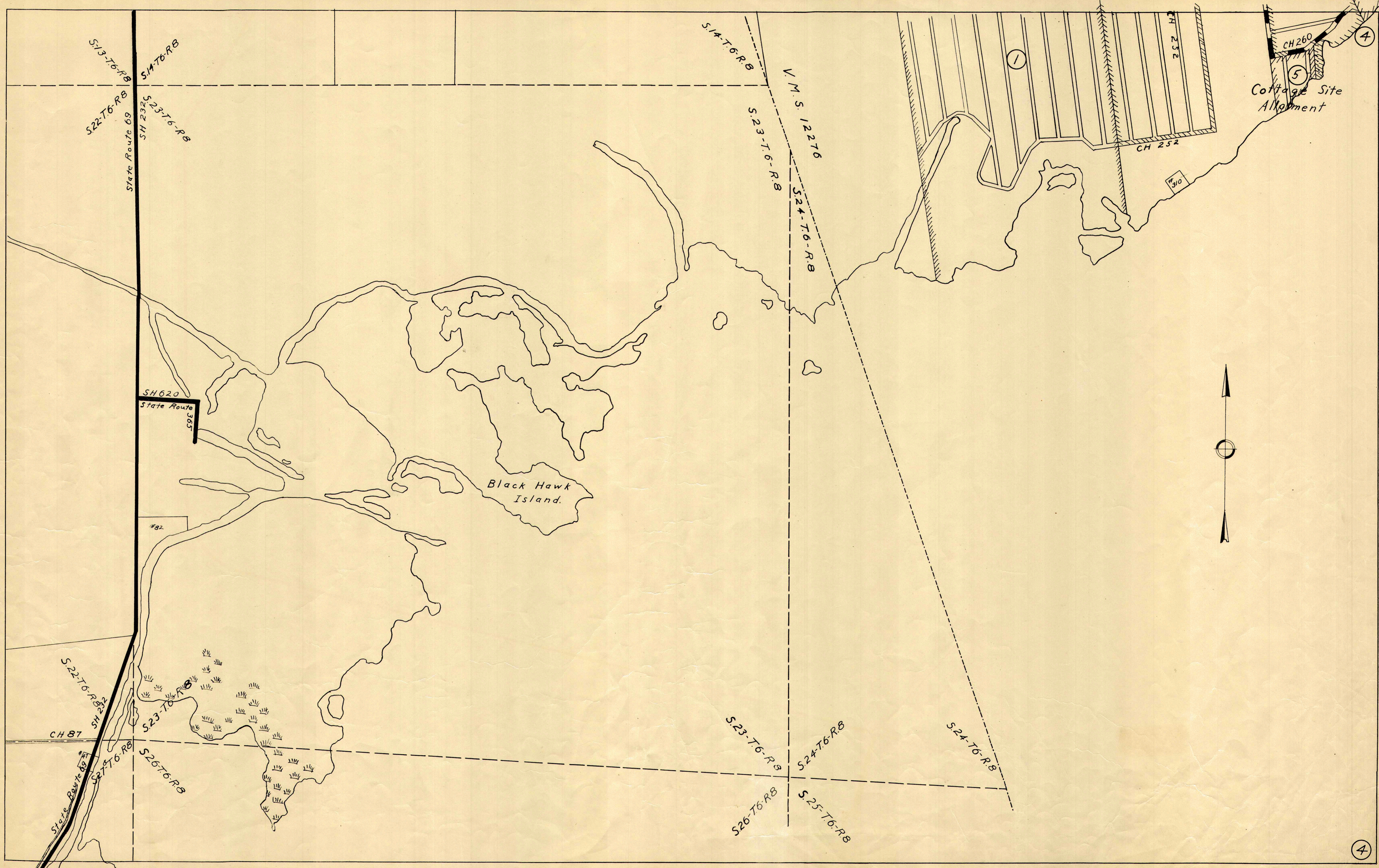
Lorenzo D. Hetrick
10-20.33

See Sheet #4



Big Flags





S13-T6-R8
S14-T6-R8
S22-T6-R8
S23-T6-R8
SH 232
State Route 69

S14-T6-R8
V.M.S. 12276
S23-T6-R8
S24-T6-R8

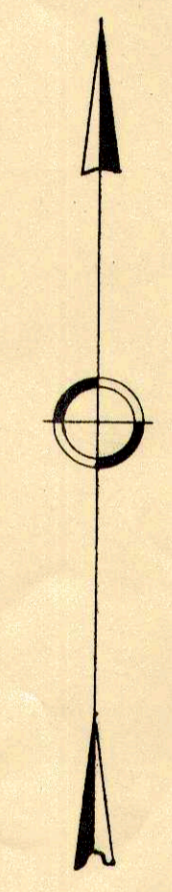
Cottage Site Alignment

SH 620
State Route 385

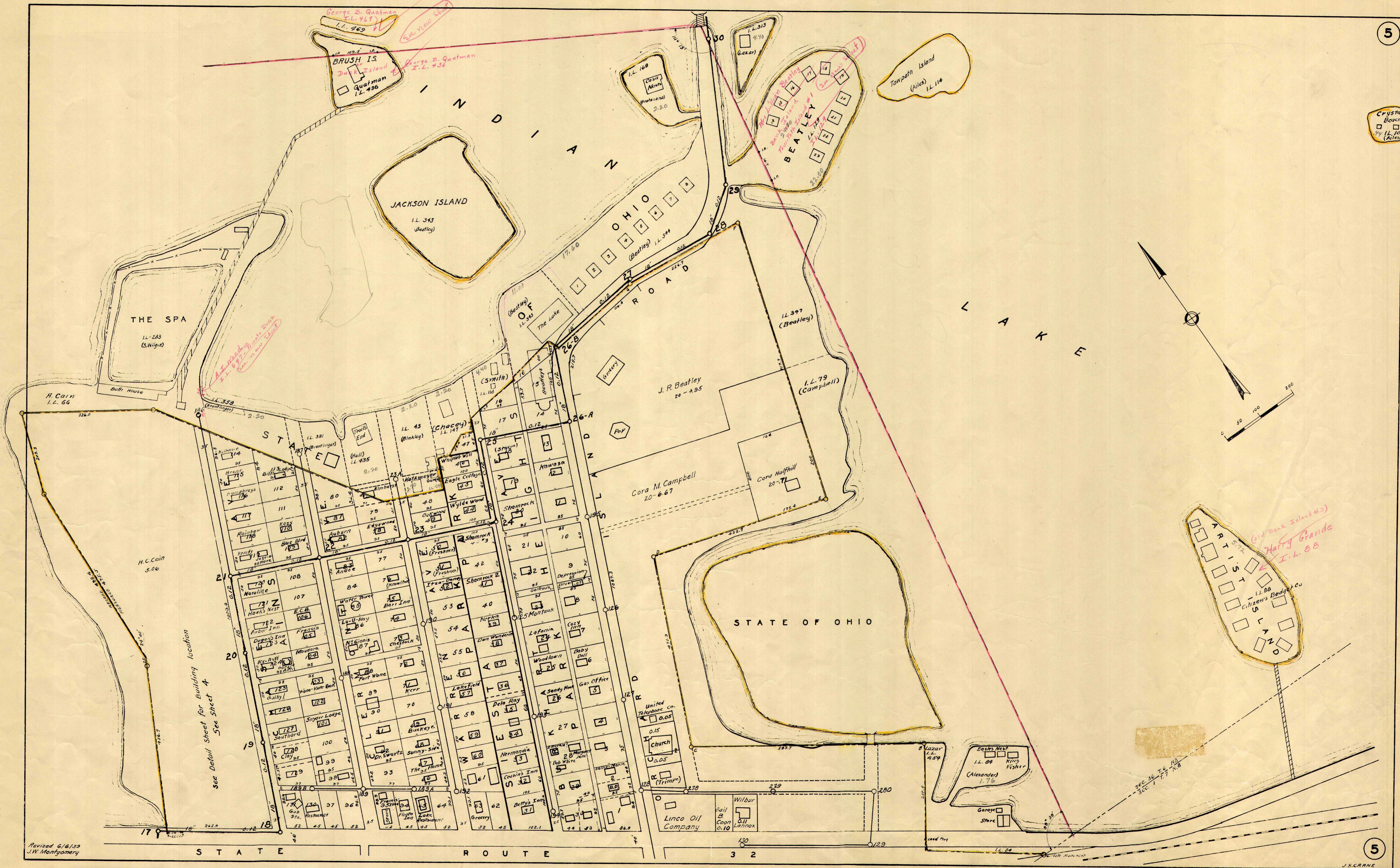
Black Hawk Island.

S22-T6-R8
S23-T6-R8
S27-T6-R8
S28-T6-R8
S29-T6-R8
S30-T6-R8
S31-T6-R8
S32-T6-R8
S33-T6-R8
S34-T6-R8
S35-T6-R8
S36-T6-R8
S37-T6-R8
S38-T6-R8
S39-T6-R8
S40-T6-R8
S41-T6-R8
S42-T6-R8
S43-T6-R8
S44-T6-R8
S45-T6-R8
S46-T6-R8
S47-T6-R8
S48-T6-R8
S49-T6-R8
S50-T6-R8
S51-T6-R8
S52-T6-R8
S53-T6-R8
S54-T6-R8
S55-T6-R8
S56-T6-R8
S57-T6-R8
S58-T6-R8
S59-T6-R8
S60-T6-R8
S61-T6-R8
S62-T6-R8
S63-T6-R8
S64-T6-R8
S65-T6-R8
S66-T6-R8
S67-T6-R8
S68-T6-R8
S69-T6-R8
S70-T6-R8
S71-T6-R8
S72-T6-R8
S73-T6-R8
S74-T6-R8
S75-T6-R8
S76-T6-R8
S77-T6-R8
S78-T6-R8
S79-T6-R8
S80-T6-R8
S81-T6-R8
S82-T6-R8
S83-T6-R8
S84-T6-R8
S85-T6-R8
S86-T6-R8
S87-T6-R8
S88-T6-R8
S89-T6-R8
S90-T6-R8
S91-T6-R8
S92-T6-R8
S93-T6-R8
S94-T6-R8
S95-T6-R8
S96-T6-R8
S97-T6-R8
S98-T6-R8
S99-T6-R8
S100-T6-R8

S23-T6-R8
S24-T6-R8
S25-T6-R8
S26-T6-R8
S27-T6-R8
S28-T6-R8
S29-T6-R8
S30-T6-R8
S31-T6-R8
S32-T6-R8
S33-T6-R8
S34-T6-R8
S35-T6-R8
S36-T6-R8
S37-T6-R8
S38-T6-R8
S39-T6-R8
S40-T6-R8
S41-T6-R8
S42-T6-R8
S43-T6-R8
S44-T6-R8
S45-T6-R8
S46-T6-R8
S47-T6-R8
S48-T6-R8
S49-T6-R8
S50-T6-R8
S51-T6-R8
S52-T6-R8
S53-T6-R8
S54-T6-R8
S55-T6-R8
S56-T6-R8
S57-T6-R8
S58-T6-R8
S59-T6-R8
S60-T6-R8
S61-T6-R8
S62-T6-R8
S63-T6-R8
S64-T6-R8
S65-T6-R8
S66-T6-R8
S67-T6-R8
S68-T6-R8
S69-T6-R8
S70-T6-R8
S71-T6-R8
S72-T6-R8
S73-T6-R8
S74-T6-R8
S75-T6-R8
S76-T6-R8
S77-T6-R8
S78-T6-R8
S79-T6-R8
S80-T6-R8
S81-T6-R8
S82-T6-R8
S83-T6-R8
S84-T6-R8
S85-T6-R8
S86-T6-R8
S87-T6-R8
S88-T6-R8
S89-T6-R8
S90-T6-R8
S91-T6-R8
S92-T6-R8
S93-T6-R8
S94-T6-R8
S95-T6-R8
S96-T6-R8
S97-T6-R8
S98-T6-R8
S99-T6-R8
S100-T6-R8



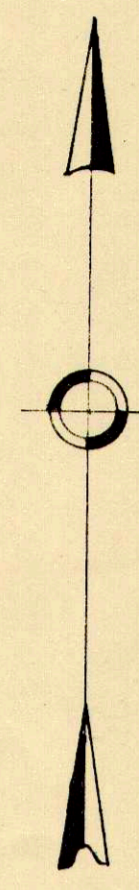
Crystal Beach
I.L. 10.5
(Ailes)



Handwritten notes:
 George B. Quatman I.L. 467
 George B. Quatman I.L. 438
 I.L. 439 (Brentlinger)
 I.L. 435 (Blinkley)
 I.L. 436 (Quatman)
 I.L. 437 (Blinkley)
 I.L. 438 (Quatman)
 I.L. 439 (Brentlinger)

Handwritten notes:
 Harry Grande I.L. 88
 Citizens Body Co





South Little Walnut Island.
Norman B. Lucas, et al
I.L. 547

Big Walnut Island

Sport Point (15)

Long Island
State Route 268 SH 920

Long Island
Fernwood Subdivision (16)

Emmett A. McClure et al
I.L. 638, Front of Lot 17

O'Connor Allotment (18)

Marysville Allotment (19)

O'Connor's Allotment No. 2 (17)

Garbage Island (17)

District Line

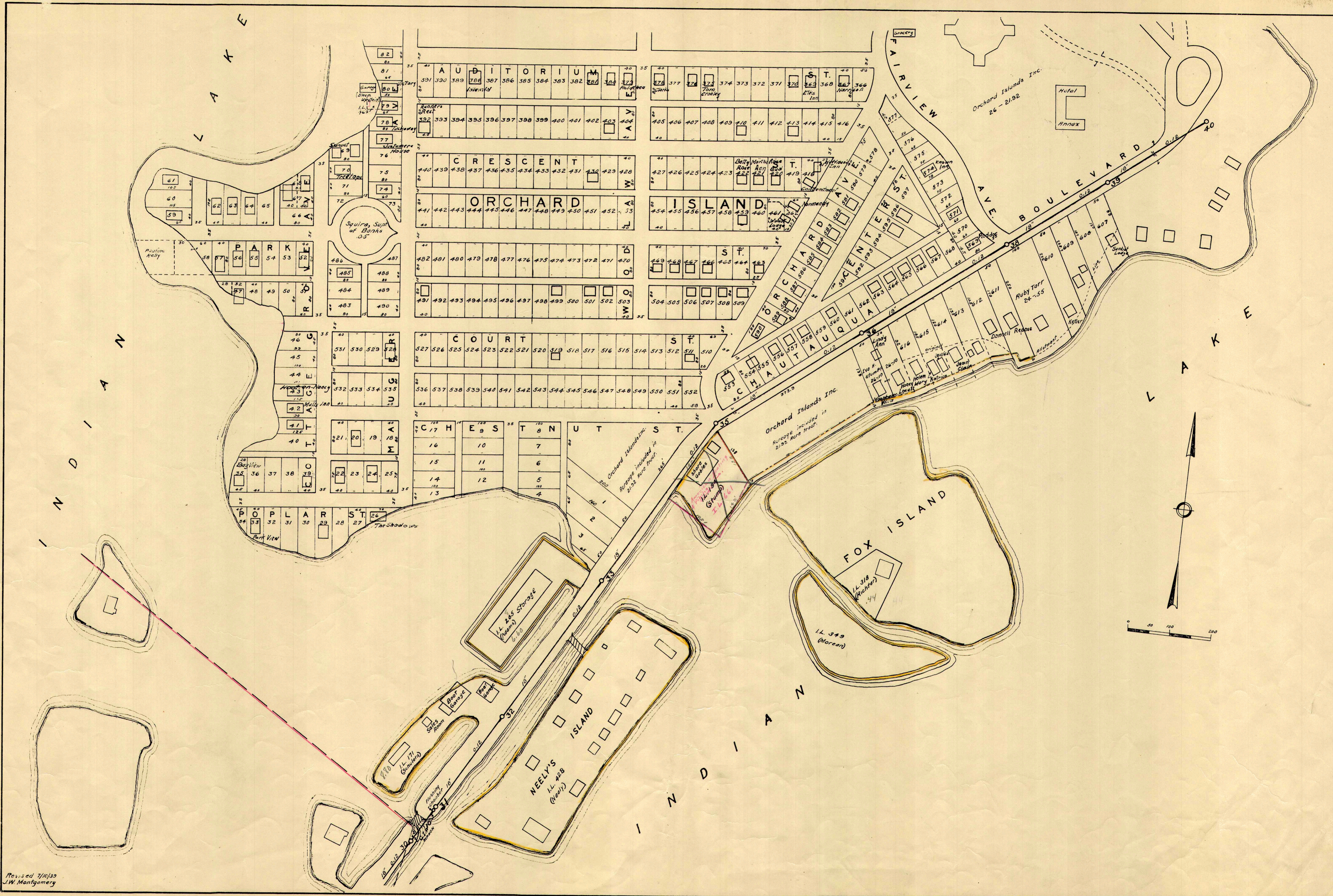
STOKES TOWNSHIP
RICHLAND TOWNSHIP

District Line

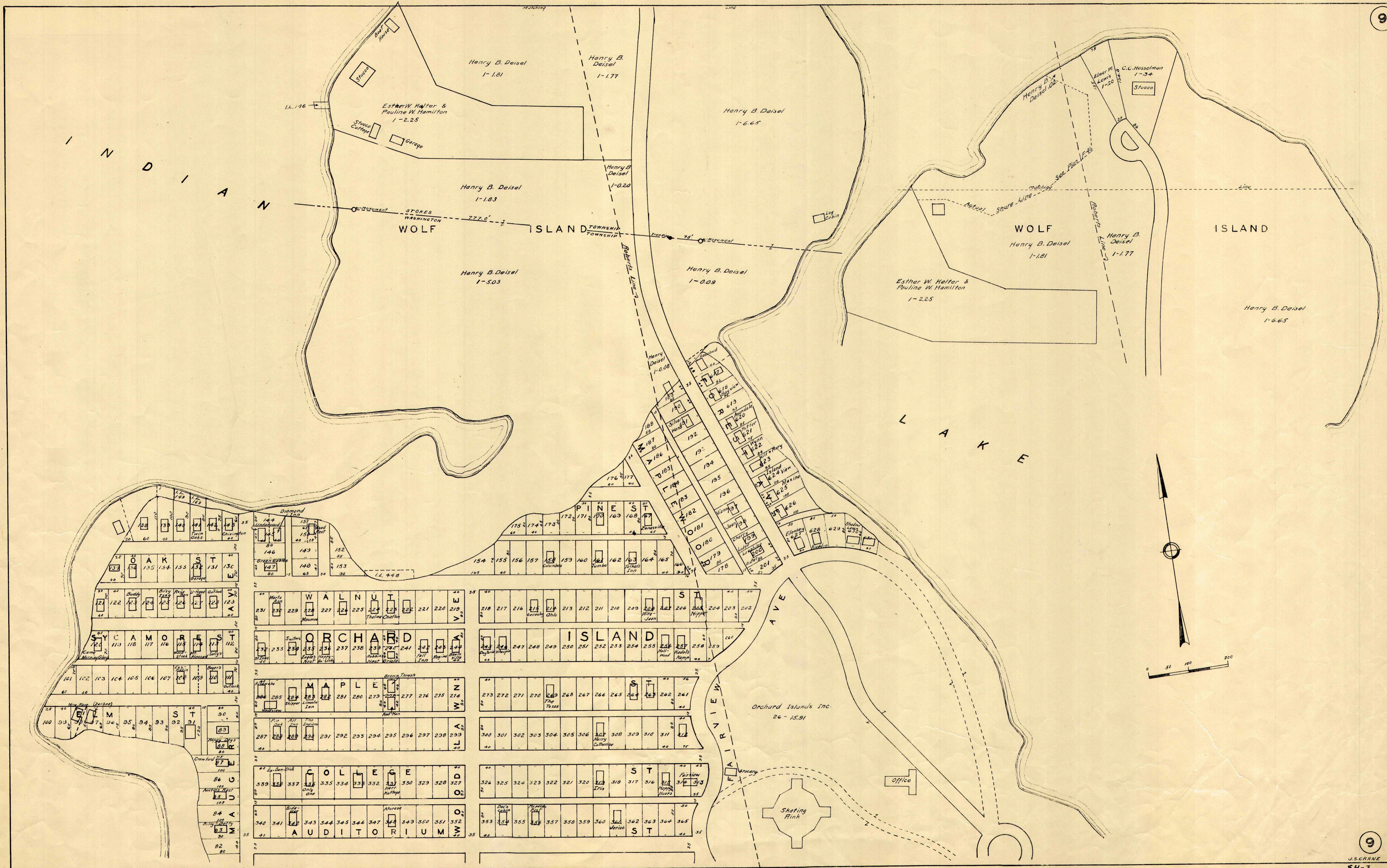
(21) Subdivision A
Turkey Foot Is.
State Route 608 SH 022

Shawnee Island (20)
Governor's Island

VMS 13393
CH 254
VMS 9968



Revised 7/10/39
J.W. Montgomery



Turkey Foot Is.
State Route S.H. 622

Garbage Island
#173

STOKES TOWNSHIP
WASHINGTON TOWNSHIP

State Route 368
S.H. 622

District Line

Orchard Island Allotment
13

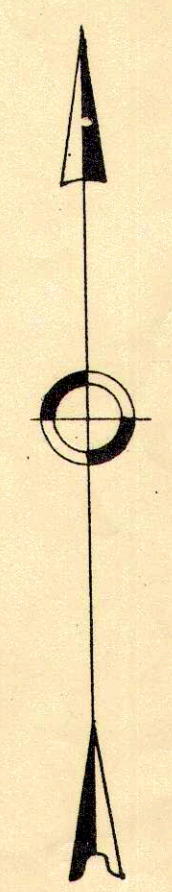
Mound Wood Allotment
23

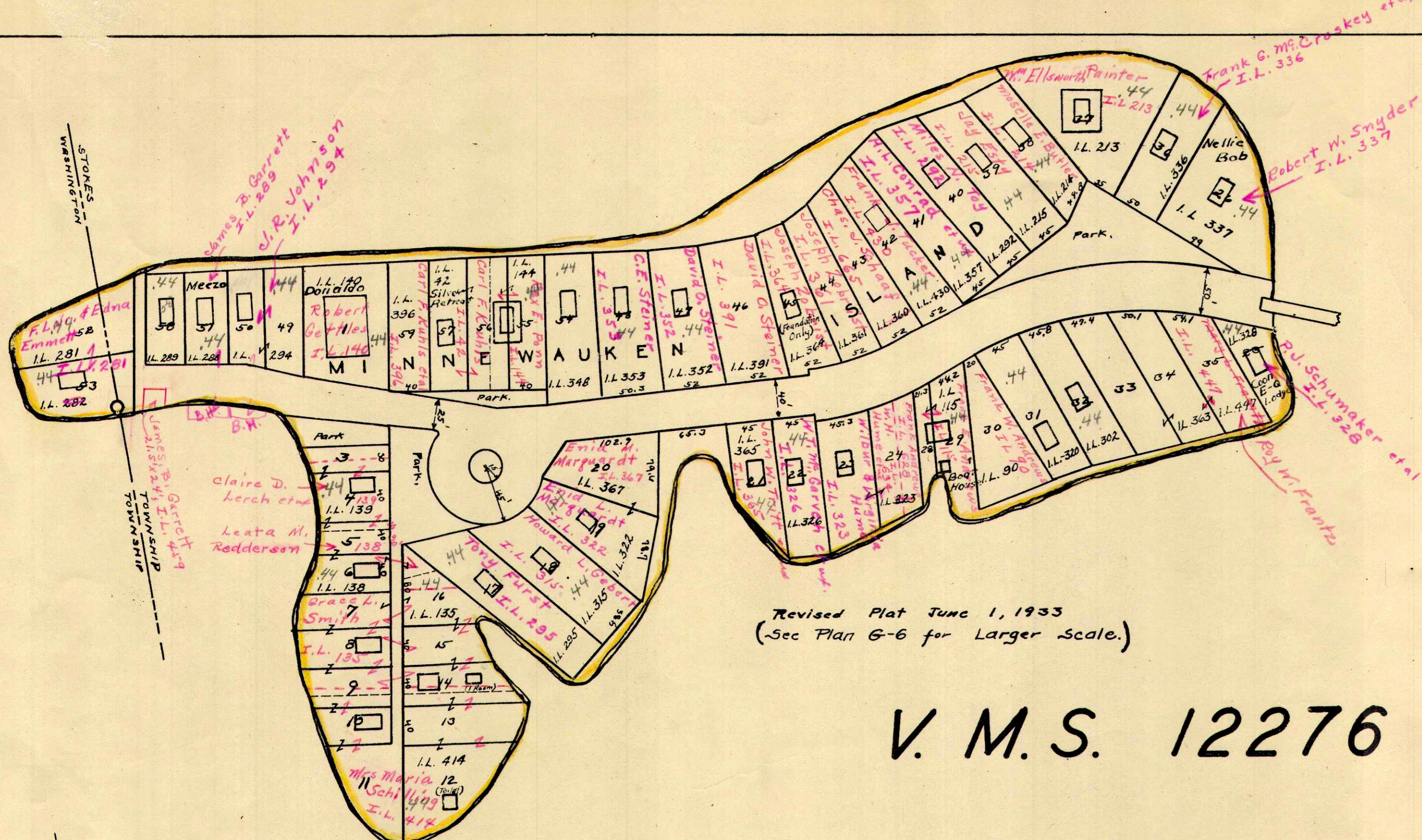
Priest Is.
176

Waterbury
24

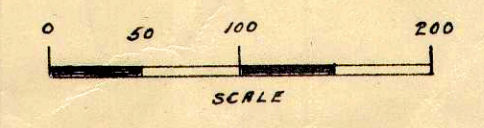
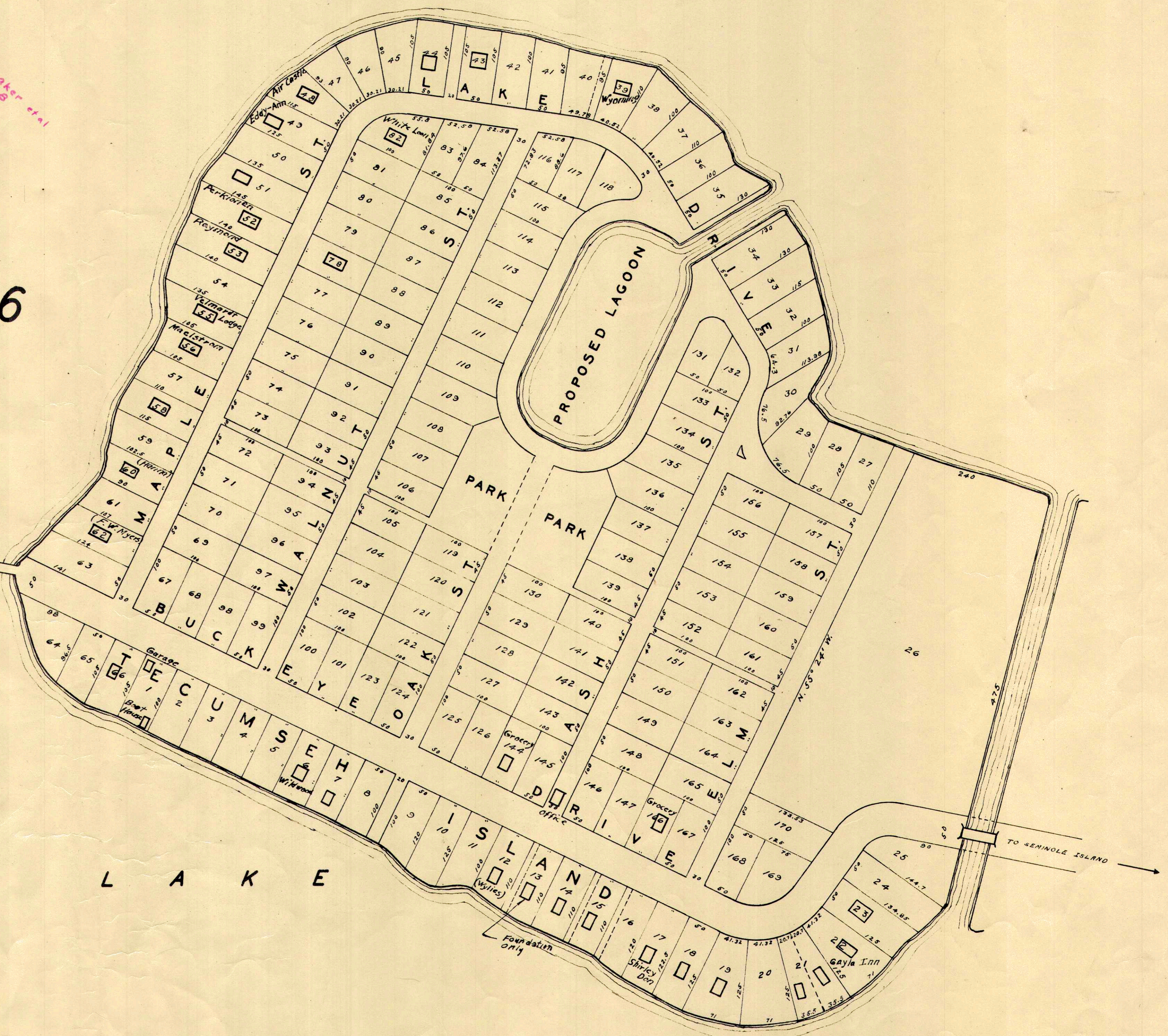
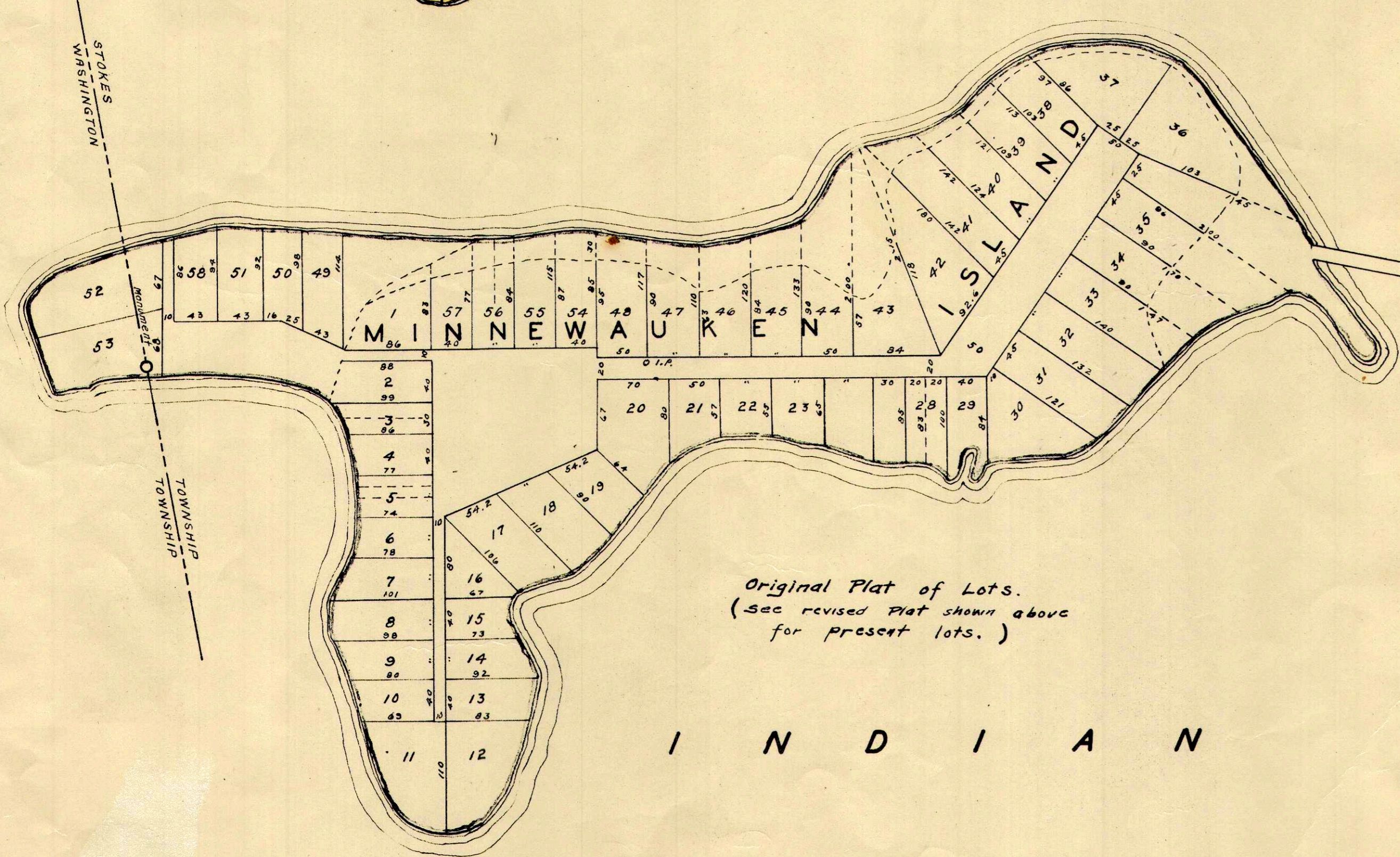
TON TOWNSHIP
LAND TOWNSHIP

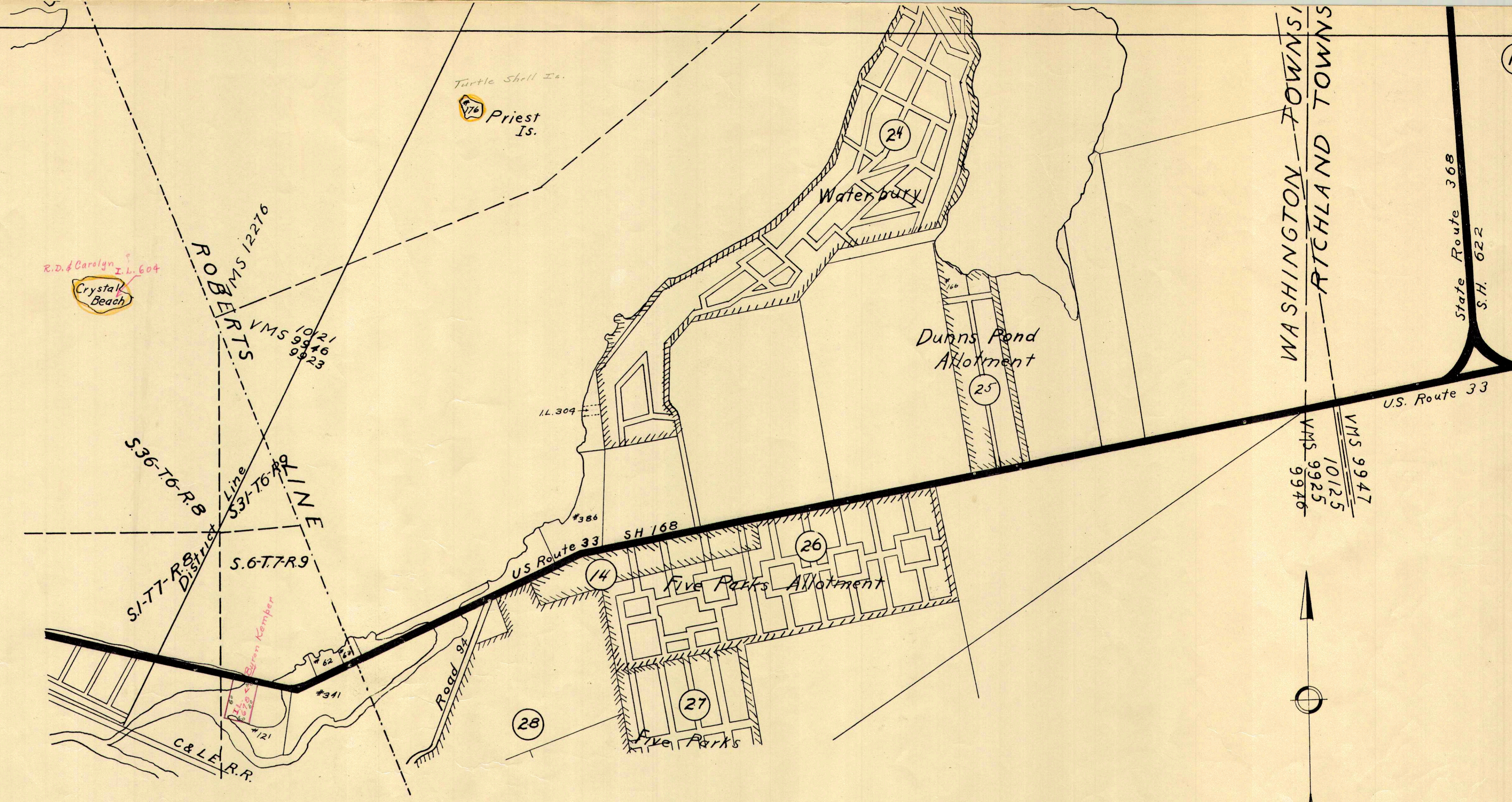
State Route 368
S.H. 622





V. M. S. 12276





R.D. & Carolyn I.L. 604
Crystal Beach

Turtle Shell Is.
Priest Is.

ROBERTS
VMS 12276
10121
9946
9923

KLINE
S.36-T6-R.8
S.37-T6-R.9
S.1-T7-R.8
S.6-T7-R.9

DUNN
S.1-T7-R.8

Watersbury

Dunns Pond Allotment

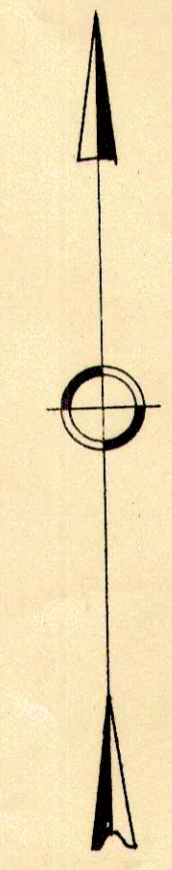
Five Parks Allotment

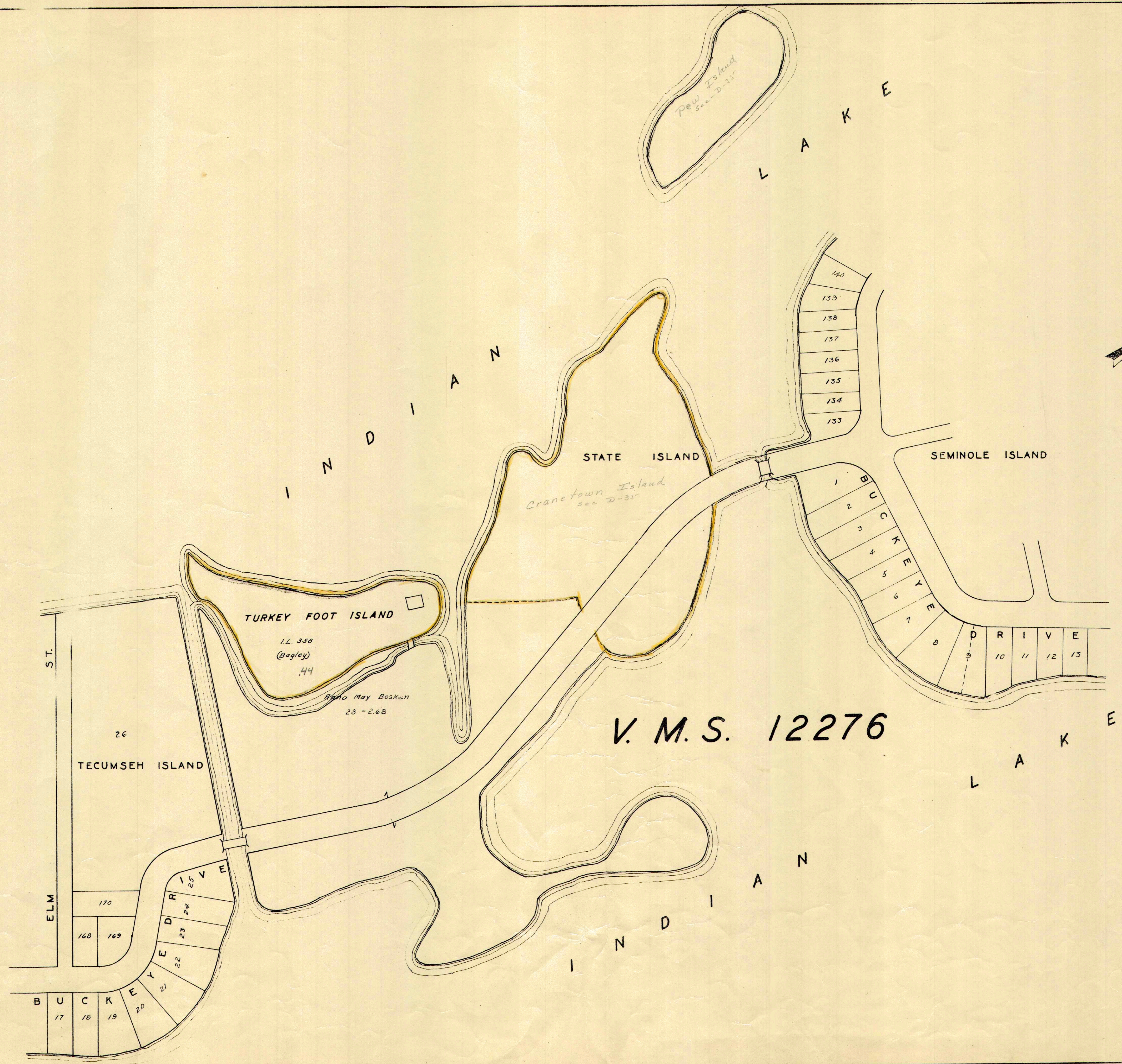
US Route 33

U.S. Route 33

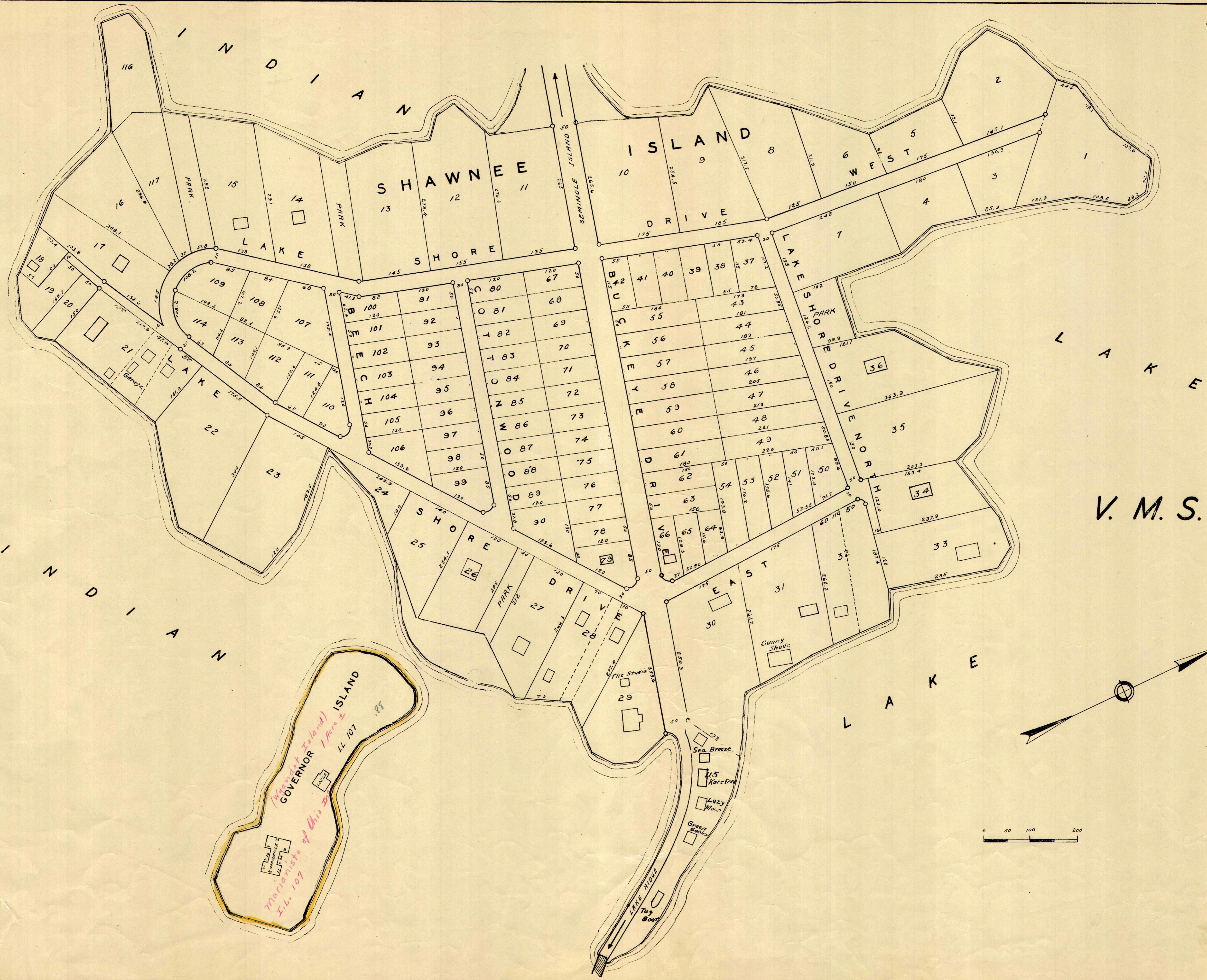
State Route 368
S.H. 622

VMS 9947
10125
9925
9946





V. M. S. 12276



V. M. S. 12276

(Marquette Island) ISLAND
 GOVERNOR
 1 Acre ±
 LL 107
 11/1/07
 Marquette of Ohio