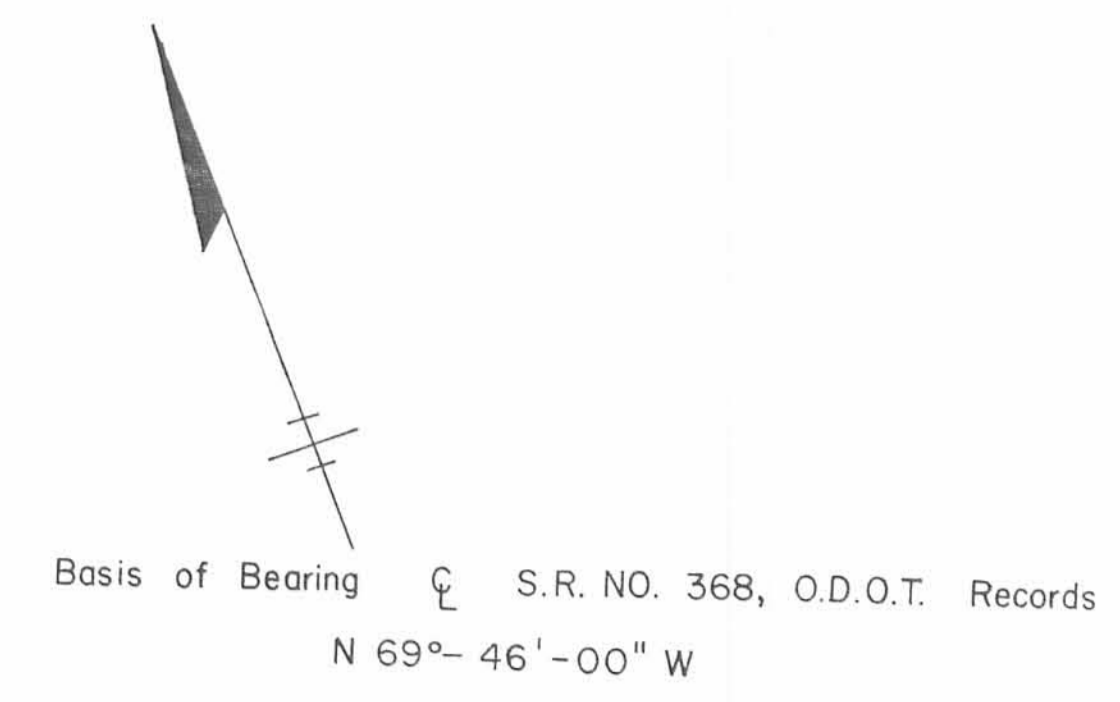
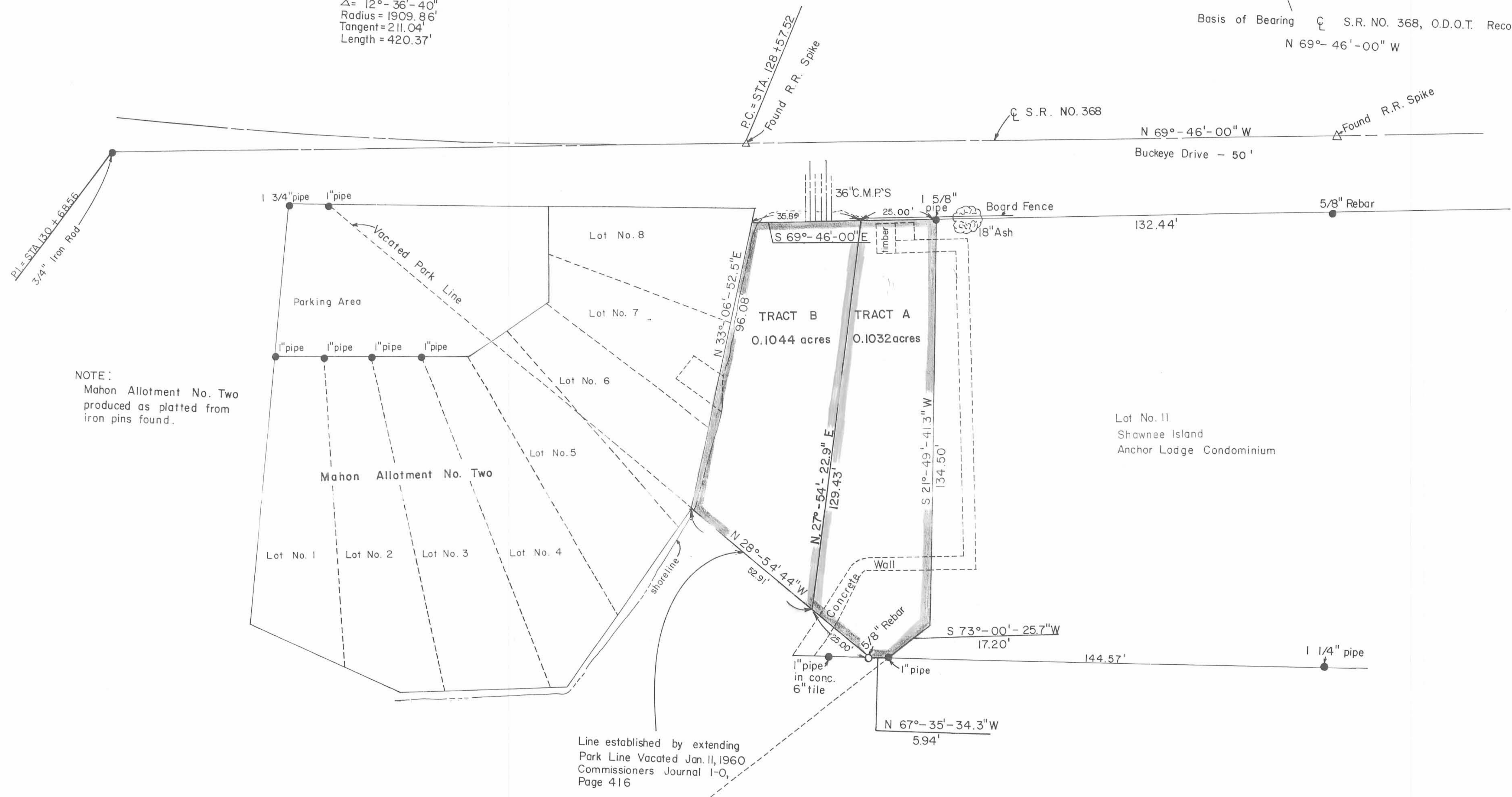


PUBLIC PARK BETWEEN SHAWNEE ISLAND AND SEMINOLE ISLAND
 STOKES TOWNSHIP
 LOGAN COUNTY, OHIO 1988
 VIRGINIA MILITARY SURVEY NO. 12276



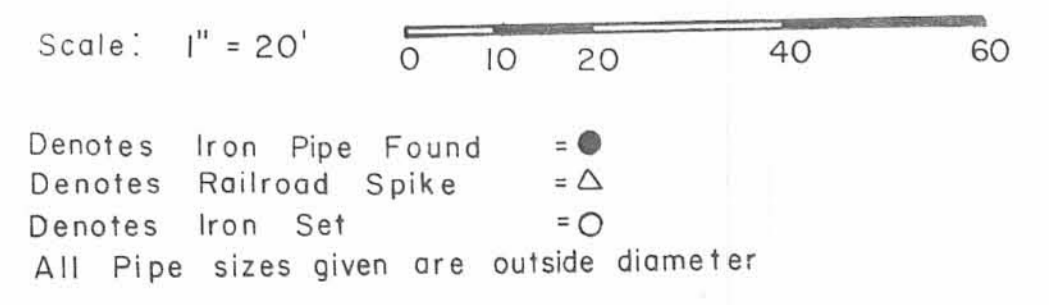
Curve Data
 $\Delta = 12^{\circ}-36'-40''$
 Radius = 1909.86'
 Tangent = 211.04'
 Length = 420.37'



NOTE:
 Mahon Allotment No. Two
 produced as platted from
 iron pins found.

Line established by extending
 Park Line Vacated Jan. 11, 1960
 Commissioners Journal I-O,
 Page 416

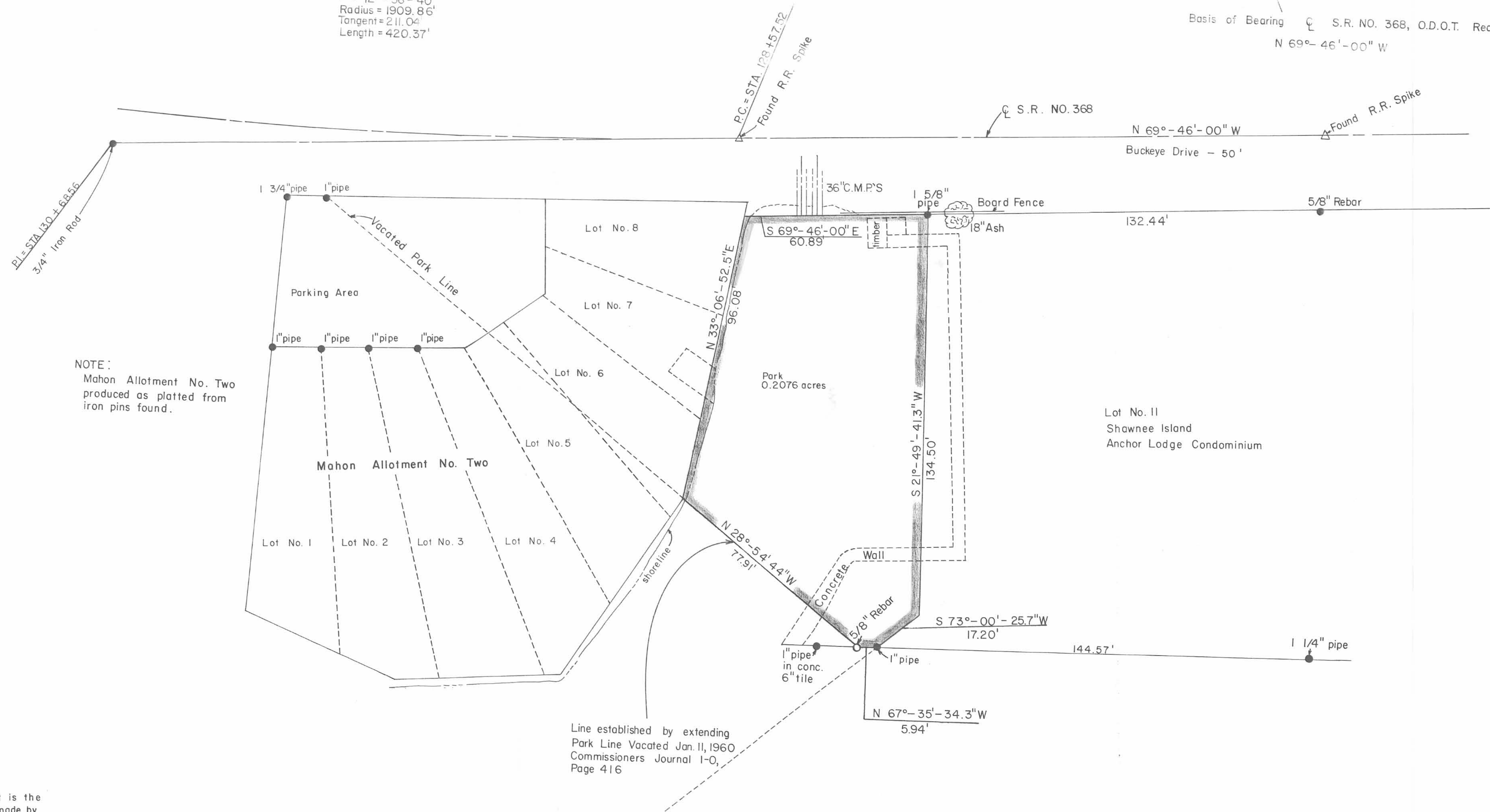
I hereby certify this plat is the
 result of a field survey made by
 the Logan County Engineer on
 September 2, 1987.
Chester R. Kurtz
 Chester R. Kurtz, P.E., P.S.
 Logan County Engineer
 Ohio Professional Surveyor No. 4849



PUBLIC PARK BETWEEN SHAWNEE ISLAND AND SEMINOLE ISLAND
 STOKES TOWNSHIP
 LOGAN COUNTY, OHIO 1988
 VIRGINIA MILITARY SURVEY NO. 12276

Curve Data
 $\angle = 12^{\circ}-36'-40''$
 Radius = 1909.86'
 Tangent = 211.04'
 Length = 420.37'

Basis of Bearing \angle S.R. NO. 368, O.D.O.T. Records
 $N 69^{\circ}-46'-00'' W$



NOTE:
 Mahon Allotment No. Two
 produced as platted from
 iron pins found.

I hereby certify this plat is the
 result of a field survey made by
 the Logan County Engineer on
 September 2, 1987.
Chester R. Kurtz
 Chester R. Kurtz, P.E., P.S.
 Logan County Engineer
 Ohio Professional Surveyor No. 4849

Scale: 1" = 20' 0 10 20 40 60
 Denotes Iron Pipe Found = ●
 Denotes Railroad Spike = △
 Denotes Iron Set = ○
 All Pipe sizes given are outside diameter