

ENGINEER'S CERTIFICATE

I hereby certify the annexed plat is a correct representation of the property described in Ordinance N^o 328 entitled "An Ordinance to authorize Annexation of Certain Territory to the Village of Belle Center, Logan County, Ohio" passed by the Council of the Village of Belle Center, Logan County, Ohio March 4, 1947.

Oliver A. Insberg

Registered Engineer N^o 4153

ACCEPTANCE

The annexed plat was approved and accepted by the Board of County Commissioners at a regular meeting July 21, 1947 and recorded in Journal 18 at page 254.

E. C. Webber
James S. Rutland
Roger C. Cloud
Commissioners of Logan County

AUDITOR'S OFFICE-LOGAN COUNTY, OHIO

Transfer not necessary.

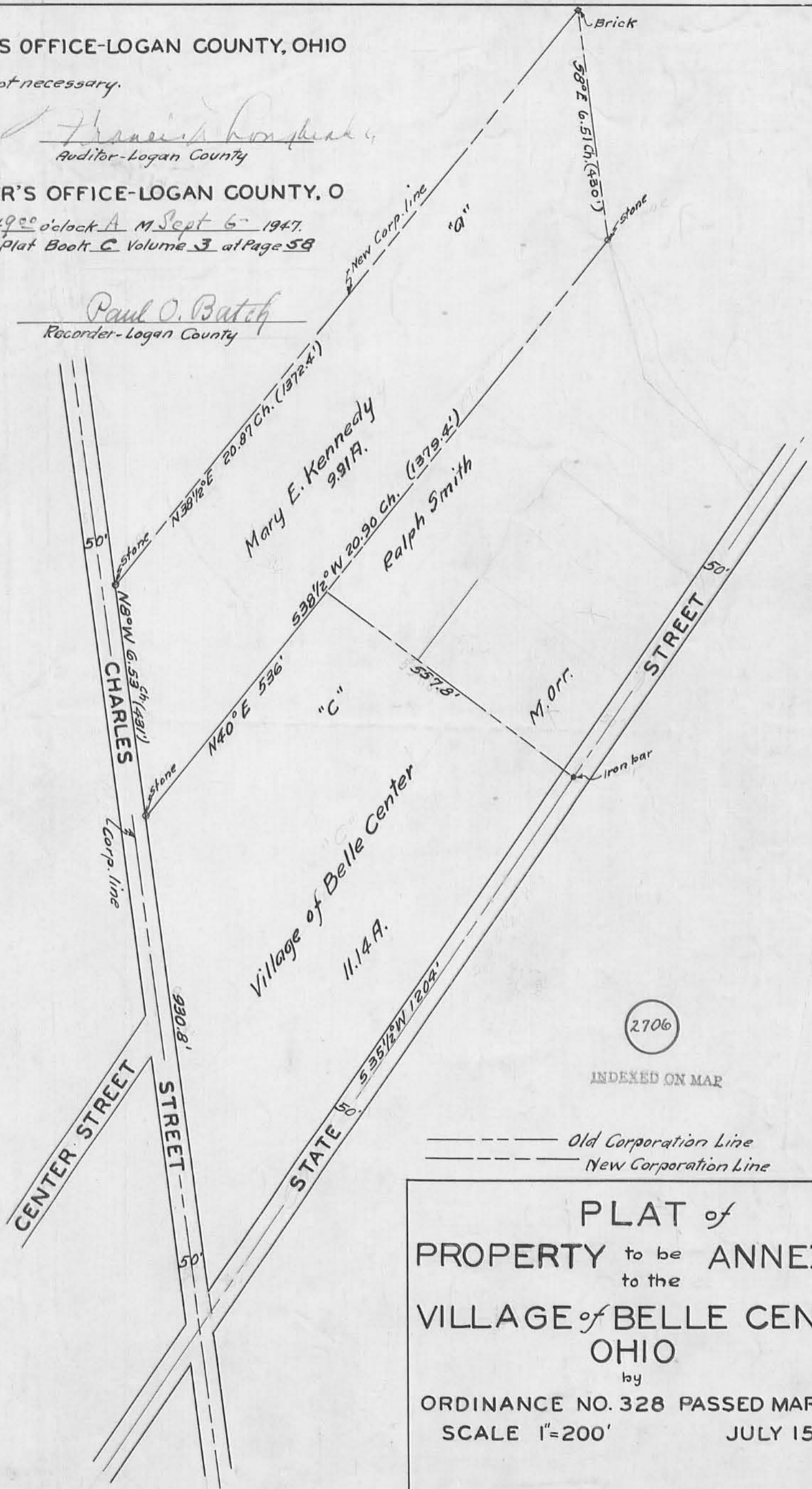
110150

RECORDER'S OFFICE-LOGAN COUNTY, O

Received at 9⁰⁰ o'clock A. M. Sept 6 1947.
Recorded in Plat Book C Volume 3 at Page 58

Paul O. Batch

Recorder-Logan County

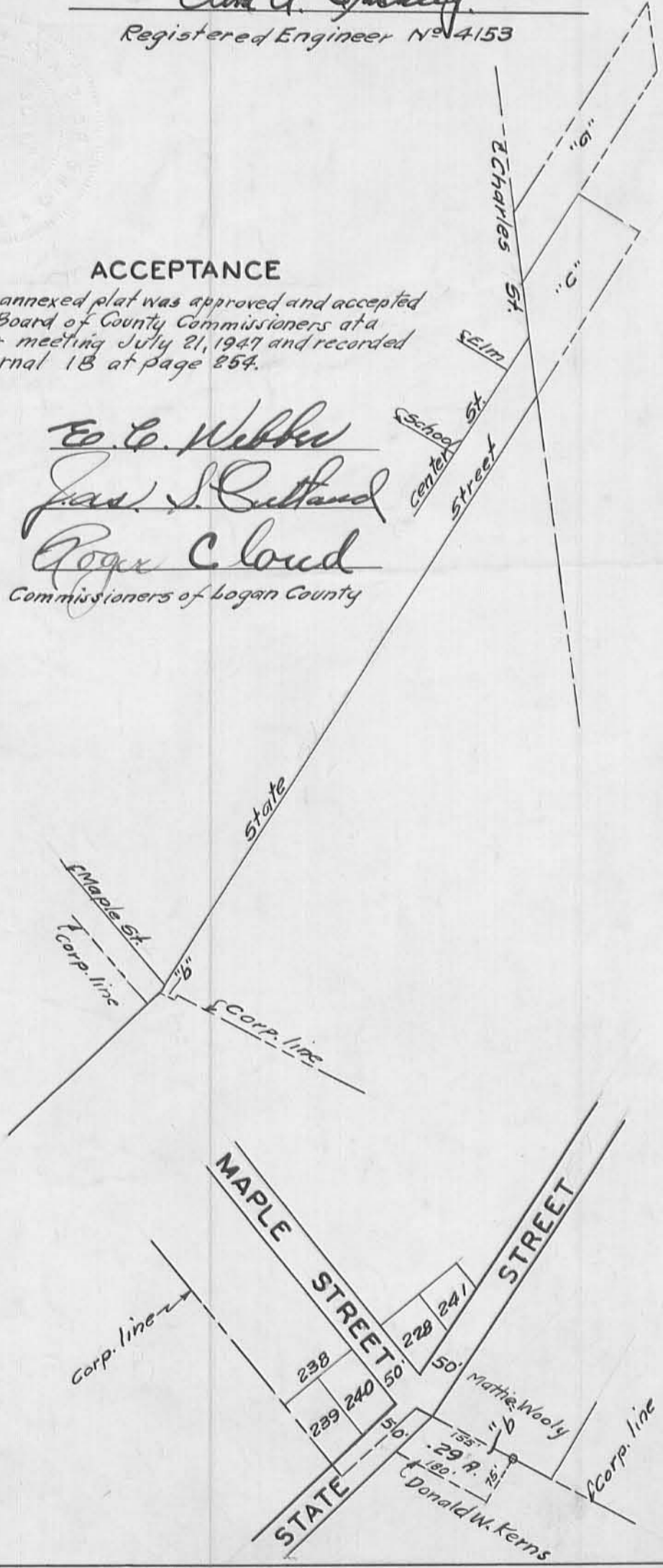


2706

INDEXED ON MAP

----- Old Corporation Line
----- New Corporation Line

PLAT of
PROPERTY to be ANNEXED
to the
VILLAGE of BELLE CENTER,
OHIO
by
ORDINANCE NO. 328 PASSED MARCH 4, 1947.
SCALE 1"=200' JULY 15, 1947.



3