

**SURVEYOR'S CERTIFICATE**

The accompanying plat represents a subdivision of land in Virginia Military Survey 9906, McArthur Township, Logan County, Ohio. The tract has an area of 17.33 acres in lots and 1.40 acres in C.H. No. 49 making a total of 18.73 acres. It indicates 3/8" Iron pins. All measurements are in feet and tenths of feet. I hereby certify that the accompanying plat is a correct representation of BATES SUBDIVISION, as surveyed August, 1956.

Dan R. Dodson  
Dan R. Dodson  
Registered Surveyor  
No. 4270

STATE OF OHIO      SS  
COUNTY OF FRANKLIN

Be it remembered that on this the 15<sup>th</sup> day of Sept., in the year of our Lord One Thousand Nine Hundred and Fifty Six, before me a notary public in and for said County, personally came Bertha H. Bates, grantor in the foregoing dedication and acknowledged the signing thereof to be her free and voluntary act and deed.

M. A. Bates  
Notary Public  
6-10-57  
My Commission Expires

**ACCEPTANCE**

The annexed plat is hereby approved and accepted by the Board of County Commissioners, at a regular meeting, this 15 day of Oct., 1956.

Hugh Robbuck  
Ray Kewney  
H. H. Lane  
Logan County Commissioners

**DEDICATION**

Know all men by these presents that Bertha H. Bates, proprietor of the land indicated on the accompanying plat, has authorized the platting thereof and does hereby dedicate the road to the public use forever.

John T. Hentz  
Dorothy L. Hentz  
Witness

Bertha H. Bates

**ENGINEER'S OFFICE**

Approved this 15 day of October, 1956

J. D. Miller  
Logan County Engineer

**AUDITOR'S OFFICE**

The within lots transferred this 25<sup>th</sup> day of October, 1956.

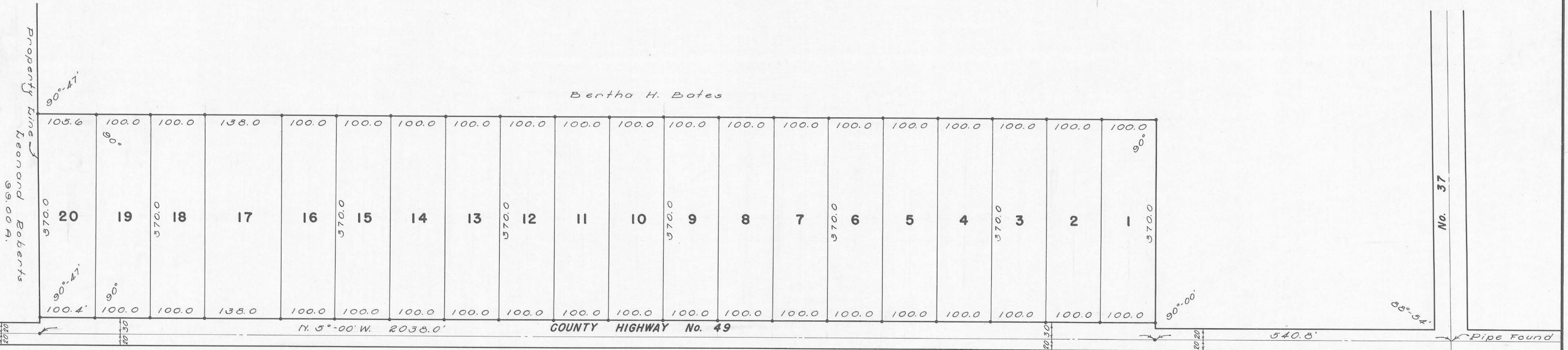
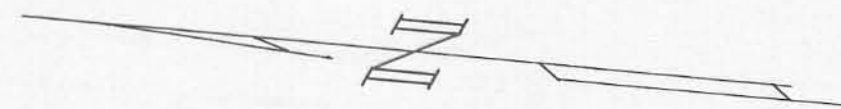
Harry C. Travis  
Logan County Auditor

**RECORDER'S OFFICE**

143670

Received for record at 10:45 o'clock A. M. on this 25<sup>th</sup> day of October, 1956.  
Recorded in Plat Book # D, Volume D, Page 35.

Rowan L. Strayer  
Logan County Recorder



**BATES SUBDIVISION**

VIRGINIA MILITARY SURVEY 9906

M<sup>o</sup>ARTHUR TOWNSHIP      LOGAN COUNTY

OHIO

SCALE 1" = 100'

