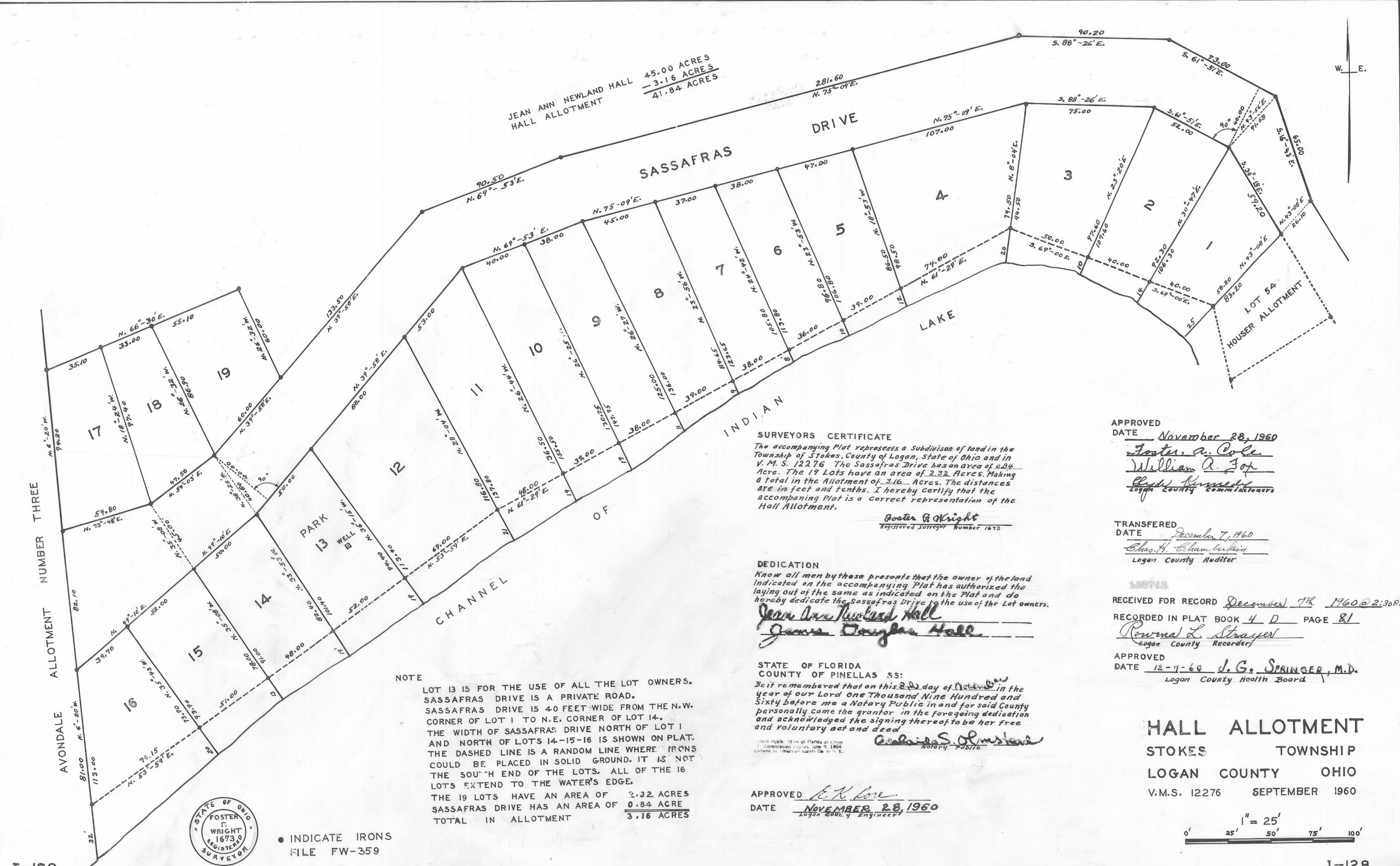


THIS TRACING TO BE FILED WITH LOGAN COUNTY ENGINEER



JEAN ANN NEWLAND HALL ALLOTMENT
45.00 ACRES
- 3.16 ACRES
41.84 ACRES

SURVEYORS CERTIFICATE
The accompanying Plat represents a subdivision of land in the Township of Stokes, County of Logan, State of Ohio and in V. M. S. 12276. The Sassafras Drive has an area of 0.84 Acre. The 19 Lots have an area of 2.32 Acres. Making a total in the Allotment of 3.16 Acres. The distances are in feet and tenths. I hereby certify that the accompanying Plat is a correct representation of the Hall Allotment.

Foster A. Wright
Registered Surveyor Number 1673

DEDICATION
Know all men by these presents that the owner of the land indicated on the accompanying Plat has authorized the laying out of the same as indicated on the Plat and do hereby dedicate the Sassafras Drive to the use of the Lot owners.

Jean Ann Newland Hall
James Douglas Hall

STATE OF FLORIDA
COUNTY OF PINELLAS SS:
Be it remembered that on this 22 day of November in the year of our Lord One Thousand Nine Hundred and Sixty before me a Notary Public in and for said County personally came the grantor in the foregoing dedication and acknowledged the signing thereof to be her free and voluntary act and deed.

Charles S. Olmstead
Notary Public

APPROVED *E. H. Love*
DATE NOVEMBER 28, 1960
Logan County Engineer

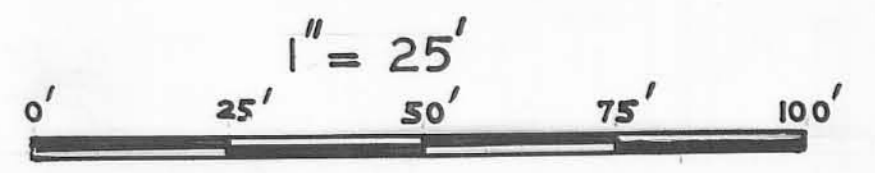
APPROVED
DATE November 28, 1960
Foster A. Cole
William A. Fox
Clyde Kennedy
Logan County Commissioners

TRANSFERRED
DATE December 7, 1960
Chas. H. Chamberlain
Logan County Auditor

RECEIVED FOR RECORD December 7th 1960 @ 2:30 P.M.
RECORDED IN PLAT BOOK 4 D PAGE 81
Ronald L. Strayer
Logan County Recorder

APPROVED
DATE 12-7-60 *J. G. Springer, M.D.*
Logan County Health Board

HALL ALLOTMENT
STOKES TOWNSHIP
LOGAN COUNTY OHIO
V.M.S. 12276 SEPTEMBER 1960



NOTE
LOT 13 IS FOR THE USE OF ALL THE LOT OWNERS. SASSAFRAS DRIVE IS A PRIVATE ROAD. SASSAFRAS DRIVE IS 40 FEET WIDE FROM THE N.W. CORNER OF LOT 1 TO N.E. CORNER OF LOT 14. THE WIDTH OF SASSAFRAS DRIVE NORTH OF LOT 1 AND NORTH OF LOTS 14-15-16 IS SHOWN ON PLAT. THE DASHED LINE IS A RANDOM LINE WHERE IRONS COULD BE PLACED IN SOLID GROUND. IT IS NOT THE SOUTH END OF THE LOTS. ALL OF THE 16 LOTS EXTEND TO THE WATER'S EDGE.
THE 19 LOTS HAVE AN AREA OF 2.32 ACRES
SASSAFRAS DRIVE HAS AN AREA OF 0.84 ACRE
TOTAL IN ALLOTMENT 3.16 ACRES

INDICATE IRONS
FILE FW-359

