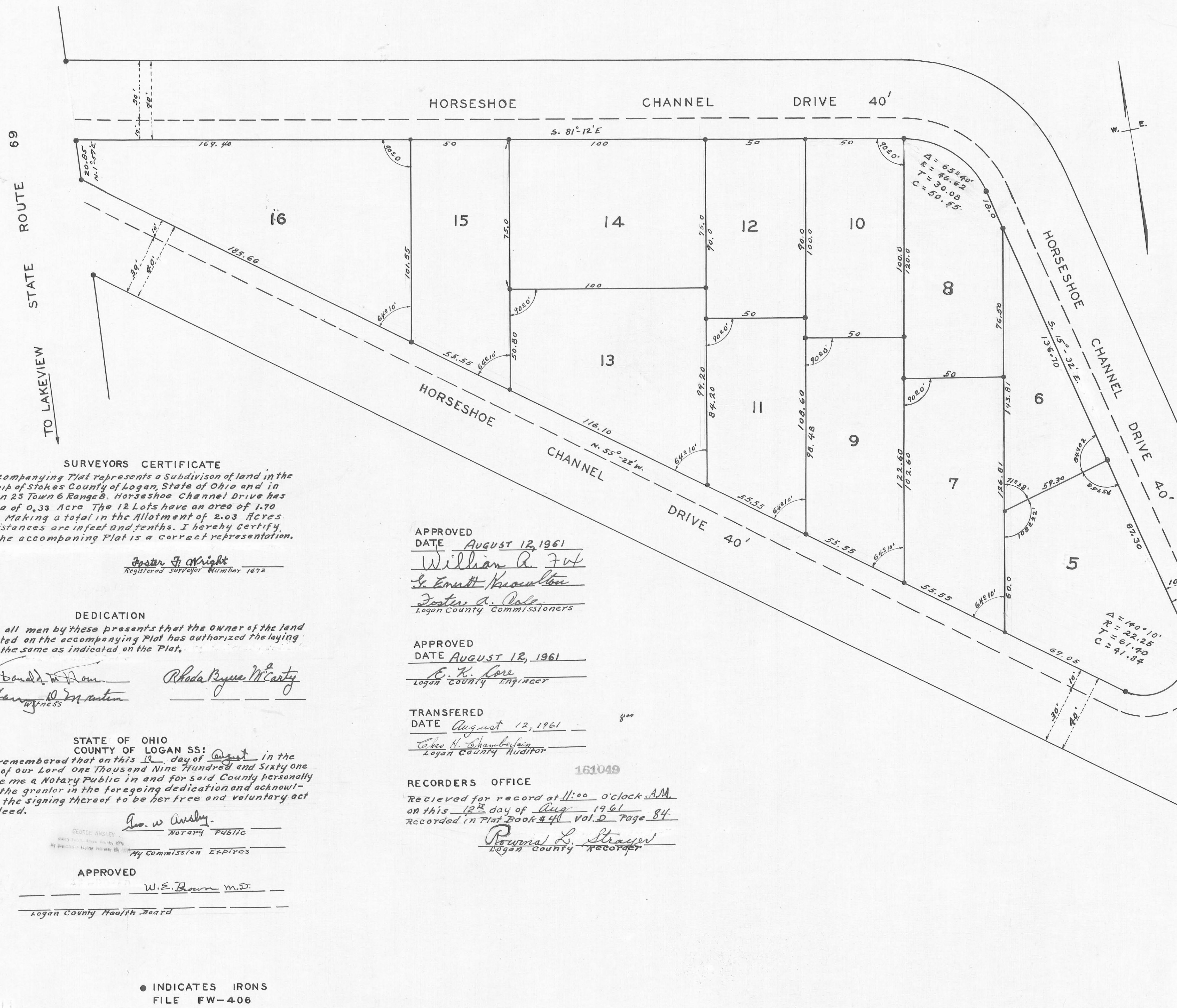


EXTENSION NUMBER ONE
OF
BYERS HORSESHOE CHANNEL
SUBDIVISION NUMBER ONE

STOKES TOWNSHIP
LOGAN COUNTY OHIO
SECTION 23 TOWN 6 S. RANGE 8 E.

AUGUST 1961 1" = 25'
0' 25' 50'



SURVEYORS CERTIFICATE

The accompanying Plat represents a Subdivision of land in the Township of Stokes County of Logan, State of Ohio and in Section 23 Town 6 Range 8. Horseshoe Channel Drive has an area of 0.33 Acre The 12 Lots have an area of 1.70 Acres. Making a total in the Allotment of 2.03 Acres. The distances are in feet and tenths. I hereby Certify that the accompanying Plat is a correct representation.

Foster F. Wright
Registered Surveyor Number 1673

DEDICATION

Know all men by these presents that the Owner of the land indicated on the accompanying Plat has authorized the laying out of the same as indicated on the Plat.

Donald W. Brown Rhoda Byrne McCarty
Witness

APPROVED
DATE AUGUST 12, 1961

William A. Felt
Logan County Commissioners

APPROVED
DATE AUGUST 12, 1961

E. K. Love
Logan County Engineer

TRANSFERRED
DATE August 12, 1961

Chas. N. Chamberlain
Logan County Auditor

RECORDERS OFFICE

Received for record at 11:00 o'clock A.M.
on this 12th day of Aug 1961
Recorded in Plat Book # 44 Vol. D Page 84

Paul L. Strayer
Logan County Recorder

STATE OF OHIO
COUNTY OF LOGAN SS:

Be it remembered that on this 12 day of August in the year of our Lord One Thousand Nine Hundred and Sixty one before me a Notary Public in and for said County personally came the grantor in the foregoing dedication and acknowledged the signing thereof to be her free and voluntary act and deed.

Geo. W. Ansley
NOTARY PUBLIC
My Commission Expires

APPROVED

W. E. Brown M.D.

Logan County Health Board

INDICATES IRONS
FILE FW-406



Note: Area of Horseshoe Channel Drive is for ten foot strip. Horseshoe Channel Drive is a Private Road.

This Tracing to be filed with Logan County Engineer.

Lots 2-3-4 as shown are in Byers Horseshoe Channel Drive Subdivision Number One.

COUNTY
4046
INDEX NO.