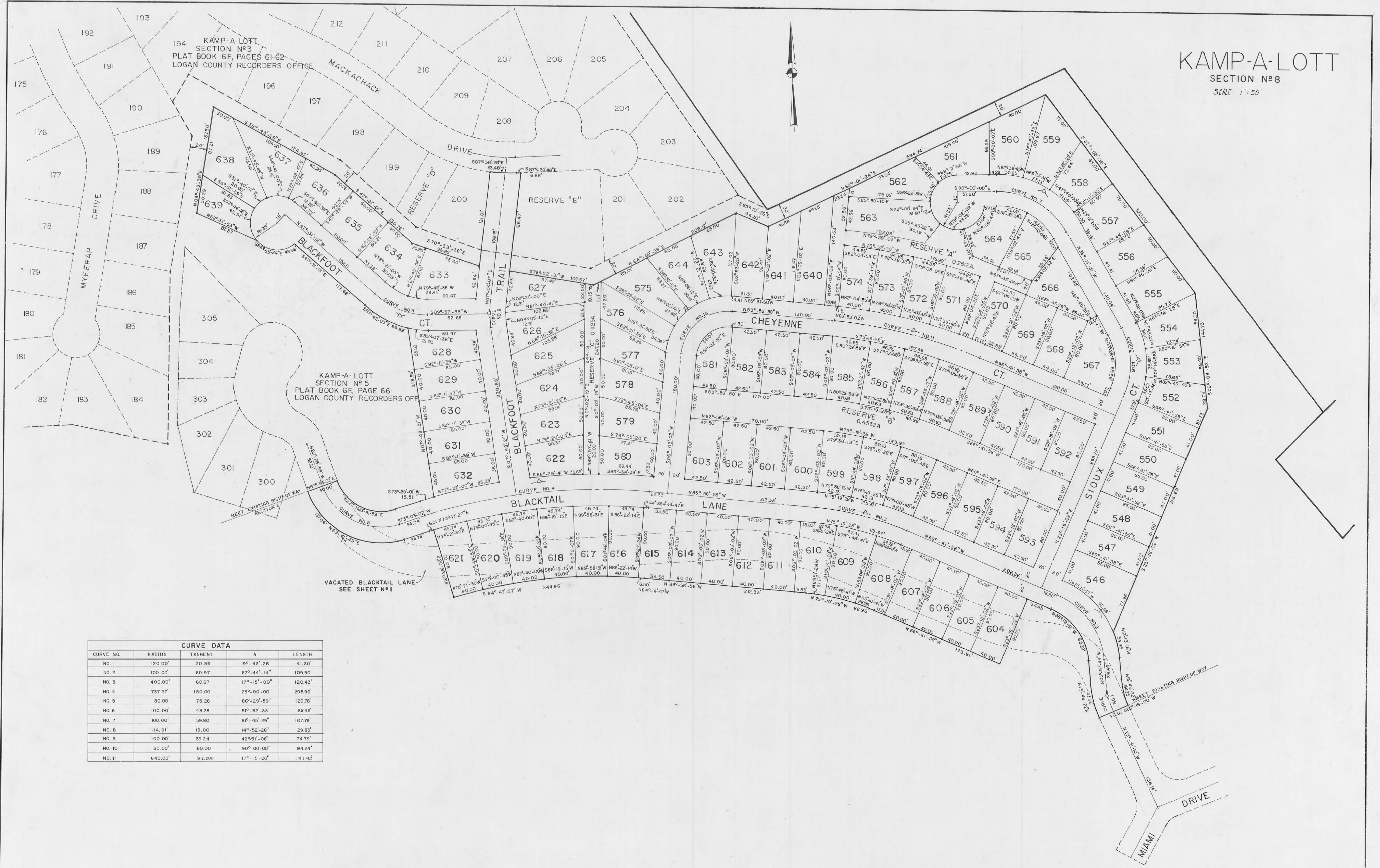


KAMP-A-LOTT

SECTION №8
SCALE 1"=50'

KAMP-A-LOTT
SECTION №3
PLAT BOOK 6F, PAGES 61-62
LOGAN COUNTY RECORDERS OFFICE

KAMP-A-LOTT
SECTION №5
PLAT BOOK 6F, PAGE 66
LOGAN COUNTY RECORDERS OFFICE



CURVE DATA				
CURVE NO.	RADIUS	TANGENT	Δ	LENGTH
NO. 1	120.00'	20.86	19°-43'-26"	41.30'
NO. 2	100.00'	60.97	62°-44'-14"	109.50'
NO. 3	400.00'	60.67	17°-15'-00"	120.43'
NO. 4	737.27'	150.00	23°-00'-00"	295.96'
NO. 5	80.00'	75.26	86°-29'-59"	120.78'
NO. 6	100.00'	48.28	51°-32'-33"	86.96'
NO. 7	100.00'	59.80	61°-45'-29"	107.79'
NO. 8	114.91'	15.00	14°-52'-28"	29.83'
NO. 9	100.00'	39.24	42°-51'-06"	74.79'
NO. 10	60.00'	60.00	90°-00'-00"	94.24'
NO. 11	640.00'	97.08	17°-15'-00"	191.96'

* 3/23/76 Revised Lot Numbers