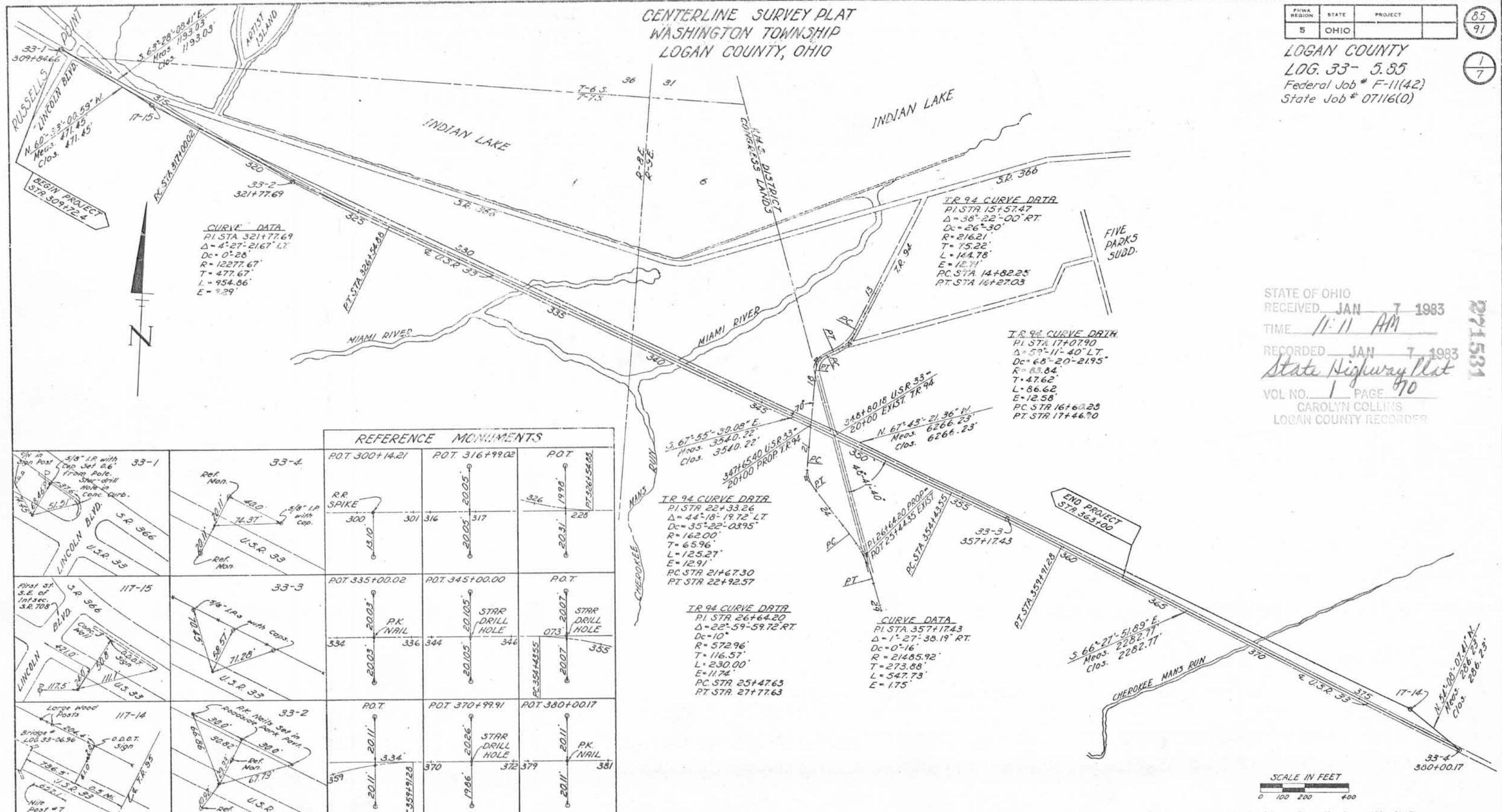


CENTERLINE SURVEY PLAT
WASHINGTON TOWNSHIP
LOGAN COUNTY, OHIO

FHWA REGION	STATE	PROJECT
5	OHIO	

85
91
1
7

LOGAN COUNTY
LOG. 33- 5.95
Federal Job # F-11(42)
State Job # 07116(0)



STATE OF OHIO
RECEIVED JAN 7 1983
TIME 11:11 AM
RECORDED JAN 7 1983
State Highway Plat
VOL. NO. 1 PAGE 90
CAROLYN COLLINS
LOGAN COUNTY RECORDER

071531

REFERENCE MONUMENTS

<p>33-1 5/8" I.P. with cap set 0.6' from pole. Star-drill hole in conc. curb. Meas. 471.45' Clos. 471.45'</p>	<p>33-4 Ref. Mon. 400' 74.37' 5/8" I.P. with cap.</p>	<p>POT 300+14.21</p>	<p>POT 316+99.02</p>	<p>POT 326+199.8</p>
<p>117-15 First st. S.E. of Int. sec. S.R. 708</p>	<p>33-3 3/8" I.P.s with caps. 57.0' 58.5' 71.28'</p>	<p>POT 335+00.02</p>	<p>POT 345+00.00</p>	<p>POT 355+00.00</p>
<p>117-14 Large wood posts. Bridge LOG 33-06.96</p>	<p>33-2 PK Nails set in roadside park post. Ref. Mon. 67.75'</p>	<p>POT 370+99.91</p>	<p>POT 380+00.17</p>	<p>POT 381+00.17</p>

SEC. ORD.	E. COORDINATE	N. COORDINATE	LONGITUDE	LATITUDE	REF. MON.	REMARKS
2nd	1619818.852	292597.628	83° 51' 58.57635"	40° 27' 41.85516"	117-14	5/8" I.P. with Plastic Cap, Buried 0.2'
1 2nd	1614020.682	294972.960	83° 53' 14.06616"	40° 28' 04.42017"	117-15	5/8" I.P. with Plastic Cap, Buried 0.2'
1 3rd	1613610.172	295204.740	83° 53' 19.42383"	40° 28' 06.64581"	33-1	PK Nail, POT Sta 309+84.66 & U.S.R. 33
1 3rd	1614677.513	294671.863	83° 53' 05.50690"	40° 28' 01.54907"	33-2	Star-drill Hole, P.I. Sta 321+77.69 U.S.R. 33
3rd	1617958.038	293341.448	83° 52' 22.79755"	40° 27' 48.91663"	33-3	Star-drill Hole, P.I. Sta 357+17.43 U.S.R. 33
3rd	1620050.801	292429.943	83° 51' 55.54138"	40° 27' 40.23560"	33-4	PK Nail, POT Sta 380+00.17 & U.S.R. 33

TR 94 CURVE DATA
PI STA 22+33.26
Δ = 44° 18' 19.72" RT
Dc = 35° 22' 03.95"
R = 162.00'
T = 65.96'
L = 125.27'
E = 12.91'
PC STA 21+67.30
PT STA 22+92.57

TR 94 CURVE DATA
PI STA 26+64.20
Δ = 22° 59' 59.72" RT
Dc = 10°
R = 572.96'
T = 116.57'
L = 230.00'
E = 11.74'
PC STA 25+47.63
PT STA 27+77.63

CURVE DATA
PI STA 357+17.43
Δ = 1° 27' 38.19" RT
Dc = 0° 16'
R = 21485.92'
T = 273.88'
L = 547.73'
E = 1.75'

TR 94 CURVE DATA
PI STA 15+57.47
Δ = 38° 22' 00" RT
Dc = 26° 30'
R = 21621'
T = 15.22'
L = 144.78'
E = 12.71'
PC STA 14+82.25
PT STA 16+27.03

TR 94 CURVE DATA
PI STA 17+07.90
Δ = 59° 11' 40" LT
Dc = 68° 20' 21.95"
R = 83.84'
T = 47.62'
L = 86.62'
E = 12.58'
PC STA 16+62.28
PT STA 17+46.70



Based On Ohio State Plane Coordinates - North Zone.
Conversion Factor ~ 0.9999466.
All Bearings Are Grid Bearings.
All Measurements Ground Distances.

INDEXED
6801
ON MAP

RECORDED
LOGAN CO.
Date: 1-13-83
Vol: 1
Page: 70
I hereby Certify That This Plat Is A True Delineation Of A Survey Made By The Ohio Department Of Transportation In 1980.
Richard R. Helmlinger
Richard R. Helmlinger - Reg. Surveyor # 5421