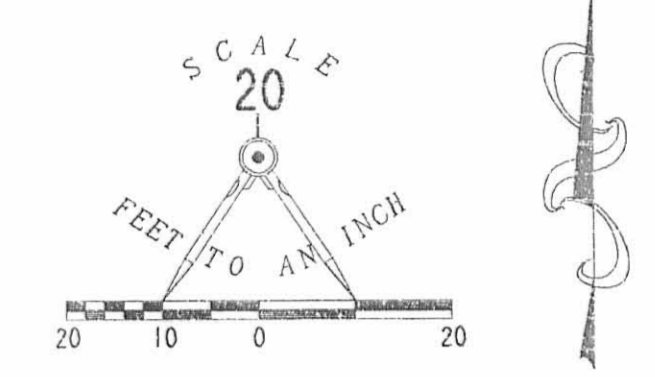
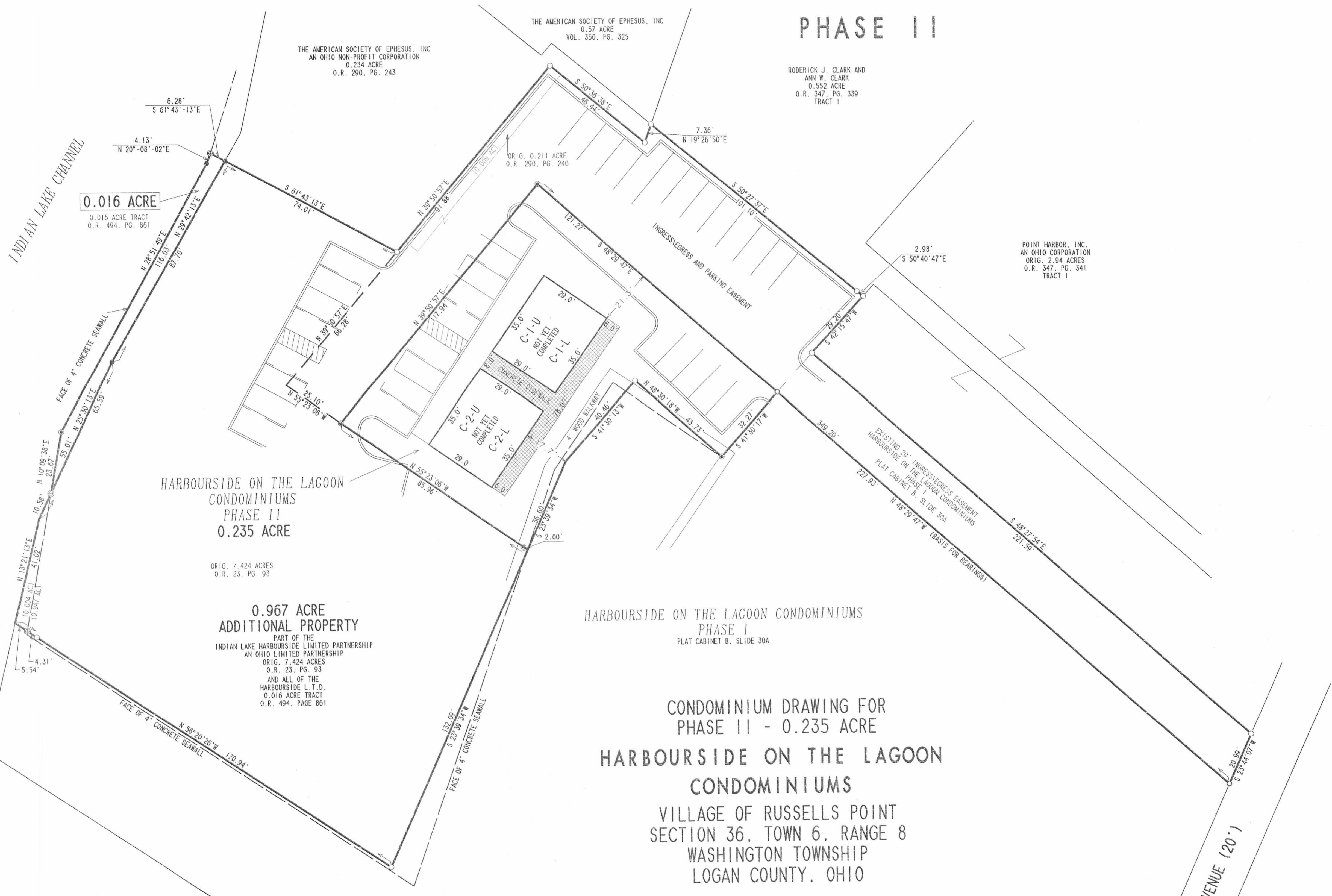


HARBOURSIDE ON THE LAGOON CONDOMINIUMS

PHASE II



- LEGEND**
- 5/8 INCH IRON ROD SET
 - 5/8 INCH IRON ROD FOUND
 - ⊙ MAG NAIL SET
 - ⊕ CHISELED 'X' IN CONCRETE SET
 - DRILL HOLE IN CONCRETE FOUND
 - ▨ LIMITED COMMON AREA

HARBOURSIDE ON THE LAGOON
CONDOMINIUMS
PHASE II
0.235 ACRE

ORIG. 7.424 ACRES
O.R. 23, PG. 93

0.967 ACRE
ADDITIONAL PROPERTY
PART OF THE
INDIAN LAKE HARBOURSIDE LIMITED PARTNERSHIP
AN OHIO LIMITED PARTNERSHIP
ORIG. 7.424 ACRES
O.R. 23, PG. 93
AND ALL OF THE
HARBOURSIDE L.T.D.
0.016 ACRE TRACT
O.R. 494, PAGE 861

HARBOURSIDE ON THE LAGOON CONDOMINIUMS
PHASE I
PLAT CABINET B, SLIDE 30A

CONDOMINIUM DRAWING FOR
PHASE II - 0.235 ACRE
HARBOURSIDE ON THE LAGOON
CONDOMINIUMS
VILLAGE OF RUSSELLS POINT
SECTION 36, TOWN 6, RANGE 8
WASHINGTON TOWNSHIP
LOGAN COUNTY, OHIO

PART OF THE
INDIAN LAKE HARBOURSIDE LIMITED PARTNERSHIP
AN OHIO LIMITED PARTNERSHIP
ORIGINAL 7.424 ACRES
OFFICIAL RECORD 23, PAGE 93
AND ORIGINAL 0.211 ACRE
OFFICIAL RECORD 290, PAGE 240

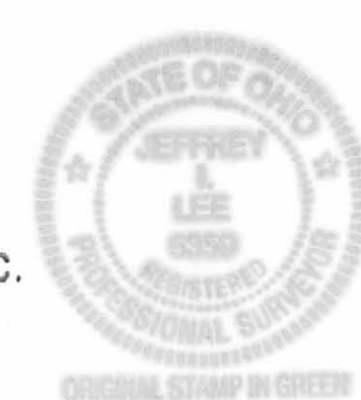
WE DO HEREBY STATE THAT THESE DRAWINGS OF HARBOURSIDE ON THE LAGOON
CONDOMINIUMS, PHASE II SHOW ALL BUILDINGS AS CONSTRUCTED.

Michael W. Bow
MICHAEL W. BOW
PROFESSIONAL ENGINEER 38860
FEBRUARY 21, 2001

Jeffrey I. Lee
JEFFREY I. LEE
PROFESSIONAL SURVEYOR 6359
FEBRUARY 21, 2001

THE M & K ENGINEERING CO.
1691 T.R. 31 NORTH
BELLEFONTAINE, OHIO 43311
(937) 592-2697

LEE SURVEYING AND MAPPING CO., INC.
117 NORTH MADRIVER STREET
BELLEFONTAINE, OHIO, 43311
(937) 593-7335



APPROVED BY THE VILLAGE OF RUSSELLS POINT
PLANNING COMMISSION
THIS 31ST DAY OF July, 2001

John J. Gaudin
PRES., PLANNING COMMISSION

PLAT CHECKED *Jon C. Hines* 7-31-01

DESCRIPTION CHECKED *Suzanne M. Vesting* 7-31-01

TRANSFERRED THIS 1ST DAY OF August, 2001

Michael E. Gowan
AUDITOR, LOGAN COUNTY, OHIO

RECORDED IN PLAT CABINET B, SLIDE 64A-64B
RECEIVED FOR RECORD AT 8:49 O'CLOCK A.M.

THIS 1ST DAY OF August, 2001

Linda Hanson
RECORDER, LOGAN COUNTY, OHIO

INDIAN LAKE SANITARY SEWER DISTRICT

COPYRIGHT 2001 BY:
LEE SURVEYING & MAPPING CO., INC.
117 North Madriver Street
Bellefontaine, Ohio 43311
(937) 593-7335
D-396 HRBRSD2 L-1134-1
HRBRSD.DAT
PRINTED: JULY 20, 2001

2 WORKING DAYS
BEFORE YOU DIG
CALL TOLL FREE 800-362-2764
OHIO UTILITIES PROTECTION SERVICE.

200/0007473

PREPARED BY:

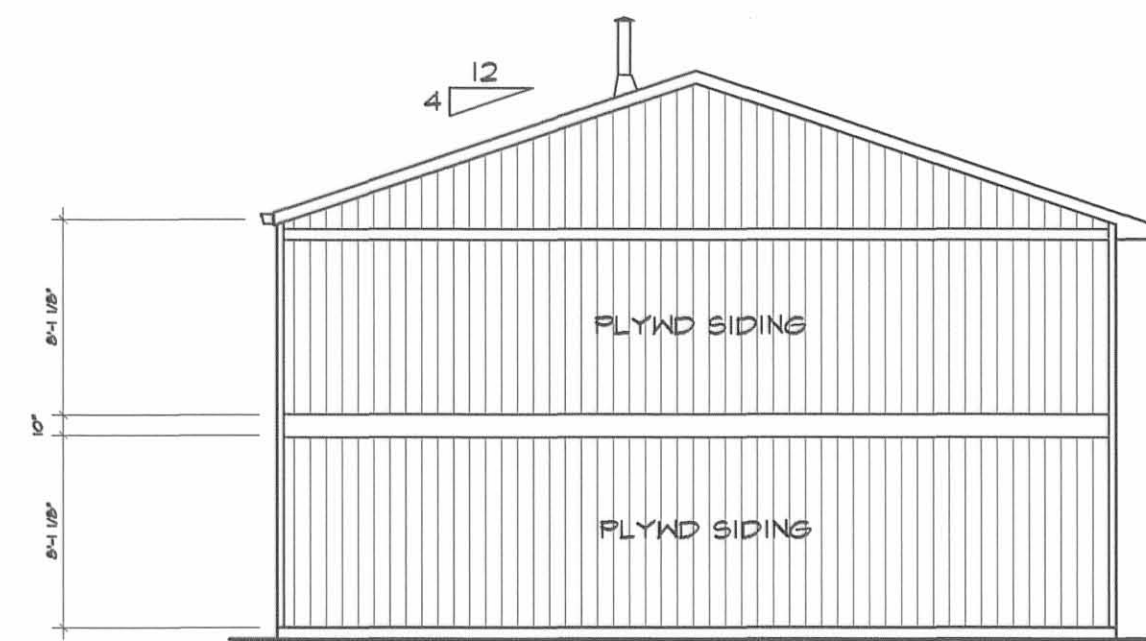
Michael W. Bow
 MICHAEL W. BOW, P.E.
 THE M&K ENGINEERING CO.

6/28/2001
 DATE



WATER SIDE ELEVATION FRONT

SCALE: 1/8" = 1'-0"



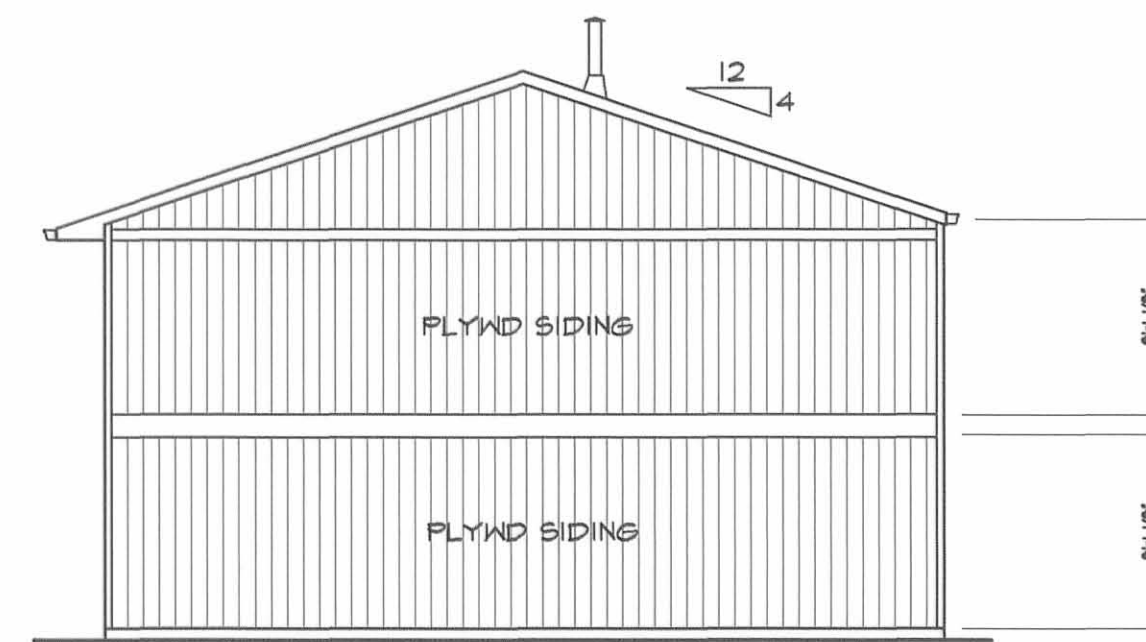
SIDE ELEV RIGHT

SCALE: 1/8" = 1'-0"



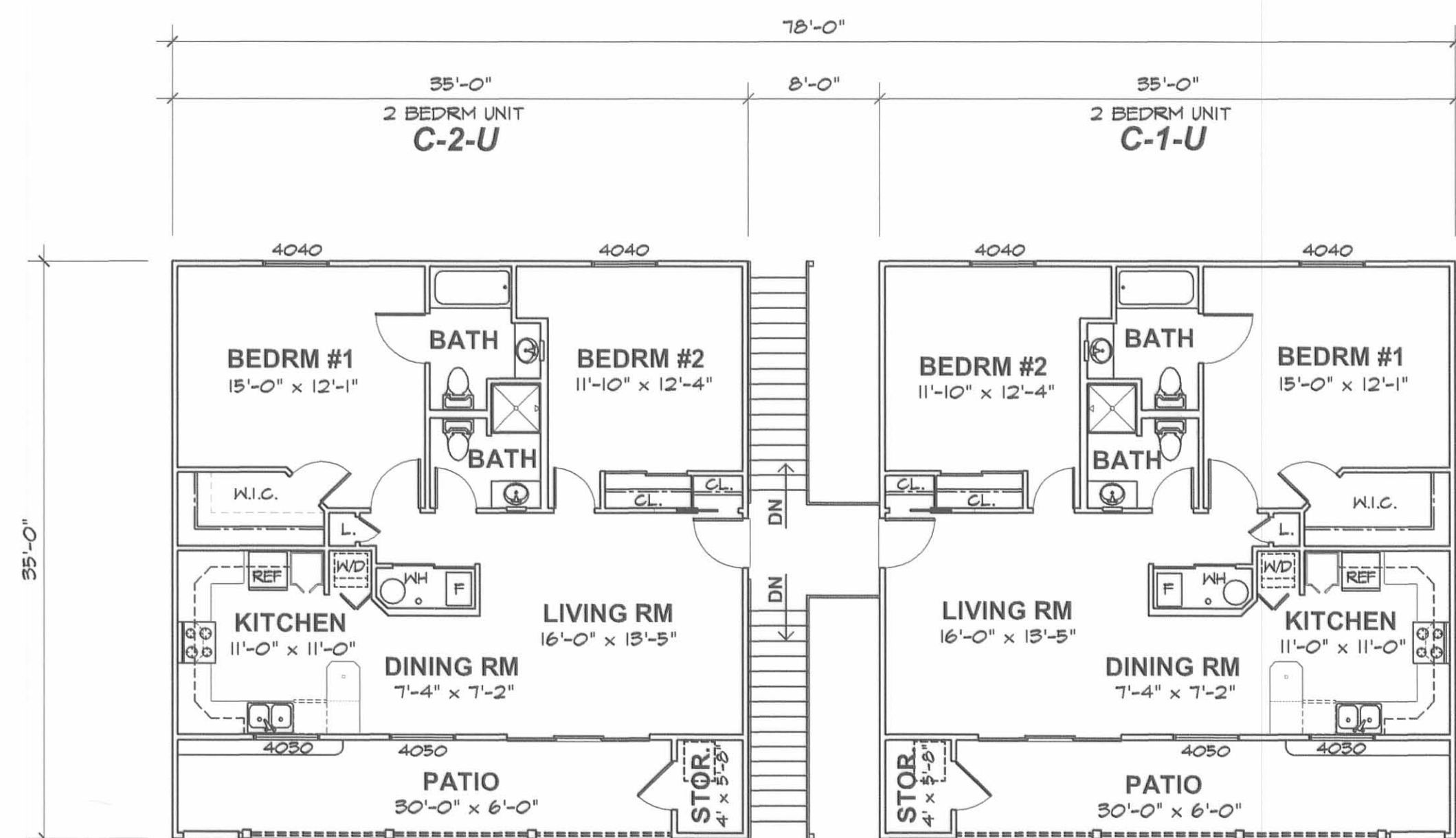
PARKING SIDE ELEVATION REAR

SCALE: 1/8" = 1'-0"



SIDE ELEV LEFT

SCALE: 1/8" = 1'-0"

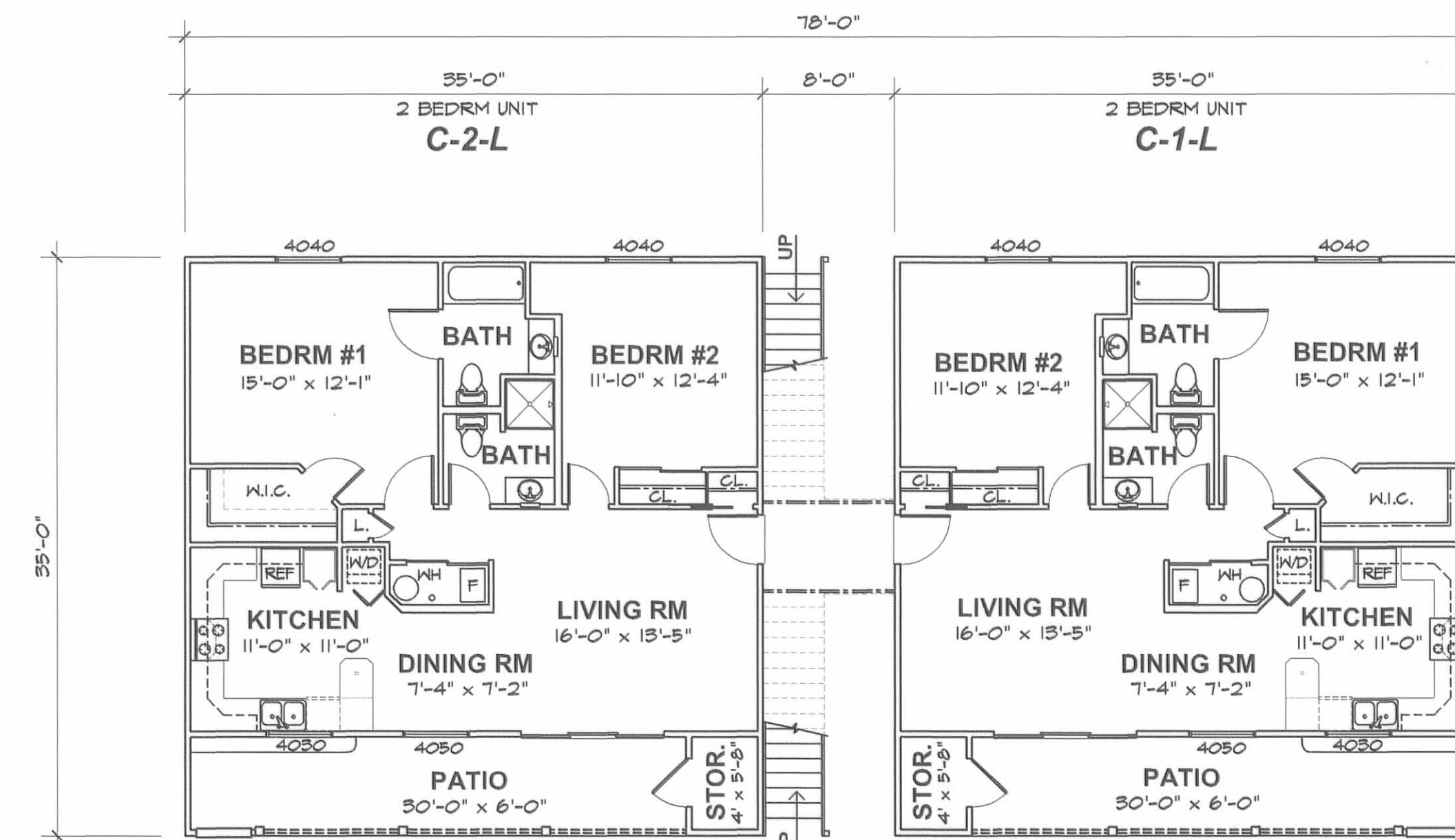


SECOND FLOOR PLAN

SCALE: 1/8" = 1'-0"

UNIT DESIGNATION DESCRIPTION:

C-1-U = BUILDING "C"
 CONDO #1
 UPPER LEVEL



FIRST FLOOR PLAN

SCALE: 1/8" = 1'-0"

UNIT DESIGNATION DESCRIPTION:

C-1-L = BUILDING "C"
 CONDO #1
 LOWER LEVEL