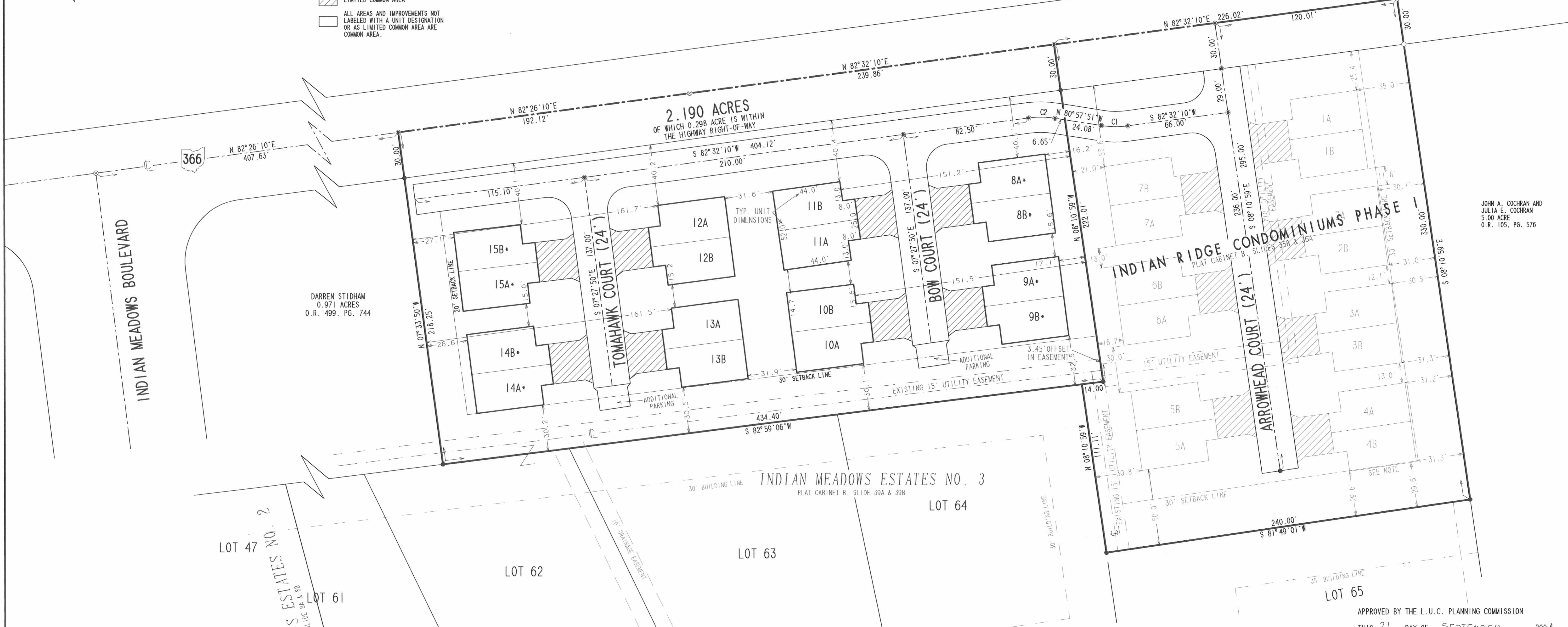


- LEGEND**
- 5/8" IRON ROD SET
 - 5/8" IRON ROD FOUND
 - ⊙ MAG NAIL SET
 - ⊗ RAILROAD SPIKE FOUND
 - 12A UNIT NUMBER
 - ▨ LIMITED COMMON AREA
 - ALL AREAS AND IMPROVEMENTS NOT LABELED WITH A UNIT DESIGNATION OR AS LIMITED COMMON AREA ARE COMMON AREA.

REFERENCES
 LOGAN COUNTY ENGINEER'S FILES:
 PLAT OF INDIAN MEADOWS NO. 2
 PLAT CABINET B, SLIDE 8A & 82
 OK SHIRKS BOOK 9, PAGES 43 & 42
 R-3878

CURVE	DELTA ANGLE	RADIUS	ARC	TANGENT	CHORD	CHORD BEARING
C 1	16°30'00"	60.00'	17.28'	8.70'	17.22'	N 89°12'51"W
C 2	16°30'00"	60.00'	17.28'	8.70'	17.22'	N 89°12'51"W



DARREN STIDHAM
 0.971 ACRES
 O.R. 499, PG. 744

JOHN A. COCHRAN AND
 JULIA E. COCHRAN
 5.00 ACRE
 O.R. 105, PG. 576

NOTE:
 * INDICATES THAT AS OF SEPTEMBER 7, 2001, IMPROVEMENTS TO THE UNITS HAVE BEGUN BUT ARE "(NOT YET COMPLETED)".

WE DO HEREBY STATE THAT THIS DRAWING OF INDIAN RIDGE CONDOMINIUM SHOWS ALL BUILDINGS AS CONSTRUCTED.

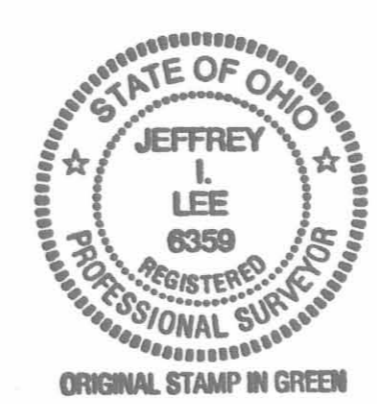


MICHAEL W. BOW
 PROFESSIONAL ENGINEER 38860
 AUGUST 17, 2001

THE M & K ENGINEERING CO.
 1691 T.R. 31 North
 BELLEFONTAINE, OHIO 43311
 (937) 592-2697

JEFFREY L. LEE
 PROFESSIONAL SURVEYOR 6359
 AUGUST 17, 2001

LEE SURVEYING & MAPPING CO., INC.
 117 North Madriver Street
 BELLEFONTAINE, OHIO 43311
 (937) 593-7335



CONDOMINIUM DRAWING FOR
 PHASE II - 2.190 ACRES
INDIAN RIDGE CONDOMINIUMS
 VIRGINIA MILITARY SURVEY 9947
 RICHLAND TOWNSHIP
 LOGAN COUNTY, OHIO

PART OF THE
 JAMES DAVID DUFF AND
 RENEE LORAINE DUFF
 ORIGINAL 54.391 ACRES
 OFFICIAL RECORD 225, PAGE 744

APPROVED BY THE L.U.C. PLANNING COMMISSION
 THIS 21 DAY OF SEPTEMBER, 2001.
Gregg A. Harris
 DIRECTOR, PLANNING COMMISSION
 PRE-APPROVAL *Jon C. Hines* 9-7-01
 PLAT CHECKED *Jon C. Hines* 9-20-01
 TRANSFERRED THIS 21st DAY OF SEPTEMBER, 2001.
Michael E. Anderson
 AUDITOR, LOGAN COUNTY, OHIO
 RECORDED IN PLAT CABINET B, SLIDE 69A & 69B
 RECEIVED FOR RECORD AT 1:10 pm 0'CLOCK p.m.
 THIS 21 DAY OF September, 2001.
Linda Hanson
 RECORDER, LOGAN COUNTY, OHIO

2 WORKING DAYS
BEFORE YOU DIG
 CALL TOLL FREE 800-362-2764
 OHIO UTILITIES PROTECTION SERVICE.