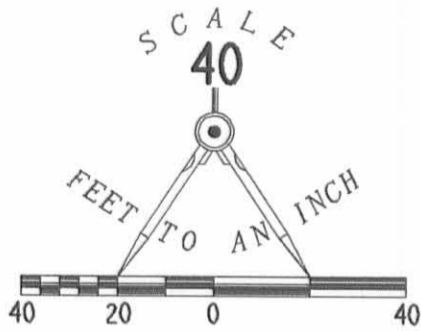
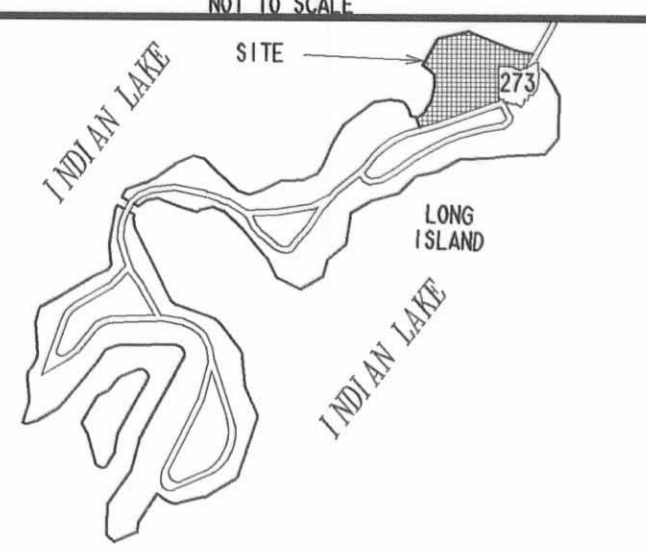
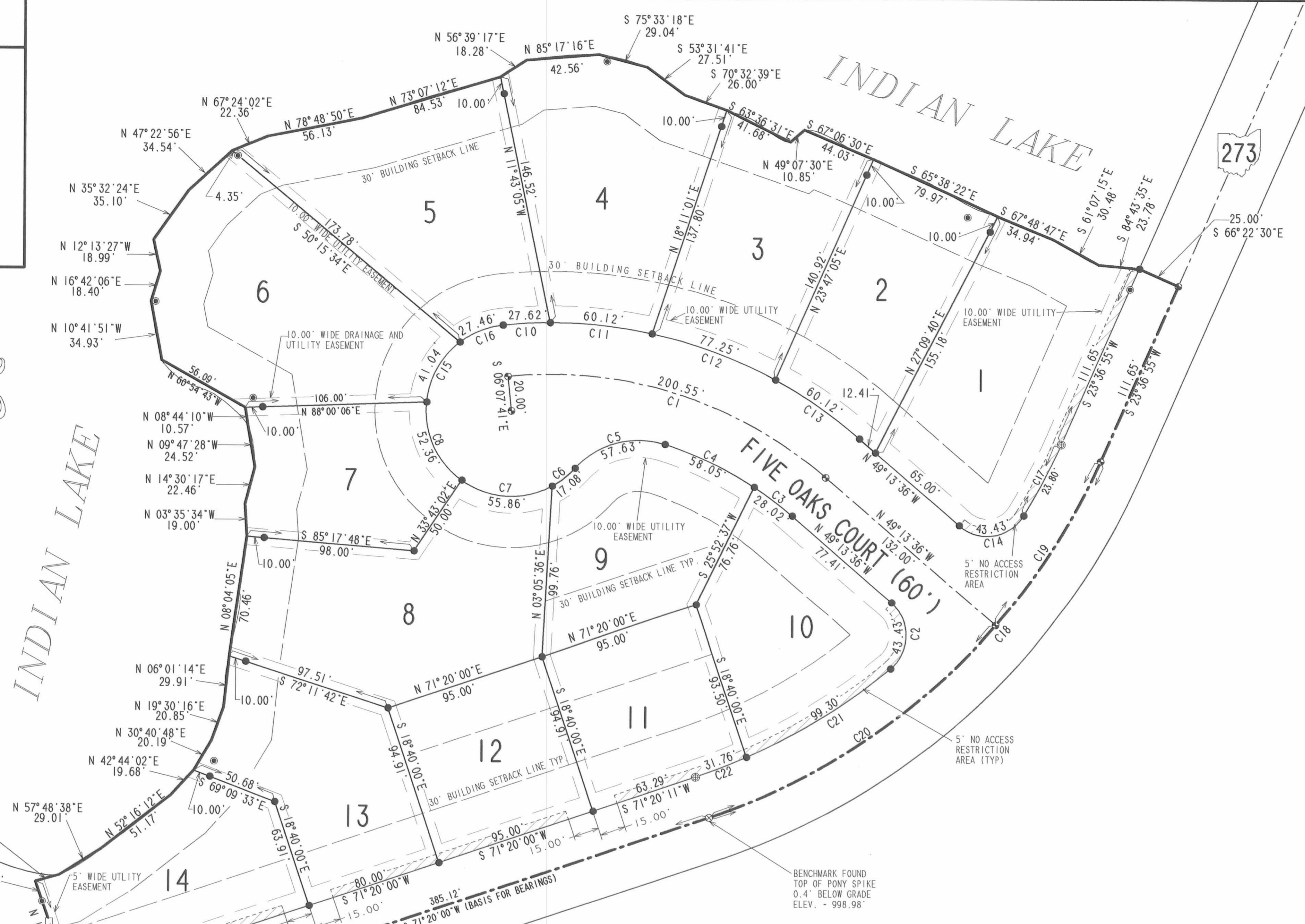


VICINITY MAP



LEGEND

- 3/4" IRON ROD SET
PONY SPIKE FOUND
CONCRETE RIGHT-OF-WAY MONUMENT FOUND
1/2" SQUARE IRON BAR FOUND
5/8 IRON ROD SET
RAILROAD SPIKE SET
MAG NAIL FOUND



EASEMENTS

- 1. EASEMENTS - NO PERMANENT STRUCTURES OR PLANTINGS SHALL BE PERMITTED IN ANY EASEMENT.
2. UTILITY EASEMENTS ARE 10 FEET WIDE CENTERED ON ALL SIDE LOT LINES...
3. DRIVEWAY ACCESS TO LOTS 1, 10, 11, 12, 13, AND 14 IS RESTRICTED AS NOTED ON THIS PLAT.

SURVEYOR'S STATEMENT

THE ACCOMPANYING PLAT REPRESENTS THE LONG ISLAND SHORES NO. 1 IN VIRGINIA MILITARY SURVEY 13393, RICHLAND TOWNSHIP, LOGAN COUNTY, OHIO. THE TRACT HAS AN AREA OF 4.992 ACRES...



JEFFREY L. LEE
PROFESSIONAL SURVEYOR 6359
SEPTEMBER 23, 1996

SUBDIVISION PLAT

LONG ISLAND SHORES NO. 1

A RESIDENTIAL COMMUNITY ON INDIAN LAKE
VIRGINIA MILITARY SURVEY 13393
RICHLAND TOWNSHIP
LOGAN COUNTY, OHIO

OWNER/DEVELOPER/PROPRIETOR

PREMIER PROPERTIES
101 W. COLUMBUS AVE.
BELLEFONTAINE, OHIO 43311

DEDICATION

KNOW ALL MEN BY THESE PRESENTS THAT PREMIER PROPERTIES, A FLORIDA GENERAL PARTNERSHIP, SAID PARTNERSHIP BEING PROPRIETOR OF THE LAND INDICATED ON THE ACCOMPANYING PLAT, HAS AUTHORIZED THE PLATTING HEREOF...

(NOTE: PREMIER PROPERTIES, A FLORIDA GENERAL PARTNERSHIP, CONSISTS OF DONALD M. HILLIKER, TRUSTEE OF THE DONALD M. HILLIKER REVOCABLE TRUST DATED 4/20/87, AND CO-TRUSTEE OF THE MARGARET H. HILLIKER REVOCABLE TRUST DATED 4/20/87, AND MARGARET H. HILLIKER, CO-TRUSTEE OF THE MARGARET H. HILLIKER REVOCABLE TRUST DATED 4/20/87, SAID TRUSTEE AND CO-TRUSTEES BEING THE SOLE PARTNERS OF PREMIER PROPERTIES.)

WITNESSES:

Max Ann Conkle
SIGNATURE

Max Ann Conkle
PRINTED NAME

Jeffrey L. Lee
SIGNATURE

JEFFREY L. LEE
PRINTED NAME

OWNERS

BY: Donald M. Hilliker, Trustee
DONALD M. HILLIKER, TRUSTEE OF THE DONALD M. HILLIKER REVOCABLE TRUST DATED 4/20/87

BY: Donald M. Hilliker, Co-Trustee
DONALD M. HILLIKER, CO-TRUSTEE OF THE MARGARET H. HILLIKER REVOCABLE TRUST DATED 4/20/87

BY: Margaret H. Hilliker, Co-Trustee
MARGARET H. HILLIKER, CO-TRUSTEE OF THE MARGARET H. HILLIKER REVOCABLE TRUST DATED 4/20/87

BEING ALL OF THE PARTNERS OF PREMIER PROPERTIES, A FLORIDA GENERAL PARTNERSHIP

ACKNOWLEDGMENT

STATE OF OHIO, COUNTY OF LOGAN, SS:

ON THIS 11th DAY OF July, 1997, BEFORE ME, A NOTARY PUBLIC IN AND FOR SAID COUNTY, CAME PREMIER PROPERTIES, A FLORIDA GENERAL PARTNERSHIP, BY DONALD M. HILLIKER, TRUSTEE OF THE DONALD M. HILLIKER REVOCABLE TRUST DATED 4/20/87, DONALD M. HILLIKER, CO-TRUSTEE OF THE MARGARET H. HILLIKER REVOCABLE TRUST DATED 4/20/87, AND MARGARET H. HILLIKER, CO-TRUSTEE OF THE MARGARET H. HILLIKER REVOCABLE TRUST DATED 4/20/87, BEING ALL OF THE PARTNERS OF SAID PARTNERSHIP, WHO ACKNOWLEDGED THAT THEY DID SIGN THE FOREGOING INSTRUMENT AND THAT THE SAME IS THEIR FREE ACT AND DEED AND THE FREE ACT AND DEED OF SAID PARTNERSHIP.

WITNESS MY OFFICIAL SIGNATURE AND SEAL ON THE DAY LAST ABOVE MENTIONED.

Max Ann Conkle
NOTARY PUBLIC

PLAT PRE-APPROVED: Suzanne M. Vostey 4-25-97

PLAT CHECKED: Jon C. Kimes 7-18-97

REVIEWED THIS 12th DAY OF July, 1997: Deborah E. Newman, CHAIRMAN, RICHLAND TOWNSHIP TRUSTEES

APPROVED THIS 10th DAY OF July, 1997: James K. Go, LOGAN COUNTY ENGINEER

APPROVED THIS 15th DAY OF July, 1997: Lasso C. Burch, INDIAN LAKE WATER POLLUTION CONTROL DISTRICT

APPROVED THIS 10th DAY OF July, 1997: Carmen L. Scott, LOGAN-LINCOLN-CHAMPAIGN REGIONAL PLANNING COMMISSION

THE WITHIN STREETS ARE HEREBY APPROVED AND ACCEPTED FOR PUBLIC MAINTENANCE

BY RESOLUTION NO. 271-97 RECORDED IN LOGAN COUNTY COMMISSIONERS' JOURNAL 6Q

APPROVED THIS 15th DAY OF July, 1997: Russell F. Smith

George W. Clayton, LOGAN COUNTY COMMISSIONERS

TRANSFERRED THIS 18th DAY OF July, 1997: Michael E. Jorden, AUDITOR, LOGAN COUNTY, OHIO

RECORDED IN PLAT CABINET B, SLIDE 208B24 RECEIVED FOR RECORD AT 10:51 O'CLOCK A.M.

THIS 18th DAY OF July, 1997

Carlson Collins, RECORDER, LOGAN COUNTY, OHIO

COPYRIGHT 1997 BY: LEE SURVEYING & MAPPING CO., INC. 117 North Madriver Street, BELLEFONTAINE, OHIO 43311 (937) 593-7335

D287 LONGWST1 L-2447-1