

2 WORKING DAYS
BEFORE YOU DIG 216
CALL TOLL FREE 800-362-2764



THE M & K ENGINEERING CO., INC.
322 East Main Street
RUSSELLS POINT, OHIO 43348
(937) 842-2698

LEE SURVEYING & MAPPING CO., INC.
117 North Madison Street
BELLEFONTAINE, OHIO 43311
(937) 593-7335



APPROVED BY THE L.U.C. PLANNING COMMISSION
THIS DAY OF September, 1992.

DIRECTOR PLANNING COMMISSION
Jan E. Hines 9-1-92

PRE-APPROVAL
PLAT CHECKED
TRANSFERRED THIS DAY OF September, 1992.

AUDITOR, LOGAN COUNTY, OHIO
Robert E. Baker

RECORDED IN PLAT CABINET B, SLIDE 424-428, 43A
RECEIVED FOR RECORD AT 10:39:00 O'CLOCK A.M.

THIS DAY OF September, 1992.
RECORDER, LOGAN COUNTY, OHIO
Robert E. Baker

9908625
Plat Cab B Side 42A

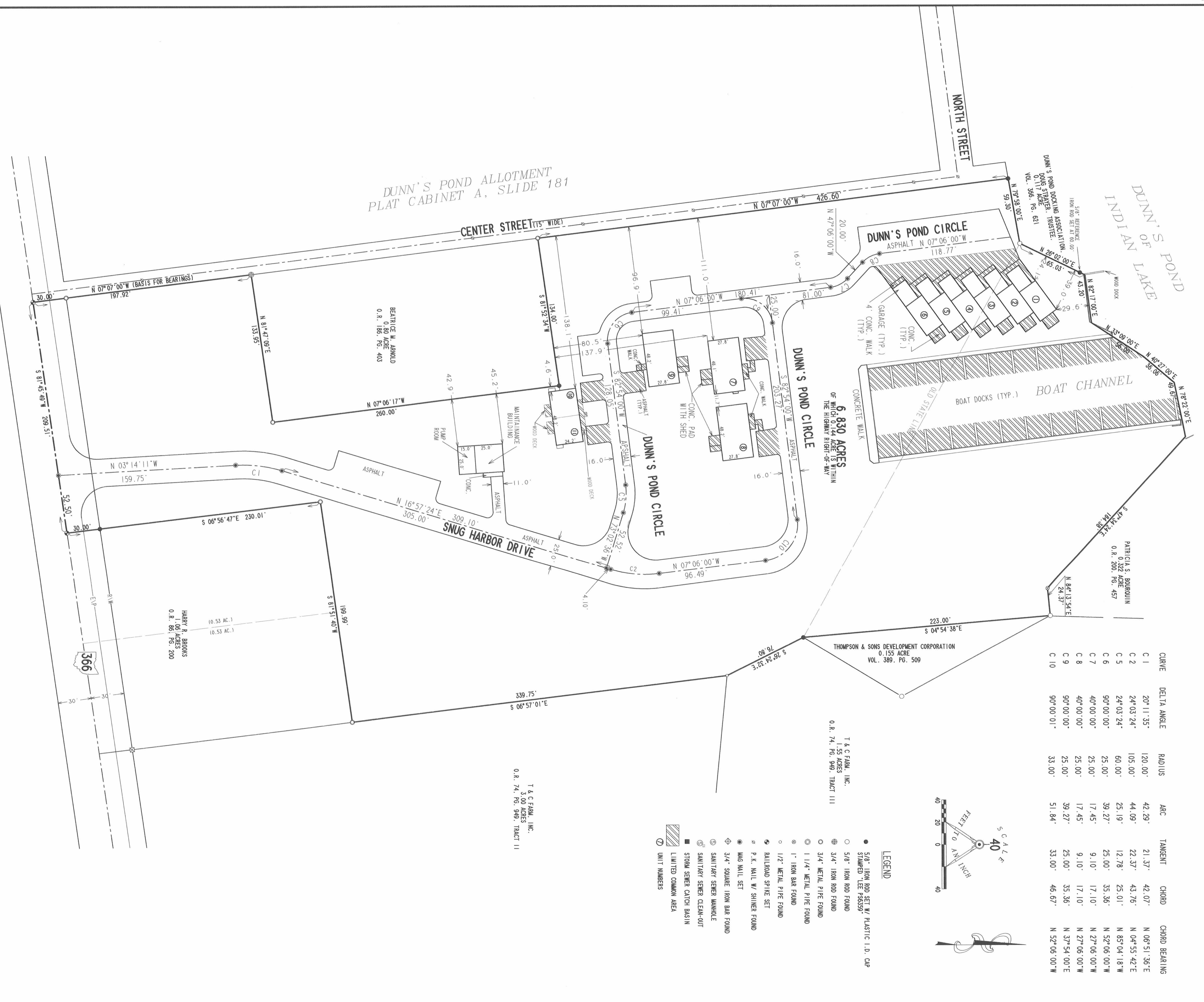
SNUG HARBOR CONDOMINIUM AT DUNN'S POND

6.830 ACRES
VIRGINIA MILITARY SURVEY 9925-9946-10121
WASHINGTON TOWNSHIP
LOGAN COUNTY, OHIO

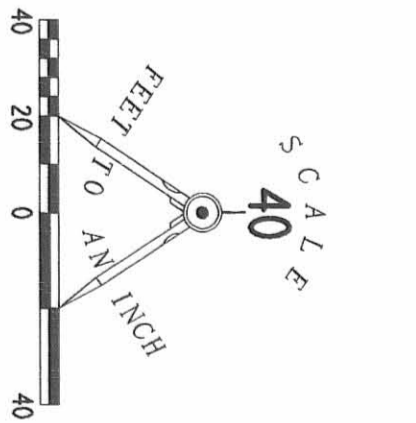
ALL OF THE
DUNN'S POND ASSOCIATES, LTD.
OFFICIAL RECORD 272, PAGE 238

WE DO HEREBY STATE THAT THIS DRAWING OF SNUG HARBOR CONDOMINIUMS
SHOWS ALL BUILDINGS AS CONSTRUCTED.

DUNN'S POND ALLOTMENT
PLAT CABINET A, SLIDE 181



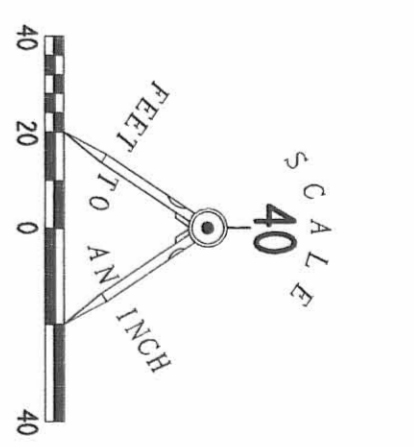
CURVE	DELTA ANGLE	RADIUS	ARC	TANGENT	CHORD	CHORD BEARINGS
C 1	20° 11' 35"	120.00'	42.29'	21.37'	42.07'	N 06° 51' 36" E
C 2	24° 03' 24"	105.00'	44.09'	22.37'	43.76'	N 04° 55' 42" E
C 5	24° 03' 24"	60.00'	25.19'	12.78'	25.01'	N 85° 04' 18" W
C 6	90° 00' 00"	25.00'	39.27'	25.00'	35.36'	N 52° 06' 00" W
C 7	40° 00' 00"	25.00'	17.45'	9.10'	17.10'	N 27° 06' 00" W
C 8	40° 00' 00"	25.00'	17.45'	9.10'	17.10'	N 27° 06' 00" W
C 9	90° 00' 00"	25.00'	39.27'	25.00'	35.36'	N 37° 54' 00" E
C 10	90° 00' 01"	33.00'	51.84'	33.00'	46.67'	N 52° 06' 00" W



- LEGEND**
- 5/8" IRON ROD SET W/ PLASTIC I.D. CAP
 - STAMPED LEE 38859
 - 5/8" IRON ROD FOUND
 - 3/4" IRON ROD FOUND
 - 3/4" METAL PIPE FOUND
 - 1 1/4" METAL PIPE FOUND
 - 1" IRON BAR FOUND
 - 1/2" METAL PIPE FOUND
 - BALLROAD SPIKE SET
 - P.K. MAIL W/ SHIRER FOUND
 - MAG MAIL SET
 - 3/4" SQUARE IRON BAR FOUND
 - SANITARY SENER MANHOLE
 - SANITARY SENER CLEAN-OUT
 - STORM SENER CATCH BASIN
 - ▨ LIMITED COMMON AREA
 - ⑦ UNIT NUMBERS



CURVE	DELTA ANGLE	RADIUS	ARC	TANGENT	CHORD	CHORD BEARING
C 1	20° 11' 35"	120.00'	42.29'	21.37'	42.07'	N 06° 51' 36" E
C 2	24° 03' 24"	105.00'	44.09'	22.37'	43.76'	N 04° 55' 42" E
C 5	24° 03' 24"	60.00'	25.19'	12.78'	25.01'	N 85° 04' 18" W
C 6	90° 00' 00"	25.00'	39.27'	25.00'	35.36'	N 52° 05' 00" W
C 7	40° 00' 00"	25.00'	17.45'	9.10'	17.10'	N 27° 05' 00" W
C 8	40° 00' 00"	25.00'	17.45'	9.10'	17.10'	N 27° 05' 00" W
C 9	90° 00' 00"	25.00'	39.27'	25.00'	35.36'	N 37° 54' 00" E
C 10	90° 00' 01"	33.00'	51.84'	33.00'	46.67'	N 52° 05' 00" W



LEGEND

- 5/8" IRON ROD SET W/ PLASTIC I.D. CAP
- STAMPED LEE P38399
- 5/8" IRON ROD FOUND
- 3/4" METAL PIPE FOUND
- 1" IRON BAR FOUND
- 1 1/4" METAL PIPE FOUND
- 1/2" METAL PIPE FOUND
- RAILROAD SPIKE SET
- P.K. NAIL W/ SHINER FOUND
- MAG NAIL SET
- ⊕ 3/4" SQUARE IRON BAR FOUND
- ⊕ SANITARY SEWER MANHOLE
- ⊕ SANITARY SEWER CLEAN-OUT
- ⊕ LIMITED COMMON AREA
- ① UNIT NUMBERS

EASEMENTS DRAWING
SNUG HARBOR CONDOMINIUM
 AT DUNN'S POND

6.830 ACRES
 VIRGINIA MILITARY SURVEY 9925-9946-10121
 VILLAGE OF RUSSELL'S POINT
 WASHINGTON TOWNSHIP
 LOGAN COUNTY, OHIO
 ALL OF THE
 DUNN'S POND ASSOCIATES, LTD.
 ORIGINAL 6.830 ACRES
 OFFICIAL RECORD 272, PAGE 238

DUNN'S POND ALLOTMENT
 PLAT CABINET A, SLIDE 181

DUNN'S POND
 OF LAKE
 INDIAN

DUNN'S POND BOATING ASSOCIATION
 DUNN'S POND BOATING DOCK #7 LOT
 VOL. 366, PG. 021

PATRICIA S. BORROUN
 0.22 ACRES
 O.R. 200, PG. 457

THOMPSON & SONS DEVELOPMENT CORPORATION
 155 ACRES
 VOL. 389, PG. 509

T & C FARM, INC.
 1.55 ACRES
 O.R. 74, PG. 949, TRACT 111

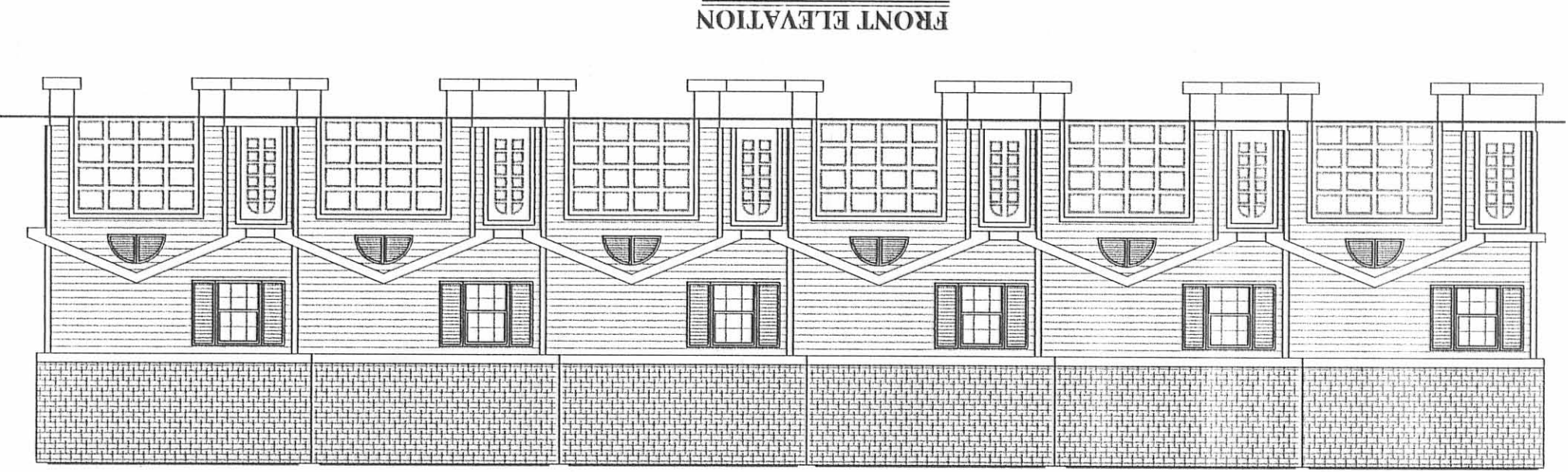
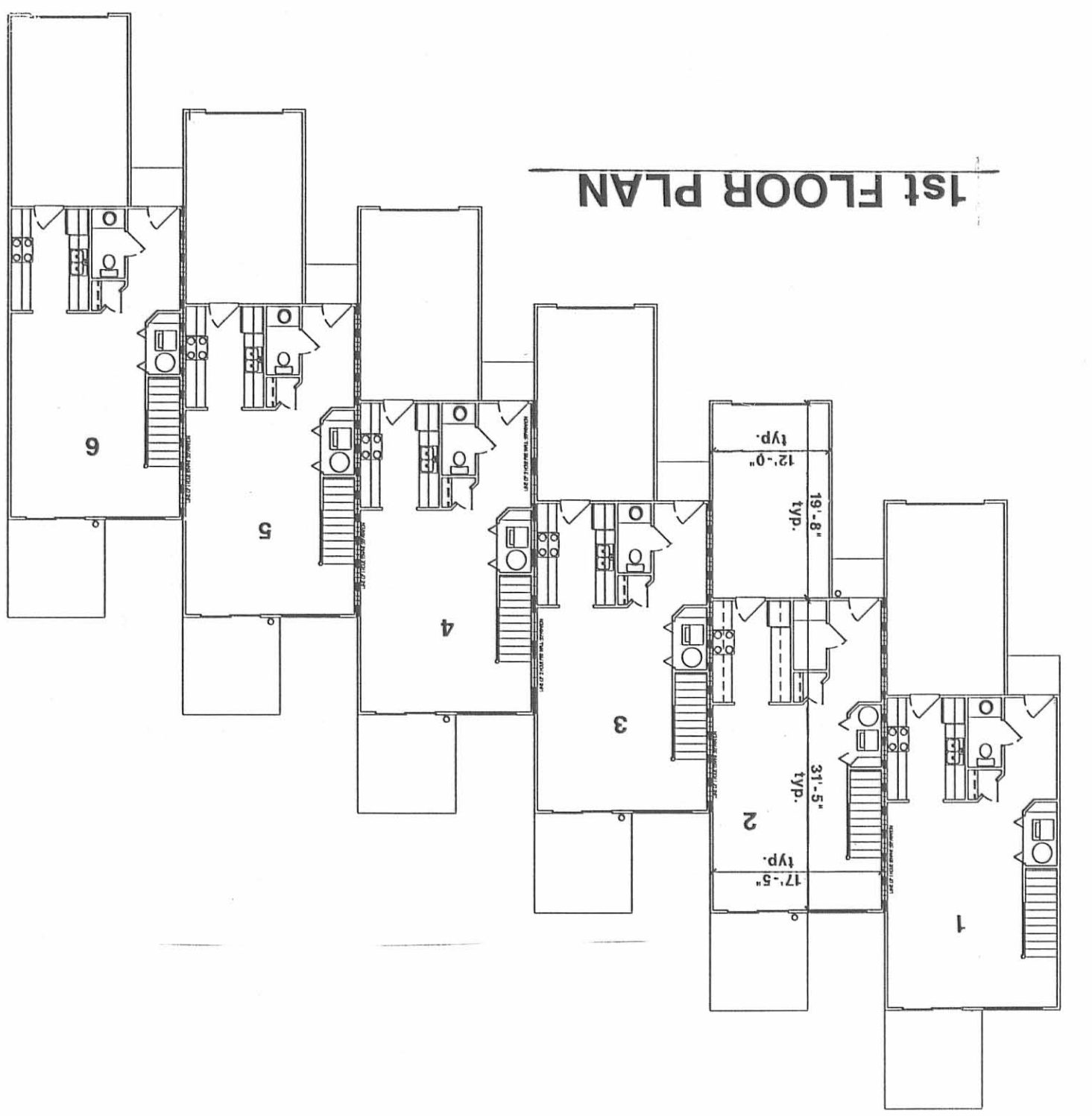
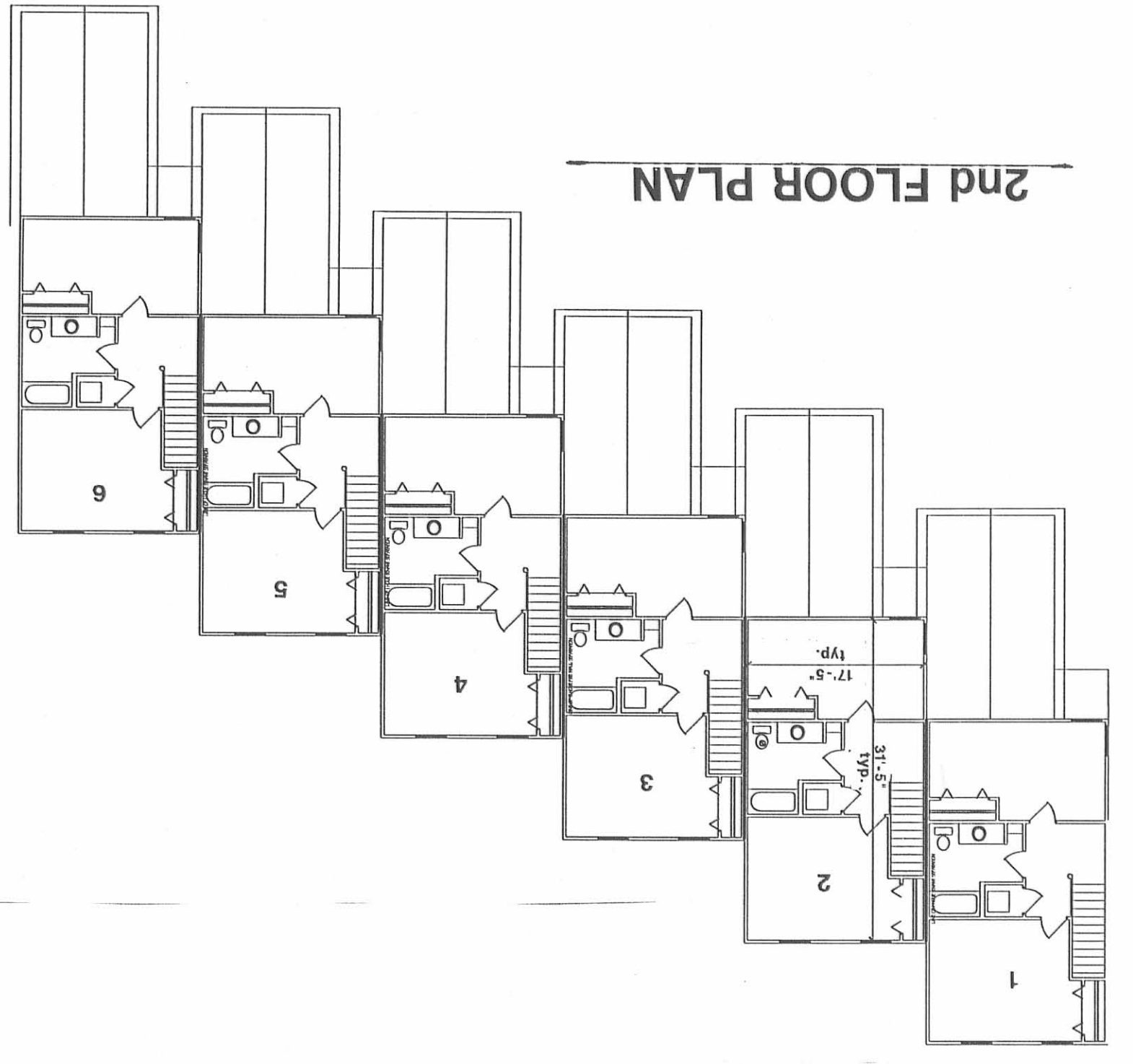
T & C FARM, INC.
 3.00 ACRES
 O.R. 74, PG. 949, TRACT 11

HARRY R. BROOKS
 1.06 ACRES
 O.R. 86, PG. 200

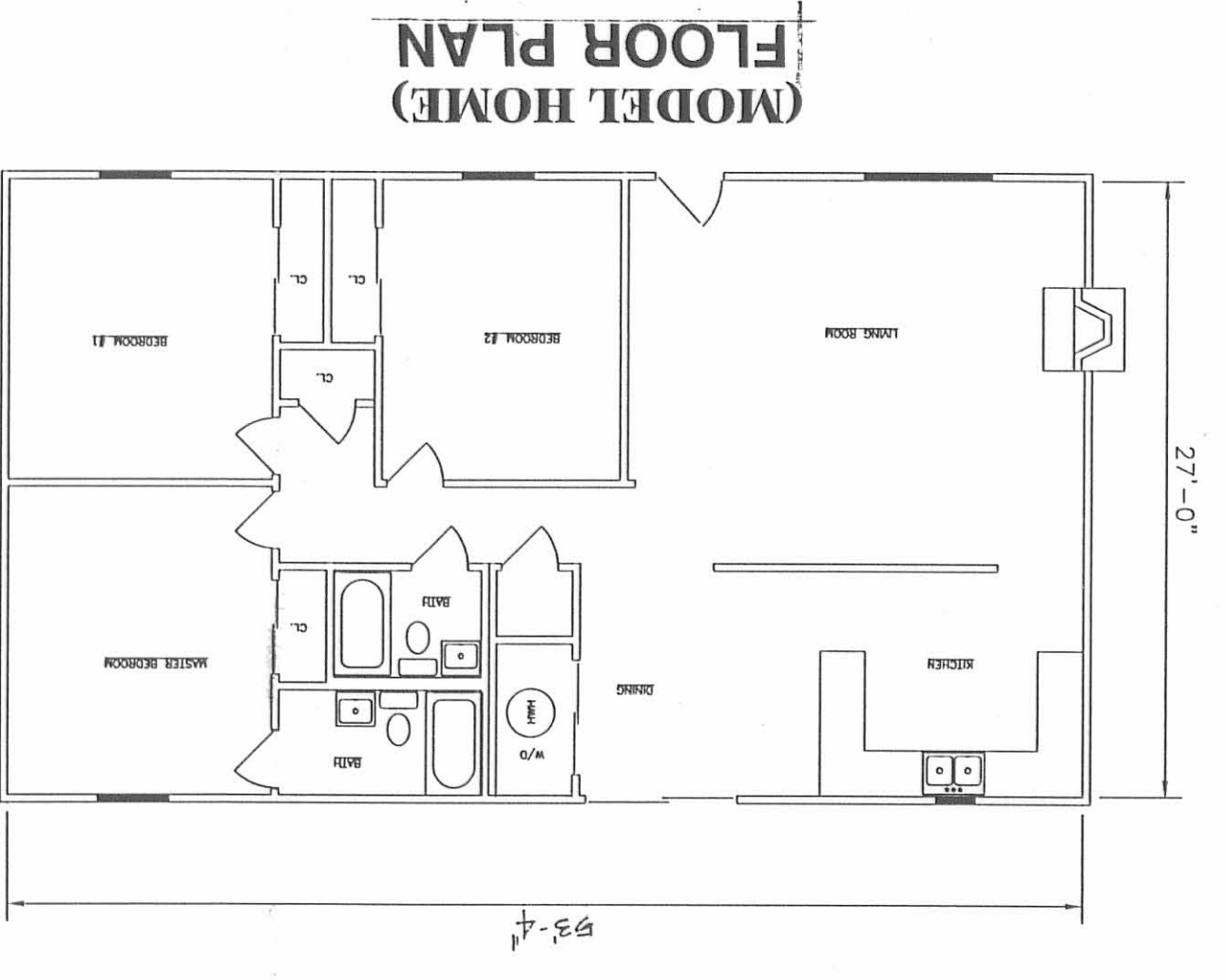
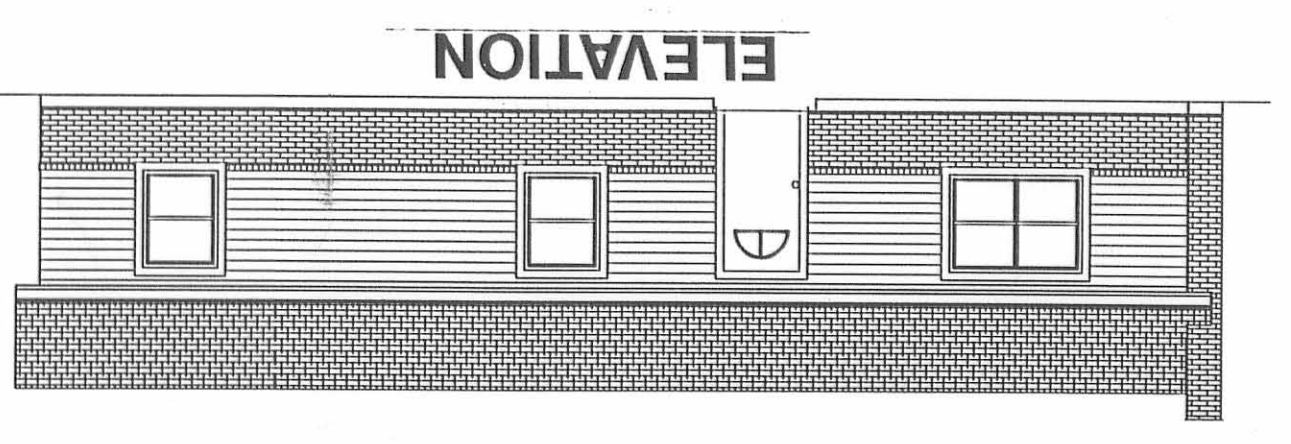
BEATRICE M. RENOULD
 0.186 ACRES
 PG. 403

Plat Cab B Slide 42B

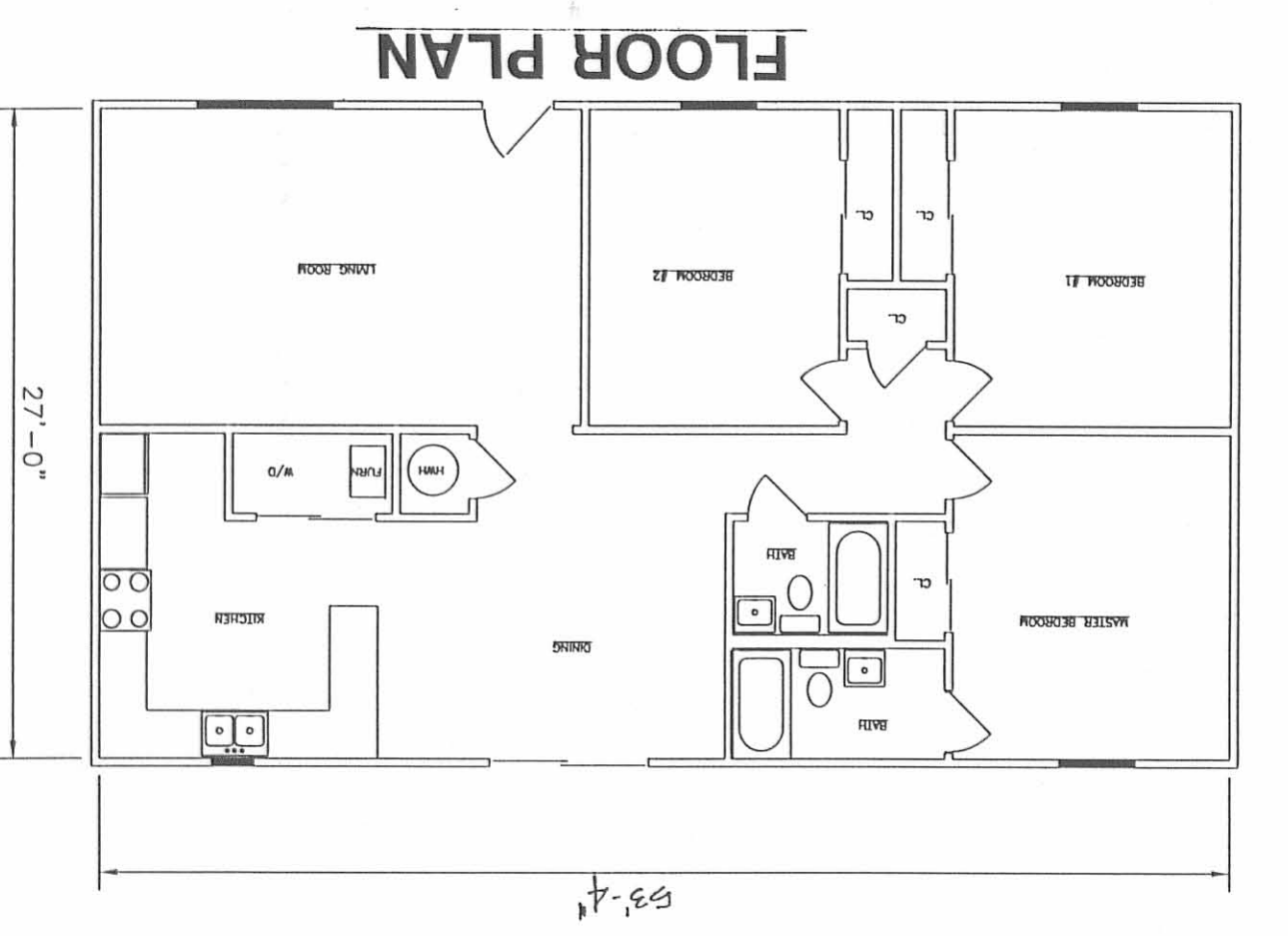
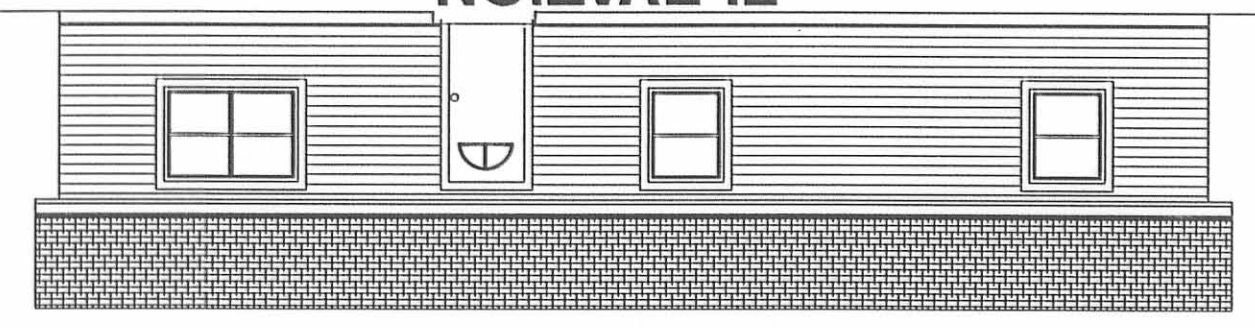
UNITS # 1 - # 6



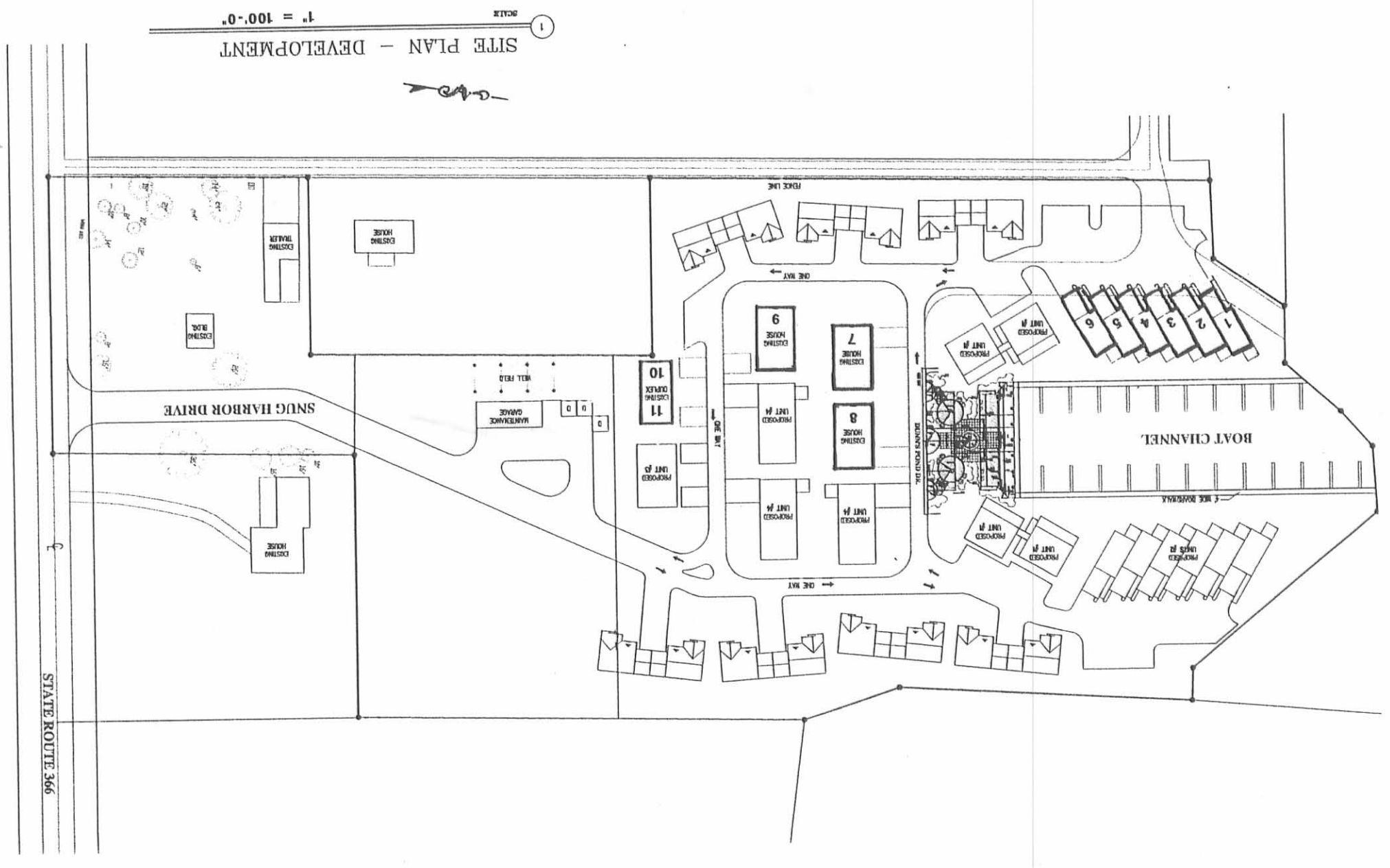
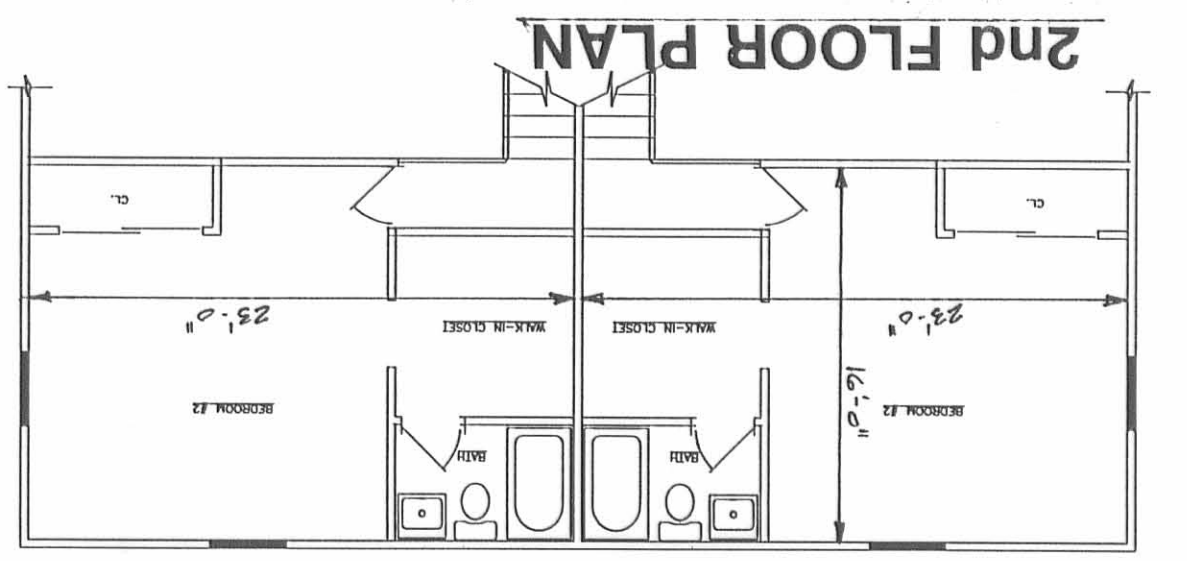
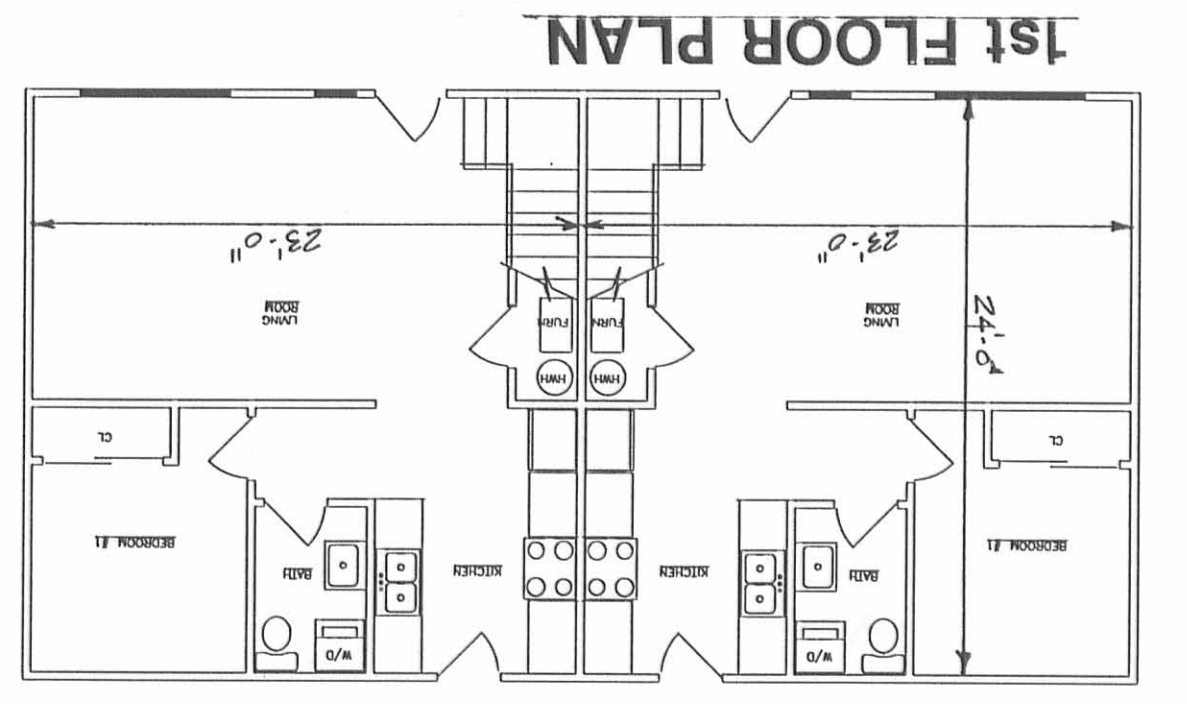
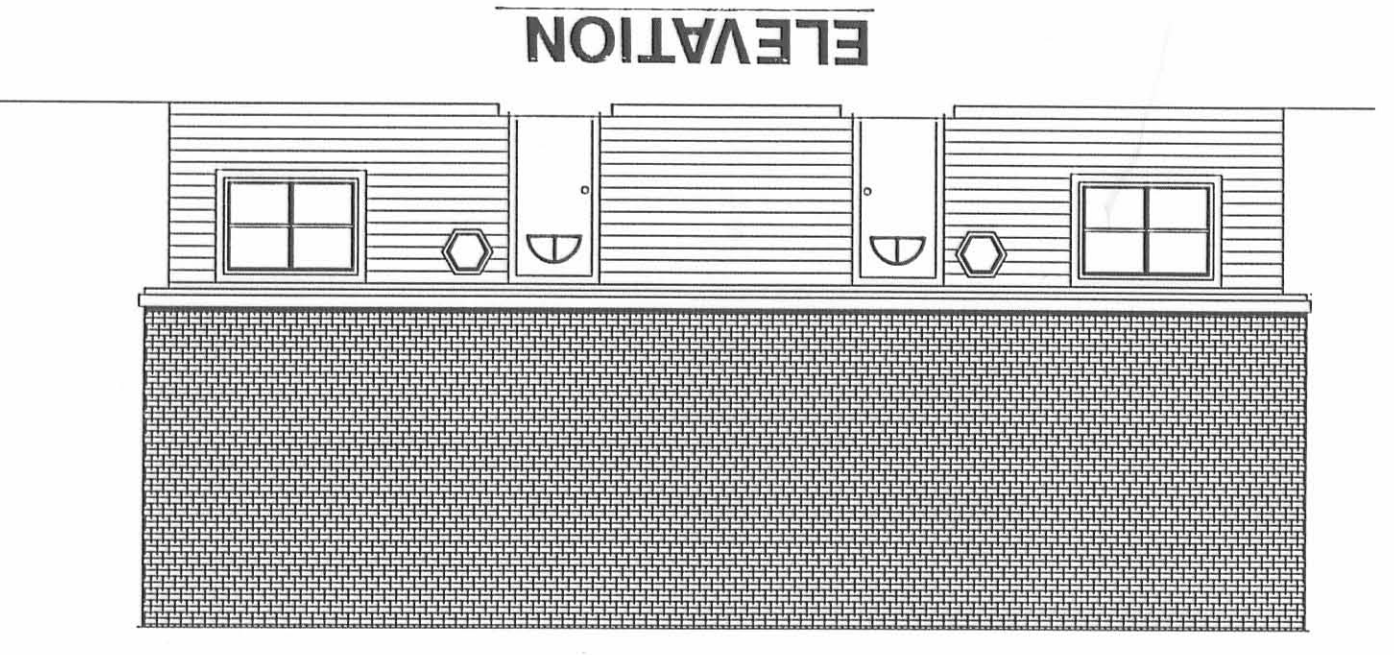
UNIT # 7



UNITS # 8 & # 9



UNITS # 10 & # 11



OF	3
SHEETS	3
DRAWN	
CHECKED	
DATE	
SCALE	
N.T.S.	
JOB NO.	
SHEET	

SNUG HARBOR CONDOMINIUMS
AT DUNN'S POND
LOGAN COUNTY
RUSSELL'S POINT, OHIO 43348

REVISIONS	BY