

5299A

5299A

2 WORKING DAYS
BEFORE YOU DIG
800-362-2764



MICHAEL W. BOW
PROFESSIONAL ENGINEER 38880
NOVEMBER 19, 1999
THE M & K ENGINEERING CO.
RUSSELLS POINT, OHIO 43348
(937) 942-2698

JEFFREY I. LEE
PROFESSIONAL SURVEYOR 6359
NOVEMBER 19, 1999
LEE SURVEYING & MAPPING CO., INC.
BELLEFONTAINE, OHIO 43311
(937) 593-7335



SNUG HARBOR CONDOMINIUM

AT DUNN'S POND AMENDMENT NUMBER 1

6.830 ACRES
VIRGINIA MILITARY SURVEY 9925-9946-10121
PLAT CABINET B, SLIDES 42A & B AND 43A
WASHINGTON TOWNSHIP
LOGAN COUNTY, OHIO

ALL OF THE

DUNN'S POND ASSOCIATES, LTD.

WE DO HEREBY STATE THAT THIS DRAWING OF SNUG HARBOR CONDOMINIUMS
SHOWS ALL BUILDINGS AS CONSTRUCTED.

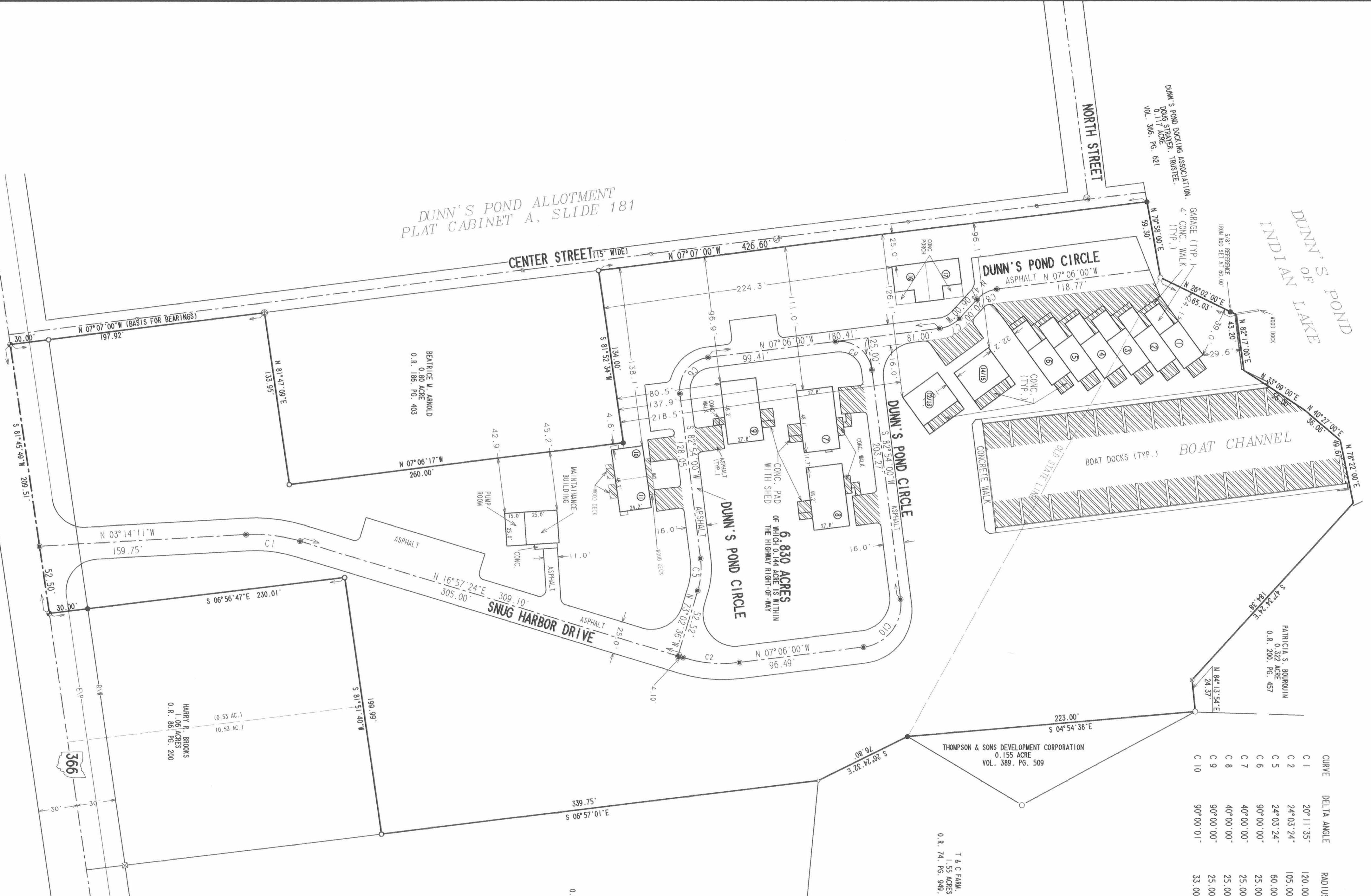
OFFICIAL RECORD 272, PAGE 238

ORIGINAL 6.830 ACRES

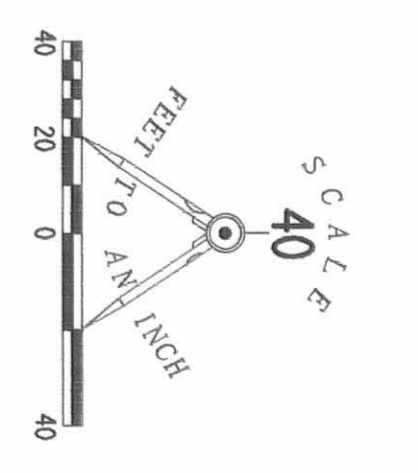
APPROVED BY THE L.U.C. PLANNING COMMISSION
THIS 28 DAY OF February 1999
Gregg A. Ottum
DIRECTOR, PLANNING COMMISSION
PRE-APPROVAL *Jan C. Hines* 3-21-00
PLAT CHECKED *Jan C. Hines* 3-21-00
TRANSFERRED THIS 22nd DAY OF March 1999
Michael W. Bow
AUDITOR, LOGAN COUNTY, OHIO
RECORDED IN PLAT CABINET B, SLIDE 49B, 50A & 50B
RECEIVED FOR RECORD AT 9:28 0'CLOCK A.M.
THIS 22nd DAY OF March 1999
Carolyn J. Collins
RECORDER, LOGAN COUNTY, OHIO

20022373

801521, NOVEMBER 19, 1999
D 299 TRUSS (TRUSSING PLAT)
L-708-1



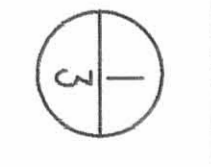
CURVE	DELTA ANGLE	RADIUS	ARC	TANGENT	CHORD	CHORD BEARING
C 1	20° 11' 35"	120.00'	42.29'	21.37'	42.07'	N 06° 51' 36" E
C 2	24° 03' 24"	105.00'	44.09'	22.37'	43.76'	N 04° 55' 42" E
C 5	24° 03' 24"	60.00'	25.19'	12.78'	25.01'	N 55° 04' 18" W
C 6	90° 00' 00"	25.00'	39.27'	25.00'	35.36'	N 52° 06' 00" W
C 7	40° 00' 00"	25.00'	17.45'	9.10'	17.10'	N 27° 06' 00" W
C 8	40° 00' 00"	25.00'	17.45'	9.10'	17.10'	N 27° 06' 00" W
C 9	90° 00' 00"	25.00'	39.27'	25.00'	35.36'	N 52° 06' 00" E
C 10	90° 00' 01"	33.00'	51.84'	33.00'	46.67'	N 52° 06' 00" W



LEGEND

- 5/8" IRON ROD SET W/ PLASTIC I.D. CAP
- STAMPED "LEE 38880"
- 5/8" IRON ROD FOUND
- 3/4" IRON ROD FOUND
- 3/4" METAL PIPE FOUND
- 1 1/4" METAL PIPE FOUND
- 1" IRON BAR FOUND
- 1/2" METAL PIPE FOUND
- BALLROAD SPIKE SET
- P.K. WALL W/ SHINER FOUND
- MAG WALL SET
- 3/4" SQUARE IRON BAR FOUND
- SANITARY SEWER MANHOLE
- SANITARY SEWER CLEAN-OUT
- STORM SEWER CATCH BASIN
- ▨ LIMITED COMMON AREA
- ⑦ UNIT NUMBERS

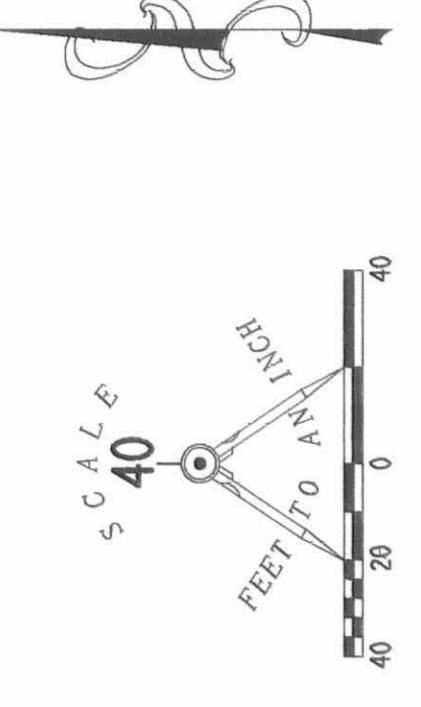
Plat Cab B Slide 49B



Plot Cab B Slide 50A

2
3

CURVE	DELTA ANGLE	RADIUS	ARC	TANGENT	CHORD	CHORD BEARING
C 1	20° 11' 35"	120.00'	42.29'	21.37'	42.07'	N 06° 51' 36" E
C 2	24° 03' 24"	105.00'	44.09'	22.37'	43.76'	N 04° 55' 42" E
C 5	24° 03' 24"	60.00'	25.19'	12.78'	25.01'	N 85° 04' 18" W
C 6	90° 00' 00"	25.00'	39.27'	25.00'	35.36'	N 52° 06' 00" W
C 7	40° 00' 00"	25.00'	17.45'	9.10'	17.10'	N 27° 06' 00" W
C 8	40° 00' 00"	25.00'	17.45'	9.10'	17.10'	N 27° 06' 00" W
C 9	90° 00' 00"	25.00'	39.27'	25.00'	35.36'	N 37° 54' 00" E
C 10	90° 00' 01"	33.00'	51.84'	33.00'	46.67'	N 52° 06' 00" W



LEGEND

- 5/8" IRON ROD SET W/ PLASTIC I.D. CAP
- STAMPED "LEE P56359"
- 5/8" IRON ROD FOUND
- ⊗ 3/4" IRON ROD FOUND
- ⊙ 3/4" METAL PIPE FOUND
- ⊙ 1 1/4" METAL PIPE FOUND
- 1" IRON BAR FOUND
- 1/2" METAL PIPE FOUND
- ⊕ RAILROAD SPIKE SET
- ⊕ P.K. NAIL W/ SHINER FOUND
- ⊕ MAG NAIL SET
- ⊕ 3/4" SQUARE IRON BAR FOUND
- ⊕ SANITARY SEWER MANHOLE
- ⊕ SANITARY SEWER CLEAN-OUT
- ⊕ LIMITED COMMON AREA
- ⑦ UNIT NUMBERS



EASEMENTS DRAWING
SNUG HARBOR CONDOMINIUM
 AT DUNN'S POND
 AMENDMENT NUMBER 1

6.830 ACRES
 VIRGINIA MILITARY SURVEY 9925-9946-10121
 PLAT CABINET B, SLIDES 42A & B AND 43A
 WASHINGTON TOWNSHIP
 LOGAN COUNTY, OHIO

ALL OF THE
 DUNN'S POND ASSOCIATES, L.T.D.
 ORIGINAL 6.830 ACRES
 OFFICIAL RECORD 272, PAGE 238

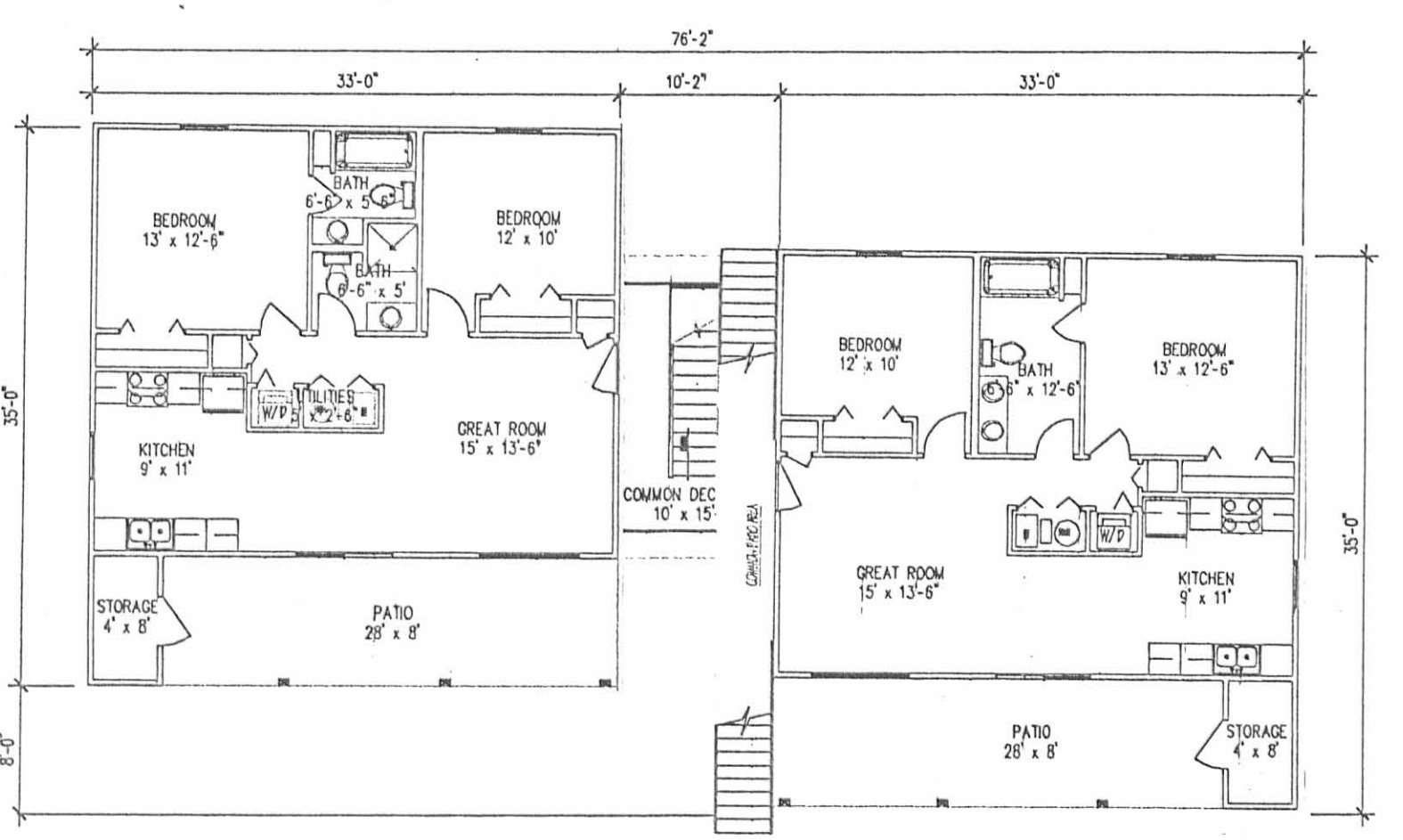
J-299A

J-299A

Plot Cab B Slide 50B

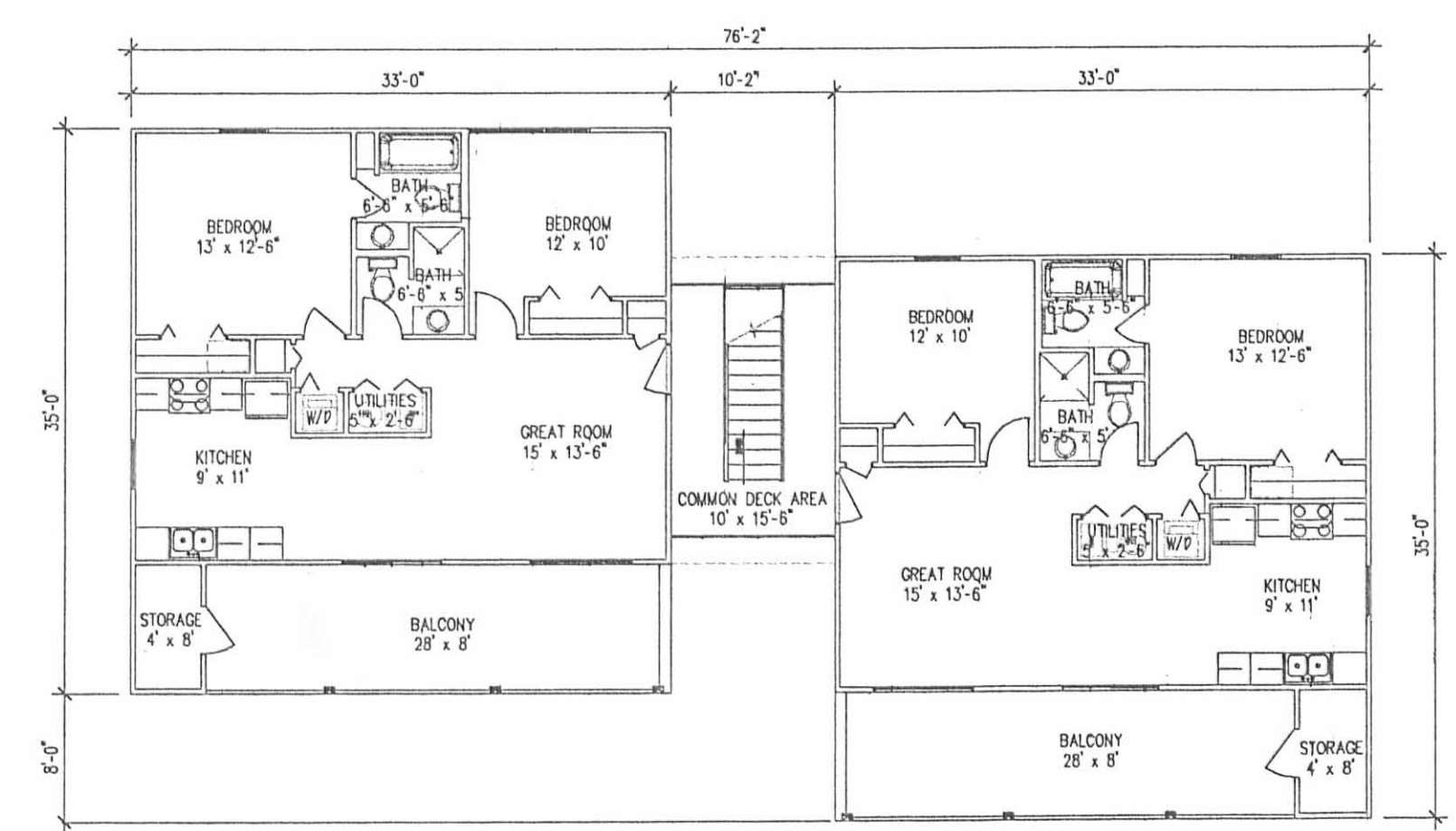


13-13 QUAD ELEVATION (LAKESIDE)



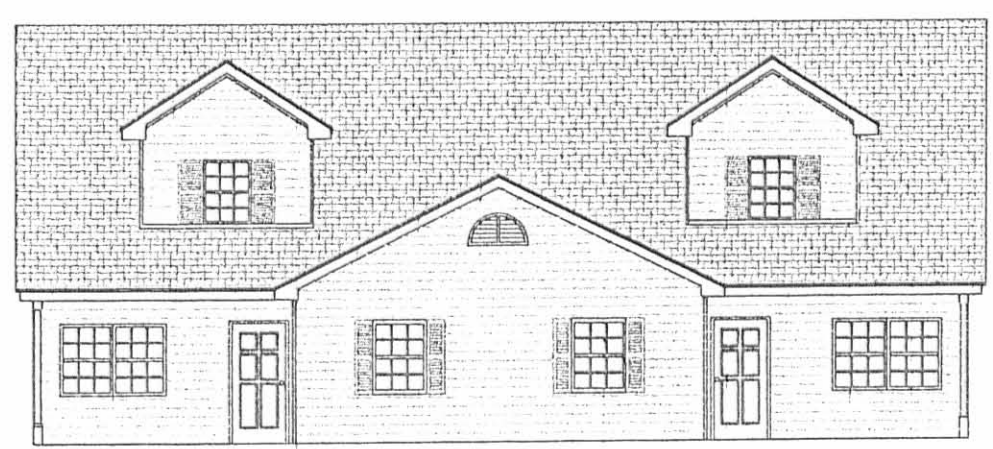
11 QUAD FIRST FLOOR PLAN (left)

14 QUAD FIRST FLOOR PLAN (right)

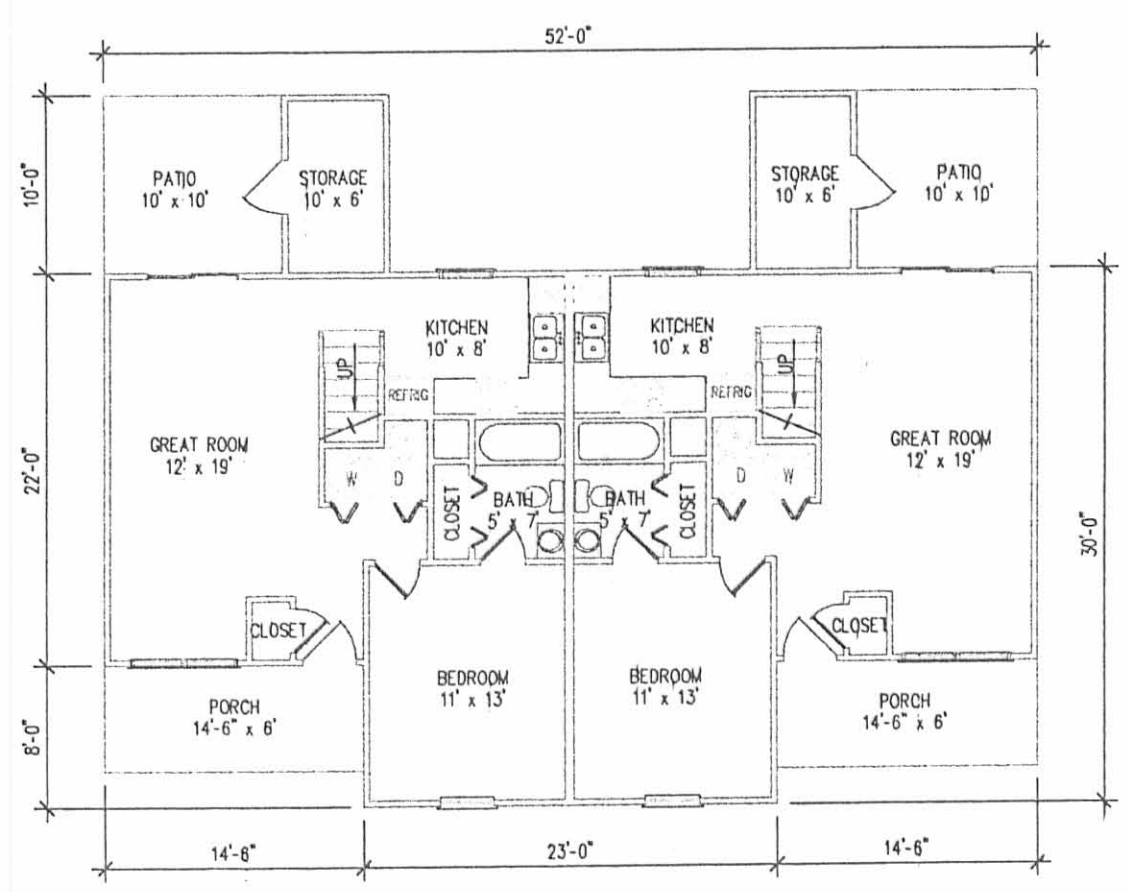


12 QUAD SECOND FLOOR PLAN (left)

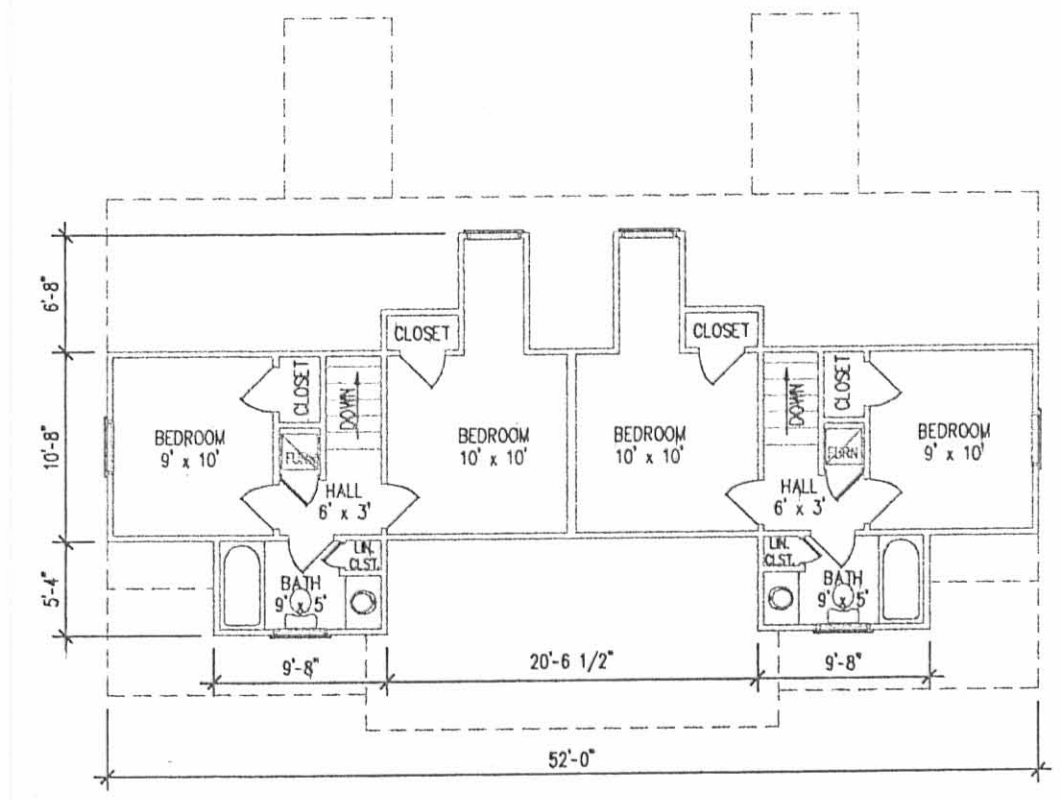
14 QUAD SECOND FLOOR PLAN (right)



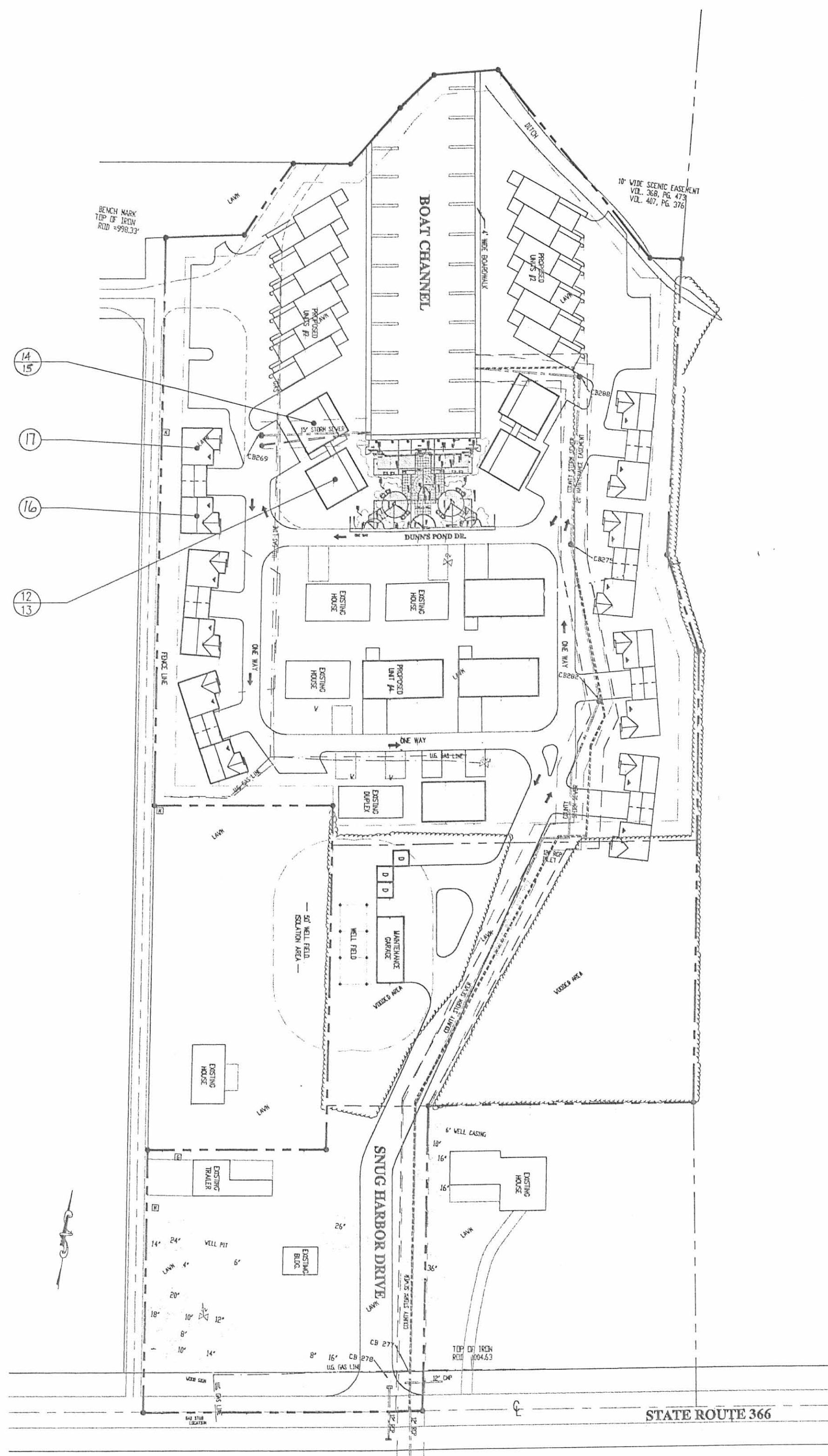
14-17 DUPLEX ELEVATION



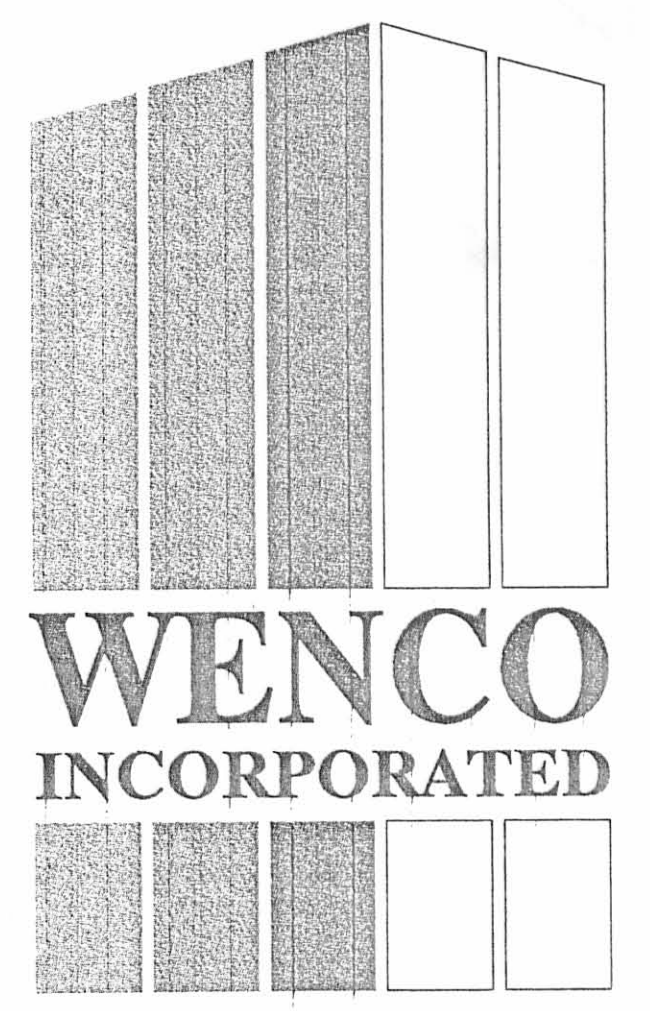
14-17 DUPLEX FIRST FLOOR PLAN



14-17 DUPLEX SECOND FLOOR PLAN



SITE PLAN



WENCO INCORPORATED

1807 DALTON DRIVE
NEW CARLISLE, OHIO
(937) 849-6002

SNUG HARBOR CONDOMINIUMS
AT DUNN'S POND
LOGAN COUNTY
RUSSELL'S POINT, OHIO 43348

ISSUED FOR	DATE	BY

THIS DRAWING AND ALL INFORMATION CONTAINED HEREIN IS THE EXCLUSIVE PROPERTY OF WENCO INCORPORATED AND IS NOT TO BE COPIED OR USED IN ANY WAY WITHOUT THE EXPRESS WRITTEN CONSENT OF WENCO INCORPORATED. AND MUST BE RETURNED UPON REQUEST. THIS DRAWING IS NOT FOR GENERAL USE OR PUBLICATION, ALL RIGHTS RESERVED. © COPYRIGHT 1997.

9-21-99 10:53:02 am EST
SNG-CHKP.owg

DRAWN BY:	CHECKED BY:
JOB NO:	
SHEET NO:	

PHASE 2