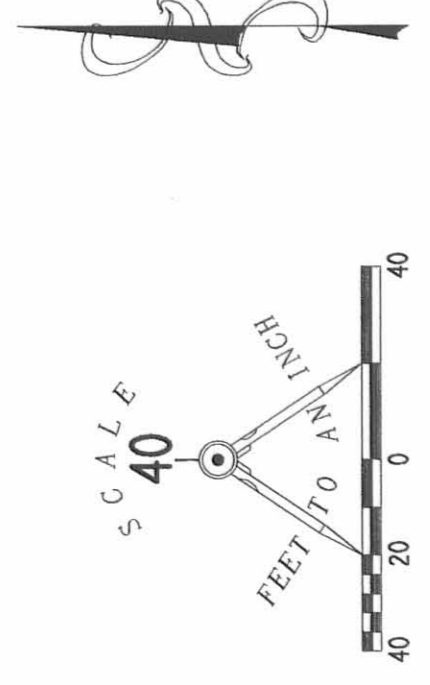




CURVE	DELTA ANGLE	RADIUS	ARC	TANGENT	CHORD	CHORD BEARING
C 1	20° 11' 35"	120.00'	42.29'	21.37'	42.07'	N 06° 51' 36" E
C 2	24° 03' 24"	105.00'	44.09'	22.37'	43.76'	N 04° 55' 42" E
C 5	24° 03' 24"	60.00'	25.19'	12.76'	25.01'	N 85° 04' 18" W
C 6	90° 00' 00"	25.00'	39.27'	25.00'	35.36'	N 52° 06' 00" W
C 7	40° 00' 00"	25.00'	17.45'	9.10'	17.10'	N 27° 06' 00" W
C 8	40° 00' 00"	25.00'	17.45'	9.10'	17.10'	N 27° 06' 00" W
C 9	90° 00' 00"	25.00'	39.27'	25.00'	35.36'	N 37° 54' 00" E
C 10	90° 00' 01"	33.00'	51.84'	33.00'	46.67'	N 52° 06' 00" W

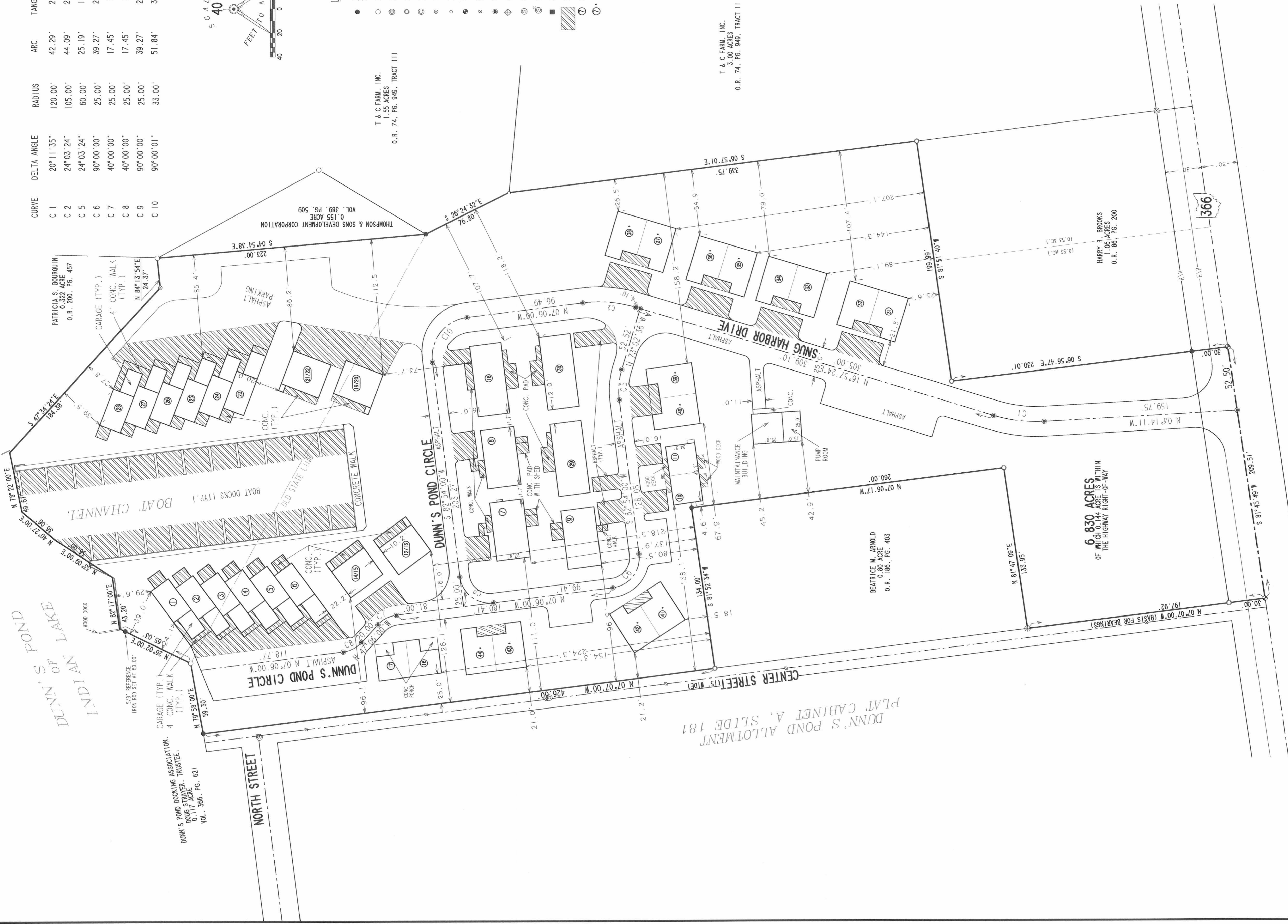


LEGEND

- 5/8" IRON ROD SET W/ PLASTIC I.D. CAP STAMPED "LEE P56559"
- 5/8" IRON ROD FOUND
- ⊗ 3/4" IRON ROD FOUND
- ⊙ 3/4" METAL PIPE FOUND
- ⊚ 1 1/4" METAL PIPE FOUND
- ⊛ 1" IRON BAR FOUND
- ⊜ 1/2" METAL PIPE FOUND
- ⊝ RAILROAD SPIKE SET
- ⊞ P. X. NAIL W/ SHINER FOUND
- ⊟ MAG NAIL SET
- ⊠ 3/4" SQUARE IRON BAR FOUND
- ⊡ SANITARY SEWER MANHOLE
- ⊢ SANITARY SEWER CLEAN-OUT
- ⊣ STORM SEWER CATCH BASIN
- ▨ LIMITED COMMON AREA
- ① UNIT NUMBERS
- ⊙ INDICATES BUILDING THAT ARE NOT YET COMPLETE

T & C FARM, INC.  
1.55 ACRES, TRACT III  
O.R. 74, PG. 949, TRACT III

T & C FARM, INC.  
3.00 ACRES, TRACT II  
O.R. 74, PG. 949, TRACT II



DUNN'S POND  
INDIAN LAKE

DUNN'S POND DOCKING ASSOCIATION  
DANIEL STAYNER, TRUSTEE.  
VOL. 366, PG. 621

NORTH STREET

DUNN'S POND CIRCLE

DUNN'S POND ALLOTMENT 181  
PLAT CABINET A, SLIDE 12B

SNUG HARBOR DRIVE

6.830 ACRES  
OF WHICH 0.44 ACRES IS WITHIN  
THE HIGHWAY RIGHT-OF-WAY

**SNUG HARBOR CONDOMINIUM  
AT DUNN'S POND  
AMENDMENT NUMBER 3**

6.830 ACRES  
VIRGINIA MILITARY SURVEY 9925-9946-10121  
PLAT CABINET B, SLIDES 498 -508  
WASHINGTON TOWNSHIP  
LOGAN COUNTY, OHIO

ALL OF THE  
DUNN'S POND ASSOCIATES, LTD.  
ORIGINAL 6.830 ACRES  
OFFICIAL RECORD 272, PAGE 238

WE DO HEREBY STATE THAT THIS DRAWING OF SNUG HARBOR CONDOMINIUMS  
SHOWS ALL BUILDINGS AS CONSTRUCTED.



Michael W. Bow  
MICHAEL W. BOW  
PROFESSIONAL ENGINEER 38860  
JANUARY 7, 2002  
THE M & K ENGINEERING CO.  
322 East Main Street  
RUSSELLS POINT, OHIO 43348  
(937) 842-2698

Jeffrey L. Lee  
JEFFREY L. LEE  
PROFESSIONAL SURVEYOR 6359  
JANUARY 7, 2002  
LEE SURVEYING & MAPPING CO., INC.  
117 North Madriver Street  
BELLEFONTAINE, OHIO 43311  
(937) 593-7335



APPROVED BY THE L.U.C. PLANNING COMMISSION  
THIS 21 DAY OF February, 2002.

Gregory J. Harris  
DIRECTOR, PLANNING COMMISSION  
PRE-APPROVAL Jan. 6, 2002  
PLAT CHECKED Jan. 6, 2002  
TRANSFERRED THIS 21st DAY OF February, 2002.

Michael E. Foster  
AUDITOR, LOGAN COUNTY, OHIO

RECORDED IN PLAT CABINET B, SLIDE 12B - 73B  
RECEIVED FOR RECORD AT 10:53 O'CLOCK A.M.

THIS 21st DAY OF February, 2002.  
Linda Harmon  
RECORDER, LOGAN COUNTY, OHIO