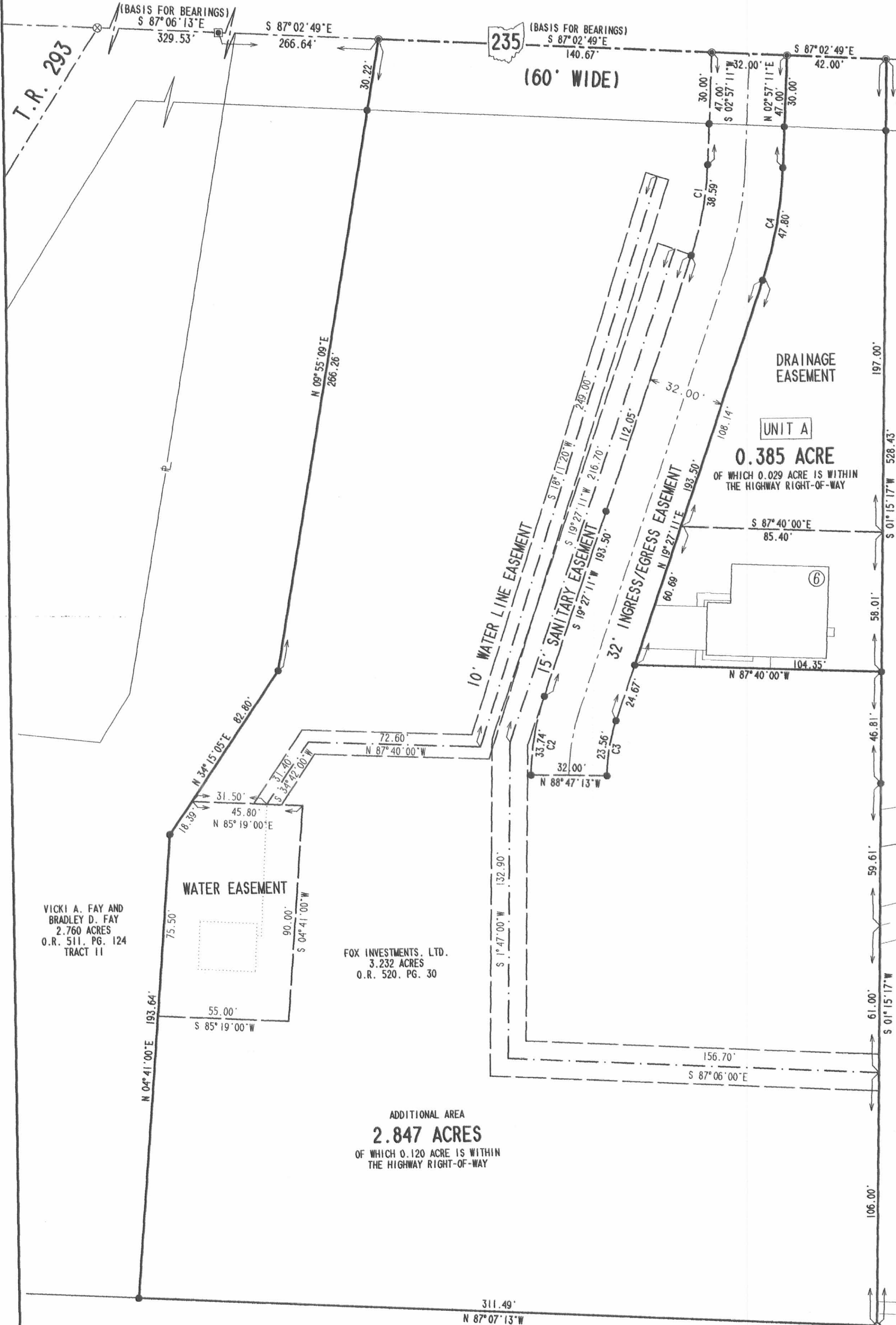


NORTH POINT LANDING CONDOMINIUMS PHASE I

2
2

VIRGINIA MILITARY SURVEY 12277 - STOKES TOWNSHIP - LOGAN COUNTY - OHIO
ALL OF THE FOX INVESTMENTS, LTD 3.232 ACRE TRACT - OFFICIAL RECORD 520, PAGE 30



CURVE	DELTA ANGLE	RADIUS	ARC	TANGENT	CHORD	CHORD BEARING
C 1	16°30'00"	134.00'	38.59'	19.43'	38.46'	S 11°12'11"W
C 2	18°14'24"	106.00'	33.74'	17.02'	33.60'	S 10°19'59"E
C 3	18°14'24"	74.00'	23.56'	11.88'	23.46'	N 10°19'59"E
C 4	16°30'00"	166.00'	47.80'	24.07'	47.64'	N 11°12'11"E

LEGEND

- 5/8" IRON ROD FOUND
- 5/8" IRON ROD SET
- 3/4" SQUARE IRON BAR FOUND
- 1/2" IRON PIPE FOUND
- ⊕ HARROW TOOTH FOUND
- UTILITY POLE
- MAG NAIL SET
- ⊗ RAILROAD SPIKE FOUND
- ⑥ DESIGN NUMBER
- UNIT NUMBER

NOTE:
THIS PLAT CONSISTS OF TWO PAGES AND EACH PAGE MUST BE PRESENT FOR A COMPLETE REPRESENTATION.

SCALE
30
FEET TO AN INCH

FRANCES D. REED
1.77 ACRES
O.R. 313, PG. 227
PARCEL I

FRANCES D. REED
1.0 ACRE
O.R. 313, PG. 227
PARCEL II

WANNEMACHER CONSTRUCTION
9.69 ACRES
O.R. 253, PG. 711

VICKI A. FAY AND
BRADLEY D. FAY
2.760 ACRES
O.R. 511, PG. 124
TRACT 11

FOX INVESTMENTS, LTD.
3.232 ACRES
O.R. 520, PG. 30

ADDITIONAL AREA
2.847 ACRES
OF WHICH 0.120 ACRE IS WITHIN
THE HIGHWAY RIGHT-OF-WAY

KINGS LANDING ALLOTMENT NO. 9
PLAT CABINET A, SLIDE 511

KING AVENUE (50')

2 WORKING DAYS
BEFORE YOU DIG
CALL TOLL FREE 800-362-2764
OHIO UTILITIES PROTECTION SERVICE.

NOTE:
THIS PLAT CONSISTS OF TWO PAGES AND EACH PAGE MUST BE PRESENT FOR A COMPLETE REPRESENTATION.

COPYRIGHT 2004 BY:
LEE SURVEYING & MAPPING CO., INC.
117 North Madriver Street
BELLEFONTAINE, OHIO 43311
(937) 593-7335
DNV/KSR D412 BFOXD04 BFOXTP0 JOB L-3246-1

J-309