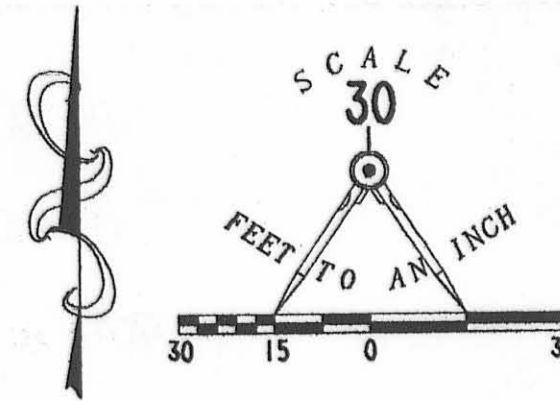
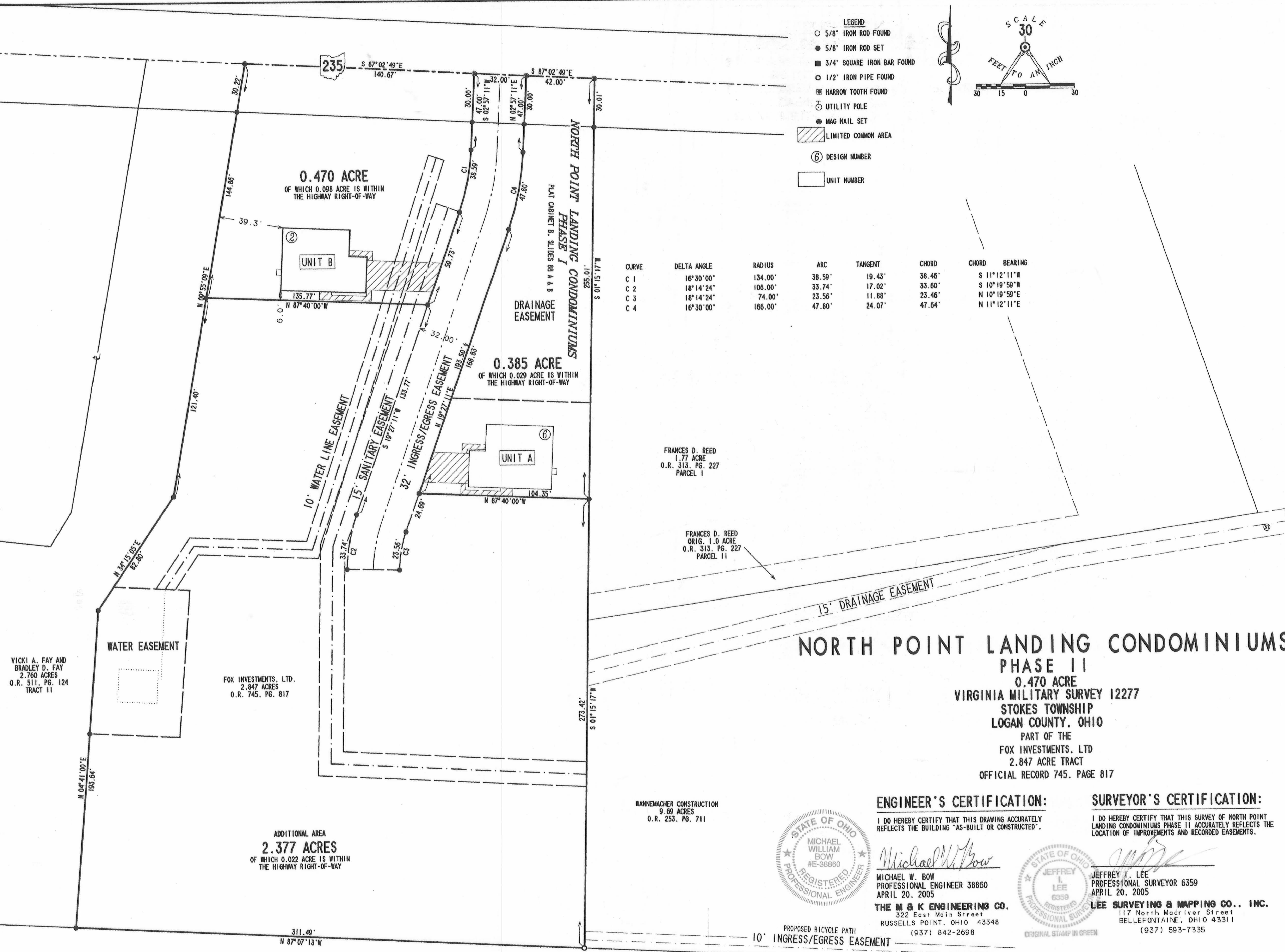


- LEGEND**
- 5/8" IRON ROD FOUND
 - 5/8" IRON ROD SET
 - 3/4" SQUARE IRON BAR FOUND
 - 1/2" IRON PIPE FOUND
 - ⊠ HARROW TOOTH FOUND
 - ⊕ UTILITY POLE
 - MAG NAIL SET
 - ▨ LIMITED COMMON AREA
 - Ⓟ DESIGN NUMBER
 - UNIT NUMBER



CURVE	DELTA ANGLE	RADIUS	ARC	TANGENT	CHORD	CHORD BEARING
C 1	16° 30' 00"	134.00'	38.59'	19.43'	38.46'	S 11° 12' 11" W
C 2	18° 14' 24"	106.00'	33.74'	17.02'	33.60'	S 10° 19' 59" W
C 3	18° 14' 24"	74.00'	23.56'	11.88'	23.46'	N 10° 19' 59" E
C 4	16° 30' 00"	166.00'	47.80'	24.07'	47.64'	N 11° 12' 11" E



**NORTH POINT LANDING CONDOMINIUMS
PHASE II**

0.470 ACRE
VIRGINIA MILITARY SURVEY 12277
STOKES TOWNSHIP
LOGAN COUNTY, OHIO
PART OF THE
FOX INVESTMENTS, LTD
2.847 ACRE TRACT
OFFICIAL RECORD 745, PAGE 817

ENGINEER'S CERTIFICATION:

I DO HEREBY CERTIFY THAT THIS DRAWING ACCURATELY REFLECTS THE BUILDING "AS-BUILT OR CONSTRUCTED".

Michael W. Bow
MICHAEL W. BOW
PROFESSIONAL ENGINEER 38860
APRIL 20, 2005

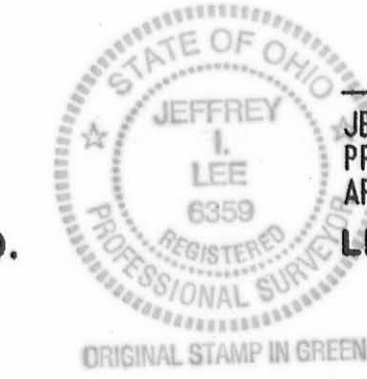
THE M & K ENGINEERING CO.
322 East Main Street
RUSSELLS POINT, OHIO 43348
(937) 842-2698

SURVEYOR'S CERTIFICATION:

I DO HEREBY CERTIFY THAT THIS SURVEY OF NORTH POINT LANDING CONDOMINIUMS PHASE II ACCURATELY REFLECTS THE LOCATION OF IMPROVEMENTS AND RECORDED EASEMENTS.

Jeffrey I. Lee
JEFFREY I. LEE
PROFESSIONAL SURVEYOR 6359
APRIL 20, 2005

LEE SURVEYING & MAPPING CO., INC.
117 North Modriver Street
BELLEFONTAINE, OHIO 43311
(937) 593-7335



APPROVED BY THE L.U.C. PLANNING COMMISSION
THIS 25th DAY OF May, 2005.

Jennifer Hanson
DIRECTOR, PLANNING COMMISSION

PRE-APPROVAL *Jan C. [Signature]* 5-26-05

PLAT CHECKED *Jan C. [Signature]* 5-26-05

TRANSFERRED THIS 26th DAY OF May, 2005.

Michael E. Godwin
AUDITOR, LOGAN COUNTY, OHIO

RECORDED IN PLAT CABINET B, SLIDE 97A, 97B

RECEIVED FOR RECORD AT 10:32 O'CLOCK A.M.

THIS 26th DAY OF May, 2005.

Linda Hanson
RECORDER, LOGAN COUNTY, OHIO

NOTES:

1. THIS PLAT CONSISTS OF TWO PAGES AND EACH PAGE MUST BE PRESENT FOR A COMPLETE REPRESENTATION.
2. EASEMENTS SHOWN ARE AS PROVIDED BY DEVELOPER. THE SURVEYOR DID NOT SEARCH FOR ADDITIONAL EASEMENTS.
3. THE WORD "CERTIFY" IS INTENDED TO BE AS DEFINED IN OHIO ADMINISTRATIVE CODE 4733-35-04(C).
4. BUILDING HEIGHT FROM PEAK OF ROOF TO GROUND FOR UNIT B IS 18.8'.

VICKI A. FAY AND
BRADLEY D. FAY
2.760 ACRES
O.R. 511, PG. 124
TRACT 11

FOX INVESTMENTS, LTD.
2.847 ACRES
O.R. 745, PG. 817

ADDITIONAL AREA
2.377 ACRES
OF WHICH 0.022 ACRE IS WITHIN
THE HIGHWAY RIGHT-OF-WAY

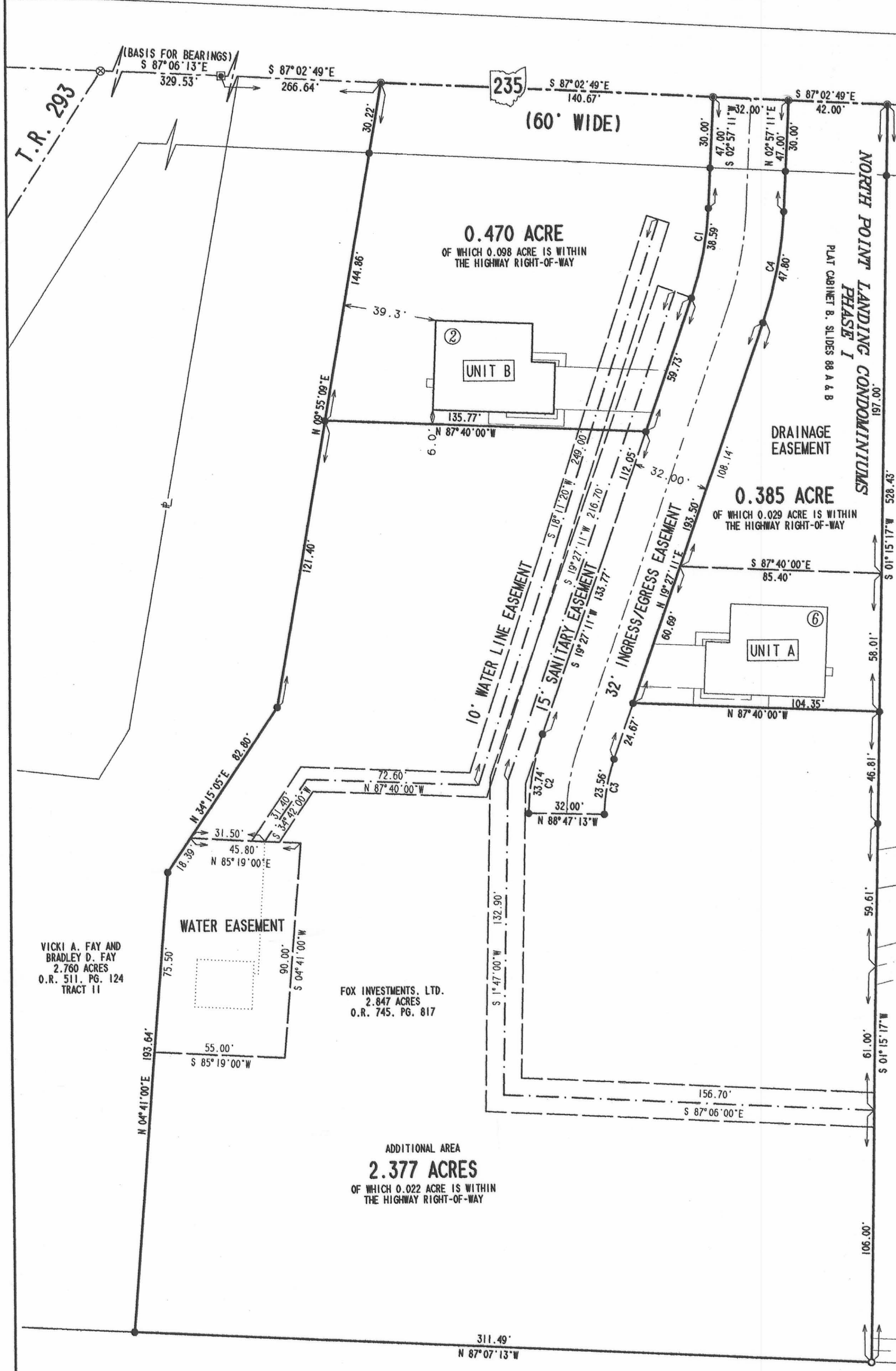
WANNEMACHER CONSTRUCTION
9.69 ACRES
O.R. 253, PG. 711

KINGS LANDING ALLOTMENT NO. 9
PLAT CABINET A, SLIDE 511

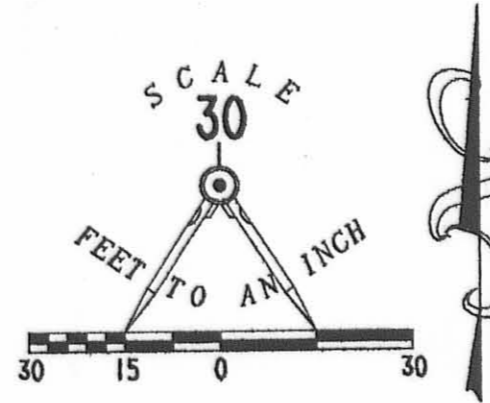
NORTH POINT LANDING CONDOMINIUMS PHASE II

2
2

VIRGINIA MILITARY SURVEY 12277 - STOKES TOWNSHIP - LOGAN COUNTY - OHIO
PART OF THE FOX INVESTMENTS, LTD 2.847 ACRE TRACT - OFFICIAL RECORD 745, PAGE 817



CURVE	DELTA ANGLE	RADIUS	ARC	TANGENT	CHORD	CHORD BEARING
C 1	16°30'00"	134.00'	38.59'	19.43'	38.46'	S 11°12'11"W
C 2	18°14'24"	106.00'	33.74'	17.02'	33.60'	S 10°19'59"W
C 3	18°14'24"	74.00'	23.56'	11.88'	23.46'	N 10°19'59"E
C 4	16°30'00"	166.00'	47.80'	24.07'	47.64'	N 11°12'11"E



- LEGEND
- 5/8" IRON ROD FOUND
 - 5/8" IRON ROD SET
 - 3/4" SQUARE IRON BAR FOUND
 - 1/2" IRON PIPE FOUND
 - ⊠ HARROW TOOTH FOUND
 - ⊕ UTILITY POLE
 - MAG NAIL SET
 - ⊗ RAILROAD SPIKE FOUND
 - ⑥ DESIGN NUMBER
 - UNIT NUMBER

NOTE:
THIS PLAT CONSISTS OF TWO PAGES AND EACH PAGE
MUST BE PRESENT FOR A COMPLETE REPRESENTATION.

FRANCES D. REED
1.77 ACRE
O.R. 313, PG. 227
PARCEL I

FRANCES D. REED
ORIG. 1.0 ACRE
O.R. 313, PG. 227
PARCEL II

WANNEMACHER CONSTRUCTION
9.69 ACRES
O.R. 253, PG. 711

VICKI A. FAY AND
BRADLEY D. FAY
2.760 ACRES
O.R. 511, PG. 124
TRACT II

FOX INVESTMENTS, LTD.
2.847 ACRES
O.R. 745, PG. 817

ADDITIONAL AREA
2.377 ACRES
OF WHICH 0.022 ACRE IS WITHIN
THE HIGHWAY RIGHT-OF-WAY

KINGS LANDING ALLOTMENT NO. 9
PLAT CABINET A, SLIDE 511

2 WORKING DAYS
BEFORE YOU DIG
CALL TOLL FREE 800-362-2764
OHIO UTILITIES PROTECTION SERVICE.

COPYRIGHT 2005 BY:
LEE SURVEYING & MAPPING CO., INC.
117 North Madriver Street
BELLEFONTAINE, OHIO 43311
(937) 593-7335
KSR D0405 3248045 BFOXTOP0.ASC L-3248-1

KING AVENUE (50')