

ANNEXATION DESCRIPTION
TERRITORY TO BE ANNEXED TO THE VILLAGE OF DEGRAFF
LYING IN SECTION 7, TOWN 2, RANGE 14
PLEASANT TOWNSHIP
LOGAN COUNTY, OHIO

LYING IN SECTION 7, TOWN 2, RANGE 14, PLEASANT TOWNSHIP, LOGAN COUNTY, OHIO.

BEING OUT OF THE VILLAGE OF DEGRAFF 4.400 ACRE TRACT AS DEEDED AND DESCRIBED IN OFFICIAL RECORD 991, PAGE 903 OF THE LOGAN COUNTY RECORDS OF DEEDS AND BEING MORE PARTICULARLY DESCRIBED AS FOLLOWS:

COMMENCING ON A POINT ON THE INTERSECTION OF THE SOUTH LINE OF PLEASANT TOWNSHIP AND THE CENTER-LINE OF COUNTY HIGHWAY 24 AT STATION 0+00 (LOGAN COUNTY ENGINEER'S FIELD BOOK 516, PAGE 63).

THENCE, WITH THE SOUTH LINE OF PLEASANT TOWNSHIP, S 85°-21'-35"E, A DISTANCE OF 245.54 FEET TO A POINT.

THENCE, WITH THE EAST LINE EXTENDED AND THE EAST LINE OF THE HERSCHEL A. SMITH AND JOSEFINA A. SMITH, TRUSTEES, 0.43 ACRE TRACT (O.R. 938, PG. 323), N 04°-41'-23"E, A DISTANCE OF 207.39 FEET TO A POINT.

THENCE, WITH THE WEST LINE OF THE VILLAGE OF DEGRAFF, OHIO 4.95 ACRE TRACT (VOL. 353, PG. 973), N 04°-41'-23"E, A DISTANCE OF 125.00 FEET TO A POINT ON A CORNER OF THE EXISTING VILLAGE OF DEGRAFF CORPORATION LINE AT THE TRUE POINT OF BEGINNING.

THENCE, WITH A SOUTH LINE OF THE EXISTING VILLAGE OF DEGRAFF CORPORATION LINE, N 85°-26'-46"W, A DISTANCE OF 237.47 FEET TO A POINT.

THENCE, WITH THE EASTERLY LINES OF THE OTILJA HARROD 0.71 ACRE TRACT (VOL. 375, PG. 382), THE CARLOS E. REYNOS 0.50 ACRE TRACT (O.R. 366, PG. 199), THE MELISSA R. BELL 0.50 ACRE TRACT (O.R. 1123, PG. 611), THE FRANKLIN M. WILKINSON, JR. 0.50 ACRE TRACT (O.R. 265, PG. 490) AND THE EARL I. DODDS 0.50 ACRE TRACT (O.R. 97, PG. 180), N 25°-43'-12"W, A DISTANCE OF 523.30 FEET TO A POINT.

THENCE, WITH THE SOUTH LINE OF THE REMAINDER OF THE DAVID A. REAMES AND DIXIE D. REAMES 20.968 ACRE TRACT (O.R. 116, PG. 610), S 85°-20'-15"E, A DISTANCE OF 500.58 FEET TO A POINT ON A WEST LINE OF THE EXISTING VILLAGE OF DEGRAFF CORPORATION LINE.

THENCE, WITH A WEST LINE OF THE EXISTING VILLAGE OF DEGRAFF CORPORATION LINE AND THE WEST LINE OF THE VILLAGE OF DEGRAFF ORIGINAL 22.029 ACRE TRACT (O.R. 105, PG. 219), S 04°-27'-05"W, A DISTANCE OF 426.60 FEET TO A POINT.

THENCE, WITH A WEST LINE OF THE EXISTING VILLAGE OF DEGRAFF CORPORATION LINE AND THE WEST LINE OF THE AFORESAID 4.95 ACRE TRACT, S 04°-41'-23"W, A DISTANCE OF 24.39 FEET TO THE POINT OF BEGINNING.

CONTAINING 3.824 ACRES.

THE BASIS FOR BEARINGS IS THE SOUTH LINE OF PLEASANT TOWNSHIP, BEING S 85°-21'-35"E, AND ALL OTHER BEARINGS ARE FROM ANGLES AND DISTANCES MEASURED IN A FIELD SURVEY BY LEE SURVEYING AND MAPPING CO., INC. ON APRIL 15, 2010.

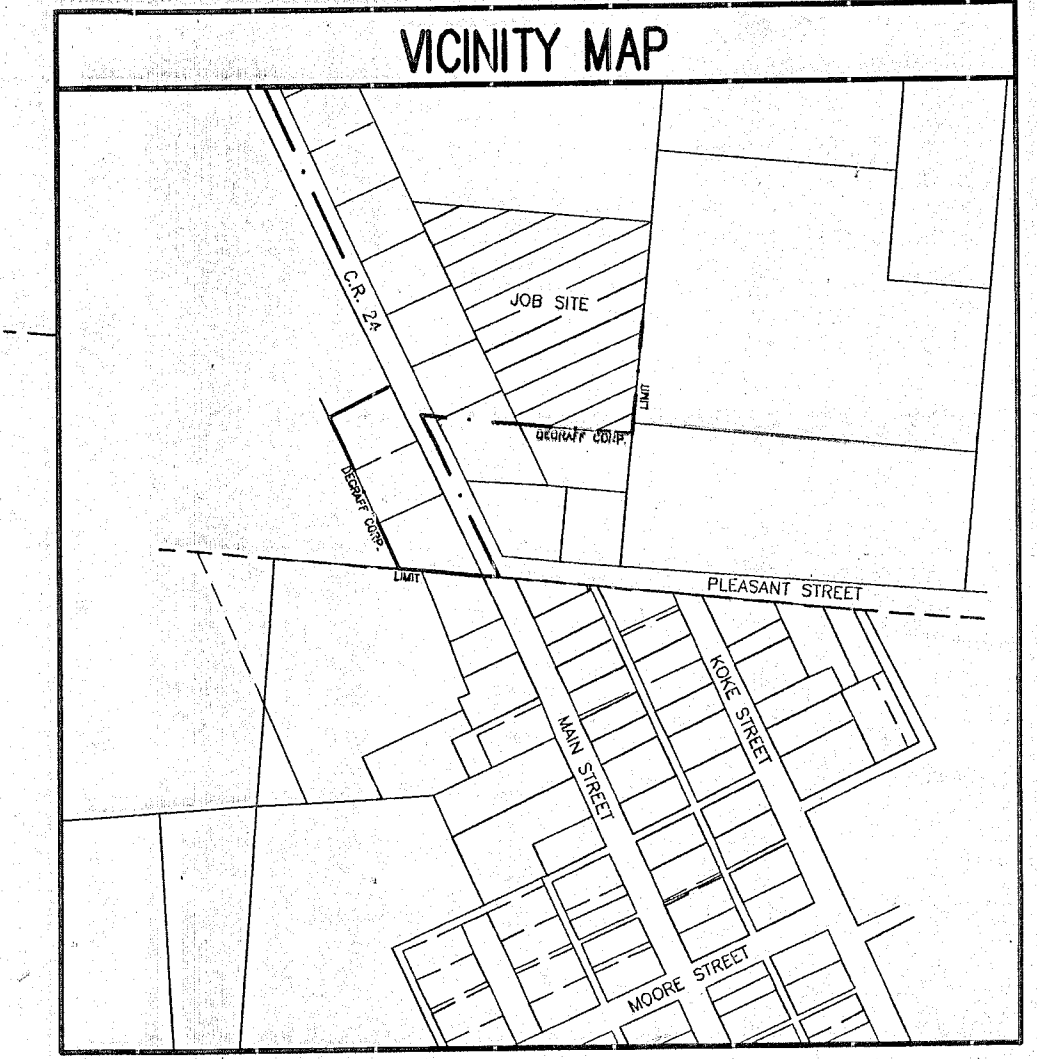
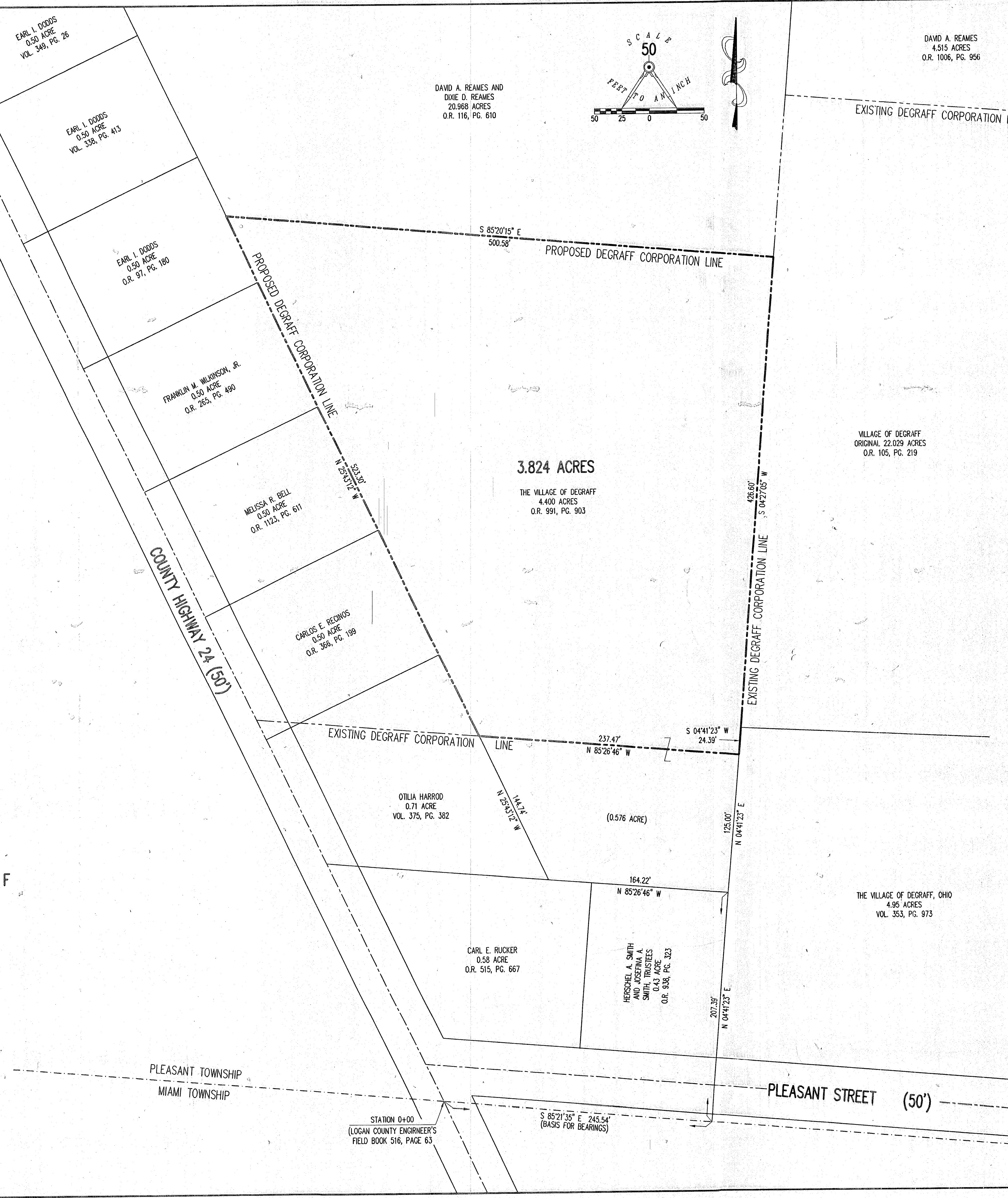
DESCRIPTION PREPARED BY WILLIAM K. BRUCE, PROFESSIONAL SURVEYOR 7437, ON MARCH 17, 2014.

VILLAGE OF DEGRAFF
ANNEXATION AND RE-ZONING MAP OF
3.824 ACRES OF WHICH:

3.824 ACRES ARE OUT OF
THE VILLAGE OF DEGRAFF
4.400 ACRE TRACT
OFFICIAL RECORD 991, PAGE 903

SECTION 7, TOWN 2, RANGE 14
PLEASANT TOWNSHIP
LOGAN COUNTY, OHIO

2 WORKING DAYS
BEFORE YOU DIG
 CALL TOLL FREE 800-362-2764
 OHIO WIRELESS PROTECTION SERVICE



LOGAN COUNTY COMMISSIONERS	<i>Anthony F. Cole</i>	12-16-14
	<i>John Paulino</i>	12-16-14
	<i>D.A. Dill</i>	12-16-14
LOGAN COUNTY ENGINEER	<i>Scott C. Coleman</i>	11-22-14
CHAIRMAN, TOWNSHIP TRUSTEES	<i>Stephen L. Sanders</i>	12-09-14
L.U.C. PLANNING DIRECTOR	<i>David Good</i>	12-11-14
MAYOR OF DEGRAFF	<i>J.L. Corcoran</i>	8-2-14
PRESIDENT, VILLAGE COUNCIL	<i>Sue E. Walls</i>	12-16-14
CLERK, VILLAGE COUNCIL	<i>Linda L. Sanford</i>	9-2-14
PLAT PRE-APPROVED	<i>Suzanne M. Yost</i>	3-21-14
PLAT CHECKED	<i>Suzanne M. Yost</i>	12-19-14
VILLAGE ORDINANCE NUMBER	ORR 17-06	

TRANSFERRED THIS 19th DAY OF December, 20 14

AUDITOR, LOGAN COUNTY, OHIO *Michael E. Jones*

RECEIVED FOR RECORD AT 3:46 O'CLOCK P. M.

THIS 19th DAY OF December, 20 14

RECORDER, LOGAN COUNTY, OHIO *Patricia A. Myers*

RECORDED IN PLAT CABINET B SLIDE 133A

PREPARED BY:
William K. Bruce
 WILLIAM K. BRUCE
 PROFESSIONAL SURVEYOR 7437
 MARCH 17, 2014

STATE OF OHIO
 REGISTERED PROFESSIONAL SURVEYOR

COPYRIGHT 2014 BY:
 LEE SURVEYING AND MAPPING CO., INC.
 117 North Modriver Street
 Bellefontaine, OH 43111
 (937) 593-7335
 www.leeinc.us
 survs@leeinc.us
 KSS D0314 49380314 L-4938-1