

Sec. A

19

$A = 5^{\circ} 28'$
 $D = 2^{\circ} 00'$
 $R = 2864.93$
 $T = 136.7$
 $PI = 114.32$
 $L = 213.55$

Bert B. Gantz ^④ .87 Acres

Jennie Haines ^① .13 Acres

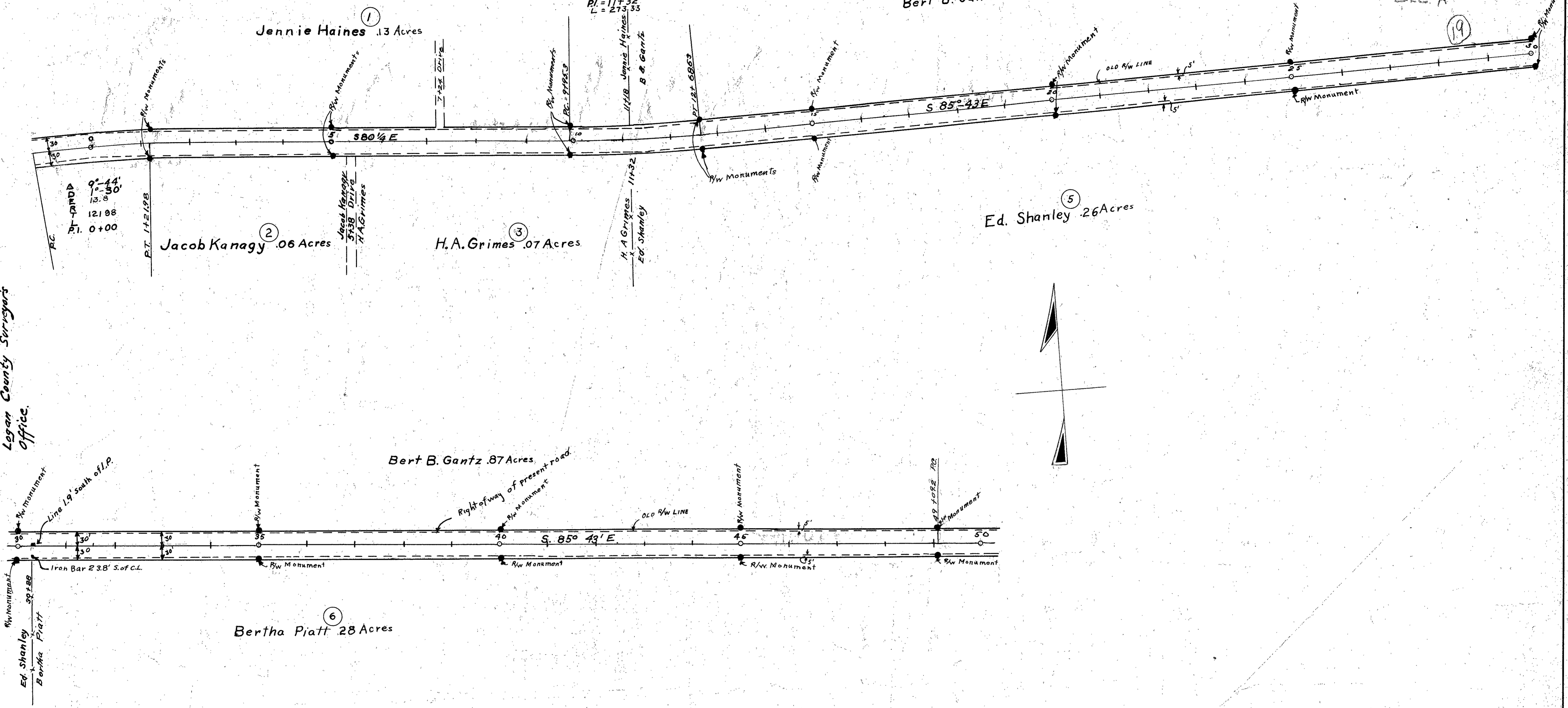
Jacob Kanagy ^② .06 Acres

H.A. Grimes ^③ .07 Acres

Ed. Shanley ^⑤ .26 Acres

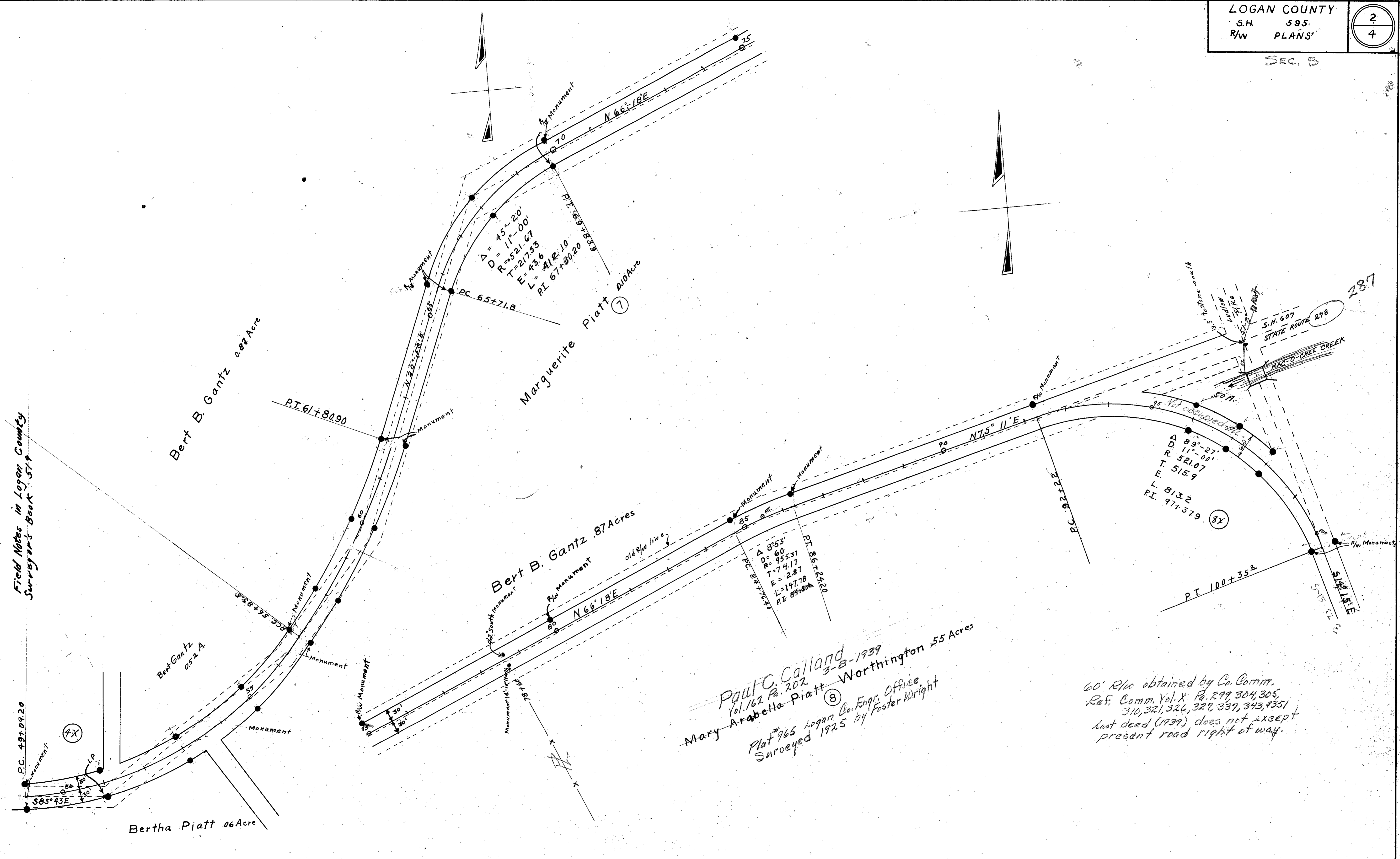
Bertha Piatt ^⑥ .28 Acres

Field Notes Book 519
Logan County Surveyors
Office.



SEC. B

L-14



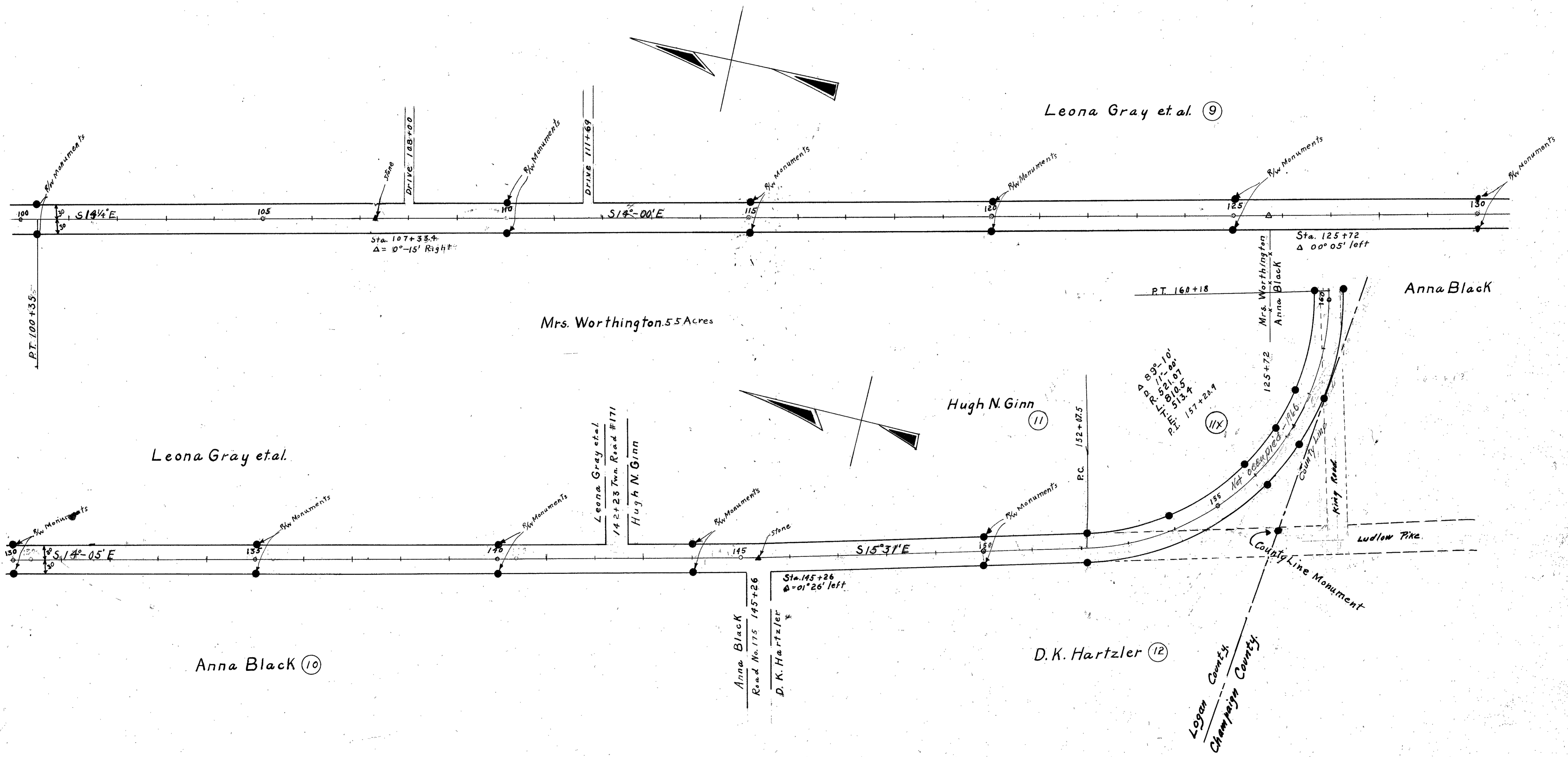
Field Notes in Logan County
Surveyor's Book 519

Paul C. Calland
Vol. 162 Pa. 202
Mary Arabella Piatt
Plat 965 Logan Co. Engr. Office
Surveyed 1925 by Foster Wright

60' R/W obtained by Co. Comm.
Ref. Comm. Vol. X Pa. 299, 304, 305,
310, 321, 324, 327, 337, 343, 4351
last deed (1939) does not except
present road right of way.

SEC. B1

Field Notes in Logan County
Surveyors Book # 579



Anna Black (10)

D.K. Hartzler (12)

Hugh N. Ginn (11)

Leona Gray et al. (9)

Anna Black

Mrs. Worthington 5.5 Acres

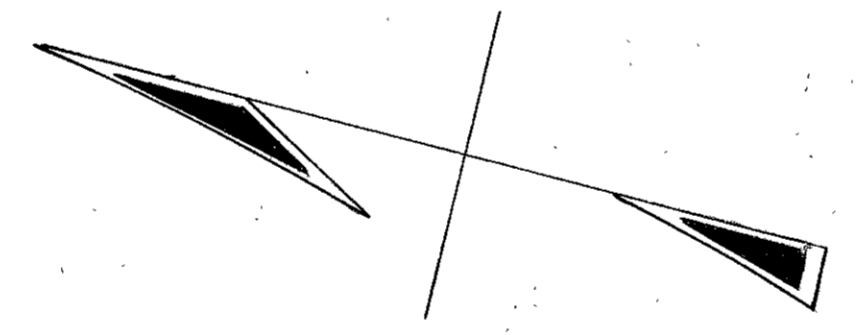
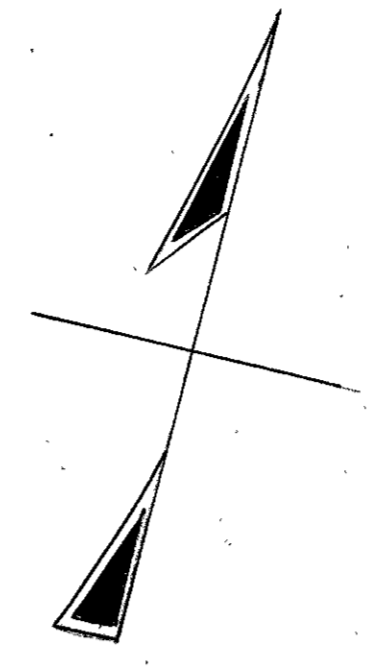
S.R. 245

LOGAN COUNTY
S.H. 595
R/W PLANS

4
4

SCALE

7-14



Hugh Ginn (12)

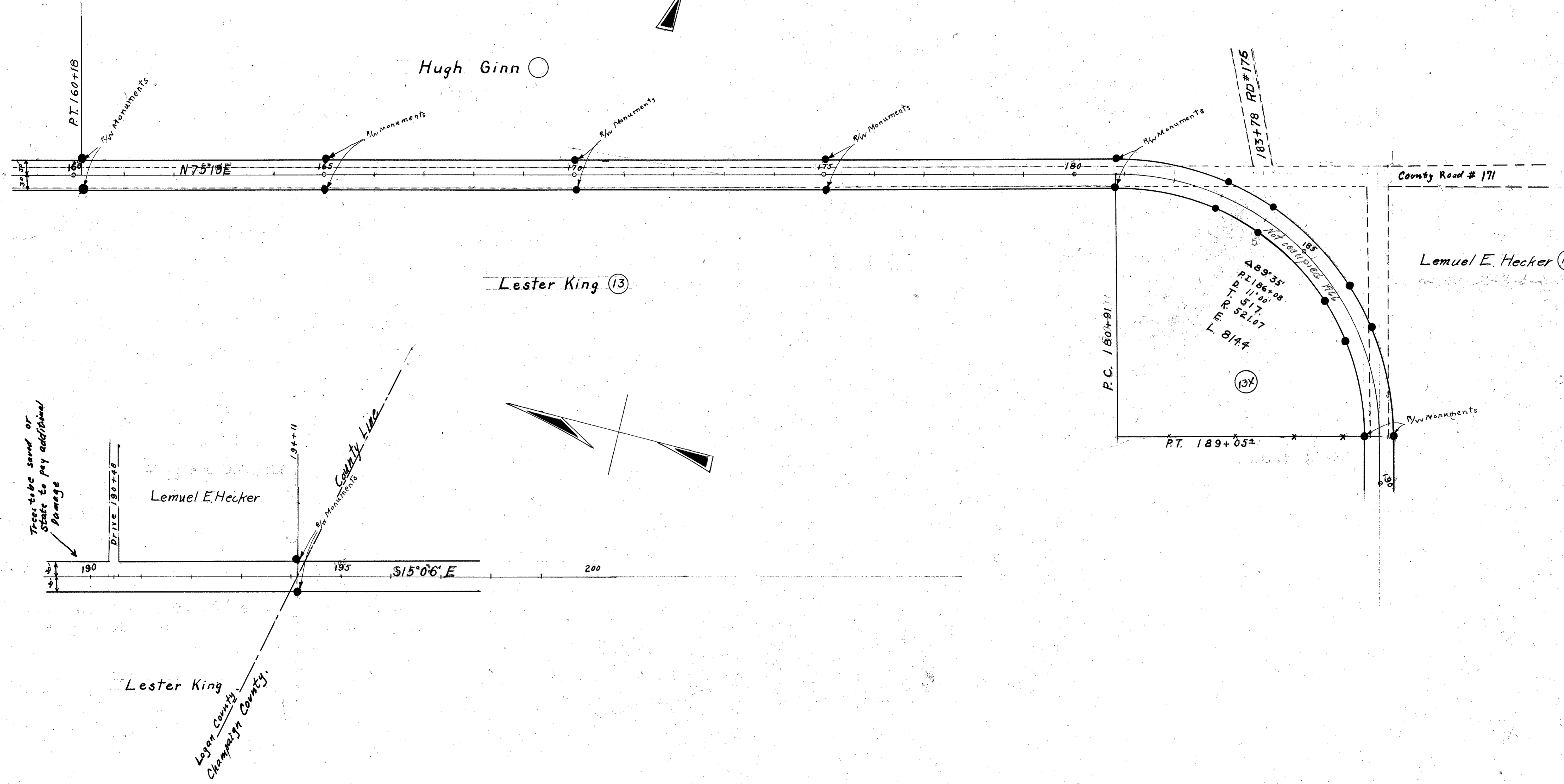
Lester King (13)

Lemuel E. Hecker (14)

Lemuel E. Hecker

Lester King

Logan County
Champaign County



Field Notes in Logan County
Surveyor's Book 519

Trees to be saved or
State to pay additional
damage

DRIVE 190+48

194+11

County Line

S 15° 0' 6" E

200

P.C. 180+91.77

P.T. 189+05.2

(13)

R/W Monuments