

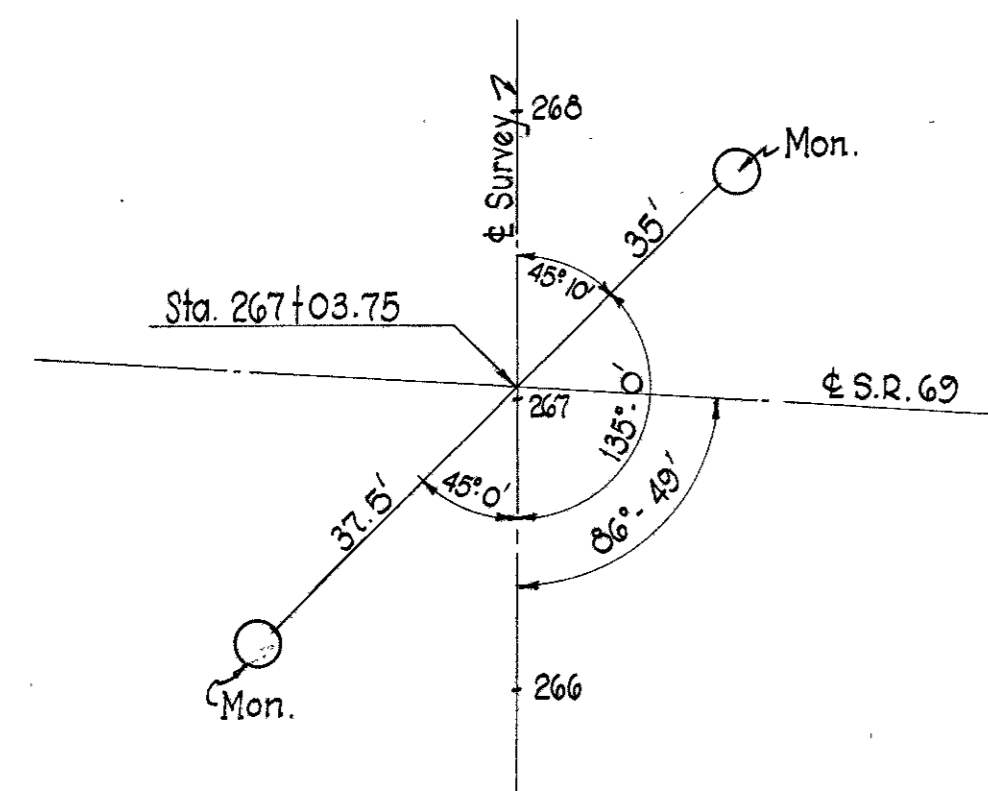
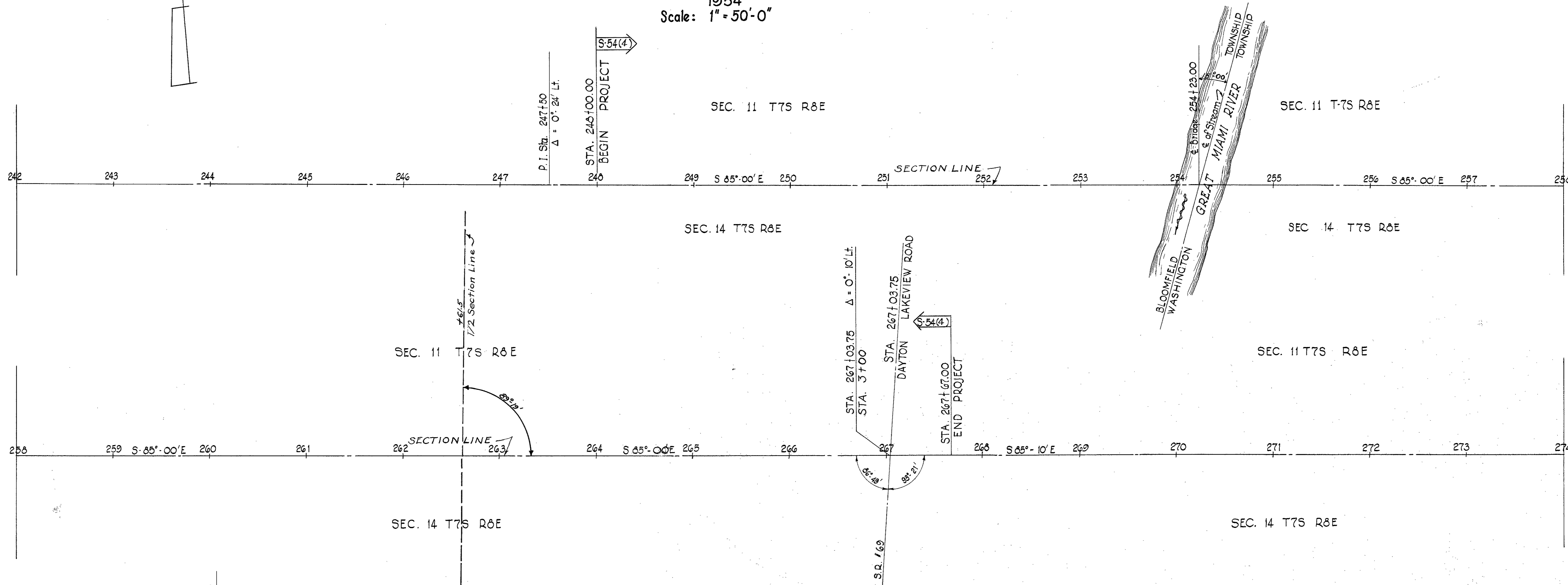
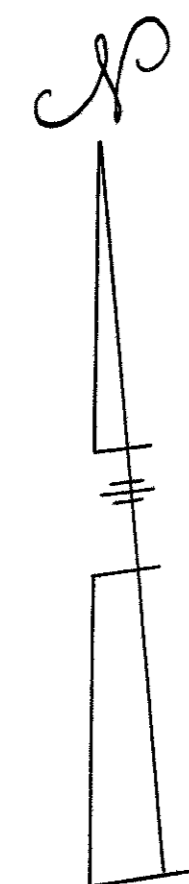
FED. RD. DIVISION	STATE	PROJECT	TYPE FUNDS
2	OHIO		

LOGAN COUNTY  
LOG ~ 274 (4.67-5.03)  
1954

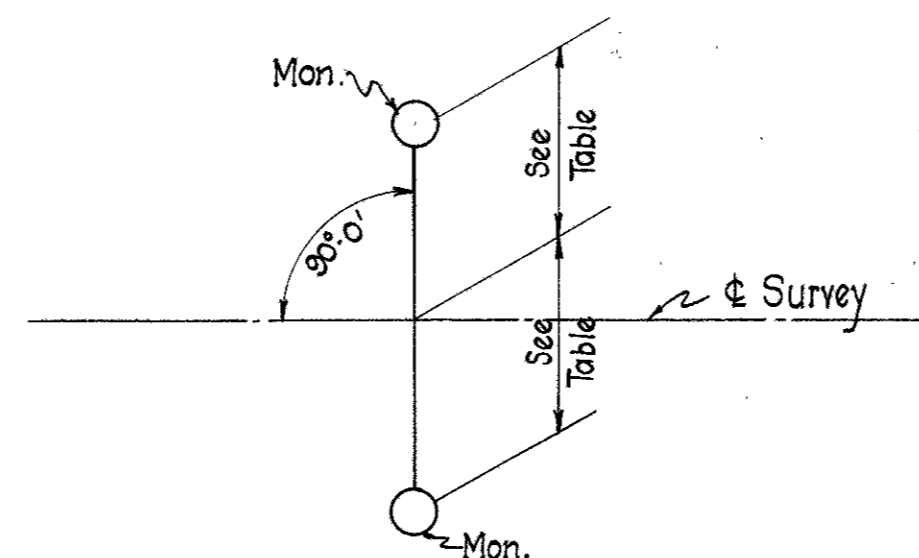
# LOCATION PLAN

LOGAN COUNTY  
LOG - 274 (4.67-5.03) CARTHAGENA ~ JACKSON CENTER ~ RUSHSYLVANIA ROAD  
BLOOMFIELD & WASHINGTON TOWNSHIP

1954  
Scale: 1" = 50'-0"



SPECIAL DETAIL FOR SETTING REFERENCE POINTS STA 267+03.75



TYPICAL DETAIL FOR SETTING REFERENCE POINTS

STATION	REFERENCE POINTS TO BE SET AFTER CONSTRUCTION	
	Distance from & Left	Distance from & Right
240+00	16'	16'
253+00	16'	16'
250+00	16'	16'
263+00	16'	16'
266+50	16'	16'
267+03.75	See Special	Detail

Completed 16 Jan 1956 By: K. Stewart

Recorded  
Plat Book - 1 - P.7

APPROVED 3-15-54 O.W. Ensbreyer  
LOCATION & DESIGN ENGINEER

REG. PROFESSIONAL ENGINEER No. 1336

