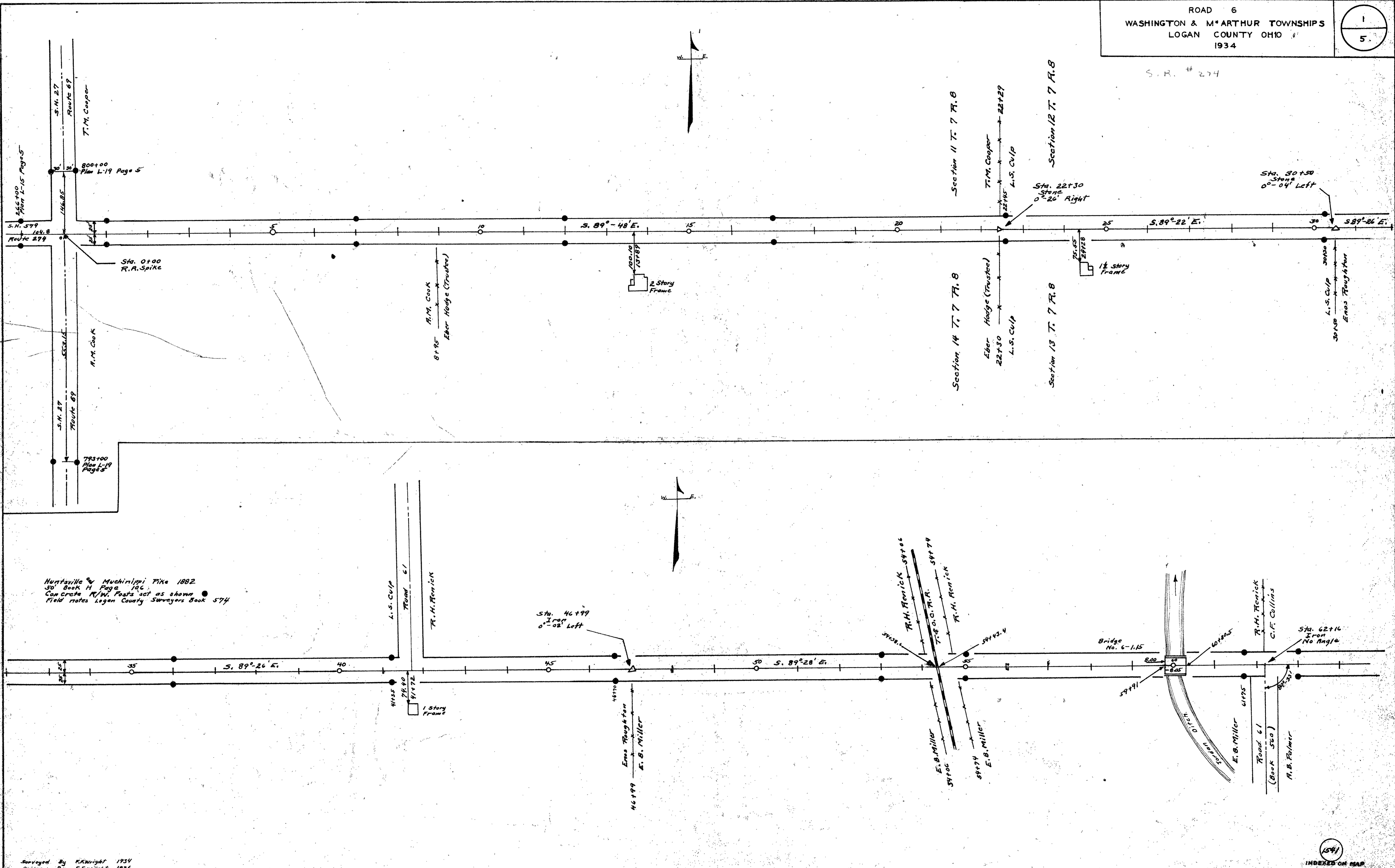
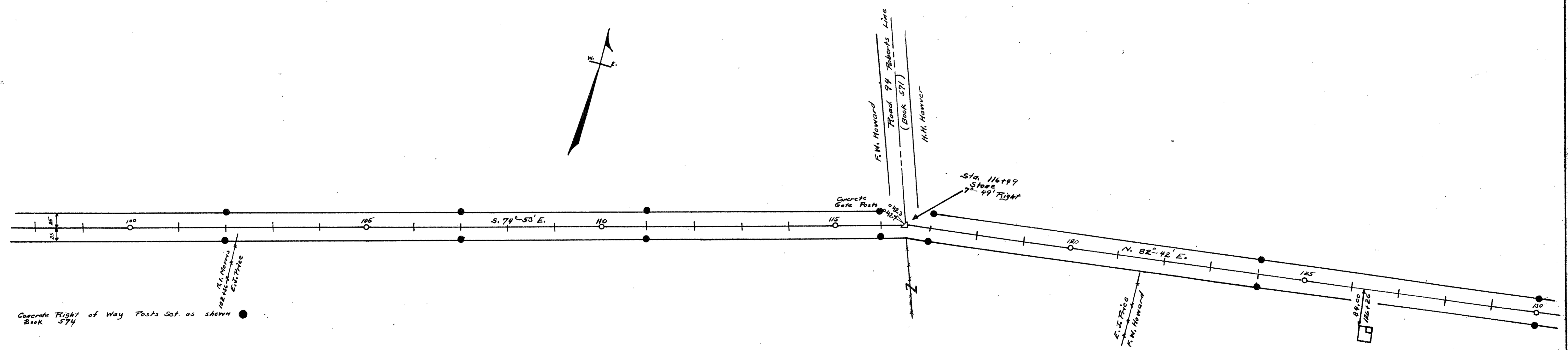
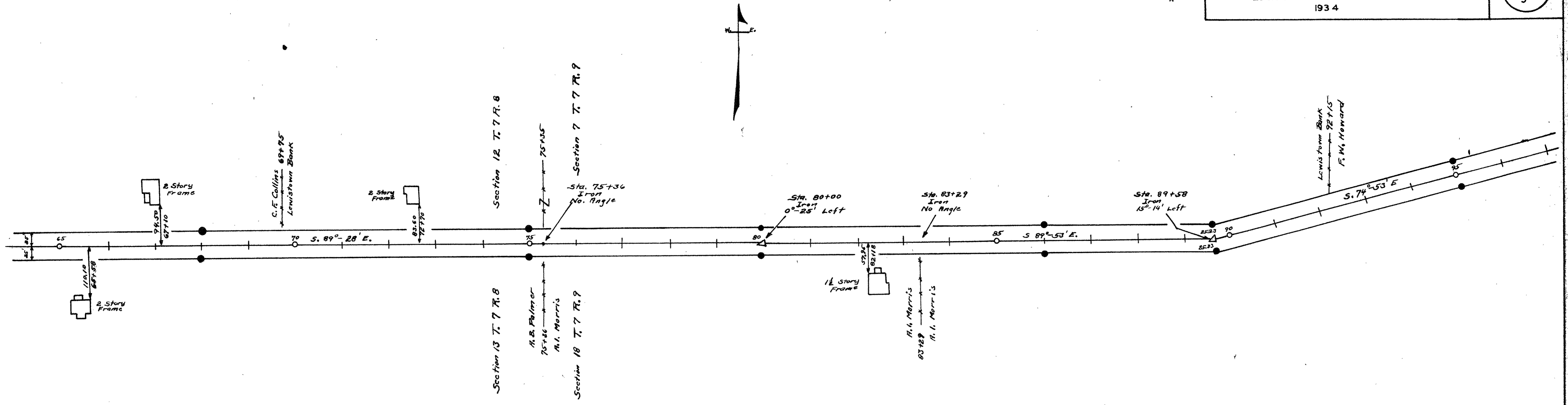


S. R. # 274

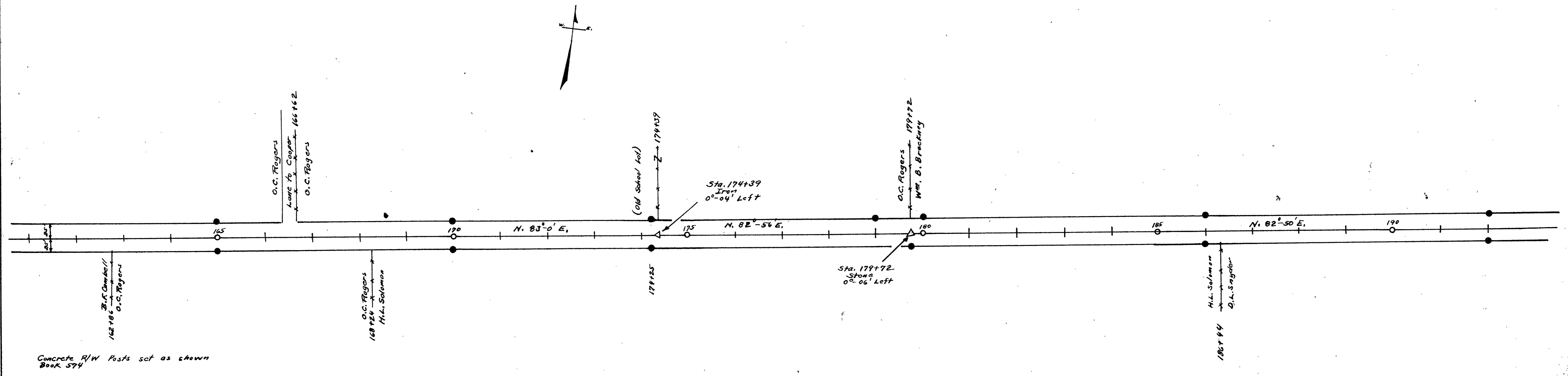
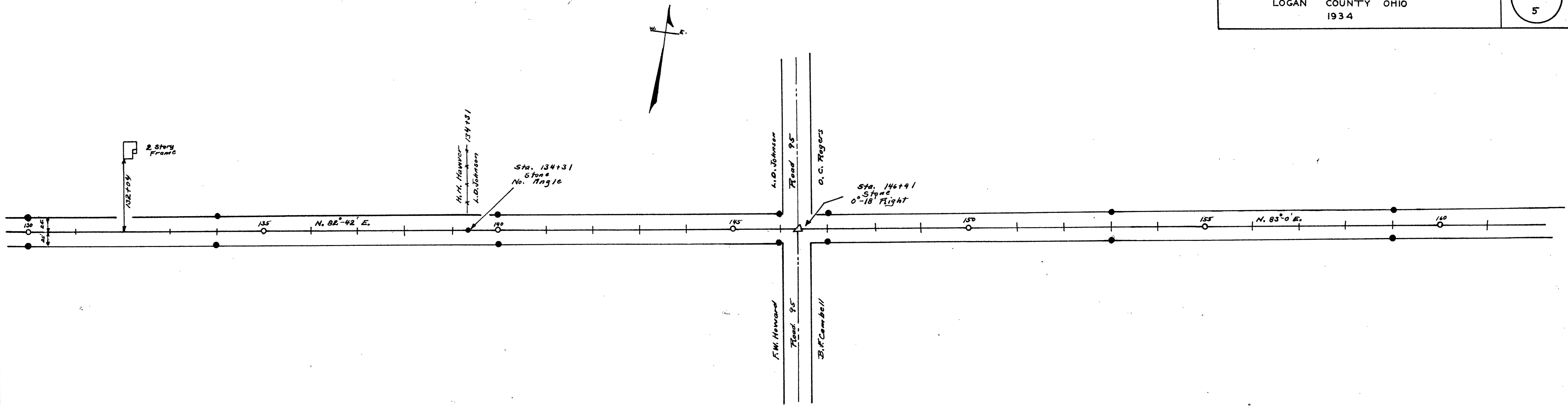
ROAD 6



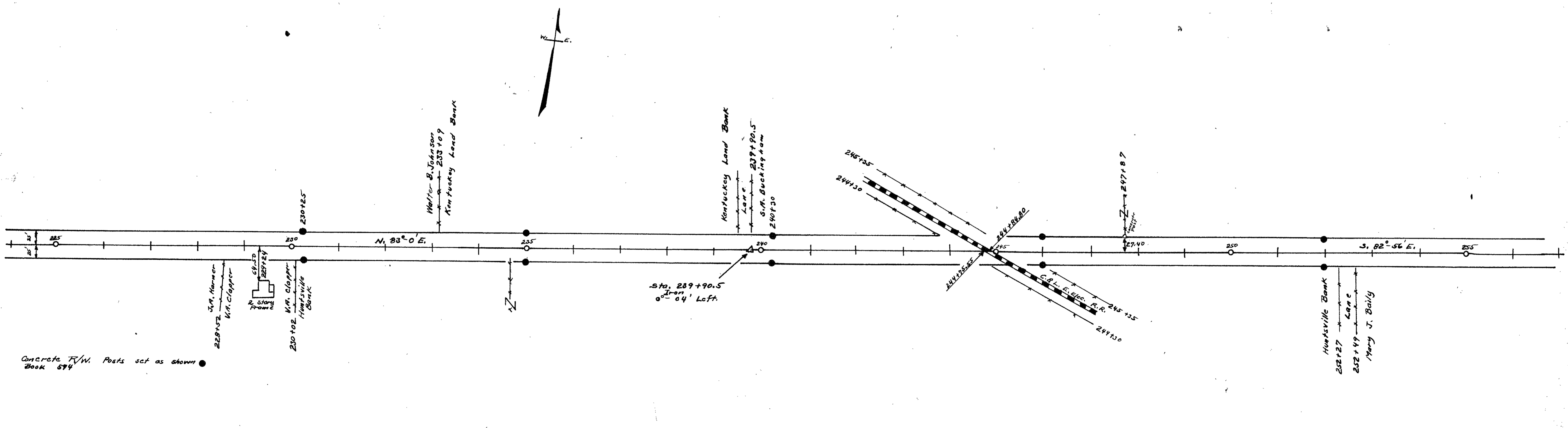
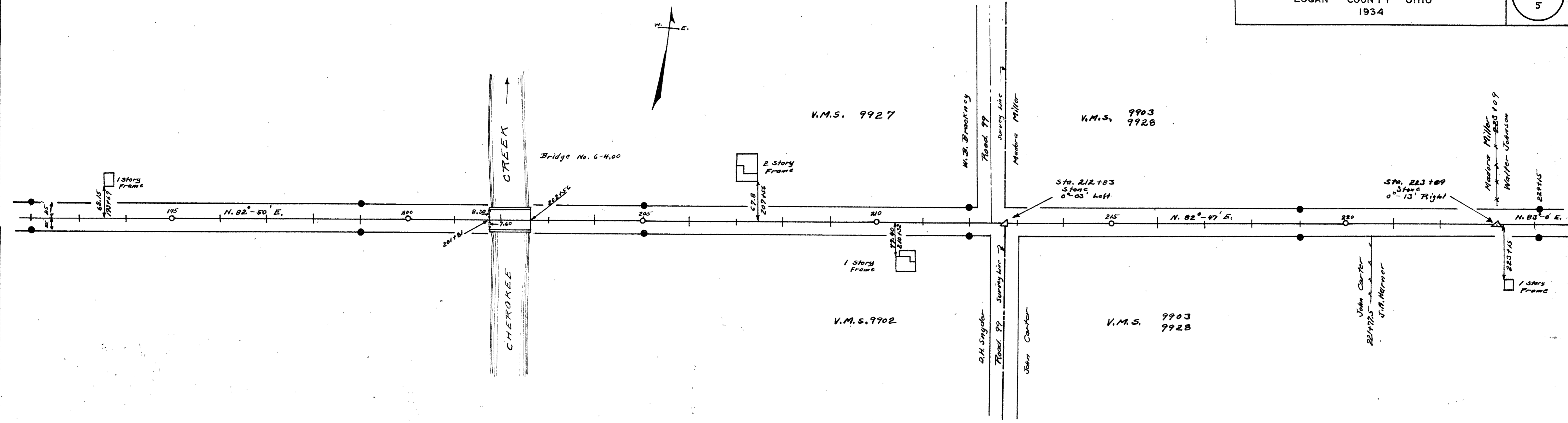
Huntsville & Muehlenpfi Fike 1882
 30' Book H Page 106
 Con Grantee R/W. Posts set as shown
 Field notes Logan County Surveyors Book 574



Concrete Right of Way Posts Set as shown Book 574



Concrete R/W Posts set as shown
Book 574

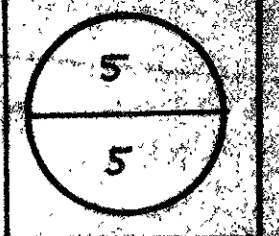


Concrete R/W Posts set as shown
Book 594

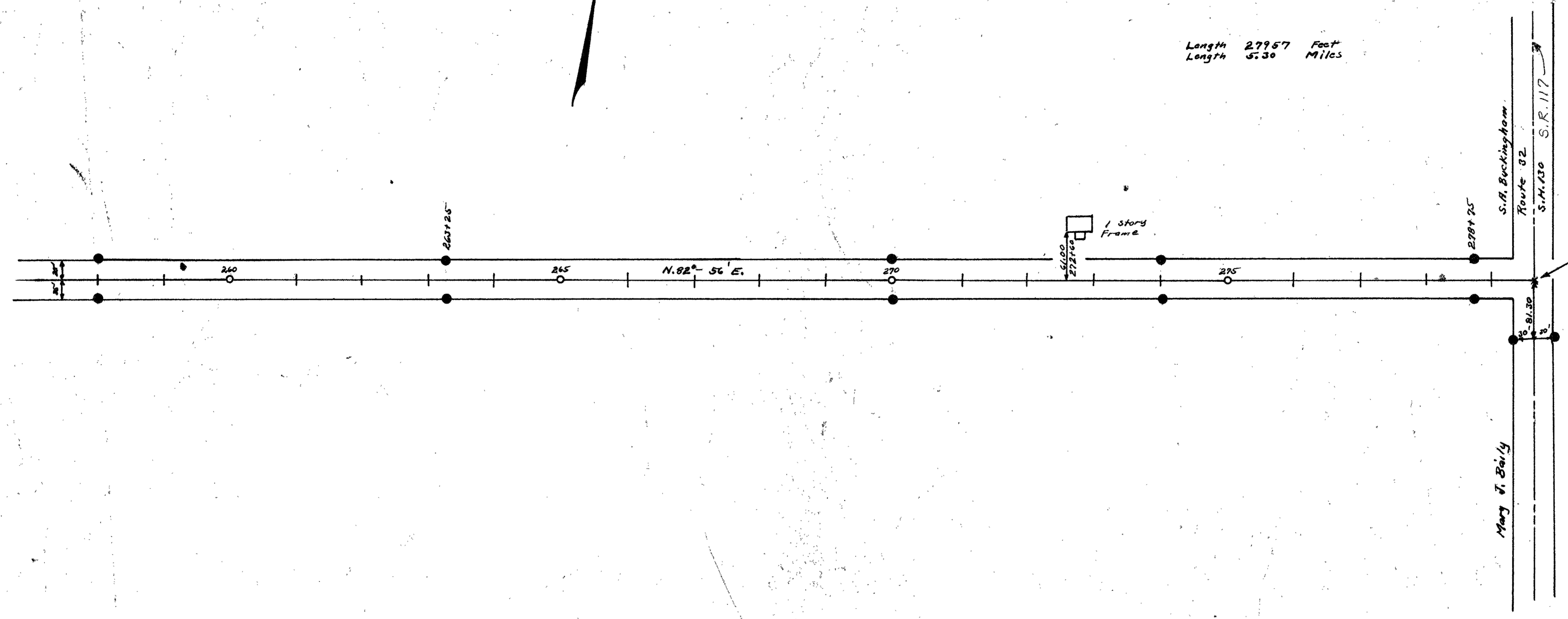
Surveyed by F.R. Wright 1934
Drawn by F.R. Wright 1936

SR-229

ROAD 6
WASHINGTON & M'ARTHUR TOWNSHIPS
LOGAN COUNTY OHIO
1934



Length 27957 Feet
Length 5.30 Miles



Sta. 279+57
Cross on Concrete
5.00 S. of Joint

R/W Posts
294+00
Plan L-27 Page 5

HUNTSVILLE

Concrete R/W Posts set as shown
Book 574

Surveyed by F.R. Wright 1934
Drawn by F.R. Wright 1936

INDEXED ON MAP