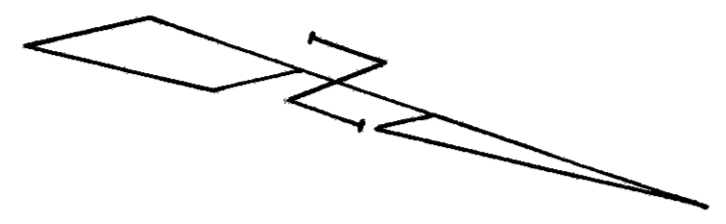


PERRY TOWNSHIP V.M.S. 5089

FED. RD. DIVISION	STATE	PROJECT	
2	OHIO		1964

1/1

LOGAN COUNTY
LOG-292-0466
RIW PLAN

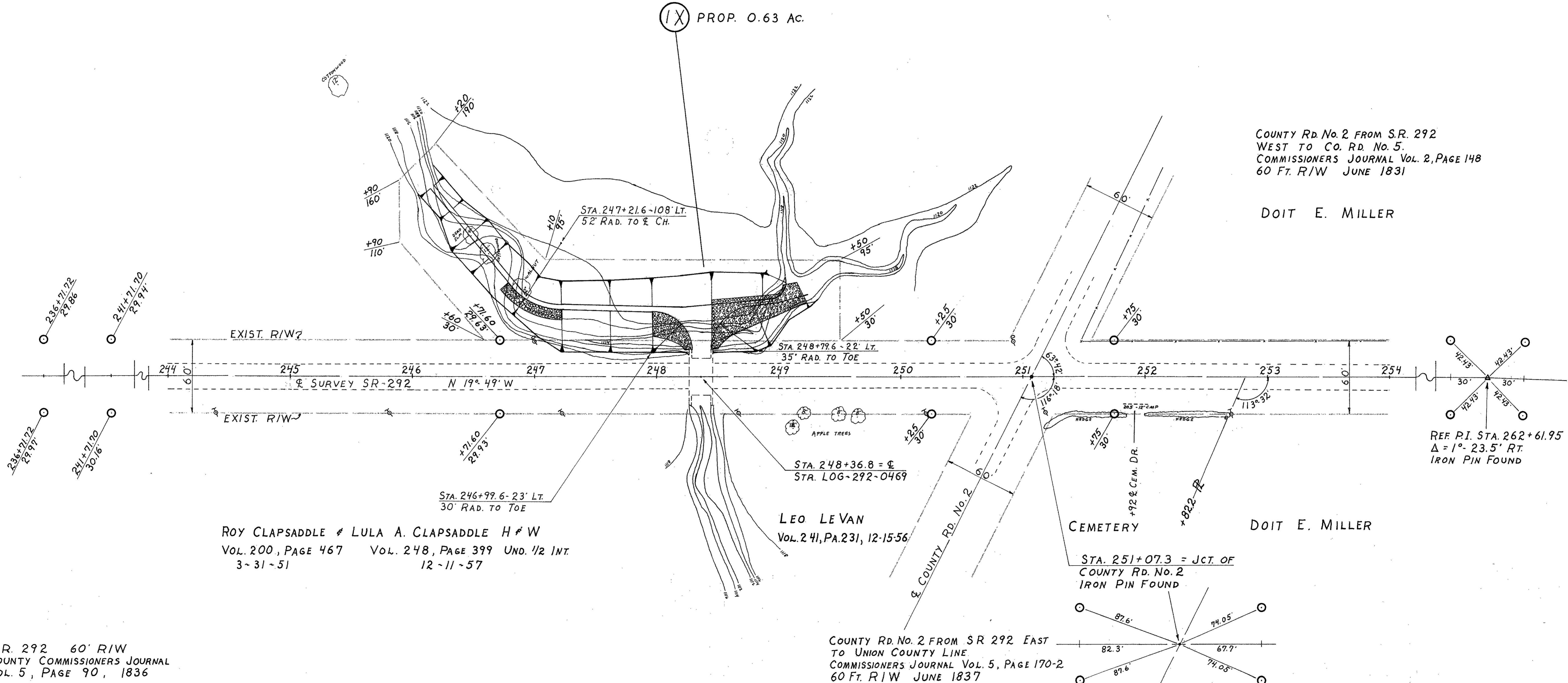


ROBERT JACKSON & DELLA JACKSON H#W
Vol. 181, PAGE 440 10-13-44

(IX) PROP. 0.63 AC.

COUNTY Rd. No. 2 FROM S.R. 292
WEST TO CO. RD. No. 5.
COMMISSIONERS JOURNAL Vol. 2, PAGE 148
60 FT. R/W JUNE 1831

DOIT E. MILLER



ROY CLAPSADDLE & LULA A. CLAPSADDLE H#W
Vol. 200, PAGE 467 Vol. 248, PAGE 399 UND. 1/2 INT.
3-31-51 12-11-57

LEO LE VAN
Vol. 241, PA. 231, 12-15-56

STA. 251+07.3 = JCT. OF
COUNTY Rd. No. 2
IRON PIN FOUND

REF. P.I. STA. 262+61.95
Δ = 1° 23.5' RT.
IRON PIN FOUND

COUNTY Rd. No. 2 FROM SR 292 EAST
TO UNION COUNTY LINE
COMMISSIONERS JOURNAL Vol. 5, PAGE 170-2
60 Ft. R/W JUNE 1837

S.R. 292 60' RIW
COUNTY COMMISSIONERS JOURNAL
Vol. 5, PAGE 90, 1836

PERRY TOWNSHIP V.M.S. 5089

SCALE 1"=40'
REVISED
DRAWN 6-64 A.J.S.