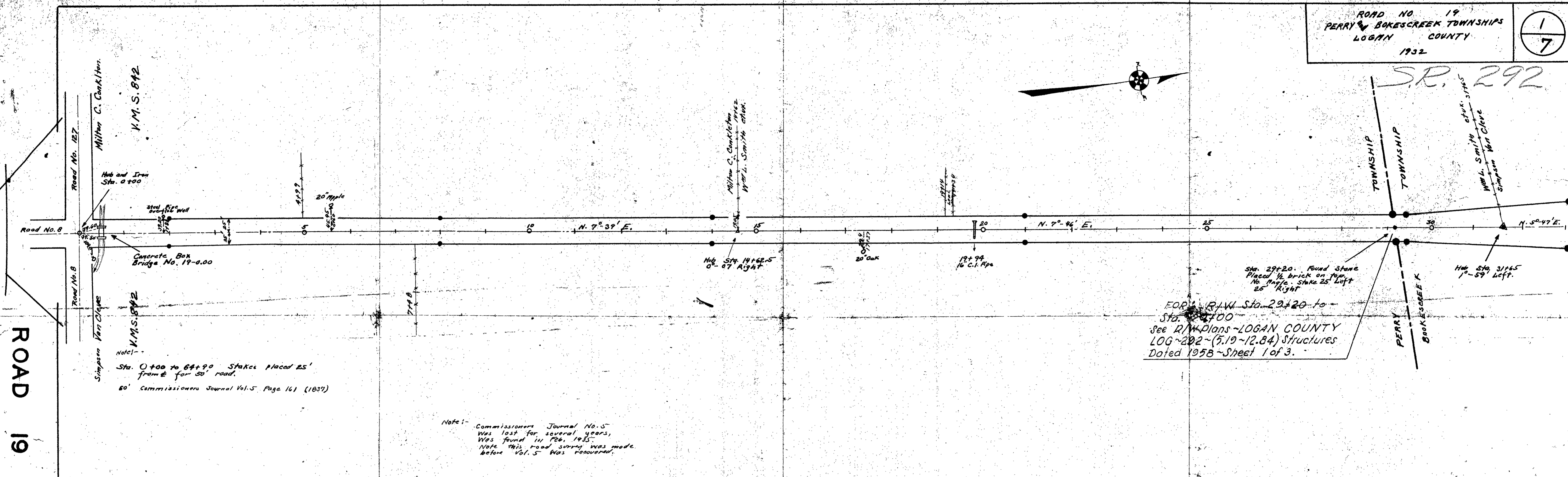
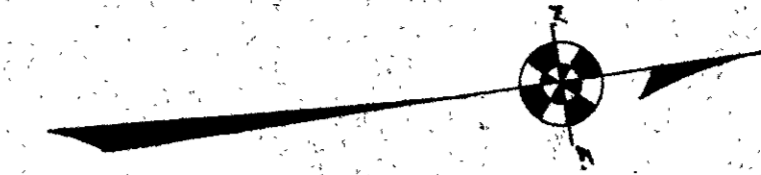


S.R. 292

ROAD 19

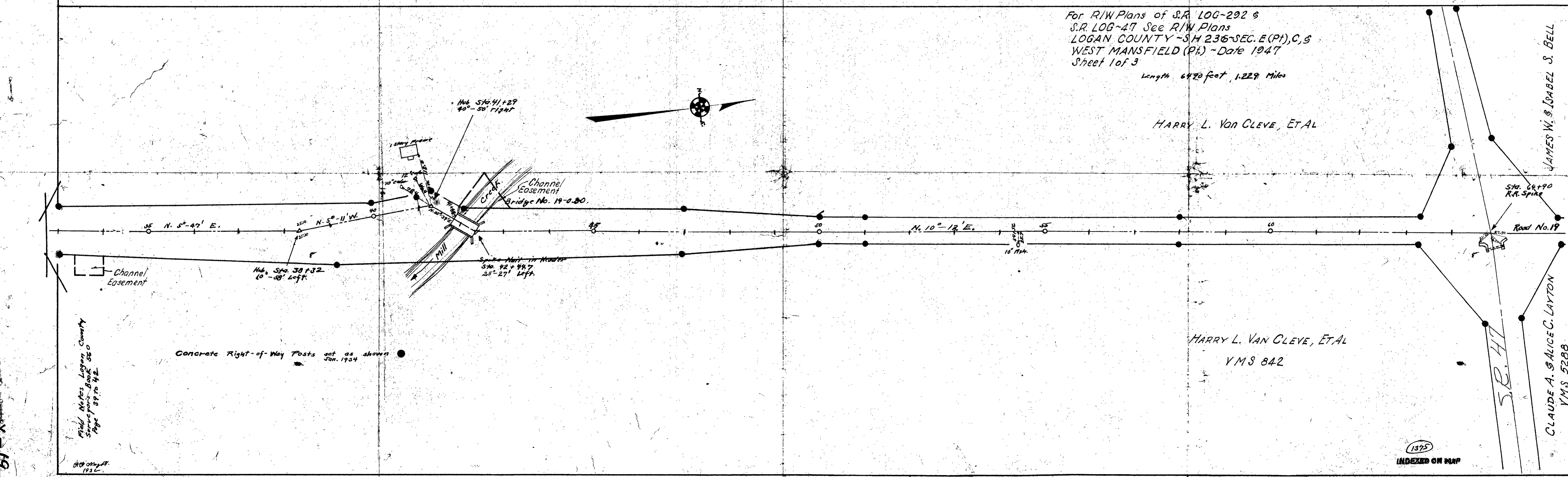


FOR R/W Sta. 29+20 to  
 Sta. 31+00  
 See R/W Plans - LOGAN COUNTY  
 LOG-292 - (5.19 - 12.84) Structures  
 Dated 1958 - Sheet 1 of 3.

Note: - Commissioners Journal No. 5  
 Was lost for several years,  
 Was found in Feb. 1945.  
 Note this road survey was made  
 before Vol. 5 was recovered.

For R/W Plans of S.R. LOG-292 &  
 S.R. LOG-47 See R/W Plans  
 LOGAN COUNTY - SH 236-SEC. E (Pt), C, S  
 WEST MANSFIELD (Pt) - Date 1947  
 Sheet 1 of 3  
 Length 6470 feet, 1.229 Miles

HARRY L. VAN CLEVE, ET AL



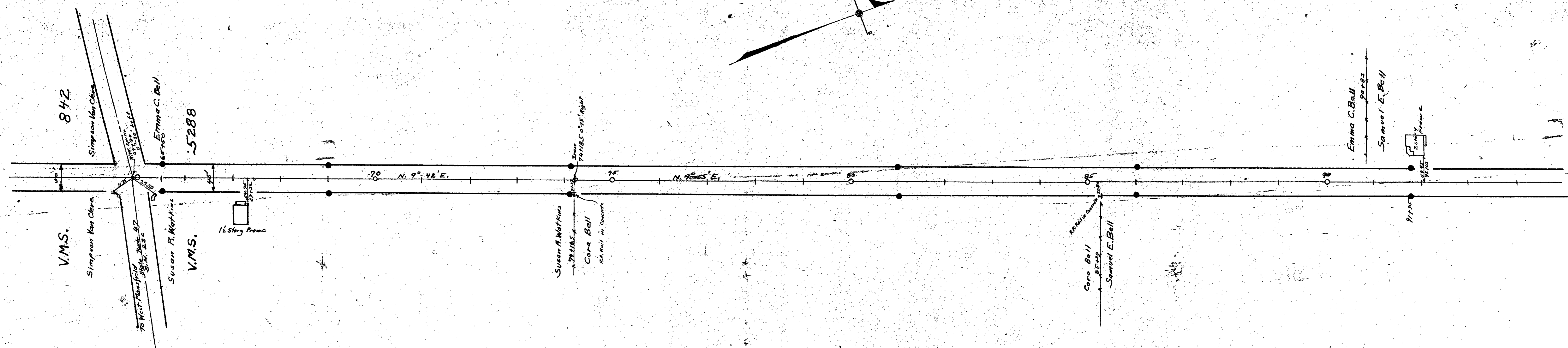
HARRY L. VAN CLEVE, ET AL  
 YMS 842

Field Notes Logan County  
 Surveyors Book 520  
 Page 39 to 42

Concrete Right-of-Way Posts set as shown  
 Jan. 1934

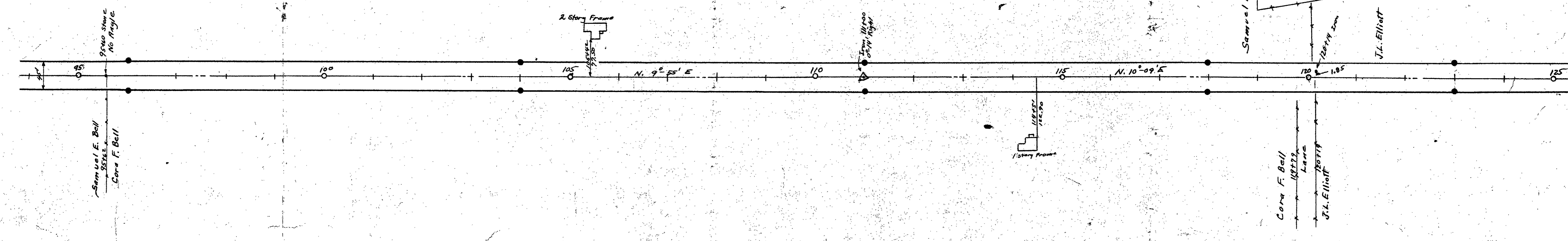
JAMES W. & ISABEL S. BELL

CLAUDE A. SAUCEG. LAYTON  
 YMS 5288

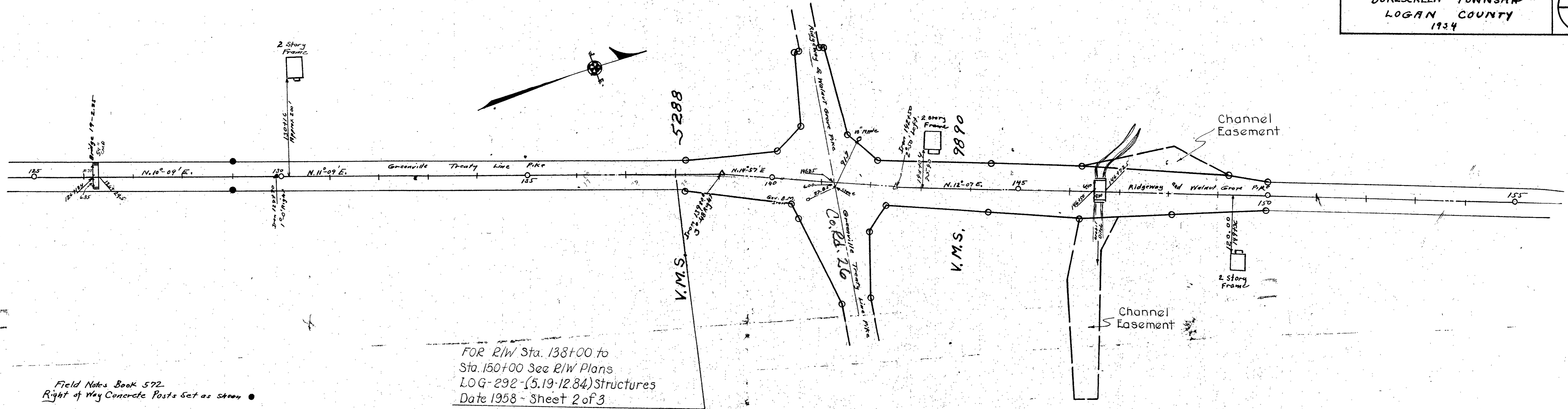


45' PIKE - Sta. 84+90 to 141+25  
Greenville Treaty Lane Pike - Free Turn Pike  
Record No. 9 Page 7, Book H Page 116  
60' Commissioners Journal Vol. 5 Page 161 (1837)

Field Notes Book 572  
Right of Way Concrete Posts Set as Shown



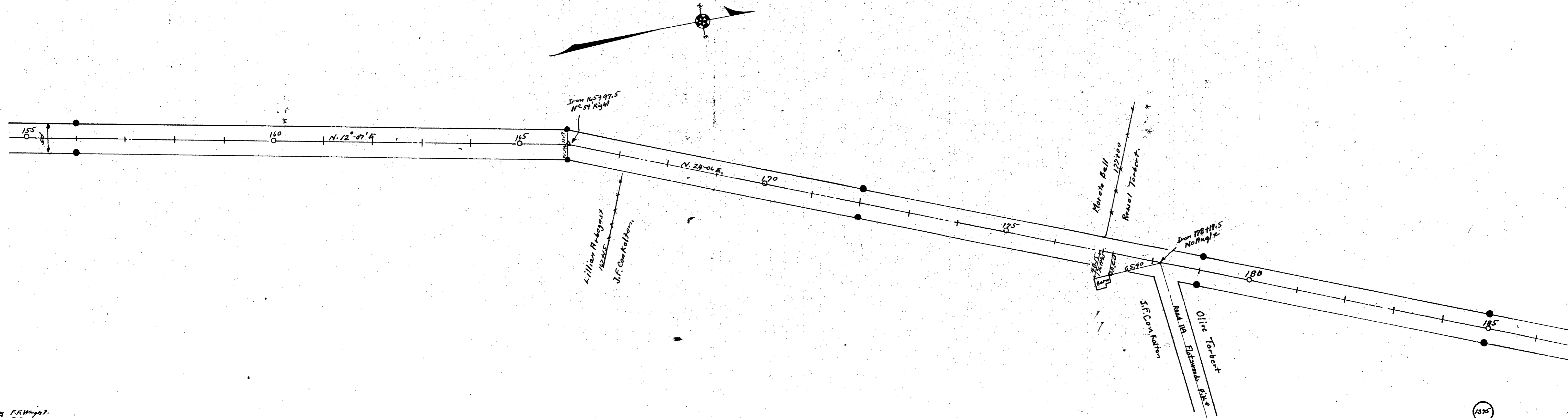
Surveyed By G. W. Wright  
Drawn By G. W. Wright



Field Notes Book 572  
 Right of Way Concrete Posts Set as shown

50' Pike Sta. 141+25 To Sta. 423+79  
 Ridgeway and Walnut Grove Pike - Pike Book  
 N Page 76 (1896)

60' Commissioners Journal Vol. 5 Page 161 (1837)



Surveyed by F.R. Wright  
 Drawn by F.R. Wright

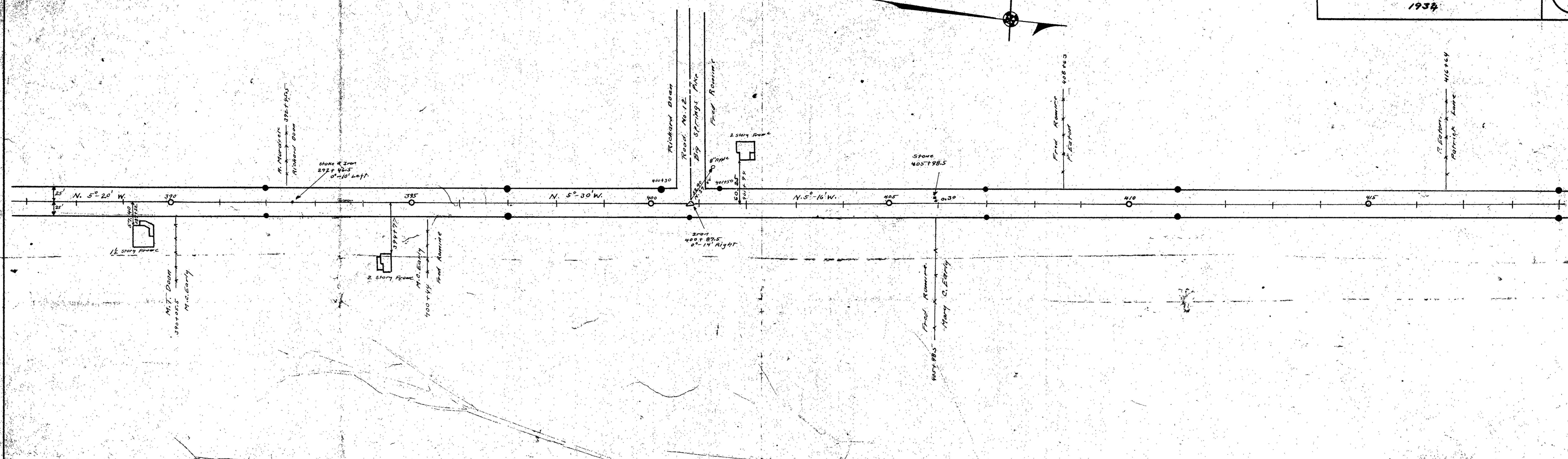
1375

INDEXED ON MAP





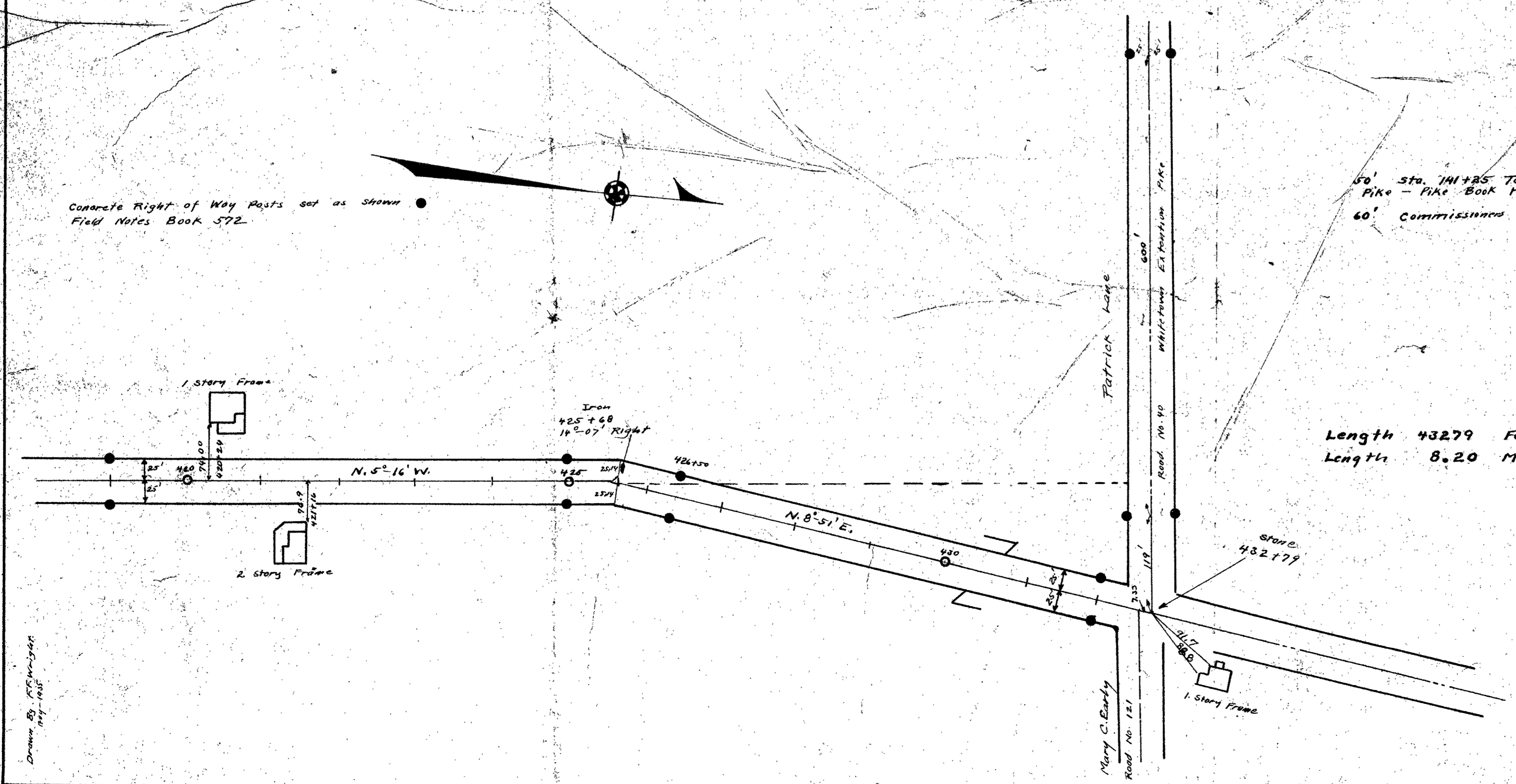




Concrete Right of Way Posts set as shown  
 Field Notes Book 572

50' sta. 741+85 to 432+79 Pidgeony 2nd Walnut Grove  
 Pike - Pike Book H Page 76 (1876)  
 60' Commissioned Journal Vol. 5 Page 161 (1837)

Length 43279 Feet.  
 Length 8.20 Miles.



Drawn by J.P. McLaughlin  
 July 1934