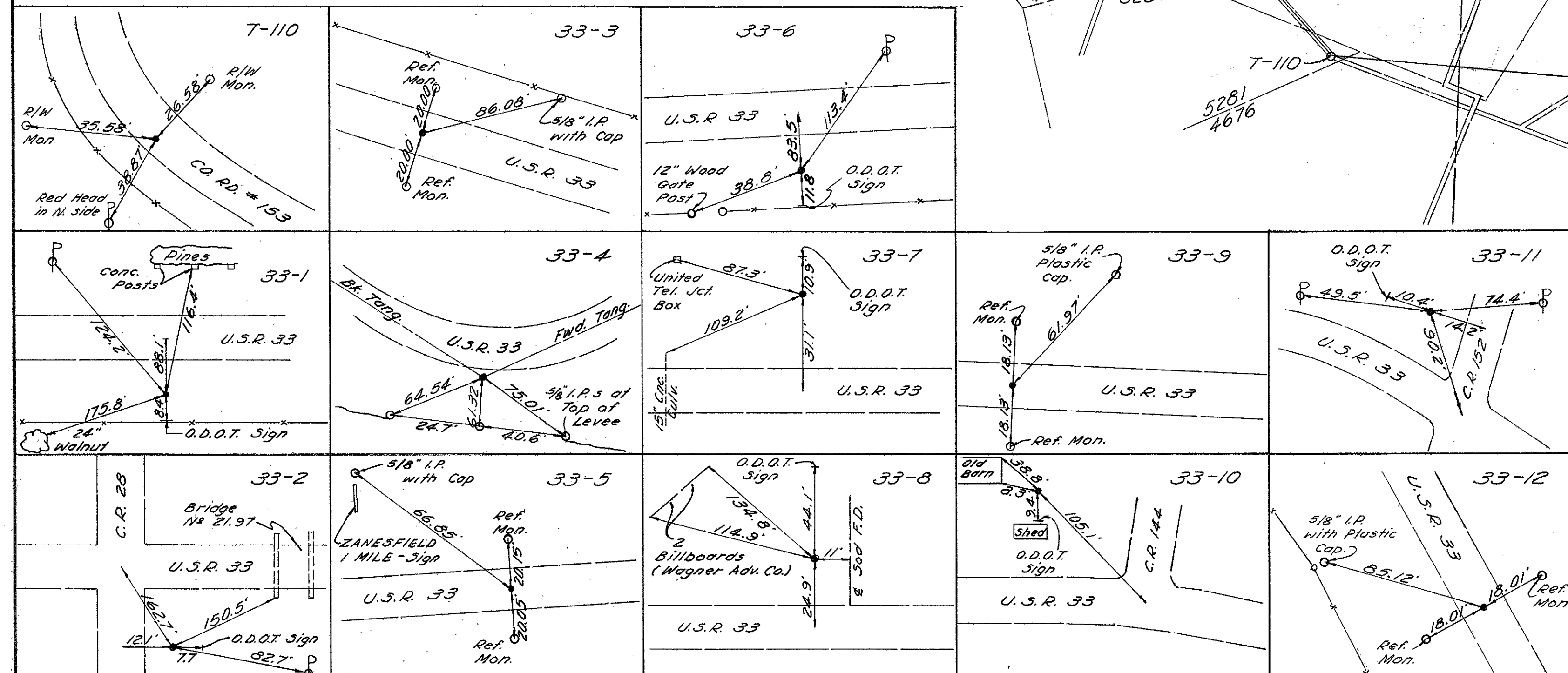
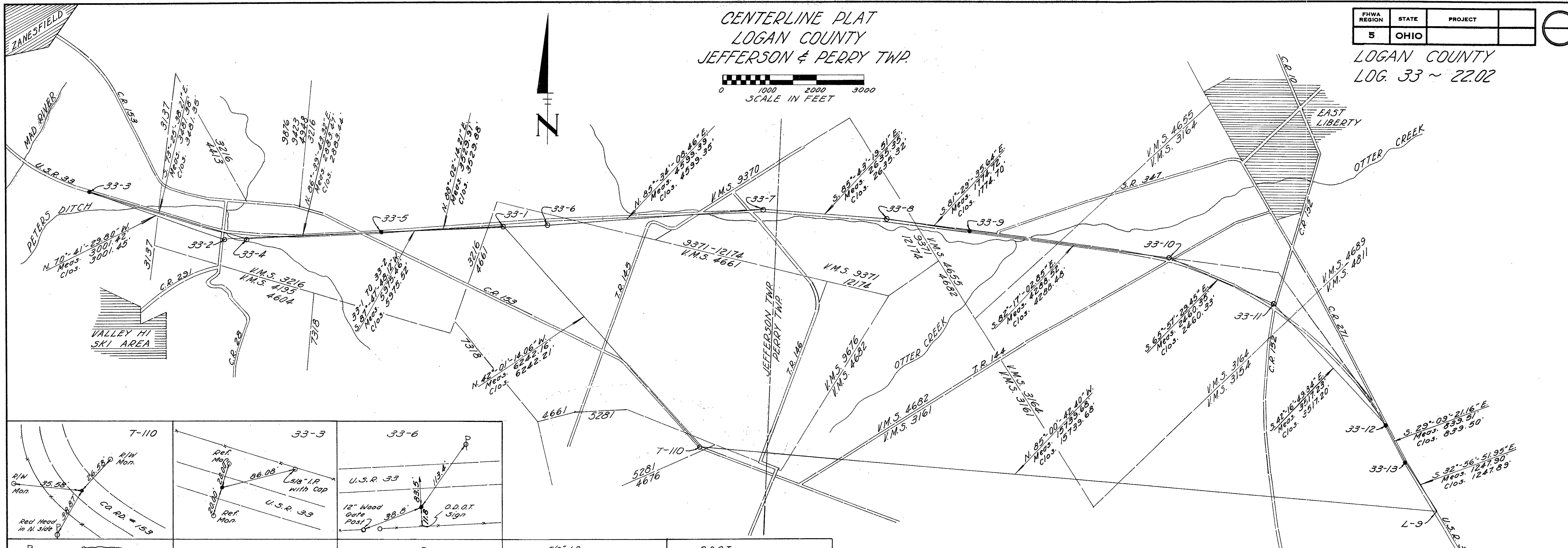
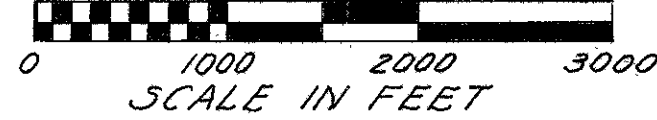


CENTERLINE PLAT
LOGAN COUNTY
JEFFERSON & PERRY TWP.

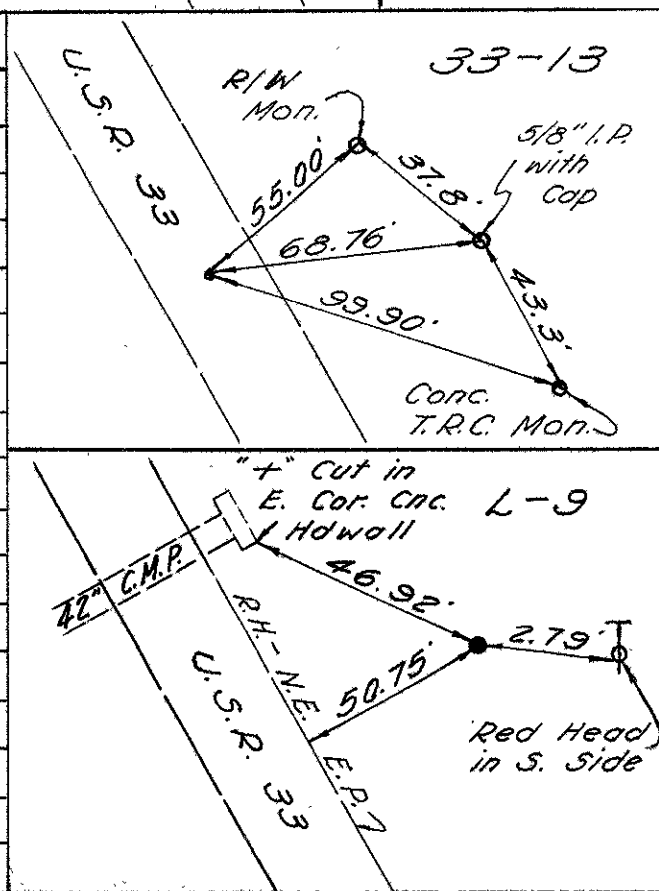
FHWA REGION	STATE	PROJECT
5	OHIO	

LOGAN COUNTY
LOG. 33 ~ 22.02



CLOSED TRAVERSE ~ COORDINATE TABLE

V.M.S. ORDER	E. COORDINATE	N. COORDINATE	LONGITUDE	LATITUDE	REF. MON.	REMARKS
3281 1st	1685752.598	237514.392			T-110	4" I.P. Set in Ctr. of S.B. Lane C.R. 153
4661 2nd	1681573.954	242151.895	83°-38'-31.1773"	40°-19'-32.18903"	33-1	5/8" I.P. with Yellow Plastic O.D.O.T. Cap.
3216 2nd	1675602.679	241922.157	83°-39'-48.22357"	40°-19'-29.13940"	33-2	5/8" I.P. with Yellow Plastic O.D.O.T. Cap.
3137 2nd	1672169.969	242914.624	83°-40'-24.96368"	40°-19'-38.57025"	33-3	R.R. Spike
3216 2nd	1676106.793	241921.603	83°-39'-41.71600"	40°-19'-29.19983"	33-4	5/8" I.P. with Yellow Plastic O.D.O.T. Cap.
3216 2nd	1678985.429	242089.498	83°-39'-04.58313"	40°-19'-39.23596"	33-5	R.R. Spike
4661 2nd	1682513.338	242210.397	83°-38'-19.06036"	40°-19'-32.88849"	33-6	5/8" I.P. with Yellow Plastic O.D.O.T. Cap.
9371 2nd	1687099.074	242565.745	83°-37'-19.91913"	40°-19'-36.98730"	33-7	5/8" I.P. with Yellow Plastic O.D.O.T. Cap.
9371 2nd	1683927.134	242369.159	83°-36'-45.95947"	40°-19'-35.37689"	33-8	5/8" I.P. with Yellow Plastic O.D.O.T. Cap.
4655 2nd	1691482.363	242106.626	83°-36'-23.25714"	40°-19'-33.00385"	33-9	R.R. Spike
3164 2nd	1695732.139	241550.835	83°-35'-28.30078"	40°-19'-27.84393"	33-10	5/8" I.P. with Yellow Plastic O.D.O.T. Cap.
3164 2nd	1697979.094	240528.461	83°-34'-59.13391"	40°-19'-18.21625"	33-11	5/8" I.P. with Yellow Plastic O.D.O.T. Cap.
3154 2nd	1700345.398	237926.148	83°-34'-28.17352"	40°-18'-52.79205"	33-12	R.R. Spike
3154 2nd	1700754.406	237192.989	83°-34'-22.77832"	40°-18'-45.59692"	33-13	R.R. Spike
3154 1st	1701433.122	236145.770			L-9	5/8" Rebar with Lead Cap.



Based on Ohio State Plane Coordinates ~ North Zone.
Conversion Factor ~ 1.000029463.
All Bearings are Grid Bearings.
All Measurements Ground Distances.

RECORDED	I Hereby Certify That This Plat is a True
LOGAN CO.	Delineation of a Survey Made by The Ohio
Date: _____	Department of Transportation in 1979.
Vol: _____	Richard R. Helmlinger
Page: _____	Richard R. Helmlinger ~ Reg. Surveyor # 5421