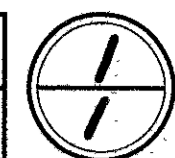
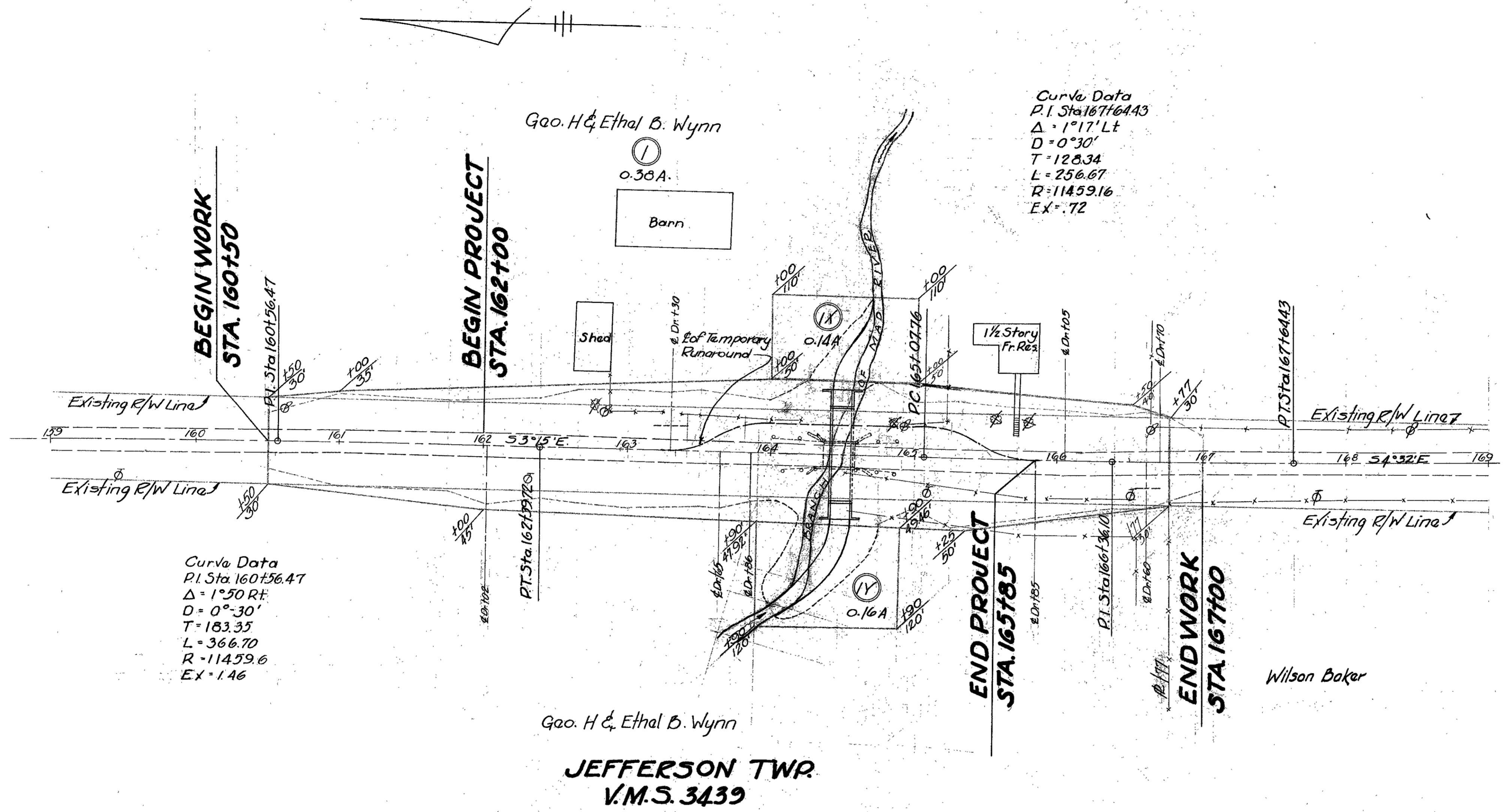


FED. RD. DIVISION	STATE	PROJECT	FISCAL YEAR
2	OHIO	H.I.F.	1948



LOGAN COUNTY
 LOG-33 ~ 22.52
 BRIDGE N=L033-228
 R/W PLAN

JEFFERSON TWP.
 V.M.S. 3439



JEFFERSON TWP.
 V.M.S. 3439