

S.H. NO. 621

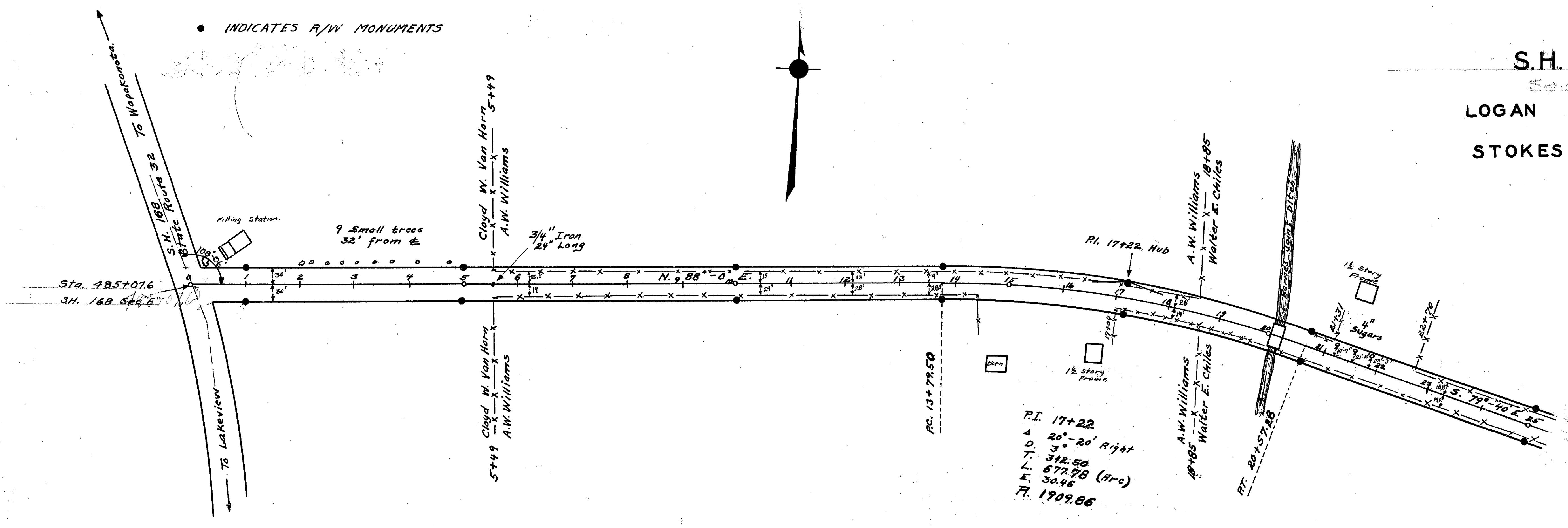
Sec A

LOGAN COUNTY

STOKES TOWNSHIP

(21)

● INDICATES R/W MONUMENTS



P.I. 17+22  
 Δ 20°-20' Right  
 D. 3'  
 T. 342.50  
 L. 677.98 (Arc)  
 E. 30.46  
 R. 1909.86



Field Notes in Logan County Surveyor's Book No. 520

