

FED. RD. DIVISION	STATE	PROJECT	TYPE FUNDS
2	OHIO	S-1047(B) S-1047(E)	1 1

**LOGAN COUNTY
LOG. 47 (3.56) (7.83)
LOCATION PLAN**

Recorded State Highway Plat
Vol. 1 Page 4
11-26-51

PLEASANT TOWNSHIP
Sec. 15, T.2, R.14

PLEASANT TOWNSHIP
Sec. 12, T.1N, R.8E

PLEASANT TOWNSHIP
Sec. 15, T.2, R.14

Curve Data
P.I. Sta. 199+94.80
 $\Delta = 0^\circ 24' 41''$
 $D = 0^\circ 06'$
 $L = 400'$
 $T = 200'$
 $E = 0.35'$
Mid Pt. Sta. 199+94.80

**LOCATION PLAN
STATE ROUTE 47
LOG. 47(3.56) LOGAN COUNTY
PLEASANT TOWNSHIP**

1951
SCALE: 1"=100'

APPROVED 11-8-51
D.W. ~~Smith~~ DIVISION & DESIGN ENGINEER
REG. PROFESSIONAL ENGINEER NO. 1336

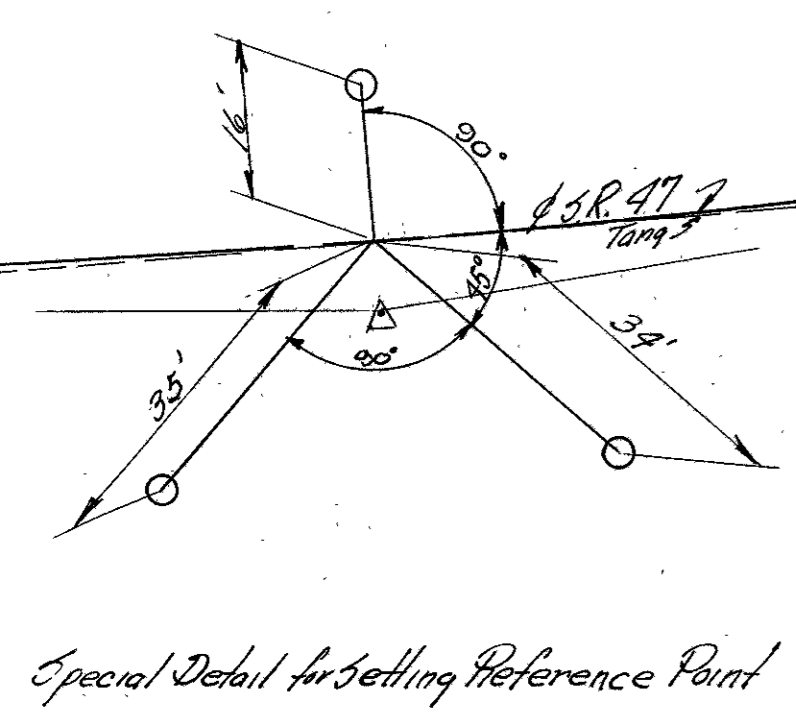
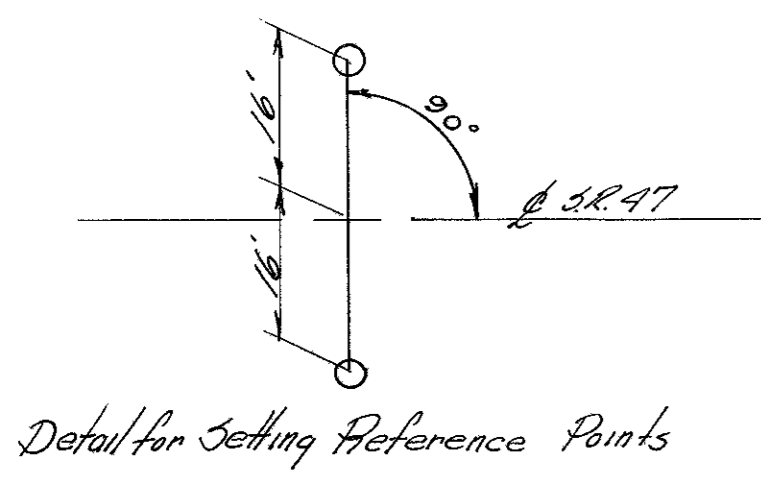
REFERENCE POINTS TO BE SET AFTER CONSTRUCTION

Station	Distance from &	
	Lt.	Rt.
185+00	16'	16'
189+03.27	16'	16'
191+59.65	See Special Detail	
194+16.04	16'	16'
197+94.00	16'	16'
199+94.80	16'	16'
201+94.80	16'	16'
205+00	16'	16'

Set as per plan 1953

Curve Data
P.I. Sta. 191+60.07
 $\Delta = 9^\circ 23' 41''$
 $D_c = 3^\circ 00'$
 $T_s = 256.0'$
 $E_s = 7.33'$
 $O_s = 3^\circ 00'$
 $\Delta_c = 3^\circ 23'$
 $L_c = 112.77'$
 $x_c = 199.95'$
 $y_c = 3.49'$
 $L_s = 200.0'$
Mid Pt. Sta. 191+59.65

PLEASANT TOWNSHIP
Sec. 12, T.1N, R.8E



HARRISON TOWNSHIP
Sec. 29, T.3, R.14 M.R.S.

HARRISON TOWNSHIP
Sec. 28, T.3, R.14 M.R.S.

HARRISON TOWNSHIP
Sec. 29, T.3, R.14 M.R.S.

Curve Data
P.I. Sta. 424+53.72
 $\Delta = 33^\circ 48' 54''$
 $D_c = 4^\circ 0'$
 $L_s = 350.0'$
 $O_s = 7^\circ 0'$
 $\Delta_c = 19^\circ 48' 54''$
 $L_c = 495.30'$
 $T_s = 611.40'$
 $E_s = 68.46'$
 $p = 3.56'$
 $k = 174.91'$
 $x_c = 349.48'$
 $y_c = 14.24'$
 $L_T = 233.52'$
 $S.T. = 116.83'$
 $L_c = 349.71'$
Mid Pt. Sta. 424+42.01

REFERENCE POINTS TO BE SET AFTER CONSTRUCTION

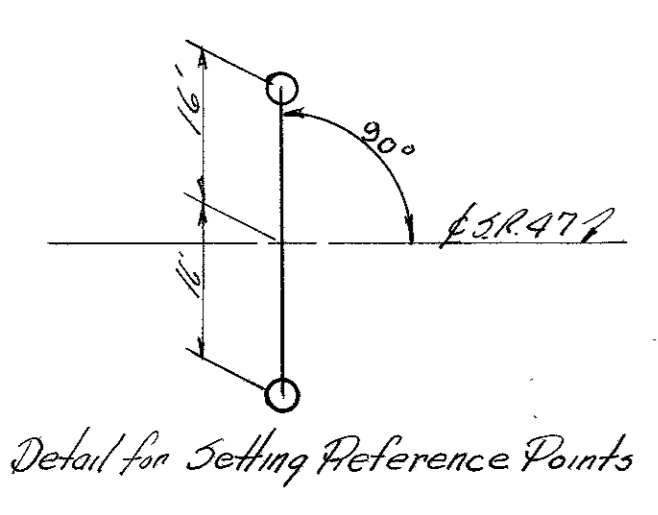
Station	Distance from &	
	Lt.	Rt.
415+00	16'	16' ✓
418+44.32	16'	16' ✓
424+42.01	16'	16' ✓
430+39.70	16'	16' ✓
435+00	16'	16' ✓
440+00	16'	16' ✓
441		

* Not set
Set as noted.

**LOCATION PLAN
STATE ROUTE 47
LOG. 47 (7.86) LOGAN COUNTY
HARRISON TOWNSHIP**

1951
SCALE: 1"=100'

APPROVED 11-8-51
D.W. ~~Smith~~ DIVISION & DESIGN ENGINEER
REG. PROFESSIONAL ENGINEER NO. 1336



FED. RD. DIVISION	STATE	PROJECT	TYPE FUNDS
2	OHIO	S-1047(B) S-1047(E)	1 1

**LOGAN COUNTY
LOG. 47 (3.56) (7.83)
LOCATION PLAN**

Recorded State Highway Plat
Vol. 1 Page 4
11-26-51

PLEASANT TOWNSHIP
Sec. 15, T.2, R.14

PLEASANT TOWNSHIP
Sec. 12, T.1N, R.8E

PLEASANT TOWNSHIP
Sec. 15, T.2, R.14

Curve Data
P.I. Sta. 199+94.80
 $\Delta = 0^\circ 24' 41''$
 $D = 0^\circ 06'$
 $L = 400'$
 $T = 200'$
 $E = 0.35'$
Mid Pt. Sta. 199+94.80

**LOCATION PLAN
STATE ROUTE 47
LOG. 47(3.56) LOGAN COUNTY
PLEASANT TOWNSHIP**

1951
SCALE: 1"=100'

APPROVED 11-8-51
D.W. ~~Smith~~ DIVISION & DESIGN ENGINEER
REG. PROFESSIONAL ENGINEER NO. 1336

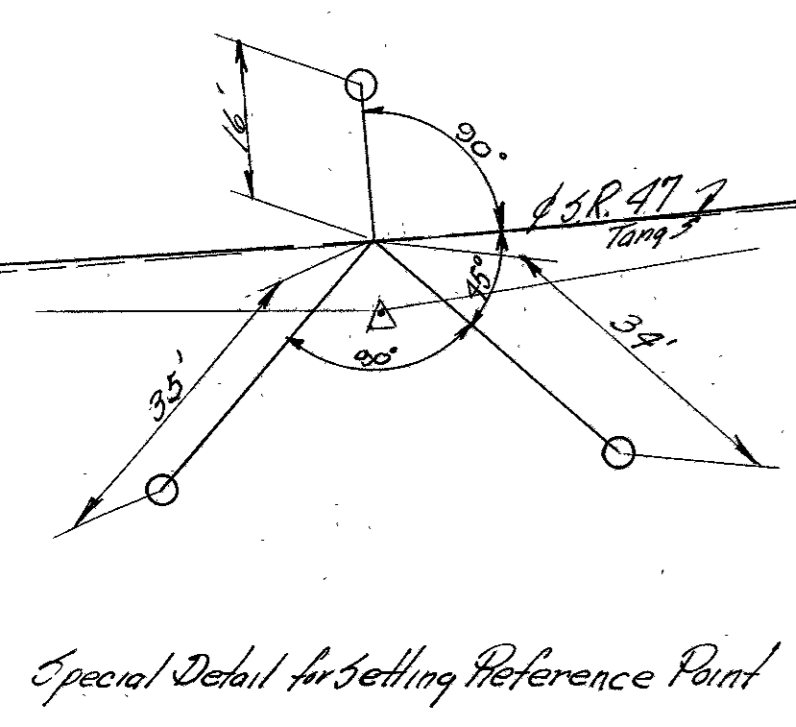
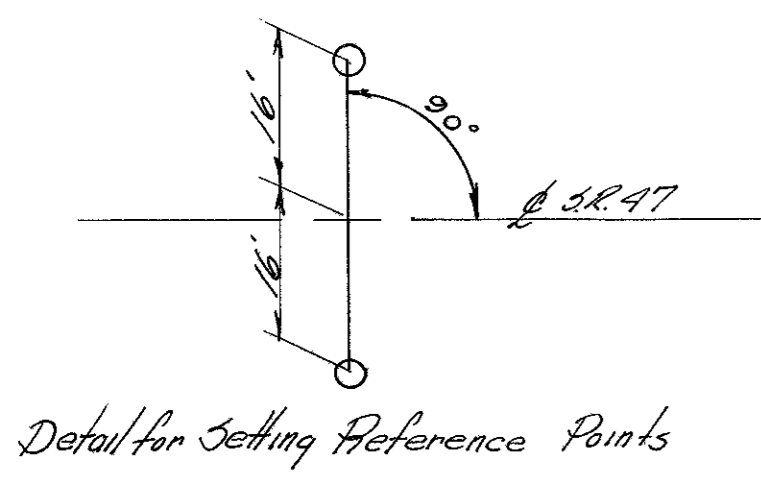
REFERENCE POINTS TO BE SET AFTER CONSTRUCTION

Station	Distance from &	
	Lt.	Rt.
185+00	16'	16'
189+03.27	16'	16'
191+59.65	See Special Detail	
194+16.04	16'	16'
197+94.00	16'	16'
199+94.80	16'	16'
201+94.80	16'	16'
205+00	16'	16'

Set as per plan 1953

Curve Data
P.I. Sta. 191+60.07
 $\Delta = 9^\circ 23' 41''$
 $D_c = 3^\circ 00'$
 $T_s = 256.0'$
 $E_s = 7.33'$
 $O_s = 3^\circ 00'$
 $\Delta_c = 3^\circ 23'$
 $L_c = 112.77'$
 $x_c = 199.95'$
 $y_c = 3.49'$
 $L_s = 200.0'$
Mid Pt. Sta. 191+59.65

PLEASANT TOWNSHIP
Sec. 12, T.1N, R.8E



HARRISON TOWNSHIP
Sec. 29, T.3, R.14 M.R.S.

HARRISON TOWNSHIP
Sec. 28, T.3, R.14 M.R.S.

HARRISON TOWNSHIP
Sec. 29, T.3, R.14 M.R.S.

**LOCATION PLAN
STATE ROUTE 47
LOG. 47 (7.86) LOGAN COUNTY
HARRISON TOWNSHIP**

1951
SCALE: 1"=100'

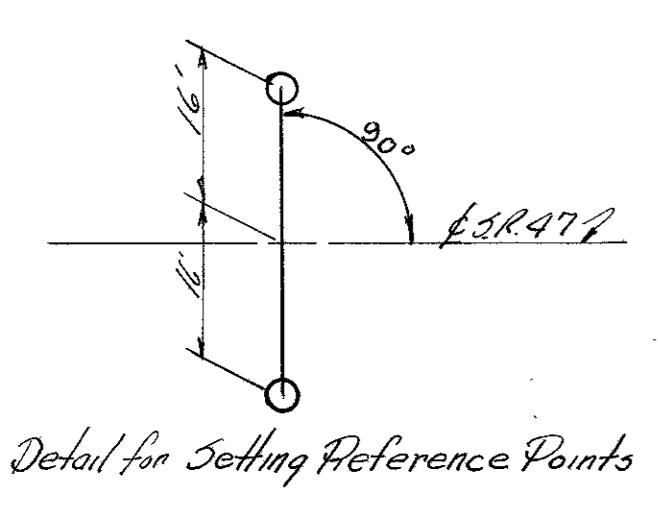
APPROVED 11-8-51
D.W. ~~Smith~~ DIVISION & DESIGN ENGINEER
REG. PROFESSIONAL ENGINEER NO. 1336

REFERENCE POINTS TO BE SET AFTER CONSTRUCTION

Station	Distance from &	
	Lt.	Rt.
415+00	16'	16' ✓
418+44.32	16'	16' ✓
424+42.01	16'	16' ✓
430+39.70	16'	16' ✓
435+00	16'	16' ✓
440+00	16'	16' ✓
441		

* Not set
Set as noted.

Curve Data
P.I. Sta. 424+53.72
 $\Delta = 33^\circ 48' 54''$
 $D_c = 4^\circ 0'$
 $L_s = 350.0'$
 $O_s = 7^\circ 0'$
 $\Delta_c = 19^\circ 48' 54''$
 $L_c = 495.30'$
 $T_s = 611.40'$
 $p = 3.56'$
 $k = 174.91'$
 $x_c = 349.48'$
 $y_c = 14.24'$
 $L_T = 233.52'$
 $S.T. = 116.83'$
 $L_c = 349.71'$
Mid Pt. Sta. 424+42.01



FED. RD. DIVISION	STATE	PROJECT	TYPE FUNDS
2	OHIO	S-1047(B) S-1047(E)	1 1

**LOGAN COUNTY
LOG. 47 (3.56) (7.83)
LOCATION PLAN**

Recorded State Highway Plat
Vol. 1 Page 4
11-26-51

PLEASANT TOWNSHIP
Sec. 15, T.2, R.14

PLEASANT TOWNSHIP
Sec. 12, T.1N, R.8E

PLEASANT TOWNSHIP
Sec. 15, T.2, R.14

Curve Data
P.I. Sta. 199+94.80
 $\Delta = 0^{\circ}24'41''$
 $D = 0^{\circ}06'$
 $L = 400'$
 $T = 200'$
 $E = 0.35'$
Mid Pt. Sta. 199+94.80

**LOCATION PLAN
STATE ROUTE 47
LOG. 47(3.56) LOGAN COUNTY
PLEASANT TOWNSHIP**

1951
SCALE: 1"=100'

APPROVED 11-8-51
D.W. ~~Smith~~ DIVISION & DESIGN ENGINEER
REG. PROFESSIONAL ENGINEER NO. 1336

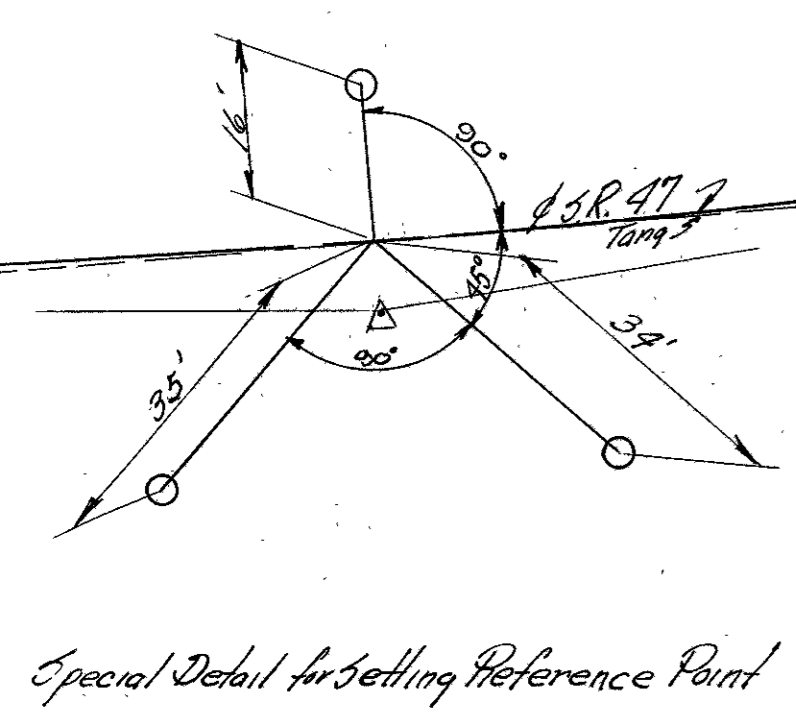
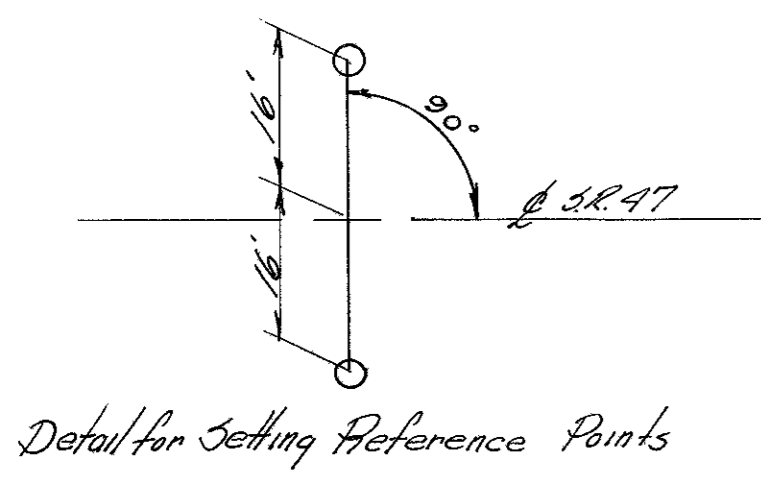
REFERENCE POINTS TO BE SET AFTER CONSTRUCTION

Station	Distance from &	
	Lt.	Rt.
185+00	16'	16'
189+03.27	16'	16'
191+59.65	See Special Detail	
194+16.04	16'	16'
197+94.00	16'	16'
199+94.80	16'	16'
201+94.80	16'	16'
205+00	16'	16'

Set as per plan 1953

Curve Data
P.I. Sta. 191+60.07
 $\Delta = 9^{\circ}23'41''$
 $D_c = 3^{\circ}00'$
 $T_s = 256.0'$
 $E_s = 7.33'$
 $O_s = 3^{\circ}00'$
 $\Delta_c = 3^{\circ}23'$
 $L_c = 112.77'$
 $x_c = 199.95'$
 $y_c = 3.49'$
 $L_s = 200.0'$
Mid Pt. Sta. 191+59.65

PLEASANT TOWNSHIP
Sec. 12, T.1N, R.8E



HARRISON TOWNSHIP
Sec. 29, T.3, R.14 M.R.S.

HARRISON TOWNSHIP
Sec. 28, T.3, R.14 M.R.S.

HARRISON TOWNSHIP
Sec. 29, T.3, R.14 M.R.S.

Curve Data
P.I. Sta. 424+53.72
 $\Delta = 33^{\circ}48'54''$
 $D_c = 4^{\circ}00'$
 $L_s = 350.0'$
 $O_s = 7^{\circ}00'$
 $\Delta_c = 19^{\circ}48'54''$
 $L_c = 495.30'$
 $T_s = 611.40'$
 $E_s = 68.46'$
 $p = 3.56'$
 $k = 174.91'$
 $x_c = 349.48'$
 $y_c = 14.24'$
 $L_T = 233.52'$
 $S.T. = 116.83'$
 $L_c = 349.71'$
Mid Pt. Sta. 424+42.01

REFERENCE POINTS TO BE SET AFTER CONSTRUCTION

Station	Distance from &	
	Lt.	Rt.
415+00	16'	16' ✓
418+44.32	16'	16' ✓
424+42.01	16'	16' ✓
430+39.70	16'	16' ✓
435+00	16'	16' ✓
440+00	16'	16' ✓
441		

* Not set
Set as noted.

**LOCATION PLAN
STATE ROUTE 47
LOG. 47 (7.86) LOGAN COUNTY
HARRISON TOWNSHIP**

1951
SCALE: 1"=100'

APPROVED 11-8-51
D.W. ~~Smith~~ DIVISION & DESIGN ENGINEER
REG. PROFESSIONAL ENGINEER NO. 1336

