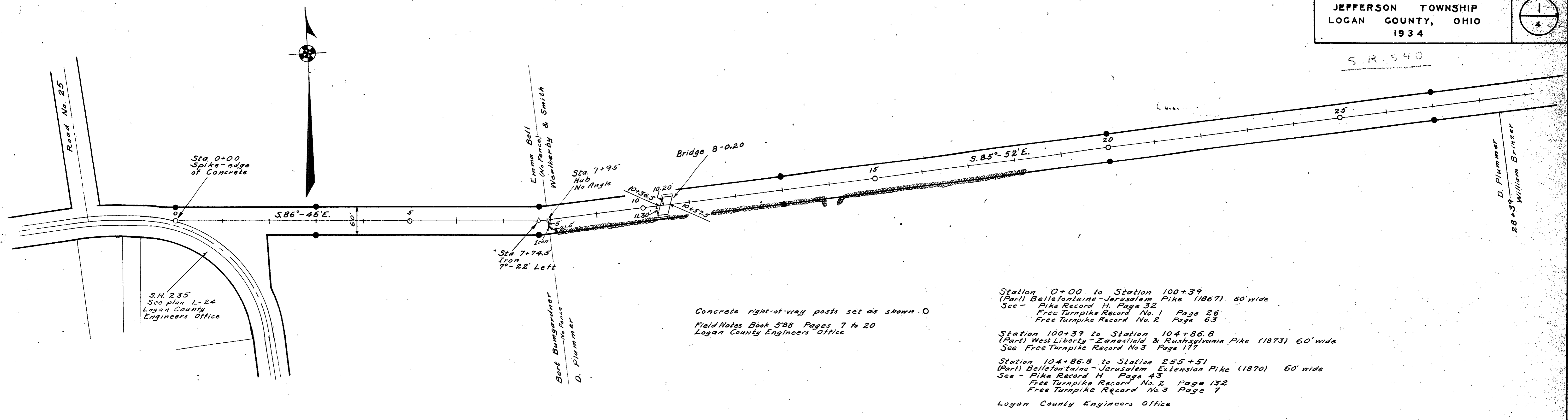


S.R. 540

ROAD 8



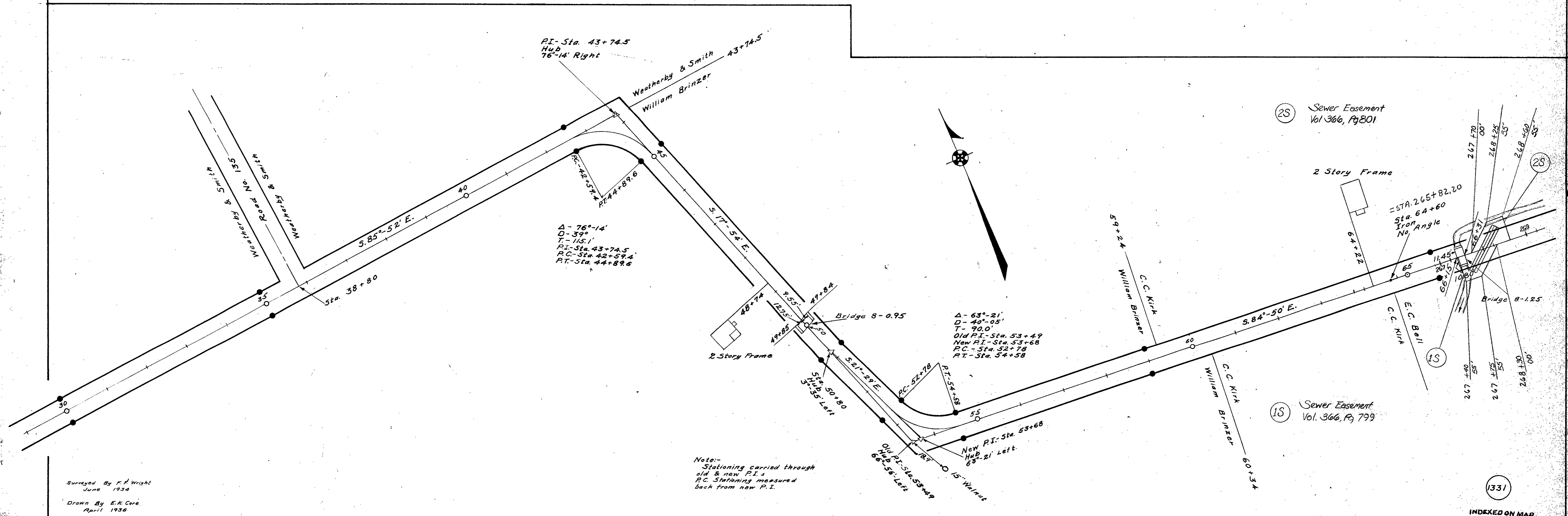
S.H. 235  
See plan L-24  
Logan County  
Engineers Office

Concrete right-of-way posts set as shown O  
Field Notes Book 588 Pages 7 to 20  
Logan County Engineers Office

Station 0+00 to Station 100+39  
(Part) Bellefontaine-Jerusalem Pike (1867) 60' wide  
See - Pike Record H. Page 32  
Free Turnpike Record No. 1 Page 26  
Free Turnpike Record No. 2 Page 63

Station 100+39 to Station 104+86.8  
(Part) West Liberty-Zanesfield & Rushsylvania Pike (1873) 60' wide  
See Free Turnpike Record No. 3 Page 177

Station 104+86.8 to Station 255+51  
(Part) Bellefontaine-Jerusalem Extension Pike (1870) 60' wide  
See - Pike Record H. Page 43  
Free Turnpike Record No. 2 Page 132  
Free Turnpike Record No. 3 Page 7  
Logan County Engineers Office



PI- Sta. 43+74.5  
Hub  
76'-14" Right

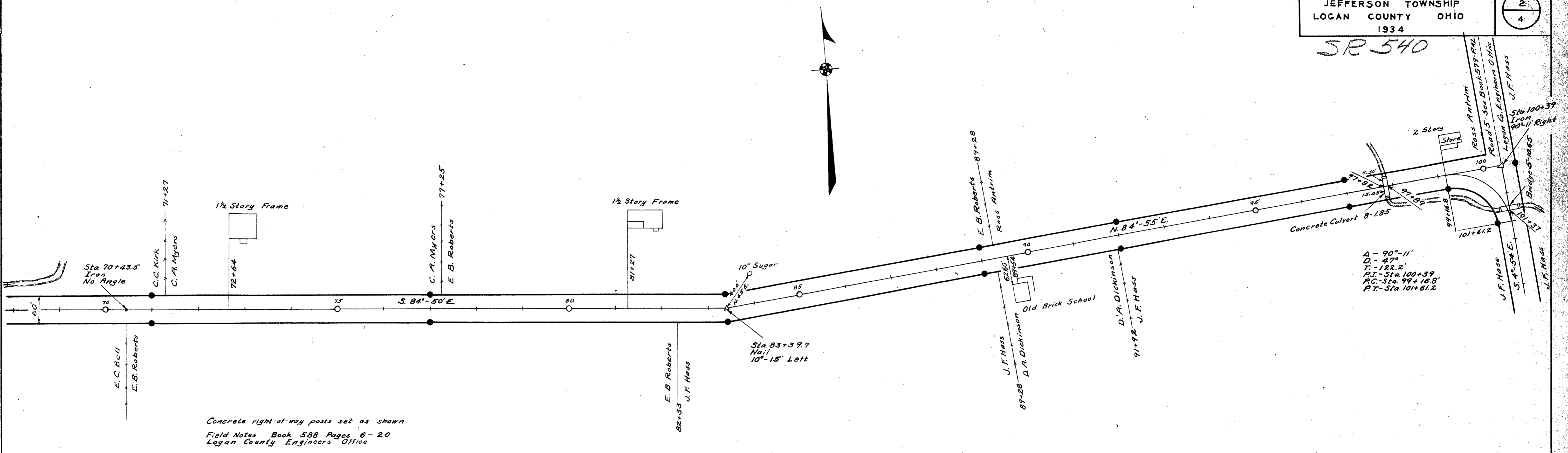
$\Delta = 76^{\circ}-14'$   
 $D = 39'$   
 $T = 115.1'$   
PI- Sta. 43+74.5  
PC- Sta. 42+59.4  
PT- Sta. 44+89.6

$\Delta = 63^{\circ}-21'$   
 $D = 40'-05"$   
 $T = 90.0'$   
Old PI- Sta. 53+49  
New PI- Sta. 53+68  
PC- Sta. 52+78  
PT- Sta. 54+58

Note:-  
Stationing carried through  
old & new P.I.s  
P.C. Stationing measured  
back from new P.I.

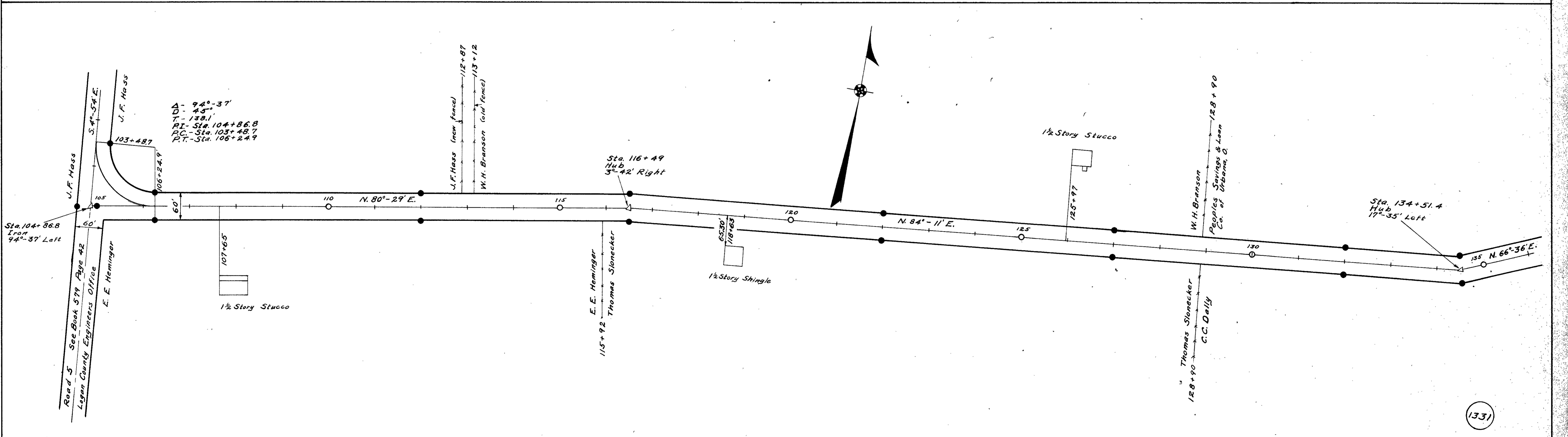
Surveyed By F. R. Wright  
June 1934  
Drawn By E. K. Coré  
April 1936

SR 540



Concrete right-of-way posts set as shown  
Field Notes Book 588 Pages 6-20  
Logan County Engineers Office

A - 90°-11'  
D - 47'  
T - 122.2'  
P.I. - Sta. 100+39  
P.C. - Sta. 99+16.8  
P.T. - Sta. 101+61.2



Surveyed By F.F. Wright  
June 1934  
Drawn By E.K. Carr  
April 1936

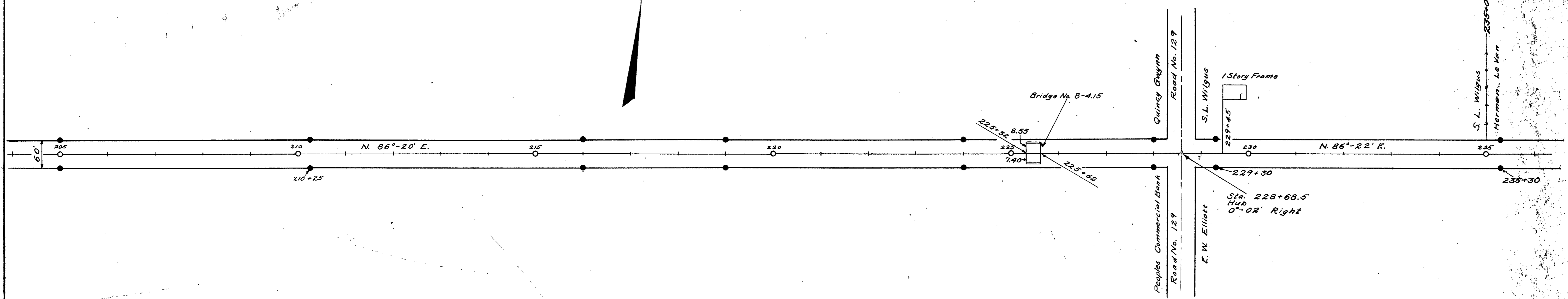
1331

INDEXED ON MAP

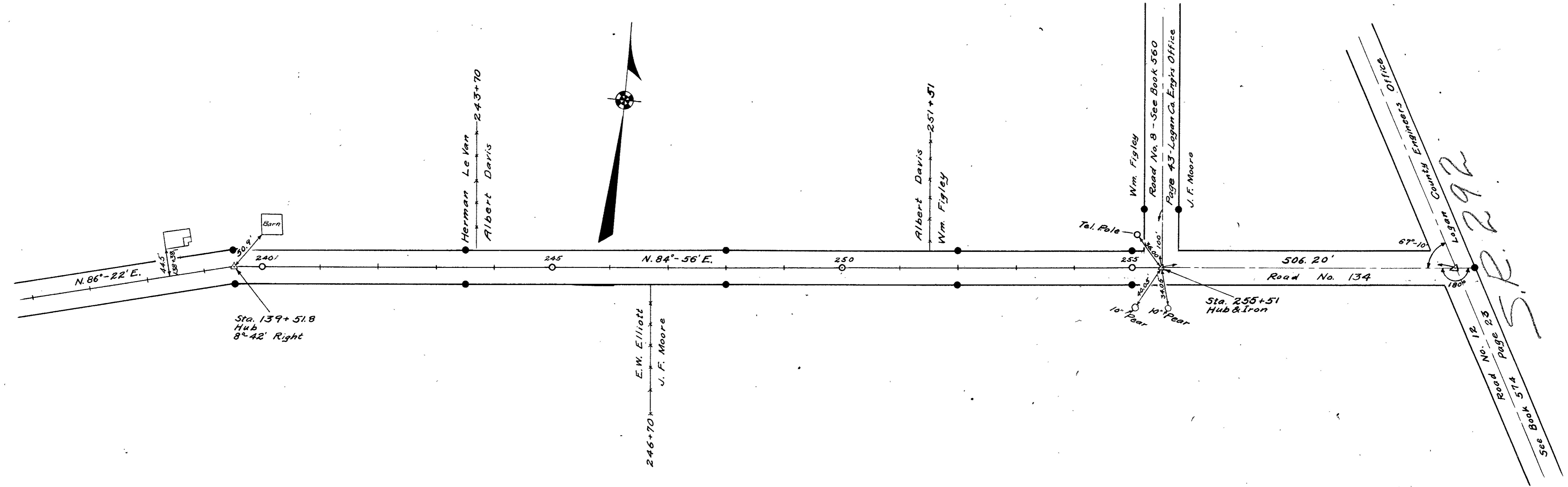




S.R. 540



Concrete right-of-way monuments set as shown ●  
Field Notes Book 588 Pages 6-20  
Logan County Engineers Office



Surveyed By F.F. Wright  
June 1934  
Drawn By E.K. Cora  
April 1936

S.R. 292  
Road No. 12 Page 25  
See Book 574