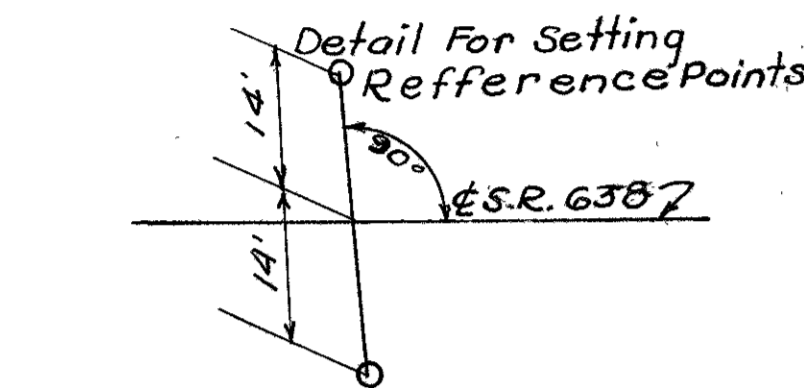
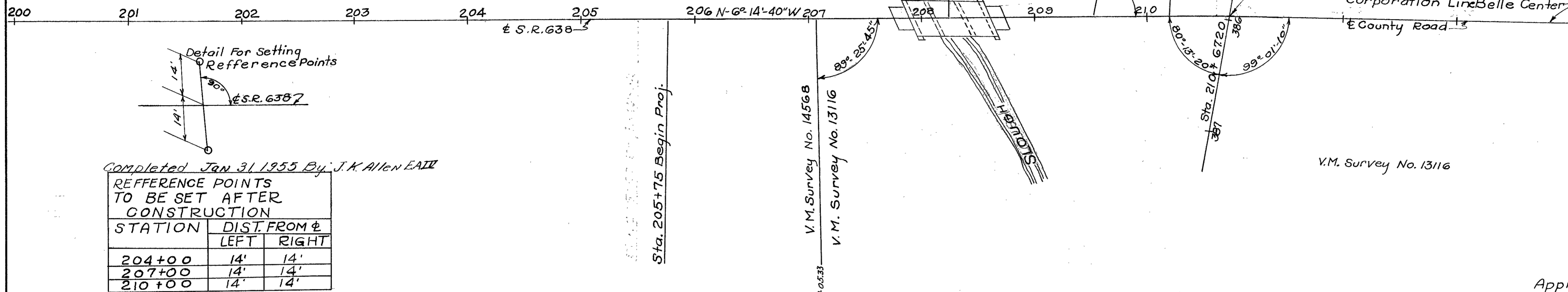


FED. RD. DIVISION	STATE	PROJECT	TYPE FUNDS
2	OHIO		

**LOGAN COUNTY**  
**LOG. 638(390)**  
~~**LOG. 273(737)**~~  
**LOCATION PLANS**  
 1954

**LOCATION PLAN**  
**STATE ROUTE 638 BELLE CENTER SOUTH ROAD**  
**LOG. 638(390) LOGAN COUNTY**  
**RICHLAND TOWNSHIP**

Scale 1" = 50'  
 1954  
 V.M. Survey No. 9972



Completed Jan 31, 1955 By: J.K. Allen E.A.IV

STATION	DIST. FROM &	
	LEFT	RIGHT
204+00	14'	14'
207+00	14'	14'
210+00	14'	14'

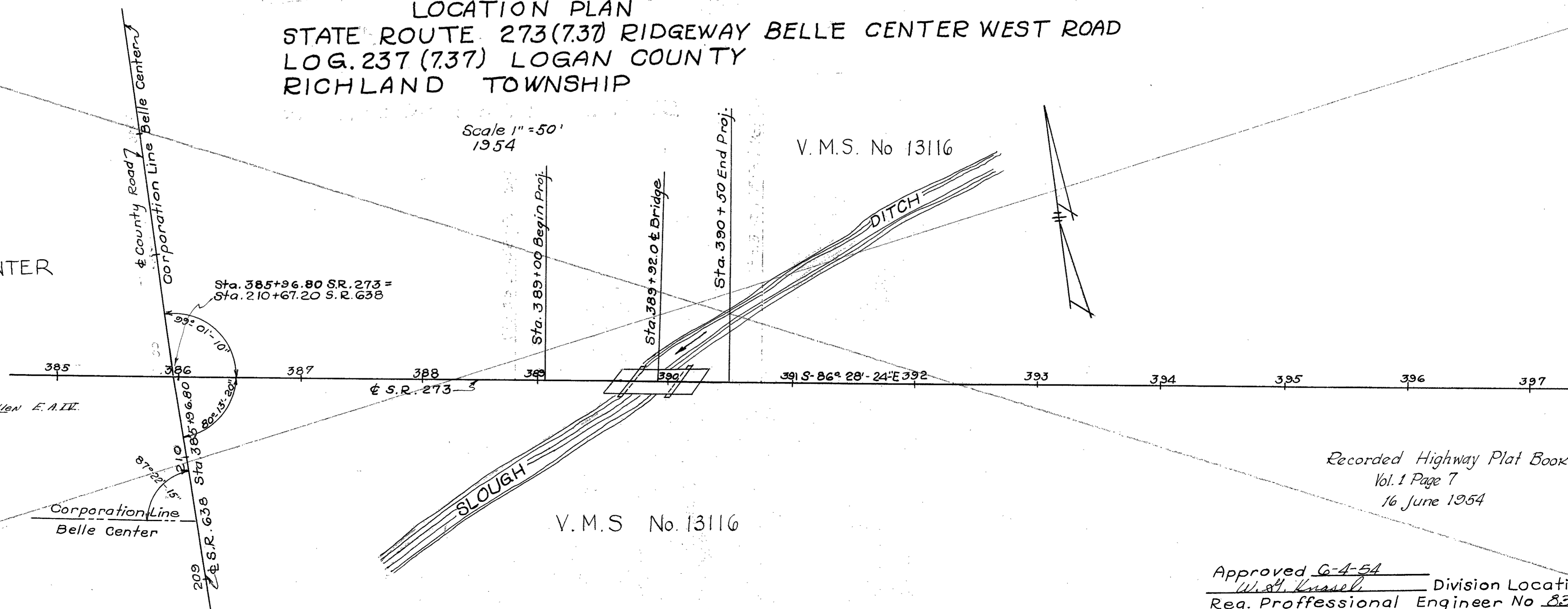
Approved 6-4-54  
 W. St. Kussel Division Location & Design Engr.  
 Reg. Professional Engineer No. 836

**LOCATION PLAN**  
**STATE ROUTE 273(737) RIDGEWAY BELLE CENTER WEST ROAD**  
**LOG. 237(737) LOGAN COUNTY**  
**RICHLAND TOWNSHIP**

Scale 1" = 50'  
 1954

V.M.S. No 13116

BELLE CENTER



Completed Jan 31, 1955 By: Joseph K. Allen E.A.IV

STATION	DIST FROM &	
	LEFT	RIGHT
387+00	14'	14'
391+00	14'	14'
395+00	14'	14'

Recorded Highway Plat Book  
 Vol. 1 Page 7  
 16 June 1954

Approved 6-4-54  
 W. St. Kussel Division Location & Design Engr.  
 Reg. Professional Engineer No. 836

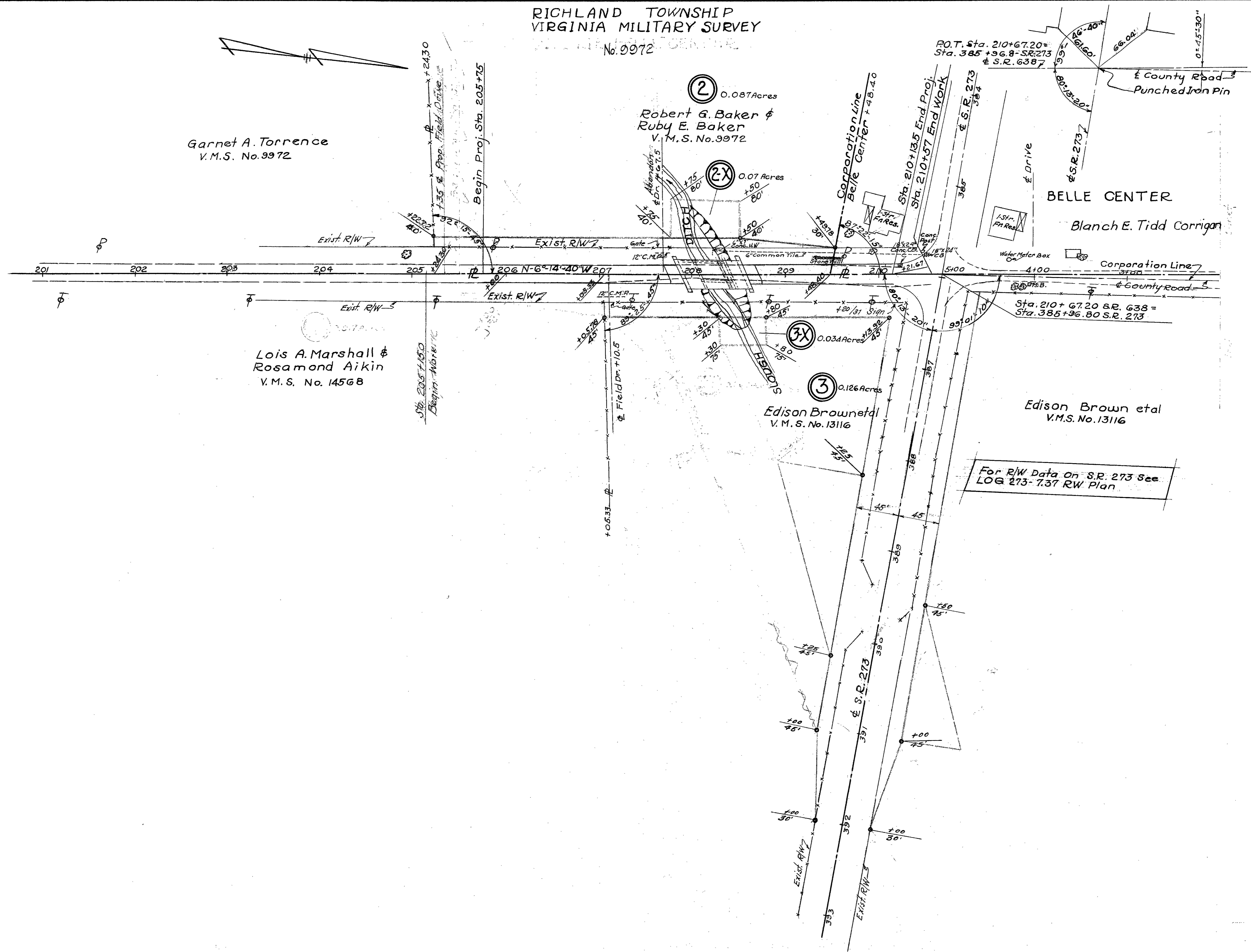
RICHLAND TOWNSHIP  
VIRGINIA MILITARY SURVEY

No. 9972

FED. RD. DIVISION	STATE	PROJECT	TYPE FUNDS
2	OHIO		

29  
29

LOGAN COUNTY  
LOG. 638 ~ 3.90  
R/W. PLAN  
1954



Garnet A. Torrence  
V.M.S. No. 9972

Lois A. Marshall &  
Rosamond Aikin  
V.M.S. No. 14568

② 0.087 Acres  
Robert G. Baker &  
Ruby E. Baker  
V.M.S. No. 9972

②X 0.07 Acres

③ 0.126 Acres  
Edison Brown et al  
V.M.S. No. 13116

③X 0.034 Acres  
Edison Brown et al  
V.M.S. No. 13116

BELLE CENTER

Blanch E. Tidd Corrigan

For R/W Data on S.R. 273 See  
LOG 273-737 RW Plan

FED. RD. DIVISION	STATE	PROJECT	TYPE FUNDS
2	OHIO		

**LOGAN COUNTY**  
**LOG. 638(390)**  
**LOG. 273 (737)**  
**LOCATION PLANS**

1954

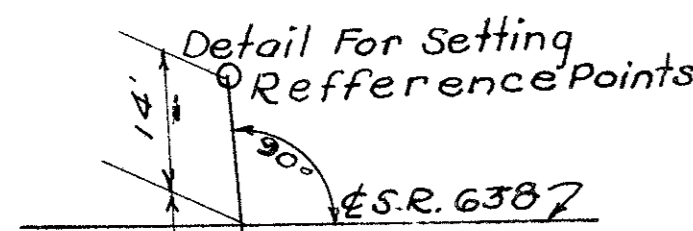
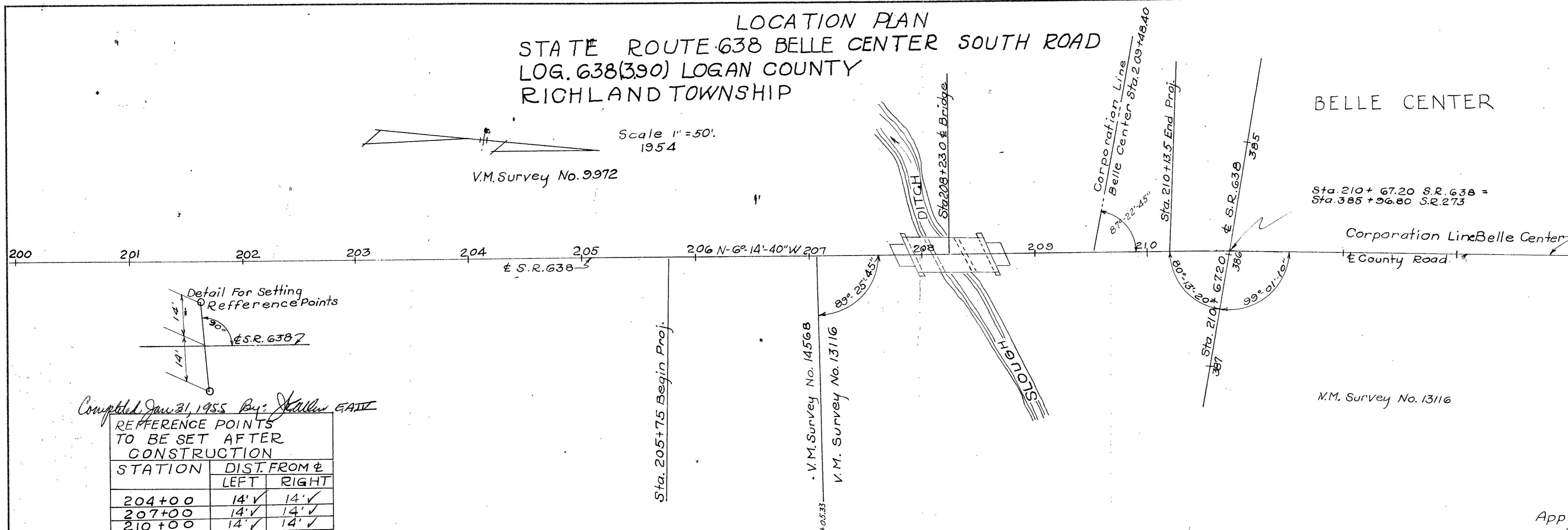
NOV 22 1954

**LOCATION PLAN**  
**STATE ROUTE 638 BELLE CENTER SOUTH ROAD**  
**LOG. 638(390) LOGAN COUNTY**  
**RICHLAND TOWNSHIP**



Scale 1" = 50'  
 1954

V.M. Survey No. 9972



Completed Jan 31, 1955 By: *William E. AIV*

STATION	DIST. FROM &	
	LEFT	RIGHT
204+00	14' ✓	14' ✓
207+00	14' ✓	14' ✓
210+00	14' ✓	14' ✓

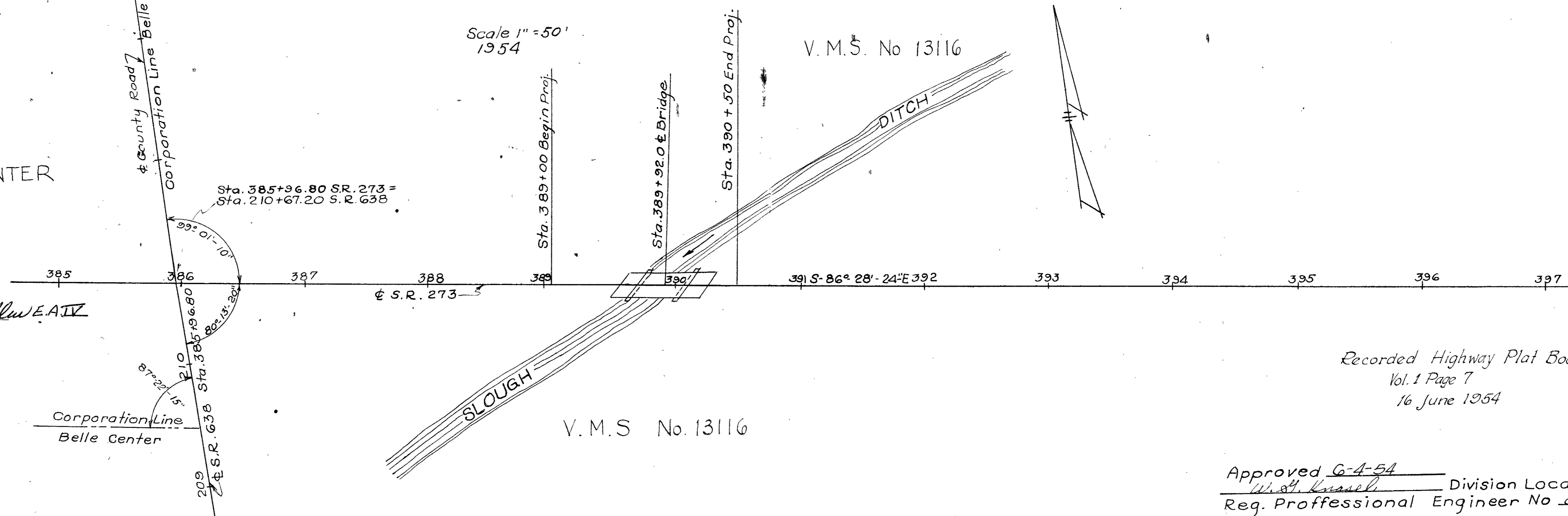
Approved G-4-54  
*W. S. Kessel* Division Location & Design Engr.  
 Reg. Professional Engineer No. 836

**LOCATION PLAN**  
**STATE ROUTE 273(737) RIDGEWAY BELLE CENTER WEST ROAD**  
**LOG. 237 (737) LOGAN COUNTY**  
**RICHLAND TOWNSHIP**

Scale 1" = 50'  
 1954

V.M.S. No 13116

BELLE CENTER



Completed Jan 31, 1955 By: *Joseph K. Allen E.A.I.V.*

STATION	DIST. FROM &	
	LEFT	RIGHT
387+00	14' ✓	14' ✓
391+00	14' ✓	14' ✓
395+00	14' ✓	14' ✓

Recorded Highway Plat Book  
 Vol. 1 Page 7  
 16 June 1954

Approved G-4-54  
*W. S. Kessel* Division Location & Design Engr.  
 Reg. Professional Engineer No. 836



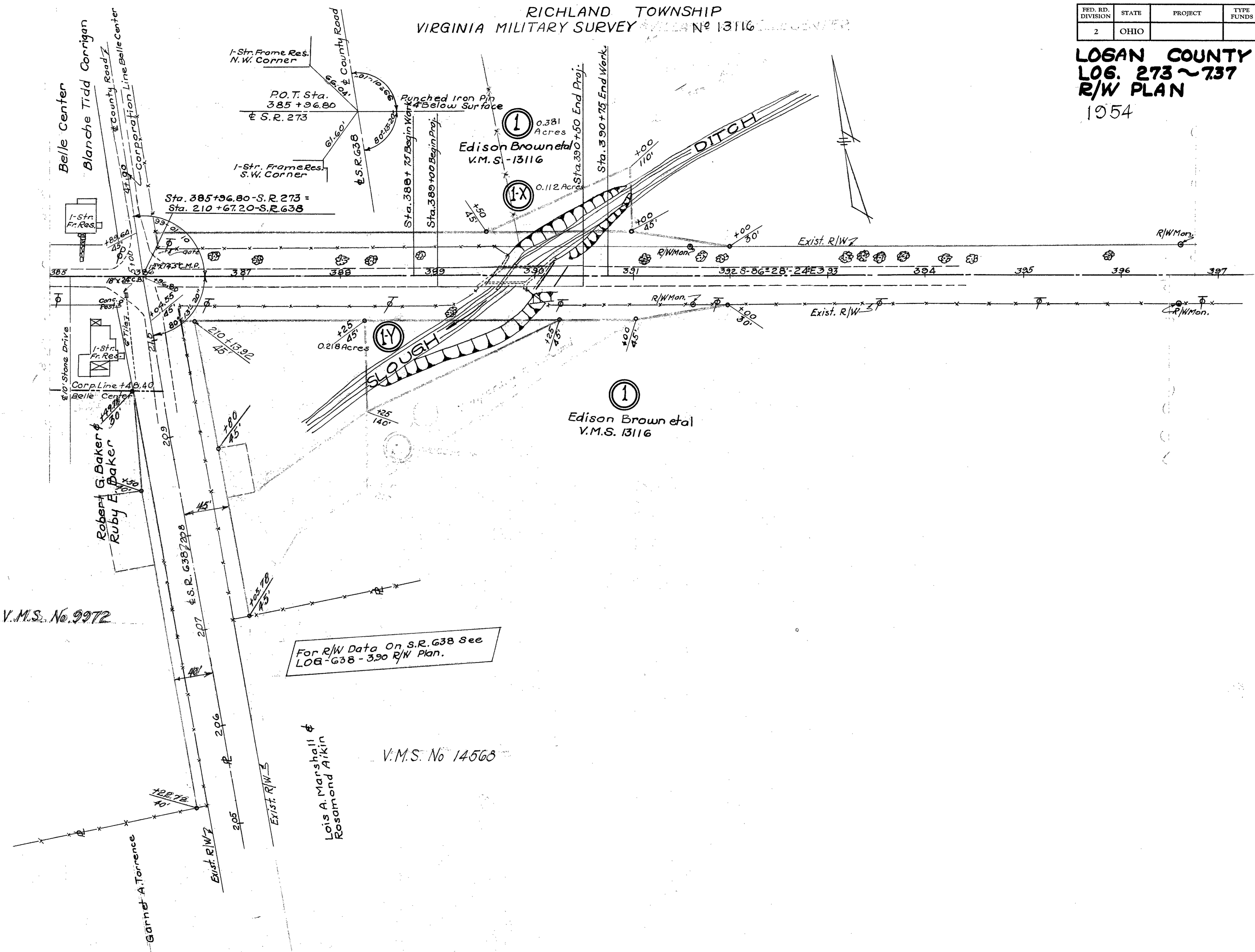


RICHLAND TOWNSHIP  
 VIRGINIA MILITARY SURVEY No 13116

FED. RD. DIVISION	STATE	PROJECT	TYPE FUNDS
2	OHIO		

28  
29

**LOGAN COUNTY**  
**LOG. 273 ~ 737**  
**R/W PLAN**  
 1954



R/W Monuments Set Feb. 1, 55

May 1954



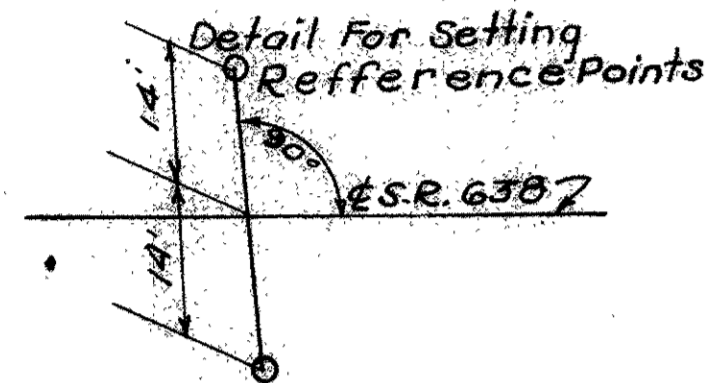
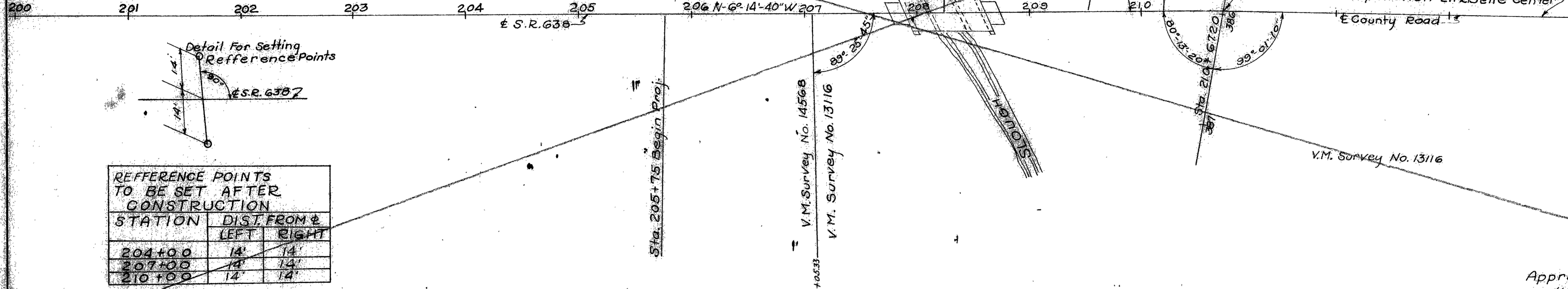
LOCATION PLAN  
STATE ROUTE 638 BELLE CENTER SOUTH ROAD  
LOG. 638(390) LOGAN COUNTY  
RICHLAND TOWNSHIP

FED. RD. DIVISION	STATE	PROJECT	TYPE FUNDS
2	OHIO		

LOGAN COUNTY  
LOG. 638(390)  
LOG. 273 (737)  
LOCATION PLANS  
1954

Scale 1" = 50'  
1954

V.M. Survey No. 5972



REFERENCE POINTS TO BE SET AFTER CONSTRUCTION

STATION	DIST. FROM C	
	LEFT	RIGHT
204+00	14'	14'
207+00	14'	14'
210+00	14'	14'

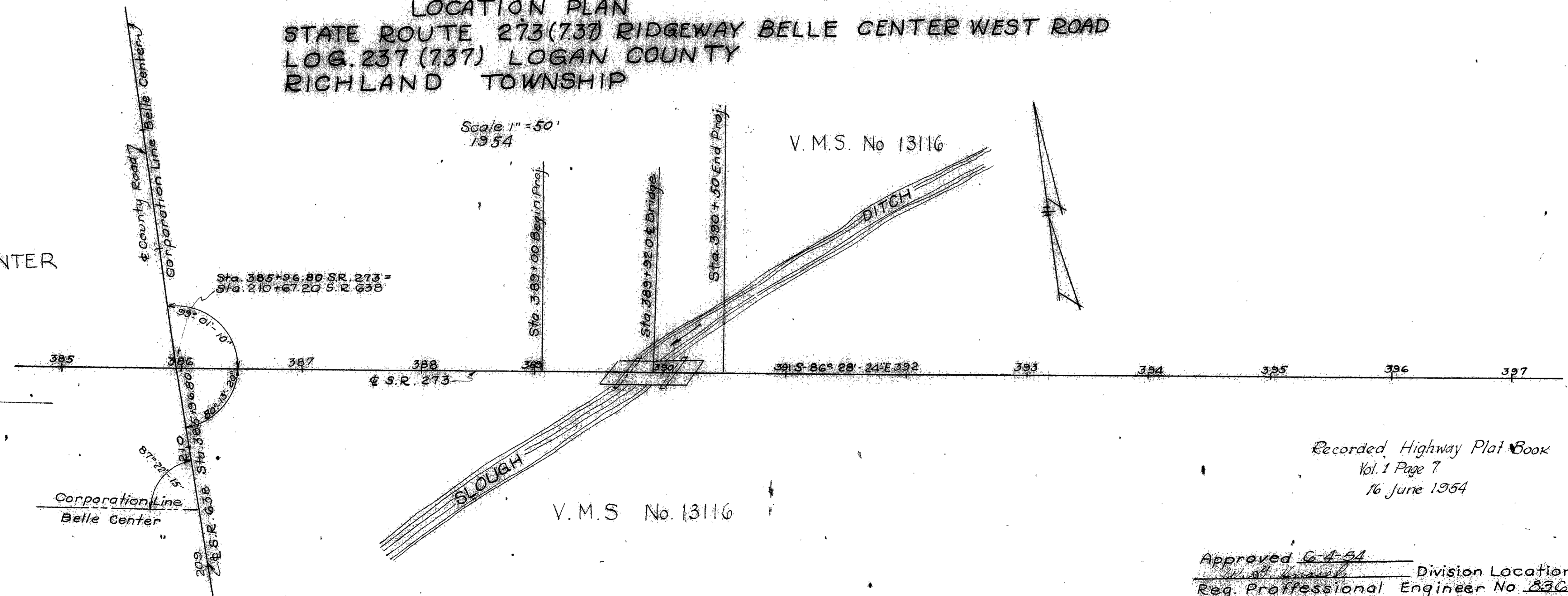
Approved 6-4-54  
W. J. Kimmel Division Location & Design Engr.  
Reg. Professional Engineer No. 836

LOCATION PLAN  
STATE ROUTE 273(737) RIDGEWAY BELLE CENTER WEST ROAD  
LOG. 237 (737) LOGAN COUNTY  
RICHLAND TOWNSHIP

Scale 1" = 50'  
1954

V.M.S. No 13116

BELLE CENTER



Completed 19 By:

REFERENCE POINTS TO BE SET AFTER CONSTRUCTION

STATION	DIST FROM C	
	LEFT	RIGHT
387+00	14'	14'
391+00	14'	14'
395+00	14'	14'

Recorded Highway Plat Book  
Vol. 1 Page 7  
16 June 1954

Approved 6-4-54  
W. J. Kimmel Division Location & Design Engr.  
Reg. Professional Engineer No. 836



RICHLAND TOWNSHIP  
 VIRGINIA MILITARY SURVEY

No. 9972

DIST. DIVISION	STATE	PROJECT	TYPE FUNDS
2	OHIO		

LOGAN COUNTY  
 LOG 638 ~ 350  
 R/W PLAN LOG-273-737  
 1954

Garnet A. Torrence  
 V.M.S. No. 9972

Robert G. Baker &  
 Ruby E. Baker  
 V.M.S. No. 9972

BELLE CENTER

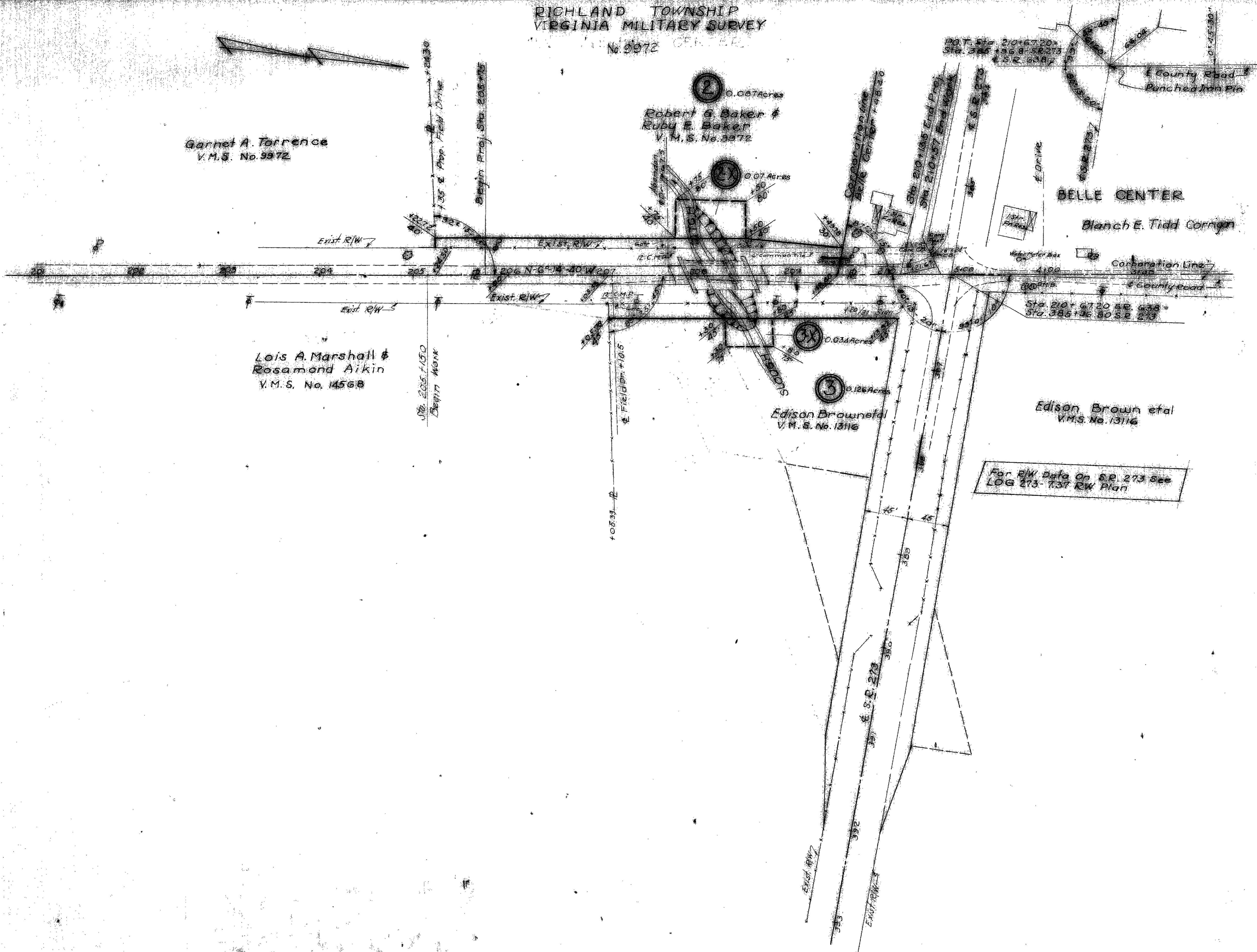
Blanch E. Tidd Corners

Lois A. Marshall &  
 Rosamond Aikin  
 V.M.S. No. 14568

Edison Brown et al  
 V.M.S. No. 13116

Edison Brown et al  
 V.M.S. No. 13116

For R/W Data On S.P. 273 See  
 LOG 273-737 R/W Plan



LOG-273-737  
 PLAN  
 513-513-1-21