

LOCATION PLAN

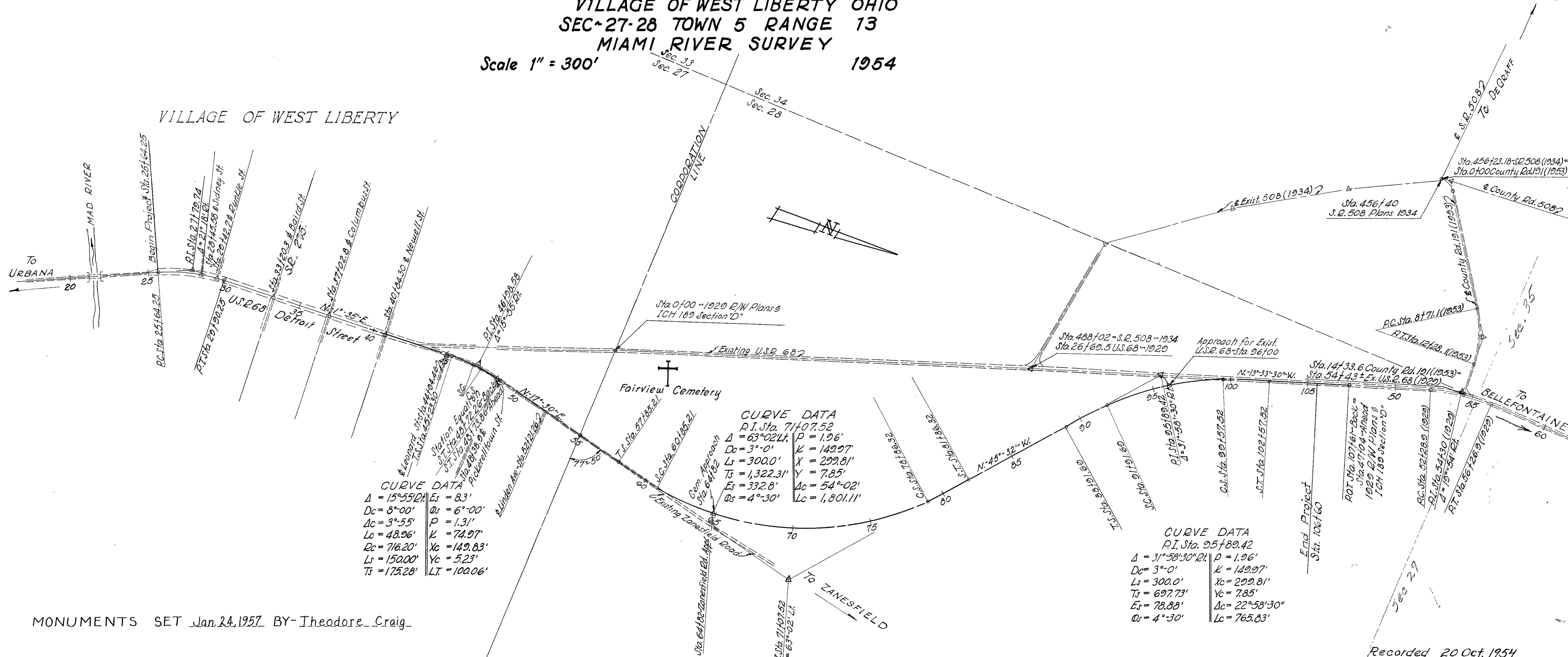
URBANA ~ BELLEFONTAINE ROAD
 LOG ~ 68 ~ (0.49 - 1.04)
 LOGAN COUNTY
 LIBERTY TOWNSHIP
 VILLAGE OF WEST LIBERTY OHIO
 SEC ~ 27-28 TOWN 5 RANGE 13
 MIAMI RIVER SURVEY

Scale 1" = 300'

1954

FED. RD DIVISION	STATE	PROJECT
2	OHIO	

LOGAN COUNTY
 LOG ~ 68 ~ (0.49 - 1.04)



CURVE DATA

$\Delta = 15^{\circ}55'21''$	$E_s = 8.3'$
$D_c = 8^{\circ}00'$	$D_s = 6^{\circ}00'$
$\Delta_c = 3^{\circ}55'$	$P = 1.31'$
$L_c = 48.96'$	$K = 74.97'$
$R_c = 716.20'$	$X_c = 142.83'$
$L_s = 150.00'$	$Y_c = 5.23'$
$T_s = 175.28'$	$L.T. = 100.06'$

CURVE DATA

P.I. Sta. 71+07.52	$P = 1.96'$
$\Delta = 63^{\circ}02'14''$	$K = 149.97'$
$D_c = 3^{\circ}0'$	$X_c = 229.81'$
$L_s = 300.0'$	$Y_c = 7.85'$
$T_s = 1,322.31'$	$\Delta_c = 54^{\circ}02'$
$E_s = 332.8'$	$L_c = 1,801.11'$
$D_s = 4^{\circ}30'$	

CURVE DATA

P.I. Sta. 95+89.42	$P = 1.96'$
$\Delta = 31^{\circ}58'30''$	$K = 149.97'$
$D_c = 3^{\circ}0'$	$X_c = 229.81'$
$L_s = 300.0'$	$Y_c = 7.85'$
$T_s = 697.73'$	$\Delta_c = 22^{\circ}58'30''$
$E_s = 78.88'$	$L_c = 765.83'$
$D_s = 4^{\circ}30'$	

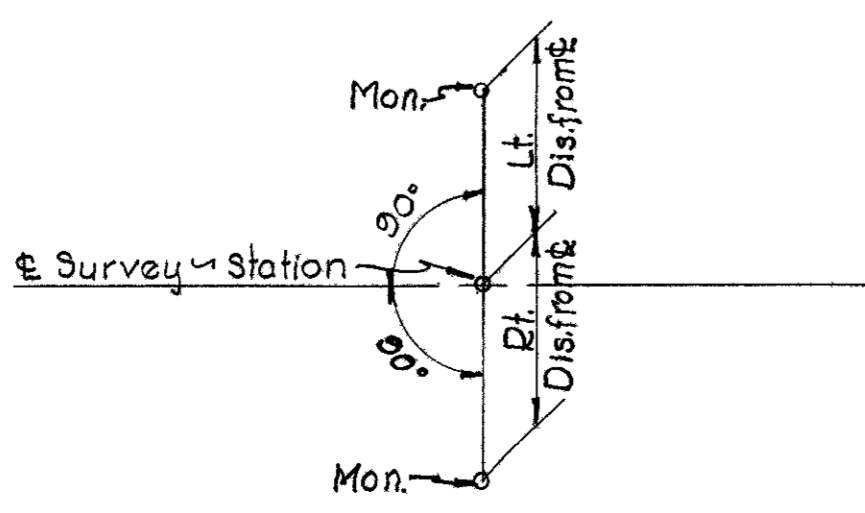
MONUMENTS SET Jan. 24, 1957 BY Theodore Craig

ADDED AFTER RECORDING

CENTER LINE REFERENCE POINTS TO BE SET AFTER CONSTRUCTION

STATION	Dis. from C.L.		STATION	Dis. from C.L.	
	Rt.	Lt.		Rt.	Lt.
43+00	25	25	75+00	20	20
45+23.30 T.S.	28	24	78+86.32 C.S.		
46+73.30 S.C.	23	20	81+86.32 S.T.		
47+22.26 C.S.	19	19	86+00		
48+72.26 ST Back			88+91.09 T.S.		
48+73.86 A Head	25	25	91+91.09 S.C.	20	
53+50	25	30	95+74.01 M.P.		
57+85.21 T.S.	20	20	99+57.52 C.S.	20	
60+85.21 S.C.	20	20	102+57.52 S.T.	20	20
65+00	20	20	107+00	17	15
69+85.77 M.P.	20	20			

DETAIL FOR SETTING CENTER LINE REFERENCE POINT MONUMENTS



For Station & Distance Rt. & Lt. & See Table Lt.

Recorded 20 Oct. 1954
 Highway Plat Bk. 1 Pt. 9

APPROVED W. S. Knasel
 LOCATION & DESIGN ENGINEER
 REGISTERED SURVEYOR No. 836

FED. RD. DIVISION	STATE	PROJECT
2	OHIO	



VILLAGE of WEST LIBERTY

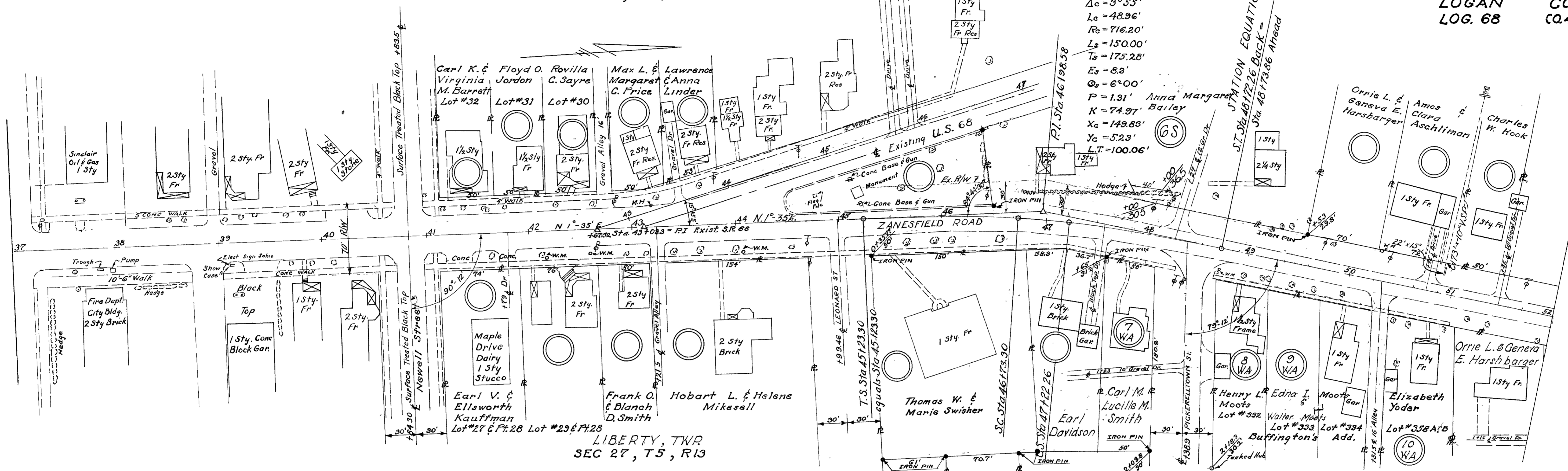
LIBERTY, TWP
SEC 27, T5, R13

CURVE DATA

$\Delta = 15^{\circ}55' Rt$
 $Dc = 8^{\circ}00'$
 $\Delta c = 3^{\circ}55'$
 $Lc = 48.96'$
 $Rc = 716.20'$
 $Ls = 150.00'$
 $Ts = 175.28'$
 $Es = 8.3'$
 $Qs = 6^{\circ}00'$
 $P = 1.31'$
 $K = 74.97'$
 $Xc = 149.83'$
 $Yc = 5.23'$
 $L.T. = 100.06'$

R/W
LOGAN
LOG. 68

PLANS
COUNTY
(0.46) (1.04)



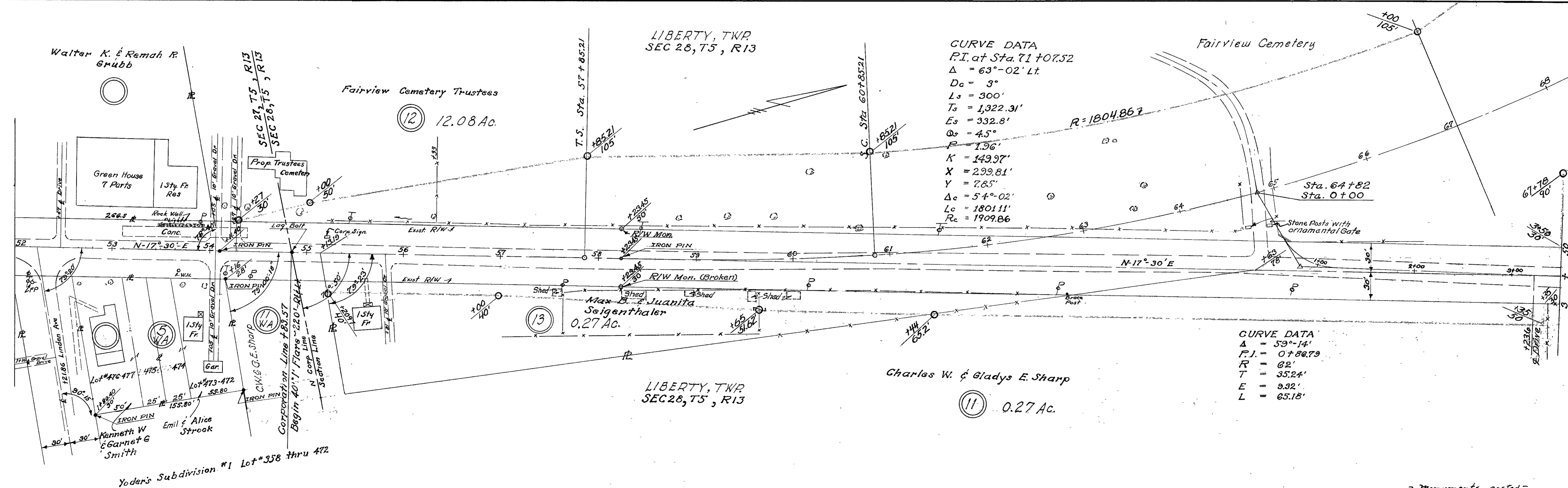
LIBERTY, TWP
SEC 27, T5, R13

LIBERTY, TWP
SEC 28, T5, R13

CURVE DATA

P.I. at Sta. 71 + 07.52
 $\Delta = 63^{\circ}02' Lt$
 $Dc = 3^{\circ}$
 $Ls = 300'$
 $Ts = 1,322.31'$
 $Es = 332.8'$
 $Qs = 4.5'$
 $P = 1.36'$
 $K = 149.97'$
 $X = 299.81'$
 $Y = 7.85'$
 $\Delta c = 5^{\circ}4^{\circ}02'$
 $Lc = 1801.11'$
 $Rc = 1909.86'$

Fairview Cemetery



LIBERTY, TWP
SEC 28, T5, R13

Charles W. & Gladys E. Sharp

(11) 0.27 Ac.

CURVE DATA
 $\Delta = 53^{\circ}14'$
 $P.I. = 0 + 86.79$
 $R = 62'$
 $T = 35.24'$
 $E = 9.32'$
 $L = 65.18'$

FED. RD. DIVISION	STATE	PROJECT	TYPE FUNDS
2	OHIO		

73
74

R/W PLANS
LOGAN COUNTY
LOG 68 (046)(1.04)

LIBERTY, TWP.
SEC 28, T5, R13

Fairview Cemetery Trustees

(12) 12.08 Ac.

LIBERTY, TWP.
SEC 28, T5, R13

FAIRVIEW CEMETERY

LIBERTY, TWP.
SEC 28, T5, R13

David H. Zook Jr.

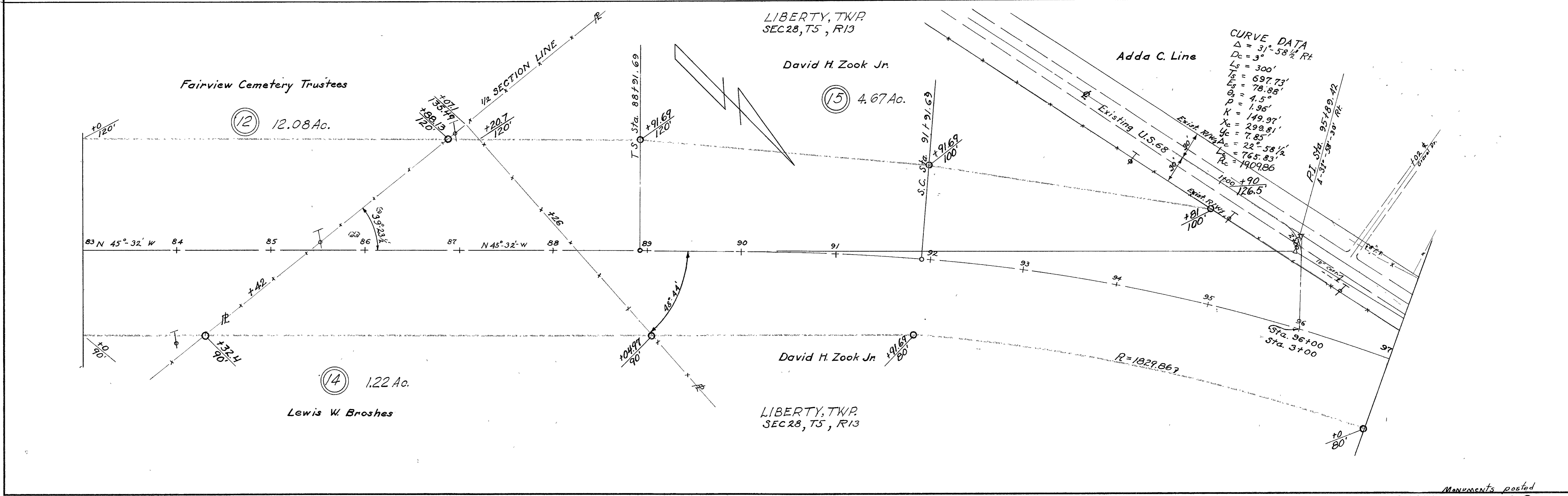
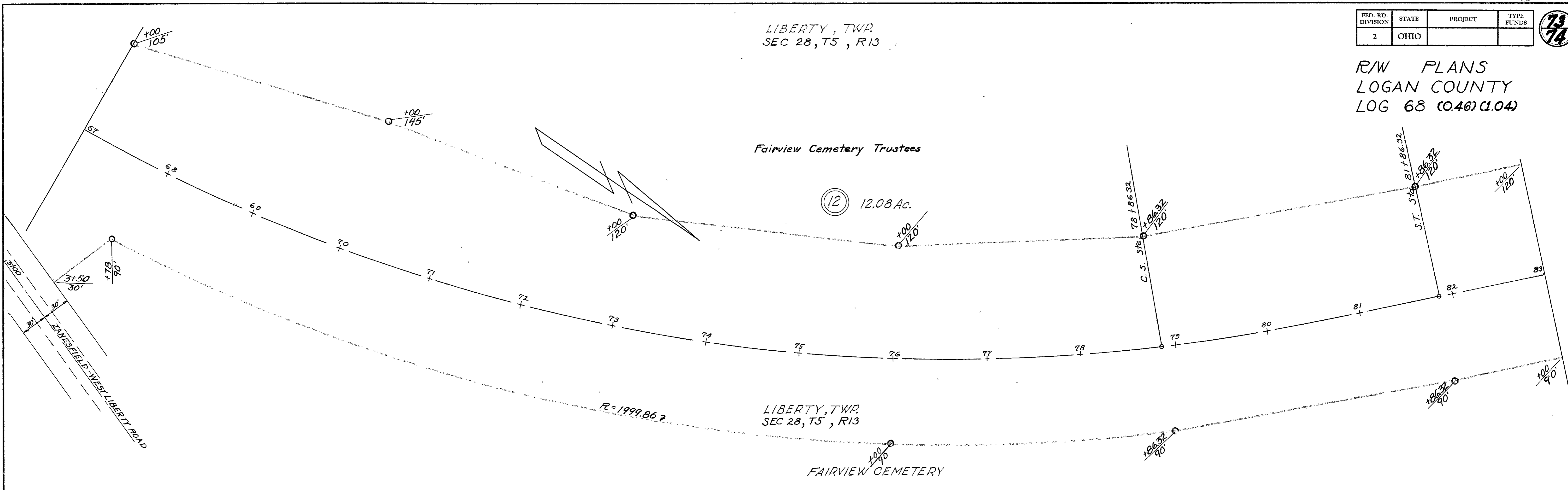
(15) 4.67 Ac.

LIBERTY, TWP.
SEC 28, T5, R13

David H. Zook Jr.

Adda C. Line

CURVE DATA
 $\Delta = 31^{\circ} 58' \frac{1}{2} R$
 $D_c = 3'$
 $L_s = 300'$
 $T_s = 697.73'$
 $E_s = 78.88'$
 $\theta_s = 4.5^{\circ}$
 $P = 1.95'$
 $K = 149.97'$
 $X_c = 299.81'$
 $Y_c = 7.85'$
 $L = 22^{\circ} 58' \frac{1}{2}$
 $L_c = 765.83'$
 $R_c = 1909.86'$



Monuments posted

LIBERTY, TWP.
SEC 28, T5, R13

FED. RD. DIVISION	STATE	PROJECT	TYPE FUNDS
2	OHIO		

74
74

R/W PLANS
LOGAN COUNTY
LOG 68 (0.46)(1.04)

