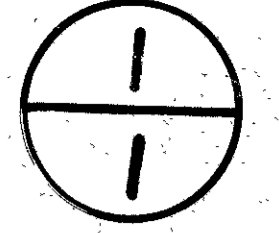
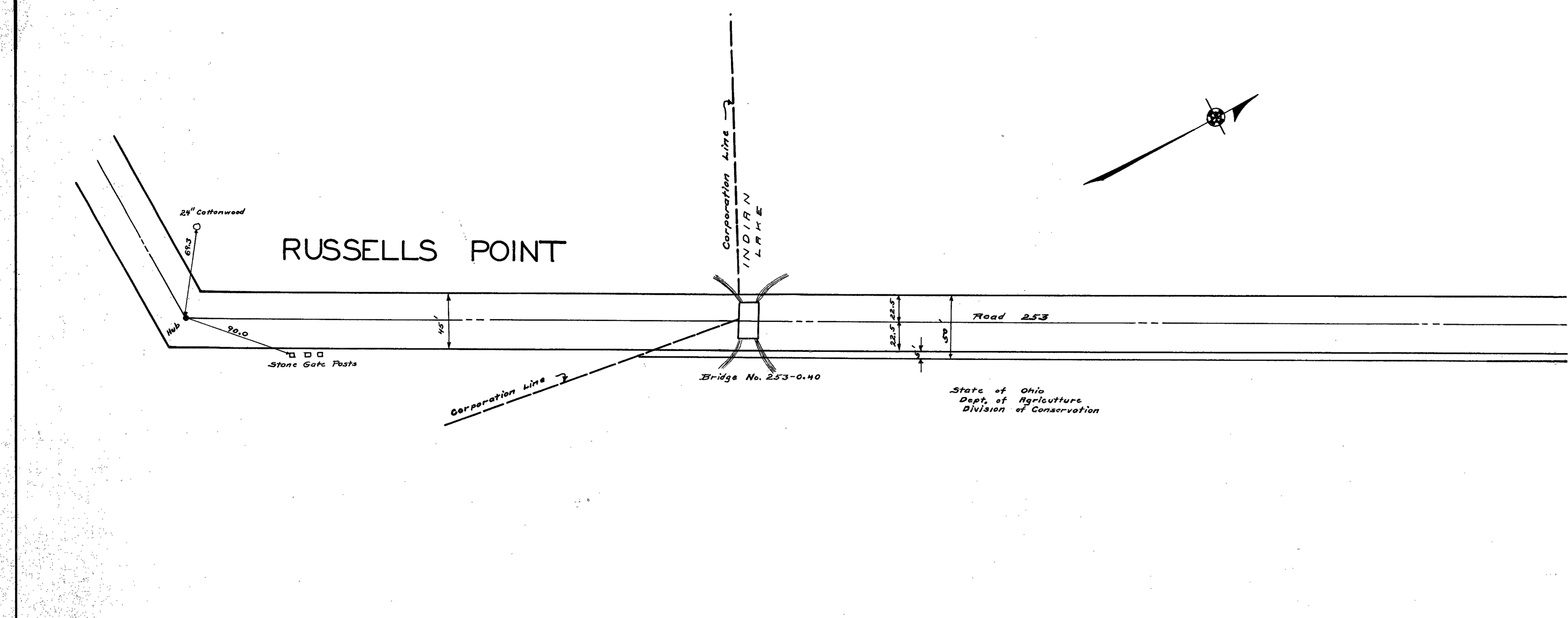


ROAD 253 &
CHAUTAQUA BOULEVARD
WASHINGTON TOWNSHIP
LOGAN COUNTY OHIO



We the undersigned, owners of the above described property, dedicate the same to public use for road and other public purposes consistent therewith clear of all obstructions which interfere with the improvement and/or maintenance of the highway at the time of improvement
Owners _____
Witnesses _____

Table with two columns: Owners and Witnesses. Multiple blank rows for signatures.



Approved as to owners this 26 day June 1936
R. Wright Deputy County Engineer.

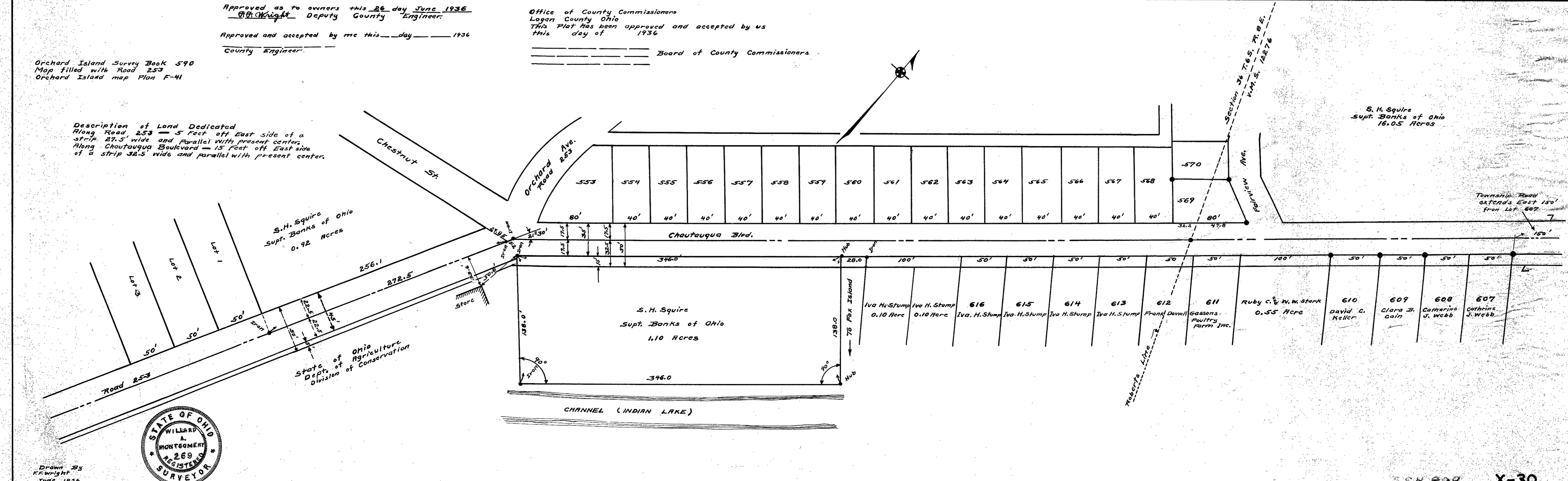
Office of County Commissioners
Logan County Ohio
This Plat has been approved and accepted by us
this day of _____ 1936

Approved and accepted by me this ___ day ___ 1936
County Engineer

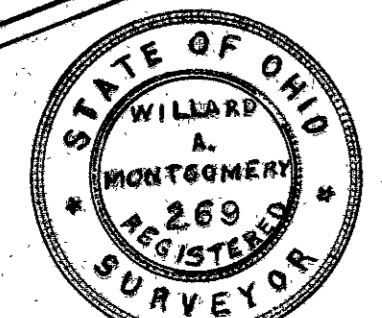
Board of County Commissioners

Orchard Island Survey Book 590
Map filled with Road 253
Orchard Island map Plan F-41

Description of Land Dedicated
Along Road 253 — 5 Feet off East side of a strip 27.5 wide and parallel with present center.
Along Chautauqua Boulevard — 15 Feet off East side of a strip 32.5 wide and parallel with present center.



ROAD 253



Drawn By
R. Wright
June 1936