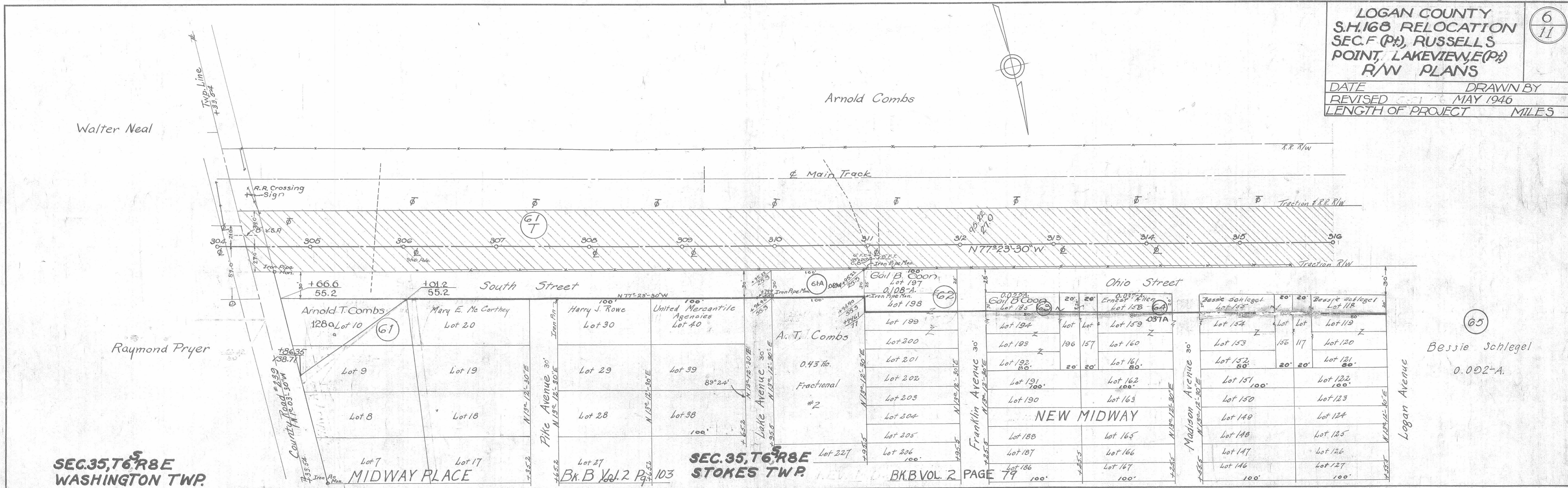


LOGAN COUNTY
S.H. 168 RELOCATION
SEC. F (P), RUSSELLS
POINT, LAKEVIEW (P)
R/W PLANS

6
11

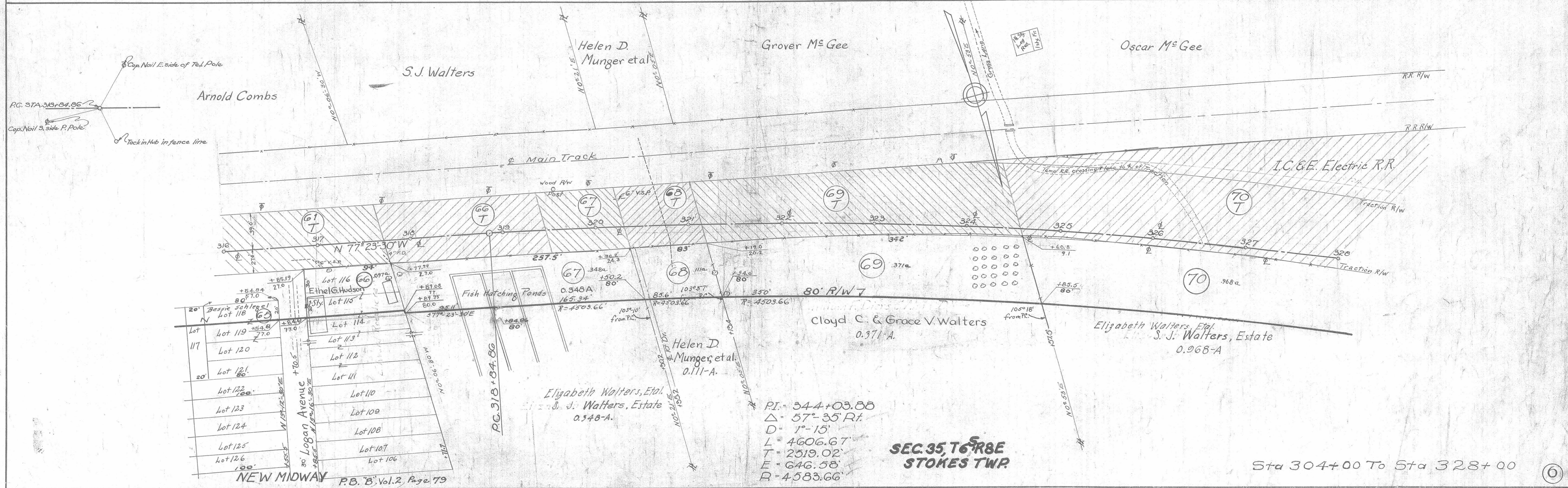
DATE _____ DRAWN BY _____
REVISED _____ MAY 1946
LENGTH OF PROJECT _____ MILES



SEC. 35, T6, R8E
WASHINGTON TWP.

SEC. 35, T6, R8E
STOKES TWP.

B.K.B. VOL. 2
PAGE 79



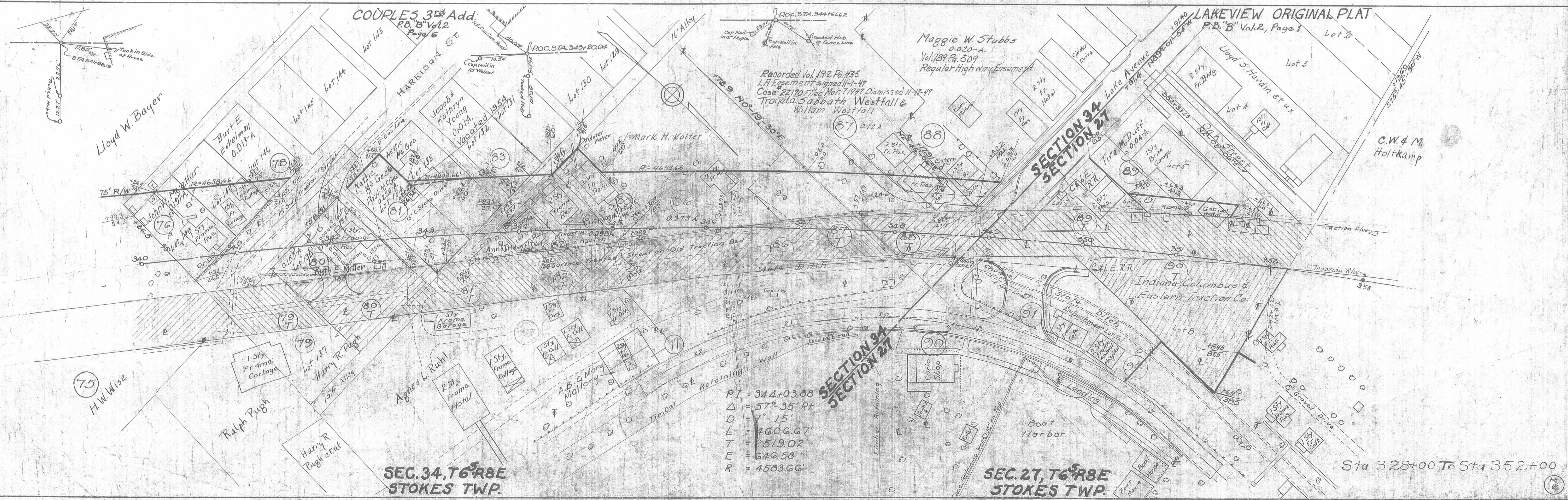
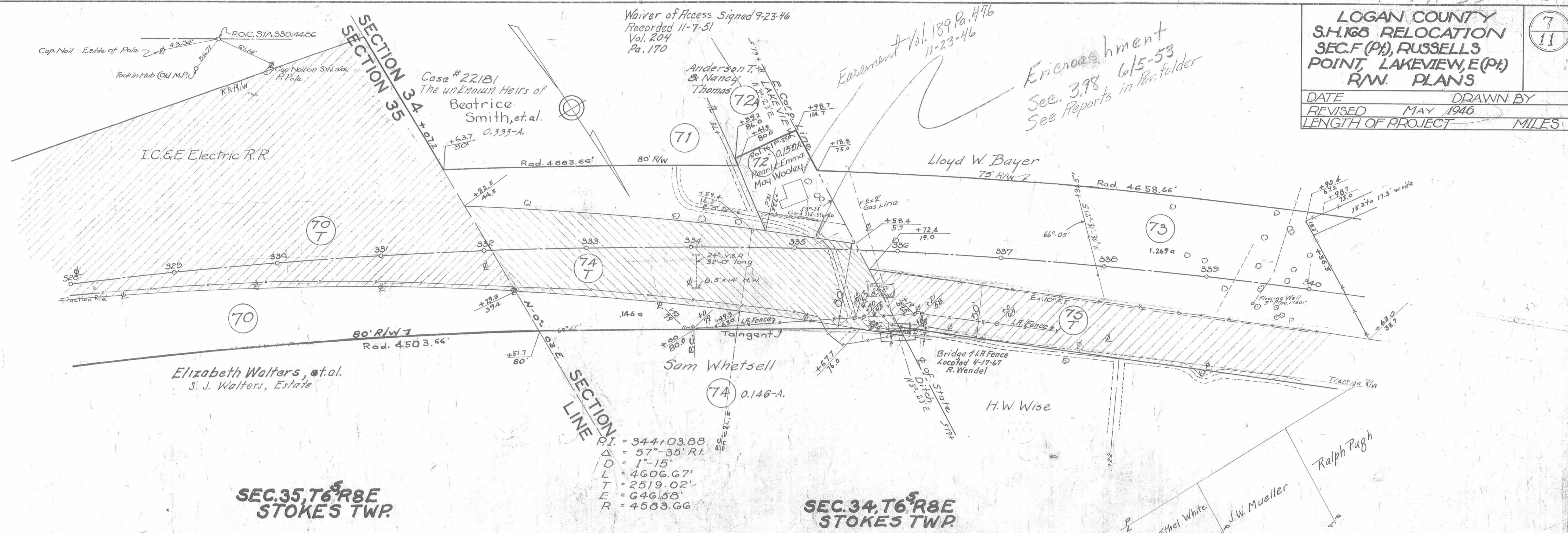
PI. = 344+03.88
Δ = 57° 35' Rt.
D = 1'-15'
L = 4606.67
T = 2519.02
E = 646.58
R = 4583.66

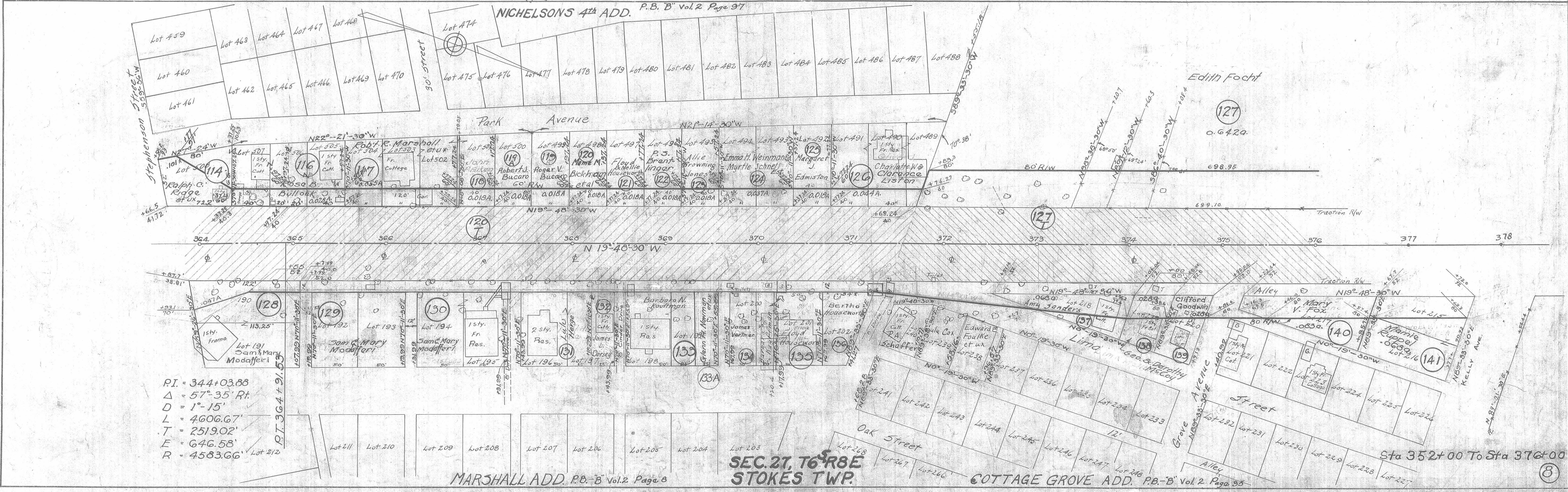
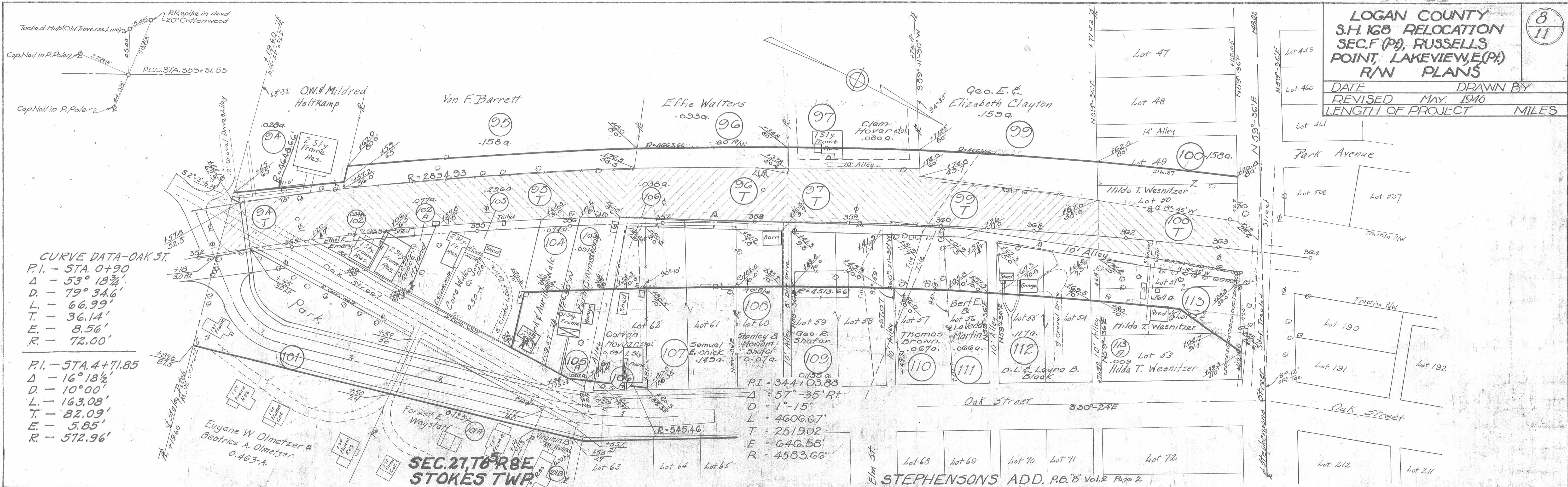
SEC. 35, T6, R8E
STOKES TWP.

Sta 304+00 To Sta 328+00

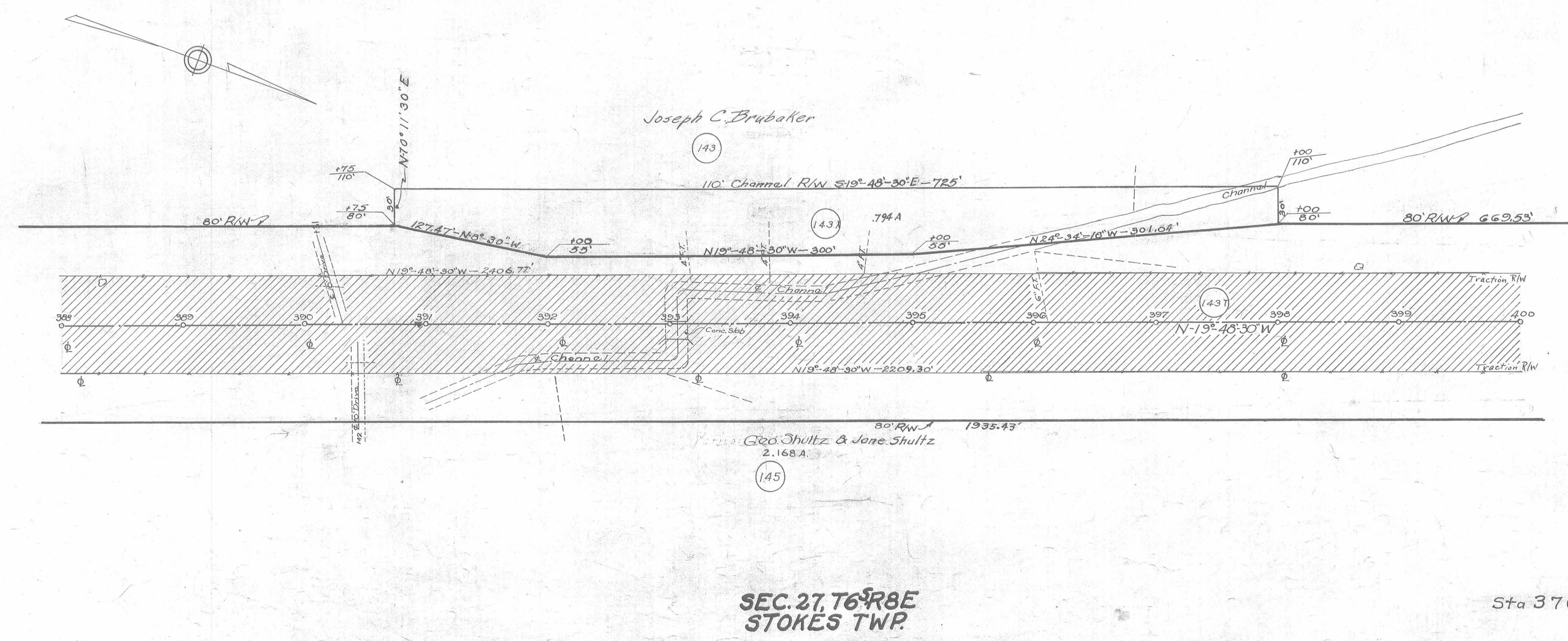
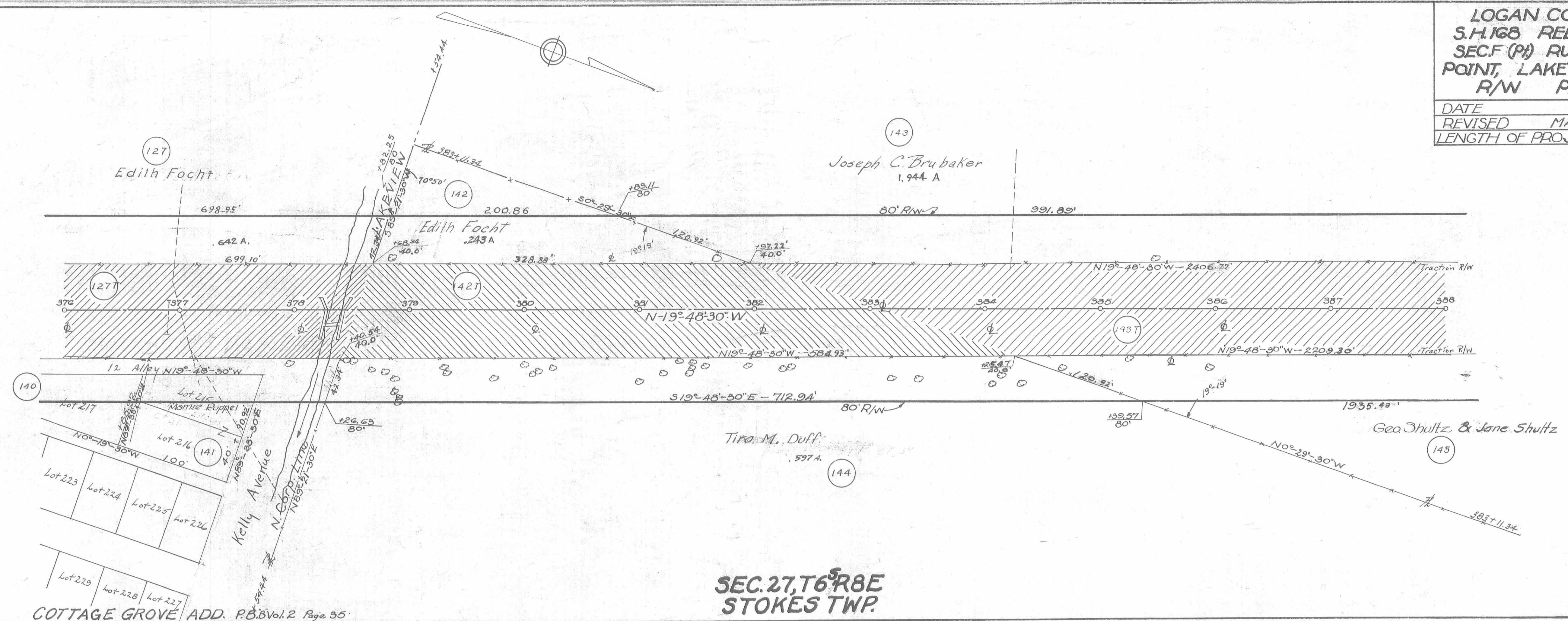
LOGAN COUNTY
S.H. 168 RELOCATION
SEC. F (PI), RUSSELLS
POINT, LAKEVIEW, E (PI)
R/W PLANS

DATE	DRAWN BY
REVISED MAY 1946	
LENGTH OF PROJECT	MILES

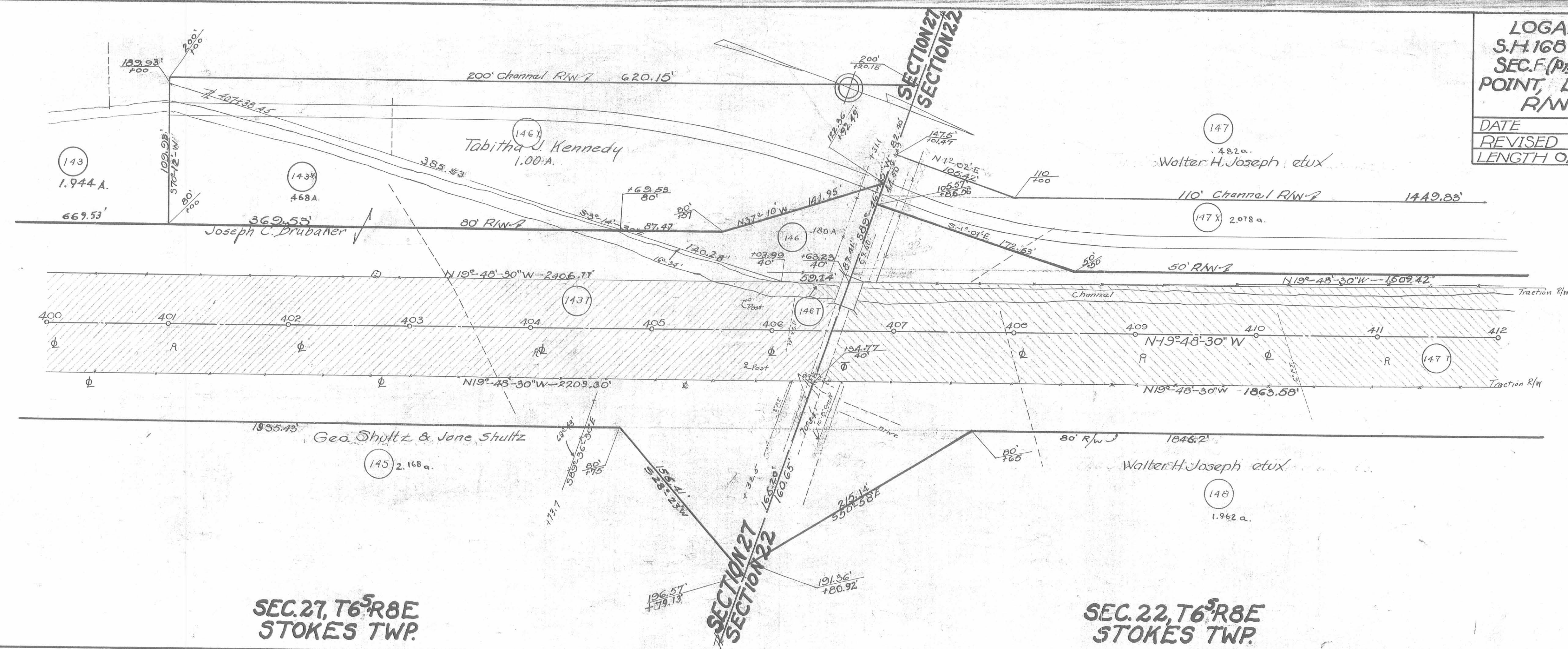




DATE	DRAWN BY
REVISED MAY 1946	
LENGTH OF PROJECT	MILES

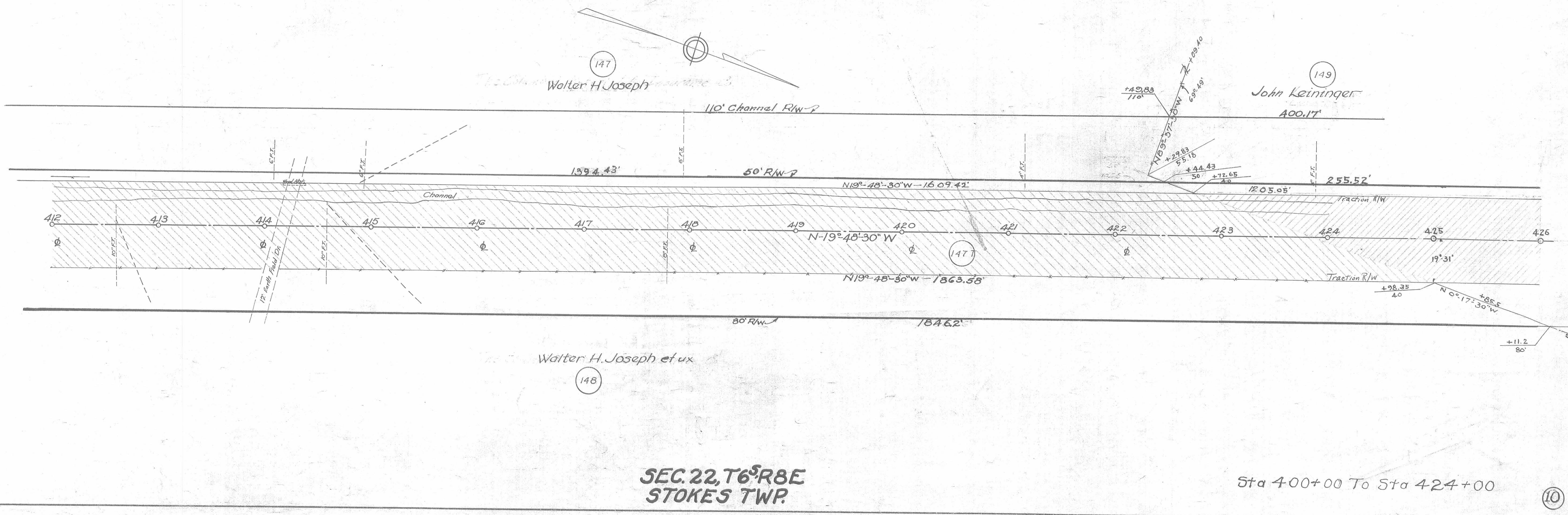


Sta 376+00 To Sta 400+00



SEC. 27, T6^sR8E
 STOKES TWP.

SEC. 22, T6^sR8E
 STOKES TWP.



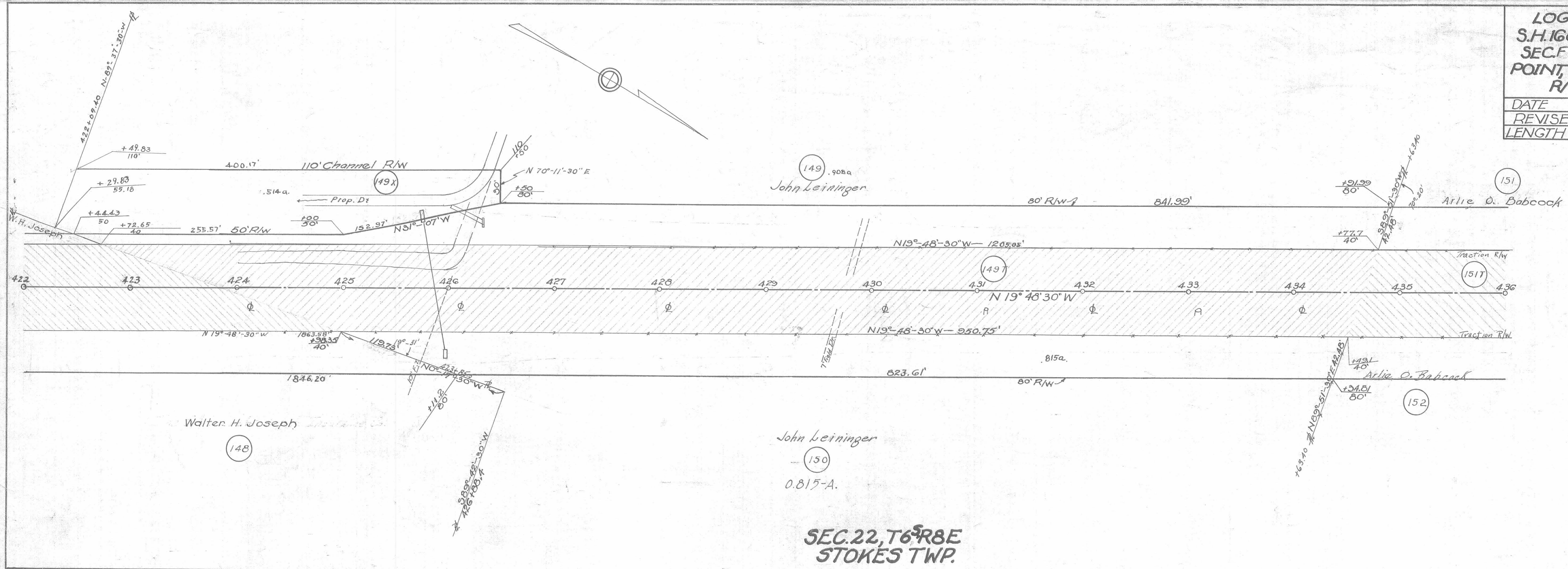
SEC. 22, T6^sR8E
 STOKES TWP.

Sta 400+00 To Sta 424+00

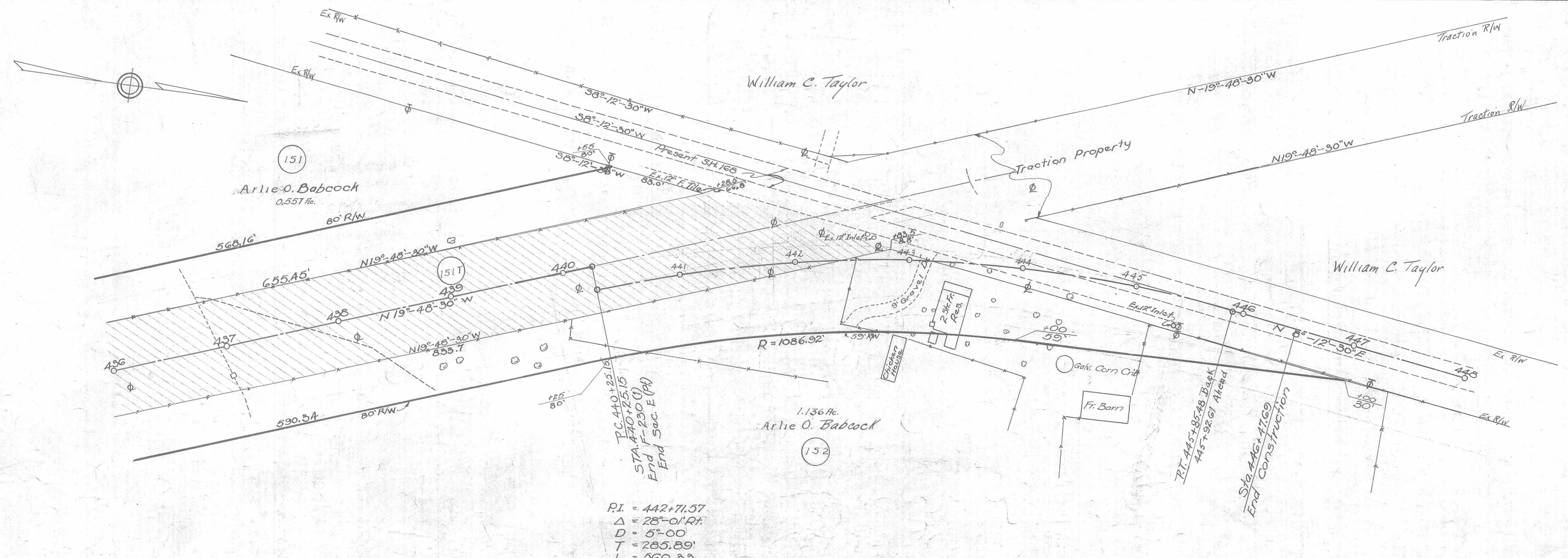
LOGAN COUNTY
 S.H. 168 RELOCATION
 SEC. F (P1), RUSSELLS
 POINT, LAKEVIEW, E (P1)
 R/W PLANS

11
 11

DATE _____ DRAWN BY _____
 REVISED MAY 1946
 LENGTH OF PROJECT _____ MILES



SEC. 22, T6R8E
 STOKES TWP.



PI = 442+71.57
 $\Delta = 28^{\circ} 01' R/L$
 D = 5'-00"
 T = 285.89'
 L = 360.33'
 E = 35.12'
 R = 1145.92'

SEC. 22, T6R8E
 STOKES TWP.

Sta 424+00 To Sta 448+00

11