

L-34

# LOCATION PLAN

## S. H. 236 SEC. E (PT.) C & WEST MANSFIELD (PT.)

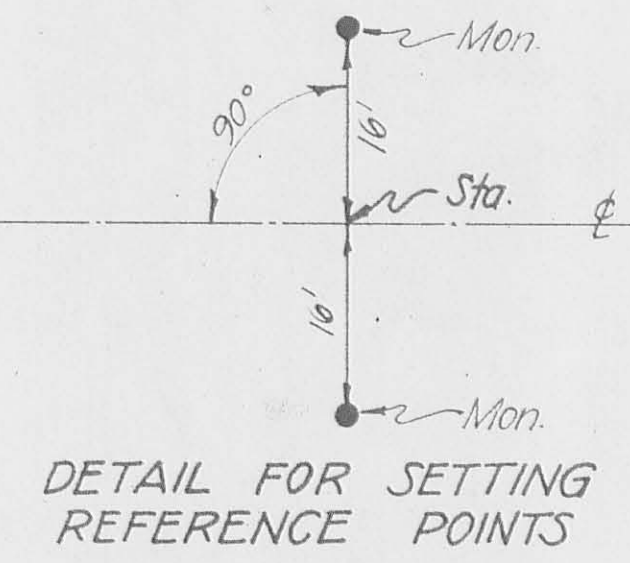
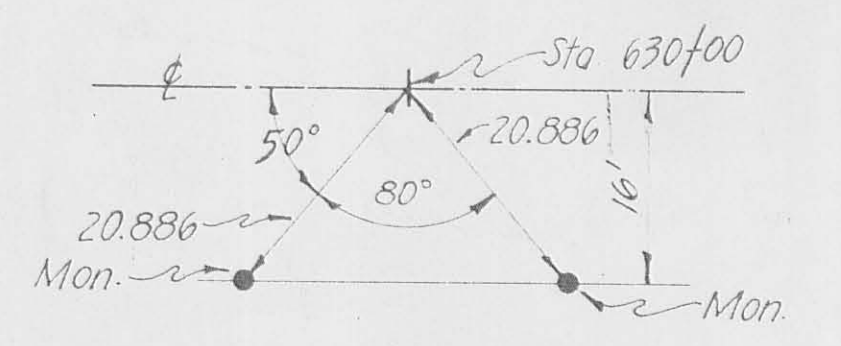
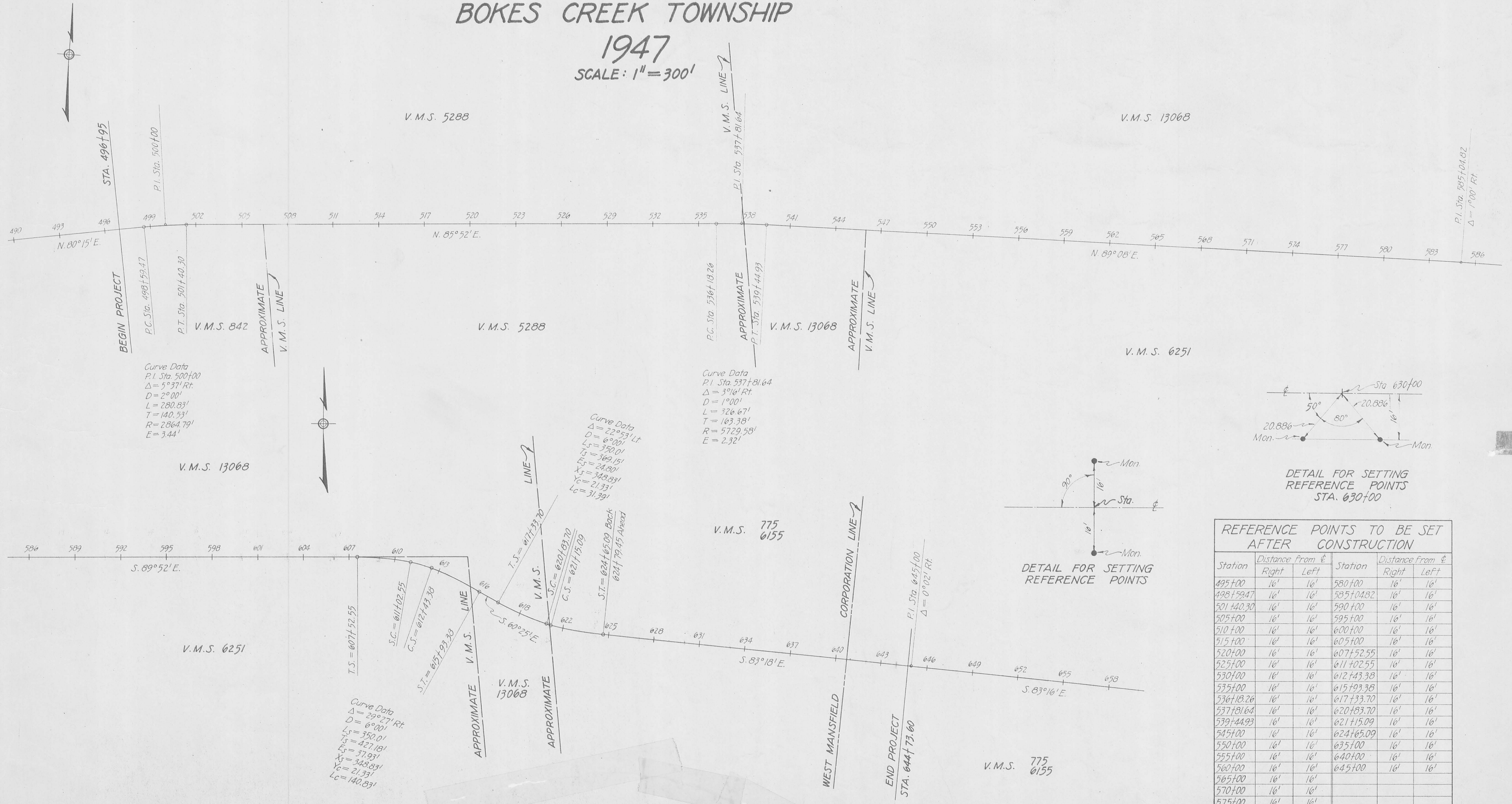
### BELLEFONTAINE ~ RICHWOOD ROAD

#### BOKES CREEK TOWNSHIP

1947  
SCALE: 1" = 300'

FED. RD. DIVISION	STATE	PROJECT	FISCAL YEAR
2	OHIO	S-334(1)	1947

LOGAN COUNTY  
S. H. 236 SEC. E (PT.) C &  
WEST MANSFIELD (PT.)



REFERENCE POINTS TO BE SET AFTER CONSTRUCTION

Station	Distance from $\phi$		Station	Distance from $\phi$	
	Right	Left		Right	Left
495+00	16'	16'	580+00	16'	16'
498+59.47	16'	16'	585+04.82	16'	16'
501+40.30	16'	16'	590+00	16'	16'
505+00	16'	16'	595+00	16'	16'
510+00	16'	16'	600+00	16'	16'
515+00	16'	16'	605+00	16'	16'
520+00	16'	16'	607+52.55	16'	16'
525+00	16'	16'	611+02.55	16'	16'
530+00	16'	16'	612+43.38	16'	16'
535+00	16'	16'	615+93.38	16'	16'
536+18.26	16'	16'	617+33.70	16'	16'
537+81.64	16'	16'	620+83.70	16'	16'
539+44.93	16'	16'	621+15.09	16'	16'
545+00	16'	16'	624+65.09	16'	16'
550+00	16'	16'	635+00	16'	16'
555+00	16'	16'	640+00	16'	16'
560+00	16'	16'	645+00	16'	16'
565+00	16'	16'			
570+00	16'	16'			
575+00	16'	16'			

APPROVED Nov 5, 1947  
Rene V. Cooper, DIV. R.W. ENGINEER  
REG. PROFESSIONAL ENGINEER NO. 504

L-34

L-34

L-34

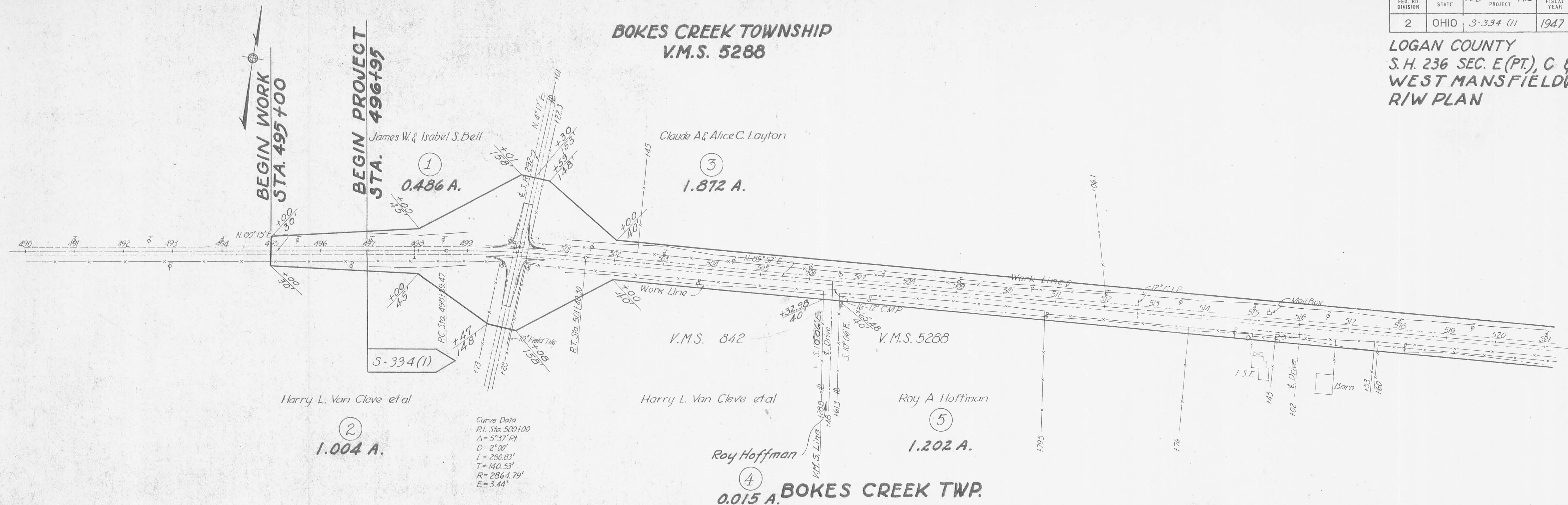


FED. RD. DIVISION	STATE	FED. PROJECT AID	FISCAL YEAR
2	OHIO	S-334 (1)	1947

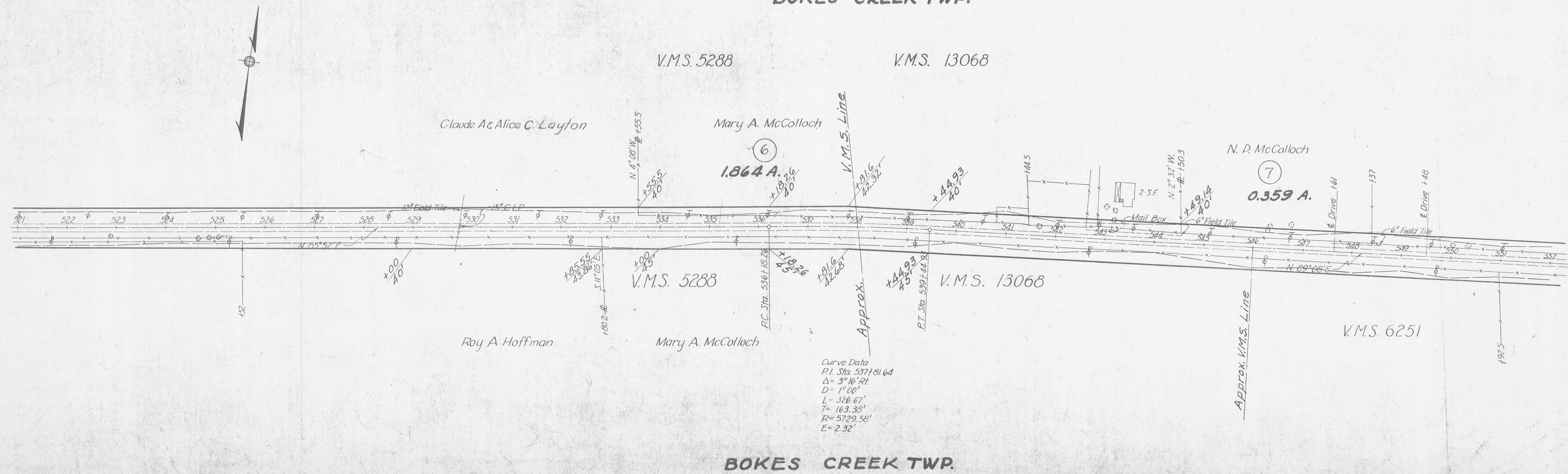
1  
3

LOGAN COUNTY  
S.H. 236 SEC. E (PT.), C &  
WEST MANSFIELD (PT.)  
R/W PLAN

**BOKES CREEK TOWNSHIP  
V.M.S. 5288**



**BOKES CREEK TWP.**



**BOKES CREEK TWP.**

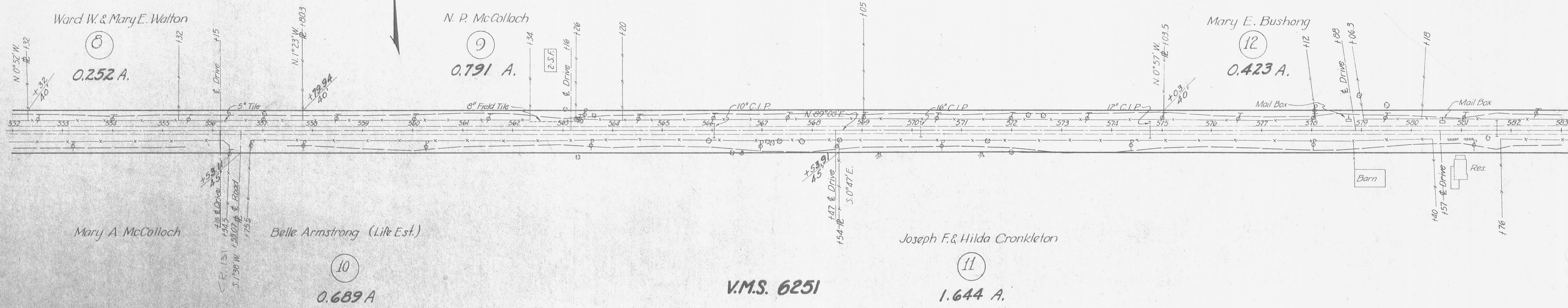


**BOKES CREEK TOWNSHIP**  
**V.M.S 13068**

FED. RD. DIVISION	STATE	FED. PROJECT AND	FISCAL YEAR
2	OHIO	S-334(1)	1947

2  
3

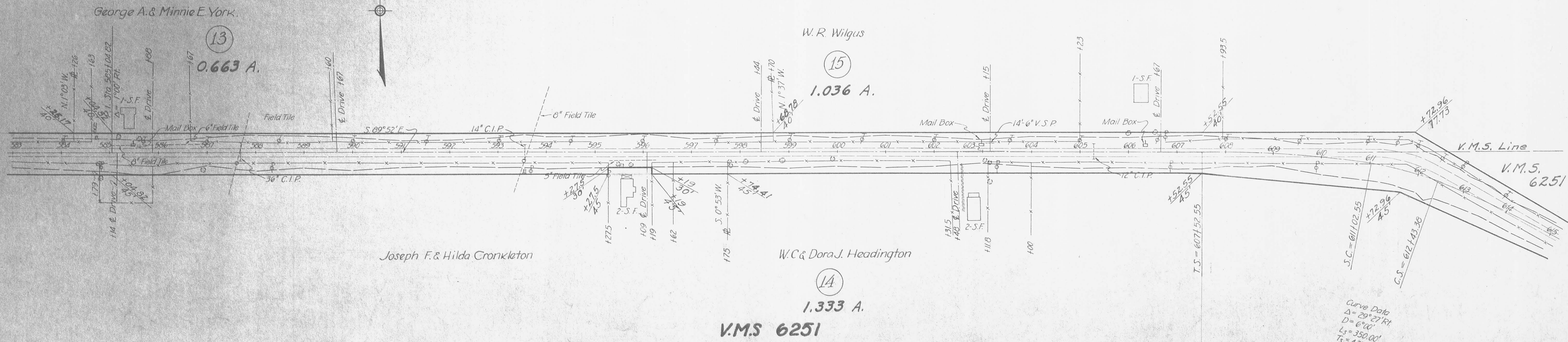
**LOGAN COUNTY**  
**S. H. 236 SEC. E (PT.) C &**  
**WEST MANSFIELD (PT.)**  
**R/W PLAN**



**BOKES CREEK TWP.**

**BOKES CREEK TWP.**

**V.M.S. 13068**



**BOKES CREEK TWP.**

Curve Data  
 $\Delta = 29^{\circ}27'14''$   
 $D = 6100'$   
 $L_s = 350.00'$   
 $T_s = 427.18'$   
 $E_s = 37.73'$   
 $X_c = 348.63'$   
 $Y_c = 21.33'$   
 $L_c = 140.63'$



