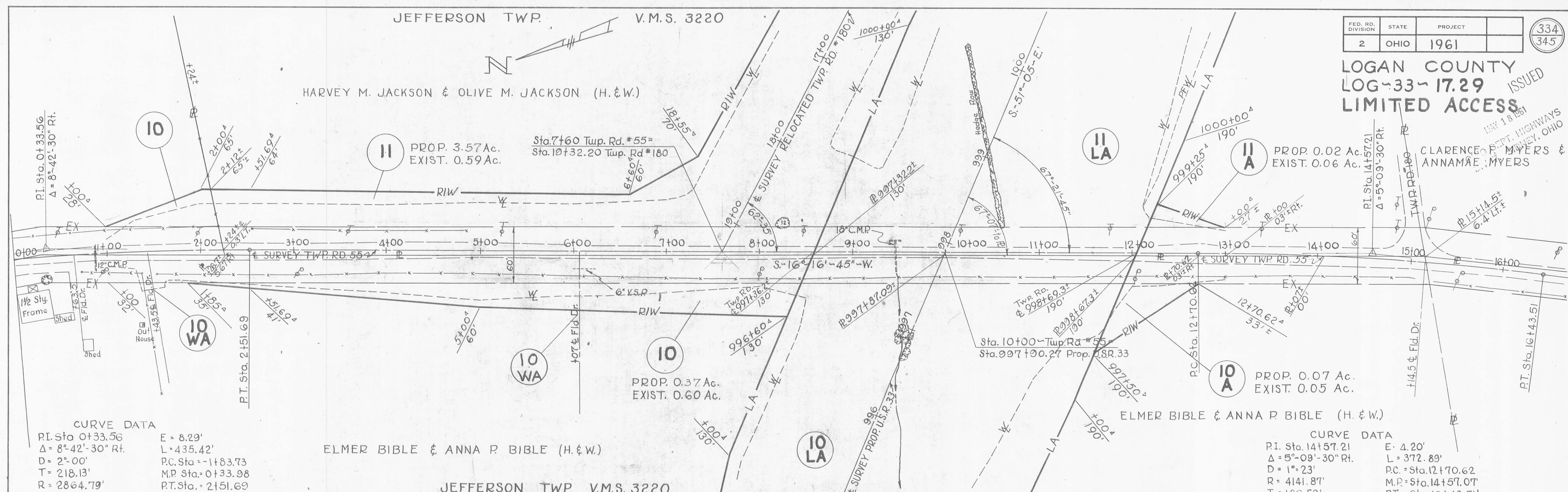


FED. RD. DIVISION	STATE	PROJECT	334 345
2	OHIO	1961	

LOGAN COUNTY
LOG-33-17.29
LIMITED ACCESS

ISSUED
MAY 18 1961
CLARENCE F. MYERS & ANNAMAE MYERS

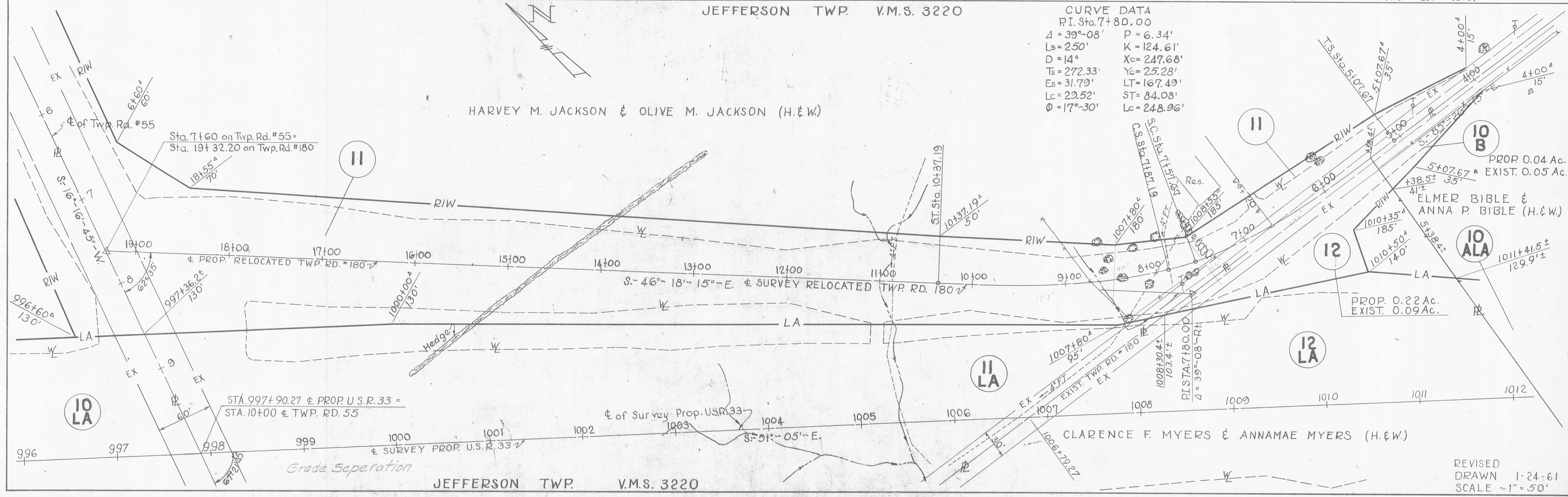


CURVE DATA
P.I. Sta. 0+33.56
 $\Delta = 8^{\circ}-42'-30''$ Rt.
D = 2^{\circ}-00'
T = 218.13'
R = 2864.79'

E = 8.29'
L = 435.42'
P.C. Sta. = 1+83.73
M.P. Sta. = 0+33.98
P.T. Sta. = 2+51.69

CURVE DATA
P.I. Sta. 14+57.21
 $\Delta = 5^{\circ}-09'-30''$ Rt.
D = 1^{\circ}-23'
R = 4141.87'
T = 186.59'

E = 4.20'
L = 372.89'
P.C. = Sta. 12+70.62
M.P. = Sta. 14+57.07
P.T. = Sta. 16+43.51



CURVE DATA
P.I. Sta. 7+80.00
 $\Delta = 39^{\circ}-08'$
Ls = 250'
D = 14^{\circ}
Ts = 272.33'
Es = 31.79'
Lc = 29.52'
 $\theta = 17^{\circ}-30'$

P = 6.34'
K = 124.61'
Xc = 247.68'
Yc = 25.28'
LT = 167.49'
ST = 84.08'
Lc = 248.96'

REVISED
DRAWN 1-24-61
SCALE ~1" = 50'

JEFFERSON TWP. V.M.S. 3220

PROP. 0.15 Ac.
EXIST. NONE

RUSSELL R. EDE

IRENE STEVENS

FED. RD. DIVISION	STATE	PROJECT
2	OHIO	1961

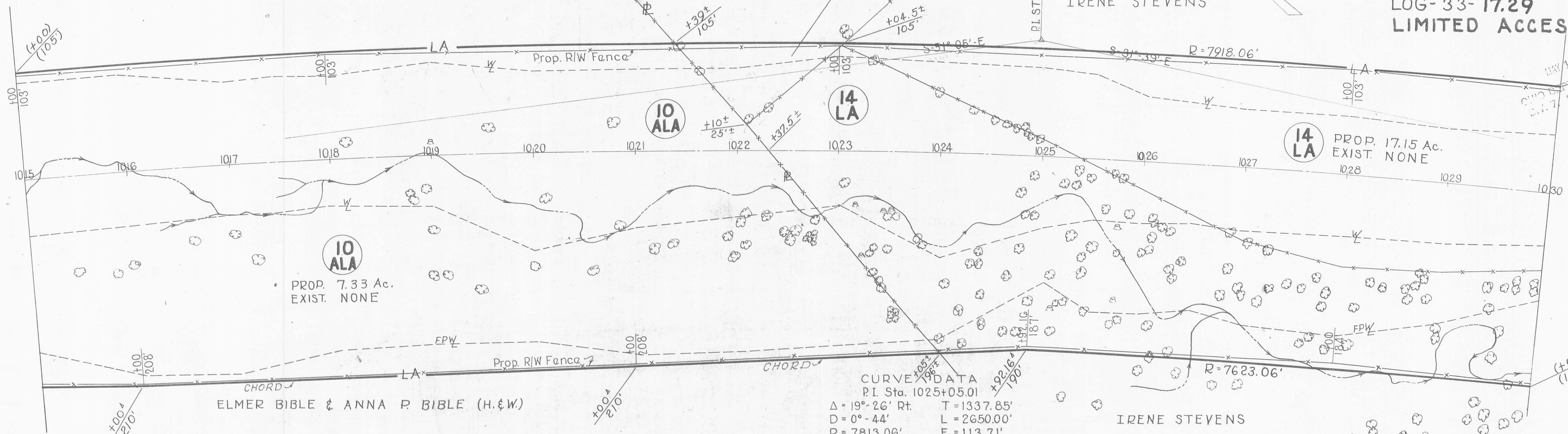
335
345

LOGAN COUNTY

LOG-33-17.29

LIMITED ACCESS ISSUED

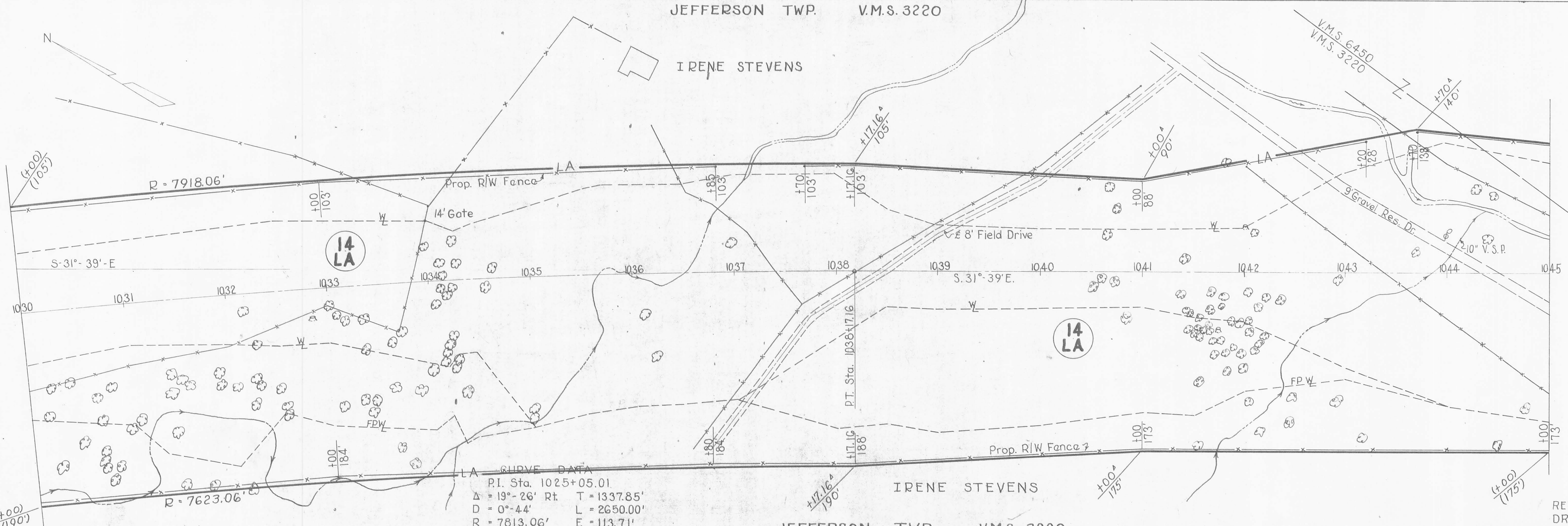
ELMER BIBLE & ANNA P. BIBLE (H.&W.)



JEFFERSON TWP. V.M.S. 3220

JEFFERSON TWP. V.M.S. 3220

IRENE STEVENS



JEFFERSON TWP. V.M.S. 3220

REVISED
DRAWN 1-24-61
SCALE ~ 1" = 50'

FED. RD. DIVISION	STATE	PROJECT	336 345
2	OHIO	1961	

LOGAN COUNTY LOG-33-17.29

OWEN V. WOODRUFF & MAGGIE WOODRUFF

OWEN V. WOODRUFF & MAGGIE WOODRUFF

FRED J. MOLITOR & JO E. MOLITOR (H. & W.)

Sta. 23+54.15 Exist. Co. Rd. #10
Sta. 1054+43.61 Prop. U.S.R. 33

PROP. 3.26 Ac.
EXIST. 0.23 Ac.

SEE SHEET 15

PROP. 2.71 Ac.
EXIST. 0.14 Ac.

PROP. 0.50 Ac.
EXIST. 0.09 Ac.

PROP. 0.03 Ac.
EXIST. NONE

JOHN M. HERREN & DORIS HERREN (H. & W.)

IRENE STEVENS
V.M.S. 3220

STONE FOUND 1.5' LT. OF CO. RD. #10 STATION 7+55.10

OWEN V. WOODRUFF & MAGGIE WOODRUFF

HARRY D. SNYDER & MARIA JANE SNYDER

PROP. 0.03 Ac.
EXIST. NONE

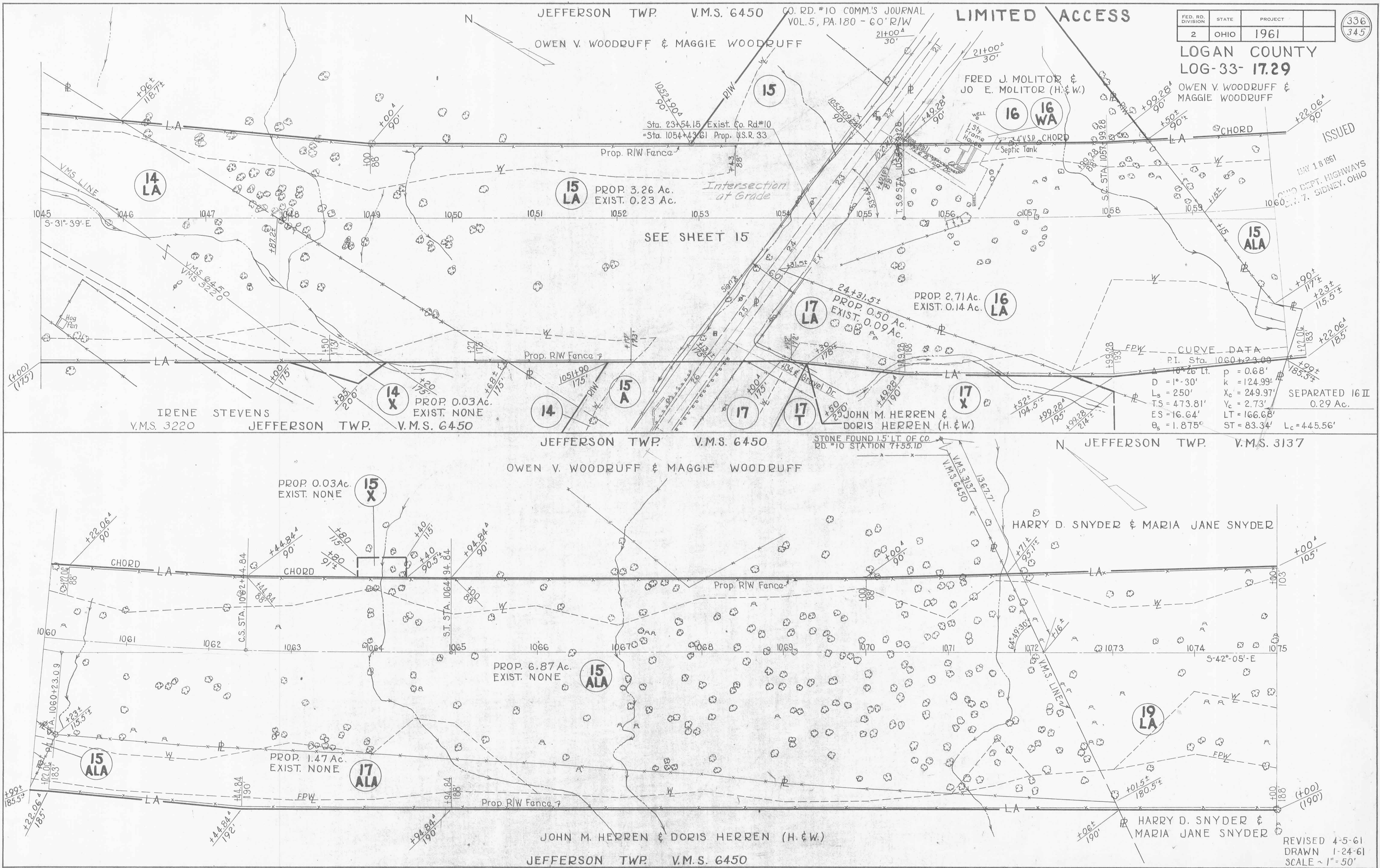
PROP. 6.87 Ac.
EXIST. NONE

PROP. 1.47 Ac.
EXIST. NONE

JOHN M. HERREN & DORIS HERREN (H. & W.)

HARRY D. SNYDER & MARIA JANE SNYDER

REVISED 4-5-61
DRAWN 1-24-61
SCALE ~ 1" = 50'



FED. RD. DIVISION	STATE	PROJECT
2	OHIO	1961

337
345

LOGAN COUNTY
LOG-33-17.29

ISSUED

29171.69
19+61.19
10+10.38

MAY 18 1961
OHIO DEPT. HIGHWAYS
DIV. 7, SIDNEY, OHIO

472
222
178

VMS 6450
VMS LINE
VMS 3220

JOHN M. HERREN

PROP. 0.59 Ac.
EXIST. NONE

17 X

FRED J. MOLITOR &
JO E. MOLITOR (H. & W.)

16 LA

OWEN V. WOODRUFF &
MAGGIE WOODRUFF

16 SEPARATION I 0.63 Ac.

PROP. 0.69 Ac.
EXIST. 0.18 Ac.

16

PROP. 2.12 Ac.
EXIST. NONE

17 TS

PROP. 1.05 Ac.
EXIST. 0.51 Ac.

17

PROP. 0.14 Ac.
EXIST. 0.09 Ac.

15 A

PROP. 0.66 Ac.
EXIST. 0.41 Ac.
IRENE STEVENS

14

PROP. 1.27 Ac.
EXIST. 0.68 Ac.

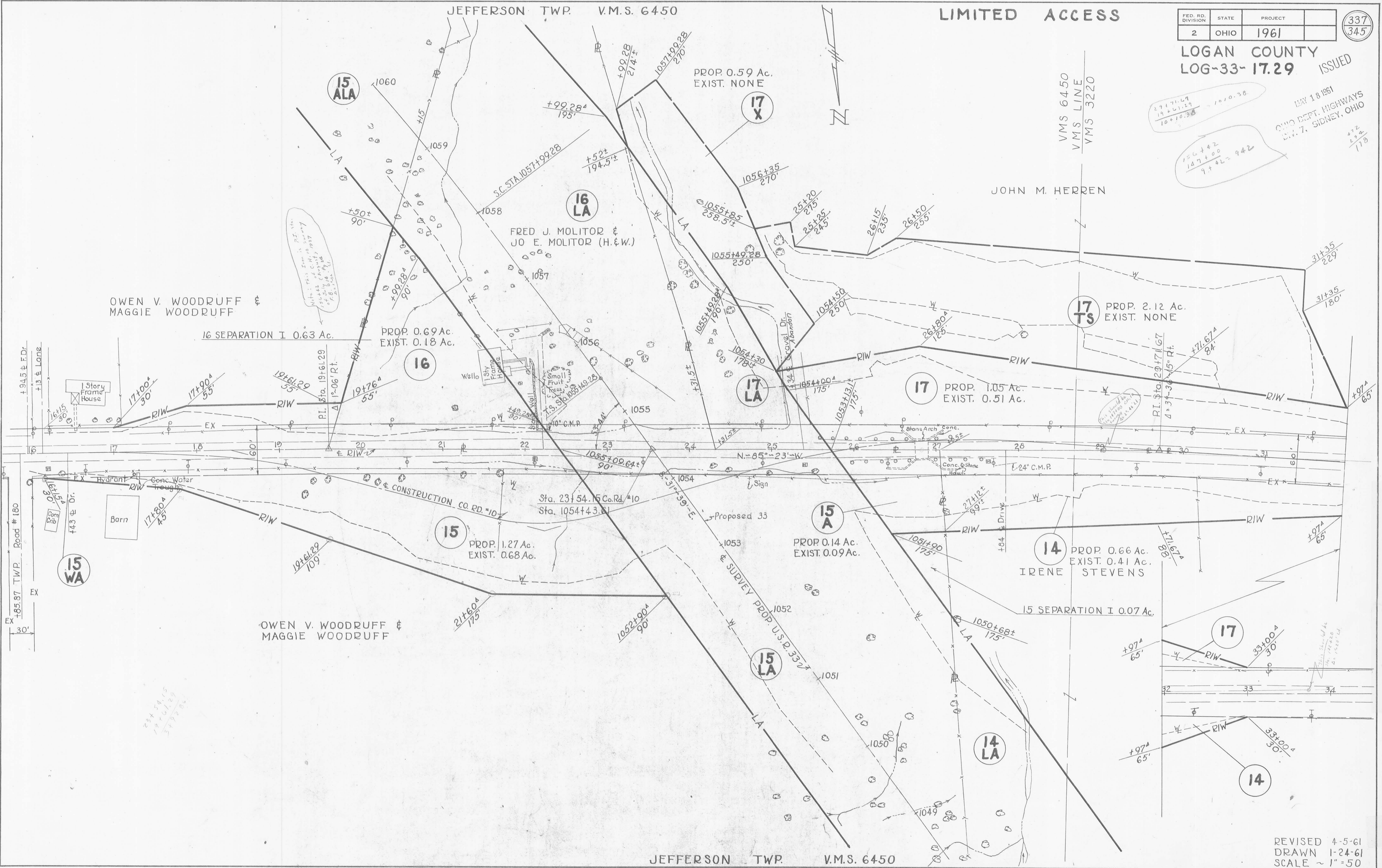
15

OWEN V. WOODRUFF &
MAGGIE WOODRUFF

15 SEPARATION I 0.07 Ac.

17

14



FED. RD. DIVISION	STATE	PROJECT	
2	OHIO	1961	

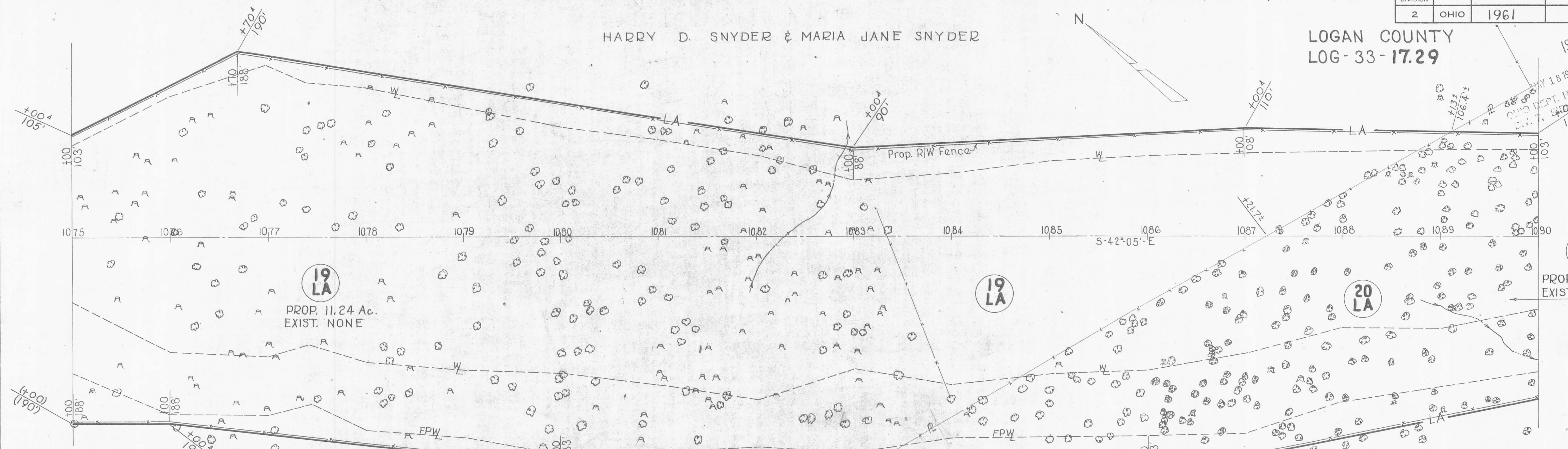
338
345

HARRY D. SNYDER & MARIA JANE SNYDER

LOGAN COUNTY
LOG-33-17.29

ISSUED

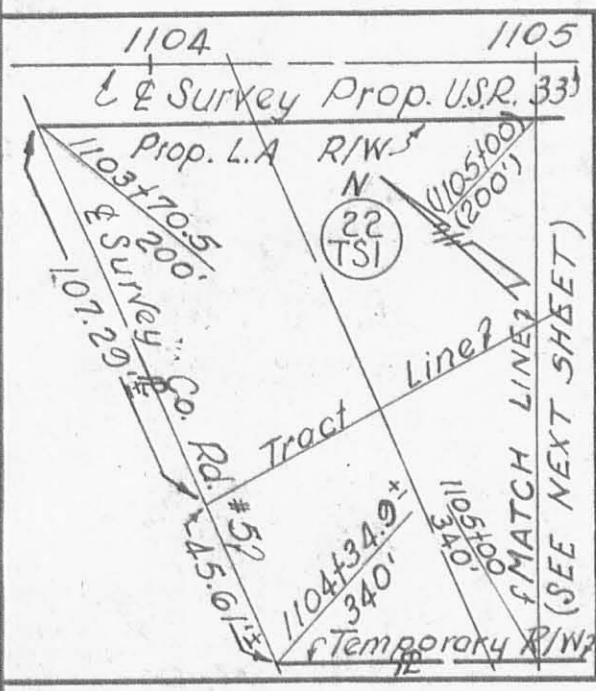
APR 18 1961
OHIO DEPT. HIGHWAYS
COLUMBUS, OHIO



HARRY D. SNYDER & MARIA JANE SNYDER

JEFFERSON TWP. V.M.S. 3137

FRANCIS HARRINGTON & MARY HARRINGTON (H. & W.)
JEFFERSON TWP. V.M.S. 3137

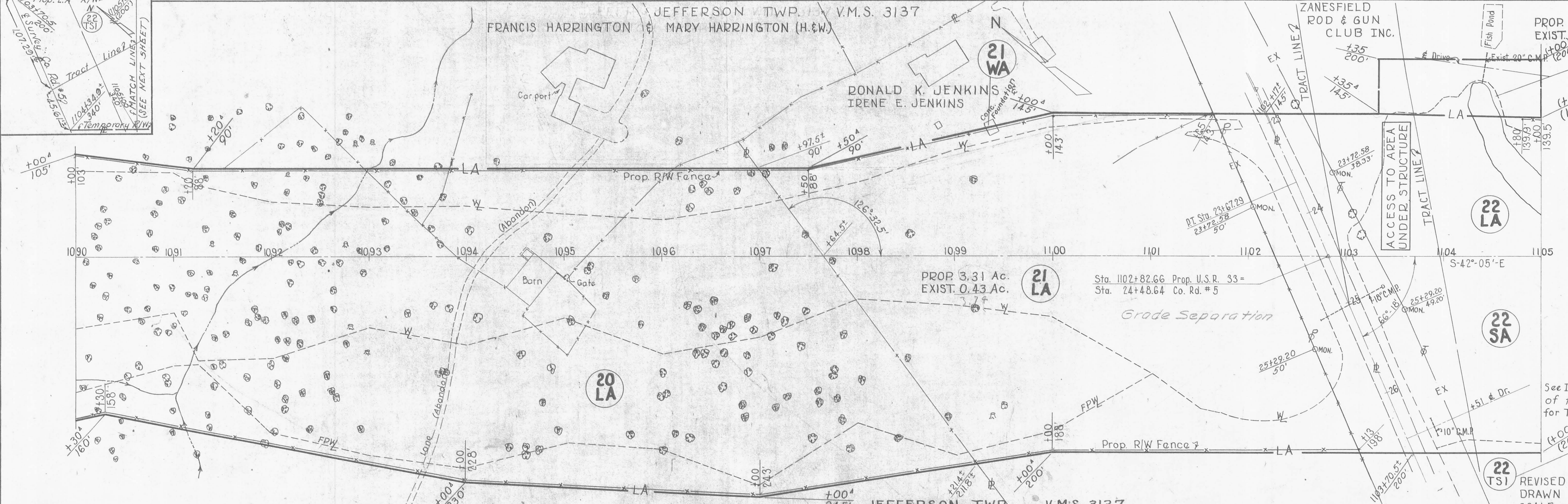


FRANCIS HARRINGTON & MARY HARRINGTON (H. & W.)

RONALD K. JENKINS
IRENE E. JENKINS

ZANESFIELD
ROD & GUN
CLUB INC.

PROP. 0.22 Ac.
EXIST. NONE



JEFFERSON TWP. V.M.S. 3137

REVISED 4-20-61
DRAWN 3-17-61
SCALE ~ 1" = 50'

CURVE DATA
 P.I. Sta. 1121+47.09
 $\Delta = 31^{\circ}-25'$ Lt. $T = 1272.17'$
 $D = 1^{\circ}-16'$ $L = 2480.26'$
 $R = 4523.35'$ $E = 175.49'$

JEFFERSON TWP. V.M.S. 3137

LIMITED ACCESS

FED. RD. DIVISION	STATE	PROJECT
2	OHIO	1961

339
345

LOGAN COUNTY
 LOG-33-17.29

MARY EDNA CUSHMAN, ET AL

CURTIS BLACK

PROP. 0.16 Ac.
 EXIST. NONE

23 XI

PROP. 5.12 Ac.
 EXIST. 0.39 Ac.

22 LA

23 LA

PROP. 0.11 Ac.
 EXIST. NONE

23 X2

PROP. 1.08 Ac.
 EXIST. 0.17 Ac.

22 TSI

JEFFERSON TWP. V.M.S. 3137

CURTIS BLACK

19.02 Ac.
 PROP. 19.12 Ac.
 EXIST. NONE

23 LA

Subtract 0.10 Ac. which is a part
 of 0.51 Ac. of Curtis Black.

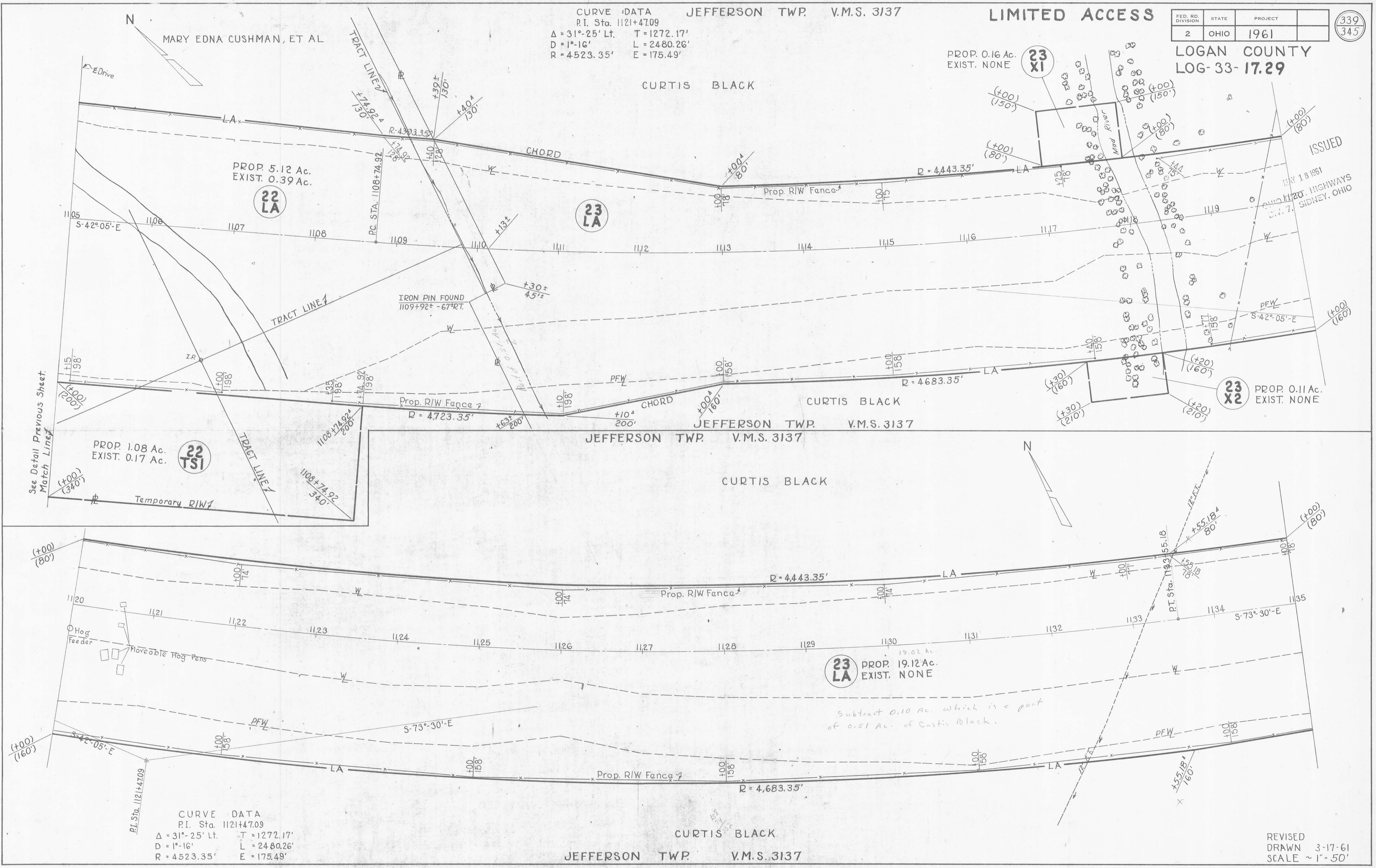
CURVE DATA
 P.I. Sta. 1121+47.09
 $\Delta = 31^{\circ}-25'$ Lt. $T = 1272.17'$
 $D = 1^{\circ}-16'$ $L = 2480.26'$
 $R = 4523.35'$ $E = 175.49'$

JEFFERSON TWP. V.M.S. 3137

CURTIS BLACK

REVISED
 DRAWN 3-17-61
 SCALE ~ 1" = 50'

R/W PLAN - STA. 1105+00 TO STA. 1135+00 - SHEET 17 OF 23



JEFFERSON TWP. V.M.S. 3137

LIMITED ACCESS

FED. RD. DIVISION	STATE	PROJECT
2	OHIO	1961

340
345

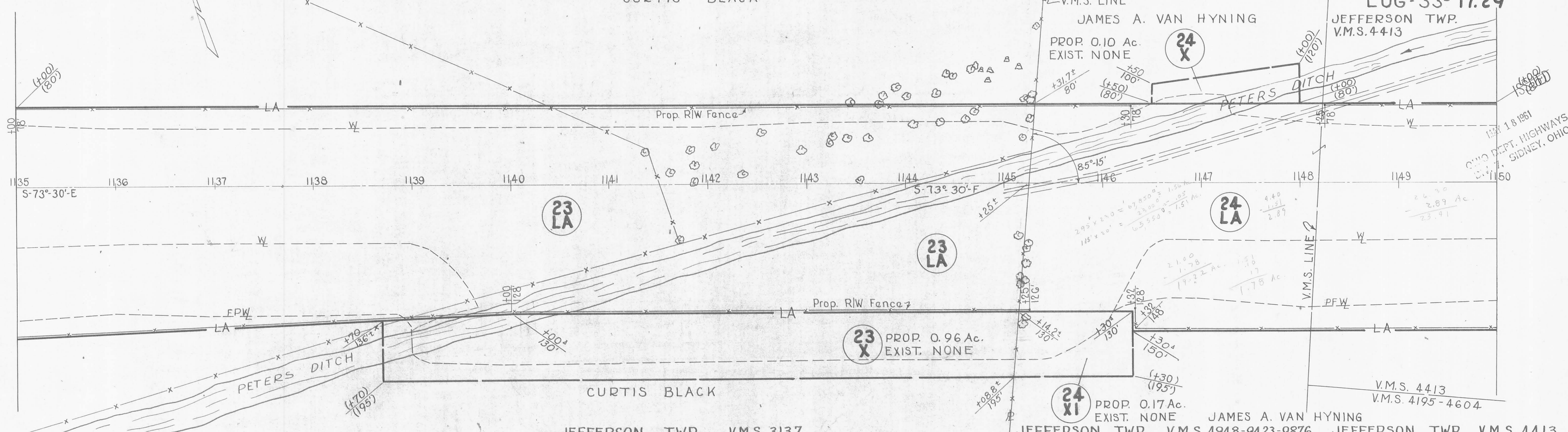
JEFFERSON TWP.
V.M.S. 4948 - 9423-9876

LOGAN COUNTY
LOG-33-17.29

JEFFERSON TWP.
V.M.S. 4413

JAMES A. VAN HYNING
PROP. 0.10 Ac.
EXIST. NONE

CURTIS BLACK

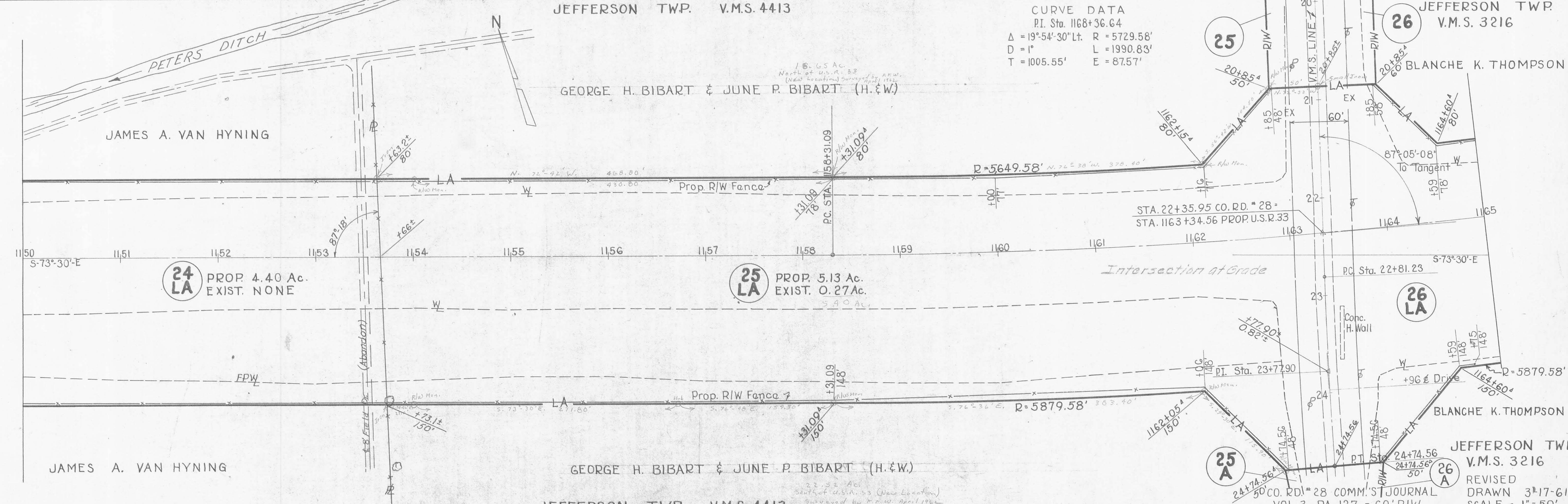


JEFFERSON TWP. V.M.S. 3137
JEFFERSON TWP. V.M.S. 4413

JEFFERSON TWP. V.M.S. 4948-9423-9876
JEFFERSON TWP. V.M.S. 4413

CURVE DATA
P.I. Sta. 1168+36.64
 $\Delta = 19^\circ 54' 30''$ Lt. R = 5729.58'
D = 1" L = 1990.83'
T = 1005.55' E = 87.57'

JEFFERSON TWP.
V.M.S. 3216



JAMES A. VAN HYNING

GEORGE H. BIBART & JUNE P. BIBART (H. & W.)

JEFFERSON TWP.
V.M.S. 3216

JEFFERSON TWP. V.M.S. 4413

25 A

26 A

REVISION
DRAWN 3-17-61
SCALE 1" = 50'

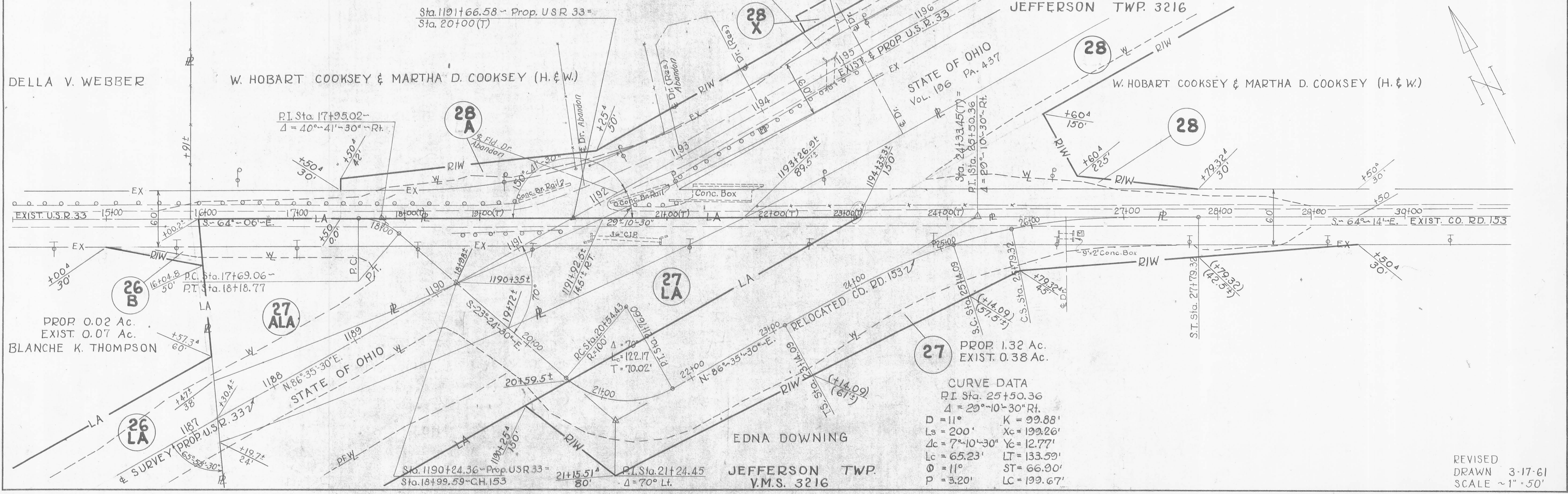
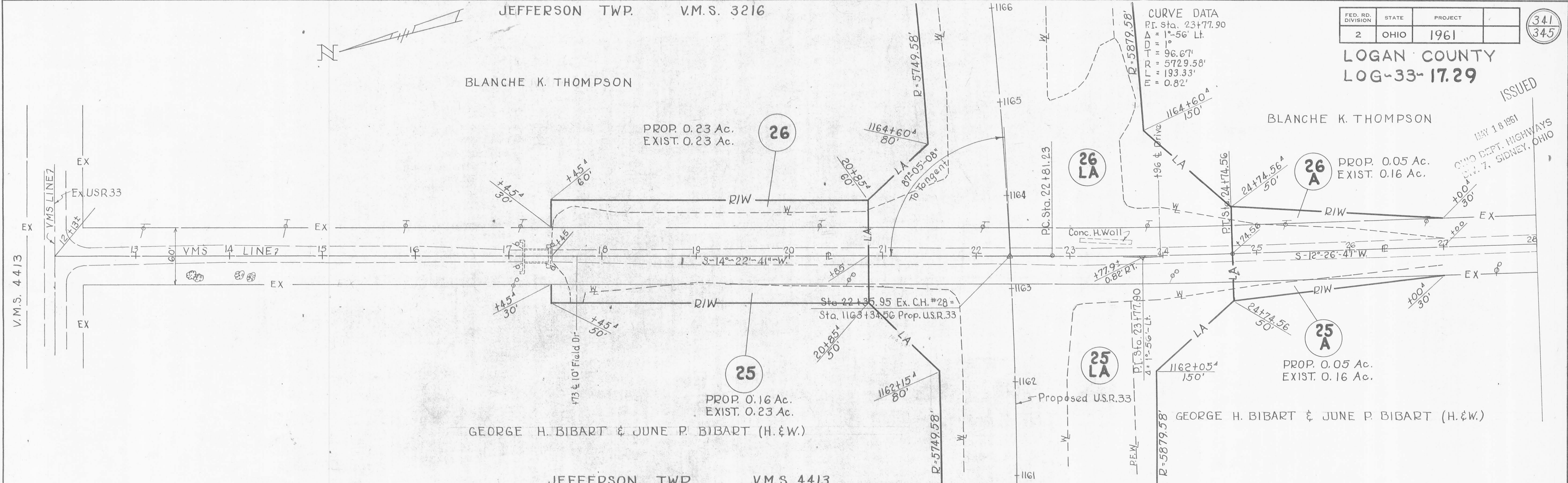
FED. RD. DIVISION	STATE	PROJECT	
2	OHIO	1961	

341
345

LOGAN COUNTY
LOG-33-17.29

ISSUED

MAY 18 1961
OHIO DEPT. HIGHWAYS
DIV. 7, SIDNEY, OHIO



CURVE DATA
 P.I. Sta. 25+50.36
 $\Delta = 20^\circ-10'-30''$ Rt.
 $D = 11'$ $K = 99.88'$
 $L_s = 200'$ $X_c = 192.26'$
 $\Delta c = 7^\circ-10'-30''$ $Y_c = 12.77'$
 $L_c = 65.23'$ $LT = 133.59'$
 $\theta = 11'$ $ST = 66.90'$
 $P = 3.20'$ $LC = 199.67'$

REVISED
DRAWN 3-17-61
SCALE ~1"=50'

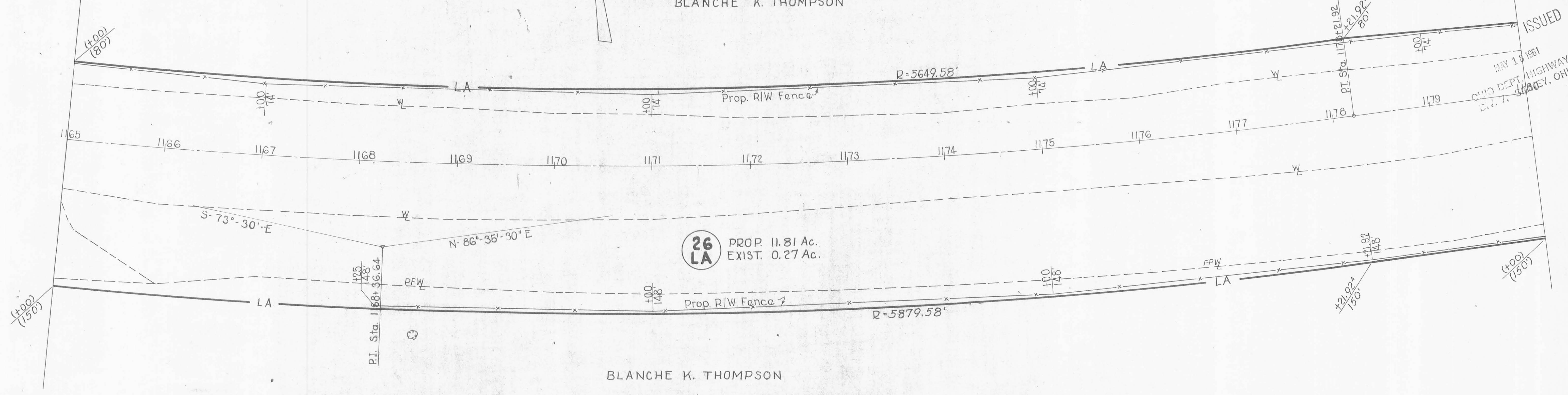
CURVE DATA JEFFERSON TWP. V.M.S. 3216
 P.I. Sta. 1168+36.64
 $\Delta = 19^{\circ}54'30''$ $R = 5729.58'$
 $D = 1^{\circ}$ $L = 1990.83'$
 $T = 1005.55'$ $E = 87.57'$

FED. RD. DIVISION	STATE	PROJECT	
2	OHIO	1961	

LOGAN COUNTY
 LOG-33-17.29

342
 345

BLANCHE K. THOMPSON

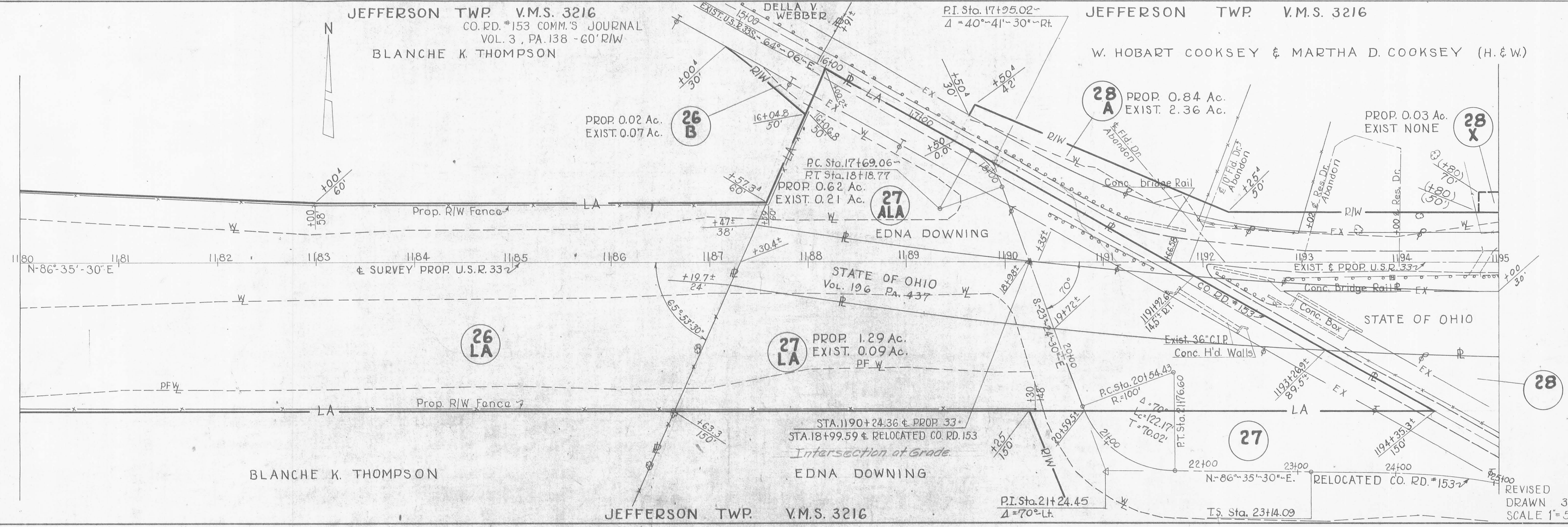


BLANCHE K. THOMPSON

JEFFERSON TWP. V.M.S. 3216

JEFFERSON TWP. V.M.S. 3216
 CO. RD. #153 COMM.'S JOURNAL
 VOL. 3, PA. 138 - 60' R/W
 BLANCHE K. THOMPSON

JEFFERSON TWP. V.M.S. 3216
 W. HOBART COOKSEY & MARTHA D. COOKSEY (H. & W.)



BLANCHE K. THOMPSON

JEFFERSON TWP. V.M.S. 3216

REVISED
 DRAWN 3-17-61
 SCALE 1"=50'

R/W PLAN - STA. 1165+00 TO STA. 1195+00 - SHEET 20 OF 23

S. R. BRADFORD &
FLORA MAE BRADFORD
(H. & W.)

JEFFERSON TWP.

V.M.S. 4661

FED. RD. DIVISION	STATE	PROJECT
2	OHIO	1961

344
345

LOGAN COUNTY
LOG-33-17.29

ISSUED

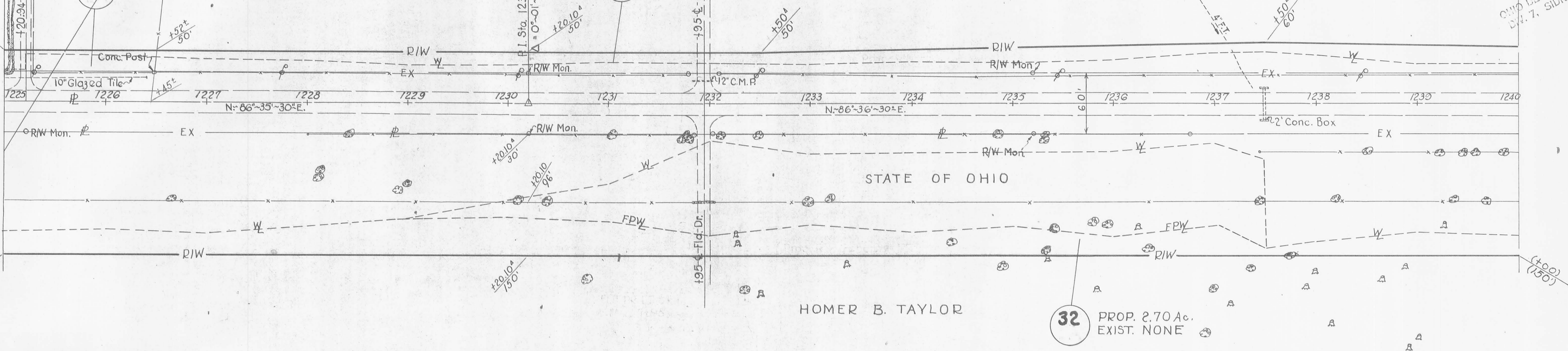
MAY 18 1961
OHIO DEPT. HIGHWAYS
DIV. 7, SIDNEY, OHIO

HOMER B. TAYLOR

PROP. 0.94 Ac.
EXIST. 2.72 Ac.

32
A

31



HOMER B. TAYLOR

32 PROP. 2.70 Ac.
EXIST. NONE

JEFFERSON TWP.

V.M.S. 4661

JEFFERSON TWP.

V.M.S. 10426 - 10427 - 11041

JEFFERSON TWP. V.M.S. 4661

HOMER B. TAYLOR

PROP. 0.009 Ac.
EXIST. NONE

32
X

PROP. 0.003 Ac.
EXIST. NONE

28
X2

W. HOBART COOKSEY &
MARTHA D. COOKSEY (H. & W.)

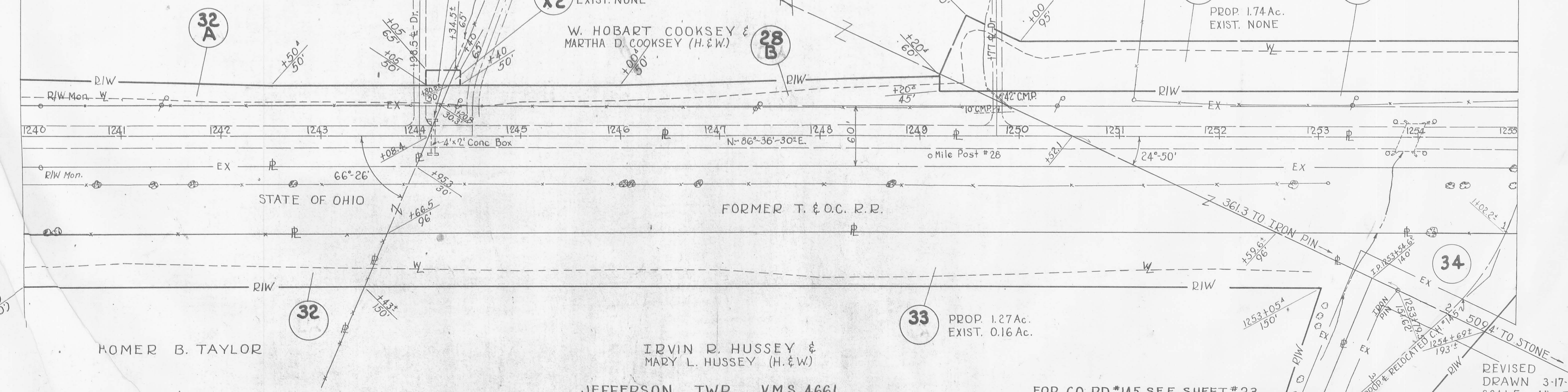
28
B

PROP. 0.79 Ac.
EXIST. 1.41 Ac.

28
B

PROP. 1.74 Ac.
EXIST. NONE

28
X1



HOMER B. TAYLOR

IRVIN D. HUSSEY &
MARY L. HUSSEY (H. & W.)

33 PROP. 1.27 Ac.
EXIST. 0.16 Ac.

34

JEFFERSON TWP. V.M.S. 4661

FOR CO. RD. #145 SEE SHEET #23

REVISED
DRAWN 3-17-61
SCALE ~ 1" = 50'

R/W PLAN - STA. 1225+00 TO STA. 1255+00 - SHEET 22 OF 23

F.D. RD. DIVISION	STATE	PROJECT
2	OHIO	1961

345
345

LOGAN COUNTY
LOG-33-17.29
JEFFERSON TWP.
V.M.S. 9371 - 12174

ISSUED
MAY 18 1961
CIV. DEPT. HIGHWAYS
DIV. 7, SIDNEY, OHIO

KENNETH W. KNOCH
PROP. 0.04 Ac.
EXIST. NONE

35
PROP. 0.24 Ac.
EXIST. 0.22 Ac.

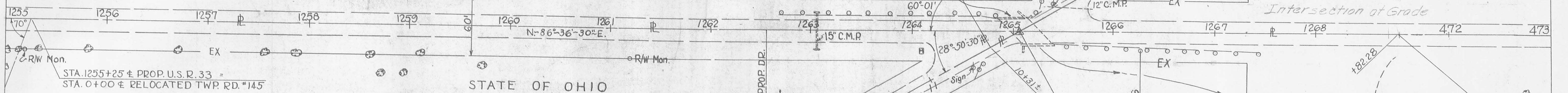
W. HOBART COOKSEY

28
XI

28
B

JAMES CHARLES SMITH & MARY SMITH
(H & W)
PROP. 0.40 Ac.
EXIST. 0.46 Ac.

36



STATE OF OHIO

STA. 1255+25 ± PROP. U.S.R. 33 =
STA. 0+00 ± RELOCATED TWP. RD. #145

Intersection of Grade

OTTER CREEK

34
WILBUR CAMPBELL
PROP. 2.48 Ac.
EXIST. 0.86 Ac.

JEFFERSON TWP.
V.M.S. 10426 - 10427 - 11041

CO. RD #145 COMM'S JOURNAL
VOL. 8 - PA. 67 - 40' R/W

34
PROP. 0.74 Ac.
EXIST. NONE

JEFFERSON TWP. V.M.S. 9371 - 12174

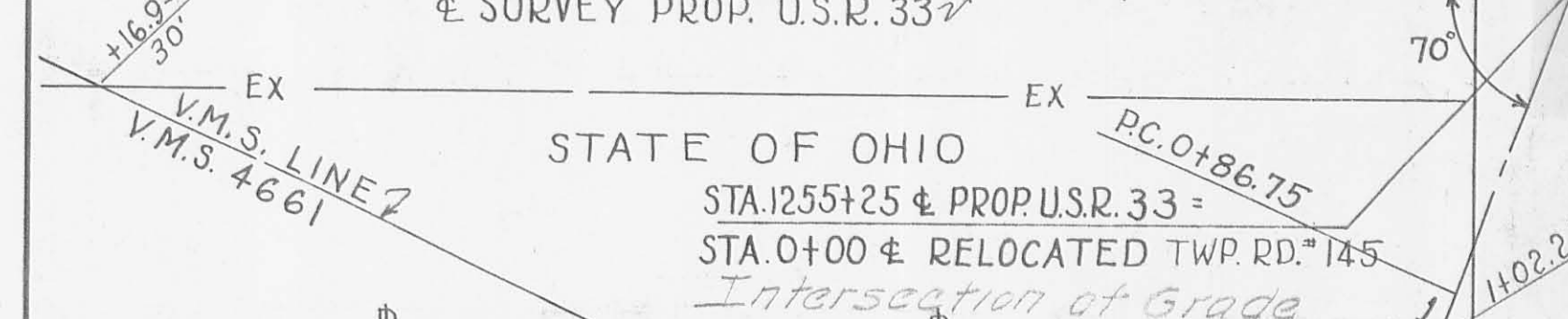
WILBUR CAMPBELL

JEFFERSON TWP. V.M.S. 9371 - 12174

V.M.S. 9371 - 12174 PERRY TWP

JEFFERSON TWP V.M.S. 10426, 10427, 11041

1251 1252 1253 1254



STATE OF OHIO
STA. 1255+25 ± PROP. U.S.R. 33 =
STA. 0+00 ± RELOCATED TWP. RD. #145
Intersection of Grade

33

34

IRVIN D. HUSSEY & MARY L. HUSSEY (H & W.)

33

34

WILBUR CAMPBELL

JEFFERSON TWP. V.M.S. 4661

REVISED
DRAWN 3-17-61
SCALE ~ 1" = 50'

CURVE DATA
 P.I. Sta. 483+10.84
 $\Delta = 11^\circ 02' 22''$ RT.
 $D = 0^\circ 20' R$
 $T = 1661.07'$
 $E = 80.07'$
 $L = 3311.83'$
 $R = 17188.74'$

Sta. 480+14 - USR 33 =
 Sta. 6+21.3 Approach
 See R/W Plan S.H. 235 Sec's. B (Pt.)
 C-1, & C-2 (Pt.) - Logan Co. 1948

CURVE DATA
 P.I. STA. 1+46.56
 $\Delta = 27^\circ 00'$ RT.
 $D = 23^\circ 00'$
 $L = 117.39'$
 $R = 249.11'$
 $T = 59.81'$

CURVE DATA
 P.I. STA. 4+06.29
 $\Delta = 25^\circ 15'$ LT.
 $D = 12^\circ 00'$
 $L = 210.42'$
 $R = 477.46'$
 $T = 106.94'$