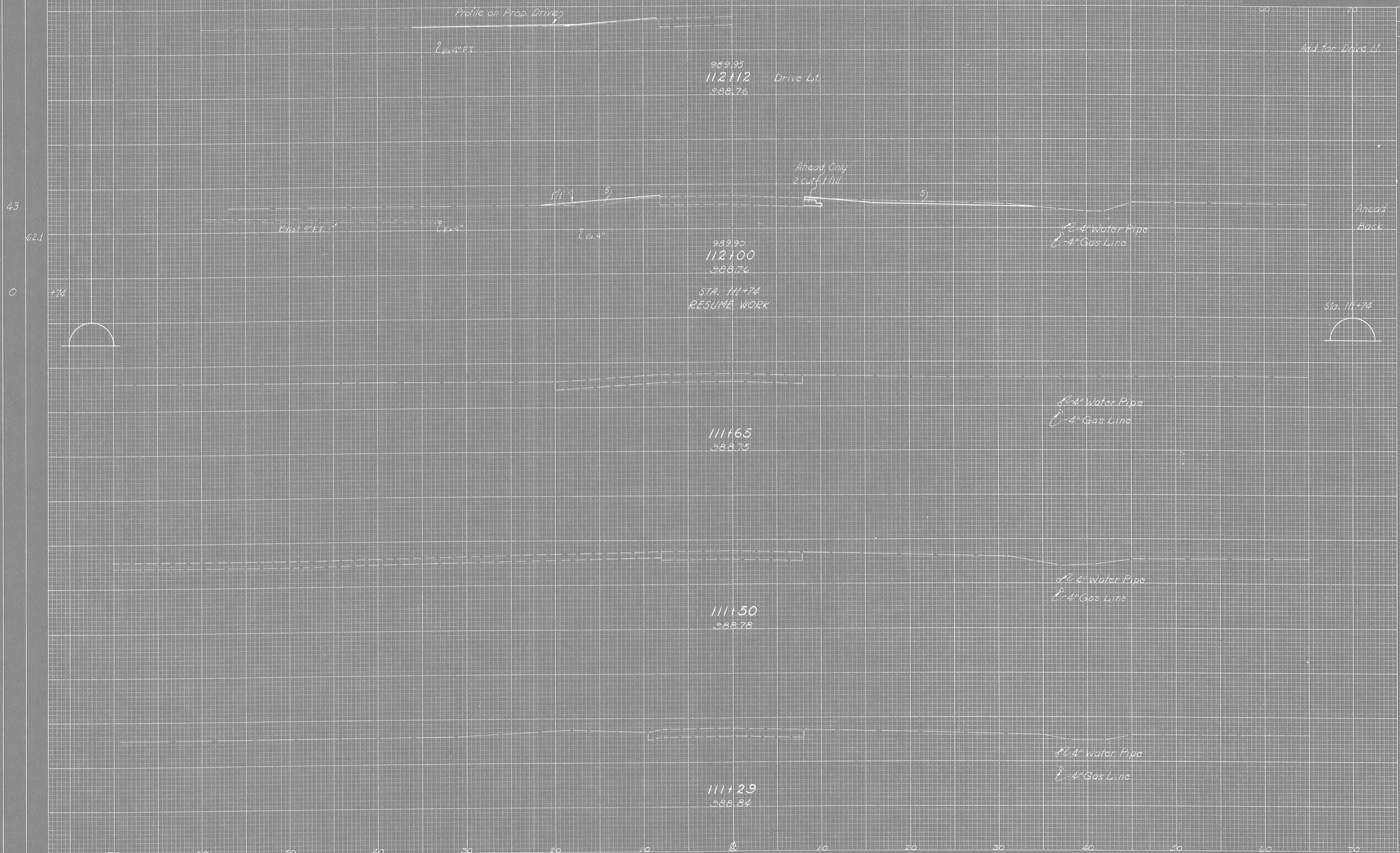


SEEDING
END WIDTH SO. YDS.

FED. RD. DIVISION	STATE	PROJECT
2	OHIO	

19
36

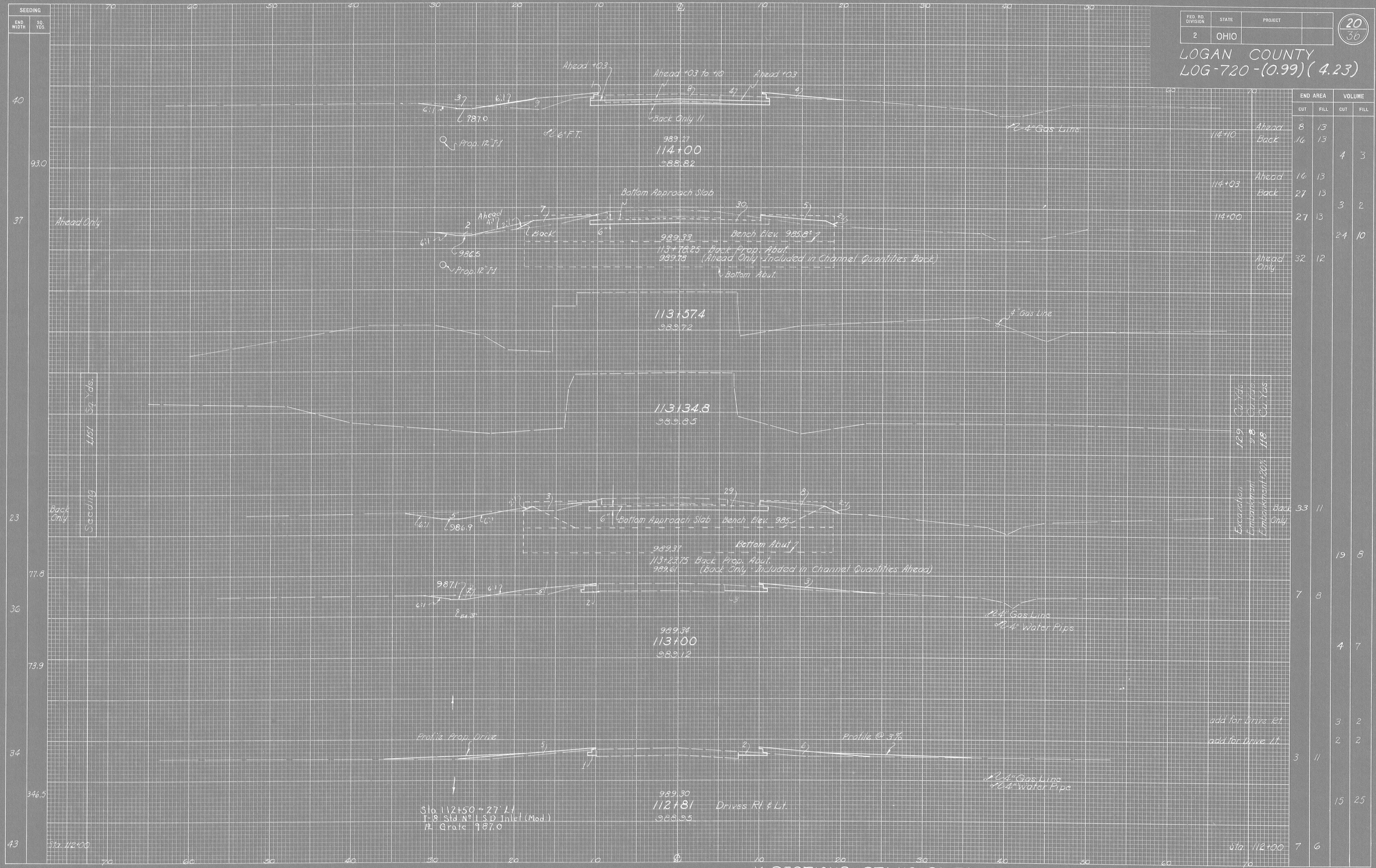
LOGAN COUNTY
LOG - 720 - (0.99) (4.23)



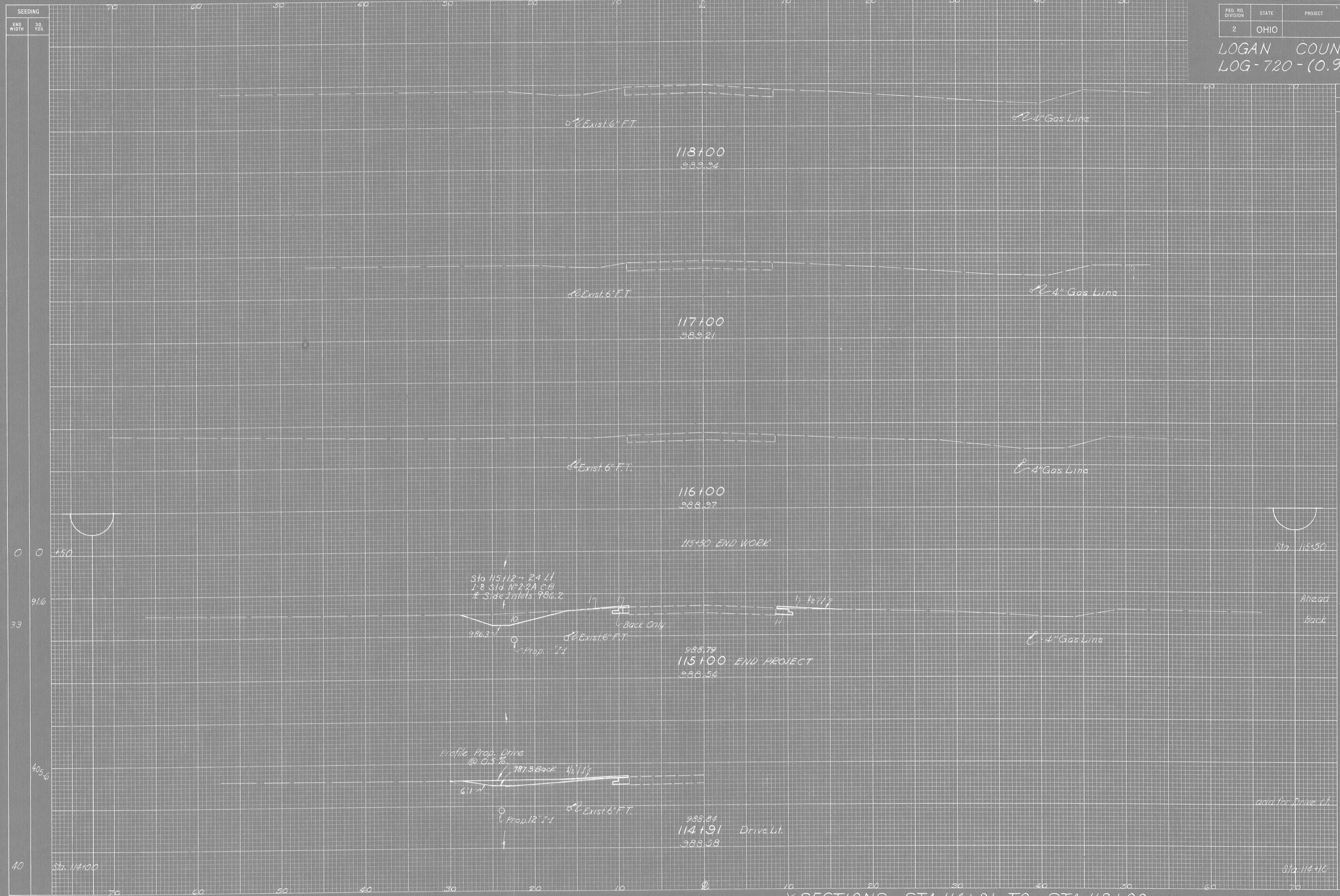
END AREA	VOLUME	
	CUT	FILL
	12	2
7	6	
5	5	
	2	2
0	0	

X-SECTIONS STA 111+29 TO STA 112+12

LOGAN COUNTY
LOG-720-(0.99)(4.23)



	END AREA		VOLUME	
	CUT	FILL	CUT	FILL
114+10	8	13		
114+03	16	13	4	3
114+00	16	13		
114+00	27	13	3	2
114+00	27	13	24	10
Ahead Only	32	12		
Excavation	109	0		
Embankment	98	0		
Embankment	118	0		
Back Only	33	11		
			19	8
	7	8		
			4	7
add for Drive Rt.			3	2
add for Drive Lt.			2	2
	3	11		
			15	25
Sta. 112+00	7	6		



END AREA		VOLUME	
CUT	FILL	CUT	FILL
0	0	0	0
9	2	9	2
10	2	10	2
12	2	12	2
33	25	33	25
2	8	2	8
8	13	8	13

X-SECTIONS STA 114+91 TO STA 118+00

PRINTED IN U. S. A.
ON GULF-TRADE CLOTH

SEEDING
END WIDTH SQ. YDS.

LOGAN COUNTY
LOG - 720 -(0.99) (4.23)

END AREA VOLUME
CUT FILL CUT FILL

ESTIMATED QUANTITIES
STATION Item B-19 Aggre. Base Item I-22 Subbase
Sq. Ft. Cu. Yds. Sq. Ft. Cu. Yds.

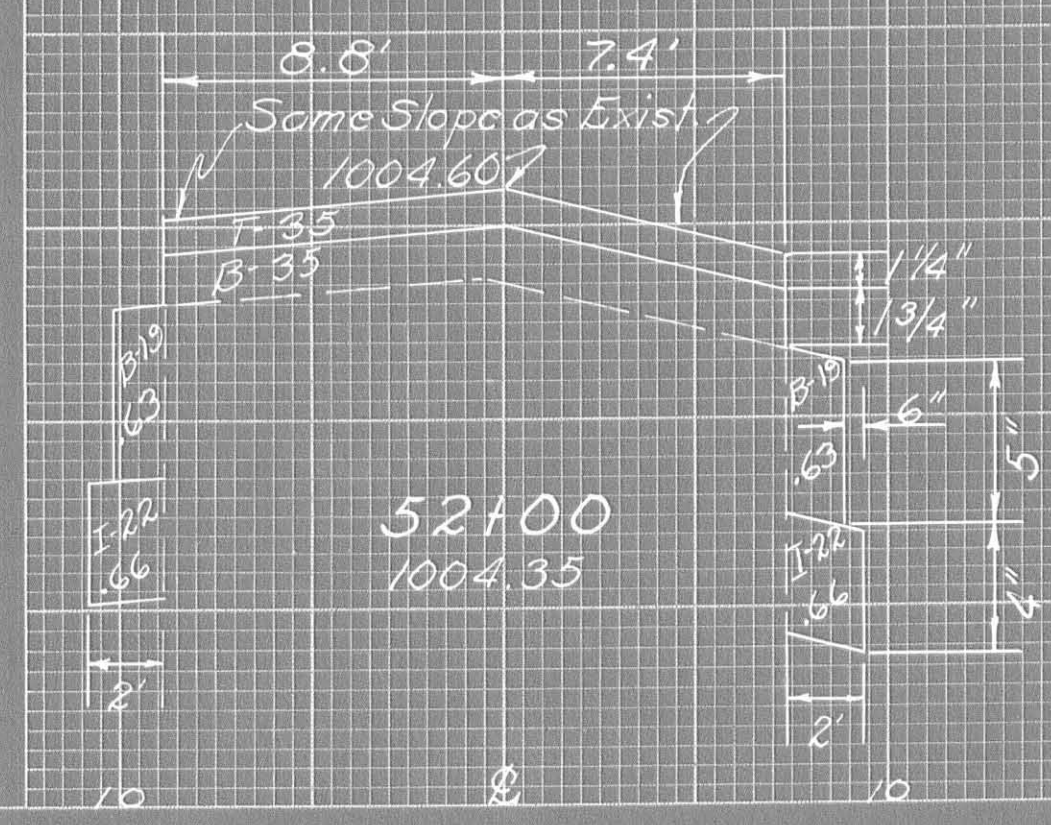
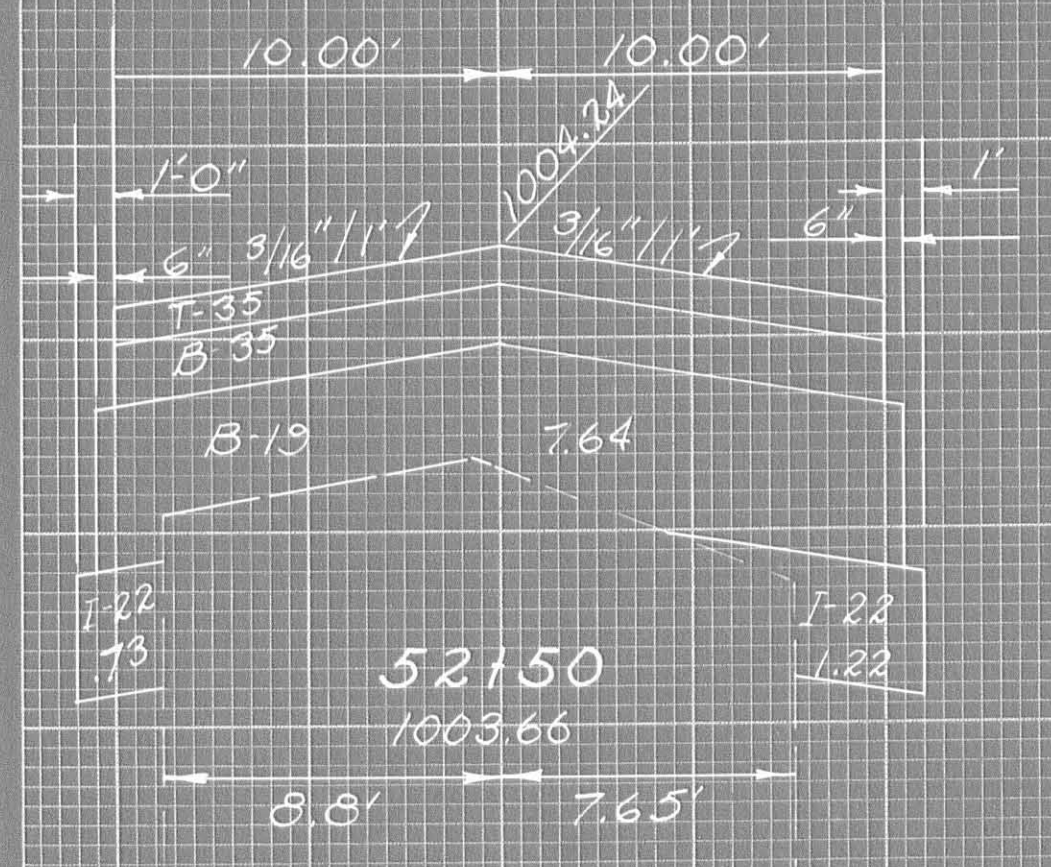
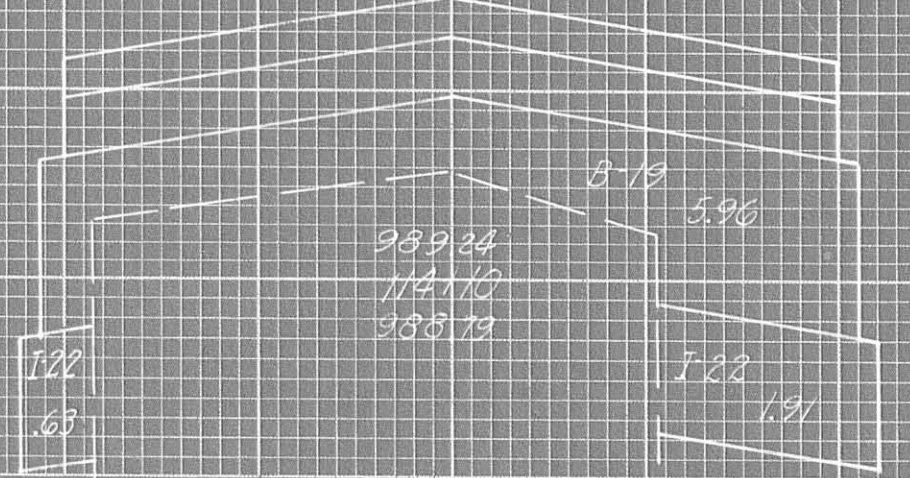
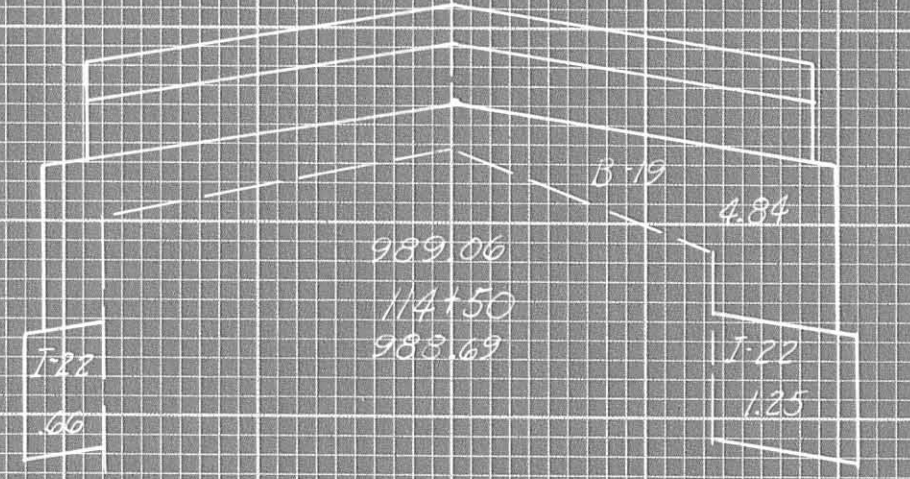
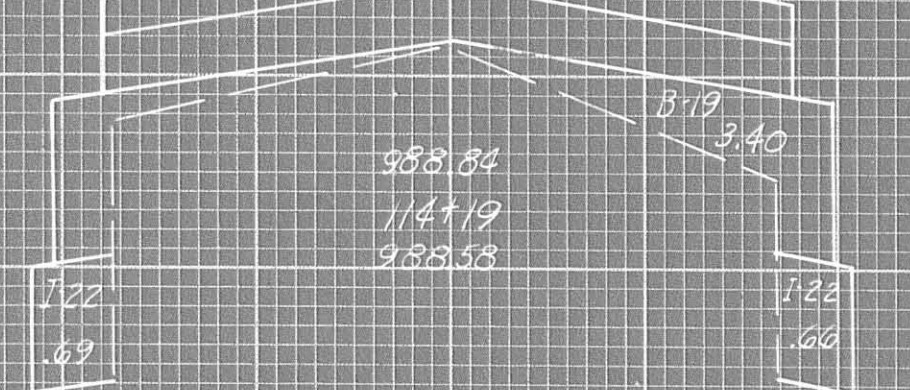
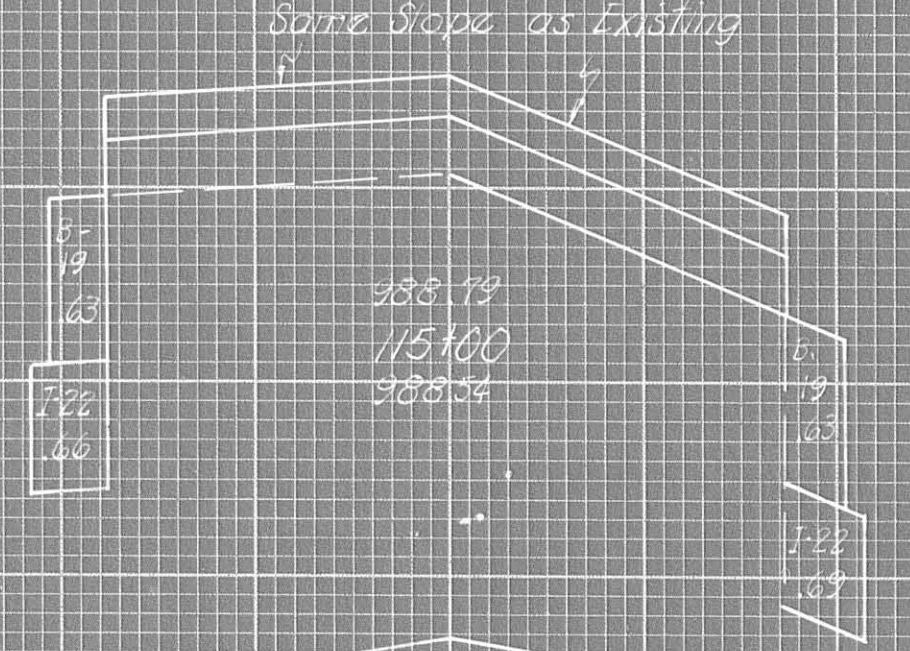
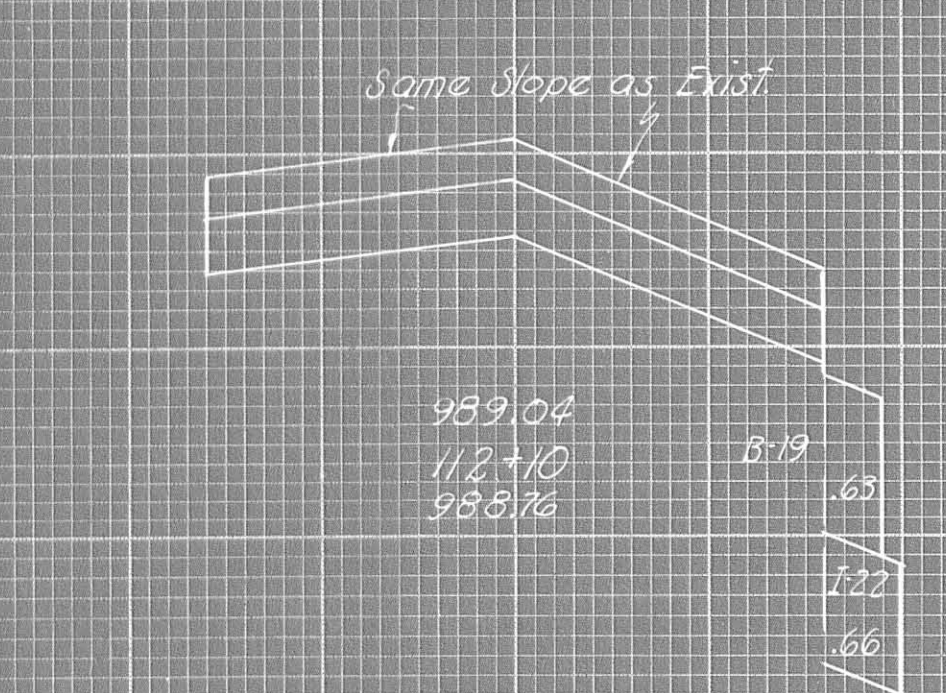
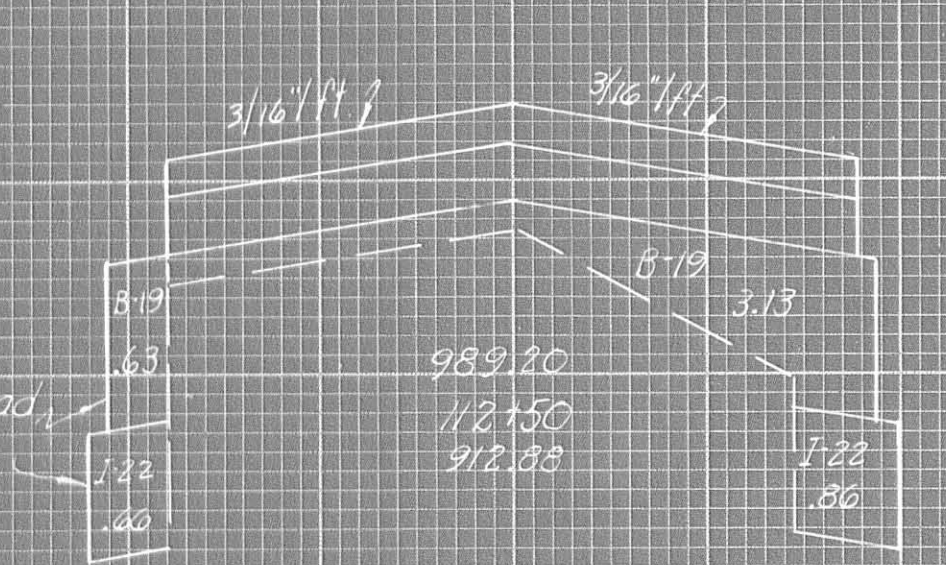
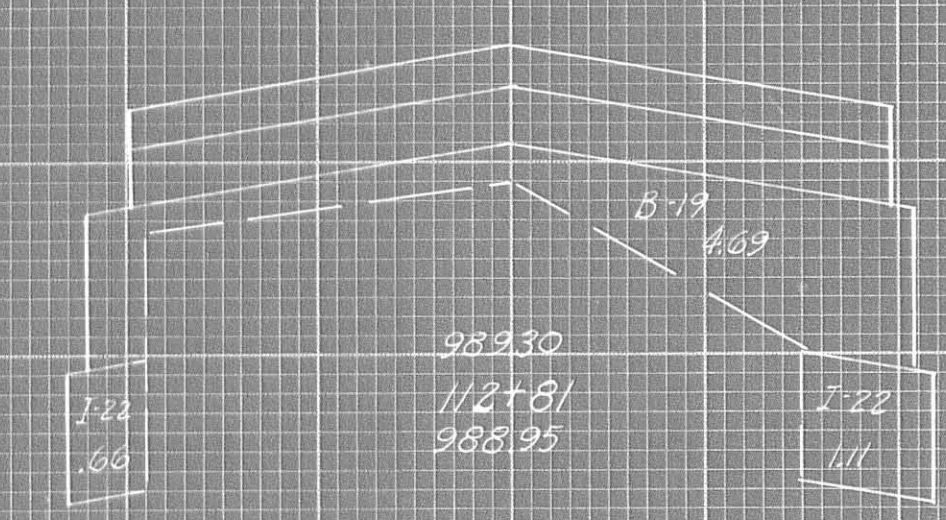
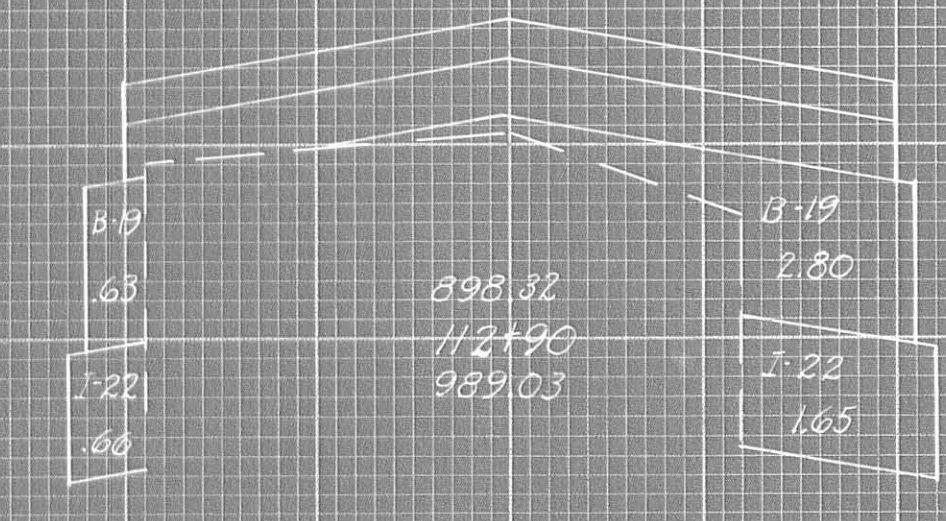
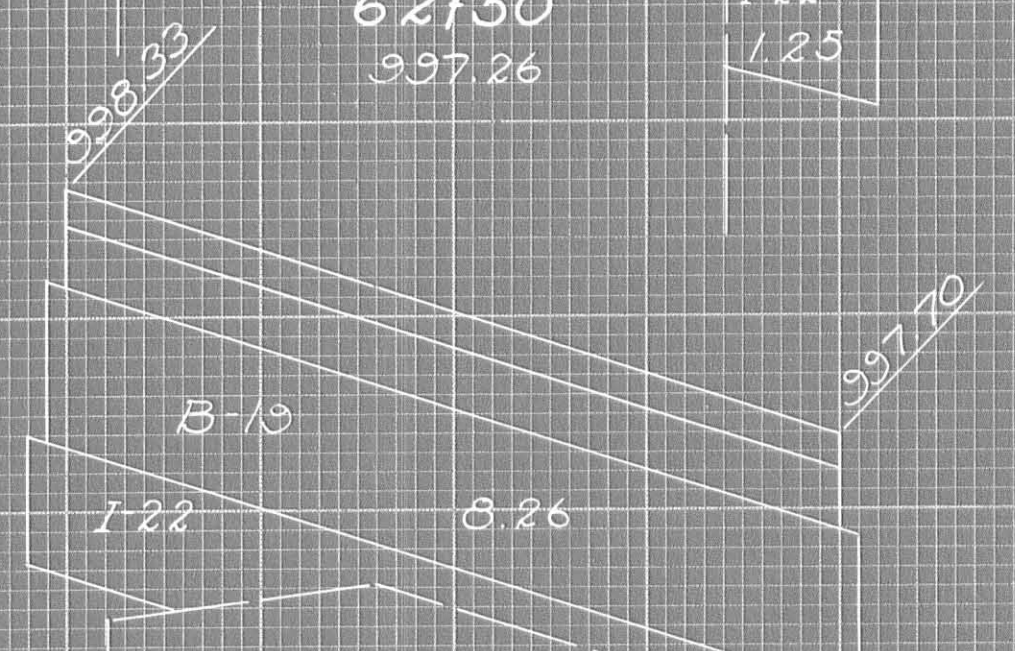
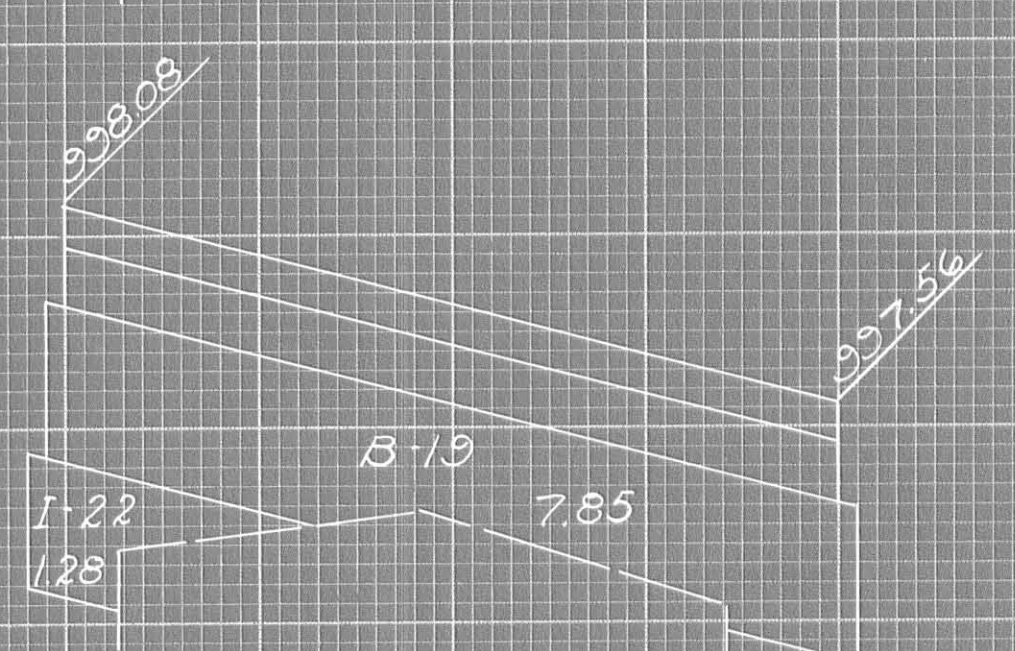
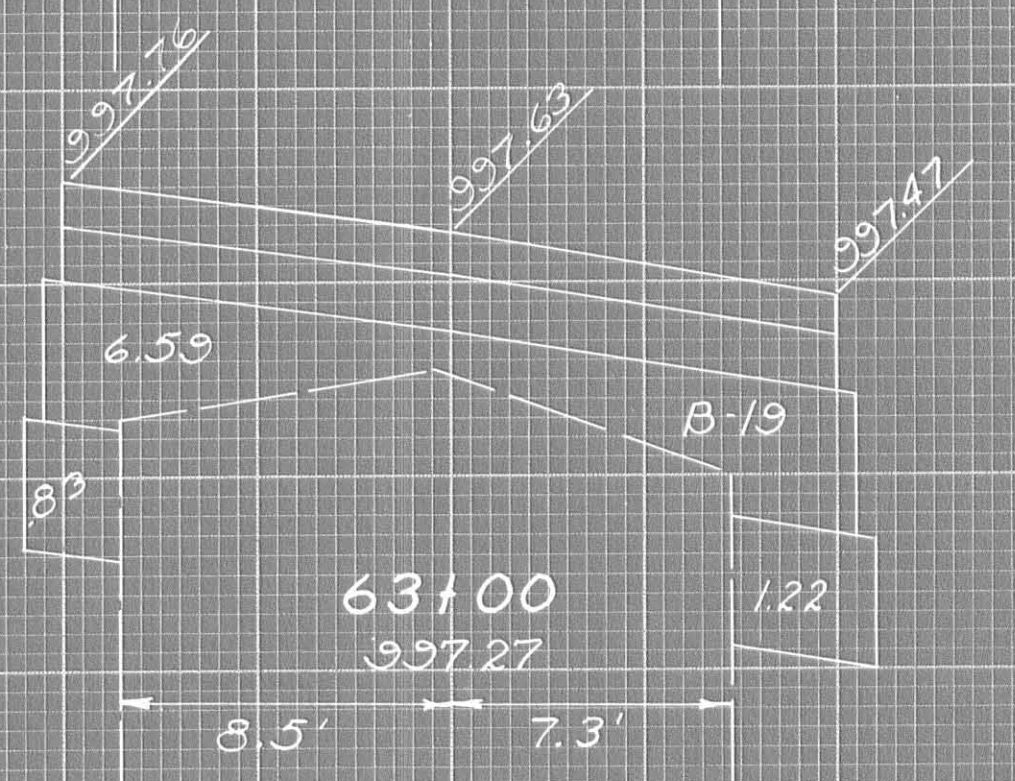
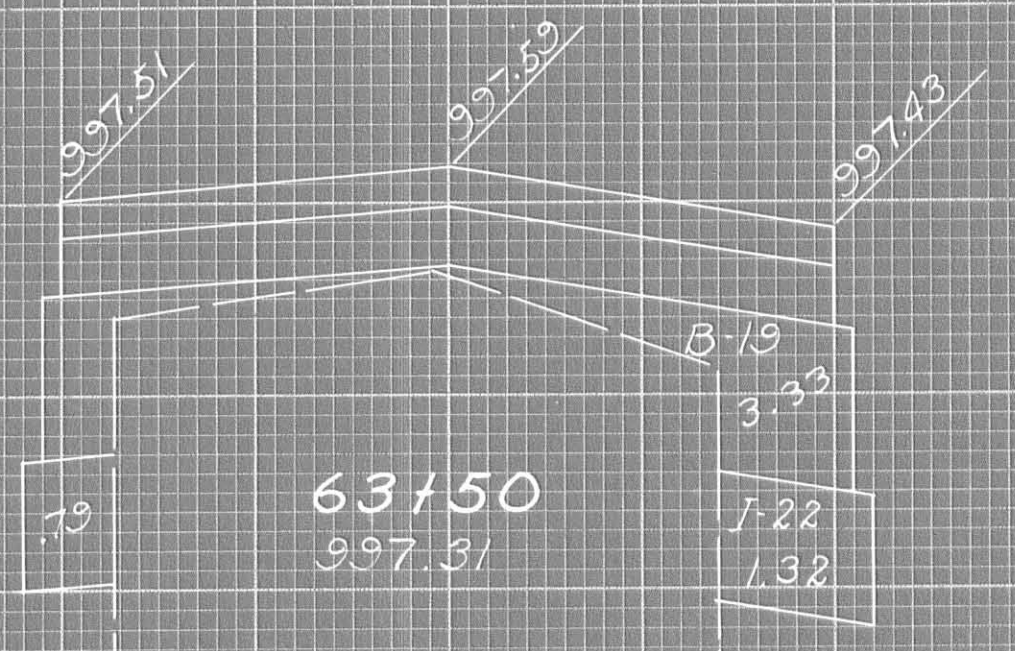
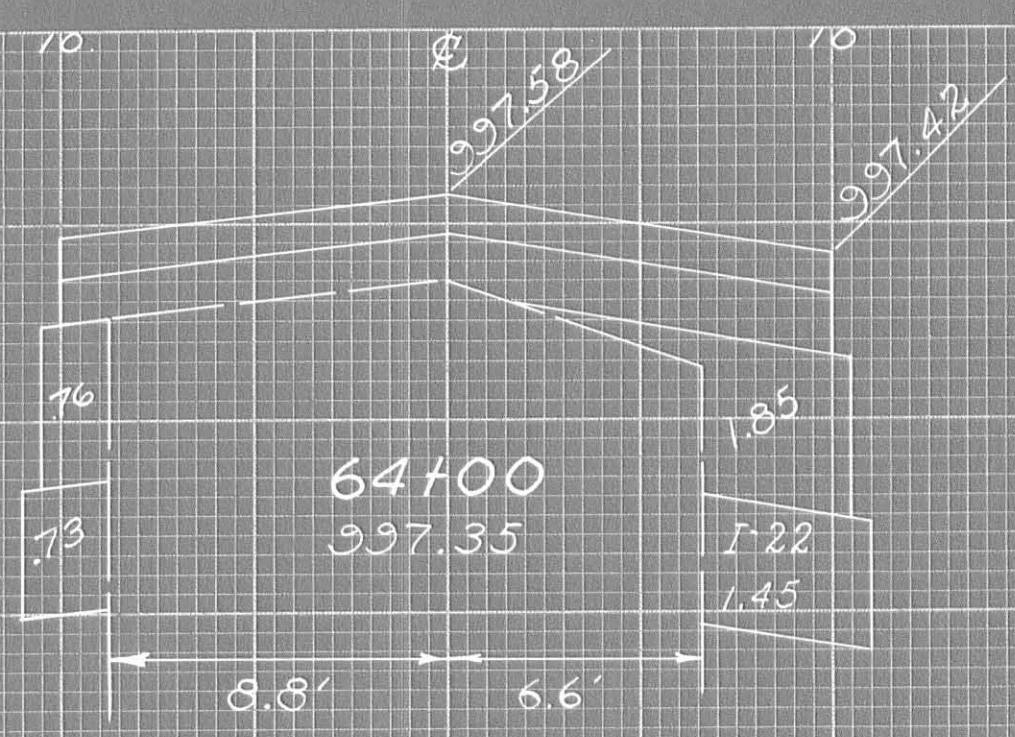
52+00	1.26	8.24	1.32	3.03
52+00	7.64		1.95	
Total to Sheet 6		8.2 Cu. Yds.	3.0 Cu. Yds.	

TYPICAL SECTION NR 2

62+00	8.26	14.90	4.55	6.55
62+50	7.85	13.36	2.53	4.24
63+00	6.59	3.25	2.05	3.85
63+50	3.33	5.49	2.11	3.97
64+00	2.61		2.18	
Total to Calculations		42.0 Cu. Yds.	18.6 Cu. Yds.	

ESTIMATED QUANTITIES TYPICAL NR 4

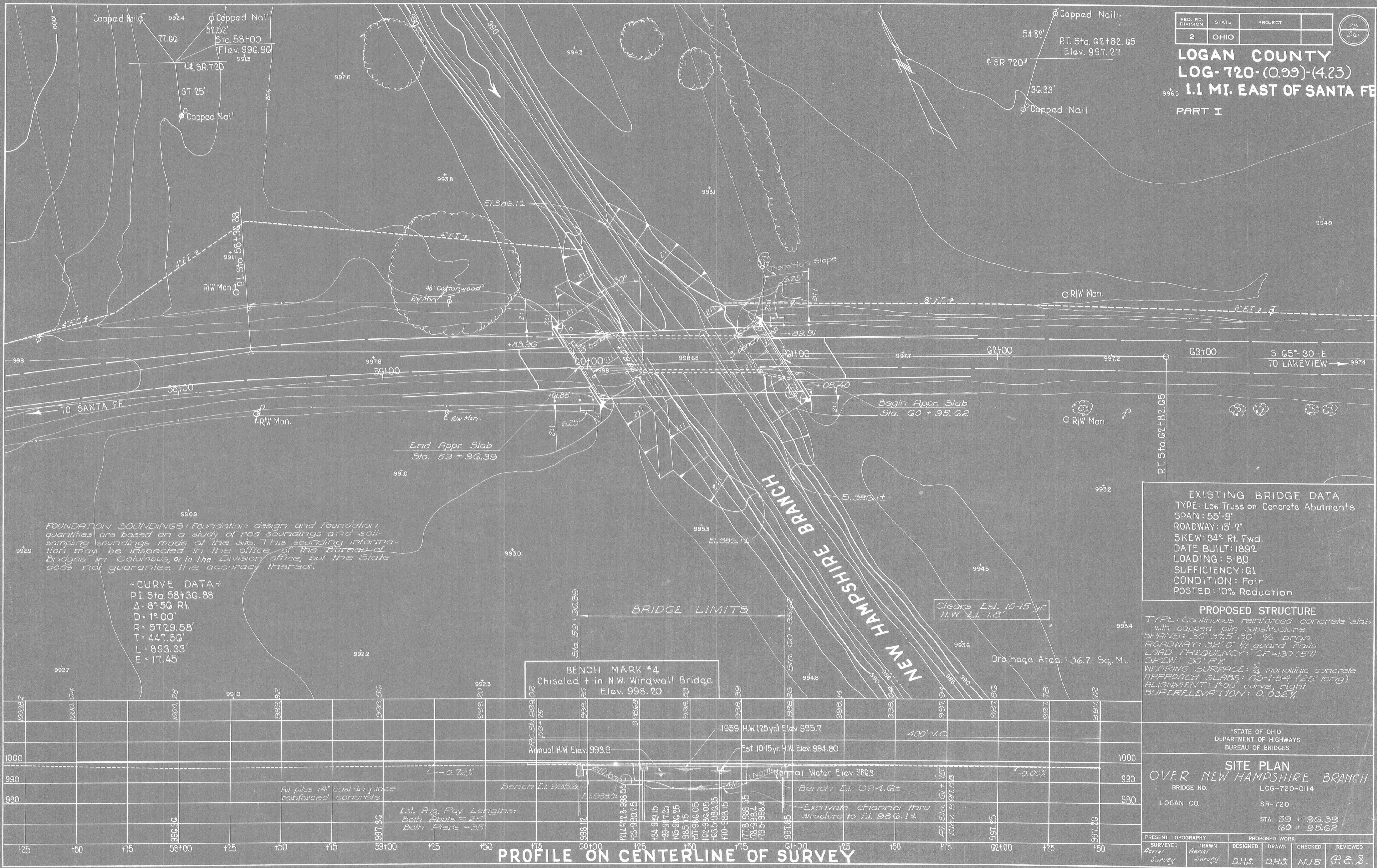
STATION	Item B-19 Aggre. Base Sq. Ft.	Item I-22 Subbase Cu. Yds.	Item B-19 Aggre. Base Sq. Ft.	Item I-22 Subbase Cu. Yds.
112+10	.63	.47	.66	.49
112+50	3.76	4.85	1.52	1.89
112+81	4.69	1.35	1.77	.68
112+90	3.43		2.31	
114+10	5.96	8.00	2.54	4.04
114+50	4.84	6.26	2.91	2.23
114+91	3.40	.78	1.35	.42
115+00	1.26		1.35	
Total to Calculations		21.7	9.8	



EXAGGERATED SECTIONS

FED. RD. DIVISION	STATE	PROJECT	23 36
2	OHIO		

LOGAN COUNTY
LOG-720-(0.99)-(4.23)
1.1 MI. EAST OF SANTA FE
PART I



FOUNDATION SOUNDINGS: Foundation design and foundation quantities are based on a study of rod soundings and soil-sampling soundings made at this site. This sounding information may be inspected in the office of the Bureau of Bridges in Columbus, or in the Division office, but the State does not guarantee the accuracy thereof.

~CURVE DATA~
 P.I. Sta 58+36.88
 Δ = 8°56' Rt.
 D = 1°00'
 R = 5729.58'
 T = 447.56'
 L = 893.33'
 E = 17.45'

EXISTING BRIDGE DATA
 TYPE: Low Truss on Concrete Abutments
 SPAN: 55'-9"
 ROADWAY: 15'-2"
 SKEW: 34° Rt. Fwd.
 DATE BUILT: 1892
 LOADING: S-80
 SUFFICIENCY: G1
 CONDITION: Fair
 POSTED: 10% Reduction

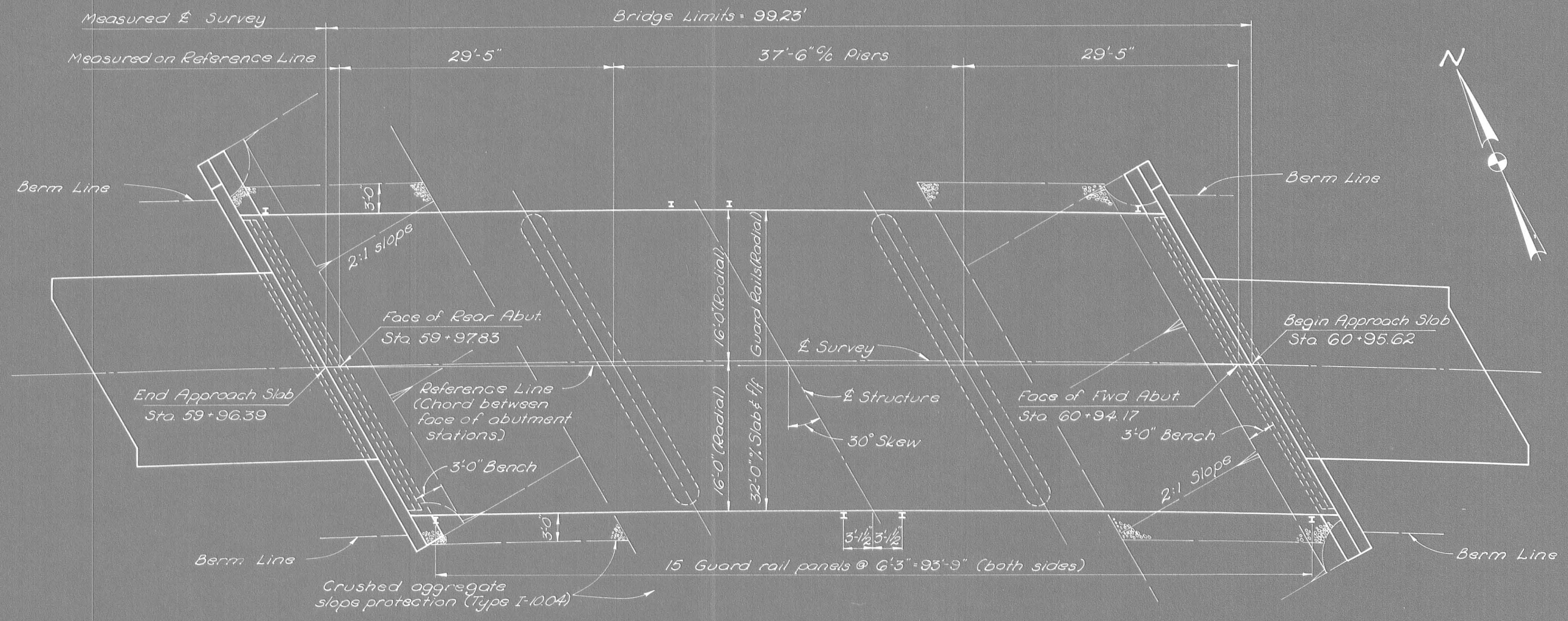
PROPOSED STRUCTURE
 TYPE: Continuous reinforced concrete slab with capped pile substructure
 SPANS: 30'-37.5'-30' 1/2 brgs.
 ROADWAY: 32'-0" fl. guard rails
 LOAD FREQUENCY: CF=130 (57)
 SKEW: 30° RE
 WEARING SURFACE: 3/4 monolithic concrete
 APPROACH SLABS: A5-1-54 (25' long)
 ALIGNMENT: 1°00' curve, right
 SUPERELEVATION: 0.032%

*STATE OF OHIO
 DEPARTMENT OF HIGHWAYS
 BUREAU OF BRIDGES

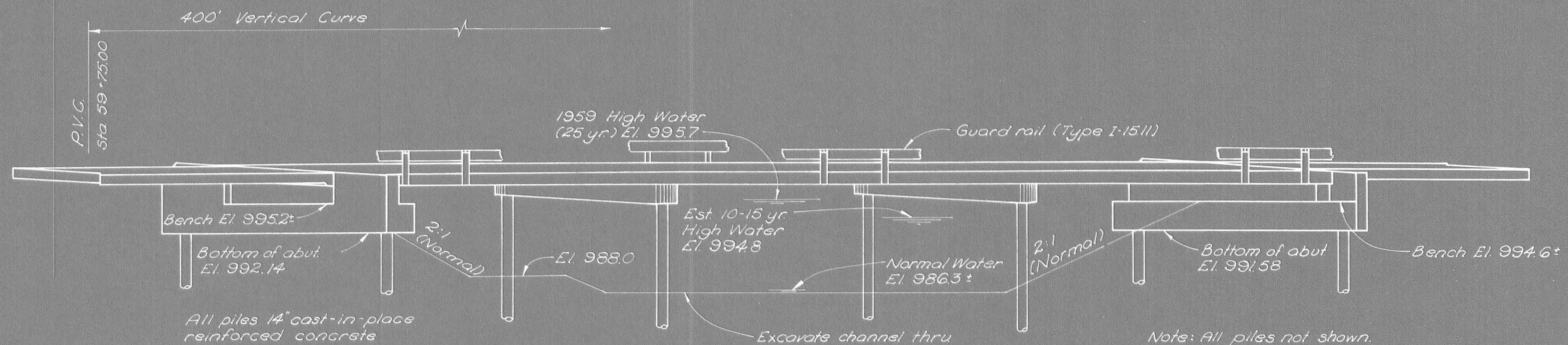
SITE PLAN
OVER NEW HAMPSHIRE BRANCH
 BRIDGE NO. LOG-720-0114
 LOGAN CO. SR-720
 STA. 59 + 96.39
 60 + 95.62

PRESENT TOPOGRAPHY		PROPOSED WORK			
SURVEYED	DRAWN	DESIGNED	DRAWN	CHECKED	REVIEWED
Aerial Survey	Aerial Survey	D.H.S.	D.H.S.	N.J.B.	P.E.S.

**LOGAN COUNTY
LOG-720-(0.99)(4.23) PART I**



GENERAL PLAN



ELEVATION

GENERAL NOTES

REFERENCE shall be made to Standard Drawing CS-1-54 revised 7-16-56, A-1-54 revised 12-1-54, and P-1-54 revised 2-2-59.

REMOVAL OF EXISTING STRUCTURE: When no longer needed to maintain traffic the existing structure shall be removed. Floor beams, joists, strip floor, construction clips, and steel beam guard rail on bridge and approaches shall be carefully dismantled and piled along the right-of-way for disposal by the States forces. Strip floor may be removed in sections not to exceed 4 ft in width. Suitable waste masonry may be used as slope protection as directed by the Engineer.

PILES shall be driven to a minimum bearing capacity of 27 tons per pile for the abutments and 38 tons per pile for the piers.

PIER PILE ENCASEMENT as shown on Std. Dwg. No. P-1-54 may be omitted provided that the tapered portion, if any, of all pier piles does not extend above the stream bed or the proposed surface of the ground. If the tapered portion of any pile extends above these limitations, the encasement will be required for all the pier piles. If the encasement is omitted the pile casings shall have a thickness of metal not less than No. 7 gauge, and the painting of the piles shall extend to low water elevation or, if the proposed surface of the ground is above low water, the painting shall extend to at least one foot below the proposed surface of the ground.

EXCAVATION QUANTITY for the abutments in addition to that outlined in Sec. E-2.09, includes the removal of material bounded by the proposed bench, by the front vertical plane described in Sec. E-2.09 and by the finished slope of the cut.

ESTIMATED QUANTITIES

Item	Total	Unit	Description	Supstr.	Abuts	Piers	Gen'l
E-2	80	Cu. Yd.	Unclassified excavation		80		
E-3	681	Cu. Yd.	Channel excavation				681
S-1	166	Cu. Yd.	Class "C" concrete, superstructure and pier caps	153		13	
S-1	51	Cu. Yd.	Class "E" concrete, abutments		51		
S-4	46,184	Lb.	Reinforcing steel	37,597	5,092	3,495	
S-14	198.46	Lin. Ft.	Railing (Type I-15.11 with galvanized steel posts & bolts)	198.46			
S-16	Lump	Sum	First test piles				Lump
S-18	770	Lin. Ft.	14" Cast-in-place reinforced concrete piles		350	420	
S-24	Lump	Sum	Removal of existing structure				Lump
S-29	17	Cu. Yd.	Porous backfill		17		
I-10	200	Sq. Yd.	Crushed aggregate slope protection (Type I-10.04)				200
* Special	166	Each	Water-reducing, set-retarding admixture	153		13	

* See Proposal Notes

STATE OF OHIO
DEPARTMENT OF HIGHWAYS
DIVISION OF DESIGN AND CONSTRUCTION
BUREAU OF BRIDGES

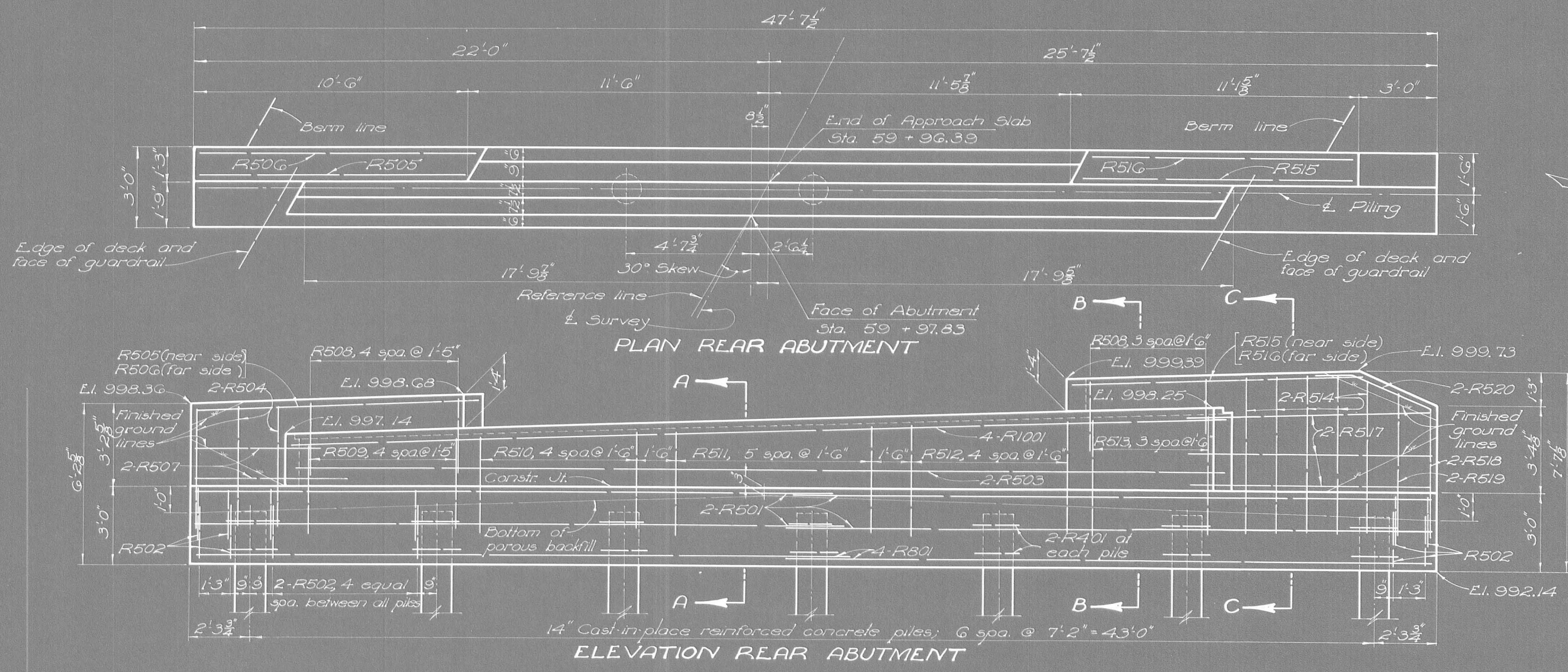
**GENERAL PLAN AND ELEVATION
NOTES AND ESTIMATED QUANTITIES**
BRIDGE NO. LOG-720-0114
OVER
NEW HAMPSHIRE BRANCH
LOGAN COUNTY STA. 59+96.39
60+95.62

DESIGNED	DRAWN	TRACED	CHECKED	REVIEWED	DATE
OPM	OPM	philly	Key	DFG	3-30-62
				AJF	

FED. RD. DIVISION	STATE	PROJECT
2	OHIO	

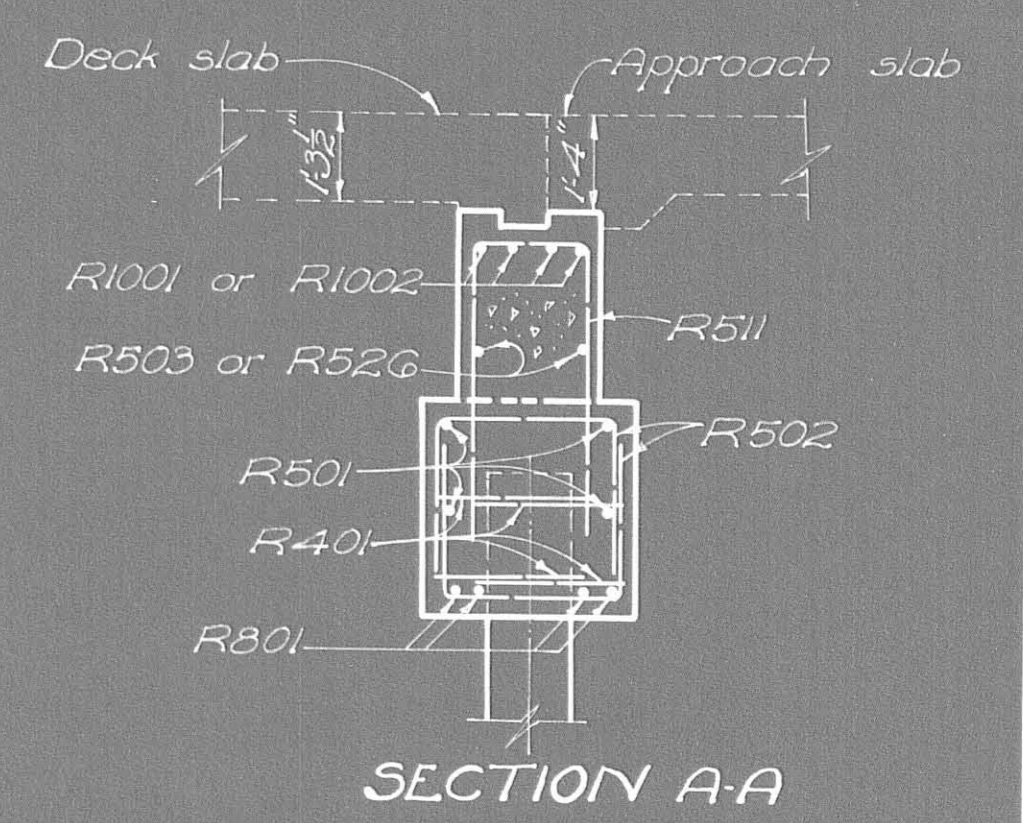
25
36

LOGAN COUNTY
LOG-720-(0.99)(4.23) PART I

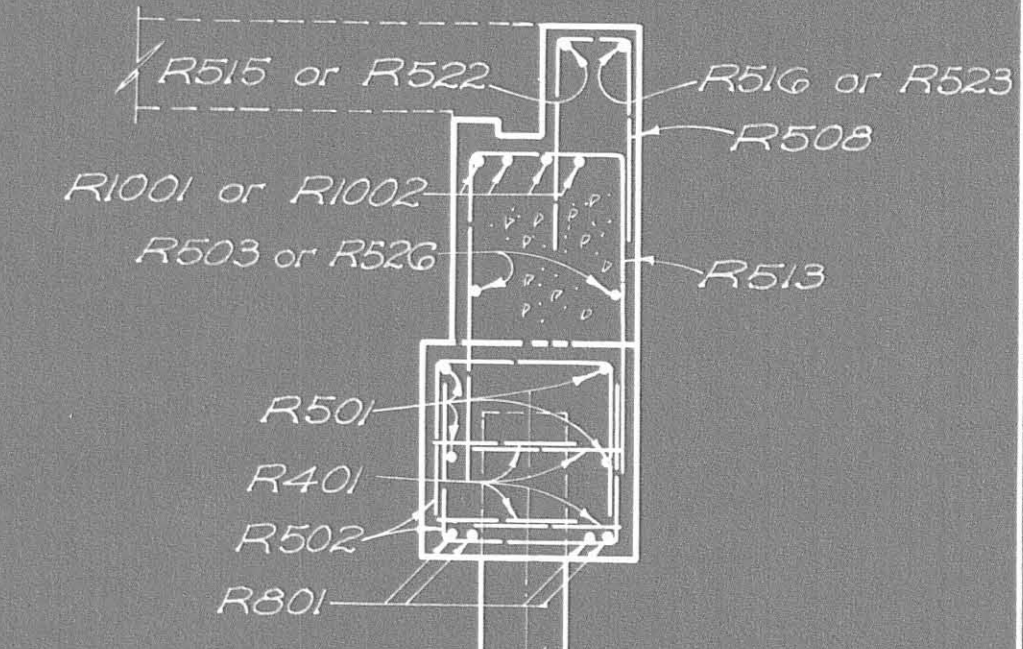


PLAN REAR ABUTMENT

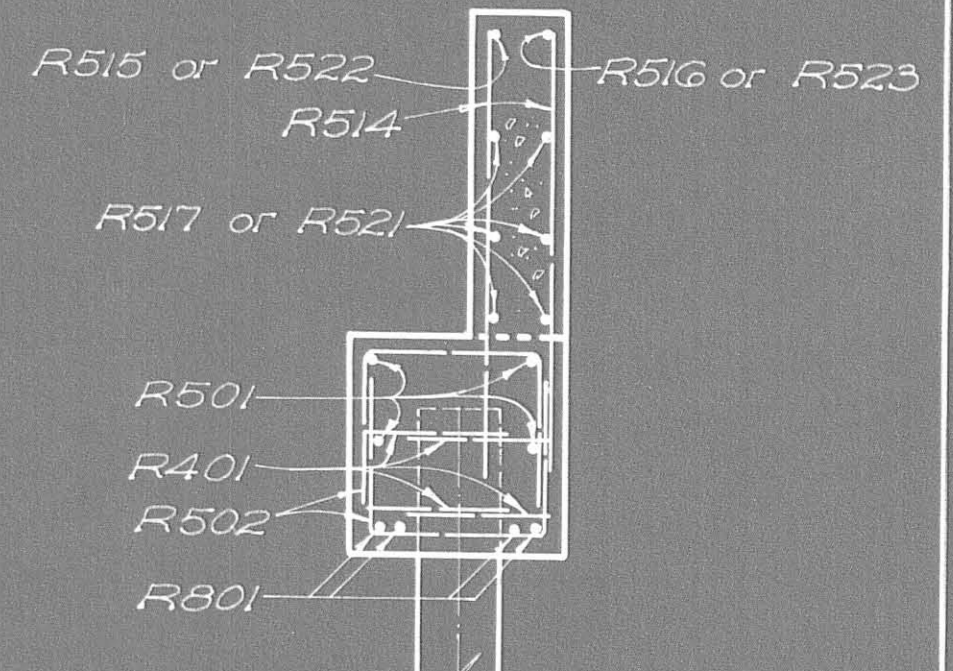
ELEVATION REAR ABUTMENT



SECTION A-A

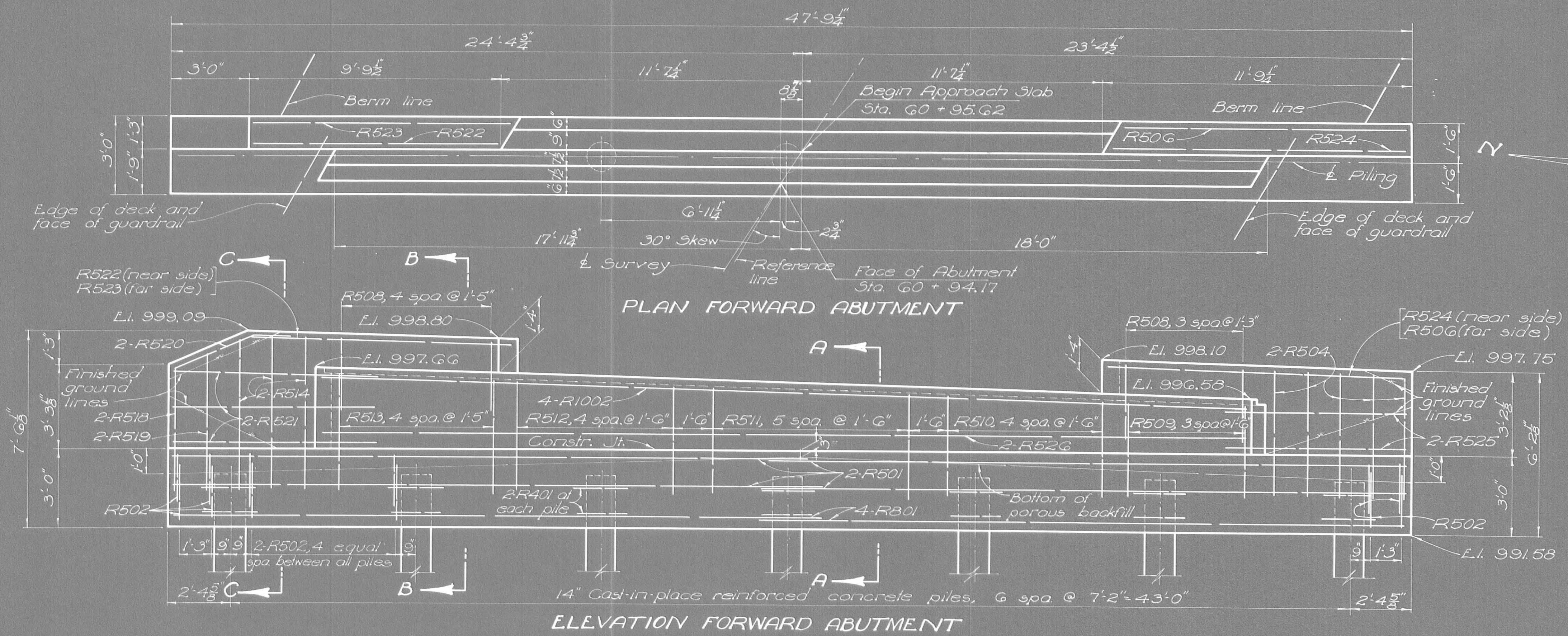


SECTION B-B



SECTION C-C

ADDITIONAL ABUTMENT DETAILS are shown on Std. Dwg. A1-54.



PLAN FORWARD ABUTMENT

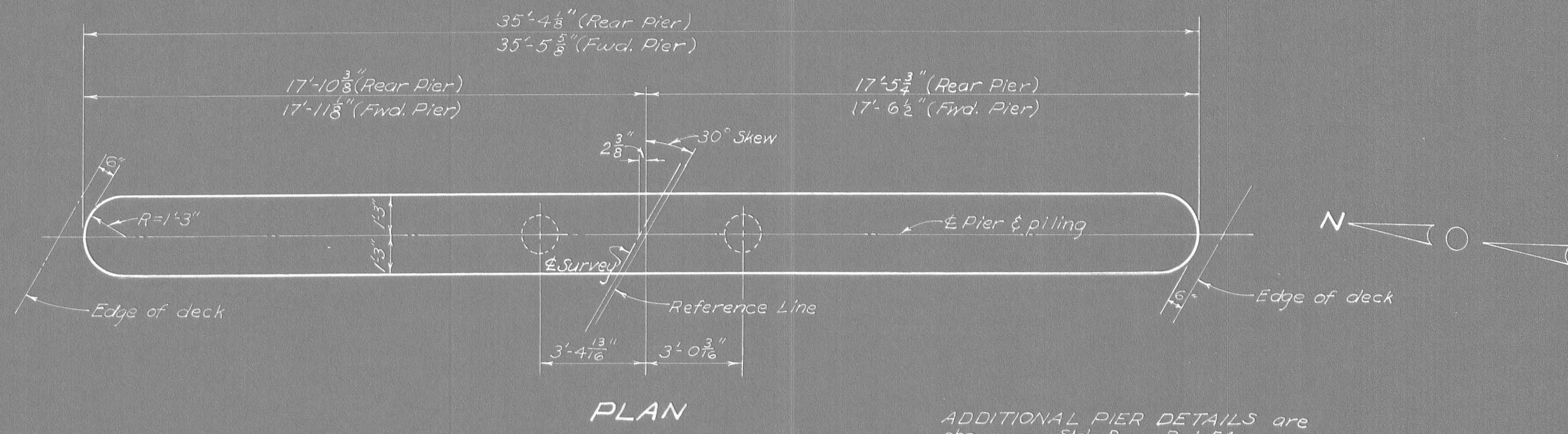
ELEVATION FORWARD ABUTMENT

ABUTMENT DETAILS

BRIDGE NO. LOG-720-014
OVER NEW HAMPSHIRE BRANCH

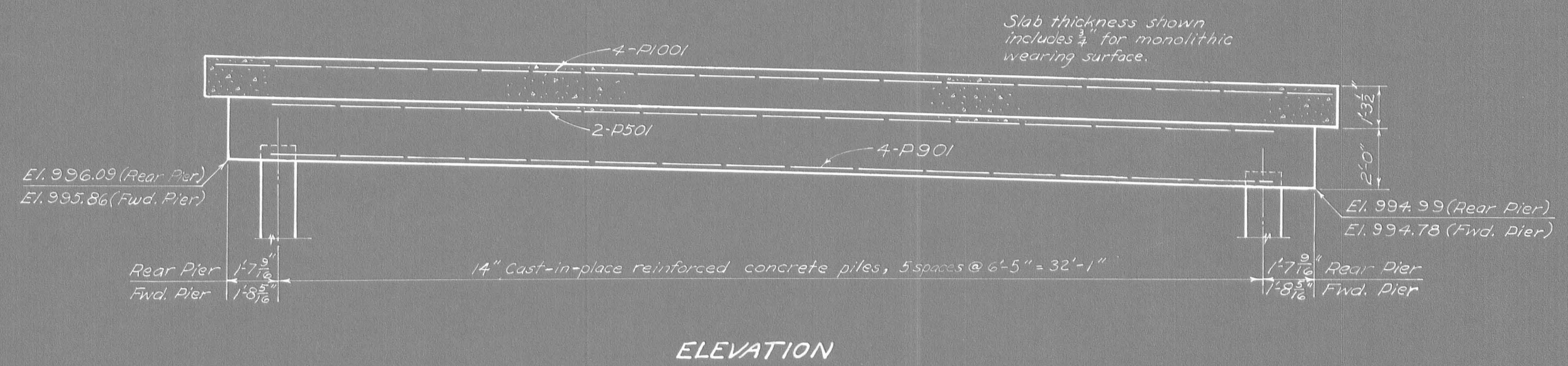
LOGAN COUNTY Sta. 59 + 96.39
60 + 85.62

DESIGNED	DRAWN	TRACED	CHECKED	REVIEWED	DATE	REVISED
OPM	OPM	G	Key	DPG	3-30-62	AJF



PLAN

ADDITIONAL PIER DETAILS are shown on Std. Dwg. P-1-54.



ELEVATION

REINFORCING STEEL LIST

Mark	No.	Length	Weight	Shp.	Bending Diagrams	Mark	No.	Length	Weight	Shp.	Bending Diagrams	Mark	No.	Length	Weight	Shp.	
Superstructure																	
F1027	54	31'-4"	7,281	S		R504	16	4'-9"	79	S		P1001	8	36'-3"	124.8	S	
G1027	26	17'-1"	1,911	S		R505	1	10'-2"	11	S		P901	8	32'-10"	893	S	
H1027	26	13'-6"	1,510	S		R506	2	10'-7"	22	S		P701	72	4'-0"	589	S	
A927	87	34'-10"	10,304	S		R507	4	5'-9"	24	S		P501	4	32'-10"	137	S	
B927	28	24'-11"	2,372	B		R508	18	6'-8"	125	B		P502	48	8'-0"	401	B	
C927	28	21'-11"	2,086	B		R509	9	8'-9"	82	B		P503	8	6'-4"	53	B	
D927	14	23'-4"	1,111	S		R510	10	8'-9"	91	B		P401	48	5'-5"	174	B	
E927	14	17'-4"	825	S		R511	12	9'-5"	118	B		Replacement Bars					
U601	28	18'-5"	775	S		R512	10	9'-11"	103	B		RE1001	1	7'-2"	—	S	
M601	14	11'-6"	242	S		R513	9	10'-9"	101	B		RE901	1	6'-10"	—	S	
M601	106	36'-2"	5,758	S		R514	16	6'-3"	104	S		RE801	1	6'-6"	—	S	
N601	63	36'-2"	3,422	S		R515	1	10'-8"	11	S		RE701	1	6'-2"	—	S	
Abutments						R516	1	10'-0"	10	S		RE601	1	5'-11"	—	S	
R1001	4	35'-2"	605	S		R517	6	9'-5"	59	S		RE501	1	5'-7"	—	S	
R1002	4	35'-6"	611	S		R518	4	4'-11"	21	S		RE401	1	5'-5"	—	B	
R801	16	25'-0"	1,068	S		R519	4	5'-4"	22	S		<p>REPLACEMENT BARS: If reinforcing bars are fabricated from stock which has previously been tested and approved by the Ohio Highway Testing Laboratory, test samples as provided in Sec. S-4.02 need not be furnished and replacement bars will not be required.</p>					
R501	16	24'-7"	410	S		R520	4	4'-9"	20	S							
R502	136	6'-7"	934	B		R521	6	8'-0"	50	S							
R503	2	35'-2"	73	S		R522	1	9'-4"	10	S							
						R523	1	9'-10"	10	S							
						R524	1	11'-4"	12	S							
						R525	4	6'-11"	29	S							
						R526	2	35'-6"	74	S							
						R401	56	5'-5"	203	B							

STATE OF OHIO
DEPARTMENT OF HIGHWAYS
DIVISION OF DESIGN AND CONSTRUCTION
BUREAU OF BRIDGES

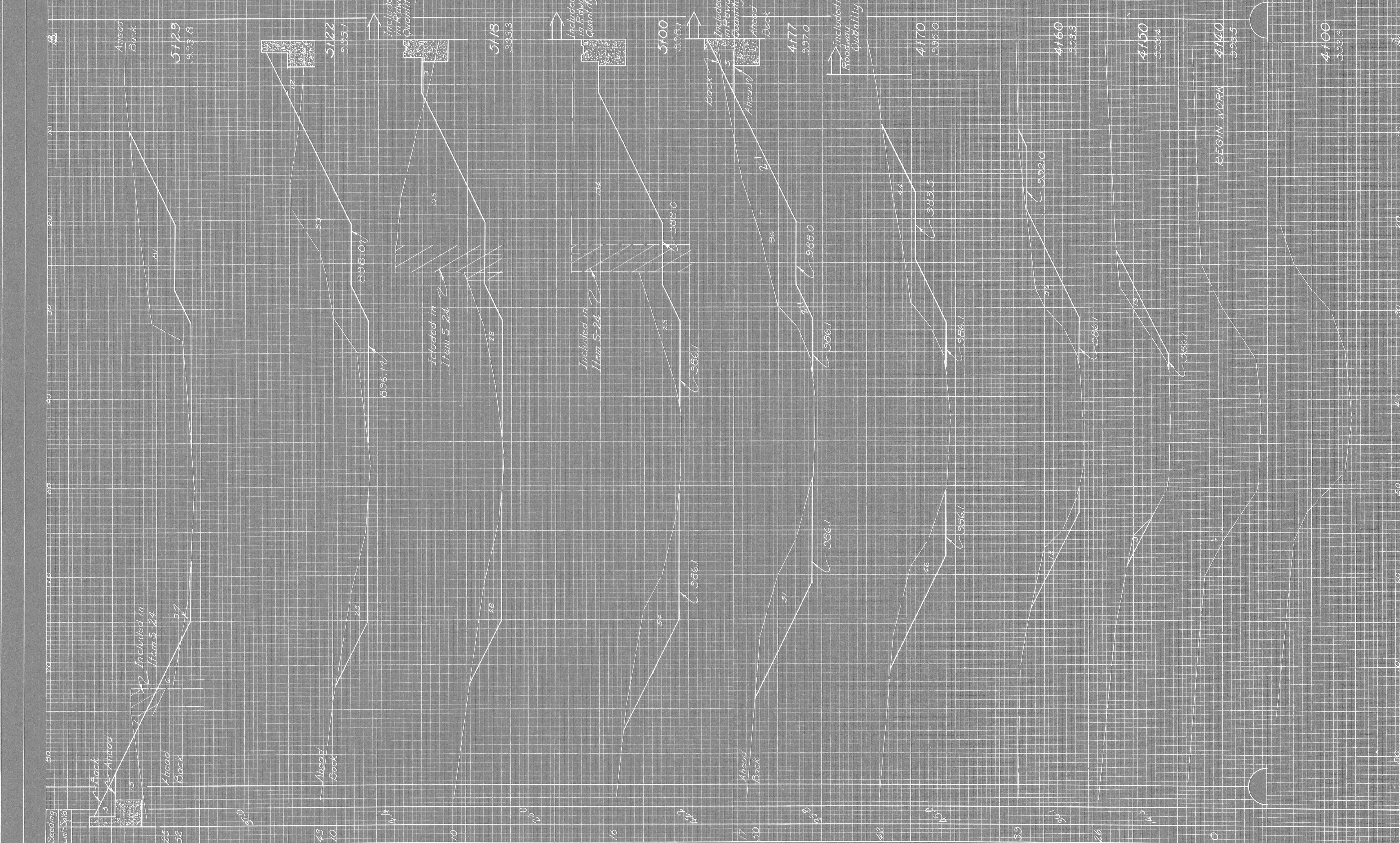
**PIER DETAILS &
REINFORCING STEEL LIST**
BRIDGE NO. LOG-720-0114
over
NEW HAMPSHIRE BRANCH
STA. 59+96.39
LOGAN COUNTY 60+95.62

DESIGNED	DRAWN	TRACED	CHECKED	REVIEWED	DATE	REVISED
CPM	CPM	14D	Roy	BJG	3-30-62	

SEEDING END WIDTH	SQ. YDS.	End Area		Volume
		Cut	Fill	
		85	21	26.3
		83	26	
				118
				19
				144
				118
				150
				28
				26
				12
				16
				30
				0
				0
				0
				0

FED. RD. DIVISION	STATE	PROJECT	27 36
2	OHIO		

LOGAN COUNTY
LOG - 720 - (0.99)(4.23)



END AREA		VOLUME	
CUT	FILL	CUT	FILL