

The original of this page is blank or missing.

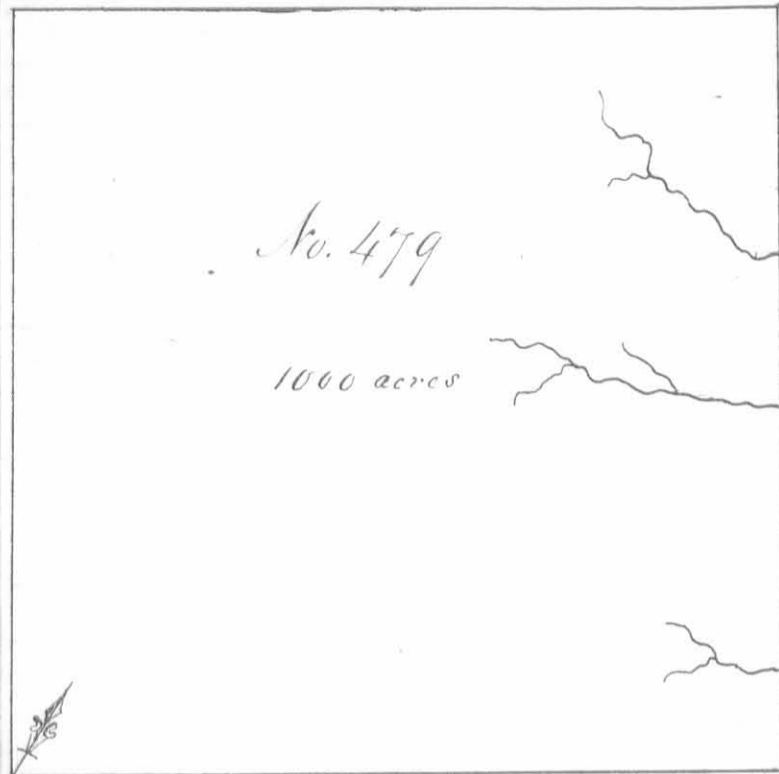
The original of this page is blank or missing.

The original of this page is blank or missing.

The original of this page is blank or missing.

The original of this page is blank or missing.

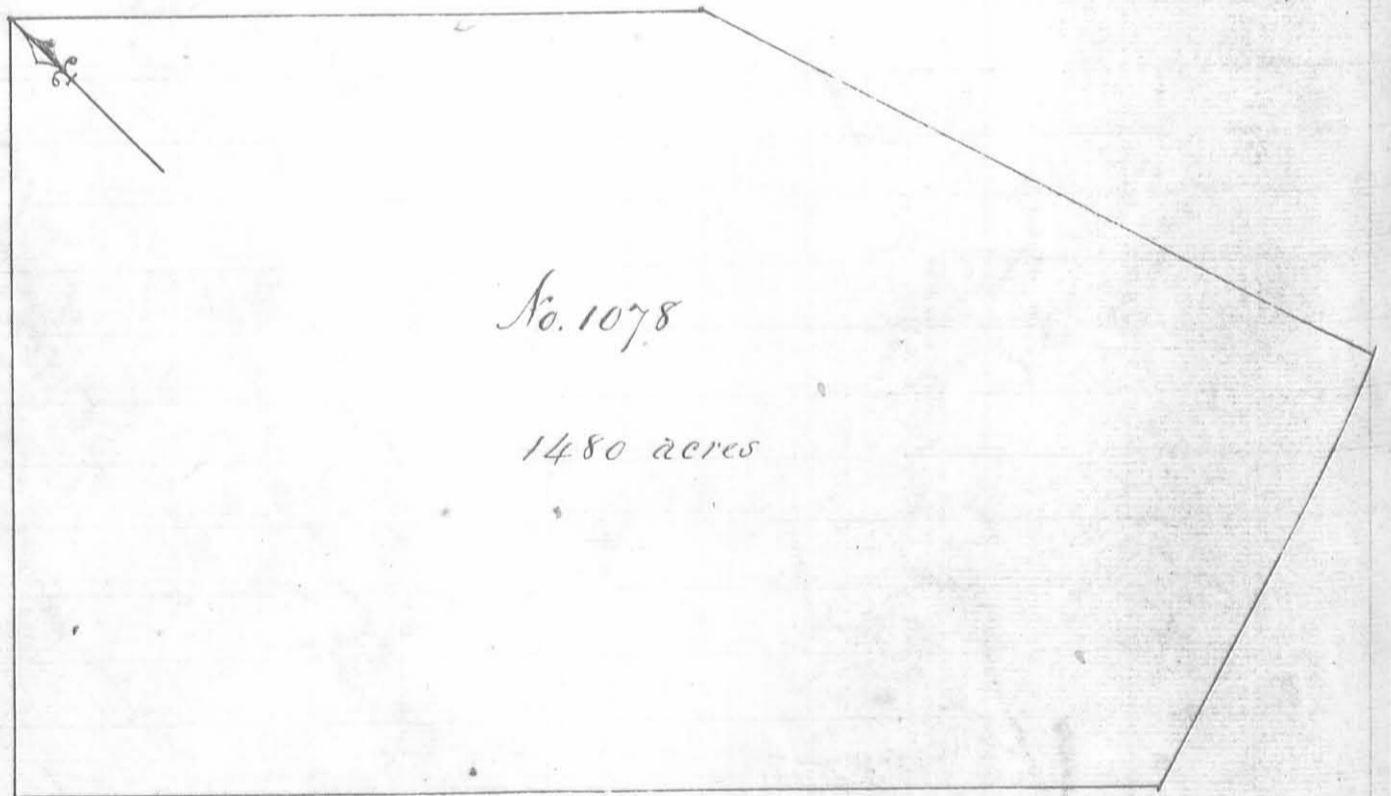
The original of this page is blank or missing.



Surveyed for David Duncan  
approx 1000 acres of land on part  
of a Military Warrant No 214  
on the waters of Darlys Creek  
beginning at a hickory and  
sugar tree in the line of Lucas  
Sullivan's No. 3681 and south-  
west corner to Richard Stephen-  
sons No 3163, running with  
Stephensons line N. 37. N. 398  
poles crossing several drains  
to two sugar trees Northwest  
corner to said Stephensons sur-

vey, thence S. 53. N. 402 poles to two beech, thence S. 37. E. 398 poles to  
two beech and a sugar tree, thence N. 53. E. 402 poles to the beginning  
Peter Murphy  
William Boyd 3  
John Brule Mkr.

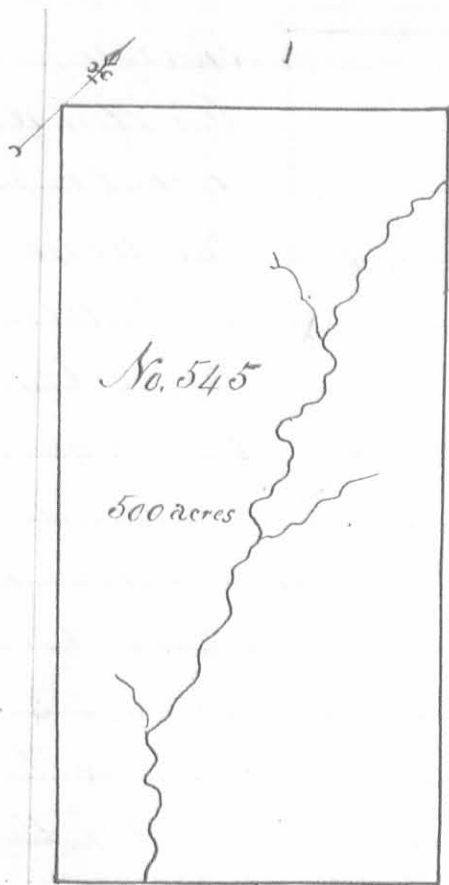
Lucas Sullivan L.S.  
September 14<sup>th</sup> 1799  
September 27<sup>th</sup> 1799



Surveyed for Calohie Miami's 1480 acres of land on part of a military warrant No 2272  
on the waters of the State Miami. Beginning at a hickory and two dogwoods in the line of William Pearce  
survey No. 711. running S 45 E 362 poles with Pearce's line passing his corner at 80 poles to two  
small ash in the line of Peregrine Fitzhughes survey No 2288, thence with said line S 17 E  
393 poles to a white oak, hickory and dogwood, southerly corner to Fitzhughes and corner  
to Robert Ballards survey No. 2351. thence with Ballard's line S. 73. N. 242 poles to two  
hickories in Ballard's line, thence N. 45 N. 595 poles to three hickories, thence N. 45 E 400 poles to  
the beginning.

John Hamilton 3  
Arthur Dodson 3  
Edward Moorely Mkr

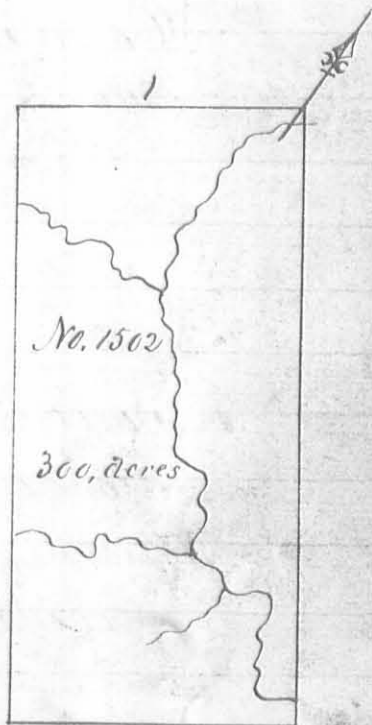
John Olanon D.S.  
July 8. 1796  
April 19. 1797



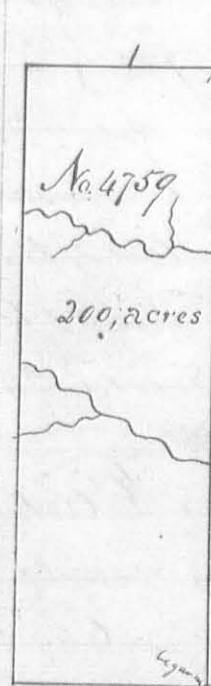
Surveyed for Thomas Sears 500 acres of land on part of a Military warrant No. 2418 on the waters of Darby's Creek; beginning at three buckeyes from one root and an elm, easterly corner to Philip Slaughters survey No. 3154, thence N. 52 E. 200 poles to a sugar tree, ash and beech, thence S 38 E 400 poles crossing a branch to two beeches and a sugar tree, thence S. 52 W. 200 poles crossing a branch to two sugar trees and an Elm easterly corner to George McCardies survey No. 3155, thence with his line N. 38. W. 400 poles to the beginning.

Set Sharp  
John Sharp 3/66  
John M'Donalds Mkr.  
Duncan McArthur D.S.  
April 1. 1806  
May 5. 1806

James  
Surveyed for John Denny of a 300 acres of land on a military warrant No. 275 and part of No. 2755 on the waters of Darby's creek; beginning at two beeches southerly corner to Lucas Sullivants survey No. 3681, running with his line N. 37 W. 320 poles, crossing two branches to a lynn and buckeye corner to said Sullivants survey, thence S 53 W. 150 poles to two sugar trees, thence S. 37. E. 320 poles crossing several branches to two sugar trees and a hickory; thence N. 53. E. 150 poles to the beginning.



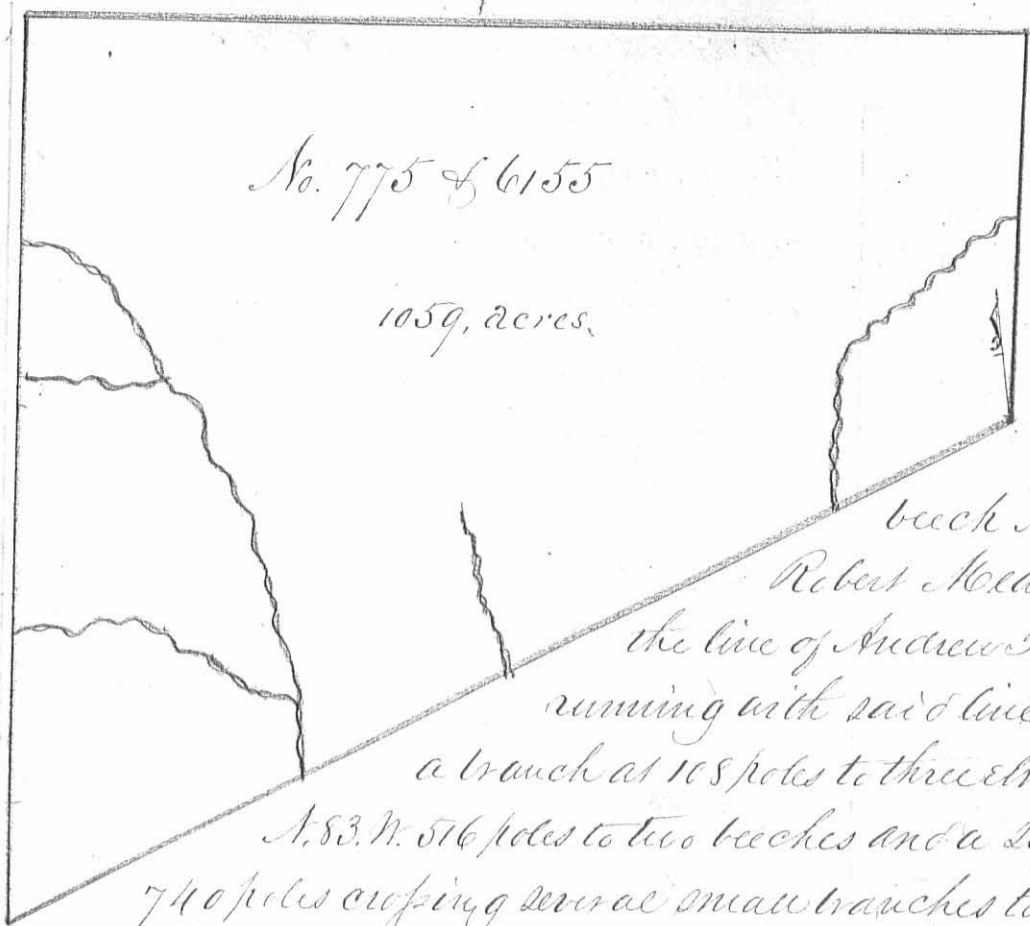
William Gibson  
Henry Sturms 3/66  
John Popeau Mkr.  
James Gallaway D.S.  
June 8<sup>th</sup> 1806  
June 10<sup>th</sup> 1806



Surveyed for Thomas Campbell of a 200 acres on a military warrant No. 2793 on the waters of Darby's Creek; beginning at two sugar trees and a hickory southerly corner to James Denny's survey No. 1502, running with his line N. 37 W. 320 poles crossing two branches to two sugar trees corner to said Denny's survey, thence S. 53 W. 100 poles to two elms and a hickory, northerly corner to Benjamin Popeau's survey No 4658 and 4678, thence with his line S. 37 E. 320 poles crossing several branches to a sugar tree corner to said Popeau's survey, thence N. 53, 100 poles to the beginning.

William Gibson  
Henry Sturms 3/66  
John Popeau Mkr.  
James Gallaway D.S.  
June 8<sup>th</sup> 1806  
June 10<sup>th</sup> 1806



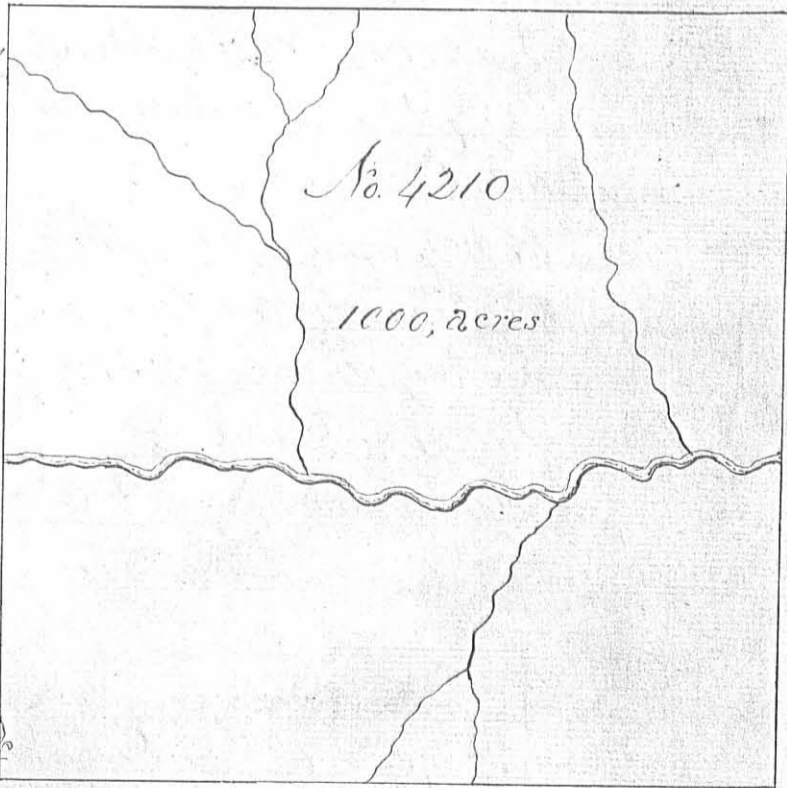


Surveyed for Thomas Chilton 1059 acres of land on part of a military warrant No. 1249 on the waters of Meile Creek; beginning at three sugar trees and a beech Northeastly corner to Robert Mcleans Survey No. 5092 in the line of Andrew Fortunes Survey No. 2982 running with said line N. 7. E. 203 poles crossing a branch at 108 poles to three elms and a hickory, thence N. 83. W. 516 poles to two beeches and a sugar tree, thence S. 7. W. 740 poles crossing several small branches to two beeches and two sugar trees Northeast corner to Strother Jones survey No. 4210 and North westerly corner to said Mcleans survey; thence with Mcleans line N. 70 E. 580 poles crossing several small branches to the beginning.

David Sharp  
 William Kenny <sup>3</sup>/<sub>4</sub> C.C.  
 Joseph Keyner, Mkr.

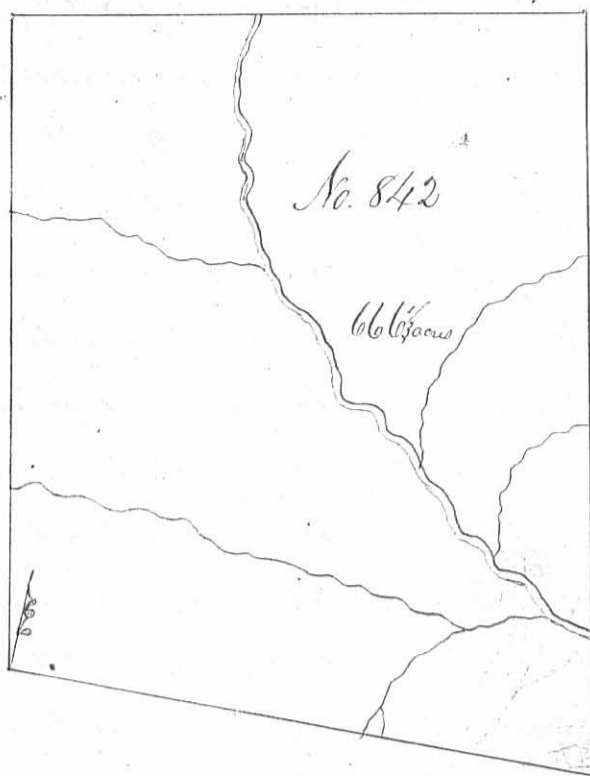
Duncan McArthur D.S.  
 March 20<sup>th</sup> 1809  
 May 11<sup>th</sup> 1809

Surveyed for Strother Jones 1000 acres of land on part of a Military warrant, No. 88, on Meile Creek Beginning at a hickory, ash, and, Lymu, Northeast corner to Robert Mcleans Survey No. 5091 running North 400 poles crossing a branch at 158; Meile creek at 166 and a large branch at 368 poles, to an ash hickory and buck eye; thence East 400 poles, crossing several small branches to two beeches and two sugar trees; thence South 400 poles crossing the creek at 230 poles to two sugar trees and a large hickory, thence West 400 poles crossing several small branches to the beginning.



George Steer  
 Richard Mammow <sup>3</sup>/<sub>4</sub> C.C.  
 Aaron Brown Mkr.

Duncan McArthur D.S.  
 November 20<sup>th</sup> 1808  
 May 11<sup>th</sup> 1809



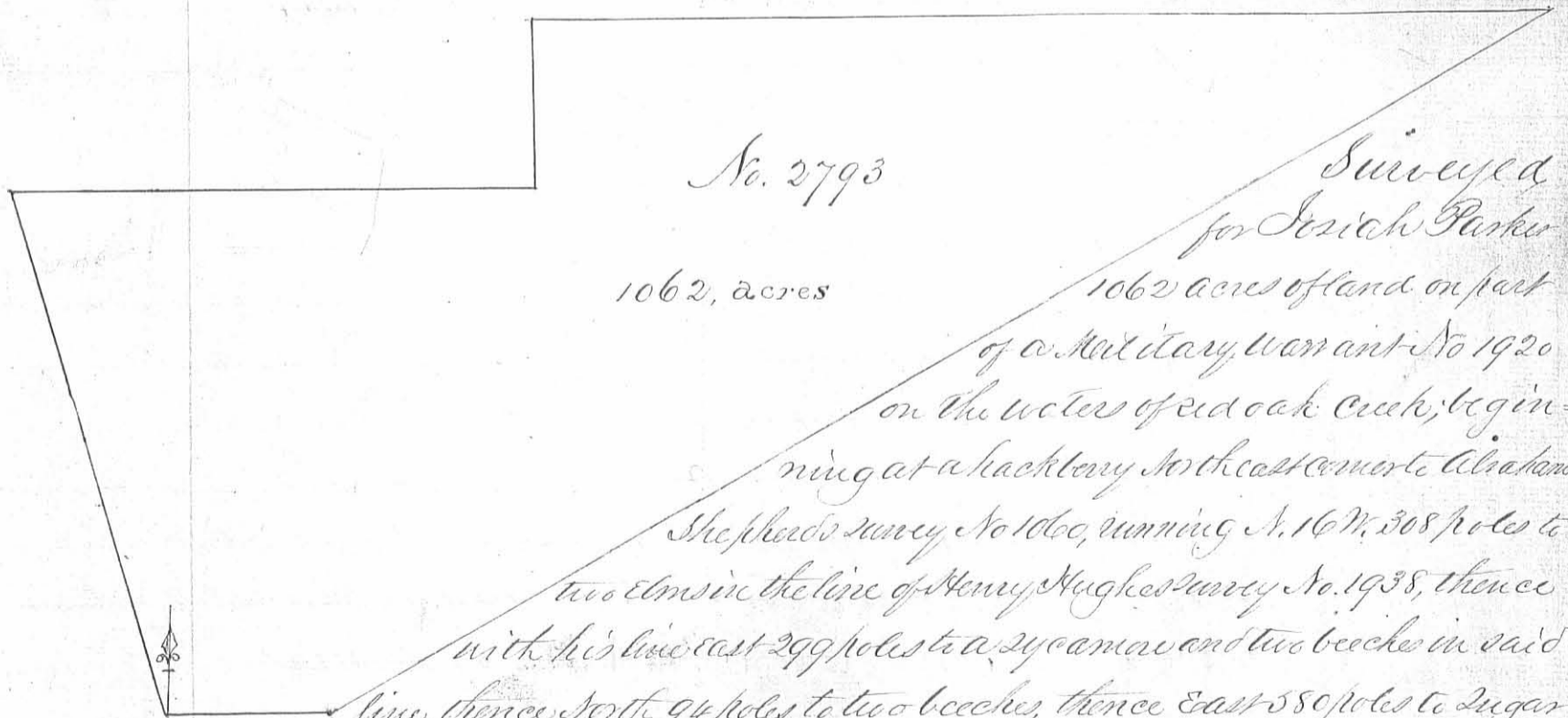
Survey for Daniel Bedinger 66 6/100 acres of land on part of a Military warrant No. 2211 on Mill Creek; beginning at two beeches and a sugar tree north west corner to John McDonalds survey No. 5089 in the line of survey No. 3325, running with said line No. 340 poles crossing a branch at 92 p. and one at 238 poles to a beech ash and white oak, South west corner to Charles Humphreys survey No. 3472, thence with the lower line of said Humphreys survey and corner

thence N. 80 E. 300 poles crossing the creek at 125 poles to a sugar tree and two large ashes, thence S. 10 E. 395 poles crossing several small branches and Mill creek to three hickories on the north side of a branch in the line of said McDonalds survey, thence with said line west 304 poles crossing a branch at 110 and one at 124 poles to the beginning.

Duncan McArthur D.S.

November 22<sup>nd</sup> 1808

December 12<sup>th</sup> 1809



No. 2793

1062, acres

Surveyed for Josiah Parker

1062 acres of land on part of a Military warrant No. 1920

on the waters of red oak Creek; beginning at a hackberry northeast corner to Abraham

Shepherd's survey No. 1000, running N. 16 W. 308 poles to two elms in the line of Henry Hughes survey No. 1938, thence

with his line east 299 poles to a sycamore and two beeches in said line, thence north 94 poles to two beeches, thence east 580 poles to sugar

tree, hackberry and elm in the line of said Parkers No. 1703, thence with said line passing his corner at 430 poles S. 61 W. 812 poles with the line of John Keith's survey No.

1700 to a buckeye and beech in the line of said Shepherd's survey, thence with his line west 94 poles to the beginning

William Jacobs

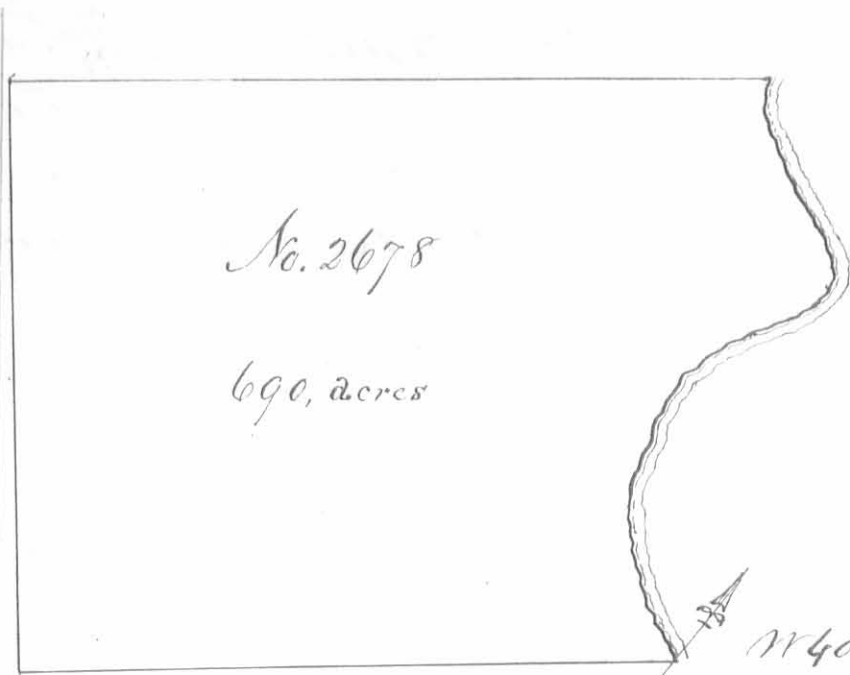
James Jacobs

Philamon Thomas, M.R.

Nathaniel Bailey D.S.

December 21<sup>st</sup> 1803

February 27<sup>th</sup> 1807



Surveyed for Oliver Towles  
690 acres of land on part of  
a military warrant No.  
855 on the lower side of  
Darby's creek; Beginning  
at a honey locust and  
two elms upper corner to  
said Towles survey No 2677  
running up the creek N. 75  
W. 40, N. 50 W. 30, N. 32, W. 30, N. 12, W. 40

North 30. N. 27, E. 72 - N. 30 W. 20, N. 62 W. 78, N. 45 W. 20, N. 15 W. 10 poles to a white  
oak, red oak and sugar tree, thence S 53 W. 395 poles to two elms, thence  
S 37 E. 310 poles to two ash, and a hickory, thence N. 53. E. 346 poles to the  
beginning.

John Ellison <sup>3</sup>

Robert Dixon <sup>3</sup> C.C.

John Flemming Mtr

Lucas Sullivan D.S.

October 6<sup>th</sup> 1796

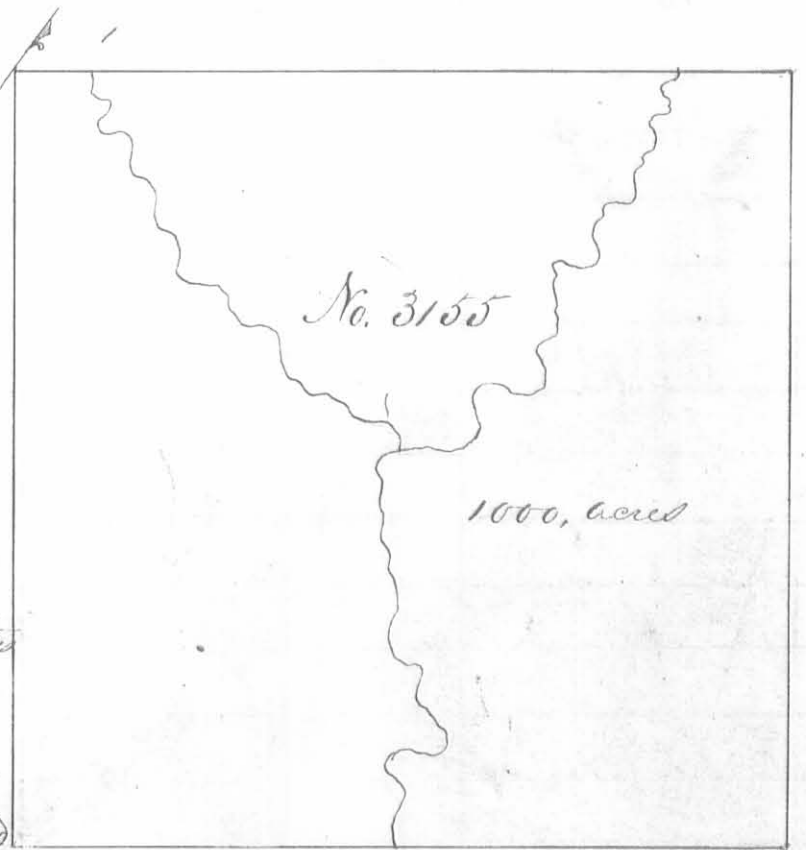
December the 9<sup>th</sup> 1796

Surveyed for George McCordie  
ap<sup>r</sup> 1000 acres of land on two  
Military Warrants No 169,  
4673 and part of 4728 on Beaver  
run a branch of Darby's Creek:  
Beginning at a poplar ash  
and hickory, South East corner  
to Philip Slaughters survey  
No. 3154, running with Slaughters  
line N. 52, E. 400 poles crossing  
a branch at 40 and Beaver run  
at 340 poles to three buckeyes and  
an elm, thence S, 38, E 400 poles to two sugar trees an and Elm,  
thence S, 52 W. 400 poles crossing Beaver run at 200 poles to two  
buckeyes, thence N, 38, W. 400 poles to the beginning.

George Mollonay <sup>3</sup>

Thomas Treacle <sup>3</sup> C.C.

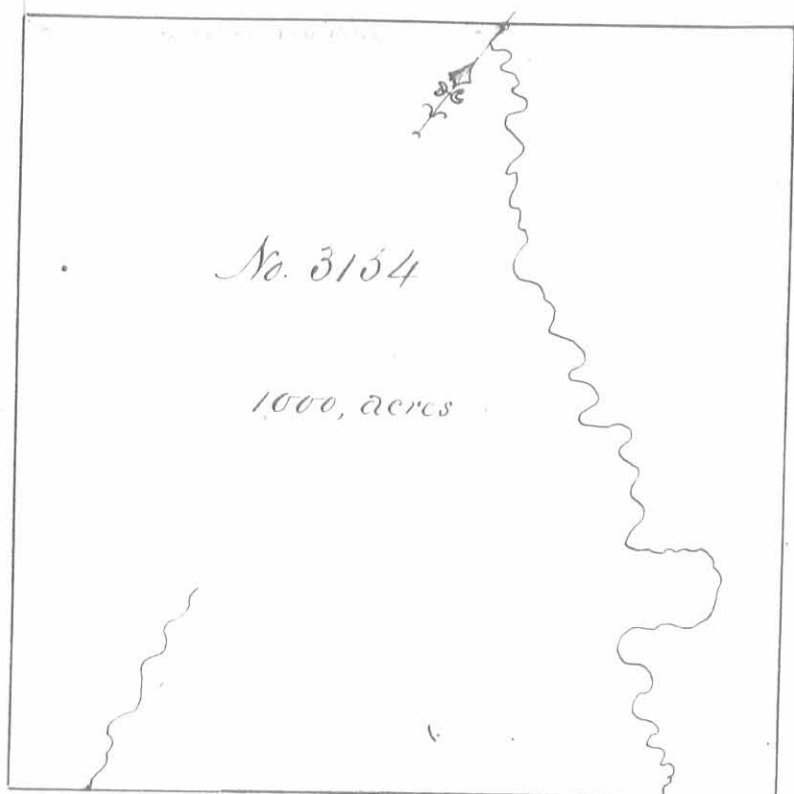
George Bennett Mtr



Lucas Sullivan D.S.

December 20<sup>th</sup> 1797

April 2<sup>nd</sup> 1798



Surveyed for Philip Slaughter  
 1000 acres of land on several military  
 warrants, No 4590, 4602, 3759,  
 3561 and part of leg on Beaver run  
 a branch of Darty's Creek; Begin-  
 ning on said run at two ash and  
 a beech marked L.S. 1797 about  
 1200 poles on a direct line from  
 the mouth of said run, running  
 S. 52, N. 250 poles, crossing a branch  
 several times to a large white  
 ash, lymu and sugar tree, thence  
 S. 38 E. 400 poles, to a poplar ash

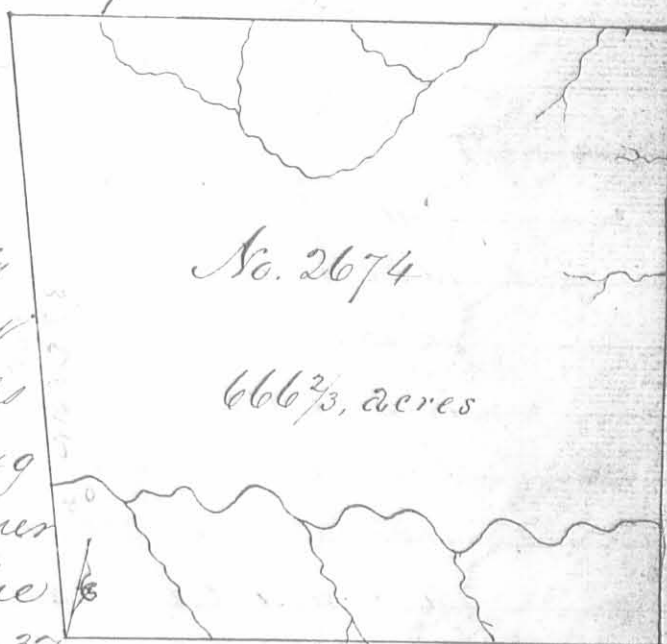
and hickory, thence N. 52, E. 400 poles, crossing Beaver run to three  
 buckeyes and an Elm, thence N. 38, W. 400 poles to three hickories  
 thence S. 2, W. 150 poles, crossing Beaver run three times to the be-  
 ginning.

Thomas Maack  
 George Holloway C.C.  
 George Pennell, Mkr.

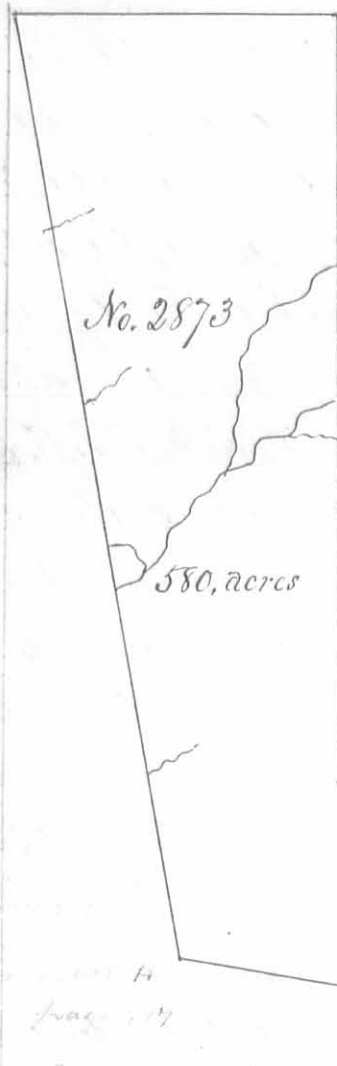
Sucas Sullivan D.S.  
 December 20<sup>th</sup> 1797  
 April 6<sup>th</sup> 1798

Surveyed for Thomas Holt 666<sup>2</sup>/<sub>3</sub>  
 acres of land on a military warrant  
 No. 4640, on the waters of Head River  
 and Mill Creek; beginning at a  
 buckeye and white walnut easterly  
 corner to David Bradfords survey  
 No. 3136, running N. 16. W. 328 poles  
 with Bradfords upper line crossing  
 a branch at 80 and passing his corner  
 at 160 poles, to two beeches in the line  
 of Mician Cochraus survey, No. 3437  
 thence with his line and with the line of said Cochraus survey No. 34  
 36 N. 80 E. 345 poles, crossing several branches to a large black  
 walnut and elm, thence S. 10. E. 325 poles, crossing several branches  
 to two hickories and a lymu, thence S. 80. W. 312 poles crossing several small  
 branches to the beginning

John McDonald  
 John McCollum C.C.  
 John Asken Mkr.



Duncan McArthur D.S.  
 December 20<sup>th</sup> 1804  
 February 15<sup>th</sup> 1805



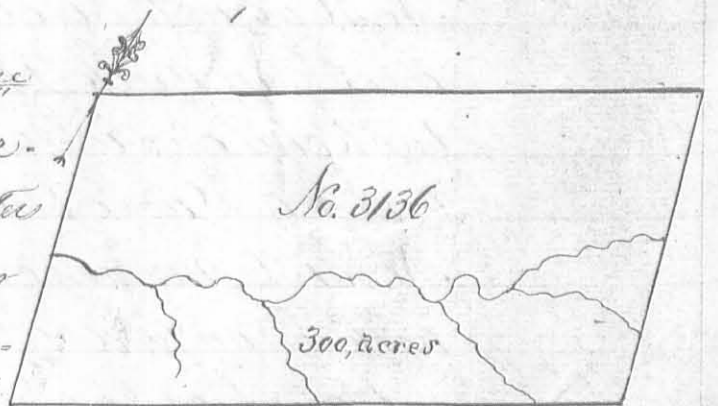
Surveyed for Samuel Wallace his at law to Adam Wallace dec'd 580 acres of land on part of a Military Warrant No. 3195 on the waters of Stony Creek; beginning at three white oaks, northeasterly corner to Thomas Northingtons survey, No. 4399, in the line of Robert Powers survey No. 3683, thence with said line N. 10. W. 150 poles crossing a branch to a red oak hickory and sugar tree, northwesterly corner to said Powers survey in the line of the Representatives of James Parks survey No. 3317, thence with said line S. 80. W. 258 poles crossing several branches to a stake southwesterly corner to said Parks survey in the line of William Miller survey No. 3324, thence with his line and course thereof S. 80. W. 167 poles to a stake in

Sualows line; thence with said line S. 20. E. 496 poles crossing several branches to two burr oaks, thence east 346 poles crossing several branches and passing the Northwest corner of said Northingtons survey at 276 poles and with his north line to the beginning.

Colin McCollum  
John McDonald  
Samuel McCulloch Mkr.

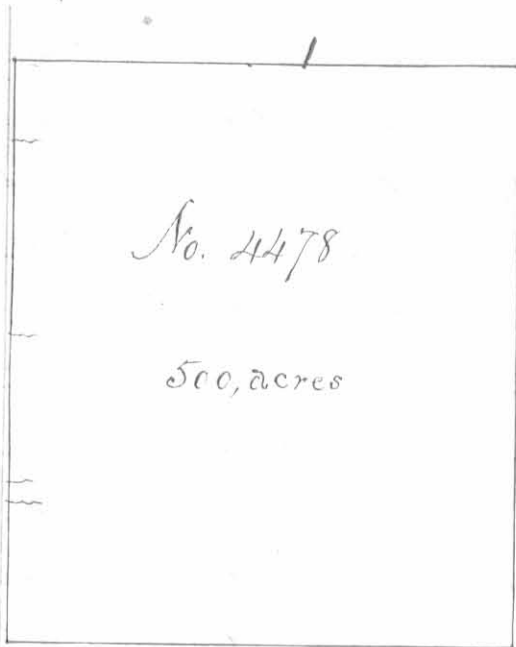
Duncan McArthur, D. S.  
Oct. 30<sup>th</sup> 1806  
April 24<sup>th</sup> 1807.

Surveyed for David Bradford of 300 acres of land on three Military Warrants No 4012, 4032 and 4238 on the waters of Mead river, beginning at two sugar trees in the East line of James Calderwoods survey, No. 3139 running with his line S. 16. E. 160 poles crossing the branch on which Isaac Jones made sugar in the year --- at 80 poles to two beeches and an Ironwood, thence N. 58. E. 315 poles crossing several small branches to a buckeye, white walnut and an ash, thence N. 16 W. 160 poles crossing the branch at 80 poles to two Ironwoods and a beech, thence S. 58 W. 315 poles to the beginning.



John McDonald  
Colin McCollum  
John Asher Mkr.

Duncan McArthur D. S.  
October 31<sup>st</sup> 1804  
February 10<sup>th</sup> 1805

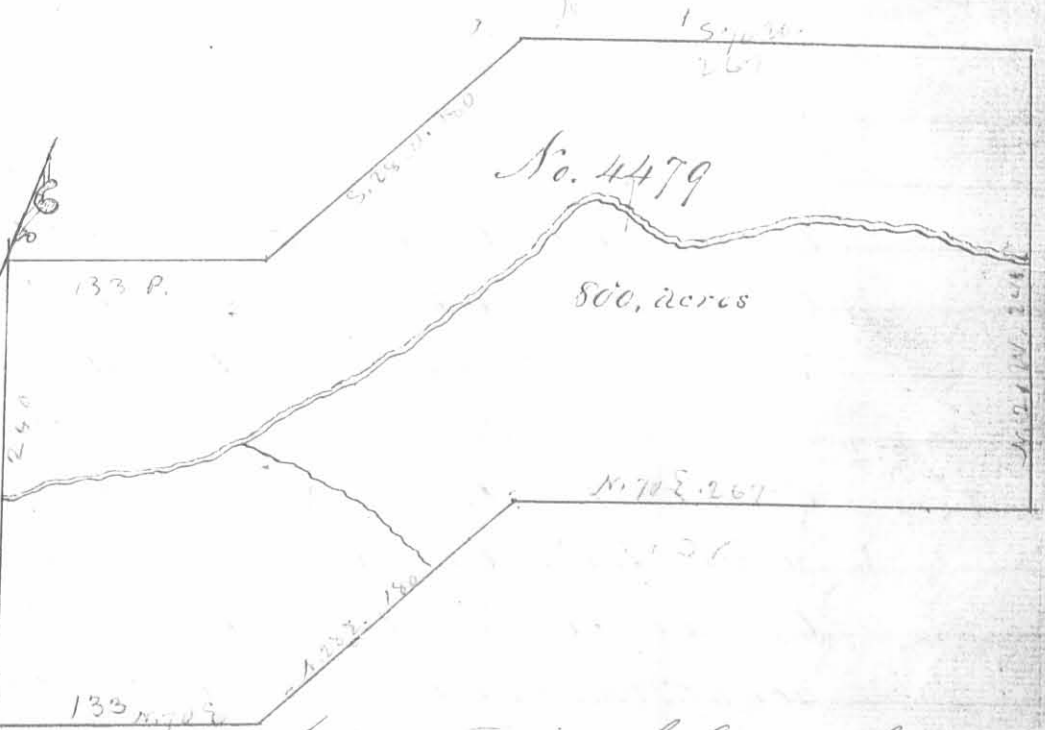


Surveyed for Alexander S Dandridge, 500 acres of land on part of a military warrant No. 1287 on the waters of big Miami; beginning at a sugar tree beech and hickory, northwest corner to said Dandridges survey No 3220 running with his line South 300 poles crossing a small branch, to a beech, white oak sugar tree and cherry tree, thence west 267 poles to a dogwood and black walnut; thence North 300 poles crossing a branch at 174 poles at 158 and one at 260 poles to three sugar trees, thence East 267 poles crossing several branches to the beginning.

John McDonald  
 John M<sup>c</sup>Collum C.C.  
 John Astew Mtr.

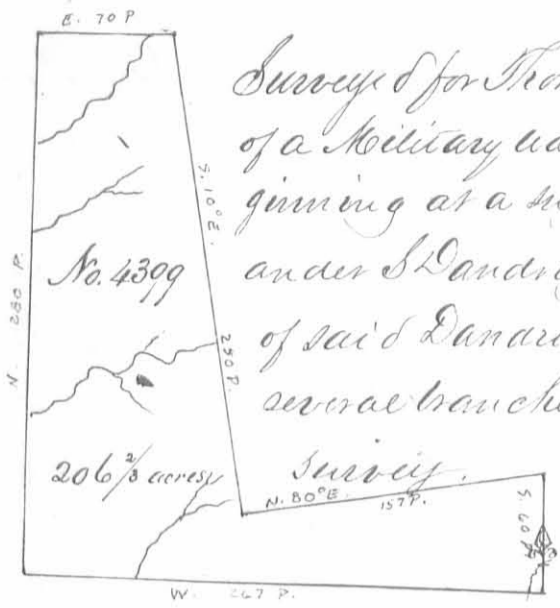
Duncan McArthur D.S.  
 October 30<sup>th</sup> 1804  
 February 15<sup>th</sup> 1805

Surveyed for Thomas Worthington 800 acres of land on part of a Military Warrant No. 4972 on Ten Lons Creek a branch of Mac river. Beginning at a white oak marked 30M in the line run by Israel Sutherland from the head of the little Miami, towards the head of the Scioto running with said line S. 20 E. 240 poles crossing the creek at 120 poles to two white oaks, thence N. 70 E. 133 poles to three hickories, thence N. 28 E. 180 poles crossing a branch to a stake, thence N. 70 E. 267 poles to three black oaks; thence N. 20 N. 240 poles, crossing the creek at 120 poles to two white oaks, a hickory and elm, thence S. 70 N. 267 poles to four hickories, thence S. 28 N. 180 poles to two black oaks and a cherry tree, thence S. 70 N. 133 poles to the beginning.



John McDonald  
 John M<sup>c</sup>Collum C.C.  
 John Astew Mtr.

Duncan McArthur D.S.  
 October 29<sup>th</sup> 1804  
 February 22<sup>nd</sup> 1805



Surveyed for Thomas Worthington ap<sup>pr</sup> 206<sup>2</sup>/<sub>3</sub> acres of land on part of a Military warrant No. 4972 on the waters of big Miami: Beginning at a sugar tree beech and hickory northwest to Alexander S Dandridges survey No 3220, running with the line of said Dandridges survey No. 4478, West 267 poles crossing several branches to three sugar trees corner to said Dandridges thence North 280 poles crossing a branch at 80 one at 180 and one at 220 poles to two Lymus and a white walnut, thence East 70 poles crossing a branch at 60 poles to three white oaks in the line of Robert Powers survey No. 3683, thence with his line S. 10. E. 250 poles crossing a branch at 160 and one at 245 poles to two Lymus, two sugar trees and an elm south west corner to Powers survey, thence with another of his lines N. 80. E 157 poles to a red oak and white oak, thence south 60 poles crossing a branch to the beginning.

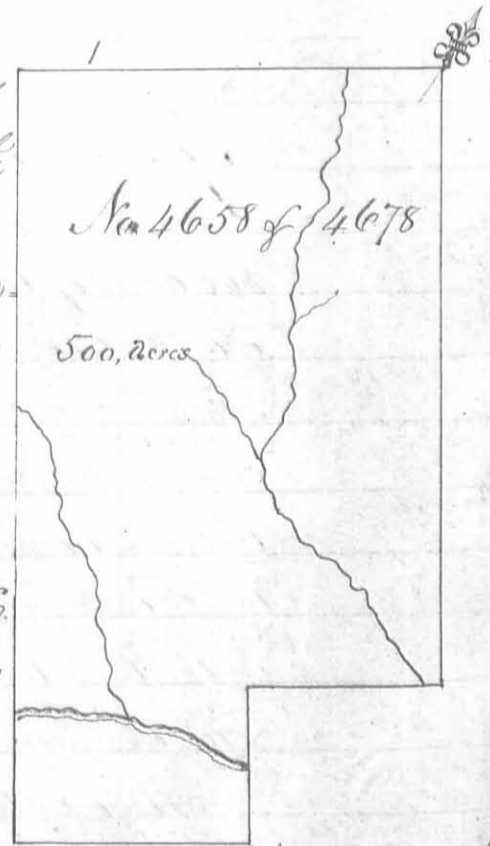
John McDonald 3  
 Colin McCallum 3 C.C.  
 John Aker Mkr.

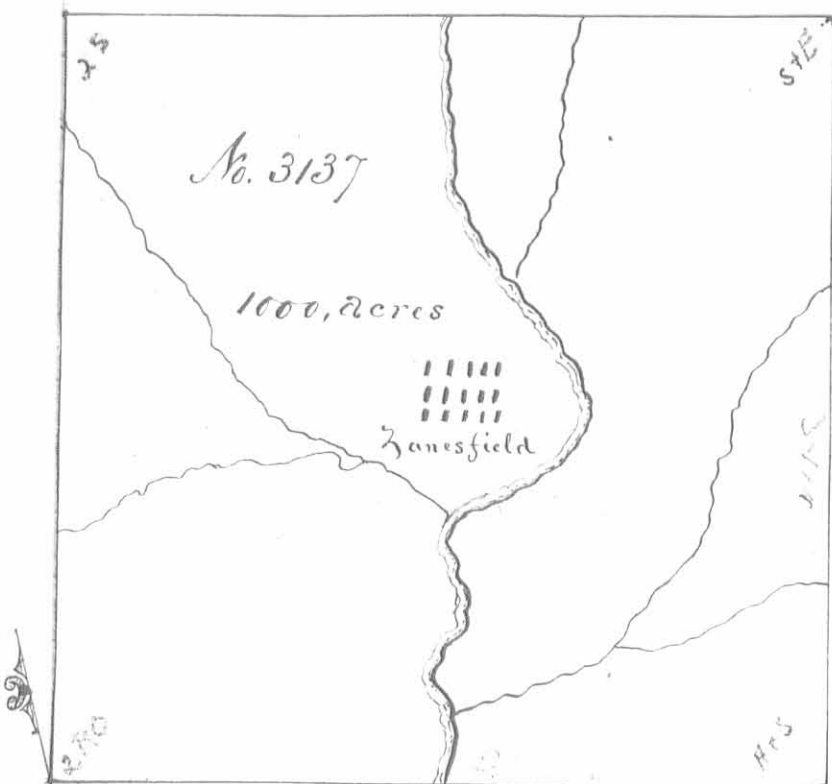
Duncan McArthur D.S.  
 October 30<sup>th</sup> 1804.  
 February 22<sup>nd</sup> 1805.

Surveyed for Benjamin Pajseau ap<sup>pr</sup> 500 acres of land on part of a military warrant No. 5023 on the waters of Darby Creek: Beginning at two elms and a hickory easterly corner to John Holmes survey No. 4263 in the line of David Duncans survey No. 479, running with Duncans line passing his corner and with the line of Clayton Yanceys survey No 3688 passing his corner, S. 53, N. 220 poles crossing a branch at 50 poles to three sugar trees; thence S. 37, E. 400 poles crossing a branch and a creek at 338 poles to a red oak, elm and sugar tree, thence N. 53. E 120 poles to three sugar trees, thence N. 37, N. 80 poles crossing the creek to two sugar trees, thence N. 53. E. 100 poles crossing a branch at 90 poles to a sugar tree in the line of Thomas Millers survey No 4650, thence with his line N. 37, N. 320 poles to the beginning.

William Gibson 3  
 Henry Sturms 3 C.C.  
 John Pajseau Mkr.

James Gallaway Jun<sup>r</sup> D.S.  
 May 6<sup>th</sup> 1805  
 May 7<sup>th</sup> 1805





Surveyed for the Representatives of James Calderwoods dec<sup>d</sup> 1000 acres of land on part of a military warrant No. 4799 on the head branch of Mead river: Beginning at two red oaks running S. 75. E. 400 poles crossing Mead river to an ash and sugar tree. thence N. 15. E. 400 poles crossing two branches to a sugar tree an elm. thence N. 75. W. 400 poles crossing the sugar camp branch and the river to two sugar trees, thence S. 15. W.

400 poles crossing two branches to the beginning.

William Proctor  
Gregory Fayans & Co  
Philip Metherstough M<sup>r</sup>

Lucas Sullivant D.S.  
April 10<sup>th</sup> 1798  
September 26<sup>th</sup> 1799

Surveyed for the Representative of James Calderwood dec<sup>d</sup> 1500 acres of land on part of a military Warrant No. 4799 on the head branches of Mead river: Beginning at two sugar trees North west corner to said Calderwoods survey No 3137, running S. 75. E. 400 poles crossing the head branch of Mead river and sugar camp branch to a sugar tree and elm north east corner to said Calderwoods survey, thence N. 74 E. 65 poles to two sugar trees, thence N. 16. W. 610 poles crossing three branches to two beeches, thence S. 74. W. 480 poles crossing several branches to two beeches, thence S. 16 E. 400 poles crossing three branches to a dogwood and hickory; thence N. 74 E. 65 poles to the beginning.



William Proctor  
Gregory Fayans & Co.  
Philip Metherstough M<sup>r</sup>

Lucas Sullivant D.S.  
April 10<sup>th</sup> 1798  
September 26<sup>th</sup> 1799



Survey for the Representatives of James Calderwood dec<sup>d</sup> 780 acres of land on part of a Military Warrant No. 4799 on the head branch of Mad river; beginning at two red oaks, Southwest corner to said Calderwoods survey No 3137 running with his lower line S. 75 E. 400 poles cropping Mad river to an ash and sugar tree Southeast corner to said Calderwoods survey, thence South 320 poles to a hickory and ash, thence N. 75. W. 400 poles, cropping the river to a stake, thence North 320 poles cropping a branch to the beginning.

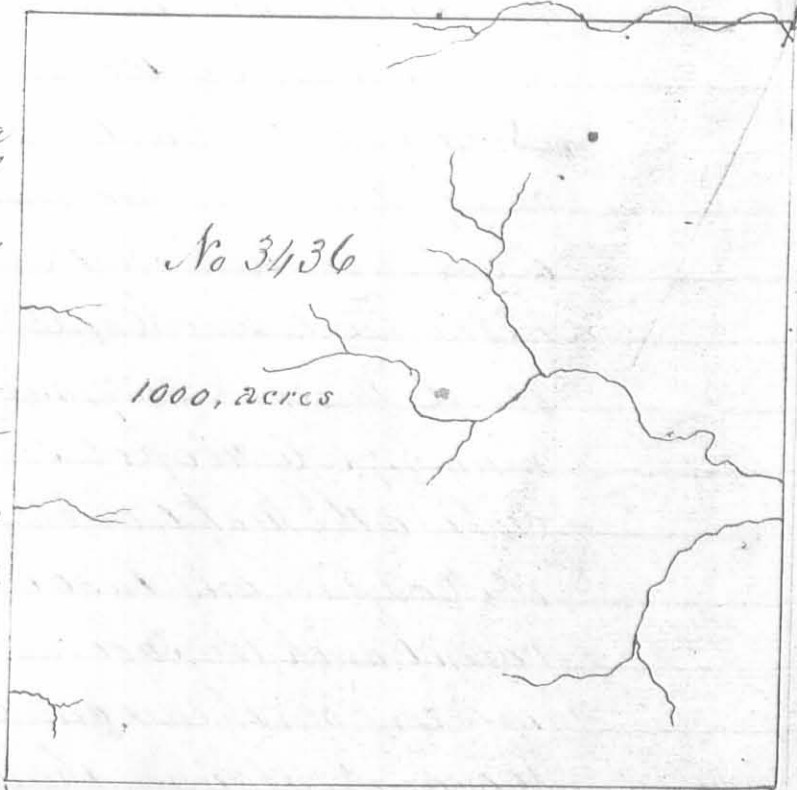
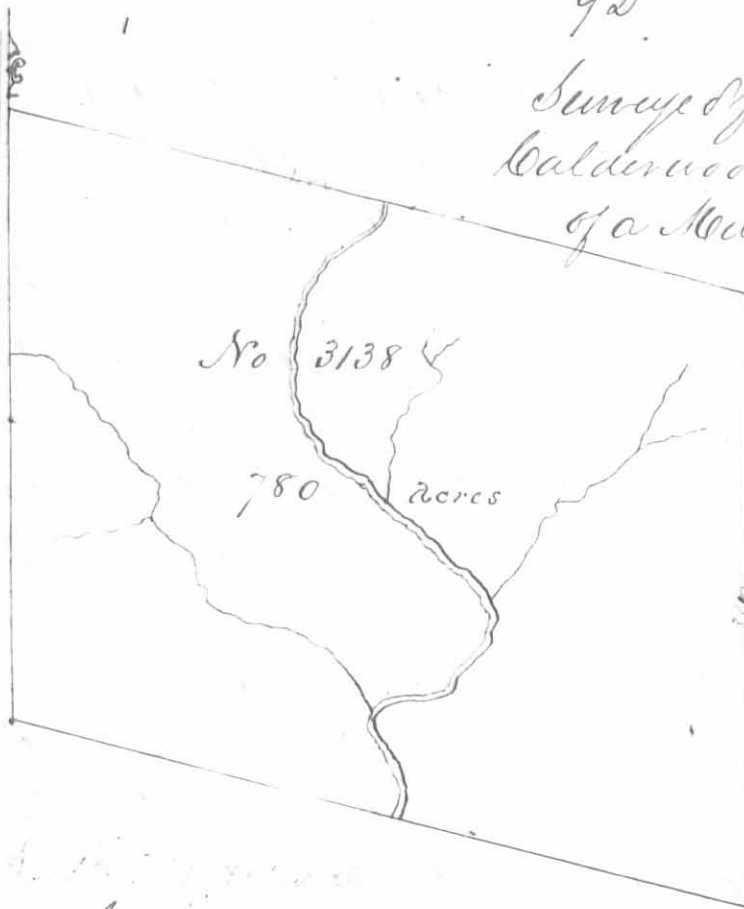
William Proctor  
Gugly Jagers 3 C.C.  
Philip Motherstough Mkr.

Lucas Sullivan D.S.  
April 10<sup>th</sup> 1798  
September 26<sup>th</sup> 1799

Survey for William Cochran a part 1000 acres of land on part of a Military Warrant No. 55 on the waters of Mill Creek a branch of Scioto, beginning at two sugar trees and a beech Southeast corner to William Millers survey No 3325 running S. 10. E. 400 poles cropping a branch at 10, one at 240 and one at 262 poles to two large burr oaks an ash and sugar tree, thence S. 30. W. 400 poles to two beeches and a sugar tree, thence N. 10. W. 400 poles cropping several drains to a hickory poplar and Syc, Southeast corner to said Millers survey No. 3326 and Southwest corner to said Millers survey No. 3325, thence with the line of the last mentioned survey N. 80 E. 400 poles cropping a branch several times to the beginning.

Peter Murphy 3  
William Boyd 3 C.C.  
John Brittle Mkr.

Lucas Sullivan D.S.  
April 4<sup>th</sup> 1799  
September 26<sup>th</sup> 1799





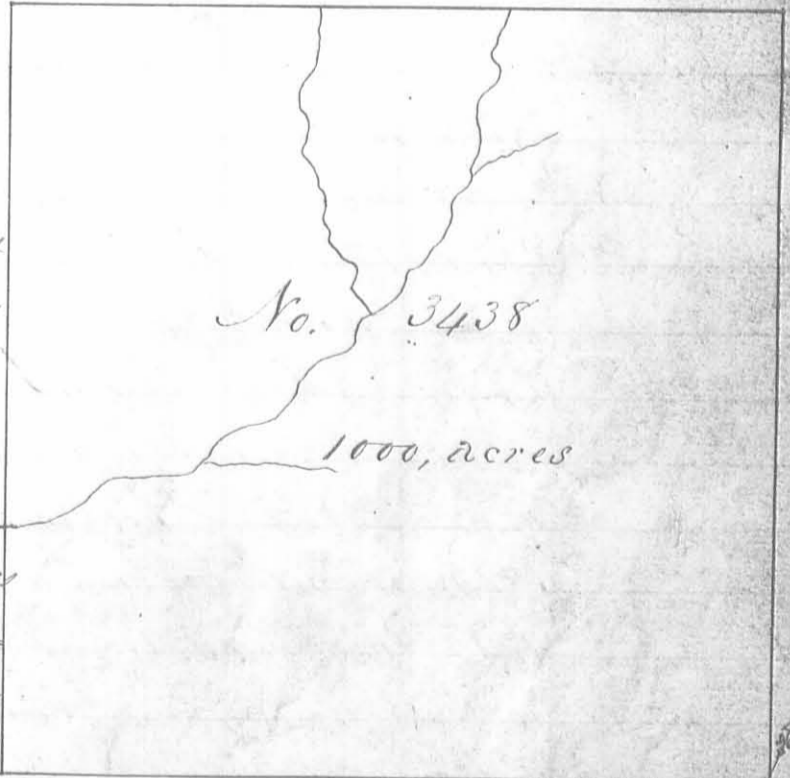
Surveyed for William Cochran  
 approx 1000 acres of land on part of a  
 Military warrant No. 55 on the  
 waters of Mill creek a branch  
 of Scioto; beginning at two beeches  
 and a sugar tree, southwest cor-  
 ner to said Cochran's survey No.  
 3436 running with his line N  
 10 W 400 poles crossing several  
 branches to a hickory poplar  
 and cypress, northwest corner to  
 Cochran's survey southwest  
 corner to William Miller's sur-  
 vey No. 3325 and southeast cor-

ner to said Miller's survey No. 3326, thence with the line of said Mil-  
 ler's survey No. 3326 S. 80 W. 400 poles to three cypresses southwest cor-  
 ner to said survey and southeast corner to said Miller's survey No. 3327  
 thence S. 10 E. 400 poles to two beeches, thence N. 80 E. 400 poles crossing  
 two branches to the beginning

Peter Murphy  
 William Boyd C. C.  
 John Brittle mkr.

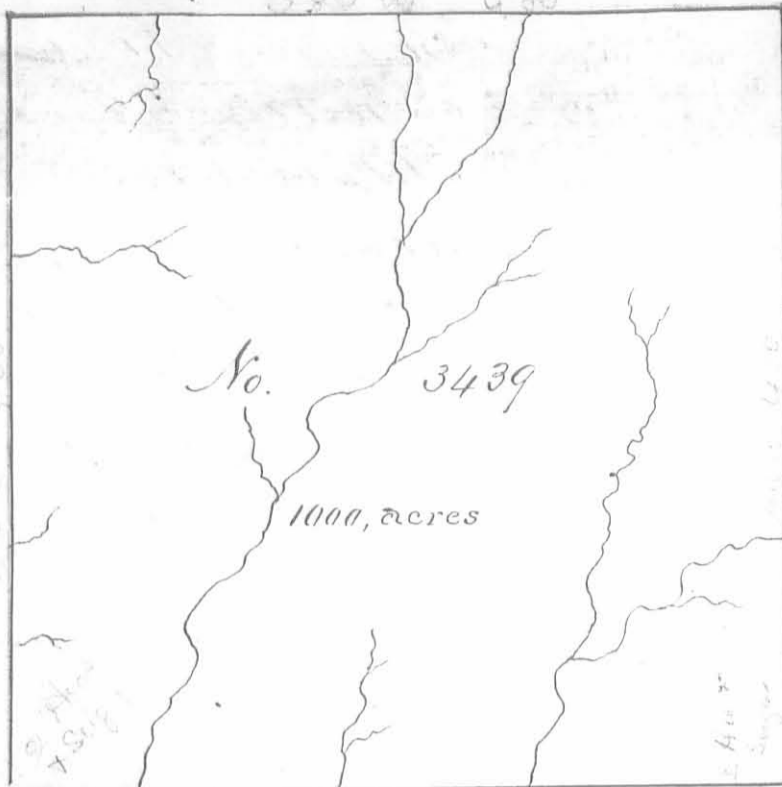
Lucas Sullivan D. S.  
 April 4<sup>th</sup> 1799  
 September 26<sup>th</sup> 1799

Surveyed for William Cochran  
 approx 1000 acres of land on part  
 of Military warrant No. 55  
 on the waters of Mad river. be-  
 ginning at two beeches southwest  
 corner to said Cochran's survey  
 No. 3437 running with his line  
 N. 10. W. 400 poles to three cypresses  
 northwest corner to said survey  
 southwest corner to William Miller's  
 survey No. 3326 and southeast cor-  
 ner to said Miller's survey No. 3327  
 thence with the line of the last men-  
 tioned survey S. 80 W. 400 poles crossing two branches to a white oak  
 ash and hickory, southwest corner to said Miller's survey No. 3327 and southeast corner to John  
 Scott's survey No. 3441, thence S. 10 E. 400 poles crossing a branch to two hickories and a sugar tree, thence N. 80  
 400 poles to the beginning.



Peter Murphy  
 William Boyd C. C. John Brittle mkr.

Lucas Sullivan  
 April 4<sup>th</sup> 1799  
 September 26<sup>th</sup> 1799



Surveyed for William Cochran  
ap<sup>pr</sup> 1000 acres of land on part of a  
Military warrant No. 33 on the  
waters of Mad river; beginning  
at two hickories and a sugar tree  
southwest corner to said Cochran's  
survey No. 3438, running with his  
line N. 10. W. 400 poles crossing a  
branch to a white oak ash and hick-  
ory northwest corner to said Coch-  
ran's survey southwest corner to  
William Miller's survey No. 3327

and southeast corner to John Scott's survey No. 3441, thence with Scott's line  
passing his corner and with the line of said Scott's survey No. 3442 S. 80 W. 400  
poles crossing several branches to a red oak white oak and hickory in  
Scott's line, thence S. 10. E. 400 poles crossing three branches to two hickories  
and a sugar tree, thence N. 80. E. 400 poles crossing several branches to the  
beginning.

Peter Murphy 3  
William Boyce 3 C. C.  
John Britton M. L. V.

Lucas Sullivan D. S.

April 4<sup>th</sup> 1799  
September 26<sup>th</sup> 1799

Surveyed for George McCordie ap<sup>pr</sup>  
1000 acres of land on nine Military  
Warrant No. 4776. 2840. 4753. 4814. 4782  
4812. 4813. 4788 and 2839 on Mill Creek  
Beginning at three beeches and an  
ash on the east bank of the creek  
running S. 10. E. 400 poles crossing  
the creek at 20 a branch at 120 and  
at 180 and one at 390 poles to a beech  
ash, white oak and hickory, thence  
S. 80. W. 400 poles crossing a branch  
to two large sugar trees, thence N  
10 W. 400 poles crossing two branches  
to three sugar trees and a hickory, thence N. 80. E. 400 poles crossing a large  
branch at 220 poles and the creek to the beginning.

Peter Murphy 3  
William Boyce 3 C. C.  
John Britton M. L. V.



Lucas Sullivan D. S.

April 3<sup>rd</sup> 1799  
September 16<sup>th</sup> 1799

No. 3161  
188 2/3 acres

Surveyed for George McCredie apr 188 2/3 acres of land on part of a Military warrant No. 4758 on the waters of Beaver run a branch of Darby's Creek; Beginning at a large white ash, lynn and sugar tree northwest corner to Philip Staughters survey No. 3154 running S. 52 W. 222 poles to two beechs thence N. 38 W. 135 poles to two beechs, thence N. 52 E. 222 poles to two sugar trees, thence S. 38 E. 135 poles to the beginning.

Phillip Mootherbough 2  
Robert Silvy 3  
Abraham Riddle m.k.r.

Lucas Sullivan D.S.  
September 11<sup>th</sup> 1799  
September 16<sup>th</sup> 1799

Surveyed for Holland Coney 640 acres of land on part of a Military Warrant No. 2504 on the waters of Mad River, beginning at two black oaks, a cherry tree and white oak, running S. 21 E. 320 poles to two black oaks, thence N. 69 E 320 poles to an ash and sugar tree, thence N. 21 W. 320 poles to a red oak and ash, thence S. 69 W. 320 poles to the beginning.

William Proctor 3  
Grigory Fagan 3 D.S.  
Phillip Mootherbough m.k.r.

No. 3221  
640 acres

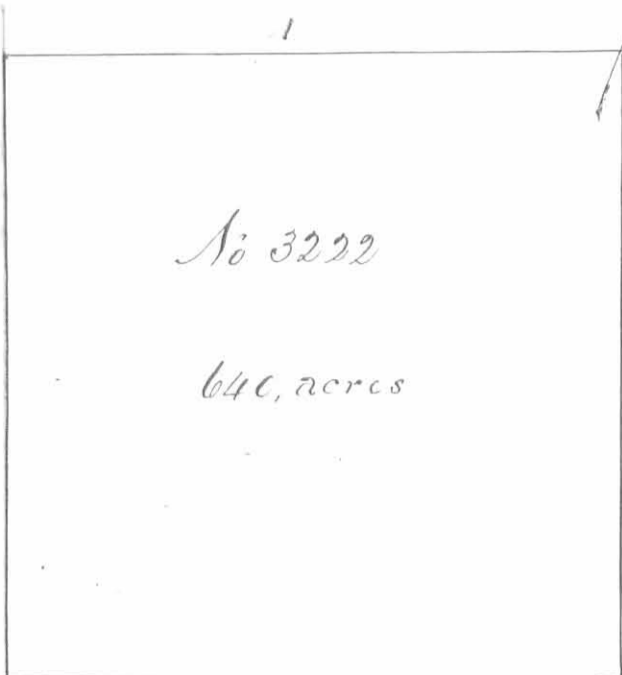
Lucas Sullivan D.S.  
May 10<sup>th</sup> 1798  
September 28. 1799



Surveyed for Charles Humphreys apr 400 acres of land on a Military warrant No. 4856 on Mill Creek a branch of Scioto; Beginning at three beechs and an ash Northeast corner to George McCredie's survey No. 3314 running with his line S. 10 E 400 poles, crossing the creek at 20 poles a branch at 120, one at 180 and one at 390 poles to a beech ash and white oak and hickory southeast corner to said McCredie survey, thence N. 80 E. 160 poles, crossing the creek at 140 poles to a white walnut beech and sugar tree, thence N. 10 W. 400 poles to a hickory two sugar trees and an Ironwood, thence S. 80 W. 160 poles to the beginning.

William Boyd 2  
Peter Murphy 3  
John Brittle m.k.r.

Lucas Sullivan D.S.  
April 1<sup>st</sup> 1799  
September 28<sup>th</sup> 1799



No 3222

640, acres

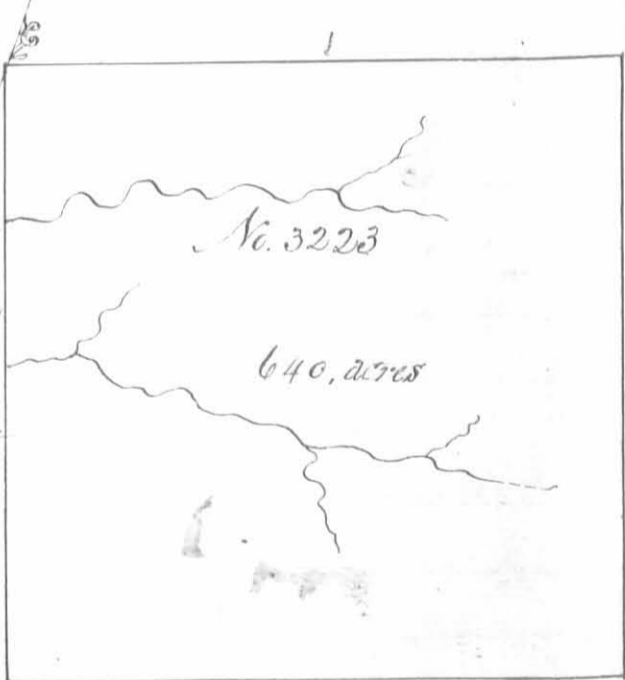
Surveye for Holland & Nancy 640 acres of land on part of a Military Warrant No. 2804 on the waters of Mead River: Beginning at two black oaks, a white oak and Cherry tree north west corner to said Nancy's survey No 3221 running with his line S. 21. E. 320 poles to two black oaks, south west corner to said Nancy's survey, thence S 69 W. 320 poles to two white oaks, thence N. 21. W 320 poles to a black oak and hickory, thence N.

69 E. 320 poles to the beginning.

William Proctor  
 Grigby Fagans  
 Philip Motherstough M.K.R.

Lucas Sullivan D.S.  
 May 15<sup>th</sup> 1798  
 September 28<sup>th</sup> 1799

Surveye for Holland & Nancy 640 acres of land on part of a Military Warrant No. 2804 on the waters of Mead river: Beginning at two black oaks southwest corner to said Nancy's survey No. 3221 running S 21. E. 320 poles, crossing a branch at 80 and one at 160 poles to a large Red oak, Black walnut and sugar tree, thence N. 69. E 320 poles to a sycamore, walnut and elm on the side of a branch, thence N 21 W 320 poles to an ash and sugar tree southeast corner to said Nancy's survey, thence with said line S. 69 W. 320 poles to the beginning.

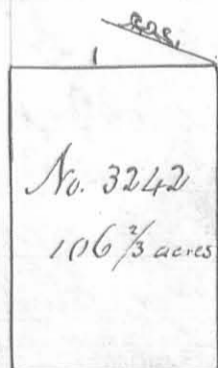


No. 3223

640, acres

William Proctor  
 Grigby Fagans  
 Philip Motherstough M.K.R.

Lucas Sullivan D.S.  
 May 15<sup>th</sup> 1798  
 September 28<sup>th</sup> 1799



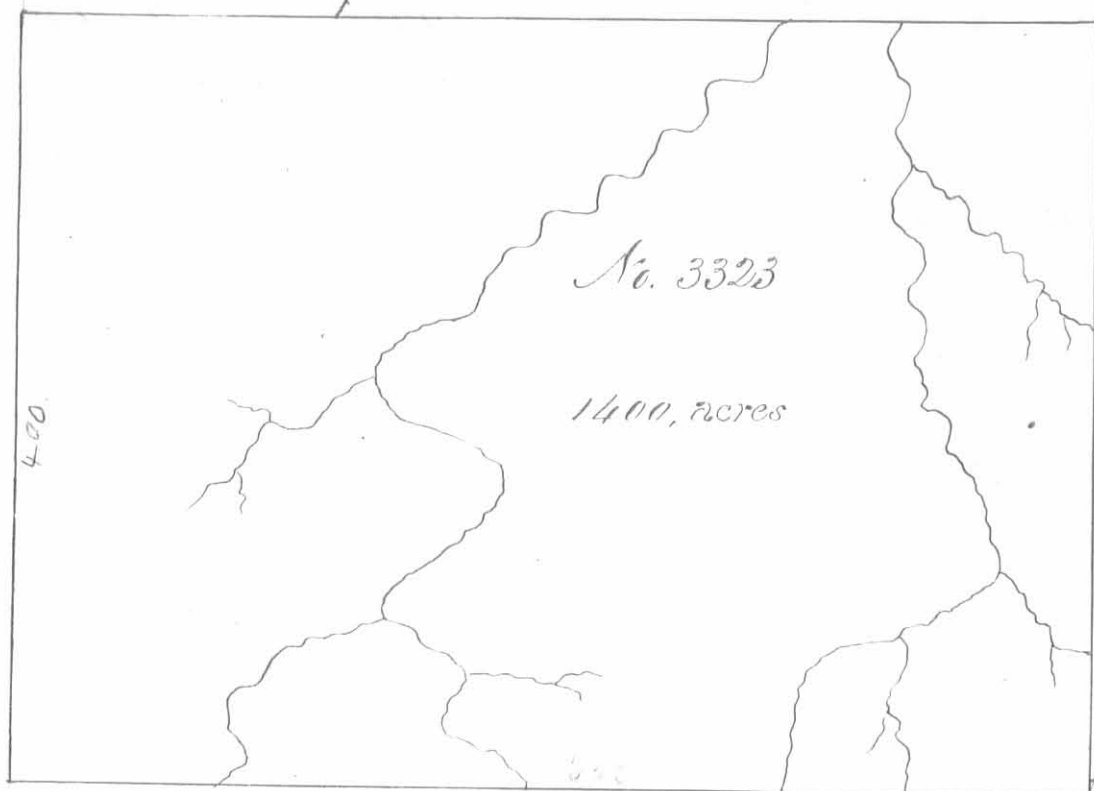
No. 3242

106 2/3 acres

Surveyed for Holland & Nancy 106 2/3 acres of land on part of a military warrant No. 2804 on the waters of Mead river: Beginning at two black oaks a white oak and cherry tree, northwest corner of said Nancy's survey No 3221 and northeast corner to said Nancy's survey, No 3222 running with the line of the last mentioned survey S. 69. W. 160 poles to two white oaks in said line, thence N. 21. W. 107 poles to a white oak and hickory, thence N 69 E. 160 poles to a black oak and hickory, thence S 21 E. 107 poles to the beginning.

William Proctor  
 Grigby Fagans  
 Philip Motherstough M.K.R.

Lucas Sullivan D.S.  
 May 15<sup>th</sup> 1798  
 September 28<sup>th</sup> 1799



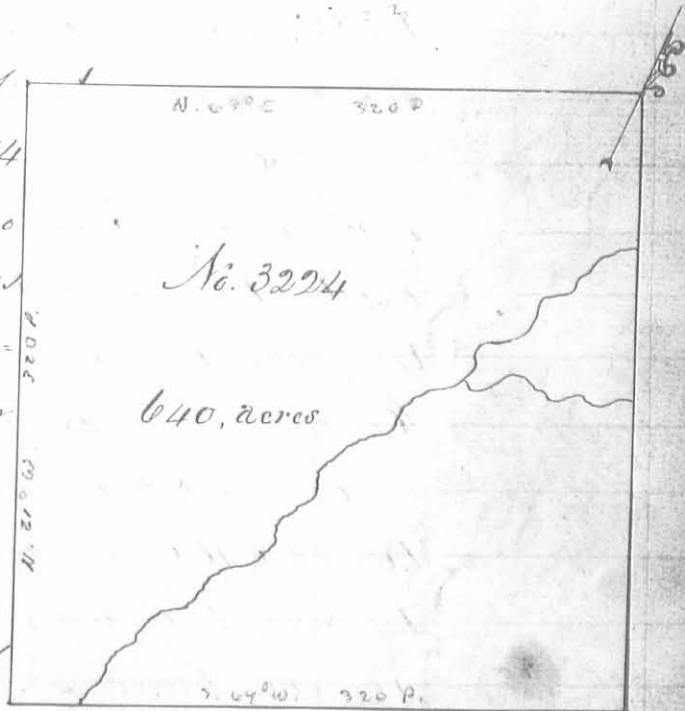
Surveyed for James  
McClain 1400 acres of  
land on part of a Military  
Warrant No 196  
on the waters of Mill  
creek a branch of Scioto  
Beginning at two  
large Sugar trees south  
west corner to George  
McCordis survey No  
3314 running with  
his line N. 10 W. 400  
poles crossing two

branches to three sugar trees and a hickory Northwest corner to said Mc  
Cordis thence S. 80. W. 560 poles crossing a branch at 100 and one at 160  
poles to two ash and an elm in the edge of a large swamp, thence  
S. 10. E. 400 poles crossing several drains to two sugar trees and an Ironwood  
near the swamp, thence N. 80. E. 500 poles crossing four branches to the  
beginning.

Peter Murphy 3  
William Boyd 3 6 6  
John Brittle M.R.

Lucas Sullivan D.S.  
April 1<sup>st</sup> 1799  
September 25<sup>th</sup> 1799

Surveyed for Hollan & Haney 640 acres of  
land on part of a Military Warrant No 2864  
on the waters of Mead river. Beginning at two  
black oaks southwest corner to said Haney's  
survey No 3221, southeast corner to said Ha-  
neys survey No 3222 and northwest corner  
to said Haney's survey No. 3223 running  
with the line of the last mentioned survey  
S. 21. E. 320 poles crossing a branch at 80  
and one at 160 poles to a red oak, black  
walnut and sugar tree southwest corner  
to said survey No. 3223, thence S. 69 W. 320 poles crossing the branch to  
two elms and a black walnut near the branch, thence N. 21. W. 320 poles  
to two white oaks southwest corner to said Haney's survey No. 3222  
thence with said line N. 69. E. 320 poles to the beginning.



William Proctor 3  
Gregory Fagan 3 6 6  
Philip Matherstough M.R.

Lucas Sullivan D.S.  
May 15<sup>th</sup> 1798  
September 25<sup>th</sup> 1799



Surveyed for William Miller  
1000 acres of land on part of a Military  
Warrant No 151 on the waters  
of the Miami; beginning at an  
ash elm and iron woods southwest  
corner to Laylor Ganceys Survey No.  
3322, running with his line N 10 W  
400 poles crossing two branches to two  
ashes and a red elm northwest corner  
to said Ganceys survey, thence S 80  
W. 400 poles to two white oaks two red  
oaks and a black oak, thence S  
10, E. 400 poles crossing a branch

at 180 and on at 250 poles to two black oaks a red oak and sugar tree  
thence N. 80 E 400 poles to the beginning.

Peter Murphy  $\frac{3}{3}$   
William Boyd  $\frac{3}{3}$  Co  
John Britte M.k.v.

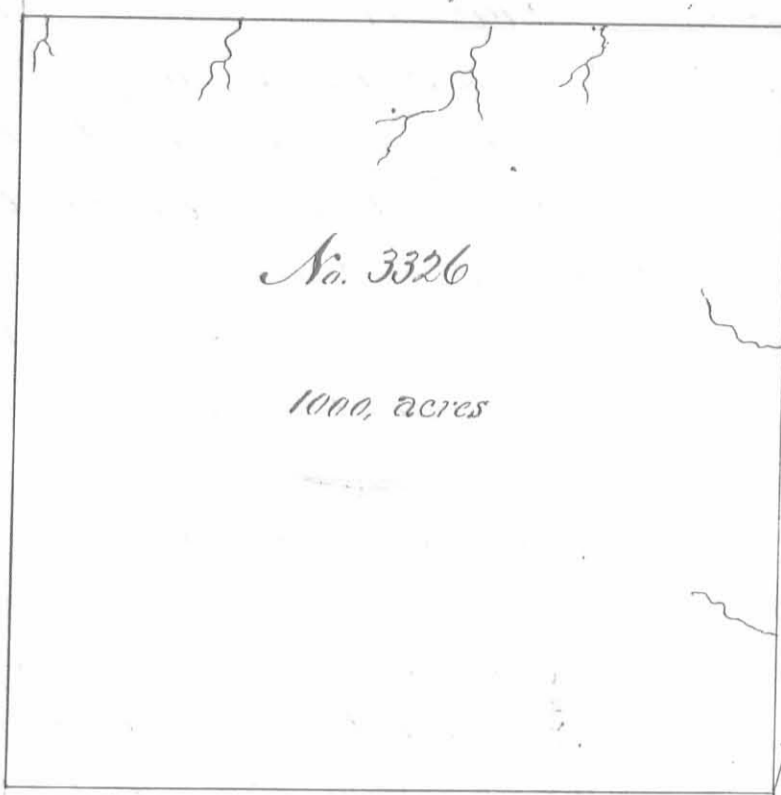
Lucas Sullivan D.S  
April 2<sup>nd</sup> 1799  
September 30<sup>th</sup> 1799

Surveyed for William Miller 1000 acres  
of land on part of a Military warrant  
No. 151 on the waters of Mill Creek a  
branch of Scioto; beginning at a white  
oak and hickory southeast corner to Geo-  
rge McCordis survey No. 3314 running  
with his line S. 80, W. 400 poles cross-  
ing two branches to two large sugar  
trees southwest corner to said Mc-  
Cordis survey and southeast corner  
to James Mobins survey No. 3323,  
thence S. 10, E. 400 poles crossing two  
branches to a poplar, lypin and  
hickory, thence N. 80. E. 400 poles crossing a branch several times to  
two sugar trees, and a beech, thence N. 10, W. 400 poles crossing a  
branch to the beginning.

Peter Murphy  $\frac{3}{3}$   
William Boyd  $\frac{3}{3}$  Co.  
John Britte M.k.v.



Lucas Sullivan D.S  
April 2<sup>nd</sup> 1799  
September 30<sup>th</sup> 1799

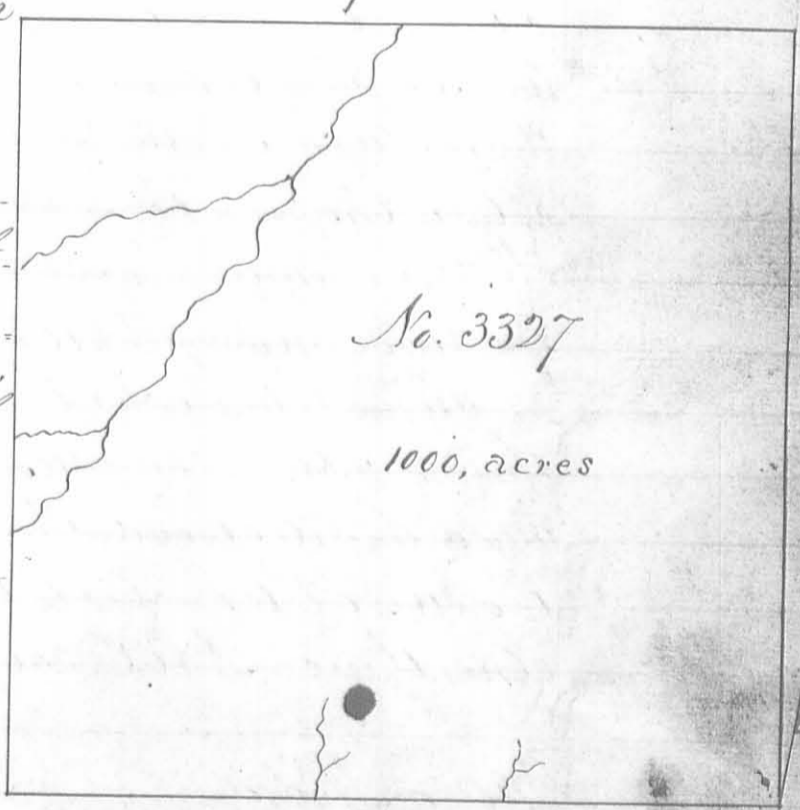


Surveyed for William Miller  
 1000 acres of land on part of a Military  
 warrant No. 151 on the waters  
 of Mill creek a branch of Scioto  
 Beginning at a poplar lynn and  
 hickory southwest corner to said  
 Millers survey No. 3325 running  
 with his line N. 10. W. 400 poles cross-  
 ing two branches to two large su-  
 gar trees Northwest corner to said  
 Millers survey No. 3325 and south-  
 east corner to James Malons sur-  
 vey No. 3323, thence with Malons  
 line S. 80. W. 400 poles crossing three branches to two ash and a sugar tree  
 in Malons line on the bank of a drain; thence S. 10. E. 400 poles to three  
 lynn; thence N. 80. E. 400 poles to the beginning.

Peter Murphy  
 William Boyd C.C.  
 John Britte m.k.v.

Lucas Sullivan D.S.  
 April 3<sup>rd</sup> 1799  
 September 30<sup>th</sup> 1799

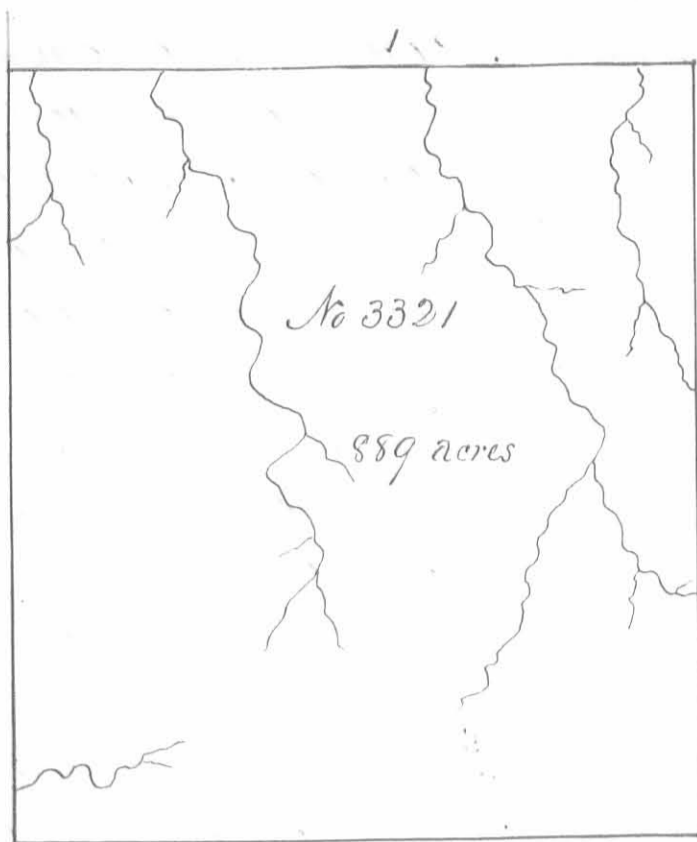
Surveyed for William Miller  
 1000 acres of land on part of a  
 Military warrant No. 151  
 on the waters of the Scioto; Be-  
 ginning at three lynn southwest  
 corner to said Millers sur-  
 vey No. 3326 running with his  
 line N. 10. W. 400 poles to two  
 ash and a sugar tree on the  
 bank of a drain Northwest  
 corner to said Millers survey  
 and in the line of James Ma-  
 lons survey No. 3323; thence  
 with Malons line passing his corner and with the line of Saylor  
 Yanceys survey No. 3320 S. 80 W. 400 poles crossing several branches  
 and a swamp to a buckeye, hickory and sugar tree, thence S. 10. E.  
 400 poles, crossing several branches to a white oak, hickory and  
 ash; thence N. 80. E. 400 poles crossing several drains of Mead river  
 to the beginning.



Peter Murphy  
 William Boyd C.C.  
 John Britte m.k.v.

Lucas Sullivan D.S.  
 April 3<sup>rd</sup> 1799  
 September 30<sup>th</sup> 1799





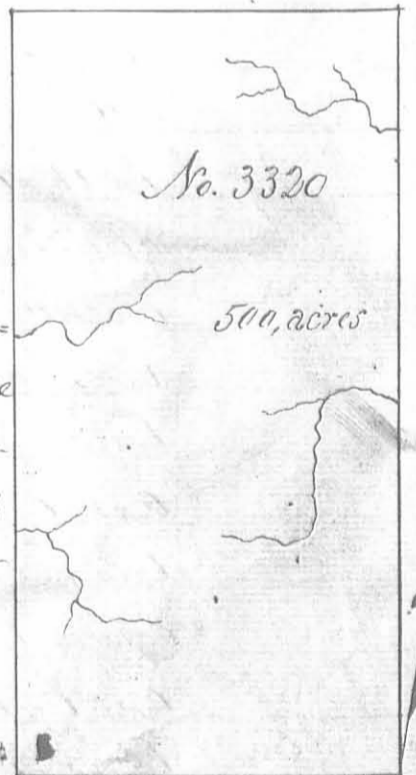
Surveyed for Layton Yancey 889 acres of land on part of a Military Warrant No. 2921 on the waters of Miami; beginning at two ash, a hickory and elm Southwest corner to said Yanceys survey No 3320, running with his line N. 10 N. 400 poles crossing two branches to two sugar trees an Iron wood, and dogwood, northwest corner to said Yanceys survey No. 3320, thence S. 80. W. 356 poles crossing a branch at 30. one at 140, one at 280 and one at 350 poles to an

ash, Iron wood, and dogwood, thence S. 10. E. 400 poles crossing two branches to an ash, lynn and two beech, thence N. 80. E. 356 poles, crossing a branch to the beginning.

Peter Murphy 3  
William Boyd 3 60  
John Brittle m.k.v.

Lucas Sullivan D.S.  
April 2<sup>5</sup> 1799  
October 3<sup>5</sup> 1799

Surveyed for Layton Yancey 500 acres of land on part of a Military Warrant No. 2921 on the waters of Scioto: Beginning at two lynn 156 poles S. 80. W. from the south west corner of James Mcabones survey No. 3323 running along the edge of a large swamp N. 10 N. 400 poles crossing several drains to two ash, two sugar trees and a buckeye thence S. 80. W. 200 poles to two sugar trees an Iron wood and dogwood, thence S. 10. E. 400 poles crossing several branches to two ash, a hickory and elm, thence N. 80. E. 200 poles to the beginning.



William Boyd 3  
Peter Murphy 3 C.C.  
John Brittle m.k.v.

Lucas Sullivan D.S.  
April 1<sup>25</sup> 1799 -  
October 3<sup>5</sup> 1799 -