

No. 7117

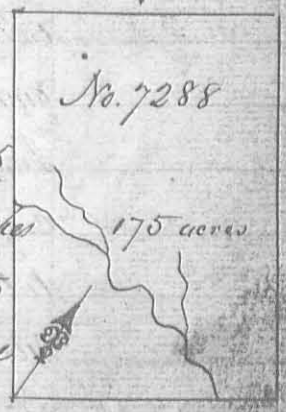
1000, acres

Surveyed for James Galloway Junr of 1000 acres of land on part of a Military Warrant No. 5661 on the waters of Darby's Creek: Beginning at a hickory and Sugar tree Northwestly corner to John McKinnon Survey No. 5049 in the line of Benjamin Stubblefields entry No. 3231 running with Stubblefields line N. 21 W. 36 poles to two blue ashes a sugar tree and two dead Mulberry Northeast corner to said Stubblefields entry and southeast corner to Augustine Smith's Survey No. 3230, thence N. 15 E. 660 poles crossing a branch at 44 on at 114 and on at 188 poles to a beech elm and dogwood; thence N. 55 E. 294 poles to a white oak, beech elm and sugar tree in the line of Robert Power Survey No. 3680; thence with his line S. 38 E. 34 poles crossing a branch at 14 poles to a white walnut, buckeye and sugar tree in said line; and northerly corner to Duncan McArthur's Survey No. 4953; thence with McArthur's line S. 52 N. 218 poles to two beech, a sugar tree and hickory Westerly corner to said McArthur's survey; thence with another of his lines S. 38 E. 380 poles crossing a branch at 200 poles to two sugar trees, a beech and white oak, in the edge of a pond southerly corner to said McArthur's survey; thence S. 52 N. 611 poles crossing a large branch at 530 poles to the beginning.

Job Sharp
 Caleb Ballinger C.C.
 William Towsley Mkr.

James Galloway Junr D.S.
 July 20th 1811.
 August 30th 1811.

Surveyed for James Galloway Junr of 175 acres of land on part of a Military Warrant No 5958 on the waters of Otter Creek a branch of Mile Creek; beginning at two blue ashes and a hickory easterly corner to John Bairds survey No. 5875 running with his line N. 38 W. 200 poles, crossing a branch at 100 poles to two beeches and a sugar tree northerly corner to said survey; thence N. 52 E. 140 poles to two sugar trees and a buckeye; thence S. 38 E. 200 poles to a walnut, buckeye sugar tree and hickory; thence S. 52 W. 140 poles, crossing the branch at 30 poles to the beginning.



No. 7288

175 acres

Alexander Kerr
 James Stevens C.C.
 Joshua Sharp Mkr.

James Galloway Junr D.S.
 March 4th 1812
 March 18th 1812

Surveyed for James Galloway Junr Apr 9 30
 acres of land on part of a Military Warrant No 5661
 on the waters of Darby's Creek; beginning at a hicko-
 ry and sugar tree Northwestly corner to John McKennys
 survey No. 5049 in the line of Benjamin Stubblefield sur-
 vey No 3231, thence with his line N. 21 W 36 poles to two
 blue ashes and a sugar tree Northeast corner to said
 Stubblefields survey and southeast corner to Au-
 gustine J Smiths survey No. 3230 thence
 N. 15. E. 640 poles crossing several bran-
 ches to an elm beech and dogwood
 thence N. 55 E, 291 poles to an elm
 beech, sugar tree and white oak
 in the line of Robert Powers survey
 No. 3680, thence with his line S. 38, E. 12
 poles to a white walnut, buckeye and
 sugar tree in said line Norththly corner
 to Duncan McArthur's survey No. 4953
 thence with said McArthurs line S. 52, W.
 218 poles to two beeches a hickory and sugar
 tree westerly corner to said McArthurs survey
 thence with another of his lines S. 38 E 390 poles
 crossing several branches to two sugar trees, a beech
 and white oak in the edge of a pond, southerly corner
 to said survey; thence S. 52, W. 593 poles crossing a branch
 to the beginning.

No. 7117
 930, acres

Set Sharp
 Caleb Backinger C.C.
 William P Sharp M.k.r.

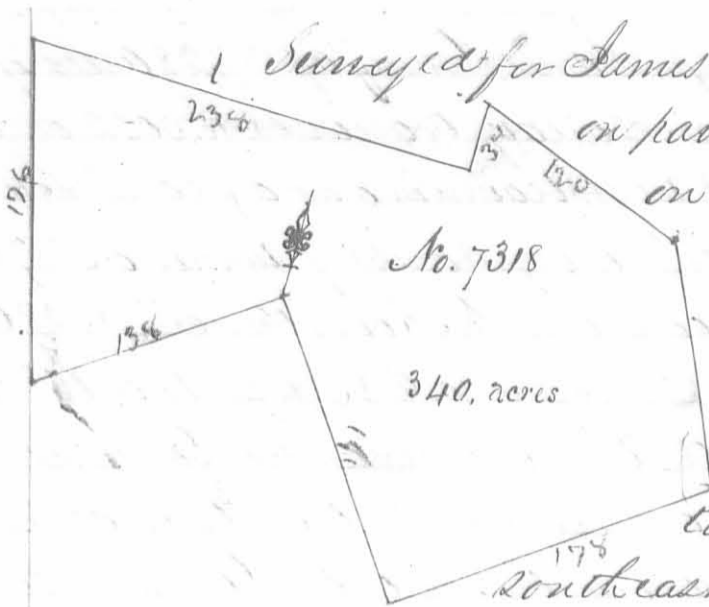
James Galloway Junr D.S.
 May 20th 1832
 May 25th 1832

Surveyed for James Galloway Junr of 250 acres of land on
 part of three Military Warrants viz: 160 acres on No 5874. 50 acres
 on No. 5875 and 40 acres on No. 5827 on the waters of Mad river. Be-
 ginning at a blue ash white walnut and hickory southwest corner to
 Thomas Hott's survey No 2674 running with his line N 80 E 250 poles
 crossing a branch at 30. one at 44 one at 102 one at 174 and one at 170 poles
 to two hickories and a beech in said line and corner to John McDonalds
 survey No. 5088, thence with M Donalds line S. 38, E. 122 poles to three beeches and a sugar tree in said line, thence
 S. 52, W. 153 poles crossing a branch at 74 poles to two sugar trees and a lym on the south side of a dip gut, thence S
 65 W. 122 poles to a stake, crossing a branch at 108 poles, thence N. 25 W. 216 poles crossing several branches to the beginning.



Richmond Measum
 Benjamin Watkins
 William P. Sharp M.k.r.

James Galloway Junr D.S.
 August 5th 1811
 August 30th 1811



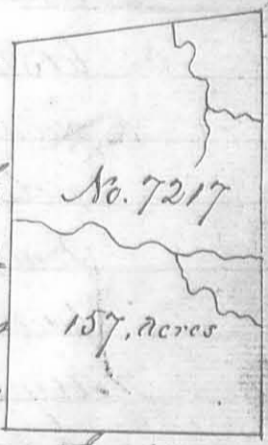
Surveyed for James Galloway Junr Apr 340 acres of land on part of two Military Warrants, 120 acres on No. 5827 and 220 acres on No. 5973 in the waters of Mead river; beginning at three sugar trees Northeastly corner to Thomas Parks survey No. 4497 running with his line S. 69 W 138 poles to two sugar trees and a white walnut Southeast corner to James Mc Nutts survey

No. 4195 & 4604; thence with his line N 1 W 176 poles to two buckeyes and an elm corner to said Mc Nutt in the line of James Davis survey No. 3216; thence with Davis line S. 75. E. 238 poles to a lynn Southeast corner to said Davis survey, thence with another of his lines N. 15 E 34 poles to a beech sugar tree and buckeye; thence S. 55, E 120 poles to two beeches and an ash corner to Benjamin Roipeau's survey No. 5812, thence with his line S. 11. E. 128 poles to two sugar trees and a hickory in the line of said Roipeau's survey No. 4676, thence with said line S. 69. W 178 poles to two beeches and a sugar tree in the line of said Parks survey; thence with said line N. 21, W 171 poles to the beginning.

Peter Mearns 3
William Thom 3 C.C.
Samuel Mearns M.k.r.

James Galloway Junr L.S.
March 14. 1812
March 18. 1812

Surveyed for Benjamin W Ladd and James Bamett Apr 157 acres of land on part of a Military Warrant No. 5759 vizt Ladd 120 acres and Bamett 37 acres on the waters of Mead river; beginning at a blue ash white walnut and buckeye south west corner to Thomas Holts survey No. 2674 Southeast corner to David Bradfords survey No. 3136 and Northwestly corner to James Galloway Junr survey No. 7141 running with Galloway's line S. 25 E. 220 poles crossing several branches to a stake Southwesterly corner to his survey; thence S 65 W. 128 poles to two small beeches and a hickory southerly corner to the representatives of Richard Calls survey No. 7161, thence with Calls line N. 25. W. 204 poles crossing a branch at 112 poles to two blue ashes and a hickory corner to said Calls survey in said Bradfords line thence with said line N. 58. E 129 poles crossing a branch at 82 poles to the beginning.



Benjamin Watkins 3
Richard Mearns 3 C.C.
Caleb Ballinger M.k.r.

James Galloway Junr L.S.
March 14. 1812
March 19. 1812

Surveyed for James Conny of 228 acres of land on part of a Military warrant No. 5052 on the waters of Head river; beginning at a stake southwesterly corner to Fepe Davis survey No. 4497 running N 76 E 133 poles to a black oak and hickory; thence N. 28 E 95 poles to two white oaks, thence S. 20. E 85 poles to a white oak and black oak in the line of Alexander Dunlaps survey No. 4331; thence S. 70. W 105 poles to three burr oaks Northwest corner to said survey, thence with Dunlaps line S. 23. E 281 1/2 poles to a stake in a barn; thence S. 70 W. 114 poles to a hickory in Sudlows line; thence N 20 W 301 1/2 poles to the beginning.

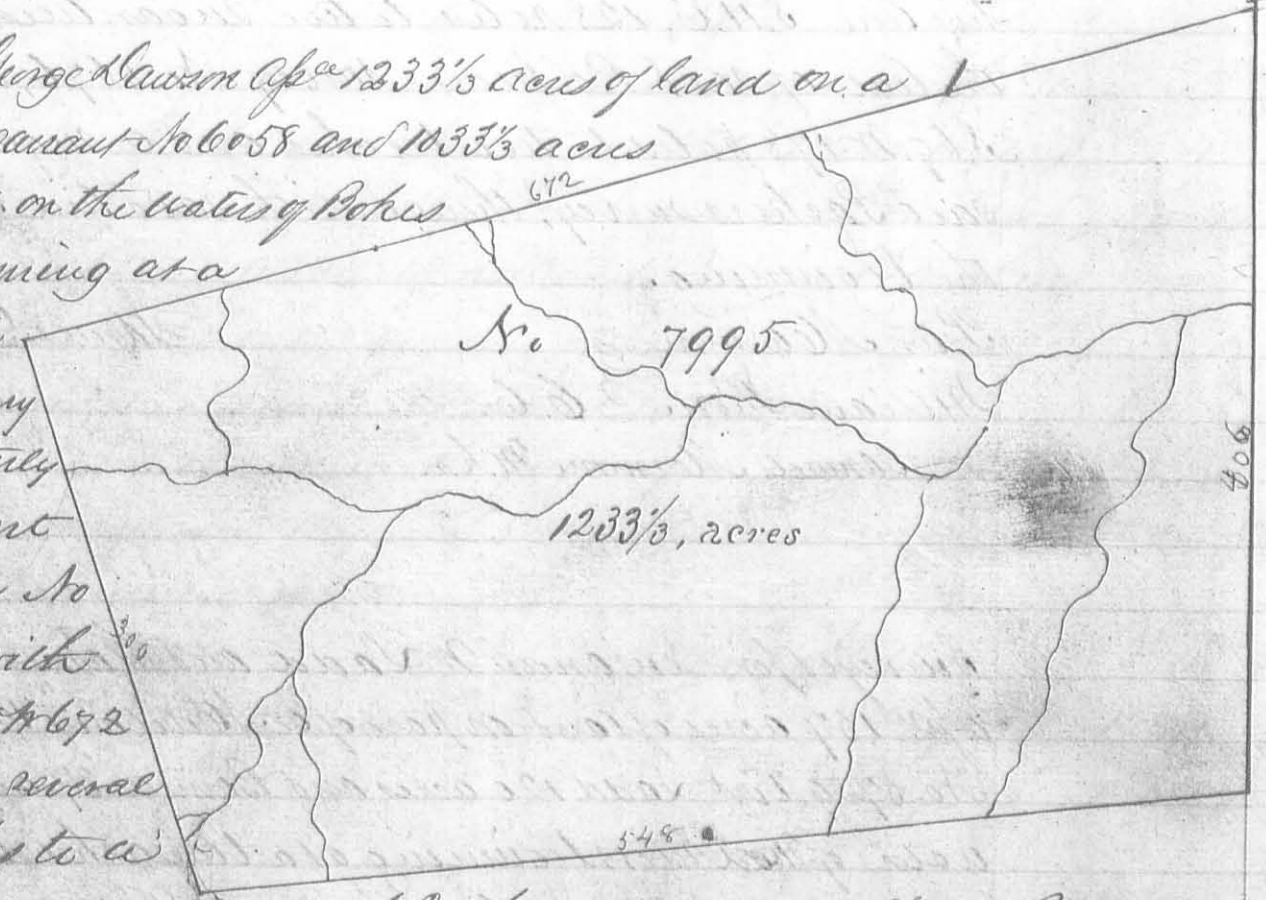
William Davis
 William Southard
 John Bangers M.R.

James Conny D.S.
 January 20. 1812
 April 13. 1812

Surveyed for George Lawson of 1233 1/3 acres of land on a Military warrant No 6058 and 1033 1/3 acres part of 6038 on the waters of Pokes creek: Beginning at a stake in the Indian Boundary line Northwesterly corner to Robert Means survey No 4154, thence with said line S 80 W 672 poles crossing several small branches to a buckeye sugar tree and beech Northeastly corner to Thomas Bourges survey No. 5288, thence with his line S 13 E 300 poles crossing a branch at 75 poles and a swamp to two sugar trees and a beech in said line, thence East 548 poles crossing a branch at 66 one at 328 and one at 416 poles to three sugar trees and an ironwood in the line of Means said survey, thence with said line N. 7 E 406 poles crossing a large branch to the beginning.

Benjamin Ferguson
 Maria Chenoux
 John Tomlinson M.R.

Walter Dun D.S.
 May 27th 1815
 October 12th 1815



Surveyed for the Representatives of Richard Call
 dec^d 296 acres of land on part of a Military Warrant
 No. 5232 on the waters of Mead river. Beginning



at two beeches and an ironwood southwest-

erly corner to David Bradfords survey

No. 3136 in the line of the representatives

of James Calderwoods survey No. 3139

running with Bradfords line N. 58. E. 190 poles crossing several bran-

ches to two blue ashes and a hackberry in said line; thence S 25 E

204 poles crossing a branch at 92 poles to a hickory and two small

beeches, thence S. 65. W 363 poles to two beeches in the line of said

Calderwoods survey No. 3137; thence with his line N. 15 E 154

poles to an ash and sugar tree northeast corner to said survey and

corner to said Calderwoods survey No. 3139 thence with the line

of said survey N. 74 E 65 poles to two sugar trees corner to said

survey; thence with another of the lines of said survey N. 16 W 74 poles

to the beginning.

Richard Mamon 3

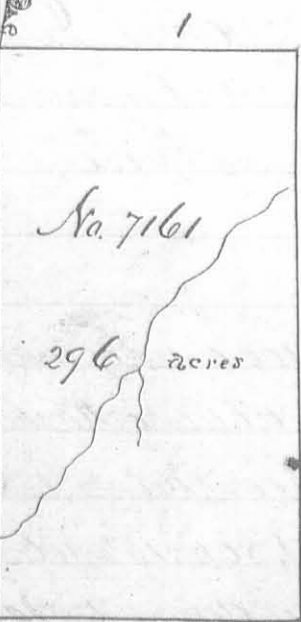
Benjamin Matthews 3 C.C.

William Stunsley M.R.

James Galloway Jr. D.S.

December 3^d 1811

January 2^d 1812



Surveyed for the Representatives of Richard Call
 296 acres of land on part of a military warrant

No. 5232 on the waters of Rush Creek. Beginning

at an ash and two hickories Northeast corner

to Taylor and Piercis survey No. 10060 in the

line of Alexander Parkers survey No. 9958

running with Taylor and Piercis line S. 12. E.

300 poles crossing a branch at 260 poles to a

stake in said line; thence N. 78. E 158

poles to a stake; thence N. 12. W. 300 poles

crossing a branch to a stake in the line of Robert Means

survey No. 9959, thence with Means line passing his south

west corner and with the line of said Parkers survey

S. 78. W. 158 poles to the beginning.

David Colvin 3

James Nancy 3 C.C.

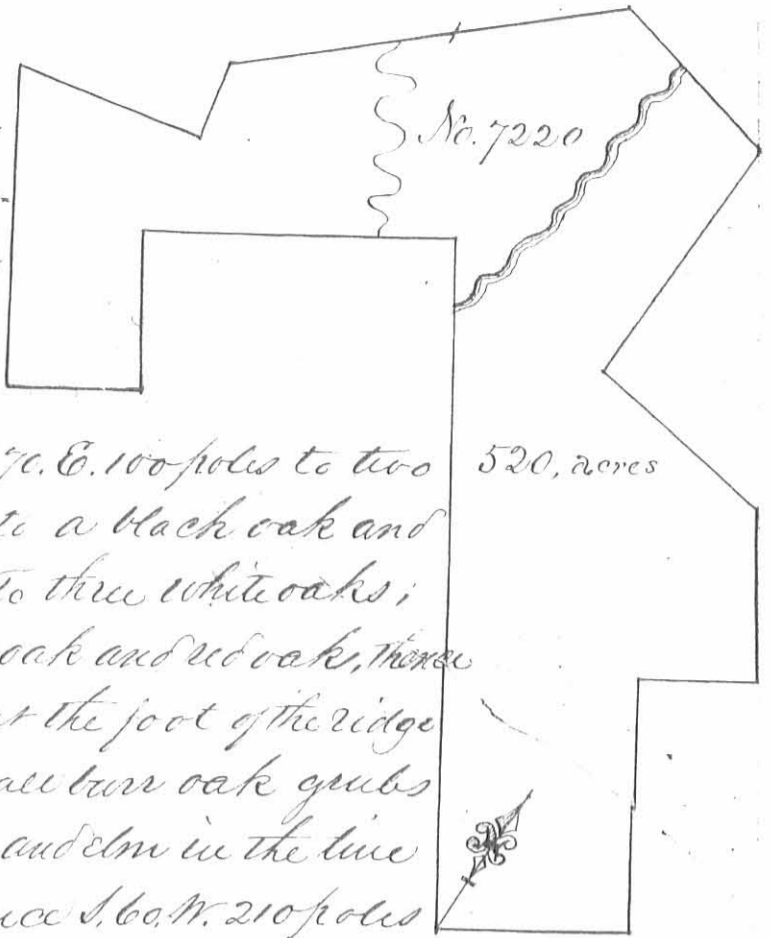
Noah Nevault M.R.

Thomas J. McArthur D.S.

April 21. 1822

June 18. 1822

Surveyed for James Denny a few
250 acres of land on part of a military
warrant No 5052 on Road River. Be-
ginning at a black oak and hickory
Northwest corner to Zadok Mackers
Denny No. 6516 in the line of Samuel



Finley's survey No. 4493 running N. 70. E. 100 poles to two
hickories; thence N. 20. W. 130 poles to a black oak and
white oak; thence N. 70. E. 60 poles to three white oaks;
thence N. 20. W. 90 poles to a white oak and red oak; thence
N. 71. W. 110 poles to two hickories at the foot of the ridge
thence N. 12. E. 140 poles to two small burr oak gnubs
thence N. 65. W. 100 poles to a hickory and elm in the line
of said Denny's survey No. 4957; thence S. 60. W. 210 poles
passing said Denny's corner to three white oaks in the line of Thomas No
Baileys survey No. 5864; thence with his line South 40 poles to three
black oaks southeast corner to said Bailey; thence with another of his
lines West 100 poles to a black oak; thence S. 20. E. 162 poles to a black
oak in the line of said Finley's survey; thence N. 70. E. 79 poles to a
white oak; thence N. 20. W. 90 poles to a hickory and black oak
thence N. 70. E. 166 poles to a post corner to said Finley's survey No.
4425; thence S. 20. E. 357 poles to the beginning.

Conrad Moore $\frac{3}{3}$
William A. McNeal $\frac{3}{3}$ C.C.
Israel Howell M.k.r.

James Denny D.S.
February 20th 1812
April 13. 1812



Surveyed for Green H. Hubbard a few 100 acres of land on part of
a military warrant No. 4818 in the waters of Rush Creek; begin-
ing at a beech and sugar tree southeast corner to Sayton Yancey's
survey No. 3320, running thence N. 80. E. 152 poles crossing the
lake pond 48 to 118 poles to two sugar trees southwest corner to James Keating's
survey No. 3323; thence with his line N. 10. W. 105 1/4 poles to a sugar tree
two buckeyes and a hackberry; thence S. 80. W. 152 poles crossing Rush
creek at 98 to a lynn large ash + 2 sugar trees in the line of said
Yancey's survey; thence with said line S. 10. E. 105 1/4 poles crossing a branch
at 28 poles to the beginning.

Milkiah Rosebrough $\frac{3}{3}$
Robert Rosebrough $\frac{3}{3}$ C.C.
P. A. White M.k.r.

James Taylor D.S.
Decem^r 15. 1823
Novem 13. 1824

Surveyed for Walter Dun 230 acres of land on a Military warrant No. 6081 and 130 acres on part of No. 6125 on the waters of Mead river: Beginning at a white oak and red oak westerly corner to said Dun's survey No. 6762, thence with his line and the line of James Denny's survey No. 4957, N 60 E. 192 poles to a sugar tree corner to Denny's said survey; thence with another of his lines N. 30 W. 16 poles to a black oak corner to Denny and southerly corner to John Gallows's survey No. 6449, thence with said line N 84 W. 114 poles to three white oaks southwesterly corner to Gallows; thence North 20 poles to two hickories southeast corner to Alexander S Dandridge's survey No. 4477; thence with Dandridge's line West 105 poles to a sugar tree and red oak in said line corner to Thomas Bayly's survey No. 5864, thence with Bayly's line south 355 poles crossing a branch at 120 and at 206 poles to three white oaks corner to said Denny's survey No. 7220, thence with his line N. 60 E. 125 poles crossing a branch at 98 poles to a stake in the line of Anthony Singleton's survey No. 4943; thence with said line N 24 E. 80 poles to a white oak, northerly corner to Singleton's survey; thence with another of his lines S. 80. E. 73 poles to a stake in said line and in the line of said Denny's survey No. 7220, thence with said line N. 60 E 14 poles to a stake on the side of a brushy ridge, southerly corner to said Denny's survey No. 4957; thence with his line N. 30 W. 76 poles to three white oaks in said line easterly corner to Dun's said survey; thence with Dun's line S. 60 W. 106 poles to a black oak and white oak southerly corner to Dun's said survey; thence with another line of the said survey N. 30. W. 84 poles to the beginning.

George McColloch 3
 William McColloch 366
 Solomon McColloch M.k.r.

Walter Dun D.C.
 July 31st 1815
 October 9th 1815



No. 9370
150, acres

Surveyed for Thomas Perkins ap^o 150 acres of land on a military warrant No 6214 and 50 acres on part of No 6215 on the waters of Mill creek and Mad river: Beginning at two poplars and a hickory westerly corner to the Representatives of Swelling Jones survey No 4655 and southerly corner to Ladd and Norvell's survey No 9198 running with their line N. 38. W. 30 poles to two beeches and an ash westerly corner to their survey; thence S. 52. W. 190 poles to a beech and ash on the side of a hill, thence S. 38. E. 130 poles to a black walnut buck and hickory; thence N. 52. E. 190 poles to the beginning.

Edmond Keaman
David Keaman
William Sturtevant M.k.r.

James Galloway Jun^r D.S.
November 7th 1817
May 22nd 1818

Surveyed for Silletary Albridge 150 acres of land on a military warrant No. 6027 and 50 acres part of No. 6216 on the waters of Mill creek and Mad river, beginning at a sugar tree, dogwood, beech and hickory northerly corner to Ladd and Norvell's survey No. 9198 in the line of John M^cDonald's survey No. 5088 running with Mc Donald's line N. 38 W. 194 poles crossing a branch of Mill creek at 40 poles to three beeches and a sugar tree easterly corner to James Galloways survey No. 7140; thence with his line S. 52 W 124 poles crossing a branch of Mad river at 64 poles to a lynn, dogwood & hickory, ironwood and sugar tree in said Galloways line; thence S. 38. E. 194 poles to two beeches and an ash westerly corner to said Ladd and Norvell's survey; thence with their line N. 52 E. 124 poles to the beginning.

No. 9372
150, acres

Edmond Keaman
David Keaman
Wm. Sturtevant M.k.r.

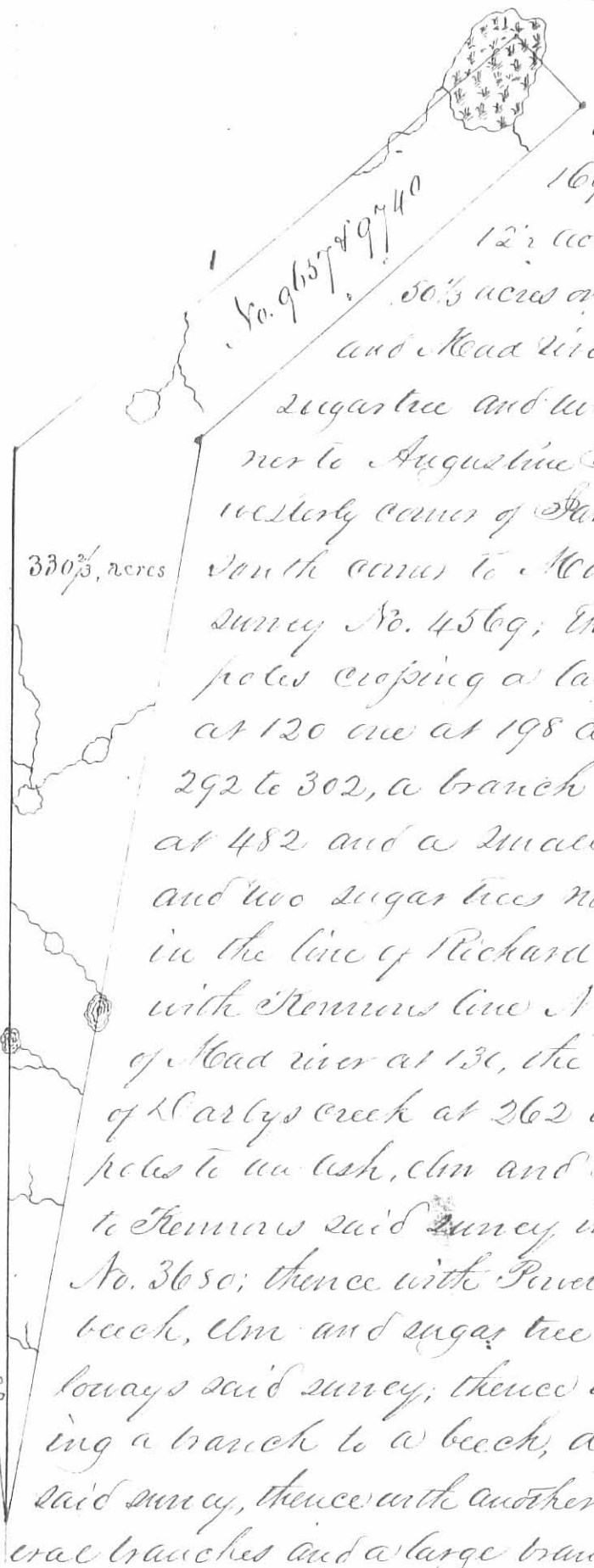
James Galloway Jun^r D.S.
November 7th 1817
May 22nd 1818

No. 9572
65, acres

Surveyed for Cadwallader Wallace 65 acres of land on part of a military warrant No. 6217 on the waters of Big Miami: beginning at two black oaks Northeast corner to Pryor Pruitt's survey No. 5045 in the west line of Hezekiah Meaton's survey No. 4498; thence with said line North 90 poles to a white oak and dogwood Northwest corner to Meaton's said survey, in the line of Alexander Standridge's survey No 4478; thence with his line west 132 poles passing his southwest corner at 80 poles to two black oaks in Sidons line, thence with said line S. 20 E. 97 poles to two black oaks southerly corner to Pruitt's said survey thence with his line East 100 poles to the beginning.

Amos Foster
John Waddington
Silvanus Brown M.k.r.

Cadwallader Wallace D.S.
June 13th 1818
June 19th 1818



Surveyed for Master Samm Capt^e 330²/₃ acres of land on part of the Military Warrant 169²/₃ acres on No. 5638, 30 acres on No. 5631 12²/₃ acres on No. 5621, 68²/₃ acres on No. 5877 and 50²/₃ acres on No. 5825 on the waters of Carlys creek and Head river: beginning at two blue ashes a sugar tree and two dead mulberries southeasterly corner to Augustine Smiths survey No. 3230 most westerly corner of James Gallaways survey No. 7117 and south corner to Maria Bella Scott and Bernard Scott survey No. 4569, thence with Scotts line N. 50° 50' E 654 poles crossing a large branch at 46 a small branch at 120 one at 198 a drain at 286 crossed a pond from 292 to 302, a branch at 386, one at 454 the Urbana road at 482 and a small branch at 536 poles to a red oak and two sugar trees northerly corner to Scotts said survey in the line of Richard Kemmurs survey No. 4570, thence with Kemmurs line N 56° E 400 poles crossing a branch of Head river at 136, the Urbana road at 232 and a branch of Carlys creek at 262 at 299, at 306, at 328 and at 343 poles to an ash, elm and maple in a swamp easterly corner to Kemmurs said survey in the line of Robert Powers survey No. 3650; thence with Powers line S. 38° E. 57 poles to a white oak beech, elm and sugar tree in said line northerly corner to Gallaways said survey; thence with his line S. 53° W 310 poles crossing a branch to a beech, dogwood and elm corner to Gallaways said survey, thence with another of his lines S. 15° W. 671 poles crossing several branches and a large branch to the beginning.

Joshua Cain
Asa Robinson
William Sharp M.k.a

Walter Dun, D.S.
December 1st 1818
May 4th 1819

Surveyed for Joseph and Benjamin W Sudd and Thomas Nowell Capt^e 9 acres of land on part of a Military Warrant No. 5880 on the waters of Head river; beginning at a beech, sugar tree and cherry tree northeast corner to Samuel Davis survey No. 3216 running with his line S. 15° W. 182 poles to a beech and sugar tree in said line and beginning corner to Thomas Thwaites survey No. 4661, thence with said Thwaites line N. 19° E. 203 poles to two beeches and a sugar tree northwesterly corner to his survey, thence S. 70° W. 26 poles to the beginning.

Caleb Reems
Dania Morrison
Jeremiah Reems M.k.a

James Gallaway Junr D.S.
September 6th 1819
October 20th 1819

No. 9891

999 $\frac{1}{2}$ acres

Surveyed for William Roberts of
John Robertson and Thomas Cranton
999 $\frac{1}{2}$ acres of land on the following
Military Warrants; Roberts 350 acres
on No 2027 and 2030; Robertson 575 $\frac{1}{2}$
acres on part of No. 2158 and Crav-
en 78 $\frac{1}{2}$ acres on part of 44 on the
waters of Boker creek; beginning
at two beches and a small Cherry
tree in the Greenville Treaty line
southeast ~~south~~ corner to Lake
Cannon and other survey No. 9890
thence with the Greenville treaty

line S. 78 $\frac{1}{2}$ E 400 poles to an ash horn beam and two beches; thence N
12 N. 400 poles to an ash, cherry tree and box elder on the bank of a
branch; thence S. 78 $\frac{1}{2}$ N. 400 poles crossing said branch at 140 and at 214
poles to three beches northeast corner to Cannon and other survey; thence
S. 12, E 400 poles to the beginning.

Lewis D Sharp
Melkiah Rosbrag 3/66
Wilson & Thompson M.k.r.

Saml Ferrer D.S.
January 3^d 1820
July 21. 1820

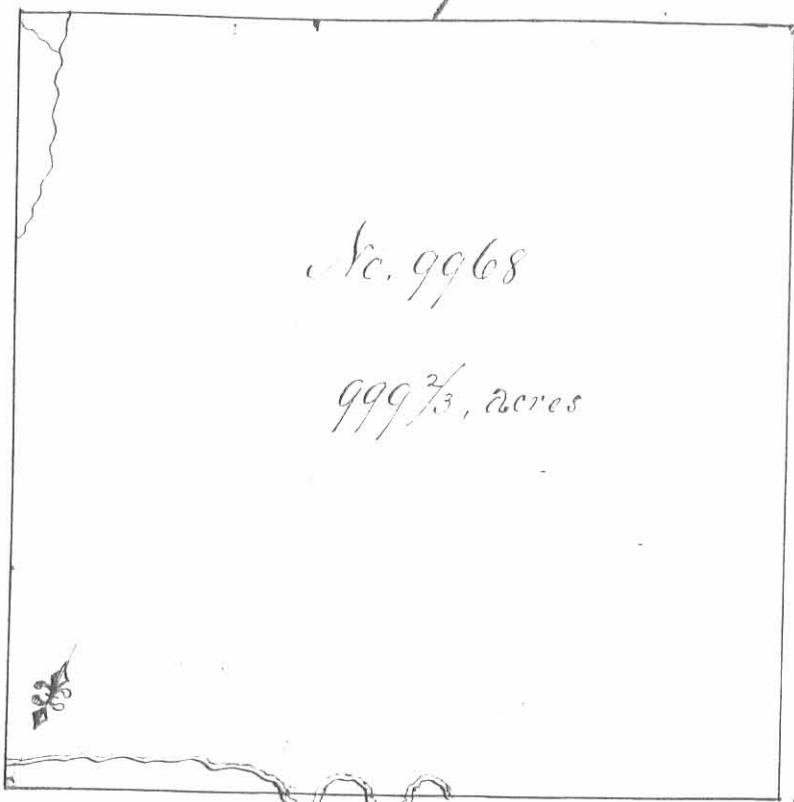
Surveyed for the Representatives of
Robert Young dec^d 1000 acres of land
on part of a Military Warrant No 5267
on the waters of the Big Miami: Begin-
ning at three beches southeast corner
to the Representatives of Francis Taylor
and other survey No. 9969 and north
east corner to George Clark survey No
9967, thence N 78 E 400 poles crossing
the main branch of big miami at
98 and a branch at 282 poles to two
hickories northeast corner to Michael
Bayers survey No. 9949, thence N 12 N. 400 poles crossing the main creek at 42
poles to two beches; thence S. 78. N. 400 poles to a hickory, lynn and sugar tree north
east corner to Taylor and other entry No. 9969, thence with a line of said entry
S 12 E 400 poles to the beginning.

Lewis D Sharp
Melkiah Rosbrag 3/66
Wilson & Thompson M.k.r.

No. 9970

1000 acres

Saml Ferrer D.S.
March 2^d 1820
July 22. 1820



Surveyed for Churchill Jones and James Taylor ^{ap^{re}} and John Steel 999 ²/₃ acres of land on two Military Warrants, Jones and Taylor 611 acres on No 5731 and Steel 388 ²/₃ acres on No 5443 on the big Miami: - Beginning at an ironwood and two beeches Northwest corner to George Clarke's survey No. 9947 thence S 78 E 400 poles crossing the big Miami at 144 poles and several times leaving at 210 poles to two sugar trees and two buck-

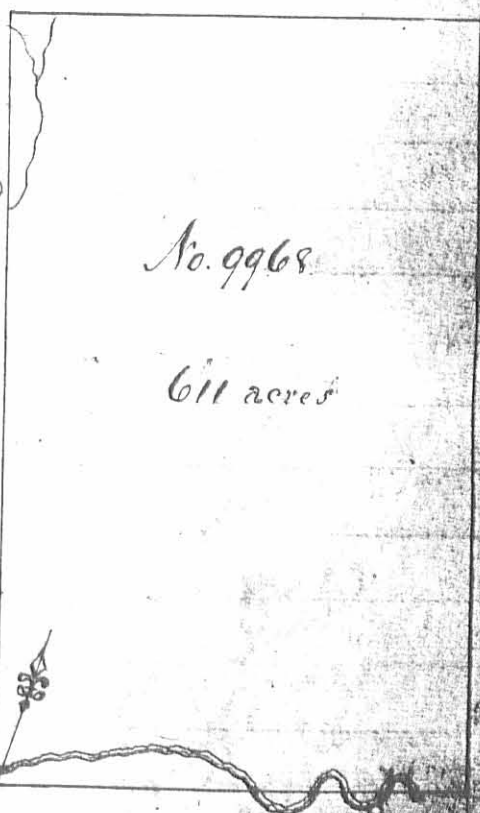
eyes northeast corner to Clarke's said survey; thence N. 12 N. 400 poles to two beeches, thence S 78 N. 400 poles to a stake 25 poles west of the North branch of Miami; thence S. 12 E 400 poles to the beginning.

Levi D. Thorpe
 Keniah Rosebrau
 Wilson S. Thompson M.k.s.

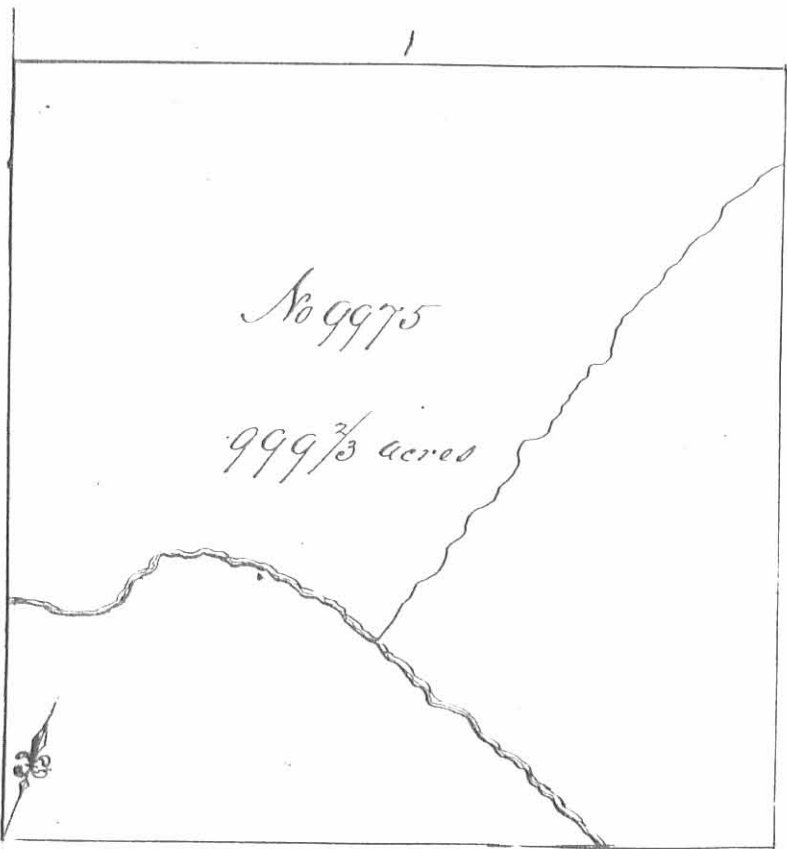
Sam^l Forster D.S.
 February 29. 1820
 July 22nd 1820

Surveyed for James Taylor ^{ap^{re}} 611 acres of land on part of a military warrant No 5431 on the Big Miami: Beginning at an Ironwood and two beeches Northwest corner of George Clarke's survey No 9947; thence N 78 E 250 poles (at) the big Miami at 114 poles and several times and leaving it at 210 poles to a stake in Clarke's line; thence N. 12, N. 400 poles to a stake, thence S. 78. N. 250 poles to a stake 25 poles west of the North Branch of Miami, thence S. 12, E. 400 poles to the beginning.

And S Dawson
 Jesse Coffee
 G. Henderson M.k.s.



James Taylor D.S.
 July 4th 1839
 July 12th 1839



Surveyed for the Representatives of William Miller and the representatives of John Green and Thomas Martin and James Taylor of 999 ²/₃ acres of land on the following Military Warrants; - Miller 388 ²/₃ acres on No 5439 Green 111 acres on No 5089 Martin and Taylor 353 acres on part of No. 5247 and James Taylor 145 acres on No 5363 and 50 acres on No. 5408 on the waters of Big Miami beginning at a Sugar tree and

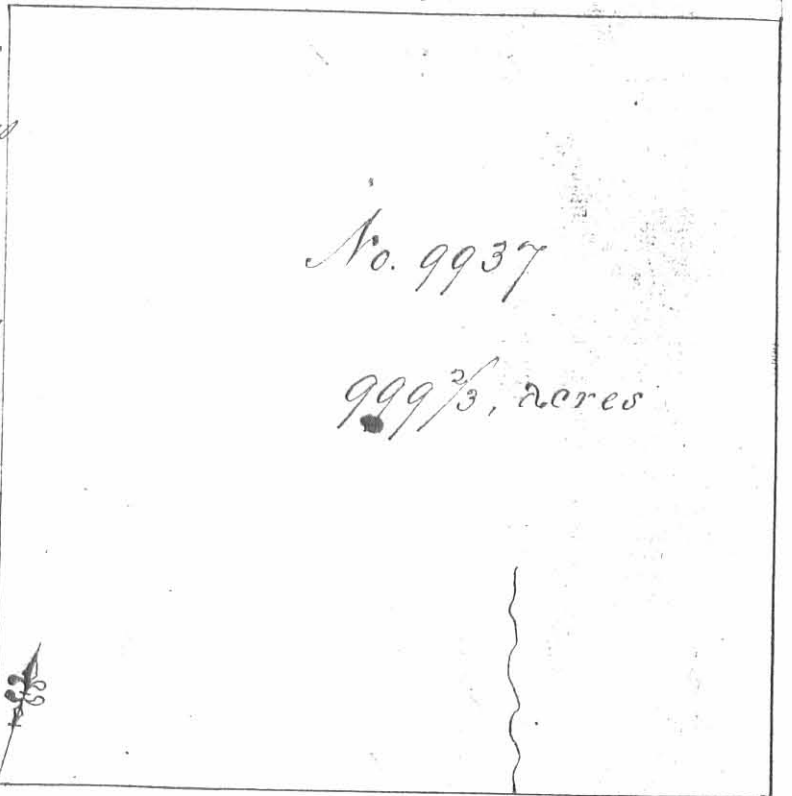
three beeches southeast corner of Duncan McArthur's survey No. 9974 thence N. 78. E 400 poles crossing a drain at 14 and the main branch of Miami at 308 poles to three beeches northeast corner to James and William Taylor's survey No 9954, thence N 12 W. 400 poles crossing a branch at 34 poles to three beeches, thence N 78 W 400 poles to an elm, maple and ash northeast corner of McArthur's said survey; thence S 12 E 400 poles crossing the main branch at 266 poles to the beginning.

Levi D Thorp
 Belkiah Rosbrag
 Wilson S Thompson M.k.v

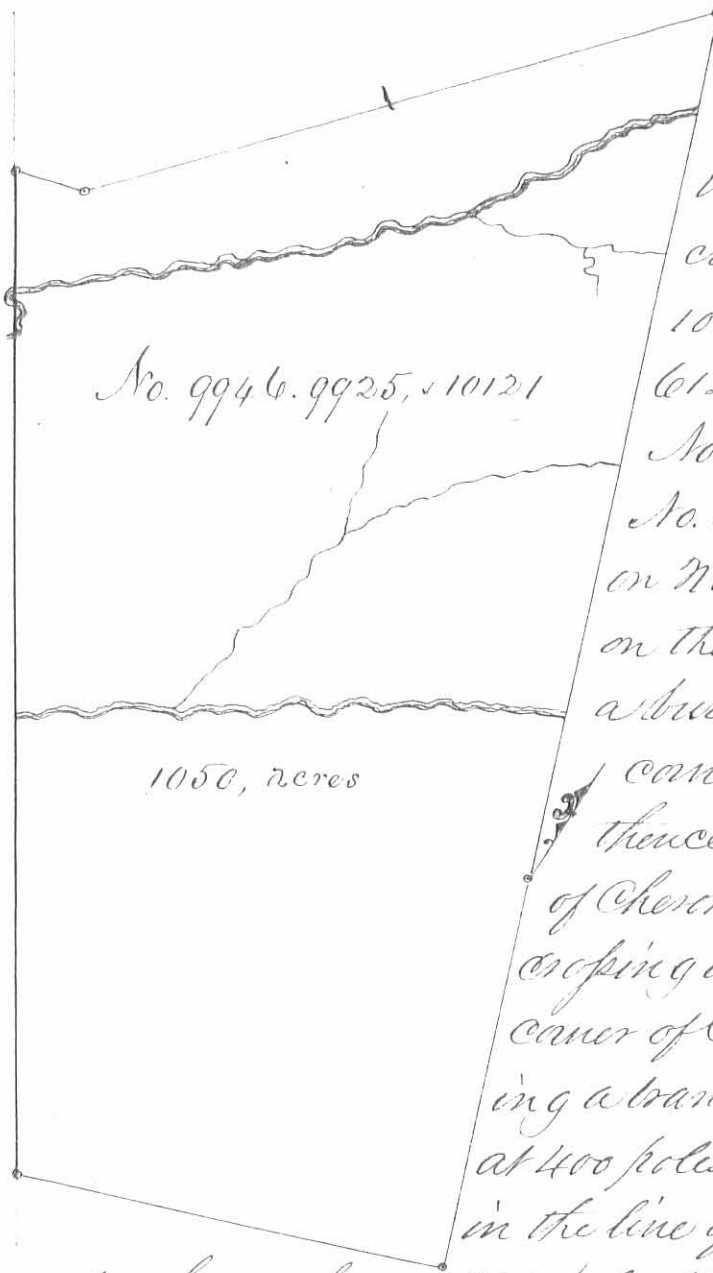
Sam^l Forrer D.S.
 March 2nd 1820
 July 22nd 1820

Surveyed for Elizabeth Monon devereux and James Taylor of 999 ²/₃ acres of land on two Military Warrants Monon 555 acres on No 5460 and Taylor 444 ²/₃ acres on No. 5456 on the waters of Scioto; beginning at three beeches southeast corner to James Benwick's survey No. 9936, thence with a line of Nicholas Taliaferro's survey No 9912 N 78 E 400 poles crossing a branch of Boker's creek at 269 poles to a buckeye, bur oak and hickory northeast corner to Taliaferro's said survey, thence N 12 W. 400 poles to a buckeye and two iron woods, thence S 78 W. 400 poles to two ashes and an elm northeast corner to said Benwick's survey, thence with said line S 12 E 400 poles to the beginning.

Levi D Thorp
 Belkiah Rosbrag
 Wilson S Thompson M.k.v



Sam^l Forrer D.S.
 January 21st 1820
 July 22nd 1820

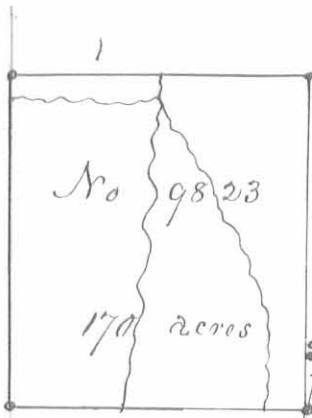


Surveyed for Walter Dun of 1050 acres of land in part of ~~the~~ Military warrants, 210 acres on No 6202, 100 acres on No. 5877, 46 2/3 acres on No 6217, 100 acres on No 5718, 100 acres on No 6120, 15 acres on No. 6124, 27 acres on No. 5825, 200 acres on No 6216, 210 acres No. 5828, 73 1/3 acres on No 5849, 37 acres on No 6222 and 21 acres on No. 6218 on the Big Miami river; beginning at a bur oak red oak and beech southwest corner to George Clark's entry No. 9947 thence N. 12 W. 400 poles touching a bend of Cherokee mans run at 68 and at 76 poles crossing it at 84 poles passing the north west corner of Clark's said entry at 400 poles, crossing a branch at 220 at 334 and the big Miami at 400 poles to a beech, two ashes & a hickory in the line of Churchill Jones and others entry No

9968, thence S. 50 W. 344 poles to two ashes, thence S. 78 W. 37 poles to an ash maple and Elm in Robert's line also the line of the Shawnee and Seneca reserve at Swistain, thence with the said line S 24 30' E 520 poles crossing the big Miami at 60 and down it from 60 to 80 poles crossing Cherokee mans run 280 poles passing the division between the Senecas and Shawnees at 420 poles to two hickories and a large white oak in the said line, thence N. 78 E. 227 poles to a hickory red oak and Cherry tree; thence N. 12 W. 208 poles to the beginning

George Henry 3
James Henry 3 AC
Benjamin McCullough M.R.

Walter Dun D.S.
November 20th 1819
March 29th 1820



Surveyed for Thomas Pemberton 170 acres of land on part of a military warrant No 2742 on the lake of Rush creek; beginning at two sugar trees and an Ironwood Southwesterly corner to James Mcabins survey No. 3323 in the line of William Millers survey No 3327, thence with Mcabins line N. 10 W. 173 poles to a stake in said line; thence S. 80. W 158 poles crossing rush creek at 83 poles to a cypress, sugar tree and Ironwood in the line of Sayton Yanceys survey No. 3320; thence with said line S 10 E. 173 poles crossing a branch at 12 poles to a sugar tree and beech southeasterly corner to Yanceys said survey in the line of Millers said survey; thence with said line N 80 E. 158 poles crossing the lake from 60 to 130 poles to the beginning.

Thomas Southland 3
Ebenezer O Kendrick 3 C.C.

Matthias Bonner M.k.r.

Walter Dun D.S.

January 15th 1820

March 14th 1820

Surveyed for Joseph and Benjamin W Ladd and Thomas Novell a part 100 acres of land on part of a military warrant No 5633 on the waters of Keitt creek and Mad river; beginning at two poplars and a hickory westerly corner to the representatives of Swelling Jones survey No 4655 running N 38 W. 130 poles crossing a small branch at 94 poles to two beeches and an ash, thence N. 52 E. 124 poles to a sugar tree, dogwood, beech and hickory in the line of John M Donalds survey No. 5088, thence with his line S. 38. E. 130 poles to a sugar tree corner to his survey in said Jones line; thence with said line S 52 W. 124 poles to the beginning.

Edmund Mearman 3
David Mearman 3 C.C.

William Tinsley M.k.r.

James Gallaway Sur D.S.

November 7th 1817

May 22nd 1818

Surveyed for Walter Dun a part 70 acres of land on part of a military warrant No 6218 on the waters of Mad river; beginning at a black oak in Sudlers line, westerly corner to Samuel Finleys survey No. 4493 & 4525; thence with Sudlers line N. 20 W. 188 poles passing a spring at 54 poles to two hickories in said line Southwesterly corner to Thomas McBoylers survey No. 5864, thence with Boylers line East 72 poles to a black oak in said line; thence S 20 E 162 poles to a stake in the line of Finleys said survey; thence with said line S. 70. W. 67 poles to the beginning.

Joseph Overstow 3

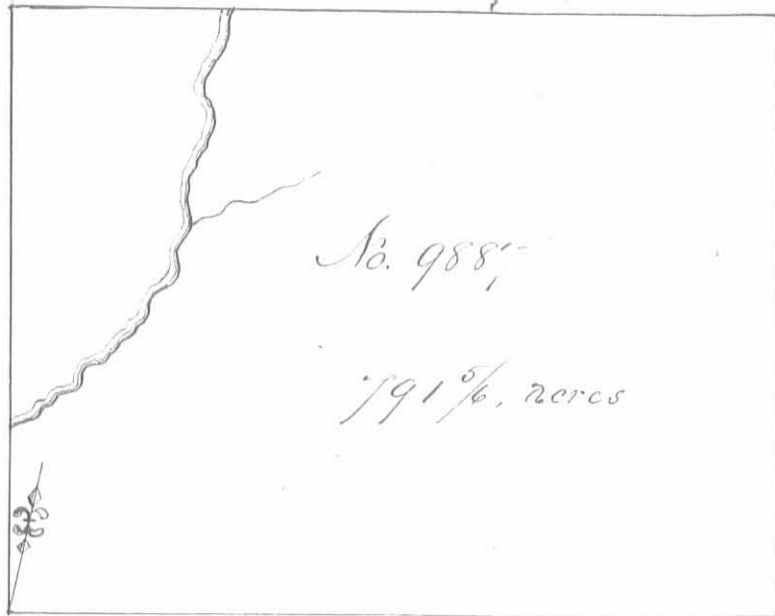
James Craig 3 C.C.

Asaon Hunt M.k.r.

Walter Dun D.S.

January 14th 1819

March 4th 1819



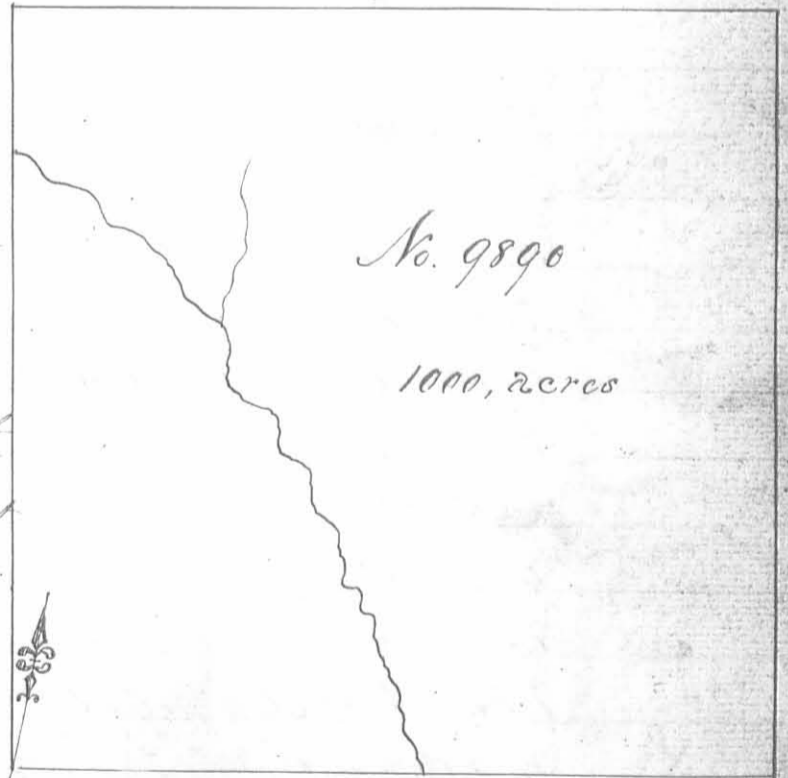
Surveyed for John Jameson, Lewis
Booker, Abraham Kite and James
Taylor Aprth 791 $\frac{1}{2}$ acres of land
on a Military warrant and
part of two, Jameson 208 $\frac{1}{2}$ acres on
part of No 5437, Booker 555 acres
on No 5423 and Kite and Taylor
28 $\frac{1}{2}$ acres on part of No 5548 on Rush
Creek: Beginning at an ash and
elm north west corner to John
Jamesons survey No 9887, thence

with his line N. 78. W. 400 poles crossing the Sandusky road at
336 poles to three beeches and two hornbeams northeast corner
to said Jamesons survey; thence N 12. W. 317 poles to a beech and
two sugar trees; thence S. 78. W. 400 poles crossing a rush Creek at
285 poles to a blue ash and beech northeast corner to Bradford
and others survey No. 9886, thence S. 12. E. 317 poles crossing the
creek at 221 poles to the beginning.

Levi D Sharp
Kalkiah Rosebrog 3 C. 6
Wilson L Thompson M. L. S.

Samuel Forrer D. S.
January 3rd 1820
May 8th 1821

* Surveyed for Luke Cannon and
James Taylor, James Williams,
Charles Pelham and James Taylor
1000 acres of land on two Military
warrants; Cannon and Taylor 148
acres on No 5444 Williams 388 $\frac{1}{2}$ acres
on No 6161 and Pelham and Taylor
463 $\frac{1}{2}$ acres on part of No. 5646 on the
waters of Pokes Creek: Beginning at
two sugar trees southeast corner to
Lewis and others entry No 9889 in
the Greenville treaty line; thence
with said line N. 78 E 400 poles
to a small cherry tree and two beeches; thence N. 12: E 400 poles to three
beeches; thence S 78 W 400 poles to a sugar tree and two beeches northeast
corner to entry No 9889, thence S, 12, E. 400 poles crossing a branch at 80
poles to the beginning.



Levi D Sharp
Kalkiah Rosebrog 3 C. 6.
Wilson L Thompson M. L. S.

Samuel Forrer D. S.
January 10th 1820
March 7th 1821

No. 9887. 208 1/2 acres

Surveyed for John Jameson 208 1/2 acres of land on part of a Military Warrant No. 5437 on the waters of

Rush Creek; beginning beginning at two swamp ashes southeast corner to Bradford and others survey No 9886, thence with the Grenville treaty line N 78 E 400 poles to an elm, blue ash and sugar tree; thence N 12 W 83 1/4 poles to two horn beams and three beeches; thence S. 78. W 400 poles to an ash maple and elm in the line of Bradford and others said survey, thence with said line S. 12 E. 83 1/4 poles to the beginning.

Levi D. Thurst
 Hilkiak Rosebrog 3 C.C.
 Wilson S. Thompson M.S.R.

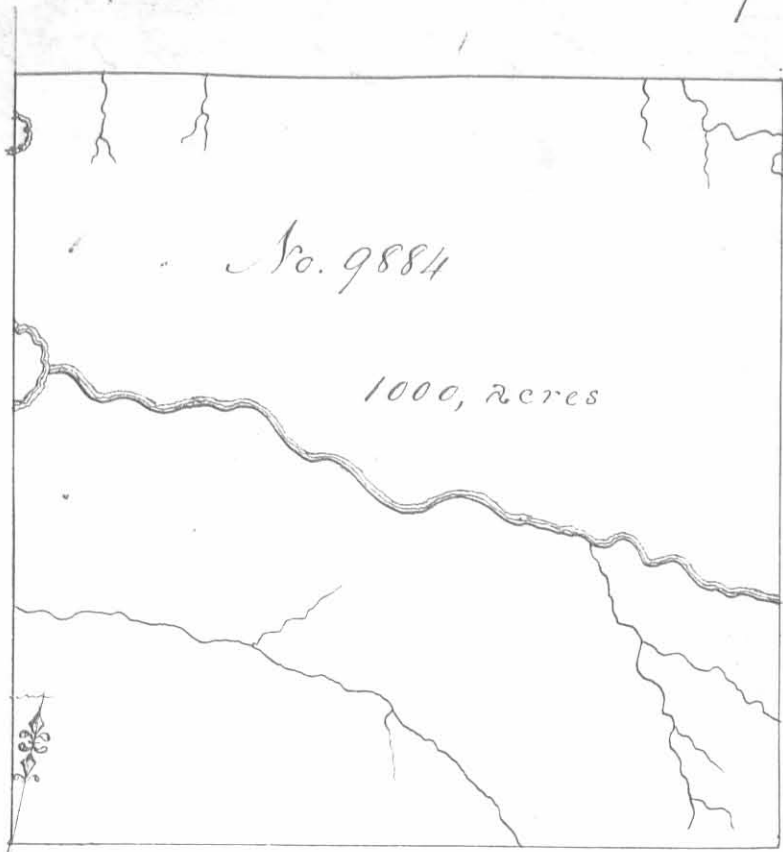
Samuel Forrer D.S.
 January 3^o 1820
 March 8^o 1821

Surveyed for Walter Dun apte and John Carrion 1000 acres of land on part of six Military warrants, Dun 500 acres, 222 acres on No 4937, 46 acres on No. 6098, 100 acres on No. 5999 100 acres on No. 6000, 32 acres on No 5998 and Carrion 500 acres on No 3221 on the waters of Scioto; beginning at a Walnut and two small lymus south east corner to William Paritts and others entry No 10039, thence with Paritts line N. 78. E 400 poles crossing a branch at 11, Houlls road at 53 a branch at 86 one at 250 and a drain at 369 poles to three small Buckeyes and an elm northeast corner to said survey and beginning corner to Dun and Keiths survey No 2820's acres; thence with their line N 12 W. 400 poles crossing several drains to two beeches Northwest corner thereof; thence S. 78 W. 400 poles crossing Houlls road at 100, a large branch at 115 to 122 poles, a new road at 240 and a drain at 294 and a branch at 365 poles to two lymus, two, sugar trees and an ash northeast corner to Walkie's said survey; thence with his line S. 12. E. 400 poles crossing a branch at 20, one at 184, a drain at 294, a branch at 315 at 326 and a drain at 393 poles to the beginning.



David C. Wingitt 3
 Calvin Wingitt 3 C.C.
 Simon Hoager M.S.R.

Thomas J. McArthur D.S.
 January 15th 1821
 March 27th 1821



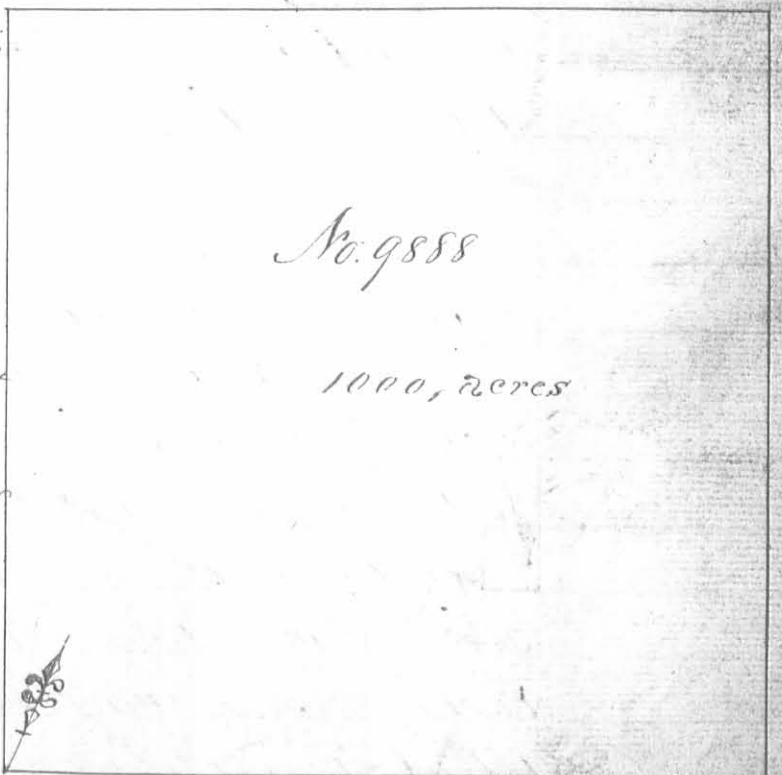
Surveyed for Joseph White 1000 acres of land on part of a Military Warrant No. 5805 on Cherokee mans run: Beginning at four Sugar trees southeast corner to Mark Hardins survey No 9883 in the Greenville Treaty line; thence with Hardins line N. 12. W. 400 poles crossing a drain at 80 at 82 a large branch at 121, Cherokee mans run at 238, a branch at 272 one at 360 and one at 374 poles to a white oak and an ash stump northeast

corner to said survey; thence N. 77. 20' E 400 poles crossing a branch at 44 one at 100 one at 330 and one at 354 poles to a large red oak a large white oak and beech; thence S. 12. E. 400 poles crossing a drain at 28 at 36, Cherokee mans run at 314 a branch at 320 one at 328 and one at 372 poles to a beech, ironwood, blue ash and elm sapling in the Greenville Treaty line; thence with said line S 77° 20' W 400 poles crossing a branch to the beginning.

George W Colloch ³/₃ C.C.
George Henry ³/₃ C.C.
Simon Hager m.k.r.

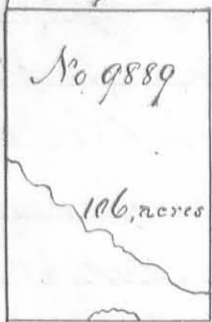
Thomas A. McArthur D.S.
January 10th 1821
March 28th 1821

Surveyed for the Representatives of Charles Porterfield 1000 acres of land on part of a Military warrant No 5455 on the waters of Mill Creek: Beginning at an elm blue ash and sugar tree in the Greenville Treaty line southeast corner of John Jamison and others survey No 9887 thence with said treaty line N. 78. E 400 poles to two beeches, thence N. 12 W. 400 poles crossing a branch at 190 and one at 318 poles to a sugar tree; thence S 78 W. 400 poles to two sugar trees and a beech northeast corner to said Jamison and others survey, thence with their line S 12 E. 400 poles to the beginning.



Sevi D Sharp ³/₃ C.C.
Kilkiak Rosebrag ³/₃ C.C.
Wilson S Thompson m.k.r.

Sam^l Forrer D.S.
June 3rd 1820

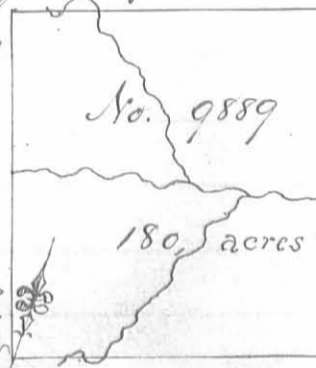


Surveyed for Robert Means and George Clark ap^{pr} 106 acres of land on part of two Military Warrants, Means 34 acres on No 4785 and Clark 72 acres on No 5513 on the waters of Meia creek; beginning at two sugar trees N. 12. W. 400 poles from the southeast corner of Charles Porterfields survey No 9888. Thence N. 78 E. 105 poles to a lynn and beech; Thence S. 12 E. 102 poles to a lynn and beech; Thence S. 12 E 102 poles to a beech; Thence S 78 W. 105 poles crossing a large branch at 45 and at 60 poles to a stake; Thence N. 12. W. 102 poles crossing a large branch at 82 poles to the beginning.

Samuel Zane 3
Joseph Collins 3 C.C.
William Dapfing M.k.r.

Thos S. McArthur D.S.
May 7th 1822
August 7th 1822

Surveyed for James Taylor & Francis Meier ap^{pr} 180 acres of land on part of two Military Warrants, Taylor 100 acres on No. 5447 & Meier 80 acres on No 1474 on the waters of Meia Creek; beginning at two beeches southeast corner to the representatives of Charles Porterfields survey No 9888. in the Greenville Treaty line, thence with said line N. 78. E. 160 poles crossing a branch several times to two beech and a sugar tree; Thence N. 12. W. 180 poles crossing a branch at 80 poles to two sugar trees & beech; Thence S 78 W. 160 poles crossing a branch a number of times to a beech & sugar tree in said Porterfields line; Thence with said line S. 12. E 180 poles crossing a branch to the beginning.



Kilkiak Rosebragh 3
Robert Rosebragh 3 C.C.
P. N. White M.k.r.

James Taylor D.S.
December 16. 1823
November 15. 1824

Surveyed for Allen Latham ap^{pr} 26 acres of land on part of a military warrant No 1476 on the waters of the Scioto river; beginning at two beeches North east corner of Smith Sneads survey No 10013; Thence N. 12. W. 136 poles crossing lick run at 92 poles to two beeches; Thence S. 78. W. 23 poles to two sugar trees on the south bank of a branch northeast corner to Myatts survey No. 10013, Thence with his line S 12 E 136 poles to a beech and two sugar trees southeast corner to Myatts said survey; Thence N. 78. E. 23 poles to the beginning.

Levi D. Sharp 3
Kilkiak Rosebragh 3 C.C.
Wilson L. Thompson M.k.r.

Samuel Ferrer D.S.
January 4th 1821
January 30th 1821

No. 10581
20, 24

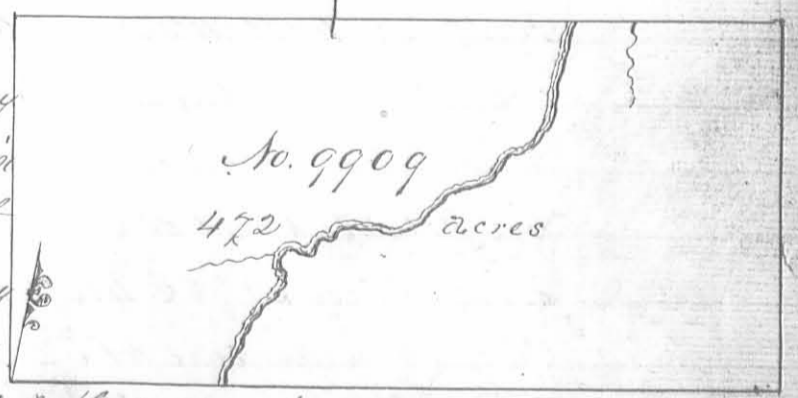


Surveyed for Mark Hardin of
 1000 acres of land on part of a mili-
 tary warrant No 3526 on Cherokee
 mans run; beginning at two red
 oaks and a large white oak South
 east corner to Abraham Williams
 survey No 10306 in the Greenville
 treaty line, thence with said line
 N 78 E. 116 poles crossing a drain
 from 76 to 86 poles to two hickories
 an elm and large white oak thence
 with said line N 77° 20' E. 384
 poles crossing a drain at 154
 and one at 210 poles to four sugar trees southwest corner to Joseph
 Hites survey No. 9884, thence with his line N. 12 N. 400 poles cross-
 ing a drain at 80 one at 82, a large branch at 124 Cherokee
 mans run at 238 a small branch at 272 a drain at 284
 and a small branch from 360 to 374 poles to a white oak and
 ash stump; thence S. 77° 20' N. 400 poles crossing a branch at
 20 one at 80 one at 134 and one at 322 poles to five beeches
 northeast corner to McArthur and Hites survey No 10307; thence
 with their line and the line of Williams said survey S. 12. N. 400
 poles crossing a small branch at 168; Cherokee mans run at
 196 and a drain at 336 poles to the beginning.

George Henry 3
 James Henry 3 C.O.
 Simon Hager M.k.r.

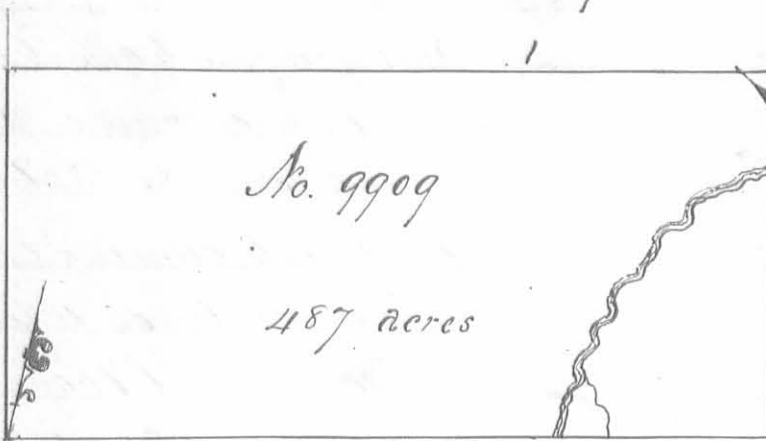
Thomas S. McArthur D.S.
 January 9th 1821
 March 28th 1821

Surveyed for Nathaniel Pondlet on
 472 acres of land on part of a military
 warrant No. 5491 on rush Creek: begin-
 ning at a blue ash and beech south
 east corner to Chiswell Barnette survey
 No. 9908 and north west corner to Hite
 and others survey No 9887, thence with their line N 78 E. 400 poles crossing
 rush creek at 115 poles to a beech and two sugar trees northeast corner
 to said survey; thence N. 12 N. 189 poles to a sugar tree and two beeches
 thence S 75 N. 400 poles crossing at 76 and the creek at 110 poles to two
 white oaks and a hickory a short distance west of a maple stump; thence
 S. 12. E. 189 poles to the beginning.



Levi D. Sharp 3
 Hilckiah Ronbrag 3 C.O.
 Wilson L. Thompson M.k.r.

Samuel Foster D.S.
 January 14th 1820
 March 13th 1821



Surveyed for Nathaniel Pendleton
and James Taylor by Matthew
Gregg and the Representatives of
Whitehead Coleman 487 acres of land
on part of three military warrants:
Pendleton and Taylor 472 acres on
No 5491, Gregg 8 acres on No 4959

and Coleman 7 acres on No. 4922 on Rush Creek; beginning at two white
oaks and a hickory Northwest corner to said Pendleton survey No 9909
in a line of Cherokee Barritt's survey No 9908, thence with Pendleton
line N 78 E. 400 poles crossing Rush Creek at 290 and a branch at 324
poles to a sugar tree and two beeches northeast corner to said Pendleton
survey; thence N. 12. W. 194 poles crossing the creek at 134 poles to a buck-
eye and small sugar tree; thence S. 78 W. 400 poles crossing a branch
at 240 and one at 312 poles to a red oak elm and sugar tree north
east corner to said Barritt's survey; thence with his line S. 12. E. 194 poles
to the beginning.

Levi D. Sharp

Hilkiak Rosstrag & Co.

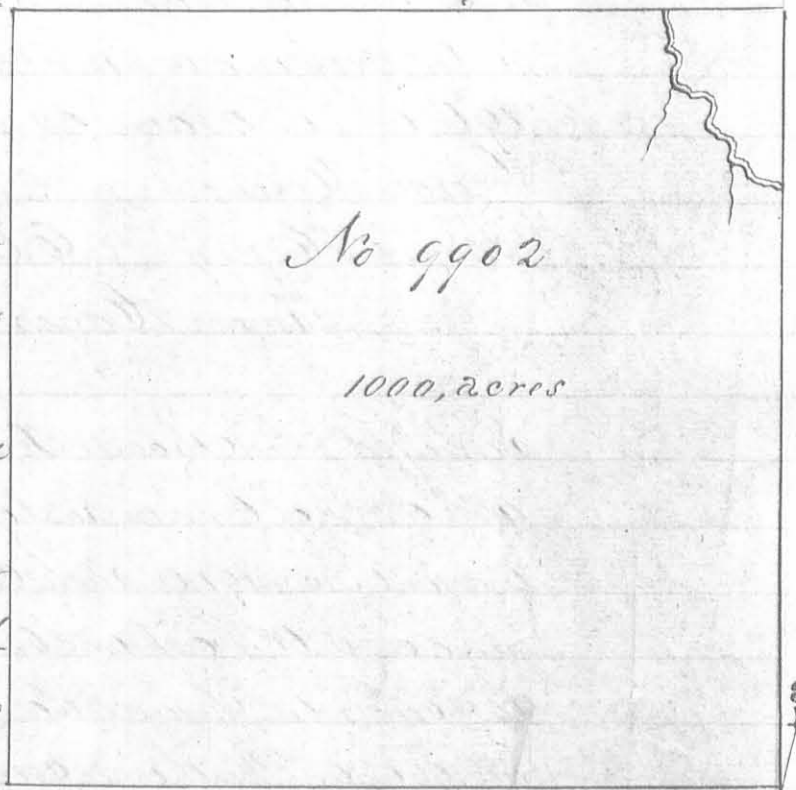
Wilson S. Thompson M.R.

Samuel Ferrer D.S.

January 11th 1820

March 13th 1821

Surveyed for the Representatives of Mi-
chael Rudolph 1000 acres of land on
part of a military warrant No 6310
on Cherokee mans run; beginning at a
black oak and small elm northwest
corner to Hubbard Myatt's survey No. 9881
and Northeast corner to Dun and Bayles
survey No 10122, 10248 and 10249, thence
with the line of their survey S. 78 W. 400
poles to two hickories; thence N. 12. W.
400 poles to two ashes and two hick-
ories; thence N 78 E 400 poles crossing
Cherokee mans run at 342 poles to a
black oak, red oak, hickory and elm northeast corner to William St. Reid
and others entry No. 9903; thence with his line S. 12. E. 400 poles, crossing
Cherokee mans run to the beginning.



George Henry

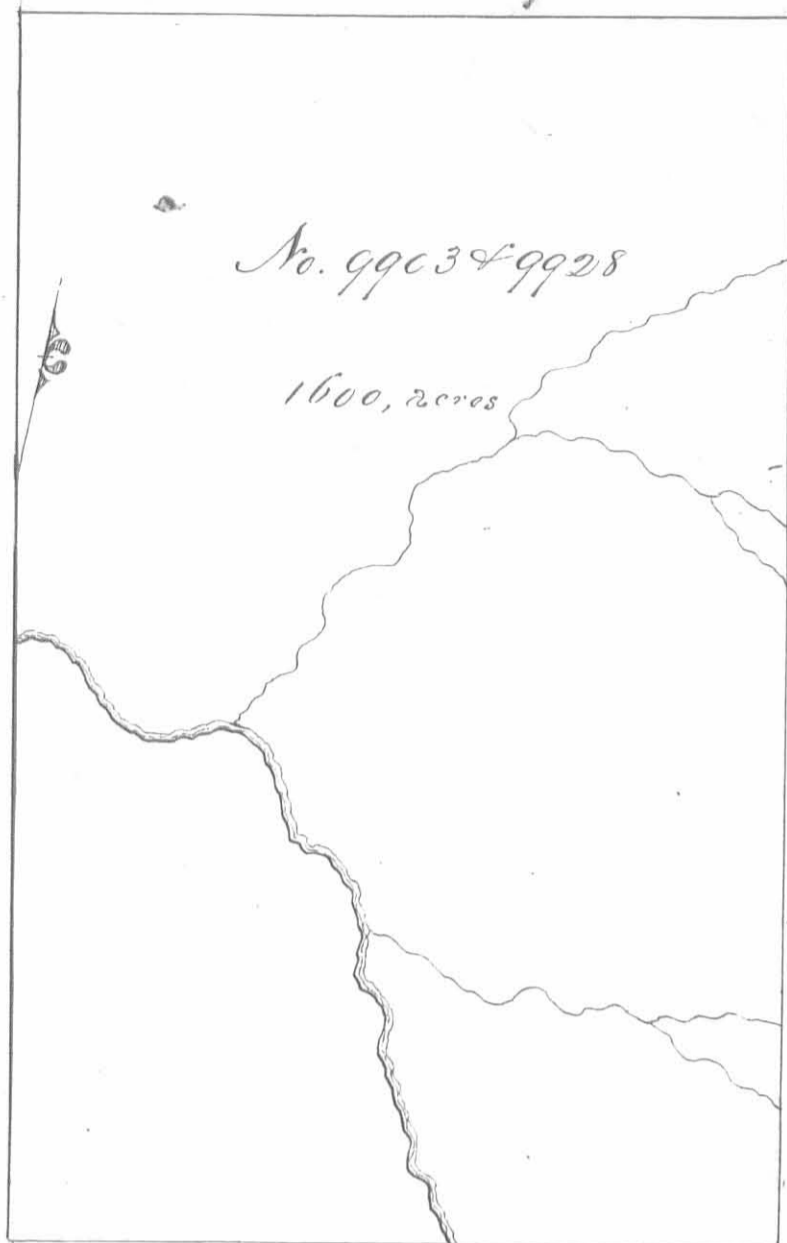
James Henry & Co.

Benjamin McColloch M.R.

Thomas S. McArthur D.S.

January 15th 1821

March 30th 1821

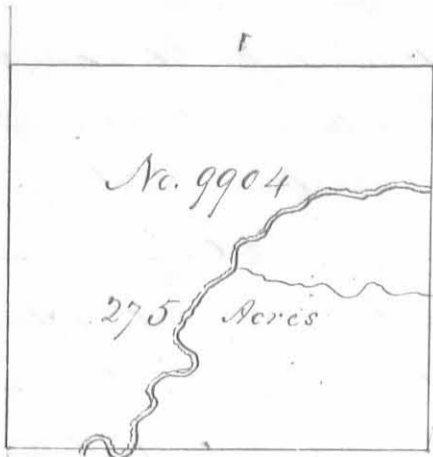


Surveyed for William St Bernard
 1600 acres of land in five Military
 Warrants No. 6187. 6188. 6189.
 6195 and 400 acres on part of 6194
 on Cherokee mans run, a branch
 of big Miami; beginning at a
 bur oak, hickory, red elm and red
 oak northeast corner to the repre-
 sentatives of Michael Rudolphs
 survey No. 9902 and southeast
 corner to Nathan Reers survey
 No 9927; thence with Rudolphs
 line S. 12 E. 400 poles crossing the
 run at 87 poles to a bur oak and
 small elm their southeast corner
 and northwest corner to Hubbard
 Wyatts survey No 9551; thence
 with Wyatts line N 75 E 400 poles
 crossing the run at 230 poles to
 three hickories northeast corner

to said survey and southwest corner to Robert Gambles survey No.
 9904 of 725 acres, thence N. 12. W. 640 poles crossing a branch at
~~112 a drain at 346 a small branch at 74 and at 112 a drain at~~
 346 a small branch at 372 passing Gambles northwest corner
 at 400 and with a line of Robert Means survey No. 9929 entered
 a large prairie at 460 poles to a stake in the prairie in said
 Means line; thence S. 78. W 400 poles leaving the prairie at 45
 poles to a white oak in the line of Nathan Reers said survey
 thence with said line S 12 E 240 poles to the beginning.

George Henry 3
 James Henry 3 6.6
 David Chapman M. k. r

Saml Forrer D. S
 January 15th 1822
 August 13th 1822

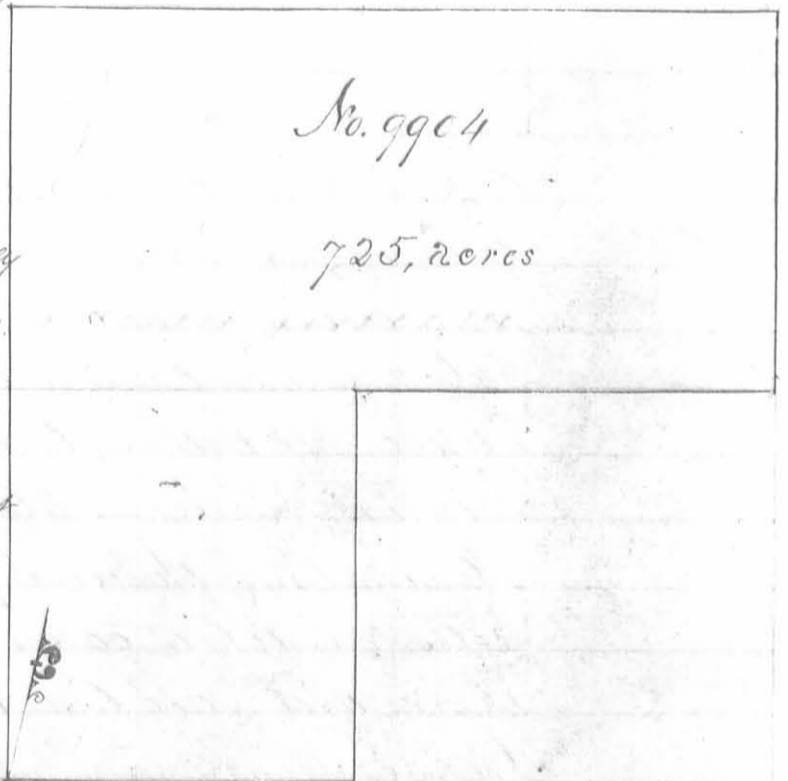


Surveyed for Robert Gamble 275 acres of land on part of a Military Warrant No 1494 on the North fork of Cherokee mans run; beginning at five beeches Northeast corner to McArthur and Hites Survey No 10307 and Northwest corner to Mark Hardins Survey No 9853; thence with McArthur and Hites survey S. 78 N 220 poles crossing the run at 158 at 165 and at 170 poles to two hickories; thence N. 12. W 200 poles crossing Mills road at 144 poles to two white oaks and a hickory; thence N. 78 E. 220 poles crossing the road at 34 poles to a dogwood, hickory and ironwood; thence S 12 E 200 poles crossing the run at 166 and a branch at 118 poles to the beginning.

John McCoy 3
 James Saylor 3 66
 John B. Migus M.k.r.

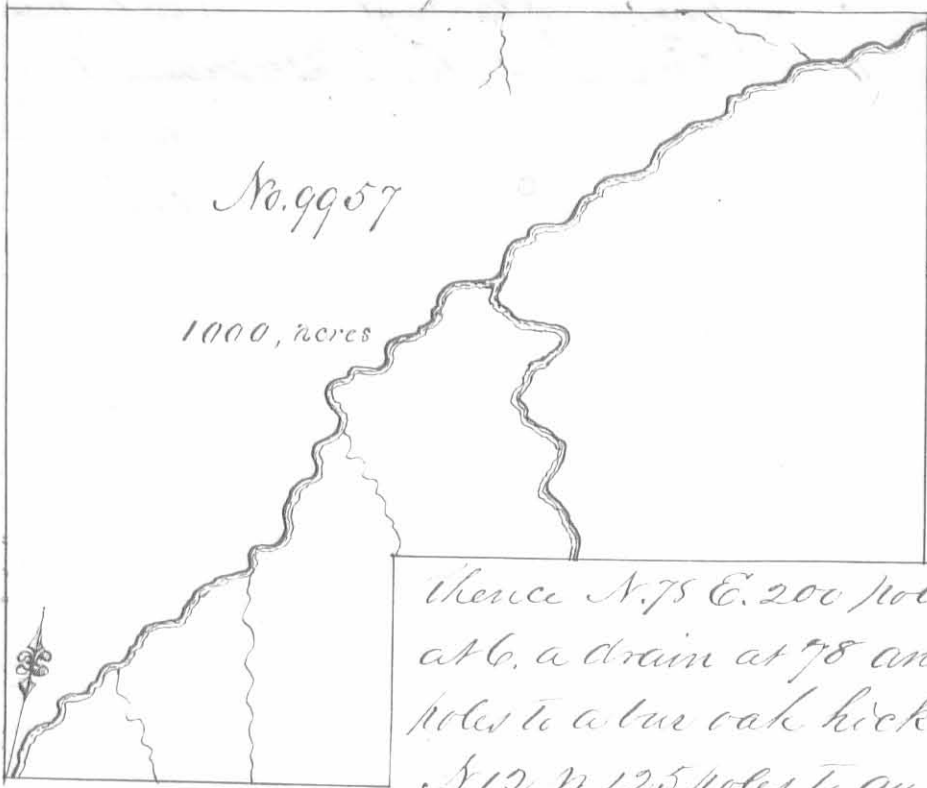
Thomas S. McArthur D.S.
 June 10th 1821.
 July 20. 1821.

Surveyed for Robert Gamble 725 acres of land on part of a Military Warrant No 1494 on the waters of the big Miami; beginning at three hickories at the east corner to Hubbard & Myatt's Survey No 9881 South east corner of William H Beards entry No 9903, thence with a line of said entry N 12 W 400 poles crossing a branch at 74 and at 112 a drain at 346 and one at 372 poles to an Elm, black ash and hickory; thence N 78 E 400 poles crossing a drain at 140 and Halls road at 274 poles a hickory and sugar tree, thence S 12 E. 200 poles crossing the head of a drain at 28 poles, to a dogwood hickory and ironwood thence S 78 W. 220 poles crossing the road at 156 poles to two white oaks and a hickory; thence S. 12. E. 200 poles crossing the road at 56 poles to two hickories; thence S 78 W 180 poles crossing the road at 56 poles to the beginning.



John McCoy 3
 Saml Saylor 3 66
 John B. Migus M.k.r.

Thos. S. McArthur D.S.
 June 10th 1821
 July 20th 1821

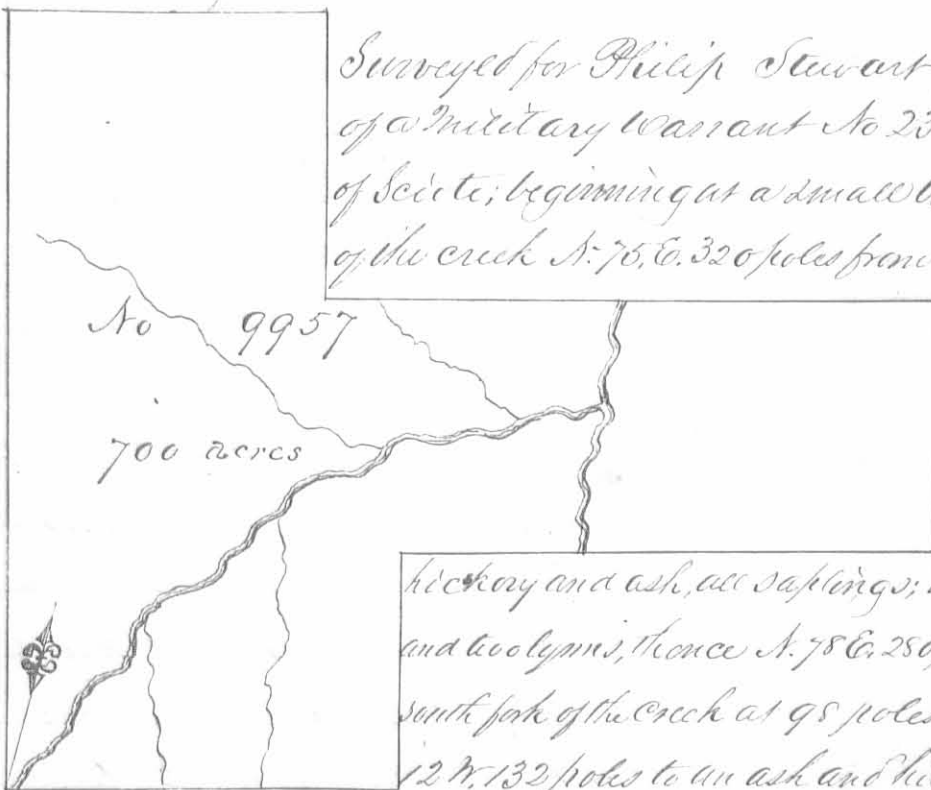


Surveyed for Philip Stewart
1000 acres of land part of a
military warrant No. 2338
on the waters of Scioto: begin-
ning at a small buckeye
and two bur oaks 320 poles
N. 78. E from the northeast
corner of Abraham Kirk-
patrick's survey No 1006

thence N. 75 E. 200 poles crossing a small creek
at 6, a drain at 78 and a small branch at 131
poles to a bur oak hickory and ash sapling, thence
N. 12. N 125 poles to an ash and two lynnus, thence
N. 78 E, 280 poles crossing a drain at three and a large branch
at 98 poles to a large sugar tree; thence N. 12 N. 282 poles crossing
the creek at 272 poles to a large elm hickory and sugar tree; thence
S. 78. N. 480 poles crossing a branch at 110 and a drain at 218 poles
to two beeches, thence S. 12. E, 407 poles to the beginning.

Simon Hager 3
Abraham Hager 3 C.C.
David Chapman M.R.

Thos S. Arthur D.S.
July 15th 1821
July 24th 1821



Surveyed for Philip Stewart 700 acres of land on part
of a military warrant No 2338 on Mud Cat Creek a branch
of Scioto; beginning at a small buckeye and bur oak on the bank
of the creek N. 75. E. 320 poles from the northeast corner of Abraham

Kirkpatrick's survey No 1006, thence
N. 78 E. 200 poles crossing the creek
at 6, a drain at 78 and a small
branch at 131 poles to a bur oak

hickory and ash, all saplings; thence N. 12. N. 125 poles to an ash
and two lynnus, thence N. 78 E. 280 poles crossing a drain at 13 and the
south fork of the creek at 98 poles to a large sugar tree, thence S
12 N. 132 poles to an ash and hickory; thence S. 78 N. 320 poles

crossing the creek at 163 and a drain at 286 poles to a lynn, sugar tree
and cherry tree; thence N. 12. N. 150 poles to three beeches, thence S 78 N.
160 poles to two beeches; thence S. 12. E, 407 poles to the beginning.

Nirvan Perkins 3
Theodore McDonald 3 C.C.
David Chapman M.R.

Thomas S. Arthur D.S.
June 7th 1822
April 12th 1823



Surveyed for Simon Somers 250 acres of land on part of a Military Warrant No 6198 on the waters of big Miami; beginning at a hickory, red oak and sugar tree southeast corner to said Somers survey No 9905 for 500 acres in the line of Mark Hardins survey No. 9883; thence with his line N. 77¹/₂ E 200 poles to a white oak and ash northeast corner to said Hardins survey and northwest corner to Joseph Heits survey No 9884 thence N 12 W, 200 poles to a beech and sugar tree; thence S 77¹/₂ E 200 poles to two small sugar trees; thence S. 12. E. 200 poles crossing a branch at 70 poles to the beginning.

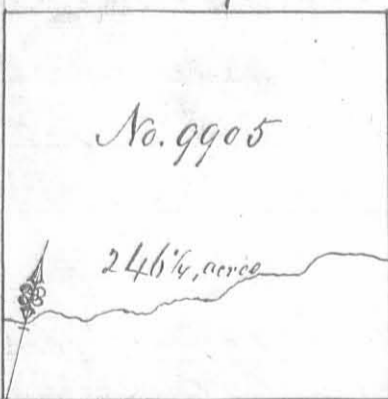
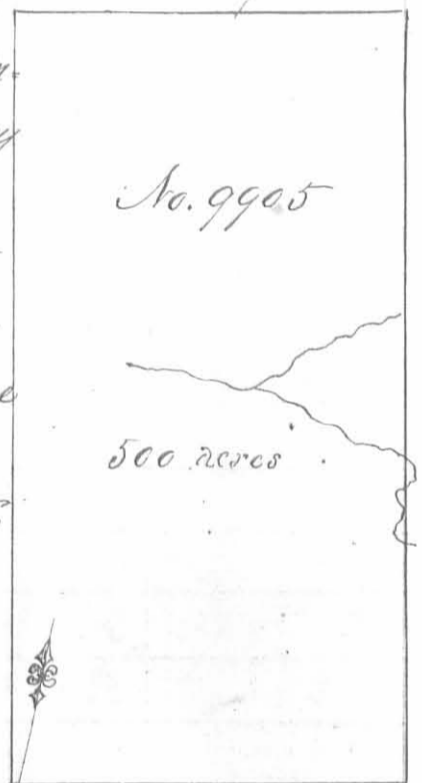
Levi D Sharp 3
 Melkiah Rosbrag 3 66
 Wilson S Thompson M.k.r.

Samuel Forer D.S
 January 10th 1820
 March 15th 1821

Surveyed for Simon Somers 500 acres of land on part of a Military Warrant No 3585 on the waters of big Miami; beginning at four beeches southeast corner to Robert Gaubles survey No 9904, thence with Mark Hardins line N. 77¹/₂ E 200 poles to a hickory red oak and sugar tree; thence N 12 W 400 poles crossing a branch at 194 and one at 240 poles to two black oaks, a sugar tree, and hickory; thence S. 78. W. 200 poles to a sugar tree and hickory northeast corner to said Gauble survey; thence with his line S. 12. E 400 poles to the beginning.

Levi D Sharp 3
 Melkiah Rosbrag 3 66
 Wilson S Thompson M.k.r.

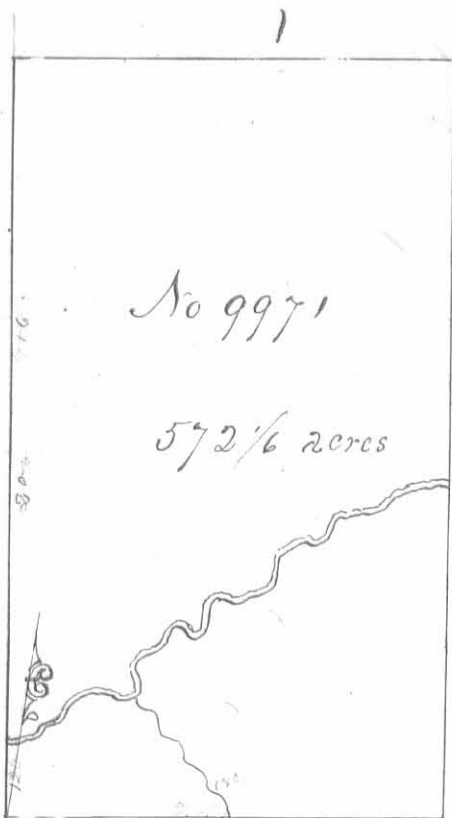
Samuel Forer D.S
 January 10th 1820
 March 15th 1821



Surveyed for Simon Somers 246¹/₄ acres of land on part of a Military Warrant No. 6198 on the waters of big Miami; beginning at two small sugar trees Northwest corner to said Somers survey No 9905 for 250 acres in a line of said Somers survey No 9905 for 500 acres; thence N 77¹/₂ E 20 poles to two beeches and a sugar tree northeast corner to survey of 250 acres; thence N 12 W 196 poles crossing a branch at 70 poles to a hickory and sugar tree; thence S. 78 W. 200 poles to a sugar tree hickory and two black oaks northeast corner to said Somers 500 acre survey; thence with said line S 12 E. 198 poles to the beginning.

Levi D Sharp 3
 Melkiah Rosbrag 3 66
 Wilson S Thompson M.k.r.

Samuel Forer D.S
 January 10th 1820
 March 15th 1821



Surveyed for the Representatives of Benjamin Temple, Nathaniel Beale and the representatives of John Crittenden 572 $\frac{1}{6}$ acres of land on the following Military Warrants; Temples Representatives 277 $\frac{5}{6}$ acres on part of No 5417, Beale 100 acres on No. 5834 and 50 acres on part of No 5835 and Crittendens Representatives 144 $\frac{1}{3}$ acres on part of No. 5859 on the waters of Big Miami; beginning at two hickories southeast corner to the Representatives of Robert Youngs survey No 9970; thence N. 78. E 229 poles crossing a branch at 120 poles to a beech elm and buckeye; thence N. 12. W 400 poles crossing Big Miami to a buckeye; thence S. 78. W. 229 poles to two beeches, thence S. 12. E. 400 poles crossing the river at 358 poles to the beginning.

Levi D Sharp
 Hilkiak Rosebag 3 C. C.
 Wilson S Thompson M.k.s.

Samuel Forrer D.S.
 March 2nd 1820
 March 15th 1821

Surveyed for the Representatives of Benjamin Temple 277 $\frac{5}{6}$ acres of land on part of a Military Warrant No 5417 on the waters of Big Miami. Beginning at two beeches northeast corner to Nathaniel Beales survey No 9971. 140 $\frac{1}{2}$ poles from the northeast corner of Michael Bangers survey No. 9950, thence N. 12. W. 259 $\frac{1}{2}$ poles crossing the main branch of big miami at 109 poles to an elm, ash and hackberry, thence S. 87 W 171 poles to a buckeye northeast corner to Temple and others survey No. 9971, thence with their line S. 12 E. 259 $\frac{1}{2}$ poles to an elm and buckeye northwest corner to said Beales survey; thence N. 78 E 171 poles to the beginning.

Levi D Sharp
 Hilkiak Rosebag 3 C. C.
 Wilson S Thompson M.k.s.

Samuel Forrer D.S.
 March 2nd 1820
 March 5th 1821

