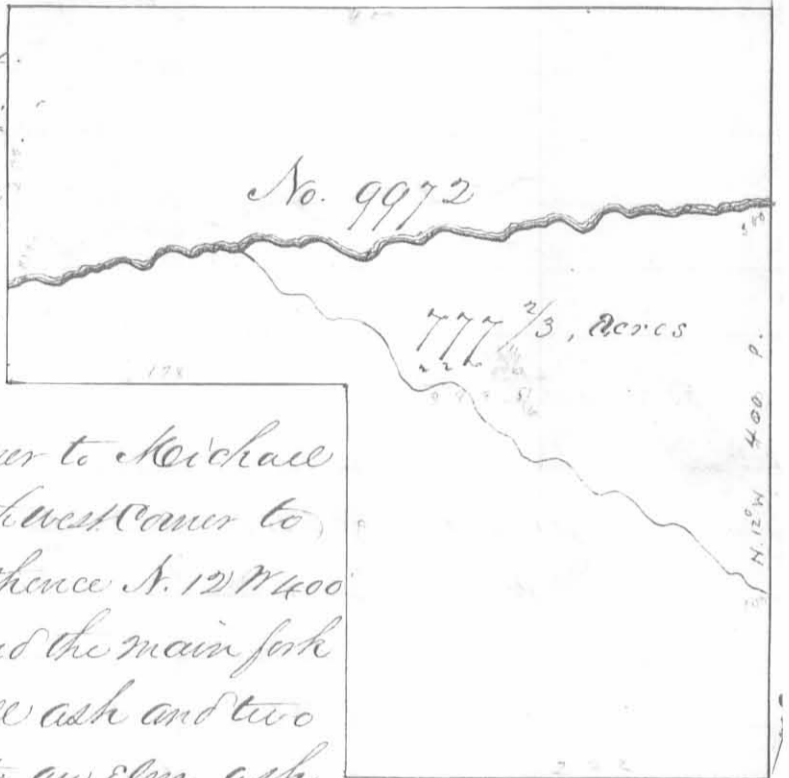
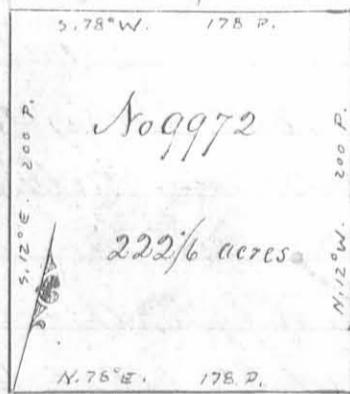


Surveyed for the Representatives of John Gallison, James Taylor Esq<sup>r</sup> and Robert Kirk 777<sup>2</sup>/<sub>3</sub> acres of land on a Military Warrant and part of one; Gallison 555 acres on No. 5457 Taylor and Kirk 222<sup>1</sup>/<sub>6</sub> acres on No. 5146 on the Waters of Big Miami; beginning at two buckeyes and a beech northeast corner to Michael Bowyers survey No. 9951 and Northwest corner to Robert Means survey No. 9952; thence N. 12 W. 400 poles, crossing a branch at 100 and the main fork of Miami at 300 poles to a small ash and two beeches; thence S. 78, W. 400 poles to an elm ash and hack-berry northeast corner to Temple and others survey No. 9971 thence with their line S. 12 E. 200 poles crossing the fork at 150 poles to a beech northwest corner to Robert Kirks survey No. 9972; thence with his line N. 78, E. 178 poles to an ash dogwood and beech northeast corner to said Kirks survey; thence with his east line S 12 E 200 poles to a buckeye and two beeches Kirk southeast corner; thence with Bowyers line N. 78, E. 222 poles to the beginning.



Levi D. Sharp  
 Hilkiak Rosebrag C. C.  
 Wilson S. Thompson Mkr.

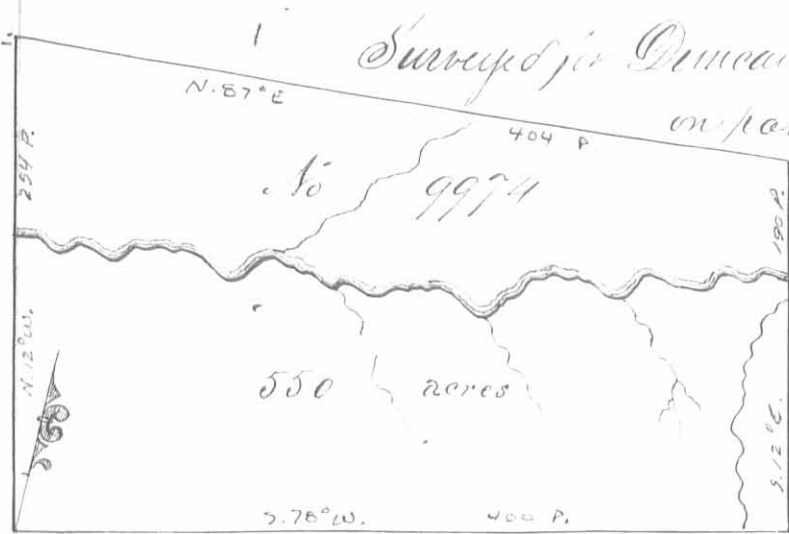
Samuel Forrer D. S.  
 March 3<sup>d</sup> 1820  
 March 12<sup>th</sup> 1821



Surveyed for Robert Kirk 222<sup>1</sup>/<sub>6</sub> acres of land on part of a Military Warrant No. 5146 on the waters of Big Miami; Beginning at the south east corner of Temple and others survey No. 9971 and North east corner of Michael Bowyers survey No. 9950; thence with Bowyers line of his survey No. 9951 N. 78 E. 178 poles to a buckeye and two beeches; thence N. 12 W. 200 poles to an ash dogwood and beech; thence S. 78 W. 178 poles to a beech in the line of survey No. 9971; thence with said line S. 12 E. 200 poles to the beginning.

Levi D. Sharp  
 Hilkiak Rosebrag C. C.  
 Wilson S. Thompson Mkr.

Samuel Forrer D. S.  
 March 3<sup>d</sup> 1820  
 March 12<sup>th</sup> 1821



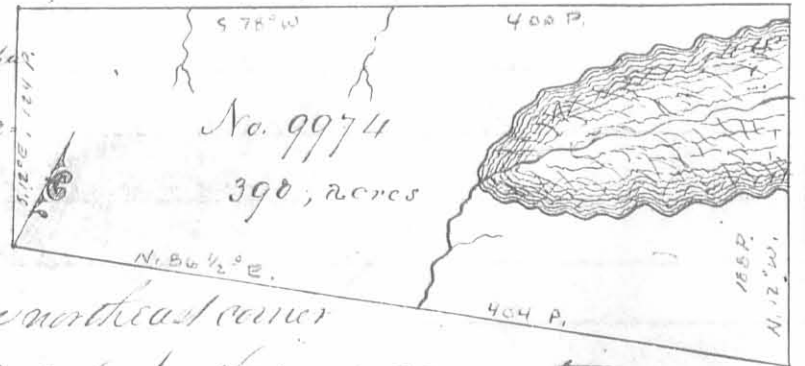
Survey for Duncan McArthur of 550 acres of land on part of two Military Warrants; 500 acres on No. 5637 and 50 acres on No. 3104 on the big Miami; beginning at two beeches and a sugar tree southeast corner to Robert Means survey No. 9973; thence with his line N. 12. W. 254 poles crossing the

Miami at 130 poles to two beeches and a buckeye; thence N. 8. E. 404 poles crossing the beaver dam branch to a beech and sugar tree; thence S. 12 E. 190 poles crossing a branch at 18 the Miami at 37 and a branch at 62 poles to four beeches and a sugar tree; thence S. 78. W. 400 poles crossing a small branch at 24 and one at 300 poles to the beginning.

George Henry 3  
 James Henry 3 C.C.  
 Benjamin McColloch M.K.R.

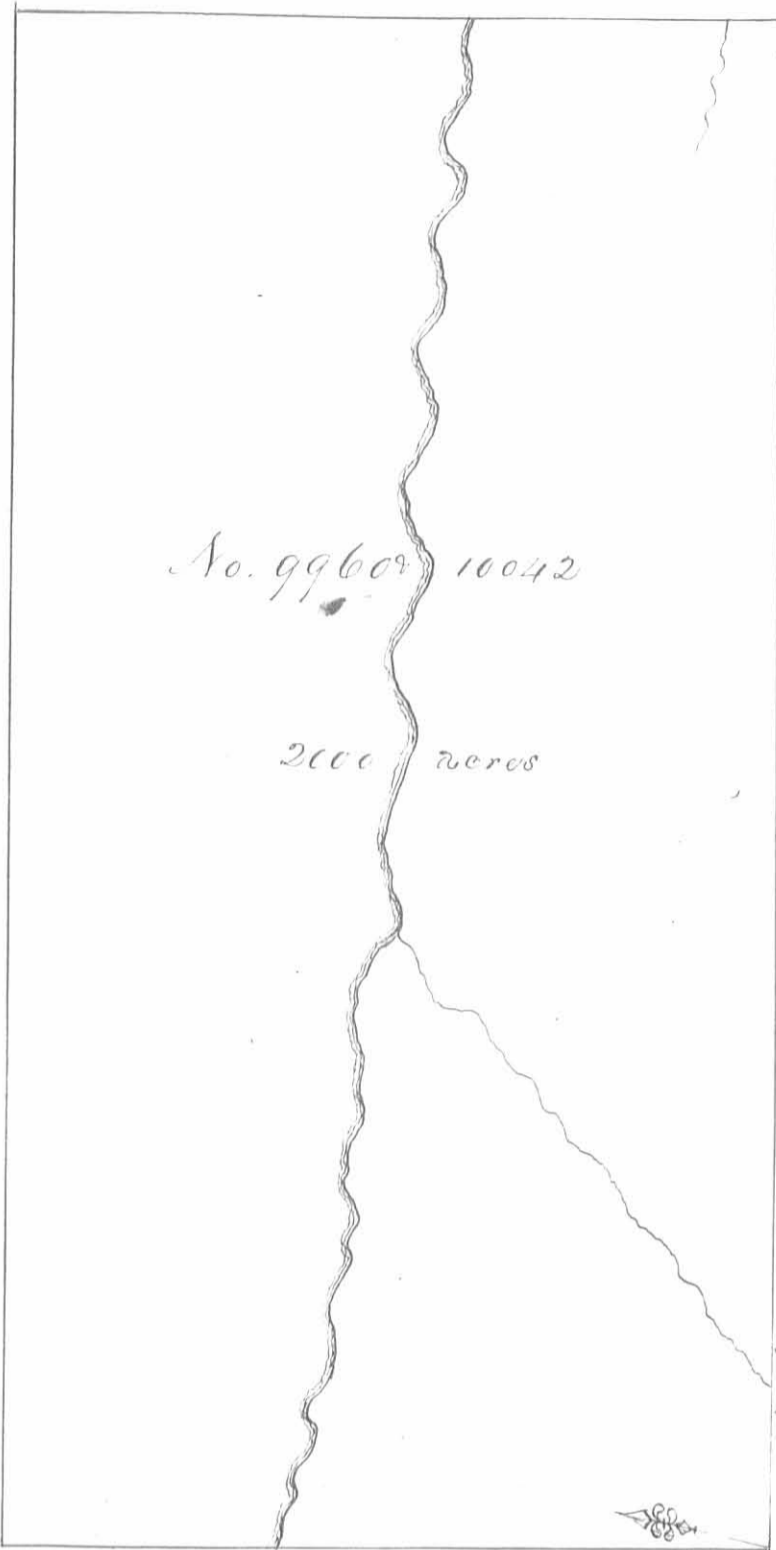
Thomas S. McArthur D.S.  
 January 28<sup>th</sup> 1820  
 March 28<sup>th</sup> 1821

Survey for Duncan McArthur of 390 acres of land on part of a Military warrant No. 5743 on the waters of the Big Miami; beginning at two beeches, a hickory and buckeye northeast corner to Robert Means survey No. 9973 and North west corner to said McArthur's survey No. 9974 for 550 acres; thence with the line of survey No. 9974, N. 86. S. E. 404 poles crossing the Beaver Pond branch to a beech and sugar tree; thence N. 12. W. 188 poles crossing the beaver pond prairie from 90 poles to the corner two maples from one root an ash and elm northwest corner to survey No. 9975; thence S. 78. W. 400 poles crossing a branch at 204 and one at 310 poles to two beeches and a sugar tree; thence S. 12 E. 124 poles to the beginning.



George Henry 3  
 James Henry 3 C.C.  
 Benjamin McColloch M.K.R.

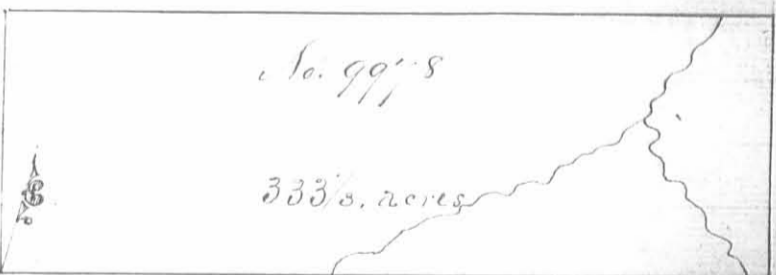
Thomas S. McArthur D.S.  
 January 3, 1821  
 September 7<sup>th</sup> 1821



Surveyed for the Representatives of Richard Rudolph dec'd 2000 acres of land on part of a Military Warrant No. 6310 on Rush Creek: Beginning at an Elm tree and sugar tree south east corner to Robert McCarus Survey No. 9959; thence with his line N. 12. W. 400 poles crossing the Creek at 265 poles to a white oak iron wood and sugar tree Southeast corner to said survey thence N. 78 E. 800 poles to two elms and a hickory thence S 12 E. 400 poles crossing the Creek at 230 and a branch at 373 poles to two sugar trees and a large hickory; thence S 78 W. 800 poles crossing a branch at 713 poles to the beginning.

James Thompson  
 James McArthur 366 Thomas McArthur D  
 November 10<sup>th</sup> 1821  
 McArthur Bernier M.k., February 12<sup>th</sup> 1822.

Surveyed for the Representatives of John Spotwood 333 1/3 acres of land on a Military Warrant No. 5146 on the waters of Scioto: Beginning at two beeches Southeast corner to Robert McCarus Survey No. 9977 and and Northeast corner to James Wright's survey No 9956, thence N. 78, E. 400 poles crossing a branch at 176 and one at 390 poles to an ash and beech, thence N. 12. W. 133 1/2 poles to a dog-wood and iron wood; thence S. 78 W. 400 poles to a stake in McCarus line, thence with said line S. 12 E. 133 1/3 poles to the beginning.



Levi O Tharp  
 Nathaniel Rosinag C.G.  
 Wilson S. Thompson M. C. R.

Samuel Forrer, G. S.  
 March 4<sup>th</sup> 1820  
 March 10<sup>th</sup> 1821



No. 9978

666 $\frac{2}{3}$  acres

Surveyed for Robert Porterfield and James Taylor a part 666 $\frac{2}{3}$  acres of land on a Military warrant No. 5085 on the waters of Scioto: Beginning at two ashes North east corner to Robert Means survey No 9977, thence with his line S. 12. E. 266 $\frac{2}{3}$  poles to a Stake Northwest corner to

Spotswoods survey No 9978; thence with his line N. 78. E. 400 poles to a dogwood and Ironwood north east corner to said survey; thence N. 12 W 266 $\frac{2}{3}$  poles to a buckeye and two hickories, thence S. 78 W 400 poles to the beginning.

Levi D. Sharp  
 Melkiah Roxbrag  
 Wilson L. Thompson M.k.r.

Samuel Forrer D.S.  
 March 4<sup>th</sup> 1820  
 March 10<sup>th</sup> 1821

Surveyed for Francis Meier 1000 acres of land on part of a Military warrant No. 1474 on the waters of the Big Miami: Beginning thru beches Southeast corner of Miller, Green and Taylors survey No. 9975; thence N. 78 E. 400 poles to a hickory, beech and sugar tree North east corner to James Bustars survey No. 9955, thence N. 12. W 400 poles to a sugar tree and three beches; thence S 78 W 400 poles to two beches Northeast corner of said Millers and others survey; thence with the line of said survey S. 12 E. 400 poles crossing a branch at 54 poles to the beginning.

Levi D. Sharp  
 Melkiah Roxbrag  
 Wilson L. Thompson M.k.r.

No. 9976

1000 acres

Sam<sup>l</sup> Forrer D.S.  
 March 4<sup>th</sup> 1820  
 July 21<sup>st</sup> 1820



Surveyed for Walter Dun

560 acres of land on part of four Military Warrants, 63 acres on No. 6222. 47 acres on No. 6217. 350 acres on No. 5385 and 100 acres on No. 6218 on Mad River: Beginning at two white oaks southerly corner to Hobland & Haueys survey No. 3242 in the line of said Haueys survey No. 3222, thence with the line of the first mentioned survey, N. 21 W. 107 poles to a white oak, hickory and a stake westerly corner to the said survey; thence with another line thereof, N. 69 E. 152 poles to a stake in said line and in the line of Thomas Parkers survey No. 4497 thence with Parkers line N. 26. 40 W. 93 poles to two white oaks and a hickory westerly corner to Parkers said survey; thence N. 69 E. 22 poles to a white oak and hickory corner to Parkers said survey thence N. 75. W. 90 poles to a white oak two dogwoods and a mulberry easterly corner to James Denny's survey No. 4957; thence with Denny's line S. 30 W. 156 poles crossing a small spring branch at 104 and a large spring branch at 142 poles to an elm and two dogwoods corner to Denny's said survey; thence with another of his lines S. 57 W. 208 poles crossing Mad river at 154 poles to a stake another corner of Denny's; thence with another of Denny's lines S. 30 E. 25 poles to a stake corner to Denny's said survey; thence S. 60. W. 200 poles passing a stake on the side of a brushy ridge at 170 poles the most southerly corner of Denny's said survey and with the line of said Duns survey No. 8303 and 8485 to a stake corner to Duns said survey in the line of Anthony Singleton's survey No. 4943 thence with Singleton's line S. 80 W. 196 poles crossing Mad river to a hickory north easterly corner to Singleton's said survey; thence with another of his lines S. 20 E. 90 poles crossing a branch at 70 poles to two hickories and a white oak an old marked corner in said line; thence S. 86 E. 50 poles to a white oak and red oak an old marked corner; thence S. 69 E. 233 poles crossing a branch at 34 poles passing the westerly corner of Haueys survey No. 3222 at 73 poles and with his line to the beginning.

Elusly Pope

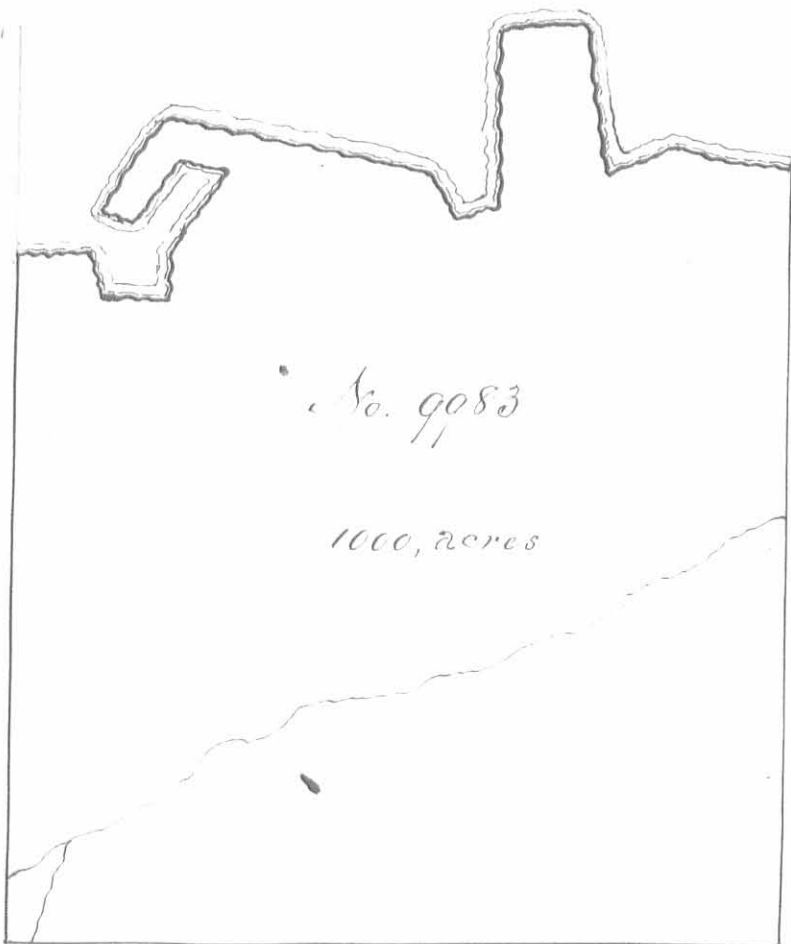
Isham Meate

Asa S. Hunt M. k. r.

Walter Dun, D. S.

January 3. 1820

February 8<sup>th</sup> 1820



No. 9983

1000, acres

Surveyed for the Representatives of Michael Rudolph 1000 acres of land on part of a Military warrant on the Scioto: Beginning at four Sycamores and an ash upper corner on the river to Alexander Farkers heirs entry No 9984, thence with their line S. 12. E. 406 poles crossing a branch at 187 poles to two elms and a lynn in said line; thence S. 78 W 1100 poles crossing a branch at 392 poles to an elm lynn and sugar tree; thence N. 12. W 360 poles crossing a branch and passing the lower back corner

of Elizabeth Poligers and others survey No 9996 at 34 poles to two cocks and a sugar tree lower corner on the river to said survey; thence down the river binding thereon, N 78 E 42. S 14 E. 24, N 78 E. 36, N 12 W. 23. N. 24 E 51, West 24, S 25. W. 41 N. 88 W 18. N. 25 E. 61. N. 88 E. 139, S 40 E 30, N. 62 E. 22, N 12 W 92. N. 78. E 46, S 17 E. 78, N 58 E 42. N. 85. E. 60 poles to the beginning.

Francis Thompson

Dan's McArthur &amp; C. C.

Matthew Bannock M. R.

Thos J. McArthur D. S.

December 17<sup>th</sup> 1821February 13<sup>th</sup> 1822

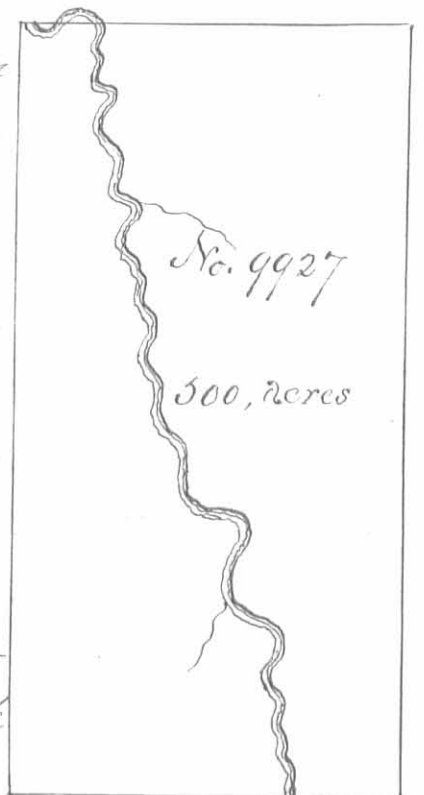
Surveyed for Nathan Reeves 500 acres of land on part of a Military Warrant No 6246 on Cherokee mans run; beginning at a black oak, red oak, elms and hickory Northeast corner to the Representatives of Michael Rudolph's survey No. 9902 and Southwest corner to Mrs. A. H. H. and others entry No. 9928 thence S. 78 W 200 poles crossing Cherokee mans run at 58 poles to an ash in a swamp; thence N. 12 W 400 poles to two luckettes and a small ash in run bottom; thence N. 78 E. 200 poles crossing the run at 3 at 14 and at 36 poles to a black oak and small hickory; thence S 12 E 400 poles to the beginning.

George Henry

James Henry &amp; C. C.

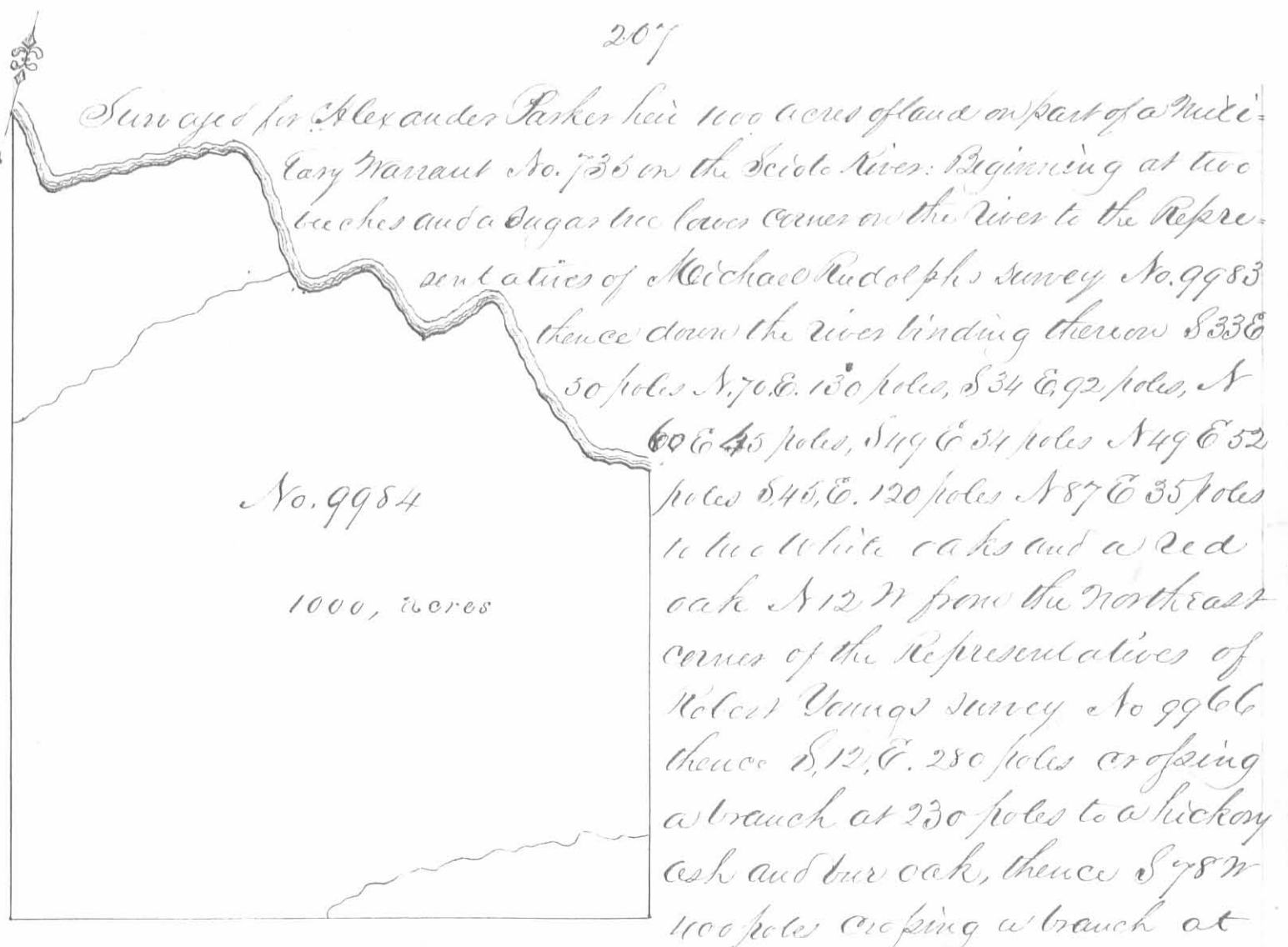
Benjamin McCollack M. R.

Thomas J. McArthur D. S.

January 13<sup>th</sup> 1821May 30<sup>th</sup> 1821

No. 9927

500, acres



200 poles to two beeches a cypress and elm; thence N. 12 W. 506 poles crossing a branch at 312 poles to the beginning.

William Lane

Matthew Bonner C.C.

Sylvanus Bonner M.k.r.

Thos J M Arthur D.S.

December 16<sup>th</sup> 1822

February 1<sup>st</sup> 1823

Surveyed for Edward Matts approx 50 acres of land on part of a Military Warrant No 6203 on the waters of Head river Beginning at three beeches southerly corner to Perkins and Aldridges survey No. 9371 in the line of William Agans survey No. 4682 running with Perkins and Aldridges line N. 75 W. 76 poles crossing a small branch to two poplars North easterly corner to Thomas Threatts survey No. 4661 thence with his line S. 15 W. 240 poles to a cypress and poplar corner to said Threatts survey; thence S. 65 E 36 poles to two sugar trees an elm and cypress corner to said Agans survey; thence with his line N. 25 E. 250 poles crossing several small branches to the beginning.

Josiah Cutland

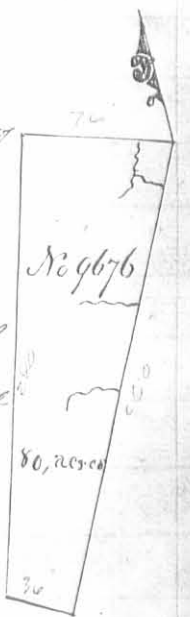
Samuel Cutland C.C.

John Cutland M.k.r.

James McConary Jun D.S.

March 13<sup>th</sup> 1819

May 4<sup>th</sup> 1819







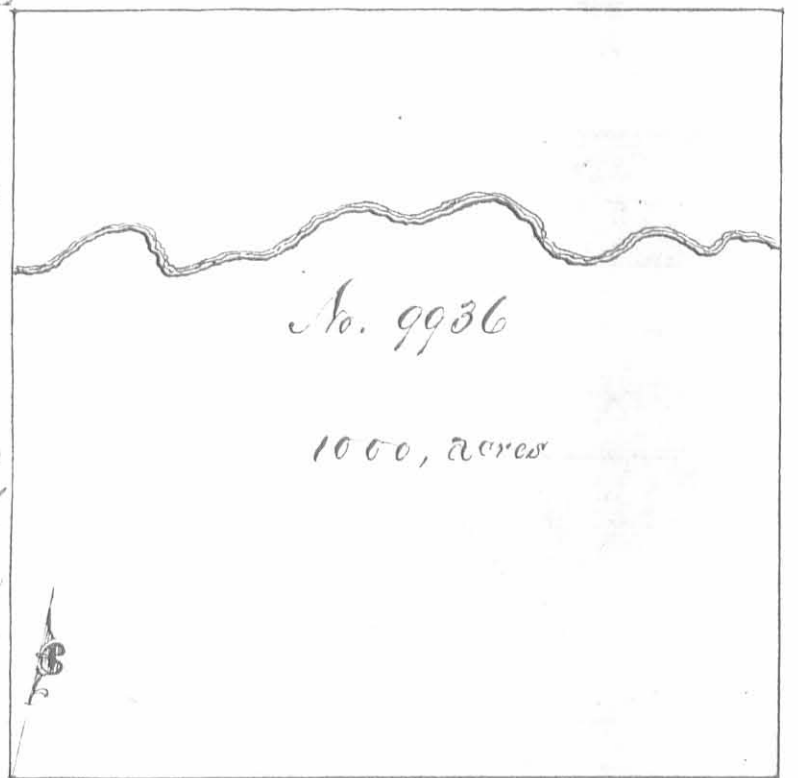
Surveyed for Mulford Wyatt  
 Executor 1000 acres of land on  
 a Military Warrant No 62-  
 100, on the waters of Big Miami.  
 Beginning at two white oaks  
 South east corner to George Dawson's  
 entry No. 9880 in the Greenville  
 Treaty line; thence with said line  
 N. 78. E. 400 poles to a black oak  
 and two white oaks; thence N. 12  
 W. 400 poles crossing Cherokee man's  
 run at 80 poles to a red oak, black  
 white oak and hickory; thence

S. 78, W. 400 poles crossing the run at 152 poles to a bur oak and elm  
 Northeast corner to said Dawson's survey; thence with a line of said  
 survey S. 12, E. 400 poles to the beginning.

Levi D. Maspe 3  
 Silsiah Postbag 3 C.C.  
 Nelson S. Thompson M.k.r.

Samuel Forrer D.S.  
 January 3<sup>d</sup> 1820  
 January 25<sup>th</sup> 1821

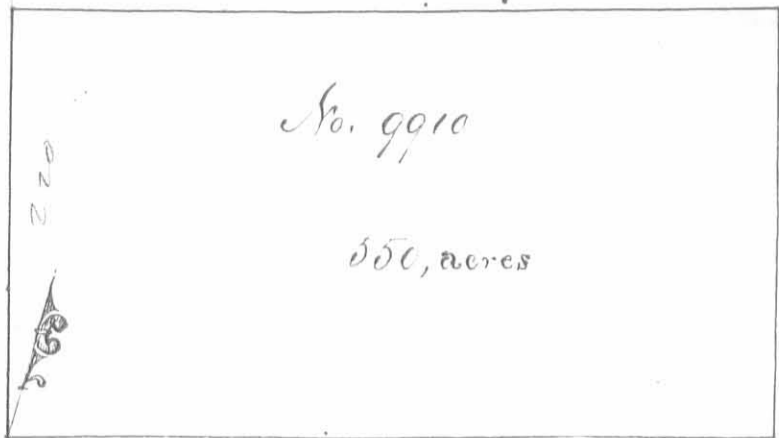
Surveyed for James Berwick 1000  
 acres of land on part of a Military  
 Warrant No. 4036 on Rush Creek.  
 Beginning at three beeches at the  
 Northeast corner of Entry No 9910  
 for 1000 acres in the name of James  
 Gilman and John Moore; thence  
 N. 12, W. 400 poles crossing the creek  
 at 270 poles to three beeches; thence  
 N. 78 E. 400 poles to two ashes and  
 an elm thence S 12 E 400 poles  
 crossing the creek at 125 poles to  
 three beeches; thence S 78 W. 400 poles to the beginning.



Samuel Lane 3  
 Joseph Collins 3 C.C.  
 William Wapington M.k.r.

Thomas S. Arthur D.S.  
 Feb'y 14<sup>th</sup> 1826  
 Feb'y 23<sup>d</sup> 1826





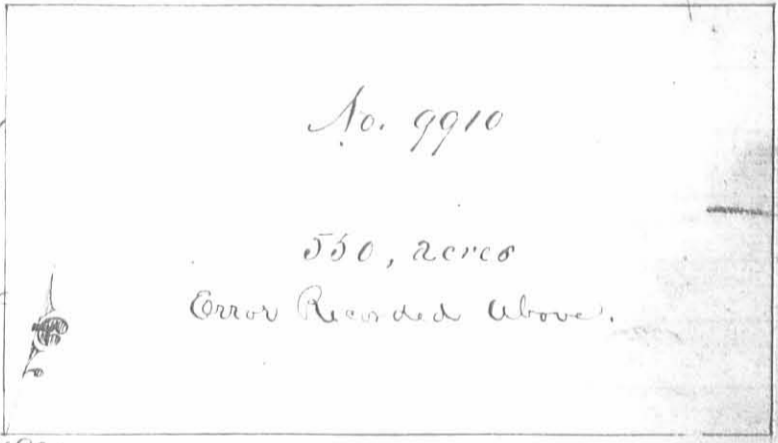
Surveyed for James Gilmore  
 550 acres of land on part of a mil-  
 itary warrant No. 5157 on the  
 waters of Rush Creek; Beginning  
 at two sugar trees and a beech south  
 east corner to Penabitan Taylors  
 and others survey No 9909, thence  
 N: 12, W. 220 poles to a stake in

the line of William Mc Kentons survey No. 13199; thence S 12 E. 220 poles  
 passing a sugar tree and beech north west corner of John Griffiths  
 100 acre survey No. 9911 at 60 poles to two sugar trees north east  
 corner of the Representatives of Charles Porterfields survey No. 9888  
 thence with Portersfields line S. 78. W. 400 poles to the beginning.

David Hunt  
 Michael Hunt  
 John Cole M.k.r.

E. P. Kendrick D.S.  
 October 6, 1830  
 November 12, 1830

Surveyed for James Gilmore 550  
 acres of land on part of a Military  
 warrant No. 5157 on the waters  
 of Rush Creek: Beginning at  
 two sugar trees and a beech south  
 east corner to Penabitan Taylors  
 and others survey, No 9909. thence



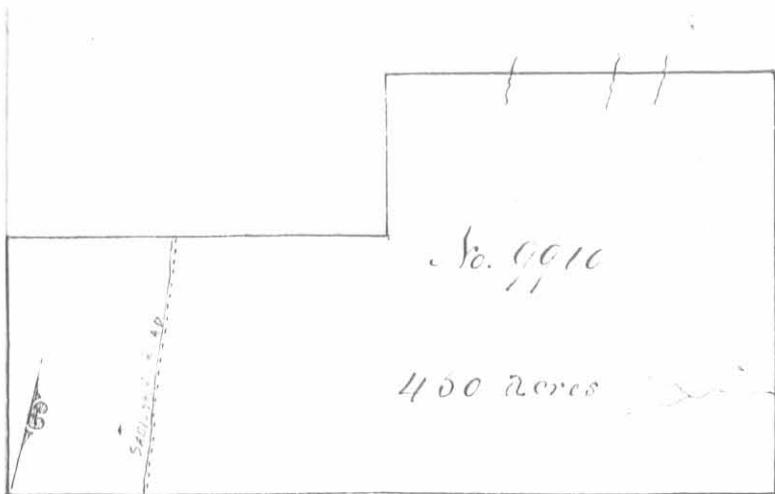
N. 12 W. 220 poles to a stake in the line of William Mc Kentons  
 survey No. 13199, thence S. 12 E. 220 poles passing a sugar tree  
 and beech north west corner of John Griffiths 100 acre survey  
 No. 9911 at 60 poles to two sugar trees north east corner of the Rep-  
 resentatives of Charles Porterfields survey No. 9888, thence with  
 Portersfields line S. 78 W. 400 poles to the beginning.

David Hunt  
 Michael Hunt  
 John Cole M.k.r.

E. P. Kendrick D.S.  
 October 6, 1830  
 November 12, 1830

Note. By mistake this survey was twice copied.

H. D. ...



Surveyed for the Representatives of John Moore 450 acres of land on part of a Military Warrant No. 3160 on the waters of Rush Creek Beginning at a blue ash, three Sugar trees and a beech southeast corner to Pondleton Taylor and others survey No 9909 and North

west corner to the Representatives of Charles Porterfield's survey No 9888 thence with the line of the last mentioned survey N. 78. E. 400 poles crossing the road from Gainesfield to Sandusky to two Sugar trees northeast corner thereof near the gravelly spring; thence N. 12° W. 220 poles crossing a branch at 50 poles to three beeches southeast corner to Duncan McArthur's survey No. 10631; thence with the line thereof S. 73. N. 200 poles crossing several small drains to a small beech; thence S. 12° E. 82 poles to a stake; thence S. 73. N. 200 poles crossing the road to a stake in the east line of said survey No. 9909, thence with said line S. 12. E. 138 poles to the beginning.

John McCoy  
James Supter, S. C. C.  
John W. Meigs M. R.

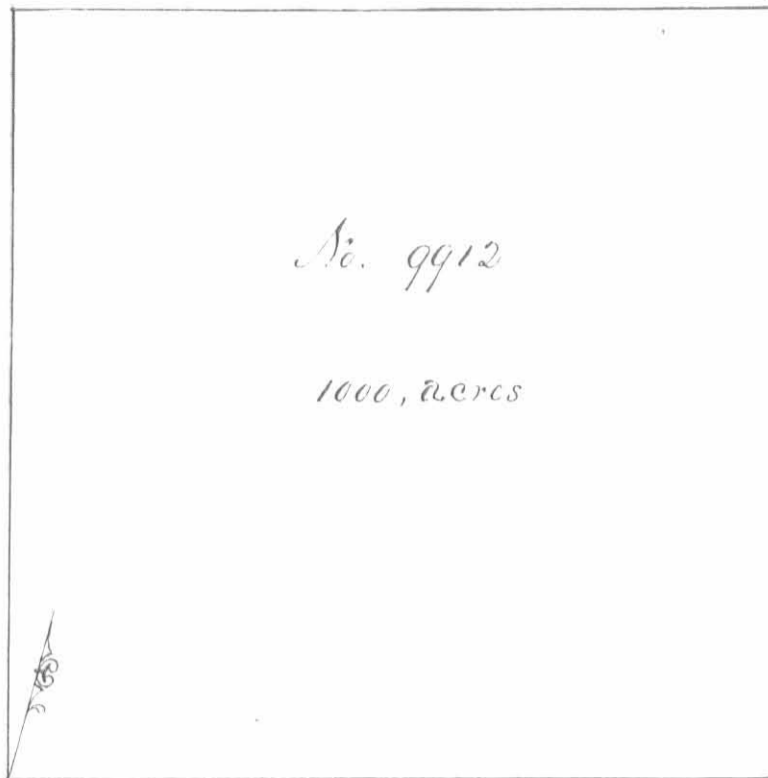
O. J. Hendrick D. S.  
June 11<sup>th</sup> 1831  
February 1<sup>st</sup> 1834

Surveyed for John Griffith Agent of Charles Barker 100 acres of land on a Military Warrant No 2968 on the waters of Meade creek; beginning at two Sugar trees Northeast corner to Charles Porterfield's survey No. 9888 & northwest corner to Lewis Taliaferro's & others survey No. 9889; thence with the line of survey No. 9889, N. 78 E. 100 poles crossing a branch at 20 poles to three beeches & two sugar trees on a road; thence N. 12° W 160 poles to a sugar tree, beech, small ironwood and hickory; thence S. 78° W. 100 poles crossing the road at 30 to a sugar tree and beech in the line of No. 9910 thence with said line S. 12, E. 160 poles crossing a branch at 111 poles to the beginning.



James Watkins  
Daria Hunt S. C. C.  
Jacob Rosbrook, M. R.

Cadwallader Wallace D. S.  
April 13<sup>th</sup> 1830  
April 21<sup>st</sup> 1830



No. 9912

1000, acres

Surveyed for Nicholas Taliaferro  
1000 acres of land on part of  
a Military Warrant No. 854  
on the waters of Bokes Creek  
Beginning at a Sugar tree and  
two beeches South east corner of  
John Swann and other survey  
No. 9911; thence N. 75 E 400 poles  
to three beeches North east corner  
of Luke Cannon and other sur-  
vey No. 9890; thence N. 12 W. 400  
poles to a buckeye, bar oak, ash  
and horn beam on the bank of

Bokes Creek, North west corner of John Swann and other survey No  
9913; thence S. 78 W. 400 poles crossing a branch at 131 poles to  
three beeches; thence S. 12 E 400 poles to the beginning.

Walter Jones

Peter Titus

Jacob Fustermaker M.k.r.

O. F. Hendrick D.S.

October 2<sup>nd</sup> 1830October 29<sup>th</sup> 1830

Surveyed for Thomas Perkins and Littlebury Al-  
dridge 100 acres of land on part of two Mil- No. 9371  
itary Warrants, Perkins 50 acres on No. 6205 and 100 acres  
Aldridge 50 acres on No. 6206 on the waters of Mad  
river and mile creek; Beginning at two poplars and  
a hickory westerly corner to the representatives of Sewelling  
Jones survey No. 4655 running S 52 W. 180 poles to three ashes  
and a buckeye in the line of Thomas Threatts survey No. 4661  
thence with said Threatts line and course thereof S. 75 E. 204  
poles passing his North easterly corner to three beeches in the  
line of William Aguns survey No. 4682; thence with said  
line N. 25 E. 39 poles to two beeches and a poplar corner to  
his survey; thence N 52 E poles to a sugar tree, red oak and  
poplar, corner to said Aguns survey in the line of said Jones  
survey; thence with his line N. 38 W. 150 poles crossing a branch  
to the beginning.

Edmund Mearns

David Mearns &amp; C

William Townsley M.k.r.

James Gallaway Jun D.S.

November 7<sup>th</sup> 1817May 22<sup>nd</sup> 1818



Surveyed for Thomas Perkins, Littleberry Hedridge and Walter Dun 200 acres of land on part of three Military Warrants; Perkins 50 acres on No 6205, Hedridge 50 acres on No 6206 and Dun 100 acres on No 6220 on the waters of Head river and Mill creek. Beginning at three blue ashes and a hickory in the line of Thomas Theate survey No. 4661 southerly comes to Walter Dun's survey No 10426; 10427; 10441 thence N. 52, E. 234 poles passing the southerly corner of said Perkins survey No 6370 at 38 poles crossing a branch at 48 poles to a hickory and two poplars easterly comes to said survey and westerly comes to the representatives of Newling Jones survey No 4650; thence with Jones line S. 38 E 194 poles crossing Otter Creek at 13 poles to a sugar tree red oak and poplar in said line most northerly comes to William Agans survey No 4682; thence with Agans line S 52 W. 8 poles to two beeches and a poplar comes to said survey; thence with another of his lines S. 25 W. 66 poles to three in said line; thence N. 75 W. 280 poles passing the Northeastly corner of Isaac's said survey and with his line crossing a branch to the beginning.

John Lingout  
John Marmont  
Aaron Hunt

Walter Dun D.S.  
January 23<sup>rd</sup> 1823  
May 28<sup>th</sup> 1823

Surveyed for the Representatives of Rowland Madison 400 acres of land on part of a military warrant No. 5789 on the waters of Rush Creek. Beginning at a buckeye, two oak ash and hornbeam Southeast comes to Moorrows and Taylor's survey No. 9937 and North east comes to Nicholas Taliaferro's survey No. 9912; thence with the north line of survey No 9913 N. 79 E. 160 poles to a stake, thence N. 12 W. 400 poles to a stake, thence S. 78 W. 160 poles crossing the out let of a large Beaver Dam at 60 poles to a buckeye, lyme and two iron woods North east comes to Moorrows and Taylor's said survey; thence with their line S. 12 E 400 poles to the beginning.

Levi D. Sharp  
Hilkiah Rosebrag  
Wilson S. Thompson

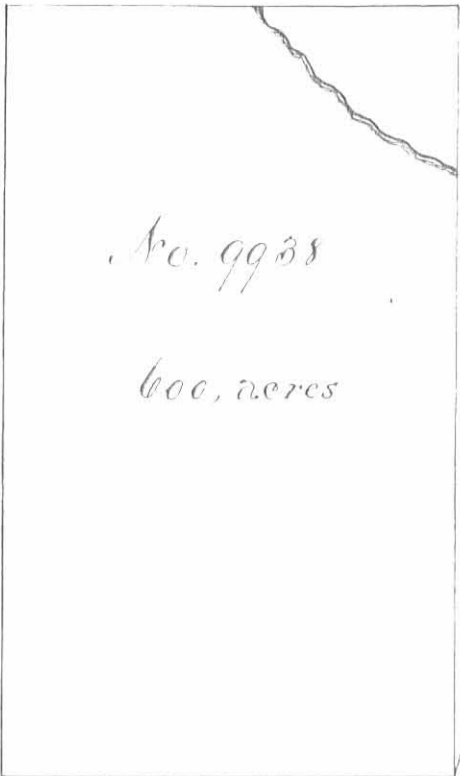
Samuel Forrer D.S.  
January 21<sup>st</sup> 1820  
December 7<sup>th</sup> 1820

No. 9371912174

200 acres

No. 9938

400 acres



Surveyed for the representatives of Rowland Madison 600 acres of land on part of a Military warrant No. 5789 on Rush Creek. Beginning at a buckeye and two ashes on the west side of a small pond northeast corner to Flood and others survey No. 9913 and north west corner to James Taylor's Survey No. 9914; thence N. 12 W. 400 poles crossing Rush creek at 298 poles to a sugar tree and two beeches thence S. 78 W. 240 poles crossing the creek at 111 poles to a stake northeast corner to said Madisons survey No. 9938 for 400 acres; thence with his line S. 12 E. 400 poles to a stake in a line of said survey No. 9913; thence with said line N. 78 E. 240 poles to the beginning.

Levi D. Sharp  
 Melkiah Rosebraugh  
 Nelson & Thompson M. E.

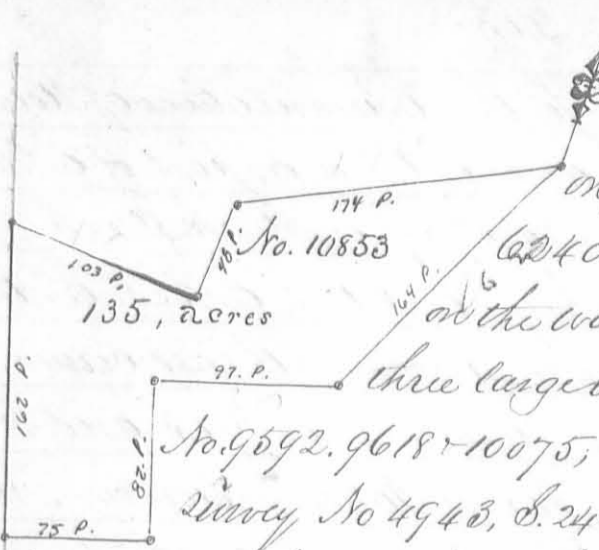
Samuel Forrester O. S.  
 January 21<sup>st</sup> 1820  
 December 7<sup>th</sup> 1820

Surveyed for James Taylor 983 acres of land on part of a Military warrant No. 5440 on the waters of Rush Creek and Pokes Creek; beginning at an ash, cherry tree and box elder southeast corner to Swan and others survey No. 9913 and Northwest corner to James Taylor's survey No. 9892; thence with a line of said survey N. 78 E. 400 poles crossing Pokes Creek to a beech and two sugar trees northeast corner to said survey No. 9892; thence N. 12 W. 383 poles to a sugar tree and two beeches; thence S. 78 W. 400 poles crossing a branch of Rush creek at 200 and one at 300 poles to a buckeye and two ashes on the west bank of a small pond northeast corner to survey No. 9913; thence S. 12 E. 383 poles crossing Pokes Creek at 200 poles to the beginning.



Levi D. Sharp  
 Melkiah Rosebraugh  
 Nelson & Thompson M. E.

Samuel Forrester O. S.  
 January 18<sup>th</sup> 1820  
 March 9<sup>th</sup> 1820

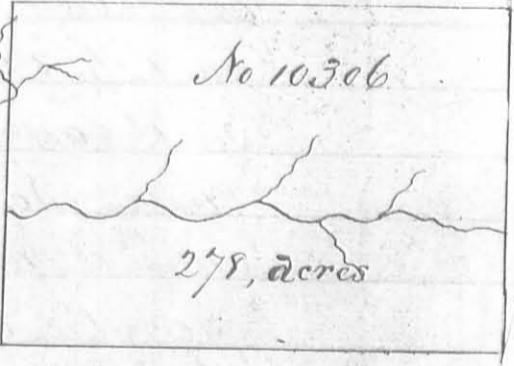


Surveyed for Walter Dun 135 acres of land on part of three Military Warrants; 50 acres on No. 6240, 14 acres on No. 6241 and 71 acres on No. 6098 on the waters of Mad River; Beginning at a stake and three large white oaks westerly corner to said Dun's survey No. 9592, 9618 & 10075; thence with the line of Anthony Singleton's survey No. 4943, S. 24 N. 164 poles crossing a large branch at 162 poles to a stake, two small live oak and a black oak westerly corner to Singleton's said survey in the line of Samuel Finley's survey No. 4493 and 4525; thence with said line S. 70 N. 97 poles to two hickories and a white oak corner to Finley's said survey; thence another of his lines S. 20 E. 82 poles to a white oak and black oak corner to said survey; thence with another of his lines S. 70 N. 75 poles to a stake in said line easterly corner to said Dun's survey No. 9793; thence with Dun's line N. 20 W. 162 poles to a black oak Dun's northeasterly corner in the south line of Thomas M. Bayly's survey No. 5864; thence with said line East 103 poles to three black oaks southeasterly corner to said survey; thence with another of his lines North 48 poles to three white oaks in said line southerly corner to said Dun's survey No. 8303 and 8485; thence with the line of said survey N. 60 E. 174 poles crossing the branch at 57 poles to the beginning.

Nathaniel Pope  
Richard Shockley  
Aaron S. Hunt M.R.

Walter Dun D.S.  
November 19<sup>th</sup> 1821  
January 29<sup>th</sup> 1822

Surveyed for Abraham J. Williams 278 acres of land on part of a Military Warrant No. 5749 on Cherokee-man's run a branch of the big No. 10306 Miami; Beginning at two red oaks and a large white oak southwest corner to Mark Hardins survey No. 9883 in the Greenville Treaty line; thence with said line S. 78 N. 256 poles to three white oaks in a swamp, thence N. 12 W. 174 poles crossing the spring fork at 64 poles, crossing a spring and bend of the middle fork at 134 poles and the fork at 164 poles to a large live oak and buckeye; thence N. 78 E. 256 poles crossing the middle fork at 3 poles to a white oak and two sugar trees in Hardins line; thence with said line S. 12 E. 174 poles crossing a drain at 110 poles to the beginning.

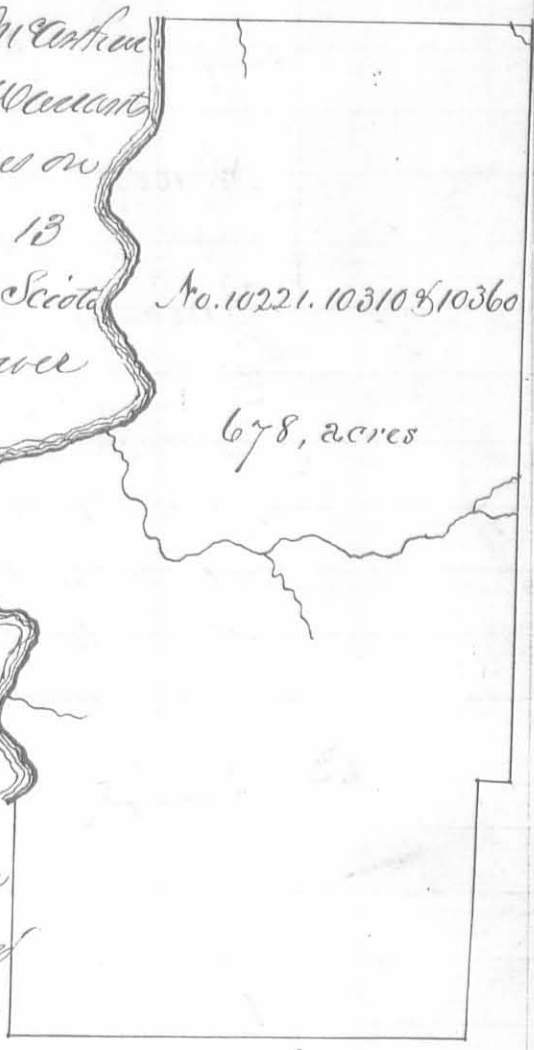


George Henry  
James Henry  
Noah Devalt M.R.

Thomas J. McArthur D.S.  
January 9<sup>th</sup> 1821  
March 26<sup>th</sup> 1821

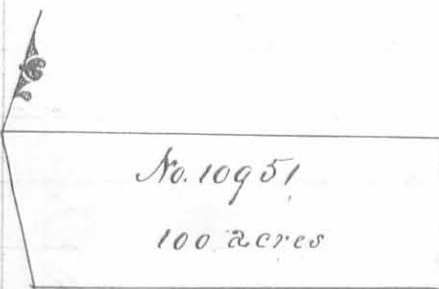


Surveyed for Robert Means and Duncan McArthur  
 open 678 acres of land on part of five Military Warrants  
 Means 600 acres; 400 acres on No 5367, 200 acres on  
 No 5231 and McArthur 78 acres on No. 5070. 13  
 acres on No 5551 and five acres on No 5104 on Scioto  
 river: Beginning at a large honey locust lower  
 corner on the river of said Means entry No.  
 10019 made the 20<sup>th</sup> March 1820; thence  
 down the river with the meanders thereof  
 and binding thereon N. 50 W 34. N 13 E 50  
 N. 47 W 18. S. 70 W. 10. N 44 W. 24. N 20 W. 34. N 17  
 E 28. N. 60 E. 66. N. 28. E. 26. N 40 W. 52. N 18 E. 32  
 N. 45 W. 30. N. 10 E. 22. N. 34 E. 24. N. 11. W. 54  
 N. 8 E. 6 poles to a stake in a prairie; thence  
 N. 78 E. 190 poles crossing a branch at 42 and  
 one at 181 poles to three beeches two of them  
 down, thence S. 12 E 392 poles crossing a small branch at 12 one  
 at 226 and a large branch at 250 poles to a red oak sugar tree  
 black walnut and small blue ash; thence S. 78 W. 17 poles to a  
 stake; thence S. 12. E. 134 poles to a stake in the north line of the  
 representatives of John Green's entry No. 10010; thence with said  
 line S. 78 W. 240 poles to a lynn and beech at the Northwest cor-  
 ner of said entry; thence N. 12 W 125 poles to a forked honey lo-  
 cust on the bank of the river; thence N. 23 E. 13 poles crossing  
 a bend of the river to the beginning.



David Colvin  
 James Henry  
 Peter McArthur

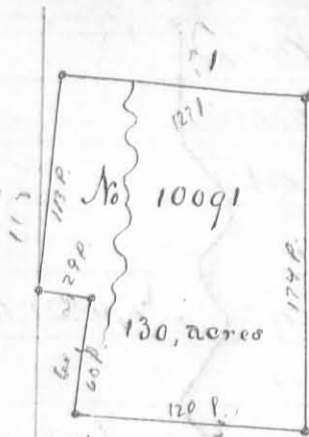
Thomas J. McArthur D.S.  
 January 26<sup>th</sup> 1821  
 March 29. 1821



Surveyed for Walter Dun of 100 acres of land on a  
 Military Warrant No. 6482 on the waters of Big Miami  
 beginning at two hickories and a large white  
 in Robert line Southwestly corner to the said Dun  
 survey No. 9925. 9946 & 10121; thence with said line S. 24. 30' E. 80 poles  
 to two red oaks, a small bur oak and small hickory in said line  
 thence N. 78. E. 211 poles to a bur oak, hickory, ash and small  
 red elm; thence N. 13, W. 78 poles to a hickory, red oak and cherry  
 tree southeast corner to said Dun's said survey; thence with his line  
 S. 78 W. 227 poles to the beginning.

William Stayfield  
 Samuel Trigo  
 Joel Smith

Thomas J. McArthur D.S.  
 October 25<sup>th</sup> 1822  
 February 25<sup>th</sup> 1823



Surveyed for Cadwallader Wallace of 130 acres of land on part of a Military Warrant No. 5872 on the waters of Mead River. Beginning at three hickories Southeastly corner to Walter Dun's survey No. 9878 in the line of Holland Hanceys survey No. 3224; thence with Hanceys line S. 24. E. 174 poles to two white oaks in said line corner to James Gallaway's survey No. 6487; thence with his line S. 70 W. 120 poles to two white oaks Northeastly corner to Gallaway's said survey in the line of Thomas Northington's survey No. 4479; thence with his line N. 20. W. 60 poles crossing a branch to two white oaks an Elm and hickory, north easterly corner to Northington's said survey thence with his line S. 70 W. 29 poles to a stake; thence N. 21 W 113 poles to a black oak south westerly corner to Dun's said survey; thence with his line N. 69 E. 127 poles crossing the branch to the beginning.

Henry A. Hance

Israel Hance

Matthew Bonner M.R.

Walter Dun D.S.

January 15. 1820

March 14. 1820

Surveyed for Joseph and Benjamin W. Ladd and Thomas Hance of 88 acres of land on part of a Military Warrant No. 5870 on the waters of Stony creek. Beginning at a black walnut and two dogwoods South east corner to Alexander S. Dandridge survey No. 4478; thence with his line North 160 poles crossing a branch at 78 poles to a sugar tree and elm in the line of said survey; thence S. 80 W. 119 poles crossing a branch to a stake in Ludlow's line; thence with said line S. 20 E 148 poles to two black oaks corner to Cadwallader Wallace survey No. 9478; thence East with his line 69 poles to the beginning.



Martin Dewitt

Jacob Foster

Matthew Bonner M.R.

Walter Dun D.S.

February 1<sup>st</sup> 1820

March 14<sup>th</sup> 1820



Surveyed for Walter Dun and William Bayles of  $1094\frac{2}{3}$  acres of land on part of nine Meridian warrants; Dun 827 acres, 200 acres on No. 5570, 124 acres on No. 6218, 90 acres on No. 6202, 130 acres on No. 6217, 19 acres on No. 6124, 81 acres on No. 6126, 50 acres on No. 6147, 110 acres on No. 5749 and Bayles  $26\frac{2}{3}$  acres on No. 3167 on the waters of Big Miami; beginning at three white oaks, marked as the southeast corner of the Shawnee Reserve at Seneca

No. 10122, 10248, and 10249

$1094\frac{2}{3}$  acres

where Robert's line crosses the Greenville Treaty line; thence with said line N. 78. E. 400 poles crossing a small branch at 146 poles to two red oaks and two white oaks; thence N. 12 W. 400 poles crossing a prairie from 240 to 370 poles a branch in the prairie at 350 poles to a bur oak and small elm; thence S. 78. W. 488 poles to two white oaks and a hickory in Robert's line; thence with said line S. 24. E. 407 poles crossing two branches to the beginning.

George Henry  $\frac{2}{3}$

James Henry  $\frac{3}{3}$  C.C.

Benjamin McCulloch M.K.R.

Thomas S. McArthur D.S.

January 8<sup>th</sup> 1821

March 27<sup>th</sup> 1821

Surveyed for David Stephenson 166 acres of land on part of a Meridian warrant No. 347 on the waters of Big Miami;

beginning at an ash in a swamp southwest corner to Nathan Reeves survey No. 9927 in the line of the representatives of Michael Rudolph's survey No. 9924

thence with their line S. 78 W. 194 poles to two ashes and two hickories north west corner to their said survey; and south east corner to Isaac Gardner's survey No. 12052; thence N. 78 W. 89 poles to a bur oak, hickory, ash and small red elm north east corner to Gardner's said survey thence N. 49 E. 219 poles to a small black walnut in the line of Reeves said survey; thence with said line S. 12 E. 190 poles to the beginning.

George Henry  $\frac{2}{3}$

James Henry  $\frac{3}{3}$  C.C.

Joel Smith M.K.R.

Thos S. McArthur D.S.

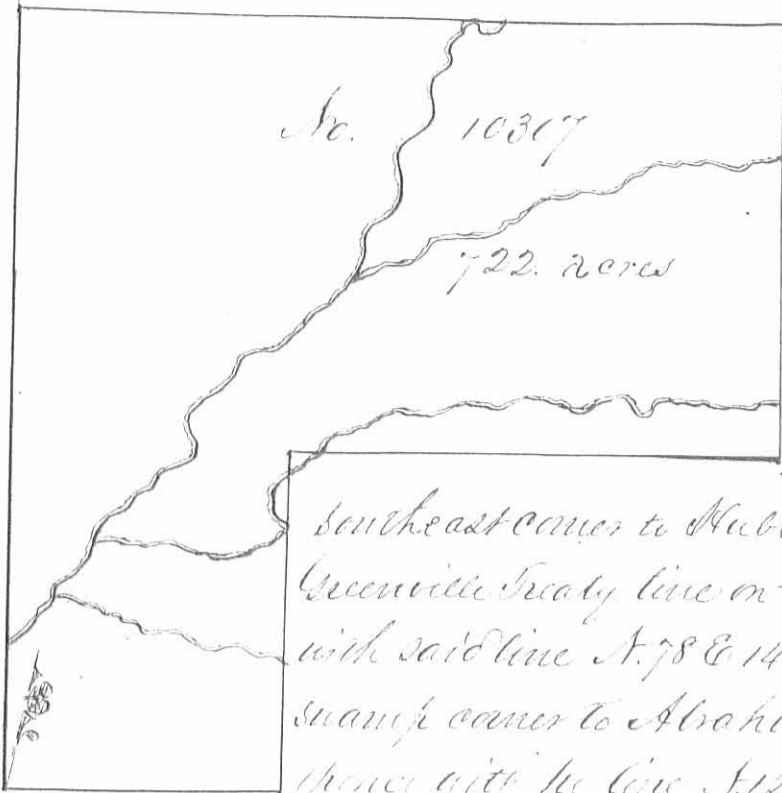
December 25<sup>th</sup> 1822

July 7<sup>th</sup> 1823

No. 10434

166, acres





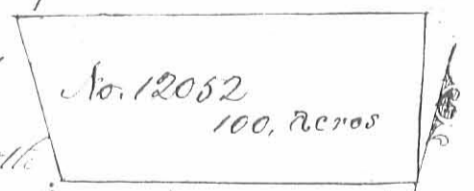
Surveyed for Duncan McArthur  
and Joseph Hill 722 acres of  
land on part of three Military War-  
rants, McArthur 558 acres, Hill 65  
acres on No 5358, 163 acres on No 5557  
and Hill 164 acres in No. 5805 on  
Cherokee mans run: Beginning at

two white oaks and a black oak  
southeast corner to Hubbard Myatts survey No. 9881 in the  
Greenville Treaty line on the west side of Mills road, thence  
with said line N. 78 E 144 poles to three white oaks in a  
swamp corner to Abraham Williams survey No. 10306  
thence with his line N. 12 W 174 poles crossing the Spring  
fork at 61, a spring and bend of the middle fork of Cherokee mans run at  
34 and at 164 poles to a large tree oak and buckeye northwest corner to  
Williams said survey, thence with another line thereof N. 78 E 256 poles  
crossing the said fork at 5 poles to a white oak and two sugar trees north  
east corner to said survey in the line of Clark Hardins survey No. 9983  
thence with said line N. 12 W. 226 poles crossing the fork at 30 and a  
branch at 158 poles to pine beeches, thence S. 75 W. 400 poles crossing the  
North fork of Cherokee mans run at 156 at 162 and at 170 poles crossing  
Mills road at 276 poles to three hickories northeast corner to Myatts  
said survey, thence with his line S. 12 E 400 poles crossing a small branch  
branch at 68 and Cherokee mans run at 326 poles to the beginning.

George Henry 3  
James Henry 3 66  
Noah Devalt Mkr

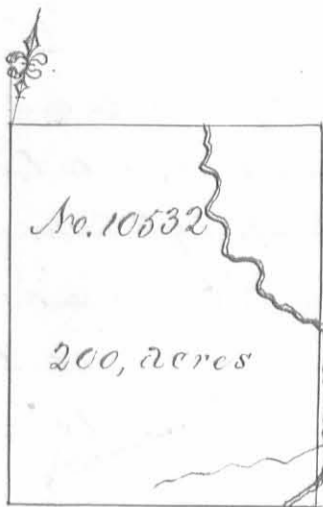
Thomas J. McArthur D.S.  
January 9<sup>th</sup> 1821  
March 29<sup>th</sup> 1821

Surveyed for Isaac Gardner 100 acres of land on  
part of a Military Warant No. 6476 on the waters of the  
big Miami; beginning at two ashes and two hickories north  
west corner to the representatives of Michael Rudolphs survey No. 9902,  
thence N. 7 W. 85 poles to a live oak, hickory small ash and small red  
elm southeast corner to Walter Sun's survey No. 10951 thence with his line  
S. 78 W. 211 poles to two red oaks a small live oak and a small hickory  
in Roberts line south west corner to Lewis said survey; thence with Roberts  
line S. 24 30' E. 88 poles to a white oak and ash in said line; thence N. 78 E  
181 poles to the beginning.



Samuel Trigo 3  
William Stanfield 3 C.C.  
Jacob Smith Mkr.

Thomas J. McArthur D.S.  
December 16<sup>th</sup> 1822  
February 21<sup>st</sup> 1823

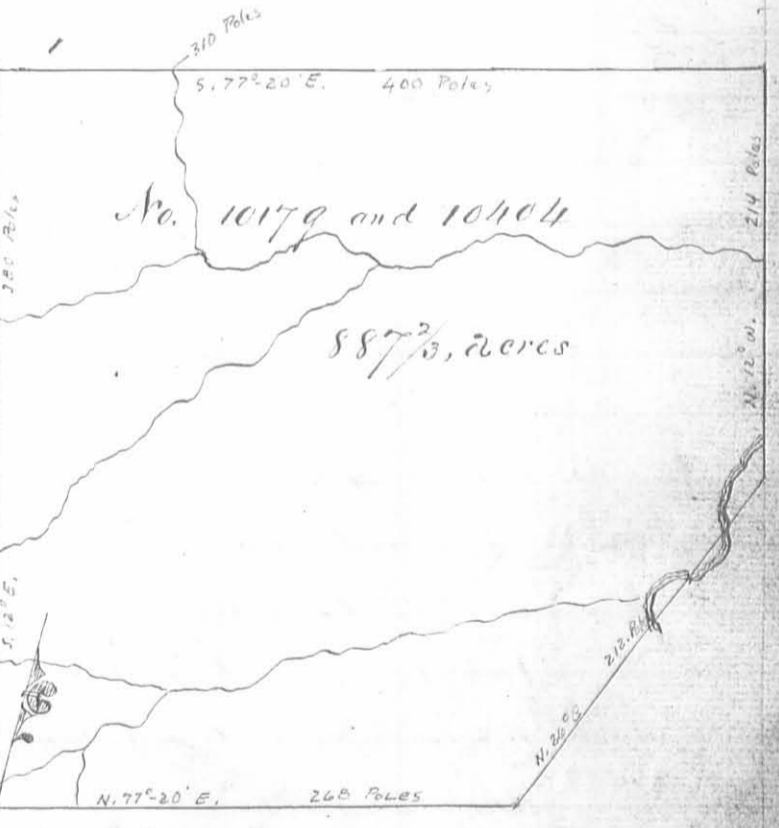


Surveyed for John Slaughter and John Jones 200 acres of land on two military warrants; Slaughter 100 acres on No 8305 and Jones 100 acres on No 5353 on the south fork of Mea cat, beginning at an ash and two lymus a southerly corner to Philip Stewart survey No 9957; thence with his line N. 78 E 160 poles crossing a drain at 3 and the fork at 98 poles to three beeches in said line; thence S 12 E 200 poles crossing the fork at 118 a small branch at 174 and the fork at 188 poles to a forked white oak and two hickories saplings; thence S. 78. W 160 poles crossing the fork at 14 poles to a red oak and lymus; thence N. 12. W 200 poles passing a southerly corner of Stewart said survey at 75 poles and with his line to the beginning.

Hiram Perkins  
 Theodore McDowell S. C. C.  
 Hango Chapman Mkr.

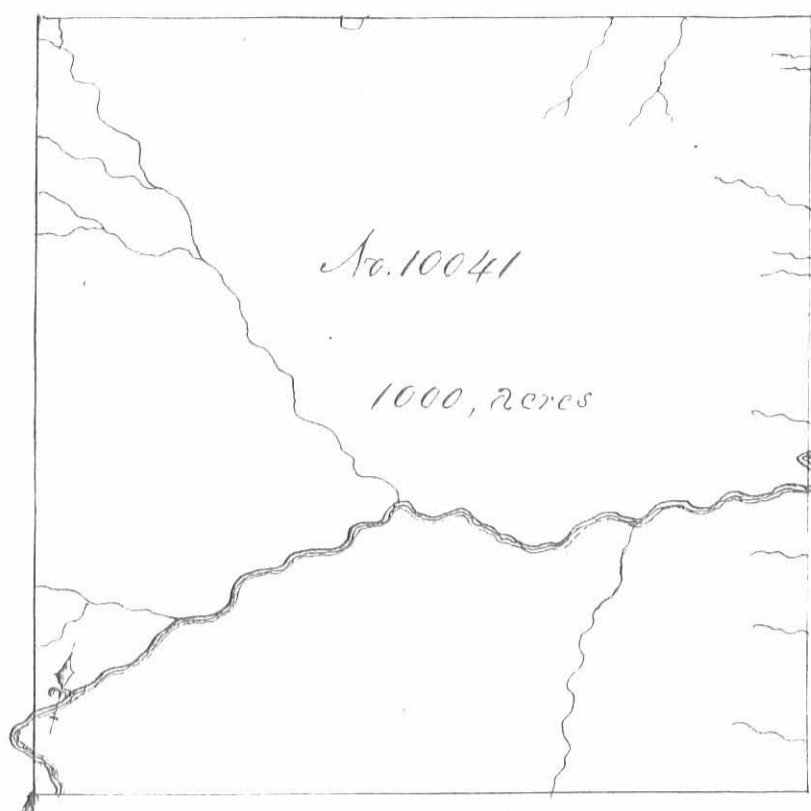
Samuel Forrer D. S.  
 June 8<sup>th</sup> 1822  
 July 26<sup>th</sup> 1822

Surveyed for Duncan McArthur, Robert Means Sr, Joseph Hite, Abraham Bowman George Nandy and George Ryan 887 2/3 acres of land on part of nine military warrants McArthur 290 acres, 260 on No 5811, 30 acres on No. 1451; Means 297 2/3 acres, 267 2/3 acres on No. 5344, 75 acres on No 5769, 15 acres on No 5470; Hite 106 acres on No 5809; Bowman 96 acres on No 5867; Nandy 68 acres on No 5336 and Ryan 30 acres on No. 6071 on Rush Creek; beginning at two sugar tree and a large white elm, southeasterly corner to Walter Duns survey No. 9885 in the Greenville Treaty line; thence with said line N. 77. 20. E. 268 poles crossing a forked spring and several small branches to two elms east of Duntherland's fence; thence N. 26. E. 212 poles crossing Rush creek three times to a stake in the west line of Jamison and other survey No. 9887; thence N. 12. W 214 poles crossing the creek and a large branch to a blue ash beech and sugar tree thence S. 77. 20. W. 400 poles crossing a drain at 310 poles to three bar oaks and a beech on the north side of a swamp; thence S. 12. E. 380 poles crossing a branch at 130 one at 310 and a drain at 365 poles to the beginning



George McCulloch  
 George Henry S. C. C.  
 Samuel Hager Mkr.

Thomas S. McArthur D. S.  
 January 1<sup>st</sup> 1821  
 March 28<sup>th</sup> 1821



Surveyed for Richard Steunon  
1000 acres of land on two Military  
warrants No. 4962 and 4963 on  
Rush Creek; beginning at a small  
buckeye, small sugar tree and white  
walnut on the east bank of the creek  
south east corner to the represent a-  
tions of Cand Wallace and others  
entry No. 9934, thence N. 12 E 400  
poles crossing the creek at 30 and  
at 34 poles and several more branches  
to three beeches; thence S. 78. E 400  
poles crossing a small branch at

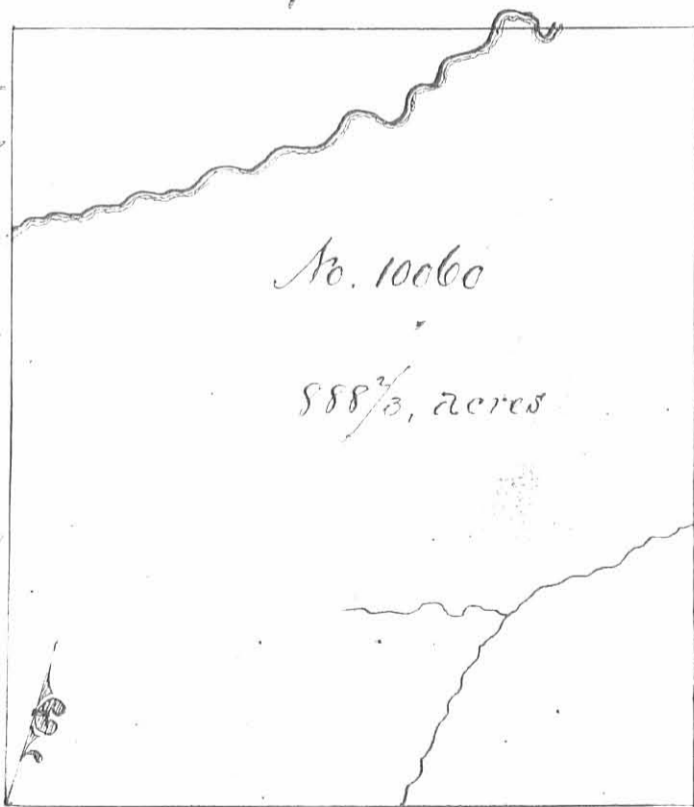
30 and at 300 and the Sandusky road at 372 poles to three beeches; thence  
S. 12 E. 400 poles crossing several drains and Rush Creek from 230 to  
250 poles and a branch at 378 poles to three beeches; thence S. 78. W  
400 poles crossing a branch at 104 poles the road at 290, the creek  
at 204 poles to the beginning.

George M. Colbeck 3  
George Henry 3 C.C.  
Simon Hager M.k.r.

Thomas M. Arthur D.S.  
January 25<sup>th</sup> 1821  
March 28<sup>th</sup> 1821

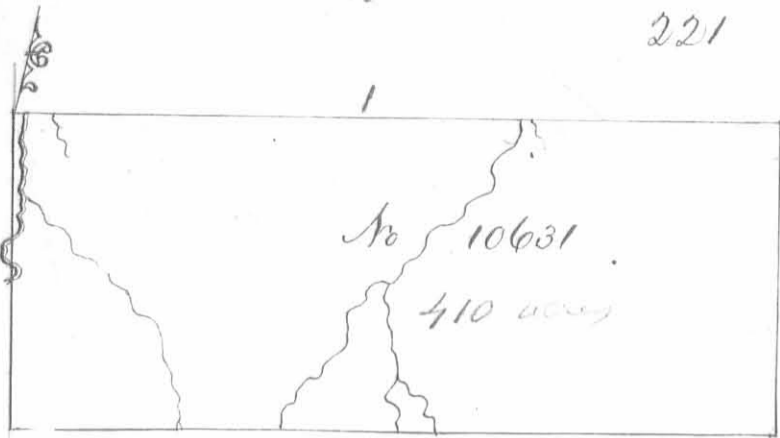
Surveyed for James Taylor Esq<sup>r</sup> and  
William S. Pierce 888 $\frac{2}{3}$  acres on the follow-  
ing Military Warrants; Taylor 533 $\frac{1}{3}$  acres  
on No. 5465 and Pierce 555 $\frac{1}{3}$  acres on No.  
5888 on Rush Creek; Beginning at a  
buckeye and two ashes on the side of  
a pond north west corner to James  
Taylor's survey No. 9914; thence with  
said line N. 78 E 556 poles crossing a  
branch at 200 poles to a hickory and  
two beeches; thence N. 12 W 400 poles  
crossing said branch at 140 poles to an  
ash and two hickories in the line of  
Alexander Parkers survey No. 9958, thence with said line S. 78 W. 300 poles cross-  
ing the creek at 70, at 88 and at 90 poles to a sugar tree and two beeches north east corner to Row-  
land Macarons survey No. 9938, thence with said line S. 12 E 400 poles crossing the creek  
at 102 poles to the beginning.

Levi D. Sharp 3  
Nehemiah Corbin 3 C.C.  
Wilson S. Thompson M.k.r.



Saml. Fowler D.S.  
January 22, 1820  
July 24, 1820





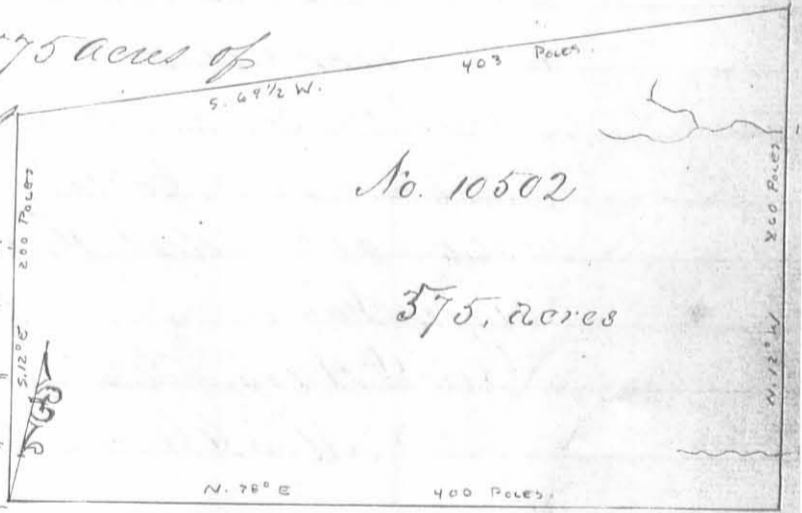
Surveyed for Duncan McArthur  
 approx 410 acres of land on part of  
 a Military Warrant No 3477  
 on the waters of Rush Creek: Begin-  
 ning at a small buckeye sugar  
 tree and walnut on the west

bank of the creek northeast corner to Bondleton and other survey  
 No 9909 and southwest corner to Richard Stennons survey No 10041  
 thence with Stennons line N. 78. E 400 poles crossing the creek at 6  
 a drain at 20 the Sandusky road at 110 a branch at 266 and a  
 drain at 270 poles to three beeches southeast corner to Stennons  
 said survey; thence S. 12. E. 164 poles to three beeches; thence S 78 W  
 400 poles crossing several drains and the road at 286 poles to two  
 sugar trees and a beech, thence N. 12 W 164 poles crossing the creek  
 three times the beginning.

George M Collock  
 George Henry B.C.C.  
 Edward Nicgus M.R.

Thomas M Arthur D.S.  
 June 7<sup>th</sup> 1821  
 July 20<sup>th</sup> 1821

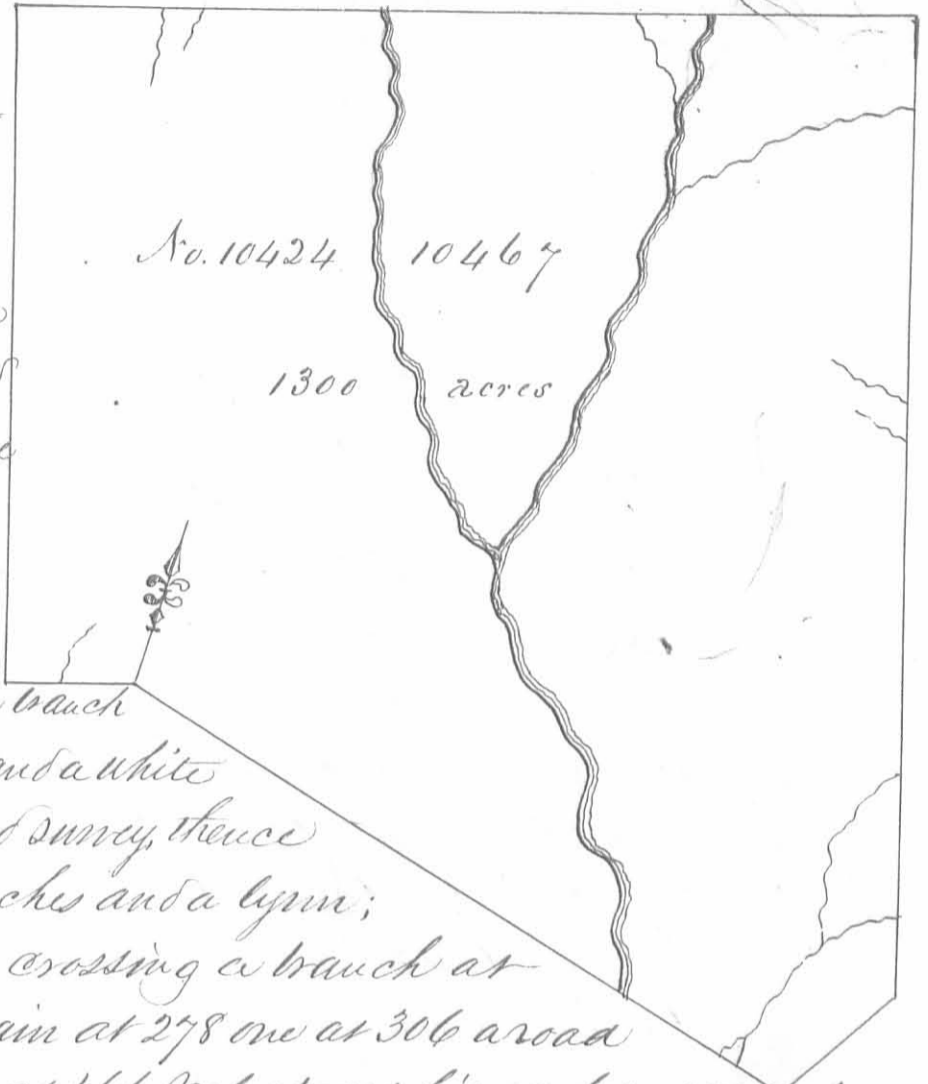
Surveyed for Chimera Parritt 575 acres of  
 land on part of a Military warrant  
 No 2257 on the waters of Big  
 Miami; beginning at a beech su-  
 gar tree and dogwood south east  
 corner of Ephraim Raephs sur-  
 vey No. 9990 and Northwest cor-  
 ner of Duncan McArthur's sur-  
 vey No. 9974; thence with his line N. 78. E 400 poles to an Elm ma-  
 ple and ash northeast corner to survey No 9974 and south-  
 west corner to survey No. 9991; thence with a line of said survey  
 N. 12 W. 260 poles crossing a drain at 25 and one at 196 poles  
 to a beech and sugar tree; thence S. 69 1/2 W 403 poles to an ash  
 sugar tree and beech in the line of said Raephs survey; thence  
 with his line S. 12. E 200 poles to the beginning.



Sam O Sharp  
 Alpheus Rosebrog B.C.C.  
 Wilson S Thompson M.R.

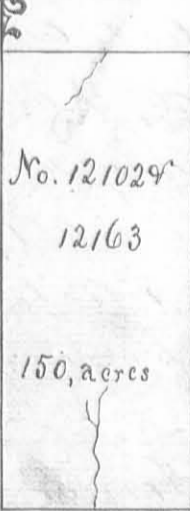
Samuel Forrer D.S.  
 December 5<sup>th</sup> 1820  
 December 12<sup>th</sup> 1820

Surveyed for John Evans  
 up<sup>er</sup> 1300 acres of land on  
 part of two Military War-  
 rants 1220 acres on No. 6418  
 and 80 acres on No. 6417 on  
 Mad River: Beginning at a  
 Stake Northwest corner to said  
 Evans Survey No. 10423, thence  
 with his upper line S. 75. E  
 400 poles crossing a road at  
 172 and Mad River at 304  
 a branch at 356 and a small branch  
 at 362 poles to two beeches and a white  
 ash, Northeast corner to said survey, thence  
 N. 31<sup>1</sup>/<sub>2</sub> E 77 poles to two beeches and a lynn;  
 thence N. 16. W. 510 poles crossing a branch at  
 12 one at 118 a deep drain at 278 one at 306 a road  
 at 390 and a small branch at 466 poles to a white ash red elm, small  
 blue ash and two small white walnuts; thence S. 74 N. 462 poles, cross-  
 ing a small branch at 92 and East fork of Mad River at 106 a drain  
 at 144, Mad River at 270 and a drain at 390 poles to two sugar trees  
 a beech and poplar, all small, on the side of a deep drain; thence S. 16  
 E. 355 poles to a poplar and white oak; thence N. 74 E. 65 poles, crossing  
 a drain at 27 poles to the beginning.



Simon Hager  
 Levi D. Sharp 3 C.C.  
 Abner Chapman M.H.R.

David Collins D.S.  
 November 17<sup>th</sup> 1820  
 January 17<sup>th</sup> 1821

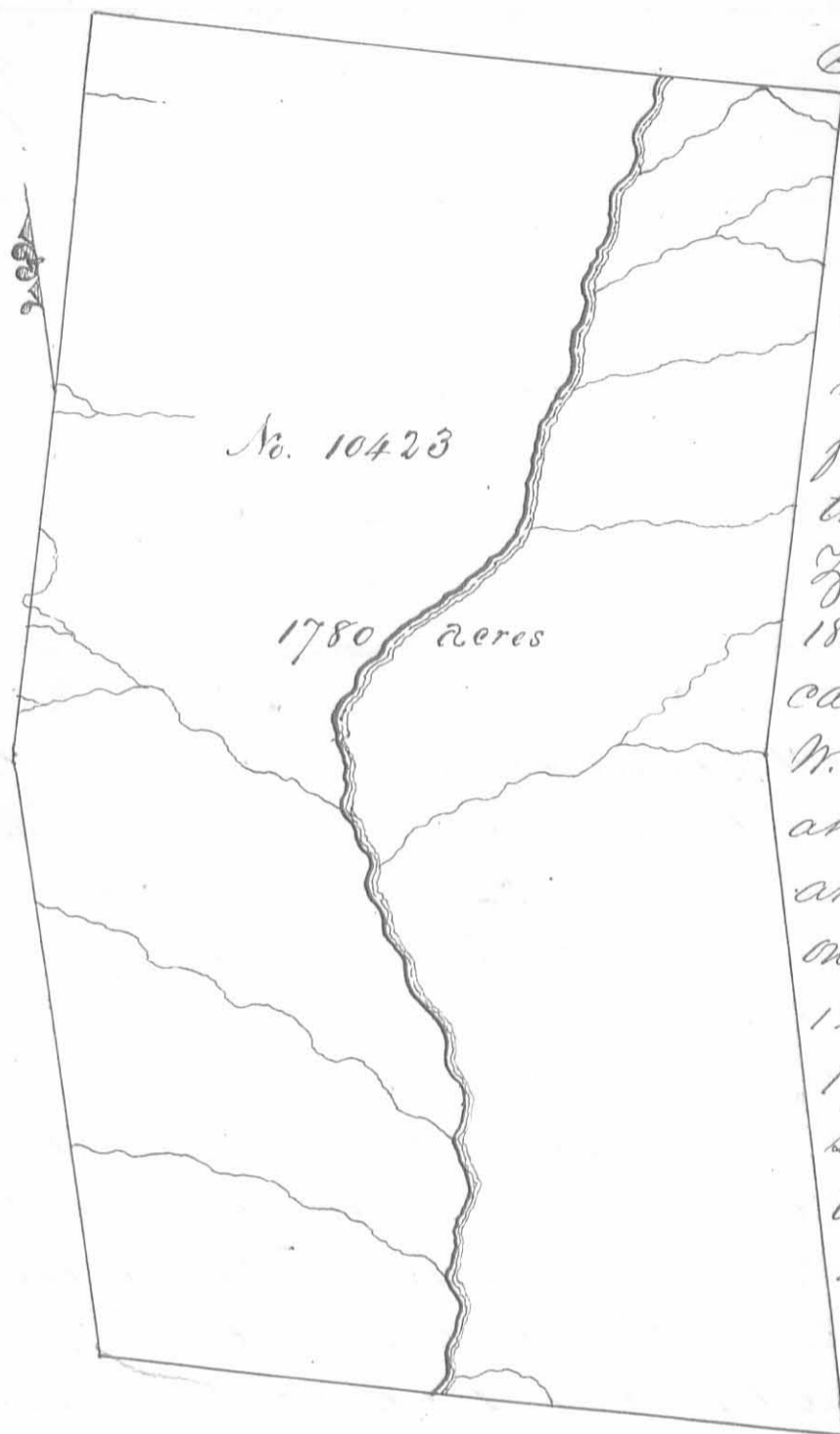


Surveyed for Duncan McArthur and John Evans up<sup>er</sup> 150 acres of land on part of  
 two Military Warrants, McArthur 83 acres on No. 629 and Evans 67 acres on No. 6526  
 on the waters of Cedar fork of Scioto Branch Creek; beginning at a dogwood and  
 elm southwest corner to S. M. Woodson and Robert and Samuel Woodson's survey  
 No. 7367 and Northeast corner to Robert Means survey No. 9157 thence with  
 the line of Woodson's said survey East 100 poles crossing a small branch  
 to two white oaks corner to George Handy and Bauman's survey No. 9158  
 thence South 240 poles to a stake corner to their said survey in the  
 line of Benjamin Hough's survey No. 8229. 8242 & 8797, thence with said line  
 West 100 poles crossing a small branch to a white oak southeast corner to Means said sur-  
 vey; thence with his line North 240 poles to the beginning.

David Newman  
 Jacob Cox 3 C.C.  
 John Key M.H.R.

Duncan McArthur D.S.  
 May 15<sup>th</sup> 1823  
 June 18<sup>th</sup> 1823





Surveyed for John Evans Apr  
1780 acres of land on part  
of a Military warrant No.  
6418 on Mad River: Begin-  
ning at two beeches and a  
hickory N. 75. W. 204 poles  
from the southwest corner of  
the house in which Isaac  
Zane dec<sup>d</sup> lived in the year  
1812 and until his death, now  
called Zanesfield; thence S. 12  
W. 200 poles crossing a branch  
at 8 and at 40, a large branch  
at 71 one at 96, ~~and~~ one at 102  
one at 106, one at 112, one at  
128, one at 164 and one at  
174 poles to three beeches, thence  
south 320 poles crossing a  
branch at 72 and one at  
204 poles to a small jack  
oak; thence S. 75. E. 400  
poles crossing a road at  
40. Mad River at 182 and

a drain at 240 poles to two small white oaks; thence N. 320 poles to  
a sugar tree and hickory marked about 1817; thence N. 15. E. 400  
poles crossing a branch at 48, a road at 104, a branch at 120  
a drain at 180, a road at 192, a branch at 276 a drain at 316  
one at 356 and a branch at 384 poles to two beeches and a white  
ash marked about 1817; thence S. 75 W. 400 poles, crossing a  
branch at 38 one at 44, Mad River at 96 and a road at 228  
poles to a stake on the side of a hill; thence S. 15. W. 200  
poles crossing a branch at 46 and 192 poles to the beginning

Simon Hoager

Levi D. Sharp E. C. C.

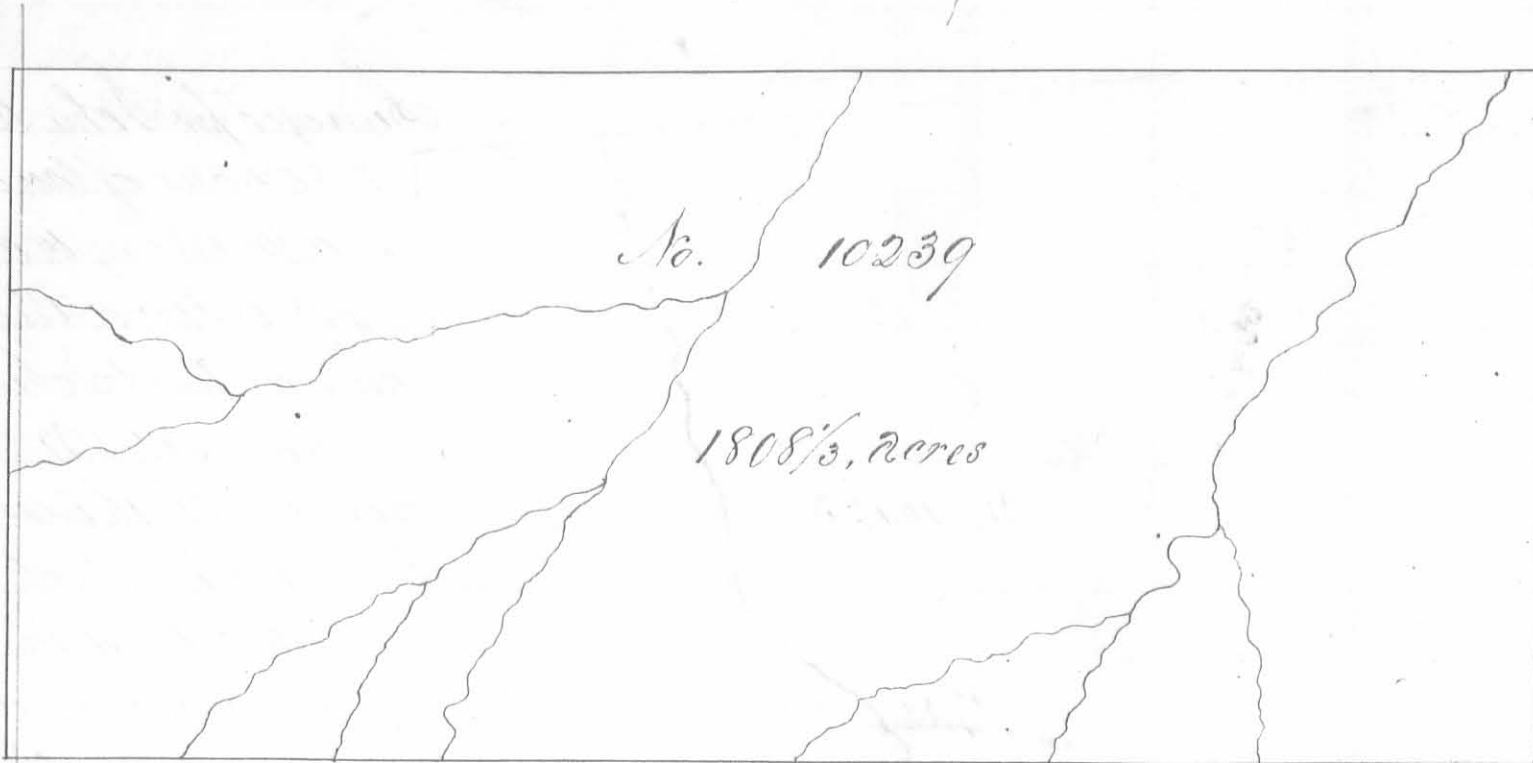
Abner Chapman M. K. R.

David Collins D. S.

October 17<sup>th</sup> 1820

January 7<sup>th</sup> 1820



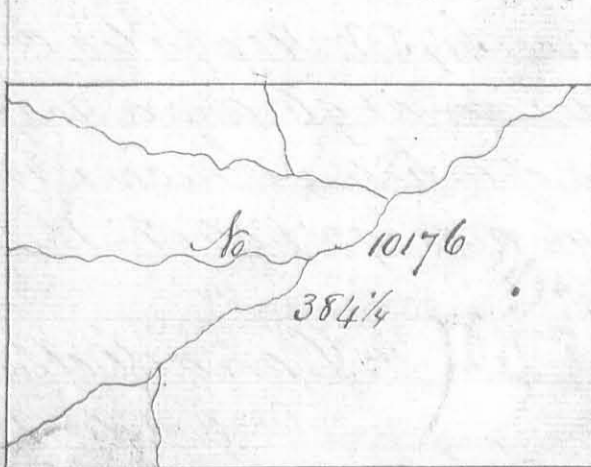


Surveyed for Nathaniel Sawyer of  $1808\frac{1}{3}$  acres of land on part of three Military Warrants, 1333 $\frac{1}{3}$  acres on No. 6285, 100 acres on No. 6277 and 375 acres on No. 6327 on the waters of Scioto; beginning at three red elms and two buckeyes Northwest corner to Robert Means survey No. 9959 and Northeast corner to Alexander Parker's survey No. 9958, thence N. 12. W. 363 poles to two sugar trees and an iron wood in the line of Maria Williams southwest survey No. 10176; thence S. 78. W. 800 poles crossing a large branch at 10 poles passing the corner of said survey at 260 crossing a large branch at 356 poles to a buckeye and two hickories; thence S 12 E. 363 poles crossing branches at 127 and at 221 poles to three beeches and an ash southeast corner to Robert Porterfield and others No. 9978; thence N. 78. E. 800 poles crossing branches at 94. 170. 227. 409. 543 and at 658 poles to the beginning.

Francis Thompson  $\frac{2}{3}$   
David McArthur  $\frac{3}{3}$

Matthew Baines M.k.r.

Thos J. McArthur D.S.  
November 16<sup>th</sup> 1821  
February 21<sup>st</sup> 1822

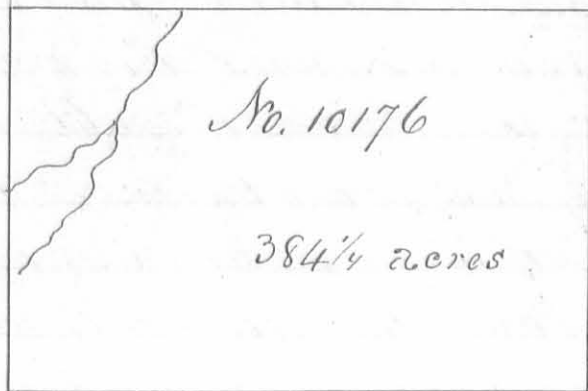


Surveyed for David Williams 384 $\frac{1}{4}$  acres of land on part of a Military Warrant No. 5748 on the waters of Scioto beginning at two lymns from one root and two red elms south east corner to Means and Harris survey No. 10004 and southwest corner to James Malins survey No. 10005, thence S. 78. W. 307 poles crossing a branch at 10 one at 169 and one at 268 poles to a beech and elm; thence S 12 E 200 poles crossing a branch at 8 and one at 88 poles to a beech and elm; thence N. 78 E. 307 poles crossing a branch at 88 poles to a beech and sugar tree, thence N. 12. W. 200 poles to the beginning.

David McArthur  $\frac{2}{3}$   
Francis Thompson  $\frac{3}{3}$  10.6  
Charles Furness M.k.r.

Thomas J. McArthur D.S.  
November 3<sup>rd</sup> 1821  
February 23<sup>rd</sup> 1822

Note. Most if not all of this survey is located in Hardin Co.



Surveyed for David Williams 384 1/4 acres of land on part of a Military warrant No. 5748 on the waters of Scioto; beginning at two black walnuts a white ash and sugar tree S. 12 E 400 poles from the southeast corner of Meaus and Harris survey No. 10004, thence S. 78 W 307 poles to a beech and hickory; thence N. 12 W. 200 poles crossing a branch at 58 one at 102 and one at 194 poles to a beech and elm; thence N. 78 E 307 poles crossing a branch at 11 and one at 88 poles to two sugar trees and a beech; thence S. 12 E. 200 poles to the beginning.

David McArthur  
Francis Thompson C.C.  
Charles Sumell M.K.V.

Thomas J. McArthur D.S.  
November 3<sup>rd</sup> 1821  
February 23<sup>rd</sup> 1822

Surveyed for John Evans 640 acres of land on part of a Military warrant No. 6477 in the waters of Darby creek and Mead river. Beginning at an ash, white oak hickory and sugar tree. South westerly corner Augustine J. Smith's survey No. 3230 and South easterly corner to said Smith's survey No. 3229; thence S. 21 E 320 poles crossing a branch at 98 and a spring branch at 210 poles to two dog woods and



a white oak in the line of survey No. 3684 made for James Caldwells representatives; thence with said line N. 69 E 320 poles crossing a drain at 240 and one at 292 poles to two hickories with easterly corner to said survey No. 3684, thence N. 21 W. 320 poles crossing a swamp at from 20 to 40 poles, a branch at 148 poles and a drain at 300 poles to an ash, two sugar trees and two mulberries (the mulberry dead) at the south easterly corner of said Smith's survey No. 3230, thence with said line S. 69 W. 320 poles crossing a drain at 56 a small branch at 127 one at 152 and a spring branch at 235 poles to the beginning.

Ross Thomas  
John Hill C.C.  
John Thomas M.K.V.

Duncan McArthur D.S.  
November 17<sup>th</sup> 1821  
March 7<sup>th</sup> 1822