

Surveyed for Walter Dun Apr^e 140 acres of land as part of the Military warrants; 74 acres on No. 6124, 56 acres on No 5749 and ten acres on No 5885 on the waters of Head River and Mill Creek.

Beginning at a sugar tree beech and cherry tree north easterly corner to Samuel Davies survey No. 3216, thence N. 15. E. 16 poles crossing a branch to two beeches and a sugar tree north westerly corner to Thomas Threatts survey No. 4661; thence with his line S. 75 E. 193 poles crossing a road from 165 to 183 poles to three blue ashes and a buckeye in said line westerly corner to Perkins and Aldridges survey No. 9371, thence with their line N. 52 E. 39 poles to a black walnut beech and hockberry in said line southerly corner to Thomas Perkins survey No. 9370, thence with said line N. 38 W. 126 poles crossing a drain at 6, the pond from 22 to 72 poles and a steep hollow at 118 poles to an ash and beech westerly corner to said Perkins said survey; thence S. 81. W. 129 poles crossing several drains to two beeches and a sassafras and a red oak thence S. 15. W. 12 poles to two beeches and a sugar tree; thence N. 75 W. 150 poles crossing a branch at 12 and one at 136 poles to two beeches thence S. 15. W. 54 poles to a beech in the line of Davies said survey, thence with said line S. 75 E. 150 poles crossing a branch at 8 and a drain at 130 poles to the beginning.

James Mearmont
Robert Mearmont C. C.
Aaron Brown M. k. r.

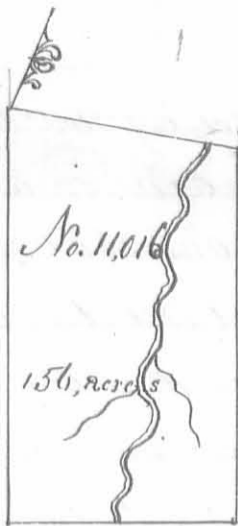
Walter Dun, D. S.
August 28th 1822
August 30th 1822

Surveyed for William Scott Apr^e 100 acres of land on a Military warrant No. 6341 on Cash Creek a branch of Scotts beginning at a stake south east corner to Robert Green's survey No. 10945 in the line of James Benwick's entry No. 9918 thence N. 78 E. 122 poles to two buckeyes a sugar tree and beech, thence N. 12 W. 133 poles crossing the creek at 43 poles to two ashes & a beech thence S. 78 W. 122 poles to a stake northeast corner to said Green's said survey, thence with his line S. 12 E. 133 poles crossing the creek to the beginning.



Levi D. Sharp
Nehemiah Rosebrog C. C.
Wilson L. Thompson M. k. r.

Thos. A. McArthur D. S.
Oct. 4th 1824
Dec 4. 1824

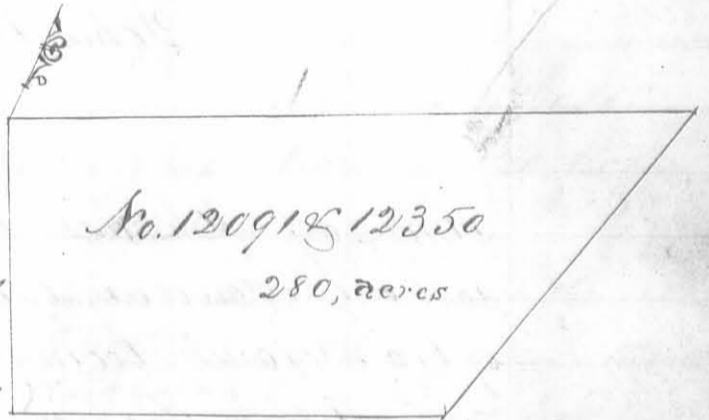


Surveyed for Charles Scott 156 acres of land in part of a military warrant No 5436 on Rush Creek; beginning at two ash and two Sugar trees northeast to Layton Van-cy's survey No. 3320; thence with his line S. 10 E 218 poles to a lynn, large ash & two sugar trees northwest corner to Green & Hubbard's survey No. 7102; thence with his line N. 80 E 120 poles crossing Rush Creek at 76 poles to a sugar tree two beeches & a hackberry; thence N. 10 W. 198 poles to an ash & two elms, thence S. 88 W. 123 poles crossing the creek to the beginning.

Hilkeah Rowbragh
Robert Rowbragh C.C.
P. N. White M. K. r.

James Taylor D.S.
Decem^r 15. 1823
Novem^r 16. 1824

Surveyed for James Galloway Jr
Apr 280 acres of land on a milita-
ry warrant No. 3236 and 18 acres
on No. 5812 on the waters of the Big
Miami; beginning at a bur oak



and elm southwest corner to George Clarks survey No. 9948, south-
east corner to said Clarks survey No. 9947 and north east corner
to Nathans Reeves survey No. 9927, thence with Reeves line S 12
E. 152 poles to a white oak in said line northwest corner to
William H Beards survey No. 9903 & 9928; thence with Beards
line N. 78 E. 224 poles to a stake in said line corner to Walter
Duns entry No. 12320; thence with said Duns line N. 31 E
207 poles to a stake corner to said Duns in the line of said
Clarks survey No. 9948, thence with the line of said Clarks
survey S. 78 W. 365 poles to the beginning.

George Henry
James Henry C.C.
David Chapman M. K. r.

Thomas S. Mathur D.S.
Sept. 30. 1824
Decem^r 3. 1824

No. 12350 & 13274
230, acres

Surveyed for James Galloway Jun^r 230 a-
cres of land, (100 acres) on a Military
warrant No. 3236 and 130 acres on part
of No. 2947 on the waters of the big Miami
beginning at a bur oak and elm south-
west corner to George Clark's survey No. 9948

and North east corner to Nathan Reeves survey No 9927, thence with
said Reeves line S. 12. E. 132 poles to a white oak in said line, North
west corner to William N Beard's survey No. 9903 & 9928, thence with
said Beard's line N. 78, E. 220 poles to a stake in said line, corner to
Walter Duns survey No. 12320, thence with said Duns line N. 31 E
182 poles to a stake corner to his survey in the line of Clark's said
survey, thence with said Clark's line S. 78 W. 342 poles to the beginning.

James Hill

Samuel Queen C. C.

John Watts M. R.

James Galloway Jun^r D. S.June 1st 1833

November 8. 1833

Surveyed for Chimwell Bancroft 463 acres of land on
part of a Military warrant No. 2257 on the waters
of big Miami; beginning at a hickory lynn and
sugar tree northeast corner to the representatives Francis
and James Taylors survey No. 9969 and North East cor-
ner to the Representatives of Robert Young's survey No.
9970; thence with a line of Robinson and others survey
No. 9987, N. 12 W. 400 poles crossing a small branch
at 20 and the north branch of Miami at 336 pole
to a beech north corner to survey No. 9987, thence S
78 W. 186 poles to two ashes and three elms, thence S
12 E 400 poles crossing the branch of Miami to a stake
in the line of survey No. 9969, thence with said
line N. 78 E. 186 poles to the beginning.

Levi D Sharp

Hilkiak Roselrag C. C.

Wilson L Thompson M. R.

Samuel Forrer D. S.

December 5th 1820December 12th 1820

No. 10503

463, acres

No. 10503
333 acres

Surveyed for Chimell Barrett 333 acres of land on part of a military warrant No. 2257 on the waters of big Miami; beginning at a hickory lynn and sugar tree north east corner to the representatives of Francis and James Taylor survey No. 9969 and north west corner to the representative of Robert Youngs survey No. 9970, thence with the line of Robinson and other survey No. 9987 N. 12 W. 258 poles crossing a small branch to a stake; thence S. 78 N. 186 poles to a stake south west corner to said Barrett's survey

No. 10503 of 130 acres, thence S. 12 E. 288 poles, crossing three branches to a stake in the line of said Taylor's survey No. 9969, thence N. 78 E. 186 poles to the beginning.

Livi D. Sharp
Michiah Rosebrag
Wilson L. Thompson M.k.r.

Thomas J. McArthur D.S.
May 4. 1826
May 16. 1826

Surveyed for Chimell Barrett 130 acres of land on part of a military warrant No. 2257 on the waters of the big Miami, beginning at a beech, elm, and ash north west corner to Robinson and other survey No. 9987, thence S. 78 N. 186 poles to two ashes and three elms thence S. 12 E. 112 poles to a stake; thence N. 78 E. 186 poles to a stake north west corner to said Barrett's survey No. 10503 of 333 acres, thence N. 12 W. 112 poles crossing the north branch of the big Miami to the beginning.

No. 10503
130. acres

Livi D. Sharp
Michiah Rosebrag
Wilson L. Thompson M.k.r.

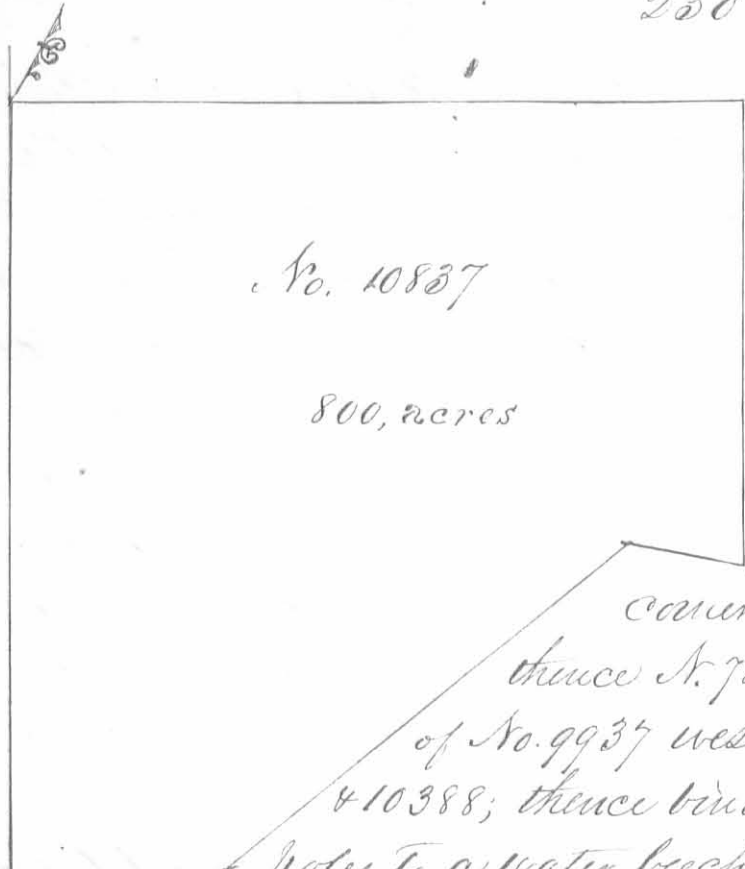
Thomas J. McArthur D.S.
May 4. 1825
May 16. 1825

No. 12110
200, acres

Surveyed for John Clark 200 acres of land on a military warrant No. 6511 on the waters of big Miami river; beginning at a hickory and maple at the southeast corner of James Kerrons entry No. 12066 which has been withdrawn and in the west line of Nathan Reeves survey No. 9927, thence S. 78 N. 187 poles to two white oaks and a hickory in the line of Walter Dean survey No. 9592. 9946 of 10121; thence S. 12 E. 196 poles to an ash and red oak, thence N. 61 1/2 E. 194 poles to an ash and maple in the line of Nathan Reeves said survey; thence with said line N. 12 W. 146 poles to the beginning.

Samuel Lane
Saml Richards
Samuel Hurd M.k.r.

Thomas J. McArthur D.S.
Novem. 4. 1824
Feb. 22. 1825



Surveyed for James Higgins 800 acres of land on part of a Military warrant No 6465 on the waters of Rush creek; beginning at two large beech Northeast corner to James Wrights survey No. 9956 and corner to No 9997 & 9978, thence S 12 E 400 poles to two ash and an Elm Northeast corner to James Remick's survey No 9936 thence N. 78 E. 120 poles to two beech in the line of No. 9937 west corner to Higgins survey No. 10387 & 10388; thence binding on said survey N. 40 E. 260 poles to a water beech and two oak corner to said survey; thence N. 78 E. 60 poles to a beech and ash; thence N. 12 W 240 poles to an ash and beech corner to survey No 10239; thence S. 78 W 385 poles to the beginning.

John Dodd
 Charles Hoffman C.C.
 P. A. White M.R.

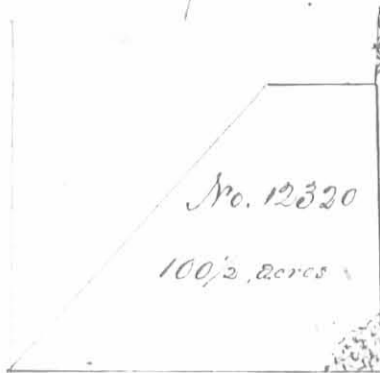
Thomas S. McArthur D.S.
 March 27th 1823
 Novem 6. 1824

Surveyed for Thomas Green 500 acres on part of a Military Warrant No. 6572 on the waters of Boker & Mill creek; beginning at a sugar tree and two beech Northwest corner to Cannon, Taylor, Williams & Pelham's survey No 9890, thence S. 78 W. 295 poles to a lynn & beech Northeast corner to Means & Clarke's survey of 100 acres No. 9889, thence S. 12 E 162 poles to a beech thence S. 78 W 105 poles to a stake in the line of the Representatives of Charles Porterfield's survey No. 9888; thence S. 12 E 80 poles to a beech thence N. 78 E 400 poles to a lynn in the line, of the Representatives of Charles Porterfield's survey No. 9888, of Cannon & others survey; thence N. 12 W. 222 poles to the beginning.



Samuel Zane C.
 Joseph Collins C.C.
 William Blafingen

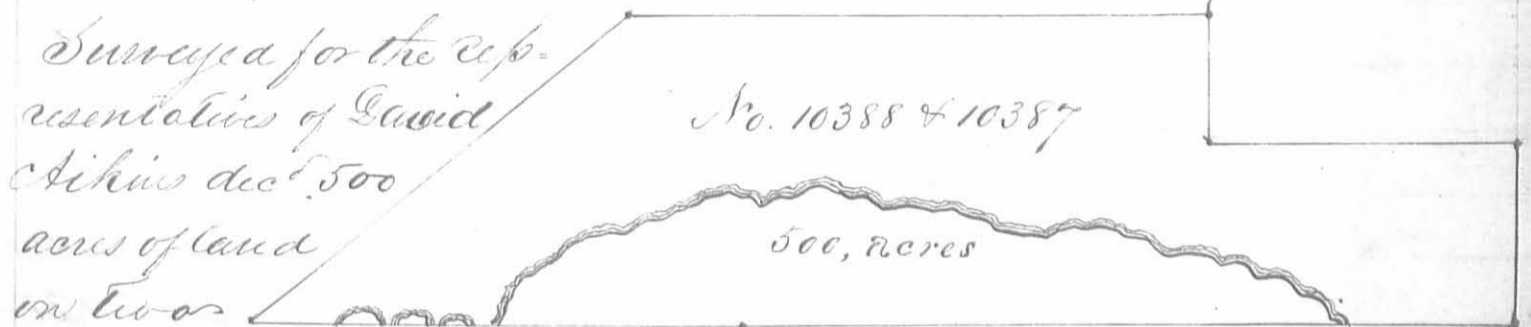
Thomas S. McArthur D.S.
 June 20th 1824
 October 11. 1826



Surveyed for Walter Dun aⁿ 100 1/2 acres of land on part of three Military warrants, 50 1/2 acres on No. 5828 10 acres on No. 6218 and 35 acres on No. 6520 on the waters of the big Miami river; beginning at four elms northwest corner to Robert Means Survey No. 9929 and southeast corner to George Clark's Survey No. 9948; thence with Means line S. 12 E. 152 poles to a stake in a large prairie in said line Northeast corner to William A. Beard's Survey No. 9903 & 9928, thence with Beard's line S. 78 W. 106 poles to a stake in said line; thence N. 31 E. 208 poles to a stake in the line of Clark's said survey, thence with said line N. 78 E. 54 poles to the beginning.

Virginia Howard
William Williams C.C.
John Peter M.k.r.

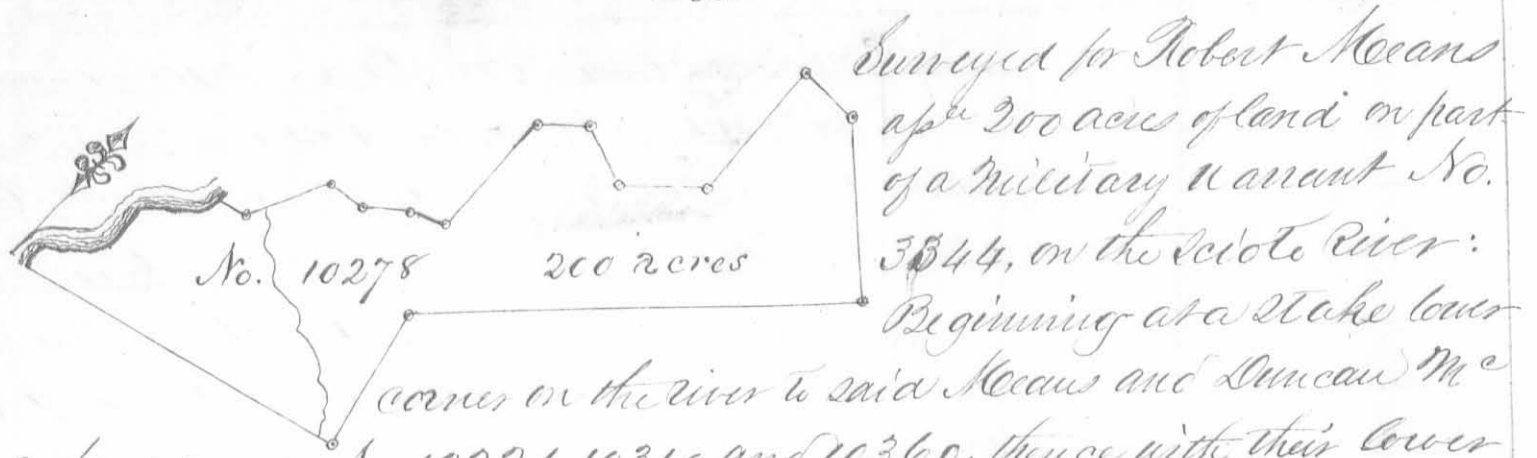
Walter Dun D.S.
Jan. 25. 1825
May 24. 1826



Military warrants No. 6009 and 6019 on Rush Creek; beginning at a lynn buckeye and two ironwoods northeast corner to Morrow and Taylor's Survey No. 9937 and Northwest corner to the representatives of New land. Madisons survey No. 9938, thence N. 78 E. 400 poles crossing the Creek at 310 poles to two beeches and a sugar tree northeast corner to Madisons said survey and Northwest corner to Taylor and Pierces survey No. 10060, thence N. 12 W. 100 poles to two beeches; thence S. 78 W. 100 poles to three ironwoods a white walnut and hackberry; thence N. 12 W. 60 poles to two beeches and an ash; thence S. 78 W. 300 poles to a water beech and two oak, thence S. 40 W. 250 poles to two beeches in the line of Morrow and Taylor's said survey, thence N. 78 E. 256 poles crossing the Creek at 48. 77. 90. 103. 114 and 127 poles to the beginning.

Francis Thompson
David McArthur C.C.
Matthew Bonner M.k.r.

Thomas S. McArthur D.S.
November 6th 1821
February 12th 1822



Surveyed for Robert Means
ap^{pr} 200 acres of land on part
of a military warrant No.
3844, on the Scioto River:

Beginning at a stake lower
corner on the river to said Means and Duncan Mc
Arthurs survey No. 10221, 10310 and 10360, thence with their lower
line N 78 E. 190 poles crossing a branch at 112 and on at 181 poles to
three beeches two of them down lower back corner to said survey; thence
N 12 W. 80 poles to a blue ash and three small beeches; thence N 45 E
237 poles crossing several drains to a stake; thence N 45 W. 98 poles to
two elms on the edge of a swamp; thence West 30 poles to two red oaks
and an ash near the edge of the prairie; thence with the prairie South
82 poles to a sugar tree; thence S. 50 W. 46 poles to two sugar trees and a
black walnut; thence N. 70 W. 32 poles to two ashes and a maple; thence
S. 50 W. 28 poles to two elms and a maple; thence South 72 poles to a blue
ash and buckeye; thence S. 72 W. 20 poles to a white ash; thence S. 51 W
27 poles to two buckeyes, a beech, hickory and horn beam; thence West
20 poles to two buckeyes and a thorn; thence S. 29 W. 49 poles crossing a
branch to a hack berry and buckeye; thence S. 75 W. 15 poles to a honey
locust, two buckeyes and a thorn on the bank of the river; thence up the
river and winding thereon N. 20 W. 11, S. 50 W. 34, S. 7 E. 26, S. 54 W. 35 crossing a
branch at 11 poles S. 8 W. 14 poles to the beginning.

Daniel Colvin 3
Noah Duval 3 66
Peter McArthur M.k.r.

Thomas J. McArthur J.S.
January 27th 1821.
March 29th 1821.

Surveyed for John Evans Apeu and William Withers 101²/₃
acres of land on part of two military warrants viz: Evans
70 acres on No 6526 and Withers 31²/₃ acres on No 6539
on the waters of Rush creek; beginning at two sugar trees and a beech
south west corner to Duncan McArthurs survey No 10631 thence with
the line thereof N. 78 E 200 poles crossing a deep drain at 85 poles and
a road at 114 poles to a small beech corner to John Moores survey
No. 9910, thence with a line thereof S. 12 E. 82 poles to a stake corner
to said survey; thence with another line thereof S. 78 W. 200 poles cross-
ing the road to a stake westerly corner to Moores said survey in the east line of
survey No. 9909 thence with said line N 12 W 82 poles to the beginning.

No	12536
101 ² / ₃	acres

John McCoy 3
Samuel Supler 3 66
John B. Magnus M.k.r.

E. P. Kendrick J.S.
June 10th 1831
February 1st 1834

Surveyed for John Evans of 400 acres of land on part of a Military Warrant No. 6526 on Mad River; beginning at a stake in a prairie north easterly corner to Samuel Finleys survey No 4493 & 4525 thence with his line S. 70 N. 96 poles crossing a branch to two small box oaks and a black oak corner to Walter Duns survey No. 10853, thence with his line N. 24 E. 185 poles crossing a branch to three large white oaks north east corner to said survey and north westerly corner to said Duns survey No. 9592, 9618 & 10075, thence with Duns line S. 80. E 300 poles crossing Mad River to a hickory corner to said survey; thence with another line thereof and the line of said Duns survey No. 9878 of 302 acres S. 20. E 262 poles crossing two branches to two white oaks and a black walnut corner to said survey; thence with another line thereof S. 70 N. 207 poles to three black oaks from one root on the line of Finleys said survey, thence with said line N. 20 N. 240 poles crossing a spring branch and Mad River to the beginning.

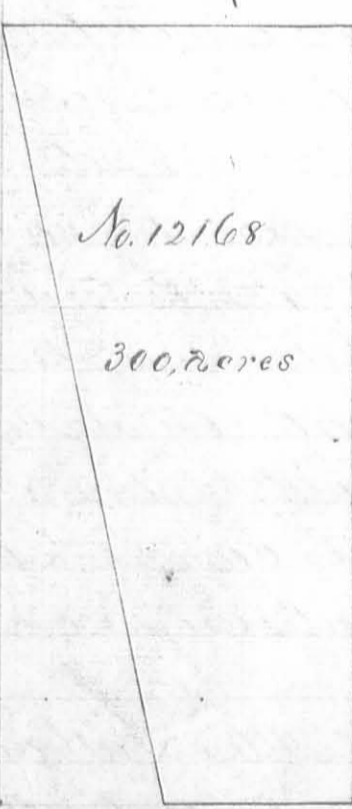


Charles Kessler
John Guthridge

Duncan W. Arthur D.S.
March 10th 1823

Solomon M. Colloch M.L.R.

June 18th 1823



Surveyed for Samuel Smith of 300 acres of land on part of a Military Warrant No. 6519 on the waters of Big Miami; beginning at two hickories north west corner to the representatives of Michael Rudolphs survey No 9902; thence S. 78 N 87 poles to two white oaks and a hickory in Roberts line north west corner to Duns and Bayles survey No. 10122, 10248 & 10249; thence with Roberts line N. 24 30' N. 410 poles to two white oaks and an ash in said line southwest corner to Isaac Gardner survey No. 12052; thence with his line N. 78. E 181 poles to two ashes and two hickories southeast corner to Gardner and north west corner to Rudolphs said survey; thence with Rudolphs line S 12 E 400 poles to the beginning.

George Henry
James Henry

Thomas S. Arthur D.S.
January 4th 1823

Benjamin M. Colloch M.L.R.

February 21st 1823

No. 12075

55, acres

Surveyed for Hughes Woodson 55 acres of land on part of a military warrant No. 1757 on the waters of Hartys Creek: Beginning at a hickory and two Jack oaks easterly corner to Joseph Chambers survey No. 7399 in the line of Johnston and Grahams survey No. 7245; thence with their line S. 60 E 66 poles to a stake in a prairie northerly corner to said Chambers survey No. 7400; thence with his line S. 30 W. 134 poles to a stake in a prairie westerly corner to said survey; thence N. 60 W. 66 poles to a stake in a prairie; thence N. 30 E. 134 poles passing the southerly corner of said Chambers survey No. 7399. and with his line to the beginning.

Meoses Mitchell

Samuel Mitchell C.C.

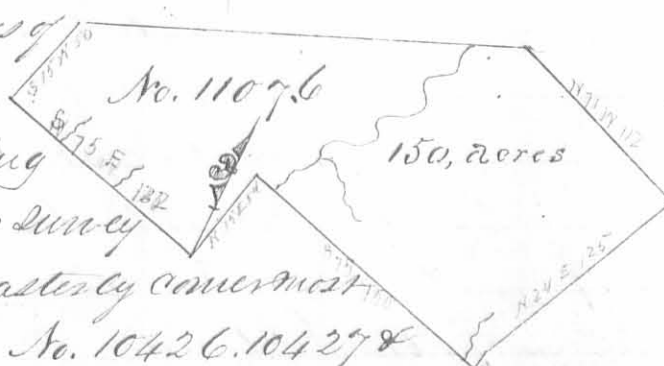
James Boal M.k.r.

James Galloway Jun. D.S.

March 6th 1823

June 7th 1823

Surveyed for James Acron 150 acres of land on part of a military warrant No. 104 on the waters of Mead River; beginning at a beech in the line of Samuel Davis survey No. 3216 N. 75 W 150 poles from his easterly corner most westerly corner to Walter Duns survey No. 10426. 10427 & 10441; thence with Duns line N. 15 E. 54 poles to two beeches corner to said survey; thence with another of his lines S. 75 E. 150 poles crossing a branch at 14 and one at 138 poles to two beeches and a sugar tree corner to said survey; thence N. 15 E. 12 poles to two beeches a sassafras and red oak corner to said survey; thence N 24 E 120 poles to two beeches and an ash; thence N. 71 W. 112 poles to a sugar tree corner to Robert Mecons and McArthurs survey No. 4948 & 9423; thence with their line S. 65 W. 232 poles crossing a branch to a sugar tree red elm and small black walnut in said line north easterly corner to Duncan McArthurs survey No. 9876; thence with his line S. 15 W 50 poles to two sugar trees and two beeches northerly corner to Davis said survey, thence with his line S. 75 E 122 poles crossing a drain at 30 and at 68 poles to the beginning.



James Marmont

Robert Marmont C.C.

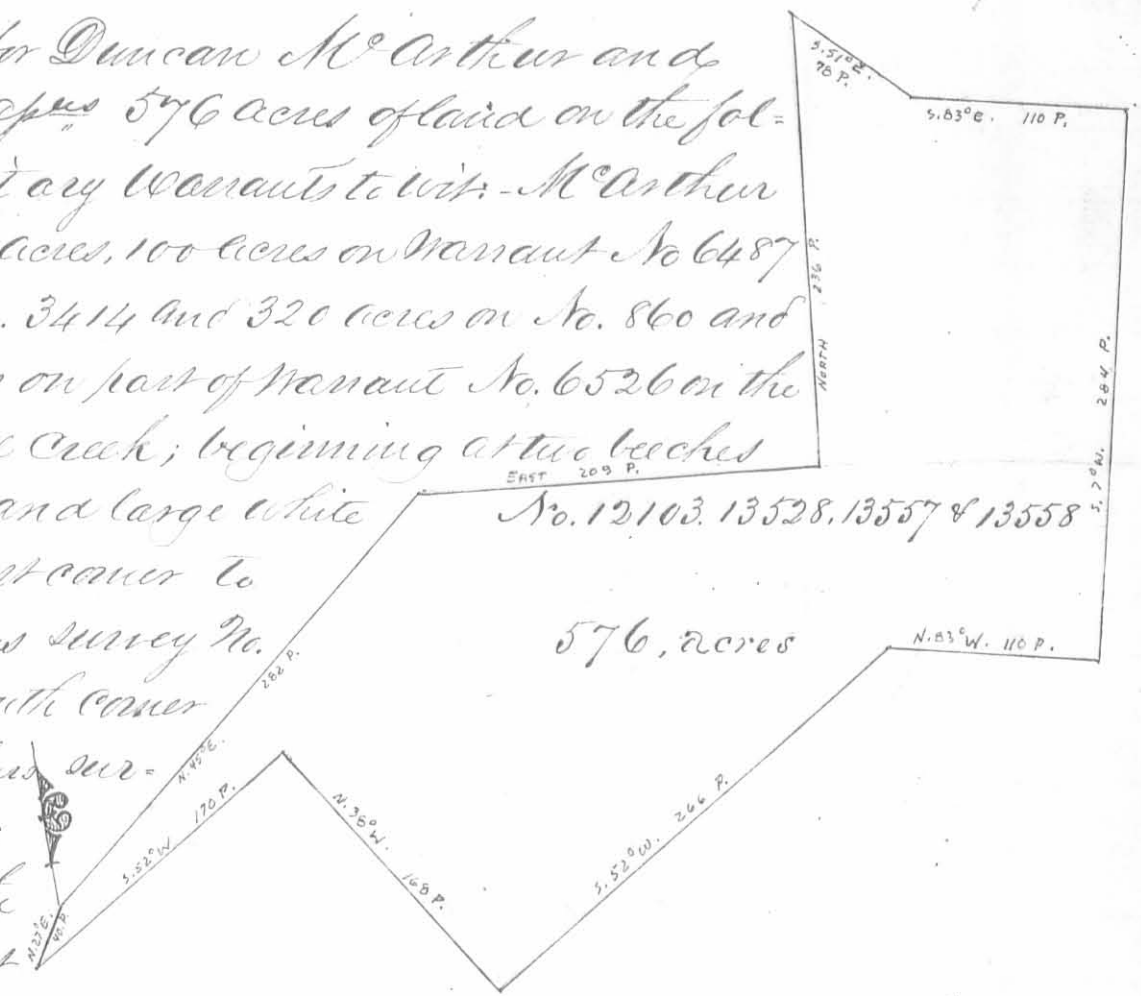
Aaron Brown M.k.r.

Allen Satham D.S.

October 24th 1822

June 28th 1823

Surveyed for Duncan McArthur and John Evans ^{aprs} 576 acres of land on the following Military Warrants to wit: - McArthur 493 acres, 100 acres, 100 acres on Warrant No 6487 73 acres on No. 3414 and 320 acres on No. 860 and Evans 83 acres on part of Warrant No. 6526 on the waters of Mill Creek; beginning at two beeches a sugar tree and large white oak south east corner to Robert McCaus survey No. 5091 and south corner to said McCaus survey No. 13432; thence with the line of the last



mentioned survey N. 45 E. 282 poles crossing two branches to a stake Elm, Lym and two hickories, an easterly corner to said survey No. 13432, thence east 209 poles crossing a branch to two beeches and an ironwood; thence North 236 poles passing the S.E. corner of Strother Jones survey No 4210 and with the east line thereof to a stake in the line of Robert Vance's survey No. 4995, thence with said line S. 51, E. 78 poles to a stake corner of said survey thence with another line of said survey No 4995 S. 83, E. 110 poles to two sugar trees and a buckeye North west corner to James Galaway's survey No. 4813 thence with the line of Galaway's said survey S. 7, N. 284 poles crossing two branches to a lym ash and buckeye, S. W. corner to said survey in the line of Tuttle Hudson's survey No. 6232, thence with said line N. 83 N. 110 poles to three sugar trees westerly corner to said survey and north corner to Richard Calls survey No 4810, thence with the line thereof S. 52 N. 266 poles to a hickory, sugar tree, walnut and buckeye west corner to said survey and east corner to said Calls survey No 4809; thence with the line of the last mentioned survey N. 38, N. 168 poles to two sugar trees and a buckeye north corner thereof, thence with another line of the same, S. 52, N. 170 to two buckeyes and a sugar tree west corner to said survey, thence N. 27 E 40 poles to the beginning.

Aspen Garwood 3
 John Garwood 3 C.O.
 Samuel Duffler A.C.R.

C. P. Kendrick D. S.
 September 13. 1834
 September 15. 1834

Surveyed for the heirs
 of Duncan McArthur
 505 acres of land
 on part of four Mil
 itary Warrants to
 wit. 100 acres on No
 6487. 73 acres on
 No. 3414. 320 acres
 on No. 860 and 12 acres
 on No. 5336 on the
 waters of Mill Creek; beginning
 at two beeches, a sugar tree and large
 white oak southeast corner to Robert
 McCaus survey No 5091 and south corner to
 Duncan McArthur's survey No. 13432 thence with the line of the last
 mentioned survey N. 45. E. 282 poles crossing two branches to a stake
 elm, lynn and two hickories an easterly corner to said survey No. 13432
 thence East 209 poles crossing a branch to two beeches and an iron wood
 thence N. 236 poles passing the southeast corner of Strother Jones
 survey No 4210 and with the east line thereof to a stake in the line
 of Robert Vance's survey No. 4995, thence with said line S. 57 E 78 poles
 to a stake corner to said survey; thence with another line thereof S. 53
 E. 110 poles to two sugar trees and a buckeye northwest corner to James
 Gallaway's survey No. 4813; thence with the line of Gallaway's said
 survey S. 7 N. 284 poles crossing two branches to a lynn ash and
 buckeye south west corner to said survey and in the line of Tuttle
 Hudson's survey No. 6232; thence with said line N. 83 N. 110 poles
 to three sugar trees westerly corner to said survey and north cor-
 ner to Richard Calk's survey No. 4810, thence with the line thereof
 S. 52 N. 266 poles to a hickory, sugar tree, walnut and buckeye west
 corner to said survey and east corner to said Calk's survey No. 4809
 thence with the last mentioned survey N. 38 N. 168 poles to two sugar
 trees and a buckeye north corner thereof, thence with another line
 of the same S. 52 N. 170 poles to two beeches and a sugar tree west
 corner to said survey; thence N. 27 E. 40 poles to the beginning.

Aaron Garwood J.
 John Garwood J. C. C.
 Samuel Dupler M. R.

E. P. Kendrick D. S.
 February 27. 1843
 February 28. 1843

No. 12017
200, acres

Surveyed for Archibald Gordon 200 acres of land on a Military warrant No. 5508 on the waters of Rush Creek: Beginning at a stake north west corner to Alexander Parkers survey No. 9958 in the line of Sawyers survey No. 10239, thence S. 12 E 246 poles to two beech in the line of Parker, corner to Atkins survey No 10387 & 10388, thence with a line of said survey S. 78 W. 134 poles to an ash and beech; thence N. 12 W. 246 poles to a hickory & elm in the line of Sawyers said survey; thence N. 78 E 154 poles to the beginning.

Levi D. Sharp
Wilkieh Roselrag
Mason S. Thompson. M.k.r.

Thos J. McArthur D.S.
March 25. 1823
November 5. 1824

No. 12074
100, acres

Surveyed for John A. Reid 100 acres of land on a military warrant No. 6488 on the waters of the big Miami Beginning at a sugar tree, ash and red oak north east corner to Robert Means survey No 9973 in the line of Duncan McArthur survey No 9974 for 390 acres; thence with said McArthur line N. 12. W 116 poles to a sugar tree beech and dogwood north west corner to his survey and south east corner to Ephraim Raephs survey No. 9996, thence with said Raephs line S. 78. W. 140 poles to a stake in said line; thence S. 12 E. 116 poles to a stake in the line of said Means survey, thence with said Means line N. 78. E. 140 poles to the beginning.

George Henry
James Henry
Benjamin McCulloch M.k.r.

Thomas J. McArthur D.S.
March 20. 1824
Decemr 3. 1824

No. 12485
60, acres

Surveyed for Joseph Spencer 60 acres of land on part of a military warrant No. 6567 on the waters of the big Miami; beginning at two black oaks and red oak and sugar tree south west corner to William Millers survey No. 3324 in said line, thence with said line N. 20. W. 342 poles to a stake in the Greenville Treaty line; thence with said line N. 78. E. 58 poles to two hickories, an elm and white oak in the line of said Millers said survey; thence with said line S. 10. E. 340 poles to the beginning.

Richard Baldock
George Sroufe
Moses Collier M.k.r.

James Callaway D.S.
Oct. 11. 1824
March 25. 1825

Surveyed for James Gallaway Junr Ap^l William Schooler and Joshua McQueen; 523 acres of land in part of five Military Warrants; Gallaway 213 acres 100 acres on No 712, 80 acres on No 5812, 33 acres on No 6463; Schooler 250 acres on No 6499 and McQueen 60 acres on No 6578 on the waters of Darby Creek; beginning at two Sugar trees and a beech easterly corner to Thomas Sears survey No 545 and Northerly corner to said Sears survey No 4943, thence with the line of survey No. 545 N. 38 W. 400 poles crossing a branch to a stake in a field Northerly corner to said survey in the line of Benjamin Roifpean's survey No 4811, thence with said line and corner thereof N. 52 E 195 poles crossing a branch to a hickory red oak and sugar tree; thence S. 38 E 430 poles to beches a dogwood and two iron woods; thence S. 52 W. 195 poles crossing a branch to a stake in the line of said Sears survey No 4943; thence with said line N. 38 W. 30 poles to the beginning.

Samuel Warner 3
 David Warner 3 C.C.
 Joshua McNaide M.k.r.

James Gallaway Junr J.S.
 March 12^o. 1824
 May 15^o. 1824

Surveyed for John Shanks and Joshua McQueen 200 acres of land on part of two Military Warrants; Shanks 100 acres on No 6181 and McQueen on No 6578 on the waters of Mill creek; beginning at a red oak, beech and sugar tree South east corner to the Representatives of Swelling Jones survey No. 4815; thence N. 83 W 260 poles crossing a branch at 6 and several times afterwards to two beches, a dogwood, horn beam and ironwood in said line corner to Tuttle Hudsons survey No. 6232; thence with Hudsons line and course thereof S. 38, E. 366 poles to two sugar trees and a beech in the line of Richard Lee's survey No. 3448; thence with his line N. 7 E, 260 poles crossing a branch at 238 poles to the beginning.

Samuel Warner 3
 David Warner 3 C.C.
 Joshua McNaide M.k.r.

James Gallaway Jr J.S.
 January 16^o. 1824
 April 5^o. 1824

Surveyed for William Mithers 280 acres of land on part of a Military warrant No. 6539 on Darby Creek and Beaver run; beginning at two sugar trees East corner to Robert Paver's survey No. 3680 and in the line of Richard Stephens survey No. 3163; thence with said line and corner there of N 52 E, 500 poles crossing the creek at the mouth of Beaver run to an elm and two beeches north westerly corner to Charles Symmies entry No. 158, thence N 84 W, 285 poles crossing flat branch and Beaver run to a stake thence N. 38 W 60 poles to a stake in the lower line of Levi Hollingsworth's survey No. 3160; thence with said line S 52 W, 95 poles to two beeches southerly corner to Hollingsworth's said survey in the line of Powers said survey; thence with said line S. 38 E. 260 poles crossing the creek or what is now called mill branch to the beginning.

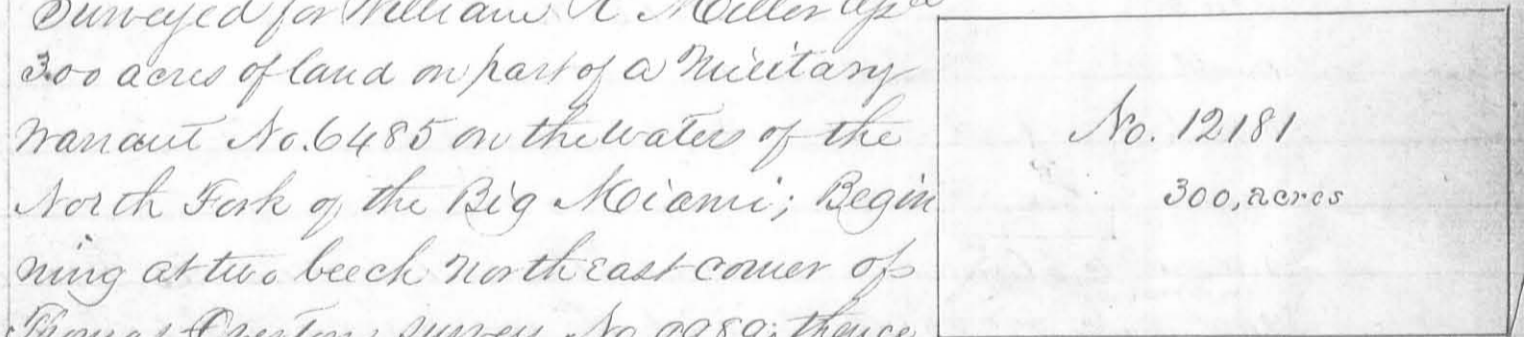
William Bishop
 Medlock Stokes
 Joseph Garwood M.k.r.

Duncan McArthur D.S.
 June 17th 1823
 June 19th 1823

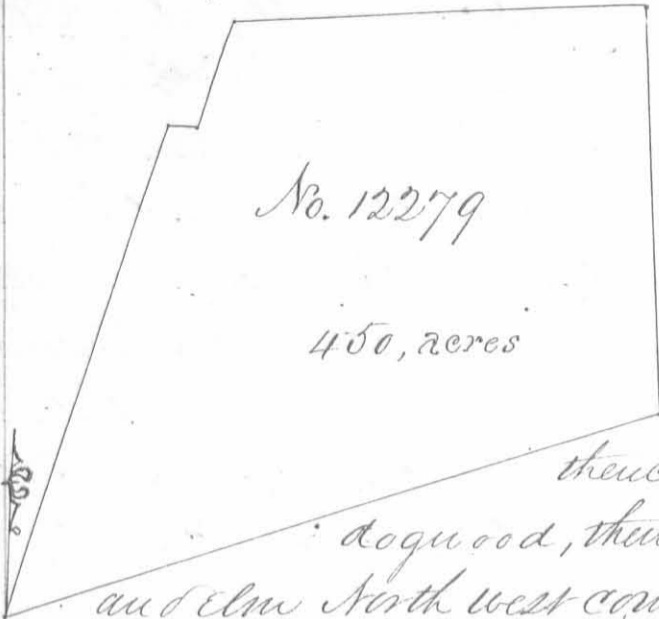
Surveyed for William R. Miller 300 acres of land on part of a Military warrant No. 6485 on the waters of the North Fork of the Big Miami; Beginning at two beech northeast corner of Thomas Overton's survey No 9989; thence S. 78 W. 300 poles to three beech northwest corner to said survey and corner to Nathaniel Burwells Easterly survey No 9988, thence N. 12 W 160 poles to an ash; thence N. 78 E 300 poles in the line of Fowler, Taylor and Gambles survey No 9998, thence S. 12 E 160 poles to the beginning.

Levi D. Sharp
 Nikiak Rosebrag
 Nelson S. Thompson M.k.r.

Thomas S. McArthur D.S.
 March 27th 1823
 September 4th 1824

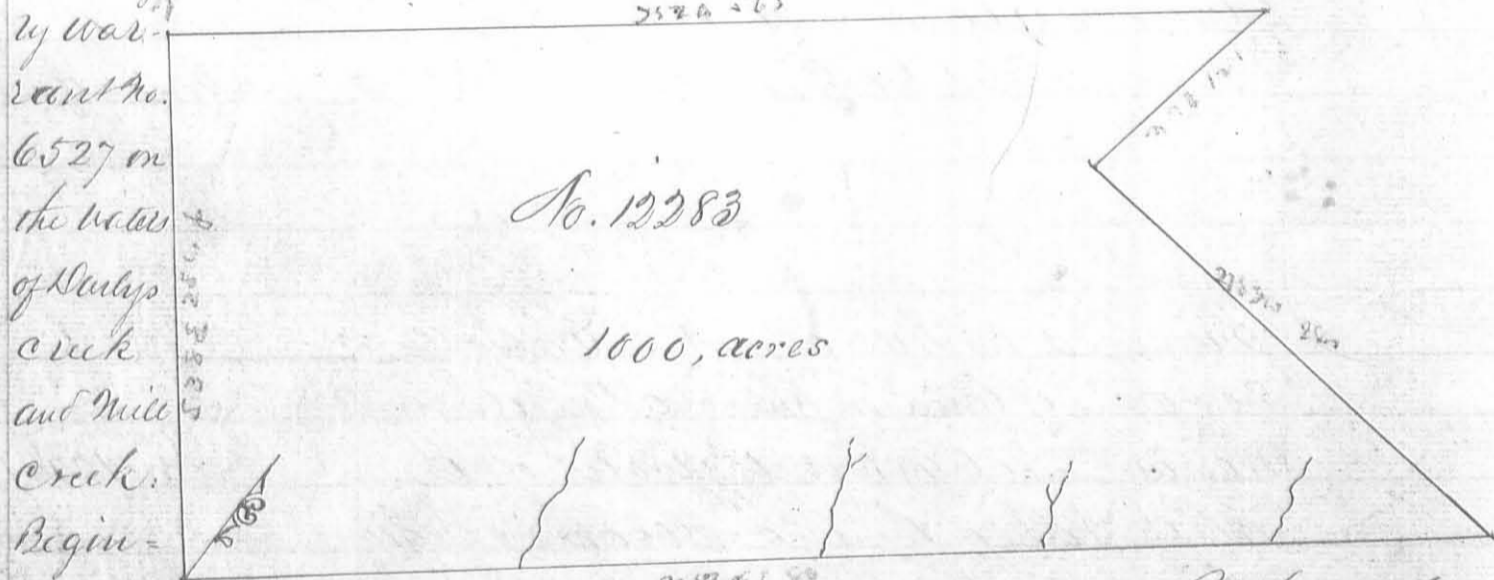


Survey of George Lambert 450 acres of land on part of a Military warrant No. 6550 on the waters of Big Miami; beginning at a lynn, beech, sugar tree and ash north west corner to St Maples survey No 12178 in the line of Dun and Darsons survey No 12072, thence N 9 E 268 poles to a stake; thence N 78 E 14 poles to two blue ash and a cherry; thence N 9 E 58 poles to two beech and a dogwood, thence S 12 E 10 poles to a beech, sugar tree and elm North west corner to Saylor and Hawkins survey No. 11015; thence S. 63 W. 357 poles to the beginning.



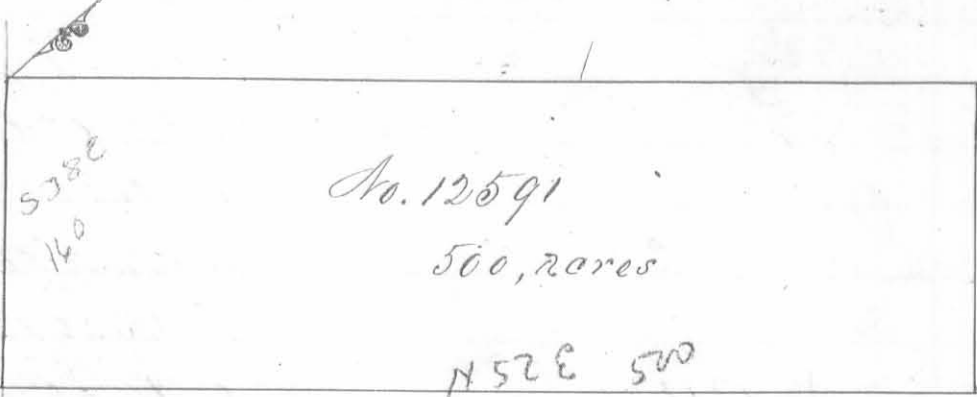
Thomas J. McArthur D.S.
December 14th 1823
November 6. 1824

Survey for Young Milkewon 1000 acres of land on part of a Military warrant No. 6527 on the waters of Sullys creek and Mill Creek. Beginning at two lynn and a sugar tree westerly corner to Richard Surveys survey No. 12282, thence with the line of said survey and passing the North corner thereof N 52, E, 680 poles crossing several small branches to two black ashes and a white ash and beech in the line of Richard Sees survey No 3448 thence with said line N. 83. W. 282 poles to a sugar tree beech and hickory south west corner to Sees said survey; thence with another line thereof N. 7 E. 120 poles to two sugar trees; thence S 52 W 565 poles to two elms and a beech; thence S. 38, E. 284 poles to the beginning.



John Inskip
Sefi St. Yarnwood C.C.
Thomas J. McArthur M.A.R.

Quincey McArthur D.S.
Oct 26. 1824
Nov 23. 1824



Surveyed for Allen
M Lane 500 acres of land
on two military warrants
No 6411 & 6412 on the wa-
ters of Mill Creek. Begin-
ning at two hickories

and an ash northerly corner to Jourdans survey No 5275 in the
line of No 4810, thence S. 38. E 160 poles to two elms and a beech
west corner to Young Wilkersons survey No 12283 thence with his
line N. 52, E. 500 poles to two sugar trees in the line of No 12388 &
12401; thence binding on said survey N. 38 W 160 poles to three
sugar trees Easterly corner to survey No 6232, thence binding there-
on and on No. 4810 S 52, W. 500 poles to the beginning.

John Inskip
Jepu H Garwood C.C.

Allen Latham S.
July 20th 1829
August 20. 1830

Surveyed for John Evans 466²/₃ acres of land on part of
land on part of a military warrant No. 6524 on the waters
of Rush Creek a branch of the Scioto River; beginning at
a hickory and two beeches the south easterly corner to Tay-
lor and Pierces survey No. 10060 for 888²/₃; thence N 78 E No 12112
(passing the north westerly corner of Tibbs and others sur-
vey No. 9915, a beech & two sugar trees at about 50 poles) 466²/₃ acres
306 poles to a stake in the line of said survey; thence
N. 12 W. 400 poles to a stake in the line of Robert Means
survey No. 9959; thence with said line S
78. W. 148 poles to a stake northeasterly
corner to the Reps. of Richard Calls sur-
vey No 7161 for 296 acres; thence with
the line of said survey S. 12 E. 300 poles to the south easterly corner
of said survey; thence with another line of said survey S. 78, W. 158
poles to a stake in the line of the aforesaid Taylor and Pierces sur-
vey; thence with their line S. 12 E 100 poles to the beginning.

Levi D Sharp
Helkiah Rosebrag C.C.
Wilson L. Thompson M.k.r.

John Evans D.S.
Febry. 25th 1830
March 17. 1830



No. 12112

1333 $\frac{1}{3}$, acres

Surveyed for the heirs of Elizabeth R. Northington 1333 $\frac{1}{3}$ acres of land on a military warrant No 6530 on the waters of Rush Creek; beginning at a stake south east corner to John Evans survey No 12112 for 466 $\frac{2}{3}$ acres in the north line of the Rep^t of Willoughby by Tibbs and others survey No. 9915, thence with

their line and the line of Richard Dorseys survey No. 12105 N. 78. E 533 $\frac{1}{3}$ poles passing a maple ash and Spanish oak northwest corner to Dorseys said survey at 133 poles to a stake northeast corner to said survey in the line of the Reps. and services of George Minchesters survey No 10971, thence with said line N. 12 W. 400 poles to a hickory, ash and maple, northwest corner to said survey in the line of the Rep^t of Michael Rudolphs survey No. 9960 & 10042, thence with the line of said survey and the line of Robert Means survey No 9959 S 78 W 533 $\frac{1}{3}$ poles crossing a branch at 313 to an elm, beech and sugar tree south west corner to said Rudolph and a branch at 410 poles to a stake in the line of said Means said survey and north east corner to Evans said survey No. 12112, thence with Evans line S. 12 E 400 poles to the beginning.

Daniel Gregg

Andrew D. Hendrick C.C.

James McArthur M.

E. P. Hendrick D.S.

July 1st 1840July 15th 1840

Surveyed for John Huston 100 acres of land on a military warrant No 6685 on the waters of the big Miami River; beginning at a small ash and two beech southwest corner to Ephraim Ralphs survey No. 9990 thence with his line N. 78. E 124 poles to a beech and two sugar trees, thence S. 12. E 124 $\frac{1}{2}$ poles to a white oak cherry and ironwood; thence S. 78. W. 124 poles to two maples; thence N 12 W. 124 $\frac{1}{2}$ poles to the beginning.

Levi D. Sharp

Hilkiah Roseburgh C.C.

Melvin S. Thompson

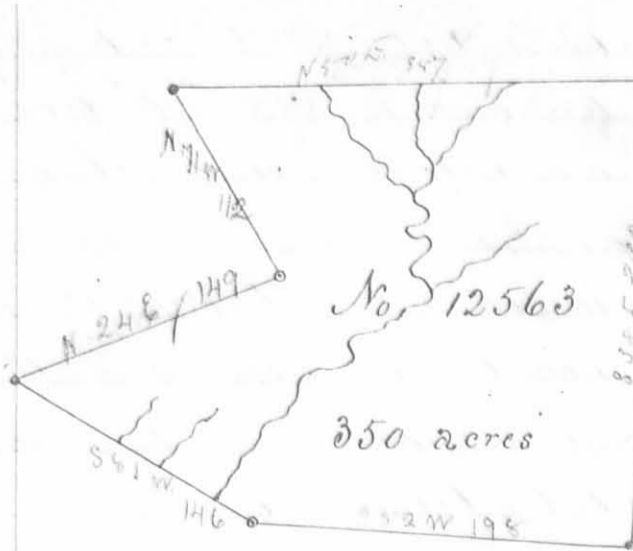
Alva Satham S.

March 15. 1830

March 16. 1830

No. 13116

100 acres



Surveyed for Outliest Harrison
 of a Military warrant No. 6660 on the
 waters of Mill Creek; beginning at two
 beeches and an ash south corner to Sit-
 tleberry Aldredges survey No. 9372 west
 corner to Joseph and Benjamin
 W. Ladds and Thomas Norwells sur-
 vey No. 9198 and north corner to Thom-

as Perkins survey No. 9370, thence with Perkins line S 52 W 198
 poles to an ash and beech west corner to Lucia survey and North cor-
 ner to Walter Lums survey No. 10426, 10427 & 11041; thence with
 his line S 81 W 146 poles crossing several branches to two beeches
 a sassafras and red oak corner to said survey and corner to
 James Herons survey No. 11076, thence with his line N. 24 E 149
 pole to two beeches and an ash corner to said survey; thence
 with another line thereof N. 71 W. 112 poles to a sugar tree corner
 to said survey and corner to Havens and M. Arthur's survey No. 4984
 9423 & 9872, thence with their line N. 50 E 387 poles crossing several
 branches to a stake corner to their survey in the line of John M.
 Donalds survey No. 5088, thence with said line S. 38 E 12 poles to
 three beeches and a sugar tree north corner to Aldredges said
 survey; thence with his line S. 52 W 134 poles to a lym, dog-
 wood, hickory, ironwood, and sugar tree west corner to said
 survey; thence with another line thereof S. 38 E 238 poles to the
 beginning.

William Kiwell
 Asahel Kiwell C.C.
 Aaron I. Hunt M.k.r.

Adwallader Wallace D.S.
 April 1st 1825
 Aug^t 31st 1825

Surveyed for Joshua Kinard 100 acres of land on a mili-
 tary warrant No 5073 on the waters of Mill Creek. Begin-
 ning at a sugar tree and two beeches N. W. corner of Luke Can-
 ons and others survey No. 9890, thence S. 78 W 100 poles to a
 stake S. E. corner of Terence Conners survey No. 13202;
 thence N. 12 W. 160 poles to two sugar trees and an ash;
 thence N. 78, E 100 poles to w stake in line of Nicholas Taliferos entry
 No. 9912, thence S. 12 E 160 poles to the beginning.

No. 13203
 100 acres

John Resbrook
 William Paxon C.C.
 John Richerson M.k.r.

C. P. Kendrick D.S.
 October 16th 1830
 October 18, 1830

No. 13199

223 1/3 acres



Surveyed for William M. Kenton of 223 1/3 acres of land on part of a Military Warrant No 2898 on the waters of Mill Creek; Beginning at a rock sugar tree beech & ironwood N.W. corner of John Griffiths 100 acre survey No. 9911 thence N. 12 W. 240 poles to three beeches; thence N. 78 E 154 poles to two sugar trees and Ironwood, thence S 12 E 240 poles to two ashes, a sugar tree and two dogwoods, thence E. 78 N. 154 poles to the beginning.

John Rosebrock
William Paxon C.C.
John Richerson M.k.r.

E. P. Kendrick D.S.
October 16th 1830
October 18. 1830

Surveyed for Nicholas Telepro 17 1/2 acres of land on part of a Military warrant No 554 on the waters of Mill Creek, Beginning at two sugar trees & an ash S.E. corner of William M. Kenton's survey No. 13200, thence with Kenton's line N. 12 W. 240 poles to three beeches and a sugar tree, thence N. 78 E. 112 poles to three beeches S.E. corner of James Benrick's survey No. 9936, thence S 12 E. 240 poles to a stake, thence S. 78 W. 112 poles to the beginning.

No. 12201

17 1/2 acres



John Rosebrock
William Paxon C.C.
John Richerson M.k.r.

E. P. Kendrick D.S.
October 16th 1830
October 18. 1830

No. 13202

200 acres



Surveyed for Terence Corner 200 acres of land on a Military Warrant No 3968 on the waters of Mill Creek Beginning at three beeches and two sugar trees South East corner of John Griffiths 100 acre survey No. 9911; thence with Griffiths line N. 12 W. 160 poles to a sugar tree, beech, ironwood and hickory; thence N. 78 E 200 poles to 2 sugar trees and an ash, thence S. 12 E 160 poles to a stake in the North line of Lewis and others survey No. 9889, thence S. 78 W. 200 poles to the beginning.

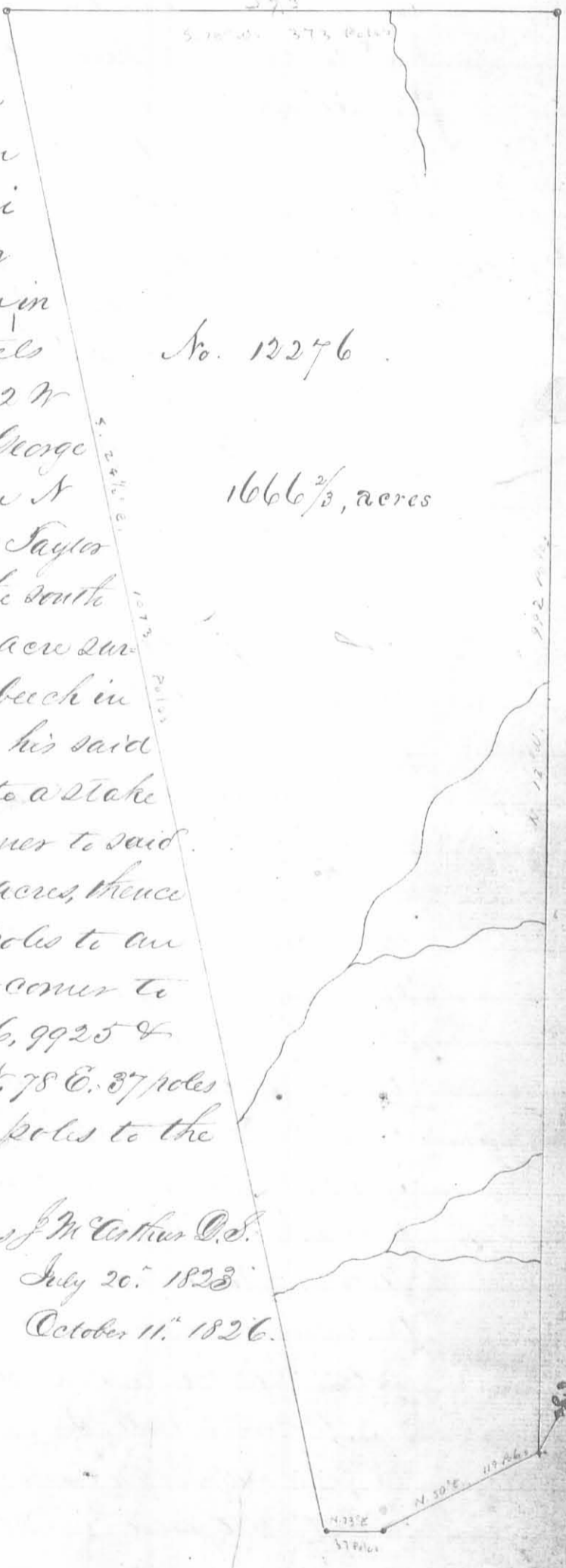
John Rosebrock
William Paxon C.C.
John Richerson M.k.r.

E. P. Kendrick D.S.
October 16th 1830
October 18. 1830

Surveyed for Valentine Peers
 1666 2/3 acres of land on part of a
 Military Warrant No 6549 on
 the waters of the Big Miami
 and Scioto Rivers: Beginning
 at a beech ash and how beam in
 the line of James Taylor & Steels
 survey No. 9968 - 62 poles N. 12 W
 from the Southwest corner of George
 Clarks survey No. 9947, thence N
 12 W. 992 poles passing Jones, Taylor
 & Steels corner and passing the south
 corner of David Lambert's 1000 acre sur-
 vey No. 12277 at 697 poles to a beech in
 his line 295 poles N 12 W from his said
 corner; thence S 78 W. 373 poles to a stake
 in Roberts line southwest corner to said
 Peers former survey of 2666 2/3 acres, thence
 with said line S. 24 1/2 E 1073 poles to an
 ash, maple & elm northwest corner to
 Walter Duns survey No 9946, 9925 &
 10121; thence with his line N. 78 E. 37 poles
 to two ash, thence N. 50 E 119 poles to the
 beginning.

George Henry
 James H. C.

Thomas J. McArthur C.S.
 July 20. 1823
 October 11. 1826.



No. 12276

1666 2/3, acres

No. 13200
200 acres

Surveyed for William M Newton 200 acres of land on a Military Warrant No 4485 on the waters of Neile Creek: Beginning at two ashes a Sugar tree and two dogwoods S.E. Corner of said Newton Survey No. 13199 thence N. 12 W 240 poles to two sugar trees and Ironwood, thence N. 78 E 138 poles to three beeches and a sugar tree, thence S 12 E. 240 poles to two sugar trees and an ash, thence S. 78 W. 138 poles to the beginning.

John Rosebrock
William Dixon
John Richardson M.k.r.

E.P. Kendrick, D.S.
October 16th 1830
October 18th 1830

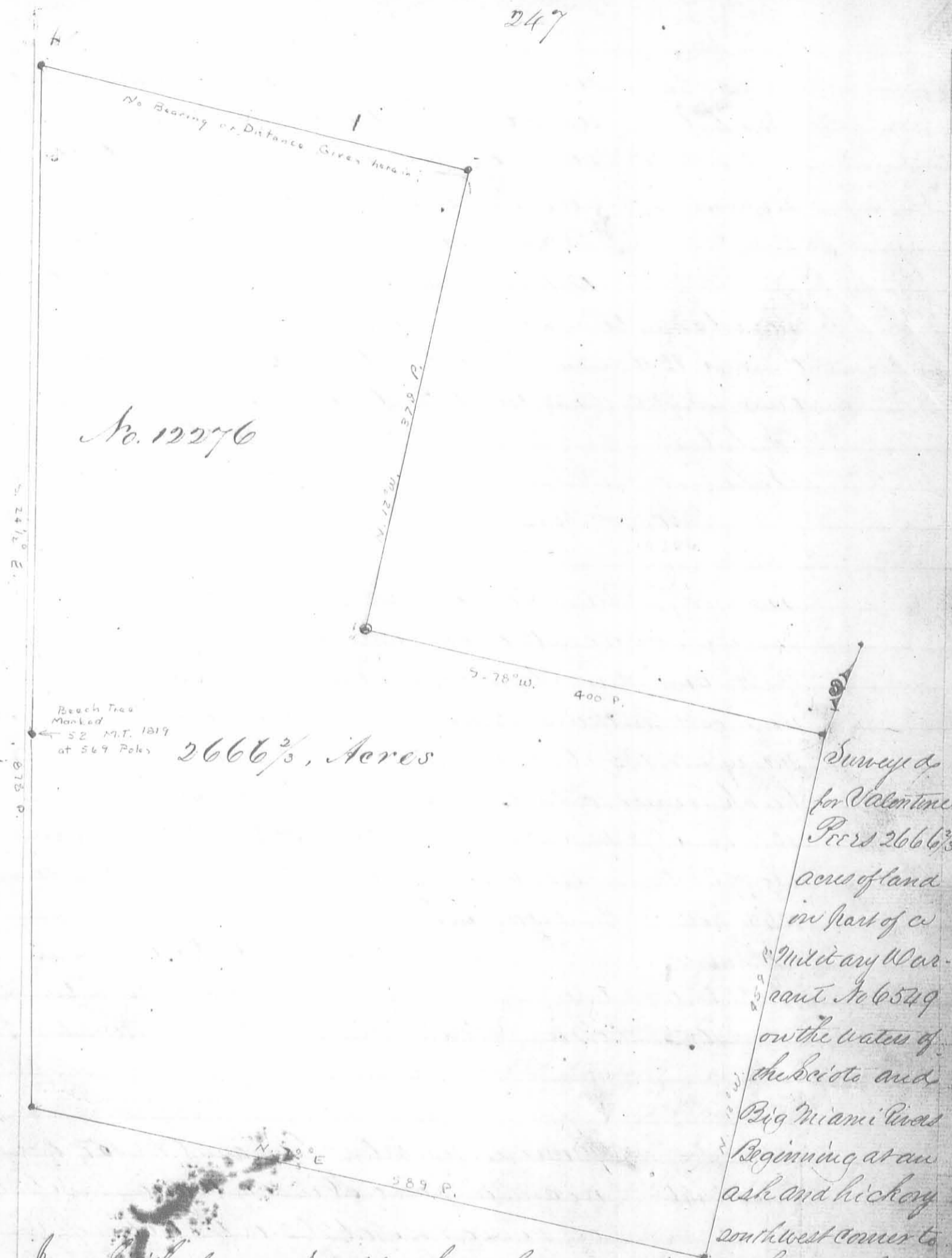
Surveyed for William M Newton 1046 acres of land on part of a Military Warrant No. 854 on the waters of Bokes Creek, beginning as a buckeye but oak, ash and horn beam on the bank of said Creek southwest corner to Stanton & Madison's

No. 13318
1046, acres

Survey No. 9938 & N.W. corner to Swan & others Entry, No. 9913, thence S. 78 W. 459 1/4 poles to three beech and a sugar tree corner to said Newton's Survey No. 13200 thence with his line to two sugar trees and an ash S.E. corner to said survey thence N. 78 E. 112 poles to a stake N.E. corner to Joshua King's survey No. 13203; thence S. 12 E. 160 poles to a sugar tree and a beech, thence N. 78 E. 347 1/4 poles to three beech south east corner to Swan and others aforesaid Entry; thence N. 12, W. 400 poles to the beginning.

John Rosebrock
William Paxton
John Richardson M.k.r.

E.P. Kendrick D.S.
2nd 1832
2nd 1832



No. 12276

2666 ²/₃ Acres

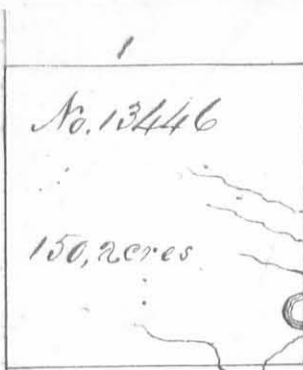
Beech Tree Marked 52 M.T. 1819 at 569 Poles

Survey of
for Valentine
Peers 2666 ²/₃
acres of land
in part of a
Military War-
rant No 6549
on the waters of
the Scioto and
Big Miami Rivers
Beginning at an
ash and hickory
southwest corner to

James Smith's survey No 10360, thence S. 78. W. 400 poles to three beeches;
thence N. 12 W. 379 poles to an ash in ^{one line omitted here - 112 m} Robert's line thence with said
line S. 24 1/2 E. 878 poles passing a beech marked 52 M.T. 1819. at
569 poles to a walnut in said line, thence N. 78 E 589 pole cross-
ing a branch to a beech in the line of George Saubert's survey
No. 13277; thence with his line N. 12 W 459 poles to the beginning

Levi C. Sharp
Michael Roselburg 3 10.6.
Wilson S Thompson M.L.S.

Thos. S. Matthews D.S.
August 5. 1823
July 16. 1825



Surveyed for Allen Latham Apr^l 150 acres of land in part of a Military warrant No 6262 on Rush Creek; beginning at a small buckeye sugar tree and white walnut on a bluff south west corner to Richards Kermans survey No. 10041 thence with his line N. 12 W. 155^{to} poles to a hickory sugar tree and ironwood near a bank; thence S. 78 W. 154^{to} poles to two beeches and an ironwood thence S. 12 E. 155^{to} poles to three beeches in the line of survey No 9909 thence N. 78 E. 154^{to} poles to the beginning.

J. Rubert

J. Rubert C.C.

James Romine M.k.r.

E. P. Kendrick D.S.

November 25th 1833

November 28th 1833

Surveyed for Allen Latham Apr^l 150 acres of land on part of a Military warrant No. 6714 on the waters of the Miami River; beginning at two beeches and an ironwood northwest corner to said Lathams former survey No. 13446; thence N. 12 W. 155^{to} poles to a beech ironwood and hickory corner to Gormans land thence S. 78 W. 154^{to} poles to three beeches northeast corner to survey No 9933 thence S. 12 E. 155^{to} poles to three beeches, thence N. 78 E. 154^{to} poles to the beginning.

J. Rubert

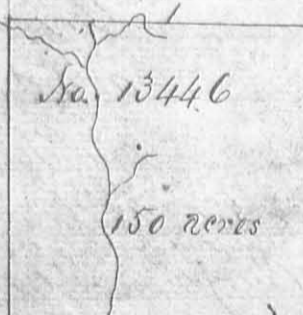
J. Rubert C.C.

James Romine M.k.r.

E. P. Kendrick D.S.

November 26th 1833

November 28th 1833



Surveyed for Allen Latham Apr^l 150 acres of land 100 acres on part of Military warrant No 6549 and 50 acres on part of No. 6262 on the waters of Rush Creek beginning at two beeches and an ironwood southeast corner to said Lathams former survey No 13446 thence S. 12 E. 155^{to} poles to three beeches in the line of survey No. 9909 thence S. 78 W. 154^{to} poles to a sugar tree, elm and red oak (the last dead) corner to survey No. 9908, thence N. 78 E. 155^{to} poles to three beeches south west corner to said Lathams former survey No 13446, thence N. 78 E. 154^{to} poles to the beginning.

J. Rubert

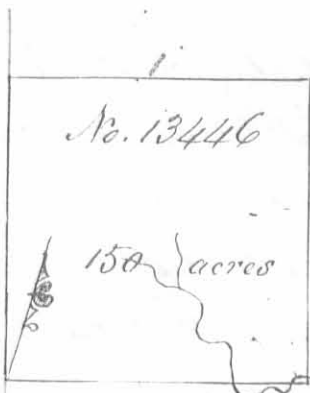
J. Rubert C.C.

James Romine M.k.r.

E. P. Kendrick D.S.

November 27th 1833

November 28th 1833



Surveyed for Allen Satham Apr 150 acres of land on part of a Military Warrant No 6714 on the waters of Rush Creek; beginning at two beeches and an iron wood northeast corner to said Satham's former survey No 13446, thence N. 12 W 155²/₁₀ poles to a beech iron wood and hickory corner to Deman, thence with his line passing his southeast corner N 78 E 154⁷/₁₀ poles to three beeches corner to Survey No. 9925, thence S. 12 E 155²/₁₀ poles to a hickory sugar tree and ironwood near a run; thence S 78. W, 154⁴/₁₀ poles to the beginning.

J. Hubert $\frac{3}{4}$

J. Hubert $\frac{3}{4}$ C.C.

James Romine M. S. r.

E. J. Kendrick D. S.

November 28th 1833

November 29th 1833

Surveyed for Samuel Hyde Saunders Apr 600 acres of land on part of two Military Warrants 400 acres on No. 6661 and 200 acres on No 6660 on the waters of Mill Creek Beginning at two Sugar trees beech and Ash North

west corner to Benjamin Biggs survey No 5209 Southwest corner to William Evans survey No. 6251, thence with Evans line North 163 poles to a sugar tree, black oak and hickory Northwest corner to said survey; thence East 400 poles to two Ashes North East corner to said survey, thence South 363 poles passing the southeast corner of said survey and North East corner to Biggs said survey at 163 poles and with Biggs line to two beeches and a sugar tree southeast corner to said survey and South corner to Thomas Chilton survey No. 77546155, thence with his line N. 7. E. 355 poles to three sugar trees and an Iron wood South East corner to Benjamin W Ladd's survey No. 6345, thence with his line West 542 poles to two sugar trees and a beech South West corner to said survey in the line of Thomas Boyers survey No. 5288, thence with said line S 13 E 340 poles to the beginning

David C Davis $\frac{3}{4}$

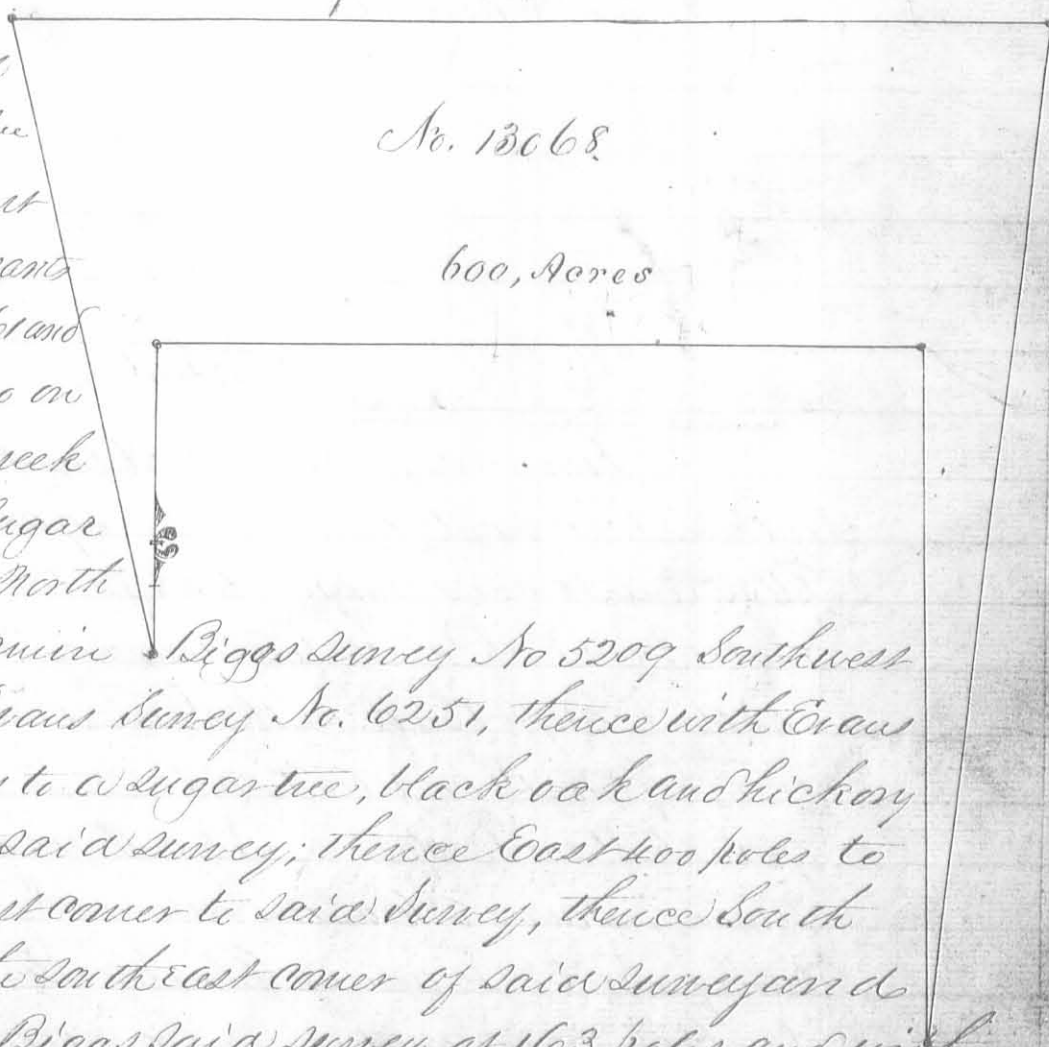
Solomon Madbery $\frac{3}{4}$ C.C.

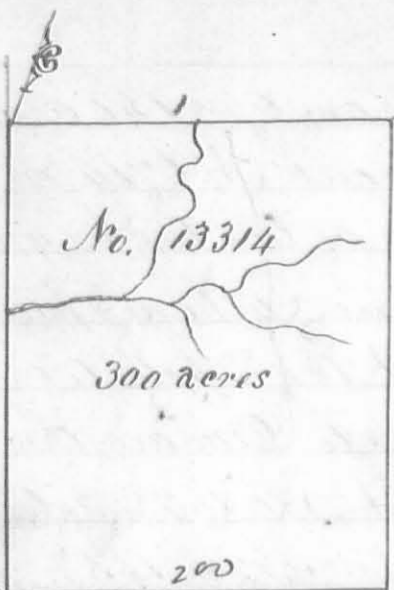
David Chapman M. S. r.

Edwallader Nallac D. S.

Febry. 5th 1830

Febry 8 1830

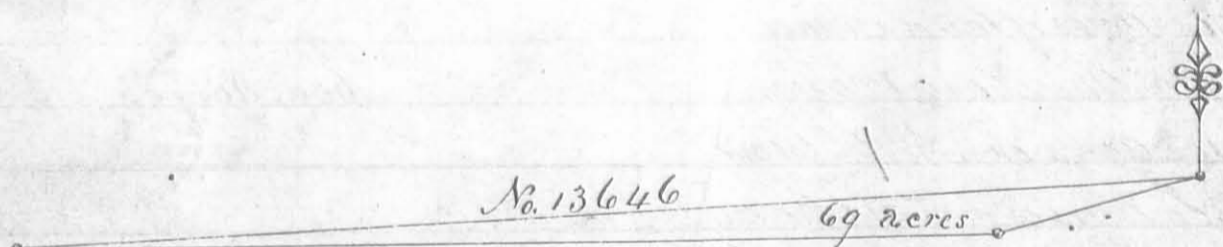




Surveyed for Duncan McArthur Apr 300 acres of land on a Military warrant No. 2831 and part of two other warrants to wit: 60 acres on No. 5470 and 40 acres on No. 6071 (which have been patented and lost by interference) and on Entry No. 13314 on the waters of the big Miami; beginning at two beeches and a sugar tree southwest corner to said McArthur's survey No. 9974 and North east corner to Robert Meane's survey No. 9952 thence with the line of the last mentioned survey N. 78. E 200 poles crossing a branch at 100 poles to two beeches in the line of Survey No. 9952 thence with said line N. 12. W. 240 poles crossing a large branch at 144 poles to the beginning.

George McColloch ³
 George Henry ³ C.C.
 David Chapman M.k.s.

E. P. Kendrick D.S.
 October 15th 1832
 September 9th 1832



Surveyed for Samuel A Sanders Apr 69 acres of land on part of three Military warrants viz: 39 acres on No. 6652 20 acres on No. 6653 and 10 acres on No. 6658 on the waters of Beecher Creek; beginning at a beech North east corner to Duncan McArthur's survey No. 13316, 13317 & 13410 in the Greenville Treaty line, thence with said line S. 78 W 1200 poles to a three pronged willow on the west bank of Rush Creek thence N. 80. E 1100 poles passing the Northwest corner of James McAbins survey No. 3323 that of George McCredie's survey No. 3314 and of Charles Humphries survey No. 3472 to the hickories two sugar trees and an iron wood the North east corner of said survey No. 3472, thence N. 80 E 131 poles to the beginning.

Nelson Dickinson ³
 Thomas Dickinson ³ C.C.
 Samuel A Sanders M.k.s.

E. P. Kendrick D.S.
 May 1, 1836
 May 20, 1836